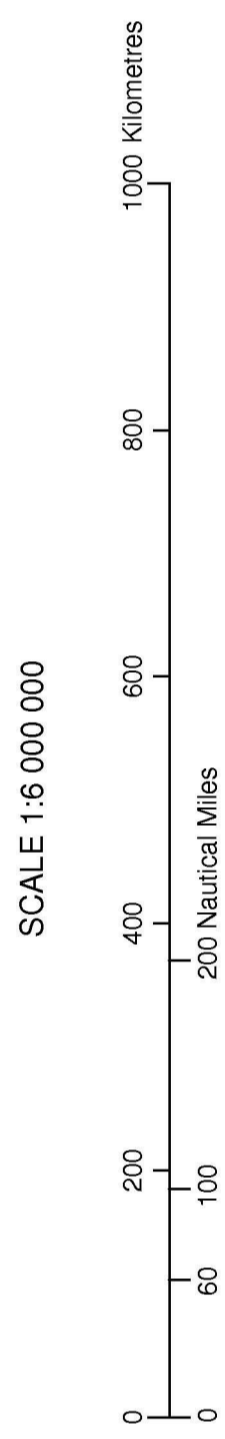


The outer limit of the continental shelf of Australia in the region of the Australian Antarctic Territory showing the outer limit line and the area of extended continental shelf



Limited Control Area Projection
Central Meridian 110° E
Standard Parallel 10° S

Lines

- Australia's territorial sea baseline
- 200 M line from Australia's territorial sea
- 200 M line from coastline of an opposite or adjacent State
- 200 M line of delimitation
- 200 M line of delimitation - in areas of potential delimitation
- Outer limit of extended continental shelf
- Outer limit of extended continental shelf - in areas of potential delimitation

Other information

- Land boundary with an adjacent State
- Land

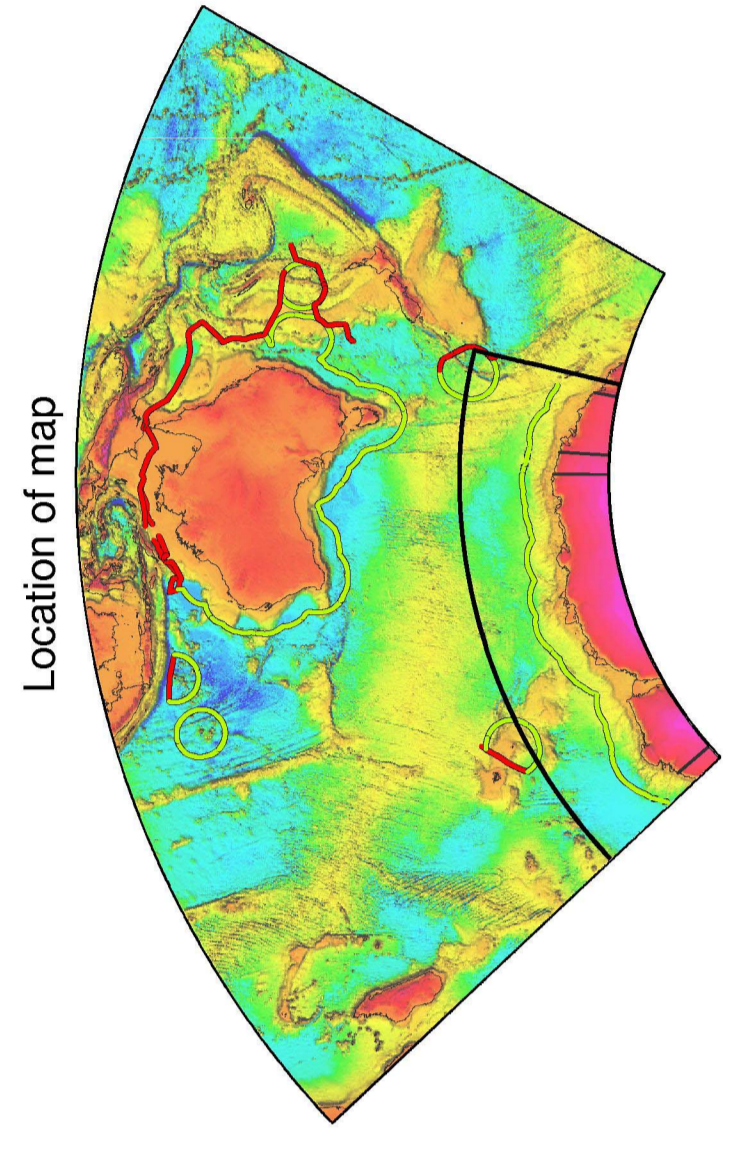
Abbreviations

- M nautical mile (1852 m)
- m metres

Colour-gridded bathymetric scale (see explanatory notes)

Explanatory Notes

- The colour-gridded bathymetric scale is derived from ETOPO1. Bathymetric data is available at <http://www.ngs.noaa.gov/GMT/html/e1.html>.
- Unshaded areas depict the maximum area of Australia's extended continental shelf (ECS). Light shading depicts areas that lie within 200 nautical miles of the Australian coastline and the maximum area of the ECS. Dark shading depicts the area beyond the 200 nautical miles and the maximum area of the ECS.
- Depiction of 200 nautical miles from the territory of States other than Australia, is based on information available at the time of production, and should not be taken to signify acceptance or endorsement by Australia of the validity of international law of the non-Australian respondents from which they are derived.
- The 200 nautical miles line and extended continental shelf outer limit line are based on information available at the time of production, and should not be taken to signify acceptance or endorsement by Australia of the validity of international law of the non-Australian respondents from which they are derived.
- The 200 nautical miles line and extended continental shelf outer limit line have been marked to take account of the fact that maritime boundaries have not been determined for the Australian Antarctic Territory. The extent of the fishing zone for vessels flying the flag of Australia is determined by the methodology.



ANT-MAP-ES-1