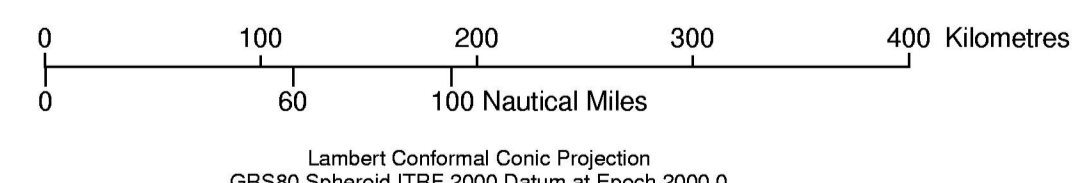


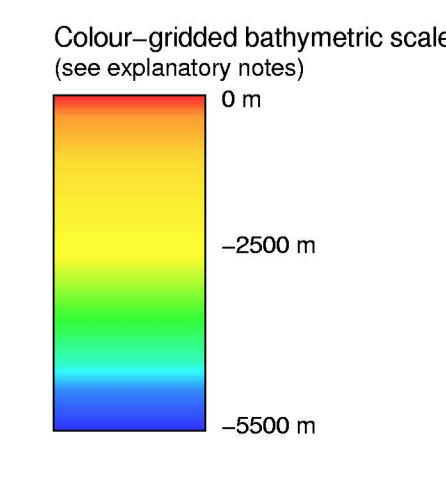
The outer limit of the continental shelf of Australia in the Kerguelen Plateau region showing the outer limit line and the area of extended continental shelf

SCALE 1:3 500 000



Lambert Conformal Conic Projection
 GRS80 Spheroid ITSF 2000 Datum at Epoch 2000.0
 Central Meridian 75° E
 Standard Parallels 57° S and 65° S

- Lines**
- Australia's territorial sea baseline
 - 200 M line from Australia's territorial sea baseline
 - Treaty boundary with an opposite or adjacent State
 - Outer limit of extended continental shelf
- Abbreviations**
- M nautical mile (1852 m)
 - m metres



- Explanatory Notes**
1. This map has been produced in ESRI ArcMap 8.3 using geo-spatially correct data.
 2. The gridded bathymetric image that forms the background of this map was derived from ETOPO2. <http://www.ngdc.noaa.gov/mgg/files/01img04.html>
 3. The map depicts the outer limit of the extended continental shelf generated by Heard Island and the McDonald Islands only and does not take account of areas of extended continental shelf generated by other Australian territory.
 4. Unshaded area of the map depicts the area of Australia's extended continental shelf generated from Heard Island and the McDonald Islands. Light shading depicts the area of Australia's maritime jurisdiction that lies within 200 nautical miles of its territorial sea baseline. Dark shading depicts the area beyond the 200 nautical mile line and the relevant area of ECS.
 5. Depiction of 200 nautical mile arcs from the territory of States other than Australia is based on information available at the time of production, and should not be taken to signify acceptance or endorsement by Australia of the validity of international law of the non-Australian basepoints from which they are drawn.
 6. The term "extended continental shelf" is used to refer to that part of the continental shelf defined under UNCLOS article 76 that lies beyond 200 nautical miles from Australia's territorial sea baseline.
 7. The 1987 Agreement on Maritime Delimitation between the Government of Australia and the Government of the French Republic delimits inter alia the continental shelf and exclusive economic zone boundaries between Heard and McDonald Islands (Australia) on the one hand and of Kerguelen Islands (France) on the other hand.

