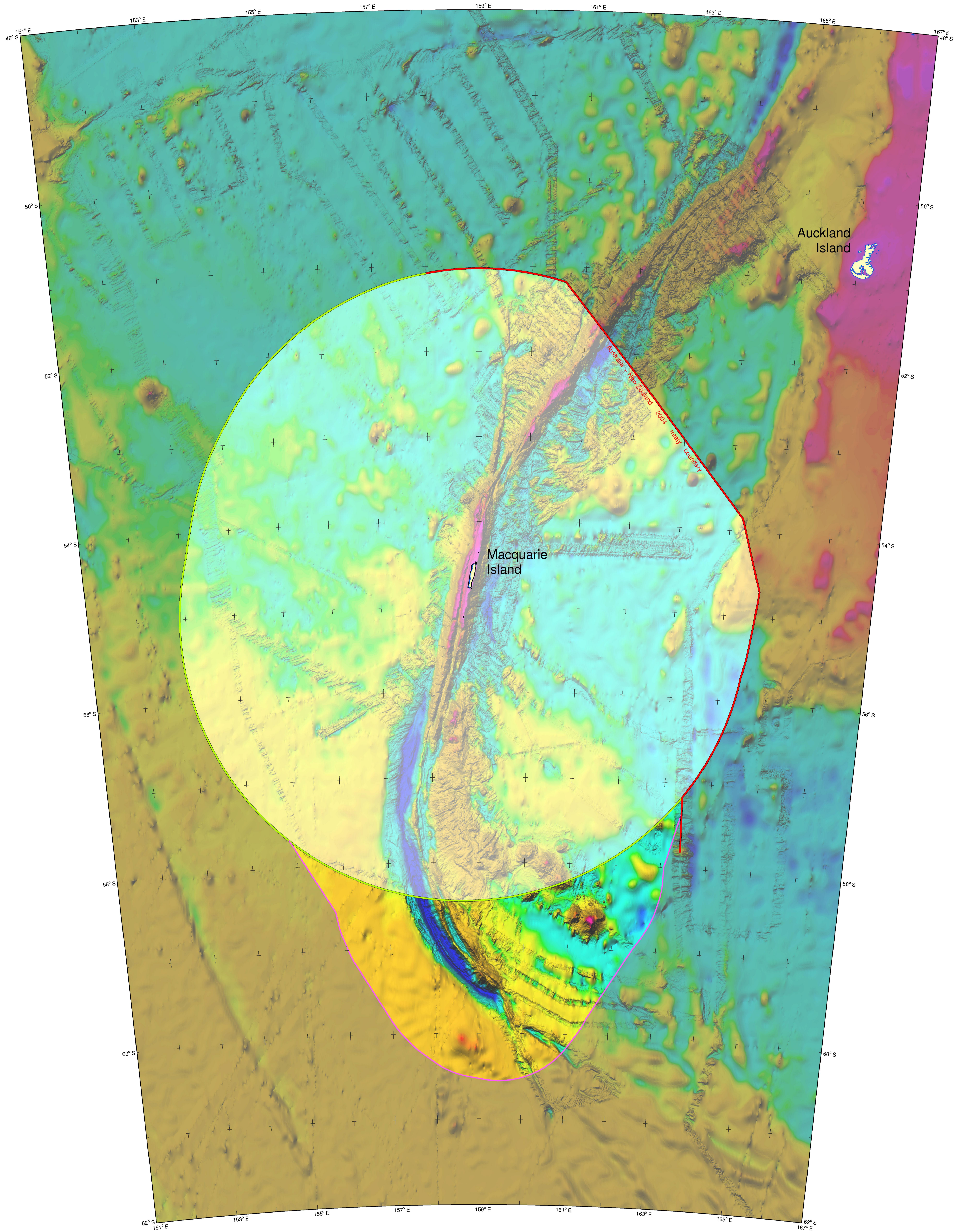


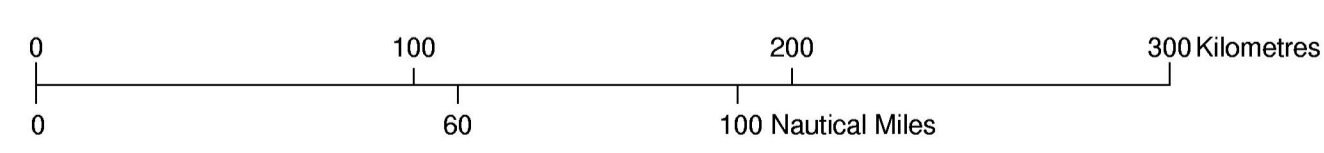


AUSTRALIA



The outer limit of the continental shelf of Australia in the Macquarie Ridge region showing the outer limit line and the area of extended continental shelf

SCALE 1:2 000 000

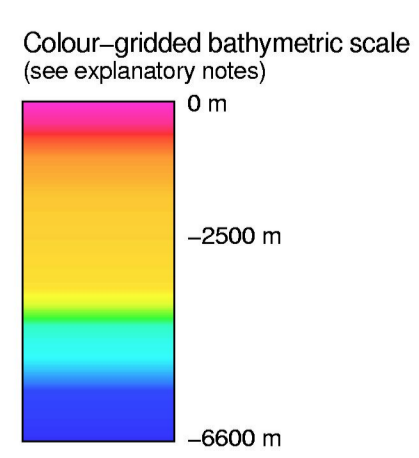


Lambert Conformal Conic Projection
 CRS84 Spheroid: GRS80 Datum: ED 2000.0
 Central Meridian: 159° E
 Standard Parallels: 50° 20' S and 59° 40' S

Lines

- Australia's territorial sea baseline
- 200 M line from Australia's territorial sea baseline
- Treaty boundary with an opposite or adjacent State
- Outer limit of extended continental shelf

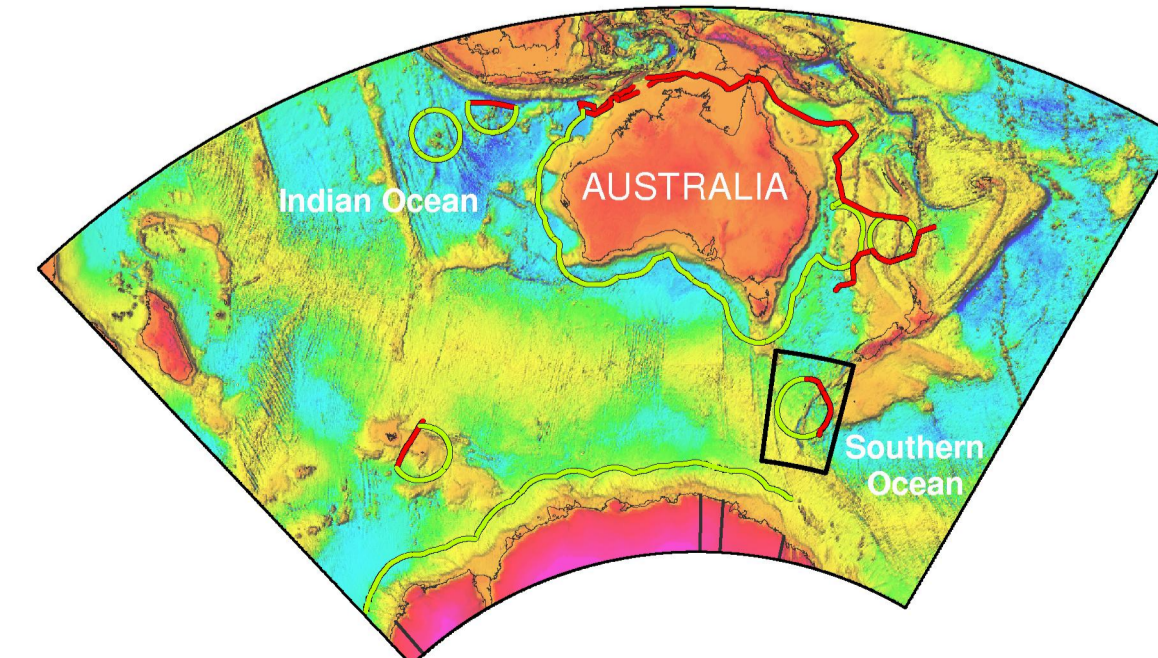
Abbreviations
 m metres
 M nautical mile (1852 m)



Explanatory Notes

1. This map has been produced in ESRI ArcMap 8.3 using geo-spatially correct data.
2. The colour-gridded bathymetric image that forms the background of this map was derived from a grid produced by Geoscience Australia in June 2001 using all available swath bathymetry, with ETOPO2 data filling in areas of no data.
3. Unshaded central area depicts the relevant area of Australia's extended continental shelf (ECS). Light shading depicts the area of Australia's maritime jurisdiction that lies within 200 nautical miles of its territorial sea baseline. Dark shading depicts the area beyond the 200 nautical mile line and the relevant area of ECS.
4. Depiction of 200 nautical mile lines from the territory of States other than Australia is based on information available at the time of production, and should not be taken to signify acceptance or endorsement by Australia of the validity of international law of the non-Australian basepoints from which they are drawn.
5. The term 'extended continental shelf' is used to refer to that part of the continental shelf defined under UNCLOS article 76 that lies beyond 200 nautical miles from Australia's territorial sea baseline.
6. The 2004 Treaty between the Government of Australia and the Government of New Zealand Establishing Certain Exclusive Economic Zone Boundaries and Continental Shelf Boundaries delimits inter alia the continental shelf and exclusive economic zone boundaries between Australia in respect of Macquarie Island and New Zealand in respect of Auckland and Campbell Islands.

Location of map



MAC-MAP-ES-1