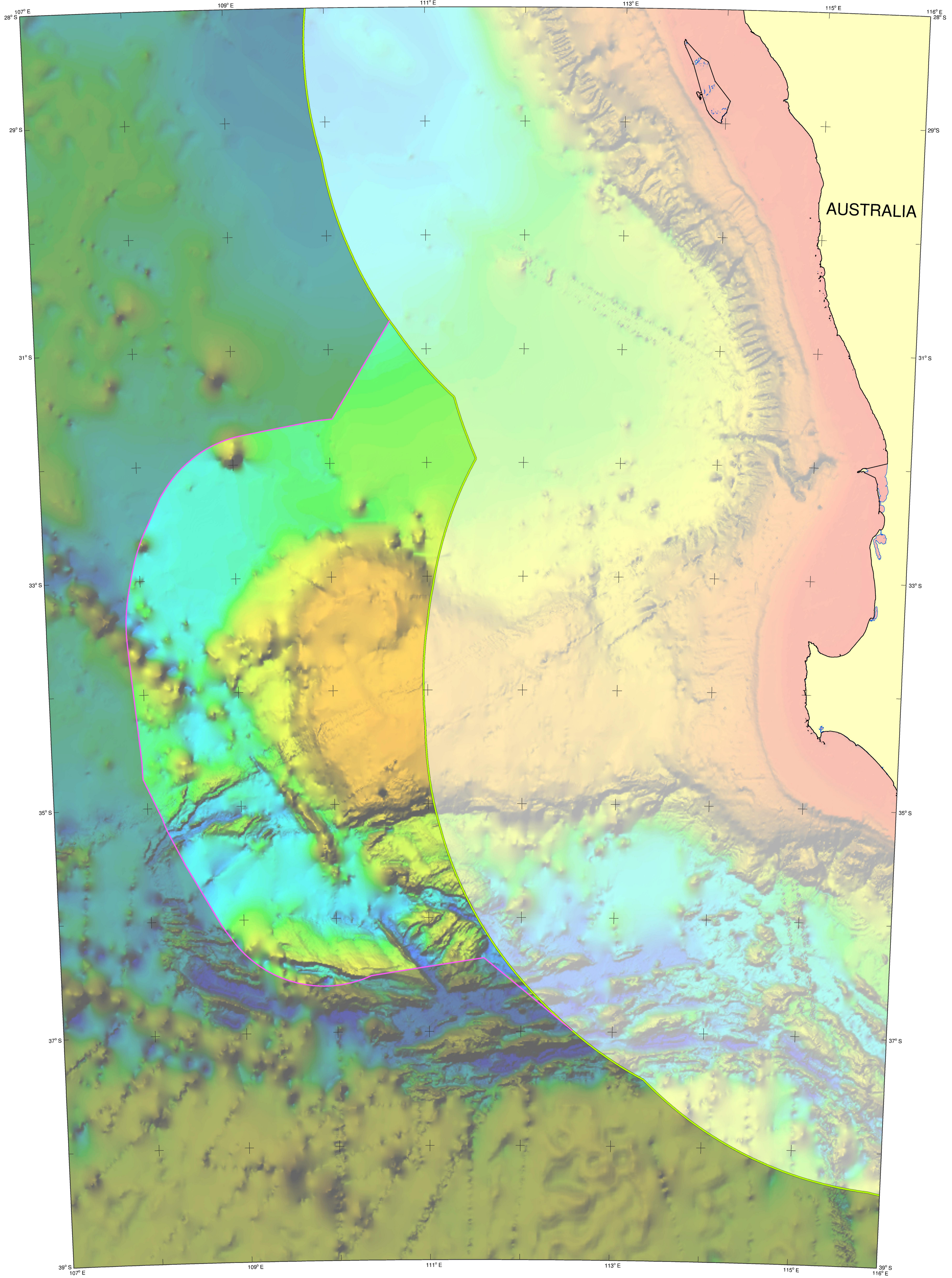


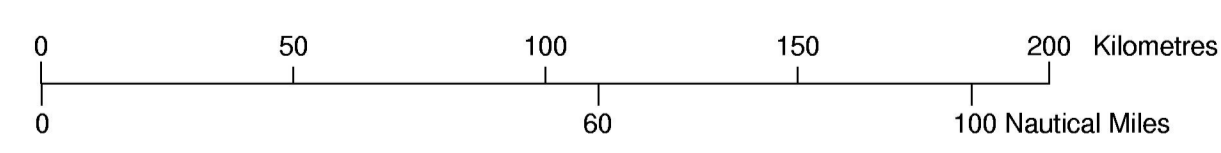


AUSTRALIA



The outer limit of the continental shelf of Australia in the Naturaliste Plateau region showing the outer limit line and the area of extended continental shelf

SCALE 1:1 500 000



Lambert Conformal Conic Projection  
GRS80 Spheroid ITRF 2000 Datum at Epoch 2000.0  
Central Meridian 111° 30' E  
Standard Parallels 30° S and 37° S

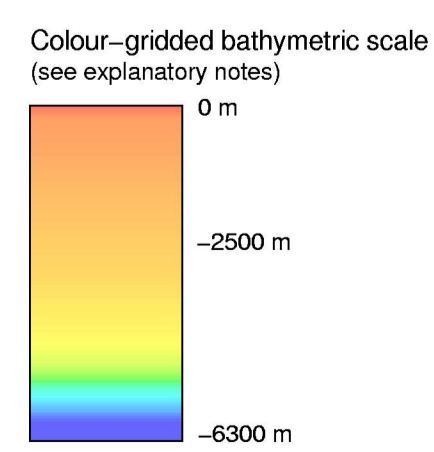
**Lines**

- Australia's territorial sea baseline
- 200 M line from Australia's territorial sea baseline
- Outer limit of extended continental shelf

**Land**

**Abbreviations**

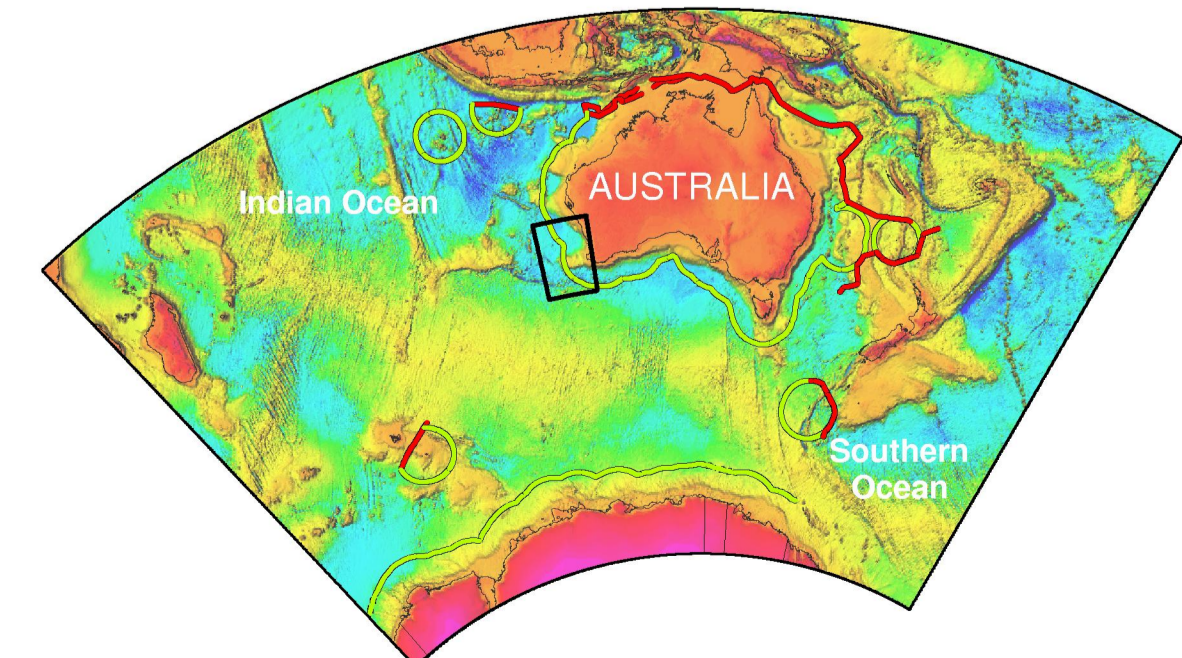
*m* metres  
*M* nautical mile (1852 m)



**Explanatory Notes**

1. This map has been produced in ESRI ArcMap 8.3 using geo-spatially correct data.
2. The colour-gridded bathymetric image that forms the background of this map was derived from Peškov, P. and Buchanan, C. (2002) - Australian Bathymetry and Topography Grid (January 2002), (CDROM), Geoscience Australia, Canberra.
3. Unshaded central area depicts the relevant area of Australia's extended continental shelf (ECS). Light shading depicts the area of Australia's maritime jurisdiction that lies within 200 M of its territorial sea baseline. Dark shading depicts the area beyond the 200 M line and the relevant area of ECS.
4. Depiction of 200 nautical mile lines from the territory of States other than Australia, and of lines equidistant from Australian land territory and that of another State, is based on information available at the time of production, and should not be taken to signify acceptance or endorsement by Australia of the validity of international law of the non-Australian baselines from which they are drawn.
5. The term "extended continental shelf" is used to refer to that part of the continental shelf defined under UNCLOS article 76 that lies beyond 200 nautical miles from Australia's territorial sea baseline.

**Location of map**



NAT-MAP-ES-1