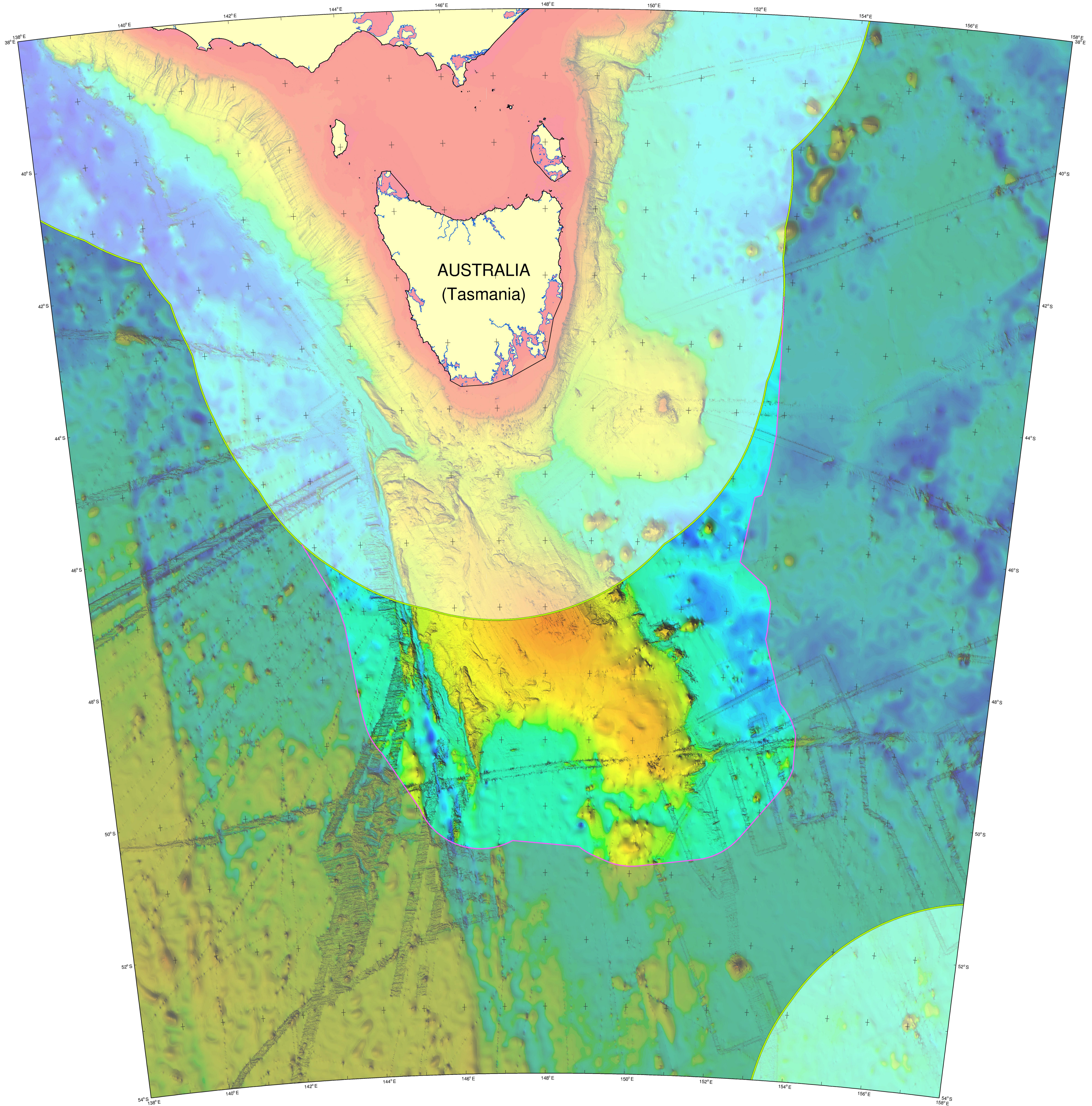


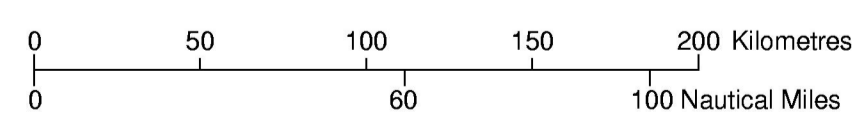


AUSTRALIA



The outer limit of the continental shelf of Australia in the South Tasman Rise region showing the outer limit line and the area of extended continental shelf

SCALE 1:2 200 000

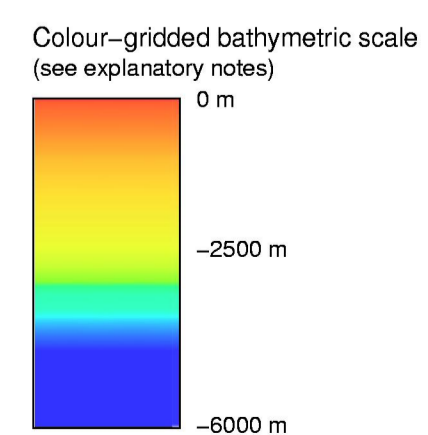


Lambert Conformal Conic Projection  
 GRS80 Spheroid (111 320 Datum of Epoch 2000.0)  
 Central Meridian 148° E  
 Standard Parallels 40° S and 51° 20' S

- Lines**
- Australia's territorial sea baseline
  - 200 M line from Australia's territorial sea baseline
  - Outer limit of extended continental shelf

**Land**

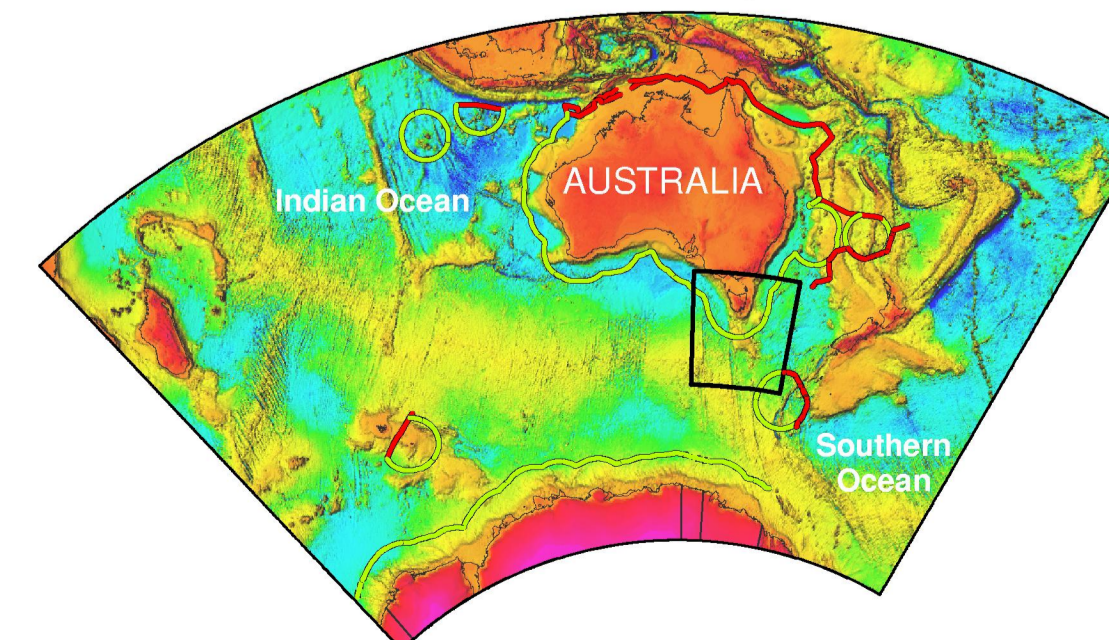
Abbreviations  
*M* nautical miles (1852 m)  
*m* metres



**Explanatory Notes**

1. This map has been produced in ESRI ArcMap 8.3 using geo-spatially correct data.
2. The colour-gridded bathymetric image that forms the background of this map was derived from a grid produced by Geoscience Australia in November 2005 using all available swath and stripack bathymetry, with the ETOPOS grid filling in areas of no data coverage.
3. Unshaded area of the map depicts the relevant area of Australia's extended continental shelf (ECS). Light shading depicts the area of Australia's maritime jurisdiction that lies within 200 nautical miles of its territorial sea baseline. Dark shading depicts the area beyond the 200 nautical mile line and the relevant area of ECS.
4. Depiction of 200 nautical mile arcs from the territory of States other than Australia, and of lines equidistant from Australian land territory and that of another State, is based on information available at the time of production, and should not be taken to signify acceptance or endorsement by Australia of the validity at international law of the non-Australian baselines from which they are drawn.
5. The term "extended continental shelf" is used to refer to that part of the continental shelf defined under UNCLOS article 76 that lies beyond 200 nautical miles from Australia's territorial sea baseline.

**Location of map**



STR-MAP-ES-1