



SUBMISSION BY THE COMMONWEALTH OF THE BAHAMAS TO THE COMMISSION ON THE LIMITS OF THE CONTINENTAL SHELF

EXECUTIVE SUMMARY

BHS-ES-DOC



TABLE OF CONTENTS

PREFACE.....	iii
LIST OF FIGURES.....	iv
LIST OF TABLES.....	iv
1. Introduction.....	1
2. Absence of Disputes	2
3. Form of Submission, Maps and Tables.....	2
4. Provisions of Article 76 Invoked.....	3
5. Geomorphological and Geological Overview	3
6. The Outer Limits of the Continental Shelf	4
7. Advisory Assistance	4



PREFACE

This Executive Summary forms part of the Submission by the Commonwealth of The Bahamas to the Commission on the Limits of the Continental Shelf.¹

¹ The Submission was prepared by:

Office of Attorney-General & Ministry of Legal Affairs
Bahamas National Geographical Information Systems (BNGIS) Centre
Ministry of Foreign Affairs and Immigration
Mr Joshua Brien (Head of Section and Adviser) and Ms Rosemarie Cadogan (Legal Adviser),
Commonwealth Secretariat
Maritime Limits and Boundaries Services Ltd U.K. (engaged by the Commonwealth Secretariat)
Mr Harald Brekke (engaged by the Commonwealth Secretariat)
Mr Harald Sund (GEOCAP) (engaged by the Commonwealth Secretariat)



LIST OF FIGURES

FIGURE 1: Regional Overview and Features relevant to the Submission 5

FIGURE 2: Map Illustrating the Outer Limits of the Continental Shelf of The Bahamas and Area of Continental Shelf extending beyond 200M from the Archipelagic Baselines (BHS-ES-MAP 1)..... 6

FIGURE 3: Map illustrating the Fixed Points defining the Outer Limits of the Continental Shelf of The Bahamas and the Article 76 formula and constraints used to construct the Outer Limit (BHS-ES-MAP 2)..... 7

LIST OF TABLES

TABLE 1: List of coordinates of fixed points (FP) defining the outer limit of the Continental Shelf. All coordinates relate to the WGS84 geodetic reference system.....17

1. Introduction

- 1.1 This Executive Summary forms part of the Submission made by the Commonwealth of The Bahamas ('The Bahamas') pursuant to paragraph 8 of Article 76 of the United Nations Convention on the Law of the Sea, 1982 ('the Convention'), in support of the establishment by The Bahamas of the outer limits of the continental shelf that lies beyond 200 nautical miles ('M') from the territorial sea baselines in the Bahamas-Blake Plateau region.
- 1.2 Where the continental shelf extends beyond 200 M from the territorial sea baselines, a coastal State seeking to establish the outer limits of the continental shelf beyond 200 M, is required under paragraph 8 of Article 76 to submit information on such outer limits to the Commission on the Limits of the Continental Shelf ('the Commission'), which makes recommendations to the coastal State concerning the outer limits of the continental shelf consistent with the relevant provisions of Article 76 of the Convention.
- 1.3 The Bahamas is an Archipelagic State that lies between latitudes 20° and 28° N, and longitudes 72° and 80° W, consisting of more than 700 islands and nearly 2500 small cays and islets in the Atlantic Ocean, located north of Cuba and the Dominican Republic, northwest of the Turks and Caicos, and southeast of the United States of America. The total land area of The Bahamas is approximately 14,000 km², enclosed by approximately 3,542 km² of coastline. The capital city – Nassau – is located on the island of New Providence.
- 1.4 The Bahamas became a sovereign independent nation on 10 July 1973, following the enactment of *The Bahamas Independence Act 1973* and *The Bahamas Independence Order 1973*, which contained the *Constitution of the Commonwealth of The Bahamas*. The Bahamas was admitted to the United Nations on 18 September 1973.
- 1.5 The Bahamas became a Contracting Party to the Convention having signed on 10 December 1982 and ratified it on 29 July 1983. The establishment of the maritime zones of The Bahamas, consistent with the provisions of the Convention, is provided for under the *Archipelagic Waters and Maritime Jurisdiction Act 1993* and *Continental Shelf Act 1970*, which are viewable online at http://www.un.org/Depts/los/LEGISLATIONANDTREATIES/PDFFILES/BHS_1993_37.pdf and at http://laws.bahamas.gov.bs/cms/images/LEGISLATION/PRINCIPAL/1970/1970-0017/ContinentalShelfAct_1.pdf respectively.
- 1.6 In accordance with Article 47, paragraph 9 of the Convention, The Bahamas has deposited with the United Nations a list of geographical coordinates of points defining the archipelagic baselines of The Bahamas, as contained in the *Archipelagic Waters and Maritime Jurisdiction (Archipelagic Baselines) Order 2008* (Ref: (M.Z.N. 65.2008 .LOS. (Maritime Zone Notification) 23 December 2008), which is viewable online in the Law of the Sea Bulletin No. 69 at http://www.un.org/Depts/los/LEGISLATIONANDTREATIES/PDFFILES/mz_n_s/mzn65.pdf.
- 1.7 As provided for under paragraph 1 of Article 76 of the Convention, The Bahamas has a continental shelf comprising the seabed and subsoil of the submarine areas that extend beyond the territorial sea and archipelagic waters throughout the natural prolongation of the relevant land territory to the outer edge of the continental margin, up to the limits provided for in paragraphs 4 to 6 of Article 76.



1.8 This Submission represents a full submission in respect of the continental shelf beyond 200 M from the archipelagic baselines of The Bahamas. For the purposes of preparing this Submission, The Bahamas has applied the relevant provisions of Article 76 of the Convention, the Rules of Procedure of the Commission on the Limits of the Continental Shelf (CLCS/40/Rev. 1) adopted by the Commission on 17 April 2008 ('Rules of Procedure') and the Scientific and Technical Guidelines of the Commission on the Limits of the Continental Shelf (CLCS/11) adopted by the Commission on 13 May 1999 ('the Guidelines').

2. Absence of Disputes

- 2.1 The Bahamas recalls that Article 9 of Annex II of the Convention provides that the actions of the Commission shall not prejudice matters relating to the delimitation of boundaries between States with opposite or adjacent coasts. The Commission has therefore adopted a practice, contained in Annex I to the Rules of Procedure, which is intended to prevent the consideration of a submission that would require the examination by the Commission of a disputed continental shelf without the consent of the affected parties.
- 2.2 In accordance with paragraph 2(a) of Annex I of the Rules of Procedure, The Bahamas confirms that the area of continental shelf that forms the basis of the Submission is not the subject of any dispute with any other State.
- 2.3 The Bahamas notes that the establishment of agreed maritime boundaries between The Bahamas and the United States of America is presently subject to negotiation and final delimitation. In this regard, The Bahamas reaffirms that the lodgement of the present Submission is made without prejudice to the delimitation of outstanding maritime boundaries between The Bahamas and the United States of America.

3. Form of Submission, Maps and Tables

- 3.1 In accordance with Article 1 of Annex III to the Rules of Procedure and paragraphs 9.1.3 to 9.1.6 of the Guidelines, the Submission consists of three parts comprising:
- this Executive Summary (BHS-ES-DOC);
 - the Main Body (BHS-MB-DOC); and,
 - Supporting scientific and technical data (BHS-SD-DOC).

A separate section of this Executive Summary provides a brief outline of the region(s) of continental shelf beyond 200M, including a depiction of the outer limits of the continental shelf determined by The Bahamas.



3.2 Two maps at an appropriate scale are included in this Executive Summary and have been duly supplied as separate A0-size maps. These maps are reproduced in this Executive Summary as Figure 2 (BHS-ES-MAP 1), which depicts the outer limits of the continental shelf showing the outer limit line and area of continental shelf extending beyond 200 M from the territorial sea baseline and, Figure 3 (BHS-ES-MAP 2), which depicts the outer limits of the continental shelf and the provisions of Article 76 invoked.

4. Provisions of Article 76 Invoked

4.1 The Bahamas has invoked paragraphs 3, 4(a)(ii), 5 and 7 of Article 76 of the Convention in support of the determination of the outer limits of the continental shelf included in this Submission, as outlined in Section 6 of this Executive Summary.

5. Geomorphological and Geological Overview

5.1 This Submission concerns the continental shelf of The Bahamas in the Blake-Bahama Ridge region. The Blake-Bahama Ridge is a topographic feature over 800 km in length and 500km wide, which trends north-eastwards from the Bahama Platform (See: Figure 1).

5.2 The archipelago of The Bahamas islands sits on the Bahama Platform, a submerged area composed of limestone of shallow water marine origin. To the north, water depths increase into the Blake Plateau, a broad, relatively flat, submerged submarine elevation located at water depths that range from 800m to 1000m. To the east, water depths continue to increase into the Blake-Bahama Ridge.

5.3 The Blake-Bahama Ridge is a significant elevated feature located in the eastern north-Atlantic, in the southern part of the Atlantic continental margin of North America. The Blake-Bahama Outer Ridge is a large deep-ocean sediment drift that has accumulated on an unconformity in the deep ocean floor next to the major escarpment north-east of the Blake Plateau that rises 1000 - 2000 meters above the Hatteras Abyssal Plain, forming a seaward (south-eastward) promontory extending from the main escarpment just north of the Blake Spur.

5.4 According to the Guidelines and in particular paragraph 2.2.3, The Bahamas is required to demonstrate that the natural prolongation of its relevant land territory extends beyond 200 M from the territorial sea baseline. A detailed examination of the geology and geomorphology of the Bahamas-Blake Plateau region is presented in the Main Body of the Submission (BHS-MB-DOC), which includes a discussion that demonstrates clearly the natural prolongation of the continental shelf from the relevant land territory of The Bahamas.



6. The Outer Limits of the Continental Shelf

- 6.1 Scientific and technical data submitted by The Bahamas in support of this Submission establishes that the outer edge of the continental margin extends beyond 200 M measured from the territorial sea baseline. Accordingly, The Bahamas has defined the outer limits of the continental shelf by applying the rules of paragraphs 4 to 10 of Article 76 of the Convention.
- 6.2 In accordance with paragraph 7 of Article 76 of the Convention, The Bahamas has established the outer limits of the continental shelf beyond 200 M by fixed points defined by longitude and latitude connected by straight lines not exceeding 60 M. In this regard, The Bahamas applied GEOCAP to determine the optimized location of the fixed points on the combined formula and constraint lines.
- 6.3 The outer limits of the continental shelf of The Bahamas are defined by 385 Fixed Points ('FP') constructed as follows:
- FP 1 marks the location of the intersection of the 350 M constraint line with the 200 M line measured from the territorial sea baselines of the United States of America;
 - FP 2 to FP 205 are fixed points located along the 350 M constraint Line;
 - FP 206 to FP 384 are fixed points located on the Hedberg Line; and,
 - FP 385 marks the location of the intersection of the Hedberg Line with the 200 M line of The Bahamas.
- 6.4 Coordinates of the Article 76 fixed points that have been constructed to define the outer limits of the continental shelf of The Bahamas are supplied in Table 1, which lists the fixed points in decimal degrees (DD) and specifies the provisions of Article 76 invoked to support the establishment of each fixed point, together with the distance between adjacent points.
- 6.5 The area of continental shelf described in the Submission extending beyond 200 nautical miles ('M') from the Archipelagic Baseline of The Bahamas is approximately 200,000 sq. km.

7. Advisory Assistance

- 7.1 The Bahamas was assisted in the preparation of this Submission by Mr Harald Brekke, a former Member of the Commission (2002-2012). A further list of legal and technical advisors who provided assistance to The Bahamas during the preparation of the Submission is referred to in the Preface to this Executive Summary.

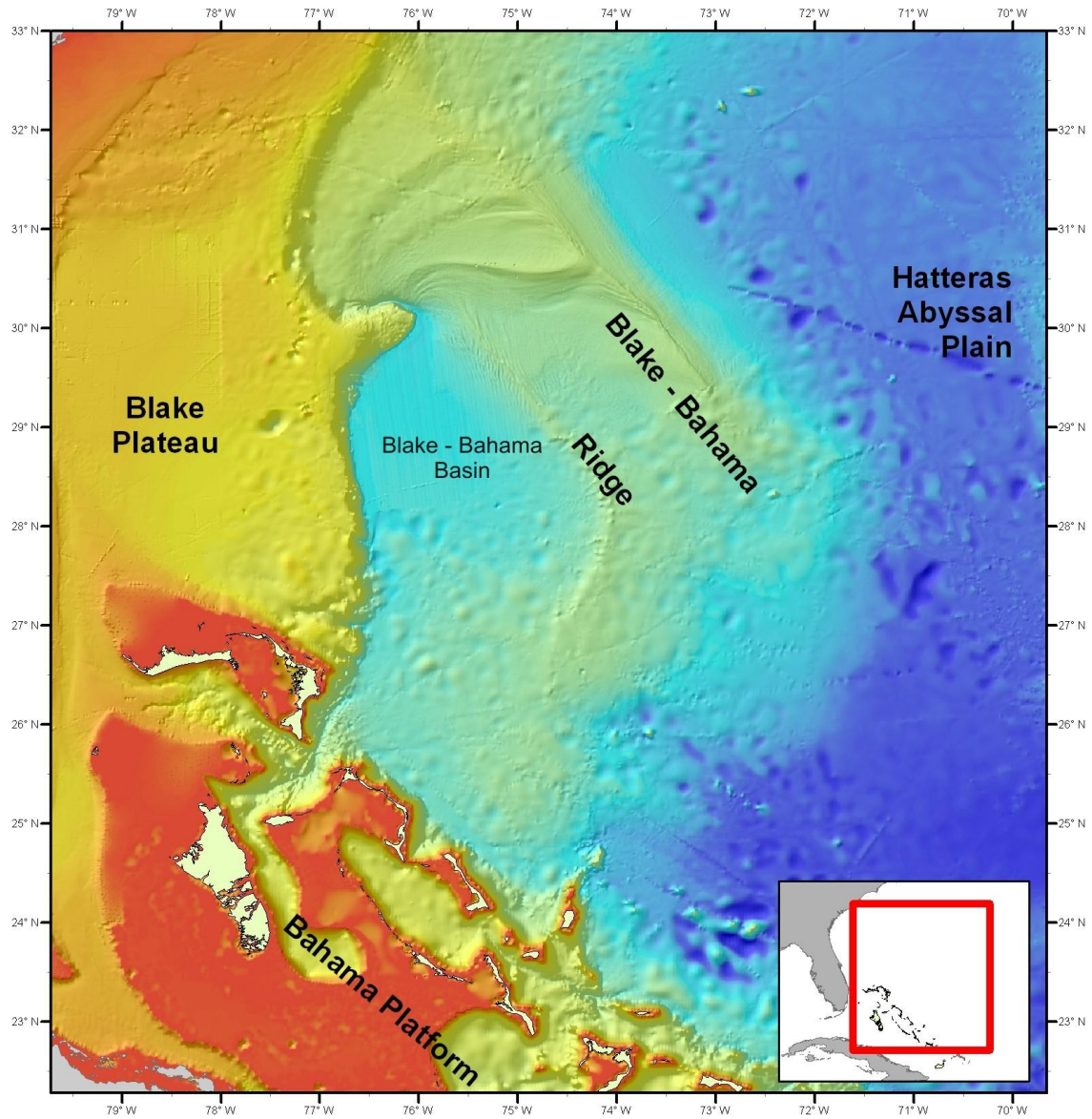


Figure 1: Regional Overview and Features relevant to the Submission

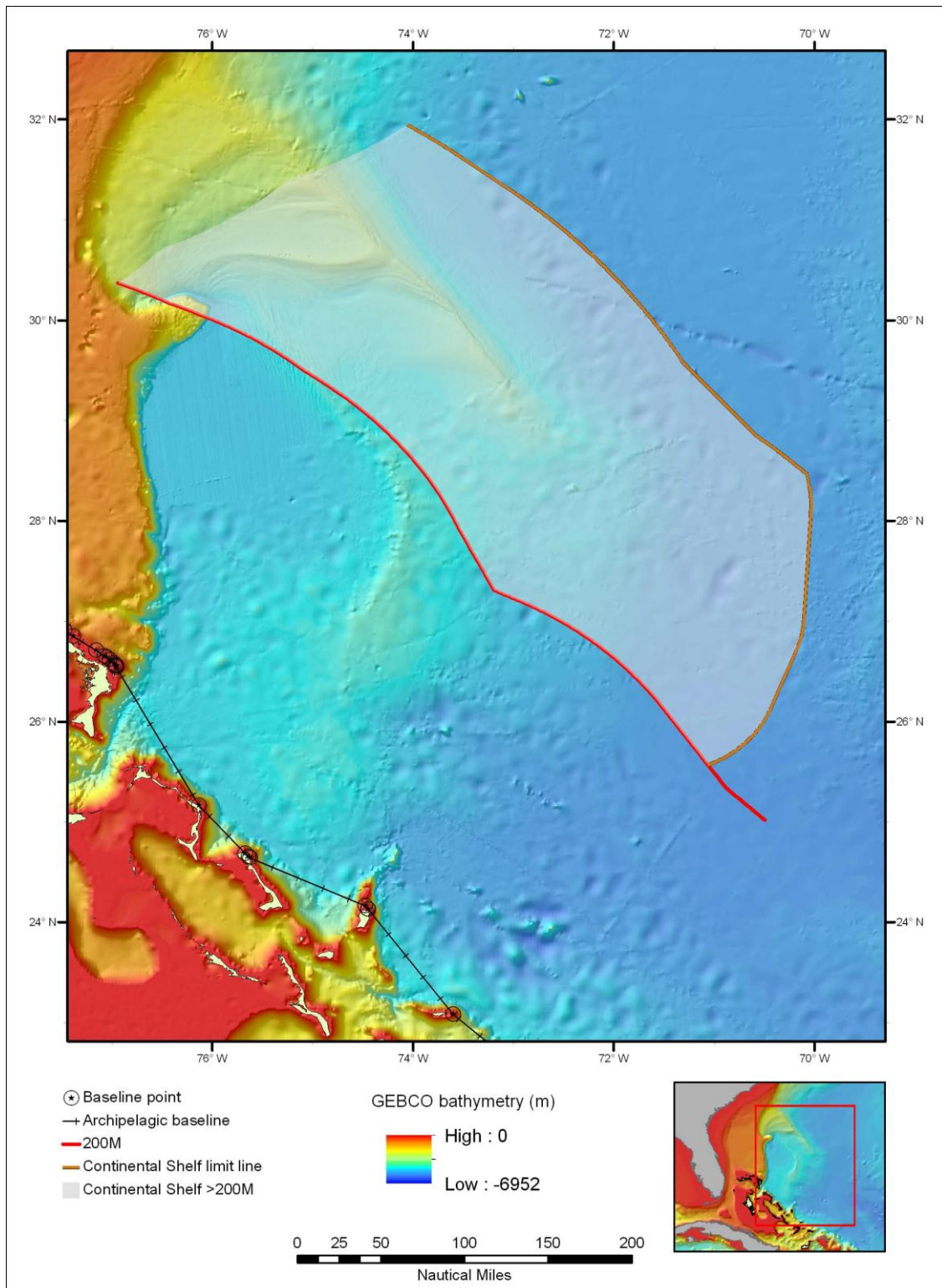


Figure 2: Map Illustrating the Outer Limits of the Continental Shelf of The Bahamas and Area of Continental Shelf extending beyond 200M from the Archipelagic Baselines (BHS-ES-MAP 1).

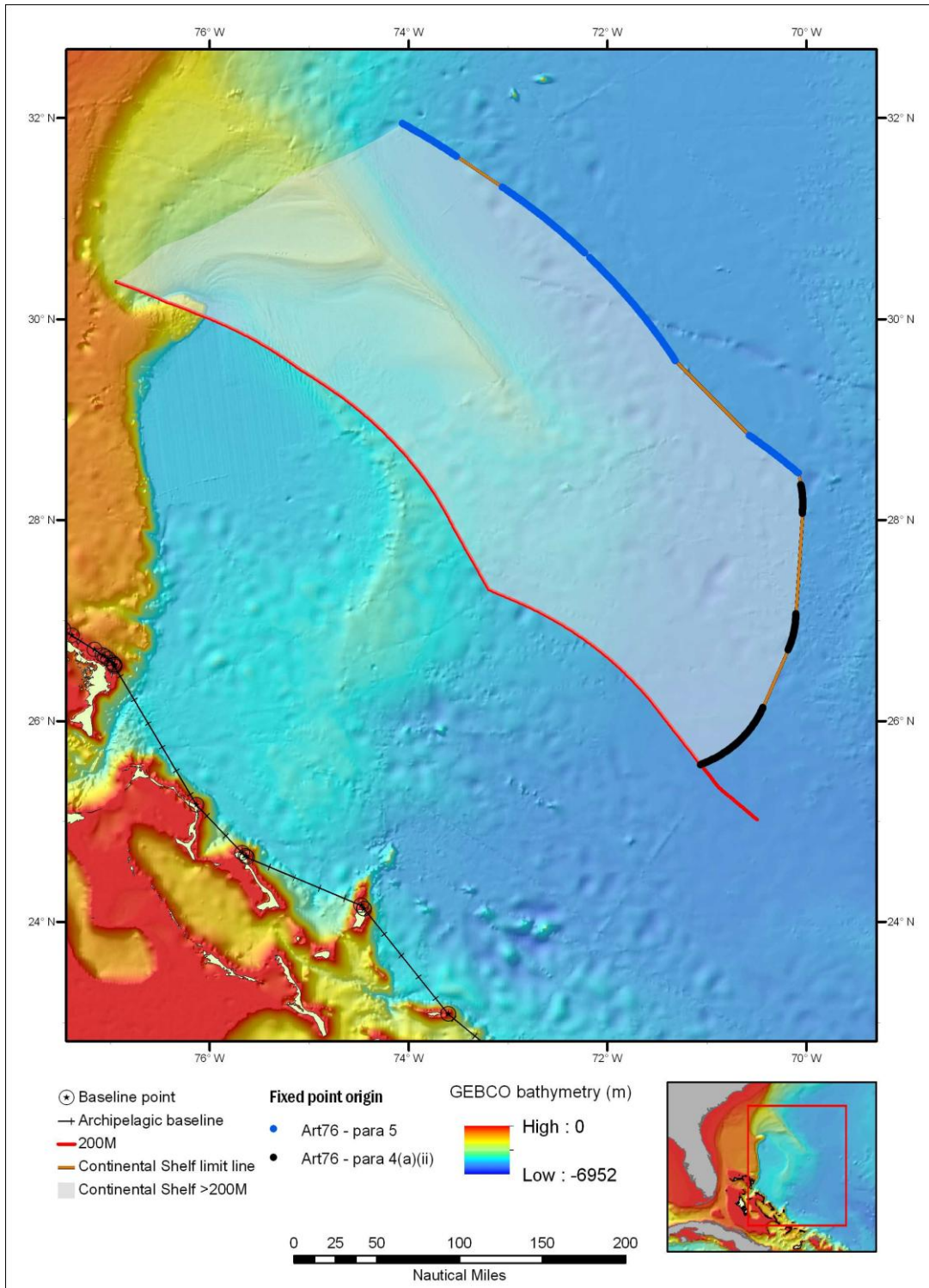


Figure 3: Map illustrating the Fixed Points defining the Outer Limits of the Continental Shelf of The Bahamas and the Article 76 formula and constraints used to construct the Outer Limit (BHS-ES-MAP 2).



FP	LONGITUDE (W)	LATITUDE (N)	FORMULA	FROM FP	TO FP	DISTANCE (M)
1	-74.061874	31.946239	Art76 - para 5			
2	-74.045952	31.937708	Art76 - para 5	1	2	0.96
3	-74.029404	31.928780	Art76 - para 5	2	3	1.00
4	-74.012886	31.919807	Art76 - para 5	3	4	1.00
5	-73.996399	31.910795	Art76 - para 5	4	5	1.00
6	-73.979942	31.901739	Art76 - para 5	5	6	1.00
7	-73.963531	31.892643	Art76 - para 5	6	7	1.00
8	-73.947144	31.883503	Art76 - para 5	7	8	1.00
9	-73.930794	31.874321	Art76 - para 5	8	9	1.00
10	-73.914474	31.865097	Art76 - para 5	9	10	1.00
11	-73.898193	31.855833	Art76 - para 5	10	11	1.00
12	-73.881943	31.846527	Art76 - para 5	11	12	1.00
13	-73.865730	31.837179	Art76 - para 5	12	13	1.00
14	-73.849548	31.827791	Art76 - para 5	13	14	1.00
15	-73.833405	31.818357	Art76 - para 5	14	15	1.00
16	-73.817291	31.808887	Art76 - para 5	15	16	1.00
17	-73.801216	31.799374	Art76 - para 5	16	17	1.00
18	-73.785179	31.789820	Art76 - para 5	17	18	1.00
19	-73.769173	31.780228	Art76 - para 5	18	19	1.00
20	-73.753204	31.770588	Art76 - para 5	19	20	1.00
21	-73.737267	31.760910	Art76 - para 5	20	21	1.00
22	-73.721367	31.751194	Art76 - para 5	21	22	1.00
23	-73.705505	31.741434	Art76 - para 5	22	23	1.00
24	-73.689682	31.731636	Art76 - para 5	23	24	1.00
25	-73.673889	31.721798	Art76 - para 5	24	25	1.00
26	-73.658134	31.711916	Art76 - para 5	25	26	1.00
27	-73.642418	31.701998	Art76 - para 5	26	27	1.00
28	-73.626732	31.692039	Art76 - para 5	27	28	1.00
29	-73.611084	31.682037	Art76 - para 5	28	29	1.00
30	-73.595482	31.671997	Art76 - para 5	29	30	1.00
31	-73.579910	31.661917	Art76 - para 5	30	31	1.00
32	-73.564377	31.651794	Art76 - para 5	31	32	1.00
33	-73.548874	31.641638	Art76 - para 5	32	33	1.00
34	-73.533417	31.631439	Art76 - para 5	33	34	1.00
35	-73.517990	31.621201	Art76 - para 5	34	35	1.00
36	-73.056870	31.313250	Art76 - para 5	35	36	30.00
37	-73.041534	31.302967	Art76 - para 5	36	37	1.00
38	-73.010910	31.282362	Art76 - para 5	37	38	2.00



39	-72.995621	31.272039	Art76 - para 5	38	39	1.00
40	-72.980370	31.261677	Art76 - para 5	39	40	1.00
41	-72.965157	31.251274	Art76 - para 5	40	41	1.00
42	-72.949982	31.240833	Art76 - para 5	41	42	1.00
43	-72.934845	31.230354	Art76 - para 5	42	43	1.00
44	-72.919746	31.219835	Art76 - para 5	43	44	1.00
45	-72.904678	31.209278	Art76 - para 5	44	45	1.00
46	-72.889656	31.198681	Art76 - para 5	45	46	1.00
47	-72.874672	31.188046	Art76 - para 5	46	47	1.00
48	-72.859726	31.177374	Art76 - para 5	47	48	1.00
49	-72.844818	31.166664	Art76 - para 5	48	49	1.00
50	-72.829948	31.155916	Art76 - para 5	49	50	1.00
51	-72.815125	31.145128	Art76 - para 5	50	51	1.00
52	-72.800331	31.134304	Art76 - para 5	51	52	1.00
53	-72.785583	31.123440	Art76 - para 5	52	53	1.00
54	-72.770866	31.112539	Art76 - para 5	53	54	1.00
55	-72.756195	31.101601	Art76 - para 5	54	55	1.00
56	-72.741570	31.090626	Art76 - para 5	55	56	1.00
57	-72.726974	31.079613	Art76 - para 5	56	57	1.00
58	-72.712418	31.068562	Art76 - para 5	57	58	1.00
59	-72.697906	31.057472	Art76 - para 5	58	59	1.00
60	-72.683434	31.046347	Art76 - para 5	59	60	1.00
61	-72.669006	31.035185	Art76 - para 5	60	61	1.00
62	-72.654610	31.023985	Art76 - para 5	61	62	1.00
63	-72.640259	31.012751	Art76 - para 5	62	63	1.00
64	-72.625946	31.001476	Art76 - para 5	63	64	1.00
65	-72.611679	30.990170	Art76 - para 5	64	65	1.00
66	-72.597450	30.978821	Art76 - para 5	65	66	1.00
67	-72.583260	30.967438	Art76 - para 5	66	67	1.00
68	-72.569115	30.956020	Art76 - para 5	67	68	1.00
69	-72.555008	30.944563	Art76 - para 5	68	69	1.00
70	-72.540939	30.933073	Art76 - para 5	69	70	1.00
71	-72.526917	30.921545	Art76 - para 5	70	71	1.00
72	-72.512932	30.909985	Art76 - para 5	71	72	1.00
73	-72.498993	30.898382	Art76 - para 5	72	73	1.00
74	-72.485092	30.886745	Art76 - para 5	73	74	1.00
75	-72.471237	30.875078	Art76 - para 5	74	75	1.00
76	-72.457420	30.863371	Art76 - para 5	75	76	1.00
77	-72.443649	30.851627	Art76 - para 5	76	77	1.00
78	-72.429916	30.839853	Art76 - para 5	77	78	1.00



79	-72.416229	30.828041	Art76 - para 5	78	79	1.00
80	-72.402580	30.816195	Art76 - para 5	79	80	1.00
81	-72.388977	30.804314	Art76 - para 5	80	81	1.00
82	-72.375420	30.792397	Art76 - para 5	81	82	1.00
83	-72.361900	30.780445	Art76 - para 5	82	83	1.00
84	-72.348419	30.768459	Art76 - para 5	83	84	1.00
85	-72.334991	30.756439	Art76 - para 5	84	85	1.00
86	-72.321602	30.744387	Art76 - para 5	85	86	1.00
87	-72.308250	30.732298	Art76 - para 5	86	87	1.00
88	-72.294945	30.720173	Art76 - para 5	87	88	1.00
89	-72.281685	30.708015	Art76 - para 5	88	89	1.00
90	-72.268471	30.695824	Art76 - para 5	89	90	1.00
91	-72.255295	30.683598	Art76 - para 5	90	91	1.00
92	-72.242165	30.671337	Art76 - para 5	91	92	1.00
93	-72.229080	30.659048	Art76 - para 5	92	93	1.00
94	-72.176918	30.609749	Art76 - para 5	93	94	4.00
95	-72.163910	30.597403	Art76 - para 5	94	95	1.00
96	-72.150948	30.585022	Art76 - para 5	95	96	1.00
97	-72.138023	30.572607	Art76 - para 5	96	97	1.00
98	-72.125153	30.560160	Art76 - para 5	97	98	1.00
99	-72.112320	30.547680	Art76 - para 5	98	99	1.00
100	-72.099533	30.535168	Art76 - para 5	99	100	1.00
101	-72.086792	30.522617	Art76 - para 5	100	101	1.00
102	-72.074089	30.510042	Art76 - para 5	101	102	1.00
103	-72.061440	30.497431	Art76 - para 5	102	103	1.00
104	-72.048828	30.484787	Art76 - para 5	103	104	1.00
105	-72.036263	30.472113	Art76 - para 5	104	105	1.00
106	-72.023750	30.459408	Art76 - para 5	105	106	1.00
107	-72.011276	30.446665	Art76 - para 5	106	107	1.00
108	-71.998848	30.433893	Art76 - para 5	107	108	1.00
109	-71.986465	30.421089	Art76 - para 5	108	109	1.00
110	-71.974121	30.408253	Art76 - para 5	109	110	1.00
111	-71.961830	30.395388	Art76 - para 5	110	111	1.00
112	-71.949585	30.382488	Art76 - para 5	111	112	1.00
113	-71.937386	30.369556	Art76 - para 5	112	113	1.00
114	-71.913048	30.343657	Art76 - para 5	113	114	2.00
115	-71.900925	30.330671	Art76 - para 5	114	115	1.00
116	-71.888855	30.317656	Art76 - para 5	115	116	1.00
117	-71.876823	30.304613	Art76 - para 5	116	117	1.00
118	-71.864838	30.291538	Art76 - para 5	117	118	1.00



119	-71.852905	30.278433	Art76 - para 5	118	119	1.00
120	-71.841011	30.265295	Art76 - para 5	119	120	1.00
121	-71.829163	30.252129	Art76 - para 5	120	121	1.00
122	-71.817368	30.238934	Art76 - para 5	121	122	1.00
123	-71.805618	30.225700	Art76 - para 5	122	123	1.00
124	-71.793907	30.212446	Art76 - para 5	123	124	1.00
125	-71.782249	30.199162	Art76 - para 5	124	125	1.00
126	-71.770638	30.185844	Art76 - para 5	125	126	1.00
127	-71.759071	30.172495	Art76 - para 5	126	127	1.00
128	-71.747559	30.159117	Art76 - para 5	127	128	1.00
129	-71.736084	30.145710	Art76 - para 5	128	129	1.00
130	-71.724655	30.132275	Art76 - para 5	129	130	1.00
131	-71.713280	30.118811	Art76 - para 5	130	131	1.00
132	-71.701950	30.105314	Art76 - para 5	131	132	1.00
133	-71.690666	30.091791	Art76 - para 5	132	133	1.00
134	-71.679436	30.078241	Art76 - para 5	133	134	1.00
135	-71.668243	30.064663	Art76 - para 5	134	135	1.00
136	-71.657104	30.051052	Art76 - para 5	135	136	1.00
137	-71.646011	30.037416	Art76 - para 5	136	137	1.00
138	-71.634972	30.023750	Art76 - para 5	137	138	1.00
139	-71.623970	30.010056	Art76 - para 5	138	139	1.00
140	-71.613022	29.996332	Art76 - para 5	139	140	1.00
141	-71.602119	29.982580	Art76 - para 5	140	141	1.00
142	-71.591270	29.968805	Art76 - para 5	141	142	1.00
143	-71.580460	29.954998	Art76 - para 5	142	143	1.00
144	-71.569702	29.941166	Art76 - para 5	143	144	1.00
145	-71.558998	29.927305	Art76 - para 5	144	145	1.00
146	-71.548340	29.913416	Art76 - para 5	145	146	1.00
147	-71.537727	29.899500	Art76 - para 5	146	147	1.00
148	-71.527161	29.885557	Art76 - para 5	147	148	1.00
149	-71.516647	29.871590	Art76 - para 5	148	149	1.00
150	-71.506180	29.857590	Art76 - para 5	149	150	1.00
151	-71.495758	29.843567	Art76 - para 5	150	151	1.00
152	-71.485390	29.829515	Art76 - para 5	151	152	1.00
153	-71.475075	29.815439	Art76 - para 5	152	153	1.00
154	-71.464798	29.801336	Art76 - para 5	153	154	1.00
155	-71.454575	29.787207	Art76 - para 5	154	155	1.00
156	-71.444405	29.773050	Art76 - para 5	155	156	1.00
157	-71.434280	29.758871	Art76 - para 5	156	157	1.00
158	-71.424210	29.744661	Art76 - para 5	157	158	1.00



159	-71.414177	29.730429	Art76 - para 5	158	159	1.00
160	-71.404205	29.716169	Art76 - para 5	159	160	1.00
161	-71.394279	29.701885	Art76 - para 5	160	161	1.00
162	-71.384399	29.687576	Art76 - para 5	161	162	1.00
163	-71.374573	29.673241	Art76 - para 5	162	163	1.00
164	-71.364792	29.658876	Art76 - para 5	163	164	1.00
165	-71.355064	29.644493	Art76 - para 5	164	165	1.00
166	-71.345383	29.630083	Art76 - para 5	165	166	1.00
167	-71.335754	29.615648	Art76 - para 5	166	167	1.00
168	-71.326172	29.601187	Art76 - para 5	167	168	1.00
169	-71.316643	29.586704	Art76 - para 5	168	169	1.00
170	-70.573524	28.842089	Art76 - para 5	169	170	59.23
171	-70.558540	28.831835	Art76 - para 5	170	171	1.00
172	-70.543594	28.821539	Art76 - para 5	171	172	1.00
173	-70.528687	28.811207	Art76 - para 5	172	173	1.00
174	-70.513809	28.800838	Art76 - para 5	173	174	1.00
175	-70.498970	28.790426	Art76 - para 5	174	175	1.00
176	-70.484169	28.779976	Art76 - para 5	175	176	1.00
177	-70.469406	28.769487	Art76 - para 5	176	177	1.00
178	-70.454674	28.758961	Art76 - para 5	177	178	1.00
179	-70.439987	28.748398	Art76 - para 5	178	179	1.00
180	-70.425331	28.737789	Art76 - para 5	179	180	1.00
181	-70.410713	28.727150	Art76 - para 5	180	181	1.00
182	-70.396141	28.716471	Art76 - para 5	181	182	1.00
183	-70.381592	28.705751	Art76 - para 5	182	183	1.00
184	-70.367088	28.694990	Art76 - para 5	183	184	1.00
185	-70.352623	28.684198	Art76 - para 5	184	185	1.00
186	-70.338196	28.673367	Art76 - para 5	185	186	1.00
187	-70.323807	28.662497	Art76 - para 5	186	187	1.00
188	-70.309456	28.651590	Art76 - para 5	187	188	1.00
189	-70.295143	28.640644	Art76 - para 5	188	189	1.00
190	-70.280869	28.629662	Art76 - para 5	189	190	1.00
191	-70.266632	28.618643	Art76 - para 5	190	191	1.00
192	-70.252434	28.607584	Art76 - para 5	191	192	1.00
193	-70.238274	28.596491	Art76 - para 5	192	193	1.00
194	-70.224152	28.585360	Art76 - para 5	193	194	1.00
195	-70.210068	28.574190	Art76 - para 5	194	195	1.00
196	-70.196030	28.562984	Art76 - para 5	195	196	1.00
197	-70.182022	28.551744	Art76 - para 5	196	197	1.00
198	-70.168060	28.540464	Art76 - para 5	197	198	1.00



199	-70.154137	28.529150	Art76 - para 5	198	199	1.00
200	-70.140251	28.517799	Art76 - para 5	199	200	1.00
201	-70.126404	28.506413	Art76 - para 5	200	201	1.00
202	-70.112595	28.494987	Art76 - para 5	201	202	1.00
203	-70.098831	28.483526	Art76 - para 5	202	203	1.00
204	-70.085106	28.472034	Art76 - para 5	203	204	1.00
205	-70.079506	28.467310	Art76 - para 5	204	205	0.40
206	-70.054115	28.348362	Art76 - para 4(a)(ii)	205	206	7.20
207	-70.052414	28.340139	Art76 - para 4(a)(ii)	206	207	0.50
208	-70.050789	28.331909	Art76 - para 4(a)(ii)	207	208	0.50
209	-70.049248	28.323668	Art76 - para 4(a)(ii)	208	209	0.50
210	-70.047775	28.315414	Art76 - para 4(a)(ii)	209	210	0.50
211	-70.046387	28.307148	Art76 - para 4(a)(ii)	210	211	0.50
212	-70.045082	28.298874	Art76 - para 4(a)(ii)	211	212	0.50
213	-70.043846	28.290590	Art76 - para 4(a)(ii)	212	213	0.50
214	-70.042694	28.282299	Art76 - para 4(a)(ii)	213	214	0.50
215	-70.041618	28.273996	Art76 - para 4(a)(ii)	214	215	0.50
216	-70.040619	28.265686	Art76 - para 4(a)(ii)	215	216	0.50
217	-70.039696	28.257372	Art76 - para 4(a)(ii)	216	217	0.50
218	-70.038857	28.249050	Art76 - para 4(a)(ii)	217	218	0.50
219	-70.038094	28.240721	Art76 - para 4(a)(ii)	218	219	0.50
220	-70.037407	28.232389	Art76 - para 4(a)(ii)	219	220	0.50
221	-70.036804	28.224049	Art76 - para 4(a)(ii)	220	221	0.50
222	-70.036278	28.215706	Art76 - para 4(a)(ii)	221	222	0.50
223	-70.035828	28.207361	Art76 - para 4(a)(ii)	222	223	0.50
224	-70.035461	28.199011	Art76 - para 4(a)(ii)	223	224	0.50
225	-70.035164	28.190660	Art76 - para 4(a)(ii)	224	225	0.50
226	-70.034958	28.182304	Art76 - para 4(a)(ii)	225	226	0.50
227	-70.034821	28.173950	Art76 - para 4(a)(ii)	226	227	0.50
228	-70.034767	28.165596	Art76 - para 4(a)(ii)	227	228	0.50
229	-70.034790	28.157240	Art76 - para 4(a)(ii)	228	229	0.50
230	-70.034889	28.148884	Art76 - para 4(a)(ii)	229	230	0.50
231	-70.035072	28.140530	Art76 - para 4(a)(ii)	230	231	0.50
232	-70.035332	28.132177	Art76 - para 4(a)(ii)	231	232	0.50
233	-70.035667	28.123827	Art76 - para 4(a)(ii)	232	233	0.50
234	-70.036079	28.115480	Art76 - para 4(a)(ii)	233	234	0.50
235	-70.036575	28.107138	Art76 - para 4(a)(ii)	234	235	0.50
236	-70.037148	28.098795	Art76 - para 4(a)(ii)	235	236	0.50
237	-70.037796	28.090458	Art76 - para 4(a)(ii)	236	237	0.50
238	-70.038528	28.082127	Art76 - para 4(a)(ii)	237	238	0.50



239	-70.039330	28.073803	Art76 - para 4(a)(ii)	238	239	0.50
240	-70.040215	28.065485	Art76 - para 4(a)(ii)	239	240	0.50
241	-70.104263	27.066576	Art76 - para 4(a)(ii)	240	241	59.86
242	-70.104401	27.058220	Art76 - para 4(a)(ii)	241	242	0.50
243	-70.104614	27.049866	Art76 - para 4(a)(ii)	242	243	0.50
244	-70.104904	27.041512	Art76 - para 4(a)(ii)	243	244	0.50
245	-70.105278	27.033163	Art76 - para 4(a)(ii)	244	245	0.50
246	-70.105728	27.024817	Art76 - para 4(a)(ii)	245	246	0.50
247	-70.106247	27.016470	Art76 - para 4(a)(ii)	246	247	0.50
248	-70.106850	27.008131	Art76 - para 4(a)(ii)	247	248	0.50
249	-70.107529	26.999800	Art76 - para 4(a)(ii)	248	249	0.50
250	-70.108292	26.991468	Art76 - para 4(a)(ii)	249	250	0.50
251	-70.109123	26.983145	Art76 - para 4(a)(ii)	250	251	0.50
252	-70.110039	26.974829	Art76 - para 4(a)(ii)	251	252	0.50
253	-70.111023	26.966518	Art76 - para 4(a)(ii)	252	253	0.50
254	-70.112091	26.958218	Art76 - para 4(a)(ii)	253	254	0.50
255	-70.113235	26.949921	Art76 - para 4(a)(ii)	254	255	0.50
256	-70.114456	26.941635	Art76 - para 4(a)(ii)	255	256	0.50
257	-70.115753	26.933357	Art76 - para 4(a)(ii)	256	257	0.50
258	-70.117126	26.925095	Art76 - para 4(a)(ii)	257	258	0.50
259	-70.118576	26.916842	Art76 - para 4(a)(ii)	258	259	0.50
260	-70.120102	26.908594	Art76 - para 4(a)(ii)	259	260	0.50
261	-70.121704	26.900362	Art76 - para 4(a)(ii)	260	261	0.50
262	-70.123383	26.892141	Art76 - para 4(a)(ii)	261	262	0.50
263	-70.125137	26.883934	Art76 - para 4(a)(ii)	262	263	0.50
264	-70.126968	26.875740	Art76 - para 4(a)(ii)	263	264	0.50
265	-70.128876	26.867561	Art76 - para 4(a)(ii)	264	265	0.50
266	-70.130859	26.859394	Art76 - para 4(a)(ii)	265	266	0.50
267	-70.132919	26.851248	Art76 - para 4(a)(ii)	266	267	0.50
268	-70.135048	26.843109	Art76 - para 4(a)(ii)	267	268	0.50
269	-70.137260	26.834991	Art76 - para 4(a)(ii)	268	269	0.50
270	-70.139542	26.826891	Art76 - para 4(a)(ii)	269	270	0.50
271	-70.141899	26.818804	Art76 - para 4(a)(ii)	270	271	0.50
272	-70.144333	26.810738	Art76 - para 4(a)(ii)	271	272	0.50
273	-70.146843	26.802687	Art76 - para 4(a)(ii)	272	273	0.50
274	-70.149422	26.794659	Art76 - para 4(a)(ii)	273	274	0.50
275	-70.152084	26.786648	Art76 - para 4(a)(ii)	274	275	0.50
276	-70.154808	26.778656	Art76 - para 4(a)(ii)	275	276	0.50
277	-70.157616	26.770687	Art76 - para 4(a)(ii)	276	277	0.50
278	-70.160492	26.762739	Art76 - para 4(a)(ii)	277	278	0.50



279	-70.163445	26.754812	Art76 - para 4(a)(ii)	278	279	0.50
280	-70.166466	26.746908	Art76 - para 4(a)(ii)	279	280	0.50
281	-70.169563	26.739029	Art76 - para 4(a)(ii)	280	281	0.50
282	-70.172729	26.731171	Art76 - para 4(a)(ii)	281	282	0.50
283	-70.175972	26.723333	Art76 - para 4(a)(ii)	282	283	0.50
284	-70.179283	26.715525	Art76 - para 4(a)(ii)	283	284	0.50
285	-70.182671	26.707743	Art76 - para 4(a)(ii)	284	285	0.50
286	-70.435776	26.134176	Art76 - para 4(a)(ii)	285	286	36.92
287	-70.439209	26.126413	Art76 - para 4(a)(ii)	286	287	0.50
288	-70.442719	26.118677	Art76 - para 4(a)(ii)	287	288	0.50
289	-70.446289	26.110968	Art76 - para 4(a)(ii)	288	289	0.50
290	-70.449936	26.103285	Art76 - para 4(a)(ii)	289	290	0.50
291	-70.453651	26.095631	Art76 - para 4(a)(ii)	290	291	0.50
292	-70.457443	26.088001	Art76 - para 4(a)(ii)	291	292	0.50
293	-70.461296	26.080402	Art76 - para 4(a)(ii)	292	293	0.50
294	-70.465225	26.072836	Art76 - para 4(a)(ii)	293	294	0.50
295	-70.469223	26.065294	Art76 - para 4(a)(ii)	294	295	0.50
296	-70.473282	26.057787	Art76 - para 4(a)(ii)	295	296	0.50
297	-70.477417	26.050308	Art76 - para 4(a)(ii)	296	297	0.50
298	-70.481621	26.042862	Art76 - para 4(a)(ii)	297	298	0.50
299	-70.485886	26.035446	Art76 - para 4(a)(ii)	298	299	0.50
300	-70.490219	26.028063	Art76 - para 4(a)(ii)	299	300	0.50
301	-70.494629	26.020712	Art76 - para 4(a)(ii)	300	301	0.50
302	-70.499100	26.013393	Art76 - para 4(a)(ii)	301	302	0.50
303	-70.503639	26.006113	Art76 - para 4(a)(ii)	302	303	0.50
304	-70.508240	25.998863	Art76 - para 4(a)(ii)	303	304	0.50
305	-70.512909	25.991648	Art76 - para 4(a)(ii)	304	305	0.50
306	-70.517647	25.984470	Art76 - para 4(a)(ii)	305	306	0.50
307	-70.522446	25.977327	Art76 - para 4(a)(ii)	306	307	0.50
308	-70.527313	25.970222	Art76 - para 4(a)(ii)	307	308	0.50
309	-70.532249	25.963150	Art76 - para 4(a)(ii)	308	309	0.50
310	-70.537239	25.956116	Art76 - para 4(a)(ii)	309	310	0.50
311	-70.542305	25.949121	Art76 - para 4(a)(ii)	310	311	0.50
312	-70.547424	25.942163	Art76 - para 4(a)(ii)	311	312	0.50
313	-70.552612	25.935246	Art76 - para 4(a)(ii)	312	313	0.50
314	-70.557861	25.928366	Art76 - para 4(a)(ii)	313	314	0.50
315	-70.563179	25.921526	Art76 - para 4(a)(ii)	314	315	0.50
316	-70.568550	25.914726	Art76 - para 4(a)(ii)	315	316	0.50
317	-70.573990	25.907967	Art76 - para 4(a)(ii)	316	317	0.50
318	-70.579483	25.901253	Art76 - para 4(a)(ii)	317	318	0.50



319	-70.585045	25.894571	Art76 - para 4(a)(ii)	318	319	0.50
320	-70.590668	25.887939	Art76 - para 4(a)(ii)	319	320	0.50
321	-70.596344	25.881342	Art76 - para 4(a)(ii)	320	321	0.50
322	-70.602089	25.874794	Art76 - para 4(a)(ii)	321	322	0.50
323	-70.607887	25.868286	Art76 - para 4(a)(ii)	322	323	0.50
324	-70.613747	25.861824	Art76 - para 4(a)(ii)	323	324	0.50
325	-70.619659	25.855404	Art76 - para 4(a)(ii)	324	325	0.50
326	-70.625641	25.849030	Art76 - para 4(a)(ii)	325	326	0.50
327	-70.631668	25.842701	Art76 - para 4(a)(ii)	326	327	0.50
328	-70.637764	25.836418	Art76 - para 4(a)(ii)	327	328	0.50
329	-70.643906	25.830183	Art76 - para 4(a)(ii)	328	329	0.50
330	-70.650116	25.823990	Art76 - para 4(a)(ii)	329	330	0.50
331	-70.656372	25.817844	Art76 - para 4(a)(ii)	330	331	0.50
332	-70.662689	25.811749	Art76 - para 4(a)(ii)	331	332	0.50
333	-70.669060	25.805695	Art76 - para 4(a)(ii)	332	333	0.50
334	-70.675491	25.799696	Art76 - para 4(a)(ii)	333	334	0.50
335	-70.681969	25.793741	Art76 - para 4(a)(ii)	334	335	0.50
336	-70.688507	25.787838	Art76 - para 4(a)(ii)	335	336	0.50
337	-70.695091	25.781981	Art76 - para 4(a)(ii)	336	337	0.50
338	-70.701736	25.776176	Art76 - para 4(a)(ii)	337	338	0.50
339	-70.708427	25.770420	Art76 - para 4(a)(ii)	338	339	0.50
340	-70.715172	25.764713	Art76 - para 4(a)(ii)	339	340	0.50
341	-70.721970	25.759060	Art76 - para 4(a)(ii)	340	341	0.50
342	-70.728821	25.753454	Art76 - para 4(a)(ii)	341	342	0.50
343	-70.735718	25.747902	Art76 - para 4(a)(ii)	342	343	0.50
344	-70.742668	25.742403	Art76 - para 4(a)(ii)	343	344	0.50
345	-70.749672	25.736954	Art76 - para 4(a)(ii)	344	345	0.50
346	-70.756714	25.731560	Art76 - para 4(a)(ii)	345	346	0.50
347	-70.763817	25.726217	Art76 - para 4(a)(ii)	346	347	0.50
348	-70.770958	25.720928	Art76 - para 4(a)(ii)	347	348	0.50
349	-70.778152	25.715694	Art76 - para 4(a)(ii)	348	349	0.50
350	-70.785393	25.710512	Art76 - para 4(a)(ii)	349	350	0.50
351	-70.792679	25.705385	Art76 - para 4(a)(ii)	350	351	0.50
352	-70.800018	25.700312	Art76 - para 4(a)(ii)	351	352	0.50
353	-70.807396	25.695297	Art76 - para 4(a)(ii)	352	353	0.50
354	-70.814819	25.690336	Art76 - para 4(a)(ii)	353	354	0.50
355	-70.822289	25.685432	Art76 - para 4(a)(ii)	354	355	0.50
356	-70.829803	25.680582	Art76 - para 4(a)(ii)	355	356	0.50
357	-70.837357	25.675793	Art76 - para 4(a)(ii)	356	357	0.50
358	-70.844963	25.671055	Art76 - para 4(a)(ii)	357	358	0.50



359	-70.852608	25.666372	Art76 - para 4(a)(ii)	358	359	0.50
360	-70.860291	25.661753	Art76 - para 4(a)(ii)	359	360	0.50
361	-70.868019	25.657190	Art76 - para 4(a)(ii)	360	361	0.50
362	-70.875786	25.652685	Art76 - para 4(a)(ii)	361	362	0.50
363	-70.883591	25.648237	Art76 - para 4(a)(ii)	362	363	0.50
364	-70.891441	25.643850	Art76 - para 4(a)(ii)	363	364	0.50
365	-70.899330	25.639521	Art76 - para 4(a)(ii)	364	365	0.50
366	-70.907257	25.635252	Art76 - para 4(a)(ii)	365	366	0.50
367	-70.915222	25.631041	Art76 - para 4(a)(ii)	366	367	0.50
368	-70.923225	25.626892	Art76 - para 4(a)(ii)	367	368	0.50
369	-70.931267	25.622805	Art76 - para 4(a)(ii)	368	369	0.50
370	-70.939346	25.618773	Art76 - para 4(a)(ii)	369	370	0.50
371	-70.947456	25.614801	Art76 - para 4(a)(ii)	370	371	0.50
372	-70.955605	25.610895	Art76 - para 4(a)(ii)	371	372	0.50
373	-70.963791	25.607048	Art76 - para 4(a)(ii)	372	373	0.50
374	-70.972008	25.603262	Art76 - para 4(a)(ii)	373	374	0.50
375	-70.980263	25.599543	Art76 - para 4(a)(ii)	374	375	0.50
376	-70.988548	25.595879	Art76 - para 4(a)(ii)	375	376	0.50
377	-70.996872	25.592279	Art76 - para 4(a)(ii)	376	377	0.50
378	-71.005219	25.588739	Art76 - para 4(a)(ii)	377	378	0.50
379	-71.013603	25.585268	Art76 - para 4(a)(ii)	378	379	0.50
380	-71.022018	25.581856	Art76 - para 4(a)(ii)	379	380	0.50
381	-71.030464	25.578510	Art76 - para 4(a)(ii)	380	381	0.50
382	-71.038940	25.575224	Art76 - para 4(a)(ii)	381	382	0.50
383	-71.047447	25.572004	Art76 - para 4(a)(ii)	382	383	0.50
384	-71.055977	25.568851	Art76 - para 4(a)(ii)	383	384	0.50
385	-71.064117	25.565907	Art76 - para 4(a)(ii)	384	385	0.47

Table 1: List of coordinates of fixed points (FP) defining the outer limit of the Continental Shelf. All coordinates relate to the WGS84 geodetic reference system.