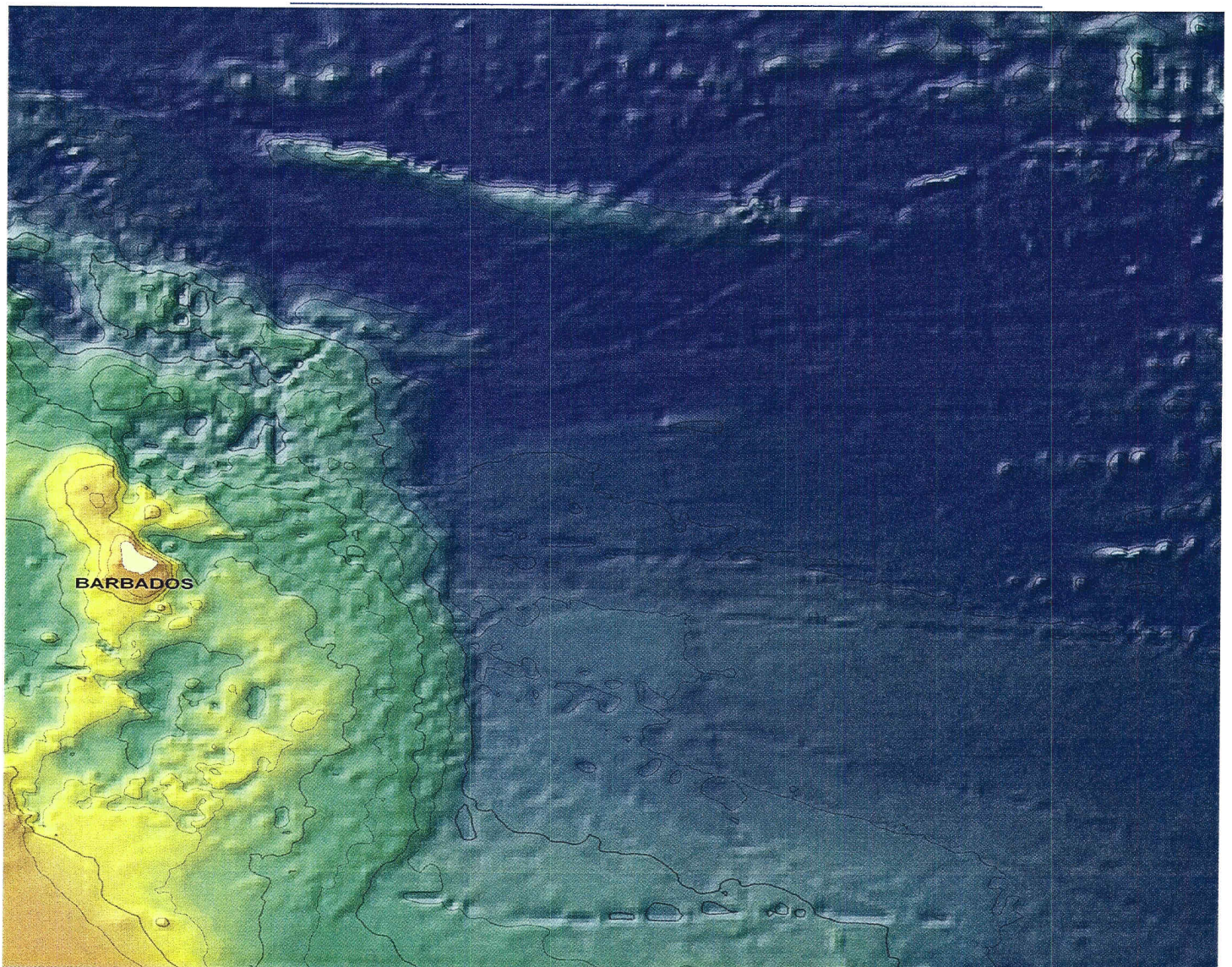


GOVERNMENT OF BARBADOS
CONTINENTAL SHELF SUBMISSION

EXECUTIVE SUMMARY



The following Ministries, Departments and Statutory Corporations of the Government of Barbados contributed to the preparation of this submission:

Office of the Special Envoy for the Environment

Ministry of Foreign Affairs, Foreign Trade and International Business

Ministry of Finance, Economic Affairs and Energy

Office of the Attorney General

Ministry of Family, Youth Affairs, Sports and the Environment

Coastal Zone Management Unit

Barbados National Oil Company Limited

Barbados Coast Guard

Land and Survey Department

The following acted as advisors to the Government of Barbados in the preparation of this submission:

National Oceanography Centre, Southampton

Latham and Watkins (London) LLP

© Copyright Government of Barbados 2008

1.0 EXECUTIVE SUMMARY

1.1. INTRODUCTION

- 1.1.1 The Government of Barbados is party to the United Nations Convention on the Law of the Sea (UNCLOS or the Convention), which it signed the day it was opened for signature and which it ratified on the 12th of October, 1993.
- 1.1.2 This submission is made by the Government of Barbados to the United Nations Commission on the Limits of the Continental Shelf (CLCS or the Commission) pursuant to Article 76, paragraph 8 of the Convention in respect of the establishment of the outer limits of the continental shelf beyond 200 nautical miles (M) from the baselines from which the breadth of the territorial sea of Barbados is measured.
- 1.1.3 The outer limits of the continental shelf of Barbados as herein submitted to the Commission are based on the provisions of Article 76 and of Annex II of the Convention.
- 1.1.4 Barbados' continental shelf beyond 200M is divided into two sections, the southern section and the northern section. For the purpose of this submission, the southern section will be labelled and referred to as the "Southern Area" and the northern section will be labelled and referred to as the "Northern Area".

1.2. RELEVANT PROVISIONS OF ARTICLE 76

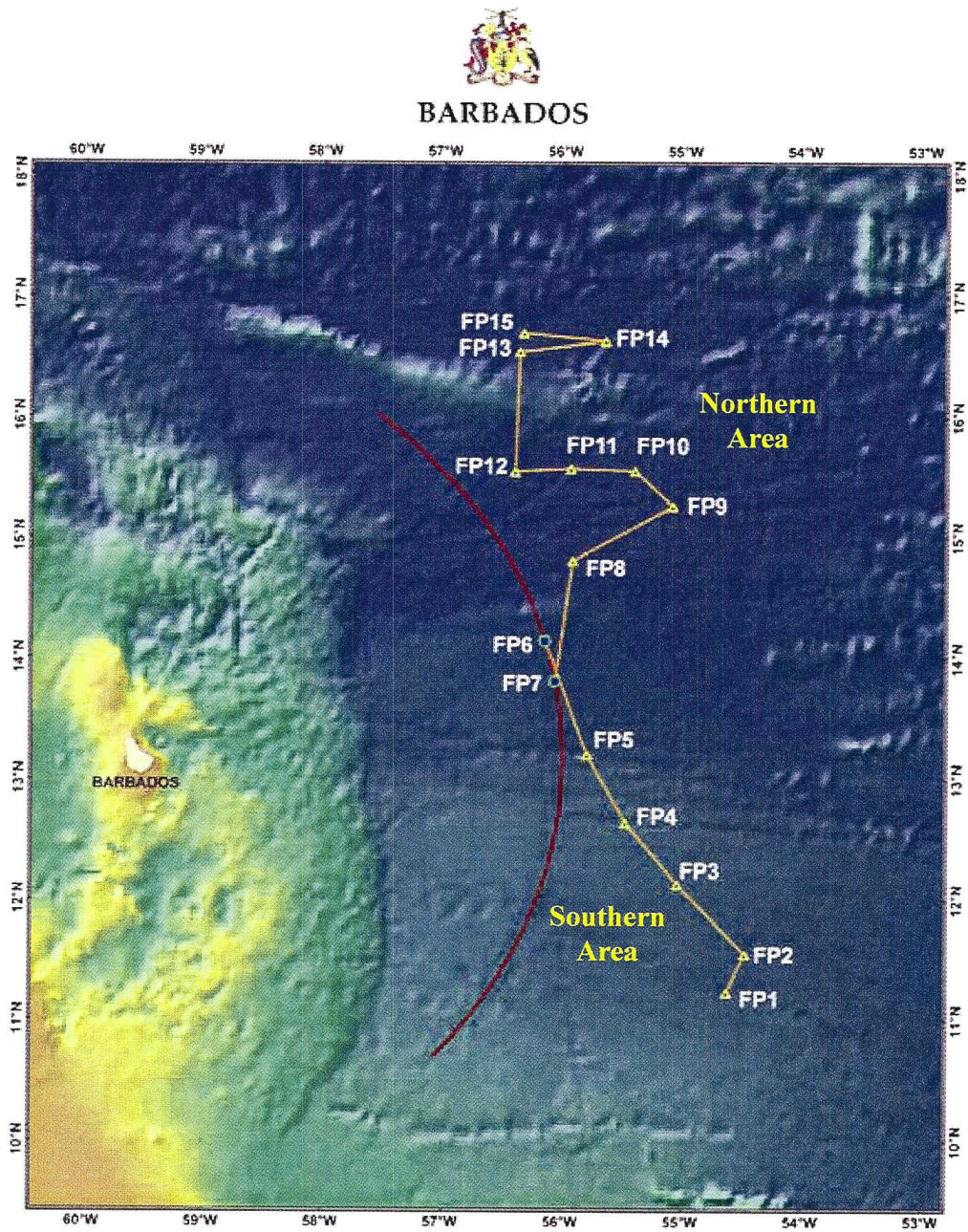
- 1.2.1 The outer limits of Barbados' continental shelf in both the Southern and Northern areas are based on the provisions of Article 76 (4) (b) of the Convention.

1.3. THE OUTER LIMITS OF BARBADOS' SHELF

1.3.1 The outer limits of Barbados' continental shelf are separated into a Southern and Northern Area. Article 76 (4) (a) (i) is the relevant provision of the Convention in respect of both areas. In the Southern Area, six points have been identified. In the Northern Area, nine points have been identified (Table 1, Figure 1).

Table 1: Final outer limit positions defining the continental shelf of Barbados

Point Number	Latitude (N)	Longitude (W)	Point origin	Distance to next outer limit point (M)	Outer Limit Area
FP1	11.23078403	54.6281660	1 % line	20.785	South
FP2	11.54559998	54.4778900	1 % line	48.269	South
FP3	12.13042600	55.0440520	1 % line	39.700	South
FP4	12.64148998	55.4763000	1 % line	38.519	South
FP5	13.20393002	55.7978200	1 % line	39.678	South
FP6	14.14685243	56.1515600	200M	60.000	South
FP7	13.81369771	56.0669514	200M	60.000	North
FP8	14.80800296	55.9218750	1 % line	55.291	North
FP9	15.25911999	55.0904300	1 % line	25.234	North
FP10	15.55023304	55.4058330	1 % line	31.067	North
FP11	15.56913104	55.9418690	1 % line	26.875	North
FP12	15.54371401	56.4051390	1 % line	59.656	North
FP13	16.54152202	56.3692530	1 % line	41.460	North
FP14	16.63085303	55.6557250	1 % line	39.419	North
FP15	16.69210601	56.3371310	1 % line	N/A	North



Full outer limit line for the continental shelf of Barbados

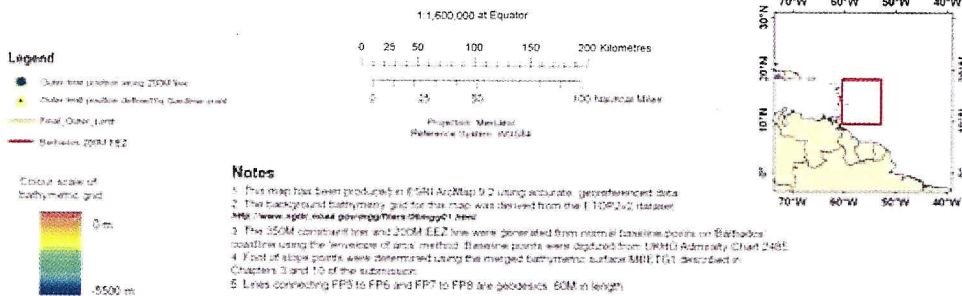


Figure 1: Map showing the final outer limit of the continental shelf of Barbados

1.4. ABSENCE OF DISPUTES

1.4.1 This submission and the recommendations of the Commission made in respect of it are, in accordance with, Article 76 (10) and Article 9 of Annex II of the Convention, without prejudice to the question of the delimitation of the continental shelf between States. There are areas of potential overlapping entitlements in respect of the continental shelf beyond 200M in both the Southern (the Republic of Guyana and the Republic of Suriname) and Northern areas (the French Republic). The governments of the Republic of Suriname, the Republic of Guyana and the French Republic, have each agreed not to object to the consideration by the Commission of Barbados' submission. The award of an UNCLOS Annex VII Tribunal in April 2006 determined the areas of maritime entitlement as between Barbados and the Republic of Trinidad and Tobago.

1.5 NAMES OF COMMISSION MEMBERS WHO PROVIDED ADVICE DURING THE PREPARATION OF THE SUBMISSION

1.5.1 No member of the Commission provided advice to Barbados in the preparation of this submission.