

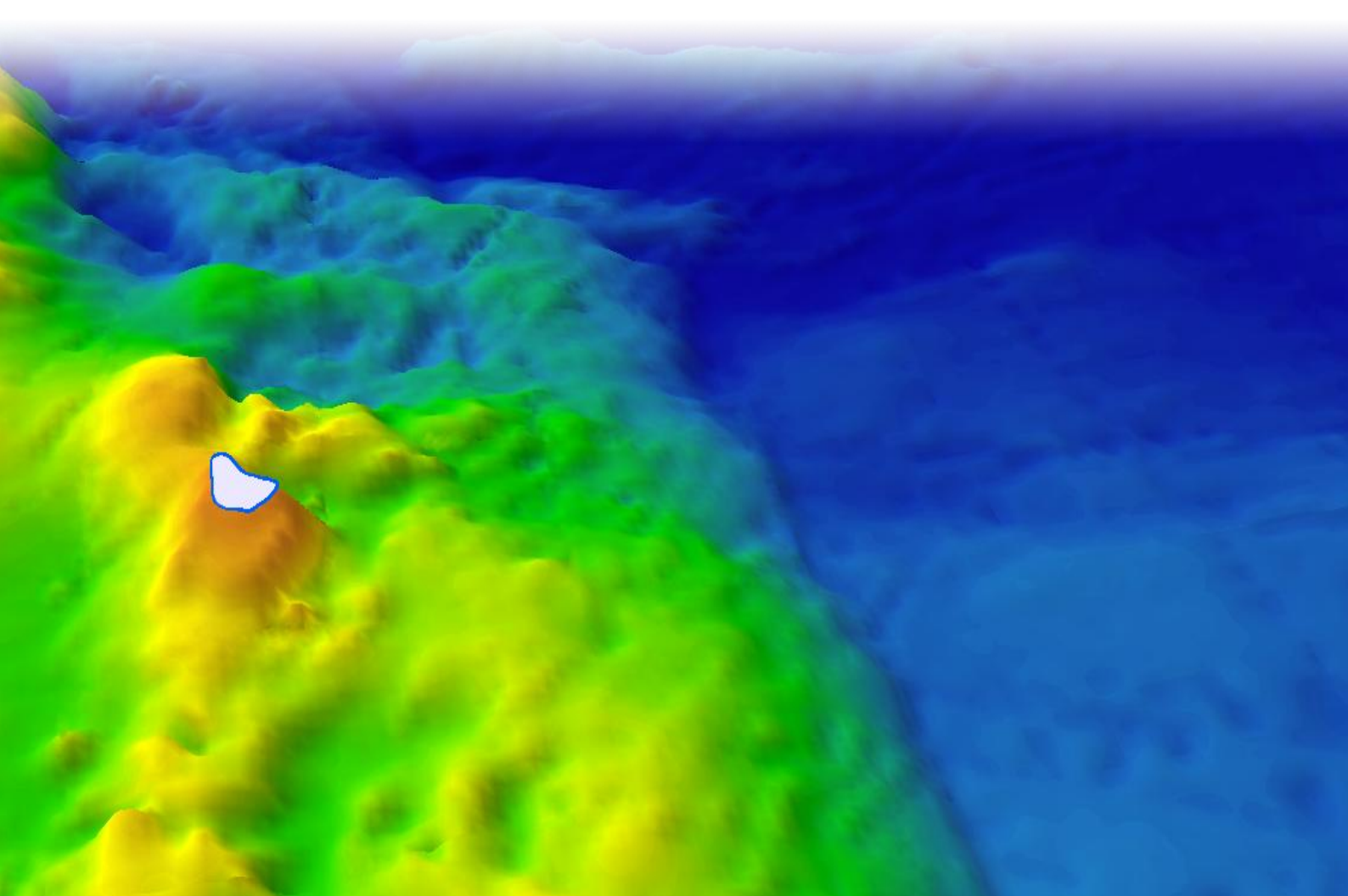


Government of Barbados

Continental Shelf Submission

EXECUTIVE SUMMARY

Revised January 2012



1.0 EXECUTIVE SUMMARY

1.1. INTRODUCTION

- 1.1.1 The Government of Barbados is party to the United Nations Convention on the Law of the Sea (UNCLOS or the Convention), which it signed the day it was opened for signature and which it ratified on the 12th of October, 1993.
- 1.1.2 On the 8th May 2008, the Government of Barbados made a submission to the United Nations Commission on the Limits of the Continental Shelf (CLCS or the Commission) pursuant to Article 76, paragraph 8 of the Convention in respect of the establishment of the outer limits of the continental shelf beyond 200 nautical miles (M) from the baselines from which the breadth of the territorial sea of Barbados is measured.
- 1.1.3 Pursuant to the receipt of recommendations from the Commission, dated 15th April 2010 the Government of Barbados sought clarification concerning Gardiner Point 12 (GP12) in the Submission by Barbados.
- 1.1.4 Following exchange of correspondence between the Government of Barbados and the Commission, the Commission advised in a letter dated April 21, 2011 (Annex I, Revised Main Body):

“...the most appropriate way to address this matter would be for the Government of Barbados to make a revised submission, in which it may wish to focus only on the particulars referred to in the communication of 14 February 2011.

It should be noted that the requirements of Annex III of Rules of Procedure of the Commission regarding the format of the submission and number of copies would apply. However, given the specific nature of this matter which concerns only one single issue, the content of the revised submission may also use, as appropriate, cross-references to material already supplied to the Commission.”

1.1.5 In accordance with the Commission’s letter, the Executive Summary contained in Barbados’ original Submission is hereby amended, to include a revised Table of final outer limit points (Table 1 in the original Executive Summary) and a revised map of the final outer continental shelf limit (Figure 1 in the original Executive Summary). A copy of the original Executive Summary is attached as Annex II (Revised Main Body) for reference.

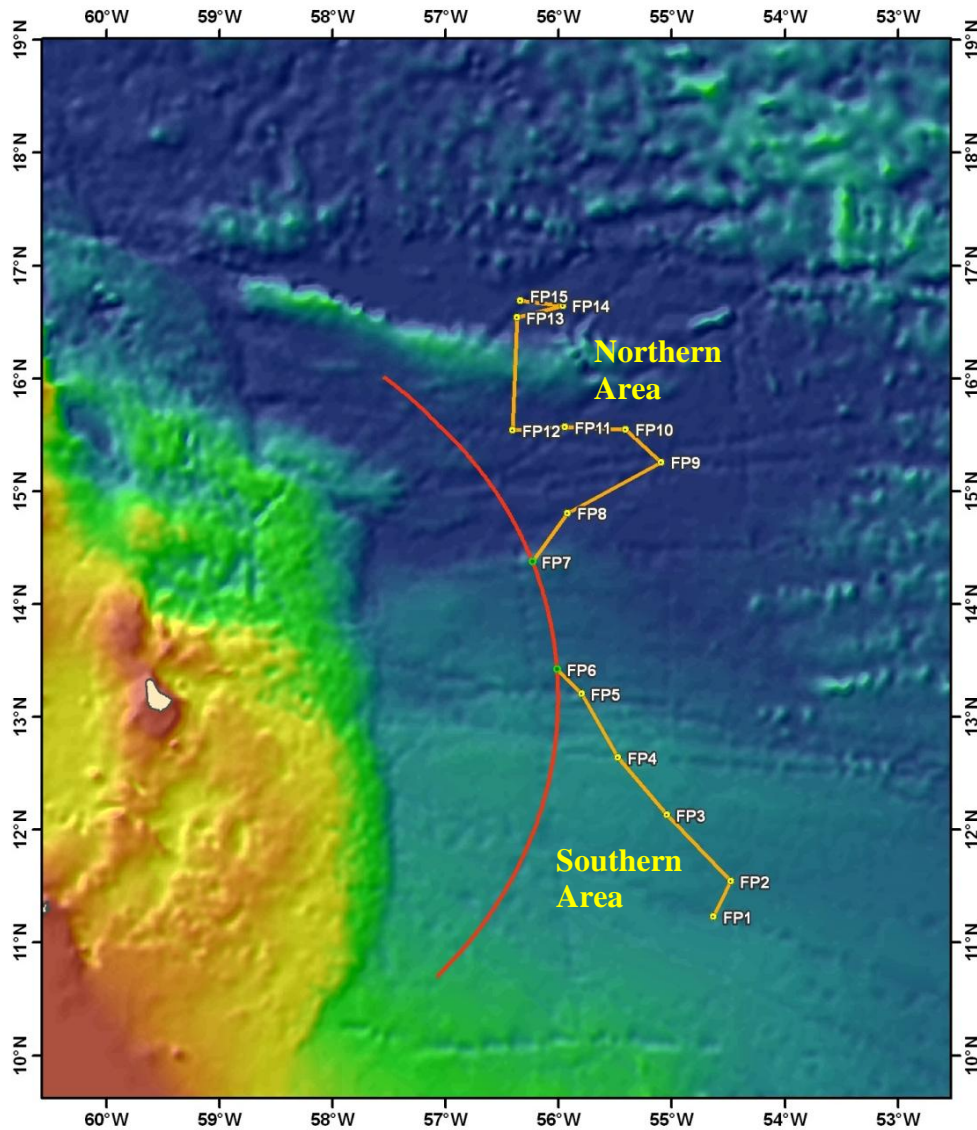
1.1.6 This revised submission is made by the Government of Barbados to the United Nations Commission on the Limits of the Continental Shelf (CLCS or the Commission) pursuant to Article 76, paragraph 8 of the Convention in respect of the establishment of the outer limits of the continental shelf beyond 200 nautical miles (M) from the baselines from which the breadth of the territorial sea of Barbados is measured.

Revised Table 1: Final outer limit positions defining the continental shelf of Barbados

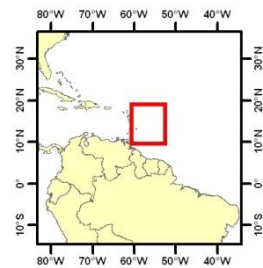
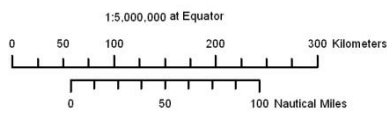
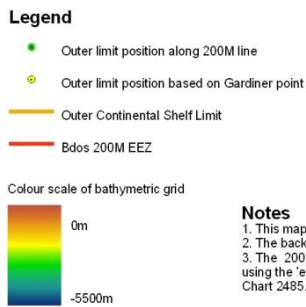
Point Number	Latitude (N)	Longitude (W)	Point origin	Distance to next outer limit point (M)	Outer Limit Area
FP1	11.23078403	54.6281660	1 % line	20.785	South
FP2	11.54559998	54.4778900	1 % line	48.269	South
FP3	12.13042600	55.0440520	1 % line	39.700	South
FP4	12.64148998	55.4763000	1 % line	38.519	South
FP5	13.20393002	55.7978200	1 % line	18.230	South
FP6	13.42436869	56.0133088	200M	N/A	South
FP7	14.37652904	56.2323277	200M	31.476	North
FP8	14.80800296	55.9218750	1 % line	55.291	North
FP9	15.25911999	55.0904300	1 % line	25.234	North
FP10	15.55023304	55.4058330	1 % line	31.067	North
FP11	15.56913104	55.9418690	1 % line	26.875	North
FP12	15.54371401	56.4051390	1 % line	59.656	North
FP13	16.54152202	56.3692530	1 % line	24.281	North
FP14	16.64739440	55.9624056	1 % line	21.747	North
FP15	16.69210601	56.3371310	1 % line	N/A	North



BARBADOS



Full Outer Limit Line for the Continental Shelf of Barbados



Notes

1. This map has been produced in ESRI ArcMap 9.3 using accurate, georeferenced data.
2. The background bathymetry grid for this map was derived from the ETOP2v2 dataset.
3. The 200M EEZ line was generated from normal baseline points on Barbados' coastline using the 'envelope of arcs' method. Baseline points were digitized from UKHO Admiralty Chart 2485.

Revised Figure 1: Map showing the final outer limit of the continental shelf of Barbados