



Commission on the Limits of the Continental Shelf

RECOMMENDATIONS OF THE COMMISSION ON THE LIMITS OF THE CONTINENTAL SHELF IN REGARD TO THE REVISED SUBMISSION MADE BY BARBADOS ON 25 JULY 2011

Recommendations prepared by the Subcommittee established for the consideration of the revised Submission made by Barbados

Adopted by the Subcommittee on 2 April 2012, and submitted to the Commission on the Limits of the Continental Shelf for consideration and approval by the Commission

Adopted by the Commission, with amendments, on 13 April 2012

(page left intentionally blank)

TABLE OF CONTENTS

I. INTRODUCTION	1
II. CONTENTS OF THE SUBMISSION	3
A. Original Submission	3
B. Communications and additional material	3
III. RECOMMENDATIONS.....	3
1. The establishment of the outer edge of the continental margin.....	3
1.1 The application of the sediment thickness formula.....	3
1.1.1 Initial Submission of 8 May 2008.....	3
1.1.2 Revised Submission of 25 July 2011	5
1.2 Recommendations.....	5
2. The delineation of the outer limits of the continental shelf	5
2.1 The application of constraint criteria	5
2.2 Recommendations.....	7
ANNEX I TABLES	10
ANNEX II LIST OF THE MATERIAL CONTAINED IN THE REVISED SUBMISSION OF BARBADOS MADE TO THE COMMISSION ON 25 JULY 2011	11
ANNEX III LIST OF ADDITIONAL MATERIAL SUBMITTED TO THE COMMISSION BY BARBADOS	12
ANNEX IV SUMMARY OF RECOMMENDATIONS OF THE COMMISSION ON THE LIMITS OF THE CONTINENTAL SHELF IN REGARD TO THE REVISED SUBMISSION MADE BY BARBADOS ON 25 JULY 2011.....	13

LIST OF TERMS AND ABBREVIATIONS

Acronyms	
DOALOS	Division for Ocean Affairs and Law of the Sea, Office of Legal Affairs
FOS	Foot of the continental slope
Abbreviated Terms	
Critical FOS Points	Foot of the continental slope points that generate formula fixed points on the line of the outer limits of the continental shelf
FOS Points	Foot of the continental slope points
Depth Constraint	The constraint line constructed at 100 M from the 2500 metre isobaths in accordance with article 76, paragraphs 5 and 6, of the Convention
Distance Constraint	The constraint line constructed at 350 M from the territorial sea baseline in accordance with article 76, paragraphs 5 and 6, of the Convention
M	Nautical mile
Relevant FOS point	Foot of the continental slope points that generate formula fixed points on the outer edge of the continental margin that are necessary for the construction of the outer limits of the continental shelf
Secretary-General	The Secretary-General of the United Nations
Sediment Thickness Formula Points	Points determined from the application of Article 76, paragraph 4(a)(i), of the Convention (also informally referred to as Gardiner points)
Territorial Sea Baselines	The baselines from which the breadth of the territorial sea is measured
The Guidelines	The Scientific and Technical Guidelines of the Commission (CLCS/11 and CLCS/11/Add.1)
The Commission	The Commission on the Limits of the Continental Shelf
The Convention	The United Nations Convention on the Law of the Sea of 10 December 1982
The Rules of Procedure	The Rules of Procedure of the Commission (CLCS/40/Rev.1)
60 M Formula Points	Points determined from the application of article 76, paragraph 4(a)(ii), of the Convention (also informally referred to as Hedberg points)
200 M Limit	The line at 200 M from the baselines from which the breadth of the territorial sea is measured
Use of Terms	
Determine	the foot of the continental slope
Delineate	the outer edge of the continental margin (in terms of construction of the outer edge of the continental margin by establishing and connecting fixed points)
Delineate	the outer limits of the continental shelf (in terms of construction of the outer limits of the continental shelf by establishing and connecting fixed points)
Establish	the outer edge of the continental margin (in terms of following procedure in the Convention for submitting the outer edge of the continental margin as basis for the outer limits of the continental shelf)
Establish	the outer limits of the continental shelf (in terms of following procedure in the Convention for the submission of the outer limits of the continental shelf)

I. INTRODUCTION

- 1 On 25 July 2011, Barbados submitted a revised Submission to the Commission on the Limits of the Continental Shelf through the Secretary-General of the United Nations, information on the limits of the continental shelf beyond 200 nautical miles from the baselines from which the breadth of the territorial sea is measured, in accordance with Article 76, paragraph 8 of the United Nations Convention on the Law of the Sea of 10 December 1982. This revised Submission was made pursuant to an exchange of correspondence between the Government of Barbados and the Commission subsequent to the Recommendations of the Commission in regard to an initial Submission made by Barbados on 8 May 2008.
- 2 The Subcommission to examine the initial Submission made by Barbados was established during the twenty-third session of the Commission, on 27 March 2009 and comprised the following members: Messrs. Alexandre Tagore Medeiros de Albuquerque, Osvaldo Pedro Astiz, Peter F. Croker, Wenzheng Lu, Isaac Owusu Oduro, Sivaramakrishnan Rajan and Michael Anselme Marc Rosette. The Subcommission elected Mr. Rajan as its Chairperson, and Messrs. Croker and Oduro as its Vice-Chairpersons.
- 3 The Subcommission carried out its examination of the initial Submission during the following sessions: twenty-third, resumed twenty-third, twenty-fourth, resumed twenty-fourth, and twenty-fifth. The Subcommission adopted its Recommendations on 6 April 2010, and submitted them to the Commission on 8 April 2010 for consideration and approval.
- 4 The recommendations of the Subcommission for the initial Submission were adopted by the Commission on 15 April 2010, taking into consideration the internal procedures and the methodology outlined in the following official documents of the Commission: the Rules of Procedure; the Guidelines and paragraph 6 of Annex II to the Convention.
- 5 Pursuant to the receipt of the recommendations for the initial Submission from the Commission, the Government of Barbados in a letter of the 14 February 2011 sought clarification from the Commission concerning the position of Gardiner point 12 (GP12) in the Submission.
- 6 Following an exchange of correspondence between the Government of Barbados and the Commission, the Commission in a letter of the 21 April 2011 informed Barbados that “[t]he nature of the information provided in the letter dated 14 February 2011 is such that it would require the Commission to carry out a new analysis of a foot of the slope point rather than a mere clarification of its Recommendations. Therefore, the Commission came to the conclusion that the most appropriate way to address this matter would be for the Government of Barbados to make a revised Submission, in which it may wish to focus only on the particulars referred to in the communication of 14 February 2011.”

Further, the Commission informed Barbados that “[i]t should be noted that the requirements of Annex III of the Rules of Procedure of the Commission regarding the format of the Submission and the number of copies would apply. However, given the specific nature of this matter which concerns only one single issue, the content of the revised Submission may also use, as appropriate, cross-references to material already supplied to the Commission.”

- 7 As advised in the above letter of the Commission, Barbados made its revised submission on 25 July 2011.
- 8 During its twenty-eighth session, the Commission decided that the revised submission would be considered on a priority basis, notwithstanding the queue. The Commission also decided that the previously established Subcommission composed of Messrs. Albuquerque, Astiz, Croker, Lu, Oduro, Rajan and Rosette would consider the revised submission and that Mr. Rajan would again act as Chairperson with Messrs. Oduro and Croker as Vice-Chairpersons. The Commission further decided that the Subcommission would start the consideration after the expiration of three months from the date of publication by the Secretary-General of the Executive Summary, in accordance with rule 51, paragraph 1, of the Rules of Procedure.
- 9 Pursuant to the above, the Subcommission carried out a detailed examination of the revised Submission during the resumed twenty-eighth session from 5 to 9 December 2011 and twenty-ninth session from, 26 March to 5 April 2012. During the examination of the revised Submission, the Subcommission requested and received support from DOALOS, in particular in the form of technical support by DOALOS GIS staff.
- 10 The Subcommission adopted these Recommendations for the revised Submission on 2 April 2012, and submitted them to the Commission on 2 April 2012 for consideration and approval by the Commission. Considering that the revised Submission concerns only the repositioning of the Gardiner point GP12 and the corresponding fixed point FP74 in the initial Submission, these Recommendations pertain only to: (a) the determination of sediment thickness at GP12; (b) whether the point satisfies the requirement of 1 per cent sediment thickness under article 76, paragraph 4(a)(i); and (c) the delineation of the outer limits of the continental shelf in the area of GP12. The Recommendations relating to the entitlement of Barbados to its continental shelf beyond 200 M, the determination of the foot of the slope and the application of the constraint lines are dealt with in the Recommendations for the initial Submission adopted by the Commission on 15 April 2010.
- 11 On 10 April 2012, a meeting was held, at the request of Barbados, between its delegation and the Commission, pursuant to paragraph 15 (1 bis) of annex III to the Rules of Procedure of the Commission. At that meeting, the presentation of Barbados was made by Leonard Nurse, Head of Delegation. The Delegation of Barbados also included a number of advisers.
- 12 The Commission prepared these Recommendations, which were adopted on 13 April 2012, taking into consideration the internal procedures and the methodology outlined in the following official documents of the Commission: paragraph 6 of Annex II to the Convention; the Guidelines and the Rules of Procedure.
- 13 The Commission also considered the notes verbales from the Republic of Suriname, dated 7 August 2008; the Republic of Trinidad and Tobago, dated 11 August 2008; and the Bolivarian Republic of Venezuela, dated 17 September 2008 received in relation to the initial submission of Barbados of 8 May 2008, and took note of the fact that no other notes verbales were received in relation to the revised Submission. The Commission reiterates that the present Recommendations relating to the revised Submission deal only with

the outer limits of the continental shelf beyond 200 M of Barbados in the area and shall not prejudice any bilateral delimitation issues between States.

- 14 A Summary of the Recommendations is included as Annex IV of this document in conformity with Annex III, V. 11(3) of the Rules of Procedure.
- 15 The Commission makes its Recommendations on the revised Submission recognising that the outer limits of the continental shelf beyond 200 M as established by a coastal State on the basis of its Recommendations shall be final and binding according to article 76, paragraph 8.

II. CONTENTS OF THE SUBMISSION

A. Original Submission

- 16 The revised Submission received on 25 July 2011 contained: an Executive Summary, a Main Body which is the analytical and descriptive part, cross-referenced to the Main Body of the original Submission made on 8 May 2008, and Supporting Scientific and Technical Data. A list of the material included in the revised Submission is included as Annex II to these Recommendations.

B. Communications and additional material

- 17 In the course of the examination of the Submission by the Subcommission, the Delegation of Barbados submitted additional material, including in response to questions and requests for clarification by the Subcommission. The list of additional material submitted by Barbados is included as Annex III to these Recommendations.

III. RECOMMENDATIONS

1. The establishment of the outer edge of the continental margin

- 18 The outer edge of the continental margin of Barbados should, for the purposes of the Convention, be established in accordance with article 76, paragraphs 4 and 7.

1.1 The application of the sediment thickness formula

1.1.1 Initial Submission of 8 May 2008

- 19 In its Submission of 8 May 2008, Barbados had submitted 3 Gardiner points GP11, GP12 and GP13 to the north of Barracuda Ridge based on the sediment thickness provision of article 76, paragraph 4(a)(i) that are derived from the critical FOS point 10 on the continental margin of Barbados (Figure 1 left). The locations of these Gardiner points were based on linear extrapolation of velocity functions derived from the Wavefield Inseis 2008 multichannel seismic line DM127 to calculate sediment thickness located on the 6-channel ANTIPLAC seismic survey lines 13, 36, 38, 111 and 281 respectively. Considering the large extrapolation distances involved, the Subcommission had requested for any additional data available to support the extrapolation.
- 20 Following a series of correspondence in this regard and in response to the communication of the Subcommission dated 14 August 2009, the Delegation provided additional geophysical data to corroborate the velocity model. The Subcommission examined the additional material provided by the Delegation

and agreed that the new data provides good supporting evidence for the extrapolation of the velocity model to determine the sediment thickness at the three Gardiner points GP11, GP12 and GP13.

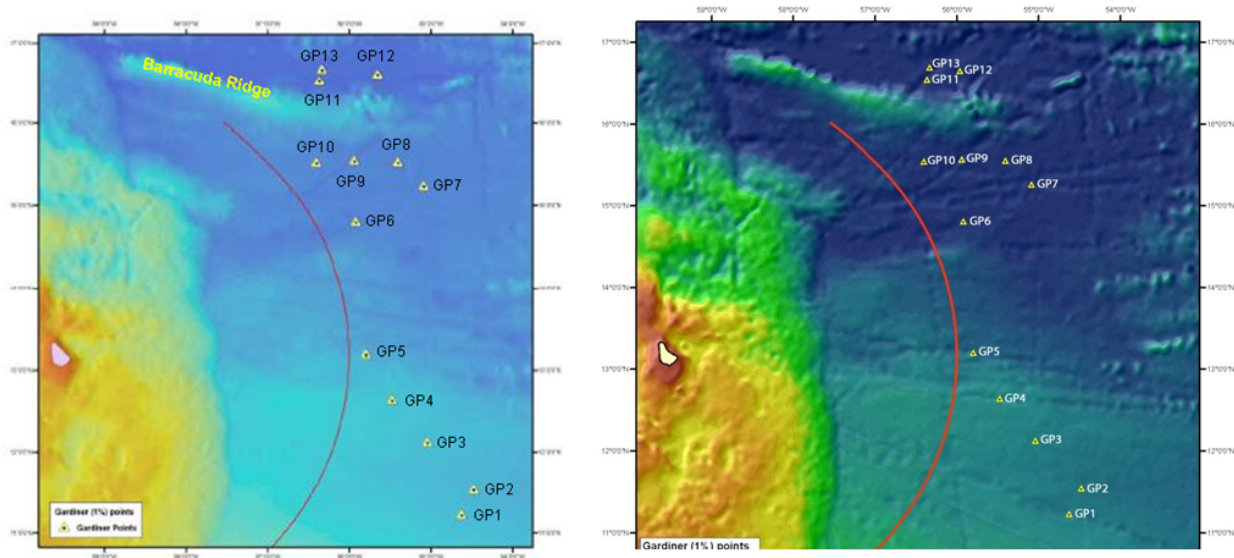


Figure 1: (left) Locations of the one per cent sediment thickness points GP1 to GP13. Source: Main Body, Initial Submission, figure 6.18(a), page 6-28. (right) Locations of the 1 per cent sediment thickness points GP1 to GP13 showing the revised location of GP12. Source: Main Body, Revised Submission, revised figure 6.18(a), page 3.

- 21 The Subcommittee calculated the sediment thickness at these three Gardiner points utilising the velocity-depth profile for sonobuoy I from the area adjacent to the Ridge, and observed that only two of the Gardiner points GP11 and GP13 fulfil the one per cent sediment thickness criterion. The Subcommittee therefore requested the Delegation to consider relocating GP12 accordingly.
- 22 In its communication of the 8 February 2010, the Delegation brought to the notice of the Subcommittee a mis-assignment of velocity-depth values to sonobuoy I and that therefore the results from sonobuoy I were not appropriate for determination of the sediment thickness. The Delegation also indicated that instead, sonobuoy C which is on the northern flank of the Barracuda Trough provides additional support for the extrapolation of the velocity model to the north of the Barracuda Ridge.
- 23 Given that the use of information from sonobuoy I in the determination of sediment thickness in the area to the north of Barracuda Ridge was no longer valid, the Subcommittee, using FOS-10 however, proceeded to calculate the sediment thickness based on the results of sonobuoy C and noted that, of the three Gardiner points GP11, GP12 and GP13, Gardiner point GP12 did not fulfil the one per cent thickness criterion. The Subcommittee also found that relocating GP12 more landward in the vicinity of CDP 4150 on ANTIPLAC line 281 would satisfy the sediment thickness criterion. This was conveyed to the Delegation in a communication of 31 March 2010.

- 24 In response, the Delegation by letter dated 1 April 2010 informed the Subcommission that it did not agree with the proposed recommendation of the Subcommission to relocate GP12.

1.1.2 Revised Submission of 25 July 2011

- 25 In its revised Submission of 25 July 2011, Barbados provided a revised location of GP12 at CDP 4207 on Antiplac line 281 (Figure 1 right). The Subcommission carried out a detailed examination of the revised location of GP12 during the resumed twenty-eighth session from 5 to 9 December 2011. The Subcommission also calculated the sediment thickness at GP12 at its revised location utilising the published velocity-depth profile for sonobuoy C and agrees that the revised point satisfies the requirement of one per cent sediment thickness under article 76, paragraph 4(a)(i).

1.2 Recommendations

- 26 The Commission recommends that the point GP12 at its revised location is used as the basis for delineating the outer limits of the continental shelf in this area.

2. The delineation of the outer limits of the continental shelf

- 27 The outer limits of the continental shelf should be based on the established outer edge of the continental margin, taking into consideration the constraints contained in article 76, paragraphs 5 and 6.

2.1 The application of constraint criteria

- 28 The outer limits of the continental shelf cannot extend beyond the constraints as per the provisions contained in article 76, paragraph 5. Accordingly, the provision that the outer limits of the continental shelf may not exceed 350 M from the baselines from which the territorial sea is measured may be applied in all cases. Alternatively, the provision that the outer limits of the continental shelf may not exceed 100 M from the 2500 m isobath may be applied to those parts of the continental margin that are classified as natural components of the margin.
- 29 For the outer limits of the continental shelf Barbados has invoked only the 350 M distance constraint. The Subcommission agrees that GP12 at its revised location meets the constraints criteria (Figure 2).

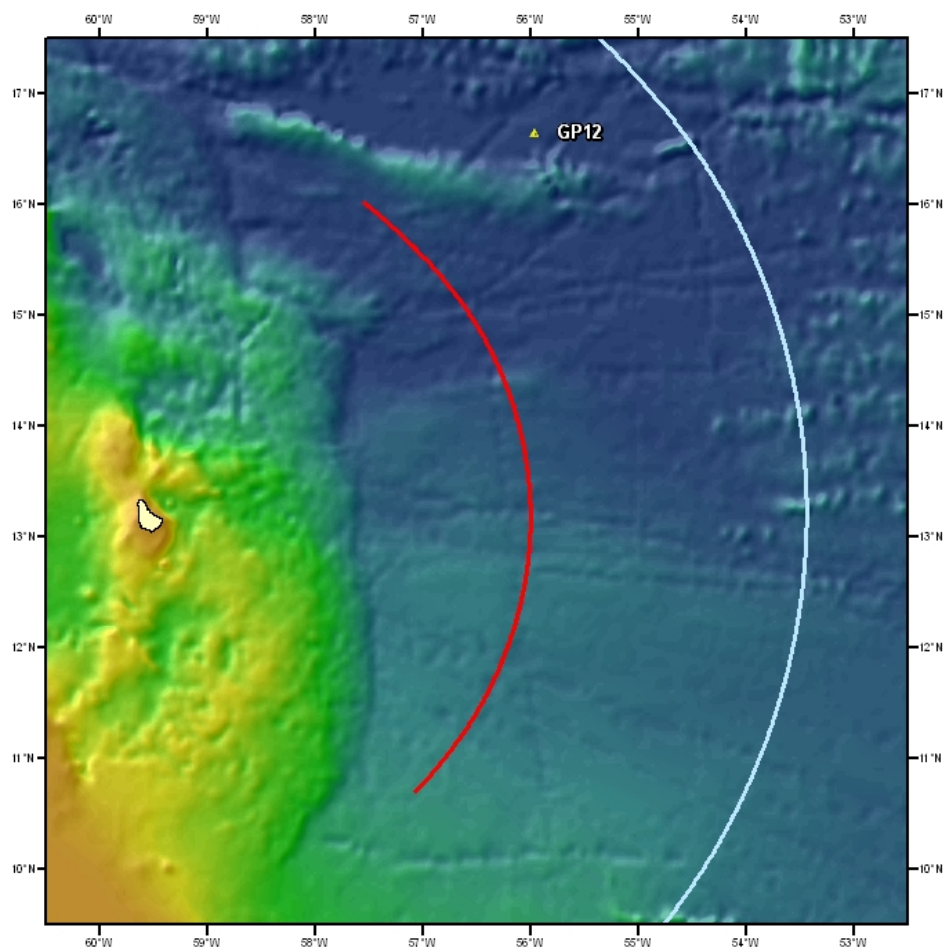


Figure 2. Location of the distance constraint (350 M) (light blue line) and 200 M limit line (red line) and revised GP12 (Figure prepared by Subcommittee from materials provided by Delegation).

2.1.1 The construction of the distance constraint line

30 The distance constraint line submitted by Barbados in its revised Submission is constructed by arcs at 350 M distance from the baselines from which the territorial sea is measured. The Subcommittee agreed with the procedure and methods applied by Barbados in the construction of this constraint line.

2.2 The outer limits of the continental shelf

31 The outer limits of the continental shelf in the revised Submission of 25 July 2011 consist of 15 fixed points (FP1 to FP15) connected by straight lines not exceeding 60 M in length (Figure 3). The fixed point FP14 corresponds to GP12 at its revised location. The Subcommittee noted however, that the Recommendations of the Commission adopted on 15 April 2010 in relation to the initial Submission of Barbados dated 8 May 2008 refers to 75 fixed points. Of these, FP6 and FP67 are fixed points connecting FP5 and FP68 respectively to the 200 M limit line, while the intervening points from FP7 to FP66 are along the 200 M limit line. In the Revised Submission however, Barbados has eliminated the intervening points FP7 to FP66 on the 200 M limit line and has

accordingly renumbered the fixed points FP67 to FP75, as FP7 to FP15. The Subcommission recognises the correlation between the fixed points in its earlier Recommendations and in the revised Submission as per the table below.

Fixed Point ID in Recommendations adopted on 15 April 2010	Fixed Point ID in revised Submission of 25 July 2011
FP1	FP1
FP2	FP2
FP3	FP3
FP4	FP4
FP5	FP5
FP6	FP6
FP67	FP7
FP68	FP8
FP69	FP9
FP70	FP10
FP71	FP11
FP72	FP12
FP73	FP13
FP74*	FP14
FP75	FP15

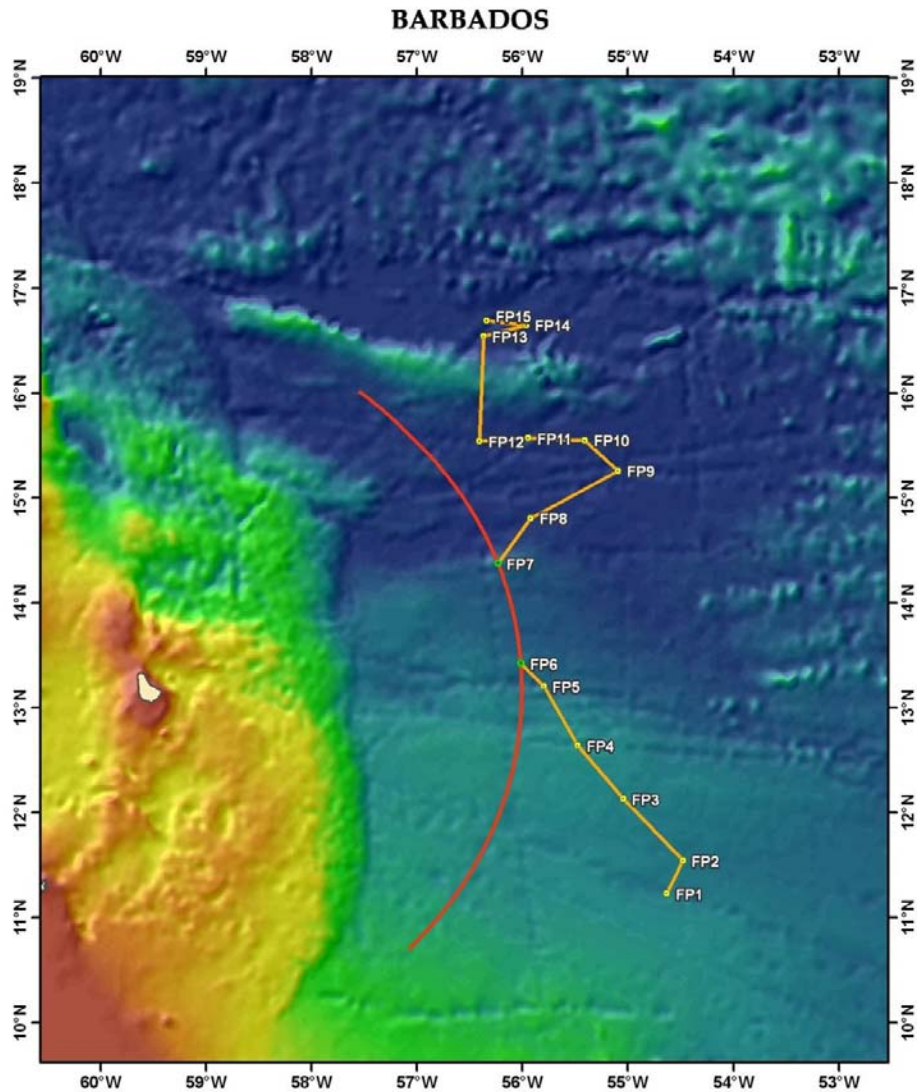
**As indicated in the Recommendations for the initial Submission adopted by the Commission on 15 April 2010, the Subcommission did not agree with the location of fixed point FP74, corresponding to Gardiner point GP12, as provided by Barbados in its initial Submission of 8 May 2008.*

- 32 In the course of its examination of the revised Submission, the Subcommission noted a discrepancy in the distances between outer limit fixed points FP13 - FP14 and FP14 - FP15 as contained in Revised Table 1 in the Revised Executive Summary. Although the distances calculated by the Subcommission are less than 60 M, the Subcommission requested the Delegation to double-check the distances supplied by it and confirm.
- 33 In response, the Delegation by a letter of 31 January 2012 concurred with the observations of the Subcommission on the discrepancies in the distances between FP13 - FP14 and FP14 - FP15 and provided an amended Revised Table 1 to the Revised Executive Summary as well as amended Tables 8.2 and 9.2 to the Revised Main Body.

2.3 Recommendations

- 34 The Commission agrees with the determination of the fixed point FP14 corresponding to GP12 at its revised location, and recalls its earlier Recommendations dated 15 April 2010 which agreed with the determination of the other fixed points FP1 to 13 and FP15 listed in Annex I, establishing the outer limit of the continental shelf from FP1 to FP15 (Figure 3).

- 35 The Commission recommends that the delineation of the outer limits of the continental shelf of Barbados be conducted in accordance with article 76, paragraph 7, by straight lines not exceeding 60 M in length, connecting fixed points, defined by coordinates of latitude and longitude. The establishment of the final outer limits of the continental shelf of Barbados may depend on delimitation between States. The Commission recommends, taking into consideration article 9 of Annex II to the Convention, that Barbados proceeds to delineate the outer limits of the continental shelf beyond 200 M on the basis of the provisions of article 76, paragraphs 7, 8, 9 and 10.



Full Outer Limit Line for the Continental Shelf of Barbados

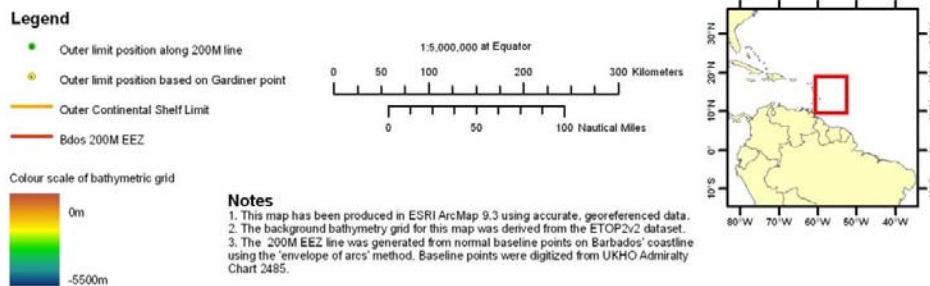


Figure 3. Map showing the fixed points FP1 to FP15 comprising the line of the outer limit of the continental shelf of Barbados beyond 200 M. Source, Executive Summary, Revised January 2012, page 4.

ANNEX I

TABLE OF COORDINATES AND OTHER INFORMATION RELATED TO THE ESTABLISHMENT OF THE OUTER EDGE OF THE CONTINENTAL MARGIN AND THE OUTER LIMIT OF THE CONTINENTAL SHELF BEYOND 200 M

Point Number	Latitude (N)	Longitude (W)	Point origin	Distance to next outer limit point (M)	Outer Limit Area	Remarks
FP1	11.23078403	54.6281660	1 % line	20.785	South	The recommendations for these fixed points which were included by Barbados in its initial Submission of 8 May 2008 were adopted by the Commission on 15 April 2010.
FP2	11.54559998	54.4778900	1 % line	48.269	South	
FP3	12.13042600	55.0440520	1 % line	39.700	South	
FP4	12.64148998	55.4763000	1 % line	38.519	South	
FP5	13.20393002	55.7978200	1 % line	18.230	South	
FP6	13.42436869	56.0133088	200 M	N/A	South	
FP7	14.37652904	56.2323277	200 M	31.476	North	
FP8	14.80800296	55.9218750	1 % line	55.291	North	
FP9	15.25911999	55.0904300	1 % line	25.234	North	
FP10	15.55023304	55.4058330	1 % line	31.067	North	
FP11	15.56913104	55.9418690	1 % line	26.875	North	
FP12	15.54371401	56.4051390	1 % line	59.656	North	
FP13	16.54152202	56.3692530	1 % line	24.281	North	
FP14	16.64739440	55.9624056	1 % line	21.747	North	Recommendation for this fixed point included in the current recommendations adopted by the Commission.
FP15	16.69210601	56.3371310	1 % line	N/A	North	The recommendation for this fixed point which was included by Barbados in its initial Submission of 8 May 2008 was adopted by the Commission on 15 April 2010.

ANNEX II

LIST OF THE MATERIAL CONTAINED IN THE REVISED SUBMISSION OF BARBADOS MADE TO THE COMMISSION ON 25 JULY 2011

1. Executive summary of the revised Submission of Barbados was submitted in 22 copies in paper format and two copies in electronic format.
2. Main Body of the revised Submission of Barbados cross-referenced to Original Main Body was submitted in eight copies in paper format and two copies in electronic format.
3. The Supporting Data of the revised Submission of Barbados was submitted with a revised seismic section and revised maps in 2 copies in paper and electronic format and a revised GIS.

ANNEX III
LIST OF ADDITIONAL MATERIAL SUBMITTED TO THE COMMISSION BY
BARBADOS

I. LIST OF ADDITIONAL MATERIAL DATED 16 AUGUST 2011

1. Amendment to executive summary of the revised Submission of Barbados submitted in 22 copies in paper format and two copies in electronic format.
2. Amendment to Main Body of the revised Submission of Barbados cross-referenced to Original Main Body submitted in eight copies in paper format and two copies in electronic format.

II. LIST OF ADDITIONAL MATERIAL DATED 31 JANUARY 2012

1. Amendment to executive summary of the revised Submission of Barbados submitted in 22 copies in paper format and two copies in electronic format.
2. Amended Tables (Distance Measurements) for Barbados' 2011 Revised submission to the CLCS, BAR-DOC-002_30-01-2012, submitted in eight copies in paper format and two copies in electronic format.

III. LIST OF ADDITIONAL MATERIAL DATED 10 APRIL 2012

1. Revised Submission by Barbados to the Commission on the Limits of the Continental Shelf with respect to Article 76 of the United Nations Convention on the Law of the Sea. Presentation to Plenary, BAR-PRE-001_10-04-2012, submitted in 22 copies in paper format and two copies in electronic format on CD BAR-DISC-001_10-04-2012.

ANNEX IV

(page left intentionally blank)



Commission on the Limits of the Continental Shelf

SUMMARY OF RECOMMENDATIONS OF THE COMMISSION ON THE LIMITS OF THE CONTINENTAL SHELF IN REGARD TO THE REVISED SUBMISSION MADE BY BARBADOS ON 25 JULY 2011¹

Recommendations prepared by the Subcommission established for the consideration of the revised Submission made by Barbados

Adopted by the Subcommission on 2 April 2012, and submitted to the Commission on the Limits of the Continental Shelf for consideration and approval by the Commission

Adopted by the Commission, with amendments, on 13 April 2012

¹ The aim of this Summary is to provide information which is not of confidential or proprietary nature in order to facilitate the function of the Secretary-General in accordance with Rule 11.3 of Annex III to the Rules of Procedure of the Commission (CLCS/40/Rev.1). This Summary is based on excerpts of the Recommendations and may refer to material not necessarily included either in the full Recommendations or this Summary.

(page left intentionally blank)

I. INTRODUCTION

- 1 On 25 July 2011, Barbados submitted a revised Submission to the Commission on the Limits of the Continental Shelf through the Secretary-General of the United Nations, information on the limits of the continental shelf beyond 200 nautical miles from the baselines from which the breadth of the territorial sea is measured, in accordance with Article 76, paragraph 8 of the United Nations Convention on the Law of the Sea of 10 December 1982. This revised Submission was made pursuant to an exchange of correspondence between the Government of Barbados and the Commission subsequent to the Recommendations of the Commission in regard to an initial Submission made by Barbados on 8 May 2008.
- 2 Considering that the revised Submission concerns only the repositioning of the Gardiner point 12 (GP12) and the corresponding fixed point FP74 in the initial Submission made by Barbados on 8 May 2008, these Recommendations pertain only to: (a) the determination of sediment thickness at GP12;(b) whether the point satisfies the requirement of 1 per cent sediment thickness under article 76, paragraph 4(a)(i); and (c) the delineation of the outer limits of the continental shelf in the area of GP12. The Recommendations relating to the entitlement of Barbados to its continental shelf beyond 200 M, the determination of the foot of the slope and the application of the constraint lines are dealt with in the Recommendations for the initial Submission adopted by the Commission on 15 April 2010.

II. NOTES VERBALES SUBMITTED BY OTHER STATES

- 3 The Commission considered the notes verbales from the Republic of Suriname, dated 7 August 2008; the Republic of Trinidad and Tobago, dated 11 August 2008; and the Bolivarian Republic of Venezuela, dated 17 September 2008 received in relation to the initial submission of Barbados of 8 May 2008, and took note of the fact that no other notes verbales were received in relation to the revised Submission. The Commission reiterates that the present Recommendations relating to the revised Submission deal only with the outer limits of the continental shelf beyond 200 M of Barbados in the area and shall not prejudice any bilateral delimitation issues between States.

III. THE APPLICATION OF THE SEDIMENT THICKNESS FORMULA

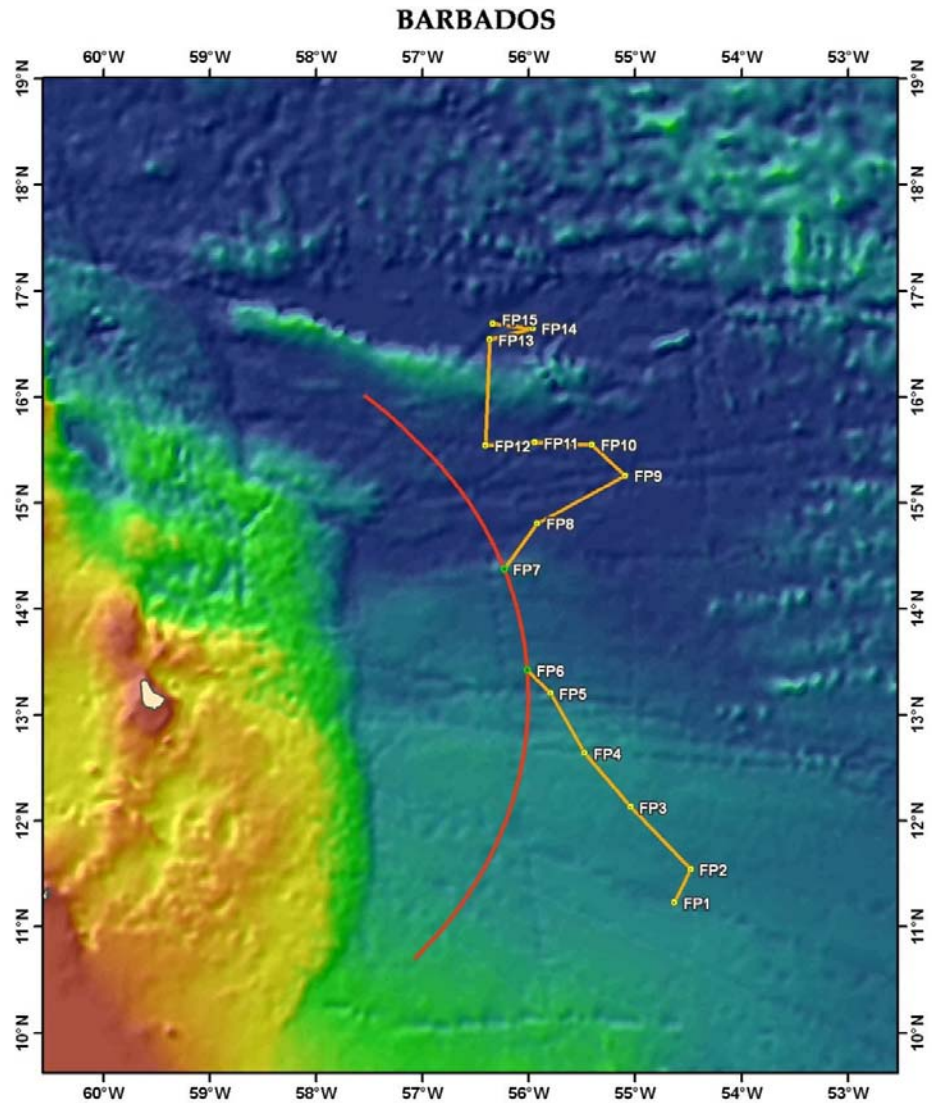
- 4 The outer edge of the continental margin of Barbados beyond 200 M is based on sediment thickness points established from the foot of the continental slope by applying the provisions of article 76, paragraph 4(a)(i).
- 5 In its revised Submission of 25 July 2011, Barbados provided a revised location of GP12. Based on its consideration of the technical and scientific data contained in the revised Submission, the Subcommission is in agreement with the methodology adopted by Barbados for the determination of the sediment thickness at GP12 at its revised location. The Subcommission also agrees that the revised point GP12 satisfies the requirement of one per cent sediment thickness under article 76, paragraph 4(a)(i). The Commission recommends that this point is used as the basis for delineating the outer limits of the continental shelf in this area.

IV. THE APPLICATION OF THE CONSTRAINT CRITERIA

- 6 For the outer limits of the continental shelf Barbados has invoked only the 350 M distance constraint. The Subcommission agrees that GP12 at its revised location meets the constraints criteria.

V. OUTER LIMITS OF THE CONTINENTAL SHELF

- 7 The outer limits of the continental shelf in the revised Submission of 25 July 2011 consist of 15 fixed points (FP1 to FP15) connected by straight lines not exceeding 60 M in length (Figure 1). The fixed point FP14 corresponds to GP12 at its revised location. The Subcommission noted that the Recommendations of the Commission adopted on 15 April 2010 in relation to the initial Submission of Barbados dated 8 May 2008 however, refers to 75 fixed points. Of these, FP6 and FP67 are fixed points connecting FP5 and FP68 respectively to the 200 M limit line, while the intervening points from FP7 to FP66 are along the 200 M limit line. In the Revised Submission however, Barbados has eliminated the intervening points FP7 to FP66 on the 200 M limit line and has renumbered the fixed points FP67 to FP75 accordingly, from FP7 to FP15.
- 8 The Commission agrees with the determination of the fixed point FP14 corresponding to GP12 as well as the other fixed points FP1 to 13 and FP15 listed in Annex I, establishing the outer limit of the continental shelf from FP1 to FP15 (Figure 1).
- 9 The Commission recommends that the delineation of the outer limits of the continental shelf of Barbados be conducted in accordance with article 76, paragraph 7, by straight lines not exceeding 60 M in length, connecting fixed points, defined by coordinates of latitude and longitude. The establishment of the final outer limits of the continental shelf of Barbados may depend on delimitation between States. The Commission recommends, taking into consideration article 9 of Annex II to the Convention, that Barbados proceeds to delineate the outer limits of the continental shelf beyond 200 M on the basis of the provisions of article 76, paragraphs 7, 8, 9 and 10.

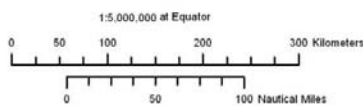
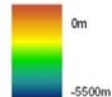


Full Outer Limit Line for the Continental Shelf of Barbados

Legend

- Outer limit position along 200M line
- Outer limit position based on Gardiner point
- Outer Continental Shelf Limit
- Bdos 200M EEZ

Colour scale of bathymetric grid



Notes

1. This map has been produced in ESRI ArcMap 9.3 using accurate, georeferenced data.
2. The background bathymetry grid for this map was derived from the ETOPO2v2 dataset.
3. The 200M EEZ line was generated from normal baseline points on Barbados' coastline using the 'envelope of arcs' method. Baseline points were digitized from UKHO Admiralty Chart 2485.

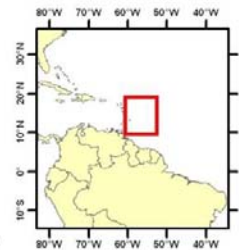


Figure 1. Map showing the fixed points FP1 to FP15 comprising the line of the outer limit of the continental shelf of Barbados beyond 200 M. Source, Executive Summary, Revised January 2012, page 4.

ANNEX I

TABLE OF COORDINATES AND OTHER INFORMATION RELATED TO THE ESTABLISHMENT OF THE OUTER EDGE OF THE CONTINENTAL MARGIN AND THE OUTER LIMIT OF THE CONTINENTAL SHELF BEYOND 200 M

Point Number	Latitude (N)	Longitude (W)	Point origin	Distance to next outer limit point (M)	Outer Limit Area	Remarks
FP1	11.23078403	54.6281660	1 % line	20.785	South	The recommendations for these fixed points which were included by Barbados in its initial Submission of 8 May 2008 were adopted by the Commission on 15 April 2010.
FP2	11.54559998	54.4778900	1 % line	48.269	South	
FP3	12.13042600	55.0440520	1 % line	39.700	South	
FP4	12.64148998	55.4763000	1 % line	38.519	South	
FP5	13.20393002	55.7978200	1 % line	18.230	South	
FP6	13.42436869	56.0133088	200 M	N/A	South	
FP7	14.37652904	56.2323277	200 M	31.476	North	
FP8	14.80800296	55.9218750	1 % line	55.291	North	
FP9	15.25911999	55.0904300	1 % line	25.234	North	
FP10	15.55023304	55.4058330	1 % line	31.067	North	
FP11	15.56913104	55.9418690	1 % line	26.875	North	
FP12	15.54371401	56.4051390	1 % line	59.656	North	
FP13	16.54152202	56.3692530	1 % line	24.281	North	
FP14	16.64739440	55.9624056	1 % line	21.747	North	Recommendation for this fixed point included in the current recommendations adopted by the Commission.
FP15	16.69210601	56.3371310	1 % line	N/A	North	The recommendation for this fixed point which was included by Barbados in its initial Submission of 8 May 2008 was adopted by the Commission on 15 April 2010.