



CONTINENTAL SHELF
NATIONAL COMMITTEE
CHILE

Partial Submission of Chile to the Commission
on the Limits of the Continental Shelf

Western Continental Shelf
of the Chilean Antarctic Territory

EXECUTIVE SUMMARY



CONTINENTAL SHELF
NATIONAL COMMITTEE
CHILE



CREDITS

Continental Shelf National Committee

1. National Department of State Borders and Boundaries (DIFROL)
2. Ministry of Foreign Affairs of Chile
3. General Staff of the Navy
4. Ministry of Defense - Undersecretary of the Armed Forces
5. Chilean Antarctic Institute
6. Chilean Navy Hydrographic and Oceanographic Service
7. National Geology and Mining Service
8. Empresa Nacional del Petróleo (ENAP)
9. Continental Shelf Group (DIFROL)
10. Technical Advisory Group

Photographs: DIFROL

© Government of Chile 2022

Table of Contents

1. Introduction	5
2. Maps and coordinates	8
3. Commission members who provided advice	9
4. Provisions of Article 76 invoked in support of this Partial Submission.....	9
5. General description of the Western Continental Margin of the Chilean Antarctic Territory	10
6. Delineation of the Western Continental Shelf of the Chilean Antarctic Territory	13
7. Disputes.....	15
APPENDIX I: Coordinates and information on the Outer Limits of the Continental Shelf.....	17





1. Introduction

Chile is a State Party to the United Nations Convention on the Law of the Sea (hereinafter, “the Convention”), which, in accordance with Article 308(2), entered into force for Chile on 24 September 1997, 30 days after the deposit of its ratification instrument of the Convention to the United Nations Secretary-General.

As stated in Article 4 of Annex II to the Convention, a State that intends to establish the outer limits of its continental shelf beyond 200 nautical miles shall submit particulars of such limits to the Commission on the Limits of the Continental Shelf (hereinafter, “the Commission”), along with supporting scientific and technical data, within 10 years of the entry into force of the Convention for the relevant submitting coastal State.

At the eleventh Meeting of States Parties to the Convention, the States Parties adopted SPLOS/72 to the effect that the 10-year time period referred to in Article 4 of Annex II to the Convention shall be taken to have commenced on 13 May 1999 in the case of a State Party for which the Convention entered into force before 13 May 1999.

Noting the continuous challenges for States to fulfill the requirements in Article 4 of Annex II to the Convention, as well as the decision contained in SPLOS/72, paragraph (a), the States Parties adopted decision SPLOS/183 during the eighteenth Meeting of States Parties. The States Parties hereby agreed that the time period referred to in Article 4 of Annex II to the Convention, and decision SPLOS/72, paragraph (a), may be satisfied by submitting preliminary information indicative of the outer limits of the continental shelf and a description of the status of the preparation and intended date of making a submission to the United Nations Secretary-General.

In accordance with the decision contained in SPLOS/183, on 8 May 2009, Chile submitted preliminary information indicative of the outer limits of its continental shelf and a description of the status of preparation and intended date of making a submission to the Commission. Consistent with Article 1(c) of SPLOS/183, the submission of preliminary information indicative of the outer limits of the continental shelf of Chile was undertaken without prejudice to this Partial Submission or future partial submissions of Chile.

The Western Continental Shelf of the Chilean Antarctic Territory submission is the second partial submission of Chile. This Partial Submission will be followed by further partial submissions. The collection and processing of supporting data regarding the remaining submission areas are in process and, in accordance with Article 4 of Annex II and the decisions contained in SPLOS/72 and SPLOS/183, these data will be submitted to the Commission in due course.

Chile reserves its rights with regard to the Eastern Continental Shelf of the Chilean Antarctic Territory, which will be determined in a future partial submission.

As recognized in Article 77 of the Convention, the rights of the coastal State over the continental shelf exist *ipso facto* and *ab initio*; they do not depend on occupation, effective or notional, or on any express proclamation.

Nevertheless, Chile's proclamation of its sovereign rights over the continental shelf adjacent to its respective coastlines dates back to 1947. By Presidential Declaration of 23 June 1947, Chile proclaimed sovereign rights over the continental shelf and waters adjacent to its insular and continental coasts, as well as control over all natural resources contained therein. As concerns the continental shelf, Chile's proclamation followed the Truman Proclamation of 28 September 1945, which marks the starting point for the establishment of a rule of customary law, according to which coastal States are vested with inherent rights to the continental shelf adjacent to their coastlines, subsequently codified in Article 2 of the 1958 Geneva Convention on the Continental Shelf.

At the 1952 Santiago Conference, on 18 August, Chile, Ecuador, and Peru concluded the Declaration on the Maritime Zone (Santiago Declaration), claiming exclusive sovereignty and jurisdiction over the sea along the coasts of their respective countries to a minimum distance of 200 nautical miles from these coasts and making it explicit in Article III that

this exclusive sovereignty and jurisdiction extended to "the seabed and the subsoil thereof".

Therefore, Chile has proclaimed its exclusive sovereignty and jurisdiction over the sea, seabed, and subsoil adjacent to both its insular and continental territories before the negotiations of the 1958 Geneva Convention on the Continental Shelf and before the commencement of the Third United Nations Conference on the Law of the Sea. Subsequently, Chile has exercised its rights and jurisdiction over the maritime spaces in accordance with customary international law and the provisions of the Convention.

The Chilean Antarctic Territory corresponds to a portion of Chile's sovereign territory located in the Antarctic Continent, by virtue of longstanding title to territory, of a legal, political, historical, geographical, diplomatic and administrative nature. The Chilean Antarctic Territory consists of all the lands, islands, islets, reefs, glaciers (pack-ice), and other features, both known and yet to be known, that exist within the limits of the ice cap constituted by meridians 53° W and 90° W, as established under Supreme Decree N° 1747, of 1940, of the Ministry of Foreign Affairs. In accordance with the international law of the sea, Chile has coastal State rights over the maritime zones appurtenant to the Chilean Antarctic Territory. The recent enacted Law N° 21255 of 17 September of 2020 reaffirms the territorial limits of the Chilean Antarctic Territory and states that the ice barriers, the territorial sea, the contiguous zone, the exclusive economic zone, the continental shelf, the continental shelf beyond 200 nautical miles, and all maritime spaces recognized by international law are part of the Chilean Antarctic Territory.

By Decree-Law N° 3773, enacted on 11 July 1961, Chile created the Department of Magallanes, comprising, among other municipalities, the Municipality of Antarctica, organized administratively within the Province of Magallanes. In 1975, by Decree-Law N° 1230, the Chilean Antarctic Province was created, becoming one of the four provinces that are part of the Magallanes and Chilean Antarctic Region.

Chile is an original signatory of the 1959 Antarctic Treaty, which entered into force on 23 June 1961. In this context, Chile recalls the principles and objectives shared by the Antarctic Treaty and the Convention, and the importance of the Antarctic system and the Convention working in harmony and thereby ensuring continuing peaceful cooperation, security, and stability in the Antarctic area.



2. Maps and coordinates

This Partial Submission deals with the outer limits of the Western Continental Shelf of the Chilean Antarctic Territory.

The data and information contained in this Partial Submission enable the establishment of the outer limits of the Western Continental Shelf of the Chilean Antarctic Territory, where those limits extend beyond 200 nautical miles from the baselines from which the breadth of the territorial sea is measured.

Two maps are included in this Executive Summary. The first map (Figure 1) gives an overview of the relevant area, including the key geographic names and main geological features. The second map (Figure 2) shows the outer limits of the Western Continental Shelf of the Chilean Antarctic Territory.

Geographic coordinates shown in tables and maps are defined using the World Geodetic System 1984.

Appendix I contains the coordinates used to define the outer limits of the continental shelf beyond 200 nautical miles, the distance between adjacent points in nautical miles, and the provision of Article 76 of the Convention on which each point is based.



3. Commission members who provided advice

In accordance with Rule 45(b) of the Rules of Procedure of the Commission (CLCS/40/Rev.1), Chile informs that Mr. Gonzalo Yáñez Carrizo, member of the Commission (2017 - present), has assisted Chile in the preparation of this Partial Submission.

4. Provisions of Article 76 invoked in support of this Partial Submission

Chile invokes the provisions of paragraphs 1, 3, 4, 5, and 7 of Article 76 of the Convention in support of the establishment of the outer limits of the Western Continental Shelf of the Chilean Antarctic Territory.

A total of 14 foot of the continental slope points (10 in the Bellingshausen Sea region and 4 in the Shackleton Fracture Zone region) contributing to the establishment of the outer edge of the Western Continental Margin of the Chilean Antarctic Territory have been determined, in accordance with the general rule contained in Article 76(4)(b) of the Convention.

The fixed points constituting the outer edge of the Western Continental Margin of the Chilean Antarctic Territory have been determined in accordance with the Gardiner formula and the Hedberg formula contained in Article 76(4)(a)(i) and 76(4)(a)(ii) of the Convention, respectively.

5. General description of the Western Continental Margin of the Chilean Antarctic Territory

The Chilean Antarctic Territory lies over a significant portion of what is known today as West Antarctica, the region of the south pole continent that has experienced the more continuous, long-lived, and diverse history of tectonic activity on record, dating back to early Cambrian times up to the Present day. The majority of the Chilean Antarctic Territory encloses two main provinces of West Antarctica, named the Antarctic Peninsula or O'Higgins Land, and the Weddell Sea Rift System (Figure 1). Beyond those provinces, at its southern tip between the parallel 85°S and the South Pole, the Chilean territory extends to the East Antarctica Precambrian craton as well. During the last ~500 Ma, this region has been affected by plate convergence/subduction, arc magmatism, passive margin development, and both oceanic and continental rifting. That has resulted in a complex amalgamation of crustal blocks of disparate origins, as evidenced by the limited rock exposure interrupting the West Antarctic ice sheet. Specifically, this Partial Submission is focused on the Western Continental Margin of the Chilean Antarctic Territory. Distinguished by its rugged basement relief, a length of about 1500 km and more than 600 km of width at its wider, southern end, the Peninsula is perhaps Antarctica's most prominent and recognizable physiographic feature at a continental scale (Figure 1). Besides the Transantarctic Mountains in East Antarctica and the Ellsworth-Whitmore Mountains in the continental parts of the Weddell Sea region, the Antarctic Peninsula showcases one of the continent's highest relief and best rock exposure, facilitated by the

southwardly progressing melting of the Antarctic ice sheet cover. The northern tip of the Peninsula, which includes the South Shetland Islands archipelago, mimics the southern termination of South America over the Cordillera Darwin and Cabo de Hornos archipelago in Tierra del Fuego, both displaying a pointed, falcate end, curved to the east, as if they were a specular reflection of each other across the Drake Passage (Figure 1). In fact, both major geographic features were connected in the geologic past forming, along its western side, a continuous subduction margin with the proto-Pacific ocean, dating back to Gondwana and Pangea supercontinents ages, up to the time of the opening of the Drake Passage, at about 60 Ma BP, which bridges the Pacific, South Atlantic (Scotia) and Southern oceans. Since then, as shown by plate tectonic reconstruction models, the continuous action along the left-lateral Shackleton Fracture Zone has contributed to the separation of the South American continent, including the continental part of the Scotia plate, from Antarctica, leading to the current location and tectonic arrangement of Tierra del Fuego and the Antarctic Peninsula (Figure 1).

The Shackleton Fracture Zone is a major plate boundary transform fault limiting the Antarctic and Scotia plates (Figure 1). Because of its intricate tectonic setting and proximity to major tectonic and plate boundary intersections, this transform fault has accommodated a significant component of shortening orthogonal to the structure, leading to the construction of a rugged, high-relief ridge



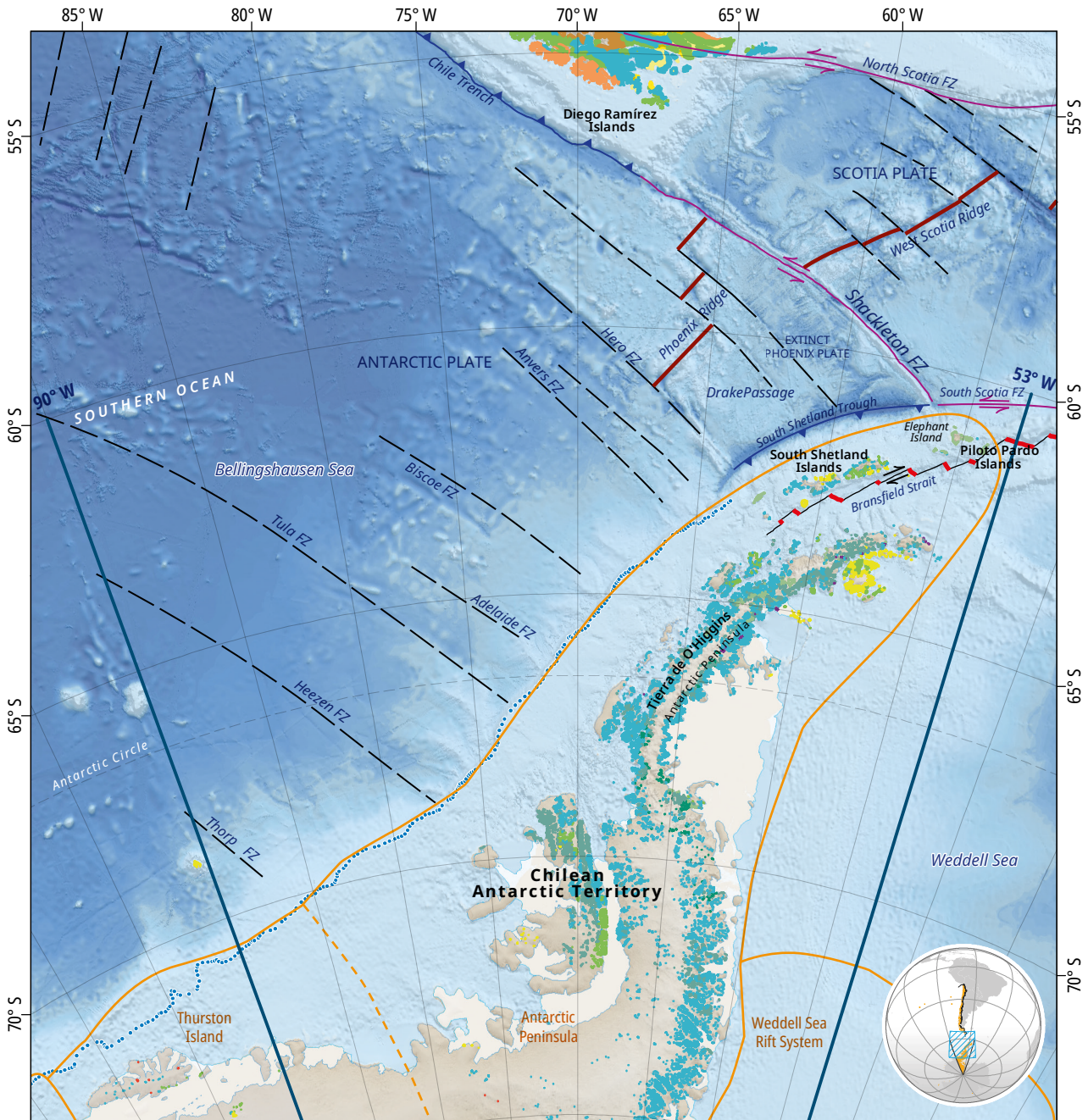
interrupting the deep ocean floor along the fracture. This submarine high is morphologically continuous along its approximately 800 km long trend, with some of the highest peaks exceeding the 4 000 m of altitude above the seabed. On both of its ends, it connects the continental shelves of the Diego Ramírez Islands in the Cabo de Hornos archipelago, southern Tierra del Fuego, and the Piloto Pardo Islands and South Shetland archipelago, in the northeastern end of the Antarctic Peninsula (Figure 1). Cretaceous ophiolitic complexes and metamorphic rocks of *melange* facies, found at both Diego Ramírez and the Piloto Pardo Islands and others of the South Shetland archipelago are contemporaneous in age and of geologic and petrologic affinity, consistent with a common past collocated along the paleo subduction margin on the western side of both continents. Northwest of the Diego Ramírez Islands, the Shackleton Fracture Zone merges into the subduction margin of Antarctica under the Scotia and South American plates. The southeastern tip of the fault is located near the Elephant Island (part of the Piloto Pardo Islands), at the triple junction between the South Scotia Fracture Zone and the extinguishing South Shetland intraplate subduction trench.

Moving south from the intersection of the Hero fracture zone with the Antarctic Peninsula continent, a continental passive margin has been developed offshore the land mass of the O'Higgins Land into the Bellingshausen Sea (Figure 1). This

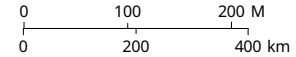
passive margin, which currently represents the limit between the oceanic and continental portions of the Antarctic plate, is different in origin relative to the classic model of continental break-up and ocean basin formation along mid-ocean ridges, the so-called rifted margin. In this case, the continental margin has been formed thanks to the northward migration of the Phoenix-Antarctica triple junction along the extinguishing subduction zone, leading to the abandonment of the trench and subsequent continental sediment fill up of the western side of the Antarctic Peninsula. Nonetheless, sedimentary processes of continental source, strongly modulated by the action of the ice, have shaped this margin in the same manner as the classic geomorphic model of a passive margin profile, subdivided into shelf, slope, and rise. Offshore incursions of kilometer-scale megafans, with slump deposits limited by gravitational, detachment normal faults, mark the transition between the lower continental slope and the continental rise, the latter a gently angled wedge, mostly characterized by sediment deposition of layered detritic sediments, transported by turbidity currents at their terminal facies. This sedimentary ridges or drifts have been formed by submarine mass wasting slope processes, exacerbated by the high continental sediment outwash produced by the glacial erosion, channelized across the shelf to be later deposited as fans at the base of the slope, and locally reworked and reshaped by sea bottom currents.



GEOLOGICAL AND TECTONIC SETTING CHILEAN ANTARCTIC TERRITORY



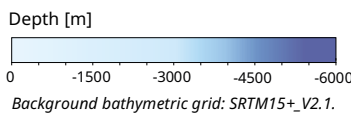
Projection: Polar Stereographic South / Datum: WGS 1984
Central Meridian: 70° W / Standard Parallel: 65° S



Legend

- Subduction zone boundary
- Oceanic transform fault boundary
- Extinct spreading center
- Active spreading center
- Ridge-connecting transform
- Marine fracture zones
- Continental shelf break

- West Antarctica tectonic provinces (Jordan *et al.*, 2020)
- West Antarctica tectonic sub-provinces (Jordan *et al.*, 2020)
- Ice shelf



BEDROCK GEOLOGY

ERA	PERIOD
Cenozoic	Quaternary
	Neogene
	Paleogene
Mesozoic	Cretaceous
	Jurassic
	Triassic
Paleozoic	Permian
	Carboniferous
	Devonian
	Ordovician

Figure 1. Map of the region related to the Partial Submission of the Western Continental Shelf of the Chilean Antarctic Territory. The figure shows the satellite bathymetry and major regional morphological and geological features^{1,2,3}.



6. Delineation of the Western Continental Shelf of the Chilean Antarctic Territory

The outer edge of the Western Continental Margin of the Chilean Antarctic Territory extends beyond the 200 nautical miles distance line. Consequently, Chile submits this Partial Submission pursuant to Article 76(8) of the Convention, read in conjunction with Article 4 of Annex II to the Convention.

Morphological and bathymetric data, in conjunction with relevant geological and geophysical data, underlying this Partial Submission demonstrate, consistent with Article 76(3) and Article 76(4)(b) of the Convention as reflected in Chapter 5 of the Scientific & Technical Guidelines of the Commission (CLCS/11), that the continental margin is morphologically continuous with the land mass of which it constitutes the submerged prolongation. Accordingly, the base of the continental slope region is identified within which all the foot of the continental slope points are determined.

The information and data that were hitherto collected and processed unequivocally allow the establishment of the outer edge of the continental margin, determined in accordance with Article 76(4)(a)(i) and 76(4)(a)(ii) of the Convention,

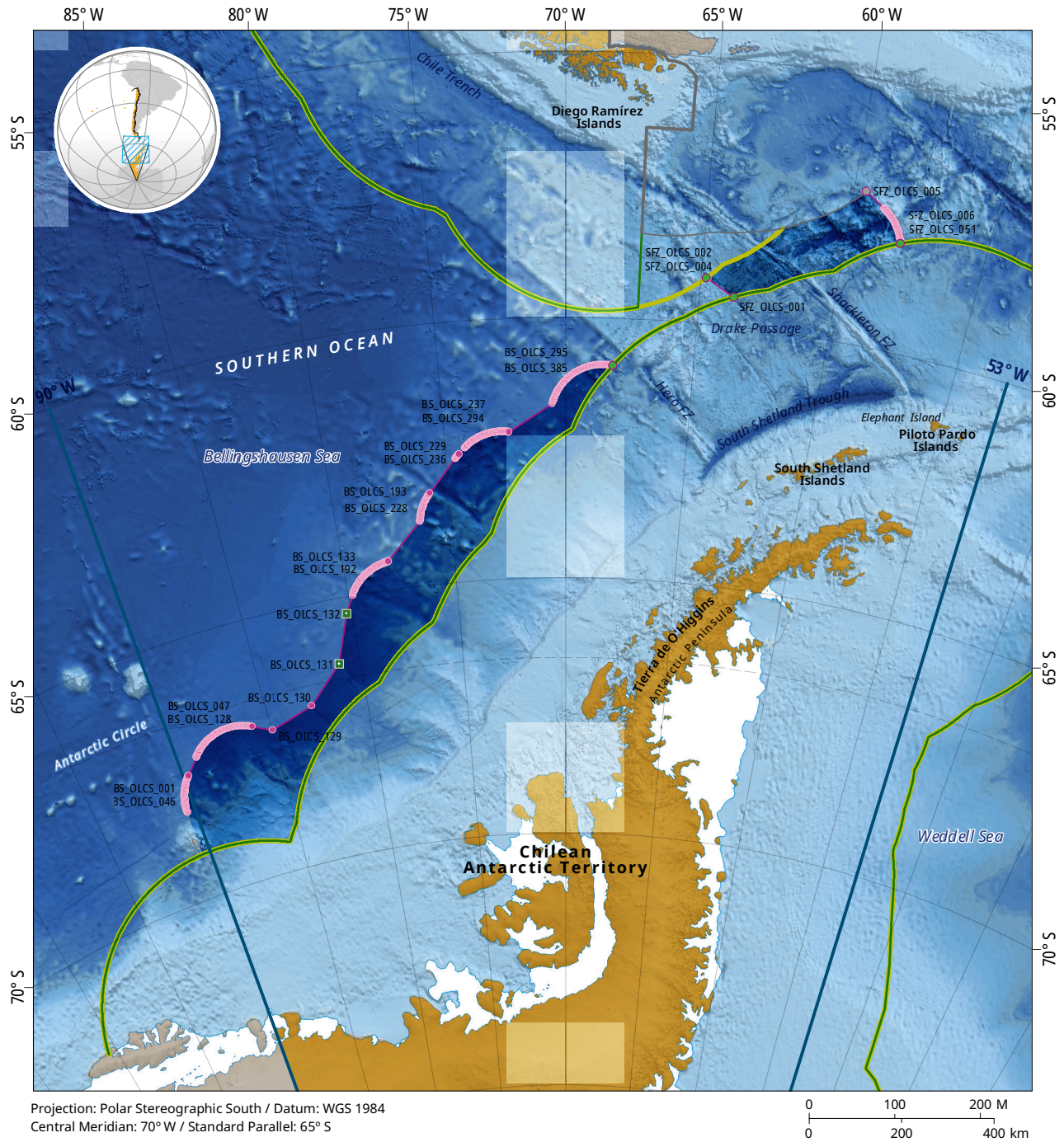
to a point which is located 326 nautical miles and 267 nautical miles from the baselines from which the breadth of the territorial sea is measured in the region of the Bellingshausen Sea and in the region of the Shackleton Fracture Zone, respectively.

Chile may use either of the two enumerated constraints provided in Article 76(5) of the Convention.

In this Partial Submission, Chile only invokes the distance constraint contained in Article 76(5) of the Convention. The distance constraint lies entirely seaward of the outer edge of the continental margin, and consequently, the outer limits of the continental shelf can be delineated based on the outer edge of the continental margin.

Consistent with Article 76(7) of the Convention, the outer limits of the Western Continental Shelf of the Chilean Antarctic Territory are delineated by straight lines not exceeding 60 nautical miles in length, connecting fixed points defined by coordinates of latitude and longitude (Figure 2).

THE OUTER LIMITS OF THE WESTERN CONTINENTAL SHELF OF THE CHILEAN ANTARCTIC TERRITORY



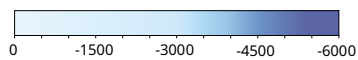
Legend

- International boundary Chile - Argentina
- Chilean EEZ
- Chilean continental shelf 200 M
- Argentinean EEZ and continental shelf 200 M
- Art. 76(7): outer limits of the continental shelf beyond 200 M straight lines

Fixed points comprising the line of the outer limits of the continental shelf beyond 200 M

- Art. 76(4)(a)(i): 1% sediment thickness
- Art. 76(4)(a)(ii): FOS + 60 M
- Intersection: 200 M Chile, Art. 76(4)(a)(ii): FOS + 60 M
- Intersection: 200 M Argentina, Art. 76(4)(a)(ii): FOS + 60 M

Depth [m]



Background bathymetric grid: SRTM15+ V2.1.

"Authorized for distribution by Resolution No.138 of December 22, 2021, of the National Department of State Borders and Boundaries. The publication and circulation of maps, geographic charts, or other printed material and documents that refer or relate to the boundaries and borders of Chile do not in any way involve or commit the State of Chile, in accordance with Article 2°, letter g) of Decree Law No. 83 of 1979 of the Ministry of Foreign Affairs".

Figure 2. Map showing the outer limits of the Western Continental Shelf of the Chilean Antarctic Territory.

7. Disputes

Chile is an original signatory of the 1959 Antarctic Treaty. The Antarctic Treaty was signed on 1 December 1959 and entered into force on 23 June 1961. Chile exercises its territorial sovereignty over the Chilean Antarctic Territory in accordance with the provisions of the 1959 Antarctic Treaty. In particular, Article IV of the Antarctic Treaty provides that:

1. Nothing contained in the present Treaty shall be interpreted as:

(a) a renunciation by any Contracting Party of previously asserted rights of or claims to territorial sovereignty in Antarctica;

(b) a renunciation or diminution by any Contracting Party of any basis of claim to territorial sovereignty in Antarctica which it may have whether as a result of its activities or those of its nationals in Antarctica, or otherwise;

(c) prejudicing the position of any Contracting Party as regards its recognition or non-recognition of any other State's right of or claim or basis of claim to territorial sovereignty in Antarctica.

2. No acts or activities taking place while the present Treaty is in force shall constitute a basis for asserting, supporting or denying a claim to territorial sovereignty in Antarctica or create any rights of sovereignty in Antarctica. No new claim, or enlargement of an existing claim, to territorial sovereignty in Antarctica shall be asserted while the present Treaty is in force.

The Chilean Antarctic Territory overlaps partially with the Antarctic territorial claims of Argentina and of the United Kingdom of Great Britain and Northern Ireland.

In 2004, the seven States that assert rights of or claims to territorial sovereignty in Antarctica, Argentina, Australia, Chile, France, New Zealand, Norway and the United Kingdom, agreed that, while it is open to them to submit information to the Commission with regard to the outer limits of the continental shelf appurtenant to Antarctica, therefore, in accordance with paragraph 5(a) of

Annex I of the Rules of Procedure of the Commission (CLCS/40/Rev.1), they will request the Commission not to take action for the time being with regard to the information contained in the respective submissions.

In this context, Chile recalls the principles and objectives shared by the Antarctic Treaty and the Convention, and the importance of the Antarctic system and the Convention working in harmony and thereby ensuring the continuing peaceful cooperation, security and stability in the Antarctic area.

Chile notes also the relevant provisions of the Convention, including its Article 77, which provides *inter alia* that the rights of the coastal State over the continental shelf do not depend on any express proclamation, and recalls the decisions of Meetings of the States Parties to the Convention and the Rules of the Commission (CLCS/40/Rev.1).

Chile has regard to the circumstances of the area south of 60 degrees South latitude and the special legal and political status of Antarctica under the provisions of the Antarctic Treaty, including its Article IV, and notes that appurtenant to Antarctica there exist areas of continental shelf the extent of which has yet to be defined. It is open to the States that assert rights of or claims to territorial sovereignty in Antarctica, to submit information to the Commission which would not be examined by it for the time being, or to make a partial submission not including such areas of continental shelf, for which a submission may be made later, notwithstanding the provisions regarding the ten year period established by Article 4 of Annex II to the Convention and the subsequent decision on its application taken by the Eleventh Meeting of States Parties to the Convention.

Consistent with the first option, Chile reiterates that it requests the Commission not to take any action for the time being with regard to the information in this Partial Submission that relates to the continental shelf appurtenant to the Chilean Antarctic Territory.





APPENDIX I

Coordinates and information on the
Outer Limits of the Continental Shelf

Table 1. List of coordinates and the Article 76 provision invoked in the establishment of each fixed point describing the outer limits of the Western Continental Shelf of the Chilean Antarctic Territory.

Fixed point outer limit continental shelf	Longitude [decimal degrees]	Latitude [decimal degrees]	Distance to next point [M]	Article 76 provision invoked
BS_OLCS_001	-90.427975	-68.260348	1.000	Art. 76(4)(a)(ii): FOS + 60 M
BS_OLCS_002	-90.427332	-68.243746	1.000	Art. 76(4)(a)(ii): FOS + 60 M
BS_OLCS_003	-90.425946	-68.227149	1.000	Art. 76(4)(a)(ii): FOS + 60 M
BS_OLCS_004	-90.423817	-68.210564	1.000	Art. 76(4)(a)(ii): FOS + 60 M
BS_OLCS_005	-90.420948	-68.193994	1.000	Art. 76(4)(a)(ii): FOS + 60 M
BS_OLCS_006	-90.417342	-68.177444	1.000	Art. 76(4)(a)(ii): FOS + 60 M
BS_OLCS_007	-90.413000	-68.160919	1.000	Art. 76(4)(a)(ii): FOS + 60 M
BS_OLCS_008	-90.407927	-68.144423	1.000	Art. 76(4)(a)(ii): FOS + 60 M
BS_OLCS_009	-90.402124	-68.127960	1.000	Art. 76(4)(a)(ii): FOS + 60 M
BS_OLCS_010	-90.395595	-68.111535	1.000	Art. 76(4)(a)(ii): FOS + 60 M
BS_OLCS_011	-90.388343	-68.095153	1.000	Art. 76(4)(a)(ii): FOS + 60 M
BS_OLCS_012	-90.380372	-68.078818	1.000	Art. 76(4)(a)(ii): FOS + 60 M
BS_OLCS_013	-90.371686	-68.062534	1.000	Art. 76(4)(a)(ii): FOS + 60 M
BS_OLCS_014	-90.362287	-68.046306	1.000	Art. 76(4)(a)(ii): FOS + 60 M
BS_OLCS_015	-90.352181	-68.030138	1.000	Art. 76(4)(a)(ii): FOS + 60 M
BS_OLCS_016	-90.341372	-68.014035	1.000	Art. 76(4)(a)(ii): FOS + 60 M
BS_OLCS_017	-90.329863	-67.998001	1.000	Art. 76(4)(a)(ii): FOS + 60 M
BS_OLCS_018	-90.317660	-67.982040	1.000	Art. 76(4)(a)(ii): FOS + 60 M
BS_OLCS_019	-90.304766	-67.966156	1.000	Art. 76(4)(a)(ii): FOS + 60 M
BS_OLCS_020	-90.291188	-67.950354	1.000	Art. 76(4)(a)(ii): FOS + 60 M
BS_OLCS_021	-90.276930	-67.934638	1.000	Art. 76(4)(a)(ii): FOS + 60 M
BS_OLCS_022	-90.261996	-67.919013	1.000	Art. 76(4)(a)(ii): FOS + 60 M
BS_OLCS_023	-90.246394	-67.903481	1.000	Art. 76(4)(a)(ii): FOS + 60 M
BS_OLCS_024	-90.230127	-67.888048	1.000	Art. 76(4)(a)(ii): FOS + 60 M
BS_OLCS_025	-90.213202	-67.872718	1.000	Art. 76(4)(a)(ii): FOS + 60 M
BS_OLCS_026	-90.195624	-67.857494	1.000	Art. 76(4)(a)(ii): FOS + 60 M
BS_OLCS_027	-90.177399	-67.842380	1.000	Art. 76(4)(a)(ii): FOS + 60 M
BS_OLCS_028	-90.158533	-67.827381	1.000	Art. 76(4)(a)(ii): FOS + 60 M
BS_OLCS_029	-90.139033	-67.812501	1.000	Art. 76(4)(a)(ii): FOS + 60 M
BS_OLCS_030	-90.118905	-67.797743	1.000	Art. 76(4)(a)(ii): FOS + 60 M
BS_OLCS_031	-90.098155	-67.783111	1.000	Art. 76(4)(a)(ii): FOS + 60 M
BS_OLCS_032	-90.076789	-67.768610	1.000	Art. 76(4)(a)(ii): FOS + 60 M
BS_OLCS_033	-90.054816	-67.754242	1.000	Art. 76(4)(a)(ii): FOS + 60 M
BS_OLCS_034	-90.032240	-67.740012	1.000	Art. 76(4)(a)(ii): FOS + 60 M
BS_OLCS_035	-90.009070	-67.725923	1.000	Art. 76(4)(a)(ii): FOS + 60 M
BS_OLCS_036	-89.985312	-67.711979	1.000	Art. 76(4)(a)(ii): FOS + 60 M
BS_OLCS_037	-89.960973	-67.698184	1.000	Art. 76(4)(a)(ii): FOS + 60 M
BS_OLCS_038	-89.936062	-67.684541	1.000	Art. 76(4)(a)(ii): FOS + 60 M

Fixed point outer limit continental shelf	Longitude [decimal degrees]	Latitude [decimal degrees]	Distance to next point [M]	Article 76 provision invoked
BS_OLCS_039	-89.910584	-67.671053	1.000	Art. 76(4)(a)(ii): FOS + 60 M
BS_OLCS_040	-89.884548	-67.657725	1.000	Art. 76(4)(a)(ii): FOS + 60 M
BS_OLCS_041	-89.857962	-67.644559	1.000	Art. 76(4)(a)(ii): FOS + 60 M
BS_OLCS_042	-89.830833	-67.631559	1.000	Art. 76(4)(a)(ii): FOS + 60 M
BS_OLCS_043	-89.803169	-67.618729	1.000	Art. 76(4)(a)(ii): FOS + 60 M
BS_OLCS_044	-89.774977	-67.606071	1.000	Art. 76(4)(a)(ii): FOS + 60 M
BS_OLCS_045	-89.746267	-67.593589	1.000	Art. 76(4)(a)(ii): FOS + 60 M
BS_OLCS_046	-89.717046	-67.581286	23.684	Art. 76(4)(a)(ii): FOS + 60 M
BS_OLCS_047	-89.027559	-67.290521	1.000	Art. 76(4)(a)(ii): FOS + 60 M
BS_OLCS_048	-88.998618	-67.278249	1.000	Art. 76(4)(a)(ii): FOS + 60 M
BS_OLCS_049	-88.969182	-67.266159	1.000	Art. 76(4)(a)(ii): FOS + 60 M
BS_OLCS_050	-88.939258	-67.254256	1.000	Art. 76(4)(a)(ii): FOS + 60 M
BS_OLCS_051	-88.908856	-67.242541	1.000	Art. 76(4)(a)(ii): FOS + 60 M
BS_OLCS_052	-88.877983	-67.231018	1.000	Art. 76(4)(a)(ii): FOS + 60 M
BS_OLCS_053	-88.846648	-67.219689	1.000	Art. 76(4)(a)(ii): FOS + 60 M
BS_OLCS_054	-88.814859	-67.208559	1.000	Art. 76(4)(a)(ii): FOS + 60 M
BS_OLCS_055	-88.782626	-67.197629	1.000	Art. 76(4)(a)(ii): FOS + 60 M
BS_OLCS_056	-88.749957	-67.186902	1.000	Art. 76(4)(a)(ii): FOS + 60 M
BS_OLCS_057	-88.716861	-67.176381	1.000	Art. 76(4)(a)(ii): FOS + 60 M
BS_OLCS_058	-88.683346	-67.166068	1.000	Art. 76(4)(a)(ii): FOS + 60 M
BS_OLCS_059	-88.649422	-67.155967	1.000	Art. 76(4)(a)(ii): FOS + 60 M
BS_OLCS_060	-88.615097	-67.146079	1.000	Art. 76(4)(a)(ii): FOS + 60 M
BS_OLCS_061	-88.580381	-67.136408	1.000	Art. 76(4)(a)(ii): FOS + 60 M
BS_OLCS_062	-88.545284	-67.126955	1.000	Art. 76(4)(a)(ii): FOS + 60 M
BS_OLCS_063	-88.509813	-67.117723	1.000	Art. 76(4)(a)(ii): FOS + 60 M
BS_OLCS_064	-88.473978	-67.108715	1.000	Art. 76(4)(a)(ii): FOS + 60 M
BS_OLCS_065	-88.437790	-67.099932	1.000	Art. 76(4)(a)(ii): FOS + 60 M
BS_OLCS_066	-88.401256	-67.091377	1.000	Art. 76(4)(a)(ii): FOS + 60 M
BS_OLCS_067	-88.364387	-67.083052	1.000	Art. 76(4)(a)(ii): FOS + 60 M
BS_OLCS_068	-88.327192	-67.074958	1.000	Art. 76(4)(a)(ii): FOS + 60 M
BS_OLCS_069	-88.289681	-67.067099	1.000	Art. 76(4)(a)(ii): FOS + 60 M
BS_OLCS_070	-88.251863	-67.059476	1.000	Art. 76(4)(a)(ii): FOS + 60 M
BS_OLCS_071	-88.213748	-67.052090	1.000	Art. 76(4)(a)(ii): FOS + 60 M
BS_OLCS_072	-88.175345	-67.044944	1.000	Art. 76(4)(a)(ii): FOS + 60 M
BS_OLCS_073	-88.136665	-67.038040	1.000	Art. 76(4)(a)(ii): FOS + 60 M
BS_OLCS_074	-88.097718	-67.031379	1.000	Art. 76(4)(a)(ii): FOS + 60 M
BS_OLCS_075	-88.058512	-67.024962	1.000	Art. 76(4)(a)(ii): FOS + 60 M
BS_OLCS_076	-88.019058	-67.018792	1.000	Art. 76(4)(a)(ii): FOS + 60 M
BS_OLCS_077	-87.979366	-67.012870	1.000	Art. 76(4)(a)(ii): FOS + 60 M

Fixed point outer limit continental shelf	Longitude [decimal degrees]	Latitude [decimal degrees]	Distance to next point [M]	Article 76 provision invoked
BS_OLCS_078	-87.939446	-67.007197	1.000	Art. 76(4)(a)(ii): FOS + 60 M
BS_OLCS_079	-87.899308	-67.001775	1.000	Art. 76(4)(a)(ii): FOS + 60 M
BS_OLCS_080	-87.858961	-66.996605	1.000	Art. 76(4)(a)(ii): FOS + 60 M
BS_OLCS_081	-87.818417	-66.991689	1.000	Art. 76(4)(a)(ii): FOS + 60 M
BS_OLCS_082	-87.777684	-66.987027	1.000	Art. 76(4)(a)(ii): FOS + 60 M
BS_OLCS_083	-87.736774	-66.982620	1.000	Art. 76(4)(a)(ii): FOS + 60 M
BS_OLCS_084	-87.695695	-66.978471	1.000	Art. 76(4)(a)(ii): FOS + 60 M
BS_OLCS_085	-87.654460	-66.974580	1.000	Art. 76(4)(a)(ii): FOS + 60 M
BS_OLCS_086	-87.613076	-66.970947	1.000	Art. 76(4)(a)(ii): FOS + 60 M
BS_OLCS_087	-87.571556	-66.967574	1.000	Art. 76(4)(a)(ii): FOS + 60 M
BS_OLCS_088	-87.529909	-66.964462	1.000	Art. 76(4)(a)(ii): FOS + 60 M
BS_OLCS_089	-87.488145	-66.961611	1.000	Art. 76(4)(a)(ii): FOS + 60 M
BS_OLCS_090	-87.446275	-66.959022	1.000	Art. 76(4)(a)(ii): FOS + 60 M
BS_OLCS_091	-87.404308	-66.956695	1.000	Art. 76(4)(a)(ii): FOS + 60 M
BS_OLCS_092	-87.362256	-66.954632	1.000	Art. 76(4)(a)(ii): FOS + 60 M
BS_OLCS_093	-87.320128	-66.952833	1.000	Art. 76(4)(a)(ii): FOS + 60 M
BS_OLCS_094	-87.277936	-66.951297	1.000	Art. 76(4)(a)(ii): FOS + 60 M
BS_OLCS_095	-87.235688	-66.950026	1.000	Art. 76(4)(a)(ii): FOS + 60 M
BS_OLCS_096	-87.193396	-66.949021	1.000	Art. 76(4)(a)(ii): FOS + 60 M
BS_OLCS_097	-87.151070	-66.948280	1.000	Art. 76(4)(a)(ii): FOS + 60 M
BS_OLCS_098	-87.108720	-66.947804	1.000	Art. 76(4)(a)(ii): FOS + 60 M
BS_OLCS_099	-87.066356	-66.947594	1.000	Art. 76(4)(a)(ii): FOS + 60 M
BS_OLCS_100	-87.023990	-66.947649	1.000	Art. 76(4)(a)(ii): FOS + 60 M
BS_OLCS_101	-86.981631	-66.947970	1.000	Art. 76(4)(a)(ii): FOS + 60 M
BS_OLCS_102	-86.939290	-66.948556	1.000	Art. 76(4)(a)(ii): FOS + 60 M
BS_OLCS_103	-86.896977	-66.949408	1.000	Art. 76(4)(a)(ii): FOS + 60 M
BS_OLCS_104	-86.854702	-66.950524	1.000	Art. 76(4)(a)(ii): FOS + 60 M
BS_OLCS_105	-86.812476	-66.951905	1.000	Art. 76(4)(a)(ii): FOS + 60 M
BS_OLCS_106	-86.770309	-66.953550	1.000	Art. 76(4)(a)(ii): FOS + 60 M
BS_OLCS_107	-86.728211	-66.955460	1.000	Art. 76(4)(a)(ii): FOS + 60 M
BS_OLCS_108	-86.686194	-66.957633	1.000	Art. 76(4)(a)(ii): FOS + 60 M
BS_OLCS_109	-86.644266	-66.960069	1.000	Art. 76(4)(a)(ii): FOS + 60 M
BS_OLCS_110	-86.602439	-66.962767	1.000	Art. 76(4)(a)(ii): FOS + 60 M
BS_OLCS_111	-86.560722	-66.965727	1.000	Art. 76(4)(a)(ii): FOS + 60 M
BS_OLCS_112	-86.519127	-66.968948	1.000	Art. 76(4)(a)(ii): FOS + 60 M
BS_OLCS_113	-86.477662	-66.972429	1.000	Art. 76(4)(a)(ii): FOS + 60 M
BS_OLCS_114	-86.436339	-66.976170	1.000	Art. 76(4)(a)(ii): FOS + 60 M
BS_OLCS_115	-86.395168	-66.980169	1.000	Art. 76(4)(a)(ii): FOS + 60 M
BS_OLCS_116	-86.354158	-66.984426	1.000	Art. 76(4)(a)(ii): FOS + 60 M

Fixed point outer limit continental shelf	Longitude [decimal degrees]	Latitude [decimal degrees]	Distance to next point [M]	Article 76 provision invoked
BS_OLCS_117	-86.313321	-66.988938	1.000	Art. 76(4)(a)(ii): FOS + 60 M
BS_OLCS_118	-86.272665	-66.993707	1.000	Art. 76(4)(a)(ii): FOS + 60 M
BS_OLCS_119	-86.232202	-66.998729	1.000	Art. 76(4)(a)(ii): FOS + 60 M
BS_OLCS_120	-86.191941	-67.004004	1.000	Art. 76(4)(a)(ii): FOS + 60 M
BS_OLCS_121	-86.151893	-67.009531	1.000	Art. 76(4)(a)(ii): FOS + 60 M
BS_OLCS_122	-86.112066	-67.015308	1.000	Art. 76(4)(a)(ii): FOS + 60 M
BS_OLCS_123	-86.072472	-67.021333	1.000	Art. 76(4)(a)(ii): FOS + 60 M
BS_OLCS_124	-86.033121	-67.027606	1.000	Art. 76(4)(a)(ii): FOS + 60 M
BS_OLCS_125	-85.994021	-67.034125	1.000	Art. 76(4)(a)(ii): FOS + 60 M
BS_OLCS_126	-85.955184	-67.040888	1.000	Art. 76(4)(a)(ii): FOS + 60 M
BS_OLCS_127	-85.916618	-67.047893	1.000	Art. 76(4)(a)(ii): FOS + 60 M
BS_OLCS_128	-85.878335	-67.055139	23.794	Art. 76(4)(a)(ii): FOS + 60 M
BS_OLCS_129	-84.962457	-67.226270	54.285	Art. 76(4)(a)(ii): FOS + 60 M
BS_OLCS_130	-82.760263	-66.950158	59.517	Art. 76(4)(a)(ii): FOS + 60 M
BS_OLCS_131	-81.001825	-66.251290	59.251	Art. 76(4)(a)(i): 1% Sediment Thickness
BS_OLCS_132	-80.222727	-65.320611	22.234	Art. 76(4)(a)(i): 1% Sediment Thickness
BS_OLCS_133	-79.807539	-64.995190	2.143	Art. 76(4)(a)(ii): FOS + 60 M
BS_OLCS_134	-79.766209	-64.964196	1.000	Art. 76(4)(a)(ii): FOS + 60 M
BS_OLCS_135	-79.746688	-64.949791	1.000	Art. 76(4)(a)(ii): FOS + 60 M
BS_OLCS_136	-79.726625	-64.935524	1.000	Art. 76(4)(a)(ii): FOS + 60 M
BS_OLCS_137	-79.706026	-64.921398	1.000	Art. 76(4)(a)(ii): FOS + 60 M
BS_OLCS_138	-79.684897	-64.907416	1.000	Art. 76(4)(a)(ii): FOS + 60 M
BS_OLCS_139	-79.663244	-64.893583	1.000	Art. 76(4)(a)(ii): FOS + 60 M
BS_OLCS_140	-79.641074	-64.879901	1.000	Art. 76(4)(a)(ii): FOS + 60 M
BS_OLCS_141	-79.618393	-64.866375	1.000	Art. 76(4)(a)(ii): FOS + 60 M
BS_OLCS_142	-79.595208	-64.853008	1.000	Art. 76(4)(a)(ii): FOS + 60 M
BS_OLCS_143	-79.571526	-64.839803	1.000	Art. 76(4)(a)(ii): FOS + 60 M
BS_OLCS_144	-79.547353	-64.826764	1.000	Art. 76(4)(a)(ii): FOS + 60 M
BS_OLCS_145	-79.522697	-64.813895	1.000	Art. 76(4)(a)(ii): FOS + 60 M
BS_OLCS_146	-79.497564	-64.801198	1.000	Art. 76(4)(a)(ii): FOS + 60 M
BS_OLCS_147	-79.471963	-64.788677	1.000	Art. 76(4)(a)(ii): FOS + 60 M
BS_OLCS_148	-79.445899	-64.776335	1.000	Art. 76(4)(a)(ii): FOS + 60 M
BS_OLCS_149	-79.419380	-64.764175	1.000	Art. 76(4)(a)(ii): FOS + 60 M
BS_OLCS_150	-79.392414	-64.752201	1.000	Art. 76(4)(a)(ii): FOS + 60 M
BS_OLCS_151	-79.365009	-64.740415	1.000	Art. 76(4)(a)(ii): FOS + 60 M
BS_OLCS_152	-79.337171	-64.728820	1.000	Art. 76(4)(a)(ii): FOS + 60 M
BS_OLCS_153	-79.308909	-64.717421	1.000	Art. 76(4)(a)(ii): FOS + 60 M
BS_OLCS_154	-79.280230	-64.706218	1.000	Art. 76(4)(a)(ii): FOS + 60 M
BS_OLCS_155	-79.251143	-64.695216	1.000	Art. 76(4)(a)(ii): FOS + 60 M

Fixed point outer limit continental shelf	Longitude [decimal degrees]	Latitude [decimal degrees]	Distance to next point [M]	Article 76 provision invoked
BS_OLCS_156	-79.221654	-64.684417	1.000	Art. 76(4)(a)(ii): FOS + 60 M
BS_OLCS_157	-79.191773	-64.673824	1.000	Art. 76(4)(a)(ii): FOS + 60 M
BS_OLCS_158	-79.161506	-64.663439	1.000	Art. 76(4)(a)(ii): FOS + 60 M
BS_OLCS_159	-79.130863	-64.653265	1.000	Art. 76(4)(a)(ii): FOS + 60 M
BS_OLCS_160	-79.099851	-64.643305	1.000	Art. 76(4)(a)(ii): FOS + 60 M
BS_OLCS_161	-79.068479	-64.633562	1.000	Art. 76(4)(a)(ii): FOS + 60 M
BS_OLCS_162	-79.036755	-64.624037	1.000	Art. 76(4)(a)(ii): FOS + 60 M
BS_OLCS_163	-79.004687	-64.614734	1.000	Art. 76(4)(a)(ii): FOS + 60 M
BS_OLCS_164	-78.972285	-64.605654	1.000	Art. 76(4)(a)(ii): FOS + 60 M
BS_OLCS_165	-78.939555	-64.596800	1.000	Art. 76(4)(a)(ii): FOS + 60 M
BS_OLCS_166	-78.906508	-64.588173	1.000	Art. 76(4)(a)(ii): FOS + 60 M
BS_OLCS_167	-78.873151	-64.579778	1.000	Art. 76(4)(a)(ii): FOS + 60 M
BS_OLCS_168	-78.839494	-64.571614	1.000	Art. 76(4)(a)(ii): FOS + 60 M
BS_OLCS_169	-78.805544	-64.563685	1.000	Art. 76(4)(a)(ii): FOS + 60 M
BS_OLCS_170	-78.771312	-64.555993	1.000	Art. 76(4)(a)(ii): FOS + 60 M
BS_OLCS_171	-78.736805	-64.548539	1.000	Art. 76(4)(a)(ii): FOS + 60 M
BS_OLCS_172	-78.702032	-64.541325	1.000	Art. 76(4)(a)(ii): FOS + 60 M
BS_OLCS_173	-78.667003	-64.534353	1.000	Art. 76(4)(a)(ii): FOS + 60 M
BS_OLCS_174	-78.631727	-64.527625	1.000	Art. 76(4)(a)(ii): FOS + 60 M
BS_OLCS_175	-78.596212	-64.521142	1.000	Art. 76(4)(a)(ii): FOS + 60 M
BS_OLCS_176	-78.560467	-64.514907	1.000	Art. 76(4)(a)(ii): FOS + 60 M
BS_OLCS_177	-78.524503	-64.508920	1.000	Art. 76(4)(a)(ii): FOS + 60 M
BS_OLCS_178	-78.488327	-64.503184	1.000	Art. 76(4)(a)(ii): FOS + 60 M
BS_OLCS_179	-78.451948	-64.497699	1.000	Art. 76(4)(a)(ii): FOS + 60 M
BS_OLCS_180	-78.415377	-64.492467	1.000	Art. 76(4)(a)(ii): FOS + 60 M
BS_OLCS_181	-78.378623	-64.487490	1.000	Art. 76(4)(a)(ii): FOS + 60 M
BS_OLCS_182	-78.341694	-64.482768	1.000	Art. 76(4)(a)(ii): FOS + 60 M
BS_OLCS_183	-78.304600	-64.478302	1.000	Art. 76(4)(a)(ii): FOS + 60 M
BS_OLCS_184	-78.267350	-64.474095	1.000	Art. 76(4)(a)(ii): FOS + 60 M
BS_OLCS_185	-78.229954	-64.470146	1.000	Art. 76(4)(a)(ii): FOS + 60 M
BS_OLCS_186	-78.192420	-64.466458	1.000	Art. 76(4)(a)(ii): FOS + 60 M
BS_OLCS_187	-78.154760	-64.463030	1.000	Art. 76(4)(a)(ii): FOS + 60 M
BS_OLCS_188	-78.116980	-64.459864	1.000	Art. 76(4)(a)(ii): FOS + 60 M
BS_OLCS_189	-78.079092	-64.456960	1.000	Art. 76(4)(a)(ii): FOS + 60 M
BS_OLCS_190	-78.041105	-64.454320	1.000	Art. 76(4)(a)(ii): FOS + 60 M
BS_OLCS_191	-78.003028	-64.451943	1.000	Art. 76(4)(a)(ii): FOS + 60 M
BS_OLCS_192	-77.964871	-64.449831	59.655	Art. 76(4)(a)(ii): FOS + 60 M
BS_OLCS_193	-76.353312	-63.753017	1.000	Art. 76(4)(a)(ii): FOS + 60 M
BS_OLCS_194	-76.347076	-63.736634	1.000	Art. 76(4)(a)(ii): FOS + 60 M

Fixed point outer limit continental shelf	Longitude [decimal degrees]	Latitude [decimal degrees]	Distance to next point [M]	Article 76 provision invoked
BS_OLCS_195	-76.340233	-63.720299	1.000	Art. 76(4)(a)(ii): FOS + 60 M
BS_OLCS_196	-76.332784	-63.704017	1.000	Art. 76(4)(a)(ii): FOS + 60 M
BS_OLCS_197	-76.324734	-63.687792	1.000	Art. 76(4)(a)(ii): FOS + 60 M
BS_OLCS_198	-76.316085	-63.671627	1.000	Art. 76(4)(a)(ii): FOS + 60 M
BS_OLCS_199	-76.306842	-63.655529	1.000	Art. 76(4)(a)(ii): FOS + 60 M
BS_OLCS_200	-76.297006	-63.639500	1.000	Art. 76(4)(a)(ii): FOS + 60 M
BS_OLCS_201	-76.286582	-63.623546	1.000	Art. 76(4)(a)(ii): FOS + 60 M
BS_OLCS_202	-76.275575	-63.607670	1.000	Art. 76(4)(a)(ii): FOS + 60 M
BS_OLCS_203	-76.263987	-63.591878	1.000	Art. 76(4)(a)(ii): FOS + 60 M
BS_OLCS_204	-76.251822	-63.576172	1.000	Art. 76(4)(a)(ii): FOS + 60 M
BS_OLCS_205	-76.239086	-63.560558	1.000	Art. 76(4)(a)(ii): FOS + 60 M
BS_OLCS_206	-76.225782	-63.545039	1.000	Art. 76(4)(a)(ii): FOS + 60 M
BS_OLCS_207	-76.211915	-63.529620	1.000	Art. 76(4)(a)(ii): FOS + 60 M
BS_OLCS_208	-76.197489	-63.514305	1.000	Art. 76(4)(a)(ii): FOS + 60 M
BS_OLCS_209	-76.182510	-63.499097	1.000	Art. 76(4)(a)(ii): FOS + 60 M
BS_OLCS_210	-76.166981	-63.484002	1.000	Art. 76(4)(a)(ii): FOS + 60 M
BS_OLCS_211	-76.150908	-63.469022	1.000	Art. 76(4)(a)(ii): FOS + 60 M
BS_OLCS_212	-76.134297	-63.454163	1.000	Art. 76(4)(a)(ii): FOS + 60 M
BS_OLCS_213	-76.117152	-63.439427	1.000	Art. 76(4)(a)(ii): FOS + 60 M
BS_OLCS_214	-76.099479	-63.424819	1.000	Art. 76(4)(a)(ii): FOS + 60 M
BS_OLCS_215	-76.081283	-63.410343	1.000	Art. 76(4)(a)(ii): FOS + 60 M
BS_OLCS_216	-76.062569	-63.396002	1.000	Art. 76(4)(a)(ii): FOS + 60 M
BS_OLCS_217	-76.043344	-63.381800	1.000	Art. 76(4)(a)(ii): FOS + 60 M
BS_OLCS_218	-76.023614	-63.367741	1.000	Art. 76(4)(a)(ii): FOS + 60 M
BS_OLCS_219	-76.003383	-63.353829	1.000	Art. 76(4)(a)(ii): FOS + 60 M
BS_OLCS_220	-75.982659	-63.340067	1.000	Art. 76(4)(a)(ii): FOS + 60 M
BS_OLCS_221	-75.961447	-63.326459	1.000	Art. 76(4)(a)(ii): FOS + 60 M
BS_OLCS_222	-75.939753	-63.313009	1.000	Art. 76(4)(a)(ii): FOS + 60 M
BS_OLCS_223	-75.917585	-63.299719	1.000	Art. 76(4)(a)(ii): FOS + 60 M
BS_OLCS_224	-75.894947	-63.286594	1.000	Art. 76(4)(a)(ii): FOS + 60 M
BS_OLCS_225	-75.871848	-63.273637	1.000	Art. 76(4)(a)(ii): FOS + 60 M
BS_OLCS_226	-75.848293	-63.260851	1.000	Art. 76(4)(a)(ii): FOS + 60 M
BS_OLCS_227	-75.824289	-63.248240	1.000	Art. 76(4)(a)(ii): FOS + 60 M
BS_OLCS_228	-75.799844	-63.235806	49.689	Art. 76(4)(a)(ii): FOS + 60 M
BS_OLCS_229	-74.605047	-62.615208	1.000	Art. 76(4)(a)(ii): FOS + 60 M
BS_OLCS_230	-74.581388	-62.602666	1.000	Art. 76(4)(a)(ii): FOS + 60 M
BS_OLCS_231	-74.557300	-62.590304	1.000	Art. 76(4)(a)(ii): FOS + 60 M
BS_OLCS_232	-74.532787	-62.578123	1.000	Art. 76(4)(a)(ii): FOS + 60 M
BS_OLCS_233	-74.507858	-62.566129	1.000	Art. 76(4)(a)(ii): FOS + 60 M

Fixed point outer limit continental shelf	Longitude [decimal degrees]	Latitude [decimal degrees]	Distance to next point [M]	Article 76 provision invoked
BS_OLCS_234	-74.482520	-62.554323	1.000	Art. 76(4)(a)(ii): FOS + 60 M
BS_OLCS_235	-74.456778	-62.542708	1.000	Art. 76(4)(a)(ii): FOS + 60 M
BS_OLCS_236	-74.430641	-62.531289	9.336	Art. 76(4)(a)(ii): FOS + 60 M
BS_OLCS_237	-74.185507	-62.425472	1.000	Art. 76(4)(a)(ii): FOS + 60 M
BS_OLCS_238	-74.159065	-62.414255	1.000	Art. 76(4)(a)(ii): FOS + 60 M
BS_OLCS_239	-74.132244	-62.403239	1.000	Art. 76(4)(a)(ii): FOS + 60 M
BS_OLCS_240	-74.105051	-62.392426	1.000	Art. 76(4)(a)(ii): FOS + 60 M
BS_OLCS_241	-74.077492	-62.381819	1.000	Art. 76(4)(a)(ii): FOS + 60 M
BS_OLCS_242	-74.049576	-62.371422	1.000	Art. 76(4)(a)(ii): FOS + 60 M
BS_OLCS_243	-74.021310	-62.361236	1.000	Art. 76(4)(a)(ii): FOS + 60 M
BS_OLCS_244	-73.992701	-62.351265	1.000	Art. 76(4)(a)(ii): FOS + 60 M
BS_OLCS_245	-73.963758	-62.341511	1.000	Art. 76(4)(a)(ii): FOS + 60 M
BS_OLCS_246	-73.934487	-62.331976	1.000	Art. 76(4)(a)(ii): FOS + 60 M
BS_OLCS_247	-73.904897	-62.322662	1.000	Art. 76(4)(a)(ii): FOS + 60 M
BS_OLCS_248	-73.874996	-62.313573	1.000	Art. 76(4)(a)(ii): FOS + 60 M
BS_OLCS_249	-73.844791	-62.304711	1.000	Art. 76(4)(a)(ii): FOS + 60 M
BS_OLCS_250	-73.814290	-62.296077	1.000	Art. 76(4)(a)(ii): FOS + 60 M
BS_OLCS_251	-73.783502	-62.287675	1.000	Art. 76(4)(a)(ii): FOS + 60 M
BS_OLCS_252	-73.752435	-62.279505	1.000	Art. 76(4)(a)(ii): FOS + 60 M
BS_OLCS_253	-73.721096	-62.271571	1.000	Art. 76(4)(a)(ii): FOS + 60 M
BS_OLCS_254	-73.689493	-62.263874	1.000	Art. 76(4)(a)(ii): FOS + 60 M
BS_OLCS_255	-73.657636	-62.256416	1.000	Art. 76(4)(a)(ii): FOS + 60 M
BS_OLCS_256	-73.625532	-62.249200	1.000	Art. 76(4)(a)(ii): FOS + 60 M
BS_OLCS_257	-73.593190	-62.242226	1.000	Art. 76(4)(a)(ii): FOS + 60 M
BS_OLCS_258	-73.560617	-62.235497	1.000	Art. 76(4)(a)(ii): FOS + 60 M
BS_OLCS_259	-73.527823	-62.229014	1.000	Art. 76(4)(a)(ii): FOS + 60 M
BS_OLCS_260	-73.494816	-62.222780	1.000	Art. 76(4)(a)(ii): FOS + 60 M
BS_OLCS_261	-73.461604	-62.216795	1.000	Art. 76(4)(a)(ii): FOS + 60 M
BS_OLCS_262	-73.428195	-62.211061	1.000	Art. 76(4)(a)(ii): FOS + 60 M
BS_OLCS_263	-73.394599	-62.205579	1.000	Art. 76(4)(a)(ii): FOS + 60 M
BS_OLCS_264	-73.360824	-62.200352	1.000	Art. 76(4)(a)(ii): FOS + 60 M
BS_OLCS_265	-73.326878	-62.195380	1.000	Art. 76(4)(a)(ii): FOS + 60 M
BS_OLCS_266	-73.292770	-62.190665	1.000	Art. 76(4)(a)(ii): FOS + 60 M
BS_OLCS_267	-73.258509	-62.186207	1.000	Art. 76(4)(a)(ii): FOS + 60 M
BS_OLCS_268	-73.224103	-62.182008	1.000	Art. 76(4)(a)(ii): FOS + 60 M
BS_OLCS_269	-73.189562	-62.178069	1.000	Art. 76(4)(a)(ii): FOS + 60 M
BS_OLCS_270	-73.154893	-62.174391	1.000	Art. 76(4)(a)(ii): FOS + 60 M
BS_OLCS_271	-73.120107	-62.170975	1.000	Art. 76(4)(a)(ii): FOS + 60 M
BS_OLCS_272	-73.085210	-62.167822	1.000	Art. 76(4)(a)(ii): FOS + 60 M

Fixed point outer limit continental shelf	Longitude [decimal degrees]	Latitude [decimal degrees]	Distance to next point [M]	Article 76 provision invoked
BS_OLCS_273	-73.050213	-62.164932	1.000	Art. 76(4)(a)(ii): FOS + 60 M
BS_OLCS_274	-73.015124	-62.162306	1.000	Art. 76(4)(a)(ii): FOS + 60 M
BS_OLCS_275	-72.979952	-62.159945	1.000	Art. 76(4)(a)(ii): FOS + 60 M
BS_OLCS_276	-72.944706	-62.157850	1.000	Art. 76(4)(a)(ii): FOS + 60 M
BS_OLCS_277	-72.909394	-62.156021	1.000	Art. 76(4)(a)(ii): FOS + 60 M
BS_OLCS_278	-72.874026	-62.154458	1.000	Art. 76(4)(a)(ii): FOS + 60 M
BS_OLCS_279	-72.838610	-62.153162	1.000	Art. 76(4)(a)(ii): FOS + 60 M
BS_OLCS_280	-72.803156	-62.152133	1.000	Art. 76(4)(a)(ii): FOS + 60 M
BS_OLCS_281	-72.767672	-62.151372	1.000	Art. 76(4)(a)(ii): FOS + 60 M
BS_OLCS_282	-72.732166	-62.150878	1.000	Art. 76(4)(a)(ii): FOS + 60 M
BS_OLCS_283	-72.696649	-62.150652	1.000	Art. 76(4)(a)(ii): FOS + 60 M
BS_OLCS_284	-72.661129	-62.150694	1.000	Art. 76(4)(a)(ii): FOS + 60 M
BS_OLCS_285	-72.625615	-62.151003	1.000	Art. 76(4)(a)(ii): FOS + 60 M
BS_OLCS_286	-72.590116	-62.151581	1.000	Art. 76(4)(a)(ii): FOS + 60 M
BS_OLCS_287	-72.554640	-62.152426	1.000	Art. 76(4)(a)(ii): FOS + 60 M
BS_OLCS_288	-72.519196	-62.153538	1.000	Art. 76(4)(a)(ii): FOS + 60 M
BS_OLCS_289	-72.483795	-62.154918	1.000	Art. 76(4)(a)(ii): FOS + 60 M
BS_OLCS_290	-72.448443	-62.156564	1.000	Art. 76(4)(a)(ii): FOS + 60 M
BS_OLCS_291	-72.413151	-62.158476	1.000	Art. 76(4)(a)(ii): FOS + 60 M
BS_OLCS_292	-72.377927	-62.160655	1.000	Art. 76(4)(a)(ii): FOS + 60 M
BS_OLCS_293	-72.342780	-62.163098	1.000	Art. 76(4)(a)(ii): FOS + 60 M
BS_OLCS_294	-72.307719	-62.165807	59.908	Art. 76(4)(a)(ii): FOS + 60 M
BS_OLCS_295	-70.519019	-61.637229	1.000	Art. 76(4)(a)(ii): FOS + 60 M
BS_OLCS_296	-70.509359	-61.621259	1.000	Art. 76(4)(a)(ii): FOS + 60 M
BS_OLCS_297	-70.499152	-61.605367	1.000	Art. 76(4)(a)(ii): FOS + 60 M
BS_OLCS_298	-70.488401	-61.589556	1.000	Art. 76(4)(a)(ii): FOS + 60 M
BS_OLCS_299	-70.477110	-61.573833	1.000	Art. 76(4)(a)(ii): FOS + 60 M
BS_OLCS_300	-70.465283	-61.558200	1.000	Art. 76(4)(a)(ii): FOS + 60 M
BS_OLCS_301	-70.452923	-61.542663	1.000	Art. 76(4)(a)(ii): FOS + 60 M
BS_OLCS_302	-70.440035	-61.527224	1.000	Art. 76(4)(a)(ii): FOS + 60 M
BS_OLCS_303	-70.426622	-61.511889	1.000	Art. 76(4)(a)(ii): FOS + 60 M
BS_OLCS_304	-70.412690	-61.496662	1.000	Art. 76(4)(a)(ii): FOS + 60 M
BS_OLCS_305	-70.398243	-61.481545	1.000	Art. 76(4)(a)(ii): FOS + 60 M
BS_OLCS_306	-70.383285	-61.466545	1.000	Art. 76(4)(a)(ii): FOS + 60 M
BS_OLCS_307	-70.367822	-61.451664	1.000	Art. 76(4)(a)(ii): FOS + 60 M
BS_OLCS_308	-70.351857	-61.436906	1.000	Art. 76(4)(a)(ii): FOS + 60 M
BS_OLCS_309	-70.335396	-61.422276	1.000	Art. 76(4)(a)(ii): FOS + 60 M
BS_OLCS_310	-70.318444	-61.407777	1.000	Art. 76(4)(a)(ii): FOS + 60 M
BS_OLCS_311	-70.301006	-61.393414	1.000	Art. 76(4)(a)(ii): FOS + 60 M

Fixed point outer limit continental shelf	Longitude [decimal degrees]	Latitude [decimal degrees]	Distance to next point [M]	Article 76 provision invoked
BS_OLCS_312	-70.283088	-61.379189	1.000	Art. 76(4)(a)(ii): FOS + 60 M
BS_OLCS_313	-70.264694	-61.365107	1.000	Art. 76(4)(a)(ii): FOS + 60 M
BS_OLCS_314	-70.245830	-61.351171	1.000	Art. 76(4)(a)(ii): FOS + 60 M
BS_OLCS_315	-70.226503	-61.337386	1.000	Art. 76(4)(a)(ii): FOS + 60 M
BS_OLCS_316	-70.206717	-61.323754	1.000	Art. 76(4)(a)(ii): FOS + 60 M
BS_OLCS_317	-70.186478	-61.310280	1.000	Art. 76(4)(a)(ii): FOS + 60 M
BS_OLCS_318	-70.165792	-61.296966	1.000	Art. 76(4)(a)(ii): FOS + 60 M
BS_OLCS_319	-70.144666	-61.283817	1.000	Art. 76(4)(a)(ii): FOS + 60 M
BS_OLCS_320	-70.123105	-61.270836	1.000	Art. 76(4)(a)(ii): FOS + 60 M
BS_OLCS_321	-70.101115	-61.258025	1.000	Art. 76(4)(a)(ii): FOS + 60 M
BS_OLCS_322	-70.078703	-61.245390	1.000	Art. 76(4)(a)(ii): FOS + 60 M
BS_OLCS_323	-70.055875	-61.232932	1.000	Art. 76(4)(a)(ii): FOS + 60 M
BS_OLCS_324	-70.032637	-61.220655	1.000	Art. 76(4)(a)(ii): FOS + 60 M
BS_OLCS_325	-70.008997	-61.208563	1.000	Art. 76(4)(a)(ii): FOS + 60 M
BS_OLCS_326	-69.984960	-61.196657	1.000	Art. 76(4)(a)(ii): FOS + 60 M
BS_OLCS_327	-69.960533	-61.184943	1.000	Art. 76(4)(a)(ii): FOS + 60 M
BS_OLCS_328	-69.935723	-61.173422	1.000	Art. 76(4)(a)(ii): FOS + 60 M
BS_OLCS_329	-69.910538	-61.162097	1.000	Art. 76(4)(a)(ii): FOS + 60 M
BS_OLCS_330	-69.884983	-61.150973	1.000	Art. 76(4)(a)(ii): FOS + 60 M
BS_OLCS_331	-69.859065	-61.140050	1.000	Art. 76(4)(a)(ii): FOS + 60 M
BS_OLCS_332	-69.832793	-61.129333	1.000	Art. 76(4)(a)(ii): FOS + 60 M
BS_OLCS_333	-69.806173	-61.118823	1.000	Art. 76(4)(a)(ii): FOS + 60 M
BS_OLCS_334	-69.779212	-61.108524	1.000	Art. 76(4)(a)(ii): FOS + 60 M
BS_OLCS_335	-69.751917	-61.098439	1.000	Art. 76(4)(a)(ii): FOS + 60 M
BS_OLCS_336	-69.724296	-61.088569	1.000	Art. 76(4)(a)(ii): FOS + 60 M
BS_OLCS_337	-69.696356	-61.078918	1.000	Art. 76(4)(a)(ii): FOS + 60 M
BS_OLCS_338	-69.668105	-61.069488	1.000	Art. 76(4)(a)(ii): FOS + 60 M
BS_OLCS_339	-69.639550	-61.060281	1.000	Art. 76(4)(a)(ii): FOS + 60 M
BS_OLCS_340	-69.610699	-61.051300	1.000	Art. 76(4)(a)(ii): FOS + 60 M
BS_OLCS_341	-69.581559	-61.042547	1.000	Art. 76(4)(a)(ii): FOS + 60 M
BS_OLCS_342	-69.552138	-61.034024	1.000	Art. 76(4)(a)(ii): FOS + 60 M
BS_OLCS_343	-69.522445	-61.025734	1.000	Art. 76(4)(a)(ii): FOS + 60 M
BS_OLCS_344	-69.492485	-61.017678	1.000	Art. 76(4)(a)(ii): FOS + 60 M
BS_OLCS_345	-69.462268	-61.009859	1.000	Art. 76(4)(a)(ii): FOS + 60 M
BS_OLCS_346	-69.431802	-61.002279	1.000	Art. 76(4)(a)(ii): FOS + 60 M
BS_OLCS_347	-69.401094	-60.994939	1.000	Art. 76(4)(a)(ii): FOS + 60 M
BS_OLCS_348	-69.370152	-60.987841	1.000	Art. 76(4)(a)(ii): FOS + 60 M
BS_OLCS_349	-69.338984	-60.980988	1.000	Art. 76(4)(a)(ii): FOS + 60 M
BS_OLCS_350	-69.307599	-60.974381	1.000	Art. 76(4)(a)(ii): FOS + 60 M
BS_OLCS_351	-69.276004	-60.968021	1.000	Art. 76(4)(a)(ii): FOS + 60 M

Fixed point outer limit continental shelf	Longitude [decimal degrees]	Latitude [decimal degrees]	Distance to next point [M]	Article 76 provision invoked
BS_OLCS_352	-69.244208	-60.961911	1.000	Art. 76(4)(a)(ii): FOS + 60 M
BS_OLCS_353	-69.212218	-60.956051	1.000	Art. 76(4)(a)(ii): FOS + 60 M
BS_OLCS_354	-69.180044	-60.950444	1.000	Art. 76(4)(a)(ii): FOS + 60 M
BS_OLCS_355	-69.147693	-60.945091	1.000	Art. 76(4)(a)(ii): FOS + 60 M
BS_OLCS_356	-69.115174	-60.939993	1.000	Art. 76(4)(a)(ii): FOS + 60 M
BS_OLCS_357	-69.082494	-60.935151	1.000	Art. 76(4)(a)(ii): FOS + 60 M
BS_OLCS_358	-69.049663	-60.930567	1.000	Art. 76(4)(a)(ii): FOS + 60 M
BS_OLCS_359	-69.016688	-60.926241	1.000	Art. 76(4)(a)(ii): FOS + 60 M
BS_OLCS_360	-68.983579	-60.922176	1.000	Art. 76(4)(a)(ii): FOS + 60 M
BS_OLCS_361	-68.950343	-60.918371	1.000	Art. 76(4)(a)(ii): FOS + 60 M
BS_OLCS_362	-68.916988	-60.914829	1.000	Art. 76(4)(a)(ii): FOS + 60 M
BS_OLCS_363	-68.883525	-60.911549	1.000	Art. 76(4)(a)(ii): FOS + 60 M
BS_OLCS_364	-68.849960	-60.908533	1.000	Art. 76(4)(a)(ii): FOS + 60 M
BS_OLCS_365	-68.816302	-60.905781	1.000	Art. 76(4)(a)(ii): FOS + 60 M
BS_OLCS_366	-68.782560	-60.903294	1.000	Art. 76(4)(a)(ii): FOS + 60 M
BS_OLCS_367	-68.748743	-60.901073	1.000	Art. 76(4)(a)(ii): FOS + 60 M
BS_OLCS_368	-68.714859	-60.899119	1.000	Art. 76(4)(a)(ii): FOS + 60 M
BS_OLCS_369	-68.680916	-60.897431	1.000	Art. 76(4)(a)(ii): FOS + 60 M
BS_OLCS_370	-68.646924	-60.896010	1.000	Art. 76(4)(a)(ii): FOS + 60 M
BS_OLCS_371	-68.612890	-60.894857	1.000	Art. 76(4)(a)(ii): FOS + 60 M
BS_OLCS_372	-68.578823	-60.893971	1.000	Art. 76(4)(a)(ii): FOS + 60 M
BS_OLCS_373	-68.544732	-60.893354	1.000	Art. 76(4)(a)(ii): FOS + 60 M
BS_OLCS_374	-68.510626	-60.893005	1.000	Art. 76(4)(a)(ii): FOS + 60 M
BS_OLCS_375	-68.476513	-60.892924	1.000	Art. 76(4)(a)(ii): FOS + 60 M
BS_OLCS_376	-68.442402	-60.893112	1.000	Art. 76(4)(a)(ii): FOS + 60 M
BS_OLCS_377	-68.408301	-60.893568	1.000	Art. 76(4)(a)(ii): FOS + 60 M
BS_OLCS_378	-68.374219	-60.894292	1.000	Art. 76(4)(a)(ii): FOS + 60 M
BS_OLCS_379	-68.340164	-60.895284	1.000	Art. 76(4)(a)(ii): FOS + 60 M
BS_OLCS_380	-68.306146	-60.896544	1.000	Art. 76(4)(a)(ii): FOS + 60 M
BS_OLCS_381	-68.272172	-60.898071	1.000	Art. 76(4)(a)(ii): FOS + 60 M
BS_OLCS_382	-68.238252	-60.899865	1.000	Art. 76(4)(a)(ii): FOS + 60 M
BS_OLCS_383	-68.204393	-60.901926	1.000	Art. 76(4)(a)(ii): FOS + 60 M
BS_OLCS_384	-68.170605	-60.904253	0.410	Art. 76(4)(a)(ii): FOS + 60 M
BS_OLCS_385	-68.156785	-60.905315	n/a	Intersection 200 M Chile, Art. 76(4)(a)(ii): FOS + 60 M
SFZ_OLCS_001	-63.737677	-59.443720	35.676	Intersection 200 M Chile, Art. 76(4)(a)(ii): FOS + 60 M
SFZ_OLCS_002	-64.741242	-59.146607	1.000	Art. 76(4)(a)(ii): FOS + 60 M
SFZ_OLCS_003	-64.770602	-59.139619	1.333	Art. 76(4)(a)(ii): FOS + 60 M

Fixed point outer limit continental shelf	Longitude [decimal degrees]	Latitude [decimal degrees]	Distance to next point [M]	Article 76 provision invoked
SFZ_OLCS_004	-64.809320	-59.129881	n/a	Intersection 200 M Chile, Art. 76(4)(a)(ii): FOS + 60 M
SFZ_OLCS_005	-59.592156	-57.104878	28.302	Intersection 200 M Argentina, Art. 76(4)(a)(ii): FOS + 60 M
SFZ_OLCS_006	-58.859995	-57.357606	1.000	Art. 76(4)(a)(ii): FOS + 60 M
SFZ_OLCS_007	-58.834110	-57.366601	1.000	Art. 76(4)(a)(ii): FOS + 60 M
SFZ_OLCS_008	-58.808494	-57.375822	1.000	Art. 76(4)(a)(ii): FOS + 60 M
SFZ_OLCS_009	-58.783153	-57.385267	1.000	Art. 76(4)(a)(ii): FOS + 60 M
SFZ_OLCS_010	-58.758093	-57.394934	1.000	Art. 76(4)(a)(ii): FOS + 60 M
SFZ_OLCS_011	-58.733323	-57.404820	1.000	Art. 76(4)(a)(ii): FOS + 60 M
SFZ_OLCS_012	-58.708847	-57.414923	1.000	Art. 76(4)(a)(ii): FOS + 60 M
SFZ_OLCS_013	-58.684673	-57.425240	1.000	Art. 76(4)(a)(ii): FOS + 60 M
SFZ_OLCS_014	-58.660807	-57.435768	1.000	Art. 76(4)(a)(ii): FOS + 60 M
SFZ_OLCS_015	-58.637257	-57.446505	1.000	Art. 76(4)(a)(ii): FOS + 60 M
SFZ_OLCS_016	-58.614027	-57.457448	1.000	Art. 76(4)(a)(ii): FOS + 60 M
SFZ_OLCS_017	-58.591125	-57.468593	1.000	Art. 76(4)(a)(ii): FOS + 60 M
SFZ_OLCS_018	-58.568557	-57.479939	1.000	Art. 76(4)(a)(ii): FOS + 60 M
SFZ_OLCS_019	-58.546329	-57.491482	1.000	Art. 76(4)(a)(ii): FOS + 60 M
SFZ_OLCS_020	-58.524447	-57.503219	1.000	Art. 76(4)(a)(ii): FOS + 60 M
SFZ_OLCS_021	-58.502918	-57.515146	1.000	Art. 76(4)(a)(ii): FOS + 60 M
SFZ_OLCS_022	-58.481747	-57.527262	1.000	Art. 76(4)(a)(ii): FOS + 60 M
SFZ_OLCS_023	-58.460940	-57.539562	1.000	Art. 76(4)(a)(ii): FOS + 60 M
SFZ_OLCS_024	-58.440503	-57.552044	1.000	Art. 76(4)(a)(ii): FOS + 60 M
SFZ_OLCS_025	-58.420441	-57.564703	1.000	Art. 76(4)(a)(ii): FOS + 60 M
SFZ_OLCS_026	-58.400762	-57.577538	1.000	Art. 76(4)(a)(ii): FOS + 60 M
SFZ_OLCS_027	-58.381469	-57.590544	1.000	Art. 76(4)(a)(ii): FOS + 60 M
SFZ_OLCS_028	-58.362568	-57.603718	1.000	Art. 76(4)(a)(ii): FOS + 60 M
SFZ_OLCS_029	-58.344066	-57.617056	1.000	Art. 76(4)(a)(ii): FOS + 60 M
SFZ_OLCS_030	-58.325967	-57.630556	1.000	Art. 76(4)(a)(ii): FOS + 60 M
SFZ_OLCS_031	-58.308276	-57.644213	1.000	Art. 76(4)(a)(ii): FOS + 60 M
SFZ_OLCS_032	-58.290999	-57.658024	1.000	Art. 76(4)(a)(ii): FOS + 60 M
SFZ_OLCS_033	-58.274141	-57.671984	1.000	Art. 76(4)(a)(ii): FOS + 60 M
SFZ_OLCS_034	-58.257707	-57.686092	1.000	Art. 76(4)(a)(ii): FOS + 60 M
SFZ_OLCS_035	-58.241700	-57.700342	1.000	Art. 76(4)(a)(ii): FOS + 60 M
SFZ_OLCS_036	-58.226128	-57.714730	1.000	Art. 76(4)(a)(ii): FOS + 60 M
SFZ_OLCS_037	-58.210993	-57.729254	1.000	Art. 76(4)(a)(ii): FOS + 60 M
SFZ_OLCS_038	-58.196300	-57.743909	1.000	Art. 76(4)(a)(ii): FOS + 60 M
SFZ_OLCS_039	-58.182055	-57.758691	1.000	Art. 76(4)(a)(ii): FOS + 60 M
SFZ_OLCS_040	-58.168261	-57.773597	1.000	Art. 76(4)(a)(ii): FOS + 60 M
SFZ_OLCS_041	-58.154923	-57.788622	1.000	Art. 76(4)(a)(ii): FOS + 60 M

Fixed point outer limit continental shelf	Longitude [decimal degrees]	Latitude [decimal degrees]	Distance to next point [M]	Article 76 provision invoked
SFZ_OLCS_042	-58.142044	-57.803762	1.000	Art. 76(4)(a)(ii): FOS + 60 M
SFZ_OLCS_043	-58.129629	-57.819013	1.000	Art. 76(4)(a)(ii): FOS + 60 M
SFZ_OLCS_044	-58.117682	-57.834372	1.000	Art. 76(4)(a)(ii): FOS + 60 M
SFZ_OLCS_045	-58.106206	-57.849833	1.000	Art. 76(4)(a)(ii): FOS + 60 M
SFZ_OLCS_046	-58.095205	-57.865393	1.000	Art. 76(4)(a)(ii): FOS + 60 M
SFZ_OLCS_047	-58.084683	-57.881048	1.000	Art. 76(4)(a)(ii): FOS + 60 M
SFZ_OLCS_048	-58.074643	-57.896794	1.000	Art. 76(4)(a)(ii): FOS + 60 M
SFZ_OLCS_049	-58.065089	-57.912625	1.000	Art. 76(4)(a)(ii): FOS + 60 M
SFZ_OLCS_050	-58.056024	-57.928538	0.565	Art. 76(4)(a)(ii): FOS + 60 M
SFZ_OLCS_051	-58.051183	-57.937569	n/a	Intersection 200 M Chile, Art. 76(4)(a)(ii): FOS + 60 M

1 Cox, S.C., Smith Lyttle, B., and the GeoMAP team, 2019, SCAR GeoMAP dataset, GNS Science, Lower Hutt, New Zealand, Release v.201907, <https://doi.org/10.21420/7SH7-6K05>.

2 Gómez, J., Schobbenhaus, C., and Montes, N.E., compilers, 2019, Geological Map of South America 2019. Scale 1:5000000. Commission for the Geological Map of the World (CGMW), Colombian Geological Survey, and Geological Survey of Brazil. <https://doi.org/10.32685/10.143.2019.929>.

3 Jordan, T.A., Riley, T.R., and Siddoway, C.S., 2020, The geological history and evolution of West Antarctica: Nature Reviews Earth & Environment, v. 1, p. 117–133, doi:10.1038/s43017-019-0013-6.



CONTINENTAL SHELF
NATIONAL COMMITTEE
CHILE

Partial Submission of Chile to the Commission on the Limits of the Continental Shelf
Western Continental Shelf of the Chilean Antarctic Territory



CONTINENTAL SHELF
NATIONAL COMMITTEE
CHILE

Western Continental Shelf
of the Chilean Antarctic Territory

EXECUTIVE SUMMARY