



Cook Islands

Revised Submission to the Commission on the Limits of the Continental Shelf concerning the Manihiki Plateau

Executive Summary
CKI-REV-ES-DOC

© Government of the Cook Islands 2021.

Cover Images

Lower left: The Deep Discoverer ROV deployed from the RV Okeanos Explorer on Manihiki Plateau during the EX1705 Expedition in 2017.

Centre: 3D Rendering of the Manihiki Plateau using the Shuttle Radar Topography Mission digital elevation model using Geocap Software.

Lower right: Oblique aerial photograph of Manihiki Island.

Contents

Introduction	1
Revised Submission.....	4
Commission members who provided advice during the preparation of the revised submission	4
Provisions of article 76 invoked in support of the submission	5
Existing and Outstanding Maritime Boundaries.....	5
Description of the outer limits of the continental shelf	6

This Revised Submission by the Cook Islands to the Commission on the Limits of the Continental Shelf concerning the Manihiki Plateau was prepared by representatives of the following Ministries of the Government of the Cook Islands:

- Ministry of Foreign Affairs & Immigration
- Ministry of Infrastructure and Planning

The Government of the Cook Islands acknowledges the assistance of Dr. Alain Murphy of GeoLimits Consulting in the preparation of this Revised Submission. The Government of the Cook Islands further acknowledges the support of the following organisations:

- Ocean and Maritime Geoscience, Energy and Maritime (GEM) Division, Pacific Community
- United Nations Environment Program/GRID-Arendal
- GeoScience Australia
- Australian Attorney General's Department

The Government of the Cook Islands also acknowledges financial support from the UN Trust Fund for the purpose of facilitating the preparation of submissions to the Commission on the Limits of the Continental Shelf for developing States.



Introduction

1. The Executive Summary document has been prepared as part of the revised submission by the Cook Islands to the Commission on the Limits of the Continental Shelf ('the Commission') made pursuant to paragraph 8 of Article 76 of the 1982 United Nations Convention on the Law of the Sea ('the Convention') in support of the establishment by the Cook Islands of the outer limits of the continental shelf that lies beyond 200 nautical miles (M) from the baselines from which the breadth of the territorial sea of the Cook Islands is measured (hereinafter referred to as 'the territorial sea baselines') in the region of the Manihiki Plateau.
2. The Cook Islands is a self-governing nation in free association with New Zealand, and comprises a series of islands located in the western equatorial Pacific Ocean scattered between 8° and 23° latitude S and 156° and 167° longitude W as specified in the Constitution of the Cook Islands. The islands of the Cook Islands are divided into two groups—the Northern Group and the Southern Group. The Northern group includes the islands of Manihiki, Nassau, Penryhn, Pukapuka, Rakahanga, and Suvarrow. The Southern group includes the islands of Aitutaki, Atiu, Manuae, Mauke, Mitiaro and Palmerston, together with the island of Rarotonga, which is the location of the nation's capital (Figure 1).
3. The Cook Islands is a party to the Convention, which it signed on the day it was opened for signature on 10 December 1982 and subsequently ratified on 15 February 1995. The continental shelf of the Cook Islands is defined under the *Maritime Zones Act 2018*, which establishes a formula for defining the outer limits of the continental shelf based on the relevant provisions of [Article 76 of] the Convention. The Government of the Cook Islands intends to proclaim the outer limits of the continental shelf following the making of recommendations by the Commission pursuant to paragraph 8 of Article 76.
4. On 16 April 2009, the Cook Islands submitted to the Commission on the Limits of the Continental Shelf, in accordance with Article 76, paragraph 8, of the Convention, information on the limits of the continental shelf beyond 200 nautical miles from the baselines from which the breadth of the territorial sea is measured concerning the Manihiki Plateau.
5. The subcommission for the consideration of the Submission made by the Cook Islands was established on 26 August 2011, during the plenary of the twenty-eighth session of the Commission. Following a request made by the Commission (CLCS/76 para. 40), the Delegation of the Cook Islands (hereinafter "the Delegation") submitted, on 11 September 2012, an Addendum to the Executive Summary of the Submission containing a revision of the outer limits of the continental shelf of the Cook Islands.



6. Following a series of interactions between the Delegation and the subcommission, during which a significant difference in views became evident, the subcommission approved its draft recommendations by vote on 31 July 2015, and submitted them to the Commission on 12 August 2015, for consideration and approval.
7. The Commission then amended the draft Recommendations to the Cook Islands prepared by the subcommission and approved them without a vote on 19 August 2016. Pursuant to section V. paragraph 11 (3) of Annex III to the Rules of Procedures of the Commission, the Summary of the recommendations was made public on the website of the Division of Ocean Affairs and Law of the Sea.
8. The Cook Islands has, for the purposes of preparing this revised submission, applied the relevant provisions of Article 76 of the Convention, the relevant provisions of the Rules of Procedure of the Commission on the Limits of the Continental Shelf (CLCS/40/Rev. 1) adopted by the Commission on 17 April 2008 (hereinafter referred to as 'the Rules of Procedure'), the recommendations contained in the Scientific and Technical Guidelines of the Commission on the Limits of the Continental Shelf (CLCS/11) adopted by the Commission on 13 May 1999 (hereinafter referred to as 'the Guidelines') and relevant Commission practice as elucidated through Recommendations to coastal States.

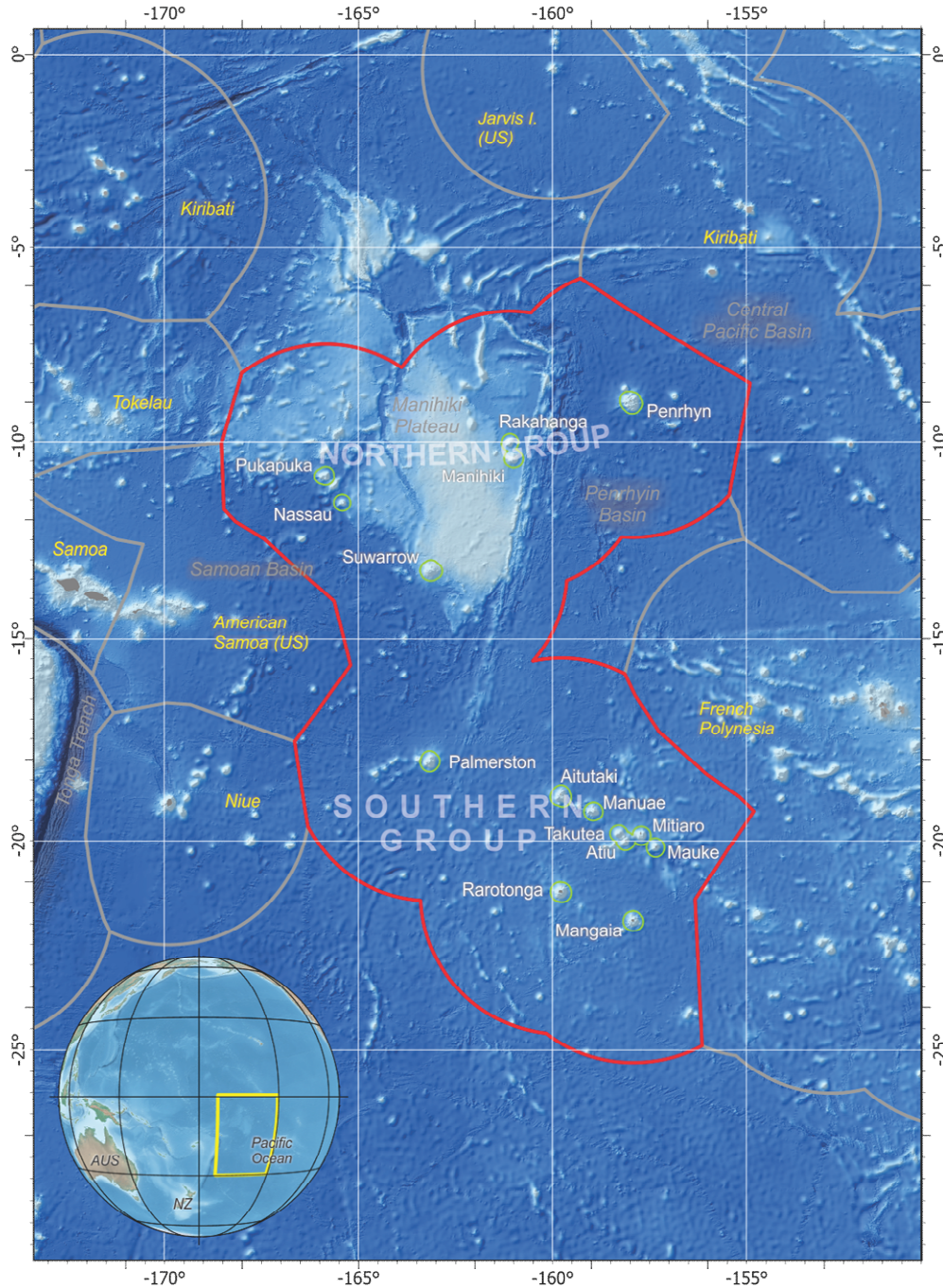


Figure 1: Map showing the location of the Cook Islands and Manihiki Plateau. The EEZ limit of the Cook Islands is shown in red, the 12 M limit for each island is shown in Green and the EEZ limits for neighbouring coastal States is shown in grey. Depiction of EEZs other than the Cook Islands is based on information available at the time of production and should not be taken to signify acceptance or endorsement by the Cook Islands.



Revised Submission

9. The Cook Islands makes this revised submission concerning the Manihiki Plateau with due regard to the Recommendations of the Commission to the Cook Islands, which were approved without a vote on 19 August 2016. The Cook Islands made clear to the Commission in its presentation of 26 August 2015, in accordance with paragraph 15.1 bis of annex III to the Rules of Procedure, as well as in the *note verbale* (108/2016-17 dated 30 November 2016) responding to the Recommendations, that it disagrees with the substance of the Recommendations and the manner in which they were arrived at and approved.
10. Article 8 of Annex II to the Convention provides that: “In the case of disagreement by the coastal State with the recommendations of the Commission, the coastal State shall, within a reasonable time, make a revised or new submission to the Commission.”
11. The Cook Islands also recalls that in its recommendations of 2016, the Commission concluded that:

“Based on the analysis of the scientific and technical data and information contained in the Submission, and the additional materials and information provided by the Delegation, the Commission is unable to recommend on the precise location of the outer limits of the continental shelf in the region of the Manihiki Plateau. The Commission recommends that Cook Islands make a new or revised submission taking into considerations the analyses and conclusions presented in these Recommendations.” (paragraph 100)
12. The Cook Islands has prepared this revised submission *de novo* utilising a comprehensive and up-to-date bathymetric and geophysical database. All analyses and calculations have been performed based on these new data, as well as recent scientific advances and understandings, which have been incorporated into the supporting material that underpins the outer limits of the continental shelf in this revised submission.

Commission members who provided advice during the preparation of the revised submission

13. Dr Philip A. Symonds, a member of the Commission from 2002-2012 and Dr. Walter Roest, a member of the Commission from 2012-2017 provided advice during the preparation of this revised submission.



Provisions of article 76 invoked in support of the submission

14. The Cook Islands has delineated its continental shelf Manihiki Plateau region in accordance with paragraphs 1, 3, 4, 5 and 7 of Article 76 of the Convention. In particular, the Cook Islands invokes article 76(4), (5) in determining the location of the outer limits in this submission. The Cook Islands has defined fixed points on arcs 60 M from the foot of the continental slope as provided for in article 76(4)(a)(ii), as well as on the distance constraint (350 M) and the depth constraint (2500 m plus 100 M) provided for in article 76(5). In accordance with article 76(7), the outer limits of the continental shelf have been delineated by fixed points connected by straight lines not exceeding 60 M in length.

Existing and Outstanding Maritime Boundaries

15. The Cook Islands has delimited maritime boundaries with five opposite or adjacent coastal States in the region— France (in respect of French Polynesia); Kiribati; New Zealand (in respect of Tokelau); Niue; and the United States (in respect of American Samoa) for those areas in which the exclusive economic zone ('EEZ') entitlements of the Cook Islands and the opposite or adjacent coastal State would otherwise overlap. The relevant international agreements have been referred to briefly below for information purposes only, as the boundaries established under these agreements are not directly relevant to the establishment of the outer limits of the continental shelf by the Cook Islands.

16. The Cook Islands and the French Republic have agreed on the delimitation of the maritime boundary between the Cook Islands and French Republic of Polynesia under the Agreement on Maritime Delimitation between the Government of the Cook Islands and the Government of the French Republic of 3 August 1990. The Treaty, which entered into force on 3 August 1990, establishes a maritime boundary composed of an equidistance line and provides for the exercise of maritime jurisdiction on that basis.

17. The Cook Islands and the United States of America have agreed on the delimitation of maritime boundaries and on the exercise of maritime jurisdiction under the Treaty between the United States of America and the Cook Islands on Friendship and Delimitation of the Maritime Boundary between the United States of America and the Cook Islands, signed on 11 June 1980. The Treaty, which entered into force on 8 September 1983, establishes a maritime boundary composed of an equidistance line between the Cook Islands and American Samoa.

18. The line of delimitation between the Cook Islands and American Samoa is approximately 566 M in length and consists of 25 turning points and terminal points. At its nearest point, the boundary is approximately 120 M from each relevant coast. The northernmost point of the boundary coincides with the



easternmost point of the maritime boundary agreed between the United States of America and New Zealand (Tokelau). The southernmost point coincides with the easternmost point of the maritime boundary agreed between the United States of America and Niue.

Description of the outer limits of the continental shelf

19. The Manihiki Plateau is located between $\sim 2^{\circ}\text{S}$ and $\sim 16^{\circ}\text{S}$ and $\sim 159^{\circ}\text{W}$ and $\sim 169^{\circ}\text{W}$ and covers 550,000 km². The Plateau occurs approximately 2 – 4 km above the adjacent basins of the Pacific sea floor (the Tokelau Basin to the west, the Penrhyn Basin to the east, the Central Pacific Basin to the north-east and the Samoan Basin to the south) which occur at depths of 4000 – 5500 m. The Manihiki Plateau is a tectonically modified large igneous province, formed during the early Cretaceous (124 – 120 Ma), that is deformed and bounded on all sides by a faulted margin.
20. The outer limits of the continental shelf in the region of the Manihiki Plateau determined by the Cook Islands in accordance with Article 76 of the Convention encloses an area of approximately 412,000 km² beyond 200 M from the Cook Islands territorial sea baselines (Figure 2). The outer limits of continental shelf in this region are divided into three segments, which are referred to as “the Western Segment”, “the Northern Segment”, and “the Eastern Segment”.
21. The outer limits of the continental shelf of the Cook Islands in the Manihiki Plateau region is defined by **414** Article 76 fixed points (Figure 3, Table 1), of which:
 - **68** are defined by arcs 60 M from the foot of the slope (Article 76, paragraph 4(a)(ii));
 - **277** are defined by the constraint line 100 M from the 2500 metre isobath (Article 76, paragraph 5);
 - **63** are defined by the constraint line 350 M from the territorial sea baselines (Article 76, paragraph 5);
 - **5** are points located on the 200 M line of an opposite or adjacent coastal State.
 - **1** is a point on the 200 M of the Cook Islands.
22. Each successive pair of Article 76 fixed points, including points where the outer limit line commences and terminates, is connected by geodesics not exceeding 60 M in length as provided for under paragraph 7 of Article 76 of the Convention.
23. The geographical coordinates of the fixed points listed in Table 1 are defined in World Geodetic System 1984 (WGS 84).

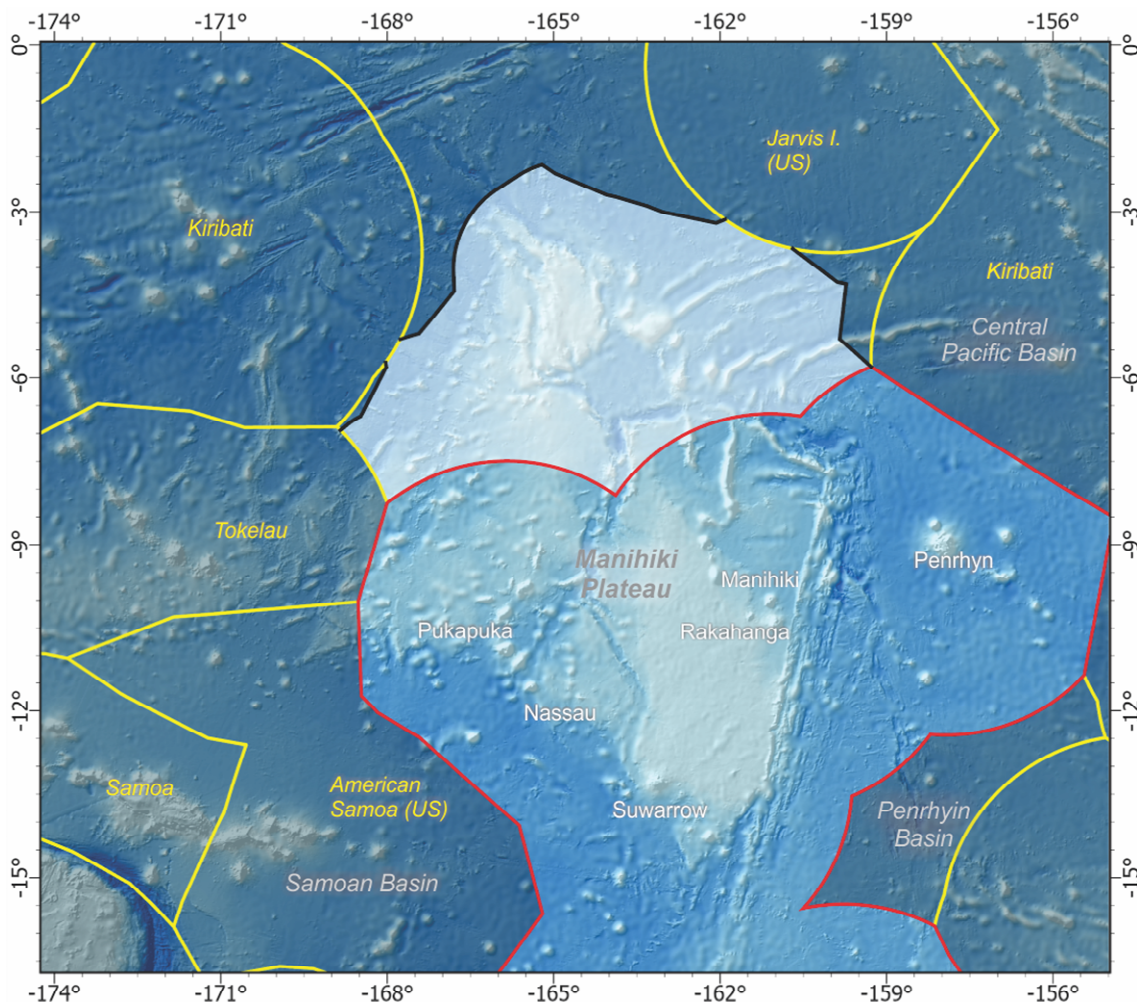


Figure 2: Map highlighting the area of the continental shelf beyond the 200 M limit of the Cook Islands in the region of the northern Manihiki Plateau. The EEZ limit of the Cook Islands is shown in red and the EEZ limits for neighbouring coastal States is shown in yellow. Depiction of EEZs other than the Cook Islands is based on information available at the time of production and should not be taken to signify acceptance or endorsement by the Cook Islands.

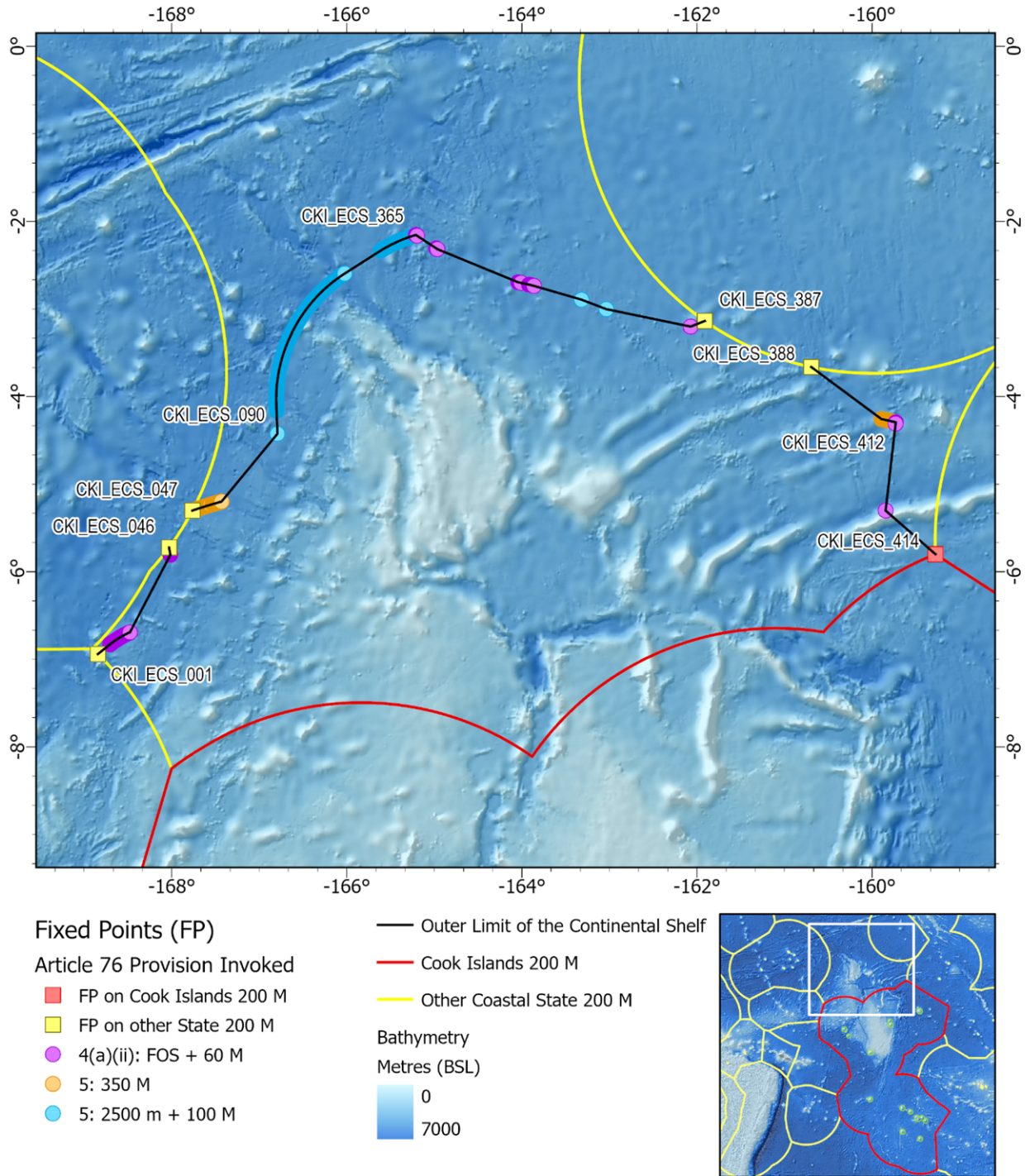


Figure 3: Map showing the outer limits of the continental shelf of the Cook Islands concerning the Manihiki Plateau.



Table 1: Fixed Points (WGS 84) delineating the Cook Islands outer limits of the continental shelf.

Fixed Point	Longitude	Latitude	Article 76 Provision	Point Distance (M)
Western Segment				
CKI_ECS_001	-168.8433069	-6.9409333	200 M	0.00
CKI_ECS_002	-168.7056011	-6.8306450	4(a)(ii): FOS + 60 M	10.53
CKI_ECS_003	-168.6990548	-6.8254200	4(a)(ii): FOS + 60 M	0.50
CKI_ECS_004	-168.6924653	-6.8202497	4(a)(ii): FOS + 60 M	0.50
CKI_ECS_005	-168.6858331	-6.8151343	4(a)(ii): FOS + 60 M	0.50
CKI_ECS_006	-168.6791586	-6.8100743	4(a)(ii): FOS + 60 M	0.50
CKI_ECS_007	-168.6724422	-6.8050699	4(a)(ii): FOS + 60 M	0.50
CKI_ECS_008	-168.6656846	-6.8001215	4(a)(ii): FOS + 60 M	0.50
CKI_ECS_009	-168.6588861	-6.7952295	4(a)(ii): FOS + 60 M	0.50
CKI_ECS_010	-168.6520471	-6.7903942	4(a)(ii): FOS + 60 M	0.50
CKI_ECS_011	-168.6451682	-6.7856160	4(a)(ii): FOS + 60 M	0.50
CKI_ECS_012	-168.6382499	-6.7808950	4(a)(ii): FOS + 60 M	0.50
CKI_ECS_013	-168.6312926	-6.7762318	4(a)(ii): FOS + 60 M	0.50
CKI_ECS_014	-168.6242968	-6.7716266	4(a)(ii): FOS + 60 M	0.50
CKI_ECS_015	-168.6172630	-6.7670797	4(a)(ii): FOS + 60 M	0.50
CKI_ECS_016	-168.6101916	-6.7625915	4(a)(ii): FOS + 60 M	0.50
CKI_ECS_017	-168.6030833	-6.7581622	4(a)(ii): FOS + 60 M	0.50
CKI_ECS_018	-168.5959383	-6.7537921	4(a)(ii): FOS + 60 M	0.50
CKI_ECS_019	-168.5887574	-6.7494816	4(a)(ii): FOS + 60 M	0.50
CKI_ECS_020	-168.5815408	-6.7452310	4(a)(ii): FOS + 60 M	0.50
CKI_ECS_021	-168.5742892	-6.7410405	4(a)(ii): FOS + 60 M	0.50
CKI_ECS_022	-168.5670031	-6.7369105	4(a)(ii): FOS + 60 M	0.50
CKI_ECS_023	-168.5596829	-6.7328412	4(a)(ii): FOS + 60 M	0.50
CKI_ECS_024	-168.5523292	-6.7288329	4(a)(ii): FOS + 60 M	0.50
CKI_ECS_025	-168.5449424	-6.7248859	4(a)(ii): FOS + 60 M	0.50
CKI_ECS_026	-168.5375232	-6.7210004	4(a)(ii): FOS + 60 M	0.50
CKI_ECS_027	-168.5300719	-6.7171768	4(a)(ii): FOS + 60 M	0.50
CKI_ECS_028	-168.5225891	-6.7134152	4(a)(ii): FOS + 60 M	0.50
CKI_ECS_029	-168.5150753	-6.7097160	4(a)(ii): FOS + 60 M	0.50
CKI_ECS_030	-168.5075311	-6.7060795	4(a)(ii): FOS + 60 M	0.50
CKI_ECS_031	-168.4999569	-6.7025057	4(a)(ii): FOS + 60 M	0.50
CKI_ECS_032	-168.4923534	-6.6989951	4(a)(ii): FOS + 60 M	0.50
CKI_ECS_033	-168.4847209	-6.6955478	4(a)(ii): FOS + 60 M	0.50
CKI_ECS_034	-168.4770601	-6.6921641	4(a)(ii): FOS + 60 M	0.50
CKI_ECS_035	-168.0152599	-5.8069235	4(a)(ii): FOS + 60 M	59.63
CKI_ECS_036	-168.0169266	-5.7987180	4(a)(ii): FOS + 60 M	0.50
CKI_ECS_037	-168.0185250	-5.7904988	4(a)(ii): FOS + 60 M	0.50



Fixed Point	Longitude	Latitude	Article 76 Provision	Point Distance (M)
CKI_ECS_038	-168.0200549	-5.7822666	4(a)(ii): FOS + 60 M	0.50
CKI_ECS_039	-168.0215162	-5.7740219	4(a)(ii): FOS + 60 M	0.50
CKI_ECS_040	-168.0229088	-5.7657653	4(a)(ii): FOS + 60 M	0.50
CKI_ECS_041	-168.0242326	-5.7574973	4(a)(ii): FOS + 60 M	0.50
CKI_ECS_042	-168.0254875	-5.7492186	4(a)(ii): FOS + 60 M	0.50
CKI_ECS_043	-168.0266736	-5.7409296	4(a)(ii): FOS + 60 M	0.50
CKI_ECS_044	-168.0277905	-5.7326311	4(a)(ii): FOS + 60 M	0.50
CKI_ECS_045	-168.0288384	-5.7243235	4(a)(ii): FOS + 60 M	0.50
CKI_ECS_046	-168.0289411	-5.7234511	200 M	0.05
Northern Segment				
CKI_ECS_047	-167.7637683	-5.3023131	200 M	0.00
CKI_ECS_048	-167.7591482	-5.3007356	5: 350 M	0.29
CKI_ECS_049	-167.7512367	-5.2980468	5: 350 M	0.50
CKI_ECS_050	-167.7433215	-5.2953692	5: 350 M	0.50
CKI_ECS_051	-167.7354025	-5.2927028	5: 350 M	0.50
CKI_ECS_052	-167.7274799	-5.2900476	5: 350 M	0.50
CKI_ECS_053	-167.7195535	-5.2874036	5: 350 M	0.50
CKI_ECS_054	-167.7116234	-5.2847708	5: 350 M	0.50
CKI_ECS_055	-167.7036897	-5.2821493	5: 350 M	0.50
CKI_ECS_056	-167.6957523	-5.2795389	5: 350 M	0.50
CKI_ECS_057	-167.6878113	-5.2769398	5: 350 M	0.50
CKI_ECS_058	-167.6798667	-5.2743519	5: 350 M	0.50
CKI_ECS_059	-167.6719185	-5.2717753	5: 350 M	0.50
CKI_ECS_060	-167.6639667	-5.2692099	5: 350 M	0.50
CKI_ECS_061	-167.6560113	-5.2666557	5: 350 M	0.50
CKI_ECS_062	-167.6517920	-5.2653061	5: 350 M	0.27
CKI_ECS_063	-167.6463819	-5.2635795	5: 350 M	0.34
CKI_ECS_064	-167.6384191	-5.2610488	5: 350 M	0.50
CKI_ECS_065	-167.6304529	-5.2585293	5: 350 M	0.50
CKI_ECS_066	-167.6224831	-5.2560211	5: 350 M	0.50
CKI_ECS_067	-167.6145098	-5.2535241	5: 350 M	0.50
CKI_ECS_068	-167.6065331	-5.2510385	5: 350 M	0.50
CKI_ECS_069	-167.5985529	-5.2485641	5: 350 M	0.50
CKI_ECS_070	-167.5905693	-5.2461010	5: 350 M	0.50
CKI_ECS_071	-167.5825822	-5.2436492	5: 350 M	0.50
CKI_ECS_072	-167.5745917	-5.2412087	5: 350 M	0.50
CKI_ECS_073	-167.5665979	-5.2387795	5: 350 M	0.50
CKI_ECS_074	-167.5586006	-5.2363616	5: 350 M	0.50
CKI_ECS_075	-167.5506000	-5.2339550	5: 350 M	0.50
CKI_ECS_076	-167.5345887	-5.2291758	5: 350 M	1.00



Fixed Point	Longitude	Latitude	Article 76 Provision	Point Distance (M)
CKI_ECS_077	-167.5265781	-5.2268032	5: 350 M	0.50
CKI_ECS_078	-167.5185642	-5.2244419	5: 350 M	0.50
CKI_ECS_079	-167.5105470	-5.2220920	5: 350 M	0.50
CKI_ECS_080	-167.5025265	-5.2197534	5: 350 M	0.50
CKI_ECS_081	-167.4945028	-5.2174261	5: 350 M	0.50
CKI_ECS_082	-167.4864758	-5.2151102	5: 350 M	0.50
CKI_ECS_083	-167.4784457	-5.2128057	5: 350 M	0.50
CKI_ECS_084	-167.4704123	-5.2105125	5: 350 M	0.50
CKI_ECS_085	-167.4623757	-5.2082307	5: 350 M	0.50
CKI_ECS_086	-167.4543359	-5.2059602	5: 350 M	0.50
CKI_ECS_087	-167.4462930	-5.2037012	5: 350 M	0.50
CKI_ECS_088	-167.4382470	-5.2014535	5: 350 M	0.50
CKI_ECS_089	-167.4301978	-5.1992171	5: 350 M	0.50
CKI_ECS_090	-166.7924151	-4.4254202	5: 2500 m + 100 M	59.95
CKI_ECS_091	-166.8008585	-4.1639544	5: 2500 m + 100 M	15.62
CKI_ECS_092	-166.8015003	-4.1556052	5: 2500 m + 100 M	0.50
CKI_ECS_093	-166.8021004	-4.1472529	5: 2500 m + 100 M	0.50
CKI_ECS_094	-166.8026590	-4.1388977	5: 2500 m + 100 M	0.50
CKI_ECS_095	-166.8031759	-4.1305398	5: 2500 m + 100 M	0.50
CKI_ECS_096	-166.8036512	-4.1221794	5: 2500 m + 100 M	0.50
CKI_ECS_097	-166.8040849	-4.1138167	5: 2500 m + 100 M	0.50
CKI_ECS_098	-166.8044769	-4.1054519	5: 2500 m + 100 M	0.50
CKI_ECS_099	-166.8048273	-4.0970853	5: 2500 m + 100 M	0.50
CKI_ECS_100	-166.8051360	-4.0887170	5: 2500 m + 100 M	0.50
CKI_ECS_101	-166.8054031	-4.0803472	5: 2500 m + 100 M	0.50
CKI_ECS_102	-166.8056284	-4.0719762	5: 2500 m + 100 M	0.50
CKI_ECS_103	-166.8058121	-4.0636042	5: 2500 m + 100 M	0.50
CKI_ECS_104	-166.8059542	-4.0552314	5: 2500 m + 100 M	0.50
CKI_ECS_105	-166.8060545	-4.0468580	5: 2500 m + 100 M	0.50
CKI_ECS_106	-166.8061132	-4.0384841	5: 2500 m + 100 M	0.50
CKI_ECS_107	-166.8061301	-4.0301101	5: 2500 m + 100 M	0.50
CKI_ECS_108	-166.8061054	-4.0217361	5: 2500 m + 100 M	0.50
CKI_ECS_109	-166.8060390	-4.0133623	5: 2500 m + 100 M	0.50
CKI_ECS_110	-166.8059310	-4.0049890	5: 2500 m + 100 M	0.50
CKI_ECS_111	-166.8057812	-3.9966163	5: 2500 m + 100 M	0.50
CKI_ECS_112	-166.8055898	-3.9882444	5: 2500 m + 100 M	0.50
CKI_ECS_113	-166.8053568	-3.9798736	5: 2500 m + 100 M	0.50
CKI_ECS_114	-166.8050820	-3.9715041	5: 2500 m + 100 M	0.50
CKI_ECS_115	-166.8047657	-3.9631361	5: 2500 m + 100 M	0.50
CKI_ECS_116	-166.8044076	-3.9547698	5: 2500 m + 100 M	0.50



Fixed Point	Longitude	Latitude	Article 76 Provision	Point Distance (M)
CKI_ECS_117	-166.8040080	-3.9464053	5: 2500 m + 100 M	0.50
CKI_ECS_118	-166.8035667	-3.9380430	5: 2500 m + 100 M	0.50
CKI_ECS_119	-166.8030839	-3.9296830	5: 2500 m + 100 M	0.50
CKI_ECS_120	-166.8025594	-3.9213255	5: 2500 m + 100 M	0.50
CKI_ECS_121	-166.8019934	-3.9129707	5: 2500 m + 100 M	0.50
CKI_ECS_122	-166.8013858	-3.9046189	5: 2500 m + 100 M	0.50
CKI_ECS_123	-166.8007367	-3.8962703	5: 2500 m + 100 M	0.50
CKI_ECS_124	-166.8000460	-3.8879250	5: 2500 m + 100 M	0.50
CKI_ECS_125	-166.7993138	-3.8795833	5: 2500 m + 100 M	0.50
CKI_ECS_126	-166.7985401	-3.8712453	5: 2500 m + 100 M	0.50
CKI_ECS_127	-166.7977250	-3.8629114	5: 2500 m + 100 M	0.50
CKI_ECS_128	-166.7968684	-3.8545816	5: 2500 m + 100 M	0.50
CKI_ECS_129	-166.7959704	-3.8462562	5: 2500 m + 100 M	0.50
CKI_ECS_130	-166.7950310	-3.8379355	5: 2500 m + 100 M	0.50
CKI_ECS_131	-166.7940502	-3.8296196	5: 2500 m + 100 M	0.50
CKI_ECS_132	-166.7930281	-3.8213086	5: 2500 m + 100 M	0.50
CKI_ECS_133	-166.7919646	-3.8130030	5: 2500 m + 100 M	0.50
CKI_ECS_134	-166.7908599	-3.8047027	5: 2500 m + 100 M	0.50
CKI_ECS_135	-166.7897138	-3.7964081	5: 2500 m + 100 M	0.50
CKI_ECS_136	-166.7885266	-3.7881194	5: 2500 m + 100 M	0.50
CKI_ECS_137	-166.7872981	-3.7798367	5: 2500 m + 100 M	0.50
CKI_ECS_138	-166.7860284	-3.7715603	5: 2500 m + 100 M	0.50
CKI_ECS_139	-166.7847176	-3.7632904	5: 2500 m + 100 M	0.50
CKI_ECS_140	-166.7833657	-3.7550272	5: 2500 m + 100 M	0.50
CKI_ECS_141	-166.7819727	-3.7467708	5: 2500 m + 100 M	0.50
CKI_ECS_142	-166.7805387	-3.7385215	5: 2500 m + 100 M	0.50
CKI_ECS_143	-166.7790637	-3.7302796	5: 2500 m + 100 M	0.50
CKI_ECS_144	-166.7775477	-3.7220451	5: 2500 m + 100 M	0.50
CKI_ECS_145	-166.7759908	-3.7138184	5: 2500 m + 100 M	0.50
CKI_ECS_146	-166.7743930	-3.7055995	5: 2500 m + 100 M	0.50
CKI_ECS_147	-166.7727544	-3.6973888	5: 2500 m + 100 M	0.50
CKI_ECS_148	-166.7710749	-3.6891864	5: 2500 m + 100 M	0.50
CKI_ECS_149	-166.7693547	-3.6809926	5: 2500 m + 100 M	0.50
CKI_ECS_150	-166.7675938	-3.6728075	5: 2500 m + 100 M	0.50
CKI_ECS_151	-166.7657922	-3.6646313	5: 2500 m + 100 M	0.50
CKI_ECS_152	-166.7639500	-3.6564643	5: 2500 m + 100 M	0.50
CKI_ECS_153	-166.7620672	-3.6483066	5: 2500 m + 100 M	0.50
CKI_ECS_154	-166.7601439	-3.6401584	5: 2500 m + 100 M	0.50
CKI_ECS_155	-166.7581801	-3.6320201	5: 2500 m + 100 M	0.50
CKI_ECS_156	-166.7561759	-3.6238916	5: 2500 m + 100 M	0.50



Fixed Point	Longitude	Latitude	Article 76 Provision	Point Distance (M)
CKI_ECS_157	-166.7541313	-3.6157734	5: 2500 m + 100 M	0.50
CKI_ECS_158	-166.7520463	-3.6076655	5: 2500 m + 100 M	0.50
CKI_ECS_159	-166.7499211	-3.5995682	5: 2500 m + 100 M	0.50
CKI_ECS_160	-166.7477557	-3.5914816	5: 2500 m + 100 M	0.50
CKI_ECS_161	-166.7455501	-3.5834060	5: 2500 m + 100 M	0.50
CKI_ECS_162	-166.7433044	-3.5753416	5: 2500 m + 100 M	0.50
CKI_ECS_163	-166.7410186	-3.5672885	5: 2500 m + 100 M	0.50
CKI_ECS_164	-166.7386929	-3.5592471	5: 2500 m + 100 M	0.50
CKI_ECS_165	-166.7363272	-3.5512173	5: 2500 m + 100 M	0.50
CKI_ECS_166	-166.7339216	-3.5431996	5: 2500 m + 100 M	0.50
CKI_ECS_167	-166.7314762	-3.5351941	5: 2500 m + 100 M	0.50
CKI_ECS_168	-166.7289911	-3.5272009	5: 2500 m + 100 M	0.50
CKI_ECS_169	-166.7264663	-3.5192203	5: 2500 m + 100 M	0.50
CKI_ECS_170	-166.7239019	-3.5112524	5: 2500 m + 100 M	0.50
CKI_ECS_171	-166.7212978	-3.5032976	5: 2500 m + 100 M	0.50
CKI_ECS_172	-166.7186543	-3.4953559	5: 2500 m + 100 M	0.50
CKI_ECS_173	-166.7159714	-3.4874276	5: 2500 m + 100 M	0.50
CKI_ECS_174	-166.7132491	-3.4795128	5: 2500 m + 100 M	0.50
CKI_ECS_175	-166.7104876	-3.4716118	5: 2500 m + 100 M	0.50
CKI_ECS_176	-166.7076868	-3.4637248	5: 2500 m + 100 M	0.50
CKI_ECS_177	-166.7048468	-3.4558519	5: 2500 m + 100 M	0.50
CKI_ECS_178	-166.7019678	-3.4479934	5: 2500 m + 100 M	0.50
CKI_ECS_179	-166.6990497	-3.4401494	5: 2500 m + 100 M	0.50
CKI_ECS_180	-166.6960928	-3.4323202	5: 2500 m + 100 M	0.50
CKI_ECS_181	-166.6930969	-3.4245059	5: 2500 m + 100 M	0.50
CKI_ECS_182	-166.6900623	-3.4167067	5: 2500 m + 100 M	0.50
CKI_ECS_183	-166.6869890	-3.4089229	5: 2500 m + 100 M	0.50
CKI_ECS_184	-166.6838771	-3.4011546	5: 2500 m + 100 M	0.50
CKI_ECS_185	-166.6807266	-3.3934020	5: 2500 m + 100 M	0.50
CKI_ECS_186	-166.6775376	-3.3856653	5: 2500 m + 100 M	0.50
CKI_ECS_187	-166.6743102	-3.3779447	5: 2500 m + 100 M	0.50
CKI_ECS_188	-166.6710446	-3.3702405	5: 2500 m + 100 M	0.50
CKI_ECS_189	-166.6677407	-3.3625527	5: 2500 m + 100 M	0.50
CKI_ECS_190	-166.6643986	-3.3548816	5: 2500 m + 100 M	0.50
CKI_ECS_191	-166.6610185	-3.3472274	5: 2500 m + 100 M	0.50
CKI_ECS_192	-166.6576004	-3.3395902	5: 2500 m + 100 M	0.50
CKI_ECS_193	-166.6541445	-3.3319703	5: 2500 m + 100 M	0.50
CKI_ECS_194	-166.6506507	-3.3243678	5: 2500 m + 100 M	0.50
CKI_ECS_195	-166.6471192	-3.3167829	5: 2500 m + 100 M	0.50
CKI_ECS_196	-166.6442072	-3.3106018	5: 2500 m + 100 M	0.41



Fixed Point	Longitude	Latitude	Article 76 Provision	Point Distance (M)
CKI_ECS_197	-166.6415183	-3.3047499	5: 2500 m + 100 M	0.38
CKI_ECS_198	-166.6379915	-3.2971629	5: 2500 m + 100 M	0.50
CKI_ECS_199	-166.6344271	-3.2895937	5: 2500 m + 100 M	0.50
CKI_ECS_200	-166.6308252	-3.2820425	5: 2500 m + 100 M	0.50
CKI_ECS_201	-166.6271857	-3.2745094	5: 2500 m + 100 M	0.50
CKI_ECS_202	-166.6235090	-3.2669947	5: 2500 m + 100 M	0.50
CKI_ECS_203	-166.6197949	-3.2594985	5: 2500 m + 100 M	0.50
CKI_ECS_204	-166.6160437	-3.2520211	5: 2500 m + 100 M	0.50
CKI_ECS_205	-166.6122554	-3.2445627	5: 2500 m + 100 M	0.50
CKI_ECS_206	-166.6084301	-3.2371233	5: 2500 m + 100 M	0.50
CKI_ECS_207	-166.6045679	-3.2297032	5: 2500 m + 100 M	0.50
CKI_ECS_208	-166.6006689	-3.2223026	5: 2500 m + 100 M	0.50
CKI_ECS_209	-166.5967332	-3.2149217	5: 2500 m + 100 M	0.50
CKI_ECS_210	-166.5927609	-3.2075606	5: 2500 m + 100 M	0.50
CKI_ECS_211	-166.5887521	-3.2002195	5: 2500 m + 100 M	0.50
CKI_ECS_212	-166.5847069	-3.1928987	5: 2500 m + 100 M	0.50
CKI_ECS_213	-166.5806254	-3.1855983	5: 2500 m + 100 M	0.50
CKI_ECS_214	-166.5765078	-3.1783184	5: 2500 m + 100 M	0.50
CKI_ECS_215	-166.5723540	-3.1710593	5: 2500 m + 100 M	0.50
CKI_ECS_216	-166.5681642	-3.1638212	5: 2500 m + 100 M	0.50
CKI_ECS_217	-166.5639386	-3.1566041	5: 2500 m + 100 M	0.50
CKI_ECS_218	-166.5596771	-3.1494084	5: 2500 m + 100 M	0.50
CKI_ECS_219	-166.5553800	-3.1422342	5: 2500 m + 100 M	0.50
CKI_ECS_220	-166.5510474	-3.1350816	5: 2500 m + 100 M	0.50
CKI_ECS_221	-166.5466793	-3.1279509	5: 2500 m + 100 M	0.50
CKI_ECS_222	-166.5422758	-3.1208421	5: 2500 m + 100 M	0.50
CKI_ECS_223	-166.5378371	-3.1137556	5: 2500 m + 100 M	0.50
CKI_ECS_224	-166.5333633	-3.1066915	5: 2500 m + 100 M	0.50
CKI_ECS_225	-166.5288545	-3.0996499	5: 2500 m + 100 M	0.50
CKI_ECS_226	-166.5243108	-3.0926310	5: 2500 m + 100 M	0.50
CKI_ECS_227	-166.5197323	-3.0856350	5: 2500 m + 100 M	0.50
CKI_ECS_228	-166.5151191	-3.0786621	5: 2500 m + 100 M	0.50
CKI_ECS_229	-166.5104713	-3.0717124	5: 2500 m + 100 M	0.50
CKI_ECS_230	-166.5057892	-3.0647862	5: 2500 m + 100 M	0.50
CKI_ECS_231	-166.5010727	-3.0578835	5: 2500 m + 100 M	0.50
CKI_ECS_232	-166.4963220	-3.0510046	5: 2500 m + 100 M	0.50
CKI_ECS_233	-166.4915372	-3.0441497	5: 2500 m + 100 M	0.50
CKI_ECS_234	-166.4867185	-3.0373188	5: 2500 m + 100 M	0.50
CKI_ECS_235	-166.4818659	-3.0305123	5: 2500 m + 100 M	0.50
CKI_ECS_236	-166.4769796	-3.0237302	5: 2500 m + 100 M	0.50



Fixed Point	Longitude	Latitude	Article 76 Provision	Point Distance (M)
CKI_ECS_237	-166.4720597	-3.0169727	5: 2500 m + 100 M	0.50
CKI_ECS_238	-166.4671063	-3.0102399	5: 2500 m + 100 M	0.50
CKI_ECS_239	-166.4621195	-3.0035322	5: 2500 m + 100 M	0.50
CKI_ECS_240	-166.4570996	-2.9968495	5: 2500 m + 100 M	0.50
CKI_ECS_241	-166.4520465	-2.9901922	5: 2500 m + 100 M	0.50
CKI_ECS_242	-166.4469605	-2.9835602	5: 2500 m + 100 M	0.50
CKI_ECS_243	-166.4418416	-2.9769539	5: 2500 m + 100 M	0.50
CKI_ECS_244	-166.4366900	-2.9703734	5: 2500 m + 100 M	0.50
CKI_ECS_245	-166.4315058	-2.9638189	5: 2500 m + 100 M	0.50
CKI_ECS_246	-166.4262891	-2.9572904	5: 2500 m + 100 M	0.50
CKI_ECS_247	-166.4210401	-2.9507882	5: 2500 m + 100 M	0.50
CKI_ECS_248	-166.4157589	-2.9443125	5: 2500 m + 100 M	0.50
CKI_ECS_249	-166.4104456	-2.9378633	5: 2500 m + 100 M	0.50
CKI_ECS_250	-166.4051004	-2.9314409	5: 2500 m + 100 M	0.50
CKI_ECS_251	-166.3997234	-2.9250454	5: 2500 m + 100 M	0.50
CKI_ECS_252	-166.3943147	-2.9186770	5: 2500 m + 100 M	0.50
CKI_ECS_253	-166.3888745	-2.9123359	5: 2500 m + 100 M	0.50
CKI_ECS_254	-166.3834029	-2.9060221	5: 2500 m + 100 M	0.50
CKI_ECS_255	-166.3779001	-2.8997359	5: 2500 m + 100 M	0.50
CKI_ECS_256	-166.3723661	-2.8934773	5: 2500 m + 100 M	0.50
CKI_ECS_257	-166.3668011	-2.8872467	5: 2500 m + 100 M	0.50
CKI_ECS_258	-166.3612053	-2.8810440	5: 2500 m + 100 M	0.50
CKI_ECS_259	-166.3555788	-2.8748696	5: 2500 m + 100 M	0.50
CKI_ECS_260	-166.3499217	-2.8687234	5: 2500 m + 100 M	0.50
CKI_ECS_261	-166.3442341	-2.8626058	5: 2500 m + 100 M	0.50
CKI_ECS_262	-166.3385164	-2.8565167	5: 2500 m + 100 M	0.50
CKI_ECS_263	-166.3327684	-2.8504565	5: 2500 m + 100 M	0.50
CKI_ECS_264	-166.3269905	-2.8444252	5: 2500 m + 100 M	0.50
CKI_ECS_265	-166.3211827	-2.8384229	5: 2500 m + 100 M	0.50
CKI_ECS_266	-166.3153452	-2.8324499	5: 2500 m + 100 M	0.50
CKI_ECS_267	-166.3094782	-2.8265063	5: 2500 m + 100 M	0.50
CKI_ECS_268	-166.3035817	-2.8205923	5: 2500 m + 100 M	0.50
CKI_ECS_269	-166.2976560	-2.8147079	5: 2500 m + 100 M	0.50
CKI_ECS_270	-166.2917011	-2.8088533	5: 2500 m + 100 M	0.50
CKI_ECS_271	-166.2857173	-2.8030287	5: 2500 m + 100 M	0.50
CKI_ECS_272	-166.2797047	-2.7972342	5: 2500 m + 100 M	0.50
CKI_ECS_273	-166.2736633	-2.7914700	5: 2500 m + 100 M	0.50
CKI_ECS_274	-166.2675935	-2.7857361	5: 2500 m + 100 M	0.50
CKI_ECS_275	-166.2614953	-2.7800329	5: 2500 m + 100 M	0.50
CKI_ECS_276	-166.2553689	-2.7743603	5: 2500 m + 100 M	0.50



Fixed Point	Longitude	Latitude	Article 76 Provision	Point Distance (M)
CKI_ECS_277	-166.2492144	-2.7687185	5: 2500 m + 100 M	0.50
CKI_ECS_278	-166.2430320	-2.7631078	5: 2500 m + 100 M	0.50
CKI_ECS_279	-166.2368219	-2.7575281	5: 2500 m + 100 M	0.50
CKI_ECS_280	-166.2305841	-2.7519797	5: 2500 m + 100 M	0.50
CKI_ECS_281	-166.2243189	-2.7464627	5: 2500 m + 100 M	0.50
CKI_ECS_282	-166.2180264	-2.7409772	5: 2500 m + 100 M	0.50
CKI_ECS_283	-166.2117068	-2.7355233	5: 2500 m + 100 M	0.50
CKI_ECS_284	-166.2053602	-2.7301013	5: 2500 m + 100 M	0.50
CKI_ECS_285	-166.1989868	-2.7247112	5: 2500 m + 100 M	0.50
CKI_ECS_286	-166.1925868	-2.7193531	5: 2500 m + 100 M	0.50
CKI_ECS_287	-166.1861602	-2.7140273	5: 2500 m + 100 M	0.50
CKI_ECS_288	-166.1797073	-2.7087338	5: 2500 m + 100 M	0.50
CKI_ECS_289	-166.1732282	-2.7034728	5: 2500 m + 100 M	0.50
CKI_ECS_290	-166.1667232	-2.6982443	5: 2500 m + 100 M	0.50
CKI_ECS_291	-166.1601922	-2.6930486	5: 2500 m + 100 M	0.50
CKI_ECS_292	-166.1536356	-2.6878858	5: 2500 m + 100 M	0.50
CKI_ECS_293	-166.1470534	-2.6827559	5: 2500 m + 100 M	0.50
CKI_ECS_294	-166.1404459	-2.6776592	5: 2500 m + 100 M	0.50
CKI_ECS_295	-166.1338132	-2.6725957	5: 2500 m + 100 M	0.50
CKI_ECS_296	-166.1271555	-2.6675655	5: 2500 m + 100 M	0.50
CKI_ECS_297	-166.1204729	-2.6625689	5: 2500 m + 100 M	0.50
CKI_ECS_298	-166.1137655	-2.6576058	5: 2500 m + 100 M	0.50
CKI_ECS_299	-166.1070337	-2.6526766	5: 2500 m + 100 M	0.50
CKI_ECS_300	-166.1002775	-2.6477811	5: 2500 m + 100 M	0.50
CKI_ECS_301	-166.0934971	-2.6429197	5: 2500 m + 100 M	0.50
CKI_ECS_302	-166.0866927	-2.6380924	5: 2500 m + 100 M	0.50
CKI_ECS_303	-166.0798644	-2.6332993	5: 2500 m + 100 M	0.50
CKI_ECS_304	-166.0730124	-2.6285405	5: 2500 m + 100 M	0.50
CKI_ECS_305	-166.0661369	-2.6238162	5: 2500 m + 100 M	0.50
CKI_ECS_306	-166.0592381	-2.6191265	5: 2500 m + 100 M	0.50
CKI_ECS_307	-166.0523161	-2.6144715	5: 2500 m + 100 M	0.50
CKI_ECS_308	-166.0453711	-2.6098513	5: 2500 m + 100 M	0.50
CKI_ECS_309	-166.0384033	-2.6052660	5: 2500 m + 100 M	0.50
CKI_ECS_310	-166.0314128	-2.6007158	5: 2500 m + 100 M	0.50
CKI_ECS_311	-166.0243998	-2.5962007	5: 2500 m + 100 M	0.50
CKI_ECS_312	-165.6131985	-2.3338865	5: 2500 m + 100 M	29.24
CKI_ECS_313	-165.6060854	-2.3295351	5: 2500 m + 100 M	0.50
CKI_ECS_314	-165.5989508	-2.3252195	5: 2500 m + 100 M	0.50
CKI_ECS_315	-165.5917949	-2.3209397	5: 2500 m + 100 M	0.50
CKI_ECS_316	-165.5846178	-2.3166960	5: 2500 m + 100 M	0.50



Fixed Point	Longitude	Latitude	Article 76 Provision	Point Distance (M)
CKI_ECS_317	-165.5774198	-2.3124884	5: 2500 m + 100 M	0.50
CKI_ECS_318	-165.5702011	-2.3083169	5: 2500 m + 100 M	0.50
CKI_ECS_319	-165.5629617	-2.3041818	5: 2500 m + 100 M	0.50
CKI_ECS_320	-165.5557019	-2.3000831	5: 2500 m + 100 M	0.50
CKI_ECS_321	-165.5484219	-2.2960209	5: 2500 m + 100 M	0.50
CKI_ECS_322	-165.5411218	-2.2919954	5: 2500 m + 100 M	0.50
CKI_ECS_323	-165.5338018	-2.2880065	5: 2500 m + 100 M	0.50
CKI_ECS_324	-165.5264622	-2.2840545	5: 2500 m + 100 M	0.50
CKI_ECS_325	-165.5191031	-2.2801394	5: 2500 m + 100 M	0.50
CKI_ECS_326	-165.5117246	-2.2762613	5: 2500 m + 100 M	0.50
CKI_ECS_327	-165.5043270	-2.2724203	5: 2500 m + 100 M	0.50
CKI_ECS_328	-165.4969104	-2.2686165	5: 2500 m + 100 M	0.50
CKI_ECS_329	-165.4894751	-2.2648500	5: 2500 m + 100 M	0.50
CKI_ECS_330	-165.4820212	-2.2611209	5: 2500 m + 100 M	0.50
CKI_ECS_331	-165.4745489	-2.2574293	5: 2500 m + 100 M	0.50
CKI_ECS_332	-165.4670583	-2.2537753	5: 2500 m + 100 M	0.50
CKI_ECS_333	-165.4595498	-2.2501590	5: 2500 m + 100 M	0.50
CKI_ECS_334	-165.4520234	-2.2465804	5: 2500 m + 100 M	0.50
CKI_ECS_335	-165.4444793	-2.2430397	5: 2500 m + 100 M	0.50
CKI_ECS_336	-165.4369178	-2.2395369	5: 2500 m + 100 M	0.50
CKI_ECS_337	-165.4293391	-2.2360721	5: 2500 m + 100 M	0.50
CKI_ECS_338	-165.4217432	-2.2326454	5: 2500 m + 100 M	0.50
CKI_ECS_339	-165.4141304	-2.2292570	5: 2500 m + 100 M	0.50
CKI_ECS_340	-165.4065009	-2.2259068	5: 2500 m + 100 M	0.50
CKI_ECS_341	-165.3988550	-2.2225950	5: 2500 m + 100 M	0.50
CKI_ECS_342	-165.3911926	-2.2193216	5: 2500 m + 100 M	0.50
CKI_ECS_343	-165.3835142	-2.2160868	5: 2500 m + 100 M	0.50
CKI_ECS_344	-165.3758198	-2.2128906	5: 2500 m + 100 M	0.50
CKI_ECS_345	-165.3681096	-2.2097330	5: 2500 m + 100 M	0.50
CKI_ECS_346	-165.3603839	-2.2066143	5: 2500 m + 100 M	0.50
CKI_ECS_347	-165.3526428	-2.2035344	5: 2500 m + 100 M	0.50
CKI_ECS_348	-165.3448866	-2.2004934	5: 2500 m + 100 M	0.50
CKI_ECS_349	-165.3371154	-2.1974914	5: 2500 m + 100 M	0.50
CKI_ECS_350	-165.3293293	-2.1945285	5: 2500 m + 100 M	0.50
CKI_ECS_351	-165.3215287	-2.1916047	5: 2500 m + 100 M	0.50
CKI_ECS_352	-165.3137137	-2.1887201	5: 2500 m + 100 M	0.50
CKI_ECS_353	-165.3058845	-2.1858749	5: 2500 m + 100 M	0.50
CKI_ECS_354	-165.2980412	-2.1830690	5: 2500 m + 100 M	0.50
CKI_ECS_355	-165.2901842	-2.1803025	5: 2500 m + 100 M	0.50
CKI_ECS_356	-165.2823135	-2.1775756	5: 2500 m + 100 M	0.50



Fixed Point	Longitude	Latitude	Article 76 Provision	Point Distance (M)
CKI_ECS_357	-165.2744294	-2.1748882	5: 2500 m + 100 M	0.50
CKI_ECS_358	-165.2665321	-2.1722404	5: 2500 m + 100 M	0.50
CKI_ECS_359	-165.2586217	-2.1696324	5: 2500 m + 100 M	0.50
CKI_ECS_360	-165.2506986	-2.1670641	5: 2500 m + 100 M	0.50
CKI_ECS_361	-165.2427627	-2.1645357	5: 2500 m + 100 M	0.50
CKI_ECS_362	-165.2348145	-2.1620471	5: 2500 m + 100 M	0.50
CKI_ECS_363	-165.2268540	-2.1595986	5: 2500 m + 100 M	0.50
CKI_ECS_364	-165.2188814	-2.1571900	5: 2500 m + 100 M	0.50
CKI_ECS_365	-165.2111179	-2.1548870	4(a)(ii): FOS + 60 M	0.49
CKI_ECS_366	-165.2047887	-2.1589305	4(a)(ii): FOS + 60 M	0.45
CKI_ECS_367	-165.1977990	-2.1634785	4(a)(ii): FOS + 60 M	0.50
CKI_ECS_368	-164.9789499	-2.3078893	4(a)(ii): FOS + 60 M	15.72
CKI_ECS_369	-164.9720224	-2.3125338	4(a)(ii): FOS + 60 M	0.50
CKI_ECS_370	-164.9651337	-2.3172362	4(a)(ii): FOS + 60 M	0.50
CKI_ECS_371	-164.0421692	-2.6954181	4(a)(ii): FOS + 60 M	59.85
CKI_ECS_372	-164.0339821	-2.6969494	4(a)(ii): FOS + 60 M	0.50
CKI_ECS_373	-164.0258079	-2.6985491	4(a)(ii): FOS + 60 M	0.50
CKI_ECS_374	-164.0176472	-2.7002173	4(a)(ii): FOS + 60 M	0.50
CKI_ECS_375	-164.0095006	-2.7019537	4(a)(ii): FOS + 60 M	0.50
CKI_ECS_376	-163.9181004	-2.7221897	4(a)(ii): FOS + 60 M	5.62
CKI_ECS_377	-163.9099812	-2.7240520	4(a)(ii): FOS + 60 M	0.50
CKI_ECS_378	-163.9018777	-2.7259822	4(a)(ii): FOS + 60 M	0.50
CKI_ECS_379	-163.8937904	-2.7279802	4(a)(ii): FOS + 60 M	0.50
CKI_ECS_380	-163.8857199	-2.7300457	4(a)(ii): FOS + 60 M	0.50
CKI_ECS_381	-163.8776668	-2.7321788	4(a)(ii): FOS + 60 M	0.50
CKI_ECS_382	-163.8696317	-2.7343793	4(a)(ii): FOS + 60 M	0.50
CKI_ECS_383	-163.8616150	-2.7366469	4(a)(ii): FOS + 60 M	0.50
CKI_ECS_384	-163.3184948	-2.8938737	5: 2500 m + 100 M	33.93
CKI_ECS_385	-163.0350125	-3.0022223	5: 2500 m + 100 M	18.21
CKI_ECS_386	-162.0722340	-3.2013453	4(a)(ii): FOS + 60 M	59.00
CKI_ECS_387	-161.9104775	-3.1369090	200 M	10.44
Eastern Segment				
CKI_ECS_388	-160.6948487	-3.6627600	200 M	0.00
CKI_ECS_389	-159.8927677	-4.2575202	5: 350 M	59.79
CKI_ECS_390	-159.8846015	-4.2592270	5: 350 M	0.50
CKI_ECS_391	-159.8764377	-4.2609454	5: 350 M	0.50
CKI_ECS_392	-159.8682763	-4.2626753	5: 350 M	0.50
CKI_ECS_393	-159.8601174	-4.2644169	5: 350 M	0.50
CKI_ECS_394	-159.8519609	-4.2661700	5: 350 M	0.50
CKI_ECS_395	-159.8438068	-4.2679346	5: 350 M	0.50



Fixed Point	Longitude	Latitude	Article 76 Provision	Point Distance (M)
CKI_ECS_396	-159.8356552	-4.2697109	5: 350 M	0.50
CKI_ECS_397	-159.8275062	-4.2714987	5: 350 M	0.50
CKI_ECS_398	-159.8193596	-4.2732980	5: 350 M	0.50
CKI_ECS_399	-159.8112155	-4.2751089	5: 350 M	0.50
CKI_ECS_400	-159.8030740	-4.2769314	5: 350 M	0.50
CKI_ECS_401	-159.7949350	-4.2787654	5: 350 M	0.50
CKI_ECS_402	-159.7867986	-4.2806109	5: 350 M	0.50
CKI_ECS_403	-159.7786648	-4.2824680	5: 350 M	0.50
CKI_ECS_404	-159.7705336	-4.2843366	5: 350 M	0.50
CKI_ECS_405	-159.7624050	-4.2862168	5: 350 M	0.50
CKI_ECS_406	-159.7542790	-4.2881085	5: 350 M	0.50
CKI_ECS_407	-159.7461557	-4.2900117	5: 350 M	0.50
CKI_ECS_408	-159.7380351	-4.2919264	5: 350 M	0.50
CKI_ECS_409	-159.7299171	-4.2938527	5: 350 M	0.50
CKI_ECS_410	-159.7281899	-4.2942651	4(a)(ii): FOS + 60 M	0.11
CKI_ECS_411	-159.7294791	-4.3013723	4(a)(ii): FOS + 60 M	0.43
CKI_ECS_412	-159.7310419	-4.3095980	4(a)(ii): FOS + 60 M	0.50
CKI_ECS_413	-159.8452016	-5.3021557	4(a)(ii): FOS + 60 M	59.66
CKI_ECS_414	-159.2757889	-5.8005056	CKI 200 M	45.23

