

Amended Submission of the Republic of Côte d'Ivoire regarding its
continental shelf beyond 200 nautical miles.



Prepared pursuant to paragraph 8 of Article 76 of the UNCLOS

Executive Summary

March 2016

TABLE OF CONTENTS

1. INTRODUCTION
2. OUTER LIMIT OF THE CONTINENTAL SHELF OF COTE D'IVOIRE
3. PROVISIONS OF ARTICLE 76 INVOKED
4. EXISTING AND OUTSTANDING MARITIME BOUNDARIES
5. ABSENCE OF DISPUTES
6. DESCRIPTION OF THE OUTER LIMITS OF THE EXTENDED CONTINENTAL SHELF
7. LIST OF GOVERNMENT MINISTRIES, DEPARTMENTS/CORPORATIONS, INTERNAL AND EXTERNAL INSTITUTIONS INVOLVED IN THE PREPARATION OF THIS SUBMISSION

1 INTRODUCTION

1.1 This amended submission to the Commission on the Limits of the Continental Shelf ('the Commission') is made by the Republic of Côte d'Ivoire ('Côte d'Ivoire') pursuant to paragraph 8 of Article 76 of the 1982 United Nations Convention on the Law of the Sea ('the Convention') in support of the establishment by Côte d'Ivoire of the outer limits of the continental shelf that lies beyond 200 nautical miles (M) from the baselines from which the breadth of the territorial sea of Côte d'Ivoire is measured (hereinafter referred to as 'the territorial sea baselines').

1.2 Côte d'Ivoire is a West African coastal state with a population of 18,373,060 bordering the Gulf of Guinea along a 520 km long coastline between Liberia and Ghana. The total land area is 322,462 km². Côte d'Ivoire is a State Party to the Convention having signed the Convention on 10 December 1982 and ratified it on 26 March 1984.

1.3 Under Article 4 of Annex II to the Convention, as supplemented by the decisions of the Eleventh and Eighteenth Meetings of the States Parties to the Convention, regarding the ten-year period established by Article 4 of Annex II to the Convention (SPLOS/72 and SPLOS/183), a coastal State for which the Convention entered into force before 13 May 1999 is required to submit particulars of the outer limits of the continental shelf to the Commission, together with supporting scientific and technical data by 13 May 2009. The submission made by Côte d'Ivoire on the 8 May 2009 satisfied that obligation.

1.4 Following the identification of additional geological and geophysical data which had not been used to prepare the submission made on the 8 May 2009, and the use of recently updated baselines, the Government of the Cote D'Ivoire has revised the data analyses for its continental margin in accordance with Article 76 of the UNCLOS and has prepared an amended description of the outer limits of its continental shelf.

1.5 Côte d'Ivoire has for the purposes of preparing this submission rigorously applied the relevant provisions of Article 76 of the Convention, the relevant provisions of the Rules of Procedure and the recommendations contained in the Scientific and Technical Guidelines of the Commission on the Limits of the Continental Shelf (CLCS/11) adopted by the Commission on 13 May 1999 (hereinafter referred to as 'the Guidelines').

1.6 In accordance with the specifications of the Commission set out in Annex III of the Rules of Procedure and paragraphs 9.1.3 to 9.1.6 of the Guidelines, the submission of Côte d'Ivoire consists of three separate parts comprising this Executive Summary, a core analytical and descriptive part ('the Main Body'), and a part containing all required supporting scientific and technical data ('supporting scientific and technical data').

2 OUTER LIMITS OF THE CONTINENTAL SHELF OF COTE D'IVOIRE

2.1 As provided for under paragraph 1 of Article 76 of the Convention, Côte d'Ivoire has a continental shelf comprising the seabed and subsoil of the submarine area that extends beyond its territorial sea throughout the natural prolongation of its land territory to the outer edge of the continental margin up to the limits provided for in paragraphs 4 to 6 of Article 76.

2.2 Paragraphs 4 to 6 of Article 76 of the Convention elaborate provisions by which a coastal State may establish the outer edge of its continental margin, and the outer limits of the continental shelf wherever they extend beyond 200M measured from the territorial sea baselines.

2.3 As set out in paragraph 7 of Article 76 of the Convention, a coastal State is to delineate the outer limits of the extended continental shelf by straight lines not exceeding 60 M in length, connecting fixed points ('fixed points'), defined by coordinates of latitude and longitude.

3 PROVISIONS OF ARTICLE 76 INVOKED

3.1 For the purposes of this submission Côte d'Ivoire invokes paragraphs 4, 5 and 7 of Article 76 of the Convention to support the submission delineating the outer limits of the continental shelf beyond 200 M from the territorial sea baselines.

4 EXISTING AND OUTSTANDING MARITIME BOUNDARIES

4.1 Côte d'Ivoire has overlapping maritime claims with adjacent States in the region, but has not signed any maritime boundary delimitation agreements with any of its neighbouring States to date.

5 ABSENCE OF DISPUTES

5.1 Article 9 of Annex II to the Convention provides that the actions of the Commission shall not prejudice matters relating to the delimitation of boundaries between States with opposite or adjacent coasts. The Commission has therefore adopted a practice, contained in Annex I of the Rules of Procedure that is intended to prevent the consideration of a submission in respect of disputed continental shelf without the consent of the parties in dispute.

5.2 The ECOWAS member States Republic of Benin, Republic of Côte d'Ivoire, Republic of Ghana, Federal Republic of Nigeria, Republic of Togo held a meeting

from 24th to 26th February 2009 in Accra. During this meeting, issues of the limit of adjacent and opposite maritime boundaries were discussed with the following result:

“Issues of the limit of adjacent/opposite boundaries shall continue to be discussed in a spirit of cooperation to arrive at a definite delimitation even after the presentation of the preliminary information /submission, Member States would therefore write “no objection” Note to the submission of their neighboring States” (Minutes of Experts Meeting of ECOWAS member States on the Outer Limits of the Continental Shelf held in Accra from 24th to 26th February 2009).

5.3 This submission of information to the Commission on the Limits of the continental shelf of Côte d'Ivoire is without prejudice to delimitation of the maritime boundaries with the Republic of Ghana, the Republic of Benin, the Federal Republic of Nigeria, and the Republic of Togo.

5.4 Further, in accordance with paragraph 2(b) of Annex I to the Rules of Procedure, Côte d'Ivoire wishes to inform the Commission that in its view, the consideration of this submission will not prejudice matters relating to the determination of boundaries between Côte d'Ivoire and any other State(s).

6 OUTER LIMIT OF THE CONTINENTAL SHELF

6.1 The outer limit of Côte d'Ivoire's continental shelf beyond 200M is defined by 146 fixed points (summarised in Table 1), of which 6 points (FP_RCI_2, FP_RCI_3, FP_RCI_4, FP_RCI_5, FP_RCI_6, and FP_RCI_7) are defined by the sediment thickness formula [Article 76, paragraph 4 (a)(i)], 123 points (FP_RCI_8 to FP_RCI_145) are defined by the distance formula [Article 76, paragraph 4 (a) (ii)], and 2 points (FP_RCI_1 and FP_RCI_146) are at points 200M from the territorial sea baselines.

6.2 These fixed points are listed in Table 1 and illustrated in Figure 1.

Table 1 - Fixed Points defining the outer limit of the continental shelf of the Cote D'Ivoire.

Fixed Point (FP_R CI_)	Latitude	Longitude	Method of construction	Distance between fixed points (M)
1	1.389111	-2.069437	200M limit	0
2	1.373980	-2.501500	1% sediment thickness	25.9785
3	1.220270	-3.162000	1% sediment thickness	40.7382
4	1.062710	-3.772870	1% sediment thickness	37.8969
5	0.991084	-4.099130	1% sediment thickness	20.0686
6	0.869675	-4.780163	1% sediment thickness	41.5669
7	0.753402	-5.460516	1% sediment thickness	41.4755
8	1.030242	-6.412955	FOS + 60M	59.5806
9	0.916924	-6.812777	FOS + 60M	24.9632
10	0.914513	-6.820744	FOS + 60M	0.5
11	0.912170	-6.828731	FOS + 60M	0.5
12	0.909893	-6.836737	FOS + 60M	0.5
13	0.907684	-6.844762	FOS + 60M	0.5
14	0.905543	-6.852805	FOS + 60M	0.5
15	0.903468	-6.860865	FOS + 60M	0.5
16	0.808548	-7.242977	FOS + 60M	23.6543
17	0.636960	-7.916666	FOS + 60M	41.7667
18	0.635021	-7.924759	FOS + 60M	0.5
19	0.633150	-7.932868	FOS + 60M	0.5
20	0.631347	-7.940992	FOS + 60M	0.5
21	0.629612	-7.949130	FOS + 60M	0.5
22	0.627946	-7.957283	FOS + 60M	0.5
23	0.626348	-7.965449	FOS + 60M	0.5
24	0.624818	-7.973628	FOS + 60M	0.5
25	0.623358	-7.981819	FOS + 60M	0.5
26	0.621966	-7.990022	FOS + 60M	0.5
27	0.620642	-7.998237	FOS + 60M	0.5
28	0.619388	-8.006462	FOS + 60M	0.5
29	0.618203	-8.014697	FOS + 60M	0.5
30	0.617087	-8.022941	FOS + 60M	0.5
31	0.616040	-8.031195	FOS + 60M	0.5
32	0.615062	-8.039457	FOS + 60M	0.5
33	0.614154	-8.047727	FOS + 60M	0.5
34	0.613315	-8.056004	FOS + 60M	0.5
35	0.612546	-8.064288	FOS + 60M	0.5
36	0.611845	-8.072577	FOS + 60M	0.5
37	0.611215	-8.080873	FOS + 60M	0.5
38	0.610654	-8.089173	FOS + 60M	0.5
39	0.610163	-8.097477	FOS + 60M	0.5

Amended submission on the continental shelf beyond 200M by the Republic of Côte d'Ivoire
(March 2016) Executive Summary

Fixed Point (FP_R CI_)	Latitude	Longitude	Method of construction	Distance between fixed points (M)
40	0.609741	-8.105786	FOS + 60M	0.5
41	0.609389	-8.114097	FOS + 60M	0.5
42	0.609107	-8.122411	FOS + 60M	0.5
43	0.608895	-8.130727	FOS + 60M	0.5
44	0.608752	-8.139045	FOS + 60M	0.5
45	0.608679	-8.147364	FOS + 60M	0.5
46	0.608676	-8.155683	FOS + 60M	0.5
47	0.608743	-8.164001	FOS + 60M	0.5
48	0.608879	-8.172319	FOS + 60M	0.5
49	0.609085	-8.180635	FOS + 60M	0.5
50	0.609361	-8.188950	FOS + 60M	0.5
51	0.609707	-8.197261	FOS + 60M	0.5
52	0.610122	-8.205570	FOS + 60M	0.5
53	0.610607	-8.213875	FOS + 60M	0.5
54	0.611161	-8.222176	FOS + 60M	0.5
55	0.611785	-8.230471	FOS + 60M	0.5
56	0.612479	-8.238762	FOS + 60M	0.5
57	0.613242	-8.247046	FOS + 60M	0.5
58	0.614075	-8.255323	FOS + 60M	0.5
59	0.614977	-8.263594	FOS + 60M	0.5
60	0.615948	-8.271857	FOS + 60M	0.5
61	0.616989	-8.280111	FOS + 60M	0.5
62	0.618099	-8.288357	FOS + 60M	0.5
63	0.619278	-8.296593	FOS + 60M	0.5
64	0.620526	-8.304819	FOS + 60M	0.5
65	0.621843	-8.313034	FOS + 60M	0.5
66	0.623229	-8.321238	FOS + 60M	0.5
67	0.624683	-8.329431	FOS + 60M	0.5
68	0.626206	-8.337611	FOS + 60M	0.5
69	0.627798	-8.345778	FOS + 60M	0.5
70	0.629458	-8.353932	FOS + 60M	0.5
71	0.631187	-8.362072	FOS + 60M	0.5
72	0.632983	-8.370197	FOS + 60M	0.5
73	0.634848	-8.378307	FOS + 60M	0.5
74	0.636781	-8.386401	FOS + 60M	0.5
75	0.638782	-8.394479	FOS + 60M	0.5
76	0.640850	-8.402540	FOS + 60M	0.5
77	0.642986	-8.410584	FOS + 60M	0.5
78	0.645189	-8.418610	FOS + 60M	0.5
79	0.647459	-8.426617	FOS + 60M	0.5
80	0.649796	-8.434606	FOS + 60M	0.5

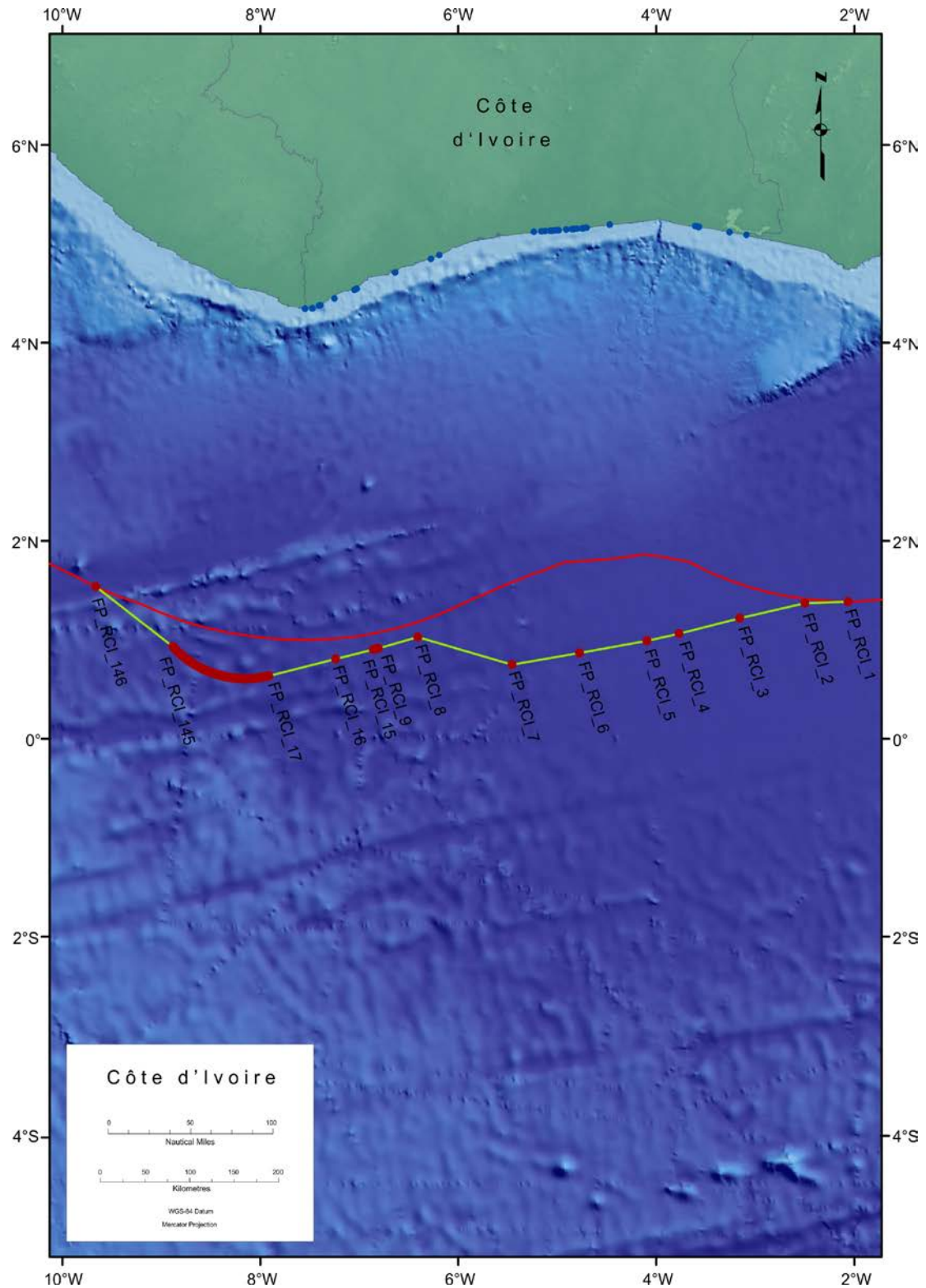
Amended submission on the continental shelf beyond 200M by the Republic of Côte d'Ivoire
(March 2016) Executive Summary

Fixed Point (FP_R CI_)	Latitude	Longitude	Method of construction	Distance between fixed points (M)
81	0.652201	-8.442575	FOS + 60M	0.5
82	0.654672	-8.450523	FOS + 60M	0.5
83	0.657210	-8.458451	FOS + 60M	0.5
84	0.659814	-8.466357	FOS + 60M	0.5
85	0.662484	-8.474242	FOS + 60M	0.5
86	0.665220	-8.482104	FOS + 60M	0.5
87	0.668023	-8.489944	FOS + 60M	0.5
88	0.670890	-8.497760	FOS + 60M	0.5
89	0.673824	-8.505552	FOS + 60M	0.5
90	0.676822	-8.513319	FOS + 60M	0.5
91	0.679886	-8.521062	FOS + 60M	0.5
92	0.683014	-8.528778	FOS + 60M	0.5
93	0.686207	-8.536469	FOS + 60M	0.5
94	0.689464	-8.544133	FOS + 60M	0.5
95	0.692786	-8.551769	FOS + 60M	0.5
96	0.696171	-8.559378	FOS + 60M	0.5
97	0.699621	-8.566959	FOS + 60M	0.5
98	0.703133	-8.574511	FOS + 60M	0.5
99	0.706709	-8.582033	FOS + 60M	0.5
100	0.710348	-8.589526	FOS + 60M	0.5
101	0.714049	-8.596988	FOS + 60M	0.5
102	0.717813	-8.604420	FOS + 60M	0.5
103	0.721639	-8.611820	FOS + 60M	0.5
104	0.725527	-8.619188	FOS + 60M	0.5
105	0.729477	-8.626524	FOS + 60M	0.5
106	0.733488	-8.633826	FOS + 60M	0.5
107	0.737560	-8.641096	FOS + 60M	0.5
108	0.741693	-8.648331	FOS + 60M	0.5
109	0.745887	-8.655532	FOS + 60M	0.5
110	0.750141	-8.662698	FOS + 60M	0.5
111	0.754454	-8.669829	FOS + 60M	0.5
112	0.758828	-8.676923	FOS + 60M	0.5
113	0.763260	-8.683981	FOS + 60M	0.5
114	0.767752	-8.691002	FOS + 60M	0.5
115	0.772303	-8.697986	FOS + 60M	0.5
116	0.776912	-8.704932	FOS + 60M	0.5
117	0.781579	-8.711840	FOS + 60M	0.5
118	0.786303	-8.718708	FOS + 60M	0.5
119	0.791086	-8.725538	FOS + 60M	0.5
120	0.795925	-8.732327	FOS + 60M	0.5
121	0.800821	-8.739077	FOS + 60M	0.5

**Amended submission on the continental shelf beyond 200M by the Republic of Côte d'Ivoire
(March 2016) Executive Summary**

Fixed Point (FP_R CI_)	Latitude	Longitude	Method of construction	Distance between fixed points (M)
122	0.805773	-8.745785	FOS + 60M	0.5
123	0.810782	-8.752453	FOS + 60M	0.5
124	0.815846	-8.759078	FOS + 60M	0.5
125	0.820966	-8.765662	FOS + 60M	0.5
126	0.826141	-8.772203	FOS + 60M	0.5
127	0.831370	-8.778701	FOS + 60M	0.5
128	0.836654	-8.785155	FOS + 60M	0.5
129	0.841992	-8.791565	FOS + 60M	0.5
130	0.847383	-8.797931	FOS + 60M	0.5
131	0.852827	-8.804253	FOS + 60M	0.5
132	0.858325	-8.810529	FOS + 60M	0.5
133	0.863874	-8.816759	FOS + 60M	0.5
134	0.869476	-8.822943	FOS + 60M	0.5
135	0.875129	-8.829081	FOS + 60M	0.5
136	0.880834	-8.835171	FOS + 60M	0.5
137	0.886590	-8.841214	FOS + 60M	0.5
138	0.892396	-8.847210	FOS + 60M	0.5
139	0.898252	-8.853157	FOS + 60M	0.5
140	0.904158	-8.859055	FOS + 60M	0.5
141	0.910113	-8.864904	FOS + 60M	0.5
142	0.916117	-8.870704	FOS + 60M	0.5
143	0.922169	-8.876454	FOS + 60M	0.5
144	0.928269	-8.882154	FOS + 60M	0.5
145	0.934417	-8.887803	FOS + 60M	0.5
146	1.538806	-9.664822	200M limit	59.0125

Figure 1 - Configuration of the outer limit of the Côte d'Ivoire continental shelf (green line). Fixed points are located by red dots, and joined by lines no longer than 60M. Relevant territorial sea basepoints are located by blue dots. The red line locates the 200M limit of Côte d'Ivoire and its neighbours.



7. LIST OF GOVERNMENT MINISTRIES, DEPARTMENTS/CORPORATIONS, INTERNAL AND EXTERNAL INSTITUTIONS INVOLVED IN THE PREPARATION OF THIS SUBMISSION

7.1 Ministries

- Office of President of the Republic of Côte d'Ivoire
- Ministry of Foreign Affairs
- Ministry of Mines & Energy
- Ministry of Defence
- Ministry of Interior
- Ministry of Environment & Water and Forest
- Ministry of Transportation
- Ministry of High Education
- Ministry of Economy & Finance
- Ministry of Halieutic Resources

7.2 Corporations

- Société National d'Operations Pétrolières de Côte d'Ivoire (PETROCI)
- Bureau National d'Etudes Techniques et de Développement (BNETD)
- Centre Universitaire de Recherche Appliquée en Télédétection (CURAT)

7.3 Institutions

- Commission Nationale de Délimitation des Frontières Maritimes de Côte d'Ivoire
- Université d'Abidjan-Cocody
- ECOWAS (CEDEAO) Commission

7.4 External Organisations

- Federal Institute for Geosciences and Natural Resources (BGR, Germany)
- Maritime Zone Solutions Limited (UK)

7.5 Commission Members who provided advice on the Submission

- Dr. Karl Hinz, ex-Commission member, was involved in advising the Government of Côte d'Ivoire during the preparation of the original submission, deposited 8 May 2009.