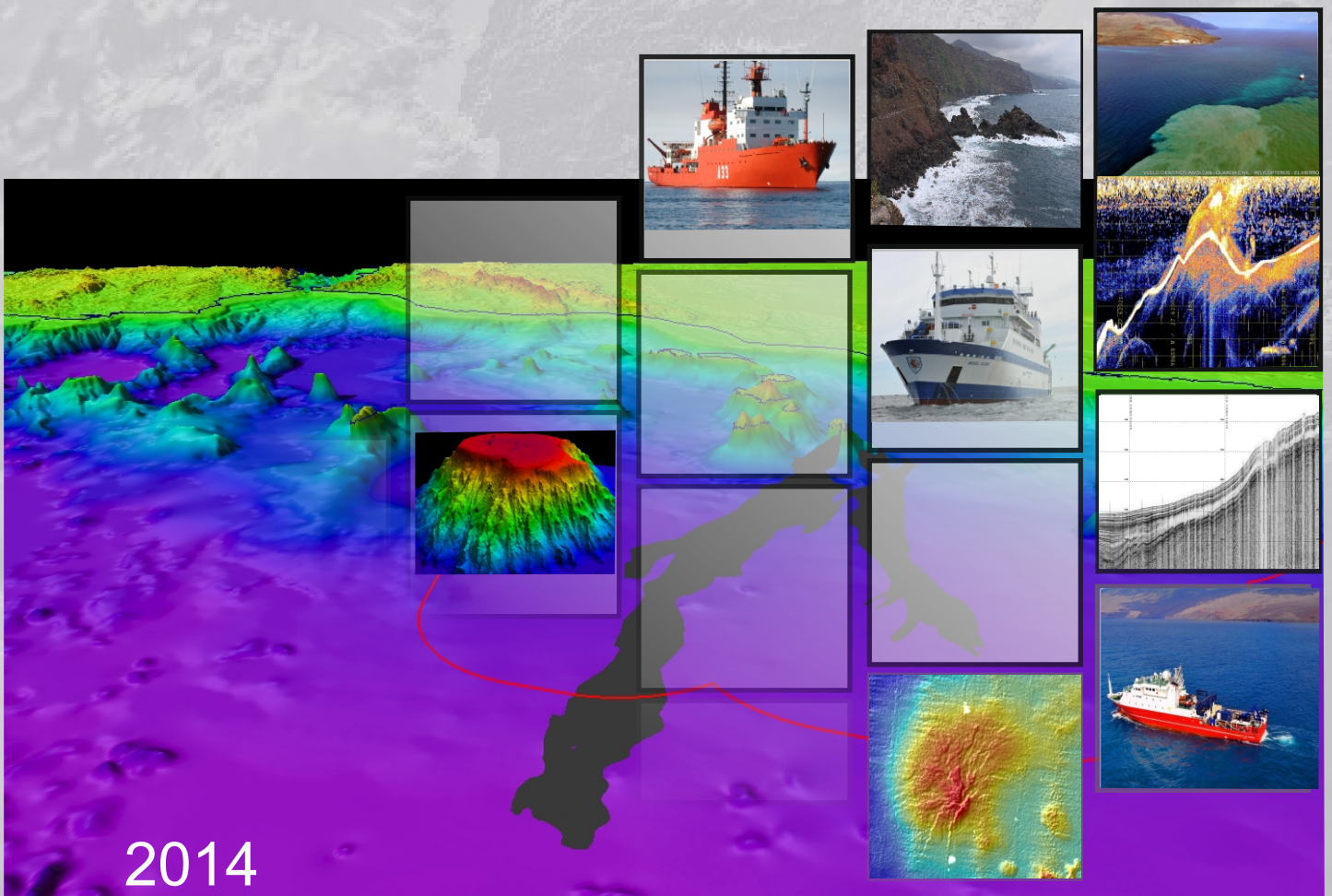




Part I. Executive Summary

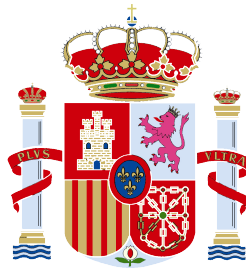
Partial Submission of Data and Information on the Limits of the Continental Shelf of Spain to the West of the Canary Islands, pursuant to Part VI and Annex II of United Nations Convention on the Law of the Sea



2014

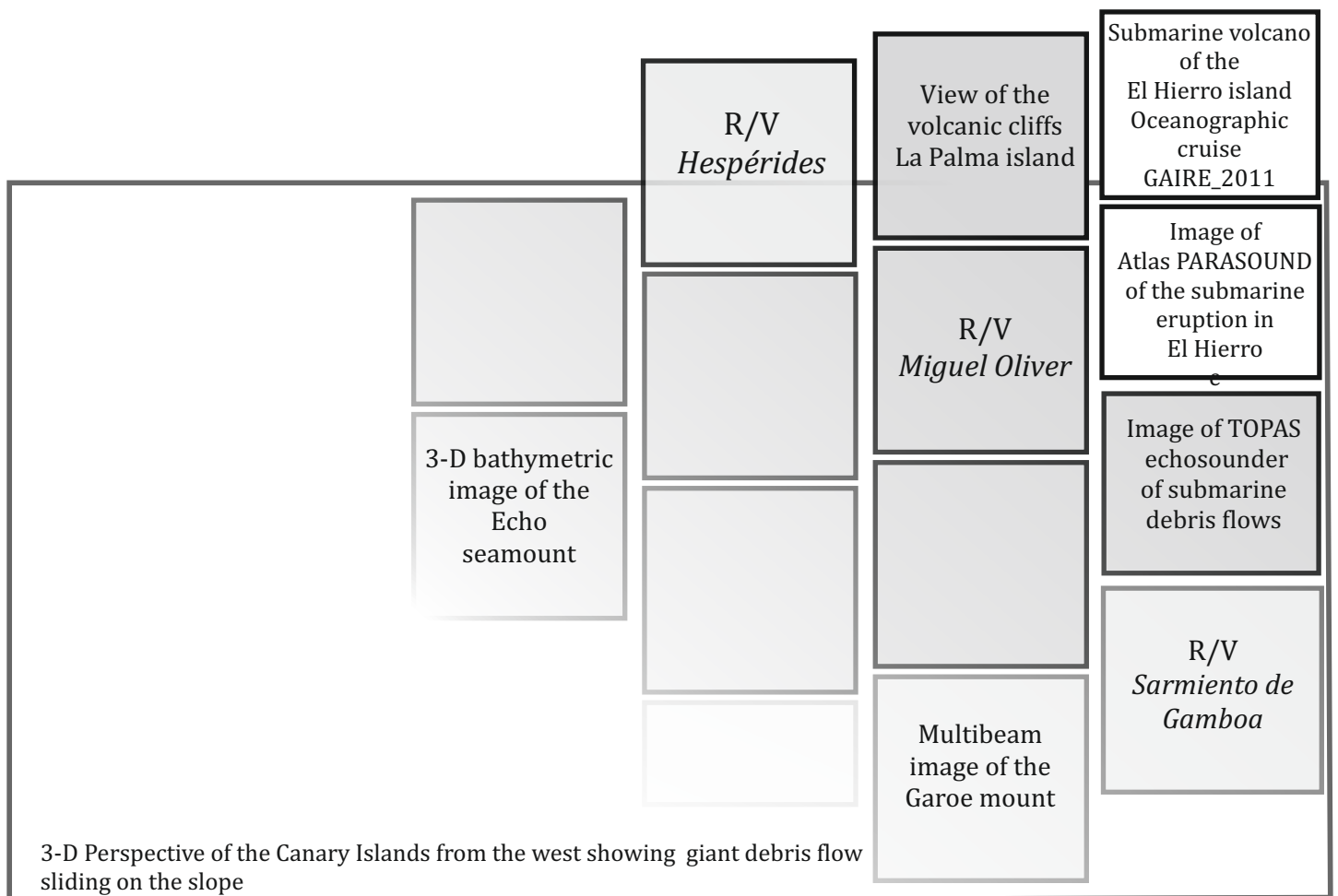
Submission to the Commission on the Limits of the
Continental Shelf through the Secretary General of
the Organization of the United Nations

English Translation of the Original Text in Spanish



Part I. Executive Summary

Partial Submission of Data and Information on the Limits of the Continental Shelf of Spain to the West of the Canary Islands, pursuant to Part VI and Annex II of United Nations Convention on the Law of the Sea



Submission to the Commission on the Limits of the
Continental Shelf through the Secretary General of
the Organization of the United Nations
English Translation of the Original Text in Spanish



TABLE OF CONTENTS

	Pág.
1. Introduction	3
2. Outer limits of the continental shelf beyond 200 nautical miles in the area to the West of the Canary Islands	9
3. Specific provisions of Article 76 invoked in support of the present Submission	10
4. Names of Commission members who provided advice during the preparation of the Submission	10
5. Absence of disputes	10
6. State bodies responsible for the preparation of the partial Submission on the continental shelf	11
7. Detailed description of the outer limits of the continental shelf beyond 200 nautical miles in the area to the West of the Canary Islands	13

ANNEXES

Annex 1. List of coordinates of the fixed points that define the outer limits of the continental shelf of Spain in the area to the West of the Canary Islands.....	18
--	-----------



FIGURES

	Pág.-
Figure 1: 3-D view of the Canary Islands (GEBCO 2003 global bathymetry).....	7
Figure 2: Layout of the oceanographic surveys carried out to the West of the Canary Islands, 1999-2013.....	8
Figure 3: Overview of the outer limits of the continental shelf of Spain beyond 200 nautical miles in the area to the West of the Canary Islands	15
Figure 4: Detail of the outer limits in the northern zone of the continental shelf of Spain beyond 200 nautical miles in the area to the West of the Canary Islands	16
Figure 5: Detail of the outer limits in the southern zone of the continental shelf of Spain beyond 200 nautical miles in the area to the West of the Canary Islands	17

TABLES

Table 1.1: Methods and length of the lines acquired in the oceanographic surveys carried out to obtain data for this Submission	6
Table 1.2: List of experts who have prepared this Submission, with their respective technical and scientific field of specialty.....	12



1. Introduction

1-1 This Submission from the Kingdom of Spain (hereinafter “Spain”) to the Commission on the Limits of the Continental Shelf (hereinafter “the Commission”) has been made pursuant to article 76 and Annex II of the 1982 United Nations Convention on the Law of the Sea (hereinafter “the Convention”), in order to establish the outer limits of the continental shelf beyond 200 nautical miles (M) in the area to the West of the Canary Islands.



This Submission is, therefore, of a partial nature, in accordance with Annex I, paragraph 3, of the Rules of Procedure of the Commission (CLCS/40/Rev.1).

Oceanographic vessel
Hespérides

1-2 Spain presented in May 2009 the Preliminary Submission and Description of the State of Preparation, pursuant to decision **SPLOS/183**, of the outer limits of the Continental Shelf of Spain in the area to the West de the Canary Islands, submitted herewith. The Preliminary Submission is publicly available on the Commission's website:

http://www.un.org/depts/los/clcs_new/submissions_files/preliminary/esp_can_2009_preliminaryinfo.pdf

1-3 With this document, Spain complied with the provisions of paragraph 1(a) of **SPLOS/183**, regarding the decisions adopted at the Eighteenth Meeting of States Parties to the Convention, presenting:

- a) Preliminary information on the outer limits beyond 200 M of the continental shelf of Spain in the area to the West of the Canary Islands,
- b) A description of the state of preparation of aforesaid Partial Submission, and



c) An indication of the planned date of registering the Submission.

1-4 Spain presented to the Commission two more Partial Submissions on the delineation of the outer limits of its continental shelf pursuant to Article 76 of the Convention:

a) The partial joint Submission by France, Ireland, United Kingdom of Great Britain and Northern Ireland and Spain (FISU) in the area of the Celtic Sea and the Bay of Biscay was deposited on 19 May 2006 at the offices of the Division for Ocean Affairs and the Law of the Sea (DOALOS), and formally presented to the Commission at the eighteenth session (**CLCS/52**). The final Recommendations were approved by the Commission on 24 March 2009 (**CLCS/62**);

b) The partial Submission in respect of the area of Galicia was registered at DOALOS on 11 May of 2009 and presented to the Commission on 7 April 2010 during the twenty-fifth session (**CLCS/66**).



Oceanographic vessel
Sarmiento de Gamboa

1-5 In accordance with the procedures described in article 76, paragraph 8, and article 4 of Annex II of the Convention, and in the Commission's Rules of Procedure (**CLCS/40/Rev. 1**), Spain has prepared this Submission with scientific and technical data that support the definition of the outer limit of the continental shelf beyond 200 M in the area to the West of the Canary Islands.

1-6 This Submission has been prepared using multibeam echosounder data, as well as parametric echosounder profiles, multichannel seismic data, dredges and core samples (**Table 1.1.**) obtained over six oceanographic surveys carried out between 2010 and 2014 (oceanographic surveys GAROE-2010, DRAGO-2011, GAIRE- 2011, ZEEE-2011, AMULEY-ZEEE-2012 and MAEC-SUBVENT-1 2013) on board the Spanish research vessels (R/V) *Hespérides*, *Sarmiento de Gamboa* and *Miguel Oliver*. These oceanographic

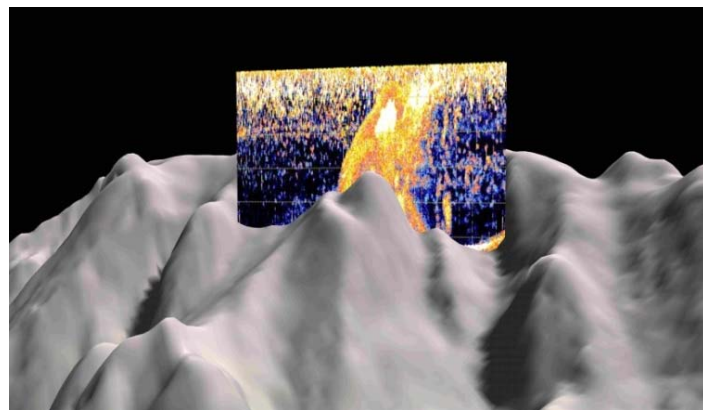
surveys were specifically designed and carried out by the Technical Group for the Extension of the Spanish Continental Shelf, composed by experts of the Geological Survey of Spain (Instituto Geológico y Minero de España, IGME), Spanish Institute of Oceanography (Instituto Español de Oceanografía, IEO) and Hydrographic Institute of the Navy (Instituto Hidrográfico de la Marina, IHM), coordinated by Dr. Luis Somoza Losada.



Oceanographic vessel Miguel Oliver

1-7 Compilation of multibeam bathymetry also included data collected in four previous hydrographic surveys (ZEEE-99, ZEEE-00, ZEEE- 2011 and ZEEE-2012) of the Research Programme of the Spanish Exclusive Economic Zone (ZEEE), carried out on board the R/V *Hespérides* and coordinated by the General Directorate on Infrastructures of the Spanish Ministry of Defence (**Fig. 1**).

1-8 A total of 68,338 km of bathymetric survey lines were carried out using different types of multibeam echosounders (Simrad EM-12, EM-120 and EM-302, Atlas HYDROSWEEP DS) and high-resolution parametric echosounders (TOPAS PS-18 and Atlas PARASOUND P-35) (**Table 1.1**). In addition, a total of 4,471 km of multichannel seismic reflection profiles were acquired using a digital streamer of 3,500 m in length, 280 channels and hydrophones distributed every 12.5 m (**Table 1.1**.) aboard the R/V *Sarmiento de Gamboa*.



3-D image of parametric echosounder and multibeam bathymetry obtained during the eruption of the submarine volcano at El Hierro Island

1-9 Moreover, this Submission had the support of three multichannel seismic profiles carried out during the CANARIAS_1988 survey, which were also used in drafting the report "*Preliminary Information and Description of the State of Preparation, pursuant to*



decision *SPLOS/183*, on the Partial Submission regarding the Outer Limits of the Continental Shelf of Spain in the Area to the West of the Canary Islands".

Table 1.1: Methods and length of the lines acquired in the oceanographic surveys carried out to obtain data for this Submission.

Oceanographic survey name	Year	Research vessel (R/V)	Type of multibeam /parametric echosounders	Length of lines (km)	Samples (type)	Seismic reflection (km)
CANARIAS_1988	1999	<i>Geco Tau</i>		1,950		1,950
ZEEE_1999 ZEEE_2000	1999 2000	<i>Hespérides</i>	Simrad EM-12 TOPAS PS-18	4,014		
GAROE_2010	2010	<i>Hespérides</i>	Simrad EM-120 TOPAS PS-18	12,449		
DRAGO_2011	2011	<i>Miguel Oliver</i>	Simrad EM-302 TOPAS PS-18	10,895	Rock dredges	
GAIRE_2011	2011	<i>Sarmiento de Gamboa</i>	Atlas HYDROSWEEP DS Atlas PARASOUND P-35	4,471		4,471
ZEEE_2011	2011	<i>Hespérides</i>	Simrad EM-120 TOPAS PS-18	13,235		
AMULEY_ ZEE_2012	2012	<i>Hespérides</i>	Simrad EM-120 TOPAS PS-18	18,054		
MAEC_SUBVENT- 1_2013	2013	<i>Hespérides</i>	Simrad EM-120 TOPAS PS-18	7,284	Gravity cores/ rock dredges	
TOTAL (km)				72,352		6,210

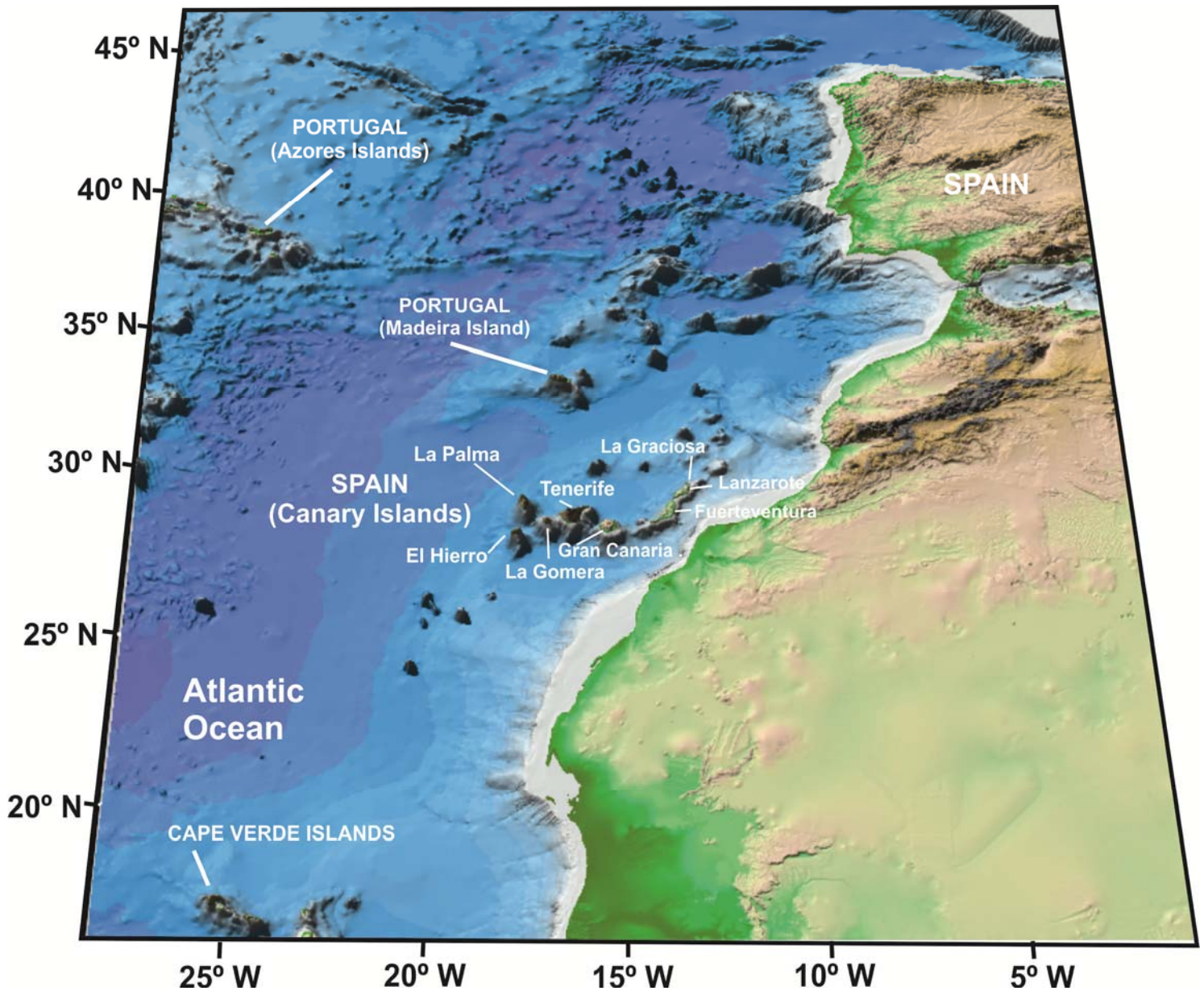


Figure 1: 3-D view of the Canary Islands (global bathymetry taken from GEBCO GDA, 2003).

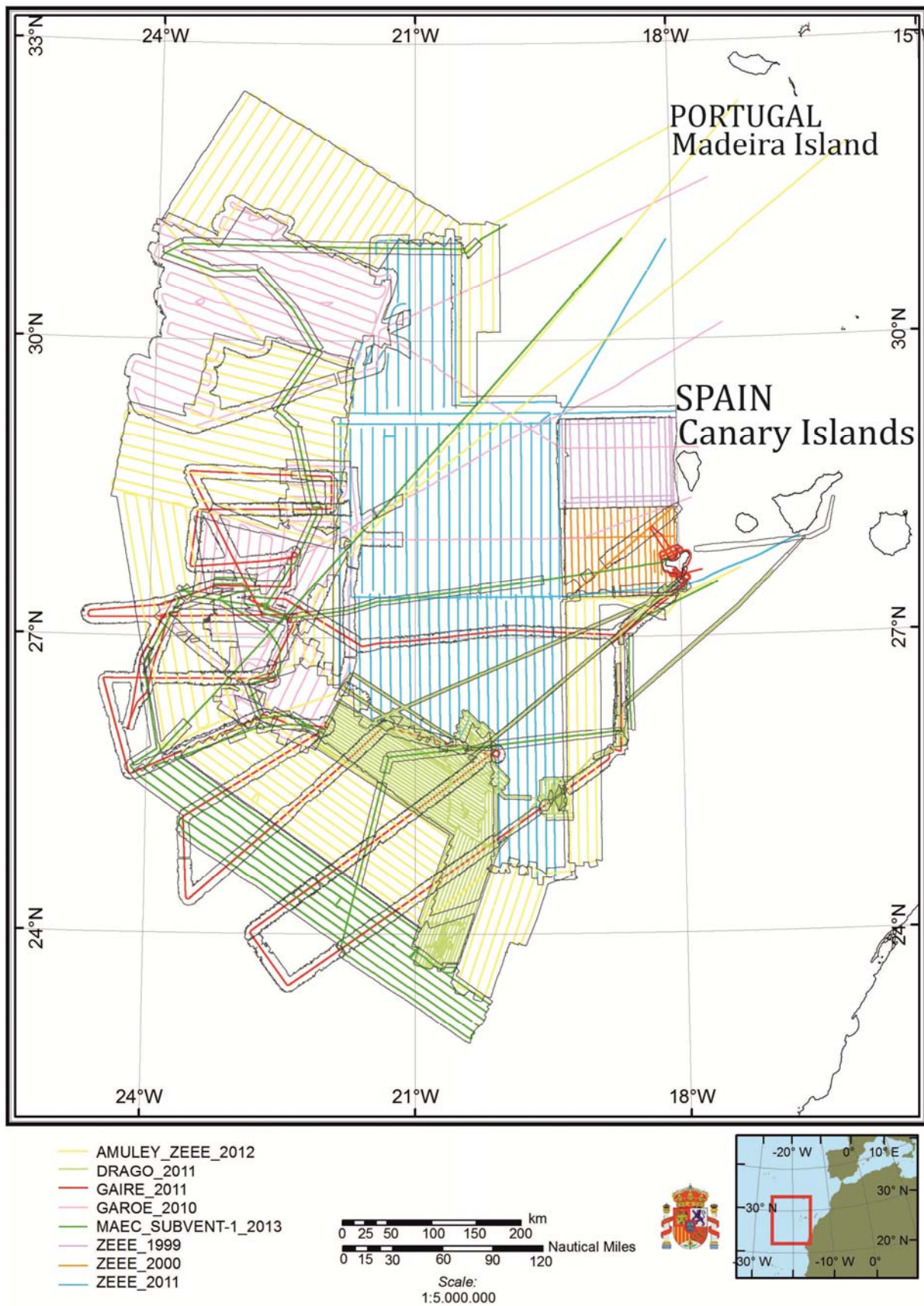


Figure 2: Layout of the oceanographic surveys carried out to the West of the Canary Islands, 1999 -2013

2. Outer limits of the continental shelf beyond 200 M in the area to the West of the Canary Islands

2-1 This partial Submission refers solely to the outer limits of the continental shelf in the area to the West of the Canary Islands (**Figs. 1 and 2**).

2-2 In accordance with the Scientific and Technical Guidelines of the Commission (**CLCS/11**), this Submission demonstrates that the submerged prolongation of the land mass extends beyond the 200 M in the area to the West of the Canary Islands, and thus the test of appurtenance is fulfilled. Therefore, Spain invokes paragraphs 4 through 10 of article 76 of the Convention to define the outer limit of the continental shelf in the area to the West of the Canary Islands.

2-3 Spain demonstrates with the scientific and technical information provided in this partial Submission that a line delineated with fixed points not more than 60M from the foot of continental slope as well as a line delineated with fixed points at each of which the thickness of sedimentary rocks is at least 1 per cent of the shortest distance from such points to the foot of the continental slope, extend beyond 200 M from the baselines from which the breadth of the territorial sea is measured.

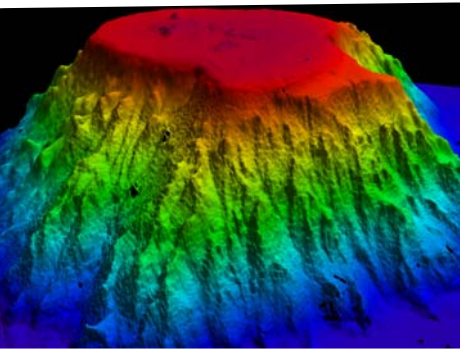


Aerial view of the submarine eruption off El Hierro Island occurred from 2011 to 2012



3. Specific provisions of Article 76 invoked in support of this Submission.

3.1. The outer limits considered in this partial Submission are delineated in accordance with the paragraphs 4, 5 and 6 of article 76 of the Convention.



Multibeam
echosounder
3-D bathymetric
model

4. Names of Commission members who provided advice during the preparation of the Submission

4.1. No member of the Commission has provided advice for this Submission.

5. Absence of disputes

5-1 Pursuant to Annex I, paragraph 5(a), of the Rules of Procedure of the Commission (CLCS/40/Rev.1), Spain wishes to inform the Commission that the area of the continental shelf to which this partial Submission refers is not the subject of any dispute with any other coastal State or States, nor does it prejudice matters relating to the delimitation of boundaries between States.



5-2 Spain wishes to inform the Commission that this partial Submission neither prejudices nor prejudices the fixing of the outer limits of the continental shelf resulting from Portugal's Submission, nor the rights of third parties which may be claimed in the future.

Sampling with gravity
corer aboard the R/V
Hespérides

6. State bodies responsible for the preparation of the partial Submission on the continental shelf

6-1 This Submission was prepared by the following state bodies:

- Ministry of Foreign Affairs and Cooperation (MAEC)
 - International Committee on Limits with France and Portugal
 - International Law Division (AJI)
- Ministry of the Economy and Competitiveness, Office of the Secretary of State for Research (MINECO):
 - Marine Geology Division, Geological Survey of Spain (IGME)
 - Spanish Institute of Oceanography (IEO)
 - Marine Technology Division (UTM-CSIC)
 - Commission for the Coordination and Monitoring of Activities of Oceanographic Vessels (COCSABO)
- Ministry of Defence (MDEF)
 - Hydrographic Institute of the Navy (IHM)

6-2 General coordination of activities was carried out by the Ministry of Foreign Affairs and Cooperation. The scientific and technical work (maps, figures, documents attached, appendices and digital data) was carried out by the Scientific and Technical Group for the Extension of the Spanish Continental Shelf, comprising scientists from the Institutes mentioned above.



VUELO CIENTÍFICO INVOLCÁN - GUARDIA CIVIL - HELICÓPTEROS - EL HIERRO

The R/V Sarmiento de Gamboa over the submarine eruption of El Hierro during the GAIRE oceanographic survey (2011)



Table 1.2: List of experts who have drafted this Submission, with their respective affiliations and field of speciality.

Expert	State bodies	Field of speciality
Dr. Luis Somoza Losada	Marine Geology Div. Geological Survey of Spain	Scientific-Technical Coordinator
Dra. Teresa Medialdea Cela	Marine Geology Div. Geological Survey of Spain	Geophysics
Dr. Ricardo León Buendía	Marine Geology Div. Geological Survey of Spain	Geomorphology
Dr. Francisco Javier González Sanz	Marine Geology Div. Geological Survey of Spain	Petrology
Dr. Juan T. Vazquez Garrido	Spanish Institute of Oceanography	Geology
Dr. Luis M. Fernández Salas	Spanish Institute of Oceanography	Bathymetry
Dra. Desiree Palomino	Spanish Institute of Oceanography	Geographic Information System (GIS)
CDR Daniel González-Aller Lacalle	Hydrographic Institute of the Navy	Hydrographic Engineer, Coordinator
CDR Juan Ramón Conforto Sesto	Hydrographic Institute of the Navy	Hydrographic Engineer. Bathymetry and geodetics
CDR Juan Rengel Ortega	Hydrographic Institute of the Navy	Hydrographer. Bathymetry and geodetics
LCDR Salvador Espinosa González Llanos	Hydrographic Institute of the Navy	Hydrographer. Bathymetry and geodetics
LTN Paloma Sevillano Sánchez	Hydrographic Institute of the Navy	Hydrographer. Bathymetry and geodetics
SCPO. Constantino Cid Álvarez	Hydrographic Institute of the Navy	Hydrographer. Caris-Lots

7. Detailed description of the outer limits of the continental shelf beyond 200 M in the area to the West of the Canary Islands

7-1 Spain delineates the outer limits of its continental shelf beyond 200 M to the West of the Canary Islands by straight lines not exceeding 60 M in length that connect 448 fixed points defined by latitude and longitude coordinates, referred to datum WGS 84, pursuant to article 76, paragraph 7, of the Convention (**Figs. 3, 4, 5** and **Annex I**).

7-2 The first fixed point of this Submission (FP-1) is located at the 200 M equidistance point between Spain and Portugal calculated from Roque de Santo Domingo (island of La Palma, Spain) and Ponta do Pargo (island of Madeira, Portugal). To calculate this point, the official coastal line published in a digital format by the Hydrographic Institute of Portugal (IHPT) was used, available at <http://www.hidrografico.pt>.

7-3 The fixed points FP-2 to FP-448 are the result of applying the distance formula or the 1% sediment thickness formula as provided for in article 76, paragraph 4, of the Convention.

7-4 Following the procedure established in the Scientific and Technical Guidelines of the Commission (**CLCS/11**), 29 foot-of-slope (FOS) points have been determined as the point of maximum change in the gradient within the region defined as the base of the continental slope. To determine these FOS points, a large multibeam bathymetric database was compiled (**Fig. 2**). The rule applicable to exceptional cases, of "evidence to the contrary", regarding the determination of points of the foot of the continental slope with other criteria different that the maximum change in gradient, as described in article 76, paragraph 4 (b), of the Convention has not been applied.

7-5 The fixed points FP-2 to FP-98, FP-99 to FP-123, FP-124 to FP-131 and FP-388 to FP-448 (**Figs. 3, 4** and **5**) are the result of applying the Hedberg formula or points placed not more than 60 M from the foot of the continental slope, in accordance with article 76, paragraph 4 (a) (ii), of the Convention.

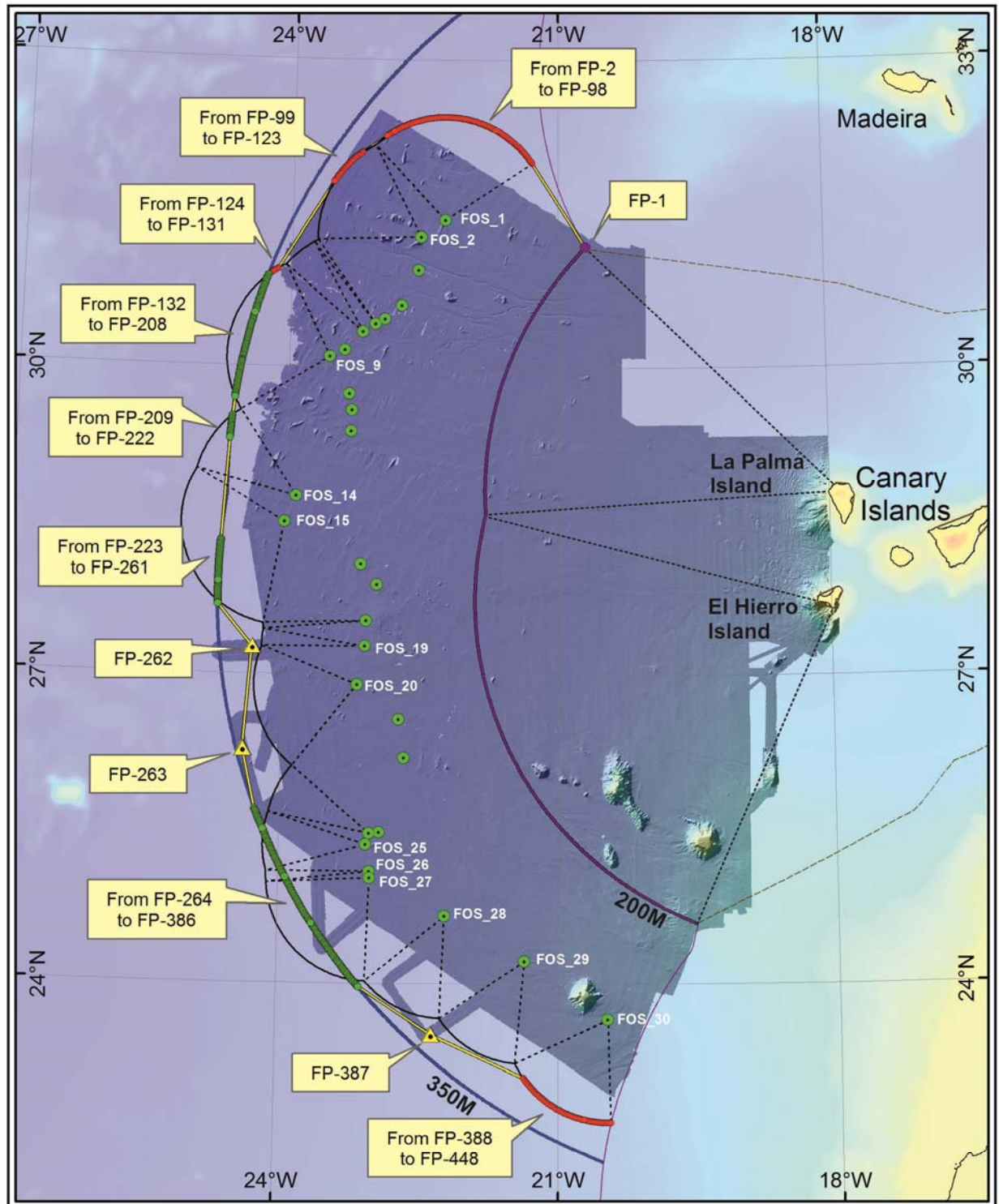


7-6 The fixed points FP-262, FP-263 and FP-387 (**Figs. 3, 4 and 5**) are the result of applying the Gardiner formula or points where the thickness of sedimentary rocks is at least 1 per cent of the shortest distance from these points to the foot of the continental slope, in accordance with article 76, paragraph 4 (a) (i), of the Convention. These fixed points have been calculated using a total of 4,736 km of multichannel seismic profiles expressly obtained for this Submission during the GAIRE-2011 oceanographic survey as well as multiple analyses of seismic velocities. Moreover, for each of these fixed points, documentation has been presented in order to demonstrate the sedimentary continuity between these fixed points and the foot of the continental slope, in accordance with paragraph 8.5.3 of the Scientific and Technical Guidelines of the Commission (**CLCS/11**).

7-7 The fixed points FP-132 to FP-208, FP-209 to FP-222, FP-223 to FP-261, FP-264 to FP-386 (**Figs. 3, 4 and 5**) are placed at a distance of 350 M from the baselines from which the breadth of the territorial sea is measured in accordance with article 76, paragraph 6, of the Convention.

7-8 The outer fixed points of this Submission defined by the combination of the two affirmative formulae rules in the area to the West of the Canary Islands does not exceed 350 M from the baselines from which the breadth of the territorial sea is measured pursuant to the constraints derived from article 76, paragraph 6, of the Convention.

7-9 The baselines applied were defined to the West of La Palma and El Hierro islands (**Fig. 3**). To the West of the El Hierro Island, the Royal Decree 2510/1977 of 5 August defines, with seven points, the straight baselines from which the breadth of the territorial sea of Spain is measured. To the West of the Island of La Palma, the baseline applied was the low-tide line, as no straight baseline has been declared. This low-tide line has been drawn through restitution techniques using photogrammetric flights.



Fixed Points on the outer limit of the Continental Shelf of Spain

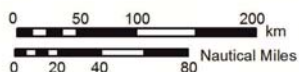
- ▲ Sediment Thickness formula point
- Foot of slope+60M formula point
- Point on the distance constraint 350M
- Point on the intersection on the 200M limits of Spain and Portugal
- Straight lines connecting fixed points

Foot of Slope

- Foot of Slope
- Foot of Slope+60M Arc
- Envelope of Arcs Control

Limit Lines

- 200M EEZ from Spain
- 200M EEZ from other coastal States
- 350M from Spain
- Equidistant Lines
- Straight baselines of Spain



Projection: Universal Transversal Mercator
Zone: 27N
Datum: WGS84

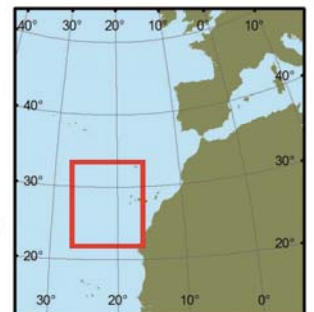
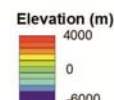
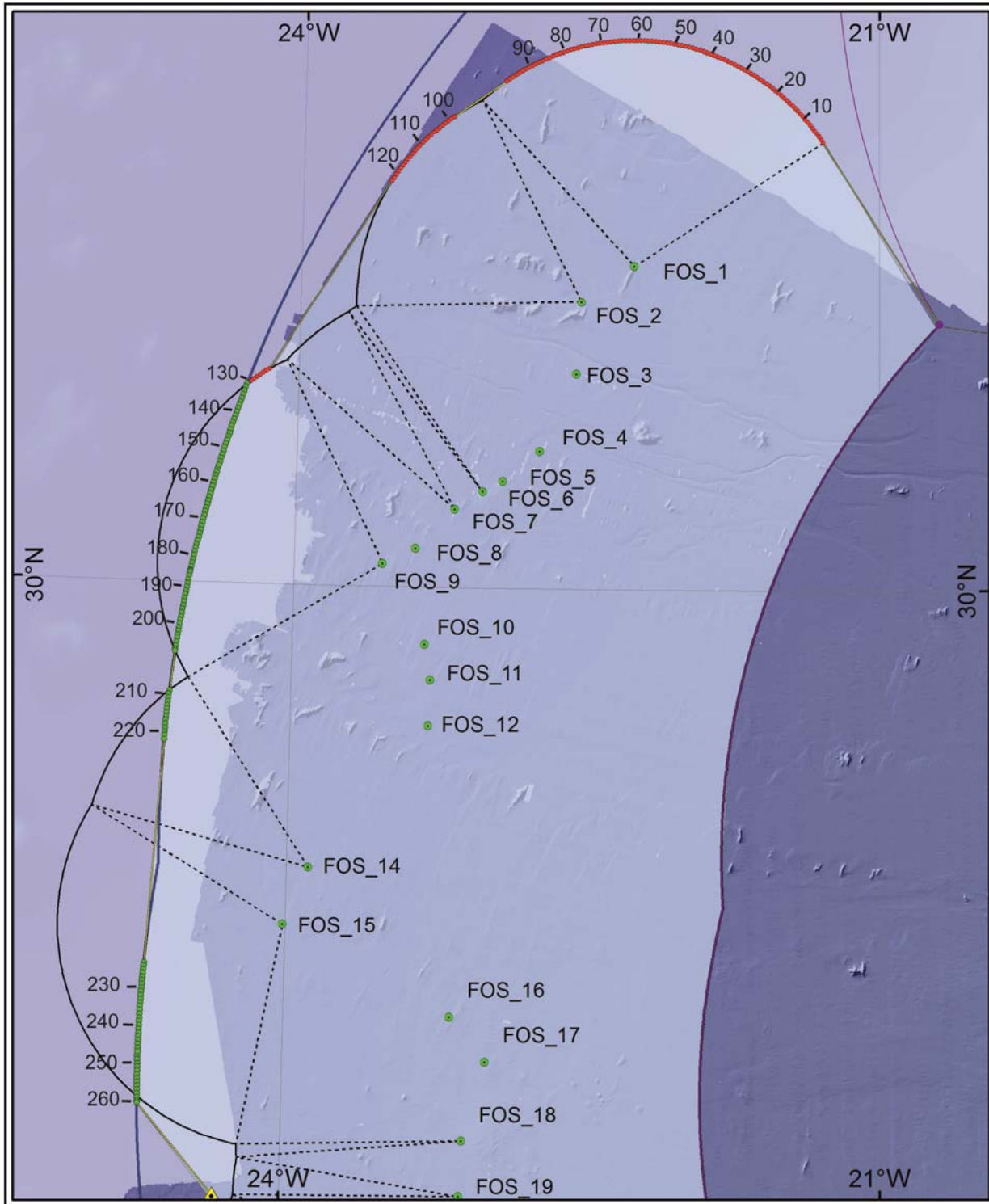


Figure 3: Overview of the outer limits of the continental shelf of Spain beyond 200 nautical miles in the area to the West of the Canary Islands.



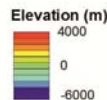
- ▲ Sediment Thickness formula point
- Foot of slope+60M formula point
- Point on the distance constraint 350M
- Point on the intersection on the 200M limits of Spain and Portugal
- Straight lines connecting fixed points

Foot of Slope

- Foot of Slope
- Foot of Slope+60M Arc
- ⋯ Envelope of Arcs Control

Limit Lines

- 200M EEZ from Spain
- 200M EEZ from other coastal States
- 350M from Spain
- Equidistant Lines
- Straight baselines of Spain



Projection: Universal Transversal Mercator
 Zone: 27N
 Datum: WGS84



Figure 4: Detail of the outer limits in the northern zone of the continental shelf of Spain beyond 200 nautical miles in the area to the West of the Canary Islands

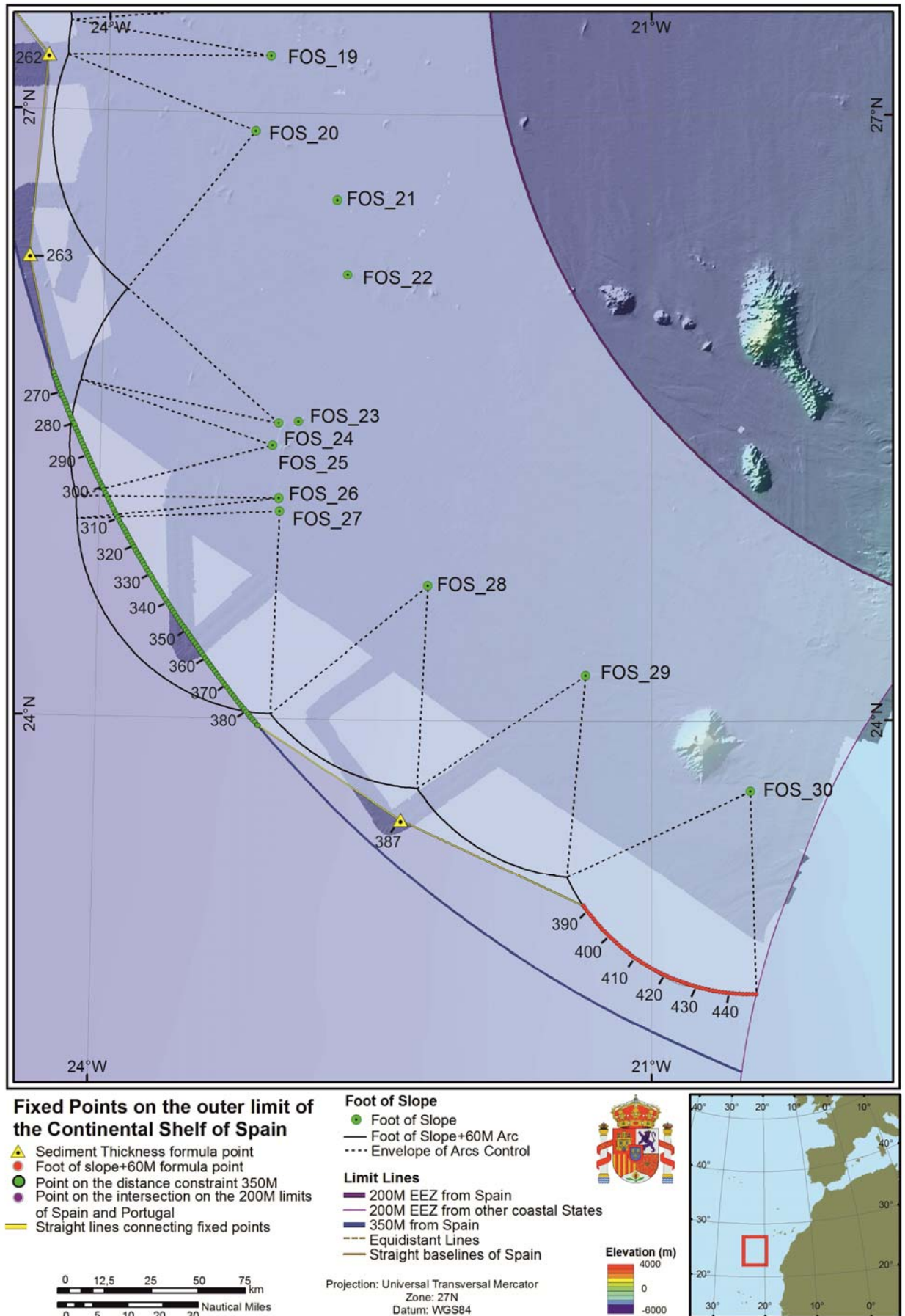


Figure 5: Detail of the outer limits in the southern zone of the continental shelf of Spain beyond 200 nautical miles in the area to the West of the Canary Islands.



Annex 1. List of coordinates of the fixed points that define the outer limits of the continental shelf of Spain in the area to the West of the Canary Islands

FP	Latitude North	Longitud West	Method, Article 76	Distance (M)
1	31.188317	20.688513	Fixed point at the 200 M equidistance between Spain and Portugal	57.543
2	31.997126	21.295132	Fixed point at 60M from FOS_1, Art.76(4) (a) (ii)	1.00
3	32.011029	21.305993	Fixed point at 60M from FOS_1, Art.76(4) (a) (ii)	1.00
4	32.024775	21.317128	Fixed point at 60M from FOS_1, Art.76(4) (a) (ii)	1.00
5	32.038359	21.328534	Fixed point at 60M from FOS_1, Art.76(4) (a) (ii)	1.00
6	32.051779	21.340207	Fixed point at 60M from FOS_1, Art.76(4) (a) (ii)	1.00
7	32.06503	21.352145	Fixed point at 60M from FOS_1, Art.76(4) (a) (ii)	1.00
8	32.078108	21.364344	Fixed point at 60M from FOS_1, Art.76(4) (a) (ii)	1.00
9	32.091011	21.376801	Fixed point at 60M from FOS_1, Art.76(4) (a) (ii)	1.00
10	32.103733	21.389512	Fixed point at 60M from FOS_1, Art.76(4) (a) (ii)	1.00
11	32.116272	21.402473	Fixed point at 60M from FOS_1, Art.76(4) (a) (ii)	1.00
12	32.128624	21.415683	Fixed point at 60M from FOS_1, Art.76(4) (a) (ii)	1.00
13	32.140786	21.429135	Fixed point at 60M from FOS_1, Art.76(4) (a) (ii)	1.00
14	32.152754	21.442828	Fixed point at 60M from FOS_1, Art.76(4) (a) (ii)	1.00
15	32.164524	21.456756	Fixed point at 60M from FOS_1, Art.76(4) (a) (ii)	1.00
16	32.176094	21.470917	Fixed point at 60M from FOS_1, Art.76(4) (a) (ii)	1.00
17	32.187460	21.485307	Fixed point at 60M from FOS_1, Art.76(4) (a) (ii)	1.00
18	32.198618	21.499920	Fixed point at 60M from FOS_1, Art.76(4) (a) (ii)	1.00
19	32.209567	21.514754	Fixed point at 60M from FOS_1, Art.76(4) (a) (ii)	1.00
20	32.220301	21.529803	Fixed point at 60M from FOS_1, Art.76(4) (a) (ii)	1.00
21	32.230819	21.545065	Fixed point at 60M from FOS_1, Art.76(4) (a) (ii)	1.00
22	32.241118	21.560534	Fixed point at 60M from FOS_1, Art.76(4) (a) (ii)	1.00
23	32.251194	21.576206	Fixed point at 60M from FOS_1, Art.76(4) (a) (ii)	1.00
24	32.261045	21.592078	Fixed point at 60M from FOS_1, Art.76(4) (a) (ii)	1.00
25	32.270668	21.608143	Fixed point at 60M from FOS_1, Art.76(4) (a) (ii)	1.00
26	32.280059	21.624399	Fixed point at 60M from FOS_1, Art.76(4) (a) (ii)	1.00



FP	Latitude North	Longitud West	Method, Article 76	Distance (M)
27	32.289218	21.64084	Fixed point at 60M from FOS_1, Art.76(4) (a) (ii)	1.00
28	32.298139	21.657461	Fixed point at 60M from FOS_1, Art.76(4) (a) (ii)	1.00
29	32.306823	21.674258	Fixed point at 60M from FOS_1, Art.76(4) (a) (ii)	1.00
30	32.315265	21.691227	Fixed point at 60M from FOS_1, Art.76(4) (a) (ii)	1.00
31	32.323463	21.708362	Fixed point at 60M from FOS_1, Art.76(4) (a) (ii)	1.00
32	32.331415	21.725658	Fixed point at 60M from FOS_1, Art.76(4) (a) (ii)	1.00
33	32.339120	21.743112	Fixed point at 60M from FOS_1, Art.76(4) (a) (ii)	1.00
34	32.346573	21.760716	Fixed point at 60M from FOS_1, Art.76(4) (a) (ii)	1.00
35	32.353774	21.778468	Fixed point at 60M from FOS_1, Art.76(4) (a) (ii)	1.00
36	32.360721	21.796361	Fixed point at 60M from FOS_1, Art.76(4) (a) (ii)	1.00
37	32.367411	21.814391	Fixed point at 60M from FOS_1, Art.76(4) (a) (ii)	1.00
38	32.373842	21.832552	Fixed point at 60M from FOS_1, Art.76(4) (a) (ii)	1.00
39	32.380013	21.85084	Fixed point at 60M from FOS_1, Art.76(4) (a) (ii)	1.00
40	32.385921	21.869248	Fixed point at 60M from FOS_1, Art.76(4) (a) (ii)	1.00
41	32.391566	21.887773	Fixed point at 60M from FOS_1, Art.76(4) (a) (ii)	1.00
42	32.396946	21.906407	Fixed point at 60M from FOS_1, Art.76(4) (a) (ii)	1.00
43	32.402058	21.925148	Fixed point at 60M from FOS_1, Art.76(4) (a) (ii)	1.00
44	32.406902	21.943988	Fixed point at 60M from FOS_1, Art.76(4) (a) (ii)	1.00
45	32.411476	21.962922	Fixed point at 60M from FOS_1, Art.76(4) (a) (ii)	1.00
46	32.415779	21.981945	Fixed point at 60M from FOS_1, Art.76(4) (a) (ii)	1.00
47	32.41981	22.001053	Fixed point at 60M from FOS_1, Art.76(4) (a) (ii)	1.00
48	32.423567	22.020238	Fixed point at 60M from FOS_1, Art.76(4) (a) (ii)	1.00
49	32.427049	22.039496	Fixed point at 60M from FOS_1, Art.76(4) (a) (ii)	1.00
50	32.430256	22.058821	Fixed point at 60M from FOS_1, Art.76(4) (a) (ii)	1.00
51	32.433186	22.078208	Fixed point at 60M from FOS_1, Art.76(4) (a) (ii)	1.00
52	32.435838	22.09765	Fixed point at 60M from FOS_1, Art.76(4) (a) (ii)	1.00
53	32.438213	22.117144	Fixed point at 60M from FOS_1, Art.76(4) (a) (ii)	1.00
54	32.440309	22.136682	Fixed point at 60M from FOS_1, Art.76(4) (a) (ii)	1.00
55	32.442125	22.156259	Fixed point at 60M from FOS_1, Art.76(4) (a) (ii)	1.00



FP	Latitude North	Longitud West	Method, Article 76	Distance (M)
56	32.443662	22.17587	Fixed point at 60M from FOS_1, Art.76(4) (a) (ii)	1.00
57	32.444918	22.195509	Fixed point at 60M from FOS_1, Art.76(4) (a) (ii)	1.00
58	32.445893	22.215171	Fixed point at 60M from FOS_1, Art.76(4) (a) (ii)	1.00
59	32.446587	22.234849	Fixed point at 60M from FOS_1, Art.76(4) (a) (ii)	1.00
60	32.447000	22.254538	Fixed point at 60M from FOS_1, Art.76(4) (a) (ii)	1.00
61	32.447132	22.273595	Fixed point at 60M from FOS_1, Art.76(4) (a) (ii)	1.00
62	32.446991	22.29329	Fixed point at 60M from FOS_1, Art.76(4) (a) (ii)	1.00
63	32.446569	22.312979	Fixed point at 60M from FOS_1, Art.76(4) (a) (ii)	1.00
64	32.445866	22.332657	Fixed point at 60M from FOS_1, Art.76(4) (a) (ii)	1.00
65	32.444881	22.352318	Fixed point at 60M from FOS_1, Art.76(4) (a) (ii)	1.00
66	32.443616	22.371956	Fixed point at 60M from FOS_1, Art.76(4) (a) (ii)	1.00
67	32.442071	22.391566	Fixed point at 60M from FOS_1, Art.76(4) (a) (ii)	1.00
68	32.440245	22.411142	Fixed point at 60M from FOS_1, Art.76(4) (a) (ii)	1.00
69	32.438141	22.430679	Fixed point at 60M from FOS_1, Art.76(4) (a) (ii)	1.00
70	32.435757	22.450171	Fixed point at 60M from FOS_1, Art.76(4) (a) (ii)	1.00
71	32.433095	22.469612	Fixed point at 60M from FOS_1, Art.76(4) (a) (ii)	1.00
72	32.430156	22.488997	Fixed point at 60M from FOS_1, Art.76(4) (a) (ii)	1.00
73	32.426940	22.508320	Fixed point at 60M from FOS_1, Art.76(4) (a) (ii)	1.00
74	32.423449	22.527575	Fixed point at 60M from FOS_1, Art.76(4) (a) (ii)	1.00
75	32.419683	22.546758	Fixed point at 60M from FOS_1, Art.76(4) (a) (ii)	1.00
76	32.415644	22.565863	Fixed point at 60M from FOS_1, Art.76(4) (a) (ii)	1.00
77	32.411332	22.584883	Fixed point at 60M from FOS_1, Art.76(4) (a) (ii)	1.00
78	32.406749	22.603815	Fixed point at 60M from FOS_1, Art.76(4) (a) (ii)	1.00
79	32.401897	22.622652	Fixed point at 60M from FOS_1, Art.76(4) (a) (ii)	1.00
80	32.396776	22.641388	Fixed point at 60M from FOS_1, Art.76(4) (a) (ii)	1.00
81	32.391388	22.660020	Fixed point at 60M from FOS_1, Art.76(4) (a) (ii)	1.00
82	32.385734	22.678541	Fixed point at 60M from FOS_1, Art.76(4) (a) (ii)	1.00
83	32.379817	22.696945	Fixed point at 60M from FOS_1, Art.76(4) (a) (ii)	1.00
84	32.373638	22.715229	Fixed point at 60M from FOS_1, Art.76(4) (a) (ii)	1.00



FP	Latitude North	Longitud West	Method, Article 76	Distance (M)
85	32.367198	22.733386	Fixed point at 60M from FOS_1, Art.76(4) (a) (ii)	1.00
86	32.360500	22.751411	Fixed point at 60M from FOS_1, Art.76(4) (a) (ii)	1.00
87	32.353545	22.769300	Fixed point at 60M from FOS_1, Art.76(4) (a) (ii)	1.00
88	32.346336	22.787047	Fixed point at 60M from FOS_1, Art.76(4) (a) (ii)	1.00
89	32.338874	22.804647	Fixed point at 60M from FOS_1, Art.76(4) (a) (ii)	1.00
90	32.331162	22.822095	Fixed point at 60M from FOS_1, Art.76(4) (a) (ii)	1.00
91	32.323201	22.839386	Fixed point at 60M from FOS_1, Art.76(4) (a) (ii)	1.00
92	32.314995	22.856516	Fixed point at 60M from FOS_1, Art.76(4) (a) (ii)	1.00
93	32.306545	22.873479	Fixed point at 60M from FOS_1, Art.76(4) (a) (ii)	1.00
94	32.297854	22.890271	Fixed point at 60M from FOS_1, Art.76(4) (a) (ii)	1.00
95	32.288925	22.906886	Fixed point at 60M from FOS_1, Art.76(4) (a) (ii)	1.00
96	32.279759	22.923321	Fixed point at 60M from FOS_1, Art.76(4) (a) (ii)	1.00
97	32.270360	22.939571	Fixed point at 60M from FOS_1, Art.76(4) (a) (ii)	1.00
98	32.260730	22.955630	Fixed point at 60M from FOS_1, Art.76(4) (a) (ii)	16.869
99	32.097699	23.225795	Fixed point at 60M from FOS_2, Art.76(4) (a) (ii)	1.00
100	32.087841	23.241632	Fixed point at 60M from FOS_2, Art.76(4) (a) (ii)	1.00
101	32.077758	23.257271	Fixed point at 60M from FOS_2, Art.76(4) (a) (ii)	1.00
102	32.067452	23.272706	Fixed point at 60M from FOS_2, Art.76(4) (a) (ii)	1.00
103	32.056927	23.287935	Fixed point at 60M from FOS_2, Art.76(4) (a) (ii)	1.00
104	32.046186	23.302951	Fixed point at 60M from FOS_2, Art.76(4) (a) (ii)	1.00
105	32.035231	23.317752	Fixed point at 60M from FOS_2, Art.76(4) (a) (ii)	1.00
106	32.024066	23.332333	Fixed point at 60M from FOS_2, Art.76(4) (a) (ii)	1.00
107	32.012694	23.346690	Fixed point at 60M from FOS_2, Art.76(4) (a) (ii)	1.00
108	32.001118	23.360819	Fixed point at 60M from FOS_2, Art.76(4) (a) (ii)	1.00
109	31.989341	23.374716	Fixed point at 60M from FOS_2, Art.76(4) (a) (ii)	1.00
110	31.977368	23.388377	Fixed point at 60M from FOS_2, Art.76(4) (a) (ii)	1.00
111	31.965200	23.401799	Fixed point at 60M from FOS_2, Art.76(4) (a) (ii)	1.00
112	31.952842	23.414977	Fixed point at 60M from FOS_2, Art.76(4) (a) (ii)	1.00
113	31.940297	23.427909	Fixed point at 60M from FOS_2, Art.76(4) (a) (ii)	1.00



FP	Latitude North	Longitud West	Method, Article 76	Distance (M)
114	31.927569	23.440590	Fixed point at 60M from FOS_2, Art.76(4) (a) (ii)	1.00
115	31.914661	23.453017	Fixed point at 60M from FOS_2, Art.76(4) (a) (ii)	1.00
116	31.901577	23.465187	Fixed point at 60M from FOS_2, Art.76(4) (a) (ii)	1.00
117	31.888321	23.477096	Fixed point at 60M from FOS_2, Art.76(4) (a) (ii)	1.00
118	31.874896	23.488741	Fixed point at 60M from FOS_2, Art.76(4) (a) (ii)	1.00
119	31.861306	23.500119	Fixed point at 60M from FOS_2, Art.76(4) (a) (ii)	1.00
120	31.847556	23.511227	Fixed point at 60M from FOS_2, Art.76(4) (a) (ii)	1.00
121	31.833648	23.522061	Fixed point at 60M from FOS_2, Art.76(4) (a) (ii)	1.00
122	31.819587	23.532619	Fixed point at 60M from FOS_2, Art.76(4) (a) (ii)	1.00
123	31.805378	23.542898	Fixed point at 60M from FOS_2, Art.76(4) (a) (ii)	59.870
124	30.953977	24.154369	Fixed point at 60M from FOS_9, Art.76(4) (a) (ii)	1.00
125	30.945050	24.170750	Fixed point at 60M from FOS_9, Art.76(4) (a) (ii)	1.00
126	30.935887	24.186954	Fixed point at 60M from FOS_9, Art.76(4) (a) (ii)	1.00
127	30.926490	24.202975	Fixed point at 60M from FOS_9, Art.76(4) (a) (ii)	1.00
128	30.916862	24.218809	Fixed point at 60M from FOS_9, Art.76(4) (a) (ii)	1.00
129	30.907006	24.234452	Fixed point at 60M from FOS_9, Art.76(4) (a) (ii)	1.00
130	30.896925	24.249899	Fixed point at 60M from FOS_9, Art.76(4) (a) (ii)	1.00
131	30.886622	24.265145	Fixed point at 60M from FOS_9, Art.76(4) (a) (ii)	1.00
132	30.885888	24.266194	Fixed point at 350 M constraint distance from 60 M + FOS_9, Art.76(5)	0.070
133	30.870916	24.272308	Fixed point at 350 M constraint distance from 60 M + FOS_9, Art.76(5)	0.950
134	30.855144	24.278687	Fixed point at 350 M constraint distance from 60 M + FOS_9, Art.76(5)	1.00
135	30.839356	24.285012	Fixed point at 350 M constraint distance from 60 M + FOS_9, Art.76(5)	1.00
136	30.823552	24.291283	Fixed point at 350 M constraint distance from 60 M + FOS_9, Art.76(5)	1.00
137	30.807732	24.297500	Fixed point at 350 M constraint distance from 60 M + FOS_9, Art.76(5)	1.00
138	30.791897	24.303663	Fixed point at 350 M constraint distance from 60 M + FOS_9, Art.76(5)	1.00
139	30.776046	24.309771	Fixed point at 350 M constraint distance from 60 M + FOS_9, Art.76(5)	1.00
140	30.760180	24.315825	Fixed point at 350 M constraint distance from 60 M + FOS_9, Art.76(5)	1.00
141	30.744299	24.321825	Fixed point at 350 M constraint distance from 60 M + FOS_9, Art.76(5)	1.00



FP	Latitude North	Longitud West	Method, Article 76	Distance (M)
142	30.728404	24.327771	Fixed point at 350 M constraint distance from 60 M + FOS_9, Art.76(5)	1.00
143	30.712493	24.333662	Fixed point at 350 M constraint distance from 60 M + FOS_9, Art.76(5)	1.00
144	30.696567	24.339498	Fixed point at 350 M constraint distance from 60 M + FOS_9, Art.76(5)	1.00
145	30.680627	24.345281	Fixed point at 350 M constraint distance from 60 M + FOS_9, Art.76(5)	1.00
146	30.664672	24.351008	Fixed point at 350 M constraint distance from 60 M + FOS_9, Art.76(5)	1.00
147	30.648703	24.356682	Fixed point at 350 M constraint distance from 60 M + FOS_9, Art.76(5)	1.00
148	30.632720	24.362301	Fixed point at 350 M constraint distance from 60 M + FOS_9, Art.76(5)	1.00
149	30.616723	24.367865	Fixed point at 350 M constraint distance from 60 M + FOS_9, Art.76(5)	1.00
150	30.600712	24.373375	Fixed point at 350 M constraint distance from 60 M + FOS_9, Art.76(5)	1.00
151	30.584687	24.378830	Fixed point at 350 M constraint distance from 60 M + FOS_9, Art.76(5)	1.00
152	30.568649	24.384231	Fixed point at 350 M constraint distance from 60 M + FOS_9, Art.76(5)	1.00
153	30.552597	24.389578	Fixed point at 350 M constraint distance from 60 M + FOS_9, Art.76(5)	1.00
154	30.536531	24.394869	Fixed point at 350 M constraint distance from 60 M + FOS_9, Art.76(5)	1.00
155	30.520453	24.400106	Fixed point at 350 M constraint distance from 60 M + FOS_9, Art.76(5)	1.00
156	30.504361	24.405289	Fixed point at 350 M constraint distance from 60 M + FOS_9, Art.76(5)	1.00
157	30.488256	24.410417	Fixed point at 350 M constraint distance from 60 M + FOS_9, Art.76(5)	1.00
158	30.472139	24.415490	Fixed point at 350 M constraint distance from 60 M + FOS_9, Art.76(5)	1.00
159	30.456009	24.420509	Fixed point at 350 M constraint distance from 60 M + FOS_9, Art.76(5)	1.00
160	30.439866	24.425472	Fixed point at 350 M constraint distance from 60 M + FOS_9, Art.76(5)	1.00
161	30.423711	24.430382	Fixed point at 350 M constraint distance from 60 M + FOS_9, Art.76(5)	1.00
162	30.407544	24.435236	Fixed point at 350 M constraint distance from 60 M + FOS_9, Art.76(5)	1.00
163	30.391364	24.440036	Fixed point at 350 M constraint distance from 60 M + FOS_9, Art.76(5)	1.00
164	30.375173	24.444781	Fixed point at 350 M constraint distance from 60 M + FOS_9, Art.76(5)	1.00
165	30.358969	24.449471	Fixed point at 350 M constraint distance from 60 M + FOS_9, Art.76(5)	1.00
166	30.342754	24.454107	Fixed point at 350 M constraint distance from 60 M + FOS_9, Art.76(5)	1.00
167	30.326528	24.458687	Fixed point at 350 M constraint distance from 60 M + FOS_9, Art.76(5)	1.00
168	30.310290	24.463213	Fixed point at 350 M constraint distance from	1.00



FP	Latitude North	Longitud West	Method, Article 76	Distance (M)
			60 M + FOS_9, Art.76(5)	
169	30.294040	24.467684	Fixed point at 350 M constraint distance from 60 M + FOS_9, Art.76(5)	1.00
170	30.277780	24.472101	Fixed point at 350 M constraint distance from 60 M + FOS_9, Art.76(5)	1.00
171	30.261508	24.476462	Fixed point at 350 M constraint distance from 60 M + FOS_9, Art.76(5)	1.00
172	30.245226	24.480769	Fixed point at 350 M constraint distance from 60 M + FOS_9, Art.76(5)	1.00
173	30.228932	24.485021	Fixed point at 350 M constraint distance from 60 M + FOS_9, Art.76(5)	1.00
174	30.212629	24.489218	Fixed point at 350 M constraint distance from 60 M + FOS_9, Art.76(5)	1.00
175	30.196314	24.493361	Fixed point at 350 M constraint distance from 60 M + FOS_9, Art.76(5)	1.00
176	30.179990	24.497448	Fixed point at 350 M constraint distance from 60 M + FOS_9, Art.76(5)	1.00
177	30.163655	24.501480	Fixed point at 350 M constraint distance from 60 M + FOS_9, Art.76(5)	1.00
178	30.147310	24.505458	Fixed point at 350 M constraint distance from 60 M + FOS_9, Art.76(5)	1.00
179	30.130955	24.509381	Fixed point at 350 M constraint distance from 60 M + FOS_9, Art.76(5)	1.00
180	30.114590	24.513249	Fixed point at 350 M constraint distance from 60 M + FOS_9, Art.76(5)	1.00
181	30.098216	24.517062	Fixed point at 350 M constraint distance from 60 M + FOS_9, Art.76(5)	1.00
182	30.081832	24.520820	Fixed point at 350 M constraint distance from 60 M + FOS_9, Art.76(5)	1.00
183	30.065439	24.524523	Fixed point at 350 M constraint distance from 60 M + FOS_9, Art.76(5)	1.00
184	30.049036	24.528172	Fixed point at 350 M constraint distance from 60 M + FOS_9, Art.76(5)	0.081
185	30.047714	24.528463	Fixed point at 350 M constraint distance from 60 M + FOS_9, Art.76(5)	0.526
186	30.039078	24.530367	Fixed point at 350 M constraint distance from 60 M + FOS_9, Art.76(5)	0.912
187	30.024105	24.533643	Fixed point at 350 M constraint distance from 60 M + FOS_9, Art.76(5)	1.00
188	30.007684	24.537182	Fixed point at 350 M constraint distance from 60 M + FOS_9, Art.76(5)	1.00
189	29.991255	24.540666	Fixed point at 350 M constraint distance from 60 M + FOS_9, Art.76(5)	1.00
190	29.974817	24.544095	Fixed point at 350 M constraint distance from 60 M + FOS_9, Art.76(5)	1.00
191	29.958370	24.547469	Fixed point at 350 M constraint distance from 60 M + FOS_9, Art.76(5)	1.00
192	29.941915	24.550788	Fixed point at 350 M constraint distance from 60 M + FOS_9, Art.76(5)	1.00
193	29.925452	24.554052	Fixed point at 350 M constraint distance from 60 M + FOS_9, Art.76(5)	1.00
194	29.908980	24.557261	Fixed point at 350 M constraint distance from 60 M + FOS_9, Art.76(5)	1.00



FP	Latitude North	Longitud West	Method, Article 76	Distance (M)
195	29.892501	24.560416	Fixed point at 350 M constraint distance from 60 M + FOS_9, Art.76(5)	1.00
196	29.876013	24.563515	Fixed point at 350 M constraint distance from 60 M + FOS_9, Art.76(5)	1.00
197	29.859518	24.566560	Fixed point at 350 M constraint distance from 60 M + FOS_9, Art.76(5)	1.00
198	29.843015	24.569550	Fixed point at 350 M constraint distance from 60 M + FOS_9, Art.76(5)	1.00
199	29.826505	24.572484	Fixed point at 350 M constraint distance from 60 M + FOS_9, Art.76(5)	1.00
200	29.809988	24.575364	Fixed point at 350 M constraint distance from 60 M + FOS_9, Art.76(5)	1.00
201	29.793463	24.578190	Fixed point at 350 M constraint distance from 60 M + FOS_9, Art.76(5)	1.00
202	29.776931	24.580960	Fixed point at 350 M constraint distance from 60 M + FOS_9, Art.76(5)	1.00
203	29.760392	24.583675	Fixed point at 350 M constraint distance from 60 M + FOS_9, Art.76(5)	1.00
204	29.743847	24.586336	Fixed point at 350 M constraint distance from 60 M + FOS_9, Art.76(5)	1.00
205	29.727295	24.588942	Fixed point at 350 M constraint distance from 60 M + FOS_9, Art.76(5)	1.00
206	29.710736	24.591492	Fixed point at 350 M constraint distance from 60 M + FOS_9, Art.76(5)	1.00
207	29.694172	24.593988	Fixed point at 350 M constraint distance from 60 M + FOS_9, Art.76(5)	0.363
208	29.688158	24.594874	Fixed point at 350 M constraint distance from 60 M + FOS_9, Art.76(5)	10.609
209	29.512032	24.617775	Fixed point at 350 M constraint distance from 60 M + FOS_14, Art.76(5)	1.027
210	29.494946	24.619665	Fixed point at 350 M constraint distance from 60 M + FOS_14, Art.76(5)	1.00
211	29.478311	24.621448	Fixed point at 350 M constraint distance from 60 M + FOS_14, Art.76(5)	1.00
212	29.461671	24.623178	Fixed point at 350 M constraint distance from 60 M + FOS_14, Art.76(5)	1.00
213	29.445027	24.624852	Fixed point at 350 M constraint distance from 60 M + FOS_14, Art.76(5)	1.00
214	29.428379	24.626471	Fixed point at 350 M constraint distance from 60 M + FOS_14, Art.76(5)	1.00
215	29.411727	24.628036	Fixed point at 350 M constraint distance from 60 M + FOS_14, Art.76(5)	1.00
216	29.395071	24.629547	Fixed point at 350 M constraint distance from 60 M + FOS_14, Art.76(5)	1.00
217	29.378412	24.631002	Fixed point at 350 M constraint distance from 60 M + FOS_14, Art.76(5)	1.00
218	29.361748	24.632403	Fixed point at 350 M constraint distance from 60 M + FOS_14, Art.76(5)	1.00
219	29.345081	24.63375	Fixed point at 350 M constraint distance from 60 M + FOS_14, Art.76(5)	1.00
220	29.328411	24.635042	Fixed point at 350 M constraint distance from 60 M + FOS_14, Art.76(5)	1.00



FP	Latitude North	Longitud West	Method, Article 76	Distance (M)
221	29.311738	24.636279	Fixed point at 350 M constraint distance from 60 M + FOS_14, Art.76(5)	1.00
222	29.295061	24.637462	Fixed point at 350 M constraint distance from 60 M + FOS_14, Art.76(5)	59.780
223	28.297912	24.704940	Fixed point at 350 M constraint distance from 60 M + FOS_15, Art.76(5)	0.027
224	28.281246	24.706318	Fixed point at 350 M constraint distance from 60 M + FOS_15, Art.76(5)	1.00
225	28.264576	24.707643	Fixed point at 350 M constraint distance from 60 M + FOS_15, Art.76(5)	1.00
226	28.247902	24.708914	Fixed point at 350 M constraint distance from 60 M + FOS_15, Art.76(5)	1.00
227	28.231226	24.710131	Fixed point at 350 M constraint distance from 60 M + FOS_15, Art.76(5)	1.00
228	28.214546	24.711294	Fixed point at 350 M constraint distance from 60 M + FOS_15, Art.76(5)	1.00
229	28.197864	24.712402	Fixed point at 350 M constraint distance from 60 M + FOS_15, Art.76(5)	1.00
230	28.181179	24.713457	Fixed point at 350 M constraint distance from 60 M + FOS_15, Art.76(5)	1.00
231	28.164491	24.714458	Fixed point at 350 M constraint distance from 60 M + FOS_15, Art.76(5)	1.00
232	28.147800	24.715405	Fixed point at 350 M constraint distance from 60 M + FOS_15, Art.76(5)	1.00
233	28.131107	24.716298	Fixed point at 350 M constraint distance from 60 M + FOS_15, Art.76(5)	1.00
234	28.114412	24.717138	Fixed point at 350 M constraint distance from 60 M + FOS_15, Art.76(5)	1.00
235	28.097715	24.717923	Fixed point at 350 M constraint distance from 60 M + FOS_15, Art.76(5)	1.00
236	28.081016	24.718655	Fixed point at 350 M constraint distance from 60 M + FOS_15, Art.76(5)	1.00
237	28.064315	24.719332	Fixed point at 350 M constraint distance from 60 M + FOS_15, Art.76(5)	1.00
238	28.047613	24.719956	Fixed point at 350 M constraint distance from 60 M + FOS_15, Art.76(5)	1.00
239	28.030909	24.720526	Fixed point at 350 M constraint distance from 60 M + FOS_15, Art.76(5)	1.00
240	28.014203	24.721042	Fixed point at 350 M constraint distance from 60 M + FOS_15, Art.76(5)	1.00
241	27.997496	24.721505	Fixed point at 350 M constraint distance from 60 M + FOS_15, Art.76(5)	1.00
242	27.980788	24.721914	Fixed point at 350 M constraint distance from 60 M + FOS_15, Art.76(5)	1.00
243	27.964080	24.722269	Fixed point at 350 M constraint distance from 60 M + FOS_15, Art.76(5)	1.00
244	27.947370	24.722570	Fixed point at 350 M constraint distance from 60 M + FOS_15, Art.76(5)	1.00
245	27.930659	24.722818	Fixed point at 350 M constraint distance from 60 M + FOS_15, Art.76(5)	1.00
246	27.913948	24.723012	Fixed point at 350 M constraint distance from 60 M + FOS_15, Art.76(5)	1.00



FP	Latitude North	Longitud West	Method, Article 76	Distance (M)
247	27.897236	24.723153	Fixed point at 350 M constraint distance from 60 M + FOS_15, Art.76(5)	1.00
248	27.880524	24.72324	Fixed point at 350 M constraint distance from 60 M + FOS_15, Art.76(5)	1.00
249	27.863812	24.723273	Fixed point at 350 M constraint distance from 60 M + FOS_15, Art.76(5)	1.00
250	27.847100	24.723253	Fixed point at 350 M constraint distance from 60 M + FOS_15, Art.76(5)	1.00
251	27.830388	24.723179	Fixed point at 350 M constraint distance from 60 M + FOS_15, Art.76(5)	1.00
252	27.813676	24.723052	Fixed point at 350 M constraint distance from 60 M + FOS_15, Art.76(5)	1.00
253	27.796964	24.722871	Fixed point at 350 M constraint distance from 60 M + FOS_15, Art.76(5)	1.00
254	27.780253	24.722637	Fixed point at 350 M constraint distance from 60 M + FOS_15, Art.76(5)	1.00
255	27.763543	24.722349	Fixed point at 350 M constraint distance from 60 M + FOS_15, Art.76(5)	1.00
256	27.746833	24.722009	Fixed point at 350 M constraint distance from 60 M + FOS_15, Art.76(5)	1.00
257	27.730124	24.721614	Fixed point at 350 M constraint distance from 60 M + FOS_15, Art.76(5)	1.00
258	27.713417	24.721167	Fixed point at 350 M constraint distance from 60 M + FOS_15, Art.76(5)	1.00
259	27.69671	24.720666	Fixed point on the 350 M constraint line, Art.76(5)	1.00
260	27.680004	24.720112	Fixed point on the 350 M constraint line, Art.76(5)	0.421
261	27.672969	24.719856	Fixed point on the 350 M constraint line, Art.76(5)	31.601
262	27.269954	24.337139	Fixed point from sediment thickness at 1% distance to FOS_19, Art.76(4) (a) (i)	59.578
263	26.276501	24.413743	Fixed point from sediment thickness at 1% distance to FOS_20, Art.76(4) (a) (i)	35.828
264	25.692831	24.265156	Fixed point on the 350 M constraint line, Art.76(5)	0.014
265	25.677058	24.258281	Fixed point on the 350 M constraint line, Art.76(5)	1.00
266	25.661527	24.251456	Fixed point on the 350 M constraint line, Art.76(5)	1.00
267	25.646013	24.244584	Fixed point on the 350 M constraint line, Art.76(5)	1.00
268	25.630517	24.237666	Fixed point on the 350 M constraint line, Art.76(5)	1.00
269	25.615038	24.230700	Fixed point on the 350 M constraint line, Art.76(5)	1.00
270	25.599577	24.223688	Fixed point on the 350 M constraint line, Art.76(5)	1.00
271	25.584133	24.216629	Fixed point on the 350 M constraint line, Art.76(5)	1.00
272	25.568708	24.209523	Fixed point on the 350 M constraint line, Art.76(5)	1.00
273	25.553300	24.202371	Fixed point on the 350 M constraint line, Art.76(5)	1.00
274	25.537911	24.195173	Fixed point on the 350 M constraint line, Art.76(5)	1.00



FP	Latitude North	Longitud West	Method, Article 76	Distance (M)
275	25.522540	24.187928	Fixed point on the 350 M constraint line, Art.76(5)	1.00
276	25.507187	24.180636	Fixed point on the 350 M constraint line, Art.76(5)	1.00
277	25.491853	24.173298	Fixed point on the 350 M constraint line, Art.76(5)	1.00
278	25.476538	24.165914	Fixed point on the 350 M constraint line, Art.76(5)	1.00
279	25.461241	24.158484	Fixed point on the 350 M constraint line, Art.76(5)	1.00
280	25.445963	24.151008	Fixed point on the 350 M constraint line, Art.76(5)	1.00
281	25.430704	24.143486	Fixed point at 350 M constraint distance from 60 M + FOS_25, Art.76(5)	1.00
282	25.415464	24.135918	Fixed point at 350 M constraint distance from 60 M + FOS_25, Art.76(5)	1.00
283	25.400243	24.128304	Fixed point at 350 M constraint distance from 60 M + FOS_25, Art.76(5)	1.00
284	25.385042	24.120644	Fixed point at 350 M constraint distance from 60 M + FOS_25, Art.76(5)	1.00
285	25.369860	24.112939	Fixed point at 350 M constraint distance from 60 M + FOS_25, Art.76(5)	1.00
286	25.354698	24.105188	Fixed point at 350 M constraint distance from 60 M + FOS_25, Art.76(5)	1.00
287	25.339555	24.097391	Fixed point at 350 M constraint distance from 60 M + FOS_25, Art.76(5)	1.00
288	25.324432	24.089549	Fixed point at 350 M constraint distance from 60 M + FOS_25, Art.76(5)	1.00
289	25.309329	24.081662	Fixed point at 350 M constraint distance from 60 M + FOS_25, Art.76(5)	1.00
290	25.294246	24.073729	Fixed point at 350 M constraint distance from 60 M + FOS_25, Art.76(5)	1.00
291	25.279183	24.065751	Fixed point at 350 M constraint distance from 60 M + FOS_25, Art.76(5)	1.00
292	25.264141	24.057728	Fixed point at 350 M constraint distance from 60 M + FOS_25, Art.76(5)	1.00
293	25.249118	24.049660	Fixed point at 350 M constraint distance from 60 M + FOS_25, Art.76(5)	1.00
294	25.234116	24.041547	Fixed point at 350 M constraint distance from 60 M + FOS_25, Art.76(5)	1.00
295	25.219135	24.033389	Fixed point at 350 M constraint distance from 60 M + FOS_25, Art.76(5)	1.00
296	25.204175	24.025186	Fixed point at 350 M constraint distance from 60 M + FOS_25, Art.76(5)	1.00
297	25.189235	24.016938	Fixed point at 350 M constraint distance from 60 M + FOS_25, Art.76(5)	1.00
298	25.174316	24.008645	Fixed point at 350 M constraint distance from 60 M + FOS_25, Art.76(5)	1.00
299	25.159419	24.000308	Fixed point at 350 M constraint distance from 60 M + FOS_25, Art.76(5)	1.00
300	25.144542	23.991927	Fixed point at 350 M constraint distance from 60 M + FOS_25, Art.76(5)	1.00
301	25.129687	23.983500	Fixed point at 350 M constraint distance from 60 M + FOS_25, Art.76(5)	1.00



FP	Latitude North	Longitud West	Method, Article 76	Distance (M)
302	25.114853	23.975030	Fixed point at 350 M constraint distance from 60 M + FOS_26, Art.76(5)	1.00
303	25.100041	23.966515	Fixed point at 350 M constraint distance from 60 M + FOS_26, Art.76(5)	1.00
304	25.085250	23.957956	Fixed point at 350 M constraint distance from 60 M + FOS_26, Art.76(5)	1.00
305	25.070481	23.949353	Fixed point at 350 M constraint distance from 60 M + FOS_26, Art.76(5)	1.00
306	25.055734	23.940706	Fixed point at 350 M constraint distance from 60 M + FOS_26, Art.76(5)	1.00
307	25.041008	23.932015	Fixed point at 350 M constraint distance from 60 M + FOS_26, Art.76(5)	1.00
308	25.026305	23.923279	Fixed point at 350 M constraint distance from 60 M + FOS_26, Art.76(5)	1.00
309	25.011624	23.914500	Fixed point at 350 M constraint distance from 60 M + FOS_26, Art.76(5)	1.00
310	24.996966	23.905678	Fixed point at 350 M constraint distance from 60 M + FOS_27, Art.76(5)	1.00
311	24.982329	23.896811	Fixed point at 350 M constraint distance from 60 M + FOS_27, Art.76(5)	1.00
312	24.967715	23.887901	Fixed point at 350 M constraint distance from 60 M + FOS_27, Art.76(5)	1.00
313	24.953124	23.878948	Fixed point at 350 M constraint distance from 60 M + FOS_27, Art.76(5)	1.00
314	24.938556	23.869951	Fixed point at 350 M constraint distance from 60 M + FOS_27, Art.76(5)	1.00
315	24.924010	23.860911	Fixed point at 350 M constraint distance from 60 M + FOS_27, Art.76(5)	1.00
316	24.909487	23.851827	Fixed point at 350 M constraint distance from 60 M + FOS_27, Art.76(5)	1.00
317	24.894988	23.842701	Fixed point at 350 M constraint distance from 60 M + FOS_27, Art.76(5)	1.00
318	24.880511	23.833531	Fixed point at 350 M constraint distance from 60 M + FOS_27, Art.76(5)	1.00
319	24.866058	23.824318	Fixed point at 350 M constraint distance from 60 M + FOS_27, Art.76(5)	1.00
320	24.851628	23.815062	Fixed point at 350 M constraint distance from 60 M + FOS_27, Art.76(5)	1.00
321	24.837222	23.805764	Fixed point at 350 M constraint distance from 60 M + FOS_27, Art.76(5)	1.00
322	24.822839	23.796423	Fixed point at 350 M constraint distance from 60 M + FOS_27, Art.76(5)	1.00
323	24.808480	23.787039	Fixed point at 350 M constraint distance from 60 M + FOS_27, Art.76(5)	1.00
324	24.794145	23.777612	Fixed point at 350 M constraint distance from 60 M + FOS_27, Art.76(5)	1.00
325	24.779834	23.768143	Fixed point at 350 M constraint distance from 60 M + FOS_27, Art.76(5)	1.00
326	24.765547	23.758632	Fixed point at 350 M constraint distance from 60 M + FOS_27, Art.76(5)	1.00
327	24.751284	23.749078	Fixed point at 350 M constraint distance from 60 M + FOS_27, Art.76(5)	1.00



FP	Latitude North	Longitud West	Method, Article 76	Distance (M)
328	24.737045	23.739482	Fixed point at 350 M constraint distance from 60 M + FOS_27, Art.76(5)	1.00
329	24.722831	23.729844	Fixed point at 350 M constraint distance from 60 M + FOS_27, Art.76(5)	1.00
330	24.708641	23.720163	Fixed point at 350 M constraint distance from 60 M + FOS_27, Art.76(5)	1.00
331	24.694475	23.710441	Fixed point at 350 M constraint distance from 60 M + FOS_27, Art.76(5)	1.00
332	24.680335	23.700677	Fixed point at 350 M constraint distance from 60 M + FOS_27, Art.76(5)	1.00
333	24.666219	23.690871	Fixed point at 350 M constraint distance from 60 M + FOS_27, Art.76(5)	1.00
334	24.652128	23.681023	Fixed point at 350 M constraint distance from 60 M + FOS_27, Art.76(5)	1.00
335	24.638062	23.671134	Fixed point at 350 M constraint distance from 60 M + FOS_27, Art.76(5)	1.00
336	24.624021	23.661203	Fixed point at 350 M constraint distance from 60 M + FOS_27, Art.76(5)	1.00
337	24.610005	23.651230	Fixed point at 350 M constraint distance from 60 M + FOS_27, Art.76(5)	1.00
338	24.596015	23.641216	Fixed point at 350 M constraint distance from 60 M + FOS_27, Art.76(5)	1.00
339	24.582050	23.631161	Fixed point at 350 M constraint distance from 60 M + FOS_27, Art.76(5)	1.00
340	24.568111	23.621065	Fixed point at 350 M constraint distance from 60 M + FOS_27, Art.76(5)	1.00
341	24.554197	23.610927	Fixed point at 350 M constraint distance from 60 M + FOS_27, Art.76(5)	1.00
342	24.540309	23.600749	Fixed point at 350 M constraint distance from 60 M + FOS_27, Art.76(5)	1.00
343	24.526447	23.590530	Fixed point at 350 M constraint distance from 60 M + FOS_27, Art.76(5)	1.00
344	24.512611	23.580269	Fixed point at 350 M constraint distance from 60 M + FOS_27, Art.76(5)	1.00
345	24.498801	23.569968	Fixed point at 350 M constraint distance from 60 M + FOS_27, Art.76(5)	1.00
346	24.485017	23.559626	Fixed point at 350 M constraint distance from 60 M + FOS_27, Art.76(5)	1.00
347	24.471259	23.549244	Fixed point at 350 M constraint distance from 60 M + FOS_27, Art.76(5)	1.00
348	24.457528	23.538822	Fixed point at 350 M constraint distance from 60 M + FOS_27, Art.76(5)	1.00
349	24.443823	23.528358	Fixed point at 350 M constraint distance from 60 M + FOS_27, Art.76(5)	1.00
350	24.430145	23.517855	Fixed point at 350 M constraint distance from 60 M + FOS_27, Art.76(5)	1.00
351	24.416493	23.507311	Fixed point at 350 M constraint distance from 60 M + FOS_27, Art.76(5)	1.00
352	24.402868	23.496727	Fixed point at 350 M constraint distance from 60 M + FOS_27, Art.76(5)	1.00
353	24.389270	23.486103	Fixed point at 350 M constraint distance from 60 M + FOS_27, Art.76(5)	1.00



FP	Latitude North	Longitud West	Method, Article 76	Distance (M)
354	24.375699	23.475439	Fixed point at 350 M constraint distance from 60 M + FOS_27, Art.76(5)	1.00
355	24.362155	23.464735	Fixed point at 350 M constraint distance from 60 M + FOS_27, Art.76(5)	1.00
356	24.348638	23.453992	Fixed point at 350 M constraint distance from 60 M + FOS_27, Art.76(5)	1.00
357	24.335149	23.443209	Fixed point at 350 M constraint distance from 60 M + FOS_27, Art.76(5)	1.00
358	24.321687	23.432386	Fixed point at 350 M constraint distance from 60 M + FOS_27, Art.76(5)	1.00
359	24.308253	23.421523	Fixed point at 350 M constraint distance from 60 M + FOS_27, Art.76(5)	1.00
360	24.294846	23.410622	Fixed point at 350 M constraint distance from 60 M + FOS_27, Art.76(5)	1.00
361	24.281466	23.399680	Fixed point at 350 M constraint distance from 60 M + FOS_27, Art.76(5)	1.00
362	24.268115	23.388700	Fixed point at 350 M constraint distance from 60 M + FOS_27, Art.76(5)	1.00
363	24.254792	23.377681	Fixed point at 350 M constraint distance from 60 M + FOS_27, Art.76(5)	1.00
364	24.241496	23.366622	Fixed point at 350 M constraint distance from 60 M + FOS_27, Art.76(5)	1.00
365	24.228228	23.355525	Fixed point at 350 M constraint distance from 60 M + FOS_27, Art.76(5)	1.00
366	24.214989	23.344389	Fixed point at 350 M constraint distance from 60 M + FOS_27, Art.76(5)	1.00
367	24.201778	23.333214	Fixed point at 350 M constraint distance from 60 M + FOS_27, Art.76(5)	1.00
368	24.188596	23.322000	Fixed point at 350 M constraint distance from 60 M + FOS_27, Art.76(5)	1.00
369	24.175442	23.310748	Fixed point at 350 M constraint distance from 60 M + FOS_27, Art.76(5)	1.00
370	24.162316	23.299457	Fixed point at 350 M constraint distance from 60 M + FOS_27, Art.76(5)	1.00
371	24.149219	23.288128	Fixed point at 350 M constraint distance from 60 M + FOS_27, Art.76(5)	1.00
372	24.136151	23.276761	Fixed point at 350 M constraint distance from 60 M + FOS_27, Art.76(5)	1.00
373	24.123112	23.265355	Fixed point at 350 M constraint distance from 60 M + FOS_27, Art.76(5)	1.00
374	24.110102	23.253912	Fixed point at 350 M constraint distance from 60 M + FOS_27, Art.76(5)	1.00
375	24.097121	23.242430	Fixed point at 350 M constraint distance from 60 M + FOS_27, Art.76(5)	1.00
376	24.084169	23.230911	Fixed point at 350 M constraint distance from 60 M + FOS_27, Art.76(5)	1.00
377	24.071246	23.219353	Fixed point at 350 M constraint distance from 60 M + FOS_27, Art.76(5)	1.00
378	24.058353	23.207758	Fixed point at 350 M constraint distance from 60 M + FOS_27, Art.76(5)	1.00
379	24.045489	23.196126	Fixed point at 350 M constraint distance from 60 M + FOS_27, Art.76(5)	1.00
380	24.032655	23.184455	Fixed point on the 350 M constraint line, Art.76(5)	1.00



FP	Latitude North	Longitud West	Method, Article 76	Distance (M)
381	24.019850	23.172748	Fixed point on the 350 M constraint line, Art.76(5)	1.00
382	24.007075	23.161003	Fixed point on the 350 M constraint line, Art.76(5)	1.00
383	23.994330	23.149221	Fixed point on the 350 M constraint line, Art.76(5)	1.00
384	23.981615	23.137401	Fixed point on the 350 M constraint line, Art.76(5)	1.00
385	23.96893	23.125545	Fixed point on the 350 M constraint line, Art.76(5)	0.333
386	23.964714	23.121583	Fixed point on the 350 M constraint line, Art.76(5)	50.560
387	23.505684	22.350353	Fixed point from sediment thickness at 1% distance to FOS_29, Art.76(4) (a) (i)	59.999
388	23.083410	21.365017	Fixed point at 60M from FOS_30, Art.76(4) (a) (ii)	0.954
389	23.070344	21.355136	Fixed point at 60M from FOS_30, Art.76(4) (a) (ii)	1.00
390	23.056802	21.344531	Fixed point at 60M from FOS_30, Art.76(4) (a) (ii)	1.00
391	23.043426	21.333685	Fixed point at 60M from FOS_30, Art.76(4) (a) (ii)	1.00
392	23.030218	21.322603	Fixed point at 60M from FOS_30, Art.76(4) (a) (ii)	1.00
393	23.017181	21.311286	Fixed point at 60M from FOS_30, Art.76(4) (a) (ii)	1.00
394	23.004321	21.299738	Fixed point at 60M from FOS_30, Art.76(4) (a) (ii)	1.00
395	22.991639	21.287963	Fixed point at 60M from FOS_30, Art.76(4) (a) (ii)	1.00
396	22.979140	21.275963	Fixed point at 60M from FOS_30, Art.76(4) (a) (ii)	1.00
397	22.966827	21.263742	Fixed point at 60M from FOS_30, Art.76(4) (a) (ii)	1.00
398	22.954703	21.251303	Fixed point at 60M from FOS_30, Art.76(4) (a) (ii)	1.00
399	22.942771	21.23865	Fixed point at 60M from FOS_30, Art.76(4) (a) (ii)	1.00
400	22.931036	21.225786	Fixed point at 60M from FOS_30, Art.76(4) (a) (ii)	1.00
401	22.919499	21.212716	Fixed point at 60M from FOS_30, Art.76(4) (a) (ii)	1.00
402	22.908165	21.199441	Fixed point at 60M from FOS_30, Art.76(4) (a) (ii)	1.00
403	22.897036	21.185967	Fixed point at 60M from FOS_30, Art.76(4) (a) (ii)	1.00
404	22.886116	21.172297	Fixed point at 60M from FOS_30, Art.76(4) (a) (ii)	1.00
405	22.875407	21.158434	Fixed point at 60M from FOS_30, Art.76(4) (a) (ii)	1.00
406	22.864912	21.144383	Fixed point at 60M from FOS_30, Art.76(4) (a) (ii)	1.00
407	22.854635	21.130147	Fixed point at 60M from FOS_30, Art.76(4) (a) (ii)	1.00
408	22.844577	21.115731	Fixed point at 60M from FOS_30, Art.76(4) (a) (ii)	1.00
409	22.834742	21.101138	Fixed point at 60M from FOS_30, Art.76(4) (a) (ii)	1.00



FP	Latitude North	Longitud West	Method, Article 76	Distance (M)
410	22.825133	21.086372	Fixed point at 60M from FOS_30, Art.76(4) (a) (ii)	1.00
411	22.815751	21.071437	Fixed point at 60M from FOS_30, Art.76(4) (a) (ii)	1.00
412	22.806600	21.056338	Fixed point at 60M from FOS_30, Art.76(4) (a) (ii)	1.00
413	22.797682	21.041079	Fixed point at 60M from FOS_30, Art.76(4) (a) (ii)	1.00
414	22.789000	21.025663	Fixed point at 60M from FOS_30, Art.76(4) (a) (ii)	1.00
415	22.780556	21.010095	Fixed point at 60M from FOS_30, Art.76(4) (a) (ii)	1.00
416	22.772351	20.994380	Fixed point at 60M from FOS_30, Art.76(4) (a) (ii)	1.00
417	22.764389	20.978521	Fixed point at 60M from FOS_30, Art.76(4) (a) (ii)	1.00
418	22.756672	20.962523	Fixed point at 60M from FOS_30, Art.76(4) (a) (ii)	1.00
419	22.749201	20.946390	Fixed point at 60M from FOS_30, Art.76(4) (a) (ii)	1.00
420	22.741980	20.930128	Fixed point at 60M from FOS_30, Art.76(4) (a) (ii)	1.00
421	22.735008	20.913739	Fixed point at 60M from FOS_30, Art.76(4) (a) (ii)	1.00
422	22.728290	20.897229	Fixed point at 60M from FOS_30, Art.76(4) (a) (ii)	1.00
423	22.721826	20.880602	Fixed point at 60M from FOS_30, Art.76(4) (a) (ii)	1.00
424	22.715617	20.863863	Fixed point at 60M from FOS_30, Art.76(4) (a) (ii)	1.00
425	22.709667	20.847016	Fixed point at 60M from FOS_30, Art.76(4) (a) (ii)	1.00
426	22.703977	20.830066	Fixed point at 60M from FOS_30, Art.76(4) (a) (ii)	1.00
427	22.698547	20.813017	Fixed point at 60M from FOS_30, Art.76(4) (a) (ii)	1.00
428	22.693380	20.795875	Fixed point at 60M from FOS_30, Art.76(4) (a) (ii)	1.00
429	22.688477	20.778644	Fixed point at 60M from FOS_30, Art.76(4) (a) (ii)	1.00
430	22.683839	20.761328	Fixed point at 60M from FOS_30, Art.76(4) (a) (ii)	1.00
431	22.679467	20.743932	Fixed point at 60M from FOS_30, Art.76(4) (a) (ii)	1.00
432	22.675364	20.726461	Fixed point at 60M from FOS_30, Art.76(4) (a) (ii)	1.00
433	22.671529	20.70892	Fixed point at 60M from FOS_30, Art.76(4) (a) (ii)	1.00
434	22.667964	20.691313	Fixed point at 60M from FOS_30, Art.76(4) (a) (ii)	1.00
435	22.664670	20.673646	Fixed point at 60M from FOS_30, Art.76(4) (a) (ii)	1.00
436	22.661647	20.655923	Fixed point at 60M from FOS_30, Art.76(4) (a) (ii)	1.00
437	22.658897	20.638149	Fixed point at 60M from FOS_30, Art.76(4) (a) (ii)	1.00
438	22.656421	20.620328	Fixed point at 60M from FOS_30, Art.76(4) (a) (ii)	1.00



FP	Latitude North	Longitud West	Method, Article 76	Distance (M)
439	22.654218	20.602466	Fixed point at 60M from FOS_30, Art.76(4) (a) (ii)	1.00
440	22.652290	20.584568	Fixed point at 60M from FOS_30, Art.76(4) (a) (ii)	1.00
441	22.650637	20.566637	Fixed point at 60M from FOS_30, Art.76(4) (a) (ii)	1.00
442	22.649260	20.548680	Fixed point at 60M from FOS_30, Art.76(4) (a) (ii)	1.00
443	22.648158	20.530702	Fixed point at 60M from FOS_30, Art.76(4) (a) (ii)	1.00
444	22.647333	20.512706	Fixed point at 60M from FOS_30, Art.76(4) (a) (ii)	1.00
445	22.646784	20.494698	Fixed point at 60M from FOS_30, Art.76(4) (a) (ii)	1.00
446	22.646512	20.476682	Fixed point at 60M from FOS_30, Art.76(4) (a) (ii)	1.00
447	22.646517	20.458664	Fixed point at 60M from FOS_30, Art.76(4) (a) (ii)	1.00
448	22.646794	20.44089	Fixed point at 60M from FOS_30 and at the intersection with the 200M computed line from third parties	