



# The French Continental Shelf

**Partial Submission  
to the Commission on the Limits of the Continental Shelf  
pursuant to Article 76, paragraph 8  
of the United Nations Convention on the Law of the Sea  
in respect of the areas of the French Antilles and the Kerguelen Islands**

---

**Part 1**

**Executive Summary  
English Translation of the French Original**

	Satellite Image of Guadeloupe						R/V Marion Dufresne during a storm		
			L'Atalante, oceanographic research vessel of Ifremer						
R/V Marion Dufresne in the Southern Aurore Bay Kerguelen									
							Barracuda <a href="http://www.divemagazine.co.uk">www.divemagazine.co.uk</a>		

# The French Continental Shelf

## Table of Contents

1	Introduction .....	1
2	The continental shelf .....	1
2.1	Antilles .....	2
2.2	Kerguelen .....	3
3	Specific provisions invoked to support this partial submission .....	4
3.1	Antilles .....	4
3.2	Kerguelen .....	4
4	Absence of disputes .....	4
4.1	Antilles .....	4
4.2	Kerguelen .....	4
5	Description of the outer limits of the continental shelf .....	5
5.1	Antilles .....	5
5.2	Kerguelen .....	6
6	State bodies responsible for the preparation of this partial continental shelf submission .....	8
	Appendix 1: Outer limit of the continental shelf in the area of the French Antilles .....	9
	Appendix 2: Outer limit of the continental shelf in the area of the Kerguelen Islands .....	11

# The French Continental Shelf

## List of Figures

Figure 1: The continental shelf in the area of the French Antilles, indicated by the yellow shaded area comprised between the 200 mile limit and the outer limit of the continental shelf.....	2
Figure 2: The continental shelf in the area of the Kerguelen Islands, indicated by the yellow shaded area comprised between the 200 mile limit and the outer limit of the continental shelf.....	3
Figure 3: Detailed map of the outer limit of the continental shelf in the area of the French Antilles .....	5
Figure 4: Detailed map of the outer limit of the continental shelf in the area of the Kerguelen Islands .....	6

## List of Tables

Table 1: List of coordinates defining the outer limit of the continental shelf in the area of the French Antilles. ....	9
Table 2: List of coordinates defining the outer limit of the continental shelf in the area of the Kerguelen Islands. ....	11

## 1 Introduction

This submission to the Commission on the Limits of the Continental Shelf is made by the Government of the French Republic pursuant to Article 76, paragraph 8, and article 4 of Annex II of the United Nations Convention on the Law of the Sea, in support of the establishment of the outer limits of the continental shelf beyond the 200 nautical miles from the baselines from which the breadth of the territorial sea is measured, in the areas of the overseas Departments of the French Antilles, Guadeloupe and Martinique (hereafter “Antilles”), and of the District of Kerguelen (hereafter “Kerguelen”). This submission is a partial submission, as was the submission presented jointly with Spain, Ireland and the United Kingdom of Great Britain and Northern Ireland on the 19<sup>th</sup> of May 2006, for the region of the Celtic Sea and the Bay of Biscay on the one hand, and the submission presented on the 22<sup>nd</sup> of May 2007, for the regions offshore French Guiana and New Caledonia, on the other hand.

## 2 The continental shelf

The present submission deals only with the outer limit of the continental shelf in the areas of the Antilles and Kerguelen. In accordance with paragraph 3 of Annex I of the Rules and Procedures, submissions for other parts of the French continental shelf will be made at a later stage, without prejudging the resolution of pending questions related to the determination of limits in those parts of the continental shelf claimed by France and any other State.

# The French Continental Shelf

## 2.1 Antilles

The extension of the continental shelf beyond 200 miles from the baselines of the French Antilles is located at the base of the margin of the Caribbean subduction zone (Figure 1). The continental shelf is adjacent to that of Barbados to the south.

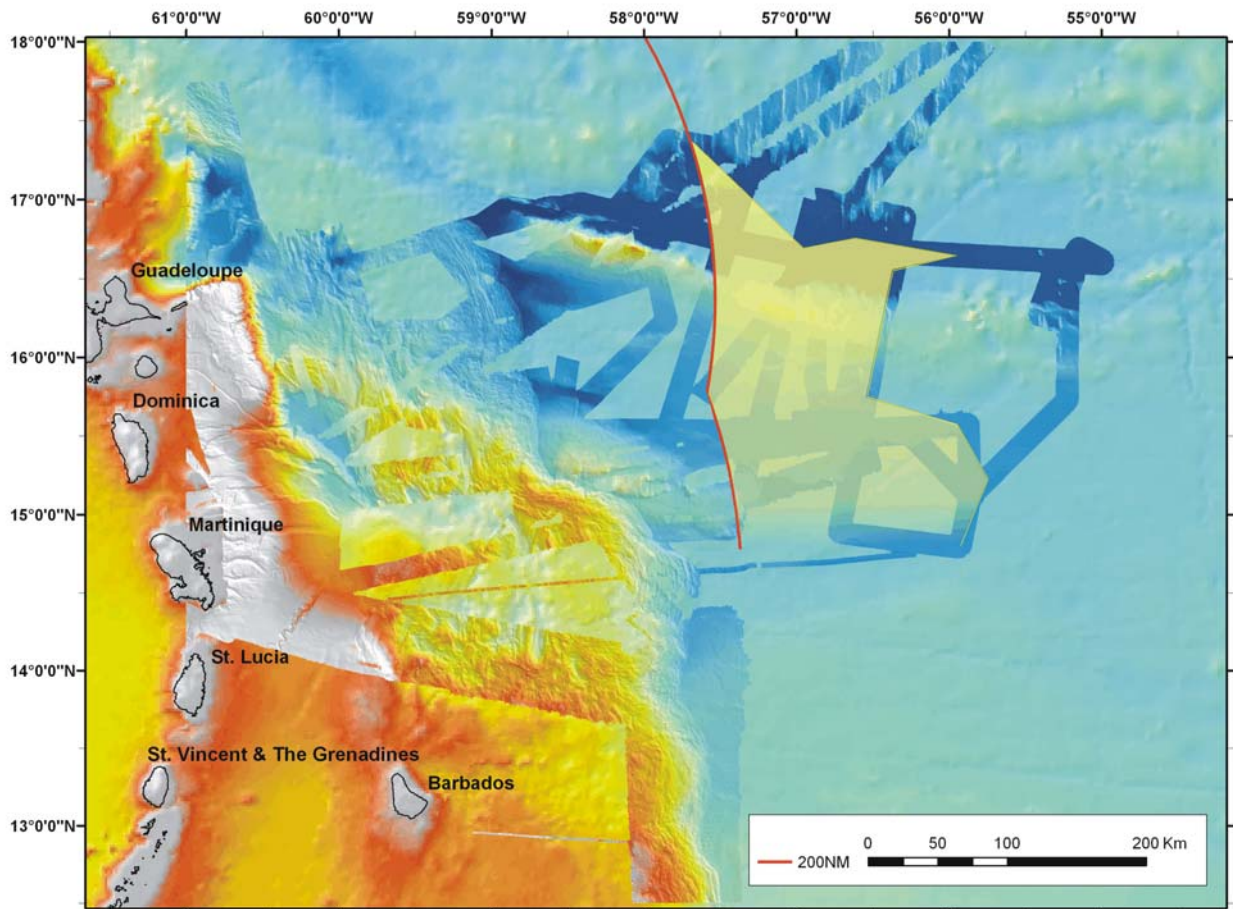


Figure 1: The continental shelf in the area of the French Antilles, indicated by the yellow shaded area comprised between the 200 mile limit and the outer limit of the continental shelf.

(Projection: Mercator, 10°N; Satellite and multibeam bathymetry)

# The French Continental Shelf

## 2.2 Kerguelen

The extension of the continental shelf in the region of Kerguelen is situated on the plateau and its margins (Figure 2). The extension is limited to the south-east by the area under Australian jurisdiction.

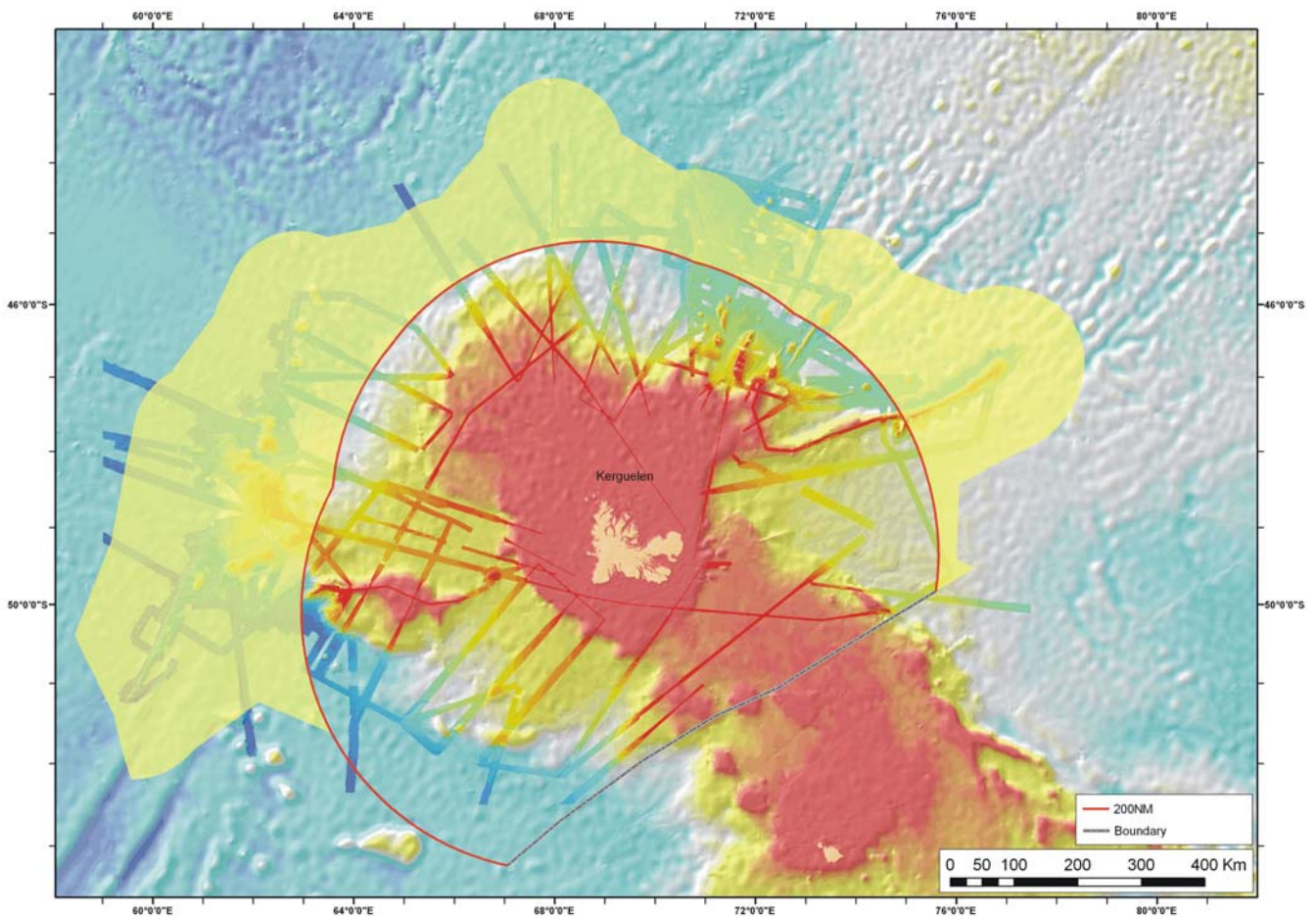


Figure 2: The continental shelf in the area of the Kerguelen Islands, indicated by the yellow shaded area comprised between the 200 mile limit and the outer limit of the continental shelf.

(Projection: Mercator, 45°S; Satellite and multibeam bathymetry)

### **3 Specific provisions invoked to support this partial submission**

#### **3.1 Antilles**

The outer limit is based on the provisions of Articles 76.1, 76.4 (a)(i), 76.4 (a)(ii) and 76.4 (b) of the United Nations Convention on the Law of the Sea.

#### **3.2 Kerguelen**

The outer limit is based on the provisions of Articles 76.1, 76.4 (a)(i), 76.4 (a)(ii), 76.4 (b) and 76.5 of the United Nations Convention on the Law of the Sea and on the Agreement for Maritime Delimitation between France and Australia of January 4<sup>th</sup>, 1982 (United Nations Publications, Volume 1329, page 107).

### **4 Absence of disputes**

#### **4.1 Antilles**

In accordance with paragraph 2(a) of Annex I to the Rules of Procedures of the CLCS, France wishes to inform the Commission of the possibility that its continental shelf in the area of the Antilles overlaps with the continental shelf of Barbados, but that, by mutual agreement, this hypothesis should not prevent the Commission from examining the submissions of both States.

#### **4.2 Kerguelen**

In accordance with paragraph 2(a) of Annex I to the Rules of Procedures of the CLCS, France wishes to inform the Commission that the continental shelf in the area of Kerguelen is not the subject of any dispute between France and any other State.



## 5 Description of the outer limits of the continental shelf

### 5.1 Antilles

France has used the lines determined by the 1% sediment thickness formula (the Gardiner or Irish Formula) for the area offshore the French Antilles. On the seismic data provided, sufficient sediment thickness has been demonstrated to allow the application of this formula of 1% sediment thickness with respect to the shortest distance to the foot of the slope. Accordingly, 7 fixed points have been established, which, combined with an 8<sup>th</sup> fixed point located on the 200 mile limit as measured from the French baselines, and a 9<sup>th</sup> point determined by the Hedberg Formula constitute the outer limit of the continental shelf offshore the French Antilles (Figure 3 and Table 1). The distance between consecutive fixed points does not exceed 60 nautical miles. The fixed points do not exceed 350 nautical miles from the baselines from which the breadth of the territorial sea of Martinique and Guadeloupe is measured.

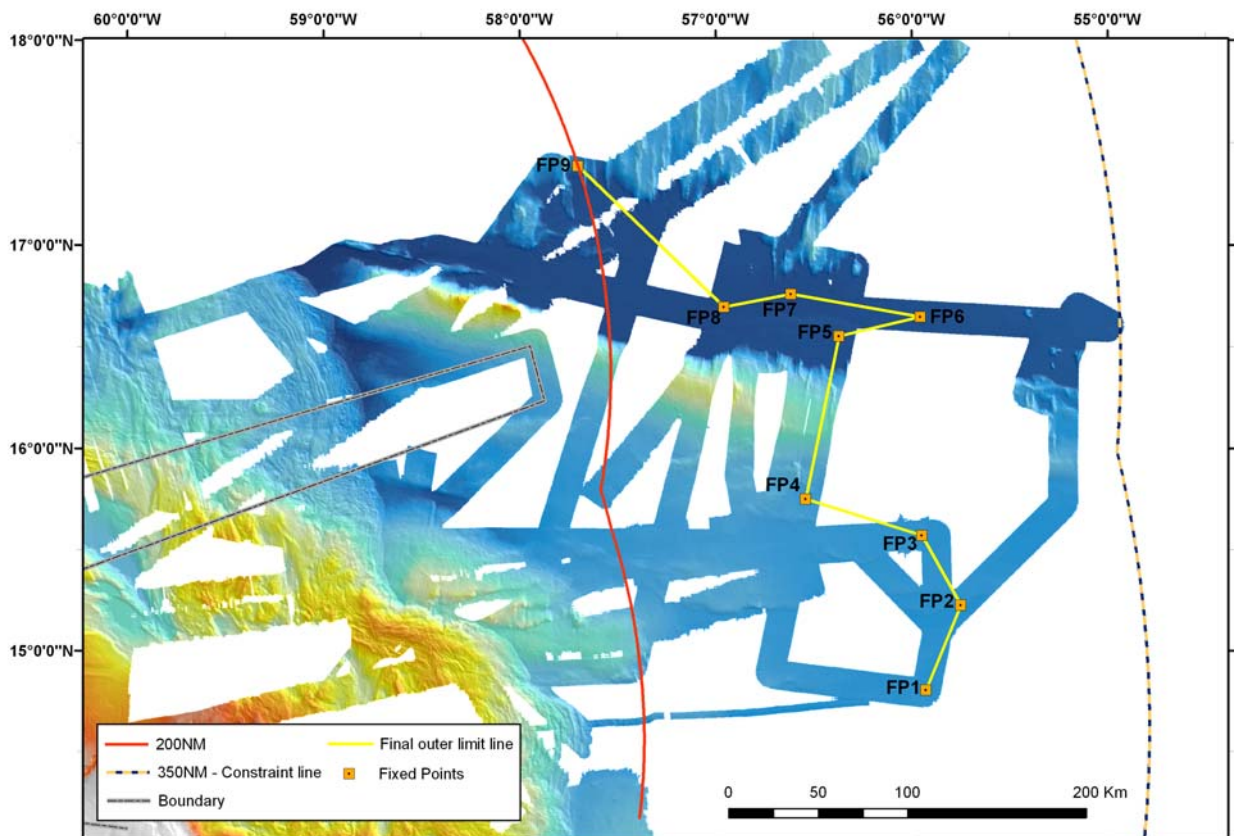


Figure 3: Detailed map of the outer limit of the continental shelf in the area of the French Antilles.

(Projection: Mercator, 10°N; Multibeam bathymetry)

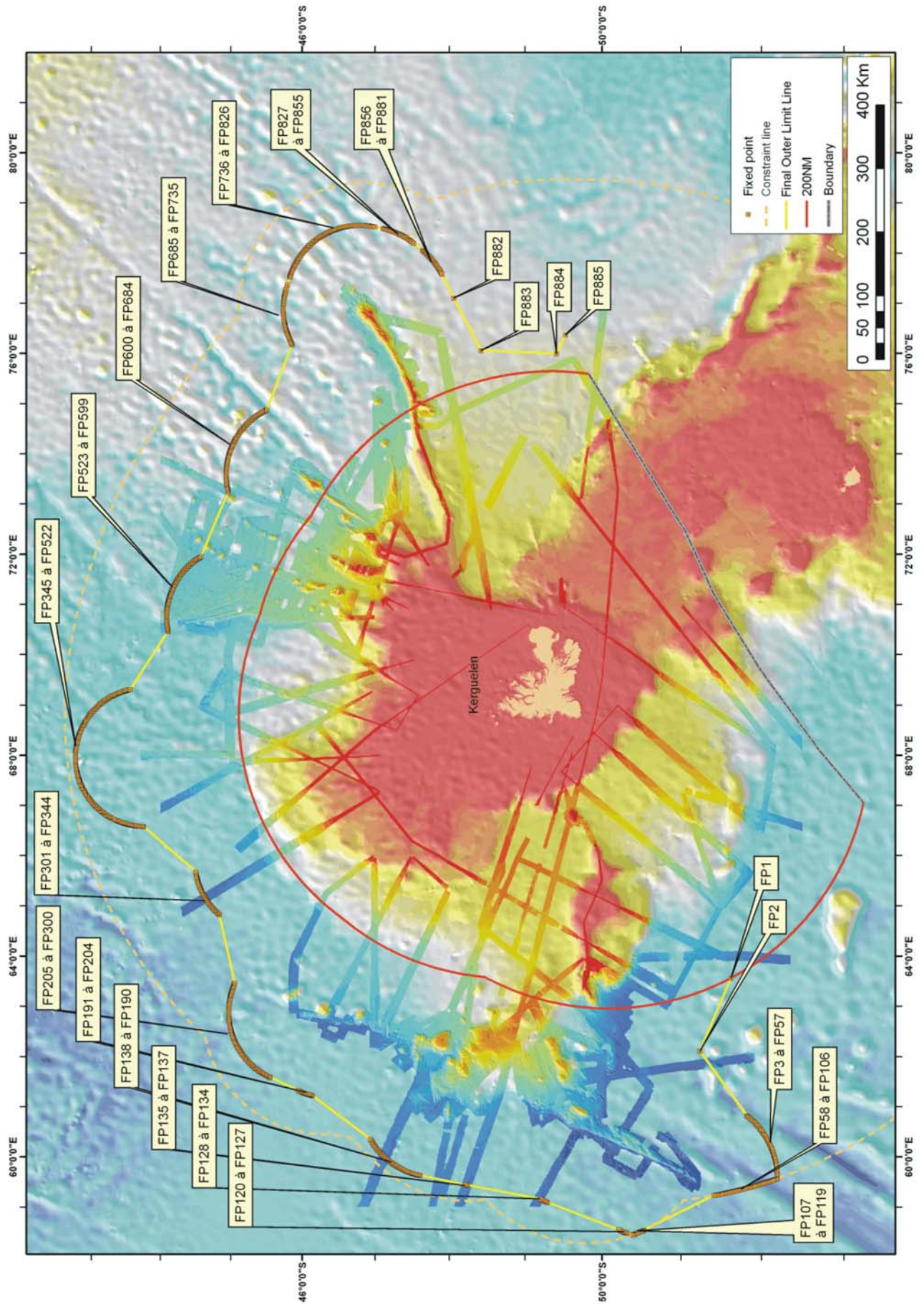
### 5.2 Kerguelen

In this submission, the outer limit of the continental shelf has been constructed by 885 fixed points: 821 fixed points are based on the Hedberg Formula, 62 fixed points are located on the constraint line, one fixed point is located on the 200 mile limit as measured from the French baselines and a last fixed point is positioned on the Maritime Delimitation with Australia by interpolation between fixed points on either side (Figure 4, Table 2). The distance between consecutive fixed points does not exceed 60 nautical miles. These fixed points do not exceed 350 nautical miles from the baselines from which the breadth of the territorial sea of the Kerguelen Islands is measured, or do not exceed 100 nautical miles from the 2,500 metre isobath.

---

Figure 4: Detailed map of the outer limit of the continental shelf in the area of the Kerguelen Islands.  
(Projection: Mercator, 45°S; Satellite and multibeam bathymetry) →

# The French Continental Shelf



## **6 State bodies responsible for the preparation of this partial continental shelf submission**

EXTRAPLAC is a national multi-year program dedicated to the continental shelf extension, funded by the French Government. This submission, as well as all maps, figures, appendices and data bases were prepared by a consortium coordinated by the General Secretariat for the Sea (SGMer) and constituted of the French Research Institute for the Exploitation of the Sea (Ifremer), the Hydrographic and Oceanographic Service of the Navy (SHOM), the French Petroleum Institute (IFP), and the French Polar Institute Paul-Emile Victor (IPEV).

## The French Continental Shelf

### Appendix 1: Outer limit of the continental shelf in the area of the French Antilles

Table 1: List of coordinates defining the outer limit of the continental shelf in the area of the French Antilles.

All coordinates relate to the WGS 84 geodetic reference system

FP	Latitude North	Longitude West	Method	from FP	to FP	Distance (m)	Distance (miles)
1	14.8042339	55.9226672	Fixed point resulting from sediment thickness of 1% of distance to the Foot of the Slope, 76 (4)				
2	15.2257212	55.7456627	Fixed point resulting from sediment thickness of 1% of distance to the Foot of the Slope, 76 (4)	1	2	50371	27.198
3	15.5689650	55.9448940	Fixed point resulting from sediment thickness of 1% of distance to the Foot of the Slope, 76 (4)	2	3	43589	23.536
4	15.7485944	56.5375186	Fixed point at 60 miles from the Foot of the Slope, 76 (4)	3	4	66574	35.947
5	16.5516941	56.3670736	Fixed point resulting from sediment thickness of 1% of distance to the Foot of the Slope, 76 (4)	4	5	90721	49.986
6	16.6468622	55.9531094	Fixed point resulting from sediment thickness of 1% of distance to the Foot of the Slope, 76 (4)	5	6	45412	24.521
7	16.758522	56.6136838	Fixed point resulting from sediment thickness of 1% of distance to the Foot of the Slope, 76 (4)	6	7	71527	38.622
8	16.6941445	56.9541230	Fixed point resulting from sediment thickness of 1% of distance to the Foot of the Slope, 76 (4)	7	8	36996	19.977
9	17.3846296	57.6998418	Fixed Point situated at 200 miles from the baselines, 76 (1)	8	9	110192	59.499

## The French Continental Shelf

## The French Continental Shelf

### Appendix 2: Outer limit of the continental shelf in the area of the Kerguelen Islands

Table 2: List of coordinates defining the outer limit of the continental shelf in the area of the Kerguelen Islands.

All coordinates relate to the WGS 84 geodetic reference system

FP	Latitude South	Longitude East	Method, Article 76	from PF	to PF	Distance (m)	Distance (Miles)
001	51.6239971	63.5641405	Fixed Point situated at 200 miles from the baselines, 76 (1)				
002	51.2375040	62.1052540	Fixed Point at 60 miles from the foot of the slope, 76 (4)	001	002	110192	59.499
003	51.8203647	60.8214604	Fixed Point at 60 miles from the foot of the slope, 76 (4)	002	003	110190	59.498
004	51.8276876	60.8120865	Fixed Point at 60 miles from the foot of the slope, 76 (4)	003	004	1041	0.562
005	51.8405519	60.7950432	Fixed Point at 60 miles from the foot of the slope, 76 (4)	004	005	1852	1.000
006	51.8532317	60.7776451	Fixed Point at 60 miles from the foot of the slope, 76 (4)	005	006	1852	1.000
007	51.8657327	60.7598966	Fixed Point at 60 miles from the foot of the slope, 76 (4)	006	007	1852	1.000
008	51.8780467	60.7418000	Fixed Point at 60 miles from the foot of the slope, 76 (4)	007	008	1852	1.000
009	51.8901670	60.7233644	Fixed Point at 60 miles from the foot of the slope, 76 (4)	008	009	1852	1.000
010	51.9020923	60.7046030	Fixed Point at 60 miles from the foot of the slope, 76 (4)	009	010	1852	1.000
011	51.9138186	60.6855071	Fixed Point at 60 miles from the foot of the slope, 76 (4)	010	011	1852	1.000
012	51.9253446	60.6660878	Fixed Point at 60 miles from the foot of the slope, 76 (4)	011	012	1852	1.000
013	51.9366678	60.6463563	Fixed Point at 60 miles from the foot of the slope, 76 (4)	012	013	1852	1.000
014	51.9477785	60.6263081	Fixed Point at 60 miles from the foot of the slope, 76 (4)	013	014	1852	1.000
015	51.9586811	60.6059523	Fixed Point at 60 miles from the foot of the slope, 76 (4)	014	015	1852	1.000
016	51.9693675	60.5853000	Fixed Point at 60 miles from the foot of the slope, 76 (4)	015	016	1852	1.000
017	51.9798363	60.5643423	Fixed Point at 60 miles from the foot of the slope, 76 (4)	016	017	1852	1.000
018	51.9900864	60.5431039	Fixed Point at 60 miles from the foot of the slope, 76 (4)	017	018	1852	1.000
019	52.0001082	60.5215848	Fixed Point at 60 miles from the foot of the slope, 76 (4)	018	019	1852	1.000
020	52.0099073	60.4997827	Fixed Point at 60 miles from the foot of the slope, 76 (4)	019	020	1852	1.000
021	52.0194716	60.4777088	Fixed Point at 60 miles from the foot of the slope, 76 (4)	020	021	1852	1.000

## The French Continental Shelf

FP	Latitude South	Longitude East	Method, Article 76	from PF	to PF	Distance (m)	Distance (Miles)
022	52.0288094	60.4553745	Fixed Point at 60 miles from the foot of the slope, 76 (4)	021	022	1852	1.000
023	52.0379083	60.4327818	Fixed Point at 60 miles from the foot of the slope, 76 (4)	022	023	1852	1.000
024	52.0467700	60.4099354	Fixed Point at 60 miles from the foot of the slope, 76 (4)	023	024	1852	1.000
025	52.0553933	60.3868420	Fixed Point at 60 miles from the foot of the slope, 76 (4)	024	025	1852	1.000
026	52.0637712	60.3635150	Fixed Point at 60 miles from the foot of the slope, 76 (4)	025	026	1852	1.000
027	52.0719039	60.3399522	Fixed Point at 60 miles from the foot of the slope, 76 (4)	026	027	1852	1.000
028	52.0797875	60.3161670	Fixed Point at 60 miles from the foot of the slope, 76 (4)	027	028	1852	1.000
029	52.0874235	60.2921596	Fixed Point at 60 miles from the foot of the slope, 76 (4)	028	029	1852	1.000
030	52.0948064	60.2679477	Fixed Point at 60 miles from the foot of the slope, 76 (4)	029	030	1852	1.000
031	52.1019322	60.2435248	Fixed Point at 60 miles from the foot of the slope, 76 (4)	030	031	1852	1.000
032	52.1088065	60.2189064	Fixed Point at 60 miles from the foot of the slope, 76 (4)	031	032	1852	1.000
033	52.1154172	60.1941017	Fixed Point at 60 miles from the foot of the slope, 76 (4)	032	033	1852	1.000
034	52.1217683	60.1691106	Fixed Point at 60 miles from the foot of the slope, 76 (4)	033	034	1852	1.000
035	52.1278559	60.1439420	Fixed Point at 60 miles from the foot of the slope, 76 (4)	034	035	1852	1.000
036	52.1336815	60.1186118	Fixed Point at 60 miles from the foot of the slope, 76 (4)	035	036	1852	1.000
037	52.1392423	60.0931153	Fixed Point at 60 miles from the foot of the slope, 76 (4)	036	037	1852	1.000
038	52.1445303	60.0674707	Fixed Point at 60 miles from the foot of the slope, 76 (4)	037	038	1852	1.000
039	52.1495552	60.0416778	Fixed Point at 60 miles from the foot of the slope, 76 (4)	038	039	1852	1.000
040	52.1543046	60.0157479	Fixed Point at 60 miles from the foot of the slope, 76 (4)	039	040	1852	1.000
041	52.1587814	59.9896833	Fixed Point at 60 miles from the foot of the slope, 76 (4)	040	041	1852	1.000
042	52.1629870	59.9635019	Fixed Point at 60 miles from the foot of the slope, 76 (4)	041	042	1852	1.000
043	52.1669188	59.9372015	Fixed Point at 60 miles from the foot of the slope, 76 (4)	042	043	1852	1.000
044	52.1705741	59.9107978	Fixed Point at 60 miles from the foot of the slope, 76 (4)	043	044	1852	1.000
045	52.1739502	59.8842930	Fixed Point at 60 miles from the foot of the slope, 76 (4)	044	045	1852	1.000
046	52.1770499	59.8576916	Fixed Point at 60 miles from the foot of the slope, 76 (4)	045	046	1852	1.000
047	52.1798677	59.8310139	Fixed Point at 60 miles from the foot of the slope, 76 (4)	046	047	1852	1.000



## The French Continental Shelf

FP	Latitude South	Longitude East	Method, Article 76	from PF	to PF	Distance (m)	Distance (Miles)
048	52.1824093	59.8042576	Fixed Point at 60 miles from the foot of the slope, 76 (4)	047	048	1852	1.000
049	52.1846691	59.7774316	Fixed Point at 60 miles from the foot of the slope, 76 (4)	048	049	1852	1.000
050	52.1866472	59.7505451	Fixed Point at 60 miles from the foot of the slope, 76 (4)	049	050	1852	1.000
051	52.1883436	59.7236091	Fixed Point at 60 miles from the foot of the slope, 76 (4)	050	051	1852	1.000
052	52.1897612	59.6966304	Fixed Point at 60 miles from the foot of the slope, 76 (4)	051	052	1852	1.000
053	52.1908916	59.6696136	Fixed Point at 60 miles from the foot of the slope, 76 (4)	052	053	1852	1.000
054	52.1917432	59.6425653	Fixed Point at 60 miles from the foot of the slope, 76 (4)	053	054	1852	1.000
055	52.1923077	59.6155013	Fixed Point at 60 miles from the foot of the slope, 76 (4)	054	055	1852	1.000
056	52.1925893	59.5884216	Fixed Point at 60 miles from the foot of the slope, 76 (4)	055	056	1852	1.000
057	52.1925893	59.5670911	Fixed Point at 60 miles from the foot of the slope, 76 (4)	056	057	1459	0.788
058	52.1836241	59.5620673	Fixed Point at 350 miles from the baselines, 76 (5)	057	058	1611	0.870
059	52.1678993	59.5533446	Fixed Point at 350 miles from the baselines, 76 (5)	058	059	1848	0.998
060	52.1521579	59.5446939	Fixed Point at 350 miles from the baselines, 76 (5)	059	060	1848	0.998
061	52.1363998	59.5361262	Fixed Point at 350 miles from the baselines, 76 (5)	060	061	1848	0.998
062	52.1206278	59.5276371	Fixed Point at 350 miles from the baselines, 76 (5)	061	062	1848	0.998
063	52.1048391	59.5192221	Fixed Point at 350 miles from the baselines, 76 (5)	062	063	1848	0.998
064	52.0890366	59.5108880	Fixed Point at 350 miles from the baselines, 76 (5)	063	064	1848	0.998
065	52.0732173	59.5026347	Fixed Point at 350 miles from the baselines, 76 (5)	064	065	1848	0.998
066	52.0573854	59.4944601	Fixed Point at 350 miles from the baselines, 76 (5)	065	066	1848	0.998
067	52.0415355	59.4863685	Fixed Point at 350 miles from the baselines, 76 (5)	066	067	1848	0.998
068	52.0256730	59.4783488	Fixed Point at 350 miles from the baselines, 76 (5)	067	068	1848	0.998
069	52.0097937	59.4704099	Fixed Point at 350 miles from the baselines, 76 (5)	068	069	1848	0.998
070	51.9939046	59.4625519	Fixed Point at 350 miles from the baselines, 76 (5)	069	070	1848	0.998
071	51.9779974	59.4547680	Fixed Point at 350 miles from the baselines, 76 (5)	070	071	1848	0.998
072	51.9620775	59.4470694	Fixed Point at 350 miles from the baselines, 76 (5)	071	072	1848	0.998
073	51.9461409	59.4394450	Fixed Point at 350 miles from the baselines, 76 (5)	072	073	1848	0.998

## The French Continental Shelf

FP	Latitude South	Longitude East	Method, Article 76	from PF	to PF	Distance (m)	Distance (Miles)
074	51.9301944	59.4318969	Fixed Point at 350 miles from the baselines, 76 (5)	073	074	1848	0.998
075	51.9142311	59.4244341	Fixed Point at 350 miles from the baselines, 76 (5)	074	075	1848	0.998
076	51.8982551	59.4170455	Fixed Point at 350 miles from the baselines, 76 (5)	075	076	1848	0.998
077	51.8822679	59.4097355	Fixed Point at 350 miles from the baselines, 76 (5)	076	077	1848	0.998
078	51.8662652	59.4025085	Fixed Point at 350 miles from the baselines, 76 (5)	077	078	1848	0.998
079	51.8502484	59.3953534	Fixed Point at 350 miles from the baselines, 76 (5)	078	079	1848	0.998
080	51.8342218	59.3882792	Fixed Point at 350 miles from the baselines, 76 (5)	079	080	1848	0.998
081	51.8181768	59.3812858	Fixed Point at 350 miles from the baselines, 76 (5)	080	081	1848	0.998
082	51.8021248	59.3743733	Fixed Point at 350 miles from the baselines, 76 (5)	081	082	1848	0.998
083	51.7860572	59.3675349	Fixed Point at 350 miles from the baselines, 76 (5)	082	083	1848	0.998
084	51.7699811	59.3607750	Fixed Point at 350 miles from the baselines, 76 (5)	083	084	1848	0.998
085	51.7538881	59.3540961	Fixed Point at 350 miles from the baselines, 76 (5)	084	085	1848	0.998
086	51.7377838	59.3474934	Fixed Point at 350 miles from the baselines, 76 (5)	085	086	1848	0.998
087	51.7216681	59.3409694	Fixed Point at 350 miles from the baselines, 76 (5)	086	087	1848	0.998
088	51.7055410	59.3345240	Fixed Point at 350 miles from the baselines, 76 (5)	087	088	1848	0.998
089	51.6894026	59.3281550	Fixed Point at 350 miles from the baselines, 76 (5)	088	089	1848	0.998
090	51.6732528	59.3218668	Fixed Point at 350 miles from the baselines, 76 (5)	089	090	1848	0.998
091	51.6570902	59.3156571	Fixed Point at 350 miles from the baselines, 76 (5)	090	091	1848	0.998
092	51.6409177	59.3095284	Fixed Point at 350 miles from the baselines, 76 (5)	091	092	1848	0.998
093	51.6247309	59.3034737	Fixed Point at 350 miles from the baselines, 76 (5)	092	093	1848	0.998
094	51.6085398	59.2974932	Fixed Point at 350 miles from the baselines, 76 (5)	093	094	1848	0.998
095	51.5923303	59.2916003	Fixed Point at 350 miles from the baselines, 76 (5)	094	095	1848	0.998
096	51.5761163	59.2857814	Fixed Point at 350 miles from the baselines, 76 (5)	095	096	1848	0.998
097	51.5598867	59.2800412	Fixed Point at 350 miles from the baselines, 76 (5)	096	097	1848	0.998
098	51.5436499	59.2743751	Fixed Point at 350 miles from the baselines, 76 (5)	097	098	1848	0.998
099	51.5274017	59.2687898	Fixed Point at 350 miles from the baselines, 76 (5)	098	099	1848	0.998

## The French Continental Shelf

FP	Latitude South	Longitude East	Method, Article 76	from PF	to PF	Distance (m)	Distance (Miles)
100	51.5111434	59.2632854	Fixed Point at 350 miles from the baselines, 76 (5)	099	100	1848	0.998
101	51.4948737	59.2578551	Fixed Point at 350 miles from the baselines, 76 (5)	100	101	1848	0.998
102	51.4785968	59.2525056	Fixed Point at 350 miles from the baselines, 76 (5)	101	102	1848	0.998
103	51.4623098	59.2472302	Fixed Point at 350 miles from the baselines, 76 (5)	102	103	1848	0.998
104	51.4460099	59.2420335	Fixed Point at 350 miles from the baselines, 76 (5)	103	104	1848	0.998
105	51.4297042	59.2369176	Fixed Point at 350 miles from the baselines, 76 (5)	104	105	1848	0.998
106	51.4133884	59.2318780	Fixed Point at 350 miles from the baselines, 76 (5)	105	106	1848	0.998
107	50.5343470	58.5430993	Fixed Point at 350 miles from the baselines, 76 (5)	106	107	109101	58.910
108	50.5193312	58.5318277	Fixed Point at 100 miles from the 2500 m isobath, 76 (5)	107	108	1852	1.000
109	50.5193040	58.5318074	Fixed Point at 100 miles from the 2500 m isobath, 76 (5)	108	109	004	0.002
110	50.5181843	58.5309765	Fixed Point at 100 miles from the 2500 m isobath, 76 (5)	109	110	141	0.076
111	50.5030961	58.5199474	Fixed Point at 100 miles from the 2500 m isobath, 76 (5)	110	111	1852	1.000
112	50.4879371	58.5091632	Fixed Point at 100 miles from the 2500 m isobath, 76 (5)	111	112	1852	1.000
113	50.4727086	58.4986237	Fixed Point at 100 miles from the 2500 m isobath, 76 (5)	112	113	1852	1.000
114	50.4574137	58.4883312	Fixed Point at 100 miles from the 2500 m isobath, 76 (5)	113	114	1852	1.000
115	50.4420535	58.4782836	Fixed Point at 100 miles from the 2500 m isobath, 76 (5)	114	115	1852	1.000
116	50.4266280	58.4684830	Fixed Point at 100 miles from the 2500 m isobath, 76 (5)	115	116	1852	1.000
117	50.4111401	58.4589316	Fixed Point at 100 miles from the 2500 m isobath, 76 (5)	116	117	1852	1.000
118	50.3955911	58.4496296	Fixed Point at 100 miles from the 2500 m isobath, 76 (5)	117	118	1852	1.000
119	50.3903940	58.4466157	Fixed Point at 100 miles from the 2500 m isobath, 76 (5)	118	119	617	0.333
120	50.3186649	58.4814726	Fixed Point at 60 miles from the foot of the slope, 76 (4)	119	120	8356	4.512
121	50.3028438	58.4895529	Fixed Point at 60 miles from the foot of the slope, 76 (4)	120	121	1852	1.000
122	50.2871051	58.4980353	Fixed Point at 60 miles from the foot of the slope, 76 (4)	121	122	1852	1.000
123	50.2714634	58.5069264	Fixed Point at 60 miles from the foot of the slope, 76 (4)	122	123	1852	1.000
124	50.2559159	58.5162104	Fixed Point at 60 miles from the foot of the slope, 76 (4)	123	124	1852	1.000
125	50.2404655	58.5258920	Fixed Point at 60 miles from the foot of the slope, 76 (4)	124	125	1852	1.000

## The French Continental Shelf

FP	Latitude South	Longitude East	Method, Article 76	from PF	to PF	Distance (m)	Distance (Miles)
126	50.2251254	58.5359734	Fixed Point at 60 miles from the foot of the slope, 76 (4)	125	126	1852	1.000
127	50.2098927	58.5464410	Fixed Point at 60 miles from the foot of the slope, 76 (4)	126	127	1852	1.000
128	49.2922883	59.0957204	Fixed Point at 60 miles from the foot of the slope, 76 (4)	127	128	109466	59.107
129	49.2768345	59.1051976	Fixed Point at 60 miles from the foot of the slope, 76 (4)	128	129	1852	1.000
130	49.2614846	59.1150566	Fixed Point at 60 miles from the foot of the slope, 76 (4)	129	130	1852	1.000
131	49.2462416	59.1253064	Fixed Point at 60 miles from the foot of the slope, 76 (4)	130	131	1852	1.000
132	49.2311174	59.1359335	Fixed Point at 60 miles from the foot of the slope, 76 (4)	131	132	1852	1.000
133	49.2161048	59.1469423	Fixed Point at 60 miles from the foot of the slope, 76 (4)	132	133	1852	1.000
134	49.2012171	59.1583150	Fixed Point at 60 miles from the foot of the slope, 76 (4)	133	134	1852	1.000
135	48.2403212	59.4340461	Fixed Point at 60 miles from the foot of the slope, 76 (4)	134	135	108764	58.728
136	48.2239440	59.4385557	Fixed Point at 60 miles from the foot of the slope, 76 (4)	135	136	1852	1.000
137	48.2076142	59.4434672	Fixed Point at 60 miles from the foot of the slope, 76 (4)	136	137	1852	1.000
138	47.6085759	59.6306245	Fixed Point at 60 miles from the foot of the slope, 76 (4)	137	138	68059	36.749
139	47.5923001	59.6358684	Fixed Point at 60 miles from the foot of the slope, 76 (4)	138	139	1852	1.000
140	47.5760907	59.6415098	Fixed Point at 60 miles from the foot of the slope, 76 (4)	139	140	1852	1.000
141	47.5599431	59.6475465	Fixed Point at 60 miles from the foot of the slope, 76 (4)	140	141	1852	1.000
142	47.5438651	59.6539762	Fixed Point at 60 miles from the foot of the slope, 76 (4)	141	142	1852	1.000
143	47.5278627	59.6607966	Fixed Point at 60 miles from the foot of the slope, 76 (4)	142	143	1852	1.000
144	47.5119390	59.6680078	Fixed Point at 60 miles from the foot of the slope, 76 (4)	143	144	1852	1.000
145	47.4960927	59.6756053	Fixed Point at 60 miles from the foot of the slope, 76 (4)	144	145	1852	1.000
146	47.4803390	59.6835824	Fixed Point at 60 miles from the foot of the slope, 76 (4)	145	146	1852	1.000
147	47.4646780	59.6919479	Fixed Point at 60 miles from the foot of the slope, 76 (4)	146	147	1852	1.000
148	47.4491113	59.7006818	Fixed Point at 60 miles from the foot of the slope, 76 (4)	147	148	1852	1.000
149	47.4336452	59.7098020	Fixed Point at 60 miles from the foot of the slope, 76 (4)	148	149	1852	1.000
150	47.4182842	59.7192837	Fixed Point at 60 miles from the foot of the slope, 76 (4)	149	150	1852	1.000
151	47.4030300	59.7291449	Fixed Point at 60 miles from the foot of the slope, 76 (4)	150	151	1852	1.000

## The French Continental Shelf

FP	Latitude South	Longitude East	Method, Article 76	from PF	to PF	Distance (m)	Distance (Miles)
152	47.3878904	59.7393700	Fixed Point at 60 miles from the foot of the slope, 76 (4)	151	152	1852	1.000
153	47.3728684	59.7499656	Fixed Point at 60 miles from the foot of the slope, 76 (4)	152	153	1852	1.000
154	47.3579626	59.7609116	Fixed Point at 60 miles from the foot of the slope, 76 (4)	153	154	1852	1.000
155	47.3431839	59.7722236	Fixed Point at 60 miles from the foot of the slope, 76 (4)	154	155	1852	1.000
156	47.3285354	59.7838815	Fixed Point at 60 miles from the foot of the slope, 76 (4)	155	156	1852	1.000
157	47.3140203	59.7958987	Fixed Point at 60 miles from the foot of the slope, 76 (4)	156	157	1852	1.000
158	47.2996417	59.8082596	Fixed Point at 60 miles from the foot of the slope, 76 (4)	157	158	1852	1.000
159	47.2854013	59.8209617	Fixed Point at 60 miles from the foot of the slope, 76 (4)	158	159	1852	1.000
160	47.2713084	59.8340098	Fixed Point at 60 miles from the foot of the slope, 76 (4)	159	160	1852	1.000
161	47.2573615	59.8473924	Fixed Point at 60 miles from the foot of the slope, 76 (4)	160	161	1852	1.000
162	47.2435684	59.8611075	Fixed Point at 60 miles from the foot of the slope, 76 (4)	161	162	1852	1.000
163	47.2299309	59.8751504	Fixed Point at 60 miles from the foot of the slope, 76 (4)	162	163	1852	1.000
164	47.2164504	59.8895144	Fixed Point at 60 miles from the foot of the slope, 76 (4)	163	164	1852	1.000
165	47.2031349	59.9042041	Fixed Point at 60 miles from the foot of the slope, 76 (4)	164	165	1852	1.000
166	47.1899890	59.9192060	Fixed Point at 60 miles from the foot of the slope, 76 (4)	165	166	1852	1.000
167	47.1770067	59.9345200	Fixed Point at 60 miles from the foot of the slope, 76 (4)	166	167	1852	1.000
168	47.1642036	59.9501440	Fixed Point at 60 miles from the foot of the slope, 76 (4)	167	168	1852	1.000
169	47.1515750	59.9660711	Fixed Point at 60 miles from the foot of the slope, 76 (4)	168	169	1852	1.000
170	47.1391273	59.9822947	Fixed Point at 60 miles from the foot of the slope, 76 (4)	169	170	1852	1.000
171	47.1268636	59.9988147	Fixed Point at 60 miles from the foot of the slope, 76 (4)	170	171	1852	1.000
172	47.1147857	60.0156199	Fixed Point at 60 miles from the foot of the slope, 76 (4)	171	172	1852	1.000
173	47.1028998	60.0327126	Fixed Point at 60 miles from the foot of the slope, 76 (4)	172	173	1852	1.000
174	47.0912090	60.0500860	Fixed Point at 60 miles from the foot of the slope, 76 (4)	173	174	1852	1.000
175	47.0797105	60.0677357	Fixed Point at 60 miles from the foot of the slope, 76 (4)	174	175	1852	1.000
176	47.0684152	60.0856593	Fixed Point at 60 miles from the foot of the slope, 76 (4)	175	176	1852	1.000
177	47.0573215	60.1038412	Fixed Point at 60 miles from the foot of the slope, 76 (4)	176	177	1852	1.000

## The French Continental Shelf

FP	Latitude South	Longitude East	Method, Article 76	from PF	to PF	Distance (m)	Distance (Miles)
178	47.0464312	60.1222881	Fixed Point at 60 miles from the foot of the slope, 76 (4)	177	178	1852	1.000
179	47.0357552	60.1409888	Fixed Point at 60 miles from the foot of the slope, 76 (4)	178	179	1852	1.000
180	47.0252828	60.1599365	Fixed Point at 60 miles from the foot of the slope, 76 (4)	179	180	1852	1.000
181	47.0150295	60.1791313	Fixed Point at 60 miles from the foot of the slope, 76 (4)	180	181	1852	1.000
182	47.0049924	60.1985686	Fixed Point at 60 miles from the foot of the slope, 76 (4)	181	182	1852	1.000
183	46.9951747	60.2182394	Fixed Point at 60 miles from the foot of the slope, 76 (4)	182	183	1852	1.000
184	46.9855780	60.2381394	Fixed Point at 60 miles from the foot of the slope, 76 (4)	183	184	1852	1.000
185	46.9762085	60.2582661	Fixed Point at 60 miles from the foot of the slope, 76 (4)	184	185	1852	1.000
186	46.9670665	60.2786040	Fixed Point at 60 miles from the foot of the slope, 76 (4)	185	186	1852	1.000
187	46.9581505	60.2991574	Fixed Point at 60 miles from the foot of the slope, 76 (4)	186	187	1852	1.000
188	46.9494699	60.3199220	Fixed Point at 60 miles from the foot of the slope, 76 (4)	187	188	1852	1.000
189	46.9410201	60.3408842	Fixed Point at 60 miles from the foot of the slope, 76 (4)	188	189	1852	1.000
190	46.9346364	60.3573436	Fixed Point at 60 miles from the foot of the slope, 76 (4)	189	190	1441	0.778
191	46.1392868	61.2254193	Fixed Point at 60 miles from the foot of the slope, 76 (4)	190	191	110683	59.764
192	46.1311994	61.2281457	Fixed Point at 60 miles from the foot of the slope, 76 (4)	191	192	924	0.499
193	46.1150429	61.2340027	Fixed Point at 60 miles from the foot of the slope, 76 (4)	192	193	1852	1.000
194	46.0989581	61.2402415	Fixed Point at 60 miles from the foot of the slope, 76 (4)	193	194	1852	1.000
195	46.0829468	61.2468643	Fixed Point at 60 miles from the foot of the slope, 76 (4)	194	195	1852	1.000
196	46.0670121	61.2538645	Fixed Point at 60 miles from the foot of the slope, 76 (4)	195	196	1852	1.000
197	46.0511634	61.2612351	Fixed Point at 60 miles from the foot of the slope, 76 (4)	196	197	1852	1.000
198	46.0353994	61.2689876	Fixed Point at 60 miles from the foot of the slope, 76 (4)	197	198	1852	1.000
199	46.0197309	61.2771061	Fixed Point at 60 miles from the foot of the slope, 76 (4)	198	199	1852	1.000
200	46.0041518	61.2855952	Fixed Point at 60 miles from the foot of the slope, 76 (4)	199	200	1852	1.000
201	45.9886780	61.2944481	Fixed Point at 60 miles from the foot of the slope, 76 (4)	200	201	1852	1.000
202	45.9733062	61.3036715	Fixed Point at 60 miles from the foot of the slope, 76 (4)	201	202	1852	1.000
203	45.9580461	61.3132543	Fixed Point at 60 miles from the foot of the slope, 76 (4)	202	203	1852	1.000

## The French Continental Shelf

FP	Latitude South	Longitude East	Method, Article 76	from PF	to PF	Distance (m)	Distance (Miles)
204	45.9428945	61.3231874	Fixed Point at 60 miles from the foot of the slope, 76 (4)	203	204	1852	1.000
205	45.5551919	61.5858211	Fixed Point at 60 miles from the foot of the slope, 76 (4)	204	205	47693	25.752
206	45.5401555	61.5960395	Fixed Point at 60 miles from the foot of the slope, 76 (4)	205	206	1852	1.000
207	45.5252398	61.6066037	Fixed Point at 60 miles from the foot of the slope, 76 (4)	206	207	1852	1.000
208	45.5104480	61.6175204	Fixed Point at 60 miles from the foot of the slope, 76 (4)	207	208	1852	1.000
209	45.4957850	61.6287763	Fixed Point at 60 miles from the foot of the slope, 76 (4)	208	209	1852	1.000
210	45.4812587	61.6403736	Fixed Point at 60 miles from the foot of the slope, 76 (4)	209	210	1852	1.000
211	45.4668630	61.6523077	Fixed Point at 60 miles from the foot of the slope, 76 (4)	210	211	1852	1.000
212	45.4526105	61.6645720	Fixed Point at 60 miles from the foot of the slope, 76 (4)	211	212	1852	1.000
213	45.4385031	61.6771686	Fixed Point at 60 miles from the foot of the slope, 76 (4)	212	213	1852	1.000
214	45.4245439	61.6900931	Fixed Point at 60 miles from the foot of the slope, 76 (4)	213	214	1852	1.000
215	45.4107395	61.7033388	Fixed Point at 60 miles from the foot of the slope, 76 (4)	214	215	1852	1.000
216	45.3970867	61.7168988	Fixed Point at 60 miles from the foot of the slope, 76 (4)	215	216	1852	1.000
217	45.3835920	61.7307755	Fixed Point at 60 miles from the foot of the slope, 76 (4)	216	217	1852	1.000
218	45.3702650	61.7449667	Fixed Point at 60 miles from the foot of the slope, 76 (4)	217	218	1852	1.000
219	45.3571027	61.7594588	Fixed Point at 60 miles from the foot of the slope, 76 (4)	218	219	1852	1.000
220	45.3441083	61.7742563	Fixed Point at 60 miles from the foot of the slope, 76 (4)	219	220	1852	1.000
221	45.3312900	61.7893479	Fixed Point at 60 miles from the foot of the slope, 76 (4)	220	221	1852	1.000
222	45.3186477	61.8047383	Fixed Point at 60 miles from the foot of the slope, 76 (4)	221	222	1852	1.000
223	45.3061881	61.8204117	Fixed Point at 60 miles from the foot of the slope, 76 (4)	222	223	1852	1.000
224	45.2939111	61.8363770	Fixed Point at 60 miles from the foot of the slope, 76 (4)	223	224	1852	1.000
225	45.2818186	61.8526230	Fixed Point at 60 miles from the foot of the slope, 76 (4)	224	225	1852	1.000
226	45.2699185	61.8691430	Fixed Point at 60 miles from the foot of the slope, 76 (4)	225	226	1852	1.000
227	45.2582126	61.8859348	Fixed Point at 60 miles from the foot of the slope, 76 (4)	226	227	1852	1.000
228	45.2467009	61.9029938	Fixed Point at 60 miles from the foot of the slope, 76 (4)	227	228	1852	1.000
229	45.2353932	61.9203156	Fixed Point at 60 miles from the foot of the slope, 76 (4)	228	229	1852	1.000

## The French Continental Shelf

FP	Latitude South	Longitude East	Method, Article 76	from PF	to PF	Distance (m)	Distance (Miles)
230	45.2242864	61.9378934	Fixed Point at 60 miles from the foot of the slope, 76 (4)	229	230	1852	1.000
231	45.2133838	61.9557227	Fixed Point at 60 miles from the foot of the slope, 76 (4)	230	231	1852	1.000
232	45.2026933	61.9738058	Fixed Point at 60 miles from the foot of the slope, 76 (4)	231	232	1852	1.000
233	45.1922105	61.9921224	Fixed Point at 60 miles from the foot of the slope, 76 (4)	232	233	1852	1.000
234	45.1819433	62.0106816	Fixed Point at 60 miles from the foot of the slope, 76 (4)	233	234	1852	1.000
235	45.1718935	62.0294766	Fixed Point at 60 miles from the foot of the slope, 76 (4)	234	235	1852	1.000
236	45.1620643	62.0484984	Fixed Point at 60 miles from the foot of the slope, 76 (4)	235	236	1852	1.000
237	45.1524559	62.0677426	Fixed Point at 60 miles from the foot of the slope, 76 (4)	236	237	1852	1.000
238	45.1430700	62.0871979	Fixed Point at 60 miles from the foot of the slope, 76 (4)	237	238	1852	1.000
239	45.1339193	62.1068732	Fixed Point at 60 miles from the foot of the slope, 76 (4)	238	239	1852	1.000
240	45.1249930	62.1267484	Fixed Point at 60 miles from the foot of the slope, 76 (4)	239	240	1852	1.000
241	45.1162974	62.1468258	Fixed Point at 60 miles from the foot of the slope, 76 (4)	240	241	1852	1.000
242	45.1078374	62.1671030	Fixed Point at 60 miles from the foot of the slope, 76 (4)	241	242	1852	1.000
243	45.0996163	62.1875711	Fixed Point at 60 miles from the foot of the slope, 76 (4)	242	243	1852	1.000
244	45.0916295	62.2082166	Fixed Point at 60 miles from the foot of the slope, 76 (4)	243	244	1852	1.000
245	45.0838881	62.2290508	Fixed Point at 60 miles from the foot of the slope, 76 (4)	244	245	1852	1.000
246	45.0763908	62.2500557	Fixed Point at 60 miles from the foot of the slope, 76 (4)	245	246	1852	1.000
247	45.0691359	62.2712267	Fixed Point at 60 miles from the foot of the slope, 76 (4)	246	247	1852	1.000
248	45.0621269	62.2925595	Fixed Point at 60 miles from the foot of the slope, 76 (4)	247	248	1852	1.000
249	45.0553700	62.3140472	Fixed Point at 60 miles from the foot of the slope, 76 (4)	248	249	1852	1.000
250	45.0488623	62.3356876	Fixed Point at 60 miles from the foot of the slope, 76 (4)	249	250	1852	1.000
251	45.0426086	62.3574785	Fixed Point at 60 miles from the foot of the slope, 76 (4)	250	251	1852	1.000
252	45.0366042	62.3794041	Fixed Point at 60 miles from the foot of the slope, 76 (4)	251	252	1852	1.000
253	45.0308604	62.4014667	Fixed Point at 60 miles from the foot of the slope, 76 (4)	252	253	1852	1.000
254	45.0253708	62.4236506	Fixed Point at 60 miles from the foot of the slope, 76 (4)	253	254	1852	1.000
255	45.0201403	62.4459603	Fixed Point at 60 miles from the foot of the slope, 76 (4)	254	255	1852	1.000



## The French Continental Shelf

FP	Latitude South	Longitude East	Method, Article 76	from PF	to PF	Distance (m)	Distance (Miles)
256	45.0151705	62.4683867	Fixed Point at 60 miles from the foot of the slope, 76 (4)	255	256	1852	1.000
257	45.0104648	62.4909165	Fixed Point at 60 miles from the foot of the slope, 76 (4)	256	257	1852	1.000
258	45.0060151	62.5135585	Fixed Point at 60 miles from the foot of the slope, 76 (4)	257	258	1852	1.000
259	45.0018345	62.5362949	Fixed Point at 60 miles from the foot of the slope, 76 (4)	258	259	1852	1.000
260	44.9979164	62.5591233	Fixed Point at 60 miles from the foot of the slope, 76 (4)	259	260	1852	1.000
261	44.9942641	62.5820371	Fixed Point at 60 miles from the foot of the slope, 76 (4)	260	261	1852	1.000
262	44.9908794	62.6050317	Fixed Point at 60 miles from the foot of the slope, 76 (4)	261	262	1852	1.000
263	44.9877638	62.6281004	Fixed Point at 60 miles from the foot of the slope, 76 (4)	262	263	1852	1.000
264	44.9849126	62.6512365	Fixed Point at 60 miles from the foot of the slope, 76 (4)	263	264	1852	1.000
265	44.9823353	62.6744355	Fixed Point at 60 miles from the foot of the slope, 76 (4)	264	265	1852	1.000
266	44.9800242	62.6976884	Fixed Point at 60 miles from the foot of the slope, 76 (4)	265	266	1852	1.000
267	44.9779855	62.7209930	Fixed Point at 60 miles from the foot of the slope, 76 (4)	266	267	1852	1.000
268	44.9762178	62.7443335	Fixed Point at 60 miles from the foot of the slope, 76 (4)	267	268	1852	1.000
269	44.9747194	62.7677166	Fixed Point at 60 miles from the foot of the slope, 76 (4)	268	269	1852	1.000
270	44.9734951	62.7911312	Fixed Point at 60 miles from the foot of the slope, 76 (4)	269	270	1852	1.000
271	44.9725434	62.8145705	Fixed Point at 60 miles from the foot of the slope, 76 (4)	270	271	1852	1.000
272	44.9718643	62.8380210	Fixed Point at 60 miles from the foot of the slope, 76 (4)	271	272	1852	1.000
273	44.9714562	62.8614917	Fixed Point at 60 miles from the foot of the slope, 76 (4)	272	273	1852	1.000
274	44.9713239	62.8847581	Fixed Point at 60 miles from the foot of the slope, 76 (4)	273	274	1852	1.000
275	44.9714610	62.9082356	Fixed Point at 60 miles from the foot of the slope, 76 (4)	274	275	1852	1.000
276	44.9718675	62.9316996	Fixed Point at 60 miles from the foot of the slope, 76 (4)	275	276	1852	1.000
277	44.9725530	62.9551568	Fixed Point at 60 miles from the foot of the slope, 76 (4)	276	277	1852	1.000
278	44.9735047	62.9785961	Fixed Point at 60 miles from the foot of the slope, 76 (4)	277	278	1852	1.000
279	44.9747321	63.0020107	Fixed Point at 60 miles from the foot of the slope, 76 (4)	278	279	1852	1.000
280	44.9762321	63.0253894	Fixed Point at 60 miles from the foot of the slope, 76 (4)	279	280	1852	1.000
281	44.9780031	63.0487343	Fixed Point at 60 miles from the foot of the slope, 76 (4)	280	281	1852	1.000

## The French Continental Shelf

FP	Latitude South	Longitude East	Method, Article 76	from PF	to PF	Distance (m)	Distance (Miles)
282	44.9800417	63.0720389	Fixed Point at 60 miles from the foot of the slope, 76 (4)	281	282	1852	1.000
283	44.9823529	63.0952873	Fixed Point at 60 miles from the foot of the slope, 76 (4)	282	283	1852	1.000
284	44.9849349	63.1184840	Fixed Point at 60 miles from the foot of the slope, 76 (4)	283	284	1852	1.000
285	44.9877893	63.1416224	Fixed Point at 60 miles from the foot of the slope, 76 (4)	284	285	1852	1.000
286	44.9909065	63.1646911	Fixed Point at 60 miles from the foot of the slope, 76 (4)	285	286	1852	1.000
287	44.9942944	63.1876857	Fixed Point at 60 miles from the foot of the slope, 76 (4)	286	287	1852	1.000
288	44.9979514	63.2105995	Fixed Point at 60 miles from the foot of the slope, 76 (4)	287	288	1852	1.000
289	45.0018695	63.2334257	Fixed Point at 60 miles from the foot of the slope, 76 (4)	288	289	1852	1.000
290	45.0060550	63.2561621	Fixed Point at 60 miles from the foot of the slope, 76 (4)	289	290	1852	1.000
291	45.0105030	63.2787974	Fixed Point at 60 miles from the foot of the slope, 76 (4)	290	291	1852	1.000
292	45.0152151	63.3013361	Fixed Point at 60 miles from the foot of the slope, 76 (4)	291	292	1852	1.000
293	45.0201880	63.3237558	Fixed Point at 60 miles from the foot of the slope, 76 (4)	292	293	1852	1.000
294	45.0254201	63.3460632	Fixed Point at 60 miles from the foot of the slope, 76 (4)	293	294	1852	1.000
295	45.0309082	63.3682493	Fixed Point at 60 miles from the foot of the slope, 76 (4)	294	295	1852	1.000
296	45.0366568	63.3903120	Fixed Point at 60 miles from the foot of the slope, 76 (4)	295	296	1852	1.000
297	45.0426612	63.4122376	Fixed Point at 60 miles from the foot of the slope, 76 (4)	296	297	1852	1.000
298	45.0489196	63.4340195	Fixed Point at 60 miles from the foot of the slope, 76 (4)	297	298	1852	1.000
299	45.0554273	63.4556622	Fixed Point at 60 miles from the foot of the slope, 76 (4)	298	299	1852	1.000
300	45.0583323	63.4648968	Fixed Point at 60 miles from the foot of the slope, 76 (4)	299	300	796	0.430
301	44.8420262	64.8272099	Fixed Point at 60 miles from the foot of the slope, 76 (4)	300	301	110161	59.482
302	44.8268165	64.8460588	Fixed Point at 60 miles from the foot of the slope, 76 (4)	301	302	2254	1.217
303	44.8145362	64.8618872	Fixed Point at 60 miles from the foot of the slope, 76 (4)	302	303	1852	1.000
304	44.8024419	64.8779939	Fixed Point at 60 miles from the foot of the slope, 76 (4)	303	304	1852	1.000
305	44.7905385	64.8943702	Fixed Point at 60 miles from the foot of the slope, 76 (4)	304	305	1852	1.000
306	44.7788263	64.9110205	Fixed Point at 60 miles from the foot of the slope, 76 (4)	305	306	1852	1.000
307	44.7673132	64.9279358	Fixed Point at 60 miles from the foot of the slope, 76 (4)	306	307	1852	1.000

## The French Continental Shelf

FP	Latitude South	Longitude East	Method, Article 76	from PF	to PF	Distance (m)	Distance (Miles)
308	44.7560010	64.9451116	Fixed Point at 60 miles from the foot of the slope, 76 (4)	307	308	1852	1.000
309	44.7448899	64.9625389	Fixed Point at 60 miles from the foot of the slope, 76 (4)	308	309	1852	1.000
310	44.7339831	64.9802200	Fixed Point at 60 miles from the foot of the slope, 76 (4)	309	310	1852	1.000
311	44.7232905	64.9981504	Fixed Point at 60 miles from the foot of the slope, 76 (4)	310	311	1852	1.000
312	44.7128023	65.0163120	Fixed Point at 60 miles from the foot of the slope, 76 (4)	311	312	1852	1.000
313	44.7025317	65.0347163	Fixed Point at 60 miles from the foot of the slope, 76 (4)	312	313	1852	1.000
314	44.6924820	65.0533496	Fixed Point at 60 miles from the foot of the slope, 76 (4)	313	314	1852	1.000
315	44.6826484	65.0722120	Fixed Point at 60 miles from the foot of the slope, 76 (4)	314	315	1852	1.000
316	44.6730342	65.0912944	Fixed Point at 60 miles from the foot of the slope, 76 (4)	315	316	1852	1.000
317	44.6636493	65.1105880	Fixed Point at 60 miles from the foot of the slope, 76 (4)	316	317	1852	1.000
318	44.6544904	65.1300927	Fixed Point at 60 miles from the foot of the slope, 76 (4)	317	318	1852	1.000
319	44.6455642	65.1498062	Fixed Point at 60 miles from the foot of the slope, 76 (4)	318	319	1852	1.000
320	44.6368659	65.1697196	Fixed Point at 60 miles from the foot of the slope, 76 (4)	319	320	1852	1.000
321	44.6284052	65.1898216	Fixed Point at 60 miles from the foot of the slope, 76 (4)	320	321	1852	1.000
322	44.6201775	65.2101168	Fixed Point at 60 miles from the foot of the slope, 76 (4)	321	322	1852	1.000
323	44.6121940	65.2305962	Fixed Point at 60 miles from the foot of the slope, 76 (4)	322	323	1852	1.000
324	44.6044485	65.2512552	Fixed Point at 60 miles from the foot of the slope, 76 (4)	323	324	1852	1.000
325	44.5969458	65.2720826	Fixed Point at 60 miles from the foot of the slope, 76 (4)	324	325	1852	1.000
326	44.5896877	65.2930740	Fixed Point at 60 miles from the foot of the slope, 76 (4)	325	326	1852	1.000
327	44.5826775	65.3142338	Fixed Point at 60 miles from the foot of the slope, 76 (4)	326	327	1852	1.000
328	44.5759168	65.3355486	Fixed Point at 60 miles from the foot of the slope, 76 (4)	327	328	1852	1.000
329	44.5694074	65.3570116	Fixed Point at 60 miles from the foot of the slope, 76 (4)	328	329	1852	1.000
330	44.5631493	65.3786161	Fixed Point at 60 miles from the foot of the slope, 76 (4)	329	330	1852	1.000
331	44.5571474	65.4003553	Fixed Point at 60 miles from the foot of the slope, 76 (4)	330	331	1852	1.000
332	44.5514003	65.4222383	Fixed Point at 60 miles from the foot of the slope, 76 (4)	331	332	1852	1.000
333	44.5459079	65.4442380	Fixed Point at 60 miles from the foot of the slope, 76 (4)	332	333	1852	1.000

## The French Continental Shelf

FP	Latitude South	Longitude East	Method, Article 76	from PF	to PF	Distance (m)	Distance (Miles)
334	44.5406769	65.4663613	Fixed Point at 60 miles from the foot of the slope, 76 (4)	333	334	1852	1.000
335	44.5357056	65.4886036	Fixed Point at 60 miles from the foot of the slope, 76 (4)	334	335	1852	1.000
336	44.5309957	65.5109536	Fixed Point at 60 miles from the foot of the slope, 76 (4)	335	336	1852	1.000
337	44.5265457	65.5334048	Fixed Point at 60 miles from the foot of the slope, 76 (4)	336	337	1852	1.000
338	44.5223604	65.5559547	Fixed Point at 60 miles from the foot of the slope, 76 (4)	337	338	1852	1.000
339	44.5184432	65.5785923	Fixed Point at 60 miles from the foot of the slope, 76 (4)	338	339	1852	1.000
340	44.5147876	65.6013197	Fixed Point at 60 miles from the foot of the slope, 76 (4)	339	340	1852	1.000
341	44.5114018	65.6241234	Fixed Point at 60 miles from the foot of the slope, 76 (4)	340	341	1852	1.000
342	44.5082858	65.6470012	Fixed Point at 60 miles from the foot of the slope, 76 (4)	341	342	1852	1.000
343	44.5054332	65.6699465	Fixed Point at 60 miles from the foot of the slope, 76 (4)	342	343	1852	1.000
344	44.5037890	65.6846137	Fixed Point at 60 miles from the foot of the slope, 76 (4)	343	344	1180	0.637
345	43.7578646	66.5882066	Fixed Point at 60 miles from the foot of the slope, 76 (4)	344	345	109994	59.392
346	43.7532627	66.5882874	Fixed Point at 60 miles from the foot of the slope, 76 (4)	345	346	511	0.276
347	43.7366054	66.5889612	Fixed Point at 60 miles from the foot of the slope, 76 (4)	346	347	1852	1.000
348	43.7199532	66.5900167	Fixed Point at 60 miles from the foot of the slope, 76 (4)	347	348	1852	1.000
349	43.7033175	66.5914495	Fixed Point at 60 miles from the foot of the slope, 76 (4)	348	349	1852	1.000
350	43.6867017	66.5932731	Fixed Point at 60 miles from the foot of the slope, 76 (4)	349	350	1852	1.000
351	43.6701105	66.5954672	Fixed Point at 60 miles from the foot of the slope, 76 (4)	350	351	1852	1.000
352	43.6535473	66.5980476	Fixed Point at 60 miles from the foot of the slope, 76 (4)	351	352	1852	1.000
353	43.6370203	66.6010008	Fixed Point at 60 miles from the foot of the slope, 76 (4)	352	353	1852	1.000
354	43.6205279	66.6043313	Fixed Point at 60 miles from the foot of the slope, 76 (4)	353	354	1852	1.000
355	43.6040815	66.6080436	Fixed Point at 60 miles from the foot of the slope, 76 (4)	354	355	1852	1.000
356	43.5876779	66.6121220	Fixed Point at 60 miles from the foot of the slope, 76 (4)	355	356	1852	1.000
357	43.5713302	66.6165821	Fixed Point at 60 miles from the foot of the slope, 76 (4)	356	357	1852	1.000
358	43.5550353	66.6214083	Fixed Point at 60 miles from the foot of the slope, 76 (4)	357	358	1852	1.000
359	43.5387996	66.6266028	Fixed Point at 60 miles from the foot of the slope, 76 (4)	358	359	1852	1.000

## The French Continental Shelf

FP	Latitude South	Longitude East	Method, Article 76	from PF	to PF	Distance (m)	Distance (Miles)
360	43.5226314	66.6321701	Fixed Point at 60 miles from the foot of the slope, 76 (4)	359	360	1852	1.000
361	43.5065307	66.6381080	Fixed Point at 60 miles from the foot of the slope, 76 (4)	360	361	1852	1.000
362	43.4905075	66.6444029	Fixed Point at 60 miles from the foot of the slope, 76 (4)	361	362	1852	1.000
363	43.4745602	66.6510617	Fixed Point at 60 miles from the foot of the slope, 76 (4)	362	363	1852	1.000
364	43.4586937	66.6580798	Fixed Point at 60 miles from the foot of the slope, 76 (4)	363	364	1852	1.000
365	43.4429179	66.6654572	Fixed Point at 60 miles from the foot of the slope, 76 (4)	364	365	1852	1.000
366	43.4272328	66.6731917	Fixed Point at 60 miles from the foot of the slope, 76 (4)	365	366	1852	1.000
367	43.4116371	66.6812788	Fixed Point at 60 miles from the foot of the slope, 76 (4)	366	367	1852	1.000
368	43.3961469	66.6897185	Fixed Point at 60 miles from the foot of the slope, 76 (4)	367	368	1852	1.000
369	43.3807593	66.6985040	Fixed Point at 60 miles from the foot of the slope, 76 (4)	368	369	1852	1.000
370	43.3654825	66.7076331	Fixed Point at 60 miles from the foot of the slope, 76 (4)	369	370	1852	1.000
371	43.3503132	66.7171103	Fixed Point at 60 miles from the foot of the slope, 76 (4)	370	371	1852	1.000
372	43.3352614	66.7269289	Fixed Point at 60 miles from the foot of the slope, 76 (4)	371	372	1852	1.000
373	43.3203337	66.7370776	Fixed Point at 60 miles from the foot of the slope, 76 (4)	372	373	1852	1.000
374	43.2908479	66.7583857	Fixed Point at 60 miles from the foot of the slope, 76 (4)	373	374	1852	1.000
375	43.2763063	66.7695315	Fixed Point at 60 miles from the foot of the slope, 76 (4)	374	375	1852	1.000
376	43.2618991	66.7810053	Fixed Point at 60 miles from the foot of the slope, 76 (4)	375	376	1852	1.000
377	43.2476313	66.7927979	Fixed Point at 60 miles from the foot of the slope, 76 (4)	376	377	1852	1.000
378	43.2335063	66.8049072	Fixed Point at 60 miles from the foot of the slope, 76 (4)	377	378	1852	1.000
379	43.2195340	66.8173376	Fixed Point at 60 miles from the foot of the slope, 76 (4)	378	379	1852	1.000
380	43.2057113	66.8300690	Fixed Point at 60 miles from the foot of the slope, 76 (4)	379	380	1852	1.000
381	43.1920431	66.8431125	Fixed Point at 60 miles from the foot of the slope, 76 (4)	380	381	1852	1.000
382	43.1785346	66.8564615	Fixed Point at 60 miles from the foot of the slope, 76 (4)	381	382	1852	1.000
383	43.1651908	66.8701092	Fixed Point at 60 miles from the foot of the slope, 76 (4)	382	383	1852	1.000
384	43.1520117	66.8840533	Fixed Point at 60 miles from the foot of the slope, 76 (4)	383	384	1852	1.000
385	43.1390008	66.8982871	Fixed Point at 60 miles from the foot of the slope, 76 (4)	384	385	1852	1.000

## The French Continental Shelf

FP	Latitude South	Longitude East	Method, Article 76	from PF	to PF	Distance (m)	Distance (Miles)
386	43.1261698	66.9128128	Fixed Point at 60 miles from the foot of the slope, 76 (4)	385	386	1852	1.000
387	43.1135104	66.9276215	Fixed Point at 60 miles from the foot of the slope, 76 (4)	386	387	1852	1.000
388	43.1010360	66.9427065	Fixed Point at 60 miles from the foot of the slope, 76 (4)	387	388	1852	1.000
389	43.0887433	66.9580654	Fixed Point at 60 miles from the foot of the slope, 76 (4)	388	389	1852	1.000
390	43.0766342	66.9737029	Fixed Point at 60 miles from the foot of the slope, 76 (4)	389	390	1852	1.000
391	43.0647171	66.9896053	Fixed Point at 60 miles from the foot of the slope, 76 (4)	390	391	1852	1.000
392	43.0529985	67.0057660	Fixed Point at 60 miles from the foot of the slope, 76 (4)	391	392	1852	1.000
393	43.0414703	67.0221872	Fixed Point at 60 miles from the foot of the slope, 76 (4)	392	393	1852	1.000
394	43.0301460	67.0388622	Fixed Point at 60 miles from the foot of the slope, 76 (4)	393	394	1852	1.000
395	43.0190272	67.0557842	Fixed Point at 60 miles from the foot of the slope, 76 (4)	394	395	1852	1.000
396	43.0081090	67.0729510	Fixed Point at 60 miles from the foot of the slope, 76 (4)	395	396	1852	1.000
397	42.9974000	67.0903558	Fixed Point at 60 miles from the foot of the slope, 76 (4)	396	397	1852	1.000
398	42.9869050	67.1079988	Fixed Point at 60 miles from the foot of the slope, 76 (4)	397	398	1852	1.000
399	42.9766226	67.1258730	Fixed Point at 60 miles from the foot of the slope, 76 (4)	398	399	1852	1.000
400	42.9665594	67.1439673	Fixed Point at 60 miles from the foot of the slope, 76 (4)	399	400	1852	1.000
401	42.9567140	67.1622862	Fixed Point at 60 miles from the foot of the slope, 76 (4)	400	401	1852	1.000
402	42.9470931	67.1808140	Fixed Point at 60 miles from the foot of the slope, 76 (4)	401	402	1852	1.000
403	42.9376966	67.1995573	Fixed Point at 60 miles from the foot of the slope, 76 (4)	402	403	1852	1.000
404	42.9285265	67.2185005	Fixed Point at 60 miles from the foot of the slope, 76 (4)	403	404	1852	1.000
405	42.9195878	67.2376459	Fixed Point at 60 miles from the foot of the slope, 76 (4)	404	405	1852	1.000
406	42.9108771	67.2569888	Fixed Point at 60 miles from the foot of the slope, 76 (4)	405	406	1852	1.000
407	42.9024080	67.2765182	Fixed Point at 60 miles from the foot of the slope, 76 (4)	406	407	1852	1.000
408	42.8941738	67.2962317	Fixed Point at 60 miles from the foot of the slope, 76 (4)	407	408	1852	1.000
409	42.8861780	67.3161249	Fixed Point at 60 miles from the foot of the slope, 76 (4)	408	409	1852	1.000
410	42.8784222	67.3361911	Fixed Point at 60 miles from the foot of the slope, 76 (4)	409	410	1852	1.000
411	42.8709116	67.3564234	Fixed Point at 60 miles from the foot of the slope, 76 (4)	410	411	1852	1.000

## The French Continental Shelf

FP	Latitude South	Longitude East	Method, Article 76	from PF	to PF	Distance (m)	Distance (Miles)
412	42.8636446	67.3768241	Fixed Point at 60 miles from the foot of the slope, 76 (4)	411	412	1852	1.000
413	42.8566279	67.3973776	Fixed Point at 60 miles from the foot of the slope, 76 (4)	412	413	1852	1.000
414	42.8498582	67.4180792	Fixed Point at 60 miles from the foot of the slope, 76 (4)	413	414	1852	1.000
415	42.8433407	67.4389314	Fixed Point at 60 miles from the foot of the slope, 76 (4)	414	415	1852	1.000
416	42.8370753	67.4599228	Fixed Point at 60 miles from the foot of the slope, 76 (4)	415	416	1852	1.000
417	42.8310638	67.4810534	Fixed Point at 60 miles from the foot of the slope, 76 (4)	416	417	1852	1.000
418	42.8253063	67.5023053	Fixed Point at 60 miles from the foot of the slope, 76 (4)	417	418	1852	1.000
419	42.8198095	67.5236874	Fixed Point at 60 miles from the foot of the slope, 76 (4)	418	419	1852	1.000
420	42.8145735	67.5451796	Fixed Point at 60 miles from the foot of the slope, 76 (4)	419	420	1852	1.000
421	42.8095933	67.5667908	Fixed Point at 60 miles from the foot of the slope, 76 (4)	420	421	1852	1.000
422	42.8048756	67.5885076	Fixed Point at 60 miles from the foot of the slope, 76 (4)	421	422	1852	1.000
423	42.8004222	67.6103209	Fixed Point at 60 miles from the foot of the slope, 76 (4)	422	423	1852	1.000
424	42.7962314	67.6322353	Fixed Point at 60 miles from the foot of the slope, 76 (4)	423	424	1852	1.000
425	42.7923099	67.6542351	Fixed Point at 60 miles from the foot of the slope, 76 (4)	424	425	1852	1.000
426	42.7886512	67.6763134	Fixed Point at 60 miles from the foot of the slope, 76 (4)	425	426	1852	1.000
427	42.7852618	67.6984749	Fixed Point at 60 miles from the foot of the slope, 76 (4)	426	427	1852	1.000
428	42.7821403	67.7207037	Fixed Point at 60 miles from the foot of the slope, 76 (4)	427	428	1852	1.000
429	42.7792867	67.7430066	Fixed Point at 60 miles from the foot of the slope, 76 (4)	428	429	1852	1.000
430	42.7767009	67.7653589	Fixed Point at 60 miles from the foot of the slope, 76 (4)	429	430	1852	1.000
431	42.7743896	67.7877719	Fixed Point at 60 miles from the foot of the slope, 76 (4)	430	431	1852	1.000
432	42.7723463	67.8102298	Fixed Point at 60 miles from the foot of the slope, 76 (4)	431	432	1852	1.000
433	42.7705760	67.8327303	Fixed Point at 60 miles from the foot of the slope, 76 (4)	432	433	1852	1.000
434	42.7690736	67.8552601	Fixed Point at 60 miles from the foot of the slope, 76 (4)	433	434	1852	1.000
435	42.7678492	67.8778280	Fixed Point at 60 miles from the foot of the slope, 76 (4)	434	435	1852	1.000
436	42.7668928	67.9004161	Fixed Point at 60 miles from the foot of the slope, 76 (4)	435	436	1852	1.000
437	42.7662144	67.9230200	Fixed Point at 60 miles from the foot of the slope, 76 (4)	436	437	1852	1.000

## The French Continental Shelf

FP	Latitude South	Longitude East	Method, Article 76	from PF	to PF	Distance (m)	Distance (Miles)
438	42.7658056	67.9456373	Fixed Point at 60 miles from the foot of the slope, 76 (4)	437	438	1852	1.000
439	42.7656733	67.9680638	Fixed Point at 60 miles from the foot of the slope, 76 (4)	438	439	1852	1.000
440	42.7658106	67.9906878	Fixed Point at 60 miles from the foot of the slope, 76 (4)	439	440	1852	1.000
441	42.7662193	68.0133052	Fixed Point at 60 miles from the foot of the slope, 76 (4)	440	441	1852	1.000
442	42.7669027	68.0359113	Fixed Point at 60 miles from the foot of the slope, 76 (4)	441	442	1852	1.000
443	42.7678574	68.0585039	Fixed Point at 60 miles from the foot of the slope, 76 (4)	442	443	1852	1.000
444	42.7690868	68.0810673	Fixed Point at 60 miles from the foot of the slope, 76 (4)	443	444	1852	1.000
445	42.7705892	68.1036038	Fixed Point at 60 miles from the foot of the slope, 76 (4)	444	445	1852	1.000
446	42.7723645	68.1261044	Fixed Point at 60 miles from the foot of the slope, 76 (4)	445	446	1852	1.000
447	42.7744078	68.1485623	Fixed Point at 60 miles from the foot of the slope, 76 (4)	446	447	1852	1.000
448	42.7767240	68.1709685	Fixed Point at 60 miles from the foot of the slope, 76 (4)	447	448	1852	1.000
449	42.7793098	68.1933276	Fixed Point at 60 miles from the foot of the slope, 76 (4)	448	449	1852	1.000
450	42.7821668	68.2156238	Fixed Point at 60 miles from the foot of the slope, 76 (4)	449	450	1852	1.000
451	42.7852883	68.2378526	Fixed Point at 60 miles from the foot of the slope, 76 (4)	450	451	1852	1.000
452	42.7886842	68.2600118	Fixed Point at 60 miles from the foot of the slope, 76 (4)	451	452	1852	1.000
453	42.7923413	68.2820923	Fixed Point at 60 miles from the foot of the slope, 76 (4)	452	453	1852	1.000
454	42.7962678	68.3040921	Fixed Point at 60 miles from the foot of the slope, 76 (4)	453	454	1852	1.000
455	42.8004635	68.3259997	Fixed Point at 60 miles from the foot of the slope, 76 (4)	454	455	1852	1.000
456	42.8049169	68.3478153	Fixed Point at 60 miles from the foot of the slope, 76 (4)	455	456	1852	1.000
457	42.8096379	68.3695299	Fixed Point at 60 miles from the foot of the slope, 76 (4)	456	457	1852	1.000
458	42.8146198	68.3911411	Fixed Point at 60 miles from the foot of the slope, 76 (4)	457	458	1852	1.000
459	42.8198591	68.4126333	Fixed Point at 60 miles from the foot of the slope, 76 (4)	458	459	1852	1.000
460	42.8253576	68.4340087	Fixed Point at 60 miles from the foot of the slope, 76 (4)	459	460	1852	1.000
461	42.8311134	68.4552673	Fixed Point at 60 miles from the foot of the slope, 76 (4)	460	461	1852	1.000
462	42.8371298	68.4763912	Fixed Point at 60 miles from the foot of the slope, 76 (4)	461	462	1852	1.000
463	42.8433952	68.4973848	Fixed Point at 60 miles from the foot of the slope, 76 (4)	462	463	1852	1.000



## The French Continental Shelf

FP	Latitude South	Longitude East	Method, Article 76	from PF	to PF	Distance (m)	Distance (Miles)
464	42.8499177	68.5182347	Fixed Point at 60 miles from the foot of the slope, 76 (4)	463	464	1852	1.000
465	42.8566857	68.5389364	Fixed Point at 60 miles from the foot of the slope, 76 (4)	464	465	1852	1.000
466	42.8637090	68.5594921	Fixed Point at 60 miles from the foot of the slope, 76 (4)	465	466	1852	1.000
467	42.8709744	68.5798839	Fixed Point at 60 miles from the foot of the slope, 76 (4)	466	467	1852	1.000
468	42.8784899	68.6001184	Fixed Point at 60 miles from the foot of the slope, 76 (4)	467	468	1852	1.000
469	42.8862457	68.6201845	Fixed Point at 60 miles from the foot of the slope, 76 (4)	468	469	1852	1.000
470	42.8942465	68.6400710	Fixed Point at 60 miles from the foot of the slope, 76 (4)	469	470	1852	1.000
471	42.9024806	68.6597845	Fixed Point at 60 miles from the foot of the slope, 76 (4)	470	471	1852	1.000
472	42.9109547	68.6793139	Fixed Point at 60 miles from the foot of the slope, 76 (4)	471	472	1852	1.000
473	42.9196637	68.6986501	Fixed Point at 60 miles from the foot of the slope, 76 (4)	472	473	1852	1.000
474	42.9286041	68.7177955	Fixed Point at 60 miles from the foot of the slope, 76 (4)	473	474	1852	1.000
475	42.9377791	68.7367387	Fixed Point at 60 miles from the foot of the slope, 76 (4)	474	475	1852	1.000
476	42.9471739	68.7554820	Fixed Point at 60 miles from the foot of the slope, 76 (4)	475	476	1852	1.000
477	42.9567998	68.7740098	Fixed Point at 60 miles from the foot of the slope, 76 (4)	476	477	1852	1.000
478	42.9666452	68.7923220	Fixed Point at 60 miles from the foot of the slope, 76 (4)	477	478	1852	1.000
479	42.9767133	68.8104163	Fixed Point at 60 miles from the foot of the slope, 76 (4)	478	479	1852	1.000
480	42.9869957	68.8282905	Fixed Point at 60 miles from the foot of the slope, 76 (4)	479	480	1852	1.000
481	42.9974939	68.8459289	Fixed Point at 60 miles from the foot of the slope, 76 (4)	480	481	1852	1.000
482	43.0082046	68.8633315	Fixed Point at 60 miles from the foot of the slope, 76 (4)	481	482	1852	1.000
483	43.0191211	68.8804938	Fixed Point at 60 miles from the foot of the slope, 76 (4)	482	483	1852	1.000
484	43.0302448	68.8974159	Fixed Point at 60 miles from the foot of the slope, 76 (4)	483	484	1852	1.000
485	43.0415741	68.9140908	Fixed Point at 60 miles from the foot of the slope, 76 (4)	484	485	1852	1.000
486	43.0531022	68.9305120	Fixed Point at 60 miles from the foot of the slope, 76 (4)	485	486	1852	1.000
487	43.0648257	68.9466660	Fixed Point at 60 miles from the foot of the slope, 76 (4)	486	487	1852	1.000
488	43.0767429	68.9625684	Fixed Point at 60 miles from the foot of the slope, 76 (4)	487	488	1852	1.000
489	43.0888470	68.9781991	Fixed Point at 60 miles from the foot of the slope, 76 (4)	488	489	1852	1.000

## The French Continental Shelf

FP	Latitude South	Longitude East	Method, Article 76	from PF	to PF	Distance (m)	Distance (Miles)
490	43.1011446	68.9935580	Fixed Point at 60 miles from the foot of the slope, 76 (4)	489	490	1852	1.000
491	43.1136239	69.0086453	Fixed Point at 60 miles from the foot of the slope, 76 (4)	490	491	1852	1.000
492	43.1262816	69.0234472	Fixed Point at 60 miles from the foot of the slope, 76 (4)	491	492	1852	1.000
493	43.1391193	69.0379708	Fixed Point at 60 miles from the foot of the slope, 76 (4)	492	493	1852	1.000
494	43.1521285	69.0522001	Fixed Point at 60 miles from the foot of the slope, 76 (4)	493	494	1852	1.000
495	43.1653092	69.0661442	Fixed Point at 60 miles from the foot of the slope, 76 (4)	494	495	1852	1.000
496	43.1786530	69.0797851	Fixed Point at 60 miles from the foot of the slope, 76 (4)	495	496	1852	1.000
497	43.1921647	69.0931296	Fixed Point at 60 miles from the foot of the slope, 76 (4)	496	497	1852	1.000
498	43.2058328	69.1061709	Fixed Point at 60 miles from the foot of the slope, 76 (4)	497	498	1852	1.000
499	43.2196555	69.1189090	Fixed Point at 60 miles from the foot of the slope, 76 (4)	498	499	1852	1.000
500	43.2336327	69.1313282	Fixed Point at 60 miles from the foot of the slope, 76 (4)	499	500	1852	1.000
501	43.2477577	69.1434352	Fixed Point at 60 miles from the foot of the slope, 76 (4)	500	501	1852	1.000
502	43.2620271	69.1552301	Fixed Point at 60 miles from the foot of the slope, 76 (4)	501	502	1852	1.000
503	43.2764327	69.1666971	Fixed Point at 60 miles from the foot of the slope, 76 (4)	502	503	1852	1.000
504	43.2909791	69.1778407	Fixed Point at 60 miles from the foot of the slope, 76 (4)	503	504	1852	1.000
505	43.3056582	69.1886587	Fixed Point at 60 miles from the foot of the slope, 76 (4)	504	505	1852	1.000
506	43.3204632	69.1991442	Fixed Point at 60 miles from the foot of the slope, 76 (4)	505	506	1852	1.000
507	43.3353974	69.2092930	Fixed Point at 60 miles from the foot of the slope, 76 (4)	506	507	1852	1.000
508	43.3504475	69.2191048	Fixed Point at 60 miles from the foot of the slope, 76 (4)	507	508	1852	1.000
509	43.3656168	69.2285753	Fixed Point at 60 miles from the foot of the slope, 76 (4)	508	509	1852	1.000
510	43.3808953	69.2377067	Fixed Point at 60 miles from the foot of the slope, 76 (4)	509	510	1852	1.000
511	43.3962861	69.2464922	Fixed Point at 60 miles from the foot of the slope, 76 (4)	510	511	1852	1.000
512	43.4117762	69.2549251	Fixed Point at 60 miles from the foot of the slope, 76 (4)	511	512	1852	1.000
513	43.4273671	69.2630055	Fixed Point at 60 miles from the foot of the slope, 76 (4)	512	513	1852	1.000
514	43.4430569	69.2707400	Fixed Point at 60 miles from the foot of the slope, 76 (4)	513	514	1852	1.000
515	43.4588376	69.2781106	Fixed Point at 60 miles from the foot of the slope, 76 (4)	514	515	1852	1.000

## The French Continental Shelf

FP	Latitude South	Longitude East	Method, Article 76	from PF	to PF	Distance (m)	Distance (Miles)
516	43.4746992	69.2851287	Fixed Point at 60 miles from the foot of the slope, 76 (4)	515	516	1852	1.000
517	43.4906514	69.2917897	Fixed Point at 60 miles from the foot of the slope, 76 (4)	516	517	1852	1.000
518	43.5066746	69.2980779	Fixed Point at 60 miles from the foot of the slope, 76 (4)	517	518	1852	1.000
519	43.5227752	69.3040091	Fixed Point at 60 miles from the foot of the slope, 76 (4)	518	519	1852	1.000
520	43.5389433	69.3095696	Fixed Point at 60 miles from the foot of the slope, 76 (4)	519	520	1852	1.000
521	43.5551806	69.3147642	Fixed Point at 60 miles from the foot of the slope, 76 (4)	520	521	1852	1.000
522	43.5677492	69.3184877	Fixed Point at 60 miles from the foot of the slope, 76 (4)	521	522	1428	0.771
523	44.1101143	70.4646302	Fixed Point at 60 miles from the foot of the slope, 76 (4)	522	523	110125	59.463
524	44.1084686	70.4756368	Fixed Point at 60 miles from the foot of the slope, 76 (4)	523	524	900	0.486
525	44.1053472	70.4983597	Fixed Point at 60 miles from the foot of the slope, 76 (4)	524	525	1852	1.000
526	44.1024990	70.5211499	Fixed Point at 60 miles from the foot of the slope, 76 (4)	525	526	1852	1.000
527	44.0999162	70.5439963	Fixed Point at 60 miles from the foot of the slope, 76 (4)	526	527	1852	1.000
528	44.0976051	70.5669034	Fixed Point at 60 miles from the foot of the slope, 76 (4)	527	528	1852	1.000
529	44.0955626	70.5898553	Fixed Point at 60 miles from the foot of the slope, 76 (4)	528	529	1852	1.000
530	44.0937936	70.6128500	Fixed Point at 60 miles from the foot of the slope, 76 (4)	529	530	1852	1.000
531	44.0922980	70.6358828	Fixed Point at 60 miles from the foot of the slope, 76 (4)	530	531	1852	1.000
532	44.0910744	70.6589448	Fixed Point at 60 miles from the foot of the slope, 76 (4)	531	532	1852	1.000
533	44.0901210	70.6820315	Fixed Point at 60 miles from the foot of the slope, 76 (4)	532	533	1852	1.000
534	44.0894396	70.7051361	Fixed Point at 60 miles from the foot of the slope, 76 (4)	533	534	1852	1.000
535	44.0890300	70.7282498	Fixed Point at 60 miles from the foot of the slope, 76 (4)	534	535	1852	1.000
536	44.0888957	70.7511703	Fixed Point at 60 miles from the foot of the slope, 76 (4)	535	536	1852	1.000
537	44.0890349	70.7742929	Fixed Point at 60 miles from the foot of the slope, 76 (4)	536	537	1852	1.000
538	44.0894444	70.7974111	Fixed Point at 60 miles from the foot of the slope, 76 (4)	537	538	1852	1.000
539	44.0901259	70.8205112	Fixed Point at 60 miles from the foot of the slope, 76 (4)	538	539	1852	1.000
540	44.0910825	70.8435980	Fixed Point at 60 miles from the foot of the slope, 76 (4)	539	540	1852	1.000
541	44.0923078	70.8666600	Fixed Point at 60 miles from the foot of the slope, 76 (4)	540	541	1852	1.000

## The French Continental Shelf

FP	Latitude South	Longitude East	Method, Article 76	from PF	to PF	Distance (m)	Distance (Miles)
542	44.0938082	70.8896928	Fixed Point at 60 miles from the foot of the slope, 76 (4)	541	542	1852	1.000
543	44.0955804	70.9126874	Fixed Point at 60 miles from the foot of the slope, 76 (4)	542	543	1852	1.000
544	44.0976229	70.9356393	Fixed Point at 60 miles from the foot of the slope, 76 (4)	543	544	1852	1.000
545	44.0999388	70.9585464	Fixed Point at 60 miles from the foot of the slope, 76 (4)	544	545	1852	1.000
546	44.1025201	70.9813928	Fixed Point at 60 miles from the foot of the slope, 76 (4)	545	546	1852	1.000
547	44.1053747	71.0041830	Fixed Point at 60 miles from the foot of the slope, 76 (4)	546	547	1852	1.000
548	44.1084945	71.0268992	Fixed Point at 60 miles from the foot of the slope, 76 (4)	547	548	1852	1.000
549	44.1118860	71.0495480	Fixed Point at 60 miles from the foot of the slope, 76 (4)	548	549	1852	1.000
550	44.1155411	71.0721159	Fixed Point at 60 miles from the foot of the slope, 76 (4)	549	550	1852	1.000
551	44.1194660	71.0946052	Fixed Point at 60 miles from the foot of the slope, 76 (4)	550	551	1852	1.000
552	44.1236545	71.1170002	Fixed Point at 60 miles from the foot of the slope, 76 (4)	551	552	1852	1.000
553	44.1281046	71.1392964	Fixed Point at 60 miles from the foot of the slope, 76 (4)	552	553	1852	1.000
554	44.1328165	71.1614938	Fixed Point at 60 miles from the foot of the slope, 76 (4)	553	554	1852	1.000
555	44.1377948	71.1835811	Fixed Point at 60 miles from the foot of the slope, 76 (4)	554	555	1852	1.000
556	44.1430315	71.2055494	Fixed Point at 60 miles from the foot of the slope, 76 (4)	555	556	1852	1.000
557	44.1485248	71.2274009	Fixed Point at 60 miles from the foot of the slope, 76 (4)	556	557	1852	1.000
558	44.1542762	71.2491289	Fixed Point at 60 miles from the foot of the slope, 76 (4)	557	558	1852	1.000
559	44.1602858	71.2707222	Fixed Point at 60 miles from the foot of the slope, 76 (4)	558	559	1852	1.000
560	44.1665470	71.2921784	Fixed Point at 60 miles from the foot of the slope, 76 (4)	559	560	1852	1.000
561	44.1730612	71.3134910	Fixed Point at 60 miles from the foot of the slope, 76 (4)	560	561	1852	1.000
562	44.1798236	71.3346575	Fixed Point at 60 miles from the foot of the slope, 76 (4)	561	562	1852	1.000
563	44.1868390	71.3556624	Fixed Point at 60 miles from the foot of the slope, 76 (4)	562	563	1852	1.000
564	44.1940991	71.3765123	Fixed Point at 60 miles from the foot of the slope, 76 (4)	563	564	1852	1.000
565	44.2016055	71.3971982	Fixed Point at 60 miles from the foot of the slope, 76 (4)	564	565	1852	1.000
566	44.2093564	71.4177090	Fixed Point at 60 miles from the foot of the slope, 76 (4)	565	566	1852	1.000
567	44.2173454	71.4380469	Fixed Point at 60 miles from the foot of the slope, 76 (4)	566	567	1852	1.000

## The French Continental Shelf

FP	Latitude South	Longitude East	Method, Article 76	from PF	to PF	Distance (m)	Distance (Miles)
568	44.2255771	71.4581983	Fixed Point at 60 miles from the foot of the slope, 76 (4)	567	568	1852	1.000
569	44.2340450	71.4781589	Fixed Point at 60 miles from the foot of the slope, 76 (4)	568	569	1852	1.000
570	44.2427458	71.4979353	Fixed Point at 60 miles from the foot of the slope, 76 (4)	569	570	1852	1.000
571	44.2516761	71.5175073	Fixed Point at 60 miles from the foot of the slope, 76 (4)	570	571	1852	1.000
572	44.2608407	71.5368750	Fixed Point at 60 miles from the foot of the slope, 76 (4)	571	572	1852	1.000
573	44.2702298	71.5560406	Fixed Point at 60 miles from the foot of the slope, 76 (4)	572	573	1852	1.000
574	44.2798481	71.5749816	Fixed Point at 60 miles from the foot of the slope, 76 (4)	573	574	1852	1.000
575	44.2896825	71.5937137	Fixed Point at 60 miles from the foot of the slope, 76 (4)	574	575	1852	1.000
576	44.2997427	71.6122100	Fixed Point at 60 miles from the foot of the slope, 76 (4)	575	576	1852	1.000
577	44.3100173	71.6304840	Fixed Point at 60 miles from the foot of the slope, 76 (4)	576	577	1852	1.000
578	44.3205077	71.6485244	Fixed Point at 60 miles from the foot of the slope, 76 (4)	577	578	1852	1.000
579	44.3312090	71.6663245	Fixed Point at 60 miles from the foot of the slope, 76 (4)	578	579	1852	1.000
580	44.3421163	71.6838753	Fixed Point at 60 miles from the foot of the slope, 76 (4)	579	580	1852	1.000
581	44.3532293	71.7011791	Fixed Point at 60 miles from the foot of the slope, 76 (4)	580	581	1852	1.000
582	44.3645497	71.7182314	Fixed Point at 60 miles from the foot of the slope, 76 (4)	581	582	1852	1.000
583	44.3760676	71.7350232	Fixed Point at 60 miles from the foot of the slope, 76 (4)	582	583	1852	1.000
584	44.3877813	71.7515544	Fixed Point at 60 miles from the foot of the slope, 76 (4)	583	584	1852	1.000
585	44.3996891	71.7678162	Fixed Point at 60 miles from the foot of the slope, 76 (4)	584	585	1852	1.000
586	44.4117892	71.7838039	Fixed Point at 60 miles from the foot of the slope, 76 (4)	585	586	1852	1.000
587	44.4240751	71.7995155	Fixed Point at 60 miles from the foot of the slope, 76 (4)	586	587	1852	1.000
588	44.4365419	71.8149485	Fixed Point at 60 miles from the foot of the slope, 76 (4)	587	588	1852	1.000
589	44.4491910	71.8300896	Fixed Point at 60 miles from the foot of the slope, 76 (4)	588	589	1852	1.000
590	44.4620190	71.8449478	Fixed Point at 60 miles from the foot of the slope, 76 (4)	589	590	1852	1.000
591	44.4750211	71.8595094	Fixed Point at 60 miles from the foot of the slope, 76 (4)	590	591	1852	1.000
592	44.4881923	71.8737747	Fixed Point at 60 miles from the foot of the slope, 76 (4)	591	592	1852	1.000
593	44.5015293	71.8877300	Fixed Point at 60 miles from the foot of the slope, 76 (4)	592	593	1852	1.000

## The French Continental Shelf

FP	Latitude South	Longitude East	Method, Article 76	from PF	to PF	Distance (m)	Distance (Miles)
594	44.5150270	71.9013911	Fixed Point at 60 miles from the foot of the slope, 76 (4)	593	594	1852	1.000
595	44.5286888	71.9147356	Fixed Point at 60 miles from the foot of the slope, 76 (4)	594	595	1852	1.000
596	44.5425015	71.9277634	Fixed Point at 60 miles from the foot of the slope, 76 (4)	595	596	1852	1.000
597	44.5564714	71.9404791	Fixed Point at 60 miles from the foot of the slope, 76 (4)	596	597	1852	1.000
598	44.5705825	71.9528714	Fixed Point at 60 miles from the foot of the slope, 76 (4)	597	598	1852	1.000
599	44.5841717	71.9643698	Fixed Point at 60 miles from the foot of the slope, 76 (4)	598	599	1765	0.953
600	44.9656372	73.2493649	Fixed Point at 60 miles from the foot of the slope, 76 (4)	599	600	110192	59.499
601	44.9620834	73.2700666	Fixed Point at 60 miles from the foot of the slope, 76 (4)	600	601	1680	0.907
602	44.9584304	73.2929669	Fixed Point at 60 miles from the foot of the slope, 76 (4)	601	602	1852	1.000
603	44.9550483	73.3159503	Fixed Point at 60 miles from the foot of the slope, 76 (4)	602	603	1852	1.000
604	44.9519292	73.3389988	Fixed Point at 60 miles from the foot of the slope, 76 (4)	603	604	1852	1.000
605	44.9490810	73.3621237	Fixed Point at 60 miles from the foot of the slope, 76 (4)	604	605	1852	1.000
606	44.9465021	73.3853047	Fixed Point at 60 miles from the foot of the slope, 76 (4)	605	606	1852	1.000
607	44.9441895	73.4085464	Fixed Point at 60 miles from the foot of the slope, 76 (4)	606	607	1852	1.000
608	44.9421496	73.4318307	Fixed Point at 60 miles from the foot of the slope, 76 (4)	607	608	1852	1.000
609	44.9403855	73.4551577	Fixed Point at 60 miles from the foot of the slope, 76 (4)	608	609	1852	1.000
610	44.9388894	73.4785296	Fixed Point at 60 miles from the foot of the slope, 76 (4)	609	610	1852	1.000
611	44.9376611	73.5019262	Fixed Point at 60 miles from the foot of the slope, 76 (4)	610	611	1852	1.000
612	44.9367088	73.5253543	Fixed Point at 60 miles from the foot of the slope, 76 (4)	611	612	1852	1.000
613	44.9360325	73.5487936	Fixed Point at 60 miles from the foot of the slope, 76 (4)	612	613	1852	1.000
614	44.9356241	73.5722441	Fixed Point at 60 miles from the foot of the slope, 76 (4)	613	614	1852	1.000
615	44.9354886	73.5954992	Fixed Point at 60 miles from the foot of the slope, 76 (4)	614	615	1852	1.000
616	44.9356241	73.6189565	Fixed Point at 60 miles from the foot of the slope, 76 (4)	615	616	1852	1.000
617	44.9360373	73.6424138	Fixed Point at 60 miles from the foot of the slope, 76 (4)	616	617	1852	1.000
618	44.9367168	73.6658530	Fixed Point at 60 miles from the foot of the slope, 76 (4)	617	618	1852	1.000
619	44.9376739	73.6892744	Fixed Point at 60 miles from the foot of the slope, 76 (4)	618	619	1852	1.000

## The French Continental Shelf

FP	Latitude South	Longitude East	Method, Article 76	from PF	to PF	Distance (m)	Distance (Miles)
620	44.9388973	73.7126755	Fixed Point at 60 miles from the foot of the slope, 76 (4)	619	620	1852	1.000
621	44.9403983	73.7360407	Fixed Point at 60 miles from the foot of the slope, 76 (4)	620	621	1852	1.000
622	44.9421671	73.7593699	Fixed Point at 60 miles from the foot of the slope, 76 (4)	621	622	1852	1.000
623	44.9442119	73.7826610	Fixed Point at 60 miles from the foot of the slope, 76 (4)	622	623	1852	1.000
624	44.9465245	73.8058959	Fixed Point at 60 miles from the foot of the slope, 76 (4)	623	624	1852	1.000
625	44.9491033	73.8290814	Fixed Point at 60 miles from the foot of the slope, 76 (4)	624	625	1852	1.000
626	44.9519547	73.8521996	Fixed Point at 60 miles from the foot of the slope, 76 (4)	625	626	1852	1.000
627	44.9550739	73.8752571	Fixed Point at 60 miles from the foot of the slope, 76 (4)	626	627	1852	1.000
628	44.9584607	73.8982337	Fixed Point at 60 miles from the foot of the slope, 76 (4)	627	628	1852	1.000
629	44.9621185	73.9211340	Fixed Point at 60 miles from the foot of the slope, 76 (4)	628	629	1852	1.000
630	44.9660358	73.9439445	Fixed Point at 60 miles from the foot of the slope, 76 (4)	629	630	1852	1.000
631	44.9702239	73.9666674	Fixed Point at 60 miles from the foot of the slope, 76 (4)	630	631	1852	1.000
632	44.9746700	73.9892915	Fixed Point at 60 miles from the foot of the slope, 76 (4)	631	632	1852	1.000
633	44.9793803	74.0118145	Fixed Point at 60 miles from the foot of the slope, 76 (4)	632	633	1852	1.000
634	44.9843563	74.0342229	Fixed Point at 60 miles from the foot of the slope, 76 (4)	633	634	1852	1.000
635	44.9895869	74.0565191	Fixed Point at 60 miles from the foot of the slope, 76 (4)	634	635	1852	1.000
636	44.9950800	74.0786873	Fixed Point at 60 miles from the foot of the slope, 76 (4)	635	636	1852	1.000
637	45.0008259	74.1007365	Fixed Point at 60 miles from the foot of the slope, 76 (4)	636	637	1852	1.000
638	45.0068309	74.1226419	Fixed Point at 60 miles from the foot of the slope, 76 (4)	637	638	1852	1.000
639	45.0130885	74.1444148	Fixed Point at 60 miles from the foot of the slope, 76 (4)	638	639	1852	1.000
640	45.0195971	74.1660440	Fixed Point at 60 miles from the foot of the slope, 76 (4)	639	640	1852	1.000
641	45.0263566	74.1875182	Fixed Point at 60 miles from the foot of the slope, 76 (4)	640	641	1852	1.000
642	45.0333669	74.2088375	Fixed Point at 60 miles from the foot of the slope, 76 (4)	641	642	1852	1.000
643	45.0406247	74.2299973	Fixed Point at 60 miles from the foot of the slope, 76 (4)	642	643	1852	1.000
644	45.0481268	74.2509842	Fixed Point at 60 miles from the foot of the slope, 76 (4)	643	644	1852	1.000
645	45.0558698	74.2717981	Fixed Point at 60 miles from the foot of the slope, 76 (4)	644	645	1852	1.000

## The French Continental Shelf

FP	Latitude South	Longitude East	Method, Article 76	from PF	to PF	Distance (m)	Distance (Miles)
646	45.0638569	74.2924324	Fixed Point at 60 miles from the foot of the slope, 76 (4)	645	646	1852	1.000
647	45.0720832	74.3128893	Fixed Point at 60 miles from the foot of the slope, 76 (4)	646	647	1852	1.000
648	45.0805437	74.3331463	Fixed Point at 60 miles from the foot of the slope, 76 (4)	647	648	1852	1.000
649	45.0892401	74.3532125	Fixed Point at 60 miles from the foot of the slope, 76 (4)	648	649	1852	1.000
650	45.0981673	74.3730742	Fixed Point at 60 miles from the foot of the slope, 76 (4)	649	650	1852	1.000
651	45.1073253	74.3927338	Fixed Point at 60 miles from the foot of the slope, 76 (4)	650	651	1852	1.000
652	45.1167124	74.4121756	Fixed Point at 60 miles from the foot of the slope, 76 (4)	651	652	1852	1.000
653	45.1263221	74.4314063	Fixed Point at 60 miles from the foot of the slope, 76 (4)	652	653	1852	1.000
654	45.1361527	74.4504102	Fixed Point at 60 miles from the foot of the slope, 76 (4)	653	654	1852	1.000
655	45.1462057	74.4691917	Fixed Point at 60 miles from the foot of the slope, 76 (4)	654	655	1852	1.000
656	45.1564746	74.4877374	Fixed Point at 60 miles from the foot of the slope, 76 (4)	655	656	1852	1.000
657	45.1669593	74.5060428	Fixed Point at 60 miles from the foot of the slope, 76 (4)	656	657	1852	1.000
658	45.1776533	74.5241080	Fixed Point at 60 miles from the foot of the slope, 76 (4)	657	658	1852	1.000
659	45.1885580	74.5419260	Fixed Point at 60 miles from the foot of the slope, 76 (4)	658	659	1852	1.000
660	45.1996671	74.5594904	Fixed Point at 60 miles from the foot of the slope, 76 (4)	659	660	1852	1.000
661	45.2109772	74.5768009	Fixed Point at 60 miles from the foot of the slope, 76 (4)	660	661	1852	1.000
662	45.2224930	74.5938464	Fixed Point at 60 miles from the foot of the slope, 76 (4)	661	662	1852	1.000
663	45.2342016	74.6106247	Fixed Point at 60 miles from the foot of the slope, 76 (4)	662	663	1852	1.000
664	45.2460997	74.6271335	Fixed Point at 60 miles from the foot of the slope, 76 (4)	663	664	1852	1.000
665	45.2581919	74.6433616	Fixed Point at 60 miles from the foot of the slope, 76 (4)	664	665	1852	1.000
666	45.2704719	74.6593134	Fixed Point at 60 miles from the foot of the slope, 76 (4)	665	666	1852	1.000
667	45.2829347	74.6749800	Fixed Point at 60 miles from the foot of the slope, 76 (4)	666	667	1852	1.000
668	45.2955802	74.6903524	Fixed Point at 60 miles from the foot of the slope, 76 (4)	667	668	1852	1.000
669	45.3083988	74.7054396	Fixed Point at 60 miles from the foot of the slope, 76 (4)	668	669	1852	1.000
670	45.3213935	74.7202237	Fixed Point at 60 miles from the foot of the slope, 76 (4)	669	670	1852	1.000
671	45.3345578	74.7347045	Fixed Point at 60 miles from the foot of the slope, 76 (4)	670	671	1852	1.000



## The French Continental Shelf

FP	Latitude South	Longitude East	Method, Article 76	from PF	to PF	Distance (m)	Distance (Miles)
672	45.3478901	74.7488754	Fixed Point at 60 miles from the foot of the slope, 76 (4)	671	672	1852	1.000
673	45.3613854	74.7627387	Fixed Point at 60 miles from the foot of the slope, 76 (4)	672	673	1852	1.000
674	45.3750374	74.7762943	Fixed Point at 60 miles from the foot of the slope, 76 (4)	673	674	1852	1.000
675	45.3888475	74.7895264	Fixed Point at 60 miles from the foot of the slope, 76 (4)	674	675	1852	1.000
676	45.4028061	74.8024330	Fixed Point at 60 miles from the foot of the slope, 76 (4)	675	676	1852	1.000
677	45.4169177	74.8150184	Fixed Point at 60 miles from the foot of the slope, 76 (4)	676	677	1852	1.000
678	45.4311698	74.8272759	Fixed Point at 60 miles from the foot of the slope, 76 (4)	677	678	1852	1.000
679	45.4455620	74.8391988	Fixed Point at 60 miles from the foot of the slope, 76 (4)	678	679	1852	1.000
680	45.4600944	74.8507826	Fixed Point at 60 miles from the foot of the slope, 76 (4)	679	680	1852	1.000
681	45.4747557	74.8620317	Fixed Point at 60 miles from the foot of the slope, 76 (4)	680	681	1852	1.000
682	45.4895506	74.8729373	Fixed Point at 60 miles from the foot of the slope, 76 (4)	681	682	1852	1.000
683	45.5044664	74.8834947	Fixed Point at 60 miles from the foot of the slope, 76 (4)	682	683	1852	1.000
684	45.5061087	74.8846086	Fixed Point at 60 miles from the foot of the slope, 76 (4)	683	684	202	0.109
685	45.8627799	76.1834288	Fixed Point at 60 miles from the foot of the slope, 76 (4)	684	685	108668	58.676
686	45.8565693	76.1997310	Fixed Point at 60 miles from the foot of the slope, 76 (4)	685	686	1443	0.779
687	45.8488295	76.2208481	Fixed Point at 60 miles from the foot of the slope, 76 (4)	686	687	1852	1.000
688	45.8413334	76.2421382	Fixed Point at 60 miles from the foot of the slope, 76 (4)	687	688	1852	1.000
689	45.8340827	76.2635989	Fixed Point at 60 miles from the foot of the slope, 76 (4)	688	689	1852	1.000
690	45.8270823	76.2852236	Fixed Point at 60 miles from the foot of the slope, 76 (4)	689	690	1852	1.000
691	45.8203276	76.3070123	Fixed Point at 60 miles from the foot of the slope, 76 (4)	690	691	1852	1.000
692	45.8138217	76.3289446	Fixed Point at 60 miles from the foot of the slope, 76 (4)	691	692	1852	1.000
693	45.8075695	76.3510297	Fixed Point at 60 miles from the foot of the slope, 76 (4)	692	693	1852	1.000
694	45.8015726	76.3732585	Fixed Point at 60 miles from the foot of the slope, 76 (4)	693	694	1852	1.000
695	45.7958296	76.3956176	Fixed Point at 60 miles from the foot of the slope, 76 (4)	694	695	1852	1.000
696	45.7903452	76.4181114	Fixed Point at 60 miles from the foot of the slope, 76 (4)	695	696	1852	1.000
697	45.7851195	76.4407220	Fixed Point at 60 miles from the foot of the slope, 76 (4)	696	697	1852	1.000

## The French Continental Shelf

FP	Latitude South	Longitude East	Method, Article 76	from PF	to PF	Distance (m)	Distance (Miles)
698	45.7801479	76.4634516	Fixed Point at 60 miles from the foot of the slope, 76 (4)	697	698	1852	1.000
699	45.7754446	76.4862913	Fixed Point at 60 miles from the foot of the slope, 76 (4)	698	699	1852	1.000
700	45.7710002	76.5092433	Fixed Point at 60 miles from the foot of the slope, 76 (4)	699	700	1852	1.000
701	45.7668195	76.5322873	Fixed Point at 60 miles from the foot of the slope, 76 (4)	700	701	1852	1.000
702	45.7629072	76.5554301	Fixed Point at 60 miles from the foot of the slope, 76 (4)	701	702	1852	1.000
703	45.7592572	76.5786538	Fixed Point at 60 miles from the foot of the slope, 76 (4)	702	703	1852	1.000
704	45.7558711	76.6019629	Fixed Point at 60 miles from the foot of the slope, 76 (4)	703	704	1852	1.000
705	45.7527567	76.6253393	Fixed Point at 60 miles from the foot of the slope, 76 (4)	704	705	1852	1.000
706	45.7499111	76.6487920	Fixed Point at 60 miles from the foot of the slope, 76 (4)	705	706	1852	1.000
707	45.7473341	76.6723054	Fixed Point at 60 miles from the foot of the slope, 76 (4)	706	707	1852	1.000
708	45.7450244	76.6958750	Fixed Point at 60 miles from the foot of the slope, 76 (4)	707	708	1852	1.000
709	45.7429865	76.7194939	Fixed Point at 60 miles from the foot of the slope, 76 (4)	708	709	1852	1.000
710	45.7412222	76.7431556	Fixed Point at 60 miles from the foot of the slope, 76 (4)	709	710	1852	1.000
711	45.7397252	76.7668531	Fixed Point at 60 miles from the foot of the slope, 76 (4)	710	711	1852	1.000
712	45.7385002	76.7905844	Fixed Point at 60 miles from the foot of the slope, 76 (4)	711	712	1852	1.000
713	45.7375488	76.8143381	Fixed Point at 60 miles from the foot of the slope, 76 (4)	712	713	1852	1.000
714	45.7368694	76.8381165	Fixed Point at 60 miles from the foot of the slope, 76 (4)	713	714	1852	1.000
715	45.7364637	76.8619016	Fixed Point at 60 miles from the foot of the slope, 76 (4)	714	715	1852	1.000
716	45.7363285	76.8854846	Fixed Point at 60 miles from the foot of the slope, 76 (4)	715	716	1852	1.000
717	45.7364668	76.9092743	Fixed Point at 60 miles from the foot of the slope, 76 (4)	716	717	1852	1.000
718	45.7368741	76.9330594	Fixed Point at 60 miles from the foot of the slope, 76 (4)	717	718	1852	1.000
719	45.7375582	76.9568401	Fixed Point at 60 miles from the foot of the slope, 76 (4)	718	719	1852	1.000
720	45.7385096	76.9805938	Fixed Point at 60 miles from the foot of the slope, 76 (4)	719	720	1852	1.000
721	45.7397378	77.0043228	Fixed Point at 60 miles from the foot of the slope, 76 (4)	720	721	1852	1.000
722	45.7412348	77.0280226	Fixed Point at 60 miles from the foot of the slope, 76 (4)	721	722	1852	1.000
723	45.7430038	77.0516842	Fixed Point at 60 miles from the foot of the slope, 76 (4)	722	723	1852	1.000

## The French Continental Shelf

FP	Latitude South	Longitude East	Method, Article 76	from PF	to PF	Distance (m)	Distance (Miles)
724	45.7450448	77.0753032	Fixed Point at 60 miles from the foot of the slope, 76 (4)	723	724	1852	1.000
725	45.7473546	77.0988727	Fixed Point at 60 miles from the foot of the slope, 76 (4)	724	725	1852	1.000
726	45.7499331	77.1223861	Fixed Point at 60 miles from the foot of the slope, 76 (4)	725	726	1852	1.000
727	45.7527835	77.1458321	Fixed Point at 60 miles from the foot of the slope, 76 (4)	726	727	1852	1.000
728	45.7559010	77.1692153	Fixed Point at 60 miles from the foot of the slope, 76 (4)	727	728	1852	1.000
729	45.7592871	77.1925176	Fixed Point at 60 miles from the foot of the slope, 76 (4)	728	729	1852	1.000
730	45.7629371	77.2157480	Fixed Point at 60 miles from the foot of the slope, 76 (4)	729	730	1852	1.000
731	45.7668587	77.2388841	Fixed Point at 60 miles from the foot of the slope, 76 (4)	730	731	1852	1.000
732	45.7710395	77.2619282	Fixed Point at 60 miles from the foot of the slope, 76 (4)	731	732	1852	1.000
733	45.7754839	77.2848734	Fixed Point at 60 miles from the foot of the slope, 76 (4)	732	733	1852	1.000
734	45.7903531	77.3583354	Fixed Point at 60 miles from the foot of the slope, 76 (4)	733	734	5947	3.211
735	45.7950598	77.3811818	Fixed Point at 60 miles from the foot of the slope, 76 (4)	734	735	1852	1.000
736	45.8273163	77.5292196	Fixed Point at 60 miles from the foot of the slope, 76 (4)	735	736	12053	6.508
737	45.8322821	77.5519672	Fixed Point at 60 miles from the foot of the slope, 76 (4)	736	737	1852	1.000
738	45.8375127	77.5746025	Fixed Point at 60 miles from the foot of the slope, 76 (4)	737	738	1852	1.000
739	45.8430003	77.5971098	Fixed Point at 60 miles from the foot of the slope, 76 (4)	738	739	1852	1.000
740	45.8487431	77.6194868	Fixed Point at 60 miles from the foot of the slope, 76 (4)	739	740	1852	1.000
741	45.8547443	77.6417336	Fixed Point at 60 miles from the foot of the slope, 76 (4)	740	741	1852	1.000
742	45.8609990	77.6638322	Fixed Point at 60 miles from the foot of the slope, 76 (4)	741	742	1852	1.000
743	45.8675025	77.6857892	Fixed Point at 60 miles from the foot of the slope, 76 (4)	742	743	1852	1.000
744	45.8742609	77.7075914	Fixed Point at 60 miles from the foot of the slope, 76 (4)	743	744	1852	1.000
745	45.8812647	77.7292318	Fixed Point at 60 miles from the foot of the slope, 76 (4)	744	745	1852	1.000
746	45.8885170	77.7507127	Fixed Point at 60 miles from the foot of the slope, 76 (4)	745	746	1852	1.000
747	45.8960145	77.7720208	Fixed Point at 60 miles from the foot of the slope, 76 (4)	746	747	1852	1.000
748	45.9037572	77.7931491	Fixed Point at 60 miles from the foot of the slope, 76 (4)	747	748	1852	1.000
749	45.9117371	77.8141068	Fixed Point at 60 miles from the foot of the slope, 76 (4)	748	749	1852	1.000

## The French Continental Shelf

FP	Latitude South	Longitude East	Method, Article 76	from PF	to PF	Distance (m)	Distance (Miles)
750	45.9199556	77.8348647	Fixed Point at 60 miles from the foot of the slope, 76 (4)	749	750	1852	1.000
751	45.9284142	77.8554361	Fixed Point at 60 miles from the foot of the slope, 76 (4)	750	751	1852	1.000
752	45.9371051	77.8758121	Fixed Point at 60 miles from the foot of the slope, 76 (4)	751	752	1852	1.000
753	45.9460264	77.8959770	Fixed Point at 60 miles from the foot of the slope, 76 (4)	752	753	1852	1.000
754	45.9551796	77.9159376	Fixed Point at 60 miles from the foot of the slope, 76 (4)	753	754	1852	1.000
755	45.9645600	77.9356826	Fixed Point at 60 miles from the foot of the slope, 76 (4)	754	755	1852	1.000
756	45.9741628	77.9552052	Fixed Point at 60 miles from the foot of the slope, 76 (4)	755	756	1852	1.000
757	45.9839924	77.9744988	Fixed Point at 60 miles from the foot of the slope, 76 (4)	756	757	1852	1.000
758	45.9940347	77.9935700	Fixed Point at 60 miles from the foot of the slope, 76 (4)	757	758	1852	1.000
759	46.0042990	78.0124010	Fixed Point at 60 miles from the foot of the slope, 76 (4)	758	759	1852	1.000
760	46.0147772	78.0309916	Fixed Point at 60 miles from the foot of the slope, 76 (4)	759	760	1852	1.000
761	46.0254679	78.0493397	Fixed Point at 60 miles from the foot of the slope, 76 (4)	760	761	1852	1.000
762	46.0363628	78.0674295	Fixed Point at 60 miles from the foot of the slope, 76 (4)	761	762	1852	1.000
763	46.0474683	78.0852700	Fixed Point at 60 miles from the foot of the slope, 76 (4)	762	763	1852	1.000
764	46.0587717	78.1028478	Fixed Point at 60 miles from the foot of the slope, 76 (4)	763	764	1852	1.000
765	46.0702807	78.1201584	Fixed Point at 60 miles from the foot of the slope, 76 (4)	764	765	1852	1.000
766	46.0819794	78.1371972	Fixed Point at 60 miles from the foot of the slope, 76 (4)	765	766	1852	1.000
767	46.0938773	78.1539575	Fixed Point at 60 miles from the foot of the slope, 76 (4)	766	767	1852	1.000
768	46.1059631	78.1704461	Fixed Point at 60 miles from the foot of the slope, 76 (4)	767	768	1852	1.000
769	46.1182352	78.1866449	Fixed Point at 60 miles from the foot of the slope, 76 (4)	768	769	1852	1.000
770	46.1306919	78.2025541	Fixed Point at 60 miles from the foot of the slope, 76 (4)	769	770	1852	1.000
771	46.1433316	78.2181713	Fixed Point at 60 miles from the foot of the slope, 76 (4)	770	771	1852	1.000
772	46.1561447	78.2334943	Fixed Point at 60 miles from the foot of the slope, 76 (4)	771	772	1852	1.000
773	46.1691311	78.2485119	Fixed Point at 60 miles from the foot of the slope, 76 (4)	772	773	1852	1.000
774	46.1822892	78.2632218	Fixed Point at 60 miles from the foot of the slope, 76 (4)	773	774	1852	1.000
775	46.1956156	78.2776241	Fixed Point at 60 miles from the foot of the slope, 76 (4)	774	775	1852	1.000

## The French Continental Shelf

FP	Latitude South	Longitude East	Method, Article 76	from PF	to PF	Distance (m)	Distance (Miles)
776	46.2091025	78.2917029	Fixed Point at 60 miles from the foot of the slope, 76 (4)	775	776	1852	1.000
777	46.2227497	78.3054741	Fixed Point at 60 miles from the foot of the slope, 76 (4)	776	777	1852	1.000
778	46.2365509	78.3189174	Fixed Point at 60 miles from the foot of the slope, 76 (4)	777	778	1852	1.000
779	46.2505076	78.3320328	Fixed Point at 60 miles from the foot of the slope, 76 (4)	778	779	1852	1.000
780	46.2646101	78.3448203	Fixed Point at 60 miles from the foot of the slope, 76 (4)	779	780	1852	1.000
781	46.2788601	78.3572709	Fixed Point at 60 miles from the foot of the slope, 76 (4)	780	781	1852	1.000
782	46.2932465	78.3693847	Fixed Point at 60 miles from the foot of the slope, 76 (4)	781	782	1852	1.000
783	46.3077707	78.3811594	Fixed Point at 60 miles from the foot of the slope, 76 (4)	782	783	1852	1.000
784	46.3224295	78.3925904	Fixed Point at 60 miles from the foot of the slope, 76 (4)	783	784	1852	1.000
785	46.3372150	78.4036667	Fixed Point at 60 miles from the foot of the slope, 76 (4)	784	785	1852	1.000
786	46.3521255	78.4143970	Fixed Point at 60 miles from the foot of the slope, 76 (4)	785	786	1852	1.000
787	46.3671563	78.4247703	Fixed Point at 60 miles from the foot of the slope, 76 (4)	786	787	1852	1.000
788	46.3823058	78.4347910	Fixed Point at 60 miles from the foot of the slope, 76 (4)	787	788	1852	1.000
789	46.3975675	78.4444479	Fixed Point at 60 miles from the foot of the slope, 76 (4)	788	789	1852	1.000
790	46.4129368	78.4537388	Fixed Point at 60 miles from the foot of the slope, 76 (4)	789	790	1852	1.000
791	46.4284105	78.4626658	Fixed Point at 60 miles from the foot of the slope, 76 (4)	790	791	1852	1.000
792	46.4439837	78.4712222	Fixed Point at 60 miles from the foot of the slope, 76 (4)	791	792	1852	1.000
793	46.4596549	78.4794081	Fixed Point at 60 miles from the foot of the slope, 76 (4)	792	793	1852	1.000
794	46.4754162	78.4872190	Fixed Point at 60 miles from the foot of the slope, 76 (4)	793	794	1852	1.000
795	46.4912613	78.4946570	Fixed Point at 60 miles from the foot of the slope, 76 (4)	794	795	1852	1.000
796	46.5071964	78.5017110	Fixed Point at 60 miles from the foot of the slope, 76 (4)	795	796	1852	1.000
797	46.5232027	78.5083833	Fixed Point at 60 miles from the foot of the slope, 76 (4)	796	797	1852	1.000
798	46.5392895	78.5146737	Fixed Point at 60 miles from the foot of the slope, 76 (4)	797	798	1852	1.000
799	46.5554397	78.5205802	Fixed Point at 60 miles from the foot of the slope, 76 (4)	798	799	1852	1.000
800	46.5716578	78.5260958	Fixed Point at 60 miles from the foot of the slope, 76 (4)	799	800	1852	1.000
801	46.5879392	78.5312229	Fixed Point at 60 miles from the foot of the slope, 76 (4)	800	801	1852	1.000

## The French Continental Shelf

FP	Latitude South	Longitude East	Method, Article 76	from PF	to PF	Distance (m)	Distance (Miles)
802	46.6042760	78.5359616	Fixed Point at 60 miles from the foot of the slope, 76 (4)	801	802	1852	1.000
803	46.6206621	78.5403049	Fixed Point at 60 miles from the foot of the slope, 76 (4)	802	803	1852	1.000
804	46.6370988	78.5442530	Fixed Point at 60 miles from the foot of the slope, 76 (4)	803	804	1852	1.000
805	46.6535784	78.5478058	Fixed Point at 60 miles from the foot of the slope, 76 (4)	804	805	1852	1.000
806	46.6700948	78.5509634	Fixed Point at 60 miles from the foot of the slope, 76 (4)	805	806	1852	1.000
807	46.6866431	78.5537190	Fixed Point at 60 miles from the foot of the slope, 76 (4)	806	807	1852	1.000
808	46.7032265	78.5560771	Fixed Point at 60 miles from the foot of the slope, 76 (4)	807	808	1852	1.000
809	46.7198296	78.5580309	Fixed Point at 60 miles from the foot of the slope, 76 (4)	808	809	1852	1.000
810	46.7364521	78.5595873	Fixed Point at 60 miles from the foot of the slope, 76 (4)	809	810	1852	1.000
811	46.7530958	78.5607416	Fixed Point at 60 miles from the foot of the slope, 76 (4)	810	811	1852	1.000
812	46.7697420	78.5614894	Fixed Point at 60 miles from the foot of the slope, 76 (4)	811	812	1852	1.000
813	46.7864015	78.5618420	Fixed Point at 60 miles from the foot of the slope, 76 (4)	812	813	1852	1.000
814	46.8030589	78.5617814	Fixed Point at 60 miles from the foot of the slope, 76 (4)	813	814	1852	1.000
815	46.8197158	78.5613232	Fixed Point at 60 miles from the foot of the slope, 76 (4)	814	815	1852	1.000
816	46.8363629	78.5604519	Fixed Point at 60 miles from the foot of the slope, 76 (4)	815	816	1852	1.000
817	46.8530001	78.5591853	Fixed Point at 60 miles from the foot of the slope, 76 (4)	816	817	1852	1.000
818	46.8696168	78.5575054	Fixed Point at 60 miles from the foot of the slope, 76 (4)	817	818	1852	1.000
819	46.8862144	78.5554303	Fixed Point at 60 miles from the foot of the slope, 76 (4)	818	819	1852	1.000
820	46.9027853	78.5529397	Fixed Point at 60 miles from the foot of the slope, 76 (4)	819	820	1852	1.000
821	46.9193265	78.5500539	Fixed Point at 60 miles from the foot of the slope, 76 (4)	820	821	1852	1.000
822	46.9358332	78.5467616	Fixed Point at 60 miles from the foot of the slope, 76 (4)	821	822	1852	1.000
823	46.9522949	78.5430605	Fixed Point at 60 miles from the foot of the slope, 76 (4)	822	823	1852	1.000
824	46.9687161	78.5389642	Fixed Point at 60 miles from the foot of the slope, 76 (4)	823	824	1852	1.000
825	46.9850877	78.5344614	Fixed Point at 60 miles from the foot of the slope, 76 (4)	824	825	1852	1.000
826	47.0014051	78.5295611	Fixed Point at 60 miles from the foot of the slope, 76 (4)	825	826	1852	1.000
827	47.1070844	78.4966086	Fixed Point at 60 miles from the foot of the slope, 76 (4)	826	827	12012	6.486

## The French Continental Shelf

FP	Latitude South	Longitude East	Method, Article 76	from PF	to PF	Distance (m)	Distance (Miles)
828	47.1233458	78.4912951	Fixed Point at 60 miles from the foot of the slope, 76 (4)	827	828	1852	1.000
829	47.1395410	78.4855863	Fixed Point at 60 miles from the foot of the slope, 76 (4)	828	829	1852	1.000
830	47.1556669	78.4794777	Fixed Point at 60 miles from the foot of the slope, 76 (4)	829	830	1852	1.000
831	47.1717250	78.4729717	Fixed Point at 60 miles from the foot of the slope, 76 (4)	830	831	1852	1.000
832	47.1877018	78.4660704	Fixed Point at 60 miles from the foot of the slope, 76 (4)	831	832	1852	1.000
833	47.2036017	78.4587806	Fixed Point at 60 miles from the foot of the slope, 76 (4)	832	833	1852	1.000
834	47.2194142	78.4510955	Fixed Point at 60 miles from the foot of the slope, 76 (4)	833	834	1852	1.000
835	47.2351364	78.4430151	Fixed Point at 60 miles from the foot of the slope, 76 (4)	834	835	1852	1.000
836	47.2507621	78.4345507	Fixed Point at 60 miles from the foot of the slope, 76 (4)	835	836	1852	1.000
837	47.2662945	78.4256979	Fixed Point at 60 miles from the foot of the slope, 76 (4)	836	837	1852	1.000
838	47.2817183	78.4164609	Fixed Point at 60 miles from the foot of the slope, 76 (4)	837	838	1852	1.000
839	47.2970353	78.4068490	Fixed Point at 60 miles from the foot of the slope, 76 (4)	838	839	1852	1.000
840	47.3122440	78.3968462	Fixed Point at 60 miles from the foot of the slope, 76 (4)	839	840	1852	1.000
841	47.3273338	78.3864729	Fixed Point at 60 miles from the foot of the slope, 76 (4)	840	841	1852	1.000
842	47.3423032	78.3757246	Fixed Point at 60 miles from the foot of the slope, 76 (4)	841	842	1852	1.000
843	47.3571447	78.3646102	Fixed Point at 60 miles from the foot of the slope, 76 (4)	842	843	1852	1.000
844	47.3718615	78.3531185	Fixed Point at 60 miles from the foot of the slope, 76 (4)	843	844	1852	1.000
845	47.3864399	78.3412630	Fixed Point at 60 miles from the foot of the slope, 76 (4)	844	845	1852	1.000
846	47.4008832	78.3290481	Fixed Point at 60 miles from the foot of the slope, 76 (4)	845	846	1852	1.000
847	47.4151883	78.3164695	Fixed Point at 60 miles from the foot of the slope, 76 (4)	846	847	1852	1.000
848	47.4293448	78.3035337	Fixed Point at 60 miles from the foot of the slope, 76 (4)	847	848	1852	1.000
849	47.4433481	78.2902499	Fixed Point at 60 miles from the foot of the slope, 76 (4)	848	849	1852	1.000
850	47.4572029	78.2766157	Fixed Point at 60 miles from the foot of the slope, 76 (4)	849	850	1852	1.000
851	47.4708988	78.2626357	Fixed Point at 60 miles from the foot of the slope, 76 (4)	850	851	1852	1.000
852	47.4844312	78.2483143	Fixed Point at 60 miles from the foot of the slope, 76 (4)	851	852	1852	1.000
853	47.4978019	78.2336470	Fixed Point at 60 miles from the foot of the slope, 76 (4)	852	853	1852	1.000

## The French Continental Shelf

FP	Latitude South	Longitude East	Method, Article 76	from PF	to PF	Distance (m)	Distance (Miles)
854	47.5109972	78.2186541	Fixed Point at 60 miles from the foot of the slope, 76 (4)	853	854	1852	1.000
855	47.5240248	78.2033334	Fixed Point at 60 miles from the foot of the slope, 76 (4)	854	855	1852	1.000
856	47.6411986	78.0614355	Fixed Point at 60 miles from the foot of the slope, 76 (4)	855	856	16842	9.094
857	47.6540495	78.0457554	Fixed Point at 60 miles from the foot of the slope, 76 (4)	856	857	1852	1.000
858	47.6667168	78.0297497	Fixed Point at 60 miles from the foot of the slope, 76 (4)	857	858	1852	1.000
859	47.6792019	78.0134205	Fixed Point at 60 miles from the foot of the slope, 76 (4)	858	859	1852	1.000
860	47.6914991	77.9967837	Fixed Point at 60 miles from the foot of the slope, 76 (4)	859	860	1852	1.000
861	47.7036039	77.9798370	Fixed Point at 60 miles from the foot of the slope, 76 (4)	860	861	1852	1.000
862	47.7155119	77.9625826	Fixed Point at 60 miles from the foot of the slope, 76 (4)	861	862	1852	1.000
863	47.7272231	77.9450296	Fixed Point at 60 miles from the foot of the slope, 76 (4)	862	863	1852	1.000
864	47.7387348	77.9271890	Fixed Point at 60 miles from the foot of the slope, 76 (4)	863	864	1852	1.000
865	47.7500349	77.9090498	Fixed Point at 60 miles from the foot of the slope, 76 (4)	864	865	1852	1.000
866	47.7611341	77.8906321	Fixed Point at 60 miles from the foot of the slope, 76 (4)	865	866	1852	1.000
867	47.7720176	77.8719314	Fixed Point at 60 miles from the foot of the slope, 76 (4)	866	867	1852	1.000
868	47.7826868	77.8529590	Fixed Point at 60 miles from the foot of the slope, 76 (4)	867	868	1852	1.000
869	47.7931404	77.8337148	Fixed Point at 60 miles from the foot of the slope, 76 (4)	868	869	1852	1.000
870	47.8033680	77.8142101	Fixed Point at 60 miles from the foot of the slope, 76 (4)	869	870	1852	1.000
871	47.8133772	77.7944405	Fixed Point at 60 miles from the foot of the slope, 76 (4)	870	871	1852	1.000
872	47.8231562	77.7744238	Fixed Point at 60 miles from the foot of the slope, 76 (4)	871	872	1852	1.000
873	47.8327079	77.7541668	Fixed Point at 60 miles from the foot of the slope, 76 (4)	872	873	1852	1.000
874	47.8420251	77.7336627	Fixed Point at 60 miles from the foot of the slope, 76 (4)	873	874	1852	1.000
875	47.8511123	77.7129229	Fixed Point at 60 miles from the foot of the slope, 76 (4)	874	875	1852	1.000
876	47.8599561	77.6919539	Fixed Point at 60 miles from the foot of the slope, 76 (4)	875	876	1852	1.000
877	47.8685626	77.6707627	Fixed Point at 60 miles from the foot of the slope, 76 (4)	876	877	1852	1.000
878	47.8769245	77.6493581	Fixed Point at 60 miles from the foot of the slope, 76 (4)	877	878	1852	1.000
879	47.8850418	77.6277334	Fixed Point at 60 miles from the foot of the slope, 76 (4)	878	879	1852	1.000



## The French Continental Shelf

FP	Latitude South	Longitude East	Method, Article 76	from PF	to PF	Distance (m)	Distance (Miles)
880	47.8929116	77.6059133	Fixed Point at 60 miles from the foot of the slope, 76 (4)	879	880	1852	1.000
881	47.9005310	77.5838888	Fixed Point at 60 miles from the foot of the slope, 76 (4)	880	881	1852	1.000
882	48.0583936	77.1074539	Fixed Point at 60 miles from the foot of the slope, 76 (4)	881	882	39664	21.417
883	48.4212654	76.0645570	Fixed Point at 60 miles from the foot of the slope, 76 (4)	882	883	87342	47.161
884	49.4104188	76.0011494	Fixed Point at 60 miles from the foot of the slope, 76 (4)	883	884	110100	59.449
885	49.5284483	76.3769820	Fixed point located at the intersection between the maritime boundary with Australia with a line linking Fixed Point 884 to point KER-ECS-1609 of the recommendation by the CLCS to Australia	884	885	30239	16.328