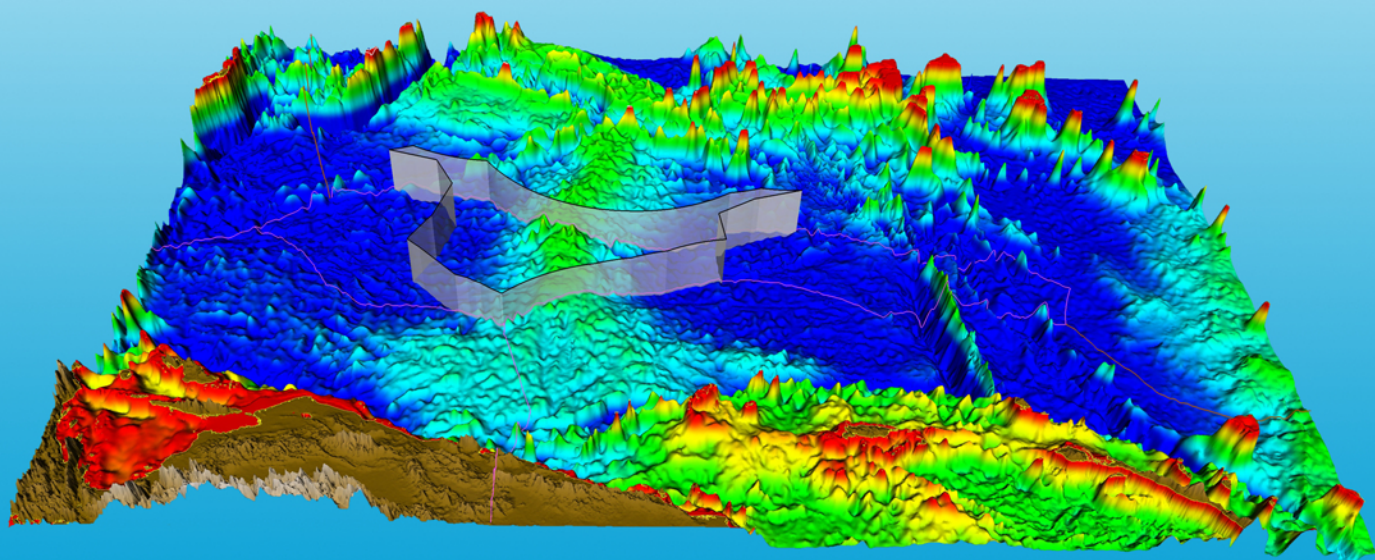


**Submission by the Federated States of Micronesia to
the Commission on the Limits of the Continental Shelf
Concerning the Eauripik Rise**

EXECUTIVE SUMMARY

September 2011



**SUBMISSION BY
THE FEDERATED STATES OF MICRONESIA
TO THE COMMISSION ON THE LIMITS OF THE CONTINENTAL SHELF
CONCERNING THE EAURIPIK RISE**



**EXECUTIVE SUMMARY
FSM-ES-DOC**

Page intentionally left blank



TABLE OF CONTENTS

TABLE OF CONTENTS	i
LIST OF MAPS	ii
LIST OF ANNEXES	ii
PREFACE	iii
1. INTRODUCTION	1
2. PARTIAL SUBMISSION	2
3. MAPS AND COORDINATES	3
4. PROVISIONS OF ARTICLE 76 INVOKED	5
5. ADVISORY ASSISTANCE	5
6. SETTLED AND OUTSTANDING DELIMITATIONS	5
7. ABSENCE OF DISPUTES	6
8. REGIONAL OVERVIEW AND OUTER LIMITS OF THE CONTINENTAL SHELF	7
9. AUTHENTICATION	10
10. NOTES	10
MAP NOTES	10
TABLE NOTES	10
ABBREVIATIONS	11
ANNEX 1	12
FSM-ES-DOC-ANNEX 1	12
ANNEX 2	14
FSM-ES-DOC-ANNEX 2	14



LIST OF MAPS

Map 1

Map depicting the outer limits of the continental shelf of the Federated States of Micronesia indicating the outer limit line and area of continental shelf beyond 200 M. FSM-ES-DOC-MAP 1

Map 2

Map depicting the outer limits of the continental shelf of the Federated States of Micronesia indicating provisions of Article 76 invokedFSM-ES-DOC-MAP 2

LIST OF ANNEXES

Annex 1

Table listing the points defining the outer limits of the continental shelf of the Federated States of Micronesia in the Eauripik Rise Region (Decimal Degrees)FSM-ES-DOC-ANNEX 1

Annex 2

Table listing the points defining the outer limits of the continental shelf of the Federated States of Micronesia in the Eauripik Rise Region (Degrees, Minutes and Seconds).....FSM-ES-DOC-ANNEX 2



PREFACE

The Submission by the Federated States of Micronesia concerning the Eauripik Rise region was prepared by the National Oceanic Resources Management Authority (NORMA) with the assistance of the following technical experts and legal adviser:

Mr. Scott Sweet
GIS Consultant
Dumaguete City, Philippines

Mr. Joshua Brien
Legal Adviser
London, United Kingdom

Dr. Alain Murphy
GeoLimits Consulting
Nova Scotia, Canada



1. INTRODUCTION

- 1-1** This Executive Summary forms part of the Submission by the Federated States of Micronesia to the Commission on the Limits of the Continental Shelf ('the Commission') made pursuant to paragraph 8 of Article 76 of the 1982 United Nations Convention on the Law of the Sea ('the Convention'), in support of the establishment of the outer limits of the continental shelf in the Eauripik Rise region that lies beyond 200 nautical miles ('M') from the baselines from which the breadth of the territorial sea of Federated States of Micronesia is measured.
- 1-2** The Federated States of Micronesia is a small island nation located in the western Pacific Ocean, comprised of some 607 islands situated just above the equator and scattered over an area of approximately 3,008,473 km², and organised as four separate states (Yap, Chuuk, Pohnpei and Kosrae) established under the Constitution of the Federated States of Micronesia ('the Constitution'), ratified in 1978. The islands that form the Federated States of Micronesia are located in what was known as the Eastern and Western Caroline Islands prior to the adoption of the Constitution and the subsequent attainment of independence in 1986. The total land area of the Federated States of Micronesia is approximately 714 km². The State of Pohnpei includes *Pohnpei Island* - the largest island in the Federated States of Micronesia and the location of the capital, Palikir.
- 1-3** The Federated States of Micronesia acceded to the Convention on 29 April 1991. The *Territorial Boundaries & Economic Zones legislation, Title 18* ('Title 18') establishes the maritime zones of the Federated States of Micronesia consistent with the provisions of the Convention. Whilst Title 18 does not explicitly refer to the continental shelf, it includes, by implication, the seabed and subsoil of the continental shelf. In this regard, Article 1 of the Constitution provides that the jurisdiction of the Federated States of Micronesia extends to a marine space of 200 miles measured outward from appropriate baselines, and includes the continental shelf.
- 1-4** In accordance with the paragraph 1 of Article 76 of the Convention, a coastal State such as the Federated States of Micronesia has a continental shelf comprising the seabed and subsoil of the submarine areas that extend beyond the territorial sea throughout the natural prolongation of the land territory to the outer edge of the continental margin, up to the limits provided for in paragraphs 4 to 6 of Article 76, or to a distance of 200 M from the baselines from which the breadth of the territorial sea is measured (hereinafter referred to as 'the territorial sea baselines') where the outer edge of the continental margin does not extend to that distance.
- 1-5** This entitlement to a continental shelf based on the application of Article 76 applies also to Islands in the same manner as it applies to coastal States by operation of Article 121 of the Convention.



1-6 Where the continental shelf extends beyond 200 M from the territorial sea baselines, a coastal State seeking to establish the outer limits of the continental shelf beyond 200 M consistent with the Convention, is required under paragraph 8 of Article 76 to submit information on such outer limits to the Commission on the Limits of the Continental Shelf (hereinafter referred to as 'the Commission'), which makes recommendations to the coastal State concerning the outer limits of the continental shelf consistent with the relevant provisions of Article 76 of the Convention.

1-7 Paragraph 1 of Article 76 of the Convention provides that a coastal State exercises over its continental shelf 'sovereign rights' for the purpose of exploring and exploiting its natural resources (see: Article 77, paragraph 1 of the Convention). Such sovereign rights of the coastal State over its continental shelf are exclusive in the sense that no one may exercise such rights without the express consent of the coastal State (see: Article 77, paragraph 2 of the Convention).

1-8 The Federated States of Micronesia has for the purposes of preparing this Submission, applied the relevant provisions of Article 76 of the Convention, together with the Rules of Procedure of the Commission on the Limits of the Continental Shelf (CLCS/40/Rev.1), adopted by the Commission on 17 April 2008 ('Rules of Procedure'), and the recommendations contained in the Scientific and Technical Guidelines of the Commission on the Limits of the Continental Shelf (CLCS/11) adopted by the Commission on 13 May 1999 ('the Guidelines'). The Federated States of Micronesia has also made reference where appropriate to aspects of the published recommendations concerning other Submissions examined by the Commission to date.

1-9 In accordance with Article 1 of Annex III to the Rules of Procedure and paragraphs 9.1.3 to 9.1.6 of the Guidelines, the Submission is comprised of three parts:

- this Executive Summary (FSM-EAU-ES-DOC);
- the Main Body of the Submission (FSM-EAU-MB-DOC); and,
- Supporting scientific and technical data (FSM-EAU-SD).

1-10 A separate section of this Executive Summary provides a brief outline of the region of continental shelf beyond 200M, including a depiction of the outer limits of the continental shelf determined by the Federated States of Micronesia.

2. PARTIAL SUBMISSION

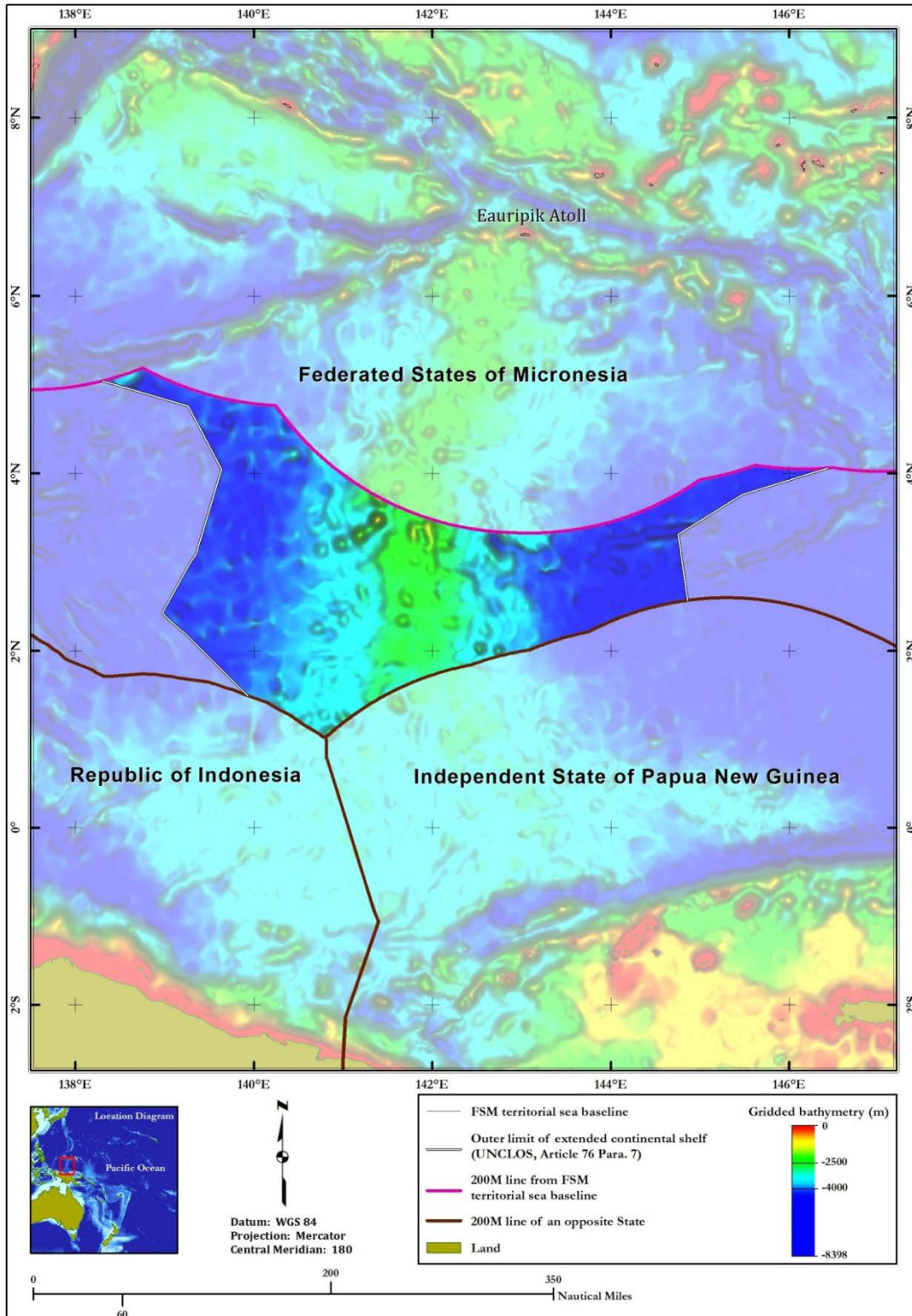
2-1 In accordance with paragraph 3 of Annex I to the Rules of Procedure, this Submission represents a partial submission in respect of a portion only of the continental shelf beyond 200 M from the territorial sea baselines of the Federated States of Micronesia.



- 2-2** The lodgment of this Submission follows the lodgment of the Joint Submission by the Federated States of Micronesia, Papua New Guinea and the Solomon Islands concerning the Ontong Java Plateau on 9 May 2009, made jointly by the Federated States of Micronesia, the Independent State of Papua New Guinea and the Solomon Islands pursuant to paragraph 8 of Article 76 of the Convention in support of the establishment by the three coastal States of the outer limits of the continental shelf in the Ontong Java Plateau Region (see: http://www.un.org/Depts/los/clcs_new/submissions_files/submission_fmgsb_32_2009.htm)
- 2-3** Furthermore, in accordance also with paragraph 3 of Annex I to the Rules of Procedure, submissions for other areas of extended continental shelf may be claimed by the Federated States of Micronesia in the future.

3. MAPS AND COORDINATES

- 3-1** Two maps at an appropriate scale are included in this Executive Summary and have been duly supplied as separate A0-size maps. Map 1 (EAU-MAP-ES-1) depicts the outer limits of the continental shelf of the Federated States of Micronesia in the Eauripik Rise region showing the outer limit line and area of continental shelf extending beyond 200M from the territorial sea baseline. Map 2 (EAU-MAP-ES-2) depicts the outer limits of the continental shelf of the Federated States of Micronesia and provisions of Article 76 invoked.
- 3-2** Lists of coordinates of the Article 76 fixed points that define the outer limits of the continental shelf are supplied in two tables annexed to this Executive Summary. Table 1 (FSM-ES-DOC-ANNEX 1) lists the fixed points defining the outer limits of the continental shelf in the Eauripik Rise region in decimal degrees. Table 2 (FSM-ES-DOC-ANNEX 2) lists the same points in degrees, minutes and seconds. The provision of Article 76 invoked to support the establishment of each fixed point is indicated in both tables, together with the distance between adjacent points.
- 3-3** In the event of any discrepancy between the two formats of the coordinates for a particular fixed point, the Federated States of Micronesia relies upon the coordinates farthest seaward from its baseline, subject to compliance with the requirements of the relevant provisions of Article 76 of the Convention.



Map 1. The outer limits of the continental shelf of the Federated States of Micronesia in the Eauripik Rise Region showing the outer limit line and area of continental shelf extending beyond 200M from the territorial sea baseline.



4. PROVISIONS OF ARTICLE 76 INVOKED

- 4-1** Paragraphs 4 to 6 of Article 76 set out specific formula and constraints by which a coastal State such as the Federated States of Micronesia may establish the outer edge of its continental margin, and its legal continental shelf, wherever that margin extends beyond 200 M from the baselines from which the breadth of the territorial sea is measured.
- 4-2** As set out in paragraph 7 of Article 76, the coastal State is to delineate the outer limits of those portions of its continental shelf that extend beyond 200 M from the baselines by straight lines not exceeding 60 M in length, connecting fixed points defined by coordinates of latitude and longitude.
- 4-3** The Federated States of Micronesia invokes paragraphs 3, 4(a)(ii), 5 and 7 of Article 76 of the Convention in support of the determination of the outer limits of the continental shelf included in the Submission, as outlined in Section 6 of this Executive Summary.

5. ADVISORY ASSISTANCE

- 5-1** The Federated States of Micronesia was assisted in the preparation of this Submission by Mr Philip Alexander Symonds (Australia), a serving member of the Commission.
- 5-2** A list of advisers and technical experts who provided legal and technical assistance to the Federated States of Micronesia during the preparation of the Submission is included in the Preface to this Executive Summary.

6. SETTLED AND OUTSTANDING DELIMITATIONS

- 6-1** Title 18 provides that in cases where the Exclusive Economic Zone ('EEZ') of the Federated States of Micronesia overlaps with the EEZ of an opposite or adjacent coastal State, nothing in the Act operates to prevent the delimitation of such an area by agreement entered into between the Federated States of Micronesia and an opposite coastal State (see: section 7).
- 6-2** The Federated States of Micronesia has delimited maritime boundaries with the Republic of Palau in respect of those areas where the EEZ entitlements of the Federated States of Micronesia and those of Palau overlapped under the 2006 Palau-Federated States of Micronesia Maritime Boundary Treaty (see:



<http://www.un.org/Depts/los/LEGISLATIONANDTREATIES/STATEFILES/FSM.htm>), which is referred to for information purposes only.

- 6-3** The Federated States of Micronesia notes that the present Submission may give rise to delimitations with the Republic of Indonesia and the Independent State of Papua New Guinea respectively, with respect to a potential overlap between the area of extended continental shelf contained in this Submission and areas of extended continental shelf that may potentially be the subject of submissions by either or both of these neighbouring coastal States. The Federated States of Micronesia has formally notified the relevant coastal States of the making of this Submission, and has given an assurance that the lodgement and subsequent consideration of the Submission by the Commission shall be without prejudice to the determination of maritime boundaries under such circumstances.

7. ABSENCE OF DISPUTES

- 7-1** Article 9 of Annex II to the Convention provides that the actions of the Commission shall not prejudice matters relating to the delimitation of boundaries between States with opposite or adjacent coasts. The Federated States of Micronesia notes in this regard that the Commission has accordingly adopted a practice, contained in Annex I to the Rules of Procedure, which is intended to prevent the consideration of any submission that implicates or impacts upon a disputed continental shelf without the consent of the parties in dispute.
- 7-2** In accordance with paragraph 2(a) of Annex I to the Rules of Procedure, the Federated States of Micronesia wishes to inform the Commission that the area of the continental shelf that is the subject of this Submission is not subject to any dispute between the Federated States of Micronesia and any other State(s).
- 7-3** Further, in accordance with paragraph 2(b) of Annex I to the Rules of Procedure, the Federated States of Micronesia assures the Commission that, in its view, the consideration of this Submission will not prejudice matters relating to the delimitation of boundaries between the Federated States of Micronesia and any other State(s). The Federated States of Micronesia further confirms that the entire submission is submitted and should be considered without prejudice to any potential delimitation of maritime boundaries with neighbouring coastal States.



8. REGIONAL OVERVIEW AND OUTER LIMITS OF THE CONTINENTAL SHELF

- 8-1** The continental shelf for the Federated States of Micronesia has been defined primarily based on morphology and comprises the Eauripik Rise and all related submarine elevations.
- 8-2** The continental shelf of the Federated States of Micronesia extends beyond 200 M along the Eauripik Rise – a broadly north-south trending submarine elevation occurring in the western Equatorial Pacific at depths ranging from 3,500 m to less than 2,000 m. It has an average thickness of 320 km along its length although fans out to over 700 km at its southern end.
- 8-3** The Eauripik Rise, the associated Caroline Ridge and other related features were formed by hotspot related volcanism, a unique geological process distinct from the formation of normal oceanic seafloor, and represent the submerged prolongation of Eauripik Atoll, part of the land territory of the Federated States of Micronesia.
- 8-4** The natural prolongation of the continental shelf of the Federated States of Micronesia is predicated on an extension of the submerged prolongation of the island landmass of the atolls that together form the land territory of the country, with the submerged prolongation of *Eauripik Atoll* specifically demonstrated in this Submission. A detailed examination of the geology of the region is presented in [Chapter 2](#) of the Main Body of the Submission, which includes a discussion that is intended to demonstrate clearly the natural prolongation from the relevant landmass.
- 8-5** The scientific and technical data submitted by the Federated States of Micronesia in support of this Submission establishes that the outer edge of the continental margin extends beyond 200 M measured from the territorial sea baselines.
- 8-6** Applying the relevant provisions of Article 76, the outer limit of the outer limit of the extended continental shelf of the Federated States of Micronesia is defined by a total of 64 Article 76 fixed points, of which:
- 39 are defined by arcs 60 M from the foot of the slope (Article 76, paragraph 4(a)(ii));
 - 20 are defined by the constraint line 350 M from the territorial sea baselines (Article 76, paragraph 5);
 - 2 are points defined by the Federated States of Micronesia 200 M line. One commences at a fixed point in the Western area on the 200 M line generated from Ngulu Atoll (FSM-ECS-FP1) in Yap State and the other terminates at a fixed point in the Eastern area on the 200 M line generated from Elato Atoll (FSM-ECS-FP64), also in Yap State;

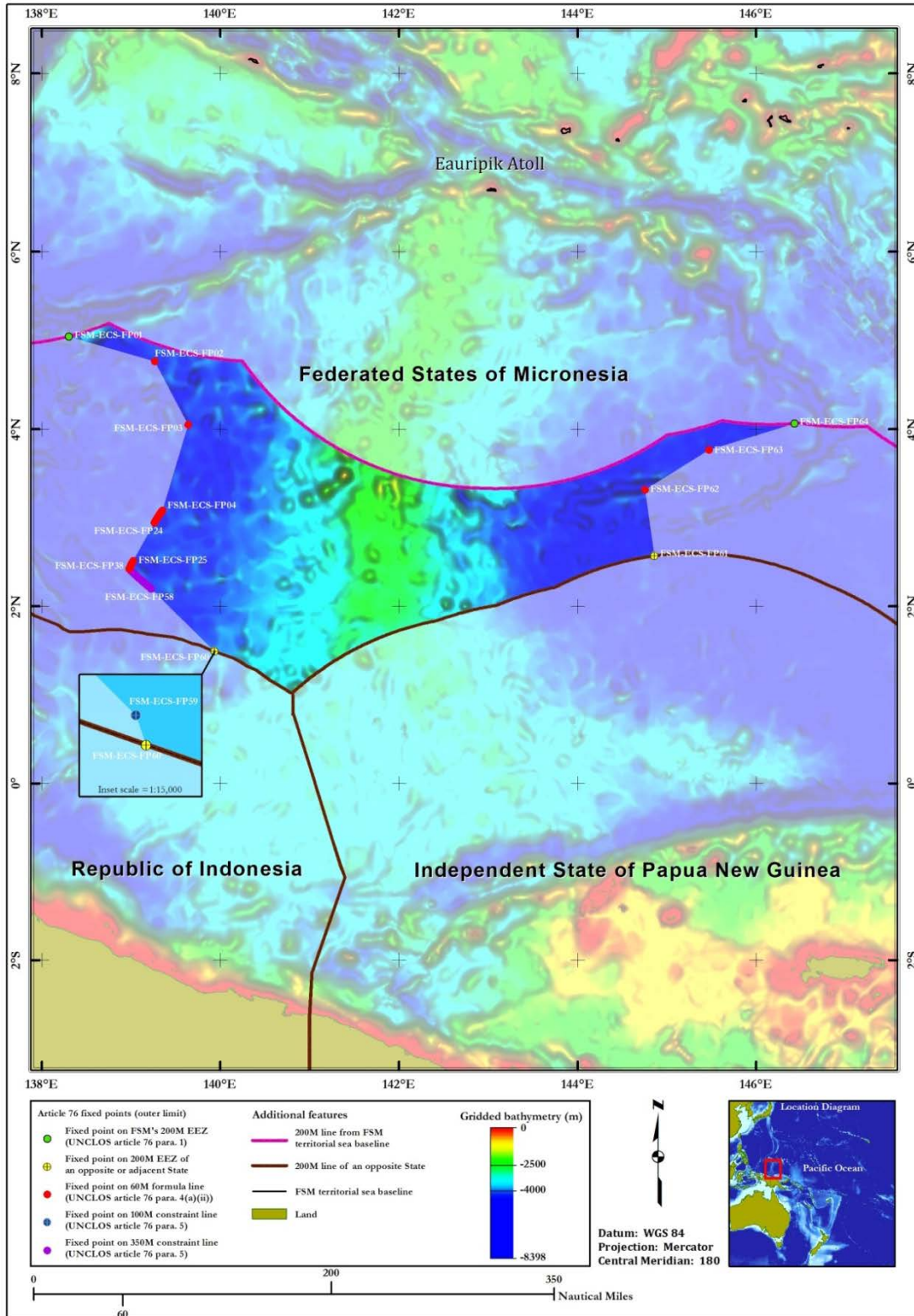


- 1 is defined by the constraint line 100 M from the 2500m isobath (Article 76, paragraph 5), (FSM-ECS-FP59);
- 1 is a point (FSM-ECS-FP60) in the Western Area where the outer limit line joins the 200 M from the territorial sea baseline of the Republic of Indonesia;
- 1 is a point (FSM-ECS-FP61) in the Eastern Area where the outer limit line joins the 200 M from the territorial sea baseline of the Independent State of Papua New Guinea.

8-7 The outer limits of the continental shelf extending beyond 200 M of the territorial sea baseline has been delineated by geodesic straight lines not exceeding 60 M in length used to connect the fixed points ('Article 76 fixed points'), defined by coordinates of latitude and longitude.

8-8 The outer limits of the continental shelf of the Federated States of Micronesia extending beyond 200 M from the baseline from which the breadth of the territorial sea is measured encloses an area of approximately 143,859 km².

8-9 Lists of the fixed points that have been constructed to delineate the outer limits of the continental shelf are given in the annexes to this Executive Summary.



Map 2. The outer limits of the continental shelf of the Federated States of Micronesia and provisions of Article 76 invoked.



9. AUTHENTICATION

- 9-1** All maps, charts and databases forming part of the Federated States of Micronesia were prepared by NORMA, which is responsible for preparing such material and for certifying its quality and reliability.

10. NOTES

MAP NOTES

- 10-1** For the purpose of the maps contained in this Submission, the EEZ entitlement of the Federated States of Micronesia has been depicted in accordance with, and subject to, the provisions of Title 18 and any applicable maritime boundary treaty concluded by the Federated States of Micronesia.
- 10-2** The depiction of 200 M lines other than those established by the Federated States of Micronesia is for the sole purpose of demonstrating the location of those fixed points at which the outer limit line delineating the outer limits of the continental shelf commences and terminates respectively. The construction of such 200M lines is based on information available at the time of production, and should not be taken to signify acceptance of the validity at international law of base-points, maritime zones or waters determined by another coastal State, with the exception of those cases where maritime boundary lines, coordinates or boundaries have been agreed in a maritime boundary treaty or agreement concluded between the Federated States of Micronesia and an opposite or adjacent coastal State.

TABLE NOTES

- 10-3** The tables included at Annex 1 and Annex 2 to this Executive Summary list by number (identifiers) and coordinates (in latitude and longitude) the fixed points that define the outer limits of the continental shelf of the Federated States of Micronesia. The distance in nautical miles (M) from one point on the outer limit line to the next is given in the fourth column of the table.
- 10-4** All coordinates of fixed points defined according to the provisions of Article 76 of the Convention in this document are expressed using the World Geodetic System 1984 (WGS 84) reference coordinate system.



ABBREVIATIONS

10-5

The following abbreviations are used in the tables included at Annex 1 and Annex 2 to denote the Article 76 provisions invoked:

- 60M: 60 M Formula point (Article 76, para. 4(a)(ii))
- 100M: 100 M Constraint point (Article 76, para. 5)
- 200M: 200 M line from the FSM territorial sea baseline (Article 76, para. 1)
- 350M: 350 M Constraint point (Article 76, para. 5).

Other abbreviations used:

- 200M other: 200 M line from the territorial sea baseline of an opposite or adjacent coastal State
- DD: Decimal degrees
- DMS: Degrees, minutes, seconds
- ECS: Extended continental shelf
- FP: Fixed point
- M: nautical mile (1,852 meters)



ANNEX 1

FSM-ES-DOC-ANNEX 1

ECS Point	Latitude (DD)	Longitude (DD)	Distance to previous (M)	Article 76 Provision Invoked
West				
FSM-ECS-FP1	5.044080	138.303314	0.000	200M
FSM-ECS-FP2	4.761078	139.264557	59.997	60M
FSM-ECS-FP3	4.046770	139.635880	48.107	60M
FSM-ECS-FP4	3.083654	139.350800	59.995	60M
FSM-ECS-FP5	3.079220	139.347321	0.337	60M
FSM-ECS-FP6	3.072606	139.342209	0.500	60M
FSM-ECS-FP7	3.065949	139.337158	0.500	60M
FSM-ECS-FP8	3.059249	139.332169	0.500	60M
FSM-ECS-FP9	3.052509	139.327225	0.500	60M
FSM-ECS-FP10	3.045727	139.322342	0.500	60M
FSM-ECS-FP11	3.038903	139.317505	0.500	60M
FSM-ECS-FP12	3.032039	139.312729	0.500	60M
FSM-ECS-FP13	3.025135	139.308029	0.500	60M
FSM-ECS-FP14	3.018191	139.303360	0.500	60M
FSM-ECS-FP15	3.011210	139.298767	0.500	60M
FSM-ECS-FP16	3.004190	139.294220	0.500	60M
FSM-ECS-FP17	2.997133	139.289734	0.500	60M
FSM-ECS-FP18	2.990038	139.285309	0.500	60M
FSM-ECS-FP19	2.982907	139.280945	0.500	60M
FSM-ECS-FP20	2.975740	139.276642	0.500	60M
FSM-ECS-FP21	2.968536	139.272400	0.500	60M
FSM-ECS-FP22	2.961296	139.268204	0.500	60M
FSM-ECS-FP23	2.954022	139.264084	0.500	60M
FSM-ECS-FP24	2.946713	139.260010	0.500	60M
FSM-ECS-FP25	2.511902	139.021256	29.656	60M
FSM-ECS-FP26	2.504546	139.017273	0.500	60M
FSM-ECS-FP27	2.497155	139.013367	0.500	60M
FSM-ECS-FP28	2.489733	139.009506	0.500	60M
FSM-ECS-FP29	2.482279	139.005707	0.500	60M
FSM-ECS-FP30	2.474794	139.001984	0.500	60M
FSM-ECS-FP31	2.467278	138.998322	0.500	60M
FSM-ECS-FP32	2.459730	138.994705	0.500	60M
FSM-ECS-FP33	2.452153	138.991165	0.500	60M
FSM-ECS-FP34	2.444547	138.987686	0.500	60M



ECS Point	Latitude (DD)	Longitude (DD)	Distance to previous (M)	Article 76 Provision Invoked
FSM-ECS-FP35	2.436911	138.984268	0.500	60M
FSM-ECS-FP36	2.429246	138.980911	0.500	60M
FSM-ECS-FP37	2.421553	138.977615	0.500	60M
FSM-ECS-FP38	2.419896	138.976929	0.107	60M
FSM-ECS-FP39	2.409062	138.988403	0.945	350M
FSM-ECS-FP40	2.397640	139.000580	1.000	350M
FSM-ECS-FP41	2.386253	139.012787	1.000	350M
FSM-ECS-FP42	2.374899	139.025040	1.000	350M
FSM-ECS-FP43	2.363580	139.037308	1.000	350M
FSM-ECS-FP44	2.352296	139.049622	1.000	350M
FSM-ECS-FP45	2.341047	139.061951	1.000	350M
FSM-ECS-FP46	2.329834	139.074326	1.000	350M
FSM-ECS-FP47	2.318656	139.086731	1.000	350M
FSM-ECS-FP48	2.307513	139.099167	1.000	350M
FSM-ECS-FP49	2.296407	139.111618	1.000	350M
FSM-ECS-FP50	2.285335	139.124115	1.000	350M
FSM-ECS-FP51	2.274300	139.136643	1.000	350M
FSM-ECS-FP52	2.263300	139.149200	1.000	350M
FSM-ECS-FP53	2.252337	139.161789	1.000	350M
FSM-ECS-FP54	2.241410	139.174408	1.000	350M
FSM-ECS-FP55	2.230519	139.187058	1.000	350M
FSM-ECS-FP56	2.219664	139.199738	1.000	350M
FSM-ECS-FP57	2.208845	139.212448	1.000	350M
FSM-ECS-FP58	2.198063	139.225189	1.000	350M
FSM-ECS-FP59	1.490553	139.934280	59.993	100M
FSM-ECS-FP60	1.489705	139.934570	0.054	200M other
East				
FSM-ECS-FP61	2.568372	144.859131	0.000	200M other
FSM-ECS-FP62	3.314987	144.753891	45.023	60M
FSM-ECS-FP63	3.764206	145.469986	50.647	60M
FSM-ECS-FP64	4.061144	146.425812	59.998	200M

Table listing the points defining the outer limits of the Extended Continental Shelf of the Federated States of Micronesia in the Eauripik Rise region (Decimal Degrees)



ANNEX 2

FSM-ES-DOC-ANNEX 2

ECS Point	Latitude (DMS)	Longitude (DMS)	Distance to previous (M)	Article 76 Provision Invoked
West				
FSM-ECS-FP1	5° 02' 38.69" N	138° 18' 11.93" E	0.000	200M
FSM-ECS-FP2	4° 45' 39.88" N	139° 15' 52.38" E	59.997	60M
FSM-ECS-FP3	4° 02' 48.37" N	139° 38' 09.18" E	48.107	60M
FSM-ECS-FP4	3° 05' 01.16" N	139° 21' 02.90" E	59.995	60M
FSM-ECS-FP5	3° 04' 45.19" N	139° 20' 50.36" E	0.337	60M
FSM-ECS-FP6	3° 04' 21.38" N	139° 20' 31.97" E	0.500	60M
FSM-ECS-FP7	3° 03' 57.42" N	139° 20' 13.78" E	0.500	60M
FSM-ECS-FP8	3° 03' 33.30" N	139° 19' 55.80" E	0.500	60M
FSM-ECS-FP9	3° 03' 09.03" N	139° 19' 38.01" E	0.500	60M
FSM-ECS-FP10	3° 02' 44.62" N	139° 19' 20.42" E	0.500	60M
FSM-ECS-FP11	3° 02' 20.05" N	139° 19' 03.04" E	0.500	60M
FSM-ECS-FP12	3° 01' 55.34" N	139° 18' 45.85" E	0.500	60M
FSM-ECS-FP13	3° 01' 30.49" N	139° 18' 28.89" E	0.500	60M
FSM-ECS-FP14	3° 01' 05.49" N	139° 18' 12.10" E	0.500	60M
FSM-ECS-FP15	3° 00' 40.36" N	139° 17' 55.55" E	0.500	60M
FSM-ECS-FP16	3° 00' 15.08" N	139° 17' 39.20" E	0.500	60M
FSM-ECS-FP17	2° 59' 49.68" N	139° 17' 23.06" E	0.500	60M
FSM-ECS-FP18	2° 59' 24.14" N	139° 17' 07.13" E	0.500	60M
FSM-ECS-FP19	2° 58' 58.47" N	139° 16' 51.42" E	0.500	60M
FSM-ECS-FP20	2° 58' 32.66" N	139° 16' 35.91" E	0.500	60M
FSM-ECS-FP21	2° 58' 06.73" N	139° 16' 20.63" E	0.500	60M
FSM-ECS-FP22	2° 57' 40.67" N	139° 16' 05.56" E	0.500	60M
FSM-ECS-FP23	2° 57' 14.48" N	139° 15' 50.70" E	0.500	60M
FSM-ECS-FP24	2° 56' 48.17" N	139° 15' 36.05" E	0.500	60M
FSM-ECS-FP25	2° 30' 42.85" N	139° 01' 16.52" E	29.656	60M
FSM-ECS-FP26	2° 30' 16.37" N	139° 01' 02.21" E	0.500	60M
FSM-ECS-FP27	2° 29' 49.76" N	139° 00' 48.11" E	0.500	60M
FSM-ECS-FP28	2° 29' 23.04" N	139° 00' 34.24" E	0.500	60M
FSM-ECS-FP29	2° 28' 56.20" N	139° 00' 20.57" E	0.500	60M
FSM-ECS-FP30	2° 28' 29.26" N	139° 00' 07.15" E	0.500	60M
FSM-ECS-FP31	2° 28' 02.20" N	138° 59' 53.94" E	0.500	60M
FSM-ECS-FP32	2° 27' 35.03" N	138° 59' 40.96" E	0.500	60M
FSM-ECS-FP33	2° 27' 07.75" N	138° 59' 28.20" E	0.500	60M
FSM-ECS-FP34	2° 26' 40.37" N	138° 59' 15.67" E	0.500	60M



ECS Point	Latitude (DMS)	Longitude (DMS)	Distance to previous (M)	Article 76 Provision Invoked
FSM-ECS-FP35	2° 26' 12.88" N	138° 59' 03.36" E	0.500	60M
FSM-ECS-FP36	2° 25' 45.28" N	138° 58' 51.28" E	0.500	60M
FSM-ECS-FP37	2° 25' 17.59" N	138° 58' 39.43" E	0.500	60M
FSM-ECS-FP38	2° 25' 11.63" N	138° 58' 36.96" E	0.107	60M
FSM-ECS-FP39	2° 24' 32.62" N	138° 59' 18.27" E	0.945	350M
FSM-ECS-FP40	2° 23' 51.50" N	139° 00' 02.11" E	1.000	350M
FSM-ECS-FP41	2° 23' 10.51" N	139° 00' 46.06" E	1.000	350M
FSM-ECS-FP42	2° 22' 29.64" N	139° 01' 30.13" E	1.000	350M
FSM-ECS-FP43	2° 21' 48.89" N	139° 02' 14.33" E	1.000	350M
FSM-ECS-FP44	2° 21' 08.26" N	139° 02' 58.63" E	1.000	350M
FSM-ECS-FP45	2° 20' 27.77" N	139° 03' 43.05" E	1.000	350M
FSM-ECS-FP46	2° 19' 47.40" N	139° 04' 27.58" E	1.000	350M
FSM-ECS-FP47	2° 19' 07.16" N	139° 05' 12.22" E	1.000	350M
FSM-ECS-FP48	2° 18' 27.05" N	139° 05' 56.98" E	1.000	350M
FSM-ECS-FP49	2° 17' 47.06" N	139° 06' 41.84" E	1.000	350M
FSM-ECS-FP50	2° 17' 07.21" N	139° 07' 26.82" E	1.000	350M
FSM-ECS-FP51	2° 16' 27.48" N	139° 08' 11.92" E	1.000	350M
FSM-ECS-FP52	2° 15' 47.88" N	139° 08' 57.13" E	1.000	350M
FSM-ECS-FP53	2° 15' 08.41" N	139° 09' 42.44" E	1.000	350M
FSM-ECS-FP54	2° 14' 29.08" N	139° 10' 27.87" E	1.000	350M
FSM-ECS-FP55	2° 13' 49.87" N	139° 11' 13.41" E	1.000	350M
FSM-ECS-FP56	2° 13' 10.79" N	139° 11' 59.05" E	1.000	350M
FSM-ECS-FP57	2° 12' 31.84" N	139° 12' 44.81" E	1.000	350M
FSM-ECS-FP58	2° 11' 53.03" N	139° 13' 30.67" E	1.000	350M
FSM-ECS-FP59	1° 29' 25.99" N	139° 56' 03.41" E	59.993	100M
FSM-ECS-FP60	1° 29' 22.94" N	139° 56' 04.44" E	0.054	200M other
East				
FSM-ECS-FP61	2° 34' 06.14" N	144° 51' 32.85" E	0.000	200M other
FSM-ECS-FP62	3° 18' 53.95" N	144° 45' 13.99" E	45.023	60M
FSM-ECS-FP63	3° 45' 51.14" N	145° 28' 11.98" E	50.647	60M
FSM-ECS-FP64	4° 03' 40.12" N	146° 25' 32.94" E	59.998	200M

Table listing the points defining the outer limits of the Extended Continental Shelf of the Federated States of Micronesia in the Eauripik Rise region (Degrees, Minutes, Seconds)