

**EXECUTIVE SUMMARY**

**SUBMISSION MADE BY THE GABONESE REPUBLIC FOR THE EXTENSION OF ITS  
CONTINENTAL SHELF BEYOND 200 NAUTICAL MILES PURSUANT TO ARTICLE 76  
OF THE UNITED NATIONS CONVENTION ON THE LAW OF THE SEA**

**EXECUTIVE SUMMARY**

**1. INTRODUCTION**

This submission to the Commission on the Limits of the Continental Shelf is made by the Government of the Gabonese Republic pursuant to article 76, paragraph 8, of the Convention in support of the establishment of the outer limit of the continental shelf of the Gabonese Republic at the continental margin of West Africa in the Atlantic Ocean.

**2. OUTER LIMIT OF THE CONTINENTAL SHELF OF THE GABONESE REPUBLIC**

This submission concerns the outer limit of the continental shelf of the Gabonese Republic in its entirety and is the complete submission of Gabon.

**3. PROVISIONS OF ARTICLE 76 INVOKED**

The outer limits contained in this submission are based on the provisions of article 76, paragraphs 4 (a) (ii), 4 (b), 5 and 7.

**4. NAMES OF ANY COMMISSION MEMBERS WHO PROVIDED ADVICE DURING THE PREPARATION OF THE SUBMISSION**

No advice was provided by any member of the Commission.

**5. ABSENCE OF DISPUTES**

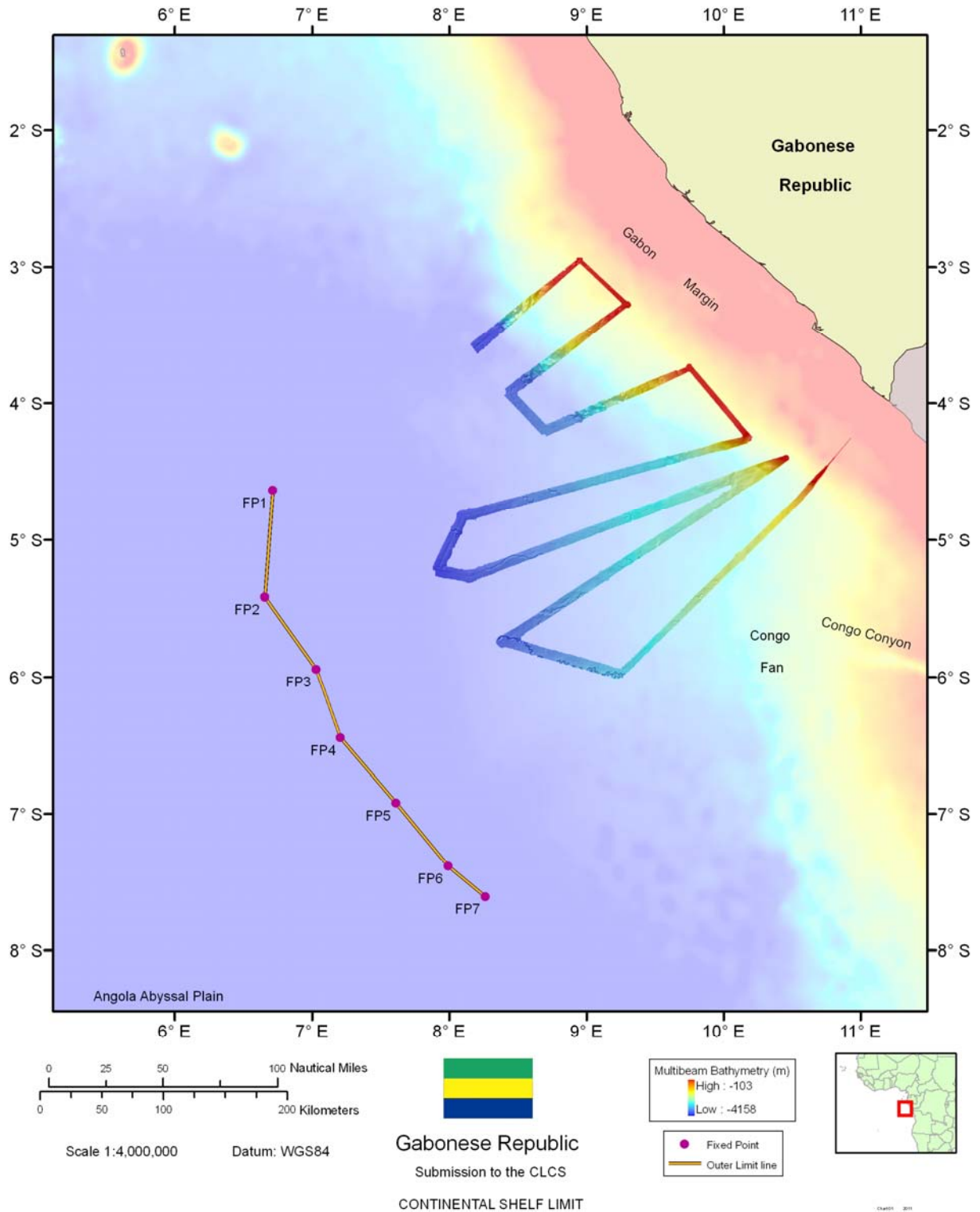
In accordance with paragraph 2 (a) of annex I to the Rules of Procedure of the Commission, the Gabonese Republic hereby informs the Commission that the area of continental shelf to which this submission refers is not the subject of any dispute between the Gabonese Republic and any other State.

**6. DESCRIPTION OF THE OUTER LIMIT OF THE CONTINENTAL SHELF OF THE GABONESE REPUBLIC**

The outer limit of the continental shelf of Gabon may be delineated with reference to article 76, paragraph 4 (a) (i) (line where the thickness of sedimentary rocks is at least 1 per cent). Seven foot of the continental slope points have been identified along the continental margin (FOS 1 to FOS 7), two of which contribute to the outer limit (FOS 2 and FOS 6). From those two FOS points, seven fixed points (FP1 to FP7) have been determined in accordance with article 76, paragraph 4 (a) (i). None of these points is more than 350 nautical miles from the baseline and none is more than 60 nautical miles from any neighbouring point.

**THE GABONESE REPUBLIC – ARTICLE 76 SUBMISSION**

**EXECUTIVE SUMMARY**



**Figure 1 Outer limit of the continental shelf of the Gabonese Republic beyond 200 nautical miles.**

**THE GABONESE REPUBLIC – ARTICLE 76 SUBMISSION**

**EXECUTIVE SUMMARY**

F P	Latitude (S)	Longitude (E)	Method	From FP	To FP	Distance (M)
1	4.63277	6.71311	Fixed point where the thickness of sedimentary rocks is greater than 1 per cent of the distance from point FOS 2			
2	5.41406	6.65525	Fixed point where the thickness of sedimentary rocks is greater than 1 per cent of the distance from point FOS 2	1	2	46.77
3	5.9439	7.03018	Fixed point where the thickness of sedimentary rocks is greater than 1 per cent of the distance from point FOS 2	2	3	38.78
4	6.44559	7.20841	Fixed point where the thickness of sedimentary rocks is greater than 1 per cent of the distance from point FOS 6	3	4	31.79
5	6.92166	7.61136	Fixed point where the thickness of sedimentary rocks is greater than 1 per cent of the distance from point FOS 6	4	5	37.24
6	7.38301	7.99342	Fixed point where the thickness of sedimentary rocks is greater than 1 per cent of the distance from point FOS 6	5	6	35.75
7	7.60803	8.26381	Fixed point where the thickness of sedimentary rocks is greater than 1 per cent of the distance from point FOS 6	6	7	20.98

**Table 1 List of coordinates and method of determining each fixed point describing the outer limit.**

**7. STATE BODIES RESPONSIBLE FOR PREPARING THE SUBMISSION**

This submission, together with all maps, figures, enclosures, annexes and digital databases, was prepared by:

- the National Committee on the Project for the Extension of the Continental Shelf of the Gabonese Republic, GABEx-PC, Office of the President;
- the Ministry of Foreign Affairs;

And external consultants:

- DOF Subsea, AS, Norway;
- Maritime Zone Solutions Limited, United Kingdom.