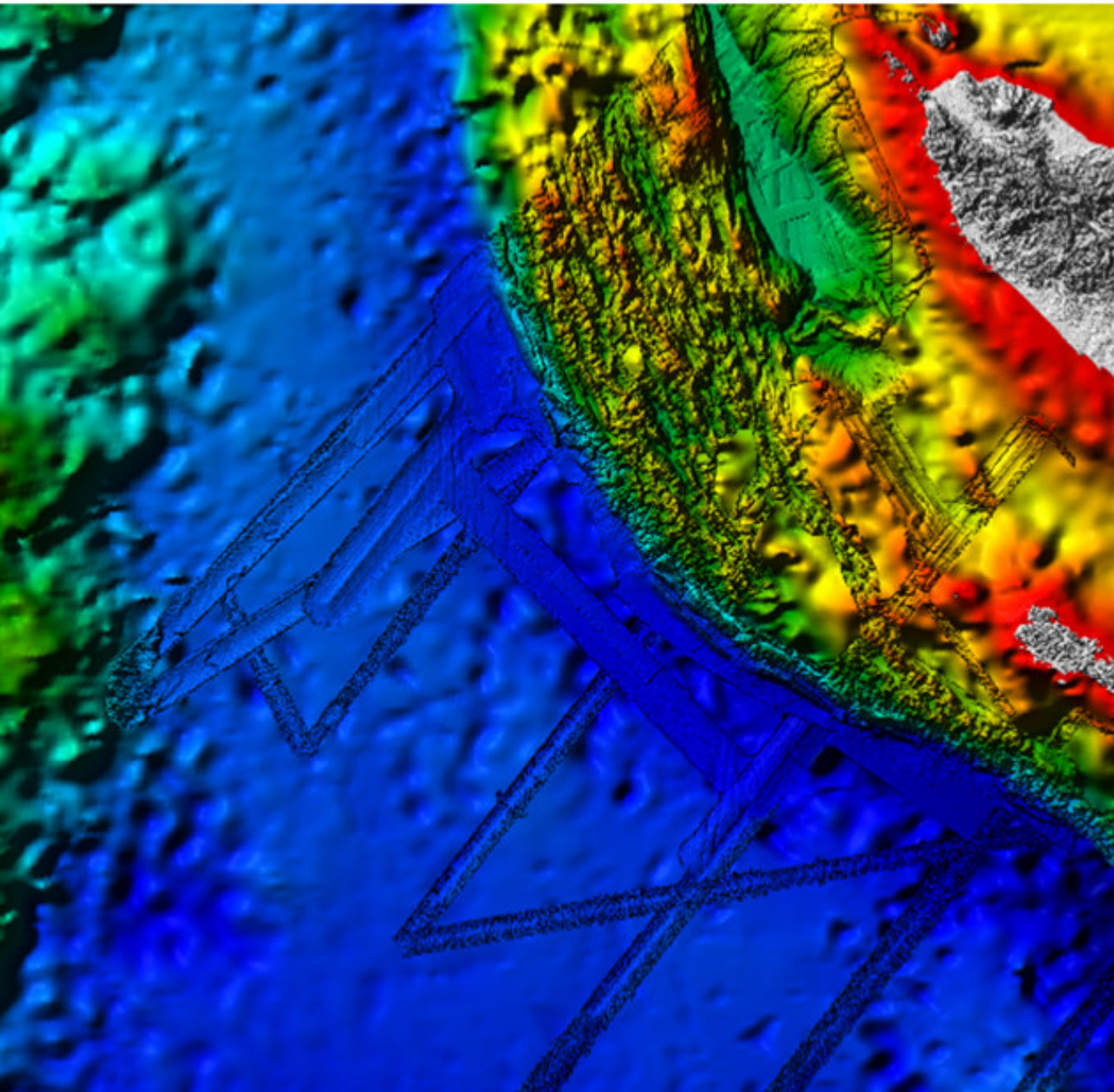




Continental Shelf Submission of Indonesia

Partial Submission in respect of
the area of North West of Sumatra

Executive Summary



ISBN : 978-979-26-6922-0



© Government of the Republic of Indonesia 2008

**Partial Submission in respect of
the area of North West of Sumatra**

Executive Summary

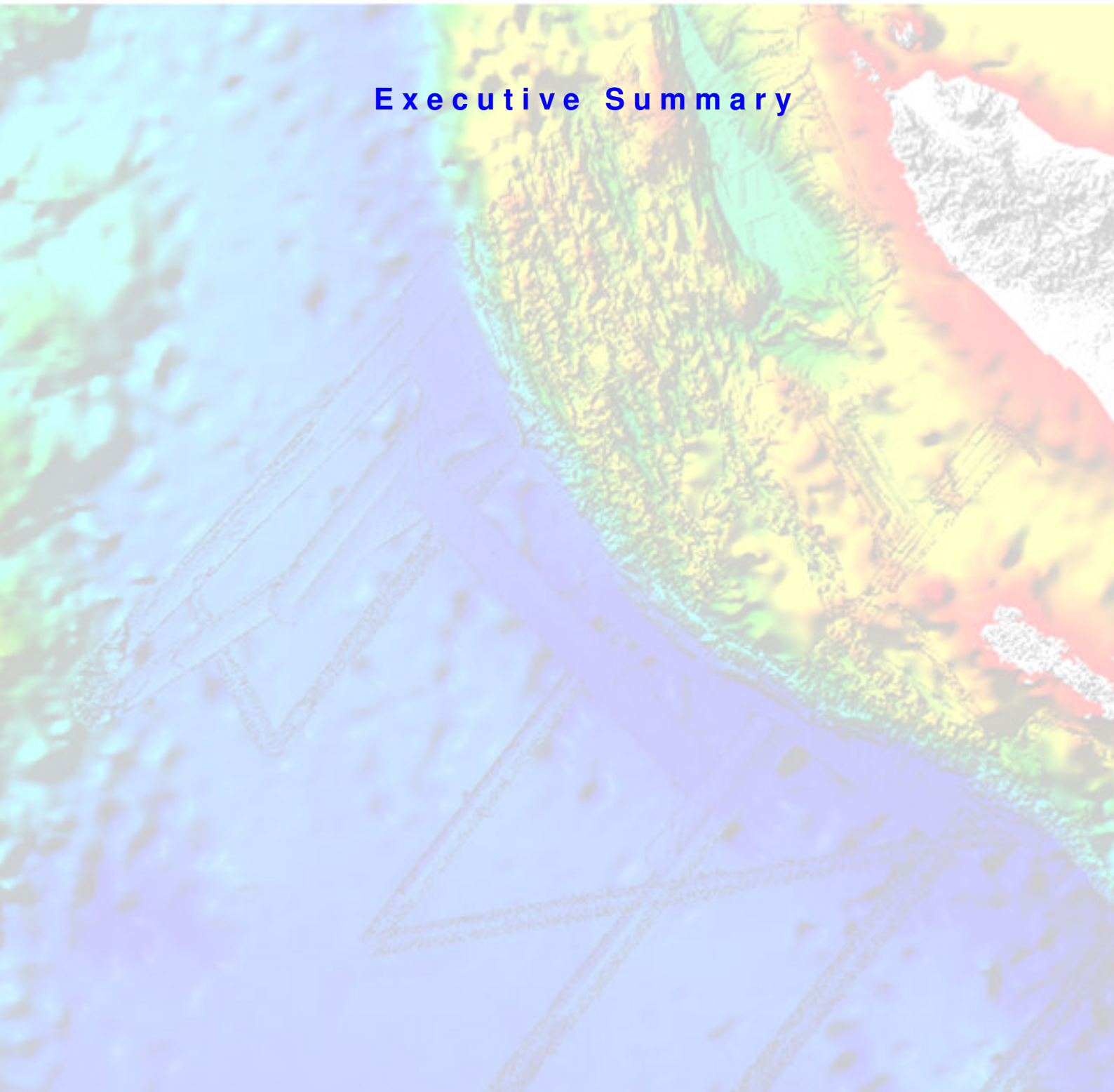


Table of Contents

1. Introduction	4
2. Outer limit of the extended continental shelf in the area of North West of Sumatra	4
3. Specific provisions of Article 76 invoked to support this partial submission.....	6
4. Names of Commission Members who provided advice during the preparation of the partial submission	6
5. Absence of disputes	6
6. Detailed description of the outer limit of the extended continental shelf in the area of North West of Sumatra.....	8
7. State Bodies responsible for the preparation of the extended Continental Shelf Submission of Indonesia.....	8

List of Figure

Figure 1. An overview of the area of extended continental shelf in respect of the area of North West of Sumatra..... 5

Figure 2. Details of the formula line used to define the outer limit of extended continental shelf in the area of North West of Sumatra..... 7

Appendix

Appendix 1.1: List of coordinates defining the outer limits of extended continental shelf in the area of North West of Sumatra (All coordinates relate to the WGS 84 geodetic reference system)..... 10

1. Introduction

By Djoeanda Declaration of 13 December 1957, Indonesia declared itself as an archipelagic state. Indonesia later drew archipelagic baselines connecting base points located in its outermost islands by Law No. 4 of 1960. Prior to the conclusion of the 1982 United Nations Convention on the Law of the Sea (hereinafter UNCLOS), Indonesia established its continental shelf through a number of agreements on the delimitation of continental shelf with a number of its neighboring states in various sea areas, namely with India in Indian Ocean and Andaman Sea, Thailand in the Andaman Sea, Malaysia in the Strait of Malacca and South China Sea, Papua New Guinea in the Pacific Ocean and Arafura Sea, and Australia in Timor Sea and Arafura Sea.

Indonesia ratified the 1982 United Nations Convention on the Law of the Sea (hereinafter UNCLOS) by Law No. 17 of 1985 on 31 December 1985 and it entered into force with respect to Indonesia on 3 February 1986.

Indonesia started its preparation to submit the extended Continental Shelf through the collection of existing bathymetric data resulting from the Digital Marine Resources Management Project (DMRM), ETOPO-2 and also global seismic or sediment thickness data since 1999.

2. Outer limit of the extended continental shelf in the area of North West of Sumatra

The present submission concerns only with the outer limit of the extended continental shelf in the area of North West of Sumatra. In accordance with paragraph 3 of Annex I of the Rules of Procedures, submissions of the outer limits of the extended continental shelf of Indonesia in other areas will be made at a later stage.

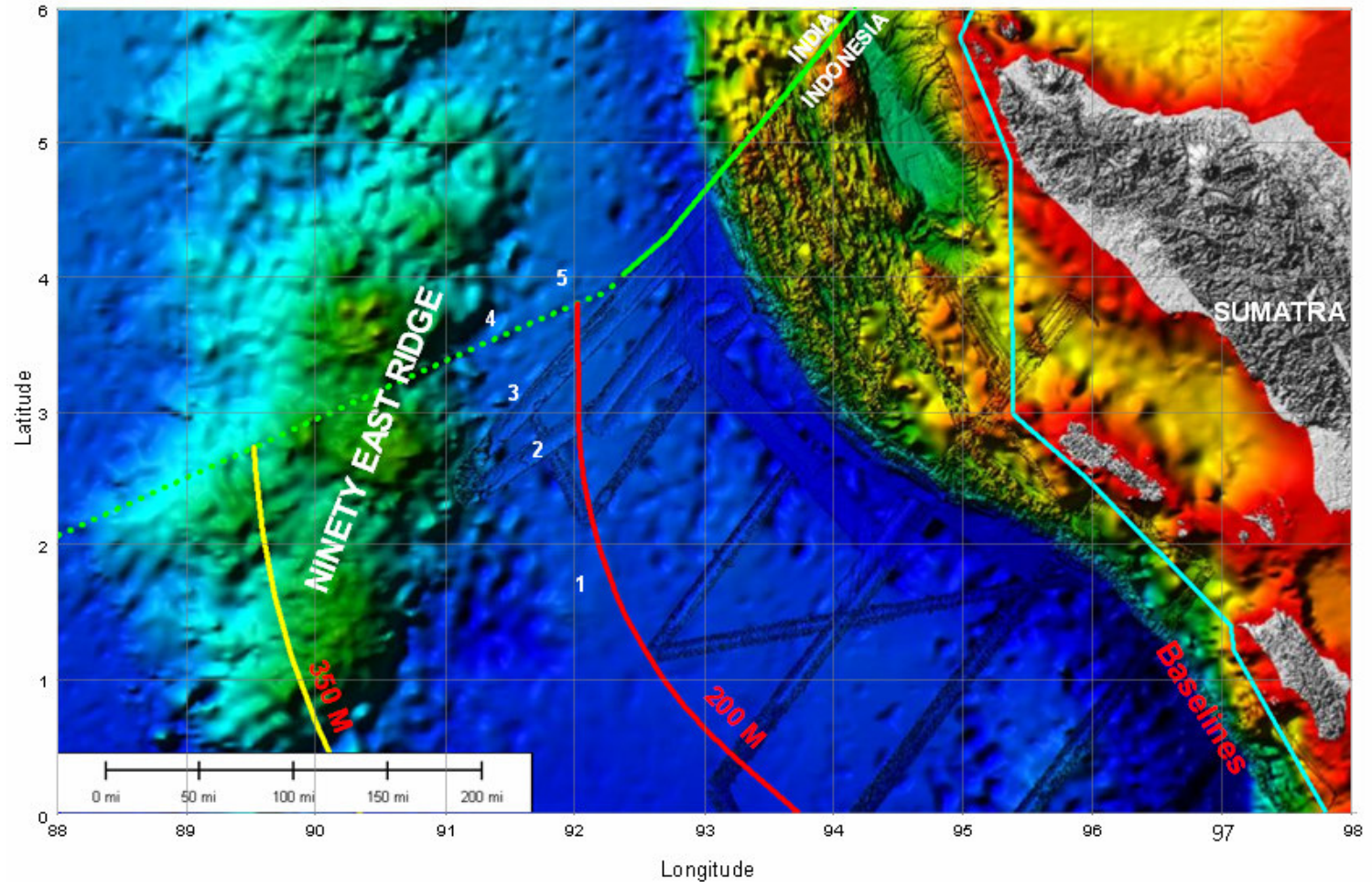


Figure 1. An overview of the area of extended continental shelf in respect of the area of North West of Sumatra

3. Specific provisions of Article 76 invoked to support this partial submission

The outer limits contained in this partial submission are based on the provisions of Article 76.1 and Article 76.4.a (i) UNCLOS.

4. Names of Commission Members who provided advice during the preparation of the partial submission

No member of the Commission on the Limits of the Continental Shelf assisted Indonesia in the preparation of this partial submission.

5. Absence of disputes

In accordance with paragraph 2 (a) of Annex of the Rules of Procedures, Indonesia wishes to inform the Commission that the area of continental shelf in North West of Sumatra that is the subject of this partial submission is not the subject to any dispute between Indonesia with any other state.

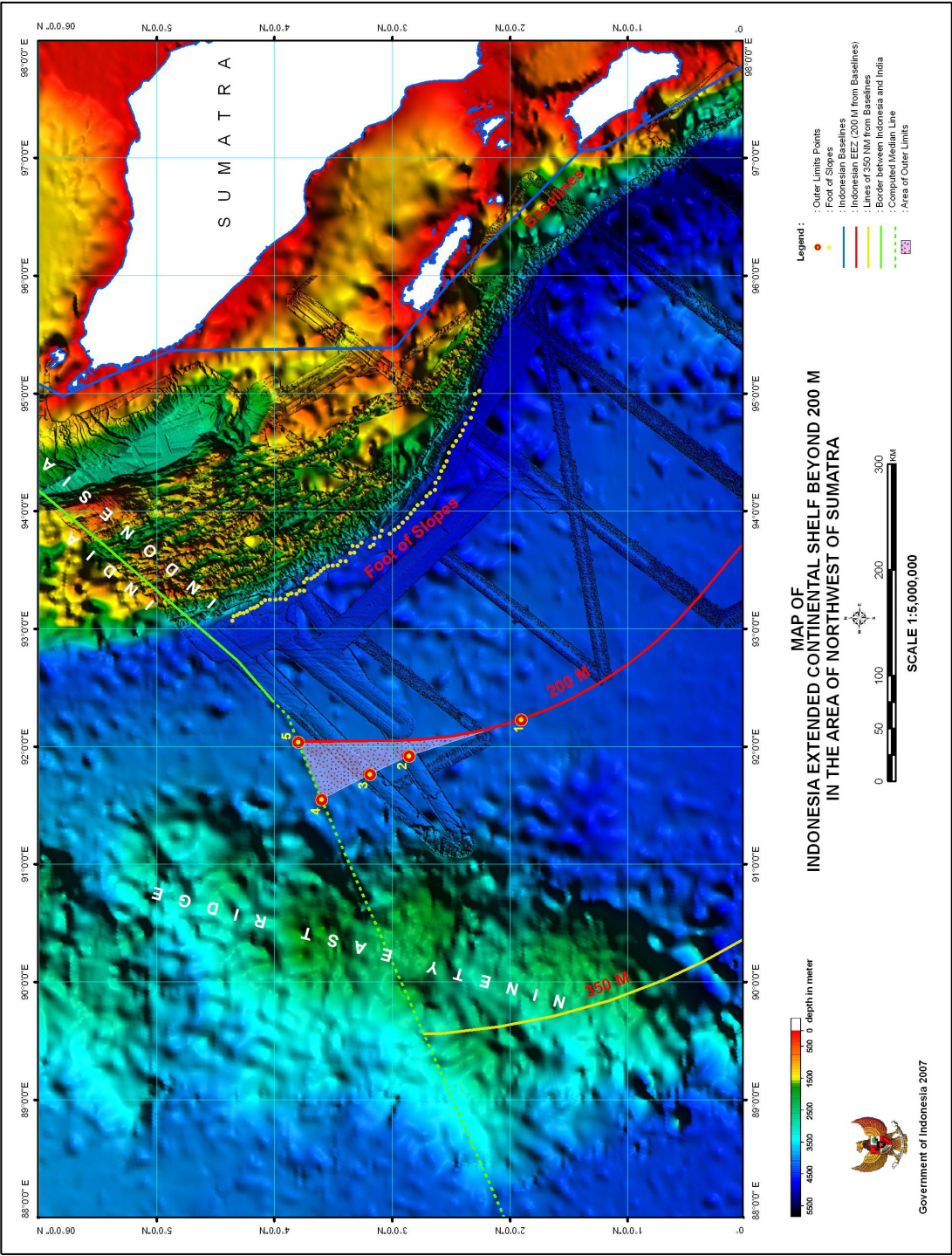


Figure 2. Details of the formula line used to define the outer limit of extended continental shelf in the area of North West of Sumatra

6. Detailed description of the outer limit of the extended continental shelf in the area of North West of Sumatra

Indonesia has established the lines determined by the 1% sediment thickness formula (the Gardiner or Irish formula) for the area under this partial submission. On the seismic data provided, sufficient sediment thickness has been demonstrated to allow the application of this formula of 1% sediment thickness with respect to the shortest distance to the foot of slope. Accordingly 5 fixed points have been established, which combined with 200 M limit, forming the outer limit of extended continental shelf in the area of North West of Sumatra (Figure 2). The coordinates of the fixed points and the lengths of the connecting straight lines are listed in Appendix 1.

7. State Bodies responsible for the preparation of the extended Continental Shelf Submission of Indonesia

This partial submission, together with all maps, figures, appendices and data bases were prepared jointly by an interagency team consisting of Department of Foreign Affairs, Department of Energy and Mineral Resources, National Coordinating Agency for Survey and Mapping, Agency for Assessment and Application of Technology, Indonesian Institute of Science, Agency for Marine and Fisheries Research and Hydro-Oceanographic Office. This interagency team is a national project dedicated to the establishment of the outer limits of the extended continental shelf of Indonesia funded by the Government of the Republic of Indonesia.

Appendix 1.1: List of coordinates defining the outer limits of extended continental shelf in the area of North West of Sumatra (All coordinates relate to the WGS 84 geodetic reference system)

FP	Latitude (°N)	Longitude (°E)	Method	From FP	To FP	Distance	
						m	M
1.	1.942284	92.21615	Fixed point on Indonesian 200M continental Shelf				
2.	2.857800	91.918861	1% Sediment Thickness	1	2	111,200	60.0
3.	3.189650	91.762839	1% Sediment Thickness	2	3	40,765	22.01
4.	3.603128	91.550536	Fixed point on the computed median line between Indonesia and India	3	4	51,660	27.90
5.	3.798494	92.039533	Fixed point on Indonesian 200M continental Shelf	4	5	58,450	31.56