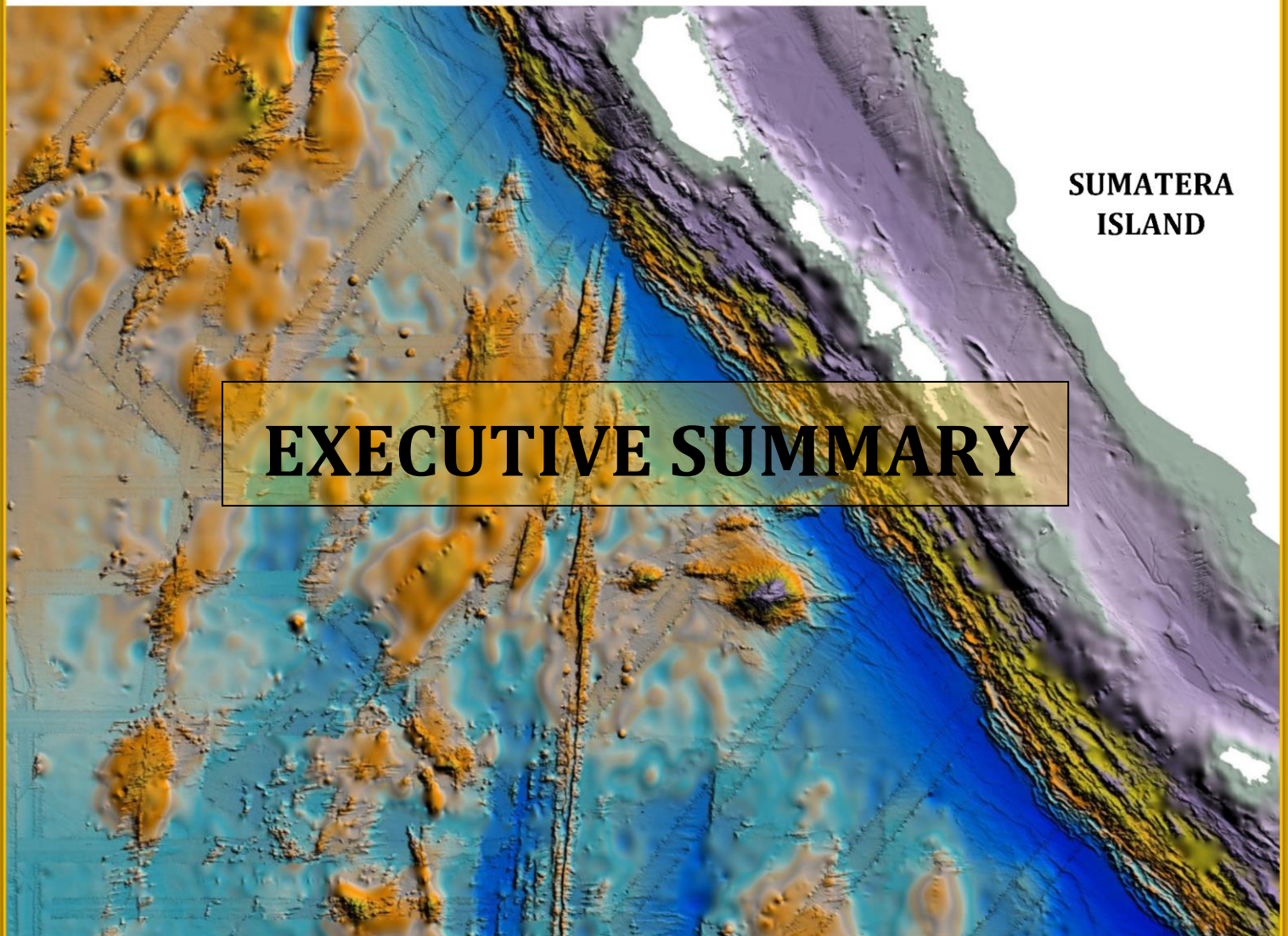




Continental Shelf Submission of The Republic of Indonesia

Partial Submission in respect of
the Area of Southwest of Sumatera



SUMATERA
ISLAND

EXECUTIVE SUMMARY

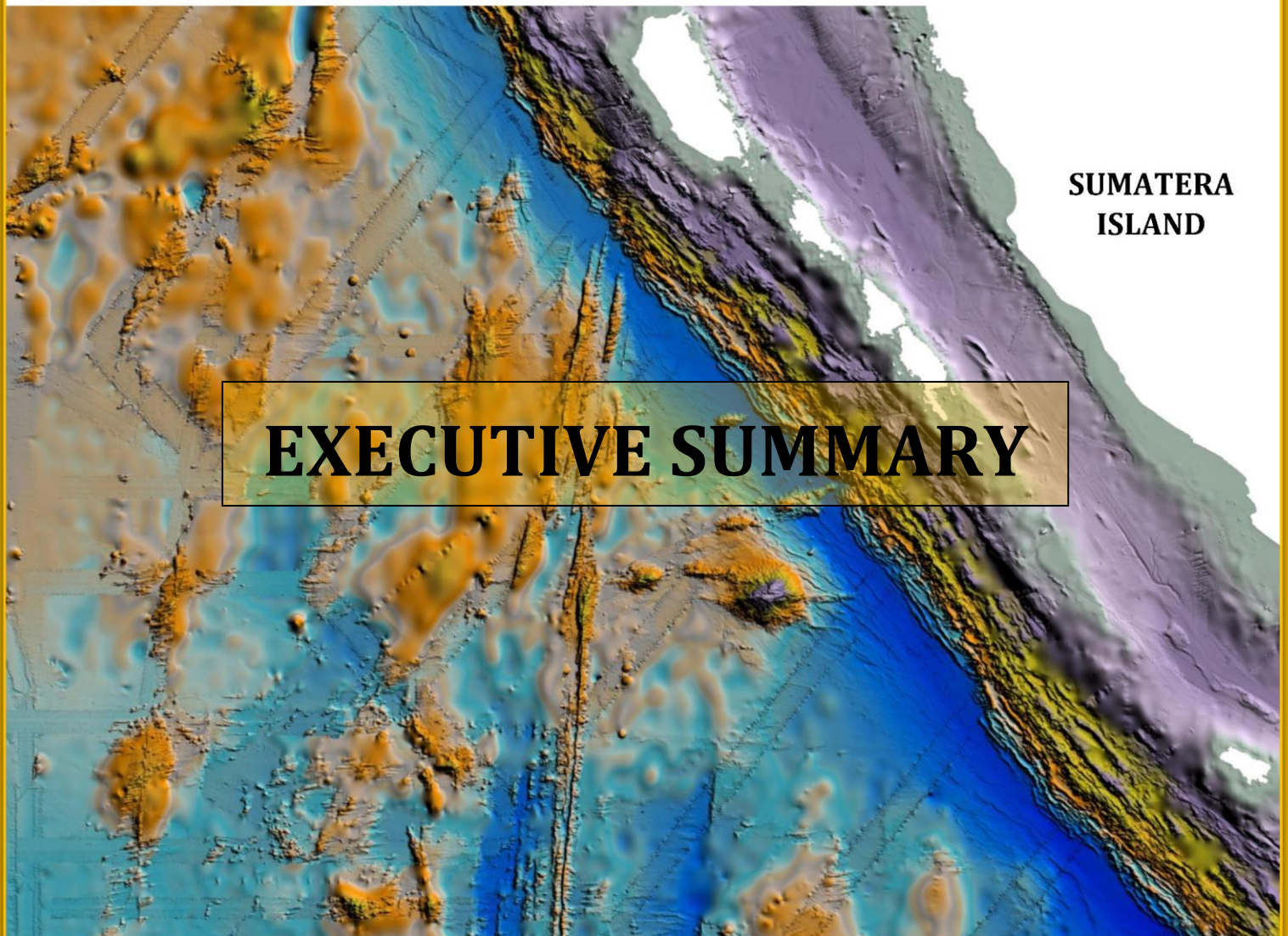
Government of the Republic of Indonesia
2020





Continental Shelf Submission of The Republic of Indonesia

Partial Submission in respect of
the Area of Southwest of Sumatera



SUMATERA
ISLAND

EXECUTIVE SUMMARY

Government of the Republic of Indonesia
2020



Continental Shelf Submission of the Republic of Indonesia

Partial Submission in respect of
the Area of Southwest of Sumatera

Executive Summary

**Government of the Republic of Indonesia
2020**

Table of Contents

| | | |
|----|--|---|
| 1. | Introduction | 3 |
| 2. | Outer Limit of The Continental Shelf in The Area of Southwest of Sumatera..... | 4 |
| 3. | Specific Provision of Article 76 Invoked to Support This Submission..... | 6 |
| 4. | Ministries and Institutions Involved for The Preparation of The Submission..... | 6 |
| 5. | Names of Commission Member Who Provided Advice During the Preparation of Partial Submission..... | 6 |
| 6. | Absence of Dispute | 7 |
| 7. | Detailed Description of The Outer Limit of Continental Shelf in The Area of The Southwest of Sumatera..... | 7 |
| | Appendix 1..... | 8 |

List of Figure

Figure 1. An Overview of the Area of Extended Continental Shelf in respect of the area of Southwest of Sumatera5

Appendix

Appendix 1: List of coordinates defining the outer limits of extended continental shelf in the area of southwest of Sumatera (All coordinates relate to the WGS 84 geodetic reference system).....8

1. Introduction

As a faithful party to the Convention, Indonesia establishes its maritime zones pursuant to the Convention and in accordance with its status as an archipelagic state. Indonesia, therefore, defines its continental shelf as comprising the seabed and subsoil that extend beyond its territorial sea throughout the natural prolongation of the outer edge of Indonesia's continental margin or to a distance of 200 nautical miles from Indonesia's archipelagic baseline from which the extend of Indonesia's territorial sea is measured.

Indonesia has submitted before the United Nations Commission on the Limit of the Continental Shelf (hereinafter: the Commission) the information on the limits of its continental shelf to fulfill its obligation as provided by article 76, paragraph 8 and article 4 of annex II of the Convention. Indonesia made subsequent partial submissions in 2008 and 2018, respectively concerning the information of the limits of Indonesia's continental shelf in the area of northwest of Sumatera and the information of the limits of Indonesia's Continental Shelf in the area of north of Papua. The 2008's submission received the Commission's recommendation in 2011 and gave Indonesia the right to establish 4.209 km² of seabed area in the northwest of Sumatera as part of Indonesia's continental shelf. The national team for the establishment of Indonesia's limits of continental shelf had also made its initial presentation concerning 2018 submission before the Commission in March 2020. The initial presentation was a kick-off to commence the process to which Indonesia's claim will be reviewed by the Commission.

This document is prepared to summarize the third partial submission of Indonesia concerning the limits of Indonesia's continental shelf in the southwest of Sumatera, especially in the Investigator Fracture Zone (IFZ) and Wharton Fossil Ridge (WFR) region. Indonesia presents this document as an integral part of its third partial submission that complements the first and the second partial submission. This partial submission shall not in any way exclude Indonesia's rights to inform the commission on the establishment of the outer limits of Indonesia's continental shelf in other areas. Accordingly, Indonesia will submit its fourth submissions in other areas in conformity with the Convention, the rules and procedures, as well as the technical and scientific guidelines of the Commission.

2. Outer Limit of The Continental Shelf in The Area of Southwest of Sumatera.

Indonesia affirms that Indonesia's continental margin in the southwest of Sumatera geomorphologically extends southwest of IFZ and WFR. The geological studies in the area and the underwater topographic profiles derived from Indonesia National Bathymetric Data confirm that these two submarine features of Wharton Basin are the natural prolongation of Indonesia landmass. The latest data utilized to update the INBD is data acquired from the Continental Shelf Survey at the IFZ and WFR conducted in second semester of 2020.

Indonesia has satisfied the appurtenance test and therefore has the right to delineate and establish the outer limit of Indonesia continental shelf in the southwest of Sumatera as depicted in figure 1.

The outer limit of the continental shelf beyond 200 M in this area is delineated in accordance with the rules and procedures provided in the Article 76 of UNCLOS 1982, the Scientific and Technical Guidelines of the Commission on the Limits of the Continental Shelf (CLCS/11) and Rules of Procedures of the Commission on the Limits of the Continental Shelf (CLCS/40/Rev.1).

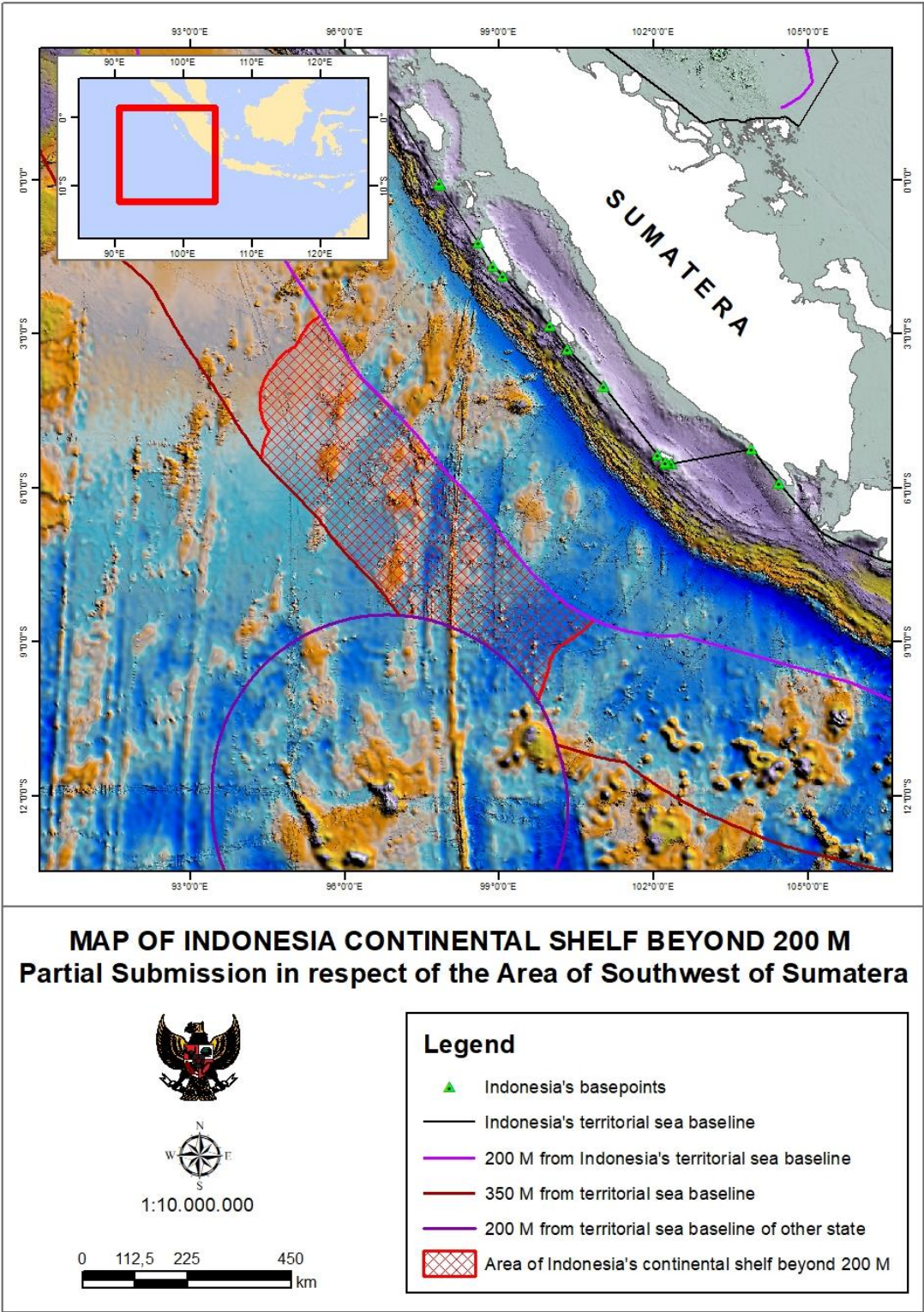


Figure 1. An Overview of the Area of Extended Continental Shelf in respect of the area of Southwest of Sumatera

3. Specific Provision of Article 76 Invoked to Support This Submission

The outer limits contained in this partial submission are based on the provision of Article 76 paragraph 1, paragraph 4 (a)(ii), paragraph 6, and paragraph 7 of UNCLOS 1982.

4. Ministries and Institutions Involved for The Preparation of The Submission

The main document on the limits of Indonesia continental shelf in the southwest of Sumatera including the maps, charts, geospatial database, as well as collection of other data utilized in this submission were carried out by Indonesia national team for the establishment of Indonesia's outer limit of continental shelf. The national team are comprised relevant ministries and institutions as follows:

- The Coordinating Ministry of Maritime Affairs and Investment
- Ministry of Foreign Affairs
- Ministry of Energy and Mineral Resources
- Ministry of Marine Affairs and Fisheries
- Ministry of Transportation
- Geospatial Information Agency
- Agency for the Assessment and Application of Technology
- Indonesian Institute of Sciences
- Indonesian Navy-Hydrographic and Oceanographic Centre

5. Names of Commission Member Who Provided Advice During the Preparation of Partial Submission

No member of the Commission on the Limits of the Continental Shelf assisted Indonesia in the preparation of this partial submission.

6. Absence of Dispute

Indonesia wishes to inform the Commission that the area of continental shelf in the southwest of Sumatera, that is the subject of this partial submission, is not subject to any dispute between Indonesia with any other state. Notwithstanding the fact, Indonesia requests the Commission to examine its submission concerning the area of southwest Sumatera without prejudice to the question of delimitation of the continental shelf with opposite or adjacent coastal states as mandated by Article 76 paragraph 10 of UNCLOS 1982.

7. Detailed Description of The Outer Limit of Continental Shelf in The Area of The Southwest of Sumatera.

Pursuant to the Convention, in particular set of rules provided by article 76 of the Convention as well as the scientific and technical guidelines of the Commission, Indonesia has delineated its outer limit of continental in the southwest of Sumatera by applying the Hedberg Formula.

Seventeen (17) points of Foot of Slope (FOS) have been identified at both sides IFZ and WFR resulting in the delineation of 1434 fixed points of the outer limit of Indonesia Continental Shelf beyond 200 M in the southwest of Sumatera. The outer limit has taken into consideration the following constraints namely:

- Maximum distance of 60 M between the two adjacent fixed points
- The 350 M projection line from Indonesian Archipelagic baseline,
- The projection of 200 M continental shelf of Cocos Island, Australia

The outer limit of the Indonesia continental shelf beyond 200 M in the southwest of Sumatera encloses an area of approximately **211.397,7 km sq.**

The coordinates of the fixed points and the lengths of the connecting straight lines are listed in Appendix 1.

Appendix 1

Table 1. List of coordinates defining the outer limits of Indonesia's continental shelf in the southwest of Papua

| Name | Latitude | Longitude | Remark |
|---------|------------------|-------------------|----------------|
| OCS 001 | 8° 28' 24,031" S | 97° 4' 10,284" E | 350M Indonesia |
| OCS 002 | 8° 24' 37,086" S | 97° 1' 13,804" E | 350M Indonesia |
| OCS 003 | 8° 20' 24,878" S | 96° 57' 57,654" E | 350M Indonesia |
| OCS 004 | 8° 16' 12,719" S | 96° 54' 41,518" E | 350M Indonesia |
| OCS 005 | 8° 12' 0,588" S | 96° 51' 25,376" E | 350M Indonesia |
| OCS 006 | 8° 7' 48,435" S | 96° 48' 9,193" E | 350M Indonesia |
| OCS 007 | 8° 3' 36,194" S | 96° 44' 52,917" E | 350M Indonesia |
| OCS 008 | 7° 59' 24,035" S | 96° 41' 36,678" E | 350M Indonesia |
| OCS 009 | 7° 55' 11,760" S | 96° 38' 20,324" E | 350M Indonesia |
| OCS 010 | 7° 52' 39,132" S | 96° 36' 21,514" E | 350M Indonesia |
| OCS 011 | 7° 51' 18,727" S | 96° 35' 4,232" E | 350M Indonesia |
| OCS 012 | 7° 47' 42,929" S | 96° 31' 36,800" E | 350M Indonesia |
| OCS 013 | 7° 44' 7,019" S | 96° 28' 9,242" E | 350M Indonesia |
| OCS 014 | 7° 40' 31,223" S | 96° 24' 41,778" E | 350M Indonesia |
| OCS 015 | 7° 36' 55,355" S | 96° 21' 14,228" E | 350M Indonesia |
| OCS 016 | 7° 33' 19,388" S | 96° 17' 46,566" E | 350M Indonesia |
| OCS 017 | 7° 29' 43,440" S | 96° 14' 18,905" E | 350M Indonesia |
| OCS 018 | 7° 26' 7,025" S | 96° 10' 50,779" E | 350M Indonesia |
| OCS 019 | 7° 25' 44,974" S | 96° 10' 29,637" E | 350M Indonesia |
| OCS 020 | 7° 23' 49,879" S | 96° 8' 39,614" E | 350M Indonesia |
| OCS 021 | 7° 23' 41,599" S | 96° 8' 31,708" E | 350M Indonesia |
| OCS 022 | 7° 21' 58,402" S | 96° 6' 53,287" E | 350M Indonesia |
| OCS 023 | 7° 20' 48,084" S | 96° 5' 46,843" E | 350M Indonesia |
| OCS 024 | 7° 16' 56,253" S | 96° 2' 9,823" E | 350M Indonesia |
| OCS 025 | 7° 14' 1,219" S | 95° 59' 29,664" E | 350M Indonesia |
| OCS 026 | 7° 13' 8,095" S | 95° 58' 42,147" E | 350M Indonesia |
| OCS 027 | 7° 10' 48,405" S | 95° 56' 39,414" E | 350M Indonesia |
| OCS 028 | 7° 5' 54,067" S | 95° 52' 25,426" E | 350M Indonesia |
| OCS 029 | 7° 3' 34,425" S | 95° 50' 27,053" E | 350M Indonesia |

| Name | Latitude | Longitude | Remark |
|-------------|------------------|-------------------|----------------|
| OCS 030 | 7° 0' 27,264" S | 95° 47' 54,788" E | 350M Indonesia |
| OCS 031 | 6° 55' 33,298" S | 95° 44' 1,225" E | 350M Indonesia |
| OCS 032 | 6° 53' 13,150" S | 95° 42' 11,810" E | 350M Indonesia |
| OCS 033 | 6° 52' 6,114" S | 95° 41' 20,383" E | 350M Indonesia |
| OCS 034 | 6° 48' 55,565" S | 95° 38' 57,610" E | 350M Indonesia |
| OCS 035 | 6° 45' 0,800" S | 95° 36' 5,842" E | 350M Indonesia |
| OCS 036 | 6° 43' 45,185" S | 95° 35' 11,038" E | 350M Indonesia |
| OCS 037 | 6° 41' 39,592" S | 95° 33' 40,864" E | 350M Indonesia |
| OCS 038 | 6° 40' 12,593" S | 95° 32' 38,045" E | 350M Indonesia |
| OCS 039 | 6° 39' 25,819" S | 95° 32' 4,467" E | 350M Indonesia |
| OCS 040 | 6° 35' 30,272" S | 95° 29' 16,365" E | 350M Indonesia |
| OCS 041 | 6° 35' 18,624" S | 95° 29' 8,052" E | 350M Indonesia |
| OCS 042 | 6° 33' 18,059" S | 95° 27' 14,218" E | 350M Indonesia |
| OCS 043 | 6° 29' 26,147" S | 95° 23' 35,234" E | 350M Indonesia |
| OCS 044 | 6° 25' 34,057" S | 95° 19' 56,063" E | 350M Indonesia |
| OCS 045 | 6° 21' 42,083" S | 95° 16' 16,981" E | 350M Indonesia |
| OCS 046 | 6° 17' 49,960" S | 95° 12' 37,741" E | 350M Indonesia |
| OCS 047 | 6° 13' 57,945" S | 95° 8' 58,583" E | 350M Indonesia |
| OCS 048 | 6° 10' 5,875" S | 95° 5' 19,354" E | 350M Indonesia |
| OCS 049 | 6° 6' 13,814" S | 95° 1' 40,114" E | 350M Indonesia |
| OCS 050 | 6° 2' 21,129" S | 94° 58' 0,265" E | 350M Indonesia |
| OCS 051 | 6° 1' 56,726" S | 94° 57' 37,336" E | 350M Indonesia |
| OCS 052 | 6° 0' 24,509" S | 94° 55' 59,533" E | 350M Indonesia |
| OCS 053 | 6° 0' 15,033" S | 94° 55' 49,497" E | 350M Indonesia |
| OCS 054 | 5° 58' 30,601" S | 94° 53' 59,044" E | 350M Indonesia |
| OCS 055 | 5° 57' 54,193" S | 94° 53' 20,731" E | 350M Indonesia |
| OCS 056 | 5° 56' 48,980" S | 94° 52' 12,455" E | 350M Indonesia |
| OCS 057 | 5° 55' 53,590" S | 94° 51' 14,904" E | 350M Indonesia |
| OCS 058 | 5° 52' 10,065" S | 94° 47' 24,443" E | 350M Indonesia |
| OCS 059 | 5° 50' 17,483" S | 94° 45' 30,139" E | 350M Indonesia |
| OCS 060 | 5° 49' 46,329" S | 94° 44' 58,988" E | 350M Indonesia |
| OCS 061 | 5° 47' 1,900" S | 94° 42' 18,141" E | 350M Indonesia |

| Name | Latitude | Longitude | Remark |
|-------------|------------------|-------------------|----------------------------|
| OCS 062 | 5° 43' 41,804" S | 94° 39' 6,661" E | 350M Indonesia |
| OCS 063 | 5° 41' 45,161" S | 94° 37' 16,742" E | 350M Indonesia |
| OCS 064 | 5° 39' 31,367" S | 94° 35' 12,579" E | 350M Indonesia |
| OCS 065 | 5° 36' 33,204" S | 94° 32' 31,006" E | 350M Indonesia |
| OCS 066 | 5° 34' 49,585" S | 94° 30' 59,178" E | 350M Indonesia |
| OCS 067 | 5° 33' 0,251" S | 94° 29' 23,629" E | 350M Indonesia |
| OCS 068 | 5° 28' 57,081" S | 94° 25' 54,081" E | 350M Indonesia |
| OCS 069 | 5° 26' 38,974" S | 94° 23' 57,136" E | 350M Indonesia |
| OCS 070 | 5° 24' 26,995" S | 94° 22' 9,779" E | 350M Indonesia / FOS + 60M |
| OCS 071 | 5° 23' 38,513" S | 94° 22' 20,709" E | FOS + 60M |
| OCS 072 | 5° 22' 4,718" S | 94° 22' 44,500" E | FOS + 60M |
| OCS 073 | 5° 21' 9,087" S | 94° 23' 0,201" E | FOS + 60M |
| OCS 074 | 5° 20' 49,226" S | 94° 23' 1,427" E | FOS + 60M |
| OCS 075 | 5° 19' 12,827" S | 94° 23' 9,964" E | FOS + 60M |
| OCS 076 | 5° 17' 36,691" S | 94° 23' 21,067" E | FOS + 60M |
| OCS 077 | 5° 16' 0,886" S | 94° 23' 34,729" E | FOS + 60M |
| OCS 078 | 5° 14' 25,482" S | 94° 23' 50,940" E | FOS + 60M |
| OCS 079 | 5° 12' 50,546" S | 94° 24' 9,687" E | FOS + 60M |
| OCS 080 | 5° 11' 16,146" S | 94° 24' 30,957" E | FOS + 60M |
| OCS 081 | 5° 9' 42,349" S | 94° 24' 54,734" E | FOS + 60M |
| OCS 082 | 5° 8' 9,222" S | 94° 25' 21,002" E | FOS + 60M |
| OCS 083 | 5° 6' 36,833" S | 94° 25' 49,741" E | FOS + 60M |
| OCS 084 | 5° 5' 5,246" S | 94° 26' 20,929" E | FOS + 60M |
| OCS 085 | 5° 3' 34,527" S | 94° 26' 54,546" E | FOS + 60M |
| OCS 086 | 5° 2' 4,741" S | 94° 27' 30,566" E | FOS + 60M |
| OCS 087 | 5° 0' 35,952" S | 94° 28' 8,964" E | FOS + 60M |
| OCS 088 | 4° 59' 8,224" S | 94° 28' 49,712" E | FOS + 60M |
| OCS 089 | 4° 57' 41,618" S | 94° 29' 32,780" E | FOS + 60M |
| OCS 090 | 4° 56' 16,196" S | 94° 30' 18,138" E | FOS + 60M |
| OCS 091 | 4° 54' 52,020" S | 94° 31' 5,753" E | FOS + 60M |
| OCS 092 | 4° 53' 30,894" S | 94° 31' 54,542" E | FOS + 60M |
| OCS 093 | 4° 52' 19,773" S | 94° 31' 5,288" E | FOS + 60M |

| Name | Latitude | Longitude | Remark |
|-------------|------------------|-------------------|---------------|
| OCS 094 | 4° 50' 58,840" S | 94° 30' 12,384" E | FOS + 60M |
| OCS 095 | 4° 49' 36,516" S | 94° 29' 21,659" E | FOS + 60M |
| OCS 096 | 4° 48' 12,860" S | 94° 28' 33,149" E | FOS + 60M |
| OCS 097 | 4° 46' 47,932" S | 94° 27' 46,888" E | FOS + 60M |
| OCS 098 | 4° 45' 21,794" S | 94° 27' 2,910" E | FOS + 60M |
| OCS 099 | 4° 43' 54,506" S | 94° 26' 21,246" E | FOS + 60M |
| OCS 100 | 4° 42' 26,131" S | 94° 25' 41,925" E | FOS + 60M |
| OCS 101 | 4° 40' 56,733" S | 94° 25' 4,976" E | FOS + 60M |
| OCS 102 | 4° 39' 26,375" S | 94° 24' 30,423" E | FOS + 60M |
| OCS 103 | 4° 37' 55,122" S | 94° 23' 58,293" E | FOS + 60M |
| OCS 104 | 4° 36' 23,040" S | 94° 23' 28,607" E | FOS + 60M |
| OCS 105 | 4° 34' 50,194" S | 94° 23' 1,387" E | FOS + 60M |
| OCS 106 | 4° 33' 16,651" S | 94° 22' 36,651" E | FOS + 60M |
| OCS 107 | 4° 31' 42,478" S | 94° 22' 14,418" E | FOS + 60M |
| OCS 108 | 4° 30' 7,741" S | 94° 21' 54,702" E | FOS + 60M |
| OCS 109 | 4° 28' 32,510" S | 94° 21' 37,518" E | FOS + 60M |
| OCS 110 | 4° 26' 56,851" S | 94° 21' 22,877" E | FOS + 60M |
| OCS 111 | 4° 25' 20,834" S | 94° 21' 10,791" E | FOS + 60M |
| OCS 112 | 4° 23' 44,526" S | 94° 21' 1,266" E | FOS + 60M |
| OCS 113 | 4° 22' 7,997" S | 94° 20' 54,310" E | FOS + 60M |
| OCS 114 | 4° 20' 31,316" S | 94° 20' 49,928" E | FOS + 60M |
| OCS 115 | 4° 18' 54,552" S | 94° 20' 48,121" E | FOS + 60M |
| OCS 116 | 4° 17' 17,774" S | 94° 20' 48,892" E | FOS + 60M |
| OCS 117 | 4° 15' 41,051" S | 94° 20' 52,240" E | FOS + 60M |
| OCS 118 | 4° 14' 4,453" S | 94° 20' 58,161" E | FOS + 60M |
| OCS 119 | 4° 12' 28,048" S | 94° 21' 6,651" E | FOS + 60M |
| OCS 120 | 4° 10' 51,905" S | 94° 21' 17,704" E | FOS + 60M |
| OCS 121 | 4° 9' 16,092" S | 94° 21' 31,313" E | FOS + 60M |
| OCS 122 | 4° 7' 40,679" S | 94° 21' 47,466" E | FOS + 60M |
| OCS 123 | 4° 6' 5,734" S | 94° 22' 6,152" E | FOS + 60M |
| OCS 124 | 4° 4' 31,324" S | 94° 22' 27,357" E | FOS + 60M |
| OCS 125 | 4° 2' 57,516" S | 94° 22' 51,066" E | FOS + 60M |

| Name | Latitude | Longitude | Remark |
|-------------|------------------|-------------------|---------------|
| OCS 126 | 4° 1' 24,378" S | 94° 23' 17,263" E | FOS + 60M |
| OCS 127 | 3° 59' 51,977" S | 94° 23' 45,927" E | FOS + 60M |
| OCS 128 | 3° 58' 20,377" S | 94° 24' 17,039" E | FOS + 60M |
| OCS 129 | 3° 56' 49,645" S | 94° 24' 50,576" E | FOS + 60M |
| OCS 130 | 3° 55' 19,845" S | 94° 25' 26,513" E | FOS + 60M |
| OCS 131 | 3° 53' 51,041" S | 94° 26' 4,825" E | FOS + 60M |
| OCS 132 | 3° 52' 23,297" S | 94° 26' 45,485" E | FOS + 60M |
| OCS 133 | 3° 50' 56,675" S | 94° 27' 28,463" E | FOS + 60M |
| OCS 134 | 3° 49' 31,238" S | 94° 28' 13,728" E | FOS + 60M |
| OCS 135 | 3° 48' 7,045" S | 94° 29' 1,248" E | FOS + 60M |
| OCS 136 | 3° 46' 44,158" S | 94° 29' 50,989" E | FOS + 60M |
| OCS 137 | 3° 45' 22,635" S | 94° 30' 42,915" E | FOS + 60M |
| OCS 138 | 3° 44' 2,534" S | 94° 31' 36,989" E | FOS + 60M |
| OCS 139 | 3° 42' 43,913" S | 94° 32' 33,172" E | FOS + 60M |
| OCS 140 | 3° 41' 26,827" S | 94° 33' 31,424" E | FOS + 60M |
| OCS 141 | 3° 40' 11,332" S | 94° 34' 31,704" E | FOS + 60M |
| OCS 142 | 3° 38' 57,482" S | 94° 35' 33,968" E | FOS + 60M |
| OCS 143 | 3° 37' 45,329" S | 94° 36' 38,172" E | FOS + 60M |
| OCS 144 | 3° 36' 51,964" S | 94° 37' 28,272" E | FOS + 60M |
| OCS 145 | 3° 35' 38,183" S | 94° 38' 15,254" E | FOS + 60M |
| OCS 146 | 3° 34' 18,080" S | 94° 39' 9,315" E | FOS + 60M |
| OCS 147 | 3° 32' 59,456" S | 94° 40' 5,485" E | FOS + 60M |
| OCS 148 | 3° 31' 42,368" S | 94° 41' 3,724" E | FOS + 60M |
| OCS 149 | 3° 30' 26,871" S | 94° 42' 3,990" E | FOS + 60M |
| OCS 150 | 3° 29' 13,018" S | 94° 43' 6,240" E | FOS + 60M |
| OCS 151 | 3° 28' 0,862" S | 94° 44' 10,430" E | FOS + 60M |
| OCS 152 | 3° 26' 50,455" S | 94° 45' 16,513" E | FOS + 60M |
| OCS 153 | 3° 25' 41,847" S | 94° 46' 24,443" E | FOS + 60M |
| OCS 154 | 3° 24' 35,086" S | 94° 47' 34,171" E | FOS + 60M |
| OCS 155 | 3° 23' 30,221" S | 94° 48' 45,647" E | FOS + 60M |
| OCS 156 | 3° 22' 27,297" S | 94° 49' 58,821" E | FOS + 60M |
| OCS 157 | 3° 21' 26,360" S | 94° 51' 13,639" E | FOS + 60M |

| Name | Latitude | Longitude | Remark |
|-------------|------------------|-------------------|---------------|
| OCS 158 | 3° 20' 27,452" S | 94° 52' 30,049" E | FOS + 60M |
| OCS 159 | 3° 19' 30,617" S | 94° 53' 47,995" E | FOS + 60M |
| OCS 160 | 3° 18' 35,894" S | 94° 55' 7,423" E | FOS + 60M |
| OCS 161 | 3° 17' 43,323" S | 94° 56' 28,276" E | FOS + 60M |
| OCS 162 | 3° 16' 52,940" S | 94° 57' 50,495" E | FOS + 60M |
| OCS 163 | 3° 16' 4,782" S | 94° 59' 14,023" E | FOS + 60M |
| OCS 164 | 3° 15' 18,884" S | 95° 0' 38,800" E | FOS + 60M |
| OCS 165 | 3° 14' 35,278" S | 95° 2' 4,765" E | FOS + 60M |
| OCS 166 | 3° 14' 32,382" S | 95° 2' 10,873" E | FOS + 60M |
| OCS 167 | 3° 14' 9,231" S | 95° 2' 23,928" E | FOS + 60M |
| OCS 168 | 3° 12' 46,335" S | 95° 3' 13,626" E | FOS + 60M |
| OCS 169 | 3° 11' 24,803" S | 95° 4' 5,510" E | FOS + 60M |
| OCS 170 | 3° 10' 4,694" S | 95° 4' 59,540" E | FOS + 60M |
| OCS 171 | 3° 8' 46,064" S | 95° 5' 55,679" E | FOS + 60M |
| OCS 172 | 3° 8' 23,414" S | 95° 6' 12,780" E | FOS + 60M |
| OCS 173 | 3° 8' 0,559" S | 95° 6' 21,912" E | FOS + 60M |
| OCS 174 | 3° 6' 31,746" S | 95° 7' 0,173" E | FOS + 60M |
| OCS 175 | 3° 5' 3,991" S | 95° 7' 40,780" E | FOS + 60M |
| OCS 176 | 3° 3' 37,359" S | 95° 8' 23,703" E | FOS + 60M |
| OCS 177 | 3° 2' 11,910" S | 95° 9' 8,913" E | FOS + 60M |
| OCS 178 | 3° 0' 47,706" S | 95° 9' 56,377" E | FOS + 60M |
| OCS 179 | 2° 59' 24,807" S | 95° 10' 46,060" E | FOS + 60M |
| OCS 180 | 2° 58' 3,272" S | 95° 11' 37,928" E | FOS + 60M |
| OCS 181 | 2° 56' 43,159" S | 95° 12' 31,943" E | FOS + 60M |
| OCS 182 | 2° 55' 24,526" S | 95° 13' 28,066" E | FOS + 60M |
| OCS 183 | 2° 54' 7,428" S | 95° 14' 26,258" E | FOS + 60M |
| OCS 184 | 2° 52' 51,921" S | 95° 15' 26,476" E | FOS + 60M |
| OCS 185 | 2° 51' 38,058" S | 95° 16' 28,678" E | FOS + 60M |
| OCS 186 | 2° 50' 25,892" S | 95° 17' 32,819" E | FOS + 60M |
| OCS 187 | 2° 49' 15,475" S | 95° 18' 38,853" E | FOS + 60M |
| OCS 188 | 2° 48' 6,856" S | 95° 19' 46,734" E | FOS + 60M |
| OCS 189 | 2° 47' 0,085" S | 95° 20' 56,412" E | FOS + 60M |

| Name | Latitude | Longitude | Remark |
|-------------|------------------|-------------------|----------------------------|
| OCS 190 | 2° 45' 55,210" S | 95° 22' 7,838" E | FOS + 60M |
| OCS 191 | 2° 44' 52,276" S | 95° 23' 20,961" E | FOS + 60M |
| OCS 192 | 2° 43' 51,329" S | 95° 24' 35,729" E | FOS + 60M |
| OCS 193 | 2° 42' 52,412" S | 95° 25' 52,087" E | FOS + 60M |
| OCS 194 | 2° 41' 55,568" S | 95° 27' 9,983" E | FOS + 60M |
| OCS 195 | 2° 41' 0,835" S | 95° 28' 29,360" E | FOS + 60M |
| OCS 196 | 2° 40' 8,255" S | 95° 29' 50,161" E | FOS + 60M |
| OCS 197 | 2° 39' 17,864" S | 95° 31' 12,329" E | FOS + 60M |
| OCS 198 | 2° 38' 38,647" S | 95° 32' 20,295" E | FOS + 60M / 200M Indonesia |
| OCS 199 | 3° 1' 27,634" S | 95° 47' 22,303" E | 200M Indonesia |
| OCS 200 | 3° 24' 53,168" S | 96° 1' 31,348" E | 200M Indonesia |
| OCS 201 | 3° 25' 8,042" S | 96° 1' 40,249" E | 200M Indonesia |
| OCS 202 | 3° 25' 13,977" S | 96° 1' 43,806" E | 200M Indonesia |
| OCS 203 | 3° 25' 24,729" S | 96° 1' 50,257" E | 200M Indonesia |
| OCS 204 | 3° 25' 30,704" S | 96° 1' 53,847" E | 200M Indonesia |
| OCS 205 | 3° 25' 50,625" S | 96° 2' 5,831" E | 200M Indonesia |
| OCS 206 | 3° 26' 0,100" S | 96° 2' 11,561" E | 200M Indonesia |
| OCS 207 | 3° 26' 4,915" S | 96° 2' 14,488" E | 200M Indonesia |
| OCS 208 | 3° 26' 20,265" S | 96° 2' 23,897" E | 200M Indonesia |
| OCS 209 | 3° 26' 30,452" S | 96° 2' 30,194" E | 200M Indonesia |
| OCS 210 | 3° 26' 36,438" S | 96° 2' 33,899" E | 200M Indonesia |
| OCS 211 | 3° 26' 55,512" S | 96° 2' 45,720" E | 200M Indonesia |
| OCS 212 | 3° 27' 14,272" S | 96° 2' 57,466" E | 200M Indonesia |
| OCS 213 | 3° 27' 16,277" S | 96° 2' 58,735" E | 200M Indonesia |
| OCS 214 | 3° 27' 54,363" S | 96° 3' 22,082" E | 200M Indonesia |
| OCS 215 | 3° 28' 3,968" S | 96° 3' 28,099" E | 200M Indonesia |
| OCS 216 | 3° 28' 8,764" S | 96° 3' 31,111" E | 200M Indonesia |
| OCS 217 | 3° 28' 47,140" S | 96° 3' 55,276" E | 200M Indonesia |
| OCS 218 | 3° 28' 51,929" S | 96° 3' 58,300" E | 200M Indonesia |
| OCS 219 | 3° 29' 1,505" S | 96° 4' 4,361" E | 200M Indonesia |
| OCS 220 | 3° 29' 6,288" S | 96° 4' 7,396" E | 200M Indonesia |
| OCS 221 | 3° 29' 25,416" S | 96° 4' 19,567" E | 200M Indonesia |

| Name | Latitude | Longitude | Remark |
|-------------|------------------|------------------|----------------|
| OCS 222 | 3° 29' 30,192" S | 96° 4' 22,614" E | 200M Indonesia |
| OCS 223 | 3° 29' 39,739" S | 96° 4' 28,721" E | 200M Indonesia |
| OCS 224 | 3° 29' 44,507" S | 96° 4' 31,778" E | 200M Indonesia |
| OCS 225 | 3° 30' 22,653" S | 96° 4' 56,302" E | 200M Indonesia |
| OCS 226 | 3° 30' 27,413" S | 96° 4' 59,371" E | 200M Indonesia |
| OCS 227 | 3° 30' 36,931" S | 96° 5' 5,522" E | 200M Indonesia |
| OCS 228 | 3° 30' 41,685" S | 96° 5' 8,602" E | 200M Indonesia |
| OCS 229 | 3° 31' 0,697" S | 96° 5' 20,952" E | 200M Indonesia |
| OCS 230 | 3° 31' 5,444" S | 96° 5' 24,044" E | 200M Indonesia |
| OCS 231 | 3° 31' 14,933" S | 96° 5' 30,239" E | 200M Indonesia |
| OCS 232 | 3° 31' 19,672" S | 96° 5' 33,341" E | 200M Indonesia |
| OCS 233 | 3° 31' 57,584" S | 96° 5' 58,223" E | 200M Indonesia |
| OCS 234 | 3° 32' 2,315" S | 96° 6' 1,335" E | 200M Indonesia |
| OCS 235 | 3° 32' 11,774" S | 96° 6' 7,575" E | 200M Indonesia |
| OCS 236 | 3° 32' 16,499" S | 96° 6' 10,700" E | 200M Indonesia |
| OCS 237 | 3° 32' 35,394" S | 96° 6' 23,228" E | 200M Indonesia |
| OCS 238 | 3° 32' 40,111" S | 96° 6' 26,364" E | 200M Indonesia |
| OCS 239 | 3° 32' 49,541" S | 96° 6' 32,649" E | 200M Indonesia |
| OCS 240 | 3° 32' 54,250" S | 96° 6' 35,795" E | 200M Indonesia |
| OCS 241 | 3° 33' 31,925" S | 96° 7' 1,031" E | 200M Indonesia |
| OCS 242 | 3° 33' 36,627" S | 96° 7' 4,189" E | 200M Indonesia |
| OCS 243 | 3° 33' 46,027" S | 96° 7' 10,517" E | 200M Indonesia |
| OCS 244 | 3° 33' 50,722" S | 96° 7' 13,686" E | 200M Indonesia |
| OCS 245 | 3° 34' 9,498" S | 96° 7' 26,391" E | 200M Indonesia |
| OCS 246 | 3° 34' 14,185" S | 96° 7' 29,571" E | 200M Indonesia |
| OCS 247 | 3° 34' 23,555" S | 96° 7' 35,944" E | 200M Indonesia |
| OCS 248 | 3° 34' 28,234" S | 96° 7' 39,134" E | 200M Indonesia |
| OCS 249 | 3° 35' 5,669" S | 96° 8' 4,723" E | 200M Indonesia |
| OCS 250 | 3° 35' 10,340" S | 96° 8' 7,924" E | 200M Indonesia |
| OCS 251 | 3° 35' 19,680" S | 96° 8' 14,341" E | 200M Indonesia |
| OCS 252 | 3° 35' 24,344" S | 96° 8' 17,553" E | 200M Indonesia |
| OCS 253 | 3° 35' 42,998" S | 96° 8' 30,434" E | 200M Indonesia |

| Name | Latitude | Longitude | Remark |
|-------------|------------------|-------------------|----------------|
| OCS 254 | 3° 35' 47,656" S | 96° 8' 33,658" E | 200M Indonesia |
| OCS 255 | 3° 35' 56,966" S | 96° 8' 40,119" E | 200M Indonesia |
| OCS 256 | 3° 36' 1,614" S | 96° 8' 43,353" E | 200M Indonesia |
| OCS 257 | 3° 36' 38,805" S | 96° 9' 9,292" E | 200M Indonesia |
| OCS 258 | 3° 36' 43,445" S | 96° 9' 12,537" E | 200M Indonesia |
| OCS 259 | 3° 36' 52,724" S | 96° 9' 19,041" E | 200M Indonesia |
| OCS 260 | 3° 36' 57,359" S | 96° 9' 22,298" E | 200M Indonesia |
| OCS 261 | 3° 37' 15,890" S | 96° 9' 35,353" E | 200M Indonesia |
| OCS 262 | 3° 37' 20,517" S | 96° 9' 38,620" E | 200M Indonesia |
| OCS 263 | 3° 37' 29,765" S | 96° 9' 45,168" E | 200M Indonesia |
| OCS 264 | 3° 37' 34,382" S | 96° 9' 48,445" E | 200M Indonesia |
| OCS 265 | 3° 38' 11,326" S | 96° 10' 14,733" E | 200M Indonesia |
| OCS 266 | 3° 38' 15,936" S | 96° 10' 18,021" E | 200M Indonesia |
| OCS 267 | 3° 38' 25,153" S | 96° 10' 24,612" E | 200M Indonesia |
| OCS 268 | 3° 38' 29,756" S | 96° 10' 27,912" E | 200M Indonesia |
| OCS 269 | 3° 38' 47,935" S | 96° 10' 41,489" E | 200M Indonesia |
| OCS 270 | 3° 38' 52,537" S | 96° 10' 44,784" E | 200M Indonesia |
| OCS 271 | 3° 38' 54,255" S | 96° 10' 45,978" E | 200M Indonesia |
| OCS 272 | 3° 39' 1,759" S | 96° 10' 51,347" E | 200M Indonesia |
| OCS 273 | 3° 39' 6,362" S | 96° 10' 54,644" E | 200M Indonesia |
| OCS 274 | 3° 39' 43,204" S | 96° 11' 21,069" E | 200M Indonesia |
| OCS 275 | 3° 39' 47,791" S | 96° 11' 24,388" E | 200M Indonesia |
| OCS 276 | 3° 39' 56,925" S | 96° 11' 31,093" E | 200M Indonesia |
| OCS 277 | 3° 40' 1,488" S | 96° 11' 34,447" E | 200M Indonesia |
| OCS 278 | 3° 40' 15,984" S | 96° 11' 45,115" E | 200M Indonesia |
| OCS 279 | 3° 40' 19,719" S | 96° 11' 47,912" E | 200M Indonesia |
| OCS 280 | 3° 40' 24,249" S | 96° 11' 51,310" E | 200M Indonesia |
| OCS 281 | 3° 40' 33,309" S | 96° 11' 58,112" E | 200M Indonesia |
| OCS 282 | 3° 40' 37,834" S | 96° 12' 1,514" E | 200M Indonesia |
| OCS 283 | 3° 40' 48,459" S | 96° 12' 9,559" E | 200M Indonesia |
| OCS 284 | 3° 41' 14,491" S | 96° 12' 28,207" E | 200M Indonesia |
| OCS 285 | 3° 41' 19,038" S | 96° 12' 31,582" E | 200M Indonesia |

| Name | Latitude | Longitude | Remark |
|-------------|------------------|-------------------|----------------|
| OCS 286 | 3° 41' 28,129" S | 96° 12' 38,345" E | 200M Indonesia |
| OCS 287 | 3° 41' 32,669" S | 96° 12' 41,730" E | 200M Indonesia |
| OCS 288 | 3° 41' 50,822" S | 96° 12' 55,303" E | 200M Indonesia |
| OCS 289 | 3° 41' 55,354" S | 96° 12' 58,699" E | 200M Indonesia |
| OCS 290 | 3° 42' 4,412" S | 96° 13' 5,504" E | 200M Indonesia |
| OCS 291 | 3° 42' 8,935" S | 96° 13' 8,910" E | 200M Indonesia |
| OCS 292 | 3° 42' 45,118" S | 96° 13' 36,228" E | 200M Indonesia |
| OCS 293 | 3° 42' 49,633" S | 96° 13' 39,646" E | 200M Indonesia |
| OCS 294 | 3° 42' 58,660" S | 96° 13' 46,494" E | 200M Indonesia |
| OCS 295 | 3° 43' 3,167" S | 96° 13' 49,922" E | 200M Indonesia |
| OCS 296 | 3° 43' 21,191" S | 96° 14' 3,664" E | 200M Indonesia |
| OCS 297 | 3° 43' 25,691" S | 96° 14' 7,103" E | 200M Indonesia |
| OCS 298 | 3° 43' 34,684" S | 96° 14' 13,993" E | 200M Indonesia |
| OCS 299 | 3° 43' 39,174" S | 96° 14' 17,441" E | 200M Indonesia |
| OCS 300 | 3° 44' 15,098" S | 96° 14' 45,098" E | 200M Indonesia |
| OCS 301 | 3° 44' 19,579" S | 96° 14' 48,557" E | 200M Indonesia |
| OCS 302 | 3° 44' 28,540" S | 96° 14' 55,490" E | 200M Indonesia |
| OCS 303 | 3° 44' 33,016" S | 96° 14' 58,960" E | 200M Indonesia |
| OCS 304 | 3° 44' 50,910" S | 96° 15' 12,871" E | 200M Indonesia |
| OCS 305 | 3° 44' 55,376" S | 96° 15' 16,352" E | 200M Indonesia |
| OCS 306 | 3° 45' 4,304" S | 96° 15' 23,327" E | 200M Indonesia |
| OCS 307 | 3° 45' 8,762" S | 96° 15' 26,817" E | 200M Indonesia |
| OCS 308 | 3° 45' 44,422" S | 96° 15' 54,811" E | 200M Indonesia |
| OCS 309 | 3° 45' 51,165" S | 96° 16' 0,124" E | 200M Indonesia |
| OCS 310 | 3° 46' 4,638" S | 96° 16' 10,778" E | 200M Indonesia |
| OCS 311 | 3° 46' 11,363" S | 96° 16' 16,115" E | 200M Indonesia |
| OCS 312 | 3° 46' 38,237" S | 96° 16' 37,523" E | 200M Indonesia |
| OCS 313 | 3° 46' 44,942" S | 96° 16' 42,884" E | 200M Indonesia |
| OCS 314 | 3° 46' 58,336" S | 96° 16' 53,633" E | 200M Indonesia |
| OCS 315 | 3° 47' 5,021" S | 96° 16' 59,016" E | 200M Indonesia |
| OCS 316 | 3° 47' 58,463" S | 96° 17' 42,216" E | 200M Indonesia |
| OCS 317 | 3° 48' 5,297" S | 96° 17' 47,761" E | 200M Indonesia |

| Name | Latitude | Longitude | Remark |
|-------------|------------------|-------------------|----------------|
| OCS 318 | 3° 48' 18,950" S | 96° 17' 58,881" E | 200M Indonesia |
| OCS 319 | 3° 48' 25,765" S | 96° 18' 4,452" E | 200M Indonesia |
| OCS 320 | 3° 48' 52,998" S | 96° 18' 26,797" E | 200M Indonesia |
| OCS 321 | 3° 49' 0,191" S | 96° 18' 32,722" E | 200M Indonesia |
| OCS 322 | 3° 49' 14,556" S | 96° 18' 44,603" E | 200M Indonesia |
| OCS 323 | 3° 49' 22,445" S | 96° 18' 51,156" E | 200M Indonesia |
| OCS 324 | 3° 49' 24,178" S | 96° 18' 52,602" E | 200M Indonesia |
| OCS 325 | 3° 49' 29,582" S | 96° 18' 57,114" E | 200M Indonesia |
| OCS 326 | 3° 49' 32,910" S | 96° 18' 59,895" E | 200M Indonesia |
| OCS 327 | 3° 49' 44,300" S | 96° 19' 9,428" E | 200M Indonesia |
| OCS 328 | 3° 49' 48,116" S | 96° 19' 12,626" E | 200M Indonesia |
| OCS 329 | 3° 49' 54,474" S | 96° 19' 17,962" E | 200M Indonesia |
| OCS 330 | 3° 49' 58,275" S | 96° 19' 21,157" E | 200M Indonesia |
| OCS 331 | 3° 51' 29,717" S | 96° 20' 38,119" E | 200M Indonesia |
| OCS 332 | 3° 51' 38,872" S | 96° 20' 45,864" E | 200M Indonesia |
| OCS 333 | 3° 51' 57,155" S | 96° 21' 1,408" E | 200M Indonesia |
| OCS 334 | 3° 52' 6,274" S | 96° 21' 9,201" E | 200M Indonesia |
| OCS 335 | 3° 52' 42,695" S | 96° 21' 40,482" E | 200M Indonesia |
| OCS 336 | 3° 52' 51,776" S | 96° 21' 48,321" E | 200M Indonesia |
| OCS 337 | 3° 53' 9,903" S | 96° 22' 4,048" E | 200M Indonesia |
| OCS 338 | 3° 53' 18,942" S | 96° 22' 11,929" E | 200M Indonesia |
| OCS 339 | 3° 54' 31,162" S | 96° 23' 15,221" E | 200M Indonesia |
| OCS 340 | 3° 54' 40,163" S | 96° 23' 23,148" E | 200M Indonesia |
| OCS 341 | 3° 54' 58,132" S | 96° 23' 39,056" E | 200M Indonesia |
| OCS 342 | 3° 55' 7,095" S | 96° 23' 47,030" E | 200M Indonesia |
| OCS 343 | 3° 55' 42,884" S | 96° 24' 19,032" E | 200M Indonesia |
| OCS 344 | 3° 55' 51,807" S | 96° 24' 27,051" E | 200M Indonesia |
| OCS 345 | 3° 56' 9,618" S | 96° 24' 43,138" E | 200M Indonesia |
| OCS 346 | 3° 56' 18,499" S | 96° 24' 51,200" E | 200M Indonesia |
| OCS 347 | 3° 57' 12,697" S | 96° 25' 40,646" E | 200M Indonesia |
| OCS 348 | 3° 57' 19,453" S | 96° 25' 46,834" E | 200M Indonesia |
| OCS 349 | 3° 57' 32,950" S | 96° 25' 59,243" E | 200M Indonesia |

| Name | Latitude | Longitude | Remark |
|-------------|------------------|-------------------|----------------|
| OCS 350 | 3° 57' 39,685" S | 96° 26' 5,458" E | 200M Indonesia |
| OCS 351 | 3° 58' 6,591" S | 96° 26' 30,384" E | 200M Indonesia |
| OCS 352 | 3° 58' 13,302" S | 96° 26' 36,625" E | 200M Indonesia |
| OCS 353 | 3° 58' 26,704" S | 96° 26' 49,136" E | 200M Indonesia |
| OCS 354 | 3° 58' 33,389" S | 96° 26' 55,401" E | 200M Indonesia |
| OCS 355 | 3° 59' 26,823" S | 96° 27' 45,666" E | 200M Indonesia |
| OCS 356 | 3° 59' 33,484" S | 96° 27' 51,957" E | 200M Indonesia |
| OCS 357 | 3° 59' 46,790" S | 96° 28' 4,569" E | 200M Indonesia |
| OCS 358 | 3° 59' 53,429" S | 96° 28' 10,886" E | 200M Indonesia |
| OCS 359 | 4° 0' 19,950" S | 96° 28' 36,219" E | 200M Indonesia |
| OCS 360 | 4° 0' 26,564" S | 96° 28' 42,561" E | 200M Indonesia |
| OCS 361 | 4° 0' 39,772" S | 96° 28' 55,275" E | 200M Indonesia |
| OCS 362 | 4° 0' 46,361" S | 96° 29' 1,641" E | 200M Indonesia |
| OCS 363 | 4° 1' 39,019" S | 96° 29' 52,714" E | 200M Indonesia |
| OCS 364 | 4° 1' 45,583" S | 96° 29' 59,105" E | 200M Indonesia |
| OCS 365 | 4° 1' 58,694" S | 96° 30' 11,919" E | 200M Indonesia |
| OCS 366 | 4° 2' 5,235" S | 96° 30' 18,336" E | 200M Indonesia |
| OCS 367 | 4° 2' 31,365" S | 96° 30' 44,070" E | 200M Indonesia |
| OCS 368 | 4° 2' 37,881" S | 96° 30' 50,512" E | 200M Indonesia |
| OCS 369 | 4° 2' 50,894" S | 96° 31' 3,425" E | 200M Indonesia |
| OCS 370 | 4° 2' 57,384" S | 96° 31' 9,891" E | 200M Indonesia |
| OCS 371 | 4° 3' 49,253" S | 96° 32' 1,760" E | 200M Indonesia |
| OCS 372 | 4° 3' 55,719" S | 96° 32' 8,251" E | 200M Indonesia |
| OCS 373 | 4° 4' 8,632" S | 96° 32' 21,262" E | 200M Indonesia |
| OCS 374 | 4° 4' 15,073" S | 96° 32' 27,779" E | 200M Indonesia |
| OCS 375 | 4° 4' 40,806" S | 96° 32' 53,907" E | 200M Indonesia |
| OCS 376 | 4° 4' 47,223" S | 96° 33' 0,449" E | 200M Indonesia |
| OCS 377 | 4° 5' 0,036" S | 96° 33' 13,558" E | 200M Indonesia |
| OCS 378 | 4° 5' 6,426" S | 96° 33' 20,122" E | 200M Indonesia |
| OCS 379 | 4° 5' 57,495" S | 96° 34' 12,775" E | 200M Indonesia |
| OCS 380 | 4° 6' 0,674" S | 96° 34' 16,058" E | 200M Indonesia |
| OCS 381 | 4° 6' 7,031" S | 96° 34' 22,638" E | 200M Indonesia |

| Name | Latitude | Longitude | Remark |
|-------------|------------------|-------------------|----------------|
| OCS 382 | 4° 6' 10,206" S | 96° 34' 25,930" E | 200M Indonesia |
| OCS 383 | 4° 6' 22,902" S | 96° 34' 39,121" E | 200M Indonesia |
| OCS 384 | 4° 6' 26,071" S | 96° 34' 42,420" E | 200M Indonesia |
| OCS 385 | 4° 6' 32,406" S | 96° 34' 49,026" E | 200M Indonesia |
| OCS 386 | 4° 6' 35,568" S | 96° 34' 52,330" E | 200M Indonesia |
| OCS 387 | 4° 7' 0,866" S | 96° 35' 18,815" E | 200M Indonesia |
| OCS 388 | 4° 7' 4,016" S | 96° 35' 22,119" E | 200M Indonesia |
| OCS 389 | 4° 7' 10,312" S | 96° 35' 28,736" E | 200M Indonesia |
| OCS 390 | 4° 7' 13,456" S | 96° 35' 32,046" E | 200M Indonesia |
| OCS 391 | 4° 7' 26,026" S | 96° 35' 45,306" E | 200M Indonesia |
| OCS 392 | 4° 7' 29,153" S | 96° 35' 48,611" E | 200M Indonesia |
| OCS 393 | 4° 7' 35,403" S | 96° 35' 55,230" E | 200M Indonesia |
| OCS 394 | 4° 7' 38,508" S | 96° 35' 58,524" E | 200M Indonesia |
| OCS 395 | 4° 14' 57,158" S | 96° 43' 44,884" E | 200M Indonesia |
| OCS 396 | 4° 59' 4,445" S | 97° 25' 33,019" E | 200M Indonesia |
| OCS 397 | 5° 15' 33,654" S | 97° 37' 22,636" E | 200M Indonesia |
| OCS 398 | 5° 15' 35,761" S | 97° 37' 24,150" E | 200M Indonesia |
| OCS 399 | 5° 15' 40,021" S | 97° 37' 27,215" E | 200M Indonesia |
| OCS 400 | 5° 15' 42,151" S | 97° 37' 28,749" E | 200M Indonesia |
| OCS 401 | 5° 15' 50,742" S | 97° 37' 34,943" E | 200M Indonesia |
| OCS 402 | 5° 15' 52,888" S | 97° 37' 36,492" E | 200M Indonesia |
| OCS 403 | 5° 15' 57,178" S | 97° 37' 39,593" E | 200M Indonesia |
| OCS 404 | 5° 15' 59,321" S | 97° 37' 41,144" E | 200M Indonesia |
| OCS 405 | 5° 16' 16,581" S | 97° 37' 53,646" E | 200M Indonesia |
| OCS 406 | 5° 16' 18,735" S | 97° 37' 55,209" E | 200M Indonesia |
| OCS 407 | 5° 16' 23,045" S | 97° 37' 58,338" E | 200M Indonesia |
| OCS 408 | 5° 16' 25,198" S | 97° 37' 59,903" E | 200M Indonesia |
| OCS 409 | 5° 16' 33,812" S | 97° 38' 6,172" E | 200M Indonesia |
| OCS 410 | 5° 16' 35,964" S | 97° 38' 7,740" E | 200M Indonesia |
| OCS 411 | 5° 16' 40,265" S | 97° 38' 10,877" E | 200M Indonesia |
| OCS 412 | 5° 16' 42,411" S | 97° 38' 12,444" E | 200M Indonesia |
| OCS 413 | 5° 17' 16,953" S | 97° 38' 37,701" E | 200M Indonesia |

| Name | Latitude | Longitude | Remark |
|-------------|------------------|-------------------|----------------|
| OCS 414 | 5° 17' 21,263" S | 97° 38' 40,860" E | 200M Indonesia |
| OCS 415 | 5° 17' 29,882" S | 97° 38' 47,191" E | 200M Indonesia |
| OCS 416 | 5° 17' 34,187" S | 97° 38' 50,361" E | 200M Indonesia |
| OCS 417 | 5° 17' 51,400" S | 97° 39' 3,064" E | 200M Indonesia |
| OCS 418 | 5° 17' 55,696" S | 97° 39' 6,243" E | 200M Indonesia |
| OCS 419 | 5° 18' 4,286" S | 97° 39' 12,612" E | 200M Indonesia |
| OCS 420 | 5° 18' 8,575" S | 97° 39' 15,799" E | 200M Indonesia |
| OCS 421 | 5° 18' 42,891" S | 97° 39' 41,362" E | 200M Indonesia |
| OCS 422 | 5° 18' 47,173" S | 97° 39' 44,559" E | 200M Indonesia |
| OCS 423 | 5° 18' 55,734" S | 97° 39' 50,966" E | 200M Indonesia |
| OCS 424 | 5° 19' 0,011" S | 97° 39' 54,174" E | 200M Indonesia |
| OCS 425 | 5° 19' 17,109" S | 97° 40' 7,030" E | 200M Indonesia |
| OCS 426 | 5° 19' 21,378" S | 97° 40' 10,247" E | 200M Indonesia |
| OCS 427 | 5° 19' 29,911" S | 97° 40' 16,692" E | 200M Indonesia |
| OCS 428 | 5° 19' 34,171" S | 97° 40' 19,918" E | 200M Indonesia |
| OCS 429 | 5° 20' 8,258" S | 97° 40' 45,785" E | 200M Indonesia |
| OCS 430 | 5° 20' 12,511" S | 97° 40' 49,020" E | 200M Indonesia |
| OCS 431 | 5° 20' 21,015" S | 97° 40' 55,503" E | 200M Indonesia |
| OCS 432 | 5° 20' 25,263" S | 97° 40' 58,749" E | 200M Indonesia |
| OCS 433 | 5° 20' 42,246" S | 97° 41' 11,757" E | 200M Indonesia |
| OCS 434 | 5° 20' 46,487" S | 97° 41' 15,012" E | 200M Indonesia |
| OCS 435 | 5° 20' 54,962" S | 97° 41' 21,533" E | 200M Indonesia |
| OCS 436 | 5° 20' 59,193" S | 97° 41' 24,796" E | 200M Indonesia |
| OCS 437 | 5° 21' 33,048" S | 97° 41' 50,966" E | 200M Indonesia |
| OCS 438 | 5° 21' 37,273" S | 97° 41' 54,239" E | 200M Indonesia |
| OCS 439 | 5° 21' 45,719" S | 97° 42' 0,797" E | 200M Indonesia |
| OCS 440 | 5° 21' 49,937" S | 97° 42' 4,081" E | 200M Indonesia |
| OCS 441 | 5° 22' 6,804" S | 97° 42' 17,239" E | 200M Indonesia |
| OCS 442 | 5° 22' 11,014" S | 97° 42' 20,531" E | 200M Indonesia |
| OCS 443 | 5° 22' 19,431" S | 97° 42' 27,127" E | 200M Indonesia |
| OCS 444 | 5° 22' 23,634" S | 97° 42' 30,429" E | 200M Indonesia |
| OCS 445 | 5° 22' 57,254" S | 97° 42' 56,899" E | 200M Indonesia |

| Name | Latitude | Longitude | Remark |
|-------------|------------------|-------------------|----------------|
| OCS 446 | 5° 23' 1,449" S | 97° 43' 0,209" E | 200M Indonesia |
| OCS 447 | 5° 23' 9,836" S | 97° 43' 6,842" E | 200M Indonesia |
| OCS 448 | 5° 23' 14,024" S | 97° 43' 10,163" E | 200M Indonesia |
| OCS 449 | 5° 23' 30,773" S | 97° 43' 23,470" E | 200M Indonesia |
| OCS 450 | 5° 23' 34,955" S | 97° 43' 26,801" E | 200M Indonesia |
| OCS 451 | 5° 23' 43,313" S | 97° 43' 33,471" E | 200M Indonesia |
| OCS 452 | 5° 23' 47,485" S | 97° 43' 36,809" E | 200M Indonesia |
| OCS 453 | 5° 24' 20,868" S | 97° 44' 3,577" E | 200M Indonesia |
| OCS 454 | 5° 24' 25,033" S | 97° 44' 6,925" E | 200M Indonesia |
| OCS 455 | 5° 24' 33,361" S | 97° 44' 13,633" E | 200M Indonesia |
| OCS 456 | 5° 24' 37,521" S | 97° 44' 16,991" E | 200M Indonesia |
| OCS 457 | 5° 24' 54,150" S | 97° 44' 30,447" E | 200M Indonesia |
| OCS 458 | 5° 25' 1,759" S | 97° 44' 36,629" E | 200M Indonesia |
| OCS 459 | 5° 25' 16,952" S | 97° 44' 49,026" E | 200M Indonesia |
| OCS 460 | 5° 25' 24,535" S | 97° 44' 55,240" E | 200M Indonesia |
| OCS 461 | 5° 25' 47,833" S | 97° 45' 14,409" E | 200M Indonesia |
| OCS 462 | 5° 25' 49,260" S | 97° 45' 15,577" E | 200M Indonesia |
| OCS 463 | 5° 25' 58,927" S | 97° 45' 23,496" E | 200M Indonesia |
| OCS 464 | 5° 26' 17,506" S | 97° 45' 38,725" E | 200M Indonesia |
| OCS 465 | 5° 26' 27,930" S | 97° 45' 47,274" E | 200M Indonesia |
| OCS 466 | 5° 26' 35,940" S | 97° 45' 53,872" E | 200M Indonesia |
| OCS 467 | 5° 26' 51,918" S | 97° 46' 7,092" E | 200M Indonesia |
| OCS 468 | 5° 27' 1,278" S | 97° 46' 14,876" E | 200M Indonesia |
| OCS 469 | 5° 27' 6,390" S | 97° 46' 19,161" E | 200M Indonesia |
| OCS 470 | 5° 27' 19,364" S | 97° 46' 30,068" E | 200M Indonesia |
| OCS 471 | 5° 27' 25,842" S | 97° 46' 35,533" E | 200M Indonesia |
| OCS 472 | 5° 27' 32,649" S | 97° 46' 41,296" E | 200M Indonesia |
| OCS 473 | 5° 27' 48,717" S | 97° 46' 54,902" E | 200M Indonesia |
| OCS 474 | 5° 27' 57,580" S | 97° 47' 2,408" E | 200M Indonesia |
| OCS 475 | 5° 28' 7,917" S | 97° 47' 11,170" E | 200M Indonesia |
| OCS 476 | 5° 28' 14,224" S | 97° 47' 16,534" E | 200M Indonesia |
| OCS 477 | 5° 28' 26,794" S | 97° 47' 27,264" E | 200M Indonesia |

| Name | Latitude | Longitude | Remark |
|-------------|------------------|-------------------|----------------|
| OCS 478 | 5° 28' 33,069" S | 97° 47' 32,638" E | 200M Indonesia |
| OCS 479 | 5° 28' 56,977" S | 97° 47' 53,187" E | 200M Indonesia |
| OCS 480 | 5° 29' 3,974" S | 97° 47' 59,247" E | 200M Indonesia |
| OCS 481 | 5° 29' 12,705" S | 97° 48' 6,618" E | 200M Indonesia |
| OCS 482 | 5° 29' 51,939" S | 97° 48' 40,063" E | 200M Indonesia |
| OCS 483 | 5° 30' 11,469" S | 97° 48' 56,893" E | 200M Indonesia |
| OCS 484 | 5° 30' 28,100" S | 97° 49' 11,381" E | 200M Indonesia |
| OCS 485 | 5° 30' 32,252" S | 97° 49' 15,006" E | 200M Indonesia |
| OCS 486 | 5° 30' 40,549" S | 97° 49' 22,268" E | 200M Indonesia |
| OCS 487 | 5° 30' 44,691" S | 97° 49' 25,901" E | 200M Indonesia |
| OCS 488 | 5° 31' 17,824" S | 97° 49' 55,034" E | 200M Indonesia |
| OCS 489 | 5° 31' 21,958" S | 97° 49' 58,676" E | 200M Indonesia |
| OCS 490 | 5° 31' 30,221" S | 97° 50' 5,976" E | 200M Indonesia |
| OCS 491 | 5° 31' 34,347" S | 97° 50' 9,629" E | 200M Indonesia |
| OCS 492 | 5° 31' 50,844" S | 97° 50' 24,269" E | 200M Indonesia |
| OCS 493 | 5° 31' 54,963" S | 97° 50' 27,933" E | 200M Indonesia |
| OCS 494 | 5° 32' 3,193" S | 97° 50' 35,270" E | 200M Indonesia |
| OCS 495 | 5° 32' 7,302" S | 97° 50' 38,941" E | 200M Indonesia |
| OCS 496 | 5° 32' 40,166" S | 97° 51' 8,377" E | 200M Indonesia |
| OCS 497 | 5° 32' 44,265" S | 97° 51' 12,058" E | 200M Indonesia |
| OCS 498 | 5° 32' 52,461" S | 97° 51' 19,432" E | 200M Indonesia |
| OCS 499 | 5° 32' 56,553" S | 97° 51' 23,123" E | 200M Indonesia |
| OCS 500 | 5° 33' 12,915" S | 97° 51' 37,914" E | 200M Indonesia |
| OCS 501 | 5° 33' 17,000" S | 97° 51' 41,615" E | 200M Indonesia |
| OCS 502 | 5° 33' 25,162" S | 97° 51' 49,028" E | 200M Indonesia |
| OCS 503 | 5° 33' 29,236" S | 97° 51' 52,736" E | 200M Indonesia |
| OCS 504 | 5° 34' 1,828" S | 97° 52' 22,472" E | 200M Indonesia |
| OCS 505 | 5° 34' 5,894" S | 97° 52' 26,191" E | 200M Indonesia |
| OCS 506 | 5° 34' 14,022" S | 97° 52' 33,640" E | 200M Indonesia |
| OCS 507 | 5° 34' 18,080" S | 97° 52' 37,369" E | 200M Indonesia |
| OCS 508 | 5° 34' 34,306" S | 97° 52' 52,310" E | 200M Indonesia |
| OCS 509 | 5° 34' 38,356" S | 97° 52' 56,048" E | 200M Indonesia |

| Name | Latitude | Longitude | Remark |
|-------------|------------------|-------------------|----------------|
| OCS 510 | 5° 34' 46,450" S | 97° 53' 3,535" E | 200M Indonesia |
| OCS 511 | 5° 34' 50,490" S | 97° 53' 7,282" E | 200M Indonesia |
| OCS 512 | 5° 35' 22,808" S | 97° 53' 37,316" E | 200M Indonesia |
| OCS 513 | 5° 35' 26,840" S | 97° 53' 41,072" E | 200M Indonesia |
| OCS 514 | 5° 35' 34,899" S | 97° 53' 48,596" E | 200M Indonesia |
| OCS 515 | 5° 35' 38,922" S | 97° 53' 52,362" E | 200M Indonesia |
| OCS 516 | 5° 35' 55,010" S | 97° 54' 7,451" E | 200M Indonesia |
| OCS 517 | 5° 35' 59,025" S | 97° 54' 11,226" E | 200M Indonesia |
| OCS 518 | 5° 36' 7,050" S | 97° 54' 18,788" E | 200M Indonesia |
| OCS 519 | 5° 36' 11,056" S | 97° 54' 22,571" E | 200M Indonesia |
| OCS 520 | 5° 36' 43,096" S | 97° 54' 52,901" E | 200M Indonesia |
| OCS 521 | 5° 36' 45,077" S | 97° 54' 54,778" E | 200M Indonesia |
| OCS 522 | 5° 36' 49,040" S | 97° 54' 58,539" E | 200M Indonesia |
| OCS 523 | 5° 36' 51,020" S | 97° 55' 0,420" E | 200M Indonesia |
| OCS 524 | 5° 36' 58,943" S | 97° 55' 7,954" E | 200M Indonesia |
| OCS 525 | 5° 37' 0,921" S | 97° 55' 9,837" E | 200M Indonesia |
| OCS 526 | 5° 37' 4,876" S | 97° 55' 13,607" E | 200M Indonesia |
| OCS 527 | 5° 37' 6,852" S | 97° 55' 15,493" E | 200M Indonesia |
| OCS 528 | 5° 37' 22,666" S | 97° 55' 30,600" E | 200M Indonesia |
| OCS 529 | 5° 37' 24,609" S | 97° 55' 32,458" E | 200M Indonesia |
| OCS 530 | 5° 37' 28,494" S | 97° 55' 36,178" E | 200M Indonesia |
| OCS 531 | 5° 37' 30,435" S | 97° 55' 38,039" E | 200M Indonesia |
| OCS 532 | 5° 37' 38,199" S | 97° 55' 45,489" E | 200M Indonesia |
| OCS 533 | 5° 37' 40,081" S | 97° 55' 47,297" E | 200M Indonesia |
| OCS 534 | 5° 37' 43,844" S | 97° 55' 50,915" E | 200M Indonesia |
| OCS 535 | 5° 37' 45,620" S | 97° 55' 52,625" E | 200M Indonesia |
| OCS 536 | 6° 13' 43,231" S | 98° 30' 34,899" E | 200M Indonesia |
| OCS 537 | 7° 25' 9,858" S | 99° 26' 28,517" E | 200M Indonesia |
| OCS 538 | 7° 25' 37,494" S | 99° 26' 50,072" E | 200M Indonesia |
| OCS 539 | 7° 25' 39,508" S | 99° 26' 51,644" E | 200M Indonesia |
| OCS 540 | 7° 25' 43,536" S | 99° 26' 54,792" E | 200M Indonesia |
| OCS 541 | 7° 25' 45,548" S | 99° 26' 56,367" E | 200M Indonesia |

| Name | Latitude | Longitude | Remark |
|-------------|------------------|-------------------|----------------|
| OCS 542 | 7° 25' 53,601" S | 99° 27' 2,676" E | 200M Indonesia |
| OCS 543 | 7° 25' 55,612" S | 99° 27' 4,253" E | 200M Indonesia |
| OCS 544 | 7° 25' 59,634" S | 99° 27' 7,410" E | 200M Indonesia |
| OCS 545 | 7° 26' 1,644" S | 99° 27' 8,990" E | 200M Indonesia |
| OCS 546 | 7° 26' 17,727" S | 99° 27' 21,644" E | 200M Indonesia |
| OCS 547 | 7° 26' 19,733" S | 99° 27' 23,225" E | 200M Indonesia |
| OCS 548 | 7° 26' 23,749" S | 99° 27' 26,391" E | 200M Indonesia |
| OCS 549 | 7° 26' 25,757" S | 99° 27' 27,976" E | 200M Indonesia |
| OCS 550 | 7° 26' 33,785" S | 99° 27' 34,320" E | 200M Indonesia |
| OCS 551 | 7° 26' 35,789" S | 99° 27' 35,906" E | 200M Indonesia |
| OCS 552 | 7° 26' 39,799" S | 99° 27' 39,082" E | 200M Indonesia |
| OCS 553 | 7° 26' 41,802" S | 99° 27' 40,670" E | 200M Indonesia |
| OCS 554 | 7° 26' 55,512" S | 99° 27' 51,553" E | 200M Indonesia |
| OCS 555 | 7° 26' 57,896" S | 99° 27' 53,447" E | 200M Indonesia |
| OCS 556 | 7° 27' 2,662" S | 99° 27' 57,240" E | 200M Indonesia |
| OCS 557 | 7° 27' 5,044" S | 99° 27' 59,138" E | 200M Indonesia |
| OCS 558 | 7° 27' 14,570" S | 99° 28' 6,738" E | 200M Indonesia |
| OCS 559 | 7° 27' 16,949" S | 99° 28' 8,639" E | 200M Indonesia |
| OCS 560 | 7° 27' 21,706" S | 99° 28' 12,445" E | 200M Indonesia |
| OCS 561 | 7° 27' 24,082" S | 99° 28' 14,348" E | 200M Indonesia |
| OCS 562 | 7° 27' 43,098" S | 99° 28' 29,600" E | 200M Indonesia |
| OCS 563 | 7° 27' 45,471" S | 99° 28' 31,506" E | 200M Indonesia |
| OCS 564 | 7° 27' 50,218" S | 99° 28' 35,323" E | 200M Indonesia |
| OCS 565 | 7° 27' 52,589" S | 99° 28' 37,232" E | 200M Indonesia |
| OCS 566 | 7° 28' 2,075" S | 99° 28' 44,880" E | 200M Indonesia |
| OCS 567 | 7° 28' 4,443" S | 99° 28' 46,792" E | 200M Indonesia |
| OCS 568 | 7° 28' 9,178" S | 99° 28' 50,619" E | 200M Indonesia |
| OCS 569 | 7° 28' 11,543" S | 99° 28' 52,533" E | 200M Indonesia |
| OCS 570 | 7° 28' 52,461" S | 99° 29' 25,695" E | 200M Indonesia |
| OCS 571 | 7° 28' 55,687" S | 99° 29' 28,315" E | 200M Indonesia |
| OCS 572 | 7° 29' 2,141" S | 99° 29' 33,564" E | 200M Indonesia |
| OCS 573 | 7° 29' 5,365" S | 99° 29' 36,191" E | 200M Indonesia |

| Name | Latitude | Longitude | Remark |
|-------------|------------------|-------------------|----------------|
| OCS 574 | 7° 29' 18,262" S | 99° 29' 46,717" E | 200M Indonesia |
| OCS 575 | 7° 29' 21,483" S | 99° 29' 49,352" E | 200M Indonesia |
| OCS 576 | 7° 29' 27,921" S | 99° 29' 54,625" E | 200M Indonesia |
| OCS 577 | 7° 29' 31,135" S | 99° 29' 57,262" E | 200M Indonesia |
| OCS 578 | 7° 29' 56,861" S | 99° 30' 18,410" E | 200M Indonesia |
| OCS 579 | 7° 30' 0,509" S | 99° 30' 21,414" E | 200M Indonesia |
| OCS 580 | 7° 30' 7,801" S | 99° 30' 27,433" E | 200M Indonesia |
| OCS 581 | 7° 30' 11,443" S | 99° 30' 30,444" E | 200M Indonesia |
| OCS 582 | 7° 30' 26,007" S | 99° 30' 42,513" E | 200M Indonesia |
| OCS 583 | 7° 30' 30,576" S | 99° 30' 46,309" E | 200M Indonesia |
| OCS 584 | 7° 30' 39,708" S | 99° 30' 53,914" E | 200M Indonesia |
| OCS 585 | 7° 30' 45,878" S | 99° 30' 59,070" E | 200M Indonesia |
| OCS 586 | 7° 30' 49,281" S | 99° 31' 1,924" E | 200M Indonesia |
| OCS 587 | 7° 30' 50,702" S | 99° 31' 3,116" E | 200M Indonesia |
| OCS 588 | 7° 31' 0,846" S | 99° 31' 11,637" E | 200M Indonesia |
| OCS 589 | 7° 31' 3,379" S | 99° 31' 13,768" E | 200M Indonesia |
| OCS 590 | 7° 31' 8,443" S | 99° 31' 18,033" E | 200M Indonesia |
| OCS 591 | 7° 31' 10,971" S | 99° 31' 20,166" E | 200M Indonesia |
| OCS 592 | 7° 31' 34,669" S | 99° 31' 40,184" E | 200M Indonesia |
| OCS 593 | 7° 31' 37,626" S | 99° 31' 42,686" E | 200M Indonesia |
| OCS 594 | 7° 31' 43,540" S | 99° 31' 47,698" E | 200M Indonesia |
| OCS 595 | 7° 31' 46,493" S | 99° 31' 50,205" E | 200M Indonesia |
| OCS 596 | 7° 31' 58,307" S | 99° 32' 0,250" E | 200M Indonesia |
| OCS 597 | 7° 32' 1,256" S | 99° 32' 2,762" E | 200M Indonesia |
| OCS 598 | 7° 32' 7,152" S | 99° 32' 7,792" E | 200M Indonesia |
| OCS 599 | 7° 32' 10,096" S | 99° 32' 10,307" E | 200M Indonesia |
| OCS 600 | 7° 32' 50,115" S | 99° 32' 44,558" E | 200M Indonesia |
| OCS 601 | 7° 32' 52,362" S | 99° 32' 46,484" E | 200M Indonesia |
| OCS 602 | 7° 32' 56,862" S | 99° 32' 50,345" E | 200M Indonesia |
| OCS 603 | 7° 32' 59,111" S | 99° 32' 52,277" E | 200M Indonesia |
| OCS 604 | 7° 33' 8,107" S | 99° 33' 0,015" E | 200M Indonesia |
| OCS 605 | 7° 33' 10,354" S | 99° 33' 1,950" E | 200M Indonesia |

| Name | Latitude | Longitude | Remark |
|-------------|------------------|-------------------|----------------|
| OCS 606 | 7° 33' 14,846" S | 99° 33' 5,824" E | 200M Indonesia |
| OCS 607 | 7° 33' 17,090" S | 99° 33' 7,761" E | 200M Indonesia |
| OCS 608 | 7° 33' 35,049" S | 99° 33' 23,286" E | 200M Indonesia |
| OCS 609 | 7° 33' 37,290" S | 99° 33' 25,226" E | 200M Indonesia |
| OCS 610 | 7° 33' 41,774" S | 99° 33' 29,112" E | 200M Indonesia |
| OCS 611 | 7° 33' 44,014" S | 99° 33' 31,056" E | 200M Indonesia |
| OCS 612 | 7° 33' 52,973" S | 99° 33' 38,840" E | 200M Indonesia |
| OCS 613 | 7° 33' 55,211" S | 99° 33' 40,786" E | 200M Indonesia |
| OCS 614 | 7° 33' 59,684" S | 99° 33' 44,683" E | 200M Indonesia |
| OCS 615 | 7° 34' 1,918" S | 99° 33' 46,631" E | 200M Indonesia |
| OCS 616 | 7° 34' 19,903" S | 99° 34' 2,335" E | 200M Indonesia |
| OCS 617 | 7° 34' 23,671" S | 99° 34' 5,632" E | 200M Indonesia |
| OCS 618 | 7° 34' 31,202" S | 99° 34' 12,236" E | 200M Indonesia |
| OCS 619 | 7° 34' 34,963" S | 99° 34' 15,540" E | 200M Indonesia |
| OCS 620 | 7° 34' 49,998" S | 99° 34' 28,780" E | 200M Indonesia |
| OCS 621 | 7° 34' 53,752" S | 99° 34' 32,092" E | 200M Indonesia |
| OCS 622 | 7° 35' 1,254" S | 99° 34' 38,725" E | 200M Indonesia |
| OCS 623 | 7° 35' 4,999" S | 99° 34' 42,045" E | 200M Indonesia |
| OCS 624 | 7° 35' 34,963" S | 99° 35' 8,652" E | 200M Indonesia |
| OCS 625 | 7° 35' 38,702" S | 99° 35' 11,979" E | 200M Indonesia |
| OCS 626 | 7° 35' 46,176" S | 99° 35' 18,645" E | 200M Indonesia |
| OCS 627 | 7° 35' 49,909" S | 99° 35' 21,980" E | 200M Indonesia |
| OCS 628 | 7° 36' 4,834" S | 99° 35' 35,345" E | 200M Indonesia |
| OCS 629 | 7° 36' 8,560" S | 99° 35' 38,689" E | 200M Indonesia |
| OCS 630 | 7° 36' 16,007" S | 99° 35' 45,386" E | 200M Indonesia |
| OCS 631 | 7° 36' 19,726" S | 99° 35' 48,737" E | 200M Indonesia |
| OCS 632 | 7° 36' 41,100" S | 99° 36' 8,039" E | 200M Indonesia |
| OCS 633 | 7° 36' 43,539" S | 99° 36' 10,244" E | 200M Indonesia |
| OCS 634 | 7° 36' 48,416" S | 99° 36' 14,661" E | 200M Indonesia |
| OCS 635 | 7° 36' 50,852" S | 99° 36' 16,870" E | 200M Indonesia |
| OCS 636 | 7° 37' 0,596" S | 99° 36' 25,718" E | 200M Indonesia |
| OCS 637 | 7° 37' 3,028" S | 99° 36' 27,929" E | 200M Indonesia |

| Name | Latitude | Longitude | Remark |
|-------------|------------------|-------------------|----------------|
| OCS 638 | 7° 37' 7,893" S | 99° 36' 32,358" E | 200M Indonesia |
| OCS 639 | 7° 37' 10,322" S | 99° 36' 34,574" E | 200M Indonesia |
| OCS 640 | 7° 37' 29,765" S | 99° 36' 52,326" E | 200M Indonesia |
| OCS 641 | 7° 37' 32,191" S | 99° 36' 54,544" E | 200M Indonesia |
| OCS 642 | 7° 37' 37,043" S | 99° 36' 58,987" E | 200M Indonesia |
| OCS 643 | 7° 37' 39,466" S | 99° 37' 1,208" E | 200M Indonesia |
| OCS 644 | 7° 37' 49,161" S | 99° 37' 10,109" E | 200M Indonesia |
| OCS 645 | 7° 37' 51,582" S | 99° 37' 12,334" E | 200M Indonesia |
| OCS 646 | 7° 37' 56,420" S | 99° 37' 16,789" E | 200M Indonesia |
| OCS 647 | 7° 37' 58,836" S | 99° 37' 19,016" E | 200M Indonesia |
| OCS 648 | 7° 38' 33,930" S | 99° 37' 51,414" E | 200M Indonesia |
| OCS 649 | 7° 38' 37,441" S | 99° 37' 54,662" E | 200M Indonesia |
| OCS 650 | 7° 38' 44,459" S | 99° 38' 1,167" E | 200M Indonesia |
| OCS 651 | 7° 38' 47,964" S | 99° 38' 4,422" E | 200M Indonesia |
| OCS 652 | 7° 39' 1,981" S | 99° 38' 17,466" E | 200M Indonesia |
| OCS 653 | 7° 39' 5,481" S | 99° 38' 20,730" E | 200M Indonesia |
| OCS 654 | 7° 39' 12,474" S | 99° 38' 27,264" E | 200M Indonesia |
| OCS 655 | 7° 39' 15,965" S | 99° 38' 30,532" E | 200M Indonesia |
| OCS 656 | 7° 39' 43,899" S | 99° 38' 56,736" E | 200M Indonesia |
| OCS 657 | 7° 39' 47,385" S | 99° 39' 0,013" E | 200M Indonesia |
| OCS 658 | 7° 39' 54,354" S | 99° 39' 6,576" E | 200M Indonesia |
| OCS 659 | 7° 39' 57,833" S | 99° 39' 9,860" E | 200M Indonesia |
| OCS 660 | 7° 40' 11,748" S | 99° 39' 23,018" E | 200M Indonesia |
| OCS 661 | 7° 40' 15,223" S | 99° 39' 26,310" E | 200M Indonesia |
| OCS 662 | 7° 40' 22,167" S | 99° 39' 32,903" E | 200M Indonesia |
| OCS 663 | 7° 40' 25,635" S | 99° 39' 36,203" E | 200M Indonesia |
| OCS 664 | 7° 40' 29,197" S | 99° 39' 39,598" E | 200M Indonesia |
| OCS 665 | 7° 40' 31,579" S | 99° 39' 41,871" E | 200M Indonesia |
| OCS 666 | 7° 40' 36,338" S | 99° 39' 46,420" E | 200M Indonesia |
| OCS 667 | 7° 40' 38,716" S | 99° 39' 48,696" E | 200M Indonesia |
| OCS 668 | 7° 40' 48,224" S | 99° 39' 57,809" E | 200M Indonesia |
| OCS 669 | 7° 40' 50,599" S | 99° 40' 0,088" E | 200M Indonesia |

| Name | Latitude | Longitude | Remark |
|-------------|------------------|-------------------|----------------|
| OCS 670 | 7° 40' 55,345" S | 99° 40' 4,649" E | 200M Indonesia |
| OCS 671 | 7° 40' 57,716" S | 99° 40' 6,931" E | 200M Indonesia |
| OCS 672 | 7° 41' 16,683" S | 99° 40' 25,209" E | 200M Indonesia |
| OCS 673 | 7° 41' 19,048" S | 99° 40' 27,492" E | 200M Indonesia |
| OCS 674 | 7° 41' 23,781" S | 99° 40' 32,066" E | 200M Indonesia |
| OCS 675 | 7° 41' 26,146" S | 99° 40' 34,354" E | 200M Indonesia |
| OCS 676 | 7° 41' 35,602" S | 99° 40' 43,517" E | 200M Indonesia |
| OCS 677 | 7° 41' 37,962" S | 99° 40' 45,807" E | 200M Indonesia |
| OCS 678 | 7° 41' 42,681" S | 99° 40' 50,393" E | 200M Indonesia |
| OCS 679 | 7° 41' 45,037" S | 99° 40' 52,685" E | 200M Indonesia |
| OCS 680 | 7° 42' 22,776" S | 99° 41' 29,456" E | 200M Indonesia |
| OCS 681 | 7° 42' 25,128" S | 99° 41' 31,751" E | 200M Indonesia |
| OCS 682 | 7° 42' 29,833" S | 99° 41' 36,349" E | 200M Indonesia |
| OCS 683 | 7° 42' 32,184" S | 99° 41' 38,649" E | 200M Indonesia |
| OCS 684 | 7° 42' 41,587" S | 99° 41' 47,861" E | 200M Indonesia |
| OCS 685 | 7° 42' 43,935" S | 99° 41' 50,165" E | 200M Indonesia |
| OCS 686 | 7° 42' 48,629" S | 99° 41' 54,777" E | 200M Indonesia |
| OCS 687 | 7° 42' 50,973" S | 99° 41' 57,083" E | 200M Indonesia |
| OCS 688 | 7° 43' 9,734" S | 99° 42' 15,565" E | 200M Indonesia |
| OCS 689 | 7° 43' 12,077" S | 99° 42' 17,875" E | 200M Indonesia |
| OCS 690 | 7° 43' 16,759" S | 99° 42' 22,501" E | 200M Indonesia |
| OCS 691 | 7° 43' 19,096" S | 99° 42' 24,813" E | 200M Indonesia |
| OCS 692 | 7° 43' 28,451" S | 99° 42' 34,079" E | 200M Indonesia |
| OCS 693 | 7° 43' 30,788" S | 99° 42' 36,397" E | 200M Indonesia |
| OCS 694 | 7° 43' 35,458" S | 99° 42' 41,036" E | 200M Indonesia |
| OCS 695 | 7° 43' 37,790" S | 99° 42' 43,356" E | 200M Indonesia |
| OCS 696 | 7° 43' 51,226" S | 99° 42' 56,738" E | 200M Indonesia |
| OCS 697 | 7° 43' 54,613" S | 99° 43' 0,118" E | 200M Indonesia |
| OCS 698 | 7° 44' 1,384" S | 99° 43' 6,889" E | 200M Indonesia |
| OCS 699 | 7° 44' 4,765" S | 99° 43' 10,276" E | 200M Indonesia |
| OCS 700 | 7° 44' 18,280" S | 99° 43' 23,845" E | 200M Indonesia |
| OCS 701 | 7° 44' 21,653" S | 99° 43' 27,239" E | 200M Indonesia |

| Name | Latitude | Longitude | Remark |
|-------------|------------------|-------------------|----------------|
| OCS 702 | 7° 44' 28,396" S | 99° 43' 34,035" E | 200M Indonesia |
| OCS 703 | 7° 44' 31,762" S | 99° 43' 37,435" E | 200M Indonesia |
| OCS 704 | 7° 44' 58,686" S | 99° 44' 4,683" E | 200M Indonesia |
| OCS 705 | 7° 45' 2,046" S | 99° 44' 8,090" E | 200M Indonesia |
| OCS 706 | 7° 45' 8,761" S | 99° 44' 14,913" E | 200M Indonesia |
| OCS 707 | 7° 45' 12,114" S | 99° 44' 18,326" E | 200M Indonesia |
| OCS 708 | 7° 45' 25,520" S | 99° 44' 32,003" E | 200M Indonesia |
| OCS 709 | 7° 45' 28,867" S | 99° 44' 35,424" E | 200M Indonesia |
| OCS 710 | 7° 45' 35,554" S | 99° 44' 42,273" E | 200M Indonesia |
| OCS 711 | 7° 45' 38,894" S | 99° 44' 45,700" E | 200M Indonesia |
| OCS 712 | 7° 46' 2,411" S | 99° 45' 9,883" E | 200M Indonesia |
| OCS 713 | 7° 46' 4,701" S | 99° 45' 12,242" E | 200M Indonesia |
| OCS 714 | 7° 46' 9,283" S | 99° 45' 16,966" E | 200M Indonesia |
| OCS 715 | 7° 46' 11,571" S | 99° 45' 19,329" E | 200M Indonesia |
| OCS 716 | 7° 46' 20,723" S | 99° 45' 28,792" E | 200M Indonesia |
| OCS 717 | 7° 46' 23,008" S | 99° 45' 31,158" E | 200M Indonesia |
| OCS 718 | 7° 46' 27,576" S | 99° 45' 35,894" E | 200M Indonesia |
| OCS 719 | 7° 46' 29,858" S | 99° 45' 38,263" E | 200M Indonesia |
| OCS 720 | 7° 46' 48,115" S | 99° 45' 57,244" E | 200M Indonesia |
| OCS 721 | 7° 46' 50,392" S | 99° 45' 59,615" E | 200M Indonesia |
| OCS 722 | 7° 46' 54,948" S | 99° 46' 4,365" E | 200M Indonesia |
| OCS 723 | 7° 46' 57,224" S | 99° 46' 6,741" E | 200M Indonesia |
| OCS 724 | 7° 47' 6,325" S | 99° 46' 16,254" E | 200M Indonesia |
| OCS 725 | 7° 47' 8,596" S | 99° 46' 18,632" E | 200M Indonesia |
| OCS 726 | 7° 47' 13,138" S | 99° 46' 23,393" E | 200M Indonesia |
| OCS 727 | 7° 47' 15,405" S | 99° 46' 25,773" E | 200M Indonesia |
| OCS 728 | 7° 47' 44,944" S | 99° 46' 56,823" E | 200M Indonesia |
| OCS 729 | 7° 47' 46,608" S | 99° 46' 58,574" E | 200M Indonesia |
| OCS 730 | 7° 47' 49,939" S | 99° 47' 2,083" E | 200M Indonesia |
| OCS 731 | 7° 47' 51,604" S | 99° 47' 3,839" E | 200M Indonesia |
| OCS 732 | 7° 47' 58,263" S | 99° 47' 10,866" E | 200M Indonesia |
| OCS 733 | 7° 47' 59,925" S | 99° 47' 12,622" E | 200M Indonesia |

| Name | Latitude | Longitude | Remark |
|-------------|------------------|-------------------|----------------|
| OCS 734 | 7° 48' 3,249" S | 99° 47' 16,138" E | 200M Indonesia |
| OCS 735 | 7° 48' 4,909" S | 99° 47' 17,895" E | 200M Indonesia |
| OCS 736 | 7° 48' 18,202" S | 99° 47' 31,982" E | 200M Indonesia |
| OCS 737 | 7° 48' 19,862" S | 99° 47' 33,743" E | 200M Indonesia |
| OCS 738 | 7° 48' 23,181" S | 99° 47' 37,267" E | 200M Indonesia |
| OCS 739 | 7° 48' 24,837" S | 99° 47' 39,027" E | 200M Indonesia |
| OCS 740 | 7° 48' 31,469" S | 99° 47' 46,084" E | 200M Indonesia |
| OCS 741 | 7° 48' 33,127" S | 99° 47' 47,850" E | 200M Indonesia |
| OCS 742 | 7° 48' 36,439" S | 99° 47' 51,381" E | 200M Indonesia |
| OCS 743 | 7° 48' 38,092" S | 99° 47' 53,145" E | 200M Indonesia |
| OCS 744 | 7° 48' 44,821" S | 99° 48' 0,333" E | 200M Indonesia |
| OCS 745 | 7° 48' 47,069" S | 99° 48' 2,738" E | 200M Indonesia |
| OCS 746 | 7° 48' 51,563" S | 99° 48' 7,552" E | 200M Indonesia |
| OCS 747 | 7° 48' 53,808" S | 99° 48' 9,961" E | 200M Indonesia |
| OCS 748 | 7° 49' 2,784" S | 99° 48' 19,603" E | 200M Indonesia |
| OCS 749 | 7° 49' 5,025" S | 99° 48' 22,014" E | 200M Indonesia |
| OCS 750 | 7° 49' 9,506" S | 99° 48' 26,840" E | 200M Indonesia |
| OCS 751 | 7° 49' 11,743" S | 99° 48' 29,253" E | 200M Indonesia |
| OCS 752 | 7° 49' 29,643" S | 99° 48' 48,588" E | 200M Indonesia |
| OCS 753 | 7° 49' 31,877" S | 99° 48' 51,004" E | 200M Indonesia |
| OCS 754 | 7° 49' 36,345" S | 99° 48' 55,843" E | 200M Indonesia |
| OCS 755 | 7° 49' 38,578" S | 99° 48' 58,265" E | 200M Indonesia |
| OCS 756 | 7° 49' 47,504" S | 99° 49' 7,959" E | 200M Indonesia |
| OCS 757 | 7° 49' 49,735" S | 99° 49' 10,386" E | 200M Indonesia |
| OCS 758 | 7° 49' 54,194" S | 99° 49' 15,242" E | 200M Indonesia |
| OCS 759 | 7° 49' 56,425" S | 99° 49' 17,675" E | 200M Indonesia |
| OCS 760 | 7° 50' 5,903" S | 99° 49' 28,026" E | 200M Indonesia |
| OCS 761 | 7° 57' 53,357" S | 99° 57' 50,384" E | 200M Indonesia |
| OCS 762 | 7° 57' 55,859" S | 99° 57' 53,078" E | 200M Indonesia |
| OCS 763 | 7° 58' 0,912" S | 99° 57' 58,527" E | 200M Indonesia |
| OCS 764 | 7° 58' 3,435" S | 99° 58' 1,253" E | 200M Indonesia |
| OCS 765 | 7° 58' 13,580" S | 99° 58' 12,228" E | 200M Indonesia |

| Name | Latitude | Longitude | Remark |
|-------------|------------------|-------------------|----------------|
| OCS 766 | 7° 58' 16,112" S | 99° 58' 14,971" E | 200M Indonesia |
| OCS 767 | 7° 58' 21,175" S | 99° 58' 20,465" E | 200M Indonesia |
| OCS 768 | 7° 58' 23,703" S | 99° 58' 23,213" E | 200M Indonesia |
| OCS 769 | 7° 58' 43,982" S | 99° 58' 45,289" E | 200M Indonesia |
| OCS 770 | 7° 58' 46,512" S | 99° 58' 48,047" E | 200M Indonesia |
| OCS 771 | 7° 58' 51,570" S | 99° 58' 53,571" E | 200M Indonesia |
| OCS 772 | 7° 58' 54,097" S | 99° 58' 56,334" E | 200M Indonesia |
| OCS 773 | 7° 59' 4,199" S | 99° 59' 7,401" E | 200M Indonesia |
| OCS 774 | 7° 59' 6,720" S | 99° 59' 10,167" E | 200M Indonesia |
| OCS 775 | 7° 59' 11,760" S | 99° 59' 15,705" E | 200M Indonesia |
| OCS 776 | 7° 59' 14,276" S | 99° 59' 18,474" E | 200M Indonesia |
| OCS 777 | 7° 59' 52,790" S | 100° 0' 0,930" E | 200M Indonesia |
| OCS 778 | 7° 59' 57,592" S | 100° 0' 6,239" E | 200M Indonesia |
| OCS 779 | 8° 0' 7,185" S | 100° 0' 16,878" E | 200M Indonesia |
| OCS 780 | 8° 0' 11,973" S | 100° 0' 22,203" E | 200M Indonesia |
| OCS 781 | 8° 0' 31,101" S | 100° 0' 43,544" E | 200M Indonesia |
| OCS 782 | 8° 0' 35,873" S | 100° 0' 48,884" E | 200M Indonesia |
| OCS 783 | 8° 0' 45,403" S | 100° 0' 59,580" E | 200M Indonesia |
| OCS 784 | 8° 0' 50,157" S | 100° 1' 4,933" E | 200M Indonesia |
| OCS 785 | 8° 1' 28,165" S | 100° 1' 47,849" E | 200M Indonesia |
| OCS 786 | 8° 1' 32,903" S | 100° 1' 53,216" E | 200M Indonesia |
| OCS 787 | 8° 1' 42,370" S | 100° 2' 3,969" E | 200M Indonesia |
| OCS 788 | 8° 1' 47,093" S | 100° 2' 9,351" E | 200M Indonesia |
| OCS 789 | 8° 2' 5,967" S | 100° 2' 30,921" E | 200M Indonesia |
| OCS 790 | 8° 2' 10,675" S | 100° 2' 36,317" E | 200M Indonesia |
| OCS 791 | 8° 2' 20,077" S | 100° 2' 47,127" E | 200M Indonesia |
| OCS 792 | 8° 2' 24,767" S | 100° 2' 52,536" E | 200M Indonesia |
| OCS 793 | 8° 3' 2,262" S | 100° 3' 35,906" E | 200M Indonesia |
| OCS 794 | 8° 3' 4,748" S | 100° 3' 38,786" E | 200M Indonesia |
| OCS 795 | 8° 3' 9,721" S | 100° 3' 44,556" E | 200M Indonesia |
| OCS 796 | 8° 3' 12,204" S | 100° 3' 47,443" E | 200M Indonesia |
| OCS 797 | 8° 3' 22,135" S | 100° 3' 59,004" E | 200M Indonesia |

| Name | Latitude | Longitude | Remark |
|-------------|-----------------|-------------------|----------------|
| OCS 798 | 8° 3' 24,614" S | 100° 4' 1,895" E | 200M Indonesia |
| OCS 799 | 8° 3' 29,569" S | 100° 4' 7,682" E | 200M Indonesia |
| OCS 800 | 8° 3' 32,043" S | 100° 4' 10,576" E | 200M Indonesia |
| OCS 801 | 8° 3' 51,837" S | 100° 4' 33,768" E | 200M Indonesia |
| OCS 802 | 8° 3' 54,629" S | 100° 4' 37,046" E | 200M Indonesia |
| OCS 803 | 8° 4' 0,210" S | 100° 4' 43,608" E | 200M Indonesia |
| OCS 804 | 8° 4' 2,997" S | 100° 4' 46,892" E | 200M Indonesia |
| OCS 805 | 8° 4' 14,138" S | 100° 5' 0,040" E | 200M Indonesia |
| OCS 806 | 8° 4' 17,613" S | 100° 5' 4,151" E | 200M Indonesia |
| OCS 807 | 8° 4' 24,557" S | 100° 5' 12,383" E | 200M Indonesia |
| OCS 808 | 8° 4' 28,985" S | 100° 5' 17,649" E | 200M Indonesia |
| OCS 809 | 8° 4' 31,401" S | 100° 5' 20,530" E | 200M Indonesia |
| OCS 810 | 8° 4' 38,469" S | 100° 5' 28,968" E | 200M Indonesia |
| OCS 811 | 8° 4' 40,117" S | 100° 5' 30,939" E | 200M Indonesia |
| OCS 812 | 8° 4' 43,413" S | 100° 5' 34,883" E | 200M Indonesia |
| OCS 813 | 8° 4' 45,059" S | 100° 5' 36,854" E | 200M Indonesia |
| OCS 814 | 8° 5' 0,777" S | 100° 5' 55,703" E | 200M Indonesia |
| OCS 815 | 8° 5' 2,738" S | 100° 5' 58,058" E | 200M Indonesia |
| OCS 816 | 8° 5' 6,660" S | 100° 6' 2,773" E | 200M Indonesia |
| OCS 817 | 8° 5' 8,618" S | 100° 6' 5,131" E | 200M Indonesia |
| OCS 818 | 8° 5' 16,451" S | 100° 6' 14,572" E | 200M Indonesia |
| OCS 819 | 8° 5' 18,406" S | 100° 6' 16,932" E | 200M Indonesia |
| OCS 820 | 8° 5' 22,314" S | 100° 6' 21,655" E | 200M Indonesia |
| OCS 821 | 8° 5' 24,264" S | 100° 6' 24,015" E | 200M Indonesia |
| OCS 822 | 8° 5' 57,829" S | 100° 7' 4,688" E | 200M Indonesia |
| OCS 823 | 8° 6' 2,014" S | 100° 7' 9,774" E | 200M Indonesia |
| OCS 824 | 8° 6' 10,375" S | 100° 7' 19,961" E | 200M Indonesia |
| OCS 825 | 8° 6' 14,547" S | 100° 7' 25,060" E | 200M Indonesia |
| OCS 826 | 8° 6' 31,216" S | 100° 7' 45,486" E | 200M Indonesia |
| OCS 827 | 8° 6' 35,374" S | 100° 7' 50,596" E | 200M Indonesia |
| OCS 828 | 8° 6' 43,679" S | 100° 8' 0,829" E | 200M Indonesia |
| OCS 829 | 8° 6' 47,822" S | 100° 8' 5,949" E | 200M Indonesia |

| Name | Latitude | Longitude | Remark |
|-------------|------------------|--------------------|----------------|
| OCS 830 | 8° 7' 20,942" S | 100° 8' 46,992" E | 200M Indonesia |
| OCS 831 | 8° 7' 25,070" S | 100° 8' 52,122" E | 200M Indonesia |
| OCS 832 | 8° 7' 33,319" S | 100° 9' 2,402" E | 200M Indonesia |
| OCS 833 | 8° 7' 37,435" S | 100° 9' 7,546" E | 200M Indonesia |
| OCS 834 | 8° 7' 53,881" S | 100° 9' 28,156" E | 200M Indonesia |
| OCS 835 | 8° 7' 57,983" S | 100° 9' 33,312" E | 200M Indonesia |
| OCS 836 | 8° 8' 6,175" S | 100° 9' 43,636" E | 200M Indonesia |
| OCS 837 | 8° 8' 10,262" S | 100° 9' 48,802" E | 200M Indonesia |
| OCS 838 | 8° 8' 42,931" S | 100° 10' 30,208" E | 200M Indonesia |
| OCS 839 | 8° 8' 47,003" S | 100° 10' 35,384" E | 200M Indonesia |
| OCS 840 | 8° 8' 55,139" S | 100° 10' 45,754" E | 200M Indonesia |
| OCS 841 | 8° 8' 59,199" S | 100° 10' 50,944" E | 200M Indonesia |
| OCS 842 | 8° 9' 15,418" S | 100° 11' 11,735" E | 200M Indonesia |
| OCS 843 | 8° 9' 19,464" S | 100° 11' 16,935" E | 200M Indonesia |
| OCS 844 | 8° 9' 27,543" S | 100° 11' 27,350" E | 200M Indonesia |
| OCS 845 | 8° 9' 31,573" S | 100° 11' 32,560" E | 200M Indonesia |
| OCS 846 | 8° 10' 3,788" S | 100° 12' 14,326" E | 200M Indonesia |
| OCS 847 | 8° 10' 7,804" S | 100° 12' 19,547" E | 200M Indonesia |
| OCS 848 | 8° 10' 15,826" S | 100° 12' 30,007" E | 200M Indonesia |
| OCS 849 | 8° 10' 19,828" S | 100° 12' 35,241" E | 200M Indonesia |
| OCS 850 | 8° 10' 35,820" S | 100° 12' 56,210" E | 200M Indonesia |
| OCS 851 | 8° 10' 39,808" S | 100° 13' 1,455" E | 200M Indonesia |
| OCS 852 | 8° 10' 47,773" S | 100° 13' 11,959" E | 200M Indonesia |
| OCS 853 | 8° 10' 51,746" S | 100° 13' 17,213" E | 200M Indonesia |
| OCS 854 | 8° 11' 23,502" S | 100° 13' 59,332" E | 200M Indonesia |
| OCS 855 | 8° 11' 27,461" S | 100° 14' 4,598" E | 200M Indonesia |
| OCS 856 | 8° 11' 35,368" S | 100° 14' 15,146" E | 200M Indonesia |
| OCS 857 | 8° 11' 39,313" S | 100° 14' 20,424" E | 200M Indonesia |
| OCS 858 | 8° 11' 55,074" S | 100° 14' 41,569" E | 200M Indonesia |
| OCS 859 | 8° 11' 59,006" S | 100° 14' 46,858" E | 200M Indonesia |
| OCS 860 | 8° 12' 6,855" S | 100° 14' 57,449" E | 200M Indonesia |
| OCS 861 | 8° 12' 10,770" S | 100° 15' 2,747" E | 200M Indonesia |

| Name | Latitude | Longitude | Remark |
|-------------|------------------|--------------------|----------------|
| OCS 862 | 8° 12' 42,065" S | 100° 15' 45,216" E | 200M Indonesia |
| OCS 863 | 8° 12' 45,965" S | 100° 15' 50,524" E | 200M Indonesia |
| OCS 864 | 8° 12' 53,757" S | 100° 16' 1,159" E | 200M Indonesia |
| OCS 865 | 8° 12' 57,645" S | 100° 16' 6,481" E | 200M Indonesia |
| OCS 866 | 8° 13' 13,174" S | 100° 16' 27,799" E | 200M Indonesia |
| OCS 867 | 8° 13' 17,047" S | 100° 16' 33,131" E | 200M Indonesia |
| OCS 868 | 8° 13' 24,780" S | 100° 16' 43,809" E | 200M Indonesia |
| OCS 869 | 8° 13' 28,637" S | 100° 16' 49,150" E | 200M Indonesia |
| OCS 870 | 8° 13' 59,466" S | 100° 17' 31,963" E | 200M Indonesia |
| OCS 871 | 8° 14' 3,309" S | 100° 17' 37,315" E | 200M Indonesia |
| OCS 872 | 8° 14' 10,984" S | 100° 17' 48,036" E | 200M Indonesia |
| OCS 873 | 8° 14' 14,813" S | 100° 17' 53,399" E | 200M Indonesia |
| OCS 874 | 8° 14' 30,108" S | 100° 18' 14,889" E | 200M Indonesia |
| OCS 875 | 8° 14' 33,923" S | 100° 18' 20,263" E | 200M Indonesia |
| OCS 876 | 8° 14' 41,539" S | 100° 18' 31,026" E | 200M Indonesia |
| OCS 877 | 8° 14' 45,338" S | 100° 18' 36,410" E | 200M Indonesia |
| OCS 878 | 8° 15' 15,697" S | 100° 19' 19,562" E | 200M Indonesia |
| OCS 879 | 8° 15' 19,481" S | 100° 19' 24,956" E | 200M Indonesia |
| OCS 880 | 8° 15' 27,039" S | 100° 19' 35,761" E | 200M Indonesia |
| OCS 881 | 8° 15' 30,809" S | 100° 19' 41,167" E | 200M Indonesia |
| OCS 882 | 8° 15' 45,869" S | 100° 20' 2,824" E | 200M Indonesia |
| OCS 883 | 8° 15' 49,624" S | 100° 20' 8,241" E | 200M Indonesia |
| OCS 884 | 8° 15' 57,122" S | 100° 20' 19,087" E | 200M Indonesia |
| OCS 885 | 8° 16' 0,862" S | 100° 20' 24,513" E | 200M Indonesia |
| OCS 886 | 8° 16' 30,748" S | 100° 21' 7,999" E | 200M Indonesia |
| OCS 887 | 8° 16' 34,473" S | 100° 21' 13,435" E | 200M Indonesia |
| OCS 888 | 8° 16' 41,912" S | 100° 21' 24,323" E | 200M Indonesia |
| OCS 889 | 8° 16' 45,623" S | 100° 21' 29,771" E | 200M Indonesia |
| OCS 890 | 8° 17' 0,445" S | 100° 21' 51,593" E | 200M Indonesia |
| OCS 891 | 8° 17' 4,141" S | 100° 21' 57,051" E | 200M Indonesia |
| OCS 892 | 8° 17' 11,521" S | 100° 22' 7,980" E | 200M Indonesia |
| OCS 893 | 8° 17' 15,201" S | 100° 22' 13,447" E | 200M Indonesia |

| Name | Latitude | Longitude | Remark |
|-------------|------------------|--------------------|----------------|
| OCS 894 | 8° 17' 44,610" S | 100° 22' 57,261" E | 200M Indonesia |
| OCS 895 | 8° 17' 48,275" S | 100° 23' 2,738" E | 200M Indonesia |
| OCS 896 | 8° 17' 55,594" S | 100° 23' 13,707" E | 200M Indonesia |
| OCS 897 | 8° 17' 59,246" S | 100° 23' 19,196" E | 200M Indonesia |
| OCS 898 | 8° 18' 13,829" S | 100° 23' 41,181" E | 200M Indonesia |
| OCS 899 | 8° 18' 17,465" S | 100° 23' 46,680" E | 200M Indonesia |
| OCS 900 | 8° 18' 24,724" S | 100° 23' 57,690" E | 200M Indonesia |
| OCS 901 | 8° 18' 28,345" S | 100° 24' 3,197" E | 200M Indonesia |
| OCS 902 | 8° 18' 57,273" S | 100° 24' 47,335" E | 200M Indonesia |
| OCS 903 | 8° 19' 0,879" S | 100° 24' 52,852" E | 200M Indonesia |
| OCS 904 | 8° 19' 8,078" S | 100° 25' 3,903" E | 200M Indonesia |
| OCS 905 | 8° 19' 11,669" S | 100° 25' 9,431" E | 200M Indonesia |
| OCS 906 | 8° 19' 26,011" S | 100° 25' 31,577" E | 200M Indonesia |
| OCS 907 | 8° 19' 29,587" S | 100° 25' 37,116" E | 200M Indonesia |
| OCS 908 | 8° 19' 36,726" S | 100° 25' 48,206" E | 200M Indonesia |
| OCS 909 | 8° 19' 40,286" S | 100° 25' 53,753" E | 200M Indonesia |
| OCS 910 | 8° 20' 8,730" S | 100° 26' 38,209" E | 200M Indonesia |
| OCS 911 | 8° 20' 12,275" S | 100° 26' 43,766" E | 200M Indonesia |
| OCS 912 | 8° 20' 19,353" S | 100° 26' 54,895" E | 200M Indonesia |
| OCS 913 | 8° 20' 22,883" S | 100° 27' 0,463" E | 200M Indonesia |
| OCS 914 | 8° 20' 36,982" S | 100° 27' 22,767" E | 200M Indonesia |
| OCS 915 | 8° 20' 40,498" S | 100° 27' 28,344" E | 200M Indonesia |
| OCS 916 | 8° 20' 47,515" S | 100° 27' 39,513" E | 200M Indonesia |
| OCS 917 | 8° 20' 51,014" S | 100° 27' 45,099" E | 200M Indonesia |
| OCS 918 | 8° 21' 18,972" S | 100° 28' 29,868" E | 200M Indonesia |
| OCS 919 | 8° 21' 22,456" S | 100° 28' 35,464" E | 200M Indonesia |
| OCS 920 | 8° 21' 29,412" S | 100° 28' 46,671" E | 200M Indonesia |
| OCS 921 | 8° 21' 32,881" S | 100° 28' 52,278" E | 200M Indonesia |
| OCS 922 | 8° 21' 46,736" S | 100° 29' 14,737" E | 200M Indonesia |
| OCS 923 | 8° 21' 50,190" S | 100° 29' 20,354" E | 200M Indonesia |
| OCS 924 | 8° 21' 57,085" S | 100° 29' 31,599" E | 200M Indonesia |
| OCS 925 | 8° 22' 0,522" S | 100° 29' 37,224" E | 200M Indonesia |

| Name | Latitude | Longitude | Remark |
|-------------|------------------|--------------------|----------------|
| OCS 926 | 8° 22' 27,989" S | 100° 30' 22,300" E | 200M Indonesia |
| OCS 927 | 8° 22' 31,412" S | 100° 30' 27,934" E | 200M Indonesia |
| OCS 928 | 8° 22' 38,245" S | 100° 30' 39,218" E | 200M Indonesia |
| OCS 929 | 8° 22' 41,653" S | 100° 30' 44,863" E | 200M Indonesia |
| OCS 930 | 8° 22' 55,261" S | 100° 31' 7,474" E | 200M Indonesia |
| OCS 931 | 8° 22' 58,653" S | 100° 31' 13,128" E | 200M Indonesia |
| OCS 932 | 8° 23' 5,425" S | 100° 31' 24,449" E | 200M Indonesia |
| OCS 933 | 8° 23' 8,801" S | 100° 31' 30,112" E | 200M Indonesia |
| OCS 934 | 8° 23' 35,774" S | 100° 32' 15,491" E | 200M Indonesia |
| OCS 935 | 8° 23' 37,545" S | 100° 32' 18,476" E | 200M Indonesia |
| OCS 936 | 8° 23' 41,088" S | 100° 32' 24,455" E | 200M Indonesia |
| OCS 937 | 8° 23' 42,857" S | 100° 32' 27,446" E | 200M Indonesia |
| OCS 938 | 8° 23' 49,929" S | 100° 32' 39,423" E | 200M Indonesia |
| OCS 939 | 8° 23' 51,694" S | 100° 32' 42,417" E | 200M Indonesia |
| OCS 940 | 8° 23' 55,221" S | 100° 32' 48,409" E | 200M Indonesia |
| OCS 941 | 8° 23' 56,980" S | 100° 32' 51,404" E | 200M Indonesia |
| OCS 942 | 8° 24' 11,059" S | 100° 33' 15,405" E | 200M Indonesia |
| OCS 943 | 8° 24' 13,013" S | 100° 33' 18,743" E | 200M Indonesia |
| OCS 944 | 8° 24' 16,919" S | 100° 33' 25,427" E | 200M Indonesia |
| OCS 945 | 8° 24' 18,869" S | 100° 33' 28,769" E | 200M Indonesia |
| OCS 946 | 8° 24' 26,661" S | 100° 33' 42,152" E | 200M Indonesia |
| OCS 947 | 8° 24' 29,037" S | 100° 33' 46,241" E | 200M Indonesia |
| OCS 948 | 8° 24' 33,782" S | 100° 33' 54,427" E | 200M Indonesia |
| OCS 949 | 8° 24' 36,992" S | 100° 33' 59,982" E | 200M Indonesia |
| OCS 950 | 8° 24' 39,114" S | 100° 34' 3,666" E | 200M Indonesia |
| OCS 951 | 8° 24' 44,583" S | 100° 34' 13,173" E | 200M Indonesia |
| OCS 952 | 8° 24' 45,849" S | 100° 34' 15,378" E | 200M Indonesia |
| OCS 953 | 8° 24' 48,379" S | 100° 34' 19,787" E | 200M Indonesia |
| OCS 954 | 8° 24' 49,642" S | 100° 34' 21,991" E | 200M Indonesia |
| OCS 955 | 8° 25' 1,310" S | 100° 34' 42,376" E | 200M Indonesia |
| OCS 956 | 8° 25' 2,765" S | 100° 34' 44,921" E | 200M Indonesia |
| OCS 957 | 8° 25' 5,674" S | 100° 34' 50,019" E | 200M Indonesia |

| Name | Latitude | Longitude | Remark |
|-------------|------------------|--------------------|----------------|
| OCS 958 | 8° 25' 7,127" S | 100° 34' 52,568" E | 200M Indonesia |
| OCS 959 | 8° 25' 12,934" S | 100° 35' 2,772" E | 200M Indonesia |
| OCS 960 | 8° 25' 14,384" S | 100° 35' 5,322" E | 200M Indonesia |
| OCS 961 | 8° 25' 17,279" S | 100° 35' 10,424" E | 200M Indonesia |
| OCS 962 | 8° 25' 18,723" S | 100° 35' 12,973" E | 200M Indonesia |
| OCS 963 | 8° 25' 43,267" S | 100° 35' 56,344" E | 200M Indonesia |
| OCS 964 | 8° 25' 44,797" S | 100° 35' 59,051" E | 200M Indonesia |
| OCS 965 | 8° 25' 47,854" S | 100° 36' 4,471" E | 200M Indonesia |
| OCS 966 | 8° 25' 49,381" S | 100° 36' 7,180" E | 200M Indonesia |
| OCS 967 | 8° 25' 55,486" S | 100° 36' 18,034" E | 200M Indonesia |
| OCS 968 | 8° 25' 57,009" S | 100° 36' 20,747" E | 200M Indonesia |
| OCS 969 | 8° 26' 0,054" S | 100° 36' 26,177" E | 200M Indonesia |
| OCS 970 | 8° 26' 1,574" S | 100° 36' 28,891" E | 200M Indonesia |
| OCS 971 | 8° 26' 13,731" S | 100° 36' 50,636" E | 200M Indonesia |
| OCS 972 | 8° 26' 15,247" S | 100° 36' 53,351" E | 200M Indonesia |
| OCS 973 | 8° 26' 18,277" S | 100° 36' 58,787" E | 200M Indonesia |
| OCS 974 | 8° 26' 19,789" S | 100° 37' 1,504" E | 200M Indonesia |
| OCS 975 | 8° 26' 25,837" S | 100° 37' 12,388" E | 200M Indonesia |
| OCS 976 | 8° 26' 27,346" S | 100° 37' 15,108" E | 200M Indonesia |
| OCS 977 | 8° 26' 30,360" S | 100° 37' 20,548" E | 200M Indonesia |
| OCS 978 | 8° 26' 31,862" S | 100° 37' 23,264" E | 200M Indonesia |
| OCS 979 | 8° 27' 15,113" S | 100° 38' 41,577" E | 200M Indonesia |
| OCS 980 | 8° 27' 16,512" S | 100° 38' 44,115" E | 200M Indonesia |
| OCS 981 | 8° 27' 19,315" S | 100° 38' 49,204" E | 200M Indonesia |
| OCS 982 | 8° 27' 20,714" S | 100° 38' 51,749" E | 200M Indonesia |
| OCS 983 | 8° 27' 26,312" S | 100° 39' 1,944" E | 200M Indonesia |
| OCS 984 | 8° 27' 27,709" S | 100° 39' 4,492" E | 200M Indonesia |
| OCS 985 | 8° 27' 30,502" S | 100° 39' 9,592" E | 200M Indonesia |
| OCS 986 | 8° 27' 31,896" S | 100° 39' 12,142" E | 200M Indonesia |
| OCS 987 | 8° 27' 43,050" S | 100° 39' 32,571" E | 200M Indonesia |
| OCS 988 | 8° 27' 44,441" S | 100° 39' 35,122" E | 200M Indonesia |
| OCS 989 | 8° 27' 47,221" S | 100° 39' 40,230" E | 200M Indonesia |

| Name | Latitude | Longitude | Remark |
|-------------|------------------|--------------------|----------------|
| OCS 990 | 8° 27' 48,610" S | 100° 39' 42,785" E | 200M Indonesia |
| OCS 991 | 8° 27' 54,161" S | 100° 39' 53,010" E | 200M Indonesia |
| OCS 992 | 8° 27' 55,546" S | 100° 39' 55,566" E | 200M Indonesia |
| OCS 993 | 8° 27' 58,314" S | 100° 40' 0,679" E | 200M Indonesia |
| OCS 994 | 8° 27' 59,694" S | 100° 40' 3,234" E | 200M Indonesia |
| OCS 995 | 8° 28' 21,810" S | 100° 40' 44,211" E | 200M Indonesia |
| OCS 996 | 8° 28' 24,565" S | 100° 40' 49,332" E | 200M Indonesia |
| OCS 997 | 8° 28' 30,067" S | 100° 40' 59,586" E | 200M Indonesia |
| OCS 998 | 8° 28' 32,811" S | 100° 41' 4,714" E | 200M Indonesia |
| OCS 999 | 8° 28' 43,769" S | 100° 41' 25,254" E | 200M Indonesia |
| OCS 1000 | 8° 28' 46,501" S | 100° 41' 30,390" E | 200M Indonesia |
| OCS 1001 | 8° 28' 51,953" S | 100° 41' 40,670" E | 200M Indonesia |
| OCS 1002 | 8° 28' 54,671" S | 100° 41' 45,811" E | 200M Indonesia |
| OCS 1003 | 8° 29' 16,391" S | 100° 42' 27,003" E | 200M Indonesia |
| OCS 1004 | 8° 29' 19,098" S | 100° 42' 32,151" E | 200M Indonesia |
| OCS 1005 | 8° 29' 24,501" S | 100° 42' 42,458" E | 200M Indonesia |
| OCS 1006 | 8° 29' 27,195" S | 100° 42' 47,614" E | 200M Indonesia |
| OCS 1007 | 8° 29' 37,954" S | 100° 43' 8,260" E | 200M Indonesia |
| OCS 1008 | 8° 29' 40,637" S | 100° 43' 13,423" E | 200M Indonesia |
| OCS 1009 | 8° 29' 45,990" S | 100° 43' 23,756" E | 200M Indonesia |
| OCS 1010 | 8° 29' 48,659" S | 100° 43' 28,923" E | 200M Indonesia |
| OCS 1011 | 8° 30' 9,981" S | 100° 44' 10,326" E | 200M Indonesia |
| OCS 1012 | 8° 30' 12,637" S | 100° 44' 15,500" E | 200M Indonesia |
| OCS 1013 | 8° 30' 17,940" S | 100° 44' 25,859" E | 200M Indonesia |
| OCS 1014 | 8° 30' 20,585" S | 100° 44' 31,041" E | 200M Indonesia |
| OCS 1015 | 8° 30' 31,145" S | 100° 44' 51,792" E | 200M Indonesia |
| OCS 1016 | 8° 30' 33,777" S | 100° 44' 56,980" E | 200M Indonesia |
| OCS 1017 | 8° 30' 39,031" S | 100° 45' 7,366" E | 200M Indonesia |
| OCS 1018 | 8° 30' 41,650" S | 100° 45' 12,559" E | 200M Indonesia |
| OCS 1019 | 8° 31' 2,572" S | 100° 45' 54,169" E | 200M Indonesia |
| OCS 1020 | 8° 31' 5,178" S | 100° 45' 59,368" E | 200M Indonesia |
| OCS 1021 | 8° 31' 10,381" S | 100° 46' 9,779" E | 200M Indonesia |

| Name | Latitude | Longitude | Remark |
|-------------|------------------|--------------------|----------------------------|
| OCS 1022 | 8° 31' 12,976" S | 100° 46' 14,986" E | 200M Indonesia |
| OCS 1023 | 8° 31' 23,335" S | 100° 46' 35,839" E | 200M Indonesia |
| OCS 1024 | 8° 31' 25,918" S | 100° 46' 41,053" E | 200M Indonesia |
| OCS 1025 | 8° 31' 31,071" S | 100° 46' 51,490" E | 200M Indonesia |
| OCS 1026 | 8° 31' 33,640" S | 100° 46' 56,708" E | 200M Indonesia |
| OCS 1027 | 8° 31' 54,160" S | 100° 47' 38,521" E | 200M Indonesia |
| OCS 1028 | 8° 31' 56,716" S | 100° 47' 43,746" E | 200M Indonesia |
| OCS 1029 | 8° 32' 1,819" S | 100° 47' 54,208" E | 200M Indonesia |
| OCS 1030 | 8° 32' 4,364" S | 100° 47' 59,440" E | 200M Indonesia |
| OCS 1031 | 8° 32' 14,522" S | 100° 48' 20,394" E | 200M Indonesia |
| OCS 1032 | 8° 32' 17,053" S | 100° 48' 25,633" E | 200M Indonesia |
| OCS 1033 | 8° 32' 22,106" S | 100° 48' 36,119" E | 200M Indonesia |
| OCS 1034 | 8° 32' 24,624" S | 100° 48' 41,362" E | 200M Indonesia |
| OCS 1035 | 8° 32' 44,740" S | 100° 49' 23,374" E | 200M Indonesia |
| OCS 1036 | 8° 32' 47,246" S | 100° 49' 28,624" E | 200M Indonesia |
| OCS 1037 | 8° 32' 52,248" S | 100° 49' 39,135" E | 200M Indonesia |
| OCS 1038 | 8° 32' 54,742" S | 100° 49' 44,392" E | 200M Indonesia |
| OCS 1039 | 8° 33' 4,698" S | 100° 50' 5,445" E | 200M Indonesia |
| OCS 1040 | 8° 33' 7,179" S | 100° 50' 10,708" E | 200M Indonesia |
| OCS 1041 | 8° 33' 12,130" S | 100° 50' 21,243" E | 200M Indonesia |
| OCS 1042 | 8° 33' 14,598" S | 100° 50' 26,511" E | 200M Indonesia |
| OCS 1043 | 8° 33' 19,722" S | 100° 50' 37,730" E | FOS + 60M / 200M Indonesia |
| OCS 1044 | 8° 34' 4,549" S | 100° 50' 6,509" E | FOS + 60M |
| OCS 1045 | 8° 35' 22,569" S | 100° 49' 9,001" E | FOS + 60M |
| OCS 1046 | 8° 36' 39,028" S | 100° 48' 9,411" E | FOS + 60M |
| OCS 1047 | 8° 37' 53,872" S | 100° 47' 7,782" E | FOS + 60M |
| OCS 1048 | 8° 39' 7,047" S | 100° 46' 4,159" E | FOS + 60M |
| OCS 1049 | 8° 40' 18,500" S | 100° 44' 58,586" E | FOS + 60M |
| OCS 1050 | 8° 41' 28,180" S | 100° 43' 51,110" E | FOS + 60M |
| OCS 1051 | 8° 42' 36,037" S | 100° 42' 41,780" E | FOS + 60M |
| OCS 1052 | 8° 43' 42,022" S | 100° 41' 30,644" E | FOS + 60M |
| OCS 1053 | 8° 44' 46,088" S | 100° 40' 17,754" E | FOS + 60M |

| Name | Latitude | Longitude | Remark |
|-------------|------------------|--------------------|---------------|
| OCS 1054 | 8° 45' 48,188" S | 100° 39' 3,163" E | FOS + 60M |
| OCS 1055 | 8° 46' 48,278" S | 100° 37' 46,922" E | FOS + 60M |
| OCS 1056 | 8° 47' 46,315" S | 100° 36' 29,088" E | FOS + 60M |
| OCS 1057 | 8° 48' 42,258" S | 100° 35' 9,715" E | FOS + 60M |
| OCS 1058 | 8° 49' 36,065" S | 100° 33' 48,860" E | FOS + 60M |
| OCS 1059 | 8° 50' 27,697" S | 100° 32' 26,583" E | FOS + 60M |
| OCS 1060 | 8° 51' 17,119" S | 100° 31' 2,941" E | FOS + 60M |
| OCS 1061 | 8° 51' 18,211" S | 100° 31' 0,974" E | FOS + 60M |
| OCS 1062 | 8° 52' 14,847" S | 100° 29' 59,898" E | FOS + 60M |
| OCS 1063 | 8° 53' 18,914" S | 100° 28' 46,982" E | FOS + 60M |
| OCS 1064 | 8° 54' 21,016" S | 100° 27' 32,364" E | FOS + 60M |
| OCS 1065 | 8° 55' 21,108" S | 100° 26' 16,096" E | FOS + 60M |
| OCS 1066 | 8° 56' 19,147" S | 100° 24' 58,233" E | FOS + 60M |
| OCS 1067 | 8° 57' 15,090" S | 100° 23' 38,831" E | FOS + 60M |
| OCS 1068 | 8° 58' 8,899" S | 100° 22' 17,946" E | FOS + 60M |
| OCS 1069 | 8° 59' 0,533" S | 100° 20' 55,638" E | FOS + 60M |
| OCS 1070 | 8° 59' 49,957" S | 100° 19' 31,965" E | FOS + 60M |
| OCS 1071 | 9° 0' 37,133" S | 100° 18' 6,986" E | FOS + 60M |
| OCS 1072 | 9° 1' 22,029" S | 100° 16' 40,764" E | FOS + 60M |
| OCS 1073 | 9° 2' 4,612" S | 100° 15' 13,359" E | FOS + 60M |
| OCS 1074 | 9° 2' 44,852" S | 100° 13' 44,835" E | FOS + 60M |
| OCS 1075 | 9° 3' 22,718" S | 100° 12' 15,256" E | FOS + 60M |
| OCS 1076 | 9° 3' 56,308" S | 100° 10' 49,479" E | FOS + 60M |
| OCS 1077 | 9° 4' 58,009" S | 100° 10' 8,875" E | FOS + 60M |
| OCS 1078 | 9° 6' 17,538" S | 100° 9' 13,419" E | FOS + 60M |
| OCS 1079 | 9° 7' 35,563" S | 100° 8' 15,838" E | FOS + 60M |
| OCS 1080 | 9° 8' 52,028" S | 100° 7' 16,172" E | FOS + 60M |
| OCS 1081 | 9° 10' 6,878" S | 100° 6' 14,463" E | FOS + 60M |
| OCS 1082 | 9° 11' 20,059" S | 100° 5' 10,756" E | FOS + 60M |
| OCS 1083 | 9° 12' 31,518" S | 100° 4' 5,096" E | FOS + 60M |
| OCS 1084 | 9° 12' 49,283" S | 100° 3' 47,871" E | FOS + 60M |
| OCS 1085 | 9° 14' 11,971" S | 100° 3' 13,485" E | FOS + 60M |

| Name | Latitude | Longitude | Remark |
|-------------|------------------|-------------------|---------------|
| OCS 1086 | 9° 15' 40,379" S | 100° 2' 33,897" E | FOS + 60M |
| OCS 1087 | 9° 17' 7,703" S | 100° 1' 51,940" E | FOS + 60M |
| OCS 1088 | 9° 18' 33,880" S | 100° 1' 7,641" E | FOS + 60M |
| OCS 1089 | 9° 19' 58,848" S | 100° 0' 21,034" E | FOS + 60M |
| OCS 1090 | 9° 21' 22,546" S | 99° 59' 32,150" E | FOS + 60M |
| OCS 1091 | 9° 22' 30,711" S | 99° 58' 49,840" E | FOS + 60M |
| OCS 1092 | 9° 22' 38,588" S | 99° 58' 49,492" E | FOS + 60M |
| OCS 1093 | 9° 24' 15,108" S | 99° 58' 42,612" E | FOS + 60M |
| OCS 1094 | 9° 25' 51,410" S | 99° 58' 33,136" E | FOS + 60M |
| OCS 1095 | 9° 27' 27,425" S | 99° 58' 21,069" E | FOS + 60M |
| OCS 1096 | 9° 29' 3,086" S | 99° 58' 6,420" E | FOS + 60M |
| OCS 1097 | 9° 30' 38,324" S | 99° 57' 49,198" E | FOS + 60M |
| OCS 1098 | 9° 32' 13,070" S | 99° 57' 29,414" E | FOS + 60M |
| OCS 1099 | 9° 33' 47,257" S | 99° 57' 7,084" E | FOS + 60M |
| OCS 1100 | 9° 35' 20,817" S | 99° 56' 42,221" E | FOS + 60M |
| OCS 1101 | 9° 36' 53,683" S | 99° 56' 14,844" E | FOS + 60M |
| OCS 1102 | 9° 38' 25,790" S | 99° 55' 44,970" E | FOS + 60M |
| OCS 1103 | 9° 39' 57,069" S | 99° 55' 12,622" E | FOS + 60M |
| OCS 1104 | 9° 41' 27,457" S | 99° 54' 37,821" E | FOS + 60M |
| OCS 1105 | 9° 42' 56,889" S | 99° 54' 0,593" E | FOS + 60M |
| OCS 1106 | 9° 44' 25,300" S | 99° 53' 20,962" E | FOS + 60M |
| OCS 1107 | 9° 45' 52,627" S | 99° 52' 38,958" E | FOS + 60M |
| OCS 1108 | 9° 45' 57,112" S | 99° 52' 36,650" E | FOS + 60M |
| OCS 1109 | 9° 46' 37,751" S | 99° 52' 29,298" E | FOS + 60M |
| OCS 1110 | 9° 48' 12,498" S | 99° 52' 9,507" E | FOS + 60M |
| OCS 1111 | 9° 49' 46,685" S | 99° 51' 47,167" E | FOS + 60M |
| OCS 1112 | 9° 51' 20,245" S | 99° 51' 22,292" E | FOS + 60M |
| OCS 1113 | 9° 52' 53,112" S | 99° 50' 54,900" E | FOS + 60M |
| OCS 1114 | 9° 54' 25,219" S | 99° 50' 25,011" E | FOS + 60M |
| OCS 1115 | 9° 55' 56,500" S | 99° 49' 52,644" E | FOS + 60M |
| OCS 1116 | 9° 57' 26,890" S | 99° 49' 17,822" E | FOS + 60M |
| OCS 1117 | 9° 58' 56,323" S | 99° 48' 40,571" E | FOS + 60M |

| Name | Latitude | Longitude | Remark |
|-------------|------------------|-------------------|-------------------------------|
| OCS 1118 | 10° 0' 24,735" S | 99° 48' 0,916" E | FOS + 60M |
| OCS 1119 | 10° 1' 31,676" S | 99° 47' 28,697" E | FOS + 60M |
| OCS 1120 | 10° 1' 43,771" S | 99° 47' 26,844" E | FOS + 60M |
| OCS 1121 | 10° 3' 19,008" S | 99° 47' 9,609" E | FOS + 60M |
| OCS 1122 | 10° 4' 53,755" S | 99° 46' 49,810" E | FOS + 60M |
| OCS 1123 | 10° 6' 27,942" S | 99° 46' 27,458" E | FOS + 60M |
| OCS 1124 | 10° 8' 1,503" S | 99° 46' 2,571" E | FOS + 60M |
| OCS 1125 | 10° 8' 33,083" S | 99° 45' 53,251" E | 200M Cocos Island / FOS + 60M |
| OCS 1126 | 10° 8' 14,722" S | 99° 45' 42,460" E | 200M Cocos Island |
| OCS 1127 | 10° 7' 56,710" S | 99° 45' 31,768" E | 200M Cocos Island |
| OCS 1128 | 10° 7' 20,775" S | 99° 45' 10,226" E | 200M Cocos Island |
| OCS 1129 | 10° 7' 2,858" S | 99° 44' 59,380" E | 200M Cocos Island |
| OCS 1130 | 10° 5' 55,830" S | 99° 44' 18,407" E | 200M Cocos Island |
| OCS 1131 | 10° 5' 39,111" S | 99° 44' 8,095" E | 200M Cocos Island |
| OCS 1132 | 10° 5' 5,748" S | 99° 43' 47,328" E | 200M Cocos Island |
| OCS 1133 | 10° 4' 49,116" S | 99° 43' 36,882" E | 200M Cocos Island |
| OCS 1134 | 10° 2' 48,000" S | 99° 42' 20,133" E | 200M Cocos Island |
| OCS 1135 | 10° 2' 32,686" S | 99° 42' 10,350" E | 200M Cocos Island |
| OCS 1136 | 10° 2' 2,115" S | 99° 41' 50,657" E | 200M Cocos Island |
| OCS 1137 | 10° 1' 46,870" S | 99° 41' 40,756" E | 200M Cocos Island |
| OCS 1138 | 10° 0' 46,007" S | 99° 41' 0,903" E | 200M Cocos Island |
| OCS 1139 | 10° 0' 30,837" S | 99° 40' 50,888" E | 200M Cocos Island |
| OCS 1140 | 10° 0' 0,564" S | 99° 40' 30,740" E | 200M Cocos Island |
| OCS 1141 | 9° 59' 45,474" S | 99° 40' 20,615" E | 200M Cocos Island |
| OCS 1142 | 9° 57' 16,210" S | 99° 38' 39,660" E | 200M Cocos Island |
| OCS 1143 | 9° 56' 59,357" S | 99° 38' 28,195" E | 200M Cocos Island |
| OCS 1144 | 9° 56' 31,292" S | 99° 38' 8,988" E | 200M Cocos Island |
| OCS 1145 | 9° 56' 14,486" S | 99° 37' 57,416" E | 200M Cocos Island |
| OCS 1146 | 9° 55' 51,647" S | 99° 37' 41,595" E | 200M Cocos Island |
| OCS 1147 | 9° 55' 31,390" S | 99° 37' 27,462" E | 200M Cocos Island |
| OCS 1148 | 9° 54' 57,707" S | 99° 37' 3,793" E | 200M Cocos Island |
| OCS 1149 | 9° 54' 37,561" S | 99° 36' 49,534" E | 200M Cocos Island |

| Name | Latitude | Longitude | Remark |
|-------------|------------------|-------------------|-------------------|
| OCS 1150 | 9° 52' 20,730" S | 99° 35' 12,013" E | 200M Cocos Island |
| OCS 1151 | 9° 52' 2,658" S | 99° 34' 59,008" E | 200M Cocos Island |
| OCS 1152 | 9° 51' 26,616" S | 99° 34' 32,819" E | 200M Cocos Island |
| OCS 1153 | 9° 51' 8,659" S | 99° 34' 19,645" E | 200M Cocos Island |
| OCS 1154 | 9° 49' 57,038" S | 99° 33' 26,597" E | 200M Cocos Island |
| OCS 1155 | 9° 49' 39,202" S | 99° 33' 13,260" E | 200M Cocos Island |
| OCS 1156 | 9° 49' 3,643" S | 99° 32' 46,415" E | 200M Cocos Island |
| OCS 1157 | 9° 48' 45,935" S | 99° 32' 32,918" E | 200M Cocos Island |
| OCS 1158 | 9° 46' 8,607" S | 99° 30' 31,882" E | 200M Cocos Island |
| OCS 1159 | 9° 45' 58,637" S | 99° 30' 24,172" E | 200M Cocos Island |
| OCS 1160 | 9° 45' 38,713" S | 99° 30' 8,681" E | 200M Cocos Island |
| OCS 1161 | 9° 45' 28,774" S | 99° 30' 0,912" E | 200M Cocos Island |
| OCS 1162 | 9° 44' 49,067" S | 99° 29' 29,709" E | 200M Cocos Island |
| OCS 1163 | 9° 44' 39,165" S | 99° 29' 21,887" E | 200M Cocos Island |
| OCS 1164 | 9° 44' 19,397" S | 99° 29' 6,186" E | 200M Cocos Island |
| OCS 1165 | 9° 44' 9,538" S | 99° 28' 58,314" E | 200M Cocos Island |
| OCS 1166 | 9° 42' 50,752" S | 99° 27' 55,073" E | 200M Cocos Island |
| OCS 1167 | 9° 42' 40,931" S | 99° 27' 47,149" E | 200M Cocos Island |
| OCS 1168 | 9° 42' 21,320" S | 99° 27' 31,240" E | 200M Cocos Island |
| OCS 1169 | 9° 42' 11,538" S | 99° 27' 23,263" E | 200M Cocos Island |
| OCS 1170 | 9° 41' 32,470" S | 99° 26' 51,234" E | 200M Cocos Island |
| OCS 1171 | 9° 41' 22,727" S | 99° 26' 43,204" E | 200M Cocos Island |
| OCS 1172 | 9° 41' 3,276" S | 99° 26' 27,089" E | 200M Cocos Island |
| OCS 1173 | 9° 40' 52,989" S | 99° 26' 18,518" E | 200M Cocos Island |
| OCS 1174 | 9° 40' 38,309" S | 99° 26' 6,213" E | 200M Cocos Island |
| OCS 1175 | 9° 40' 17,281" S | 99° 25' 48,502" E | 200M Cocos Island |
| OCS 1176 | 9° 39' 47,163" S | 99° 25' 22,997" E | 200M Cocos Island |
| OCS 1177 | 9° 39' 35,743" S | 99° 25' 13,290" E | 200M Cocos Island |
| OCS 1178 | 9° 39' 26,565" S | 99° 25' 5,448" E | 200M Cocos Island |
| OCS 1179 | 9° 39' 9,533" S | 99° 24' 50,820" E | 200M Cocos Island |
| OCS 1180 | 9° 39' 1,033" S | 99° 24' 43,487" E | 200M Cocos Island |
| OCS 1181 | 9° 38' 30,478" S | 99° 24' 16,990" E | 200M Cocos Island |

| Name | Latitude | Longitude | Remark |
|-------------|------------------|-------------------|-------------------|
| OCS 1182 | 9° 38' 10,176" S | 99° 23' 59,259" E | 200M Cocos Island |
| OCS 1183 | 9° 37' 16,230" S | 99° 23' 11,800" E | 200M Cocos Island |
| OCS 1184 | 9° 36' 58,440" S | 99° 22' 56,047" E | 200M Cocos Island |
| OCS 1185 | 9° 36' 28,867" S | 99° 22' 29,686" E | 200M Cocos Island |
| OCS 1186 | 9° 36' 11,180" S | 99° 22' 13,818" E | 200M Cocos Island |
| OCS 1187 | 9° 35' 7,329" S | 99° 21' 16,162" E | 200M Cocos Island |
| OCS 1188 | 9° 34' 54,338" S | 99° 21' 4,375" E | 200M Cocos Island |
| OCS 1189 | 9° 34' 32,722" S | 99° 20' 44,667" E | 200M Cocos Island |
| OCS 1190 | 9° 34' 19,784" S | 99° 20' 32,815" E | 200M Cocos Island |
| OCS 1191 | 9° 33' 41,035" S | 99° 19' 57,146" E | 200M Cocos Island |
| OCS 1192 | 9° 33' 28,151" S | 99° 19' 45,230" E | 200M Cocos Island |
| OCS 1193 | 9° 33' 6,720" S | 99° 19' 25,312" E | 200M Cocos Island |
| OCS 1194 | 9° 32' 53,892" S | 99° 19' 13,333" E | 200M Cocos Island |
| OCS 1195 | 9° 32' 27,246" S | 99° 18' 48,328" E | 200M Cocos Island |
| OCS 1196 | 9° 32' 12,472" S | 99° 18' 34,388" E | 200M Cocos Island |
| OCS 1197 | 9° 31' 47,909" S | 99° 18' 11,082" E | 200M Cocos Island |
| OCS 1198 | 9° 31' 33,215" S | 99° 17' 57,061" E | 200M Cocos Island |
| OCS 1199 | 9° 30' 49,233" S | 99° 17' 14,866" E | 200M Cocos Island |
| OCS 1200 | 9° 30' 34,633" S | 99° 17' 0,780" E | 200M Cocos Island |
| OCS 1201 | 9° 30' 10,360" S | 99° 16' 37,234" E | 200M Cocos Island |
| OCS 1202 | 9° 29' 55,864" S | 99° 16' 23,094" E | 200M Cocos Island |
| OCS 1203 | 9° 29' 23,770" S | 99° 15' 51,622" E | 200M Cocos Island |
| OCS 1204 | 9° 28' 42,027" S | 99° 15' 10,996" E | 200M Cocos Island |
| OCS 1205 | 9° 28' 29,381" S | 99° 14' 58,599" E | 200M Cocos Island |
| OCS 1206 | 9° 28' 4,167" S | 99° 14' 33,700" E | 200M Cocos Island |
| OCS 1207 | 9° 27' 51,611" S | 99° 14' 21,212" E | 200M Cocos Island |
| OCS 1208 | 9° 26' 11,405" S | 99° 12' 40,822" E | 200M Cocos Island |
| OCS 1209 | 9° 25' 58,933" S | 99° 12' 28,237" E | 200M Cocos Island |
| OCS 1210 | 9° 25' 34,067" S | 99° 12' 2,963" E | 200M Cocos Island |
| OCS 1211 | 9° 25' 21,683" S | 99° 11' 50,284" E | 200M Cocos Island |
| OCS 1212 | 9° 24' 32,305" S | 99° 10' 59,362" E | 200M Cocos Island |
| OCS 1213 | 9° 24' 20,009" S | 99° 10' 46,590" E | 200M Cocos Island |

| Name | Latitude | Longitude | Remark |
|-------------|------------------|-------------------|-------------------|
| OCS 1214 | 9° 23' 55,505" S | 99° 10' 20,950" E | 200M Cocos Island |
| OCS 1215 | 9° 23' 43,300" S | 99° 10' 8,086" E | 200M Cocos Island |
| OCS 1216 | 9° 23' 29,289" S | 99° 9' 53,211" E | 200M Cocos Island |
| OCS 1217 | 9° 23' 22,745" S | 99° 9' 46,235" E | 200M Cocos Island |
| OCS 1218 | 9° 23' 9,682" S | 99° 9' 32,256" E | 200M Cocos Island |
| OCS 1219 | 9° 23' 3,166" S | 99° 9' 25,256" E | 200M Cocos Island |
| OCS 1220 | 9° 22' 46,497" S | 99° 9' 4,190" E | 200M Cocos Island |
| OCS 1221 | 9° 22' 38,584" S | 99° 8' 55,811" E | 200M Cocos Island |
| OCS 1222 | 9° 22' 32,027" S | 99° 8' 48,853" E | 200M Cocos Island |
| OCS 1223 | 9° 22' 18,923" S | 99° 8' 34,922" E | 200M Cocos Island |
| OCS 1224 | 9° 22' 12,381" S | 99° 8' 27,954" E | 200M Cocos Island |
| OCS 1225 | 9° 21' 20,062" S | 99° 7' 32,115" E | 200M Cocos Island |
| OCS 1226 | 9° 21' 13,536" S | 99° 7' 25,137" E | 200M Cocos Island |
| OCS 1227 | 9° 21' 0,490" S | 99° 7' 11,159" E | 200M Cocos Island |
| OCS 1228 | 9° 20' 54,046" S | 99° 7' 4,106" E | 200M Cocos Island |
| OCS 1229 | 9° 20' 28,722" S | 99° 6' 35,429" E | 200M Cocos Island |
| OCS 1230 | 9° 20' 22,403" S | 99° 6' 28,259" E | 200M Cocos Island |
| OCS 1231 | 9° 20' 9,775" S | 99° 6' 13,902" E | 200M Cocos Island |
| OCS 1232 | 9° 20' 3,474" S | 99° 6' 6,725" E | 200M Cocos Island |
| OCS 1233 | 9° 19' 52,273" S | 99° 5' 53,941" E | 200M Cocos Island |
| OCS 1234 | 9° 18' 26,348" S | 99° 4' 17,958" E | 200M Cocos Island |
| OCS 1235 | 9° 18' 19,463" S | 99° 4' 10,143" E | 200M Cocos Island |
| OCS 1236 | 9° 18' 5,714" S | 99° 3' 54,469" E | 200M Cocos Island |
| OCS 1237 | 9° 17' 58,858" S | 99° 3' 46,618" E | 200M Cocos Island |
| OCS 1238 | 9° 17' 31,480" S | 99° 3' 15,137" E | 200M Cocos Island |
| OCS 1239 | 9° 17' 24,656" S | 99° 3' 7,257" E | 200M Cocos Island |
| OCS 1240 | 9° 17' 11,038" S | 99° 2' 51,462" E | 200M Cocos Island |
| OCS 1241 | 9° 17' 4,249" S | 99° 2' 43,554" E | 200M Cocos Island |
| OCS 1242 | 9° 16' 10,019" S | 99° 1' 40,113" E | 200M Cocos Island |
| OCS 1243 | 9° 16' 3,399" S | 99° 1' 32,337" E | 200M Cocos Island |
| OCS 1244 | 9° 15' 50,185" S | 99° 1' 16,747" E | 200M Cocos Island |
| OCS 1245 | 9° 15' 43,595" S | 99° 1' 8,941" E | 200M Cocos Island |

| Name | Latitude | Longitude | Remark |
|-------------|------------------|-------------------|-------------------|
| OCS 1246 | 9° 15' 17,303" S | 99° 0' 37,659" E | 200M Cocos Island |
| OCS 1247 | 9° 15' 11,185" S | 99° 0' 30,352" E | 200M Cocos Island |
| OCS 1248 | 9° 14' 58,109" S | 99° 0' 14,668" E | 200M Cocos Island |
| OCS 1249 | 9° 14' 51,942" S | 99° 0' 7,233" E | 200M Cocos Island |
| OCS 1250 | 9° 14' 41,028" S | 98° 59' 54,021" E | 200M Cocos Island |
| OCS 1251 | 9° 14' 31,850" S | 98° 59' 42,842" E | 200M Cocos Island |
| OCS 1252 | 9° 14' 14,046" S | 98° 59' 21,026" E | 200M Cocos Island |
| OCS 1253 | 9° 14' 5,178" S | 98° 59' 10,095" E | 200M Cocos Island |
| OCS 1254 | 9° 13' 29,895" S | 98° 58' 26,348" E | 200M Cocos Island |
| OCS 1255 | 9° 13' 21,110" S | 98° 58' 15,392" E | 200M Cocos Island |
| OCS 1256 | 9° 13' 3,599" S | 98° 57' 53,423" E | 200M Cocos Island |
| OCS 1257 | 9° 12' 54,879" S | 98° 57' 42,419" E | 200M Cocos Island |
| OCS 1258 | 9° 11' 46,336" S | 98° 56' 15,415" E | 200M Cocos Island |
| OCS 1259 | 9° 11' 37,806" S | 98° 56' 4,525" E | 200M Cocos Island |
| OCS 1260 | 9° 11' 20,800" S | 98° 55' 42,686" E | 200M Cocos Island |
| OCS 1261 | 9° 11' 12,329" S | 98° 55' 31,746" E | 200M Cocos Island |
| OCS 1262 | 9° 10' 38,554" S | 98° 54' 47,864" E | 200M Cocos Island |
| OCS 1263 | 9° 10' 30,148" S | 98° 54' 36,878" E | 200M Cocos Island |
| OCS 1264 | 9° 10' 13,393" S | 98° 54' 14,853" E | 200M Cocos Island |
| OCS 1265 | 9° 10' 5,055" S | 98° 54' 3,828" E | 200M Cocos Island |
| OCS 1266 | 9° 7' 58,088" S | 98° 51' 14,980" E | 200M Cocos Island |
| OCS 1267 | 9° 7' 42,381" S | 98° 50' 53,859" E | 200M Cocos Island |
| OCS 1268 | 9° 7' 11,177" S | 98° 50' 11,425" E | 200M Cocos Island |
| OCS 1269 | 9° 6' 55,694" S | 98° 49' 50,130" E | 200M Cocos Island |
| OCS 1270 | 9° 5' 54,189" S | 98° 48' 24,575" E | 200M Cocos Island |
| OCS 1271 | 9° 5' 38,934" S | 98° 48' 3,114" E | 200M Cocos Island |
| OCS 1272 | 9° 5' 8,649" S | 98° 47' 20,016" E | 200M Cocos Island |
| OCS 1273 | 9° 4' 53,630" S | 98° 46' 58,396" E | 200M Cocos Island |
| OCS 1274 | 9° 2' 54,325" S | 98° 44' 4,696" E | 200M Cocos Island |
| OCS 1275 | 9° 2' 39,537" S | 98° 43' 42,918" E | 200M Cocos Island |
| OCS 1276 | 9° 2' 10,181" S | 98° 42' 59,181" E | 200M Cocos Island |
| OCS 1277 | 9° 1' 55,624" S | 98° 42' 37,239" E | 200M Cocos Island |

| Name | Latitude | Longitude | Remark |
|-------------|------------------|-------------------|-------------------|
| OCS 1278 | 9° 0' 57,840" S | 98° 41' 9,116" E | 200M Cocos Island |
| OCS 1279 | 9° 0' 43,519" S | 98° 40' 47,019" E | 200M Cocos Island |
| OCS 1280 | 9° 0' 15,107" S | 98° 40' 2,658" E | 200M Cocos Island |
| OCS 1281 | 9° 0' 1,029" S | 98° 39' 40,412" E | 200M Cocos Island |
| OCS 1282 | 8° 58' 8,981" S | 98° 36' 41,271" E | 200M Cocos Island |
| OCS 1283 | 8° 58' 2,203" S | 98° 36' 30,374" E | 200M Cocos Island |
| OCS 1284 | 8° 57' 48,690" S | 98° 36' 8,519" E | 200M Cocos Island |
| OCS 1285 | 8° 57' 41,964" S | 98° 35' 57,577" E | 200M Cocos Island |
| OCS 1286 | 8° 57' 15,153" S | 98° 35' 13,701" E | 200M Cocos Island |
| OCS 1287 | 8° 57' 8,482" S | 98° 35' 2,720" E | 200M Cocos Island |
| OCS 1288 | 8° 56' 55,195" S | 98° 34' 40,718" E | 200M Cocos Island |
| OCS 1289 | 8° 56' 48,584" S | 98° 34' 29,705" E | 200M Cocos Island |
| OCS 1290 | 8° 55' 55,869" S | 98° 33' 1,376" E | 200M Cocos Island |
| OCS 1291 | 8° 55' 49,659" S | 98° 32' 50,912" E | 200M Cocos Island |
| OCS 1292 | 8° 55' 37,283" S | 98° 32' 29,941" E | 200M Cocos Island |
| OCS 1293 | 8° 55' 31,123" S | 98° 32' 19,442" E | 200M Cocos Island |
| OCS 1294 | 8° 55' 6,574" S | 98° 31' 37,365" E | 200M Cocos Island |
| OCS 1295 | 8° 55' 1,107" S | 98° 31' 27,947" E | 200M Cocos Island |
| OCS 1296 | 8° 54' 48,101" S | 98° 31' 5,411" E | 200M Cocos Island |
| OCS 1297 | 8° 54' 37,215" S | 98° 30' 46,294" E | 200M Cocos Island |
| OCS 1298 | 8° 54' 22,158" S | 98° 30' 19,562" E | 200M Cocos Island |
| OCS 1299 | 8° 54' 14,673" S | 98° 30' 6,175" E | 200M Cocos Island |
| OCS 1300 | 8° 53' 47,392" S | 98° 29' 17,023" E | 200M Cocos Island |
| OCS 1301 | 8° 53' 40,610" S | 98° 29' 4,721" E | 200M Cocos Island |
| OCS 1302 | 8° 53' 27,114" S | 98° 28' 40,073" E | 200M Cocos Island |
| OCS 1303 | 8° 53' 20,404" S | 98° 28' 27,736" E | 200M Cocos Island |
| OCS 1304 | 8° 52' 29,557" S | 98° 26' 53,602" E | 200M Cocos Island |
| OCS 1305 | 8° 52' 23,239" S | 98° 26' 41,831" E | 200M Cocos Island |
| OCS 1306 | 8° 52' 10,661" S | 98° 26' 18,240" E | 200M Cocos Island |
| OCS 1307 | 8° 52' 4,406" S | 98° 26' 6,430" E | 200M Cocos Island |
| OCS 1308 | 8° 51' 39,501" S | 98° 25' 19,099" E | 200M Cocos Island |
| OCS 1309 | 8° 51' 33,311" S | 98° 25' 7,258" E | 200M Cocos Island |

| Name | Latitude | Longitude | Remark |
|-------------|------------------|-------------------|-------------------|
| OCS 1310 | 8° 51' 20,994" S | 98° 24' 43,537" E | 200M Cocos Island |
| OCS 1311 | 8° 51' 14,875" S | 98° 24' 31,673" E | 200M Cocos Island |
| OCS 1312 | 8° 49' 38,862" S | 98° 21' 24,309" E | 200M Cocos Island |
| OCS 1313 | 8° 49' 27,314" S | 98° 21' 1,484" E | 200M Cocos Island |
| OCS 1314 | 8° 49' 4,444" S | 98° 20' 15,688" E | 200M Cocos Island |
| OCS 1315 | 8° 48' 53,132" S | 98° 19' 52,736" E | 200M Cocos Island |
| OCS 1316 | 8° 48' 8,339" S | 98° 18' 20,650" E | 200M Cocos Island |
| OCS 1317 | 8° 47' 57,267" S | 98° 17' 57,581" E | 200M Cocos Island |
| OCS 1318 | 8° 47' 35,357" S | 98° 17' 11,316" E | 200M Cocos Island |
| OCS 1319 | 8° 47' 24,528" S | 98° 16' 48,138" E | 200M Cocos Island |
| OCS 1320 | 8° 45' 58,805" S | 98° 13' 42,151" E | 200M Cocos Island |
| OCS 1321 | 8° 45' 48,217" S | 98° 13' 18,863" E | 200M Cocos Island |
| OCS 1322 | 8° 45' 27,273" S | 98° 12' 32,153" E | 200M Cocos Island |
| OCS 1323 | 8° 45' 16,926" S | 98° 12' 8,749" E | 200M Cocos Island |
| OCS 1324 | 8° 44' 36,006" S | 98° 10' 34,873" E | 200M Cocos Island |
| OCS 1325 | 8° 44' 25,903" S | 98° 10' 11,362" E | 200M Cocos Island |
| OCS 1326 | 8° 44' 5,939" S | 98° 9' 24,223" E | 200M Cocos Island |
| OCS 1327 | 8° 43' 56,085" S | 98° 9' 0,615" E | 200M Cocos Island |
| OCS 1328 | 8° 42' 36,050" S | 98° 5' 46,039" E | 200M Cocos Island |
| OCS 1329 | 8° 42' 30,776" S | 98° 5' 33,114" E | 200M Cocos Island |
| OCS 1330 | 8° 42' 20,290" S | 98° 5' 7,207" E | 200M Cocos Island |
| OCS 1331 | 8° 42' 15,085" S | 98° 4' 54,242" E | 200M Cocos Island |
| OCS 1332 | 8° 41' 54,398" S | 98° 4' 2,284" E | 200M Cocos Island |
| OCS 1333 | 8° 41' 49,266" S | 98° 3' 49,286" E | 200M Cocos Island |
| OCS 1334 | 8° 41' 39,073" S | 98° 3' 23,255" E | 200M Cocos Island |
| OCS 1335 | 8° 41' 34,016" S | 98° 3' 10,232" E | 200M Cocos Island |
| OCS 1336 | 8° 40' 53,819" S | 98° 1' 25,831" E | 200M Cocos Island |
| OCS 1337 | 8° 40' 48,998" S | 98° 1' 13,208" E | 200M Cocos Island |
| OCS 1338 | 8° 40' 39,421" S | 98° 0' 47,922" E | 200M Cocos Island |
| OCS 1339 | 8° 40' 34,669" S | 98° 0' 35,269" E | 200M Cocos Island |
| OCS 1340 | 8° 40' 15,789" S | 97° 59' 44,578" E | 200M Cocos Island |
| OCS 1341 | 8° 40' 11,404" S | 97° 59' 32,711" E | 200M Cocos Island |

| Name | Latitude | Longitude | Remark |
|-------------|------------------|-------------------|-------------------|
| OCS 1342 | 8° 40' 2,693" S | 97° 59' 8,949" E | 200M Cocos Island |
| OCS 1343 | 8° 39' 58,922" S | 97° 58' 58,590" E | 200M Cocos Island |
| OCS 1344 | 8° 39' 51,109" S | 97° 58' 36,649" E | 200M Cocos Island |
| OCS 1345 | 8° 39' 36,772" S | 97° 57' 55,769" E | 200M Cocos Island |
| OCS 1346 | 8° 39' 29,695" S | 97° 57' 35,303" E | 200M Cocos Island |
| OCS 1347 | 8° 39' 2,865" S | 97° 56' 16,587" E | 200M Cocos Island |
| OCS 1348 | 8° 38' 56,244" S | 97° 55' 56,888" E | 200M Cocos Island |
| OCS 1349 | 8° 38' 43,165" S | 97° 55' 17,423" E | 200M Cocos Island |
| OCS 1350 | 8° 38' 36,712" S | 97° 54' 57,671" E | 200M Cocos Island |
| OCS 1351 | 8° 37' 59,769" S | 97° 53' 2,949" E | 200M Cocos Island |
| OCS 1352 | 8° 37' 55,008" S | 97° 52' 48,058" E | 200M Cocos Island |
| OCS 1353 | 8° 37' 47,118" S | 97° 52' 23,202" E | 200M Cocos Island |
| OCS 1354 | 8° 37' 42,420" S | 97° 52' 8,290" E | 200M Cocos Island |
| OCS 1355 | 8° 37' 23,949" S | 97° 51' 9,242" E | 200M Cocos Island |
| OCS 1356 | 8° 36' 46,163" S | 97° 49' 9,372" E | 200M Cocos Island |
| OCS 1357 | 8° 36' 41,483" S | 97° 48' 54,361" E | 200M Cocos Island |
| OCS 1358 | 8° 36' 32,213" S | 97° 48' 24,285" E | 200M Cocos Island |
| OCS 1359 | 8° 36' 27,627" S | 97° 48' 9,236" E | 200M Cocos Island |
| OCS 1360 | 8° 36' 9,467" S | 97° 47' 8,945" E | 200M Cocos Island |
| OCS 1361 | 8° 36' 4,977" S | 97° 46' 53,865" E | 200M Cocos Island |
| OCS 1362 | 8° 35' 56,092" S | 97° 46' 23,668" E | 200M Cocos Island |
| OCS 1363 | 8° 35' 51,700" S | 97° 46' 8,562" E | 200M Cocos Island |
| OCS 1364 | 8° 35' 22,869" S | 97° 44' 28,205" E | 200M Cocos Island |
| OCS 1365 | 8° 35' 19,301" S | 97° 44' 15,660" E | 200M Cocos Island |
| OCS 1366 | 8° 35' 12,227" S | 97° 43' 50,538" E | 200M Cocos Island |
| OCS 1367 | 8° 35' 8,725" S | 97° 43' 37,972" E | 200M Cocos Island |
| OCS 1368 | 8° 34' 54,842" S | 97° 42' 47,641" E | 200M Cocos Island |
| OCS 1369 | 8° 34' 51,406" S | 97° 42' 35,053" E | 200M Cocos Island |
| OCS 1370 | 8° 34' 44,599" S | 97° 42' 9,851" E | 200M Cocos Island |
| OCS 1371 | 8° 34' 41,229" S | 97° 41' 57,241" E | 200M Cocos Island |
| OCS 1372 | 8° 34' 38,573" S | 97° 41' 47,197" E | 200M Cocos Island |
| OCS 1373 | 8° 34' 35,190" S | 97° 41' 34,258" E | 200M Cocos Island |

| Name | Latitude | Longitude | Remark |
|-------------|------------------|-------------------|-------------------|
| OCS 1374 | 8° 34' 28,494" S | 97° 41' 8,359" E | 200M Cocos Island |
| OCS 1375 | 8° 34' 25,182" S | 97° 40' 55,404" E | 200M Cocos Island |
| OCS 1376 | 8° 34' 12,073" S | 97° 40' 3,533" E | 200M Cocos Island |
| OCS 1377 | 8° 34' 8,832" S | 97° 39' 50,563" E | 200M Cocos Island |
| OCS 1378 | 8° 34' 2,421" S | 97° 39' 24,599" E | 200M Cocos Island |
| OCS 1379 | 8° 33' 59,252" S | 97° 39' 11,616" E | 200M Cocos Island |
| OCS 1380 | 8° 33' 34,164" S | 97° 37' 27,600" E | 200M Cocos Island |
| OCS 1381 | 8° 33' 31,066" S | 97° 37' 14,603" E | 200M Cocos Island |
| OCS 1382 | 8° 33' 24,938" S | 97° 36' 48,577" E | 200M Cocos Island |
| OCS 1383 | 8° 33' 21,911" S | 97° 36' 35,560" E | 200M Cocos Island |
| OCS 1384 | 8° 33' 9,936" S | 97° 35' 43,429" E | 200M Cocos Island |
| OCS 1385 | 8° 33' 6,980" S | 97° 35' 30,398" E | 200M Cocos Island |
| OCS 1386 | 8° 33' 1,137" S | 97° 35' 4,313" E | 200M Cocos Island |
| OCS 1387 | 8° 32' 58,254" S | 97° 34' 51,276" E | 200M Cocos Island |
| OCS 1388 | 8° 32' 15,359" S | 97° 31' 34,810" E | 200M Cocos Island |
| OCS 1389 | 8° 32' 12,624" S | 97° 31' 22,125" E | 200M Cocos Island |
| OCS 1390 | 8° 32' 7,215" S | 97° 30' 56,715" E | 200M Cocos Island |
| OCS 1391 | 8° 31' 50,364" S | 97° 29' 29,839" E | 200M Cocos Island |
| OCS 1392 | 8° 31' 46,320" S | 97° 29' 6,065" E | 200M Cocos Island |
| OCS 1393 | 8° 31' 31,482" S | 97° 27' 56,039" E | 200M Cocos Island |
| OCS 1394 | 8° 31' 28,870" S | 97° 27' 43,560" E | 200M Cocos Island |
| OCS 1395 | 8° 31' 23,624" S | 97° 27' 18,170" E | 200M Cocos Island |
| OCS 1396 | 8° 31' 14,067" S | 97° 26' 29,423" E | 200M Cocos Island |
| OCS 1397 | 8° 31' 9,535" S | 97° 26' 4,991" E | 200M Cocos Island |
| OCS 1398 | 8° 31' 5,221" S | 97° 25' 41,071" E | 200M Cocos Island |
| OCS 1399 | 8° 30' 58,465" S | 97° 25' 0,502" E | 200M Cocos Island |
| OCS 1400 | 8° 30' 56,795" S | 97° 24' 50,222" E | 200M Cocos Island |
| OCS 1401 | 8° 30' 52,808" S | 97° 24' 22,807" E | 200M Cocos Island |
| OCS 1402 | 8° 30' 40,595" S | 97° 23' 18,403" E | 200M Cocos Island |
| OCS 1403 | 8° 30' 33,678" S | 97° 22' 36,814" E | 200M Cocos Island |
| OCS 1404 | 8° 30' 29,489" S | 97° 22' 10,207" E | 200M Cocos Island |
| OCS 1405 | 8° 30' 27,432" S | 97° 21' 56,905" E | 200M Cocos Island |

| Name | Latitude | Longitude | Remark |
|-------------|------------------|-------------------|-------------------|
| OCS 1406 | 8° 30' 11,359" S | 97° 20' 11,063" E | 200M Cocos Island |
| OCS 1407 | 8° 30' 9,373" S | 97° 19' 57,736" E | 200M Cocos Island |
| OCS 1408 | 8° 30' 5,470" S | 97° 19' 31,055" E | 200M Cocos Island |
| OCS 1409 | 8° 30' 3,557" S | 97° 19' 17,713" E | 200M Cocos Island |
| OCS 1410 | 8° 29' 56,044" S | 97° 18' 24,297" E | 200M Cocos Island |
| OCS 1411 | 8° 29' 54,203" S | 97° 18' 10,948" E | 200M Cocos Island |
| OCS 1412 | 8° 29' 50,595" S | 97° 17' 44,232" E | 200M Cocos Island |
| OCS 1413 | 8° 29' 48,830" S | 97° 17' 30,881" E | 200M Cocos Island |
| OCS 1414 | 8° 29' 24,670" S | 97° 14' 24,346" E | 200M Cocos Island |
| OCS 1415 | 8° 29' 23,389" S | 97° 14' 14,292" E | 200M Cocos Island |
| OCS 1416 | 8° 29' 20,864" S | 97° 13' 54,155" E | 200M Cocos Island |
| OCS 1417 | 8° 29' 19,623" S | 97° 13' 44,085" E | 200M Cocos Island |
| OCS 1418 | 8° 29' 14,737" S | 97° 13' 3,764" E | 200M Cocos Island |
| OCS 1419 | 8° 29' 13,537" S | 97° 12' 53,684" E | 200M Cocos Island |
| OCS 1420 | 8° 29' 11,177" S | 97° 12' 33,514" E | 200M Cocos Island |
| OCS 1421 | 8° 29' 10,018" S | 97° 12' 23,428" E | 200M Cocos Island |
| OCS 1422 | 8° 29' 8,525" S | 97° 12' 10,188" E | 200M Cocos Island |
| OCS 1423 | 8° 29' 7,310" S | 97° 11' 59,192" E | 200M Cocos Island |
| OCS 1424 | 8° 29' 4,930" S | 97° 11' 37,191" E | 200M Cocos Island |
| OCS 1425 | 8° 29' 3,765" S | 97° 11' 26,190" E | 200M Cocos Island |
| OCS 1426 | 8° 28' 59,203" S | 97° 10' 42,166" E | 200M Cocos Island |
| OCS 1427 | 8° 28' 58,088" S | 97° 10' 31,167" E | 200M Cocos Island |
| OCS 1428 | 8° 28' 55,907" S | 97° 10' 9,158" E | 200M Cocos Island |
| OCS 1429 | 8° 28' 54,843" S | 97° 9' 58,164" E | 200M Cocos Island |
| OCS 1430 | 8° 28' 36,168" S | 97° 6' 40,736" E | 200M Cocos Island |
| OCS 1431 | 8° 28' 33,873" S | 97° 6' 15,037" E | 200M Cocos Island |
| OCS 1432 | 8° 28' 29,550" S | 97° 5' 23,589" E | 200M Cocos Island |
| OCS 1433 | 8° 28' 27,525" S | 97° 4' 57,860" E | 200M Cocos Island |
| OCS 1434 | 8° 28' 24,031" S | 97° 4' 10,284" E | 200M Cocos Island |