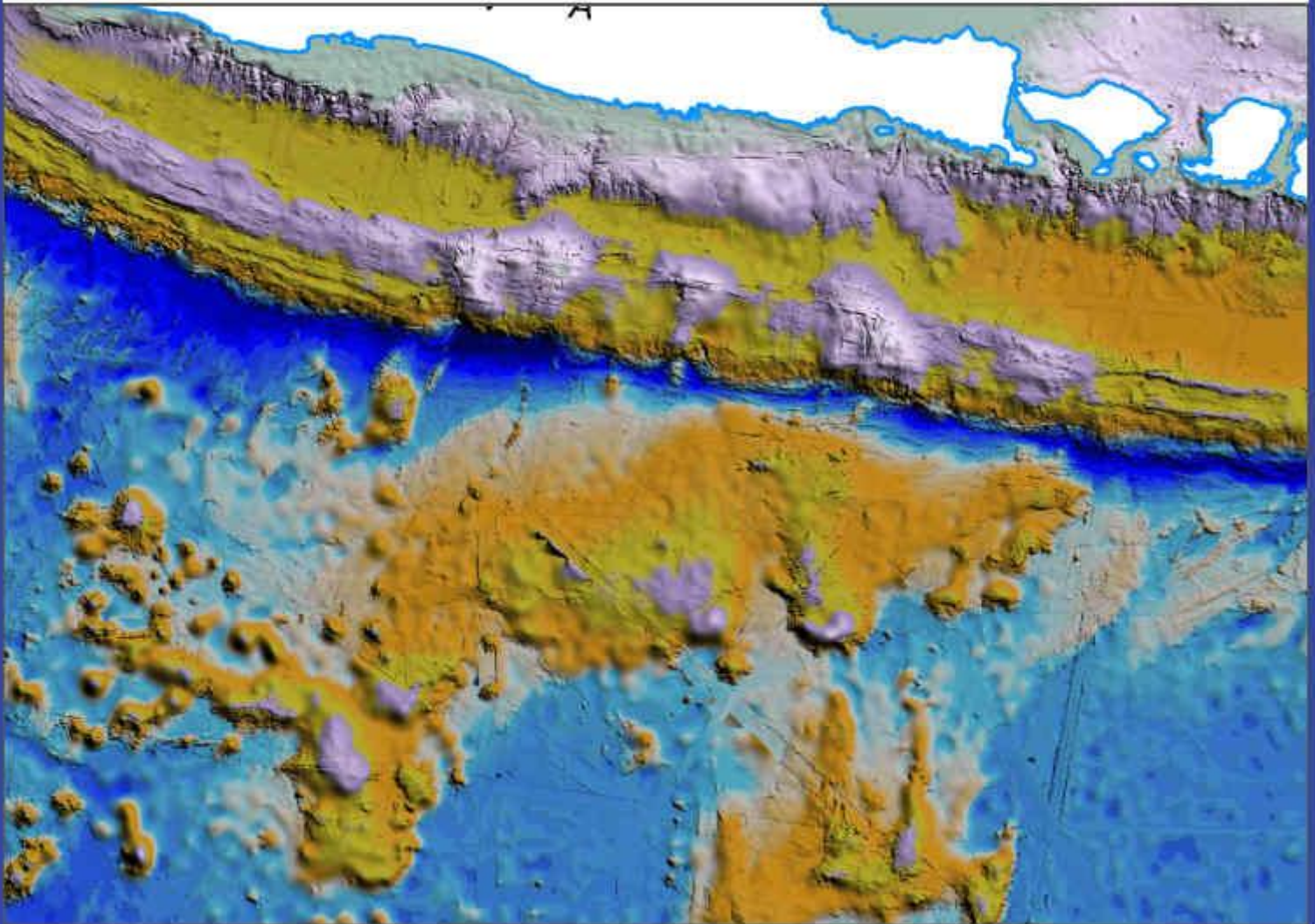




Continental Shelf Submission of The Republic of Indonesia



Partial Submission in respect of
the Area of South of Java and South of Nusa Tenggara



**Government of the Republic of Indonesia
2022**

EXECUTIVE SUMMARY



Continental Shelf Submission of the Republic of Indonesia

Partial Submission in respect of
the Area of South of Java and South of Nusa Tenggara

EXECUTIVE SUMMARY

**Government of the Republic of Indonesia
2022**

Table of Contents

1. INTRODUCTION	1
2. The Outer Limit of the Continental Shelf in the Area of South of Java and South of Nusa Tenggara.	2
3. Specific Provision of Article 76 Invoked to Support the Submission	4
4. Ministries and Institutions Involved for the Preparation of the Submission...	4
5. Names Of Member of the Commission Who Provided Advice During the Preparation of the Partial Submission	4
6. Absence of Dispute	5
7. Detailed Description of the Outer Limit of the Continental Shelf in the Area of South of Java and South of Nusa Tenggara	5

List of Figure

Figure 1. An overview of the area of extended continental shelf in respect of the area of south of Java and south of Nusa Tenggara 3

Appendix

Appendix 1: Complete List of Coordinates of Outer Continental Shelf (OCS) in the Area of South of Java and South of Nusa Tenggara (All coordinates relate to the WGS 84 geodetic reference system) 6

1. INTRODUCTION

On 16 June 2008, Indonesia submitted to the Commission of the Limit of the Continental Shelf (UNCLCS), information on the limit of the continental shelf beyond 200 nautical miles (herein after referred as M) in the area of north-west Sumatera, which served as the first partial submission of Indonesia. The document also outlines three potential areas in which Indonesia may exercise its right to present further submission namely the area of the north of Papua, the south of Java, and the rest area of the west of Sumatera.

Indonesia's submission regarding the area of northwest of Sumatera received the Commission's recommendation on 28 March 2011 during the 27th session of the Commission. The recommendation confirmed Indonesia's right to delimitate **4.209 km sq** of seabed in the northwest of Sumatera as part of Indonesia's continental shelf. Following the preliminary information and recommendation of the Commission, Indonesia has continued the exercise to delineate the outer limit its continental shelf and submit the information on the limit of Indonesia's continental shelf to the Commission. The experience obtained during the process to obtain the Commission's recommendation provides know how, best practices, and confidence to further delineate Indonesia's continental shelf.

In 2019 and 2020, Indonesia respectively presented the 2nd and 3rd partial continental shelf submission with respect to the area of north of Papua, and the area of the southwest of Sumatera. In Papua, Indonesia presented information that the outer limit of the Indonesia continental shelf covers area of **196.568,9 km sq**, whereas in the southwest of Sumatera, Indonesia informed the Commission that Indonesia continental shelf covers area of **211.297,7 km sq**.

All the Indonesia's submissions are prepared and developed by Indonesian National Task Force for Delineation and Delimitation of the Continental Shelf Beyond 200 M (hereinafter the National Task Force). The National Task Force is coordinated by Coordinating Ministry for Maritime Affairs and Investment and consists of representatives from the Ministry of Foreign Affairs, the Ministry of Energy and Mineral Resources, the Ministry of Marine Affairs and Fisheries, the Ministry of Transportation, Geospatial Information Agency, Indonesian Agency for Research and Innovation, and the Indonesian Navy Hydro-Oceanographic Centre.

This document is prepared and summarized the fourth partial submission in the area south of Java and south of Nusa Tenggara. Indonesia presents this document as an integral part of its fourth partial submission that complements the first, the second, and

the third partial submission made by Indonesia. This partial submission shall not in any way exclude Indonesia's rights to inform the commission on the establishment of the outer limits of Indonesia's continental shelf in other areas. Accordingly, Indonesia will submit submissions in other areas in conformity with the Convention, the Rules of Procedures, as well as the Technical and Scientific Guidelines of the Commission.

2. The Outer Limit of the Continental Shelf in the Area of South of Java and South of Nusa Tenggara.

Indonesia affirms that Indonesia's continental margin in the south of Java and south of Nusa Tenggara geomorphologically extends south of Roo Rise. The geological studies in the area and the underwater topographic profiles derived from Indonesia National Bathymetric Data confirm that Roo Rise is a natural prolongation of Indonesia landmass. The appurtenance test conducted by Indonesia concludes that Indonesia has the right to delineate and establish the outer limit of Indonesia continental shelf in the south of Java and south of Nusa Tenggara as depicted in figure 1.

The outer limit of the continental shelf beyond 200 M in this area is delineated in accordance with the Rules of Procedures provided in the Article 76 of UNCLOS 1982, the Scientific and Technical Guidelines of the Commission on the Limits of the Continental Shelf (CLCS/11) and Rules of Procedures of the Commission on the Limits of the Continental Shelf.

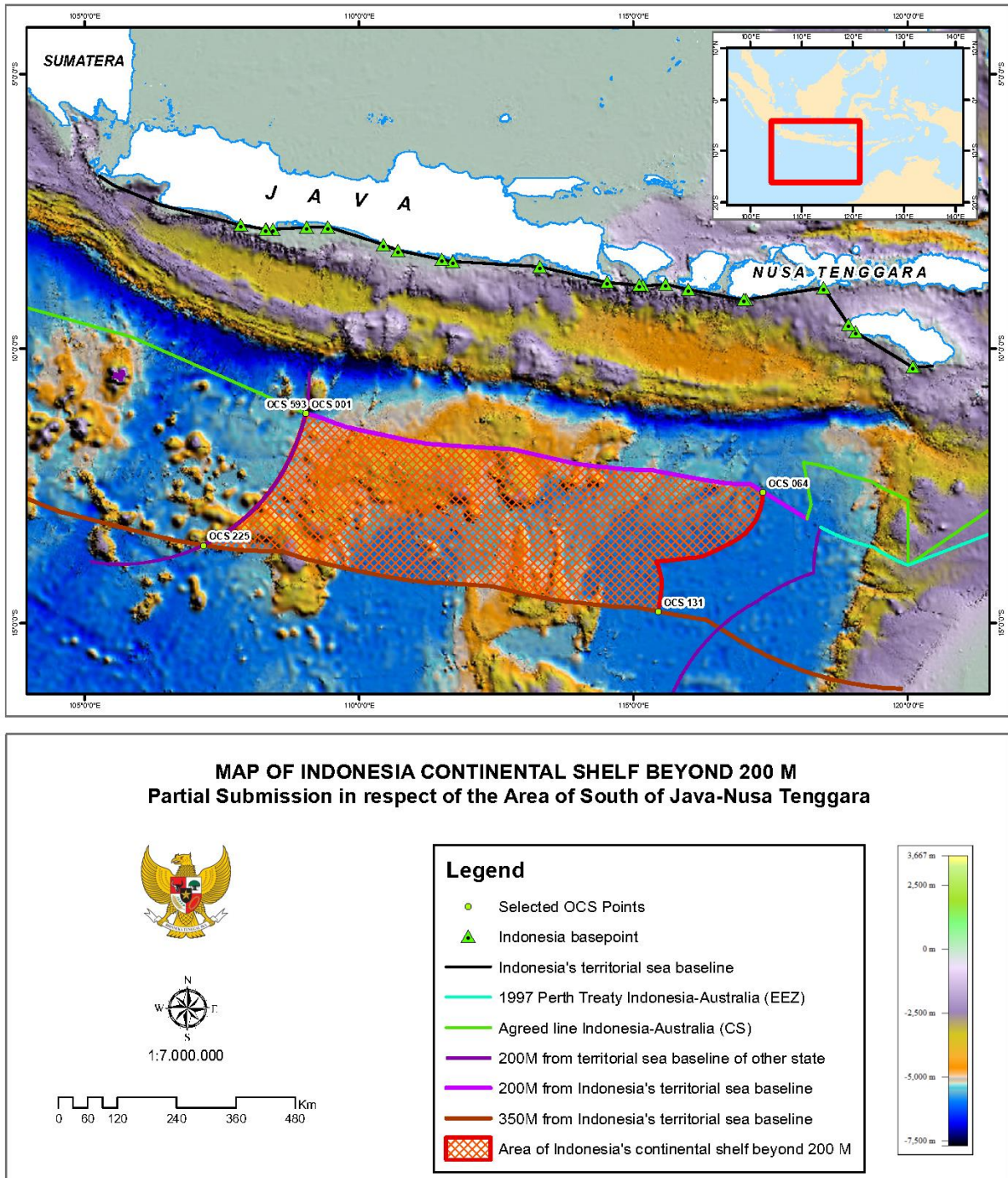


Figure 1. An overview of the area of extended continental shelf in respect of the area of south of Java and south of Nusa Tenggara

3. Specific Provision of Article 76 Invoked to Support the Submission

The outer limits contained in this partial submission are based on the provision of Article 76 paragraph 1, paragraph 4 (a)(ii), paragraph 6, and paragraph 7 of UNCLOS 1982.

4. Ministries and Institutions Involved for the Preparation of the Submission

The main document on the limits of Indonesia continental shelf in the south of Java and south of Nusa Tenggara including the maps, charts, geospatial database, as well as collection of other data utilized in this submission were carried out by the National Task Force. The National Task Force is comprised of relevant Ministries and Institutions as follows:

- The Coordinating Ministry of Maritime Affairs and Investment
- Ministry of Foreign Affairs
- Ministry of Energy and Mineral Resources
- Ministry of Marine Affairs and Fisheries
- Ministry of Transportation
- Geospatial Information Agency
- Indonesian Agency for Research and Innovation, and
- the Indonesian Navy Hydro-Oceanographic Center.

5. Names Of Member of the Commission Who Provided Advice During the Preparation of the Partial Submission

No member of the Commission on the Limits of the Continental Shelf assisted Indonesia in the preparation of this partial submission.

6. Absence of Dispute

Indonesia wishes to inform the Commission that the area of continental shelf in the south of Java and south of Nusa Tenggara, as the subject of this partial submission, is not subject to any dispute between Indonesia with any other states. However, Indonesia recognizes that the projected outer limit of Indonesia's claim in the south of Java and south of Nusa Tenggara may potentially overlap with the recommendation of the Commission to Australia. In this regard, Indonesia requests the Commission to examine Indonesia's submission without prejudice to the question of delimitation of the continental shelf with opposite or adjacent coastal states based on Article 76 paragraph 10 of the Convention.

7. Detailed Description of the Outer Limit of the Continental Shelf in the Area of South of Java and South of Nusa Tenggara

Pursuant to the Convention, in particular set of rules provided by article 76 of the Convention as well as the Scientific and Technical Guidelines of the Commission, Indonesia has delineated its outer limit of continental in the southwest of Sumatera by applying the Hedberg Formula.

Twenty nine (29) points of Foot of Slope (FOS) have been identified at both sides of Roo Rise resulting in the delineation of 593 fixed points of the outer limit of Indonesia Continental Shelf beyond 200 M in the south of Java and south of Nusa Tenggara.

The outer limit has taken into consideration the following constraints namely:

- Maximum distance of 60 M between the two adjacent fixed points
- The 350 M projection line from Indonesian Archipelagic baseline,
- The projection of 200 M of the continental shelf of Christmas Island, Australia.

The outer limit of the Indonesia continental shelf beyond 200 M in south of Java and south of Nusa Tenggara encloses an area of approximately **245.711 km sq**. The coordinates of the fixed points and the lengths of the connecting straight lines are listed in Appendix 1.

Appendix I:

Table 1. Complete List of Coordinates of Outer Continental Shelf (OCS) in the Area of South of Java and South of Nusa Tenggara

Name	Latitude	Longitude	Remark
OCS 001	11° 10' 12,950" S	109° 1' 38,818" E	200M Indonesia / 200M Christmas Island
OCS 002	11° 16' 2,110" S	109° 19' 44,367" E	200M Indonesia
OCS 003	11° 20' 31,082" S	109° 31' 55,312" E	200M Indonesia
OCS 004	11° 20' 52,705" S	109° 32' 52,179" E	200M Indonesia
OCS 005	11° 23' 8,405" S	109° 39' 30,335" E	200M Indonesia
OCS 006	11° 23' 42,717" S	109° 41' 16,617" E	200M Indonesia
OCS 007	11° 25' 11,003" S	109° 46' 12,839" E	200M Indonesia
OCS 008	11° 26' 11,137" S	109° 49' 48,081" E	200M Indonesia
OCS 009	11° 27' 0,108" S	109° 52' 59,353" E	200M Indonesia
OCS 010	11° 28' 17,686" S	109° 58' 25,625" E	200M Indonesia
OCS 011	11° 28' 35,691" S	109° 59' 49,414" E	200M Indonesia
OCS 012	11° 28' 53,519" S	110° 1' 13,241" E	200M Indonesia
OCS 013	11° 38' 25,565" S	110° 46' 2,979" E	200M Indonesia
OCS 014	11° 38' 54,341" S	110° 48' 22,071" E	200M Indonesia
OCS 015	11° 40' 8,060" S	110° 54' 35,612" E	200M Indonesia
OCS 016	11° 40' 15,773" S	110° 55' 17,039" E	200M Indonesia
OCS 017	11° 42' 15,959" S	111° 6' 31,413" E	200M Indonesia
OCS 018	11° 42' 22,711" S	111° 7' 6,775" E	200M Indonesia
OCS 019	11° 43' 13,942" S	111° 12' 33,445" E	200M Indonesia
OCS 020	11° 43' 43,022" S	111° 15' 54,236" E	200M Indonesia
OCS 021	11° 43' 58,451" S	111° 18' 1,106" E	200M Indonesia
OCS 022	11° 44' 33,955" S	111° 23' 29,965" E	200M Indonesia
OCS 023	11° 44' 41,009" S	111° 24' 44,728" E	200M Indonesia
OCS 024	11° 44' 59,492" S	111° 28' 59,743" E	200M Indonesia
OCS 025	11° 45' 17,481" S	111° 33' 37,238" E	200M Indonesia
OCS 026	11° 50' 5,949" S	112° 48' 15,649" E	200M Indonesia
OCS 027	12° 3' 18,003" S	113° 46' 36,132" E	200M Indonesia
OCS 028	12° 3' 28,437" S	113° 47' 21,932" E	200M Indonesia
OCS 029	12° 4' 17,095" S	113° 51' 20,550" E	200M Indonesia
OCS 030	12° 5' 12,359" S	113° 56' 5,819" E	200M Indonesia
OCS 031	12° 6' 16,053" S	114° 2' 55,819" E	200M Indonesia
OCS 032	12° 6' 32,511" S	114° 4' 54,028" E	200M Indonesia
OCS 033	12° 7' 6,664" S	114° 9' 47,676" E	200M Indonesia
OCS 034	12° 7' 32,156" S	114° 13' 45,096" E	200M Indonesia
OCS 035	12° 8' 14,408" S	114° 20' 22,278" E	200M Indonesia
OCS 036	12° 10' 48,223" S	114° 44' 28,176" E	200M Indonesia
OCS 037	12° 10' 51,778" S	114° 45' 4,244" E	200M Indonesia
OCS 038	12° 11' 21,159" S	114° 50' 25,140" E	200M Indonesia

Name	Latitude	Longitude	Remark
OCS 039	12° 11' 24,919" S	114° 51' 13,107" E	200M Indonesia
OCS 040	12° 11' 41,829" S	114° 55' 46,730" E	200M Indonesia
OCS 041	12° 11' 46,716" S	114° 57' 59,164" E	200M Indonesia
OCS 042	12° 11' 55,932" S	115° 1' 8,686" E	200M Indonesia
OCS 043	12° 11' 57,081" S	115° 1' 37,461" E	200M Indonesia
OCS 044	12° 11' 57,721" S	115° 2' 2,263" E	200M Indonesia
OCS 045	12° 12' 2,608" S	115° 6' 30,926" E	200M Indonesia
OCS 046	12° 12' 9,418" S	115° 10' 32,002" E	200M Indonesia
OCS 047	12° 11' 59,456" S	115° 17' 51,131" E	200M Indonesia
OCS 048	12° 12' 2,543" S	115° 18' 25,370" E	200M Indonesia
OCS 049	12° 12' 51,433" S	115° 22' 16,574" E	200M Indonesia
OCS 050	12° 13' 18,554" S	115° 24' 39,687" E	200M Indonesia
OCS 051	12° 24' 14,030" S	116° 23' 26,354" E	200M Indonesia
OCS 052	12° 24' 35,055" S	116° 25' 16,233" E	200M Indonesia
OCS 053	12° 25' 55,944" S	116° 34' 4,993" E	200M Indonesia
OCS 054	12° 26' 53,837" S	116° 42' 56,906" E	200M Indonesia
OCS 055	12° 27' 28,618" S	116° 51' 50,926" E	200M Indonesia
OCS 056	12° 27' 40,219" S	117° 0' 46,001" E	200M Indonesia
OCS 057	12° 27' 32,090" S	117° 7' 49,924" E	200M Indonesia
OCS 058	12° 27' 31,902" S	117° 8' 3,853" E	200M Indonesia
OCS 059	12° 28' 9,550" S	117° 8' 58,419" E	200M Indonesia
OCS 060	12° 28' 35,500" S	117° 9' 36,872" E	200M Indonesia
OCS 061	12° 30' 46,485" S	117° 12' 58,731" E	200M Indonesia
OCS 062	12° 32' 32,190" S	117° 15' 45,926" E	200M Indonesia
OCS 063	12° 33' 19,186" S	117° 17' 1,934" E	200M Indonesia
OCS 064	12° 36' 16,186" S	117° 21' 50,347" E	FOS + 60M / 200M Indonesia
OCS 065	12° 37' 18,049" S	117° 21' 51,967" E	FOS + 60M
OCS 066	12° 39' 55,890" S	117° 21' 49,088" E	FOS + 60M
OCS 067	12° 42' 33,457" S	117° 21' 39,199" E	FOS + 60M
OCS 068	12° 45' 10,450" S	117° 21' 22,315" E	FOS + 60M
OCS 069	12° 47' 46,570" S	117° 20' 58,464" E	FOS + 60M
OCS 070	12° 50' 21,519" S	117° 20' 27,690" E	FOS + 60M
OCS 071	12° 52' 55,002" S	117° 19' 50,046" E	FOS + 60M
OCS 072	12° 55' 26,725" S	117° 19' 5,601" E	FOS + 60M
OCS 073	12° 57' 56,399" S	117° 18' 14,437" E	FOS + 60M
OCS 074	13° 0' 23,738" S	117° 17' 16,648" E	FOS + 60M
OCS 075	13° 2' 48,461" S	117° 16' 12,341" E	FOS + 60M
OCS 076	13° 5' 10,291" S	117° 15' 1,636" E	FOS + 60M
OCS 077	13° 7' 28,957" S	117° 13' 44,665" E	FOS + 60M
OCS 078	13° 9' 44,192" S	117° 12' 21,573" E	FOS + 60M
OCS 079	13° 11' 55,739" S	117° 10' 52,515" E	FOS + 60M
OCS 080	13° 14' 3,344" S	117° 9' 17,660" E	FOS + 60M
OCS 081	13° 16' 6,765" S	117° 7' 37,186" E	FOS + 60M

Name	Latitude	Longitude	Remark
OCS 082	13° 18' 5,763" S	117° 5' 51,285" E	FOS + 60M
OCS 083	13° 20' 0,110" S	117° 4' 0,158" E	FOS + 60M
OCS 084	13° 21' 49,588" S	117° 2' 4,014" E	FOS + 60M
OCS 085	13° 23' 33,986" S	117° 0' 3,076" E	FOS + 60M
OCS 086	13° 25' 13,103" S	116° 57' 57,574" E	FOS + 60M
OCS 087	13° 26' 46,749" S	116° 55' 47,748" E	FOS + 60M
OCS 088	13° 28' 14,744" S	116° 53' 33,845" E	FOS + 60M
OCS 089	13° 29' 36,919" S	116° 51' 16,122" E	FOS + 60M
OCS 090	13° 30' 55,412" S	116° 48' 50,348" E	FOS + 60M
OCS 091	13° 33' 8,613" S	116° 44' 29,058" E	FOS + 60M
OCS 092	13° 35' 21,562" S	116° 40' 8,226" E	FOS + 60M
OCS 093	13° 37' 34,486" S	116° 35' 47,403" E	FOS + 60M
OCS 094	13° 39' 47,412" S	116° 31' 26,541" E	FOS + 60M
OCS 095	13° 42' 0,544" S	116° 27' 5,235" E	FOS + 60M
OCS 096	13° 43' 41,760" S	116° 23' 29,696" E	FOS + 60M
OCS 097	13° 43' 58,471" S	116° 22' 47,254" E	FOS + 60M
OCS 098	13° 43' 58,471" S	116° 22' 47,254" E	FOS + 60M
OCS 099	13° 45' 9,102" S	116° 19' 47,875" E	FOS + 60M
OCS 100	13° 46' 0,040" S	116° 17' 15,024" E	FOS + 60M
OCS 101	13° 46' 44,387" S	116° 14' 40,029" E	FOS + 60M
OCS 102	13° 47' 22,057" S	116° 12' 3,188" E	FOS + 60M
OCS 103	13° 47' 52,977" S	116° 9' 24,804" E	FOS + 60M
OCS 104	13° 48' 27,684" S	116° 5' 14,540" E	FOS + 60M
OCS 105	13° 48' 59,610" S	116° 0' 8,997" E	FOS + 60M
OCS 106	13° 49' 31,430" S	115° 55' 4,449" E	FOS + 60M
OCS 107	13° 50' 3,249" S	115° 49' 59,903" E	FOS + 60M
OCS 108	13° 50' 35,096" S	115° 44' 55,084" E	FOS + 60M
OCS 109	13° 51' 6,984" S	115° 39' 49,852" E	FOS + 60M
OCS 110	13° 51' 38,763" S	115° 34' 45,657" E	FOS + 60M
OCS 111	13° 52' 10,612" S	115° 29' 40,778" E	FOS + 60M
OCS 112	13° 52' 39,222" S	115° 25' 6,901" E	FOS + 60M
OCS 113	13° 52' 55,562" S	115° 25' 15,230" E	FOS + 60M
OCS 114	13° 55' 19,789" S	115° 26' 20,901" E	FOS + 60M
OCS 115	13° 57' 46,672" S	115° 27' 20,091" E	FOS + 60M
OCS 116	14° 0' 15,932" S	115° 28' 12,686" E	FOS + 60M
OCS 117	14° 2' 47,288" S	115° 28' 58,582" E	FOS + 60M
OCS 118	14° 5' 20,451" S	115° 29' 37,688" E	FOS + 60M
OCS 119	14° 7' 55,132" S	115° 30' 9,927" E	FOS + 60M
OCS 120	14° 10' 31,036" S	115° 30' 35,233" E	FOS + 60M
OCS 121	14° 13' 7,868" S	115° 30' 53,554" E	FOS + 60M
OCS 122	14° 15' 45,330" S	115° 31' 4,853" E	FOS + 60M
OCS 123	14° 18' 23,121" S	115° 31' 9,102" E	FOS + 60M
OCS 124	14° 23' 1,932" S	115° 30' 59,341" E	FOS + 60M

Name	Latitude	Longitude	Remark
OCS 125	14° 27' 39,179" S	115° 30' 27,559" E	FOS + 60M
OCS 126	14° 32' 34,093" S	115° 29' 41,854" E	FOS + 60M
OCS 127	14° 37' 28,819" S	115° 28' 56,169" E	FOS + 60M
OCS 128	14° 42' 23,646" S	115° 28' 10,459" E	FOS + 60M
OCS 129	14° 43' 35,850" S	115° 27' 58,492" E	FOS + 60M
OCS 130	14° 46' 10,793" S	115° 27' 27,561" E	FOS + 60M
OCS 131	14° 47' 14,749" S	115° 27' 11,785" E	FOS + 60M / 350M Indonesia
OCS 132	14° 42' 50,581" S	115° 3' 30,736" E	350M Indonesia
OCS 133	14° 42' 50,330" S	115° 3' 1,716" E	350M Indonesia
OCS 134	14° 42' 49,874" S	115° 2' 39,806" E	350M Indonesia
OCS 135	14° 42' 38,639" S	114° 57' 1,750" E	350M Indonesia
OCS 136	14° 42' 35,551" S	114° 55' 31,671" E	350M Indonesia
OCS 137	14° 42' 33,898" S	114° 54' 47,873" E	350M Indonesia
OCS 138	14° 42' 27,273" S	114° 52' 20,649" E	350M Indonesia
OCS 139	14° 42' 24,851" S	114° 51' 26,842" E	350M Indonesia
OCS 140	14° 42' 13,038" S	114° 47' 33,111" E	350M Indonesia
OCS 141	14° 42' 10,853" S	114° 46' 56,252" E	350M Indonesia
OCS 142	14° 41' 44,182" S	114° 39' 29,799" E	350M Indonesia
OCS 143	14° 41' 37,543" S	114° 38' 5,084" E	350M Indonesia
OCS 144	14° 40' 45,660" S	114° 28' 38,379" E	350M Indonesia
OCS 145	14° 40' 39,384" S	114° 27' 34,687" E	350M Indonesia
OCS 146	14° 40' 5,239" S	114° 22' 15,384" E	350M Indonesia
OCS 147	14° 37' 43,187" S	114° 0' 6,962" E	350M Indonesia
OCS 148	14° 37' 0,451" S	113° 53' 7,454" E	350M Indonesia
OCS 149	14° 36' 54,922" S	113° 52' 17,549" E	350M Indonesia
OCS 150	14° 35' 57,875" S	113° 44' 29,197" E	350M Indonesia
OCS 151	14° 35' 30,122" S	113° 41' 0,279" E	350M Indonesia
OCS 152	14° 34' 51,191" S	113° 36' 42,274" E	350M Indonesia
OCS 153	14° 33' 36,363" S	113° 28' 56,671" E	350M Indonesia
OCS 154	14° 32' 9,618" S	113° 21' 13,276" E	350M Indonesia
OCS 155	14° 32' 1,555" S	113° 20' 32,600" E	350M Indonesia
OCS 156	14° 30' 32,903" S	113° 13' 32,026" E	350M Indonesia
OCS 157	14° 30' 14,921" S	113° 12' 11,093" E	350M Indonesia
OCS 158	14° 28' 48,159" S	113° 5' 52,714" E	350M Indonesia
OCS 159	14° 19' 44,728" S	112° 25' 46,890" E	350M Indonesia
OCS 160	14° 15' 55,688" S	111° 26' 48,568" E	350M Indonesia
OCS 161	14° 15' 27,694" S	111° 18' 58,184" E	350M Indonesia
OCS 162	14° 15' 26,312" S	111° 18' 38,479" E	350M Indonesia
OCS 163	14° 14' 51,239" S	111° 11' 8,416" E	350M Indonesia
OCS 164	14° 14' 39,502" S	111° 8' 56,347" E	350M Indonesia
OCS 165	14° 14' 4,999" S	111° 3' 19,598" E	350M Indonesia
OCS 166	14° 13' 37,335" S	110° 59' 15,770" E	350M Indonesia
OCS 167	14° 13' 8,883" S	110° 55' 31,949" E	350M Indonesia

Name	Latitude	Longitude	Remark
OCS 168	14° 12' 19,859" S	110° 49' 37,182" E	350M Indonesia
OCS 169	14° 12' 2,864" S	110° 47' 45,693" E	350M Indonesia
OCS 170	14° 11' 44,613" S	110° 45' 53,707" E	350M Indonesia
OCS 171	14° 10' 47,133" S	110° 40' 1,015" E	350M Indonesia
OCS 172	14° 10' 35,667" S	110° 38' 58,518" E	350M Indonesia
OCS 173	14° 9' 22,343" S	110° 32' 20,458" E	350M Indonesia
OCS 174	14° 8' 40,256" S	110° 28' 11,585" E	350M Indonesia
OCS 175	14° 8' 26,644" S	110° 26' 58,481" E	350M Indonesia
OCS 176	14° 6' 59,728" S	110° 19' 25,453" E	350M Indonesia
OCS 177	14° 6' 17,855" S	110° 15' 59,128" E	350M Indonesia
OCS 178	14° 5' 25,764" S	110° 11' 54,000" E	350M Indonesia
OCS 179	13° 57' 1,067" S	109° 32' 21,906" E	350M Indonesia
OCS 180	13° 55' 55,234" S	109° 27' 9,862" E	350M Indonesia
OCS 181	13° 55' 22,656" S	109° 24' 42,215" E	350M Indonesia
OCS 182	13° 53' 36,397" S	109° 17' 4,416" E	350M Indonesia
OCS 183	13° 53' 7,624" S	109° 15' 6,311" E	350M Indonesia
OCS 184	13° 51' 39,380" S	109° 9' 29,464" E	350M Indonesia
OCS 185	13° 49' 55,357" S	109° 3' 9,356" E	350M Indonesia
OCS 186	13° 49' 34,172" S	109° 1' 56,879" E	350M Indonesia
OCS 187	13° 47' 17,558" S	108° 54' 27,782" E	350M Indonesia
OCS 188	13° 46' 18,205" S	108° 51' 20,060" E	350M Indonesia
OCS 189	13° 44' 51,424" S	108° 47' 1,962" E	350M Indonesia
OCS 190	13° 42' 17,700" S	108° 39' 38,888" E	350M Indonesia
OCS 191	13° 41' 40,288" S	108° 37' 58,420" E	350M Indonesia
OCS 192	13° 40' 58,594" S	108° 36' 7,148" E	350M Indonesia
OCS 193	13° 41' 1,413" S	108° 33' 47,054" E	350M Indonesia
OCS 194	13° 41' 7,560" S	108° 25' 57,000" E	350M Indonesia
OCS 195	13° 41' 3,385" S	108° 20' 34,879" E	350M Indonesia
OCS 196	13° 41' 2,943" S	108° 19' 17,983" E	350M Indonesia
OCS 197	13° 41' 2,031" S	108° 18' 6,935" E	350M Indonesia
OCS 198	13° 41' 0,353" S	108° 16' 42,585" E	350M Indonesia
OCS 199	13° 40' 55,536" S	108° 13' 50,292" E	350M Indonesia
OCS 200	13° 40' 51,557" S	108° 10' 37,119" E	350M Indonesia
OCS 201	13° 40' 50,061" S	108° 10' 17,039" E	350M Indonesia
OCS 202	13° 40' 48,636" S	108° 8' 15,236" E	350M Indonesia
OCS 203	13° 40' 47,537" S	108° 6' 41,263" E	350M Indonesia
OCS 204	13° 40' 38,011" S	108° 3' 15,165" E	350M Indonesia
OCS 205	13° 40' 34,743" S	108° 2' 0,847" E	350M Indonesia
OCS 206	13° 40' 27,039" S	107° 59' 32,685" E	350M Indonesia
OCS 207	13° 40' 14,322" S	107° 55' 55,810" E	350M Indonesia
OCS 208	13° 40' 4,321" S	107° 53' 23,015" E	350M Indonesia
OCS 209	13° 40' 0,021" S	107° 52' 24,507" E	350M Indonesia
OCS 210	13° 39' 41,794" S	107° 48' 37,095" E	350M Indonesia

Name	Latitude	Longitude	Remark
OCS 211	13° 39' 24,388" S	107° 45' 16,992" E	350M Indonesia
OCS 212	13° 39' 21,495" S	107° 44' 46,114" E	350M Indonesia
OCS 213	13° 39' 13,274" S	107° 43' 21,975" E	350M Indonesia
OCS 214	13° 39' 0,869" S	107° 41' 19,154" E	350M Indonesia
OCS 215	13° 38' 40,497" S	107° 38' 10,293" E	350M Indonesia
OCS 216	13° 38' 28,263" S	107° 36' 23,506" E	350M Indonesia
OCS 217	13° 38' 11,142" S	107° 34' 2,201" E	350M Indonesia
OCS 218	13° 37' 48,395" S	107° 31' 4,568" E	350M Indonesia
OCS 219	13° 37' 35,118" S	107° 29' 26,073" E	350M Indonesia
OCS 220	13° 37' 12,542" S	107° 26' 46,437" E	350M Indonesia
OCS 221	13° 36' 47,851" S	107° 24' 0,009" E	350M Indonesia
OCS 222	13° 36' 33,794" S	107° 22' 29,863" E	350M Indonesia
OCS 223	13° 36' 7,140" S	107° 19' 31,717" E	350M Indonesia
OCS 224	13° 35' 27,882" S	107° 15' 34,374" E	350M Indonesia
OCS 225	13° 34' 33,561" S	107° 10' 5,202" E	200M Christmas Island / 350M Indonesia
OCS 226	13° 34' 19,407" S	107° 10' 34,338" E	200M Christmas Island
OCS 227	13° 34' 4,705" S	107° 11' 4,392" E	200M Christmas Island
OCS 228	13° 33' 49,922" S	107° 11' 34,404" E	200M Christmas Island
OCS 229	13° 33' 35,059" S	107° 12' 4,374" E	200M Christmas Island
OCS 230	13° 33' 20,115" S	107° 12' 34,301" E	200M Christmas Island
OCS 231	13° 33' 5,090" S	107° 13' 4,186" E	200M Christmas Island
OCS 232	13° 32' 49,984" S	107° 13' 34,028" E	200M Christmas Island
OCS 233	13° 32' 34,798" S	107° 14' 3,826" E	200M Christmas Island
OCS 234	13° 32' 19,532" S	107° 14' 33,581" E	200M Christmas Island
OCS 235	13° 32' 4,185" S	107° 15' 3,293" E	200M Christmas Island
OCS 236	13° 31' 48,759" S	107° 15' 32,960" E	200M Christmas Island
OCS 237	13° 31' 33,253" S	107° 16' 2,584" E	200M Christmas Island
OCS 238	13° 31' 17,666" S	107° 16' 32,163" E	200M Christmas Island
OCS 239	13° 31' 2,000" S	107° 17' 1,697" E	200M Christmas Island
OCS 240	13° 30' 46,255" S	107° 17' 31,187" E	200M Christmas Island
OCS 241	13° 30' 30,430" S	107° 18' 0,632" E	200M Christmas Island
OCS 242	13° 30' 14,529" S	107° 18' 30,024" E	200M Christmas Island
OCS 243	13° 29' 58,625" S	107° 18' 59,233" E	200M Christmas Island
OCS 244	13° 29' 43,159" S	107° 19' 27,459" E	200M Christmas Island
OCS 245	13° 29' 28,953" S	107° 19' 53,234" E	200M Christmas Island
OCS 246	13° 29' 15,319" S	107° 20' 17,832" E	200M Christmas Island
OCS 247	13° 29' 0,779" S	107° 20' 43,912" E	200M Christmas Island
OCS 248	13° 28' 42,921" S	107° 21' 15,742" E	200M Christmas Island
OCS 249	13° 28' 22,806" S	107° 21' 51,351" E	200M Christmas Island
OCS 250	13° 28' 8,245" S	107° 22' 16,960" E	200M Christmas Island
OCS 251	13° 27' 59,145" S	107° 22' 32,881" E	200M Christmas Island
OCS 252	13° 27' 45,391" S	107° 22' 56,828" E	200M Christmas Island
OCS 253	13° 27' 28,567" S	107° 23' 25,962" E	200M Christmas Island

Name	Latitude	Longitude	Remark
OCS 254	13° 27' 14,413" S	107° 23' 50,330" E	200M Christmas Island
OCS 255	13° 27' 1,916" S	107° 24' 11,738" E	200M Christmas Island
OCS 256	13° 26' 48,635" S	107° 24' 34,382" E	200M Christmas Island
OCS 257	13° 26' 34,937" S	107° 24' 57,619" E	200M Christmas Island
OCS 258	13° 26' 20,866" S	107° 25' 21,369" E	200M Christmas Island
OCS 259	13° 26' 5,812" S	107° 25' 46,639" E	200M Christmas Island
OCS 260	13° 25' 49,278" S	107° 26' 14,240" E	200M Christmas Island
OCS 261	13° 25' 32,128" S	107° 26' 42,698" E	200M Christmas Island
OCS 262	13° 25' 14,821" S	107° 27' 11,238" E	200M Christmas Island
OCS 263	13° 24' 57,433" S	107° 27' 39,737" E	200M Christmas Island
OCS 264	13° 24' 39,968" S	107° 28' 8,186" E	200M Christmas Island
OCS 265	13° 24' 22,426" S	107° 28' 36,585" E	200M Christmas Island
OCS 266	13° 24' 4,808" S	107° 29' 4,934" E	200M Christmas Island
OCS 267	13° 23' 47,114" S	107° 29' 33,233" E	200M Christmas Island
OCS 268	13° 23' 29,344" S	107° 30' 1,481" E	200M Christmas Island
OCS 269	13° 23' 11,497" S	107° 30' 29,679" E	200M Christmas Island
OCS 270	13° 22' 53,574" S	107° 30' 57,825" E	200M Christmas Island
OCS 271	13° 22' 35,576" S	107° 31' 25,921" E	200M Christmas Island
OCS 272	13° 22' 17,501" S	107° 31' 53,966" E	200M Christmas Island
OCS 273	13° 21' 59,351" S	107° 32' 21,960" E	200M Christmas Island
OCS 274	13° 21' 41,126" S	107° 32' 49,900" E	200M Christmas Island
OCS 275	13° 21' 22,858" S	107° 33' 17,741" E	200M Christmas Island
OCS 276	13° 21' 4,665" S	107° 33' 45,302" E	200M Christmas Island
OCS 277	13° 20' 46,472" S	107° 34' 12,702" E	200M Christmas Island
OCS 278	13° 20' 26,141" S	107° 34' 43,134" E	200M Christmas Island
OCS 279	13° 20' 5,507" S	107° 35' 13,831" E	200M Christmas Island
OCS 280	13° 19' 45,652" S	107° 35' 43,185" E	200M Christmas Island
OCS 281	13° 19' 28,603" S	107° 36' 8,244" E	200M Christmas Island
OCS 282	13° 19' 10,510" S	107° 36' 34,690" E	200M Christmas Island
OCS 283	13° 18' 51,724" S	107° 37' 1,992" E	200M Christmas Island
OCS 284	13° 18' 32,759" S	107° 37' 29,396" E	200M Christmas Island
OCS 285	13° 18' 13,713" S	107° 37' 56,754" E	200M Christmas Island
OCS 286	13° 17' 54,594" S	107° 38' 24,058" E	200M Christmas Island
OCS 287	13° 17' 35,402" S	107° 38' 51,307" E	200M Christmas Island
OCS 288	13° 17' 16,136" S	107° 39' 18,502" E	200M Christmas Island
OCS 289	13° 16' 56,797" S	107° 39' 45,642" E	200M Christmas Island
OCS 290	13° 16' 37,384" S	107° 40' 12,727" E	200M Christmas Island
OCS 291	13° 16' 17,899" S	107° 40' 39,757" E	200M Christmas Island
OCS 292	13° 15' 58,341" S	107° 41' 6,731" E	200M Christmas Island
OCS 293	13° 15' 38,710" S	107° 41' 33,649" E	200M Christmas Island
OCS 294	13° 15' 19,007" S	107° 42' 0,512" E	200M Christmas Island
OCS 295	13° 14' 59,231" S	107° 42' 27,319" E	200M Christmas Island
OCS 296	13° 14' 39,384" S	107° 42' 54,069" E	200M Christmas Island

Name	Latitude	Longitude	Remark
OCS 297	13° 14' 19,464" S	107° 43' 20,763" E	200M Christmas Island
OCS 298	13° 13' 59,472" S	107° 43' 47,400" E	200M Christmas Island
OCS 299	13° 13' 39,408" S	107° 44' 13,980" E	200M Christmas Island
OCS 300	13° 13' 19,273" S	107° 44' 40,504" E	200M Christmas Island
OCS 301	13° 12' 59,067" S	107° 45' 6,970" E	200M Christmas Island
OCS 302	13° 12' 38,789" S	107° 45' 33,378" E	200M Christmas Island
OCS 303	13° 12' 18,440" S	107° 45' 59,729" E	200M Christmas Island
OCS 304	13° 11' 58,020" S	107° 46' 26,022" E	200M Christmas Island
OCS 305	13° 11' 37,529" S	107° 46' 52,257" E	200M Christmas Island
OCS 306	13° 11' 16,968" S	107° 47' 18,434" E	200M Christmas Island
OCS 307	13° 10' 56,336" S	107° 47' 44,552" E	200M Christmas Island
OCS 308	13° 10' 35,639" S	107° 48' 10,606" E	200M Christmas Island
OCS 309	13° 10' 14,970" S	107° 48' 36,478" E	200M Christmas Island
OCS 310	13° 9' 54,902" S	107° 49' 1,460" E	200M Christmas Island
OCS 311	13° 9' 36,501" S	107° 49' 24,251" E	200M Christmas Island
OCS 312	13° 9' 18,881" S	107° 49' 45,968" E	200M Christmas Island
OCS 313	13° 9' 0,300" S	107° 50' 8,754" E	200M Christmas Island
OCS 314	13° 8' 38,724" S	107° 50' 35,076" E	200M Christmas Island
OCS 315	13° 8' 19,197" S	107° 50' 58,779" E	200M Christmas Island
OCS 316	13° 8' 3,131" S	107° 51' 18,187" E	200M Christmas Island
OCS 317	13° 7' 46,027" S	107° 51' 38,752" E	200M Christmas Island
OCS 318	13° 7' 24,131" S	107° 52' 4,932" E	200M Christmas Island
OCS 319	13° 6' 58,434" S	107° 52' 35,473" E	200M Christmas Island
OCS 320	13° 6' 33,607" S	107° 53' 4,789" E	200M Christmas Island
OCS 321	13° 6' 13,344" S	107° 53' 28,576" E	200M Christmas Island
OCS 322	13° 5' 53,967" S	107° 53' 51,207" E	200M Christmas Island
OCS 323	13° 5' 33,951" S	107° 54' 14,465" E	200M Christmas Island
OCS 324	13° 5' 12,234" S	107° 54' 39,567" E	200M Christmas Island
OCS 325	13° 4' 49,826" S	107° 55' 5,323" E	200M Christmas Island
OCS 326	13° 4' 27,255" S	107° 55' 31,118" E	200M Christmas Island
OCS 327	13° 4' 4,608" S	107° 55' 56,854" E	200M Christmas Island
OCS 328	13° 3' 41,889" S	107° 56' 22,522" E	200M Christmas Island
OCS 329	13° 3' 19,099" S	107° 56' 48,125" E	200M Christmas Island
OCS 330	13° 2' 56,238" S	107° 57' 13,660" E	200M Christmas Island
OCS 331	13° 2' 33,306" S	107° 57' 39,129" E	200M Christmas Island
OCS 332	13° 2' 10,304" S	107° 58' 4,531" E	200M Christmas Island
OCS 333	13° 1' 47,230" S	107° 58' 29,866" E	200M Christmas Island
OCS 334	13° 1' 24,087" S	107° 58' 55,132" E	200M Christmas Island
OCS 335	13° 1' 0,873" S	107° 59' 20,332" E	200M Christmas Island
OCS 336	13° 0' 37,589" S	107° 59' 45,463" E	200M Christmas Island
OCS 337	13° 0' 14,236" S	108° 0' 10,527" E	200M Christmas Island
OCS 338	12° 59' 50,813" S	108° 0' 35,522" E	200M Christmas Island
OCS 339	12° 59' 27,320" S	108° 1' 0,448" E	200M Christmas Island

Name	Latitude	Longitude	Remark
OCS 340	12° 59' 3,759" S	108° 1' 25,306" E	200M Christmas Island
OCS 341	12° 58' 40,128" S	108° 1' 50,095" E	200M Christmas Island
OCS 342	12° 58' 16,432" S	108° 2' 14,812" E	200M Christmas Island
OCS 343	12° 57' 52,738" S	108° 2' 39,386" E	200M Christmas Island
OCS 344	12° 57' 29,451" S	108° 3' 3,403" E	200M Christmas Island
OCS 345	12° 57' 7,419" S	108° 3' 26,006" E	200M Christmas Island
OCS 346	12° 56' 46,183" S	108° 3' 47,680" E	200M Christmas Island
OCS 347	12° 56' 25,974" S	108° 4' 8,204" E	200M Christmas Island
OCS 348	12° 56' 2,133" S	108° 4' 32,292" E	200M Christmas Island
OCS 349	12° 55' 38,049" S	108° 4' 56,493" E	200M Christmas Island
OCS 350	12° 55' 13,638" S	108° 5' 20,880" E	200M Christmas Island
OCS 351	12° 54' 47,763" S	108° 5' 46,579" E	200M Christmas Island
OCS 352	12° 54' 24,907" S	108° 6' 9,152" E	200M Christmas Island
OCS 353	12° 54' 4,876" S	108° 6' 28,832" E	200M Christmas Island
OCS 354	12° 53' 43,187" S	108° 6' 50,042" E	200M Christmas Island
OCS 355	12° 53' 23,806" S	108° 7' 8,907" E	200M Christmas Island
OCS 356	12° 53' 4,635" S	108° 7' 27,482" E	200M Christmas Island
OCS 357	12° 52' 44,277" S	108° 7' 47,115" E	200M Christmas Island
OCS 358	12° 52' 21,946" S	108° 8' 8,548" E	200M Christmas Island
OCS 359	12° 51' 58,820" S	108° 8' 30,629" E	200M Christmas Island
OCS 360	12° 51' 35,528" S	108° 8' 52,749" E	200M Christmas Island
OCS 361	12° 51' 12,172" S	108° 9' 14,811" E	200M Christmas Island
OCS 362	12° 50' 48,760" S	108° 9' 36,809" E	200M Christmas Island
OCS 363	12° 50' 25,289" S	108° 9' 58,743" E	200M Christmas Island
OCS 364	12° 50' 1,762" S	108° 10' 20,612" E	200M Christmas Island
OCS 365	12° 49' 38,177" S	108° 10' 42,417" E	200M Christmas Island
OCS 366	12° 49' 14,536" S	108° 11' 4,158" E	200M Christmas Island
OCS 367	12° 48' 50,838" S	108° 11' 25,834" E	200M Christmas Island
OCS 368	12° 48' 27,084" S	108° 11' 47,444" E	200M Christmas Island
OCS 369	12° 48' 3,273" S	108° 12' 8,990" E	200M Christmas Island
OCS 370	12° 47' 39,406" S	108° 12' 30,471" E	200M Christmas Island
OCS 371	12° 47' 15,483" S	108° 12' 51,886" E	200M Christmas Island
OCS 372	12° 46' 51,504" S	108° 13' 13,236" E	200M Christmas Island
OCS 373	12° 46' 27,470" S	108° 13' 34,520" E	200M Christmas Island
OCS 374	12° 46' 3,552" S	108° 13' 55,587" E	200M Christmas Island
OCS 375	12° 45' 44,412" S	108° 14' 12,366" E	200M Christmas Island
OCS 376	12° 45' 29,471" S	108° 14' 25,352" E	200M Christmas Island
OCS 377	12° 45' 0,178" S	108° 14' 50,602" E	200M Christmas Island
OCS 378	12° 44' 49,021" S	108° 15' 0,160" E	200M Christmas Island
OCS 379	12° 44' 0,077" S	108° 15' 40,443" E	200M Christmas Island
OCS 380	12° 43' 37,773" S	108° 15' 59,612" E	200M Christmas Island
OCS 381	12° 43' 30,357" S	108° 16' 6,080" E	200M Christmas Island
OCS 382	12° 43' 22,690" S	108° 16' 12,774" E	200M Christmas Island

Name	Latitude	Longitude	Remark
OCS 383	12° 43' 7,471" S	108° 16' 26,004" E	200M Christmas Island
OCS 384	12° 42' 59,849" S	108° 16' 32,603" E	200M Christmas Island
OCS 385	12° 42' 48,368" S	108° 16' 42,499" E	200M Christmas Island
OCS 386	12° 42' 40,949" S	108° 16' 48,869" E	200M Christmas Island
OCS 387	12° 42' 24,123" S	108° 17' 3,251" E	200M Christmas Island
OCS 388	12° 42' 8,084" S	108° 17' 16,815" E	200M Christmas Island
OCS 389	12° 41' 46,930" S	108° 17' 34,546" E	200M Christmas Island
OCS 390	12° 41' 36,329" S	108° 17' 43,380" E	200M Christmas Island
OCS 391	12° 41' 22,680" S	108° 17' 54,684" E	200M Christmas Island
OCS 392	12° 41' 10,338" S	108° 18' 4,862" E	200M Christmas Island
OCS 393	12° 40' 56,015" S	108° 18' 16,625" E	200M Christmas Island
OCS 394	12° 40' 36,980" S	108° 18' 32,091" E	200M Christmas Island
OCS 395	12° 39' 58,754" S	108° 19' 2,827" E	200M Christmas Island
OCS 396	12° 39' 39,387" S	108° 19' 18,236" E	200M Christmas Island
OCS 397	12° 39' 23,701" S	108° 19' 30,583" E	200M Christmas Island
OCS 398	12° 39' 5,606" S	108° 19' 44,783" E	200M Christmas Island
OCS 399	12° 38' 47,231" S	108° 19' 59,166" E	200M Christmas Island
OCS 400	12° 38' 27,025" S	108° 20' 14,940" E	200M Christmas Island
OCS 401	12° 38' 6,227" S	108° 20' 31,132" E	200M Christmas Island
OCS 402	12° 37' 45,351" S	108° 20' 47,338" E	200M Christmas Island
OCS 403	12° 37' 29,319" S	108° 20' 59,749" E	200M Christmas Island
OCS 404	12° 36' 14,339" S	108° 22' 0,020" E	200M Christmas Island
OCS 405	12° 35' 24,384" S	108° 22' 39,101" E	200M Christmas Island
OCS 406	12° 35' 3,505" S	108° 22' 54,990" E	200M Christmas Island
OCS 407	12° 34' 37,316" S	108° 23' 14,822" E	200M Christmas Island
OCS 408	12° 34' 10,884" S	108° 23' 34,722" E	200M Christmas Island
OCS 409	12° 33' 44,399" S	108° 23' 54,548" E	200M Christmas Island
OCS 410	12° 33' 17,860" S	108° 24' 14,299" E	200M Christmas Island
OCS 411	12° 32' 51,269" S	108° 24' 33,975" E	200M Christmas Island
OCS 412	12° 32' 24,624" S	108° 24' 53,577" E	200M Christmas Island
OCS 413	12° 31' 57,927" S	108° 25' 13,103" E	200M Christmas Island
OCS 414	12° 31' 31,177" S	108° 25' 32,555" E	200M Christmas Island
OCS 415	12° 31' 4,375" S	108° 25' 51,931" E	200M Christmas Island
OCS 416	12° 30' 37,521" S	108° 26' 11,231" E	200M Christmas Island
OCS 417	12° 30' 10,614" S	108° 26' 30,456" E	200M Christmas Island
OCS 418	12° 29' 43,657" S	108° 26' 49,605" E	200M Christmas Island
OCS 419	12° 29' 16,647" S	108° 27' 8,679" E	200M Christmas Island
OCS 420	12° 28' 49,586" S	108° 27' 27,676" E	200M Christmas Island
OCS 421	12° 28' 22,474" S	108° 27' 46,597" E	200M Christmas Island
OCS 422	12° 27' 55,312" S	108° 28' 5,442" E	200M Christmas Island
OCS 423	12° 27' 28,098" S	108° 28' 24,211" E	200M Christmas Island
OCS 424	12° 27' 0,834" S	108° 28' 42,903" E	200M Christmas Island
OCS 425	12° 26' 33,520" S	108° 29' 1,518" E	200M Christmas Island

Name	Latitude	Longitude	Remark
OCS 426	12° 26' 6,156" S	108° 29' 20,057" E	200M Christmas Island
OCS 427	12° 25' 38,742" S	108° 29' 38,518" E	200M Christmas Island
OCS 428	12° 25' 11,278" S	108° 29' 56,903" E	200M Christmas Island
OCS 429	12° 24' 43,765" S	108° 30' 15,210" E	200M Christmas Island
OCS 430	12° 24' 16,202" S	108° 30' 33,440" E	200M Christmas Island
OCS 431	12° 23' 48,591" S	108° 30' 51,592" E	200M Christmas Island
OCS 432	12° 23' 20,930" S	108° 31' 9,667" E	200M Christmas Island
OCS 433	12° 22' 53,221" S	108° 31' 27,664" E	200M Christmas Island
OCS 434	12° 22' 25,464" S	108° 31' 45,584" E	200M Christmas Island
OCS 435	12° 21' 57,658" S	108° 32' 3,425" E	200M Christmas Island
OCS 436	12° 21' 29,805" S	108° 32' 21,188" E	200M Christmas Island
OCS 437	12° 21' 1,903" S	108° 32' 38,873" E	200M Christmas Island
OCS 438	12° 20' 33,954" S	108° 32' 56,480" E	200M Christmas Island
OCS 439	12° 20' 5,958" S	108° 33' 14,008" E	200M Christmas Island
OCS 440	12° 19' 37,915" S	108° 33' 31,457" E	200M Christmas Island
OCS 441	12° 19' 9,824" S	108° 33' 48,828" E	200M Christmas Island
OCS 442	12° 18' 41,687" S	108° 34' 6,120" E	200M Christmas Island
OCS 443	12° 18' 13,504" S	108° 34' 23,332" E	200M Christmas Island
OCS 444	12° 17' 45,281" S	108° 34' 40,462" E	200M Christmas Island
OCS 445	12° 17' 17,146" S	108° 34' 57,432" E	200M Christmas Island
OCS 446	12° 16' 49,879" S	108° 35' 13,779" E	200M Christmas Island
OCS 447	12° 16' 24,927" S	108° 35' 28,652" E	200M Christmas Island
OCS 448	12° 16' 1,074" S	108° 35' 42,793" E	200M Christmas Island
OCS 449	12° 15' 35,787" S	108° 35' 57,698" E	200M Christmas Island
OCS 450	12° 15' 5,120" S	108° 36' 15,663" E	200M Christmas Island
OCS 451	12° 14' 31,178" S	108° 36' 35,413" E	200M Christmas Island
OCS 452	12° 14' 2,371" S	108° 36' 52,059" E	200M Christmas Island
OCS 453	12° 13' 38,240" S	108° 37' 5,915" E	200M Christmas Island
OCS 454	12° 13' 16,520" S	108° 37' 18,318" E	200M Christmas Island
OCS 455	12° 12' 54,276" S	108° 37' 30,957" E	200M Christmas Island
OCS 456	12° 12' 31,824" S	108° 37' 43,651" E	200M Christmas Island
OCS 457	12° 12' 10,649" S	108° 37' 55,565" E	200M Christmas Island
OCS 458	12° 11' 47,947" S	108° 38' 8,276" E	200M Christmas Island
OCS 459	12° 11' 24,603" S	108° 38' 21,278" E	200M Christmas Island
OCS 460	12° 11' 0,708" S	108° 38' 34,517" E	200M Christmas Island
OCS 461	12° 10' 35,225" S	108° 38' 48,555" E	200M Christmas Island
OCS 462	12° 10' 7,330" S	108° 39' 3,830" E	200M Christmas Island
OCS 463	12° 9' 38,486" S	108° 39' 19,524" E	200M Christmas Island
OCS 464	12° 9' 9,468" S	108° 39' 35,209" E	200M Christmas Island
OCS 465	12° 8' 40,419" S	108° 39' 50,807" E	200M Christmas Island
OCS 466	12° 8' 11,446" S	108° 40' 6,261" E	200M Christmas Island
OCS 467	12° 7' 42,658" S	108° 40' 21,515" E	200M Christmas Island
OCS 468	12° 7' 14,643" S	108° 40' 36,261" E	200M Christmas Island

Name	Latitude	Longitude	Remark
OCS 469	12° 6' 52,213" S	108° 40' 47,999" E	200M Christmas Island
OCS 470	12° 6' 34,522" S	108° 40' 57,160" E	200M Christmas Island
OCS 471	12° 5' 59,873" S	108° 41' 14,919" E	200M Christmas Island
OCS 472	12° 5' 42,518" S	108° 41' 23,725" E	200M Christmas Island
OCS 473	12° 4' 34,138" S	108° 41' 58,070" E	200M Christmas Island
OCS 474	12° 4' 17,008" S	108° 42' 6,588" E	200M Christmas Island
OCS 475	12° 3' 42,672" S	108° 42' 23,489" E	200M Christmas Island
OCS 476	12° 3' 27,743" S	108° 42' 30,773" E	200M Christmas Island
OCS 477	12° 3' 7,161" S	108° 42' 40,727" E	200M Christmas Island
OCS 478	12° 2' 47,196" S	108° 42' 50,643" E	200M Christmas Island
OCS 479	12° 2' 20,175" S	108° 43' 3,989" E	200M Christmas Island
OCS 480	12° 1' 43,213" S	108° 43' 20,119" E	200M Christmas Island
OCS 481	12° 1' 33,697" S	108° 43' 24,927" E	200M Christmas Island
OCS 482	12° 1' 14,452" S	108° 43' 34,408" E	200M Christmas Island
OCS 483	12° 0' 31,985" S	108° 43' 54,464" E	200M Christmas Island
OCS 484	12° 0' 20,908" S	108° 44' 0,239" E	200M Christmas Island
OCS 485	12° 0' 6,966" S	108° 44' 7,266" E	200M Christmas Island
OCS 486	11° 59' 47,843" S	108° 44' 16,853" E	200M Christmas Island
OCS 487	11° 59' 33,950" S	108° 44' 23,862" E	200M Christmas Island
OCS 488	11° 59' 21,139" S	108° 44' 30,168" E	200M Christmas Island
OCS 489	11° 58' 1,651" S	108° 45' 7,497" E	200M Christmas Island
OCS 490	11° 57' 50,470" S	108° 45' 12,499" E	200M Christmas Island
OCS 491	11° 57' 36,631" S	108° 45' 18,637" E	200M Christmas Island
OCS 492	11° 57' 16,395" S	108° 45' 27,534" E	200M Christmas Island
OCS 493	11° 56' 52,662" S	108° 45' 37,915" E	200M Christmas Island
OCS 494	11° 56' 16,016" S	108° 45' 55,303" E	200M Christmas Island
OCS 495	11° 55' 20,275" S	108° 46' 20,878" E	200M Christmas Island
OCS 496	11° 55' 2,301" S	108° 46' 28,847" E	200M Christmas Island
OCS 497	11° 54' 53,308" S	108° 46' 32,812" E	200M Christmas Island
OCS 498	11° 54' 17,286" S	108° 46' 48,605" E	200M Christmas Island
OCS 499	11° 54' 8,276" S	108° 46' 52,534" E	200M Christmas Island
OCS 500	11° 53' 50,234" S	108° 47' 0,355" E	200M Christmas Island
OCS 501	11° 53' 40,786" S	108° 47' 4,427" E	200M Christmas Island
OCS 502	11° 53' 23,936" S	108° 47' 11,642" E	200M Christmas Island
OCS 503	11° 53' 4,858" S	108° 47' 19,768" E	200M Christmas Island
OCS 504	11° 52' 54,060" S	108° 47' 24,726" E	200M Christmas Island
OCS 505	11° 52' 24,158" S	108° 47' 38,600" E	200M Christmas Island
OCS 506	11° 51' 54,219" S	108° 47' 52,391" E	200M Christmas Island
OCS 507	11° 51' 24,243" S	108° 48' 6,098" E	200M Christmas Island
OCS 508	11° 50' 54,229" S	108° 48' 19,721" E	200M Christmas Island
OCS 509	11° 50' 24,180" S	108° 48' 33,260" E	200M Christmas Island
OCS 510	11° 49' 54,093" S	108° 48' 46,715" E	200M Christmas Island
OCS 511	11° 49' 23,971" S	108° 49' 0,087" E	200M Christmas Island

Name	Latitude	Longitude	Remark
OCS 512	11° 48' 53,813" S	108° 49' 13,374" E	200M Christmas Island
OCS 513	11° 48' 23,655" S	108° 49' 26,561" E	200M Christmas Island
OCS 514	11° 47' 54,239" S	108° 49' 39,330" E	200M Christmas Island
OCS 515	11° 47' 33,834" S	108° 49' 48,132" E	200M Christmas Island
OCS 516	11° 47' 0,426" S	108° 50' 2,239" E	200M Christmas Island
OCS 517	11° 45' 54,237" S	108° 50' 29,595" E	200M Christmas Island
OCS 518	11° 45' 21,034" S	108° 50' 43,027" E	200M Christmas Island
OCS 519	11° 44' 33,168" S	108° 51' 1,972" E	200M Christmas Island
OCS 520	11° 44' 20,350" S	108° 51' 7,258" E	200M Christmas Island
OCS 521	11° 43' 59,048" S	108° 51' 16,010" E	200M Christmas Island
OCS 522	11° 43' 37,734" S	108° 51' 24,732" E	200M Christmas Island
OCS 523	11° 43' 16,409" S	108° 51' 33,424" E	200M Christmas Island
OCS 524	11° 42' 55,071" S	108° 51' 42,087" E	200M Christmas Island
OCS 525	11° 42' 33,721" S	108° 51' 50,721" E	200M Christmas Island
OCS 526	11° 42' 12,360" S	108° 51' 59,324" E	200M Christmas Island
OCS 527	11° 41' 50,988" S	108° 52' 7,898" E	200M Christmas Island
OCS 528	11° 41' 29,650" S	108° 52' 16,423" E	200M Christmas Island
OCS 529	11° 41' 8,789" S	108° 52' 24,726" E	200M Christmas Island
OCS 530	11° 40' 49,175" S	108° 52' 32,502" E	200M Christmas Island
OCS 531	11° 40' 26,150" S	108° 52' 41,587" E	200M Christmas Island
OCS 532	11° 40' 7,486" S	108° 52' 48,910" E	200M Christmas Island
OCS 533	11° 39' 54,739" S	108° 52' 53,867" E	200M Christmas Island
OCS 534	11° 39' 30,089" S	108° 53' 3,372" E	200M Christmas Island
OCS 535	11° 39' 17,755" S	108° 53' 8,089" E	200M Christmas Island
OCS 536	11° 38' 30,111" S	108° 53' 26,156" E	200M Christmas Island
OCS 537	11° 38' 18,192" S	108° 53' 30,640" E	200M Christmas Island
OCS 538	11° 37' 54,323" S	108° 53' 39,545" E	200M Christmas Island
OCS 539	11° 37' 41,966" S	108° 53' 44,117" E	200M Christmas Island
OCS 540	11° 37' 23,697" S	108° 53' 50,817" E	200M Christmas Island
OCS 541	11° 37' 7,580" S	108° 53' 56,696" E	200M Christmas Island
OCS 542	11° 36' 56,005" S	108° 54' 0,883" E	200M Christmas Island
OCS 543	11° 36' 34,273" S	108° 54' 8,680" E	200M Christmas Island
OCS 544	11° 36' 23,399" S	108° 54' 12,551" E	200M Christmas Island
OCS 545	11° 35' 45,816" S	108° 54' 25,821" E	200M Christmas Island
OCS 546	11° 35' 21,388" S	108° 54' 34,351" E	200M Christmas Island
OCS 547	11° 35' 1,009" S	108° 54' 41,392" E	200M Christmas Island
OCS 548	11° 34' 27,063" S	108° 54' 52,992" E	200M Christmas Island
OCS 549	11° 34' 12,176" S	108° 54' 58,021" E	200M Christmas Island
OCS 550	11° 33' 10,423" S	108° 55' 16,607" E	200M Christmas Island
OCS 551	11° 32' 43,777" S	108° 55' 26,468" E	200M Christmas Island
OCS 552	11° 32' 23,925" S	108° 55' 33,556" E	200M Christmas Island
OCS 553	11° 32' 10,967" S	108° 55' 37,980" E	200M Christmas Island
OCS 554	11° 31' 51,270" S	108° 55' 44,693" E	200M Christmas Island

Name	Latitude	Longitude	Remark
OCS 555	11° 31' 11,867" S	108° 55' 58,026" E	200M Christmas Island
OCS 556	11° 30' 51,991" S	108° 56' 4,350" E	200M Christmas Island
OCS 557	11° 30' 32,892" S	108° 56' 10,319" E	200M Christmas Island
OCS 558	11° 29' 3,199" S	108° 56' 38,008" E	200M Christmas Island
OCS 559	11° 28' 35,079" S	108° 56' 49,806" E	200M Christmas Island
OCS 560	11° 27' 36,429" S	108° 57' 8,488" E	200M Christmas Island
OCS 561	11° 27' 6,614" S	108° 57' 17,770" E	200M Christmas Island
OCS 562	11° 26' 45,377" S	108° 57' 24,226" E	200M Christmas Island
OCS 563	11° 26' 14,711" S	108° 57' 33,473" E	200M Christmas Island
OCS 564	11° 25' 43,212" S	108° 57' 42,879" E	200M Christmas Island
OCS 565	11° 25' 11,649" S	108° 57' 52,209" E	200M Christmas Island
OCS 566	11° 24' 40,061" S	108° 58' 1,451" E	200M Christmas Island
OCS 567	11° 24' 8,449" S	108° 58' 10,606" E	200M Christmas Island
OCS 568	11° 23' 36,812" S	108° 58' 19,672" E	200M Christmas Island
OCS 569	11° 23' 5,150" S	108° 58' 28,651" E	200M Christmas Island
OCS 570	11° 22' 33,465" S	108° 58' 37,542" E	200M Christmas Island
OCS 571	11° 22' 1,756" S	108° 58' 46,344" E	200M Christmas Island
OCS 572	11° 21' 30,023" S	108° 58' 55,059" E	200M Christmas Island
OCS 573	11° 20' 58,266" S	108° 59' 3,686" E	200M Christmas Island
OCS 574	11° 20' 26,487" S	108° 59' 12,224" E	200M Christmas Island
OCS 575	11° 19' 54,684" S	108° 59' 20,674" E	200M Christmas Island
OCS 576	11° 19' 22,859" S	108° 59' 29,036" E	200M Christmas Island
OCS 577	11° 18' 51,012" S	108° 59' 37,310" E	200M Christmas Island
OCS 578	11° 18' 19,142" S	108° 59' 45,495" E	200M Christmas Island
OCS 579	11° 17' 47,251" S	108° 59' 53,592" E	200M Christmas Island
OCS 580	11° 17' 15,337" S	109° 0' 1,600" E	200M Christmas Island
OCS 581	11° 16' 43,402" S	109° 0' 9,520" E	200M Christmas Island
OCS 582	11° 16' 11,446" S	109° 0' 17,351" E	200M Christmas Island
OCS 583	11° 15' 39,469" S	109° 0' 25,093" E	200M Christmas Island
OCS 584	11° 15' 7,472" S	109° 0' 32,747" E	200M Christmas Island
OCS 585	11° 14' 35,453" S	109° 0' 40,312" E	200M Christmas Island
OCS 586	11° 14' 3,414" S	109° 0' 47,788" E	200M Christmas Island
OCS 587	11° 13' 31,356" S	109° 0' 55,176" E	200M Christmas Island
OCS 588	11° 12' 59,277" S	109° 1' 2,474" E	200M Christmas Island
OCS 589	11° 12' 27,179" S	109° 1' 9,684" E	200M Christmas Island
OCS 590	11° 11' 55,062" S	109° 1' 16,804" E	200M Christmas Island
OCS 591	11° 11' 22,926" S	109° 1' 23,836" E	200M Christmas Island
OCS 592	11° 10' 50,770" S	109° 1' 30,778" E	200M Christmas Island
OCS 593	11° 10' 18,596" S	109° 1' 37,632" E	200M Christmas Island