



**SUBMISSION
BY THE REPUBLIC OF KIRIBATI TO THE
COMMISSION ON THE LIMITS OF THE CONTINENTAL
SHELF**



TABLE OF CONTENTS

i. PREFACE	iii
ii. LIST OF FIGURES	iv
iii. LIST OF TABLES	iv
1. INTRODUCTION	1
2. ABSENCE OF DISPUTES	3
3. FORM OF SUBMISSION, MAPS AND TABLES	3
4. PROVISIONS OF ARTICLE 76 INVOKED	3
5. GEOGRAPHIC, MORPHOLOGICAL AND GEOLOGICAL OVERVIEW	4
6. THE OUTER LIMITS OF THE CONTINENTAL SHELF	4
7. COMMISSIONERS WHO PROVIDED ASSISTANCE DURING THE PREPARATION OF THE SUBMISSION	5



PREFACE

This Executive Summary forms part of the Submission by the Republic of Kiribati to the Commission on the Limits of the Continental Shelf.¹

¹ The Submission was prepared by:

Mr Romano Reo, Chief Surveyor, Ministry of Environment, Lands and Agriculture Development, Republic of Kiribati;
Mr Tion Uriam, Geographical Information Systems Manager, Ministry of Fisheries and Marine Resources Development, Republic of Kiribati;
Ms Ruria Iteraera, Legal Officer, Attorney Generals' Chambers, Republic of Kiribati;
Mr Joshua A Brien, Head of Section and Senior Legal Adviser (Economic and Legal Section, Special Advisory Services Division, Commonwealth Secretariat);
Mr Lindsay Parsons, Maritime Zone Solutions (engaged by the Commonwealth Secretariat);
Mr Scott Sweet, Independent Consultant (engaged by the Commonwealth Secretariat); and,
Mr Paul K Hibberd, Independent Consultant.



LIST OF FIGURES

FIGURE 1.	Map illustrating the Island groups of the Republic of Kiribati, geographic location and maritime zones in context of neighbouring coastal States	2
FIGURE 2.	Map illustrating the outer limits of the continental shelf of the Republic of Kiribati showing the outer limit line and area of continental shelf extending beyond 200M from the territorial sea baseline (RKI-ES-MAP 1).....	6
FIGURE 3.	Map illustrating the fixed points defining the outer limits of the continental shelf of the Republic of Kiribati in addition to the elements used for their construction (RKI-ES-Map 2).....	7

LIST OF TABLES

TABLE 1.	Coordinates defining the outer limits of the continental shelf of the Republic of Kiribati of the West Platform Area	8
TABLE 2.	Coordinates defining the outer limits of the continental shelf of the Republic of Kiribati in the East Platform Area.....	11
TABLE 3.	Coordinates defining the outer limits of the continental shelf of the Republic of Kiribati in the Central Platform Area	22
TABLE 4.	Coordinates defining the outer limits of the continental shelf of the Republic of Kiribati in the South Platform Area	28



1. Introduction

- 1.1 This Executive Summary forms part of the Submission made by the Republic of Kiribati pursuant to paragraph 8 of Article 76 of the United Nations Convention on the Law of the Sea, 1982 ('the Convention'), in support of the establishment by Kiribati of the outer limits of the continental shelf that lies beyond 200 nautical miles ('M') from the territorial sea baselines.
- 1.2 Where the continental shelf extends beyond 200 M from the territorial sea baselines, a coastal State seeking to establish the outer limits of the continental shelf beyond 200 M, is required under paragraph 8 of Article 76 to submit information on such outer limits to the Commission on the Limits of the Continental Shelf ('the Commission'), which makes recommendations to the coastal State concerning the outer limits of the continental shelf consistent with the relevant provisions of Article 76 of the Convention.
- 1.3 The Republic of Kiribati is an island nation comprising one raised coral island and 32 atolls dispersed over 3.5 million km² of the western and central Pacific Ocean in three principal island groups that are listed in a Schedule to the Constitution of Kiribati – the Gilbert Islands Group, the Phoenix Islands Group and the Line Islands Group. The nation straddles the equator and extends from its overlapping maritime zones with Nauru and Tuvalu in the west (both delimited by international agreement in August 2012), across the International Date Line to the east and beyond the Cook Islands (see Figure 1. below). The total land area of Kiribati is 811 km², enclosed by approximately 1143 km of coastline. The capital city – Bairiki – is located on the island of Tarawa in the Gilbert Islands Group.
- 1.4 Kiribati became a sovereign independent nation on 12 July 1979 following the enactment of the *Kiribati Independence Order 1979* by the British Privy Council and the establishment of the Constitution of Kiribati. Prior to attaining independence, Kiribati had formed the British Protectorate of Gilbert and Ellice Islands from 1896-1916, which later became the Crown Colony of Gilbert and Ellice Islands, and finally from 1975-1979, the British colony of Gilbert Islands.
- 1.5 Kiribati was admitted to the United Nations on 14 September 1999 and became a Contracting Party to the Convention on 24 February 2003 through the lodgement of an instrument of accession. Upon accession to the Convention, Kiribati lodged a Declaration under Article 310 of the Convention (*Declaration of 24 February 2003 made upon accession to the United Nations Convention on the Law of the Sea* viewable online at http://www.un.org/depts/los/doalos_publications/LOSBulletins/bulletinpdf/bulletin51e.pdf). The Declaration contains a series of observations concerning the application of Part IV of the Convention and the conditions that apply to the establishment of archipelagic baselines.
- 1.6 Kiribati originally established its maritime zones under the *Maritime Zones (Declaration) Act, 1983* - No. 7 of 16 May 1983, viewable online at: http://www.paclii.org/ki/legis/num_act/mza1983240/). This legislation was replaced on 1 September 2011 by the *Maritime Zones (Declaration) Act 2011*, which establishes the baselines of Kiribati from which its maritime zones are measured, also viewable online at http://www.paclii.org/ki/legis/num_act/mza2011240/).



- 1.7 As provided for under paragraph 1 of Article 76, the Republic of Kiribati has a continental shelf comprising the seabed and subsoil of the submarine areas that extend beyond the territorial sea throughout the natural prolongation of the relevant land territory to the outer edge of the continental margin, up to the limits provided for in paragraphs 4 to 6 of Article 76.
- 1.8 This Submission represents a full submission in respect of the continental shelf beyond 200 M from the territorial sea baseline of the Republic of Kiribati. For the purposes of preparing this Submission, Kiribati has applied the relevant provisions of Article 76 of the Convention, the Rules of Procedure of the Commission on the Limits of the Continental Shelf (CLCS/40/Rev. 1) adopted by the Commission on 17 April 2008 ('Rules of Procedure') and, the Scientific and Technical Guidelines of the Commission on the Limits of the Continental Shelf (CLCS/11) adopted by the Commission on 13 May 1999 ('the Guidelines').

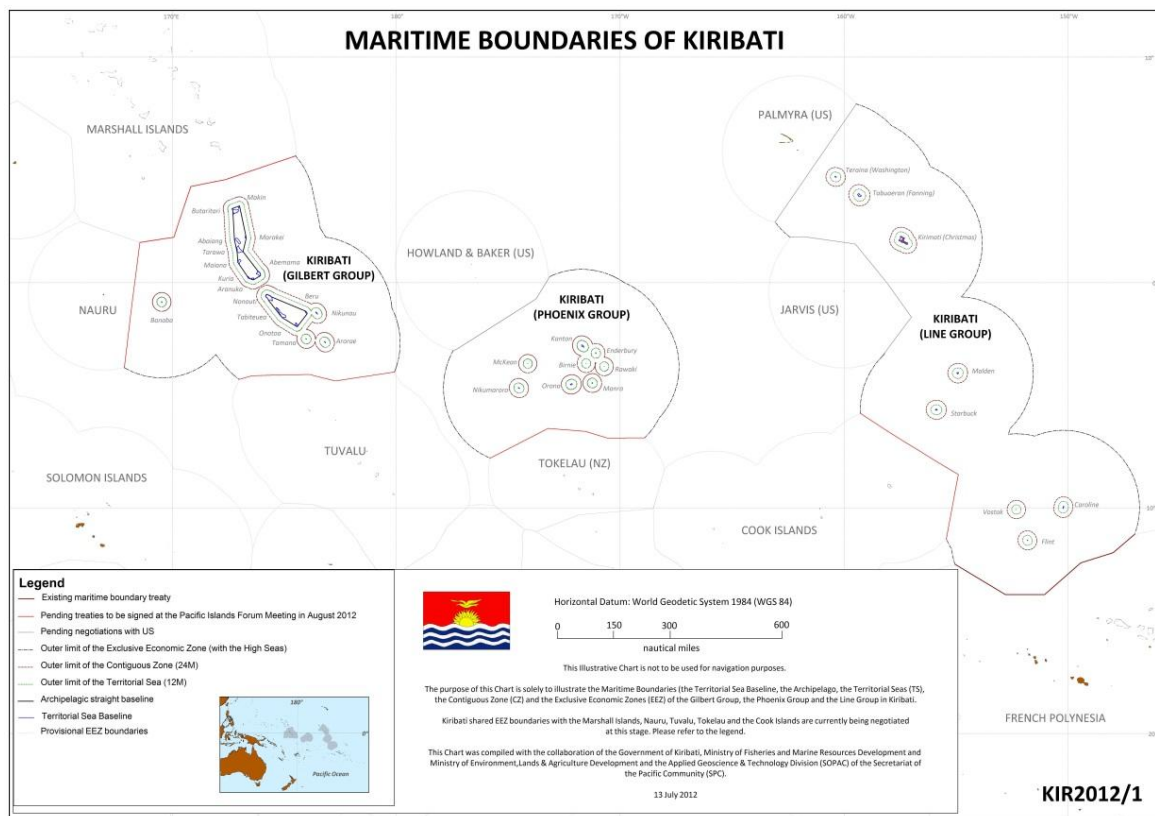


Figure 1. The Island groups of the Republic of Kiribati, geographic location and maritime zones in context of neighbouring coastal States.



2. Absence of Disputes

- 2.1 The Republic of Kiribati recalls that Article 9 of Annex II of the Convention provides that the actions of the Commission shall not prejudice matters relating to the delimitation of boundaries between States with opposite or adjacent coasts. The Commission has therefore adopted a practice, contained in Annex I to the Rules of Procedure, which is intended to prevent the consideration of a submission which would require the examination by the Commission of a disputed continental shelf without the consent of the affected parties in dispute.
- 2.2 In accordance with paragraph 2(a) of Annex I of the Rules of Procedure, the Republic of Kiribati confirms that the area of continental shelf that forms the basis of the present Submission is not the subject of any dispute with any other State.

3. Form of Submission, Maps and Tables

- 3.1 In accordance with Article 1 of Annex III to the Rules of Procedure and paragraphs 9.1.3 to 9.1.6 of the Guidelines, the Submission consists of three parts comprising:
- this Executive Summary (RKI-ES-DOC);
 - the Main Body (RKI-MB-DOC); and,
 - Supporting scientific and technical data (RKI-SD).

A separate section of this Executive Summary provides a brief outline of the region(s) of continental shelf beyond 200M, including a depiction of the outer limits of the continental shelf determined by the Republic of Kiribati.

- 3.2 Two maps at an appropriate scale are included in this Executive Summary and have been duly supplied as separate A0-size maps. These maps are reproduced in this Executive Summary as Figure 2 (RKI-ES-DOC-MAP 1), which depicts the outer limits of the continental shelf showing the outer limit line and area of continental shelf extending beyond 200 M from the territorial sea baseline and, Figure 3 (RKI-ES-DOC-MAP 2), which depicts the outer limits of the continental shelf and the provisions of Article 76 invoked.

4. Provisions of Article 76 Invoked

- 4.1 The Republic of Kiribati has invoked paragraphs 3, 4(a)(ii), 5 and 7 of Article 76 of the Convention in support of the determination of the outer limits of the continental shelf included in this Submission, as outlined in Section 8 of this Executive Summary.



5. Geographic, Morphological and Geological Overview

- 5.1 This Submission concerns the region of the central Pacific Ocean adjacent to the Line Islands Group of the Republic of Kiribati, which comprises the land territory of *Teraina* (or Washington Island), *Tabuaeran* (or Fanning Island), *Kiritimati* (or Christmas Island), *Malden*, *Starbuck*, *Caroline* (renamed Millenium in 2000), *Vostok* and *Flint* islands.
- 5.2 The Line Islands Group surmount the Line Islands Ridge Complex ('LIRC') a chain of tropical atolls, elevations, submarine ridges and seamounts in Central Pacific Ocean that rise approximately 4000-5000 m above the surrounding deep sea floor and extend for more than 4000 km from the Mid-Pacific Mountains in a roughly north-west-south-east orientation across some fifty degree of longitude to the Marquesas islands in the south. The submarine elevations of the LIRC surmounted by the Line Islands Group do not form a simple linear chain, and instead comprise scattered volcanic constructs or multiple strands of parallel en echelon elevations, which have coalesced to form broad, irregular platform structures, flanked in places by deeper shelf features.
- 5.3 There are four areas in which the continental shelf of Kiribati extends beyond 200 M from the territorial sea baseline in the region of the Line Islands Group. These areas are referred to in the Submission as:
- the Western Platform Area,
 - the Eastern Platform Area,
 - the Central Area and,
 - the South Area.
- 5.4 According to the Guidelines and in particular paragraph 2.2.3, the Republic of Kiribati is required to demonstrate that the natural prolongation of its relevant land territory extends beyond 200 M from the territorial sea baseline. A detailed examination of the geology and geomorphology of the region is presented in the Main Body of the Submission (RKI-MB-DOC), which includes a discussion that demonstrates clearly the natural prolongation of the continental shelf from the relevant land territory of the Republic of Kiribati.

6. The Outer Limits of the Continental Shelf

- 6.1 Scientific and technical data submitted by the Republic of Kiribati in support of this Submission establishes that the outer edge of the continental margin extends beyond 200 M measured from the territorial sea baseline. Accordingly, the Kiribati has defined the outer limits of the continental shelf by applying the rules of paragraphs 4 to 10 of Article 76 of the Convention.
- 6.2 In accordance with paragraph 7 of Article 76 of the Convention, the Republic of Kiribati has established the outer limits of the continental shelf beyond 200 M by fixed points defined by longitude and latitude connected by straight lines not exceeding 60 M. In this regard, Kiribati applied GEOCAP to determine the optimized location of the fixed points on the combined formula and constraint lines in addition to the 200 M of Kiribati and any relevant neighbouring coastal States.



6.3 The outer limits of the continental shelf of the Republic of Kiribati comprises four distinct areas (referred to in Section 5.4 above) and is defined by 688 Fixed Points ('FP') comprising the following areas:

- The Western Platform Area (FP_001 to FP_081), defined by 78 fixed points on the Hedberg line, one fixed point on the 200 M line measured from the Kiribati Territorial Sea baseline and one fixed point on the 200 M line of another coastal State.
- The Eastern Platform Area (FP_082 to FP_456), defined by 368 fixed points on the Hedberg line and two fixed points on the 200 M line measured from the Kiribati Territorial Sea baseline.
- The Central Area (FP_457 to FP_647), defined by 188 fixed points on the Hedberg line and two fixed points on the 200 M line measured from the Kiribati Territorial Sea baseline.
- The South Area (FP_648-FP_688), defined by 38 fixed points on the Hedberg line and two fixed points on the 200 M line measured from the Kiribati Territorial Sea baseline.

6.4 Coordinates of the Article 76 fixed points that have been constructed to define the outer limits of the continental shelf of the Republic of Kiribati are supplied in Tables 1 -4, which list the fixed points in both decimal degrees (DD) and in degrees, minutes and seconds (DMS), and specify the provisions of Article 76 invoked to support the establishment of each fixed point, together with the distance between adjacent points.

6.5 The combined area of continental shelf covered by the four distinct areas described in the Submission is approximately 121,631 sq. km.

7. Commissioners Who Provided Assistance during the Preparation of the Submission

7.1 The Republic of Kiribati was assisted in the preparation of this Submission by Mr Philip Alexander Symonds, a former Member of the Commission (2002-2012). A further list of officials and advisors who provided advice and assistance during the preparation of the Submission is referred to in the Preface to this Executive Summary.

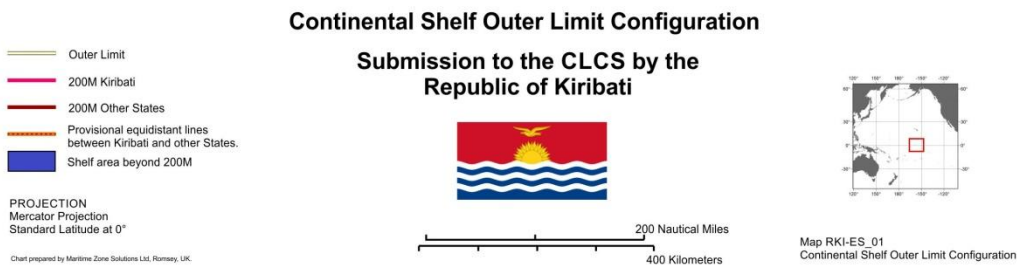
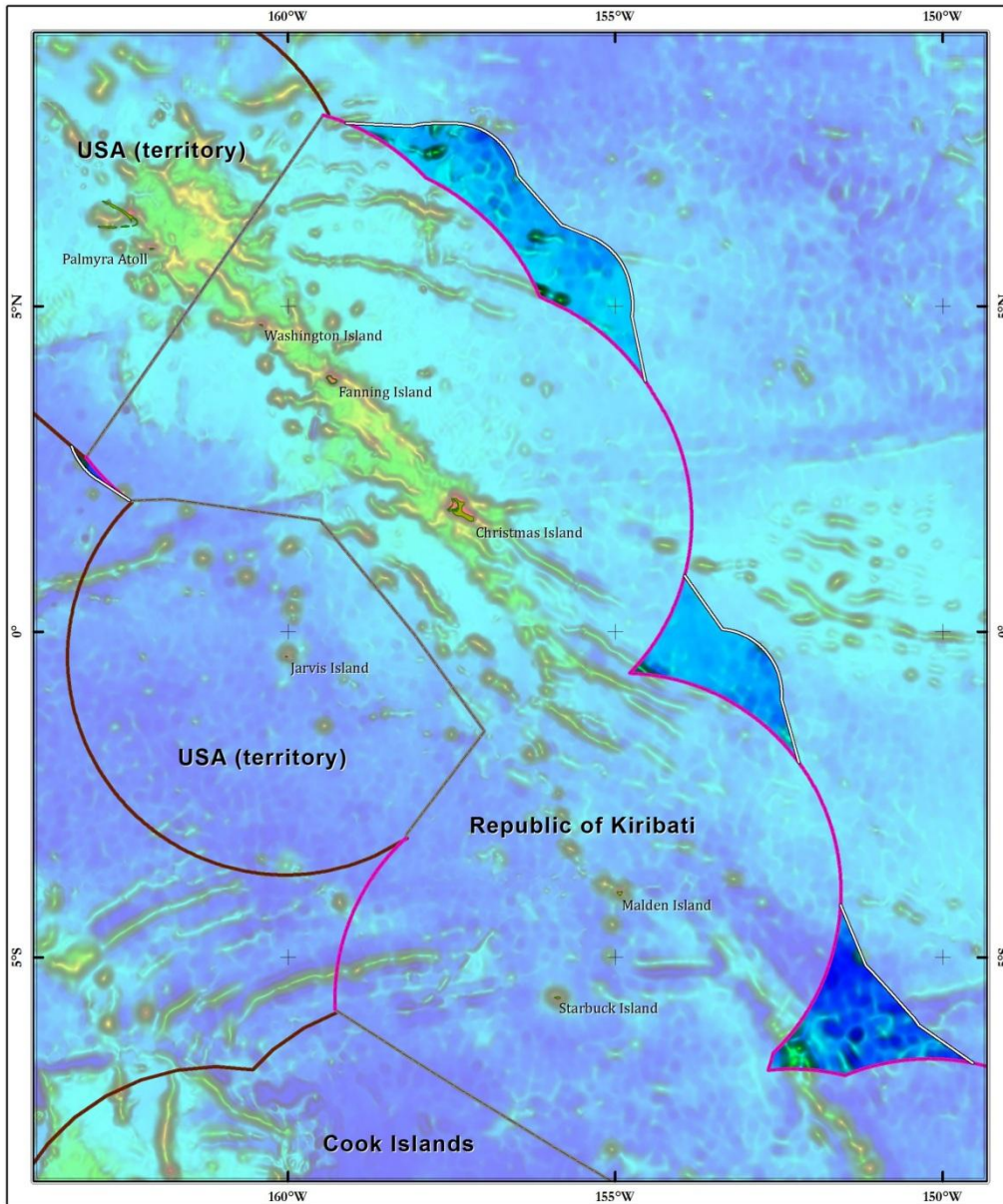


Figure 1: Map illustrating the outer limits of the continental shelf of the Republic of Kiribati showing the outer limit line and area of continental shelf extending beyond 200M from the territorial sea baseline (RKI-ES-MAP 1).

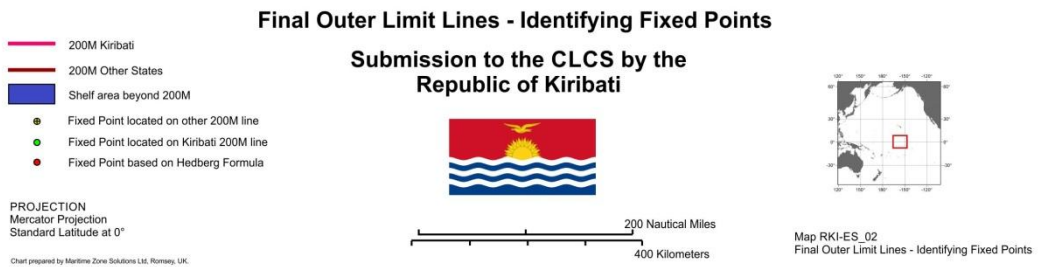
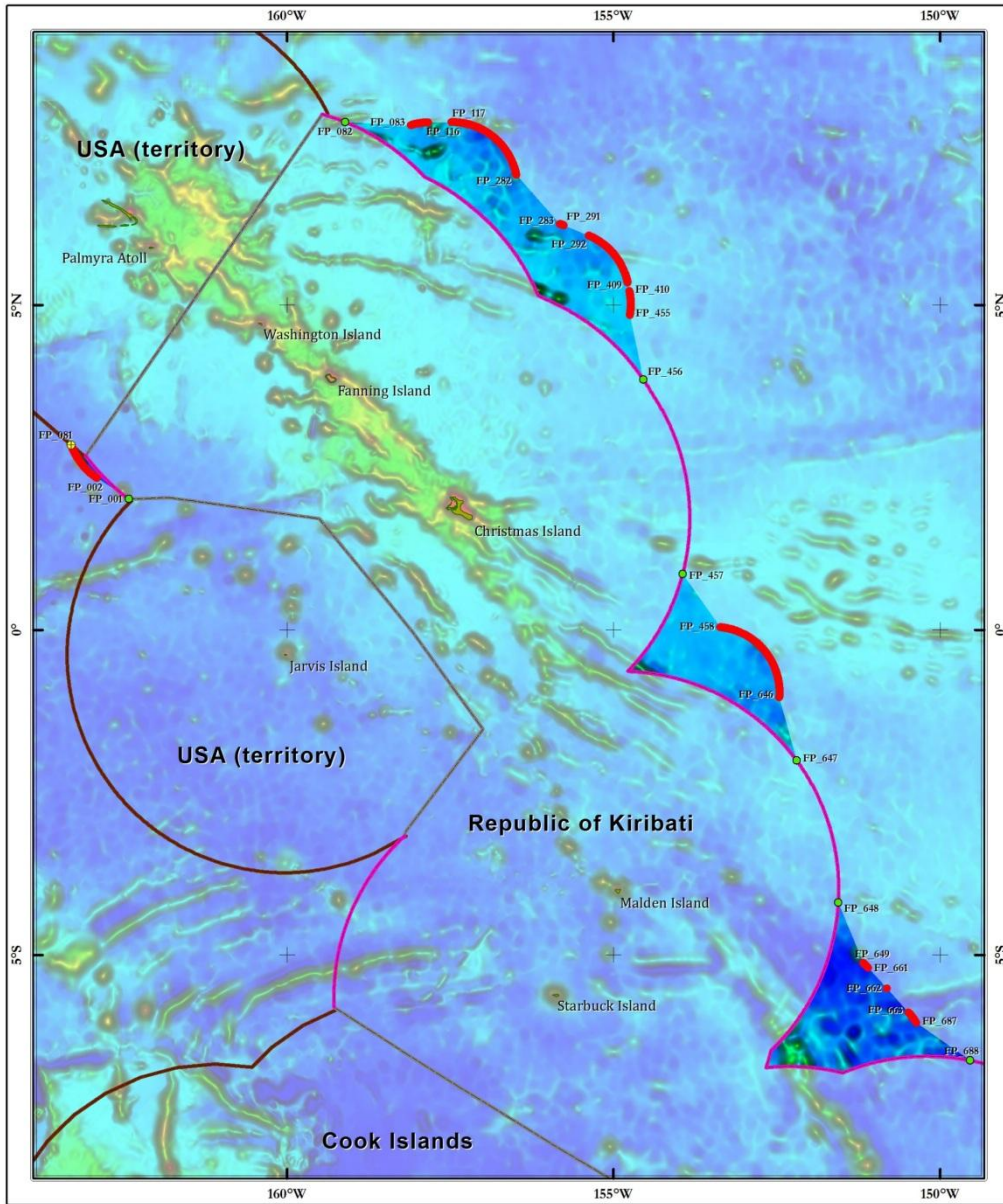


Figure 2. Map illustrating the fixed points defining the outer limits of the continental shelf of the Republic of Kiribati in addition to the elements used for their construction (RKI-ES-Map2).



OLCS Point	Latitude DD	Longitude DD	Distance From Previous (M)	Article 76 Provision Invoked
Western Platform				
FP_001	2° 00' 49.12" N	162° 25' 09.69" W	0.000	200 M
FP_002	2° 20' 11.61" N	162° 54' 20.37" W	34.999	60 M
FP_003	2° 20' 28.39" N	162° 54' 45.28" W	0.500	60 M
FP_004	2° 20' 45.37" N	162° 55' 10.04" W	0.500	60 M
FP_005	2° 21' 02.56" N	162° 55' 34.67" W	0.500	60 M
FP_006	2° 21' 19.95" N	162° 55' 59.15" W	0.500	60 M
FP_007	2° 21' 37.55" N	162° 56' 23.48" W	0.500	60 M
FP_008	2° 21' 55.34" N	162° 56' 47.67" W	0.500	60 M
FP_009	2° 22' 13.35" N	162° 57' 11.71" W	0.500	60 M
FP_010	2° 22' 31.55" N	162° 57' 35.61" W	0.500	60 M
FP_011	2° 22' 49.95" N	162° 57' 59.34" W	0.500	60 M
FP_012	2° 23' 08.55" N	162° 58' 22.93" W	0.500	60 M
FP_013	2° 23' 27.35" N	162° 58' 46.37" W	0.500	60 M
FP_014	2° 23' 46.35" N	162° 59' 09.64" W	0.500	60 M
FP_015	2° 24' 05.53" N	162° 59' 32.76" W	0.500	60 M
FP_016	2° 24' 24.91" N	162° 59' 55.72" W	0.500	60 M
FP_017	2° 24' 44.49" N	163° 00' 18.51" W	0.500	60 M
FP_018	2° 25' 04.25" N	163° 00' 41.15" W	0.500	60 M
FP_019	2° 25' 24.20" N	163° 01' 03.62" W	0.500	60 M
FP_020	2° 25' 44.34" N	163° 01' 25.92" W	0.500	60 M
FP_021	2° 26' 04.66" N	163° 01' 48.06" W	0.500	60 M
FP_022	2° 26' 25.17" N	163° 02' 10.03" W	0.500	60 M
FP_023	2° 26' 45.86" N	163° 02' 31.82" W	0.500	60 M
FP_024	2° 27' 06.74" N	163° 02' 53.45" W	0.500	60 M
FP_025	2° 27' 27.79" N	163° 03' 14.90" W	0.500	60 M
FP_026	2° 27' 49.03" N	163° 03' 36.18" W	0.500	60 M
FP_027	2° 28' 10.44" N	163° 03' 57.28" W	0.500	60 M
FP_028	2° 28' 32.03" N	163° 04' 18.20" W	0.500	60 M
FP_029	2° 28' 53.79" N	163° 04' 38.95" W	0.500	60 M
FP_030	2° 29' 15.73" N	163° 04' 59.51" W	0.500	60 M
FP_031	2° 29' 37.83" N	163° 05' 19.89" W	0.500	60 M
FP_032	2° 30' 00.11" N	163° 05' 40.08" W	0.500	60 M
FP_033	2° 30' 22.55" N	163° 06' 00.09" W	0.500	60 M



FP_034	2° 30' 45.17" N	163° 06' 19.92" W	0.500	60 M
FP_035	2° 31' 07.94" N	163° 06' 39.56" W	0.500	60 M
FP_036	2° 31' 30.88" N	163° 06' 59.00" W	0.500	60 M
FP_037	2° 31' 53.99" N	163° 07' 18.26" W	0.500	60 M
FP_038	2° 32' 17.25" N	163° 07' 37.33" W	0.500	60 M
FP_039	2° 32' 40.67" N	163° 07' 56.20" W	0.500	60 M
FP_040	2° 33' 04.25" N	163° 08' 14.88" W	0.500	60 M
FP_041	2° 33' 27.99" N	163° 08' 33.36" W	0.500	60 M
FP_042	2° 33' 51.88" N	163° 08' 51.64" W	0.500	60 M
FP_043	2° 34' 15.92" N	163° 09' 09.73" W	0.500	60 M
FP_044	2° 34' 40.11" N	163° 09' 27.62" W	0.500	60 M
FP_045	2° 35' 04.45" N	163° 09' 45.30" W	0.500	60 M
FP_046	2° 35' 28.94" N	163° 10' 02.78" W	0.500	60 M
FP_047	2° 35' 53.58" N	163° 10' 20.07" W	0.500	60 M
FP_048	2° 36' 18.35" N	163° 10' 37.14" W	0.500	60 M
FP_049	2° 36' 43.27" N	163° 10' 54.01" W	0.500	60 M
FP_050	2° 37' 08.33" N	163° 11' 10.68" W	0.500	60 M
FP_051	2° 37' 33.53" N	163° 11' 27.13" W	0.500	60 M
FP_052	2° 37' 58.87" N	163° 11' 43.38" W	0.500	60 M
FP_053	2° 38' 24.34" N	163° 11' 59.42" W	0.500	60 M
FP_054	2° 38' 49.95" N	163° 12' 15.24" W	0.500	60 M
FP_055	2° 39' 15.68" N	163° 12' 30.85" W	0.500	60 M
FP_056	2° 39' 41.55" N	163° 12' 46.25" W	0.500	60 M
FP_057	2° 40' 07.54" N	163° 13' 01.43" W	0.500	60 M
FP_058	2° 40' 33.66" N	163° 13' 16.40" W	0.500	60 M
FP_059	2° 40' 59.91" N	163° 13' 31.15" W	0.500	60 M
FP_060	2° 41' 26.28" N	163° 13' 45.69" W	0.500	60 M
FP_061	2° 41' 52.76" N	163° 14' 00.00" W	0.500	60 M
FP_062	2° 42' 19.37" N	163° 14' 14.10" W	0.500	60 M
FP_063	2° 42' 46.10" N	163° 14' 27.97" W	0.500	60 M
FP_064	2° 43' 12.94" N	163° 14' 41.62" W	0.500	60 M
FP_065	2° 43' 39.89" N	163° 14' 55.05" W	0.500	60 M
FP_066	2° 44' 06.96" N	163° 15' 08.26" W	0.500	60 M
FP_067	2° 44' 34.13" N	163° 15' 21.24" W	0.500	60 M
FP_068	2° 45' 01.41" N	163° 15' 34.00" W	0.500	60 M
FP_069	2° 45' 28.80" N	163° 15' 46.52" W	0.500	60 M



FP_070	2° 45' 56.29" N	163° 15' 58.83" W	0.500	60 M
FP_071	2° 46' 23.89" N	163° 16' 10.90" W	0.500	60 M
FP_072	2° 46' 51.58" N	163° 16' 22.75" W	0.500	60 M
FP_073	2° 47' 19.37" N	163° 16' 34.36" W	0.500	60 M
FP_074	2° 47' 47.26" N	163° 16' 45.75" W	0.500	60 M
FP_075	2° 48' 15.25" N	163° 16' 56.90" W	0.500	60 M
FP_076	2° 48' 43.32" N	163° 17' 07.82" W	0.500	60 M
FP_077	2° 49' 11.49" N	163° 17' 18.51" W	0.500	60 M
FP_078	2° 49' 39.74" N	163° 17' 28.97" W	0.500	60 M
FP_079	2° 50' 08.08" N	163° 17' 39.19" W	0.500	60 M
FP_080	2° 50' 36.51" N	163° 17' 49.17" W	0.500	60 M
FP_081	2° 50' 51.84" N	163° 17' 54.44" W	0.269	200 M other

Table 1. List of coordinates defining the outer limits of the extended continental shelf of the Republic of Kiribati in the Western Platform Area. All coordinates use the WGS 84 geodetic reference system.



OLCS Point	Latitude DD	Longitude DD	Distance From Previous (M)	Article 76 Provision Invoked
Eastern Platform				
FP_082	7° 47' 55.96" N	159° 06' 31.68" W	0.000	200 M
FP_083	7° 44' 59.61" N	158° 06' 09.66" W	59.995	60 M
FP_084	7° 45' 04.47" N	158° 05' 53.15" W	0.285	60 M
FP_085	7° 45' 12.77" N	158° 05' 24.09" W	0.500	60 M
FP_086	7° 45' 20.81" N	158° 04' 54.96" W	0.500	60 M
FP_087	7° 45' 28.62" N	158° 04' 25.77" W	0.500	60 M
FP_088	7° 45' 36.18" N	158° 03' 56.52" W	0.500	60 M
FP_089	7° 45' 43.50" N	158° 03' 27.20" W	0.500	60 M
FP_090	7° 45' 50.58" N	158° 02' 57.83" W	0.500	60 M
FP_091	7° 45' 57.40" N	158° 02' 28.39" W	0.500	60 M
FP_092	7° 46' 03.99" N	158° 01' 58.90" W	0.500	60 M
FP_093	7° 46' 10.32" N	158° 01' 29.35" W	0.500	60 M
FP_094	7° 46' 16.42" N	158° 00' 59.76" W	0.500	60 M
FP_095	7° 46' 22.26" N	158° 00' 30.11" W	0.500	60 M
FP_096	7° 46' 27.86" N	158° 00' 00.41" W	0.500	60 M
FP_097	7° 46' 33.21" N	157° 59' 30.67" W	0.500	60 M
FP_098	7° 46' 38.31" N	157° 59' 00.88" W	0.500	60 M
FP_099	7° 46' 43.16" N	157° 58' 31.06" W	0.500	60 M
FP_100	7° 46' 47.77" N	157° 58' 01.19" W	0.500	60 M
FP_101	7° 46' 52.12" N	157° 57' 31.29" W	0.500	60 M
FP_102	7° 46' 56.23" N	157° 57' 01.34" W	0.500	60 M
FP_103	7° 47' 00.09" N	157° 56' 31.37" W	0.500	60 M
FP_104	7° 47' 03.70" N	157° 56' 01.37" W	0.500	60 M
FP_105	7° 47' 07.05" N	157° 55' 31.33" W	0.500	60 M
FP_106	7° 47' 10.16" N	157° 55' 01.27" W	0.500	60 M
FP_107	7° 47' 13.02" N	157° 54' 31.19" W	0.500	60 M
FP_108	7° 47' 15.62" N	157° 54' 01.08" W	0.500	60 M
FP_109	7° 47' 17.98" N	157° 53' 30.95" W	0.500	60 M
FP_110	7° 47' 20.08" N	157° 53' 00.80" W	0.500	60 M
FP_111	7° 47' 21.93" N	157° 52' 30.64" W	0.500	60 M
FP_112	7° 47' 23.53" N	157° 52' 00.46" W	0.500	60 M
FP_113	7° 47' 24.89" N	157° 51' 30.26" W	0.500	60 M
FP_114	7° 47' 25.98" N	157° 51' 00.06" W	0.500	60 M



FP_115	7° 47' 26.83" N	157° 50' 29.84" W	0.500	60 M
FP_116	7° 47' 27.43" N	157° 49' 59.62" W	0.500	60 M
FP_117	7° 47' 41.09" N	157° 28' 49.96" W	21.006	60 M
FP_118	7° 47' 41.18" N	157° 28' 19.74" W	0.500	60 M
FP_119	7° 47' 41.02" N	157° 27' 49.52" W	0.500	60 M
FP_120	7° 47' 40.61" N	157° 27' 19.30" W	0.500	60 M
FP_121	7° 47' 39.95" N	157° 26' 49.09" W	0.500	60 M
FP_122	7° 47' 39.03" N	157° 26' 18.87" W	0.500	60 M
FP_123	7° 47' 37.87" N	157° 25' 48.68" W	0.500	60 M
FP_124	7° 47' 36.44" N	157° 25' 18.49" W	0.500	60 M
FP_125	7° 47' 34.78" N	157° 24' 48.32" W	0.500	60 M
FP_126	7° 47' 32.85" N	157° 24' 18.15" W	0.500	60 M
FP_127	7° 47' 30.68" N	157° 23' 48.00" W	0.500	60 M
FP_128	7° 47' 28.26" N	157° 23' 17.88" W	0.500	60 M
FP_129	7° 47' 25.58" N	157° 22' 47.77" W	0.500	60 M
FP_130	7° 47' 22.66" N	157° 22' 17.69" W	0.500	60 M
FP_131	7° 47' 19.48" N	157° 21' 47.63" W	0.500	60 M
FP_132	7° 47' 16.06" N	157° 21' 17.60" W	0.500	60 M
FP_133	7° 47' 12.38" N	157° 20' 47.61" W	0.500	60 M
FP_134	7° 47' 08.46" N	157° 20' 17.64" W	0.500	60 M
FP_135	7° 47' 04.28" N	157° 19' 47.71" W	0.500	60 M
FP_136	7° 46' 59.86" N	157° 19' 17.82" W	0.500	60 M
FP_137	7° 46' 55.18" N	157° 18' 47.96" W	0.500	60 M
FP_138	7° 46' 50.26" N	157° 18' 18.14" W	0.500	60 M
FP_139	7° 46' 45.09" N	157° 17' 48.36" W	0.500	60 M
FP_140	7° 46' 39.67" N	157° 17' 18.64" W	0.500	60 M
FP_141	7° 46' 34.01" N	157° 16' 48.95" W	0.500	60 M
FP_142	7° 46' 28.10" N	157° 16' 19.32" W	0.500	60 M
FP_143	7° 46' 21.94" N	157° 15' 49.74" W	0.500	60 M
FP_144	7° 46' 15.53" N	157° 15' 20.20" W	0.500	60 M
FP_145	7° 46' 08.88" N	157° 14' 50.72" W	0.500	60 M
FP_146	7° 46' 01.99" N	157° 14' 21.30" W	0.500	60 M
FP_147	7° 45' 54.85" N	157° 13' 51.95" W	0.500	60 M
FP_148	7° 45' 47.46" N	157° 13' 22.65" W	0.500	60 M
FP_149	7° 45' 39.83" N	157° 12' 53.41" W	0.500	60 M
FP_150	7° 45' 31.96" N	157° 12' 24.24" W	0.500	60 M



FP_151	7° 45' 23.85" N	157° 11' 55.14" W	0.500	60 M
FP_152	7° 45' 15.49" N	157° 11' 26.10" W	0.500	60 M
FP_153	7° 45' 06.89" N	157° 10' 57.14" W	0.500	60 M
FP_154	7° 44' 58.05" N	157° 10' 28.24" W	0.500	60 M
FP_155	7° 44' 48.97" N	157° 09' 59.42" W	0.500	60 M
FP_156	7° 44' 39.65" N	157° 09' 30.69" W	0.500	60 M
FP_157	7° 44' 30.09" N	157° 09' 02.03" W	0.500	60 M
FP_158	7° 44' 20.29" N	157° 08' 33.45" W	0.500	60 M
FP_159	7° 44' 10.26" N	157° 08' 04.95" W	0.500	60 M
FP_160	7° 43' 59.99" N	157° 07' 36.54" W	0.500	60 M
FP_161	7° 43' 49.48" N	157° 07' 08.22" W	0.500	60 M
FP_162	7° 43' 38.74" N	157° 06' 39.98" W	0.500	60 M
FP_163	7° 43' 27.76" N	157° 06' 11.84" W	0.500	60 M
FP_164	7° 43' 16.54" N	157° 05' 43.79" W	0.500	60 M
FP_165	7° 43' 05.10" N	157° 05' 15.84" W	0.500	60 M
FP_166	7° 42' 53.42" N	157° 04' 47.98" W	0.500	60 M
FP_167	7° 42' 41.51" N	157° 04' 20.22" W	0.500	60 M
FP_168	7° 42' 29.37" N	157° 03' 52.56" W	0.500	60 M
FP_169	7° 42' 17.00" N	157° 03' 25.00" W	0.500	60 M
FP_170	7° 42' 04.40" N	157° 02' 57.55" W	0.500	60 M
FP_171	7° 41' 51.57" N	157° 02' 30.21" W	0.500	60 M
FP_172	7° 41' 38.51" N	157° 02' 02.97" W	0.500	60 M
FP_173	7° 41' 25.23" N	157° 01' 35.85" W	0.500	60 M
FP_174	7° 41' 11.73" N	157° 01' 08.84" W	0.500	60 M
FP_175	7° 40' 57.99" N	157° 00' 41.94" W	0.500	60 M
FP_176	7° 40' 44.04" N	157° 00' 15.15" W	0.500	60 M
FP_177	7° 40' 29.86" N	156° 59' 48.49" W	0.500	60 M
FP_178	7° 40' 15.46" N	156° 59' 21.95" W	0.500	60 M
FP_179	7° 40' 00.84" N	156° 58' 55.53" W	0.500	60 M
FP_180	7° 39' 46.00" N	156° 58' 29.23" W	0.500	60 M
FP_181	7° 39' 30.94" N	156° 58' 03.05" W	0.500	60 M
FP_182	7° 39' 15.66" N	156° 57' 37.00" W	0.500	60 M
FP_183	7° 39' 00.17" N	156° 57' 11.09" W	0.500	60 M
FP_184	7° 38' 44.46" N	156° 56' 45.29" W	0.500	60 M
FP_185	7° 38' 28.54" N	156° 56' 19.65" W	0.500	60 M
FP_186	7° 38' 12.41" N	156° 55' 54.13" W	0.500	60 M



FP_187	7° 37' 56.06" N	156° 55' 28.74" W	0.500	60 M
FP_188	7° 37' 39.50" N	156° 55' 03.50" W	0.500	60 M
FP_189	7° 37' 22.73" N	156° 54' 38.39" W	0.500	60 M
FP_190	7° 37' 05.75" N	156° 54' 13.42" W	0.500	60 M
FP_191	7° 36' 48.57" N	156° 53' 48.60" W	0.500	60 M
FP_192	7° 36' 31.18" N	156° 53' 23.93" W	0.500	60 M
FP_193	7° 36' 13.58" N	156° 52' 59.40" W	0.500	60 M
FP_194	7° 35' 55.78" N	156° 52' 35.01" W	0.500	60 M
FP_195	7° 35' 37.78" N	156° 52' 10.78" W	0.500	60 M
FP_196	7° 35' 19.58" N	156° 51' 46.71" W	0.500	60 M
FP_197	7° 35' 01.18" N	156° 51' 22.77" W	0.500	60 M
FP_198	7° 34' 42.58" N	156° 50' 59.00" W	0.500	60 M
FP_199	7° 34' 23.78" N	156° 50' 35.39" W	0.500	60 M
FP_200	7° 34' 04.79" N	156° 50' 11.93" W	0.500	60 M
FP_201	7° 33' 45.60" N	156° 49' 48.63" W	0.500	60 M
FP_202	7° 33' 26.22" N	156° 49' 25.50" W	0.500	60 M
FP_203	7° 33' 06.64" N	156° 49' 02.53" W	0.500	60 M
FP_204	7° 32' 46.88" N	156° 48' 39.73" W	0.500	60 M
FP_205	7° 32' 26.92" N	156° 48' 17.08" W	0.500	60 M
FP_206	7° 32' 06.78" N	156° 47' 54.61" W	0.500	60 M
FP_207	7° 31' 46.45" N	156° 47' 32.31" W	0.500	60 M
FP_208	7° 31' 25.94" N	156° 47' 10.18" W	0.500	60 M
FP_209	7° 31' 05.24" N	156° 46' 48.22" W	0.500	60 M
FP_210	7° 30' 44.36" N	156° 46' 26.43" W	0.500	60 M
FP_211	7° 30' 23.30" N	156° 46' 04.82" W	0.500	60 M
FP_212	7° 30' 02.06" N	156° 45' 43.39" W	0.500	60 M
FP_213	7° 29' 40.64" N	156° 45' 22.14" W	0.500	60 M
FP_214	7° 29' 19.05" N	156° 45' 01.07" W	0.500	60 M
FP_215	7° 28' 57.28" N	156° 44' 40.17" W	0.500	60 M
FP_216	7° 28' 35.34" N	156° 44' 19.47" W	0.500	60 M
FP_217	7° 28' 13.23" N	156° 43' 58.94" W	0.500	60 M
FP_218	7° 27' 50.94" N	156° 43' 38.61" W	0.500	60 M
FP_219	7° 27' 28.49" N	156° 43' 18.45" W	0.500	60 M
FP_220	7° 27' 05.87" N	156° 42' 58.49" W	0.500	60 M
FP_221	7° 26' 43.09" N	156° 42' 38.72" W	0.500	60 M
FP_222	7° 26' 20.14" N	156° 42' 19.14" W	0.500	60 M



FP_223	7° 25' 57.03" N	156° 41' 59.75" W	0.500	60 M
FP_224	7° 25' 33.76" N	156° 41' 40.56" W	0.500	60 M
FP_225	7° 25' 10.33" N	156° 41' 21.56" W	0.500	60 M
FP_226	7° 24' 46.74" N	156° 41' 02.76" W	0.500	60 M
FP_227	7° 24' 23.00" N	156° 40' 44.16" W	0.500	60 M
FP_228	7° 23' 59.10" N	156° 40' 25.76" W	0.500	60 M
FP_229	7° 23' 35.05" N	156° 40' 07.55" W	0.500	60 M
FP_230	7° 23' 10.85" N	156° 39' 49.56" W	0.500	60 M
FP_231	7° 22' 46.50" N	156° 39' 31.75" W	0.500	60 M
FP_232	7° 22' 22.00" N	156° 39' 14.16" W	0.500	60 M
FP_233	7° 21' 57.36" N	156° 38' 56.77" W	0.500	60 M
FP_234	7° 21' 32.57" N	156° 38' 39.59" W	0.500	60 M
FP_235	7° 21' 07.64" N	156° 38' 22.62" W	0.500	60 M
FP_236	7° 20' 42.57" N	156° 38' 05.85" W	0.500	60 M
FP_237	7° 20' 17.36" N	156° 37' 49.30" W	0.500	60 M
FP_238	7° 19' 52.01" N	156° 37' 32.95" W	0.500	60 M
FP_239	7° 19' 26.53" N	156° 37' 16.83" W	0.500	60 M
FP_240	7° 19' 00.92" N	156° 37' 00.91" W	0.500	60 M
FP_241	7° 18' 35.17" N	156° 36' 45.21" W	0.500	60 M
FP_242	7° 18' 09.30" N	156° 36' 29.73" W	0.500	60 M
FP_243	7° 17' 43.29" N	156° 36' 14.46" W	0.500	60 M
FP_244	7° 17' 17.16" N	156° 35' 59.41" W	0.500	60 M
FP_245	7° 16' 50.91" N	156° 35' 44.58" W	0.500	60 M
FP_246	7° 16' 24.53" N	156° 35' 29.97" W	0.500	60 M
FP_247	7° 15' 58.04" N	156° 35' 15.58" W	0.500	60 M
FP_248	7° 15' 31.42" N	156° 35' 01.41" W	0.500	60 M
FP_249	7° 15' 04.69" N	156° 34' 47.47" W	0.500	60 M
FP_250	7° 14' 37.84" N	156° 34' 33.75" W	0.500	60 M
FP_251	7° 14' 10.88" N	156° 34' 20.25" W	0.500	60 M
FP_252	7° 13' 43.80" N	156° 34' 06.99" W	0.500	60 M
FP_253	7° 13' 16.62" N	156° 33' 53.94" W	0.500	60 M
FP_254	7° 12' 49.33" N	156° 33' 41.13" W	0.500	60 M
FP_255	7° 12' 21.93" N	156° 33' 28.54" W	0.500	60 M
FP_256	7° 11' 54.43" N	156° 33' 16.18" W	0.500	60 M
FP_257	7° 11' 26.83" N	156° 33' 04.06" W	0.500	60 M
FP_258	7° 10' 59.13" N	156° 32' 52.16" W	0.500	60 M



FP_259	7° 10' 31.32" N	156° 32' 40.49" W	0.500	60 M
FP_260	7° 10' 03.43" N	156° 32' 29.07" W	0.500	60 M
FP_261	7° 09' 35.44" N	156° 32' 17.87" W	0.500	60 M
FP_262	7° 09' 07.35" N	156° 32' 06.91" W	0.500	60 M
FP_263	7° 08' 39.18" N	156° 31' 56.18" W	0.500	60 M
FP_264	7° 08' 10.92" N	156° 31' 45.69" W	0.500	60 M
FP_265	7° 07' 42.57" N	156° 31' 35.43" W	0.500	60 M
FP_266	7° 07' 14.13" N	156° 31' 25.41" W	0.500	60 M
FP_267	7° 06' 45.61" N	156° 31' 15.63" W	0.500	60 M
FP_268	7° 06' 17.02" N	156° 31' 06.09" W	0.500	60 M
FP_269	7° 05' 48.34" N	156° 30' 56.78" W	0.500	60 M
FP_270	7° 05' 19.59" N	156° 30' 47.72" W	0.500	60 M
FP_271	7° 04' 50.76" N	156° 30' 38.90" W	0.500	60 M
FP_272	7° 04' 21.87" N	156° 30' 30.31" W	0.500	60 M
FP_273	7° 03' 52.90" N	156° 30' 21.98" W	0.500	60 M
FP_274	7° 03' 23.86" N	156° 30' 13.88" W	0.500	60 M
FP_275	7° 02' 54.75" N	156° 30' 06.03" W	0.500	60 M
FP_276	7° 02' 25.59" N	156° 29' 58.41" W	0.500	60 M
FP_277	7° 01' 56.36" N	156° 29' 51.04" W	0.500	60 M
FP_278	7° 01' 27.07" N	156° 29' 43.91" W	0.500	60 M
FP_279	7° 00' 57.71" N	156° 29' 37.04" W	0.500	60 M
FP_280	7° 00' 28.31" N	156° 29' 30.40" W	0.500	60 M
FP_281	6° 59' 58.85" N	156° 29' 24.02" W	0.500	60 M
FP_282	6° 59' 29.34" N	156° 29' 17.87" W	0.500	60 M
FP_283	6° 14' 28.60" N	155° 49' 27.61" W	59.821	60 M
FP_284	6° 14' 18.88" N	155° 48' 59.10" W	0.500	60 M
FP_285	6° 14' 08.93" N	155° 48' 30.66" W	0.500	60 M
FP_286	6° 13' 58.74" N	155° 48' 02.32" W	0.500	60 M
FP_287	6° 13' 48.31" N	155° 47' 34.05" W	0.500	60 M
FP_288	6° 13' 37.64" N	155° 47' 05.87" W	0.500	60 M
FP_289	6° 13' 26.74" N	155° 46' 37.79" W	0.500	60 M
FP_290	6° 13' 15.61" N	155° 46' 09.80" W	0.500	60 M
FP_291	6° 13' 04.24" N	155° 45' 41.90" W	0.500	60 M
FP_292	6° 03' 43.94" N	155° 22' 58.76" W	24.464	60 M
FP_293	6° 03' 32.35" N	155° 22' 30.96" W	0.500	60 M
FP_294	6° 03' 20.53" N	155° 22' 03.26" W	0.500	60 M



FP_295	6° 03' 08.47" N	155° 21' 35.66" W	0.500	60 M
FP_296	6° 02' 56.19" N	155° 21' 08.16" W	0.500	60 M
FP_297	6° 02' 43.67" N	155° 20' 40.77" W	0.500	60 M
FP_298	6° 02' 30.93" N	155° 20' 13.48" W	0.500	60 M
FP_299	6° 02' 17.96" N	155° 19' 46.30" W	0.500	60 M
FP_300	6° 02' 04.76" N	155° 19' 19.22" W	0.500	60 M
FP_301	6° 01' 51.34" N	155° 18' 52.26" W	0.500	60 M
FP_302	6° 01' 37.69" N	155° 18' 25.42" W	0.500	60 M
FP_303	6° 01' 23.82" N	155° 17' 58.68" W	0.500	60 M
FP_304	6° 01' 09.73" N	155° 17' 32.07" W	0.500	60 M
FP_305	6° 00' 55.41" N	155° 17' 05.56" W	0.500	60 M
FP_306	6° 00' 40.87" N	155° 16' 39.18" W	0.500	60 M
FP_307	6° 00' 26.11" N	155° 16' 12.92" W	0.500	60 M
FP_308	6° 00' 11.14" N	155° 15' 46.79" W	0.500	60 M
FP_309	5° 59' 55.94" N	155° 15' 20.78" W	0.500	60 M
FP_310	5° 59' 40.53" N	155° 14' 54.90" W	0.500	60 M
FP_311	5° 59' 24.90" N	155° 14' 29.15" W	0.500	60 M
FP_312	5° 59' 09.06" N	155° 14' 03.54" W	0.500	60 M
FP_313	5° 58' 53.01" N	155° 13' 38.06" W	0.500	60 M
FP_314	5° 58' 36.74" N	155° 13' 12.70" W	0.500	60 M
FP_315	5° 58' 20.27" N	155° 12' 47.50" W	0.500	60 M
FP_316	5° 58' 03.58" N	155° 12' 22.42" W	0.500	60 M
FP_317	5° 57' 46.68" N	155° 11' 57.48" W	0.500	60 M
FP_318	5° 57' 29.58" N	155° 11' 32.69" W	0.500	60 M
FP_319	5° 57' 12.26" N	155° 11' 08.04" W	0.500	60 M
FP_320	5° 56' 54.75" N	155° 10' 43.54" W	0.500	60 M
FP_321	5° 56' 37.02" N	155° 10' 19.18" W	0.500	60 M
FP_322	5° 56' 19.10" N	155° 09' 54.98" W	0.500	60 M
FP_323	5° 56' 00.98" N	155° 09' 30.92" W	0.500	60 M
FP_324	5° 55' 42.65" N	155° 09' 07.01" W	0.500	60 M
FP_325	5° 55' 24.13" N	155° 08' 43.27" W	0.500	60 M
FP_326	5° 55' 05.41" N	155° 08' 19.68" W	0.500	60 M
FP_327	5° 54' 46.49" N	155° 07' 56.23" W	0.500	60 M
FP_328	5° 54' 27.37" N	155° 07' 32.95" W	0.500	60 M
FP_329	5° 54' 08.07" N	155° 07' 09.83" W	0.500	60 M
FP_330	5° 53' 48.57" N	155° 06' 46.88" W	0.500	60 M



FP_331	5° 53' 28.88" N	155° 06' 24.09" W	0.500	60 M
FP_332	5° 53' 08.99" N	155° 06' 01.46" W	0.500	60 M
FP_333	5° 52' 48.92" N	155° 05' 38.99" W	0.500	60 M
FP_334	5° 52' 28.66" N	155° 05' 16.69" W	0.500	60 M
FP_335	5° 52' 08.22" N	155° 04' 54.57" W	0.500	60 M
FP_336	5° 51' 47.60" N	155° 04' 32.62" W	0.500	60 M
FP_337	5° 51' 26.79" N	155° 04' 10.84" W	0.500	60 M
FP_338	5° 51' 05.80" N	155° 03' 49.24" W	0.500	60 M
FP_339	5° 50' 44.63" N	155° 03' 27.81" W	0.500	60 M
FP_340	5° 50' 23.28" N	155° 03' 06.55" W	0.500	60 M
FP_341	5° 50' 01.75" N	155° 02' 45.48" W	0.500	60 M
FP_342	5° 49' 40.06" N	155° 02' 24.59" W	0.500	60 M
FP_343	5° 49' 18.18" N	155° 02' 03.88" W	0.500	60 M
FP_344	5° 48' 56.13" N	155° 01' 43.35" W	0.500	60 M
FP_345	5° 48' 33.92" N	155° 01' 23.01" W	0.500	60 M
FP_346	5° 48' 11.53" N	155° 01' 02.84" W	0.500	60 M
FP_347	5° 47' 48.98" N	155° 00' 42.88" W	0.500	60 M
FP_348	5° 47' 26.26" N	155° 00' 23.09" W	0.500	60 M
FP_349	5° 47' 03.37" N	155° 00' 03.50" W	0.500	60 M
FP_350	5° 46' 40.32" N	154° 59' 44.10" W	0.500	60 M
FP_351	5° 46' 17.11" N	154° 59' 24.90" W	0.500	60 M
FP_352	5° 45' 53.75" N	154° 59' 05.88" W	0.500	60 M
FP_353	5° 45' 30.22" N	154° 58' 47.07" W	0.500	60 M
FP_354	5° 45' 06.54" N	154° 58' 28.45" W	0.500	60 M
FP_355	5° 44' 42.70" N	154° 58' 10.02" W	0.500	60 M
FP_356	5° 44' 18.71" N	154° 57' 51.80" W	0.500	60 M
FP_357	5° 43' 54.57" N	154° 57' 33.78" W	0.500	60 M
FP_358	5° 43' 30.27" N	154° 57' 15.95" W	0.500	60 M
FP_359	5° 43' 05.83" N	154° 56' 58.34" W	0.500	60 M
FP_360	5° 42' 41.24" N	154° 56' 40.92" W	0.500	60 M
FP_361	5° 42' 16.51" N	154° 56' 23.72" W	0.500	60 M
FP_362	5° 41' 51.64" N	154° 56' 06.71" W	0.500	60 M
FP_363	5° 41' 26.62" N	154° 55' 49.92" W	0.500	60 M
FP_364	5° 41' 01.47" N	154° 55' 33.33" W	0.500	60 M
FP_365	5° 40' 36.18" N	154° 55' 16.96" W	0.500	60 M
FP_366	5° 40' 10.74" N	154° 55' 00.80" W	0.500	60 M



FP_367	5° 39' 45.18" N	154° 54' 44.85" W	0.500	60 M
FP_368	5° 39' 19.49" N	154° 54' 29.11" W	0.500	60 M
FP_369	5° 38' 53.66" N	154° 54' 13.59" W	0.500	60 M
FP_370	5° 38' 27.71" N	154° 53' 58.29" W	0.500	60 M
FP_371	5° 38' 01.62" N	154° 53' 43.19" W	0.500	60 M
FP_372	5° 37' 35.42" N	154° 53' 28.32" W	0.500	60 M
FP_373	5° 37' 09.09" N	154° 53' 13.67" W	0.500	60 M
FP_374	5° 36' 42.64" N	154° 52' 59.23" W	0.500	60 M
FP_375	5° 36' 16.07" N	154° 52' 45.02" W	0.500	60 M
FP_376	5° 35' 49.37" N	154° 52' 31.03" W	0.500	60 M
FP_377	5° 35' 22.57" N	154° 52' 17.27" W	0.500	60 M
FP_378	5° 34' 55.65" N	154° 52' 03.72" W	0.500	60 M
FP_379	5° 34' 28.62" N	154° 51' 50.41" W	0.500	60 M
FP_380	5° 34' 01.48" N	154° 51' 37.31" W	0.500	60 M
FP_381	5° 33' 34.23" N	154° 51' 24.45" W	0.500	60 M
FP_382	5° 33' 06.88" N	154° 51' 11.80" W	0.500	60 M
FP_383	5° 32' 39.41" N	154° 50' 59.39" W	0.500	60 M
FP_384	5° 32' 11.85" N	154° 50' 47.21" W	0.500	60 M
FP_385	5° 31' 44.19" N	154° 50' 35.26" W	0.500	60 M
FP_386	5° 31' 16.42" N	154° 50' 23.54" W	0.500	60 M
FP_387	5° 30' 48.56" N	154° 50' 12.05" W	0.500	60 M
FP_388	5° 30' 20.61" N	154° 50' 00.79" W	0.500	60 M
FP_389	5° 29' 52.56" N	154° 49' 49.77" W	0.500	60 M
FP_390	5° 29' 24.42" N	154° 49' 38.98" W	0.500	60 M
FP_391	5° 28' 56.19" N	154° 49' 28.42" W	0.500	60 M
FP_392	5° 28' 27.88" N	154° 49' 18.11" W	0.500	60 M
FP_393	5° 27' 59.47" N	154° 49' 08.02" W	0.500	60 M
FP_394	5° 27' 30.99" N	154° 48' 58.17" W	0.500	60 M
FP_395	5° 27' 02.42" N	154° 48' 48.56" W	0.500	60 M
FP_396	5° 26' 33.78" N	154° 48' 39.19" W	0.500	60 M
FP_397	5° 26' 05.06" N	154° 48' 30.06" W	0.500	60 M
FP_398	5° 25' 36.26" N	154° 48' 21.16" W	0.500	60 M
FP_399	5° 25' 07.39" N	154° 48' 12.51" W	0.500	60 M
FP_400	5° 24' 38.44" N	154° 48' 04.10" W	0.500	60 M
FP_401	5° 24' 09.43" N	154° 47' 55.92" W	0.500	60 M
FP_402	5° 23' 40.35" N	154° 47' 47.99" W	0.500	60 M



FP_403	5° 23' 11.21" N	154° 47' 40.30" W	0.500	60 M
FP_404	5° 22' 42.00" N	154° 47' 32.86" W	0.500	60 M
FP_405	5° 22' 12.73" N	154° 47' 25.66" W	0.500	60 M
FP_406	5° 21' 43.41" N	154° 47' 18.70" W	0.500	60 M
FP_407	5° 21' 14.02" N	154° 47' 11.99" W	0.500	60 M
FP_408	5° 20' 44.58" N	154° 47' 05.51" W	0.500	60 M
FP_409	5° 20' 15.09" N	154° 46' 59.29" W	0.500	60 M
FP_410	5° 12' 40.85" N	154° 45' 25.13" W	7.695	60 M
FP_411	5° 12' 11.31" N	154° 45' 19.14" W	0.500	60 M
FP_412	5° 11' 41.72" N	154° 45' 13.41" W	0.500	60 M
FP_413	5° 11' 12.08" N	154° 45' 07.91" W	0.500	60 M
FP_414	5° 10' 42.40" N	154° 45' 02.67" W	0.500	60 M
FP_415	5° 10' 12.67" N	154° 44' 57.67" W	0.500	60 M
FP_416	5° 09' 42.90" N	154° 44' 52.91" W	0.500	60 M
FP_417	5° 09' 13.10" N	154° 44' 48.41" W	0.500	60 M
FP_418	5° 08' 43.26" N	154° 44' 44.16" W	0.500	60 M
FP_419	5° 08' 13.38" N	154° 44' 40.15" W	0.500	60 M
FP_420	5° 07' 43.47" N	154° 44' 36.39" W	0.500	60 M
FP_421	5° 07' 13.53" N	154° 44' 32.88" W	0.500	60 M
FP_422	5° 06' 43.56" N	154° 44' 29.62" W	0.500	60 M
FP_423	5° 06' 13.57" N	154° 44' 26.61" W	0.500	60 M
FP_424	5° 05' 43.55" N	154° 44' 23.85" W	0.500	60 M
FP_425	5° 05' 13.51" N	154° 44' 21.34" W	0.500	60 M
FP_426	5° 04' 43.45" N	154° 44' 19.07" W	0.500	60 M
FP_427	5° 04' 13.37" N	154° 44' 17.06" W	0.500	60 M
FP_428	5° 03' 43.28" N	154° 44' 15.30" W	0.500	60 M
FP_429	5° 03' 13.17" N	154° 44' 13.78" W	0.500	60 M
FP_430	5° 02' 43.05" N	154° 44' 12.52" W	0.500	60 M
FP_431	5° 02' 12.92" N	154° 44' 11.50" W	0.500	60 M
FP_432	5° 01' 42.79" N	154° 44' 10.74" W	0.500	60 M
FP_433	5° 01' 12.65" N	154° 44' 10.24" W	0.500	60 M
FP_434	5° 00' 42.50" N	154° 44' 09.97" W	0.500	60 M
FP_435	5° 00' 12.36" N	154° 44' 09.96" W	0.500	60 M
FP_436	4° 59' 42.21" N	154° 44' 10.20" W	0.500	60 M
FP_437	4° 59' 12.07" N	154° 44' 10.69" W	0.500	60 M
FP_438	4° 58' 41.93" N	154° 44' 11.43" W	0.500	60 M



FP_439	4° 58' 11.81" N	154° 44' 12.43" W	0.500	60 M
FP_440	4° 57' 41.69" N	154° 44' 13.66" W	0.500	60 M
FP_441	4° 57' 11.58" N	154° 44' 15.16" W	0.500	60 M
FP_442	4° 56' 41.48" N	154° 44' 16.90" W	0.500	60 M
FP_443	4° 56' 11.40" N	154° 44' 18.89" W	0.500	60 M
FP_444	4° 55' 41.34" N	154° 44' 21.13" W	0.500	60 M
FP_445	4° 55' 11.30" N	154° 44' 23.62" W	0.500	60 M
FP_446	4° 54' 41.28" N	154° 44' 26.36" W	0.500	60 M
FP_447	4° 54' 11.28" N	154° 44' 29.35" W	0.500	60 M
FP_448	4° 53' 41.31" N	154° 44' 32.59" W	0.500	60 M
FP_449	4° 53' 11.37" N	154° 44' 36.07" W	0.500	60 M
FP_450	4° 52' 41.45" N	154° 44' 39.81" W	0.500	60 M
FP_451	4° 52' 11.57" N	154° 44' 43.80" W	0.500	60 M
FP_452	4° 51' 41.73" N	154° 44' 48.03" W	0.500	60 M
FP_453	4° 51' 11.92" N	154° 44' 52.51" W	0.500	60 M
FP_454	4° 50' 42.15" N	154° 44' 57.24" W	0.500	60 M
FP_455	4° 50' 12.42" N	154° 45' 02.21" W	0.500	60 M
FP_456	3° 51' 11.88" N	154° 32' 42.94" W	59.998	200 M

Table 2. List of coordinates defining the outer limits of the extended continental shelf for the Eastern Platform Area. All coordinates use the WGS 84 geodetic reference system.



OLCS Point	Latitude DD	Longitude DD	Distance From Previous (M)	Article 76 Provision Invoked
Central Area				
FP_457	0° 51' 31.62" N	153° 56' 38.60" W	0.000	200 M
FP_458	0° 02' 17.76" N	153° 22' 05.15" W	59.986	60 M
FP_459	0° 02' 17.70" N	153° 22' 04.42" W	0.012	60 M
FP_460	0° 02' 14.83" N	153° 21' 34.61" W	0.500	60 M
FP_461	0° 02' 11.70" N	153° 21' 04.83" W	0.500	60 M
FP_462	0° 02' 08.33" N	153° 20' 35.06" W	0.500	60 M
FP_463	0° 02' 04.71" N	153° 20' 05.34" W	0.500	60 M
FP_464	0° 02' 00.83" N	153° 19' 35.63" W	0.500	60 M
FP_465	0° 01' 56.71" N	153° 19' 05.97" W	0.500	60 M
FP_466	0° 01' 52.34" N	153° 18' 36.34" W	0.500	60 M
FP_467	0° 01' 47.73" N	153° 18' 06.75" W	0.500	60 M
FP_468	0° 01' 42.86" N	153° 17' 37.20" W	0.500	60 M
FP_469	0° 01' 37.74" N	153° 17' 07.68" W	0.500	60 M
FP_470	0° 01' 32.39" N	153° 16' 38.21" W	0.500	60 M
FP_471	0° 01' 26.78" N	153° 16' 08.78" W	0.500	60 M
FP_472	0° 01' 20.92" N	153° 15' 39.41" W	0.500	60 M
FP_473	0° 01' 14.82" N	153° 15' 10.09" W	0.500	60 M
FP_474	0° 01' 08.47" N	153° 14' 40.81" W	0.500	60 M
FP_475	0° 01' 01.88" N	153° 14' 11.59" W	0.500	60 M
FP_476	0° 00' 55.05" N	153° 13' 42.42" W	0.500	60 M
FP_477	0° 00' 47.97" N	153° 13' 13.32" W	0.500	60 M
FP_478	0° 00' 40.64" N	153° 12' 44.26" W	0.500	60 M
FP_479	0° 00' 33.07" N	153° 12' 15.28" W	0.500	60 M
FP_480	0° 00' 25.26" N	153° 11' 46.36" W	0.500	60 M
FP_481	0° 00' 17.21" N	153° 11' 17.50" W	0.500	60 M
FP_482	0° 00' 08.91" N	153° 10' 48.71" W	0.500	60 M
FP_483	0° 00' 00.37" N	153° 10' 19.99" W	0.500	60 M
FP_484	0° 00' 08.40" S	153° 09' 51.34" W	0.500	60 M
FP_485	0° 00' 17.42" S	153° 09' 22.77" W	0.500	60 M
FP_486	0° 00' 26.68" S	153° 08' 54.26" W	0.500	60 M
FP_487	0° 00' 36.17" S	153° 08' 25.84" W	0.500	60 M
FP_488	0° 00' 45.91" S	153° 07' 57.50" W	0.500	60 M
FP_489	0° 00' 55.88" S	153° 07' 29.23" W	0.500	60 M
FP_490	0° 01' 06.09" S	153° 07' 01.06" W	0.500	60 M



FP_491	0° 01' 16.53" S	153° 06' 32.96" W	0.500	60 M
FP_492	0° 01' 27.21" S	153° 06' 04.96" W	0.500	60 M
FP_493	0° 01' 38.13" S	153° 05' 37.05" W	0.500	60 M
FP_494	0° 01' 49.27" S	153° 05' 09.22" W	0.500	60 M
FP_495	0° 02' 00.65" S	153° 04' 41.49" W	0.500	60 M
FP_496	0° 02' 12.27" S	153° 04' 13.86" W	0.500	60 M
FP_497	0° 02' 24.11" S	153° 03' 46.31" W	0.500	60 M
FP_498	0° 02' 36.19" S	153° 03' 18.87" W	0.500	60 M
FP_499	0° 02' 48.49" S	153° 02' 51.54" W	0.500	60 M
FP_500	0° 03' 01.03" S	153° 02' 24.30" W	0.500	60 M
FP_501	0° 03' 13.79" S	153° 01' 57.17" W	0.500	60 M
FP_502	0° 03' 26.77" S	153° 01' 30.15" W	0.500	60 M
FP_503	0° 03' 39.99" S	153° 01' 03.24" W	0.500	60 M
FP_504	0° 03' 53.43" S	153° 00' 36.43" W	0.500	60 M
FP_505	0° 04' 07.09" S	153° 00' 09.73" W	0.500	60 M
FP_506	0° 04' 20.98" S	152° 59' 43.16" W	0.500	60 M
FP_507	0° 04' 35.09" S	152° 59' 16.69" W	0.500	60 M
FP_508	0° 04' 49.43" S	152° 58' 50.34" W	0.500	60 M
FP_509	0° 05' 03.98" S	152° 58' 24.12" W	0.500	60 M
FP_510	0° 05' 18.75" S	152° 57' 58.02" W	0.500	60 M
FP_511	0° 05' 33.74" S	152° 57' 32.03" W	0.500	60 M
FP_512	0° 05' 48.95" S	152° 57' 06.18" W	0.500	60 M
FP_513	0° 06' 04.37" S	152° 56' 40.45" W	0.500	60 M
FP_514	0° 06' 20.01" S	152° 56' 14.85" W	0.500	60 M
FP_515	0° 06' 35.86" S	152° 55' 49.38" W	0.500	60 M
FP_516	0° 06' 51.93" S	152° 55' 24.04" W	0.500	60 M
FP_517	0° 07' 08.21" S	152° 54' 58.83" W	0.500	60 M
FP_518	0° 07' 24.70" S	152° 54' 33.77" W	0.500	60 M
FP_519	0° 07' 41.40" S	152° 54' 08.83" W	0.500	60 M
FP_520	0° 07' 58.31" S	152° 53' 44.04" W	0.500	60 M
FP_521	0° 08' 15.42" S	152° 53' 19.39" W	0.500	60 M
FP_522	0° 08' 32.74" S	152° 52' 54.88" W	0.500	60 M
FP_523	0° 08' 50.26" S	152° 52' 30.52" W	0.500	60 M
FP_524	0° 09' 08.00" S	152° 52' 06.29" W	0.500	60 M
FP_525	0° 09' 25.93" S	152° 51' 42.23" W	0.500	60 M
FP_526	0° 09' 44.06" S	152° 51' 18.30" W	0.500	60 M



FP_527	0° 10' 02.40" S	152° 50' 54.52" W	0.500	60 M
FP_528	0° 10' 20.93" S	152° 50' 30.91" W	0.500	60 M
FP_529	0° 10' 39.66" S	152° 50' 07.44" W	0.500	60 M
FP_530	0° 10' 58.59" S	152° 49' 44.13" W	0.500	60 M
FP_531	0° 11' 17.71" S	152° 49' 20.98" W	0.500	60 M
FP_532	0° 11' 37.02" S	152° 48' 57.99" W	0.500	60 M
FP_533	0° 11' 56.53" S	152° 48' 35.15" W	0.500	60 M
FP_534	0° 12' 16.23" S	152° 48' 12.48" W	0.500	60 M
FP_535	0° 12' 36.12" S	152° 47' 49.98" W	0.500	60 M
FP_536	0° 12' 56.19" S	152° 47' 27.63" W	0.500	60 M
FP_537	0° 13' 16.46" S	152° 47' 05.46" W	0.500	60 M
FP_538	0° 13' 36.90" S	152° 46' 43.46" W	0.500	60 M
FP_539	0° 13' 57.54" S	152° 46' 21.62" W	0.500	60 M
FP_540	0° 14' 18.35" S	152° 45' 59.95" W	0.500	60 M
FP_541	0° 14' 39.35" S	152° 45' 38.46" W	0.500	60 M
FP_542	0° 15' 00.52" S	152° 45' 17.14" W	0.500	60 M
FP_543	0° 15' 21.87" S	152° 44' 56.00" W	0.500	60 M
FP_544	0° 15' 43.40" S	152° 44' 35.04" W	0.500	60 M
FP_545	0° 16' 05.11" S	152° 44' 14.26" W	0.500	60 M
FP_546	0° 16' 26.99" S	152° 43' 53.65" W	0.500	60 M
FP_547	0° 16' 49.04" S	152° 43' 33.23" W	0.500	60 M
FP_548	0° 17' 11.26" S	152° 43' 12.99" W	0.500	60 M
FP_549	0° 17' 33.65" S	152° 42' 52.94" W	0.500	60 M
FP_550	0° 17' 56.20" S	152° 42' 33.07" W	0.500	60 M
FP_551	0° 18' 18.93" S	152° 42' 13.38" W	0.500	60 M
FP_552	0° 18' 41.82" S	152° 41' 53.89" W	0.500	60 M
FP_553	0° 19' 04.86" S	152° 41' 34.59" W	0.500	60 M
FP_554	0° 19' 28.07" S	152° 41' 15.48" W	0.500	60 M
FP_555	0° 19' 51.45" S	152° 40' 56.56" W	0.500	60 M
FP_556	0° 20' 14.97" S	152° 40' 37.84" W	0.500	60 M
FP_557	0° 20' 38.66" S	152° 40' 19.31" W	0.500	60 M
FP_558	0° 21' 02.50" S	152° 40' 00.98" W	0.500	60 M
FP_559	0° 21' 26.49" S	152° 39' 42.84" W	0.500	60 M
FP_560	0° 21' 50.63" S	152° 39' 24.91" W	0.500	60 M
FP_561	0° 22' 14.93" S	152° 39' 07.17" W	0.500	60 M
FP_562	0° 22' 39.37" S	152° 38' 49.64" W	0.500	60 M



FP_563	0° 23' 03.96" S	152° 38' 32.31" W	0.500	60 M
FP_564	0° 23' 28.69" S	152° 38' 15.18" W	0.500	60 M
FP_565	0° 23' 53.56" S	152° 37' 58.26" W	0.500	60 M
FP_566	0° 24' 18.58" S	152° 37' 41.55" W	0.500	60 M
FP_567	0° 24' 43.73" S	152° 37' 25.04" W	0.500	60 M
FP_568	0° 25' 09.02" S	152° 37' 08.75" W	0.500	60 M
FP_569	0° 25' 34.45" S	152° 36' 52.66" W	0.500	60 M
FP_570	0° 26' 00.01" S	152° 36' 36.78" W	0.500	60 M
FP_571	0° 26' 25.71" S	152° 36' 21.12" W	0.500	60 M
FP_572	0° 26' 51.53" S	152° 36' 05.66" W	0.500	60 M
FP_573	0° 27' 17.49" S	152° 35' 50.43" W	0.500	60 M
FP_574	0° 27' 43.57" S	152° 35' 35.40" W	0.500	60 M
FP_575	0° 28' 09.77" S	152° 35' 20.60" W	0.500	60 M
FP_576	0° 28' 36.10" S	152° 35' 06.01" W	0.500	60 M
FP_577	0° 29' 02.56" S	152° 34' 51.64" W	0.500	60 M
FP_578	0° 29' 29.13" S	152° 34' 37.49" W	0.500	60 M
FP_579	0° 29' 55.82" S	152° 34' 23.56" W	0.500	60 M
FP_580	0° 30' 22.62" S	152° 34' 09.85" W	0.500	60 M
FP_581	0° 30' 49.54" S	152° 33' 56.36" W	0.500	60 M
FP_582	0° 31' 16.57" S	152° 33' 43.09" W	0.500	60 M
FP_583	0° 31' 43.71" S	152° 33' 30.06" W	0.500	60 M
FP_584	0° 32' 10.96" S	152° 33' 17.25" W	0.500	60 M
FP_585	0° 32' 38.31" S	152° 33' 04.66" W	0.500	60 M
FP_586	0° 33' 05.77" S	152° 32' 52.30" W	0.500	60 M
FP_587	0° 33' 33.34" S	152° 32' 40.16" W	0.500	60 M
FP_588	0° 34' 01.00" S	152° 32' 28.25" W	0.500	60 M
FP_589	0° 34' 28.76" S	152° 32' 16.58" W	0.500	60 M
FP_590	0° 34' 56.62" S	152° 32' 05.14" W	0.500	60 M
FP_591	0° 35' 24.57" S	152° 31' 53.92" W	0.500	60 M
FP_592	0° 35' 52.62" S	152° 31' 42.94" W	0.500	60 M
FP_593	0° 36' 20.76" S	152° 31' 32.18" W	0.500	60 M
FP_594	0° 36' 48.99" S	152° 31' 21.67" W	0.500	60 M
FP_595	0° 37' 17.30" S	152° 31' 11.39" W	0.500	60 M
FP_596	0° 37' 45.70" S	152° 31' 01.34" W	0.500	60 M
FP_597	0° 38' 14.19" S	152° 30' 51.53" W	0.500	60 M
FP_598	0° 38' 42.75" S	152° 30' 41.94" W	0.500	60 M



FP_599	0° 39' 11.39" S	152° 30' 32.61" W	0.500	60 M
FP_600	0° 39' 40.12" S	152° 30' 23.50" W	0.500	60 M
FP_601	0° 40' 08.91" S	152° 30' 14.64" W	0.500	60 M
FP_602	0° 40' 37.78" S	152° 30' 06.02" W	0.500	60 M
FP_603	0° 41' 06.73" S	152° 29' 57.62" W	0.500	60 M
FP_604	0° 41' 35.74" S	152° 29' 49.48" W	0.500	60 M
FP_605	0° 42' 04.81" S	152° 29' 41.58" W	0.500	60 M
FP_606	0° 42' 33.96" S	152° 29' 33.91" W	0.500	60 M
FP_607	0° 43' 03.16" S	152° 29' 26.48" W	0.500	60 M
FP_608	0° 43' 32.43" S	152° 29' 19.30" W	0.500	60 M
FP_609	0° 44' 01.76" S	152° 29' 12.36" W	0.500	60 M
FP_610	0° 44' 31.14" S	152° 29' 05.66" W	0.500	60 M
FP_611	0° 45' 00.58" S	152° 28' 59.21" W	0.500	60 M
FP_612	0° 45' 30.08" S	152° 28' 53.00" W	0.500	60 M
FP_613	0° 45' 59.62" S	152° 28' 47.03" W	0.500	60 M
FP_614	0° 46' 29.21" S	152° 28' 41.32" W	0.500	60 M
FP_615	0° 46' 58.85" S	152° 28' 35.84" W	0.500	60 M
FP_616	0° 47' 28.54" S	152° 28' 30.61" W	0.500	60 M
FP_617	0° 47' 58.27" S	152° 28' 25.63" W	0.500	60 M
FP_618	0° 48' 28.03" S	152° 28' 20.89" W	0.500	60 M
FP_619	0° 48' 57.84" S	152° 28' 16.39" W	0.500	60 M
FP_620	0° 49' 27.68" S	152° 28' 12.15" W	0.500	60 M
FP_621	0° 49' 57.56" S	152° 28' 08.16" W	0.500	60 M
FP_622	0° 50' 27.47" S	152° 28' 04.40" W	0.500	60 M
FP_623	0° 50' 57.42" S	152° 28' 00.90" W	0.500	60 M
FP_624	0° 51' 27.38" S	152° 27' 57.64" W	0.500	60 M
FP_625	0° 51' 57.38" S	152° 27' 54.65" W	0.500	60 M
FP_626	0° 52' 27.40" S	152° 27' 51.89" W	0.500	60 M
FP_627	0° 52' 57.44" S	152° 27' 49.37" W	0.500	60 M
FP_628	0° 53' 27.50" S	152° 27' 47.12" W	0.500	60 M
FP_629	0° 53' 57.58" S	152° 27' 45.11" W	0.500	60 M
FP_630	0° 54' 27.68" S	152° 27' 43.34" W	0.500	60 M
FP_631	0° 54' 57.79" S	152° 27' 41.83" W	0.500	60 M
FP_632	0° 55' 27.91" S	152° 27' 40.56" W	0.500	60 M
FP_633	0° 55' 58.04" S	152° 27' 39.55" W	0.500	60 M
FP_634	0° 56' 28.18" S	152° 27' 38.78" W	0.500	60 M



FP_635	0° 56' 58.32" S	152° 27' 38.27" W	0.500	60 M
FP_636	0° 57' 28.47" S	152° 27' 38.01" W	0.500	60 M
FP_637	0° 57' 58.62" S	152° 27' 37.99" W	0.500	60 M
FP_638	0° 58' 28.77" S	152° 27' 38.22" W	0.500	60 M
FP_639	0° 58' 58.91" S	152° 27' 38.70" W	0.500	60 M
FP_640	0° 59' 29.05" S	152° 27' 39.44" W	0.500	60 M
FP_641	0° 59' 59.18" S	152° 27' 40.42" W	0.500	60 M
FP_642	1° 00' 29.30" S	152° 27' 41.64" W	0.500	60 M
FP_643	1° 00' 59.41" S	152° 27' 43.12" W	0.500	60 M
FP_644	1° 01' 29.51" S	152° 27' 44.85" W	0.500	60 M
FP_645	1° 01' 59.59" S	152° 27' 46.84" W	0.500	60 M
FP_646	1° 02' 29.66" S	152° 27' 49.07" W	0.500	60 M
FP_647	2° 00' 38.65" S	152° 12' 01.60" W	59.987	200 M

Table 3. List of coordinates defining the outer limits of the extended continental shelf for Central Platform Area. All coordinates use the WGS 84 geodetic reference system.



OLCS Point	Latitude DD	Longitude DD	Distance From Previous (M)	Article 76 Provision Invoked
South Area				
FP_648	4° 11' 49.63" S	151° 33' 38.55" W	0.000	200 M
FP_649	5° 07' 35.64" S	151° 10' 49.54" W	59.991	60 M
FP_650	5° 08' 14.61" S	151° 10' 06.31" W	0.967	60 M
FP_651	5° 08' 35.05" S	151° 09' 44.21" W	0.500	60 M
FP_652	5° 08' 55.67" S	151° 09' 22.28" W	0.500	60 M
FP_653	5° 09' 16.47" S	151° 09' 00.51" W	0.500	60 M
FP_654	5° 09' 37.45" S	151° 08' 38.93" W	0.500	60 M
FP_655	5° 09' 58.61" S	151° 08' 17.51" W	0.500	60 M
FP_656	5° 10' 19.95" S	151° 07' 56.27" W	0.500	60 M
FP_657	5° 10' 41.46" S	151° 07' 35.21" W	0.500	60 M
FP_658	5° 11' 03.16" S	151° 07' 14.33" W	0.500	60 M
FP_659	5° 11' 25.02" S	151° 06' 53.62" W	0.500	60 M
FP_660	5° 11' 47.05" S	151° 06' 33.10" W	0.500	60 M
FP_661	5° 12' 09.26" S	151° 06' 12.77" W	0.500	60 M
FP_662	5° 30' 50.43" S	150° 49' 15.62" W	25.134	60 M
FP_663	5° 53' 02.01" S	150° 29' 13.25" W	29.781	60 M
FP_664	5° 53' 24.36" S	150° 28' 53.04" W	0.500	60 M
FP_665	5° 53' 46.87" S	150° 28' 33.02" W	0.500	60 M
FP_666	5° 54' 09.56" S	150° 28' 13.19" W	0.500	60 M
FP_667	5° 54' 32.40" S	150° 27' 53.55" W	0.500	60 M
FP_668	5° 54' 55.41" S	150° 27' 34.09" W	0.500	60 M
FP_669	5° 55' 18.58" S	150° 27' 14.83" W	0.500	60 M
FP_670	5° 55' 41.91" S	150° 26' 55.77" W	0.500	60 M
FP_671	5° 56' 05.40" S	150° 26' 36.90" W	0.500	60 M
FP_672	5° 56' 29.04" S	150° 26' 18.22" W	0.500	60 M
FP_673	5° 56' 52.84" S	150° 25' 59.74" W	0.500	60 M
FP_674	5° 57' 16.79" S	150° 25' 41.46" W	0.500	60 M
FP_675	5° 57' 40.89" S	150° 25' 23.38" W	0.500	60 M
FP_676	5° 58' 05.14" S	150° 25' 05.50" W	0.500	60 M
FP_677	5° 58' 29.55" S	150° 24' 47.82" W	0.500	60 M
FP_678	5° 58' 54.10" S	150° 24' 30.34" W	0.500	60 M
FP_679	5° 59' 18.79" S	150° 24' 13.07" W	0.500	60 M



FP_680	5° 59' 43.62" S	150° 23' 56.00" W	0.500	60 M
FP_681	6° 00' 08.60" S	150° 23' 39.15" W	0.500	60 M
FP_682	6° 00' 33.72" S	150° 23' 22.49" W	0.500	60 M
FP_683	6° 00' 58.97" S	150° 23' 06.06" W	0.500	60 M
FP_684	6° 01' 24.36" S	150° 22' 49.82" W	0.500	60 M
FP_685	6° 01' 49.89" S	150° 22' 33.80" W	0.500	60 M
FP_686	6° 02' 15.55" S	150° 22' 17.99" W	0.500	60 M
FP_687	6° 02' 41.33" S	150° 22' 02.40" W	0.500	60 M
FP_688	6° 37' 08.05" S	149° 32' 35.78" W	59.991	200 M

Table 4. List of coordinates defining the outer limits of the extended continental shelf for the South Platform Area. All coordinates use the WGS 84 geodetic reference system.