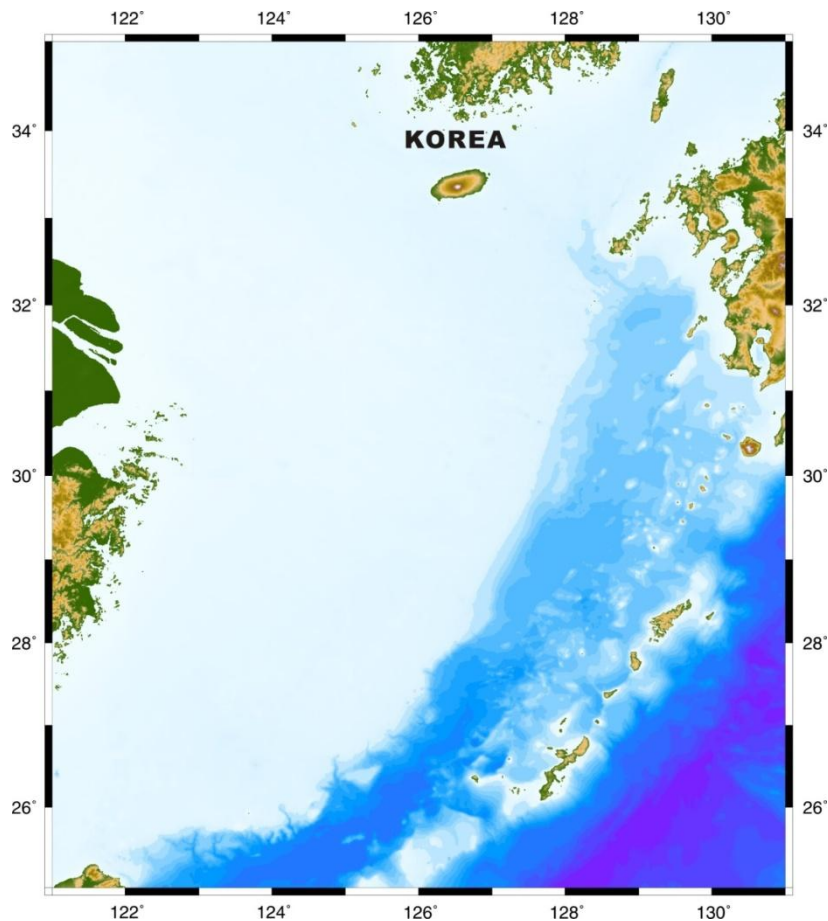




PARTIAL SUBMISSION

To the Commission on the Limits of the Continental Shelf
Pursuant to Article 76 Paragraph 8 of the
United Nations Convention on the Law of the Sea

EXECUTIVE SUMMARY



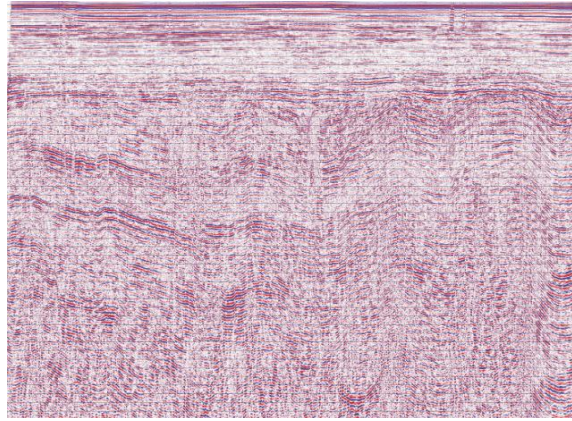
Republic of Korea

December 2012

KOR-ES-DOC



R/V TAMHAE II



A seismic reflection profile image



Streamer & Bird installed in R/V TAMHAE II



Air-gun array installed in R/V TAMHAE II



ISBN 978-89-86948-22-6

© The Government of the Republic of Korea 2012

Table of Contents

List of Figures and Tables 3

1. Introduction 4

2. Provisions of Article 76 Invoked in Support of the Submission 6

3. Commission Members Who Provided Advice During the Preparation
of the Submission 6

4. Outstanding Maritime Delimitations 6

5. Description of the Outer Limits of the Continental Shelf 7

6. State Bodies Responsible for the Preparation of the Submission 8

Figure

Figure 1 The outer limits of the continental shelf beyond 200 M from the
baselines of Korea in the East China Sea 9

Table

Table 1. List of geographical coordinates of the 85 fixed points that define the
outer limits of the continental shelf beyond 200 M from the baselines
of Korea in the East China Sea 10

1. INTRODUCTION

- 1.1** The Republic of Korea (hereinafter referred to as “Korea”) signed and ratified the United Nations Convention on the Law of the Sea (hereinafter referred to as “the Convention”) on 14 March 1983 and 29 January 1996, respectively. The Convention entered into force for Korea on 28 February 1996.
- 1.2** In accordance with paragraph 8 of article 76 of the Convention, State Parties to the Convention are obligated to submit to the Commission on the Limits of the Continental Shelf (hereinafter referred to as “the Commission”), as established by the Convention, information on the limits of the continental shelf beyond 200 nautical miles (hereinafter referred to as “M”) from the baselines from which the breadth of the territorial sea is measured. Under article 4 of Annex II to the Convention, State Parties are obligated to submit particulars of the outer limits of the continental shelf to the Commission along with supporting scientific and technical data.
- 1.3** A decision was made at the Eleventh Meeting of States Parties to the Convention (SPLOS/72, paragraph (a)) that “in the case of a State Party for which the Convention entered into force before 13 May 1999, it is understood that the ten-year time period referred to in article 4 of Annex II to the Convention shall be taken to have commenced on 13 May 1999.”
- 1.4** The Eighteenth Meeting of States Parties to the Convention decided (SPLOS/183, paragraph 1(a)) that “the time period referred to in article 4 of annex II to the Convention and the decision contained in SPLOS/72, paragraph (a), may be satisfied by submitting to the Secretary-General preliminary information indicative of the outer limits of the continental shelf beyond 200 M and a description of the status of preparation and intended date of making a submission in accordance with the requirements of article 76 of the Convention and with the Rules of Procedure (hereinafter referred to as “the Rules”) and the Scientific and Technical Guidelines (hereinafter referred to as “the Guidelines”) of the Commission on the Limits of the Continental Shelf.” The Eighteenth Meeting of States Parties also decided (SPLOS/183, paragraph 1(c)) that “the preliminary information submitted by a coastal State in accordance with subparagraph (a) is without prejudice to the submission made in

accordance with the requirements of article 76 of the Convention and with the Rules and the Guidelines of the Commission, and the consideration of the submission by the Commission.”

- 1.5** On 12 May 2009, Korea submitted to the Secretary-General of the United Nations Preliminary Information indicating the outer limits of the continental shelf beyond 200 M from the baselines from which the breadth of its territorial sea is measured in the East China Sea. As indicated in Korea’s Preliminary Information, “the outer limits of the continental shelf in the East China Sea beyond 200 M from the baselines from which the breadth of the territorial sea of Korea is measured are located in the Okinawa Trough, where the seabed and subsoil of the East China Sea comprises a continuous continental landmass extending from Korea’s coast to the limits specified in the Convention.” The Preliminary Information, however, was “confined only to a part of the outer limits of the continental shelf in the East China Sea within the Joint Development Zone,” the area established under the Agreement between Korea and Japan Concerning Joint Development of the Southern Part of the Continental Shelf Adjacent to the Two Countries signed on 30 January 1974. The Preliminary Information also indicated that “Korea intends to make its submission, in accordance with paragraph 8 of article 76 of the Convention, at an appropriate date.”
- 1.6** After undertaking a thorough assessment and review of the scientific data of the areas concerned since the submission of Korea’s Preliminary Information on 12 May 2009, the Korean government has completed the preparation of its submission in respect of the East China Sea and hereby makes this Partial Submission in accordance with and in satisfaction of its obligations under article 76 of the Convention, and the Rules and the Guidelines of the Commission.
- 1.7** Pursuant to paragraph 3 of Annex I to the Rules, this Partial Submission concerns only a portion of the continental shelf beyond 200 M from the baselines of Korea in the East China Sea. It is made without prejudice to any future submission by Korea defining the outer limits of its continental shelf in other areas.

2. PROVISIONS OF ARTICLE 76 INVOKED IN SUPPORT OF THE SUBMISSION

2.1 As described in Section 5 of this Executive Summary, Korea invokes paragraphs 1, 3, 4(a)(ii), 4(b), 5, and 7 of article 76 of the Convention to establish the outer limits of the continental shelf beyond 200 M in the areas concerned in this Partial Submission.

3. COMMISSION MEMBERS WHO PROVIDED ADVICE DURING THE PREPARATION OF THE SUBMISSION

3.1 Professor Dr. PARK, Yong Ahn, a current member of the Commission (1997 – present), provided assistance to Korea in the preparation of this Partial Submission.

4. OUTSTANDING MARITIME DELIMITATIONS

4.1 Pursuant to paragraph 2(a) of Annex I to the Rules, Korea hereby informs the Commission that the continental shelf beyond 200 M from the baselines of Korea in the East China Sea, including but not limited to the areas with respect to which this Partial Submission is made, has yet to be definitively delimited among Korea and the other coastal States concerned.

4.2 Pursuant to paragraph 2(b) of Annex I to the Rules, Korea assures the Commission that this Partial Submission is made without prejudice to the question of delimitation of the continental shelf between States with opposite or adjacent coasts in the East China Sea.

4.3 In this regard, Korea has made efforts in good faith to assure its neighboring States that the present Partial Submission is made without prejudice to the questions of delimitation of the continental shelf in the East China Sea. The Government of Korea has consulted with the

Government of the People's Republic of China, and has also made efforts to consult with the Government of Japan concerning Korea's submission.

- 4.4** Consistent with paragraph 10 of article 76 of the Convention, article 9 of Annex II to the Convention, Rule 46 of the Rules, and paragraph 5(b) of Annex I to the Rules, Korea understands that the present Partial Submission and any actions of the Commission thereon shall not prejudice the position of its neighboring States on the question of delimitation.

5. DESCRIPTION OF THE OUTER LIMITS OF THE CONTINENTAL SHELF

- 5.1** In accordance with paragraphs 1 and 3 of article 76 of the Convention, the continental shelf of Korea comprises the seabed and subsoil of the submarine areas that extend beyond its territorial sea throughout the natural prolongation of its land territory to the outer edge of the continental margin in the East China Sea.
- 5.2** The outer edge of the continental margin described in this Partial Submission has been determined by using the formula line provided in paragraph 4(a)(ii) (the so-called Hedberg Formula) of article 76 of the Convention.
- 5.3** The location of the foot of the continental slope (hereinafter referred to as the "FOS") has been determined in accordance with paragraph 4(b) of article 76 of the Convention, and paragraph 5.1.3 of the Guidelines. Among a series of morphological profiles on the base of the slope in the eastern portion of the East China Sea, 6 points of maximum change of gradient at the base of the slope have been used in this Partial Submission. The outer envelopes of 60 M from these FOS points are constructed.
- 5.4** The final outer limits of the continental shelf beyond 200 M from the baselines of Korea in this Partial Submission are defined by the line

composed of 85 fixed points derived from the outer envelopes of 60 M from the FOS, but adjusted so as not to impinge on the territorial sea of Japan in the East China Sea.

- 5.5** The outer limits of the continental shelf in this Partial Submission satisfy the criteria stated in paragraphs 5 and 7 of article 76 of the Convention. The fixed points comprising the line of the outer limits of the continental shelf do not exceed 350 M from the baselines from which the breadth of the territorial sea is measured, and the lines connecting those fixed points do not exceed 60 M in length.
- 5.6** Figure 1 shows the outer limits of the continental shelf beyond 200 M from the baselines of Korea in the East China Sea. Table 1 lists the geographical coordinates of the fixed points that define the outer limits of the continental shelf beyond 200 M from the baselines of Korea in the East China Sea.

6. STATE BODIES RESPONSIBLE FOR THE PREPARATION OF THE SUBMISSION

- 6.1** The preparation of all the documents, maps, charts, and databases, and the gathering of all the relevant data used in this Partial Submission were carried out with the cooperation of the following bodies and affiliated agencies:

Ministry of Foreign Affairs and Trade

Ministry of Land, Transport and Maritime Affairs

Ministry of Knowledge Economy

Korea Institute of Geoscience and Mineral Resources

Korea Hydrographic and Oceanographic Administration

- 6.2** The bodies and agencies mentioned above are responsible for the quality and reliability of all the materials in this Partial Submission.

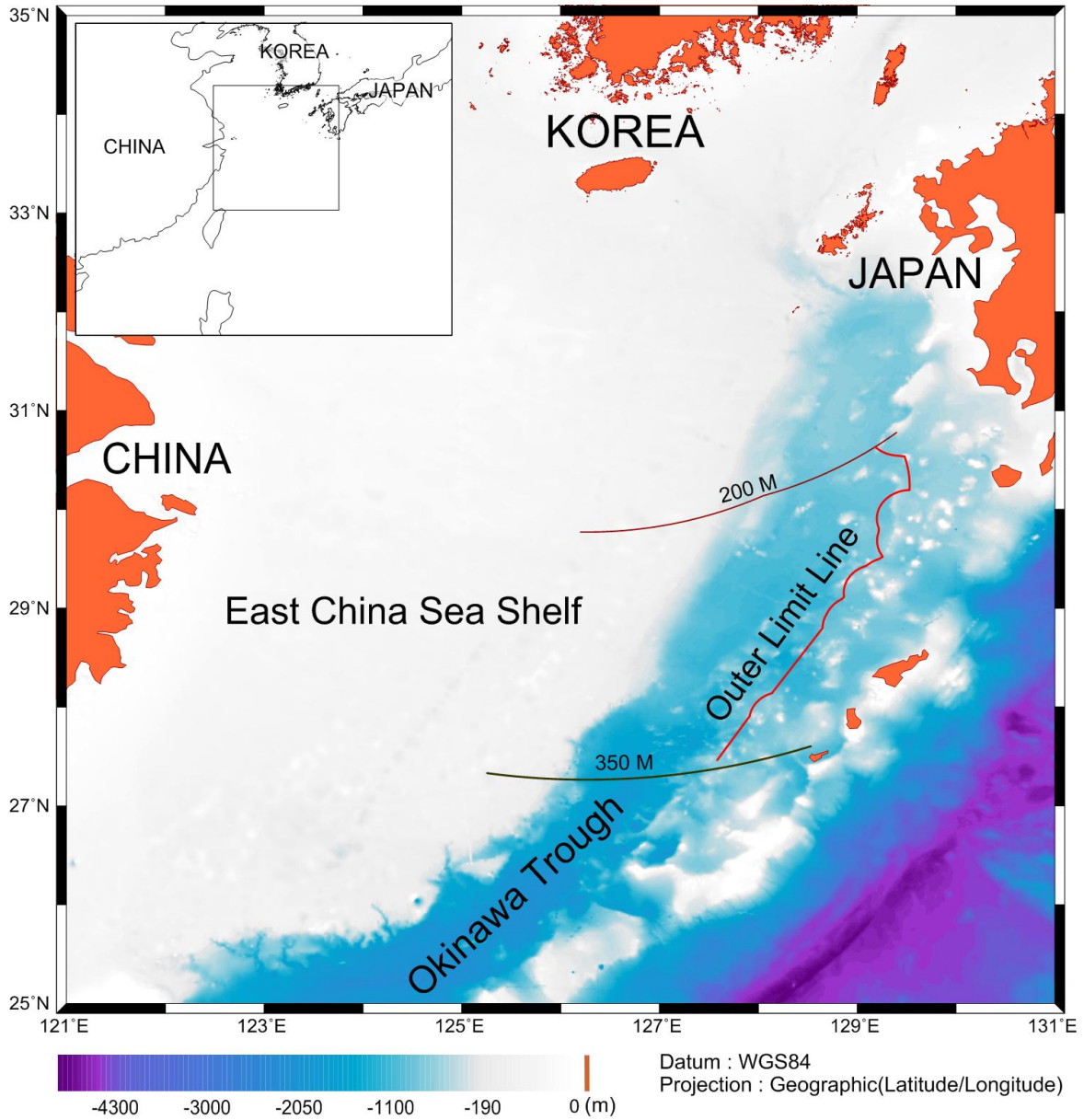


Figure 1. The outer limits of the continental shelf beyond 200 M from the baselines of Korea in the East China Sea (200 M line and 350 M constraint line are also shown).

Table 1. List of geographical coordinates of the 85 fixed points (outer limits (OL) points) that define the outer limits of the continental shelf beyond 200 M from the baselines of Korea in the East China Sea

OL point	Latitude N	Longitude E	Distance Nautical miles
KOR-01	30° 37 '58.736"	129° 11 '02.805"	1.31
KOR-02	30° 37 '02.747"	129° 12 '06.471"	2.00
KOR-03	30° 35 '47.388"	129° 13 '55.071"	2.00
KOR-04	30° 34 '43.585"	129° 15 '53.064"	2.00
KOR-05	30° 33 '52.203"	129° 17 '58.803"	2.00
KOR-06	30° 33 '13.936"	129° 20 '10.639"	2.00
KOR-07	30° 32 '49.286"	129° 22 '26.759"	2.00
KOR-08	30° 32 '36.610"	129° 24 '44.967"	2.00
KOR-09	30° 32 '20.652"	129° 27 '02.681"	1.49
KOR-10	30° 32 '08.726"	129° 28 '45.458"	2.35
KOR-11	30° 29 '53.291"	129° 29 '30.886"	2.75
KOR-12	30° 27 '12.287"	129° 30 '15.710"	2.75
KOR-13	30° 24 '29.669"	129° 30 '51.965"	2.75
KOR-14	30° 21 '45.766"	129° 31 '19.486"	2.75
KOR-15	30° 19 '00.944"	129° 31 '38.328"	2.75
KOR-16	30° 16 '15.552"	129° 31 '48.435"	2.75
KOR-17	30° 13 '29.919"	129° 31 '49.754"	1.71
KOR-18	30° 11 '46.860"	129° 31 '45.139"	0.98
KOR-19	30° 11 '46.029"	129° 30 '37.354"	2.00

KOR-20	30° 11 '30.196"	129° 28 '20.079"	2.00
KOR-21	30° 11 '00.416"	129° 26 '05.826"	2.00
KOR-22	30° 10 '17.102"	129° 23 '56.572"	2.00
KOR-23	30° 09 '21.209"	129° 21 '53.965"	2.00
KOR-24	30° 08 '14.591"	129° 19 '58.553"	2.00
KOR-25	30° 06 '57.137"	129° 18 '12.590"	2.00
KOR-26	30° 05 '30.029"	129° 16 '37.064"	2.00
KOR-27	30° 03 '54.091"	129° 15 '13.568"	2.00
KOR-28	30° 02 '10.319"	129° 14 '03.420"	2.00
KOR-29	30° 00 '20.084"	129° 13 '07.884"	2.00
KOR-30	29° 58 '24.955"	129° 12 '27.565"	2.00
KOR-31	29° 56 '26.508"	129° 12 '03.175"	2.00
KOR-32	29° 54 '26.380"	129° 11 '54.880"	2.00
KOR-33	29° 52 '26.265"	129° 12 '02.901"	2.00
KOR-34	29° 50 '27.750"	129° 12 '27.015"	2.00
KOR-35	29° 48 '32.661"	129° 13 '06.841"	1.99
KOR-36	29° 46 '33.068"	129° 13 '03.930"	2.00
KOR-37	29° 44 '36.792"	129° 12 '28.334"	2.00
KOR-38	29° 42 '37.768"	129° 12 '08.064"	2.00
KOR-39	29° 40 '37.475"	129° 12 '03.779"	2.00
KOR-40	29° 38 '37.545"	129° 12 '15.150"	2.00
KOR-41	29° 36 '39.600"	129° 12 '42.506"	2.00

KOR-42	29° 34 '45.246"	129° 13 '25.572"	2.00
KOR-43	29° 32 '55.973"	129° 14 '23.251"	1.88
KOR-44	29° 31 '19.067"	129° 15 '30.048"	2.48
KOR-45	29° 29 '52.570"	129° 13 '10.851"	2.00
KOR-46	29° 29 '07.300"	129° 11 '03.409"	2.00
KOR-47	29° 28 '09.299"	129° 09 '02.889"	2.00
KOR-48	29° 26 '59.261"	129° 07 '10.994"	2.03
KOR-49	29° 25 '41.759"	129° 05 '22.778"	1.99
KOR-50	29° 24 '58.315"	129° 03 '15.337"	2.00
KOR-51	29° 24 '01.784"	129° 01 '13.998"	2.00
KOR-52	29° 22 '53.112"	128° 59 '21.108"	2.00
KOR-53	29° 21 '33.256"	128° 57 '38.222"	2.00
KOR-54	29° 20 '03.443"	128° 56 '06.760"	2.00
KOR-55	29° 18 '24.881"	128° 54 '47.823"	2.00
KOR-56	29° 16 '39.234"	128° 53 '42.015"	2.00
KOR-57	29° 14 '47.702"	128° 52 '50.325"	2.00
KOR-58	29° 12 '51.652"	128° 52 '14.015"	2.00
KOR-59	29° 10 '52.629"	128° 51 '53.526"	2.00
KOR-60	29° 08 '52.342"	128° 51 '49.021"	1.99
KOR-61	29° 06 '52.777"	128° 52 '00.227"	2.03
KOR-62	29° 05 '25.195"	128° 50 '23.273"	2.00
KOR-63	29° 04 '21.186"	128° 48 '27.257"	2.00

KOR-64	29° 03 '05.635"	128° 46 '40.635"	2.00
KOR-65	29° 01 '39.701"	128° 45 '04.724"	2.00
KOR-66	29° 00 '04.717"	128° 43 '40.569"	2.00
KOR-67	28° 58 '21.700"	128° 42 '29.762"	2.00
KOR-68	28° 56 '33.100"	128° 41 '30.656"	2.00
KOR-69	28° 54 '45.297"	128° 40 '30.121"	2.00
KOR-70	28° 52 '51.883"	128° 39 '44.363"	2.00
KOR-71	28° 50 '54.481"	128° 39 '14.095"	2.00
KOR-72	28° 48 '54.792"	128° 38 '59.703"	0.90
KOR-73	28° 48 '00.464"	128° 39 '00.307"	47.90
KOR-74	28° 08 '25.103"	128° 08 '14.604"	1.91
KOR-75	28° 07 '45.731"	128° 06 '12.931"	2.00
KOR-76	28° 06 '51.397"	128° 04 '11.807"	2.00
KOR-77	28° 05 '44.758"	128° 02 '18.648"	2.00
KOR-78	28° 04 '26.762"	128° 00 '35.156"	2.00
KOR-79	28° 02 '58.748"	127° 59 '02.541"	2.00
KOR-80	28° 01 '22.452"	127° 57 '41.078"	2.00
KOR-81	27° 59 '38.295"	127° 56 '32.963"	2.00
KOR-82	27° 57 '47.773"	127° 55 '39.157"	2.00
KOR-83	27° 55 '52.423"	127° 55 '00.375"	1.43
KOR-84	27° 54 '27.616"	127° 54 '43.759"	37.29
KOR-85	27° 27 '48.974"	127° 35 '04.706"	