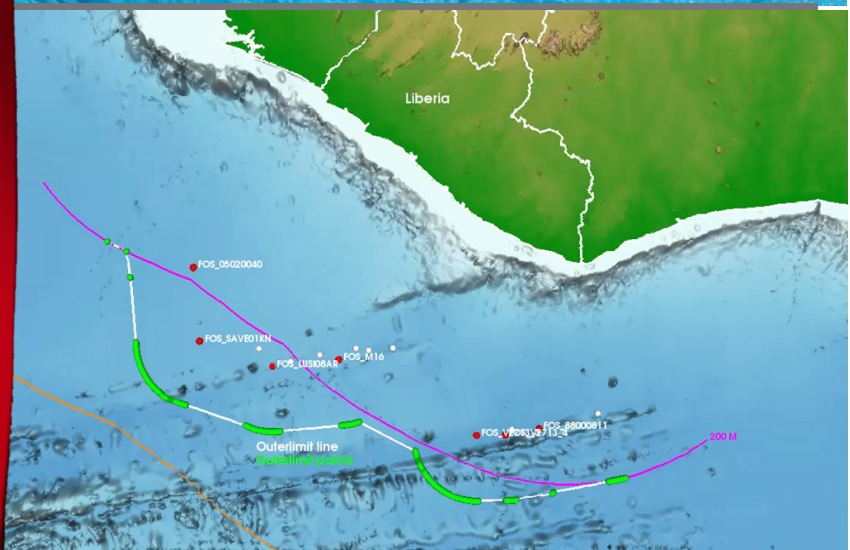




Submission by the Republic of Liberia to the Commission on the Limits of the Continental Shelf

EXECUTIVE SUMMARY

LIB-ES-DOC





**SUBMISSION
BY THE REPUBLIC OF LIBERIA TO THE
COMMISSION ON THE LIMITS OF THE CONTINENTAL
SHELF**

EXECUTIVE SUMMARY

LIB-ES-DOC



TABLE OF CONTENTS

i. PREFACE.....	iii
ii. LIST OF FIGURES	iv
iii. LIST OF TABLES	iv
1. INTRODUCTION	1
2. ABSENCE OF DISPUTES.....	4
3. FORM OF SUBMISSION, MAPS AND TABLES	4
4. PROVISIONS OF ARTICE 76 INVOKED	4
5. GEOGRAPHIC, MORPHOLOGICAL AND GEOLOGICAL OVERVIEW.....	5
6. THE OUTER LIMITS OF THE CONTINENTAL SHELF.....	5
7. COMMISSIONERS WHO PROVIDED ASSISTANCE DURING THE PREPARATION OF THE SUBMISSION	5



PREFACE

This Executive Summary forms part of the Submission by the Republic of Liberia to the Commission on the Limits of the Continental Shelf.



LIST OF FIGURES

FIGURE 1

THE GEOGRAPHIC LOCATION AND REGIONAL SETTING OF THE REPUBLIC OF LIBERIA.....	3
--	---

FIGURE 2

OUTER LIMITS OF THE CONTINENTAL SHELF OF THE REPUBLIC OF LIBERIA SHOWING THE OUTER LIMIT LINE AND AREA OF CONTINENTAL SHELF EXTENDING BEYOND 200M FROM THE TERRITORIAL SEA BASELINE.....	6
--	---

FIGURE 3

OUTER LIMITS OF THE CONTINENTAL SHELF OF THE REPUBLIC OF LIBERIA AND PROVISIONS OF ARTICLE 76 INVOKED.....	7
--	---

LIST OF TABLES

TABLE 1

COORDINATES DEFINING THE OUTER LIMITS OF THE CONTINENTAL SHELF OF THE REPUBLIC OF LIBERIA.....	8
--	---



1. Introduction

- 1.1 This Executive Summary forms part of the Submission made by the Republic of Liberia to the Commission on the Limits of the Continental Shelf ('The Commission') in accordance with paragraph 8 of Article 76 of the United Nations Convention on the Law of the Sea, 1982 ('the Convention'). The Submission has been made in support of the establishment by the Republic of Liberia of the outer limits of the continental shelf that lies beyond 200 nautical miles ('M') from the territorial sea baseline.
- 1.2 The Republic of Liberia recalls that where the continental shelf extends beyond 200 M from the territorial sea baselines, a coastal State seeking to establish the outer limits of the continental shelf beyond 200 M is required under paragraph 8 of Article 76 to submit information on such outer limits to the Commission, which makes recommendations to the coastal State concerning the outer limits of the continental shelf consistent with Article 76 of the Convention.
- 1.3 The Republic of Liberia is a coastal State located in the westernmost sub-region of the African continent. The nation was founded in 1822 and became Africa's first republic in 1847 after declaring independence from the American Colonization Society. The Republic of Liberia is one of the founding members of the United Nations and is a party to the Convention, having signed it on the day that it was opened for signature on 10 December 1982, and subsequently ratified it on 25 September 2008. The Convention entered into force for Liberia on 24 October 2008.
- 1.4 The geographical location and regional setting of the Republic of Liberia is presented in Figure 1. The coastline of the Republic of Liberia faces the Atlantic Ocean to the southwest, and is bounded to the north-west by the neighbouring coastal State of Sierra Leone and by Cote d'Ivoire to the southeast. It also shares a land boundary to the northeast with Guinea. The total land area of Liberia is approximately 96,369 km and the total length of the coast is approximately 313 nautical miles. The population of Liberia has recently been estimated to be approximately 4.73 million (Liberia Country Profile, World Bank 2018).
- 1.5 The Republic of Liberia has enacted various legislation and Presidential Executive Orders establishing maritime zones over the years based on the prevailing rules and principles of international law. This includes the Act to establish and delimit the Territorial Sea and Contiguous Zone of the Republic of Liberia, approved 24 June 1968 ('1968 Act'), which was later replaced by the Act to approve the Executive Order issued by the President of Liberia on 24 December 1976, approved 16 February 1977 ('1977 Act'). The 1968 Act declared the baseline of Liberia to be the low-water line along the coast. The Act also established the Territorial Sea as a belt of waters adjacent to the land territory of Liberia. The 1977 Act declared that the territorial sea of Liberia established under the 1968 Act extended further seaward to a distance of 200 nautical miles from the territorial sea baseline.
- 1.6 In the period of time that has followed the entry into force of the Convention for the Republic of Liberia, the following Executive Orders have been issued:
 - Executive Order No. 39 of 12 January 2012, Delimiting the Maritime Zones of the Republic of Liberia;
 - Executive Order No. 48 of 10 January 2013, Extension of Executive Order No. 39 Delimiting the Maritime Zones of the Republic of Liberia; and,



- Executive Order No. 59 of 28 April 2014, Extension of Executive Order No. 48 Delimiting the Maritime Zones of the Republic of Liberia.

Executive Order No. 59 is presently in effect and establishes the national maritime zones of Liberia through an extension of Executive Order No. 48. New national maritime zone legislation is under development for consideration and enactment by the Legislature.

- 1.7 As provided for under paragraph 1 of Article 76, the Republic of Liberia has a continental shelf comprising the seabed and subsoil of the submarine areas that extend beyond the territorial sea throughout the natural prolongation of the relevant land territory to the outer edge of the continental margin, up to the limits provided for in paragraphs 4 to 6 of Article 76.
- 1.8 This Submission represents a full submission in respect of the continental shelf where it extends beyond 200 M from the territorial sea baseline of the Republic of Liberia. For the purposes of preparing this Submission, Liberia has applied the relevant provisions of Article 76 of the Convention, the Rules of Procedure of the Commission on the Limits of the Continental Shelf (CLCS/40/Rev. 1) adopted by the Commission on 17 April 2008 ('Rules of Procedure') and, the Scientific and Technical Guidelines of the Commission on the Limits of the Continental Shelf (CLCS/11) adopted by the Commission on 13 May 1999 ('the Guidelines').



Figure 1. The Geographic location and regional setting of the Republic of Liberia.



2. Absence of Disputes

- 2.1 The maritime zone entitlements of the Republic of Liberia overlap with those of the adjacent coastal States of Sierra Leone and Côte d'Ivoire. The settlement of these boundaries will likely require the delimitation of overlapping areas of territorial sea, exclusive economic zone and continental shelf. In time, it may also require the delimitation of areas of continental shelf that extend beyond 200 M from the territorial sea baselines.
- 2.2 The Republic of Liberia recalls that Article 9 of Annex II of the Convention provides that the actions of the Commission shall not prejudice matters relating to the delimitation of boundaries between States with opposite or adjacent coasts. The Commission has therefore adopted a practice, contained in Annex I to the Rules of Procedure, which operates to prevent the consideration of a submission that would require the examination by the Commission of a disputed continental shelf without the consent of the affected parties in dispute. In this regard, Liberia confirms in accordance with paragraph 2(a) of Annex I of the Rules of Procedure that the area of continental shelf that forms the basis of the present Submission is not the subject of any dispute with any other State.
- 2.3 The Republic of Liberia confirms also that the Submission is made without prejudice to the delimitation of outstanding maritime boundaries with Sierra Leone and Côte d'Ivoire. In this regard, the Republic of Liberia will seek to delimit maritime boundaries with neighbouring coastal States through negotiation, consistent with the applicable rules and principles of the Convention.

3. Form of Submission, Maps and Tables

- 3.1 In accordance with Article 1 of Annex III to the Rules of Procedure and paragraphs 9.1.3 to 9.1.6 of the Guidelines, the Submission consists of three parts comprising:
 - this Executive Summary (LIB-ES-DOC);
 - the Main Body (LIB-MB-DOC); and,
 - Supporting scientific and technical data, presented in digital form (LIB-SD).

This Executive Summary provides a brief outline of the continental shelf beyond 200M, including a depiction of the outer limits of the continental shelf determined by the Republic of Liberia.

- 3.2 Two maps illustrating the outer limits of the continental shelf of the Republic of Liberia have been constructed using large-scale Admiralty Charts and are attached to this Executive Summary as A0 maps (LIB-ES-DOC-MAP 1 and LIB-ES-DOC-MAP 2). The outer limits of the continental shelf are also presented at:
 - Figure 2 (depicting the outer limit line); and,
 - Figure 3 (depicting the outer limit line and information concerning the provisions of Article 76 invoked).

4. Provisions of Article 76 Invoked

- 4.1 The Republic of Liberia has invoked paragraphs 3, 4(a)(ii), 5 and 7 of Article 76 of the Convention in support of the determination of the outer limits of the continental shelf included in this Submission, as outlined in Section 6 of this Executive Summary.



5. Geographic, Morphological and Geological Overview

- 5.1 The continental shelf of the Republic of Liberia extends beyond 200 M from the territorial sea baseline in the region of the Liberian High, which forms part of the West African continental margin between southern Guinea and Liberia. The Liberian High formed during the process of the extension and magmatic continental break-up of Africa and South America that began in the Early Cretaceous and ultimately led to the formation of mass transport depositional systems.
- 5.2 According to paragraph 2.2.3 of the Guidelines, the Republic of Liberia is required to demonstrate that the natural prolongation of its relevant land territory extends beyond 200 M from the territorial sea baseline.
- 5.3 The relevant area of the Liberian High is the submerged prolongation of the landmass of the Republic of Liberia. The slope in this region consists of two parts - an upper steep slope and a lower flatter slope, formed by mass-transport depositional processes associated with slope failure and erosion. The base of the continental slope of Liberia lies at the outer edge of the lower slope, which in the northwest grades into the Sierra Leone basin and, in the southeast, is truncated by the St Paul Fracture Zone.
- 5.4 A detailed examination of the geology and geomorphology of the area covered by the Submission is contained in the Main Body of the Submission (LIB-MB-DOC), which includes a discussion that demonstrates clearly the natural prolongation of the continental shelf from the land territory of the Republic of Liberia.

6. The Outer Limits of the Continental Shelf

- 6.1 Scientific and technical data submitted by the Republic of Liberia in support of the Submission establishes that the outer edge of the continental margin extends beyond 200 M measured from the territorial sea baseline. Accordingly, the Republic of Liberia has defined the outer limits of the continental shelf by applying the rules of paragraphs 4 to 10 of Article 76 of the Convention.
- 6.2 In accordance with paragraph 7 of Article 76 of the Convention, the Republic of Liberia has established the outer limits of the continental shelf beyond 200 M by fixed points defined by longitude and latitude connected by straight lines not exceeding 60 M. The GEOCAP software package was used to determine the optimized location of the fixed points on the combined formula line in addition to the 200 M line of Liberia.
- 6.3 The outer limits of the continental shelf of the Republic of Liberia are defined by 455 Fixed Points ('FP') comprising 453 fixed points on the Hedberg line and two fixed points on the 200 M line measured from the Territorial Sea baseline of the Republic of Liberia. Table 1 lists the coordinates of the Article 76 fixed points constructed to define the outer limits of the continental shelf of the Republic of Liberia in both decimal degrees ('DD') and, in degrees, minutes and seconds ('DMS').
- 6.4 The area of continental shelf that extends beyond 200 M measured from the territorial sea baseline of the Republic of Liberia is approximately 74,480 sq. km.

7. Commissioners Who Provided Assistance during the Preparation of the Submission

- 7.1 No members of the Commission provided advice concerning the preparation of the Submission. The Submission was prepared by the Liberia Maritime Authority with the assistance of Cooley (UK) LLP.

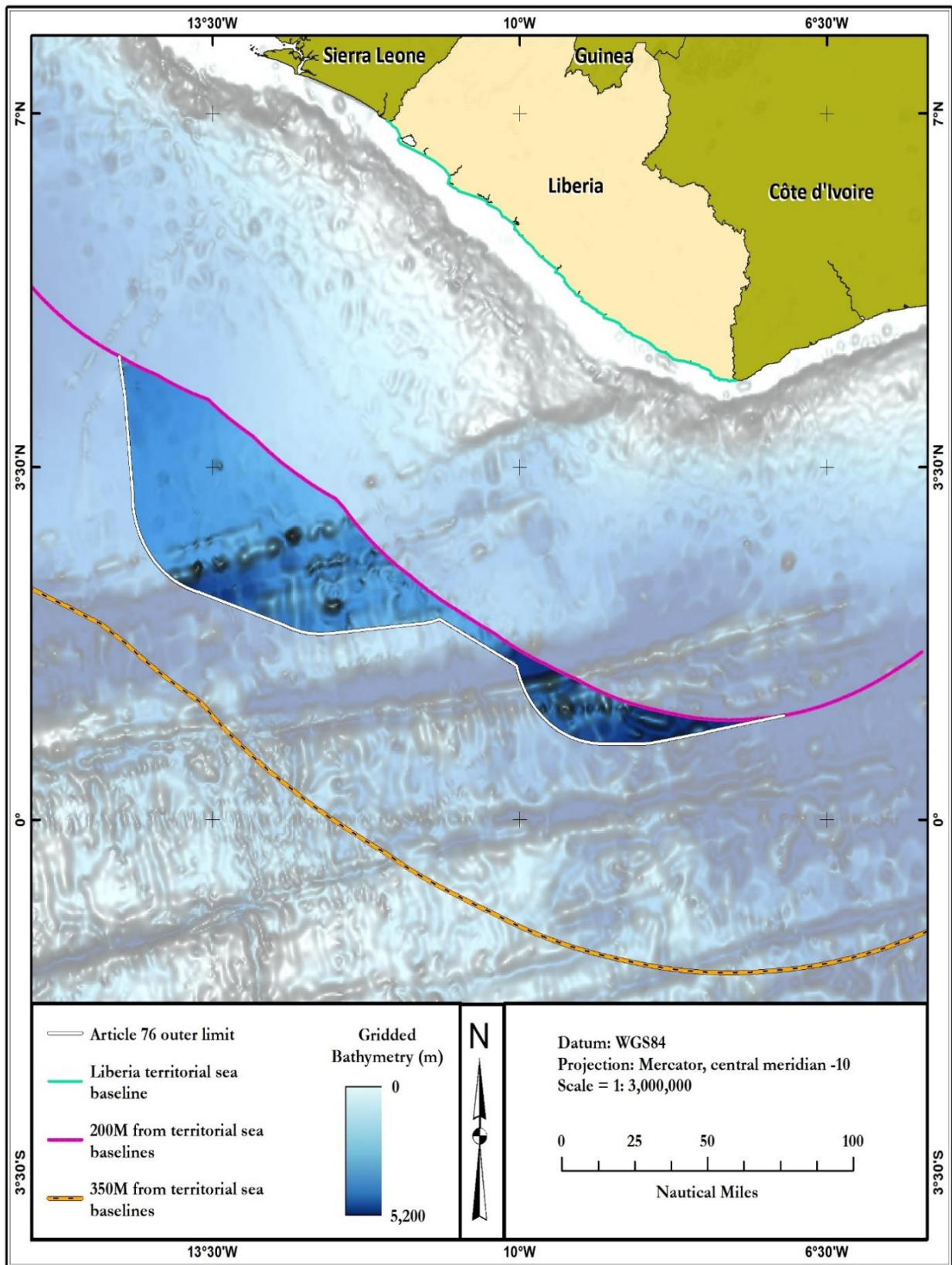


Figure 2. Map illustrating the outer limits of the continental shelf of the Republic of Liberia showing the outer limit line and area of continental shelf extending beyond 200 M from the territorial sea baseline.

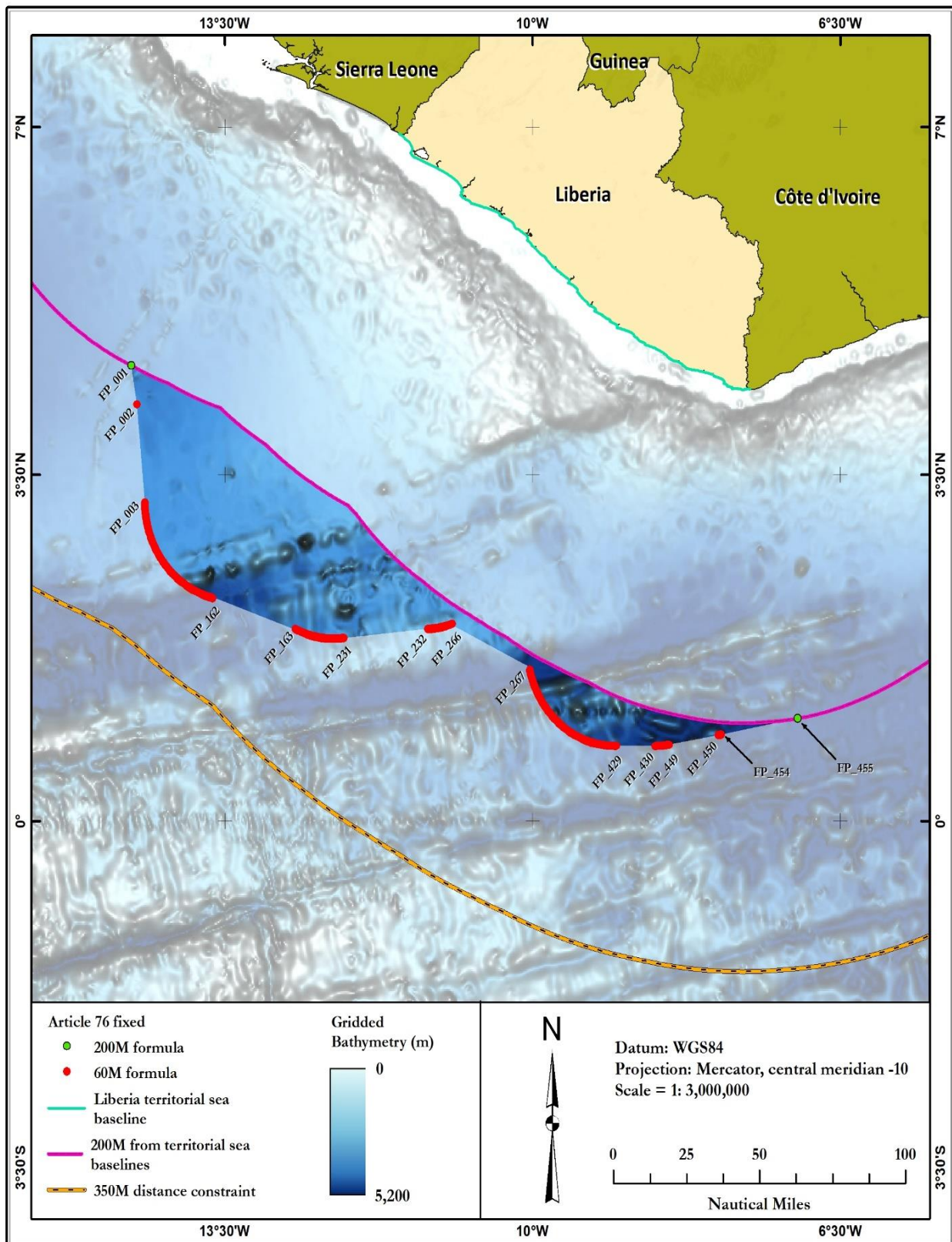


Figure 3. Outer limits of the continental shelf and provisions of Article 76 invoked. 200 M line shown as pink line. 350 M line shown as dark blue line. Hedberg Formula Points shown as red dots unless located on the Liberia 200 M line, in which case they shown as a blue line.



FIXED POINT	LATITUDE DD	LONGITUDE DD	LONGITUDE DMS	LATITUDE DMS	DISTANCE FROM PREVIOUS (M)	FOS POINT	ART. 76 METHOD
FP_001	4.603326	-14.563470	04° 36' 11.97" N	14° 33' 48.49" W	0.00	N/A	200M
FP_002	4.209737	-14.501578	04° 12' 35.05" N	14° 30' 05.68" W	23.79	FOS_05020040	60M
FP_003	3.220523	-14.412423	03° 13' 13.88" N	14° 24' 44.72" W	59.31	FOS_SAVE01KN	60M
FP_004	3.212150	-14.412255	03° 12' 43.74" N	14° 24' 44.12" W	0.50	FOS_SAVE01KN	60M
FP_005	3.203780	-14.412017	03° 12' 13.61" N	14° 24' 43.26" W	0.50	FOS_SAVE01KN	60M
FP_006	3.195411	-14.411710	03° 11' 43.48" N	14° 24' 42.16" W	0.50	FOS_SAVE01KN	60M
FP_007	3.187045	-14.411334	03° 11' 13.36" N	14° 24' 40.80" W	0.50	FOS_SAVE01KN	60M
FP_008	3.178683	-14.410888	03° 10' 43.26" N	14° 24' 39.20" W	0.50	FOS_SAVE01KN	60M
FP_009	3.170325	-14.410373	03° 10' 13.17" N	14° 24' 37.34" W	0.50	FOS_SAVE01KN	60M
FP_010	3.161971	-14.409789	03° 09' 43.10" N	14° 24' 35.24" W	0.50	FOS_SAVE01KN	60M
FP_011	3.153623	-14.409135	03° 09' 13.04" N	14° 24' 32.89" W	0.50	FOS_SAVE01KN	60M
FP_012	3.145280	-14.408413	03° 08' 43.01" N	14° 24' 30.29" W	0.50	FOS_SAVE01KN	60M
FP_013	3.136944	-14.407621	03° 08' 13.00" N	14° 24' 27.44" W	0.50	FOS_SAVE01KN	60M
FP_014	3.128615	-14.406760	03° 07' 43.01" N	14° 24' 24.34" W	0.50	FOS_SAVE01KN	60M
FP_015	3.120293	-14.405830	03° 07' 13.05" N	14° 24' 20.99" W	0.50	FOS_SAVE01KN	60M
FP_016	3.111979	-14.404831	03° 06' 43.12" N	14° 24' 17.39" W	0.50	FOS_SAVE01KN	60M
FP_017	3.103674	-14.403764	03° 06' 13.23" N	14° 24' 13.55" W	0.50	FOS_SAVE01KN	60M
FP_018	3.095378	-14.402627	03° 05' 43.36" N	14° 24' 09.46" W	0.50	FOS_SAVE01KN	60M
FP_019	3.087092	-14.401422	03° 05' 13.53" N	14° 24' 05.12" W	0.50	FOS_SAVE01KN	60M
FP_020	3.078816	-14.400148	03° 04' 43.74" N	14° 24' 00.53" W	0.50	FOS_SAVE01KN	60M
FP_021	3.070551	-14.398806	03° 04' 13.98" N	14° 23' 55.70" W	0.50	FOS_SAVE01KN	60M
FP_022	3.062298	-14.397395	03° 03' 44.27" N	14° 23' 50.62" W	0.50	FOS_SAVE01KN	60M
FP_023	3.054057	-14.395916	03° 03' 14.60" N	14° 23' 45.30" W	0.50	FOS_SAVE01KN	60M
FP_024	3.045828	-14.394369	03° 02' 44.98" N	14° 23' 39.73" W	0.50	FOS_SAVE01KN	60M
FP_025	3.037613	-14.392754	03° 02' 15.41" N	14° 23' 33.91" W	0.50	FOS_SAVE01KN	60M
FP_026	3.029412	-14.391070	03° 01' 45.88" N	14° 23' 27.85" W	0.50	FOS_SAVE01KN	60M
FP_027	3.021225	-14.389319	03° 01' 16.41" N	14° 23' 21.55" W	0.50	FOS_SAVE01KN	60M
FP_028	3.013053	-14.387500	03° 00' 46.99" N	14° 23' 15.00" W	0.50	FOS_SAVE01KN	60M
FP_029	3.004896	-14.385613	03° 00' 17.63" N	14° 23' 08.21" W	0.50	FOS_SAVE01KN	60M
FP_030	2.996755	-14.383659	02° 59' 48.32" N	14° 23' 01.17" W	0.50	FOS_SAVE01KN	60M
FP_031	2.988632	-14.381637	02° 59' 19.07" N	14° 22' 53.89" W	0.50	FOS_SAVE01KN	60M
FP_032	2.980525	-14.379548	02° 58' 49.89" N	14° 22' 46.37" W	0.50	FOS_SAVE01KN	60M
FP_033	2.972436	-14.377392	02° 58' 20.77" N	14° 22' 38.61" W	0.50	FOS_SAVE01KN	60M
FP_034	2.964366	-14.375170	02° 57' 51.72" N	14° 22' 30.61" W	0.50	FOS_SAVE01KN	60M
FP_035	2.956314	-14.372880	02° 57' 22.73" N	14° 22' 22.37" W	0.50	FOS_SAVE01KN	60M
FP_036	2.948282	-14.370524	02° 56' 53.81" N	14° 22' 13.89" W	0.50	FOS_SAVE01KN	60M
FP_037	2.940270	-14.368101	02° 56' 24.97" N	14° 22' 05.16" W	0.50	FOS_SAVE01KN	60M
FP_038	2.932278	-14.365612	02° 55' 56.20" N	14° 21' 56.20" W	0.50	FOS_SAVE01KN	60M
FP_039	2.924308	-14.363057	02° 55' 27.51" N	14° 21' 47.00" W	0.50	FOS_SAVE01KN	60M



FIXED POINT	LATITUDE DD	LONGITUDE DD	LONGITUDE DMS	LATITUDE DMS	DISTANCE FROM PREVIOUS (M)	FOS POINT	ART. 76 METHOD
FP_040	2.916359	-14.360436	02° 54' 58.89" N	14° 21' 37.57" W	0.50	FOS_SAVE01KN	60M
FP_041	2.908432	-14.357749	02° 54' 30.36" N	14° 21' 27.90" W	0.50	FOS_SAVE01KN	60M
FP_042	2.900528	-14.354997	02° 54' 01.90" N	14° 21' 17.99" W	0.50	FOS_SAVE01KN	60M
FP_043	2.892648	-14.352179	02° 53' 33.53" N	14° 21' 07.84" W	0.50	FOS_SAVE01KN	60M
FP_044	2.884791	-14.349296	02° 53' 05.25" N	14° 20' 57.47" W	0.50	FOS_SAVE01KN	60M
FP_045	2.876959	-14.346348	02° 52' 37.05" N	14° 20' 46.85" W	0.50	FOS_SAVE01KN	60M
FP_046	2.869152	-14.343336	02° 52' 08.95" N	14° 20' 36.01" W	0.50	FOS_SAVE01KN	60M
FP_047	2.861370	-14.340258	02° 51' 40.93" N	14° 20' 24.93" W	0.50	FOS_SAVE01KN	60M
FP_048	2.853614	-14.337117	02° 51' 13.01" N	14° 20' 13.62" W	0.50	FOS_SAVE01KN	60M
FP_049	2.845885	-14.333911	02° 50' 45.19" N	14° 20' 02.08" W	0.50	FOS_SAVE01KN	60M
FP_050	2.838183	-14.330642	02° 50' 17.46" N	14° 19' 50.31" W	0.50	FOS_SAVE01KN	60M
FP_051	2.830509	-14.327309	02° 49' 49.83" N	14° 19' 38.31" W	0.50	FOS_SAVE01KN	60M
FP_052	2.822863	-14.323912	02° 49' 22.31" N	14° 19' 26.08" W	0.50	FOS_SAVE01KN	60M
FP_053	2.815245	-14.320452	02° 48' 54.88" N	14° 19' 13.63" W	0.50	FOS_SAVE01KN	60M
FP_054	2.807657	-14.316929	02° 48' 27.57" N	14° 19' 00.95" W	0.50	FOS_SAVE01KN	60M
FP_055	2.800099	-14.313344	02° 48' 00.36" N	14° 18' 48.04" W	0.50	FOS_SAVE01KN	60M
FP_056	2.792570	-14.309696	02° 47' 33.25" N	14° 18' 34.91" W	0.50	FOS_SAVE01KN	60M
FP_057	2.785073	-14.305986	02° 47' 06.26" N	14° 18' 21.55" W	0.50	FOS_SAVE01KN	60M
FP_058	2.777607	-14.302214	02° 46' 39.39" N	14° 18' 07.97" W	0.50	FOS_SAVE01KN	60M
FP_059	2.770173	-14.298380	02° 46' 12.62" N	14° 17' 54.17" W	0.50	FOS_SAVE01KN	60M
FP_060	2.762771	-14.294485	02° 45' 45.98" N	14° 17' 40.14" W	0.50	FOS_SAVE01KN	60M
FP_061	2.755402	-14.290528	02° 45' 19.45" N	14° 17' 25.90" W	0.50	FOS_SAVE01KN	60M
FP_062	2.748067	-14.286511	02° 44' 53.04" N	14° 17' 11.44" W	0.50	FOS_SAVE01KN	60M
FP_063	2.740765	-14.282433	02° 44' 26.75" N	14° 16' 56.76" W	0.50	FOS_SAVE01KN	60M
FP_064	2.733498	-14.278295	02° 44' 00.59" N	14° 16' 41.86" W	0.50	FOS_SAVE01KN	60M
FP_065	2.726266	-14.274097	02° 43' 34.56" N	14° 16' 26.75" W	0.50	FOS_SAVE01KN	60M
FP_066	2.719069	-14.269839	02° 43' 08.65" N	14° 16' 11.42" W	0.50	FOS_SAVE01KN	60M
FP_067	2.711908	-14.265521	02° 42' 42.87" N	14° 15' 55.88" W	0.50	FOS_SAVE01KN	60M
FP_068	2.704783	-14.261145	02° 42' 17.22" N	14° 15' 40.12" W	0.50	FOS_SAVE01KN	60M
FP_069	2.697695	-14.256710	02° 41' 51.70" N	14° 15' 24.15" W	0.50	FOS_SAVE01KN	60M
FP_070	2.690645	-14.252216	02° 41' 26.32" N	14° 15' 07.98" W	0.50	FOS_SAVE01KN	60M
FP_071	2.683633	-14.247664	02° 41' 01.08" N	14° 14' 51.59" W	0.50	FOS_SAVE01KN	60M
FP_072	2.676659	-14.243054	02° 40' 35.97" N	14° 14' 34.99" W	0.50	FOS_SAVE01KN	60M
FP_073	2.669724	-14.238386	02° 40' 11.00" N	14° 14' 18.19" W	0.50	FOS_SAVE01KN	60M
FP_074	2.662828	-14.233661	02° 39' 46.18" N	14° 14' 01.18" W	0.50	FOS_SAVE01KN	60M
FP_075	2.655972	-14.228880	02° 39' 21.50" N	14° 13' 43.97" W	0.50	FOS_SAVE01KN	60M
FP_076	2.649156	-14.224041	02° 38' 56.96" N	14° 13' 26.55" W	0.50	FOS_SAVE01KN	60M
FP_077	2.642381	-14.219147	02° 38' 32.57" N	14° 13' 08.93" W	0.50	FOS_SAVE01KN	60M
FP_078	2.635647	-14.214196	02° 38' 08.33" N	14° 12' 51.11" W	0.50	FOS_SAVE01KN	60M
FP_079	2.628955	-14.209190	02° 37' 44.24" N	14° 12' 33.09" W	0.50	FOS_SAVE01KN	60M



FIXED POINT	LATITUDE DD	LONGITUDE DD	LONGITUDE DMS	LATITUDE DMS	DISTANCE FROM PREVIOUS (M)	FOS POINT	ART. 76 METHOD
FP_080	2.622305	-14.204129	02° 37' 20.30" N	14° 12' 14.86" W	0.50	FOS_SAVE01KN	60M
FP_081	2.615698	-14.199013	02° 36' 56.51" N	14° 11' 56.45" W	0.50	FOS_SAVE01KN	60M
FP_082	2.609134	-14.193842	02° 36' 32.88" N	14° 11' 37.83" W	0.50	FOS_SAVE01KN	60M
FP_083	2.602613	-14.188618	02° 36' 09.41" N	14° 11' 19.02" W	0.50	FOS_SAVE01KN	60M
FP_084	2.596136	-14.183339	02° 35' 46.09" N	14° 11' 00.02" W	0.50	FOS_SAVE01KN	60M
FP_085	2.589704	-14.178007	02° 35' 22.93" N	14° 10' 40.83" W	0.50	FOS_SAVE01KN	60M
FP_086	2.583317	-14.172622	02° 34' 59.94" N	14° 10' 21.44" W	0.50	FOS_SAVE01KN	60M
FP_087	2.576975	-14.167184	02° 34' 37.11" N	14° 10' 01.86" W	0.50	FOS_SAVE01KN	60M
FP_088	2.570678	-14.161694	02° 34' 14.44" N	14° 09' 42.10" W	0.50	FOS_SAVE01KN	60M
FP_089	2.564428	-14.156152	02° 33' 51.94" N	14° 09' 22.15" W	0.50	FOS_SAVE01KN	60M
FP_090	2.558225	-14.150559	02° 33' 29.61" N	14° 09' 02.01" W	0.50	FOS_SAVE01KN	60M
FP_091	2.552068	-14.144914	02° 33' 07.45" N	14° 08' 41.69" W	0.50	FOS_SAVE01KN	60M
FP_092	2.545960	-14.139219	02° 32' 45.45" N	14° 08' 21.19" W	0.50	FOS_SAVE01KN	60M
FP_093	2.539899	-14.133473	02° 32' 23.63" N	14° 08' 00.50" W	0.50	FOS_SAVE01KN	60M
FP_094	2.533886	-14.127677	02° 32' 01.99" N	14° 07' 39.64" W	0.50	FOS_SAVE01KN	60M
FP_095	2.527922	-14.121832	02° 31' 40.52" N	14° 07' 18.60" W	0.50	FOS_SAVE01KN	60M
FP_096	2.522007	-14.115938	02° 31' 19.23" N	14° 06' 57.38" W	0.50	FOS_SAVE01KN	60M
FP_097	2.516142	-14.109995	02° 30' 58.11" N	14° 06' 35.98" W	0.50	FOS_SAVE01KN	60M
FP_098	2.510327	-14.104003	02° 30' 37.18" N	14° 06' 14.41" W	0.50	FOS_SAVE01KN	60M
FP_099	2.504562	-14.097964	02° 30' 16.42" N	14° 05' 52.67" W	0.50	FOS_SAVE01KN	60M
FP_100	2.498848	-14.091877	02° 29' 55.85" N	14° 05' 30.76" W	0.50	FOS_SAVE01KN	60M
FP_101	2.493185	-14.085743	02° 29' 35.47" N	14° 05' 08.67" W	0.50	FOS_SAVE01KN	60M
FP_102	2.487574	-14.079562	02° 29' 15.27" N	14° 04' 46.42" W	0.50	FOS_SAVE01KN	60M
FP_103	2.482015	-14.073335	02° 28' 55.25" N	14° 04' 24.01" W	0.50	FOS_SAVE01KN	60M
FP_104	2.476508	-14.067063	02° 28' 35.43" N	14° 04' 01.43" W	0.50	FOS_SAVE01KN	60M
FP_105	2.471054	-14.060745	02° 28' 15.79" N	14° 03' 38.68" W	0.50	FOS_SAVE01KN	60M
FP_106	2.465652	-14.054382	02° 27' 56.35" N	14° 03' 15.77" W	0.50	FOS_SAVE01KN	60M
FP_107	2.460305	-14.047974	02° 27' 37.10" N	14° 02' 52.71" W	0.50	FOS_SAVE01KN	60M
FP_108	2.455011	-14.041523	02° 27' 18.04" N	14° 02' 29.48" W	0.50	FOS_SAVE01KN	60M
FP_109	2.449771	-14.035028	02° 26' 59.18" N	14° 02' 06.10" W	0.50	FOS_SAVE01KN	60M
FP_110	2.444587	-14.028490	02° 26' 40.51" N	14° 01' 42.56" W	0.50	FOS_SAVE01KN	60M
FP_111	2.439456	-14.021909	02° 26' 22.04" N	14° 01' 18.87" W	0.50	FOS_SAVE01KN	60M
FP_112	2.434382	-14.015286	02° 26' 03.77" N	14° 00' 55.03" W	0.50	FOS_SAVE01KN	60M
FP_113	2.429363	-14.008621	02° 25' 45.71" N	14° 00' 31.04" W	0.50	FOS_SAVE01KN	60M
FP_114	2.424400	-14.001915	02° 25' 27.84" N	14° 00' 06.89" W	0.50	FOS_SAVE01KN	60M
FP_115	2.419493	-13.995168	02° 25' 10.17" N	13° 59' 42.61" W	0.50	FOS_SAVE01KN	60M
FP_116	2.414643	-13.988381	02° 24' 52.71" N	13° 59' 18.17" W	0.50	FOS_SAVE01KN	60M
FP_117	2.409850	-13.981554	02° 24' 35.46" N	13° 58' 53.59" W	0.50	FOS_SAVE01KN	60M
FP_118	2.405114	-13.974687	02° 24' 18.41" N	13° 58' 28.87" W	0.50	FOS_SAVE01KN	60M
FP_119	2.400436	-13.967782	02° 24' 01.57" N	13° 58' 04.01" W	0.50	FOS_SAVE01KN	60M



FIXED POINT	LATITUDE DD	LONGITUDE DD	LONGITUDE DMS	LATITUDE DMS	DISTANCE FROM PREVIOUS (M)	FOS POINT	ART. 76 METHOD
FP_120	2.395816	-13.960838	02° 23' 44.94" N	13° 57' 39.02" W	0.50	FOS_SAVE01KN	60M
FP_121	2.391254	-13.953856	02° 23' 28.52" N	13° 57' 13.88" W	0.50	FOS_SAVE01KN	60M
FP_122	2.386751	-13.946836	02° 23' 12.30" N	13° 56' 48.61" W	0.50	FOS_SAVE01KN	60M
FP_123	2.382307	-13.939780	02° 22' 56.31" N	13° 56' 23.21" W	0.50	FOS_SAVE01KN	60M
FP_124	2.377922	-13.932687	02° 22' 40.52" N	13° 55' 57.67" W	0.50	FOS_SAVE01KN	60M
FP_125	2.373597	-13.925558	02° 22' 24.95" N	13° 55' 32.01" W	0.50	FOS_SAVE01KN	60M
FP_126	2.369332	-13.918393	02° 22' 09.59" N	13° 55' 06.22" W	0.50	FOS_SAVE01KN	60M
FP_127	2.365126	-13.911193	02° 21' 54.45" N	13° 54' 40.30" W	0.50	FOS_SAVE01KN	60M
FP_128	2.360982	-13.903959	02° 21' 39.53" N	13° 54' 14.25" W	0.50	FOS_SAVE01KN	60M
FP_129	2.356897	-13.896691	02° 21' 24.83" N	13° 53' 48.09" W	0.50	FOS_SAVE01KN	60M
FP_130	2.352874	-13.889389	02° 21' 10.35" N	13° 53' 21.80" W	0.50	FOS_SAVE01KN	60M
FP_131	2.348913	-13.882055	02° 20' 56.09" N	13° 52' 55.40" W	0.50	FOS_SAVE01KN	60M
FP_132	2.345012	-13.874687	02° 20' 42.04" N	13° 52' 28.87" W	0.50	FOS_SAVE01KN	60M
FP_133	2.341174	-13.867288	02° 20' 28.23" N	13° 52' 02.24" W	0.50	FOS_SAVE01KN	60M
FP_134	2.337398	-13.859857	02° 20' 14.63" N	13° 51' 35.49" W	0.50	FOS_SAVE01KN	60M
FP_135	2.333684	-13.852395	02° 20' 01.26" N	13° 51' 08.62" W	0.50	FOS_SAVE01KN	60M
FP_136	2.330033	-13.844903	02° 19' 48.12" N	13° 50' 41.65" W	0.50	FOS_SAVE01KN	60M
FP_137	2.326445	-13.837381	02° 19' 35.20" N	13° 50' 14.57" W	0.50	FOS_SAVE01KN	60M
FP_138	2.322919	-13.829829	02° 19' 22.51" N	13° 49' 47.38" W	0.50	FOS_SAVE01KN	60M
FP_139	2.319457	-13.822249	02° 19' 10.05" N	13° 49' 20.09" W	0.50	FOS_SAVE01KN	60M
FP_140	2.316059	-13.814640	02° 18' 57.81" N	13° 48' 52.70" W	0.50	FOS_SAVE01KN	60M
FP_141	2.312725	-13.807003	02° 18' 45.81" N	13° 48' 25.21" W	0.50	FOS_SAVE01KN	60M
FP_142	2.309455	-13.799339	02° 18' 34.04" N	13° 47' 57.62" W	0.50	FOS_SAVE01KN	60M
FP_143	2.306249	-13.791648	02° 18' 22.50" N	13° 47' 29.93" W	0.50	FOS_SAVE01KN	60M
FP_144	2.303107	-13.783931	02° 18' 11.19" N	13° 47' 02.15" W	0.50	FOS_SAVE01KN	60M
FP_145	2.300031	-13.776188	02° 18' 00.11" N	13° 46' 34.28" W	0.50	FOS_SAVE01KN	60M
FP_146	2.297019	-13.768420	02° 17' 49.27" N	13° 46' 06.31" W	0.50	FOS_SAVE01KN	60M
FP_147	2.294072	-13.760627	02° 17' 38.66" N	13° 45' 38.26" W	0.50	FOS_SAVE01KN	60M
FP_148	2.291191	-13.752810	02° 17' 28.29" N	13° 45' 10.12" W	0.50	FOS_SAVE01KN	60M
FP_149	2.288375	-13.744970	02° 17' 18.15" N	13° 44' 41.89" W	0.50	FOS_SAVE01KN	60M
FP_150	2.285626	-13.737107	02° 17' 08.25" N	13° 44' 13.58" W	0.50	FOS_SAVE01KN	60M
FP_151	2.282942	-13.729221	02° 16' 58.59" N	13° 43' 45.19" W	0.50	FOS_SAVE01KN	60M
FP_152	2.280324	-13.721313	02° 16' 49.17" N	13° 43' 16.73" W	0.50	FOS_SAVE01KN	60M
FP_153	2.277773	-13.713384	02° 16' 39.98" N	13° 42' 48.18" W	0.50	FOS_SAVE01KN	60M
FP_154	2.275288	-13.705434	02° 16' 31.04" N	13° 42' 19.56" W	0.50	FOS_SAVE01KN	60M
FP_155	2.272870	-13.697464	02° 16' 22.33" N	13° 41' 50.87" W	0.50	FOS_SAVE01KN	60M
FP_156	2.270518	-13.689474	02° 16' 13.87" N	13° 41' 22.10" W	0.50	FOS_SAVE01KN	60M
FP_157	2.268234	-13.681464	02° 16' 05.64" N	13° 40' 53.27" W	0.50	FOS_SAVE01KN	60M
FP_158	2.266017	-13.673437	02° 15' 57.66" N	13° 40' 24.37" W	0.50	FOS_SAVE01KN	60M
FP_159	2.263867	-13.665391	02° 15' 49.92" N	13° 39' 55.41" W	0.50	FOS_SAVE01KN	60M



FIXED POINT	LATITUDE DD	LONGITUDE DD	LONGITUDE DMS	LATITUDE DMS	DISTANCE FROM PREVIOUS (M)	FOS POINT	ART. 76 METHOD
FP_160	2.261784	-13.657327	02° 15' 42.42" N	13° 39' 26.38" W	0.50	FOS_SAVE01KN	60M
FP_161	2.259770	-13.649247	02° 15' 35.17" N	13° 38' 57.29" W	0.50	FOS_SAVE01KN	60M
FP_162	2.257823	-13.641150	02° 15' 28.16" N	13° 38' 28.14" W	0.50	FOS_SAVE01KN	60M
FP_163	1.942599	-12.699574	01° 56' 33.36" N	12° 41' 58.47" W	59.61	FOS_LUSI08AR	60M
FP_164	1.939057	-12.692032	01° 56' 20.61" N	12° 41' 31.31" W	0.50	FOS_LUSI08AR	60M
FP_165	1.935579	-12.684460	01° 56' 08.09" N	12° 41' 04.06" W	0.50	FOS_LUSI08AR	60M
FP_166	1.932165	-12.676860	01° 55' 55.79" N	12° 40' 36.70" W	0.50	FOS_LUSI08AR	60M
FP_167	1.928814	-12.669233	01° 55' 43.73" N	12° 40' 09.24" W	0.50	FOS_LUSI08AR	60M
FP_168	1.925527	-12.661577	01° 55' 31.90" N	12° 39' 41.68" W	0.50	FOS_LUSI08AR	60M
FP_169	1.922305	-12.653895	01° 55' 20.30" N	12° 39' 14.02" W	0.50	FOS_LUSI08AR	60M
FP_170	1.919147	-12.646186	01° 55' 08.93" N	12° 38' 46.27" W	0.50	FOS_LUSI08AR	60M
FP_171	1.916054	-12.638452	01° 54' 57.79" N	12° 38' 18.43" W	0.50	FOS_LUSI08AR	60M
FP_172	1.913026	-12.630692	01° 54' 46.89" N	12° 37' 50.49" W	0.50	FOS_LUSI08AR	60M
FP_173	1.910062	-12.622908	01° 54' 36.22" N	12° 37' 22.47" W	0.50	FOS_LUSI08AR	60M
FP_174	1.907165	-12.615099	01° 54' 25.79" N	12° 36' 54.36" W	0.50	FOS_LUSI08AR	60M
FP_175	1.904332	-12.607266	01° 54' 15.60" N	12° 36' 26.16" W	0.50	FOS_LUSI08AR	60M
FP_176	1.901566	-12.599411	01° 54' 05.64" N	12° 35' 57.88" W	0.50	FOS_LUSI08AR	60M
FP_177	1.898865	-12.591532	01° 53' 55.91" N	12° 35' 29.52" W	0.50	FOS_LUSI08AR	60M
FP_178	1.896230	-12.583632	01° 53' 46.43" N	12° 35' 01.08" W	0.50	FOS_LUSI08AR	60M
FP_179	1.893662	-12.575710	01° 53' 37.18" N	12° 34' 32.56" W	0.50	FOS_LUSI08AR	60M
FP_180	1.891160	-12.567767	01° 53' 28.18" N	12° 34' 03.96" W	0.50	FOS_LUSI08AR	60M
FP_181	1.888725	-12.559804	01° 53' 19.41" N	12° 33' 35.29" W	0.50	FOS_LUSI08AR	60M
FP_182	1.886357	-12.551821	01° 53' 10.88" N	12° 33' 06.56" W	0.50	FOS_LUSI08AR	60M
FP_183	1.884056	-12.543819	01° 53' 02.60" N	12° 32' 37.75" W	0.50	FOS_LUSI08AR	60M
FP_184	1.881821	-12.535797	01° 52' 54.56" N	12° 32' 08.87" W	0.50	FOS_LUSI08AR	60M
FP_185	1.879654	-12.527758	01° 52' 46.76" N	12° 31' 39.93" W	0.50	FOS_LUSI08AR	60M
FP_186	1.877555	-12.519701	01° 52' 39.20" N	12° 31' 10.92" W	0.50	FOS_LUSI08AR	60M
FP_187	1.875523	-12.511627	01° 52' 31.88" N	12° 30' 41.86" W	0.50	FOS_LUSI08AR	60M
FP_188	1.873559	-12.503536	01° 52' 24.81" N	12° 30' 12.73" W	0.50	FOS_LUSI08AR	60M
FP_189	1.871662	-12.495430	01° 52' 17.98" N	12° 29' 43.55" W	0.50	FOS_LUSI08AR	60M
FP_190	1.869834	-12.487308	01° 52' 11.40" N	12° 29' 14.31" W	0.50	FOS_LUSI08AR	60M
FP_191	1.868074	-12.479171	01° 52' 05.07" N	12° 28' 45.01" W	0.50	FOS_LUSI08AR	60M
FP_192	1.866382	-12.471019	01° 51' 58.98" N	12° 28' 15.67" W	0.50	FOS_LUSI08AR	60M
FP_193	1.864758	-12.462855	01° 51' 53.13" N	12° 27' 46.28" W	0.50	FOS_LUSI08AR	60M
FP_194	1.863203	-12.454677	01° 51' 47.53" N	12° 27' 16.84" W	0.50	FOS_LUSI08AR	60M
FP_195	1.861717	-12.446486	01° 51' 42.18" N	12° 26' 47.35" W	0.50	FOS_LUSI08AR	60M
FP_196	1.860299	-12.438283	01° 51' 37.08" N	12° 26' 17.82" W	0.50	FOS_LUSI08AR	60M
FP_197	1.858950	-12.430069	01° 51' 32.22" N	12° 25' 48.25" W	0.50	FOS_LUSI08AR	60M
FP_198	1.857670	-12.421844	01° 51' 27.61" N	12° 25' 18.64" W	0.50	FOS_LUSI08AR	60M
FP_199	1.856458	-12.413609	01° 51' 23.25" N	12° 24' 48.99" W	0.50	FOS_LUSI08AR	60M



FIXED POINT	LATITUDE DD	LONGITUDE DD	LONGITUDE DMS	LATITUDE DMS	DISTANCE FROM PREVIOUS (M)	FOS POINT	ART. 76 METHOD
FP_200	1.855316	-12.405364	01° 51' 19.14" N	12° 24' 19.31" W	0.50	FOS_LUSI08AR	60M
FP_201	1.854243	-12.397110	01° 51' 15.27" N	12° 23' 49.60" W	0.50	FOS_LUSI08AR	60M
FP_202	1.853239	-12.388847	01° 51' 11.66" N	12° 23' 19.85" W	0.50	FOS_LUSI08AR	60M
FP_203	1.852305	-12.380577	01° 51' 08.30" N	12° 22' 50.08" W	0.50	FOS_LUSI08AR	60M
FP_204	1.851439	-12.372299	01° 51' 05.18" N	12° 22' 20.27" W	0.50	FOS_LUSI08AR	60M
FP_205	1.850643	-12.364013	01° 51' 02.32" N	12° 21' 50.45" W	0.50	FOS_LUSI08AR	60M
FP_206	1.849917	-12.355722	01° 50' 59.70" N	12° 21' 20.60" W	0.50	FOS_LUSI08AR	60M
FP_207	1.849260	-12.347425	01° 50' 57.34" N	12° 20' 50.73" W	0.50	FOS_LUSI08AR	60M
FP_208	1.848673	-12.339123	01° 50' 55.22" N	12° 20' 20.84" W	0.50	FOS_LUSI08AR	60M
FP_209	1.848155	-12.330816	01° 50' 53.36" N	12° 19' 50.94" W	0.50	FOS_LUSI08AR	60M
FP_210	1.847707	-12.322505	01° 50' 51.74" N	12° 19' 21.02" W	0.50	FOS_LUSI08AR	60M
FP_211	1.847328	-12.314191	01° 50' 50.38" N	12° 18' 51.09" W	0.50	FOS_LUSI08AR	60M
FP_212	1.847020	-12.305874	01° 50' 49.27" N	12° 18' 21.15" W	0.50	FOS_LUSI08AR	60M
FP_213	1.846780	-12.297555	01° 50' 48.41" N	12° 17' 51.20" W	0.50	FOS_LUSI08AR	60M
FP_214	1.846611	-12.289234	01° 50' 47.80" N	12° 17' 21.24" W	0.50	FOS_LUSI08AR	60M
FP_215	1.846511	-12.280912	01° 50' 47.44" N	12° 16' 51.28" W	0.50	FOS_LUSI08AR	60M
FP_216	1.846481	-12.272589	01° 50' 47.33" N	12° 16' 21.32" W	0.50	FOS_LUSI08AR	60M
FP_217	1.846521	-12.264266	01° 50' 47.48" N	12° 15' 51.36" W	0.50	FOS_LUSI08AR	60M
FP_218	1.846631	-12.255944	01° 50' 47.87" N	12° 15' 21.40" W	0.50	FOS_LUSI08AR	60M
FP_219	1.846810	-12.247624	01° 50' 48.52" N	12° 14' 51.45" W	0.50	FOS_LUSI08AR	60M
FP_220	1.847059	-12.239305	01° 50' 49.41" N	12° 14' 21.50" W	0.50	FOS_LUSI08AR	60M
FP_221	1.847378	-12.230988	01° 50' 50.56" N	12° 13' 51.56" W	0.50	FOS_LUSI08AR	60M
FP_222	1.847766	-12.222674	01° 50' 51.96" N	12° 13' 21.63" W	0.50	FOS_LUSI08AR	60M
FP_223	1.848224	-12.214364	01° 50' 53.61" N	12° 12' 51.71" W	0.50	FOS_LUSI08AR	60M
FP_224	1.848752	-12.206058	01° 50' 55.51" N	12° 12' 21.81" W	0.50	FOS_LUSI08AR	60M
FP_225	1.849349	-12.197756	01° 50' 57.66" N	12° 11' 51.92" W	0.50	FOS_LUSI08AR	60M
FP_226	1.850016	-12.189460	01° 51' 00.06" N	12° 11' 22.06" W	0.50	FOS_LUSI08AR	60M
FP_227	1.850752	-12.181170	01° 51' 02.71" N	12° 10' 52.21" W	0.50	FOS_LUSI08AR	60M
FP_228	1.851558	-12.172885	01° 51' 05.61" N	12° 10' 22.39" W	0.50	FOS_LUSI08AR	60M
FP_229	1.852433	-12.164608	01° 51' 08.76" N	12° 09' 52.59" W	0.50	FOS_LUSI08AR	60M
FP_230	1.853377	-12.156339	01° 51' 12.16" N	12° 09' 22.82" W	0.50	FOS_LUSI08AR	60M
FP_231	1.854391	-12.148077	01° 51' 15.81" N	12° 08' 53.08" W	0.50	FOS_LUSI08AR	60M
FP_232	1.943973	-11.191041	01° 56' 38.30" N	11° 11' 27.75" W	57.74	FOS_M16_1	60M
FP_233	1.944350	-11.182727	01° 56' 39.66" N	11° 10' 57.82" W	0.50	FOS_M16_1	60M
FP_234	1.944796	-11.174415	01° 56' 41.27" N	11° 10' 27.90" W	0.50	FOS_M16_1	60M
FP_235	1.945313	-11.166108	01° 56' 43.13" N	11° 09' 57.99" W	0.50	FOS_M16_1	60M
FP_236	1.945899	-11.157805	01° 56' 45.23" N	11° 09' 28.10" W	0.50	FOS_M16_1	60M
FP_237	1.946554	-11.149508	01° 56' 47.59" N	11° 08' 58.23" W	0.50	FOS_M16_1	60M
FP_238	1.947279	-11.141216	01° 56' 50.20" N	11° 08' 28.38" W	0.50	FOS_M16_1	60M
FP_239	1.948073	-11.132930	01° 56' 53.06" N	11° 07' 58.55" W	0.50	FOS_M16_1	60M



FIXED POINT	LATITUDE DD	LONGITUDE DD	LONGITUDE DMS	LATITUDE DMS	DISTANCE FROM PREVIOUS (M)	FOS POINT	ART. 76 METHOD
FP_240	1.948937	-11.124651	01° 56' 56.17" N	11° 07' 28.74" W	0.50	FOS_M16_1	60M
FP_241	1.949870	-11.116380	01° 56' 59.53" N	11° 06' 58.97" W	0.50	FOS_M16_1	60M
FP_242	1.950873	-11.108116	01° 57' 03.14" N	11° 06' 29.22" W	0.50	FOS_M16_1	60M
FP_243	1.951944	-11.099862	01° 57' 07.00" N	11° 05' 59.50" W	0.50	FOS_M16_1	60M
FP_244	1.953085	-11.091616	01° 57' 11.11" N	11° 05' 29.82" W	0.50	FOS_M16_1	60M
FP_245	1.954295	-11.083380	01° 57' 15.46" N	11° 05' 00.17" W	0.50	FOS_M16_1	60M
FP_246	1.955573	-11.075155	01° 57' 20.06" N	11° 04' 30.56" W	0.50	FOS_M16_1	60M
FP_247	1.956921	-11.066940	01° 57' 24.92" N	11° 04' 00.98" W	0.50	FOS_M16_1	60M
FP_248	1.958337	-11.058737	01° 57' 30.01" N	11° 03' 31.45" W	0.50	FOS_M16_1	60M
FP_249	1.959822	-11.050545	01° 57' 35.36" N	11° 03' 01.96" W	0.50	FOS_M16_1	60M
FP_250	1.961376	-11.042366	01° 57' 40.95" N	11° 02' 32.52" W	0.50	FOS_M16_1	60M
FP_251	1.962998	-11.034201	01° 57' 46.79" N	11° 02' 03.12" W	0.50	FOS_M16_1	60M
FP_252	1.964689	-11.026049	01° 57' 52.88" N	11° 01' 33.78" W	0.50	FOS_M16_1	60M
FP_253	1.966447	-11.017911	01° 57' 59.21" N	11° 01' 04.48" W	0.50	FOS_M16_1	60M
FP_254	1.968274	-11.009788	01° 58' 05.79" N	11° 00' 35.24" W	0.50	FOS_M16_1	60M
FP_255	1.970169	-11.001681	01° 58' 12.61" N	11° 00' 06.05" W	0.50	FOS_M16_1	60M
FP_256	1.972132	-10.993590	01° 58' 19.67" N	10° 59' 36.92" W	0.50	FOS_M16_1	60M
FP_257	1.974162	-10.985515	01° 58' 26.98" N	10° 59' 07.85" W	0.50	FOS_M16_1	60M
FP_258	1.976260	-10.977457	01° 58' 34.54" N	10° 58' 38.84" W	0.50	FOS_M16_1	60M
FP_259	1.978425	-10.969417	01° 58' 42.33" N	10° 58' 09.90" W	0.50	FOS_M16_1	60M
FP_260	1.980658	-10.961394	01° 58' 50.37" N	10° 57' 41.02" W	0.50	FOS_M16_1	60M
FP_261	1.982958	-10.953391	01° 58' 58.65" N	10° 57' 12.21" W	0.50	FOS_M16_1	60M
FP_262	1.985325	-10.945407	01° 59' 07.17" N	10° 56' 43.47" W	0.50	FOS_M16_1	60M
FP_263	1.987759	-10.937443	01° 59' 15.93" N	10° 56' 14.79" W	0.50	FOS_M16_1	60M
FP_264	1.990259	-10.929499	01° 59' 24.93" N	10° 55' 46.20" W	0.50	FOS_M16_1	60M
FP_265	1.992826	-10.921576	01° 59' 34.17" N	10° 55' 17.68" W	0.50	FOS_M16_1	60M
FP_266	1.995459	-10.913675	01° 59' 43.65" N	10° 54' 49.23" W	0.50	FOS_M16_1	60M
FP_267	1.532358	-10.033345	01° 31' 56.49" N	10° 02' 00.04" W	59.68	FOS_V2713_3	60M
FP_268	1.524220	-10.031381	01° 31' 27.19" N	10° 01' 52.97" W	0.50	FOS_V2713_3	60M
FP_269	1.516099	-10.029350	01° 30' 57.96" N	10° 01' 45.66" W	0.50	FOS_V2713_3	60M
FP_270	1.507995	-10.027252	01° 30' 28.78" N	10° 01' 38.11" W	0.50	FOS_V2713_3	60M
FP_271	1.499909	-10.025087	01° 29' 59.67" N	10° 01' 30.31" W	0.50	FOS_V2713_3	60M
FP_272	1.491842	-10.022855	01° 29' 30.63" N	10° 01' 22.28" W	0.50	FOS_V2713_3	60M
FP_273	1.483793	-10.020556	01° 29' 01.66" N	10° 01' 14.00" W	0.50	FOS_V2713_3	60M
FP_274	1.475764	-10.018191	01° 28' 32.75" N	10° 01' 05.49" W	0.50	FOS_V2713_3	60M
FP_275	1.467755	-10.015760	01° 28' 03.92" N	10° 00' 56.73" W	0.50	FOS_V2713_3	60M
FP_276	1.459767	-10.013262	01° 27' 35.16" N	10° 00' 47.74" W	0.50	FOS_V2713_3	60M
FP_277	1.451800	-10.010698	01° 27' 06.48" N	10° 00' 38.51" W	0.50	FOS_V2713_3	60M
FP_278	1.443855	-10.008068	01° 26' 37.88" N	10° 00' 29.05" W	0.50	FOS_V2713_3	60M
FP_279	1.435932	-10.005373	01° 26' 09.36" N	10° 00' 19.34" W	0.50	FOS_V2713_3	60M



FIXED POINT	LATITUDE DD	LONGITUDE DD	LONGITUDE DMS	LATITUDE DMS	DISTANCE FROM PREVIOUS (M)	FOS POINT	ART. 76 METHOD
FP_280	1.428032	-10.002612	01° 25' 40.92" N	10° 00' 09.40" W	0.50	FOS_V2713_3	60M
FP_281	1.420156	-9.999786	01° 25' 12.56" N	09° 59' 59.23" W	0.50	FOS_V2713_3	60M
FP_282	1.412303	-9.996895	01° 24' 44.29" N	09° 59' 48.82" W	0.50	FOS_V2713_3	60M
FP_283	1.404475	-9.993938	01° 24' 16.11" N	09° 59' 38.18" W	0.50	FOS_V2713_3	60M
FP_284	1.396672	-9.990918	01° 23' 48.02" N	09° 59' 27.30" W	0.50	FOS_V2713_3	60M
FP_285	1.388894	-9.987832	01° 23' 20.02" N	09° 59' 16.20" W	0.50	FOS_V2713_3	60M
FP_286	1.381143	-9.984683	01° 22' 52.11" N	09° 59' 04.86" W	0.50	FOS_V2713_3	60M
FP_287	1.373418	-9.981469	01° 22' 24.31" N	09° 58' 53.29" W	0.50	FOS_V2713_3	60M
FP_288	1.365721	-9.978192	01° 21' 56.60" N	09° 58' 41.49" W	0.50	FOS_V2713_3	60M
FP_289	1.358051	-9.974851	01° 21' 28.98" N	09° 58' 29.46" W	0.50	FOS_V2713_3	60M
FP_290	1.350410	-9.971446	01° 21' 01.48" N	09° 58' 17.21" W	0.50	FOS_V2713_3	60M
FP_291	1.342797	-9.967979	01° 20' 34.07" N	09° 58' 04.72" W	0.50	FOS_V2713_3	60M
FP_292	1.335214	-9.964448	01° 20' 06.77" N	09° 57' 52.01" W	0.50	FOS_V2713_3	60M
FP_293	1.327661	-9.960855	01° 19' 39.58" N	09° 57' 39.08" W	0.50	FOS_V2713_3	60M
FP_294	1.320138	-9.957200	01° 19' 12.50" N	09° 57' 25.92" W	0.50	FOS_V2713_3	60M
FP_295	1.312646	-9.953482	01° 18' 45.52" N	09° 57' 12.54" W	0.50	FOS_V2713_3	60M
FP_296	1.305185	-9.949703	01° 18' 18.67" N	09° 56' 58.93" W	0.50	FOS_V2713_3	60M
FP_297	1.297756	-9.945862	01° 17' 51.92" N	09° 56' 45.10" W	0.50	FOS_V2713_3	60M
FP_298	1.290360	-9.941959	01° 17' 25.30" N	09° 56' 31.05" W	0.50	FOS_V2713_3	60M
FP_299	1.282997	-9.937996	01° 16' 58.79" N	09° 56' 16.79" W	0.50	FOS_V2713_3	60M
FP_300	1.275667	-9.933972	01° 16' 32.40" N	09° 56' 02.30" W	0.50	FOS_V2713_3	60M
FP_301	1.268371	-9.929887	01° 16' 06.14" N	09° 55' 47.59" W	0.50	FOS_V2713_3	60M
FP_302	1.261110	-9.925742	01° 15' 40.00" N	09° 55' 32.67" W	0.50	FOS_V2713_3	60M
FP_303	1.253884	-9.921537	01° 15' 13.98" N	09° 55' 17.53" W	0.50	FOS_V2713_3	60M
FP_304	1.246693	-9.917272	01° 14' 48.09" N	09° 55' 02.18" W	0.50	FOS_V2713_3	60M
FP_305	1.239538	-9.912948	01° 14' 22.34" N	09° 54' 46.61" W	0.50	FOS_V2713_3	60M
FP_306	1.232420	-9.908565	01° 13' 56.71" N	09° 54' 30.84" W	0.50	FOS_V2713_3	60M
FP_307	1.225339	-9.904124	01° 13' 31.22" N	09° 54' 14.85" W	0.50	FOS_V2713_3	60M
FP_308	1.218295	-9.899623	01° 13' 05.86" N	09° 53' 58.64" W	0.50	FOS_V2713_3	60M
FP_309	1.211289	-9.895065	01° 12' 40.64" N	09° 53' 42.23" W	0.50	FOS_V2713_3	60M
FP_310	1.204322	-9.890449	01° 12' 15.56" N	09° 53' 25.62" W	0.50	FOS_V2713_3	60M
FP_311	1.197393	-9.885775	01° 11' 50.62" N	09° 53' 08.79" W	0.50	FOS_V2713_3	60M
FP_312	1.190505	-9.881044	01° 11' 25.82" N	09° 52' 51.76" W	0.50	FOS_V2713_3	60M
FP_313	1.183656	-9.876257	01° 11' 01.16" N	09° 52' 34.52" W	0.50	FOS_V2713_3	60M
FP_314	1.176847	-9.871413	01° 10' 36.65" N	09° 52' 17.09" W	0.50	FOS_V2713_3	60M
FP_315	1.170079	-9.866512	01° 10' 12.28" N	09° 51' 59.44" W	0.50	FOS_V2713_3	60M
FP_316	1.163353	-9.861556	01° 09' 48.07" N	09° 51' 41.60" W	0.50	FOS_V2713_3	60M
FP_317	1.156668	-9.856544	01° 09' 24.00" N	09° 51' 23.56" W	0.50	FOS_V2713_3	60M
FP_318	1.150025	-9.851478	01° 09' 00.09" N	09° 51' 05.32" W	0.50	FOS_V2713_3	60M
FP_319	1.143426	-9.846356	01° 08' 36.33" N	09° 50' 46.88" W	0.50	FOS_V2713_3	60M



FIXED POINT	LATITUDE DD	LONGITUDE DD	LONGITUDE DMS	LATITUDE DMS	DISTANCE FROM PREVIOUS (M)	FOS POINT	ART. 76 METHOD
FP_320	1.136869	-9.841180	01° 08' 12.73" N	09° 50' 28.25" W	0.50	FOS_V2713_3	60M
FP_321	1.130356	-9.835950	01° 07' 49.28" N	09° 50' 09.42" W	0.50	FOS_V2713_3	60M
FP_322	1.123888	-9.830666	01° 07' 26.00" N	09° 49' 50.40" W	0.50	FOS_V2713_3	60M
FP_323	1.117463	-9.825329	01° 07' 02.87" N	09° 49' 31.18" W	0.50	FOS_V2713_3	60M
FP_324	1.111084	-9.819939	01° 06' 39.90" N	09° 49' 11.78" W	0.50	FOS_V2713_3	60M
FP_325	1.104750	-9.814496	01° 06' 17.10" N	09° 48' 52.19" W	0.50	FOS_V2713_3	60M
FP_326	1.098462	-9.809001	01° 05' 54.46" N	09° 48' 32.40" W	0.50	FOS_V2713_3	60M
FP_327	1.092220	-9.803454	01° 05' 31.99" N	09° 48' 12.43" W	0.50	FOS_V2713_3	60M
FP_328	1.086025	-9.797856	01° 05' 09.69" N	09° 47' 52.28" W	0.50	FOS_V2713_3	60M
FP_329	1.079877	-9.792207	01° 04' 47.56" N	09° 47' 31.94" W	0.50	FOS_V2713_3	60M
FP_330	1.073777	-9.786507	01° 04' 25.60" N	09° 47' 11.42" W	0.50	FOS_V2713_3	60M
FP_331	1.067725	-9.780756	01° 04' 03.81" N	09° 46' 50.72" W	0.50	FOS_V2713_3	60M
FP_332	1.061721	-9.774956	01° 03' 42.20" N	09° 46' 29.84" W	0.50	FOS_V2713_3	60M
FP_333	1.055766	-9.769106	01° 03' 20.76" N	09° 46' 08.78" W	0.50	FOS_V2713_3	60M
FP_334	1.049860	-9.763208	01° 02' 59.50" N	09° 45' 47.55" W	0.50	FOS_V2713_3	60M
FP_335	1.044004	-9.757260	01° 02' 38.41" N	09° 45' 26.14" W	0.50	FOS_V2713_3	60M
FP_336	1.038198	-9.751265	01° 02' 17.51" N	09° 45' 04.55" W	0.50	FOS_V2713_3	60M
FP_337	1.032442	-9.745221	01° 01' 56.79" N	09° 44' 42.80" W	0.50	FOS_V2713_3	60M
FP_338	1.026738	-9.739130	01° 01' 36.26" N	09° 44' 20.87" W	0.50	FOS_V2713_3	60M
FP_339	1.021084	-9.732993	01° 01' 15.90" N	09° 43' 58.77" W	0.50	FOS_V2713_3	60M
FP_340	1.015483	-9.726808	01° 00' 55.74" N	09° 43' 36.51" W	0.50	FOS_V2713_3	60M
FP_341	1.009933	-9.720578	01° 00' 35.76" N	09° 43' 14.08" W	0.50	FOS_V2713_3	60M
FP_342	1.004436	-9.714301	01° 00' 15.97" N	09° 42' 51.49" W	0.50	FOS_V2713_3	60M
FP_343	0.998991	-9.707980	00° 59' 56.37" N	09° 42' 28.73" W	0.50	FOS_V2713_3	60M
FP_344	0.993600	-9.701614	00° 59' 36.96" N	09° 42' 05.81" W	0.50	FOS_V2713_3	60M
FP_345	0.988263	-9.695203	00° 59' 17.75" N	09° 41' 42.73" W	0.50	FOS_V2713_3	60M
FP_346	0.982979	-9.688748	00° 58' 58.72" N	09° 41' 19.49" W	0.50	FOS_V2713_3	60M
FP_347	0.977749	-9.682250	00° 58' 39.90" N	09° 40' 56.10" W	0.50	FOS_V2713_3	60M
FP_348	0.972575	-9.675709	00° 58' 21.27" N	09° 40' 32.55" W	0.50	FOS_V2713_3	60M
FP_349	0.967455	-9.669125	00° 58' 02.84" N	09° 40' 08.85" W	0.50	FOS_V2713_3	60M
FP_350	0.962391	-9.662499	00° 57' 44.61" N	09° 39' 45.00" W	0.50	FOS_V2713_3	60M
FP_351	0.957382	-9.655831	00° 57' 26.58" N	09° 39' 20.99" W	0.50	FOS_V2713_3	60M
FP_352	0.952430	-9.649123	00° 57' 08.75" N	09° 38' 56.84" W	0.50	FOS_V2713_3	60M
FP_353	0.947534	-9.642373	00° 56' 51.12" N	09° 38' 32.54" W	0.50	FOS_V2713_3	60M
FP_354	0.942694	-9.635583	00° 56' 33.70" N	09° 38' 08.10" W	0.50	FOS_V2713_3	60M
FP_355	0.937912	-9.628754	00° 56' 16.48" N	09° 37' 43.51" W	0.50	FOS_V2713_3	60M
FP_356	0.933187	-9.621885	00° 55' 59.47" N	09° 37' 18.78" W	0.50	FOS_V2713_3	60M
FP_357	0.928520	-9.614977	00° 55' 42.67" N	09° 36' 53.92" W	0.50	FOS_V2713_3	60M
FP_358	0.923911	-9.608031	00° 55' 26.08" N	09° 36' 28.91" W	0.50	FOS_V2713_3	60M
FP_359	0.919361	-9.601047	00° 55' 09.70" N	09° 36' 03.77" W	0.50	FOS_V2713_3	60M



FIXED POINT	LATITUDE DD	LONGITUDE DD	LONGITUDE DMS	LATITUDE DMS	DISTANCE FROM PREVIOUS (M)	FOS POINT	ART. 76 METHOD
FP_360	0.914869	-9.594025	00° 54' 53.53" N	09° 35' 38.49" W	0.50	FOS_V2713_3	60M
FP_361	0.910436	-9.586967	00° 54' 37.57" N	09° 35' 13.08" W	0.50	FOS_V2713_3	60M
FP_362	0.906063	-9.579872	00° 54' 21.83" N	09° 34' 47.54" W	0.50	FOS_V2713_3	60M
FP_363	0.901749	-9.572741	00° 54' 06.30" N	09° 34' 21.87" W	0.50	FOS_V2713_3	60M
FP_364	0.897495	-9.565575	00° 53' 50.98" N	09° 33' 56.07" W	0.50	FOS_V2713_3	60M
FP_365	0.893302	-9.558374	00° 53' 35.89" N	09° 33' 30.14" W	0.50	FOS_V2713_3	60M
FP_366	0.889169	-9.551138	00° 53' 21.01" N	09° 33' 04.10" W	0.50	FOS_V2713_3	60M
FP_367	0.885097	-9.543868	00° 53' 06.35" N	09° 32' 37.93" W	0.50	FOS_V2713_3	60M
FP_368	0.881085	-9.536565	00° 52' 51.91" N	09° 32' 11.64" W	0.50	FOS_V2713_3	60M
FP_369	0.877136	-9.529229	00° 52' 37.69" N	09° 31' 45.23" W	0.50	FOS_V2713_3	60M
FP_370	0.873248	-9.521861	00° 52' 23.69" N	09° 31' 18.70" W	0.50	FOS_V2713_3	60M
FP_371	0.869421	-9.514461	00° 52' 09.92" N	09° 30' 52.06" W	0.50	FOS_V2713_3	60M
FP_372	0.865657	-9.507029	00° 51' 56.37" N	09° 30' 25.30" W	0.50	FOS_V2713_3	60M
FP_373	0.861956	-9.499567	00° 51' 43.04" N	09° 29' 58.44" W	0.50	FOS_V2713_3	60M
FP_374	0.858317	-9.492074	00° 51' 29.94" N	09° 29' 31.47" W	0.50	FOS_V2713_3	60M
FP_375	0.854741	-9.484551	00° 51' 17.07" N	09° 29' 04.38" W	0.50	FOS_V2713_3	60M
FP_376	0.851229	-9.476999	00° 51' 04.42" N	09° 28' 37.20" W	0.50	FOS_V2713_3	60M
FP_377	0.847779	-9.469418	00° 50' 52.01" N	09° 28' 09.90" W	0.50	FOS_V2713_3	60M
FP_378	0.844394	-9.461809	00° 50' 39.82" N	09° 27' 42.51" W	0.50	FOS_V2713_3	60M
FP_379	0.841072	-9.454172	00° 50' 27.86" N	09° 27' 15.02" W	0.50	FOS_V2713_3	60M
FP_380	0.837815	-9.446508	00° 50' 16.13" N	09° 26' 47.43" W	0.50	FOS_V2713_3	60M
FP_381	0.834622	-9.438817	00° 50' 04.64" N	09° 26' 19.74" W	0.50	FOS_V2713_3	60M
FP_382	0.831493	-9.431100	00° 49' 53.38" N	09° 25' 51.96" W	0.50	FOS_V2713_3	60M
FP_383	0.828430	-9.423357	00° 49' 42.35" N	09° 25' 24.09" W	0.50	FOS_V2713_3	60M
FP_384	0.825431	-9.415590	00° 49' 31.55" N	09° 24' 56.12" W	0.50	FOS_V2713_3	60M
FP_385	0.822498	-9.407797	00° 49' 20.99" N	09° 24' 28.07" W	0.50	FOS_V2713_3	60M
FP_386	0.819630	-9.399981	00° 49' 10.67" N	09° 23' 59.93" W	0.50	FOS_V2713_3	60M
FP_387	0.816828	-9.392142	00° 49' 00.58" N	09° 23' 31.71" W	0.50	FOS_V2713_3	60M
FP_388	0.814091	-9.384279	00° 48' 50.73" N	09° 23' 03.40" W	0.50	FOS_V2713_3	60M
FP_389	0.811421	-9.376394	00° 48' 41.11" N	09° 22' 35.02" W	0.50	FOS_V2713_3	60M
FP_390	0.808817	-9.368487	00° 48' 31.74" N	09° 22' 06.55" W	0.50	FOS_V2713_3	60M
FP_391	0.806279	-9.360559	00° 48' 22.60" N	09° 21' 38.01" W	0.50	FOS_V2713_3	60M
FP_392	0.803808	-9.352610	00° 48' 13.71" N	09° 21' 09.40" W	0.50	FOS_V2713_3	60M
FP_393	0.801403	-9.344642	00° 48' 05.05" N	09° 20' 40.71" W	0.50	FOS_V2713_3	60M
FP_394	0.799066	-9.336653	00° 47' 56.64" N	09° 20' 11.95" W	0.50	FOS_V2713_3	60M
FP_395	0.796795	-9.328645	00° 47' 48.46" N	09° 19' 43.12" W	0.50	FOS_V2713_3	60M
FP_396	0.794592	-9.320619	00° 47' 40.53" N	09° 19' 14.23" W	0.50	FOS_V2713_3	60M
FP_397	0.792456	-9.312575	00° 47' 32.84" N	09° 18' 45.27" W	0.50	FOS_V2713_3	60M
FP_398	0.790388	-9.304514	00° 47' 25.40" N	09° 18' 16.25" W	0.50	FOS_V2713_3	60M
FP_399	0.788387	-9.296435	00° 47' 18.19" N	09° 17' 47.17" W	0.50	FOS_V2713_3	60M



FIXED POINT	LATITUDE DD	LONGITUDE DD	LONGITUDE DMS	LATITUDE DMS	DISTANCE FROM PREVIOUS (M)	FOS POINT	ART. 76 METHOD
FP_400	0.786454	-9.288341	00° 47' 11.23" N	09° 17' 18.03" W	0.50	FOS_V2713_3	60M
FP_401	0.784589	-9.280231	00° 47' 04.52" N	09° 16' 48.83" W	0.50	FOS_V2713_3	60M
FP_402	0.782792	-9.272105	00° 46' 58.05" N	09° 16' 19.58" W	0.50	FOS_V2713_3	60M
FP_403	0.781064	-9.263965	00° 46' 51.83" N	09° 15' 50.27" W	0.50	FOS_V2713_3	60M
FP_404	0.779403	-9.255811	00° 46' 45.85" N	09° 15' 20.92" W	0.50	FOS_V2713_3	60M
FP_405	0.777811	-9.247644	00° 46' 40.12" N	09° 14' 51.52" W	0.50	FOS_V2713_3	60M
FP_406	0.776288	-9.239463	00° 46' 34.64" N	09° 14' 22.07" W	0.50	FOS_V2713_3	60M
FP_407	0.774833	-9.231271	00° 46' 29.40" N	09° 13' 52.57" W	0.50	FOS_V2713_3	60M
FP_408	0.773447	-9.223066	00° 46' 24.41" N	09° 13' 23.04" W	0.50	FOS_V2713_3	60M
FP_409	0.772130	-9.214851	00° 46' 19.67" N	09° 12' 53.46" W	0.50	FOS_V2713_3	60M
FP_410	0.770882	-9.206624	00° 46' 15.18" N	09° 12' 23.85" W	0.50	FOS_V2713_3	60M
FP_411	0.769703	-9.198388	00° 46' 10.93" N	09° 11' 54.20" W	0.50	FOS_V2713_3	60M
FP_412	0.768593	-9.190142	00° 46' 06.94" N	09° 11' 24.51" W	0.50	FOS_V2713_3	60M
FP_413	0.767552	-9.181888	00° 46' 03.19" N	09° 10' 54.80" W	0.50	FOS_V2713_3	60M
FP_414	0.766581	-9.173625	00° 45' 59.69" N	09° 10' 25.05" W	0.50	FOS_V2713_3	60M
FP_415	0.765678	-9.165354	00° 45' 56.44" N	09° 09' 55.27" W	0.50	FOS_V2713_3	60M
FP_416	0.764846	-9.157076	00° 45' 53.44" N	09° 09' 25.47" W	0.50	FOS_V2713_3	60M
FP_417	0.764082	-9.148792	00° 45' 50.70" N	09° 08' 55.65" W	0.50	FOS_V2713_3	60M
FP_418	0.763388	-9.140501	00° 45' 48.20" N	09° 08' 25.80" W	0.50	FOS_V2713_3	60M
FP_419	0.762764	-9.132205	00° 45' 45.95" N	09° 07' 55.94" W	0.50	FOS_V2713_3	60M
FP_420	0.762209	-9.123904	00° 45' 43.95" N	09° 07' 26.06" W	0.50	FOS_V2713_3	60M
FP_421	0.761724	-9.115599	00° 45' 42.21" N	09° 06' 56.16" W	0.50	FOS_V2713_3	60M
FP_422	0.761309	-9.107290	00° 45' 40.71" N	09° 06' 26.24" W	0.50	FOS_V2713_3	60M
FP_423	0.760963	-9.098978	00° 45' 39.47" N	09° 05' 56.32" W	0.50	FOS_V2713_3	60M
FP_424	0.760687	-9.090664	00° 45' 38.47" N	09° 05' 26.39" W	0.50	FOS_V2713_3	60M
FP_425	0.760480	-9.082347	00° 45' 37.73" N	09° 04' 56.45" W	0.50	FOS_V2713_3	60M
FP_426	0.760344	-9.074029	00° 45' 37.24" N	09° 04' 26.50" W	0.50	FOS_V2713_3	60M
FP_427	0.760277	-9.065710	00° 45' 37.00" N	09° 03' 56.56" W	0.50	FOS_V2713_3	60M
FP_428	0.760280	-9.057391	00° 45' 37.01" N	09° 03' 26.61" W	0.50	FOS_V2713_3	60M
FP_429	0.760353	-9.049072	00° 45' 37.27" N	09° 02' 56.66" W	0.50	FOS_V2713_3	60M
FP_430	0.760178	-8.605657	00° 45' 36.64" N	08° 36' 20.37" W	26.65	FOS_V2713_4	60M
FP_431	0.760247	-8.597338	00° 45' 36.89" N	08° 35' 50.42" W	0.50	FOS_V2713_4	60M
FP_432	0.760385	-8.589020	00° 45' 37.39" N	08° 35' 20.47" W	0.50	FOS_V2713_4	60M
FP_433	0.760594	-8.580704	00° 45' 38.14" N	08° 34' 50.53" W	0.50	FOS_V2713_4	60M
FP_434	0.760872	-8.572389	00° 45' 39.14" N	08° 34' 20.60" W	0.50	FOS_V2713_4	60M
FP_435	0.761219	-8.564077	00° 45' 40.39" N	08° 33' 50.68" W	0.50	FOS_V2713_4	60M
FP_436	0.761637	-8.555769	00° 45' 41.89" N	08° 33' 20.77" W	0.50	FOS_V2713_4	60M
FP_437	0.762124	-8.547464	00° 45' 43.65" N	08° 32' 50.87" W	0.50	FOS_V2713_4	60M
FP_438	0.762681	-8.539163	00° 45' 45.65" N	08° 32' 20.99" W	0.50	FOS_V2713_4	60M
FP_439	0.763307	-8.530867	00° 45' 47.90" N	08° 31' 51.12" W	0.50	FOS_V2713_4	60M



FIXED POINT	LATITUDE DD	LONGITUDE DD	LONGITUDE DMS	LATITUDE DMS	DISTANCE FROM PREVIOUS (M)	FOS POINT	ART. 76 METHOD
FP_440	0.764003	-8.522577	00° 45' 50.41" N	08° 31' 21.28" W	0.50	FOS_V2713_4	60M
FP_441	0.764768	-8.514292	00° 45' 53.17" N	08° 30' 51.45" W	0.50	FOS_V2713_4	60M
FP_442	0.765603	-8.506015	00° 45' 56.17" N	08° 30' 21.65" W	0.50	FOS_V2713_4	60M
FP_443	0.766507	-8.497744	00° 45' 59.43" N	08° 29' 51.88" W	0.50	FOS_V2713_4	60M
FP_444	0.767481	-8.489481	00° 46' 02.93" N	08° 29' 22.13" W	0.50	FOS_V2713_4	60M
FP_445	0.768523	-8.481227	00° 46' 06.68" N	08° 28' 52.42" W	0.50	FOS_V2713_4	60M
FP_446	0.769635	-8.472981	00° 46' 10.69" N	08° 28' 22.73" W	0.50	FOS_V2713_4	60M
FP_447	0.770816	-8.464745	00° 46' 14.94" N	08° 27' 53.08" W	0.50	FOS_V2713_4	60M
FP_448	0.772067	-8.456520	00° 46' 19.44" N	08° 27' 23.47" W	0.50	FOS_V2713_4	60M
FP_449	0.773386	-8.448304	00° 46' 24.19" N	08° 26' 53.90" W	0.50	FOS_V2713_4	60M
FP_450	0.871197	-7.887434	00° 52' 16.31" N	07° 53' 14.76" W	34.21	FOS_88000811	60M
FP_451	0.872786	-7.879266	00° 52' 22.03" N	07° 52' 45.36" W	0.50	FOS_88000811	60M
FP_452	0.874443	-7.871111	00° 52' 28.00" N	07° 52' 16.00" W	0.50	FOS_88000811	60M
FP_453	0.876169	-7.862971	00° 52' 34.21" N	07° 51' 46.69" W	0.50	FOS_88000811	60M
FP_454	0.877963	-7.854844	00° 52' 40.67" N	07° 51' 17.44" W	0.50	FOS_88000811	60M
FP_455	1.040805	-6.985935	01° 02' 26.90" N	06° 59' 09.37" W	53.12	N/A	200M

Table 1. List of coordinates defining the outer limits of the continental shelf of the Republic of Liberia. All coordinates use the WGS 84 geodetic reference system