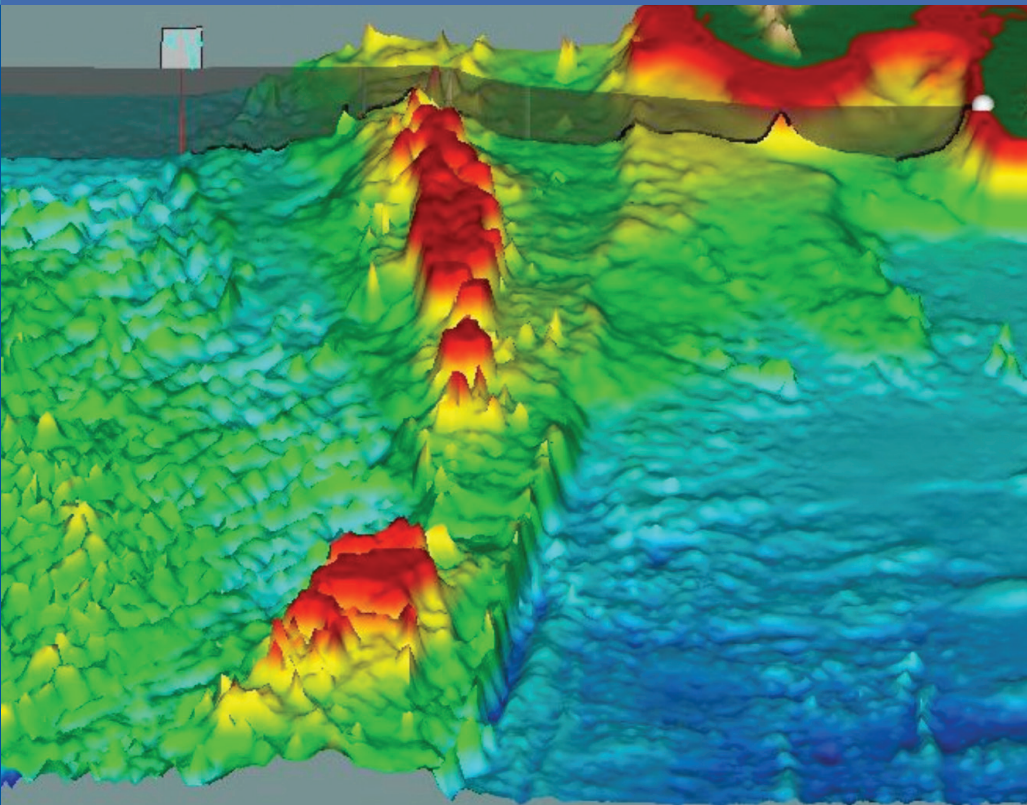


COMMISSION ON THE LIMITS
OF THE CONTINENTAL SHELF

Submission by the Republic of Maldives



EXECUTIVE SUMMARY
MAL-ES-DOC, JULY 2010



**SUBMISSION BY
THE REPUBLIC OF MALDIVES
TO THE COMMISSION ON THE LIMITS OF
THE CONTINENTAL SHELF**

EXECUTIVE SUMMARY



TABLE OF CONTENTS

List of Annexes	3
List of Maps	3
Preface	4
Introduction	6
Maps and Coordinates	8
Provisions of Article 76 Invoked	11
Advisory Assistance	12
Settled and Outstanding Delimitations	12
Regional Overview and Outer Limits of the Continental Shelf	14
Authentication	19
Notes	19
Annexes	21



LIST OF ANNEXES

Annex 1

Table listing the points defining the outer limits of the continental shelf of the Republic of Maldives (Decimal Degrees)

MAL-ES-DOC-ANNEX 1

Annex 2

Table listing the points defining the outer limits of the continental shelf of the Republic of Maldives (Degrees, Minutes and Seconds)

MAL-ES-DOC-ANNEX 2

LIST OF MAPS

Map 1

Map depicting the outer limits of the continental shelf of the Republic of Maldives indicating outer limit line and area of continental shelf beyond 200M

MAL-ES-DOC-MAP 1

Map 2

Map depicting the outer limits of the continental shelf of the Republic of Maldives indicating provisions of Article 76 invoked

MAL-ES-DOC-MAP 2



PREFACE

The Submission by the Republic of the Maldives was prepared by the Maldives Continental Shelf Committee, which composed as follows:

Senior Officials and Committee Members:

Hon. Dr. Ahmed Shaheed
Minister of Foreign Affairs

Hon. Mr Ameen Faisal
Minister of Defence and
National Security

Hon. Mr Ahmed Naseem
Minister of State
for Foreign Affairs

Dr. Mohamed Munnavaru
(Chairman 2009-2010)
Former Attorney-General

**Brigadier General Zakariyya
Mansoor**
(Vice-Chairman)
Coast Guard Commandant

Major Mohamed Ibrahim
Director,
Coast Guard of Maldives

Ms. Hawla Ahmed Didi
Deputy Minister
for Foreign Affairs

Ms. Liusha Zahir
Assistant Under-Secretary,
Ministry of Foreign Affairs

Ms Fathimath Inaya
Assistant Under-Secretary
Ministry of Foreign Affairs

Ur. Abdulla Muiz
Deputy Attorney-General

Mr Abdun Nasir Mohamed
Deputy Director-General,
Ministry of Housing, Transport and
Environment

Dr. Mohamed Shiham Adam
Director-General,
Marine Research Section,
Ministry of Fisheries and Agriculture

Dr. Abdulla Naseer
Permanent Secretary,
Ministry of Fisheries and Agriculture

Lieutenant Ahmed Ibrahim
Assistant Director,
Directorate of International Defence
Cooperation,
Ministry of Defence and National
Security

Lieutenant Ahmed Mujuthaba
Operations Officer, Coast Guard

Mr Yamane Adam Zahir
Assistant Director (former),
Ministry of Foreign Affairs



The following advisors and experts provided legal and technical advice and assistance to the Republic of Maldives during the preparation of the Submission:

Mr Joshua Brien
Legal Adviser
Programme Leader
(Maritime Boundaries)
Commonwealth Secretariat
London, United Kingdom

Professor André W. Droxler
Professor of Earth Science
Rice University,
Texas, United States

Dr Alain Murphy
GeoLimits Consulting
Nova Scotia, Canada



1. INTRODUCTION

- 1-1 This Executive Summary forms part of the Submission by the Republic of Maldives to the Commission on the Limits of the Continental Shelf ('the Commission') made pursuant to paragraph 8 of Article 76 of the 1982 United Nations Convention on the Law of the Sea ('the Convention').
- 1-2 The Republic of Maldives is a sovereign, independent, democratic nation based on the principles of Islam. Located in the equatorial region of the Indian Ocean, the Maldives Archipelago is clearly visible from space and appears today as a series of 800 km long north-south oriented strings of more than 1200 atolls extending between 74°E and 72° 30'E and 7° 10'N and 0° 45'S respectively.
- 1-3 The Republic of Maldives became a Contracting Party to the Convention on 7 September 2000, following the lodgement of a formal instrument declaring consent to be bound by the Convention. The various maritime zones of the Republic of Maldives have been duly established under the *Maritime Zones of Maldives Act No.6 of 1996* ('Maritime Zones Act').
- 1-4 The archipelagic status of the Republic of Maldives is expressly declared in section 2 of the *Constitution of the Republic of Maldives 2008*, with archipelagic baselines and waters subsequently established under section 3 of the *Maritime Zones Act*. The coordinates of the Archipelagic baselines have been duly established and publicised in accordance with Article 47 of the Convention (see: *Law of the Sea Bulletin 1999 (No.41)*).



- 1-5 The present Submission is made in support of the establishment of the outer limits of the continental shelf where it extends beyond 200 nautical miles (M) from the archipelagic baselines of the Republic of Maldives.**
- 1-6 As provided for under paragraph 1 of Article 76, the Republic of Maldives has a continental shelf comprising the seabed and subsoil of the submarine areas that extend beyond its territorial sea throughout the natural prolongation of its land territory to the outer edge of the continental margin, up to the limits provided for in paragraphs 4 to 6 of Article 76 or, to a distance of 200 M from the baselines from which the breadth of the territorial sea is measured where the outer edge of the continental margin does not extend beyond that distance.**
- 1-7 In the case of Archipelagic States such as the Republic of Maldives, archipelagic baselines determined in accordance with Article 47 of the Convention may be relied upon for the purposes of determining the outer limits of the continental shelf in accordance with Article 76 of the Convention. As noted above, the Republic of Maldives has established archipelagic baselines in accordance with the Convention.**
- 1-8 The Republic of Maldives has for the purposes of preparing this Submission, applied the relevant provisions of Article 76 of the Convention, together with the *Rules of Procedure of the Commission on the Limits of the Continental Shelf* (CLCS/40/Rev.1), adopted by the Commission on 17 April 2008 ('Rules of Procedure'), and the recommendations contained in the *Scientific and Technical Guidelines of***



the Commission on the Limits of the Continental Shelf (CLCS/11) adopted by the Commission on 13 May 1999 ('the Guidelines').

1-9 In accordance with Article 1 of Annex III to the Rules of Procedure and paragraphs 9.1.3 to 9.1.6 of the Guidelines, the Submission consists of three parts comprising:

- **this Executive Summary (MAL-ES-DOC);**
- **the Main Body of the Submission (MAL-MB-DOC); and,**
- **Supporting scientific and technical data (MAL-SD).**

A separate section of this Executive Summary provides a brief outline of the region of continental shelf beyond 200M, including a depiction of the outer limits of the continental shelf determined by the Republic of Maldives.

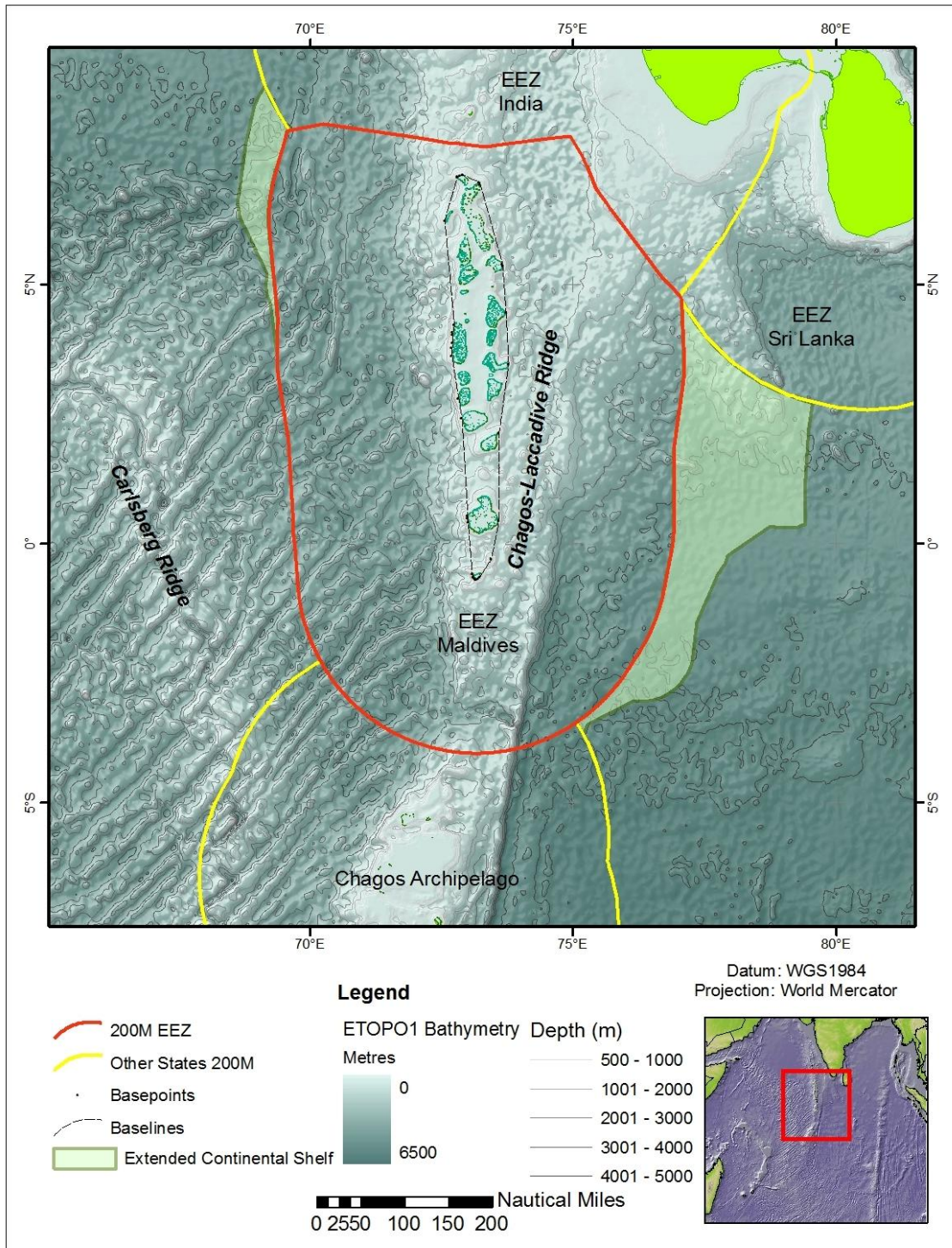
2. MAPS AND COORDINATES

2-1 Two maps at an appropriate scale are included in this Executive Summary and have been duly supplied as separate A0-size maps. Map 1 (MAL-ES-DOC-MAP 1) depicts the outer limits of the continental shelf of the Republic of Maldives showing the outer limit line and area of continental shelf extending beyond 200M from the territorial sea baseline. Map 2 (MAL-ES-DOC-MAP 2) depicts the outer limits of the continental shelf of the Republic of Maldives and provisions of Article 76 invoked.



2-2 Lists of coordinates of the Article 76 fixed points that define the outer limits of the continental shelf are supplied in two tables annexed to this Executive Summary. Table 1 (MAL-ES-DOC-ANNEX 1) lists the fixed points defining the outer limits of Republic of Maldives continental shelf in decimal degrees. Table 2 (MAL-ES-DOC-ANNEX 2) lists the same points in degrees, minutes and seconds. The provision of Article 76 invoked to support the establishment of each fixed point is indicated in both tables, together with the distance between adjacent points.

2-3 In the event of any discrepancy between the two formats of the coordinates for a particular fixed point, the Republic of Maldives relies upon the coordinates farthest seaward from its baseline, subject to compliance with the requirements of the relevant provisions of Article 76 of the Convention.



Map 1. The outer limits of the continental shelf of the Republic of Maldives showing the outer limit line and area of continental shelf extending beyond 200M from the territorial sea baseline.



3. PROVISIONS OF ARTICLE 76 INVOKED

- 3-1 Paragraphs 4 to 6 of Article 76 set out specific formula and constraints by which a coastal State such as the Republic of Maldives may establish the outer edge of its continental margin, and its legal continental shelf, wherever that margin extends beyond 200 M from the baselines from which the breadth of the territorial sea is measured.**
- 3-2 As noted above, in the case of Archipelagic States such as the Republic of Maldives, archipelagic baselines established in accordance with the Convention may be relied upon by the coastal State for the specific application of the formula and constraints set out in Article 76.**
- 3-3 As set out in paragraph 7 of Article 76, the coastal State is to delineate the outer limits of those portions of its continental shelf that extend beyond 200 M from the baselines by straight lines not exceeding 60 M in length, connecting fixed points defined by coordinates of latitude and longitude.**
- 3-4 The Republic of Maldives invokes paragraphs 3, 4(a)(ii), 5 and 7 of Article 76 of the Convention in support of the determination of the outer limits of the continental shelf included in the Submission, as outlined in Section 6 of this Executive Summary.**



4. ADVISORY ASSISTANCE

- 4-1 The Republic of Maldives was not assisted in the preparation of the Submission by any serving member of the Commission.**
- 4-2 A list of advisers and organisations that provided legal and technical assistance to the Republic of Maldives during the preparation of the Submission is included in the Preface to this Executive Summary.**

5. SETTLED AND OUTSTANDING DELIMITATIONS

- 5-1 Consistent with paragraph 2(a) of Annex I to the Rules of Procedure, the Republic of Maldives advises that the area of extended continental shelf contained in the Submission is not the subject of any dispute between it and any other coastal State(s).**
- 5-2 Furthermore, in the view of the Republic of Maldives, the consideration of the present Submission will not prejudice matters relating to the delimitation of maritime boundaries with any adjacent and opposite coastal States.**
- 5-3 The Republic of Maldives has concluded a number of agreements with adjacent and opposite coastal States that establish agreed maritime boundaries in the region. This includes a maritime boundary established by the Republic of Maldives and the Republic of India ('India') under the *Agreement between India and Maldives on Maritime Boundary in The Arabian Sea and Related Matters*, concluded on 28 December 1976 (see:**



Limits in the Seas, No. 78 available online at <http://www.state.gov/documents/organization/59587.pdf>).

- 5-4 In addition, the tri-point of a maritime boundary between the Republic of Maldives, India and the Democratic Socialist Republic of Sri Lanka ('Sri Lanka') in the Gulf of Mannar has been established under the *Agreement between Sri Lanka, India and Maldives concerning the determination of the trijunction point between the three countries in the Gulf of Mannar*, concluded on 23, 24 and 31 July 1976 (see: [http://www.un.org/Depts/los/LEGISLATION ANDTREATIES/PDFFILES/TREATIES/LKA-IND-MDV1976 TP.PDF](http://www.un.org/Depts/los/LEGISLATION_ANDTREATIES/PDFFILES/TREATIES/LKA-IND-MDV1976_TP.PDF)).
- 5-5 The Republic of Maldives notes also that the area of continental shelf included in the Submission may be affected by a potential delimitation with Sri Lanka where the continental shelf determined by the Republic of Maldives overlaps with small portions of the area that forms part of the *Submission made in accordance with the Statement of Understanding adopted by the Third United Nations Conference on the Law of the Sea, on 29 August 1980, contained in Annex II to the Final Act of the Conference, and under paragraph 8 of article 76 of the United Nations Convention on the Law of the Sea and article 3 of Annex II to the Convention*, lodged by the Sri Lanka on 8 May 2009.
- 5-6 On 4 August 2009, the Republic of Maldives lodged with the Secretary-General of the United Nations a *Note Verbale* (Ref: G3 UN-A/2009/2) stating its intention to formally reserve the right to comment upon the Submission made by Sri Lanka.



5-7 Further to that notification, the Republic of Maldives declares pursuant to paragraph 4(a) of Annex I that the present Submission is made without prejudice to any potential delimitation with Sri Lanka that may be required following the examination and publication by the Commission of recommendations concerning the present Submission and the Submission made by Sri Lanka.

6. REGIONAL OVERVIEW AND OUTER LIMITS OF THE CONTINENTAL SHELF

6-1 The Republic of Maldives lies in the northern Indian Ocean to the south of the western continental margin of India. The continental shelf of the Republic of Maldives has been defined primarily based on morphology and comprises the *Chagos-Laccadive Ridge*, the adjacent *Laccadive Basin* and the *Comorin Ridge*. These features are in morphological physical juxtaposition and represent the submerged prolongation of the land territory of the Republic of Maldives.

6-2 The Indian Ocean displays a history of multi-phase sea-floor spreading and evolving plate boundary geometries. In this regard, all of the features that comprise the continental shelf of the Republic of Maldives morphologically share a geological history related to the continental breakup of Gondwanaland, and the interaction of a series of hotspots or mantle plumes, including the development of the Deccan-Réunion Hotspot.



- 6-3 The natural prolongation of the continental shelf of the Republic of Maldives is predicated on an extension of the submerged prolongation of the island landmass of the atolls that together form the land territory of the Republic, with the submerged prolongation of three atolls (*Miladhunmadulu, Malé and Ihavand-hoppolhu*) specifically demonstrated in the Main Body of the Submission.**
- 6-4 A detailed examination of the geology of the region is presented in the Main Body of the Submission, which includes a discussion that is intended to demonstrate clearly the natural prolongation from the relevant landmass.**
- 6-5 The scientific and technical data submitted by the Republic of Maldives in support of this Submission establishes that the outer edge of the continental margin extends beyond 200 M measured from the archipelagic baselines. The continental shelf is divided into two areas, which are referred to in this Executive Summary document and throughout the Submission as 'the Western Area' and, 'the Eastern Area' respectively.**
- 6-6 Applying the relevant provisions of Article 76, a total of 297 fixed points have been established by the Republic of Maldives to determine the outer limits of the continental shelf. These fixed points have been determined by applying the Hedberg Formula (Article 76, paragraph 4(a)(ii)), together with the 350M distance constraint (Article 76, paragraph 5), as summarised below:**



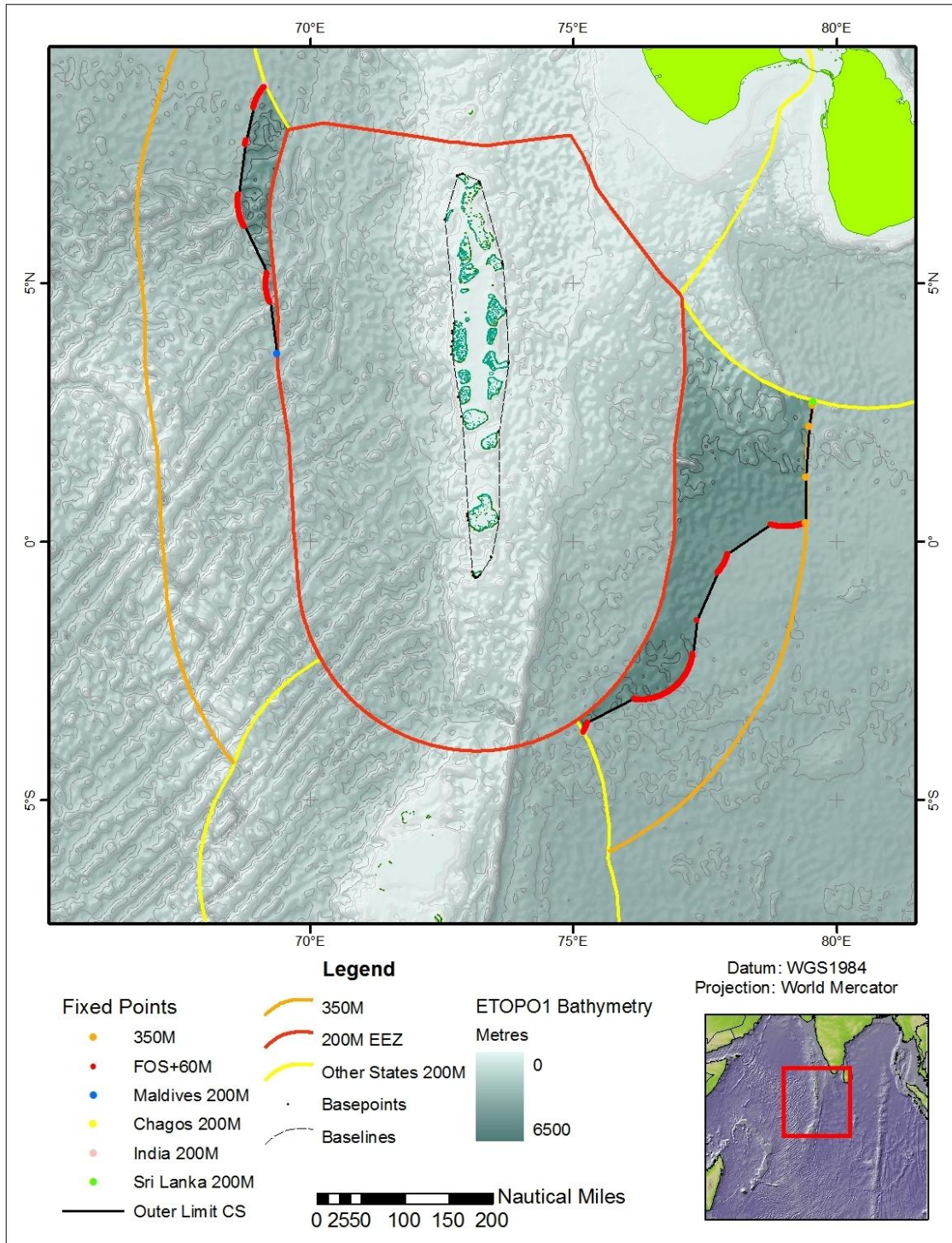
- **286 are defined by arcs 60 M from the foot of the slope (Article 76, paragraph 4(a)(ii));**
- **7 are defined by the constraint line 350 M from the archipelagic baselines (Article 76, paragraph 5);**
- **2 are points where the outer limit line of the continental shelf in the Eastern Area commences at a point located along a 200 M line constructed from the Chagos Archipelago (Mal_ECS_FP1) and terminates at a point along the line constructed 200M from Democratic Socialist Republic of Sri Lanka (Mal_ECS_FP186).**
- **1 is a point (Mal_ECS_FP297) in the Western Area where the outer limit line joins with the line 200M from the archipelagic baselines of the Republic of Maldives.**
- **1 is a point (Mal_ECS_FP187) in the Western Area where the outer limit line intersects the line 200M from the territorial sea baseline of the Republic of India.**

6-7 The outer limits of the continental shelf extending beyond 200 M of the territorial sea baseline has been delineated by geodesic straight lines not exceeding 60 M in length used to connect the fixed points ('Article 76 fixed points'), defined by coordinates of latitude and longitude.

6-8 The outer limits of the continental shelf of the Republic of Maldives extending beyond 200 M from the baseline from which the breadth of the territorial sea is measured encloses an area of approximately 165,966 km². The Eastern Area comprises approximately 142,055 km², whilst the Western Area comprises approximately 23,912 km².



6-9 Lists of the fixed points that have been constructed to delineate the outer limits of the continental shelf are given in the annexes to this Executive Summary.



Map 2. The outer limits of the continental shelf of the Republic of Maldives and provisions of Article 76 invoked.



7. AUTHENTICATION

7-1 All maps, charts and databases forming part of the Republic of Maldives submission were prepared by the Department of National Planning, which is responsible for preparing such material and for certifying its quality and reliability.

8. NOTES

MAP NOTES

- 8-1 For the purpose of the maps contained in this Submission, the exclusive economic zone entitlement of the Republic of Maldives has been depicted in accordance with, and subject to, the provisions of the Maritime Zones Act and any applicable maritime boundary treaty concluded by the Republic of Maldives.**
- 8-2 The depiction of 200 M lines other than those established by the Republic of Maldives is for the sole purpose of demonstrating the location of those fixed points at which the outer limit line delineating the outer limits of the continental shelf commences and terminates respectively. The construction of such 200M lines is based on information available at the time of production, and should not be taken to signify acceptance of the validity at international law of base-points, maritime zones or waters determined by another coastal State, with the exception of those cases where maritime boundary lines, coordinates or**



boundaries have been agreed in a maritime boundary treaty or agreement concluded between the Republic of Maldives and an opposite or adjacent coastal State.

TABLE NOTES

- 8-2 The tables included at Annex 1 and Annex 2 to this Executive Summary list by number (identifiers) and coordinates (in latitude and longitude) the fixed points that define the outer limits of the continental shelf of the Republic of Maldives. The distance in nautical miles (M) from one point on the outer limit line to the next is given in the fourth column of the table.**
- 8-3 All coordinates of fixed points defined according to the provisions of Article 76 of the Convention are expressed in this document in the WGS84 geodetic reference system.**

ABBREVIATIONS

- 8-4 The following abbreviations are used in the tables included at Annex 1 and Annex 2 to denote the Article 76 provisions invoked:**

200 M 200 M line from the territorial sea baseline (Article 76, para. 1)
60 M 60 M formula point (Article 76, para. 4(a)(ii))
350 M 350 M Constraint point (Article 76, para. 5).

Other abbreviations used:

M nautical mile (1852m)



ANNEX 1

MAL-ES-DOC-ANNEX 1

Table listing the points defining the outer limits of the Republic of Maldives extended continental shelf (Decimal Degrees)

Eastern Area				
Fixed Point	Longitude	Latitude	Distance to last Fixed Point	Method
Mal_ECS_FP1	75.1925583	-3.6949456	0.00	BIOT 200M
Mal_ECS_FP2	75.1932297	-3.6937435	0.08	FOS + 60M
Mal_ECS_FP3	75.2011261	-3.6789930	1.00	FOS + 60M
Mal_ECS_FP4	75.2087784	-3.6641130	1.00	FOS + 60M
Mal_ECS_FP5	75.2161789	-3.6491067	1.00	FOS + 60M
Mal_ECS_FP6	75.2233276	-3.6339786	1.00	FOS + 60M
Mal_ECS_FP7	75.2302322	-3.6187329	1.00	FOS + 60M
Mal_ECS_FP8	75.2368774	-3.6033735	1.00	FOS + 60M
Mal_ECS_FP9	75.2432632	-3.5879047	1.00	FOS + 60M
Mal_ECS_FP10	75.2493973	-3.5723307	1.00	FOS + 60M
Mal_ECS_FP11	75.2552643	-3.5566571	1.00	FOS + 60M
Mal_ECS_FP12	75.2608795	-3.5408866	1.00	FOS + 60M
Mal_ECS_FP13	75.2662277	-3.5250247	1.00	FOS + 60M
Mal_ECS_FP14	75.2713089	-3.5090733	1.00	FOS + 60M
Mal_ECS_FP15	76.1556473	-3.0554698	59.58	FOS + 60M
Mal_ECS_FP16	76.1721878	-3.0575006	1.00	FOS + 60M
Mal_ECS_FP17	76.1887589	-3.0592537	1.00	FOS + 60M
Mal_ECS_FP18	76.2053528	-3.0607283	1.00	FOS + 60M
Mal_ECS_FP19	76.2219696	-3.0619247	1.00	FOS + 60M
Mal_ECS_FP20	76.2386093	-3.0628424	1.00	FOS + 60M
Mal_ECS_FP21	76.2552567	-3.0634809	1.00	FOS + 60M
Mal_ECS_FP22	76.2719116	-3.0638399	1.00	FOS + 60M
Mal_ECS_FP23	76.2885742	-3.0639198	1.00	FOS + 60M
Mal_ECS_FP24	76.3052368	-3.0637202	1.00	FOS + 60M
Mal_ECS_FP25	76.3218918	-3.0632412	1.00	FOS + 60M
Mal_ECS_FP26	76.3385391	-3.0624828	1.00	FOS + 60M
Mal_ECS_FP27	76.3551636	-3.0614460	1.00	FOS + 60M
Mal_ECS_FP28	76.3717728	-3.0601301	1.00	FOS + 60M
Mal_ECS_FP29	76.3883591	-3.0585358	1.00	FOS + 60M



Mal_ECS_FP30	76.4049149	-3.0566640	1.00	FOS + 60M
Mal_ECS_FP31	76.4214401	-3.0545144	1.00	FOS + 60M
Mal_ECS_FP32	76.4379196	-3.0520887	1.00	FOS + 60M
Mal_ECS_FP33	76.4543610	-3.0493872	1.00	FOS + 60M
Mal_ECS_FP34	76.4707565	-3.0464091	1.00	FOS + 60M
Mal_ECS_FP35	76.4870987	-3.0431576	1.00	FOS + 60M
Mal_ECS_FP36	76.5033875	-3.0396318	1.00	FOS + 60M
Mal_ECS_FP37	76.5196152	-3.0358346	1.00	FOS + 60M
Mal_ECS_FP38	76.5357742	-3.0317643	1.00	FOS + 60M
Mal_ECS_FP39	76.5518646	-3.0274236	1.00	FOS + 60M
Mal_ECS_FP40	76.5678864	-3.0228148	1.00	FOS + 60M
Mal_ECS_FP41	76.5838242	-3.0179367	1.00	FOS + 60M
Mal_ECS_FP42	76.5996780	-3.0127935	1.00	FOS + 60M
Mal_ECS_FP43	76.6154480	-3.0073841	1.00	FOS + 60M
Mal_ECS_FP44	76.6311188	-3.0017116	1.00	FOS + 60M
Mal_ECS_FP45	76.6466980	-2.9957776	1.00	FOS + 60M
Mal_ECS_FP46	76.6621780	-2.9895828	1.00	FOS + 60M
Mal_ECS_FP47	76.6775436	-2.9831300	1.00	FOS + 60M
Mal_ECS_FP48	76.6928101	-2.9764192	1.00	FOS + 60M
Mal_ECS_FP49	76.7079620	-2.9694538	1.00	FOS + 60M
Mal_ECS_FP50	76.7229919	-2.9622340	1.00	FOS + 60M
Mal_ECS_FP51	76.7379074	-2.9547637	1.00	FOS + 60M
Mal_ECS_FP52	76.7526932	-2.9470439	1.00	FOS + 60M
Mal_ECS_FP53	76.7673492	-2.9390771	1.00	FOS + 60M
Mal_ECS_FP54	76.7818680	-2.9308674	1.00	FOS + 60M
Mal_ECS_FP55	76.7962494	-2.9224169	1.00	FOS + 60M
Mal_ECS_FP56	76.8104858	-2.9137228	1.00	FOS + 60M
Mal_ECS_FP57	76.8245850	-2.9047925	1.00	FOS + 60M
Mal_ECS_FP58	76.8385239	-2.8956287	1.00	FOS + 60M
Mal_ECS_FP59	76.8523102	-2.8862312	1.00	FOS + 60M
Mal_ECS_FP60	76.8659439	-2.8766036	1.00	FOS + 60M
Mal_ECS_FP61	76.8794174	-2.8667476	1.00	FOS + 60M
Mal_ECS_FP62	76.8927155	-2.8566678	1.00	FOS + 60M
Mal_ECS_FP63	76.9058533	-2.8463650	1.00	FOS + 60M
Mal_ECS_FP64	76.9188156	-2.8358457	1.00	FOS + 60M
Mal_ECS_FP65	76.9316025	-2.8251083	1.00	FOS + 60M
Mal_ECS_FP66	76.9442062	-2.8141606	1.00	FOS + 60M
Mal_ECS_FP67	76.9566345	-2.8030005	1.00	FOS + 60M
Mal_ECS_FP68	76.9688644	-2.7916355	1.00	FOS + 60M
Mal_ECS_FP69	76.9809113	-2.7800677	1.00	FOS + 60M
Mal_ECS_FP70	76.9927597	-2.7682996	1.00	FOS + 60M
Mal_ECS_FP71	77.0044174	-2.7563326	1.00	FOS + 60M
Mal_ECS_FP72	77.0158691	-2.7441735	1.00	FOS + 60M
Mal_ECS_FP73	77.0271225	-2.7318218	1.00	FOS + 60M
Mal_ECS_FP74	77.0381622	-2.7192857	1.00	FOS + 60M
Mal_ECS_FP75	77.0489960	-2.7065644	1.00	FOS + 60M
Mal_ECS_FP76	77.0596237	-2.6936646	1.00	FOS + 60M



Mal_ECS_FP77	77.0700302	-2.6805871	1.00	FOS + 60M
Mal_ECS_FP78	77.0802155	-2.6673367	1.00	FOS + 60M
Mal_ECS_FP79	77.0901871	-2.6539164	1.00	FOS + 60M
Mal_ECS_FP80	77.0999298	-2.6403313	1.00	FOS + 60M
Mal_ECS_FP81	77.1094437	-2.6265862	1.00	FOS + 60M
Mal_ECS_FP82	77.1187286	-2.6126847	1.00	FOS + 60M
Mal_ECS_FP83	77.1277847	-2.5986264	1.00	FOS + 60M
Mal_ECS_FP84	77.1366119	-2.5844195	1.00	FOS + 60M
Mal_ECS_FP85	77.1451950	-2.5700674	1.00	FOS + 60M
Mal_ECS_FP86	77.1535339	-2.5555735	1.00	FOS + 60M
Mal_ECS_FP87	77.1616440	-2.5409400	1.00	FOS + 60M
Mal_ECS_FP88	77.1695023	-2.5261748	1.00	FOS + 60M
Mal_ECS_FP89	77.1771088	-2.5112798	1.00	FOS + 60M
Mal_ECS_FP90	77.1844788	-2.4962585	1.00	FOS + 60M
Mal_ECS_FP91	77.1915894	-2.4811161	1.00	FOS + 60M
Mal_ECS_FP92	77.1984558	-2.4658558	1.00	FOS + 60M
Mal_ECS_FP93	77.2050629	-2.4504821	1.00	FOS + 60M
Mal_ECS_FP94	77.2114182	-2.4350014	1.00	FOS + 60M
Mal_ECS_FP95	77.2175140	-2.4194143	1.00	FOS + 60M
Mal_ECS_FP96	77.2233505	-2.4037280	1.00	FOS + 60M
Mal_ECS_FP97	77.2289276	-2.3879461	1.00	FOS + 60M
Mal_ECS_FP98	77.2342453	-2.3720737	1.00	FOS + 60M
Mal_ECS_FP99	77.2392960	-2.3561132	1.00	FOS + 60M
Mal_ECS_FP100	77.2440796	-2.3400695	1.00	FOS + 60M
Mal_ECS_FP101	77.2485962	-2.3239479	1.00	FOS + 60M
Mal_ECS_FP102	77.2528458	-2.3077533	1.00	FOS + 60M
Mal_ECS_FP103	77.2568283	-2.2914894	1.00	FOS + 60M
Mal_ECS_FP104	77.2605438	-2.2751610	1.00	FOS + 60M
Mal_ECS_FP105	77.2639771	-2.2587729	1.00	FOS + 60M
Mal_ECS_FP106	77.2671509	-2.2423294	1.00	FOS + 60M
Mal_ECS_FP107	77.2700424	-2.2258351	1.00	FOS + 60M
Mal_ECS_FP108	77.2726669	-2.2092950	1.00	FOS + 60M
Mal_ECS_FP109	77.2750168	-2.1927128	1.00	FOS + 60M
Mal_ECS_FP110	77.2770844	-2.1760936	1.00	FOS + 60M
Mal_ECS_FP111	77.3545837	-1.5225347	39.30	FOS + 60M
Mal_ECS_FP112	77.7465668	-0.6109830	59.30	FOS + 60M
Mal_ECS_FP113	77.7570877	-0.5980055	1.00	FOS + 60M
Mal_ECS_FP114	77.7673950	-0.5848526	1.00	FOS + 60M
Mal_ECS_FP115	77.7774811	-0.5715296	1.00	FOS + 60M
Mal_ECS_FP116	77.7873383	-0.5580382	1.00	FOS + 60M
Mal_ECS_FP117	77.7969818	-0.5443848	1.00	FOS + 60M
Mal_ECS_FP118	77.8063889	-0.5305725	1.00	FOS + 60M
Mal_ECS_FP119	77.8155670	-0.5166037	1.00	FOS + 60M
Mal_ECS_FP120	77.8245163	-0.5024823	1.00	FOS + 60M
Mal_ECS_FP121	77.8332291	-0.4882127	1.00	FOS + 60M
Mal_ECS_FP122	77.8417053	-0.4737987	1.00	FOS + 60M
Mal_ECS_FP123	77.8499374	-0.4592439	1.00	FOS + 60M



Mal_ECS_FP124	77.8579330	-0.4445528	1.00	FOS + 60M
Mal_ECS_FP125	77.8656769	-0.4297295	1.00	FOS + 60M
Mal_ECS_FP126	77.8731842	-0.4147797	1.00	FOS + 60M
Mal_ECS_FP127	77.8804321	-0.3997045	1.00	FOS + 60M
Mal_ECS_FP128	77.8874359	-0.3845116	1.00	FOS + 60M
Mal_ECS_FP129	77.8941879	-0.3692031	1.00	FOS + 60M
Mal_ECS_FP130	77.9006805	-0.3537842	1.00	FOS + 60M
Mal_ECS_FP131	77.9069214	-0.3382573	1.00	FOS + 60M
Mal_ECS_FP132	77.9129028	-0.3226269	1.00	FOS + 60M
Mal_ECS_FP133	77.9186325	-0.3068990	1.00	FOS + 60M
Mal_ECS_FP134	77.9240875	-0.2910769	1.00	FOS + 60M
Mal_ECS_FP135	77.9292908	-0.2751661	1.00	FOS + 60M
Mal_ECS_FP136	77.9342270	-0.2591695	1.00	FOS + 60M
Mal_ECS_FP137	77.9388885	-0.2430939	1.00	FOS + 60M
Mal_ECS_FP138	78.7466507	0.3301568	59.40	FOS + 60M
Mal_ECS_FP139	78.7626343	0.3255112	1.00	FOS + 60M
Mal_ECS_FP140	78.7786942	0.3211345	1.00	FOS + 60M
Mal_ECS_FP141	78.7948227	0.3170263	1.00	FOS + 60M
Mal_ECS_FP142	78.8110275	0.3131895	1.00	FOS + 60M
Mal_ECS_FP143	78.8272858	0.3096250	1.00	FOS + 60M
Mal_ECS_FP144	78.8435974	0.3063349	1.00	FOS + 60M
Mal_ECS_FP145	78.8599625	0.3033179	1.00	FOS + 60M
Mal_ECS_FP146	78.8763733	0.3005768	1.00	FOS + 60M
Mal_ECS_FP147	78.8928299	0.2981107	1.00	FOS + 60M
Mal_ECS_FP148	78.9093246	0.2959211	1.00	FOS + 60M
Mal_ECS_FP149	78.9258499	0.2940089	1.00	FOS + 60M
Mal_ECS_FP150	78.9424057	0.2923741	1.00	FOS + 60M
Mal_ECS_FP151	78.9589920	0.2910166	1.00	FOS + 60M
Mal_ECS_FP152	78.9755936	0.2899379	1.00	FOS + 60M
Mal_ECS_FP153	78.9922104	0.2891379	1.00	FOS + 60M
Mal_ECS_FP154	79.0088425	0.2886166	1.00	FOS + 60M
Mal_ECS_FP155	79.0254745	0.2883745	1.00	FOS + 60M
Mal_ECS_FP156	79.0421143	0.2884114	1.00	FOS + 60M
Mal_ECS_FP157	79.0587463	0.2887274	1.00	FOS + 60M
Mal_ECS_FP158	79.0753708	0.2893223	1.00	FOS + 60M
Mal_ECS_FP159	79.0919876	0.2901962	1.00	FOS + 60M
Mal_ECS_FP160	79.1085815	0.2913483	1.00	FOS + 60M
Mal_ECS_FP161	79.1251602	0.2927792	1.00	FOS + 60M
Mal_ECS_FP162	79.1417084	0.2944873	1.00	FOS + 60M
Mal_ECS_FP163	79.1582260	0.2964731	1.00	FOS + 60M
Mal_ECS_FP164	79.1747131	0.2987360	1.00	FOS + 60M
Mal_ECS_FP165	79.1911545	0.3012745	1.00	FOS + 60M
Mal_ECS_FP166	79.2075577	0.3040894	1.00	FOS + 60M
Mal_ECS_FP167	79.2239075	0.3071779	1.00	FOS + 60M
Mal_ECS_FP168	79.2402039	0.3105409	1.00	FOS + 60M
Mal_ECS_FP169	79.2564468	0.3141769	1.00	FOS + 60M
Mal_ECS_FP170	79.2726288	0.3180844	1.00	FOS + 60M



Mal_ECS_FP171	79.2887421	0.3222638	1.00	FOS + 60M
Mal_ECS_FP172	79.3047791	0.3267125	1.00	FOS + 60M
Mal_ECS_FP173	79.3207474	0.3314297	1.00	FOS + 60M
Mal_ECS_FP174	79.3366318	0.3364136	1.00	FOS + 60M
Mal_ECS_FP175	79.3524246	0.3416635	1.00	FOS + 60M
Mal_ECS_FP176	79.3681412	0.3471780	1.00	FOS + 60M
Mal_ECS_FP177	79.3837585	0.3529551	1.00	FOS + 60M
Mal_ECS_FP178	79.3992691	0.3589920	1.00	FOS + 60M
Mal_ECS_FP179	79.4087372	0.3628587	0.61	350M Constraint
Mal_ECS_FP180	79.4114380	1.2446117	52.65	350M Constraint
Mal_ECS_FP181	79.4856644	2.2276731	58.86	350M Constraint
Mal_ECS_FP182	79.5447388	2.6421549	25.00	350M Constraint
Mal_ECS_FP183	79.5470734	2.6587381	1.00	350M Constraint
Mal_ECS_FP184	79.5493622	2.6753278	1.00	350M Constraint
Mal_ECS_FP185	79.5516052	2.6919241	1.00	350M Constraint
Mal_ECS_FP186	79.5537720	2.7082772	0.99	Sri Lanka 200M



Western Area				
Fixed Point	Longitude	Latitude	Distance to last Fixed Point	Method
Mal_ECS_FP187	69.1411209	8.8060055	0.00	India 200M
Mal_ECS_FP188	69.1214066	8.7823973	1.83	FOS + 60M
Mal_ECS_FP189	69.1109695	8.7692614	1.00	FOS + 60M
Mal_ECS_FP190	69.1007538	8.7559519	1.00	FOS + 60M
Mal_ECS_FP191	69.0907593	8.7424746	1.00	FOS + 60M
Mal_ECS_FP192	69.0810013	8.7288351	1.00	FOS + 60M
Mal_ECS_FP193	69.0714645	8.7150326	1.00	FOS + 60M
Mal_ECS_FP194	69.0621719	8.7010756	1.00	FOS + 60M
Mal_ECS_FP195	69.0531082	8.6869659	1.00	FOS + 60M
Mal_ECS_FP196	69.0442810	8.6727085	1.00	FOS + 60M
Mal_ECS_FP197	69.0356979	8.6583061	1.00	FOS + 60M
Mal_ECS_FP198	69.0273514	8.6437645	1.00	FOS + 60M
Mal_ECS_FP199	69.0192566	8.6290846	1.00	FOS + 60M
Mal_ECS_FP200	69.0114136	8.6142721	1.00	FOS + 60M
Mal_ECS_FP201	69.0038147	8.5993309	1.00	FOS + 60M
Mal_ECS_FP202	68.9964600	8.5842657	1.00	FOS + 60M
Mal_ECS_FP203	68.9893723	8.5690804	1.00	FOS + 60M
Mal_ECS_FP204	68.9825363	8.5537806	1.00	FOS + 60M
Mal_ECS_FP205	68.9759521	8.5383701	1.00	FOS + 60M
Mal_ECS_FP206	68.9696350	8.5228510	1.00	FOS + 60M
Mal_ECS_FP207	68.9635696	8.5072289	1.00	FOS + 60M
Mal_ECS_FP208	68.9577789	8.4915075	1.00	FOS + 60M
Mal_ECS_FP209	68.9522476	8.4756927	1.00	FOS + 60M
Mal_ECS_FP210	68.9469757	8.4597902	1.00	FOS + 60M
Mal_ECS_FP211	68.9419785	8.4438009	1.00	FOS + 60M
Mal_ECS_FP212	68.9372482	8.4277306	1.00	FOS + 60M
Mal_ECS_FP213	68.9327927	8.4115839	1.00	FOS + 60M
Mal_ECS_FP214	68.9285965	8.3953657	1.00	FOS + 60M
Mal_ECS_FP215	68.9246826	8.3790798	1.00	FOS + 60M
Mal_ECS_FP216	68.7818756	7.7523618	38.38	FOS + 60M
Mal_ECS_FP217	68.7783203	7.7359967	1.00	FOS + 60M
Mal_ECS_FP218	68.7750320	7.7195740	1.00	FOS + 60M
Mal_ECS_FP219	68.7720184	7.7030997	1.00	FOS + 60M
Mal_ECS_FP220	68.7692871	7.6865773	1.00	FOS + 60M
Mal_ECS_FP221	68.7668304	7.6700120	1.00	FOS + 60M
Mal_ECS_FP222	68.6350784	6.7128987	57.69	FOS + 60M
Mal_ECS_FP223	68.6330109	6.6962800	1.00	FOS + 60M



Mal_ECS_FP224	68.6312256	6.6796293	1.00	FOS + 60M
Mal_ECS_FP225	68.6297073	6.6629505	1.00	FOS + 60M
Mal_ECS_FP226	68.6284714	6.6462493	1.00	FOS + 60M
Mal_ECS_FP227	68.6275177	6.6295295	1.00	FOS + 60M
Mal_ECS_FP228	68.6268387	6.6127963	1.00	FOS + 60M
Mal_ECS_FP229	68.6264420	6.5960536	1.00	FOS + 60M
Mal_ECS_FP230	68.6263199	6.5793071	1.00	FOS + 60M
Mal_ECS_FP231	68.6264801	6.5625610	1.00	FOS + 60M
Mal_ECS_FP232	68.6269226	6.5458193	1.00	FOS + 60M
Mal_ECS_FP233	68.6276398	6.5290875	1.00	FOS + 60M
Mal_ECS_FP234	68.6286316	6.5123701	1.00	FOS + 60M
Mal_ECS_FP235	68.6299057	6.4956713	1.00	FOS + 60M
Mal_ECS_FP236	68.6314621	6.4789968	1.00	FOS + 60M
Mal_ECS_FP237	68.6332932	6.4623494	1.00	FOS + 60M
Mal_ECS_FP238	68.6353989	6.4457355	1.00	FOS + 60M
Mal_ECS_FP239	68.6377792	6.4291596	1.00	FOS + 60M
Mal_ECS_FP240	68.6404419	6.4126244	1.00	FOS + 60M
Mal_ECS_FP241	68.6433716	6.3961372	1.00	FOS + 60M
Mal_ECS_FP242	68.6465759	6.3797007	1.00	FOS + 60M
Mal_ECS_FP243	68.6500626	6.3633189	1.00	FOS + 60M
Mal_ECS_FP244	68.6538162	6.3469992	1.00	FOS + 60M
Mal_ECS_FP245	68.6578369	6.3307438	1.00	FOS + 60M
Mal_ECS_FP246	68.6621323	6.3145566	1.00	FOS + 60M
Mal_ECS_FP247	68.6666946	6.2984438	1.00	FOS + 60M
Mal_ECS_FP248	68.6715240	6.2824087	1.00	FOS + 60M
Mal_ECS_FP249	68.6766205	6.2664561	1.00	FOS + 60M
Mal_ECS_FP250	68.6819763	6.2505913	1.00	FOS + 60M
Mal_ECS_FP251	68.6876068	6.2348180	1.00	FOS + 60M
Mal_ECS_FP252	68.6934891	6.2191405	1.00	FOS + 60M
Mal_ECS_FP253	68.6996307	6.2035637	1.00	FOS + 60M
Mal_ECS_FP254	68.7060394	6.1880898	1.00	FOS + 60M
Mal_ECS_FP255	68.7126999	6.1727257	1.00	FOS + 60M
Mal_ECS_FP256	68.7196121	6.1574745	1.00	FOS + 60M
Mal_ECS_FP257	68.7267761	6.1423416	1.00	FOS + 60M
Mal_ECS_FP258	68.7341995	6.1273284	1.00	FOS + 60M
Mal_ECS_FP259	68.7418671	6.1124411	1.00	FOS + 60M
Mal_ECS_FP260	68.7497787	6.0976844	1.00	FOS + 60M
Mal_ECS_FP261	69.1834030	5.2109165	58.96	FOS + 60M
Mal_ECS_FP262	69.1800995	5.1944995	1.00	FOS + 60M
Mal_ECS_FP263	69.1770706	5.1780291	1.00	FOS + 60M
Mal_ECS_FP264	69.1743088	5.1615109	1.00	FOS + 60M
Mal_ECS_FP265	69.1718292	5.1449490	1.00	FOS + 60M
Mal_ECS_FP266	69.1696167	5.1283479	1.00	FOS + 60M
Mal_ECS_FP267	69.1676865	5.1117120	1.00	FOS + 60M
Mal_ECS_FP268	69.1660385	5.0950465	1.00	FOS + 60M
Mal_ECS_FP269	69.1646576	5.0783553	1.00	FOS + 60M
Mal_ECS_FP270	69.1635590	5.0616436	1.00	FOS + 60M



Mal_ECS_FP271	69.1627350	5.0449157	1.00	FOS + 60M
Mal_ECS_FP272	69.1621933	5.0281763	1.00	FOS + 60M
Mal_ECS_FP273	69.1619339	5.0114307	1.00	FOS + 60M
Mal_ECS_FP274	69.1619415	4.9946828	1.00	FOS + 60M
Mal_ECS_FP275	69.1622391	4.9779372	1.00	FOS + 60M
Mal_ECS_FP276	69.1628036	4.9611993	1.00	FOS + 60M
Mal_ECS_FP277	69.1636505	4.9444733	1.00	FOS + 60M
Mal_ECS_FP278	69.1647797	4.9277630	1.00	FOS + 60M
Mal_ECS_FP279	69.1661835	4.9110746	1.00	FOS + 60M
Mal_ECS_FP280	69.1678619	4.8944116	1.00	FOS + 60M
Mal_ECS_FP281	69.1698151	4.8777790	1.00	FOS + 60M
Mal_ECS_FP282	69.1720505	4.8611813	1.00	FOS + 60M
Mal_ECS_FP283	69.1745605	4.8446236	1.00	FOS + 60M
Mal_ECS_FP284	69.1773376	4.8281097	1.00	FOS + 60M
Mal_ECS_FP285	69.1803970	4.8116446	1.00	FOS + 60M
Mal_ECS_FP286	69.1837234	4.7952332	1.00	FOS + 60M
Mal_ECS_FP287	69.1873245	4.7788787	1.00	FOS + 60M
Mal_ECS_FP288	69.1912003	4.7625875	1.00	FOS + 60M
Mal_ECS_FP289	69.1953430	4.7463636	1.00	FOS + 60M
Mal_ECS_FP290	69.1997528	4.7302117	1.00	FOS + 60M
Mal_ECS_FP291	69.2044296	4.7141352	1.00	FOS + 60M
Mal_ECS_FP292	69.2093735	4.6981382	1.00	FOS + 60M
Mal_ECS_FP293	69.2145844	4.6822262	1.00	FOS + 60M
Mal_ECS_FP294	69.2200546	4.6664042	1.00	FOS + 60M
Mal_ECS_FP295	69.2257919	4.6506743	1.00	FOS + 60M
Mal_ECS_FP296	69.2317810	4.6350441	1.00	FOS + 60M
Mal_ECS_FP297	69.3604660	3.6459701	59.56	Maldives 200M



ANNEX 2

MAL-ES-DOC-ANNEX 2

**Table listing the points defining the outer limits of the Republic of Maldives extended continental shelf
(Degrees, Minutes, Seconds)**

Eastern Area								
Fixed Point	Longitude			Latitude			Distance from Fixed Point	Article 76 Method
	Deg	Min	Sec	Deg	Min	Sec		
Mal_ECS_FP1	75	11	24.37	-3	41	57.68	0.00	CHAGOS 200M
Mal_ECS_FP2	75	12	6.11	-3	40	40.43	1.46	FOS+60M
Mal_ECS_FP3	75	12	33.61	-3	39	46.82	1.00	FOS+60M
Mal_ECS_FP4	75	13	0.17	-3	38	52.77	1.00	FOS+60M
Mal_ECS_FP5	75	13	25.85	-3	37	58.28	1.00	FOS+60M
Mal_ECS_FP6	75	13	50.62	-3	37	3.36	1.00	FOS+60M
Mal_ECS_FP7	75	14	14.49	-3	36	8.03	1.00	FOS+60M
Mal_ECS_FP8	75	14	37.42	-3	35	12.31	1.00	FOS+60M
Mal_ECS_FP9	75	14	59.42	-3	34	16.21	1.00	FOS+60M
Mal_ECS_FP10	75	15	20.49	-3	33	19.75	1.00	FOS+60M
Mal_ECS_FP11	75	15	40.62	-3	32	22.95	1.00	FOS+60M
Mal_ECS_FP12	75	15	59.82	-3	31	25.82	1.00	FOS+60M
Mal_ECS_FP13	75	16	18.06	-3	30	28.37	1.00	FOS+60M
Mal_ECS_FP14	75	16	35.33	-3	29	30.64	1.00	FOS+60M
Mal_ECS_FP15	75	16	51.65	-3	28	32.61	1.00	FOS+60M
Mal_ECS_FP16	75	17	7.00	-3	27	34.32	1.00	FOS+60M
Mal_ECS_FP17	75	17	21.39	-3	26	35.79	1.00	FOS+60M
Mal_ECS_FP18	75	17	34.80	-3	25	37.02	1.00	FOS+60M
Mal_ECS_FP19	75	17	47.24	-3	24	38.04	1.00	FOS+60M
Mal_ECS_FP20	75	17	58.69	-3	23	38.85	1.00	FOS+60M
Mal_ECS_FP21	75	18	9.16	-3	22	39.48	1.00	FOS+60M
Mal_ECS_FP22	75	18	18.63	-3	21	39.94	1.00	FOS+60M
Mal_ECS_FP23	75	18	27.15	-3	20	40.25	1.00	FOS+60M
Mal_ECS_FP24	76	0	10.49	-2	37	27.95	59.92	FOS+60M
Mal_ECS_FP25	76	1	9.74	-2	37	37.20	1.00	FOS+60M
Mal_ECS_FP26	76	2	9.12	-2	37	45.45	1.00	FOS+60M
Mal_ECS_FP27	76	3	8.64	-2	37	52.71	1.00	FOS+60M



Mal_ECS_FP28	76	4	8.26	-2	37	58.96	1.00	FOS+60M
Mal_ECS_FP29	76	5	8.00	-2	38	4.22	1.00	FOS+60M
Mal_ECS_FP30	76	6	7.82	-2	38	8.47	1.00	FOS+60M
Mal_ECS_FP31	76	7	7.70	-2	38	11.72	1.00	FOS+60M
Mal_ECS_FP32	76	8	7.60	-2	38	13.97	1.00	FOS+60M
Mal_ECS_FP33	76	9	7.53	-2	38	15.21	1.00	FOS+60M
Mal_ECS_FP34	76	10	7.49	-2	38	15.44	1.00	FOS+60M
Mal_ECS_FP35	76	11	7.45	-2	38	14.67	1.00	FOS+60M
Mal_ECS_FP36	76	12	7.38	-2	38	12.89	1.00	FOS+60M
Mal_ECS_FP37	76	13	7.28	-2	38	10.11	1.00	FOS+60M
Mal_ECS_FP38	76	14	7.13	-2	38	6.32	1.00	FOS+60M
Mal_ECS_FP39	76	15	6.89	-2	38	1.53	1.00	FOS+60M
Mal_ECS_FP40	76	16	6.58	-2	37	55.74	1.00	FOS+60M
Mal_ECS_FP41	76	17	6.15	-2	37	48.95	1.00	FOS+60M
Mal_ECS_FP42	76	18	5.61	-2	37	41.16	1.00	FOS+60M
Mal_ECS_FP43	76	19	4.94	-2	37	32.37	1.00	FOS+60M
Mal_ECS_FP44	76	20	4.10	-2	37	22.59	1.00	FOS+60M
Mal_ECS_FP45	76	21	3.10	-2	37	11.82	1.00	FOS+60M
Mal_ECS_FP46	76	22	1.90	-2	37	0.06	1.00	FOS+60M
Mal_ECS_FP47	76	23	0.52	-2	36	47.32	1.00	FOS+60M
Mal_ECS_FP48	76	23	58.88	-2	36	33.60	1.00	FOS+60M
Mal_ECS_FP49	76	24	57.05	-2	36	18.89	1.00	FOS+60M
Mal_ECS_FP50	76	25	54.92	-2	36	3.22	1.00	FOS+60M
Mal_ECS_FP51	76	26	52.55	-2	35	46.58	1.00	FOS+60M
Mal_ECS_FP52	76	27	49.89	-2	35	28.97	1.00	FOS+60M
Mal_ECS_FP53	76	28	46.91	-2	35	10.41	1.00	FOS+60M
Mal_ECS_FP54	76	29	43.66	-2	34	50.89	1.00	FOS+60M
Mal_ECS_FP55	76	30	40.05	-2	34	30.42	1.00	FOS+60M
Mal_ECS_FP56	76	31	36.08	-2	34	9.01	1.00	FOS+60M
Mal_ECS_FP57	76	32	31.78	-2	33	46.66	1.00	FOS+60M
Mal_ECS_FP58	76	33	27.07	-2	33	23.38	1.00	FOS+60M
Mal_ECS_FP59	76	34	21.97	-2	32	59.17	1.00	FOS+60M
Mal_ECS_FP60	76	35	16.49	-2	32	34.05	1.00	FOS+60M
Mal_ECS_FP61	76	36	10.54	-2	32	8.02	1.00	FOS+60M
Mal_ECS_FP62	76	37	4.18	-2	31	41.09	1.00	FOS+60M
Mal_ECS_FP63	76	37	57.36	-2	31	13.26	1.00	FOS+60M
Mal_ECS_FP64	76	38	50.06	-2	30	44.54	1.00	FOS+60M
Mal_ECS_FP65	76	39	42.30	-2	30	14.94	1.00	FOS+60M
Mal_ECS_FP66	76	40	34.05	-2	29	44.47	1.00	FOS+60M
Mal_ECS_FP67	76	41	25.25	-2	29	13.13	1.00	FOS+60M
Mal_ECS_FP68	76	42	15.95	-2	28	40.94	1.00	FOS+60M
Mal_ECS_FP69	76	43	6.10	-2	28	7.90	1.00	FOS+60M
Mal_ECS_FP70	76	43	55.70	-2	27	34.02	1.00	FOS+60M
Mal_ECS_FP71	76	44	44.73	-2	26	59.32	1.00	FOS+60M
Mal_ECS_FP72	76	45	33.18	-2	26	23.80	1.00	FOS+60M



Mal_ECS_FP73	76	46	21.02	-2	25	47.49	1.00	FOS+60M
Mal_ECS_FP74	76	47	8.27	-2	25	10.36	1.00	FOS+60M
Mal_ECS_FP75	76	47	54.90	-2	24	32.44	1.00	FOS+60M
Mal_ECS_FP76	76	48	40.88	-2	23	53.75	1.00	FOS+60M
Mal_ECS_FP77	76	49	26.20	-2	23	14.30	1.00	FOS+60M
Mal_ECS_FP78	76	50	10.89	-2	22	34.09	1.00	FOS+60M
Mal_ECS_FP79	76	50	54.89	-2	21	53.14	1.00	FOS+60M
Mal_ECS_FP80	76	51	38.20	-2	21	11.45	1.00	FOS+60M
Mal_ECS_FP81	76	52	20.83	-2	20	29.05	1.00	FOS+60M
Mal_ECS_FP82	76	53	2.74	-2	19	45.94	1.00	FOS+60M
Mal_ECS_FP83	76	53	43.91	-2	19	2.13	1.00	FOS+60M
Mal_ECS_FP84	76	54	24.37	-2	18	17.63	1.00	FOS+60M
Mal_ECS_FP85	76	55	4.08	-2	17	32.47	1.00	FOS+60M
Mal_ECS_FP86	76	55	43.03	-2	16	46.65	1.00	FOS+60M
Mal_ECS_FP87	76	56	21.21	-2	16	0.18	1.00	FOS+60M
Mal_ECS_FP88	76	56	58.64	-2	15	13.07	1.00	FOS+60M
Mal_ECS_FP89	76	57	35.26	-2	14	25.34	1.00	FOS+60M
Mal_ECS_FP90	76	58	11.10	-2	13	37.00	1.00	FOS+60M
Mal_ECS_FP91	76	58	46.12	-2	12	48.07	1.00	FOS+60M
Mal_ECS_FP92	76	59	20.34	-2	11	58.55	1.00	FOS+60M
Mal_ECS_FP93	76	59	53.74	-2	11	8.48	1.00	FOS+60M
Mal_ECS_FP94	77	0	26.29	-2	10	17.84	1.00	FOS+60M
Mal_ECS_FP95	77	0	57.98	-2	9	26.67	1.00	FOS+60M
Mal_ECS_FP96	77	1	28.82	-2	8	34.99	1.00	FOS+60M
Mal_ECS_FP97	77	1	58.82	-2	7	42.78	1.00	FOS+60M
Mal_ECS_FP98	77	2	27.96	-2	6	50.08	1.00	FOS+60M
Mal_ECS_FP99	77	2	56.19	-2	5	56.90	1.00	FOS+60M
Mal_ECS_FP100	77	3	23.55	-2	5	3.24	1.00	FOS+60M
Mal_ECS_FP101	77	3	50.03	-2	4	9.15	1.00	FOS+60M
Mal_ECS_FP102	77	4	15.60	-2	3	14.62	1.00	FOS+60M
Mal_ECS_FP103	77	4	40.23	-2	2	19.65	1.00	FOS+60M
Mal_ECS_FP104	77	5	3.99	-2	1	24.29	1.00	FOS+60M
Mal_ECS_FP105	77	5	26.82	-2	0	28.54	1.00	FOS+60M
Mal_ECS_FP106	77	5	48.71	-1	59	32.41	1.00	FOS+60M
Mal_ECS_FP107	77	6	9.69	-1	58	35.92	1.00	FOS+60M
Mal_ECS_FP108	77	6	29.71	-1	57	39.09	1.00	FOS+60M
Mal_ECS_FP109	77	6	48.77	-1	56	41.93	1.00	FOS+60M
Mal_ECS_FP110	77	7	6.93	-1	55	44.46	1.00	FOS+60M
Mal_ECS_FP111	77	7	24.10	-1	54	46.69	1.00	FOS+60M
Mal_ECS_FP112	77	7	40.30	-1	53	48.65	1.00	FOS+60M
Mal_ECS_FP113	77	7	55.57	-1	52	50.34	1.00	FOS+60M
Mal_ECS_FP114	77	8	9.85	-1	51	51.77	1.00	FOS+60M
Mal_ECS_FP115	77	8	23.15	-1	50	52.98	1.00	FOS+60M
Mal_ECS_FP116	77	22	27.25	0	-53	22.86	58.93	FOS+60M
Mal_ECS_FP117	77	23	13.81	0	-52	44.90	1.00	FOS+60M



Mal_ECS_FP118	77	23	59.70	0	-52	6.17	1.00	FOS+60M
Mal_ECS_FP119	77	24	44.97	0	-51	26.66	1.00	FOS+60M
Mal_ECS_FP120	77	25	29.57	0	-50	46.41	1.00	FOS+60M
Mal_ECS_FP121	77	26	13.49	0	-50	5.41	1.00	FOS+60M
Mal_ECS_FP122	77	26	56.72	0	-49	23.68	1.00	FOS+60M
Mal_ECS_FP123	77	27	39.27	0	-48	41.23	1.00	FOS+60M
Mal_ECS_FP124	77	28	21.10	0	-47	58.07	1.00	FOS+60M
Mal_ECS_FP125	77	29	2.21	0	-47	14.22	1.00	FOS+60M
Mal_ECS_FP126	77	29	42.61	0	-46	29.68	1.00	FOS+60M
Mal_ECS_FP127	77	30	22.25	0	-45	44.48	1.00	FOS+60M
Mal_ECS_FP128	77	31	1.11	0	-44	58.61	1.00	FOS+60M
Mal_ECS_FP129	77	31	39.23	0	-44	12.09	1.00	FOS+60M
Mal_ECS_FP130	77	32	16.59	0	-43	24.94	1.00	FOS+60M
Mal_ECS_FP131	77	32	53.15	0	-42	37.17	1.00	FOS+60M
Mal_ECS_FP132	77	33	28.91	0	-41	48.80	1.00	FOS+60M
Mal_ECS_FP133	77	34	3.87	0	-40	59.83	1.00	FOS+60M
Mal_ECS_FP134	77	34	37.98	0	-40	10.29	1.00	FOS+60M
Mal_ECS_FP135	77	35	11.30	0	-39	20.18	1.00	FOS+60M
Mal_ECS_FP136	77	35	43.79	0	-38	29.53	1.00	FOS+60M
Mal_ECS_FP137	77	36	15.40	0	-37	38.33	1.00	FOS+60M
Mal_ECS_FP138	77	36	46.19	0	-36	46.60	1.00	FOS+60M
Mal_ECS_FP139	77	37	16.13	0	-35	54.37	1.00	FOS+60M
Mal_ECS_FP140	77	37	45.16	0	-35	1.64	1.00	FOS+60M
Mal_ECS_FP141	77	38	13.34	0	-34	8.44	1.00	FOS+60M
Mal_ECS_FP142	77	38	40.64	0	-33	14.77	1.00	FOS+60M
Mal_ECS_FP143	77	39	7.04	0	-32	20.65	1.00	FOS+60M
Mal_ECS_FP144	77	39	32.53	0	-31	26.08	1.00	FOS+60M
Mal_ECS_FP145	78	3	14.43	0	14	53.99	51.86	FOS+60M
Mal_ECS_FP146	78	3	42.72	0	15	47.13	1.00	FOS+60M
Mal_ECS_FP147	78	4	10.16	0	16	40.74	1.00	FOS+60M
Mal_ECS_FP148	78	36	17.00	0	33	1.80	36.05	FOS+60M
Mal_ECS_FP149	78	37	10.75	0	33	28.39	1.00	FOS+60M
Mal_ECS_FP150	78	38	4.03	0	33	55.87	1.00	FOS+60M
Mal_ECS_FP151	78	38	56.87	0	34	24.25	1.00	FOS+60M
Mal_ECS_FP152	78	39	49.25	0	34	53.51	1.00	FOS+60M
Mal_ECS_FP153	78	40	41.14	0	35	23.64	1.00	FOS+60M
Mal_ECS_FP154	78	41	32.52	0	35	54.64	1.00	FOS+60M
Mal_ECS_FP155	78	42	23.39	0	36	26.51	1.00	FOS+60M
Mal_ECS_FP156	78	43	13.71	0	36	59.21	1.00	FOS+60M
Mal_ECS_FP157	78	44	3.48	0	37	32.77	1.00	FOS+60M
Mal_ECS_FP158	78	44	52.69	0	38	7.14	1.00	FOS+60M
Mal_ECS_FP159	78	45	41.34	0	38	42.34	1.00	FOS+60M
Mal_ECS_FP160	78	46	29.37	0	39	18.35	1.00	FOS+60M
Mal_ECS_FP161	78	47	16.84	0	39	55.17	1.00	FOS+60M
Mal_ECS_FP162	78	48	3.66	0	40	32.76	1.00	FOS+60M



Mal_ECS_FP163	78	48	49.86	0	41	11.15	1.00	FOS+60M
Mal_ECS_FP164	78	49	35.40	0	41	50.30	1.00	FOS+60M
Mal_ECS_FP165	78	50	20.31	0	42	30.21	1.00	FOS+60M
Mal_ECS_FP166	78	51	4.55	0	43	10.86	1.00	FOS+60M
Mal_ECS_FP167	78	51	48.09	0	43	52.25	1.00	FOS+60M
Mal_ECS_FP168	78	52	30.96	0	44	34.37	1.00	FOS+60M
Mal_ECS_FP169	78	53	13.12	0	45	17.20	1.00	FOS+60M
Mal_ECS_FP170	78	53	54.57	0	46	0.72	1.00	FOS+60M
Mal_ECS_FP171	78	54	35.30	0	46	44.94	1.00	FOS+60M
Mal_ECS_FP172	78	55	15.26	0	47	29.84	1.00	FOS+60M
Mal_ECS_FP173	78	55	54.51	0	48	15.40	1.00	FOS+60M
Mal_ECS_FP174	78	56	32.99	0	49	1.61	1.00	FOS+60M
Mal_ECS_FP175	78	57	10.70	0	49	48.47	1.00	FOS+60M
Mal_ECS_FP176	78	57	47.62	0	50	35.95	1.00	FOS+60M
Mal_ECS_FP177	78	58	23.76	0	51	24.04	1.00	FOS+60M
Mal_ECS_FP178	78	58	59.08	0	52	12.73	1.00	FOS+60M
Mal_ECS_FP179	78	59	33.61	0	53	2.00	1.00	FOS+60M
Mal_ECS_FP180	79	0	7.31	0	53	51.85	1.00	FOS+60M
Mal_ECS_FP181	79	0	40.18	0	54	42.25	1.00	FOS+60M
Mal_ECS_FP182	79	1	12.21	0	55	33.21	1.00	FOS+60M
Mal_ECS_FP183	79	1	43.38	0	56	24.69	1.00	FOS+60M
Mal_ECS_FP184	79	2	13.73	0	57	16.69	1.00	FOS+60M
Mal_ECS_FP185	79	2	43.17	0	58	9.18	1.00	FOS+60M
Mal_ECS_FP186	79	3	11.77	0	59	2.17	1.00	FOS+60M
Mal_ECS_FP187	79	3	39.48	0	59	55.63	1.00	FOS+60M
Mal_ECS_FP188	79	4	6.31	1	0	49.54	1.00	FOS+60M
Mal_ECS_FP189	79	4	32.24	1	1	43.90	1.00	FOS+60M
Mal_ECS_FP190	79	4	57.26	1	2	38.68	1.00	FOS+60M
Mal_ECS_FP191	79	5	21.38	1	3	33.88	1.00	FOS+60M
Mal_ECS_FP192	79	5	44.56	1	4	29.47	1.00	FOS+60M
Mal_ECS_FP193	79	6	6.83	1	5	25.45	1.00	FOS+60M
Mal_ECS_FP194	79	6	28.17	1	6	21.79	1.00	FOS+60M
Mal_ECS_FP195	79	6	48.58	1	7	18.48	1.00	FOS+60M
Mal_ECS_FP196	79	7	8.06	1	8	15.51	1.00	FOS+60M
Mal_ECS_FP197	79	7	26.57	1	9	12.85	1.00	FOS+60M
Mal_ECS_FP198	79	7	44.15	1	10	10.49	1.00	FOS+60M
Mal_ECS_FP199	79	8	0.76	1	11	8.42	1.00	FOS+60M
Mal_ECS_FP200	79	8	16.39	1	12	6.62	1.00	FOS+60M
Mal_ECS_FP201	79	28	24.01	2	8	27.27	59.58	350M
Mal_ECS_FP202	80	21	3.73	2	34	23.43	58.69	200M SL



Western Area								
Fixed Point	Longitude			Latitude			Distance to last FP	Article 76 Method
	Deg	Min	Sec	Deg	Min	Sec		
Mal_ECS_FP203	68	52	15.42	7	59	41.74	0.00	FOS+60M
Mal_ECS_FP204	68	51	47.95	7	58	48.04	1.00	FOS+60M
Mal_ECS_FP205	68	51	21.36	7	57	53.89	1.00	FOS+60M
Mal_ECS_FP206	68	50	55.71	7	56	59.31	1.00	FOS+60M
Mal_ECS_FP207	68	50	30.96	7	56	4.30	1.00	FOS+60M
Mal_ECS_FP208	68	50	7.15	7	55	8.89	1.00	FOS+60M
Mal_ECS_FP209	68	49	44.27	7	54	13.10	1.00	FOS+60M
Mal_ECS_FP210	68	49	22.30	7	53	16.92	1.00	FOS+60M
Mal_ECS_FP211	68	49	1.29	7	52	20.39	1.00	FOS+60M
Mal_ECS_FP212	68	48	41.24	7	51	23.52	1.00	FOS+60M
Mal_ECS_FP213	68	48	22.12	7	50	26.32	1.00	FOS+60M
Mal_ECS_FP214	68	48	3.99	7	49	28.82	1.00	FOS+60M
Mal_ECS_FP215	68	47	46.80	7	48	31.02	1.00	FOS+60M
Mal_ECS_FP216	68	47	30.60	7	47	32.94	1.00	FOS+60M
Mal_ECS_FP217	68	47	15.35	7	46	34.61	1.00	FOS+60M
Mal_ECS_FP218	68	47	1.10	7	45	36.02	1.00	FOS+60M
Mal_ECS_FP219	68	46	47.83	7	44	37.21	1.00	FOS+60M
Mal_ECS_FP220	68	46	35.53	7	43	38.18	1.00	FOS+60M
Mal_ECS_FP221	68	46	24.24	7	42	38.96	1.00	FOS+60M
Mal_ECS_FP222	68	46	13.91	7	41	39.55	1.00	FOS+60M
Mal_ECS_FP223	68	46	4.60	7	40	39.99	1.00	FOS+60M
Mal_ECS_FP224	68	45	56.28	7	39	40.28	1.00	FOS+60M
Mal_ECS_FP225	68	45	48.97	7	38	40.44	1.00	FOS+60M
Mal_ECS_FP226	68	37	10.61	6	45	27.31	53.66	FOS+60M
Mal_ECS_FP227	68	37	0.34	6	44	27.90	1.00	FOS+60M
Mal_ECS_FP228	68	36	51.08	6	43	28.32	1.00	FOS+60M
Mal_ECS_FP229	68	36	42.81	6	42	28.60	1.00	FOS+60M
Mal_ECS_FP230	68	36	35.54	6	41	28.75	1.00	FOS+60M
Mal_ECS_FP231	68	36	29.27	6	40	28.79	1.00	FOS+60M
Mal_ECS_FP232	68	36	24.00	6	39	28.73	1.00	FOS+60M
Mal_ECS_FP233	68	36	19.74	6	38	28.60	1.00	FOS+60M
Mal_ECS_FP234	68	36	16.47	6	37	28.40	1.00	FOS+60M
Mal_ECS_FP235	68	36	14.22	6	36	28.15	1.00	FOS+60M
Mal_ECS_FP236	68	36	12.96	6	35	27.87	1.00	FOS+60M
Mal_ECS_FP237	68	36	12.71	6	34	27.58	1.00	FOS+60M
Mal_ECS_FP238	68	36	13.45	6	33	27.30	1.00	FOS+60M
Mal_ECS_FP239	68	36	15.21	6	32	27.04	1.00	FOS+60M



Mal_ECS_FP240	68	36	17.99	6	31	26.81	1.00	FOS+60M
Mal_ECS_FP241	68	36	21.75	6	30	26.64	1.00	FOS+60M
Mal_ECS_FP242	68	36	26.50	6	29	26.54	1.00	FOS+60M
Mal_ECS_FP243	68	36	32.27	6	28	26.52	1.00	FOS+60M
Mal_ECS_FP244	68	36	39.05	6	27	26.62	1.00	FOS+60M
Mal_ECS_FP245	68	36	46.80	6	26	26.83	1.00	FOS+60M
Mal_ECS_FP246	68	36	55.56	6	25	27.18	1.00	FOS+60M
Mal_ECS_FP247	68	37	5.31	6	24	27.68	1.00	FOS+60M
Mal_ECS_FP248	68	37	16.05	6	23	28.36	1.00	FOS+60M
Mal_ECS_FP249	68	37	27.75	6	22	29.22	1.00	FOS+60M
Mal_ECS_FP250	68	37	40.46	6	21	30.28	1.00	FOS+60M
Mal_ECS_FP251	68	37	54.14	6	20	31.56	1.00	FOS+60M
Mal_ECS_FP252	68	38	8.81	6	19	33.08	1.00	FOS+60M
Mal_ECS_FP253	68	38	24.44	6	18	34.86	1.00	FOS+60M
Mal_ECS_FP254	68	38	41.03	6	17	36.90	1.00	FOS+60M
Mal_ECS_FP255	68	38	58.61	6	16	39.22	1.00	FOS+60M
Mal_ECS_FP256	68	39	17.12	6	15	41.85	1.00	FOS+60M
Mal_ECS_FP257	68	39	36.59	6	14	44.79	1.00	FOS+60M
Mal_ECS_FP258	68	39	57.00	6	13	48.07	1.00	FOS+60M
Mal_ECS_FP259	68	40	18.34	6	12	51.69	1.00	FOS+60M
Mal_ECS_FP260	68	40	40.64	6	11	55.68	1.00	FOS+60M
Mal_ECS_FP261	68	41	3.85	6	11	0.04	1.00	FOS+60M
Mal_ECS_FP262	68	41	27.99	6	10	4.80	1.00	FOS+60M
Mal_ECS_FP263	68	41	53.04	6	9	9.97	1.00	FOS+60M
Mal_ECS_FP264	68	42	19.02	6	8	15.57	1.00	FOS+60M
Mal_ECS_FP265	68	42	45.88	6	7	21.61	1.00	FOS+60M
Mal_ECS_FP266	68	43	13.63	6	6	28.10	1.00	FOS+60M
Mal_ECS_FP267	68	43	42.27	6	5	35.06	1.00	FOS+60M
Mal_ECS_FP268	68	44	11.80	6	4	42.52	1.00	FOS+60M
Mal_ECS_FP269	68	44	42.18	6	3	50.46	1.00	FOS+60M
Mal_ECS_FP270	68	45	13.43	6	2	58.92	1.00	FOS+60M
Mal_ECS_FP271	68	45	45.54	6	2	7.91	1.00	FOS+60M
Mal_ECS_FP272	68	46	18.47	6	1	17.44	1.00	FOS+60M
Mal_ECS_FP273	68	46	52.25	6	0	27.52	1.00	FOS+60M
Mal_ECS_FP274	68	47	26.86	5	59	38.17	1.00	FOS+60M
Mal_ECS_FP275	68	48	2.26	5	58	49.41	1.00	FOS+60M
Mal_ECS_FP276	68	48	38.49	5	58	1.26	1.00	FOS+60M
Mal_ECS_FP277	68	49	15.52	5	57	13.70	1.00	FOS+60M
Mal_ECS_FP278	68	49	53.31	5	56	26.76	1.00	FOS+60M
Mal_ECS_FP279	68	50	31.90	5	55	40.47	1.00	FOS+60M
Mal_ECS_FP280	68	51	11.23	5	54	54.83	1.00	FOS+60M
Mal_ECS_FP281	69	18	41.95	5	0	46.23	60.00	200 Mald