

EXECUTIVE SUMMARY

**A PARTIAL SUBMISSION OF DATA AND INFORMATION
ON THE OUTER LIMITS OF THE CONTINENTAL SHELF
OF THE UNITED MEXICAN STATES PURSUANT TO
PART VI OF AND ANNEX II TO THE UNITED NATIONS
CONVENTION ON THE LAW OF THE SEA**

PART I

**Submission to the Commission on the Limits of the Continental Shelf
through the Secretary-General of the United Nations**

June 2025

TABLE OF CONTENTS

List of Tables	ii
List of Figures	ii
1. Introduction and Objectives	1
2. Justification for the update of the outer limits of the continental shelf of Mexico in the Eastern Polygon of the Gulf of Mexico	10
3. The outer limit of the continental shelf in the Eastern Polygon	10
3.1 The foot of the continental slope plus 60 M formula	12
3.2 The 350 M constraint	13
3.3 The other limit of the continental shelf in accordance with the rules of article 76	14
3.4 The outer limit of the continental shelf considering the treaties signed with Cuba and the United States.....	17
4. Names of members of the CLCS who provided advice	18
5. Absence of disputes	19
6. Mexican institutions responsible for the preparation of this partial submission	19

LIST OF TABLES

Table 1.	List of coordinates of the turning points that define the outer limit of the continental shelf beyond 200 nautical miles at distances not exceeding 60 nautical miles	14
Table 2.	List of coordinates of the turning points that define the outer limit of the continental shelf beyond 200 nautical miles in the Eastern Polygon, considering the treaties signed with Cuba and the United States	18

LIST OF FIGURES

Figure 1.1	The Western and Eastern Polygons beyond 200 M from which the breadth of the territorial sea is measured in the Gulf of Mexico	20
Figure 1.2	International maritime boundaries established in the Agreements between Mexico and Cuba in 1976 and 2017, and Mexico and the United States in 1978 and 2000, as well as the boundary reflected in the treaty signed by Mexico and the United States in 2017	21
Figure 1.3	The outer limit of the continental shelf beyond 200 nautical miles in the Eastern Polygon	22
Figure 1.4	The outer limit of the continental shelf beyond 200 nautical miles in the Eastern Polygon of the Gulf of Mexico considering the treaties signed with Cuba and the United States	23

1. INTRODUCTION AND OBJECTIVES

The continental shelf under national jurisdiction is defined under paragraph 1 of article 76 of the United Nations Convention on the Law of the Sea (the Convention) as:

The continental shelf of a coastal State comprises the sea-bed and subsoil of the submarine areas that extend beyond its territorial sea throughout the natural prolongation of its land territory to the outer edge of the continental margin, or to a distance of 200 nautical miles from the baselines from which the breadth of the territorial sea is measured where the outer edge of the continental margin does not extend up to that distance.

The continental margin, in turn, is defined under paragraph 3 of article 76 of the Convention as:

The continental margin comprises the submerged prolongation of the land mass of the coastal State, and consists of the sea-bed and subsoil of the shelf the slope and the rise. It does not include the deep ocean floor with its oceanic ridges or the subsoil thereof.

The outer limits of the continental shelf are prescribed under paragraph 2 of article 76 not to exceed the combination of rules referred to in paragraphs 4 to 6 of the same article:

The continental shelf of a coastal State shall not extend beyond the limits provided for in paragraphs 4 to 6.

The Convention also establishes a procedure for the determination of the outer limits of the continental shelf beyond 200 nautical miles by the coastal State based on the recommendations made by the Commission on the Limits of the Continental Shelf (CLCS) in relation to a submission of information on the limits as described in paragraph 8 of article 76:

Information on the limits of the continental shelf beyond 200 nautical miles from the baselines from which the breadth of the territorial sea is measured shall be submitted by the coastal State to the Commission on the Limits of the Continental Shelf set up under Annex II on the basis of equitable geographical representation. The Commission shall make recommendations to coastal States on matters related to the establishment of the outer limits of their continental shelf. The limits of the shelf established by a coastal State on the basis of these recommendations shall be final and binding.

The above procedure is further elaborated in article 4 of Annex II to the Convention with the addition of a temporal requirement and a request designed to inform the Commission:

Where a coastal State intends to establish, in accordance with article 76, the outer limits of its continental shelf beyond 200 nautical miles, it shall submit particulars of such limits to the Commission along with supporting scientific and technical data as soon as possible but in any case within 10 years of the entry into force of this Convention for that State. The coastal State shall at the same time give the names of any Commission members who have provided it with scientific and technical advice.

The Eleventh Meeting of States Parties to the Convention, held from 14 to 18 May 2001, noted that it was only after the adoption of the Scientific and Technical Guidelines by the Commission on 13 May 1999 that States had before them the basic documents concerning submissions in accordance with article 76, paragraph 8, of the Convention. Considering the problems encountered by States Parties, in particular developing countries, including small-island developing States, in complying with the time limit set out in article 4 of Annex II to the Convention; the Meeting of States Parties (SPLOS/72) decided that:

- (a) in the case of a State Party for which the Convention entered into force before 13 May 1999, it is understood that the ten-year time period referred to in article 4 of Annex II to the Convention shall be taken to have commenced on 13 May 1999; and that*

(b) the general issue of the ability of States, particularly developing States, to fulfil the requirements of article 4 of Annex II to the Convention is kept under review.

The Eighteenth Meeting of States Parties to the Convention, held from 13 to 30 June 2008, adopted a decision regarding the workload of the Commission on the Limits of the Continental Shelf and the ability of States, particularly developing States, to fulfil the requirements of article 4 of Annex II to the United Nations Convention on the Law of the Sea, as well as the decision contained in SPLOS/72, paragraph (a) (SPLOS/183). Paragraph 1 of the decision reads:

1. Decides that:

- (a) It is understood that the time period referred to in article 4 of annex II to the Convention and the decision contained in SPLOS/72, paragraph (a), may be satisfied by submitting to the Secretary-General preliminary information indicative of the outer limits of the continental shelf beyond 200 nautical miles and a description of the status of preparation and intended date of making a submission in accordance with the requirements of article 76 of the Convention and with the Rules of Procedure and the Scientific and Technical Guidelines of the Commission on the Limits of the Continental Shelf;*
- (b) Pending the receipt of the submission in accordance with the requirements of article 76 of the Convention and with the Rules of Procedure and the Scientific and Technical Guidelines of the Commission, preliminary information submitted in accordance with subparagraph (a) above shall not be considered by the Commission;*
- (c) Preliminary information submitted by a coastal State in accordance with subparagraph (a) is without prejudice to the submission in accordance with the requirements of article 76 of the Convention and with the Rules of*

Procedure and the Scientific and Technical Guidelines of the Commission, and the consideration of the submission by the Commission;

(d) The Secretary-General shall inform the Commission and notify member States of the receipt of preliminary information in accordance with subparagraph (a), and make such information publicly available, including on the website of the Commission;

In accordance with the decision adopted by the Eighteenth Meeting of States Parties to the Convention, the United Mexican States (Mexico) fulfilled its obligation to submit Preliminary Information indicative of the outer limits of the continental shelf beyond 200 nautical miles in the Eastern Polygon of the Gulf of Mexico and a description of the status of preparation and intended date of making a submission in accordance with the requirements of article 76 of the Convention and with the Rules of Procedure and the Scientific and Technical Guidelines of the Commission on the Limits of the Continental Shelf on 6 May 2009.

The Government of Mexico has identified two polygons located in the western and eastern parts of the Gulf of Mexico over which it can extend its national jurisdiction over the continental shelf beyond 200 nautical miles from the baselines from which the breadth of the territorial sea is measured. The Western Polygon is delineated by the outer limits of the exclusive economic zones of Mexico and the United States of America (United States) at a distance of 200 nautical miles. The Eastern Polygon is delineated by the outer limits of the exclusive economic zones of Mexico, the United States and the Republic of Cuba (Cuba) also at a distance of 200 nautical miles. Figure 1.1 shows the geographical locations and configurations of these two polygons.

The Convention recognizes that competence with respect to the delimitation of international maritime boundaries which may arise in connection with the establishment of the outer limits of the continental shelf rests with States according to article 83, paragraph 1:

The delimitation of the continental shelf between States with opposite or adjacent coasts shall be effected by agreement on the basis of international law, as referred to in Article 38 of the Statute of the International Court of Justice, in order to achieve an equitable solution.

The Convention also recognises, in paragraph 4 of article 83, that in a maritime region where there is an agreement in force, the delimitation of the continental shelf shall be determined in accordance with the provisions of that agreement:

Where there is an agreement in force between the States concerned, questions relating to the delimitation of the continental shelf shall be determined in accordance with the provisions of that agreement.

The overlapping maritime spaces under national jurisdiction leading up to a distance of 200 nautical miles and the overlapping continental shelves located beyond 200 nautical miles in the Western Polygon have been delimited by means of two separate international maritime boundary agreements between Mexico and the United States dated 4 May 1978 and 9 June 2000. Annexes A.1 and A.2 contain copies of the Agreements in force deposited with the Secretary-General of the United Nations, in accordance with article 102 of the UN Charter.

The outer limits of the continental shelf extended beyond 200 nautical miles in the Western Polygon were submitted to the CLCS in a partial submission dated 13 December 2007. The CLCS adopted the Recommendations vis-à-vis this submission 31 March 2009. Mexico was the first State which deposited with the Secretary General, pursuant to article 76, paragraph 9, of the Convention, a chart and relevant information, including geodetic data, permanently describing the final limits of its continental shelf beyond 200 nautical miles from the baselines from which the breadth of the territorial sea is measured in respect of the Western Polygon in the Gulf of Mexico on 20 May 2009. Mexico was also the first State to deposit with the Secretary-General of the International Seabed Authority relevant information permanently describing the outer limits of its continental shelf on 21 October 2009.

In accordance with all the above provisions, and in particular article 83, paragraph 4, it is clear that neither Mexico nor the United States can extend their continental shelves in the Western Polygon beyond the international boundary prescribed in the Continental Shelf Treaty of 9 June 2000.

The overlapping maritime spaces under national jurisdiction leading up to a distance of 200 nautical miles in the Eastern Polygon have been delimited by means of two separate international maritime boundary agreements between Mexico and Cuba, and between Mexico and the United States. The international maritime boundary between Mexico and the United States has been established by means of a Treaty signed 4 May 1978. In turn, the international maritime boundary between Mexico and Cuba has been established by means of an exchange of notes constituting an agreement dated 26 July 1976. Annexes A.1 and A.3 contain copies of the Agreements in force deposited with the Secretary-General of the United Nations in accordance with article 102 of the UN Charter.

The maritime boundary between Mexico and Cuba beyond 200 nautical miles of the continental shelf in the Eastern Polygon was established by means of a treaty dated 18 January 2017. Annex A.4 contains a copy of the Agreement in force deposited with the Secretary-General of the United Nations, pursuant to article 102 of the UN Charter. In accordance with article 83, paragraph 4, of the Convention, neither Mexico nor Cuba can extend their continental shelves in the Eastern Polygon beyond the international boundary prescribed in the treaty of 18 January 2017.

On 18 January 2017, Mexico and the United States signed a treaty on the delimitation of the maritime boundary in the Eastern Gulf of Mexico. Annex A.5 contains a copy of the treaty. Once in force, the treaty shall establish the international boundary of the extended continental shelf between both States in that region. Notably, on 19 December 2023, the United States made a unilateral public announcement on the outer limits of its alleged extended continental shelf

(<https://www.state.gov/the-us-ecs/>). In the Eastern Polygon, the limits announced by the United States correspond to the boundary described in the 2017 treaty.

Figure 1.2 shows the international maritime boundaries established in the Agreements between Mexico and Cuba in 1976 and 2017, and Mexico and the United States in 1978 and 2000, as well as the boundary reflected in the treaty signed by Mexico and the United States in 2017.

The Convention establishes that any outer limits of the continental shelf beyond 200 nautical miles determined in accordance with paragraphs 4 to 6 of article 76 are without prejudice to the delimitation of continental shelf boundaries between States according to paragraph 10 of the same article:

The provisions of this article are without prejudice to the question of delimitation of the continental shelf between States with opposite or adjacent coasts.

The distinction between the delimitation of international continental shelf boundaries and the determination of the outer limits of the continental shelf is further reinforced by a savings provision contained in paragraph 4 of article 134 in the context of the application of Part XI of the Convention:

Nothing in this article affects the establishment of the outer limits of the continental shelf in accordance with Part VI or the validity of agreements relating to delimitation between States with opposite or adjacent coasts.

In addition, the Convention, in Article 9 of Annex II, also urges the Commission to take a cautious approach during the consideration of submissions and the preparation of its recommendations:

The actions of the Commission shall not prejudice matters relating to delimitation of boundaries between States with opposite or adjacent coasts.

This provision is appropriate under certain circumstances because the basis for entitlement to the continental shelf by States cannot be other than pertinent to its delimitation. Mexico takes note of paragraph 3 of Annex I of the Rules of Procedure of the CLCS:

A submission may be made by a coastal State for a portion of its continental shelf in order not to prejudice questions relating to the delimitation of boundaries between States in any other portion or portions of the continental shelf for which a submission may be made later, notwithstanding the provisions regarding the ten-year period established by article 4 of Annex II to the Convention.

In this sense, this second partial submission made by the Government of Mexico concerns only the Eastern Polygon of the Gulf of Mexico. This second partial submission is made taking into consideration:

- the bilateral maritime boundaries leading up to a distance of 200 nautical miles established by the Treaties between Mexico and the United States signed 4 May 1978, Mexico and Cuba by means of an exchange of notes constituting an agreement dated 26 July 1976,
- the bilateral maritime boundary between Mexico and Cuba beyond 200 nautical miles of the extended continental shelf in the Eastern Polygon established by means of a treaty signed 18 January 2017,
- the maritime boundary described in the treaty on the delimitation of the maritime boundary of the extended continental shelf in the Eastern Gulf of Mexico signed by Mexico and the United States on 18 January 2017, and which corresponds to the unilateral public announcement made by the United States on the outer limits of its alleged extended continental shelf on 19 December 2023, and

- a clear understanding that, in accordance with article 76, paragraph 10, the provisions of article 76 are without prejudice to the question of delimitation of the continental shelf between States with opposite or adjacent coasts in the Gulf of Mexico. Thus, in accordance with international law and, in particular, the provisions of article 83, paragraph 1, of the Convention, bilateral international boundaries of the continental shelf beyond 200 nautical miles in the Eastern Polygon of the Gulf of Mexico have already been established by treaties in force or shall be determined once they enter into force.

In light of the above provisions contained in the Convention and Annex I to the Rules of Procedure of the Commission, Mexico makes this second partial submission through the Secretary-General to the Commission

- i) to fulfil its obligations pursuant to paragraph 8 of article 76 of, and article 4 of Annex II to the Convention;
- ii) in accordance with the methodology contained in paragraphs 1 to 7 of article 76 of the Convention; and
- iii) without prejudice to questions relating to the delimitation of international boundaries of the continental shelf among States in the Eastern Polygon of the Gulf of Mexico in accordance with international law.

This partial submission contains data and information used in support of the determination of the outer limits of the continental shelf beyond 200 nautical miles of Mexico in the Eastern Polygon in accordance with the Convention and the Scientific and Technical Guidelines of the Commission on the Limits of the Continental Shelf (CLCS/11; CLCS/11/Corr. 1; CLCS/11/Add. 1; CLCS/11/Add. 1/Corr. 1).

2. JUSTIFICATION FOR THE UPDATE OF THE OUTER LIMITS OF THE CONTINENTAL SHELF OF MEXICO IN THE EASTERN POLYGON OF THE GULF OF MEXICO

On 19 December 2011, Mexico made a Submission to the Commission in respect of the Eastern Polygon in the Gulf of Mexico (2011 Submission), pursuant to article 76, paragraph 8, of the Convention. The 2011 Submission was presented by a Mexican delegation to the plenary of the Commission at its headquarters on 12 April 2012.

At its twenty-ninth session, the Commission decided that the 2011 Submission would be addressed by a subcommission to be established in accordance with rule 51, paragraph 4^{ter} of the Rules of Procedure of the Commission on the Limits of the Continental Shelf, at a future session. The 2011 Submission was next in line for consideration as queued in the order in which it was received (CLCS/74).

More than a decade after its submission, Mexico updates it in light of the treaties signed with Cuba and the United States in 2017 on the delimitation of maritime boundaries in the Eastern Gulf of Mexico. This update aligns with Article 9 of Annex II of the Convention and the conclusions outlined in Commission document CLCS/46.

3. THE OUTER LIMIT OF THE CONTINENTAL SHELF IN THE EASTERN POLYGON

The Convention offers two complementary provisions designed to provide the definition of the continental margin and the breadth of its outer limit. The first provision, contained in paragraph 3 of article 76, provides its definition:

The continental margin comprises the submerged prolongation of the land mass of the coastal State, and consists of the sea-bed and subsoil of the shelf, the slope and the rise. It does not include the deep ocean floor with its oceanic ridges or the subsoil thereof.

The second provision, contained in paragraph 4 (a) (i) and (ii), subject to paragraphs 5 and 6 of article 76, determines the position of the outer limit of the continental margin by means of a complex formula based on four rules. Two of these rules are affirmative and the remaining two are negative. The two positive rules, herein referred to as *formulae*, are connected through an inclusive disjunction:

- (i) *a line delineated in accordance with paragraph 7 by reference to the outermost fixed points at each of which the thickness of sedimentary rocks is at least 1 per cent of the shortest distance from such point to the foot of the continental slope; or*
- (ii) *a line delineated in accordance with paragraph 7 by reference to fixed points not more than 60 nautical miles from the foot of the slope.*

The use of a disjunction between the two *formulae* above implies that it is sufficient that one formula line extends beyond 200 nautical miles in order to ensure the determination of an outer limit of the continental shelf beyond this distance. Thus, the limit of the continental shelf beyond 200 nautical miles can be extended up to a line delineated by reference to fixed points where sediment thickness is at least 1% from the shortest distance to the foot of the continental slope, or to a line delineated by reference to fixed points at a distance of 60 nautical miles from the foot of the continental slope, whichever is furthest from the baselines from which the breadth of the territorial sea is measured.

The use of an inclusive disjunction also implies that when both *formulae* lines are used, their outer envelope determines the maximum potential extent of entitlement over the continental shelf by a coastal State. If any portion of this outer envelope extends beyond 200 nautical miles, the test of appurtenance would be satisfied and a coastal State would be in a position to apply the full range of provisions contained in paragraphs 4 to 6 to determine the outer limits of the continental shelf extended beyond 200 nautical miles.

The determination of the outer limits is an essential procedure of the implementation of article 76. The outer envelope of the 1% sediment thickness and the foot of the slope plus 60 nautical miles lines *formulae* is used once again in this procedure. But it is still subject to spatial constraints in order to produce the determination of the outer limits of the continental shelf.

The extent of the outer envelope formed by the lines derived from the two *formulae* is restricted by a line derived from the two lines, defined by the Commission as constraints. According to paragraph 5, the simultaneous application of these two constraints defines the outer limit beyond which the continental shelf cannot be extended:

The fixed points comprising the line of the outer limits of the continental shelf on the seabed, drawn in accordance with paragraph 4 (a) (i) and (ii), either shall not exceed 350 nautical miles from the baselines from which the breadth of the territorial sea is measured or shall not exceed 100 nautical miles from the 2,500 metre isobath, which is a line connecting the depth of 2,500 metres.

The outer limit of the continental shelf beyond 200 nautical miles in the Eastern Polygon is determined under the above provisions by the application of a single formula provided by the foot of the continental slope and its outer envelope line determined at a distance 60 nautical miles. This formula line satisfies the constraint provided by the 350 nautical miles line and constraint given by the 2,500 metres isobath and its outer envelope determined at a distance of 100 nautical miles. The formula line defined by the percentage of sediment thickness to the shortest distance to the foot of the continental slope was not applied to determine the outer limit of the continental shelf.

3.1 THE FOOT OF THE CONTINENTAL SLOPE PLUS 60 M FORMULA

Bathymetric and morphological information was assembled in order to demonstrate that the seabed and subsoil of the submarine areas that extend beyond the territorial sea to the outer edge

of the continental margin are the natural prolongation of the land territory of Mexico (Article 76, Paragraph 1). Bathymetric surveys were conducted and morphological criteria were implemented to demonstrate the legal entitlement of Mexico to extend the outer limits of the continental shelf beyond 200 nautical miles and to determine the coordinates of these limits.

The geodetic coordinates of the foot of the slope points were determined by means of morphological criteria as the points of maximum change in the gradient at its base. The distance formula was implemented by means of the method of envelopes of arcs in accordance with paragraph 7 by reference to fixed points not more than 60 nautical miles from the foot of the continental slope (Article 76, Paragraph 4 (ii)). These points define the outer limit of the continental shelf of Mexico beyond 200 nautical miles (Figure 2).

3.2 THE 350 M CONSTRAINT

The extent of the outer envelope formed by the lines derived from the two *formulae* is restricted by a line derived from the two lines, defined by the Commission as constraints. According to paragraph 5 of article 76, the simultaneous application of these two constraints defines the outer limit beyond which the continental shelf cannot be extended:

The fixed points comprising the line of the outer limits of the continental shelf on the seabed, drawn in accordance with paragraph 4 (a) (i) and (ii), either shall not exceed 350 nautical miles from the baselines from which the breadth of the territorial sea is measured or shall not exceed 100 nautical miles from the 2,500 metre isobath, which is a line connecting the depth of 2,500 metres.

Geodetic baseline information was collected to determine the location of the constraint line at a distance of 350 nautical miles from the baselines from which the breadth of the territorial sea is measured in the Eastern Polygon. This constraint is satisfied by the points which define the outer limit of the continental shelf of Mexico beyond 200 nautical miles.

3.3 THE OUTER LIMIT OF THE CONTINENTAL SHELF IN ACCORDANCE WITH THE RULES OF ARTICLE 76

Figure 1.3 shows the outer limit of the continental shelf beyond 200 nautical miles in the Eastern Polygon. The endpoints of this limit are deliberately set short of the outer limits of the exclusive economic of other States in the region. Table 1 lists the coordinates of the turning points which define this outer limit.

Outer Limit of the continental shelf	Latitude N	Longitude W
1	25.6718082029677°	86.4714001652920°
2	25.6752993832251°	86.4805884706068°
3	25.6787148960934°	86.4898116061373°
4	25.6820544584353°	86.4990688102729°
5	25.6853177933852°	86.5083593183804°
6	25.6885046303736°	86.5176823628697°
7	25.6916147051512°	86.5270371732618°
8	25.6946477598126°	86.5364229762559°
9	25.6976035428191°	86.5458389957976°
10	25.7004818090209°	86.5552844531463°
11	25.7032823196791°	86.5647585669442°
12	25.7060048424872°	86.5742605532849°
13	25.7086491515913°	86.5837896257819°
14	25.7112150276104°	86.5933449956389°
15	25.7137022576562°	86.6029258717183°
16	25.7161106353517°	86.6125314606113°
17	25.7184399608500°	86.6221609667082°
18	25.7206900408516°	86.6318135922689°
19	25.7228606886223°	86.6414885374930°
20	25.7249517240091°	86.6511850005905°
21	25.7269629734571°	86.6609021778534°

Table 1: List of coordinates of the turning points that define the outer limit of the continental shelf beyond 200 nautical miles at distances not exceeding 60 nautical miles.

Outer Limit of the continental shelf	Latitude N	Longitude W
22	25.7288942700243°	86.6706392637265°
23	25.7307454533969°	86.6803954508790°
24	25.7325163699036°	86.6901699302763°
25	25.7342068725290°	86.6999618912514°
26	25.7358168209273°	86.7097705215775°
27	25.7373460814342°	86.7195950075399°
28	25.7387945270794°	86.7294345340084°
29	25.7401620375975°	86.7392882845098°
30	25.7414484994681°	86.7491554412879°
31	25.7414484994681°	86.7491554412879°
32	25.7455922585147°	86.7575002976198°
33	25.7496704440590°	86.7658847318329°
34	25.7536827481746°	86.7743081153619°
35	25.7576288680317°	86.7827698163791°
36	25.7615085057645°	86.7912691999701°
37	25.7653213684952°	86.7998056281832°
38	25.7690671683583°	86.8083784600800°
39	25.7727456225231°	86.8169870517856°
40	25.7763564532170°	86.8256307565397°
41	25.7798993878782°	86.8343089246578°
42	25.7798993878782°	86.8343089246578°
43	25.7855384687132°	86.8419626809608°
44	25.7911152001628°	86.8496723266709°
45	25.7966291309835°	86.8574372462953°
46	25.8020798151261°	86.8652568194034°
47	25.8074668115946°	86.8731304208803°
48	25.8127896844841°	86.8810574209765°
49	25.8180480030183°	86.8890371853602°
50	25.8232413415863°	86.8970690751691°
51	25.8283692797792°	86.9051524470622°

Table 1: (cont.) List of coordinates of the turning points that define the outer limit of the continental shelf beyond 200 nautical miles at distances not exceeding 60 nautical miles.

Outer Limit of the continental shelf	Latitude N	Longitude W
52	25.8334314024263°	86.9132866532735°
53	25.8384272996307°	86.9214710416645°
54	25.8433565668049°	86.9297049557786°
55	25.8482188047054°	86.9379877348953°
56	25.8530136194669°	86.9463187140844°
57	25.8577406226366°	86.9546972242617°
58	25.8623994312078°	86.9631225922443°
59	25.8669896676524°	86.9715941408068°
60	25.8715109599541°	86.9801111887375°
61	25.8759629416402°	86.9886730508957°
62	25.8803452518132°	86.9972790382687°
63	25.8846575351826°	87.0059284580298°
64	25.8888994420947°	87.0146206135960°
65	25.8930706285638°	87.0233548046869°
66	25.8971707563013°	87.0321303273840°
67	25.9011994927455°	87.0409464741891°
68	25.9051565110900°	87.0498025340848°
69	25.9090414903123°	87.0586977925948°
70	25.9128541152019°	87.0676315318434°
71	25.9165940763870°	87.0766030306174°
72	25.9202610703619°	87.0856115644268°
73	25.9238547995131°	87.0946564055664°
74	25.9273749721456°	87.1037368231781°
75	25.9308213025074°	87.1128520833129°
76	25.9341935108154°	87.1220014489936°
77	25.9374913232790°	87.1311841802776°
78	25.9407144721240°	87.1403995343206°
79	25.9438626956165°	87.1496467654399°
80	25.9469357380850°	87.1589251251784°
81	25.9499333499429°	87.1682338623688°

Table 1: (cont.) List of coordinates of the turning points that define the outer limit of the continental shelf beyond 200 nautical miles at distances not exceeding 60 nautical miles.

Outer Limit of the continental shelf	Latitude N	Longitude W
82	25.9528552877107°	87.1775722231981°
83	25.9557013140363°	87.1869394512728°
84	25.9584711977169°	87.1963347876835°
85	25.9611647137180°	87.2057574710705°
86	25.9637816431938°	87.2152067376896°
87	25.9663217735062°	87.2246818214778°
88	25.9687848982431°	87.2341819541198°
89	25.9711708172386°	87.2437063650974°
90	25.9711708172386°	87.2437063650974°
91	25.9739081666169°	87.2532137548500°
92	25.9765675092903°	87.2627484206496°
93	25.9791486250232°	87.2723095747141°
94	25.9816513000456°	87.2818964268857°
95	25.9840753270702°	87.2915081847215°
96	25.9864205053103°	87.3011440535621°
97	25.9886866404984°	87.3108032366030°
98	25.9908735449030°	87.3204849349638°
99	25.9929810373455°	87.3301883477596°
100	25.9950089432165°	87.3399126721720°
101	25.9969570944911°	87.3496571035193°
102	25.9988253297440°	87.3594208353288°
103	26.0006134941641°	87.3692030594074°

Table 1: (cont.) List of coordinates of the turning points that define the outer limit of the continental shelf beyond 200 nautical miles at distances not exceeding 60 nautical miles.

3.4 THE OUTER LIMIT OF THE CONTINENTAL SHELF CONSIDERING THE TREATIES SIGNED WITH CUBA AND THE UNITED STATES

Considering the treaties signed with Cuba and the United States in 2017, the points of the outer limit of the continental shelf of Mexico do not extend beyond the boundary established in the

bilateral treaty in force with Cuba, nor beyond the delimitation described in the treaty with the United States.

Figure 1.4 shows the outer limit of the continental shelf beyond 200 nautical miles in the Eastern Polygon of the Gulf of Mexico considering the treaties signed with Cuba and the United States. Table 2 lists the geodetic coordinates of the outer limit of the continental shelf in the Eastern Polygon considering the treaties signed with Cuba and the United States.

Outer Limit of the continental shelf	Latitude N	Longitude W
1	24.9417361111111°	86.9379444444444°
2	25.1828611111111°	87.0201027777778°
3	25.4297000000000°	87.0151250000000°
4	25.4879000000000°	87.0137333333333°
5	25.5902750000000°	87.0513972222222°
6	25.6138305555556°	87.3251972222222°
7	25.6674611111111°	87.9525666666667°
8	25.6853972222222°	88.1717166666667°
9	25.6983833333333°	88.3340666666667°
10	25.6994166666667°	88.3848944444444°

Table 2: List of coordinates of the turning points that define the outer limit of the continental shelf beyond 200 nautical miles in the Eastern Polygon, considering the treaties signed with Cuba and the United States.

4. NAMES OF MEMBERS OF THE CLCS WHO PROVIDED ADVICE

In the preparation of its 2011 submission, Mexico benefited from the advice of Mr. Galo Carrera-Hurtado, who was serving as a member of the Commission on the Limits of the Continental Shelf at the time. For the preparation of this update, however, Mexico has not received guidance from any member of the Commission.

5. ABSENCE OF DISPUTES

The maritime boundary between Mexico and Cuba beyond 200 nautical miles in the continental shelf of the Eastern Polygon was formally established in the Treaty of 18 January 2017, which entered into force on 17 July 2018.

On 18 January 2017, Mexico and the United States signed a treaty to delimit the maritime boundary of the continental shelf in the Eastern Gulf of Mexico, which has not yet entered into force. Notably, the maritime boundary outlined in the treaty corresponds to the limits unilaterally announced by the United States on 19 December 2023.

In the Eastern Polygon there are no disputes regarding delimitation of maritime boundaries.

6. MEXICAN INSTITUTIONS RESPONSIBLE FOR THE PREPARATION OF THIS PARTIAL SUBMISSION

The Mexican institutions responsible for the preparation of this submission to the Commission on the Limits of the Continental Shelf are, in alphabetical order:

- Mexican Geological Survey (SGM)
- Ministry of Foreign Affairs (SRE)
- Ministry of the Navy (SEMAR)
- National Institute of Statistics and Geography (INEGI)
- Petróleos Mexicanos (PEMEX)

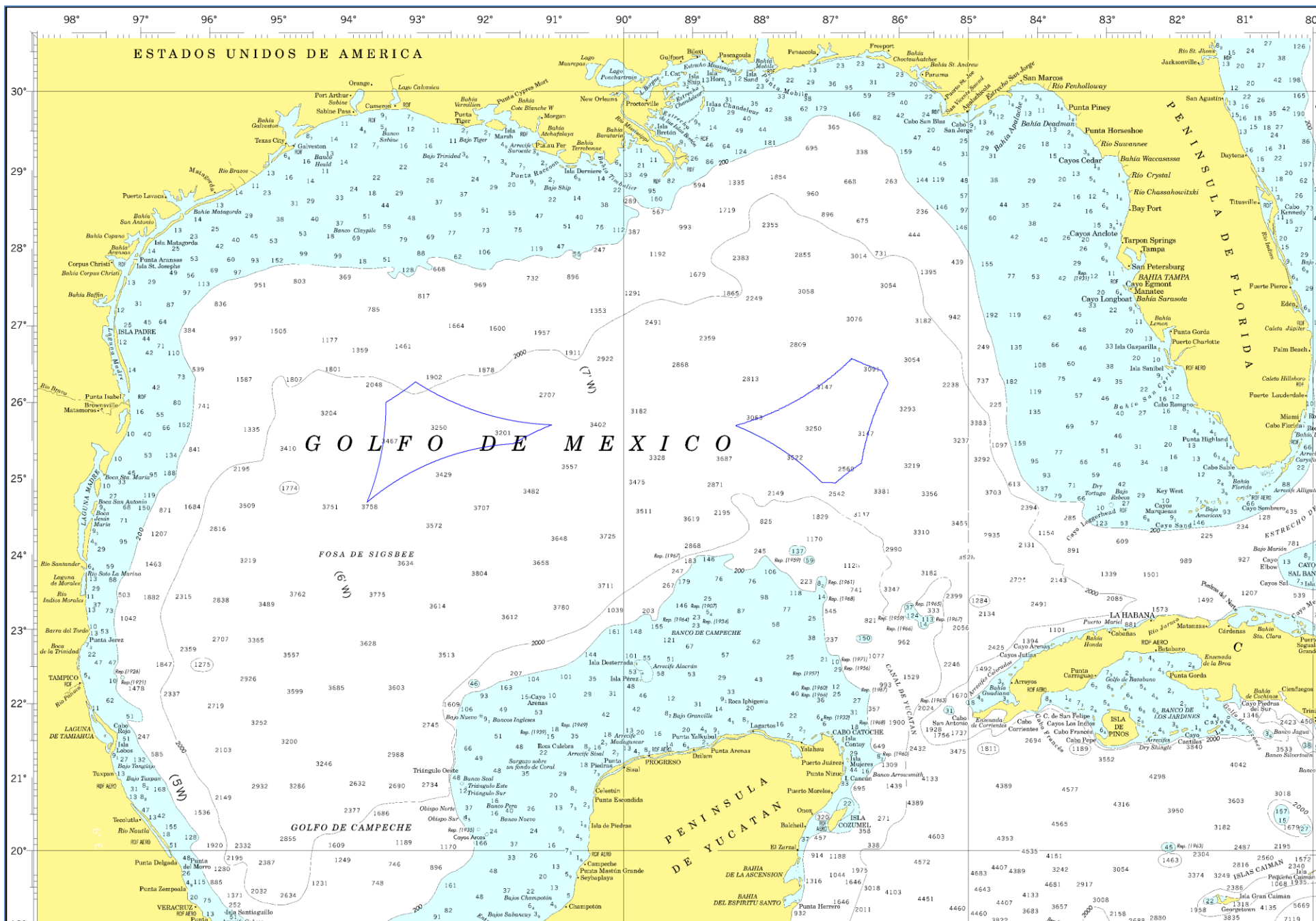


Figure 1.1: The Western and Eastern Polygons beyond 200 M from which the breadth of the territorial sea is measured in the Gulf of Mexico.

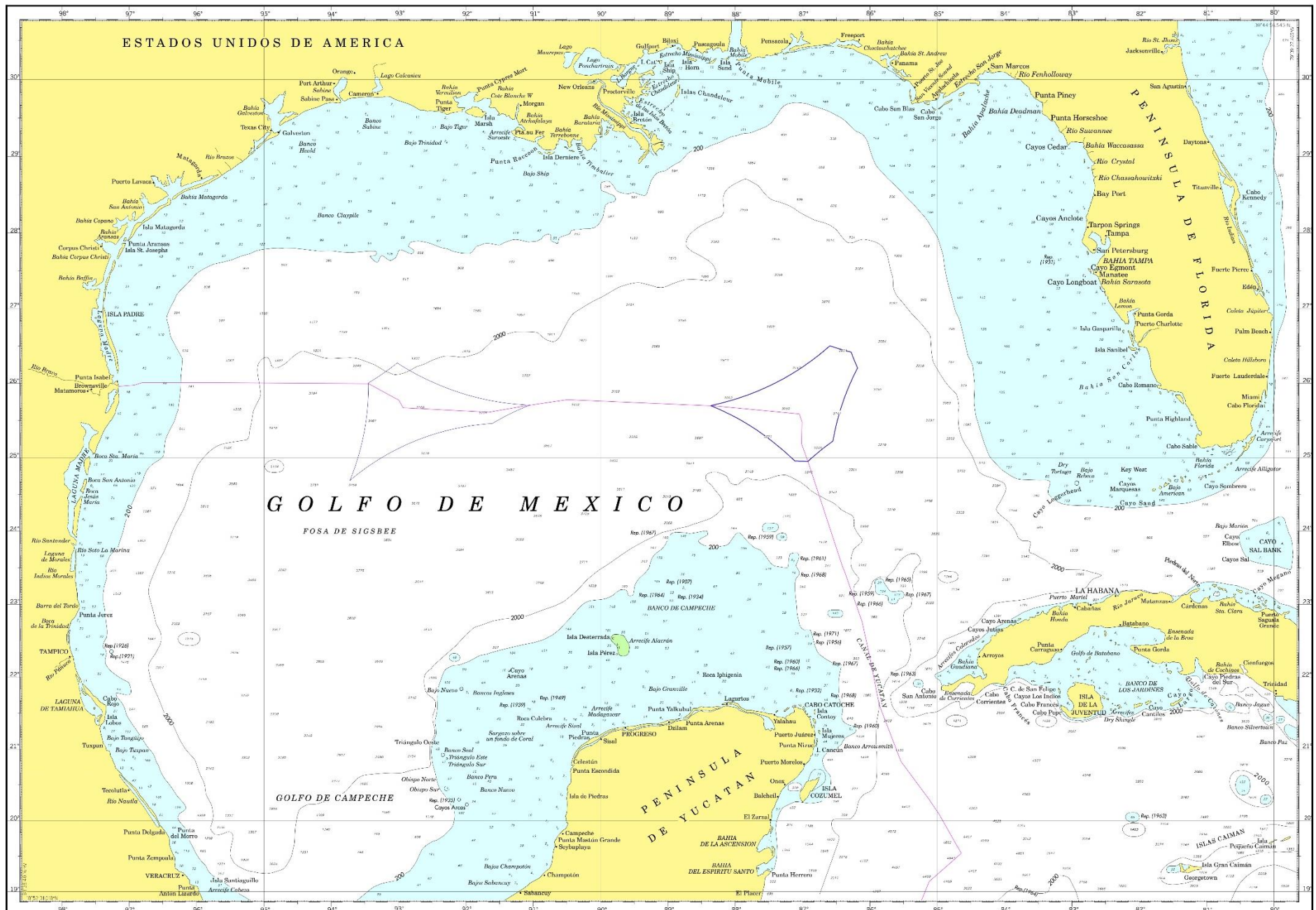


Figure 1.2: International maritime boundaries established in the Agreements between Mexico and Cuba in 1976 and 2017, and Mexico and the United States in 1978 and 2000, as well as the boundary reflected in the treaty signed by Mexico and the United States in 2017.

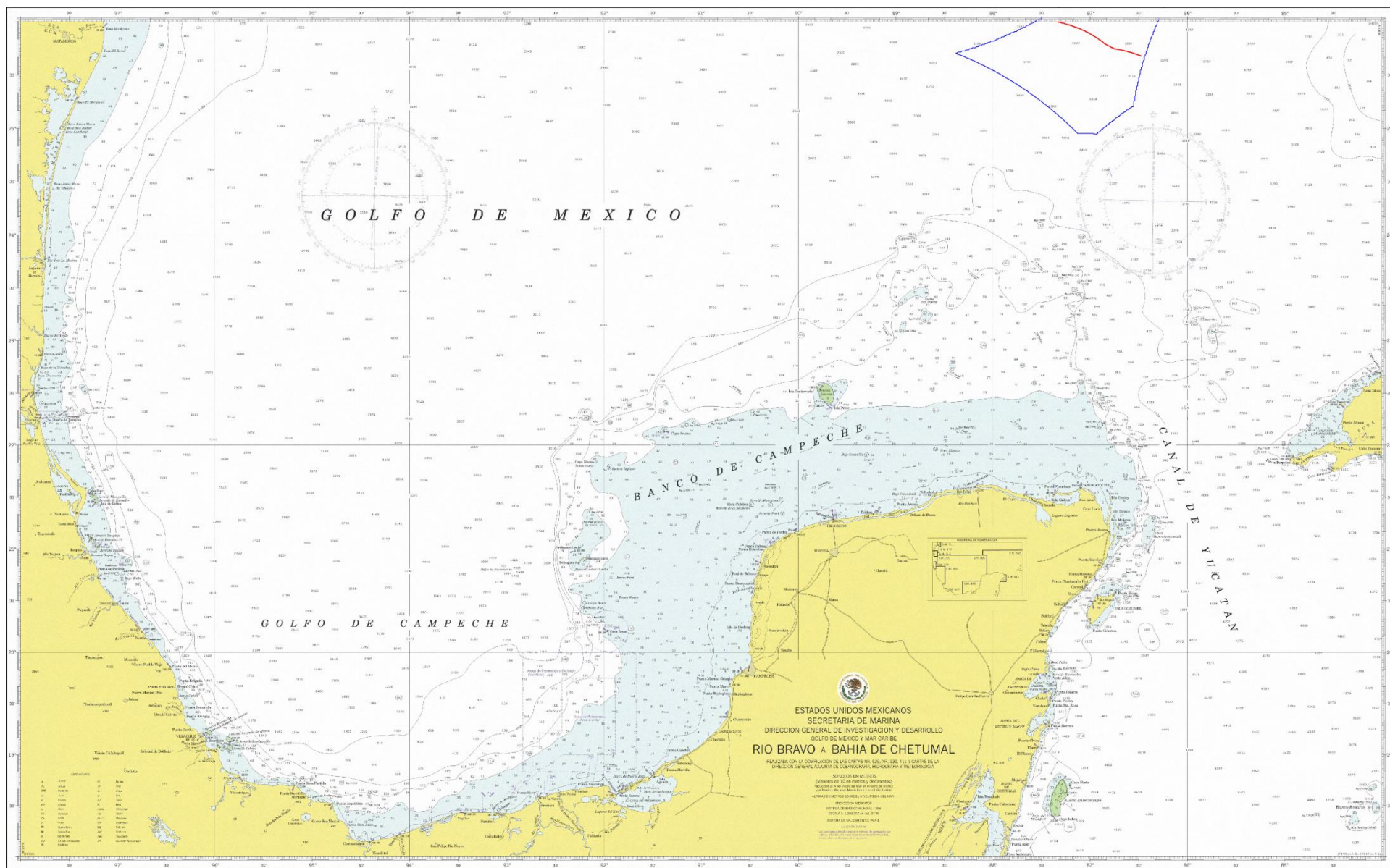


Figure 1.3: The outer limit of the continental shelf beyond 200 nautical miles in the Eastern Polygon.

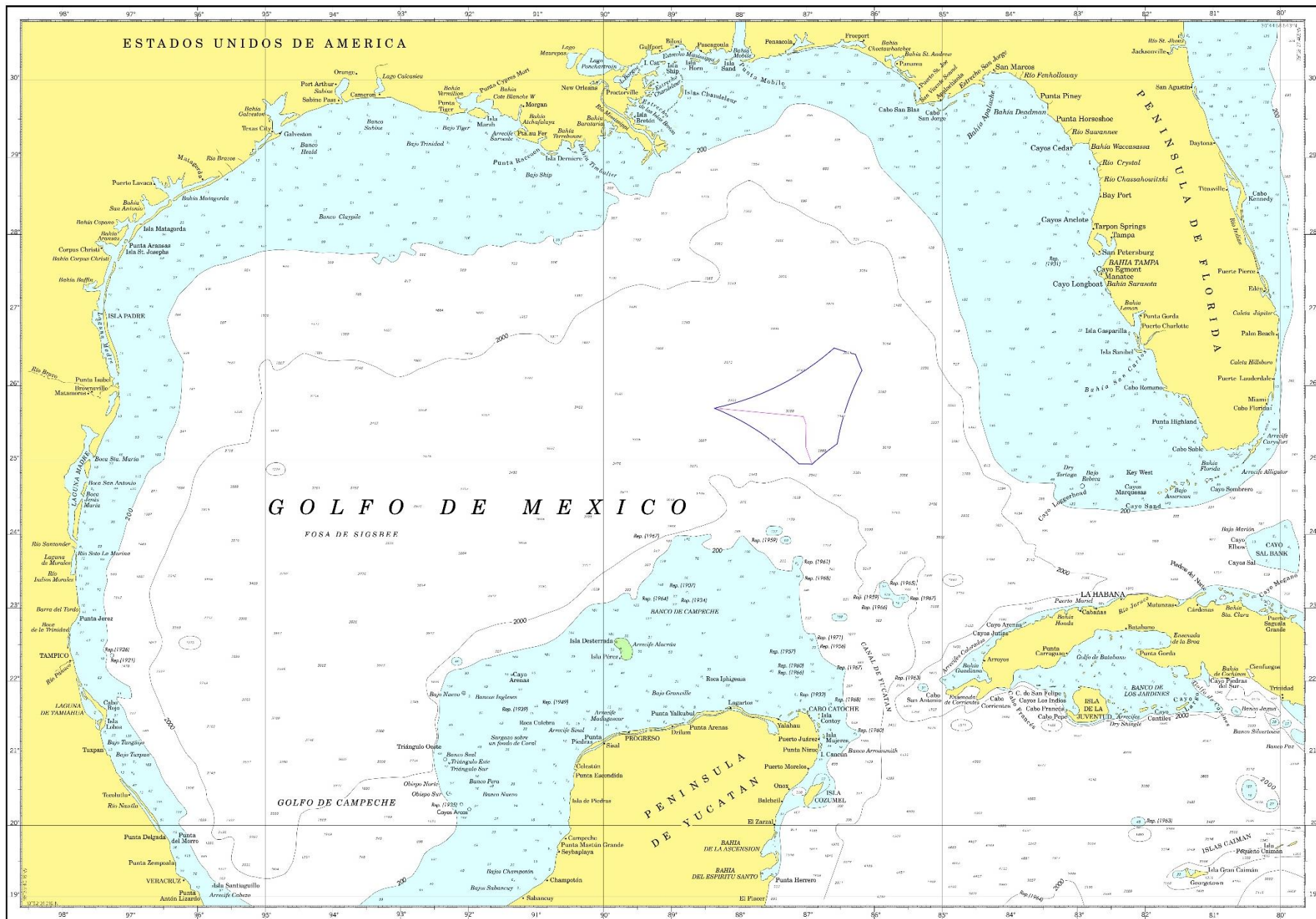


Figure 1.4: The outer limit of the continental shelf beyond 200 nautical miles in the Eastern Polygon of the Gulf of Mexico considering the treaties signed with Cuba and the United States.