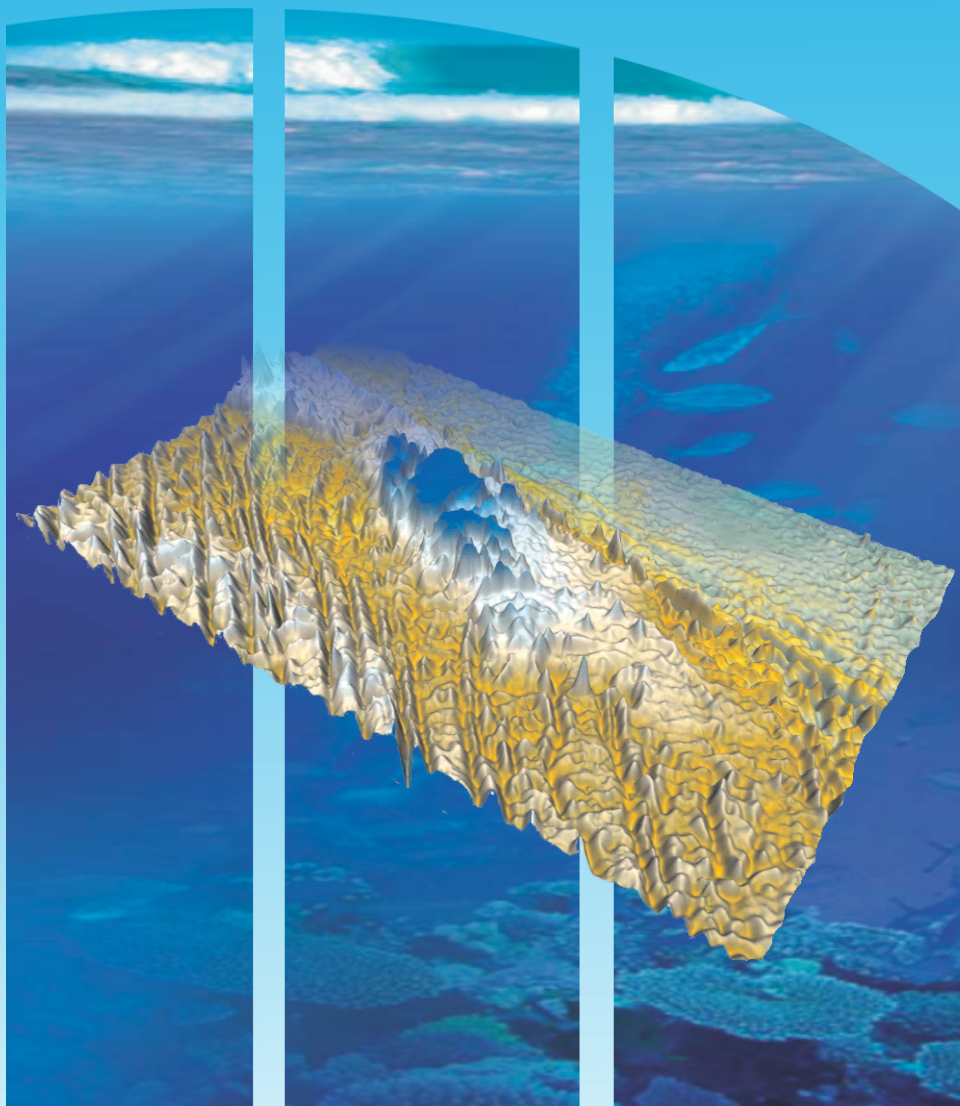




Republic of Mauritius

United Nations Convention on the Law of the Sea

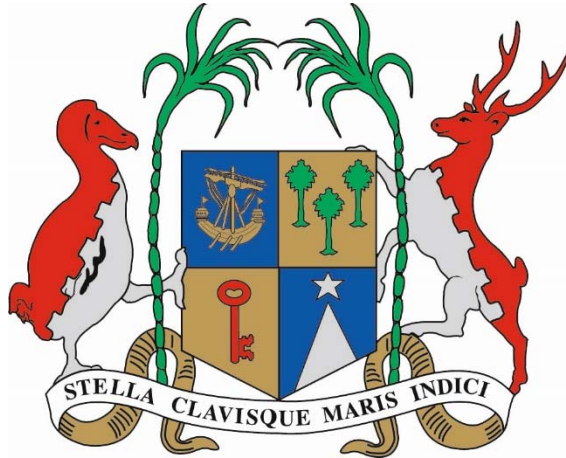
**Submission by the Republic of Mauritius to the
Commission on the Limits of the Continental Shelf concerning the
Southern Chagos Archipelago Region**



Executive Summary

**MCSS-ES-DOC
March 2019**

REPUBLIC OF MAURITIUS



Submission by the Republic of Mauritius to the Commission on the Limits of the Continental Shelf concerning the Southern Chagos Archipelago Region

EXECUTIVE SUMMARY



PREFACE

This Submission was prepared by the following Ministries and Statutory Corporations of the Government of the Republic of Mauritius:

Prime Minister's Office

Department for Continental Shelf and Maritime Zones Administration & Exploration, Ministry of Defence and Rodrigues

Permanent Mission of the Republic of Mauritius to the United Nations, Ministry of Foreign Affairs, Regional Integration & International Trade

Attorney-General's Office

The following acted as advisors to the Government of the Republic of Mauritius in the preparation of this submission:

Mr Harald Brekke, former Member of the Commission on the Limits of the Continental Shelf

Dr Andre Chan Chim Yuk, former Member of the Commission on the Limits of the Continental Shelf



TABLE OF CONTENTS

1.	Introduction	5
2.	Outer Limits of the Continental Shelf in the Southern Chagos Archipelago Region	7
3.	Maps and Coordinates	8
4.	Provisions of Article 76 Invoked	10
5.	Commission Members Who Provided Advice on the Submission	10
6.	The Unlawful Administration of the Chagos Archipelago as a Colony of the United Kingdom	10
7.	Overview of the Continental Shelf in the Southern Chagos Archipelago Region	12
8.	Note of Authentication	14
9.	Annexes	16



ANNEXES

Annex 1: Table Listing the Fixed Points Defining the Outer Limits of the Continental Shelf in the Southern Chagos Archipelago Region (Decimal Degrees)

MCSS-ES-ANNEX 1

Annex 2: Table Listing the Fixed Points Defining the Outer Limits of the Continental Shelf in the Southern Chagos Archipelago Region (Degrees, Minutes and Seconds)

MCSS-ES-ANNEX 2

MAPS

(A0 Executive Summary map supplied separately)

The Outer Limits of the Continental Shelf
in the Southern Chagos Archipelago Region

MCSS-ES-MAP-1

The Outer Limits of the Continental Shelf
in the Southern Chagos Archipelago Region
displaying the provisions of Article 76 invoked.

MCSS-ES-MAP-2



1. INTRODUCTION

- 1-1** This Executive Summary has been prepared as part of the Submission by the Republic of Mauritius to the Commission on the Limits of the Continental Shelf ('the Commission') pursuant to paragraph 8 of Article 76 of the 1982 United Nations Convention on the Law of the Sea ('the Convention') in support of the establishment by the Republic of Mauritius of the outer limits of the continental shelf that lie beyond 200 nautical miles (M) from the baselines from which the breadth of the territorial sea of the Republic of Mauritius is measured in the Southern Chagos Archipelago Region.
- 1-2** The Republic of Mauritius consists of a group of islands in the Indian Ocean. The main Island of Mauritius is located at longitude 57°30' east, and latitude 20°00' south, approximately 900km east of Madagascar and is part of the Mascarene Islands. The total land area of the Republic of Mauritius is approximately 2,000km². Under the Constitution of Mauritius the territory of Mauritius includes, in addition to the main island, the islands of Cargados Carajos (the St Brandon Group of 16 Islands and Islets) located some 402km north of the main Island of Mauritius, Rodrigues Island located 560km north-east, the Agalega Islands located 933km north, Tromelin located north-west and the Chagos Archipelago located at 06°26' south 72°00' east, approximately 2200km north-east of the main Island of Mauritius.
- 1-3** The Republic of Mauritius is a party to the Convention, which it signed on the day it was opened for signature on 10 December 1982, and subsequently ratified on 4 November 1994. The Maritime Zones Act 2005 provides that the provisions of the Convention have the force of law in the Republic of Mauritius, including the Chagos Archipelago, and establishes maritime zones in accordance with the requirements of the Convention, including provisions defining the outer limits of the continental shelf.



- 1-4** Under Article 4 of Annex II to the Convention, as supplemented by the decisions of the Eleventh (SPLOS/72) and Eighteenth (SPLOS/183) meetings of the State Parties to the Convention respectively regarding the ten-year period established by Article 4 of Annex II to the Convention, a coastal State for which the Convention entered into force before 13 May 1999 is required to submit particulars of the outer limits of the continental shelf to the Commission by 13 May 2009. In accordance with the decision of SPLOS/183, the Republic of Mauritius submitted Preliminary Information concerning the Extended Continental Shelf in the Chagos Archipelago Region on 6 May 2009 and indicated that it would make a submission in 2012. Subsequently, the Republic of Mauritius requested additional time to make its submission.
- 1-5** This Submission is a partial submission concerning only the continental shelf in the Southern Chagos Archipelago Region and is one of a number of partial submissions made by the Republic of Mauritius to date. The Republic of Mauritius also intends to make another partial submission concerning the continental shelf in the Northern Chagos Archipelago Region in due course. However since there is a likely overlap with the claim for an extended continental shelf submitted by the Republic of Maldives (MAL-ES-DOC) and the representations made by the Republic of Mauritius (Note No: 10887/10 and Note No. 11031/11), the Republic of Mauritius is envisaging bilateral talks with the Republic of Maldives with a view to reaching an agreement both in respect of the maritime delimitation and the extended continental shelf.
- 1-6** The Republic of Mauritius has for the purposes of preparing this Submission, applied the relevant provisions of Article 76 of the Convention, together with the Rules of Procedure of the Commission on the Limits of the Continental Shelf (CLCS/40/Rev.1) adopted by the Commission on 17 April 2008 ('Rules of Procedure') and, the recommendations contained in the Scientific and Technical Guidelines of the Commission on the Limits of the Continental Shelf (CLCS/11) adopted by the Commission on 13 May 1999 ('the Guidelines').



1-7 In accordance with the specifications of the Commission set out in Annex III to the Rules of Procedure and paragraphs 9.1.3 to 9.1.6 of the Guidelines, this Submission consists of three separate parts comprising an Executive Summary, a core analytical and descriptive part of the submission ('the Main Body'), and a part containing all required supporting scientific and technical data arranged in a series of annexes ('supporting scientific and technical data').

2. OUTER LIMITS OF THE CONTINENTAL SHELF IN THE SOUTHERN CHAGOS ARCHIPELAGO REGION

2-1 As provided for under paragraph 1 of Article 76 of the Convention, the Republic of Mauritius has a continental shelf comprising the seabed and subsoil of the submarine areas that extends beyond its territorial sea throughout the natural prolongation of its land territory to the outer edge of the continental margin, up to the limits provided for in paragraphs 4 to 6 of Article 76 of the Convention or, to a distance of 200M from the territorial sea baselines where the outer edge of the continental margin does not extend up to that distance.

2-2 Paragraphs 4 to 6 of Article 76 of the Convention set out the manner in which a coastal State may establish the outer edge of its continental margin and its continental shelf, wherever that margin extends beyond 200M measured from the territorial sea baselines.

2-3 As set out in paragraph 7 of Article 76 of the Convention, a coastal State is to delineate the outer limits of the continental shelf by straight lines not exceeding 60M in length, connecting fixed points defined by coordinates of latitude and longitude.

2-4 The data submitted by the Republic of Mauritius in support of this Submission establish that the outer edge of the continental margin representing the natural prolongation of the relevant land territory in the Chagos Archipelago (Egmont and Diego Garcia Islands) extends beyond 200M measured from the

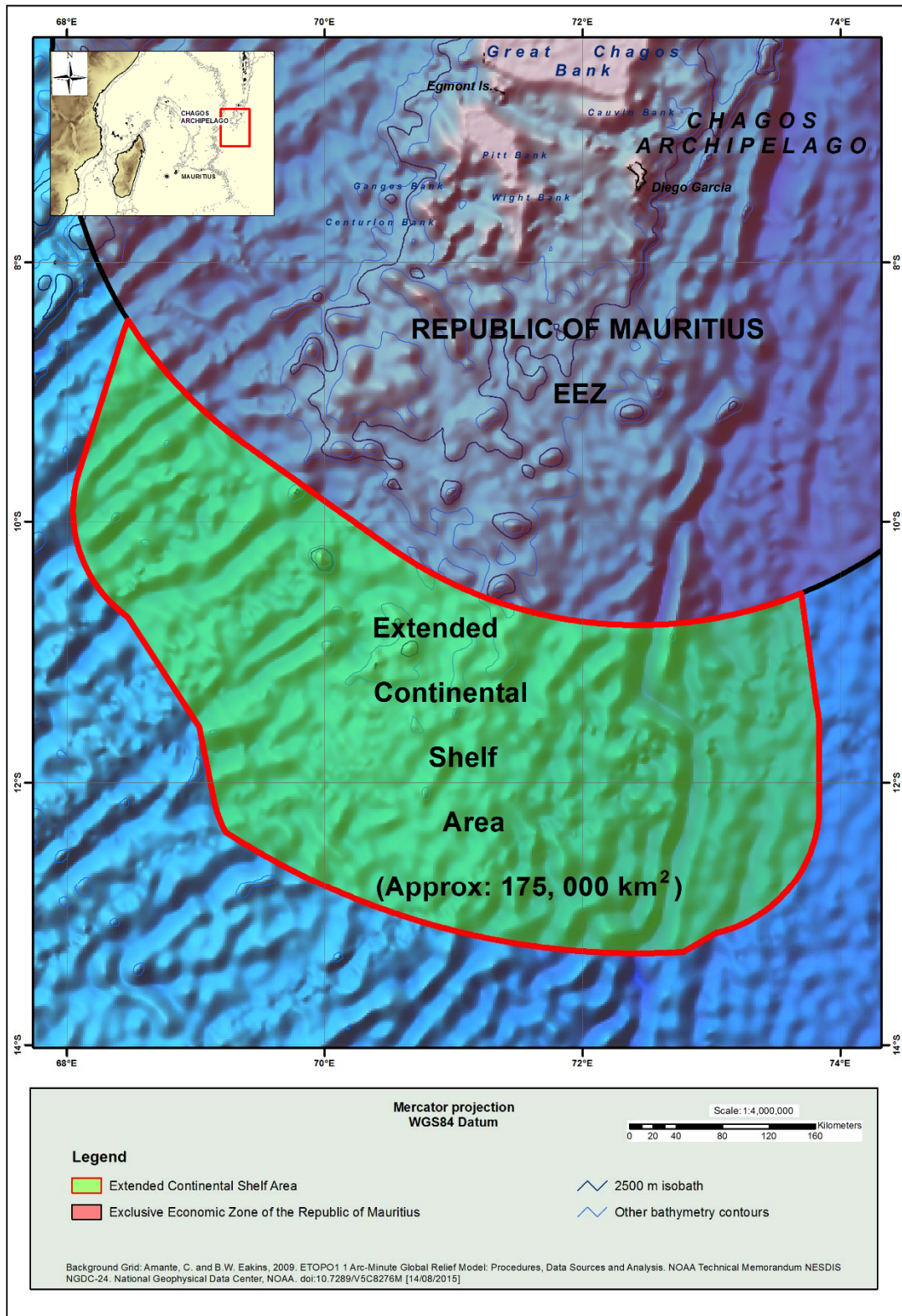


archipelagic baselines established by the Republic of Mauritius in accordance with Article 47 of the Convention.

- 2-5** Section 7 of this Executive Summary provides an overview of the extended continental shelf in the Southern Chagos Archipelago Region determined by the Republic of Mauritius, including an outline of the Article 76 fixed points used to construct the outer limit line in this region.

3. MAPS AND COORDINATES

- 3-1** Two maps are included in this Executive Summary as **MCSS-ES-MAP-1** and **MCSS-ES-MAP-2** respectively. The first map provides an overview of the area of extended continental shelf in the Southern Chagos Archipelago Region. The second map provides an overview of the area of extended continental shelf, together with the location of the Article 76 fixed points that define the outer limit of the continental shelf. These maps are also provided to scale in A0-size.
- 3-2** The lists of coordinates of the Article 76 fixed points that define the outer limit of the continental shelf submitted by the Republic of Mauritius are supplied in two annexes.
- 3-3** Annex 1 (**MCSS-ES-ANNEX 1**) lists the fixed points defining the outer limit of the extended continental shelf in decimal degrees. Annex 2 (**MCSS-ES-ANNEX 2**) lists the same points in degrees, minutes and seconds. The provisions of Article 76 invoked to define each fixed point, as well as the distance between adjacent points, are also specified in both annexes. Wherever there is discrepancy between the two formats of the coordinates for a particular Article 76 fixed point, the Republic of Mauritius relies upon the coordinates farthest seaward from its archipelagic baselines, subject to compliance with the requirements of the relevant provisions of Article 76 of the Convention.



MCSS-ES-MAP-1 The Outer Limits of the Continental Shelf in the Southern Chagos Archipelago Region.

Submission of the Republic of Mauritius concerning the Southern Chagos Archipelago Region



4. PROVISIONS OF ARTICLE 76 INVOKED

The Republic of Mauritius invokes paragraphs 4 (a)(ii), 4 (b), 6 and 7 of Article 76 of the Convention in support of this Submission concerning the continental shelf in the Southern Chagos Archipelago Region.

5. COMMISSION MEMBERS WHO PROVIDED ADVICE ON THE SUBMISSION

No current member of the Commission has assisted in the preparation of this submission. Mr Harald Brekke and Dr Andre Chan Chim Yuk, both former members of the Commission provided their expert technical advice.

6. THE UNLAWFUL ADMINISTRATION OF THE CHAGOS ARCHIPELAGO AS A COLONY OF THE UNITED KINGDOM

- 6-1** The Republic of Mauritius recalls that in the Preliminary Information it is stated that a dispute exists between the Republic of Mauritius and the United Kingdom of Great Britain and Northern Ireland with regard to the Chagos Archipelago.
- 6-2** On 22 June 2017, the United Nations General Assembly by Resolution 71/292 sought an Advisory Opinion of the International Court of Justice (ICJ) on the legal consequences of the separation of the Chagos Archipelago from Mauritius prior to its independence.
- 6-3** On 25 February 2019, the International Court of Justice delivered its Advisory Opinion, wherein, by a majority of 13-1 (with no judge expressing any dissenting view on the substance) the Court has confirmed that the Chagos Archipelago is and has always been an integral part of the Republic of Mauritius, which therefore, is the only State to have sovereignty or sovereign



rights over the Archipelago and its surrounding waters. Specifically, the Court determined that:

- At the time that the Chagos Archipelago was detached from Mauritius in 1965, it was “clearly an integral part” of Mauritius (§170).
- The detachment of the Chagos Archipelago “was not based on the free and genuine expression of the will” of the people of Mauritius (§172).
- “[A]s a result of the Chagos Archipelago’s unlawful detachment and its incorporation into a new colony, known as the BIOT, the process of decolonization of Mauritius was not lawfully completed when Mauritius acceded to independence in 1968.” (§174).
- “[I]t follows that the United Kingdom’s continued administration of the Chagos Archipelago constitutes a wrongful act entailing the international responsibility of that State”. This is “an unlawful act of a continuing character”. (§177).
- The United Kingdom “is under an obligation to bring to an end its administration of the Chagos Archipelago as rapidly as possible, thereby enabling Mauritius to complete the decolonization of its territory in a manner consistent with the right of people to self-determination.” (§178).
- All Member States of the United Nations “must co-operate with the United Nations” to put into effect the “modalities necessary for ensuring the completion of the decolonization of Mauritius” (§§179-180).



- 6-4** It follows incontrovertibly from the Court’s clear and authoritative Advisory Opinion that the United Kingdom has never had, and has today, no sovereignty or sovereign rights under the Convention in relation to the Chagos Archipelago.
- 6-5** It is noted that no objection has been raised by any State, including the United Kingdom, and no comment has been received by the United Nations Secretary General with regard to the Preliminary Information, which was made publicly available by the UN Secretary-General on the website of the Commission, in accordance with paragraph 1(d) of the decision contained in SPLOS/183. The Republic of Mauritius further notes that the area of continental shelf in this Submission is not the subject of any dispute with any opposite or adjacent State, pursuant to paragraph 2 (a) of Annex I to the Rules of Procedure.

7. OVERVIEW OF THE CONTINENTAL SHELF IN THE SOUTHERN CHAGOS ARCHIPELAGO REGION

- 7-1** The Chagos Archipelago Region (Chagos Bank) is the southern segment of the Chagos-Laccadives Ridge (CLR) and lies between 4°S and 9°S. The CLR is a slightly arcuate major elongated aseismic feature, which extends for about 2500km, approximately along the 73°E meridian, between 14°N and 9°S. A considerable length of the crest of this submarine ridge is composed of shoals, banks and coral reefs at depths less than 1500m. This submarine ridge is composed of three main segments, namely the Laccadives Islands in the north, the Maldives Islands in the middle and the Chagos Archipelago in its south, all connected by saddle-like features into a topographic continuity. The CLR is the product of the Réunion hotspot at the time of the northward motion of the Indian plate over this stationary hotspot (Duncan 1990).
- 7-2** The Chagos Ridge (the southern segment of the CLR) is bounded to the east by the Chagos Trough. The oceanic crust to the west and south of the ridge displays transform faults linked to the Central Indian Ridge spreading centre.



The Chagos Archipelago, the submerged expression of the Chagos Ridge, is an archipelago of coral islands (Sheppard & Seaward, 1999).

7-3 The Chagos Ridge is associated with submarine volcanic accumulations that resulted from the northward passage of the Indian Plate over the Reunion Hotspot. The Republic of Mauritius is of the view that the Chagos Ridge represents the submerged prolongation of the relevant landmass of the Republic of Mauritius in this area.

7-4 The outer limits of the continental shelf in the Southern Chagos Archipelago Region encloses an area of approximately (175,000km²) extending beyond 200M from the territorial sea baselines of the Republic of Mauritius and is defined by an outer limit line composed of **430** Article 76 fixed points, of which:

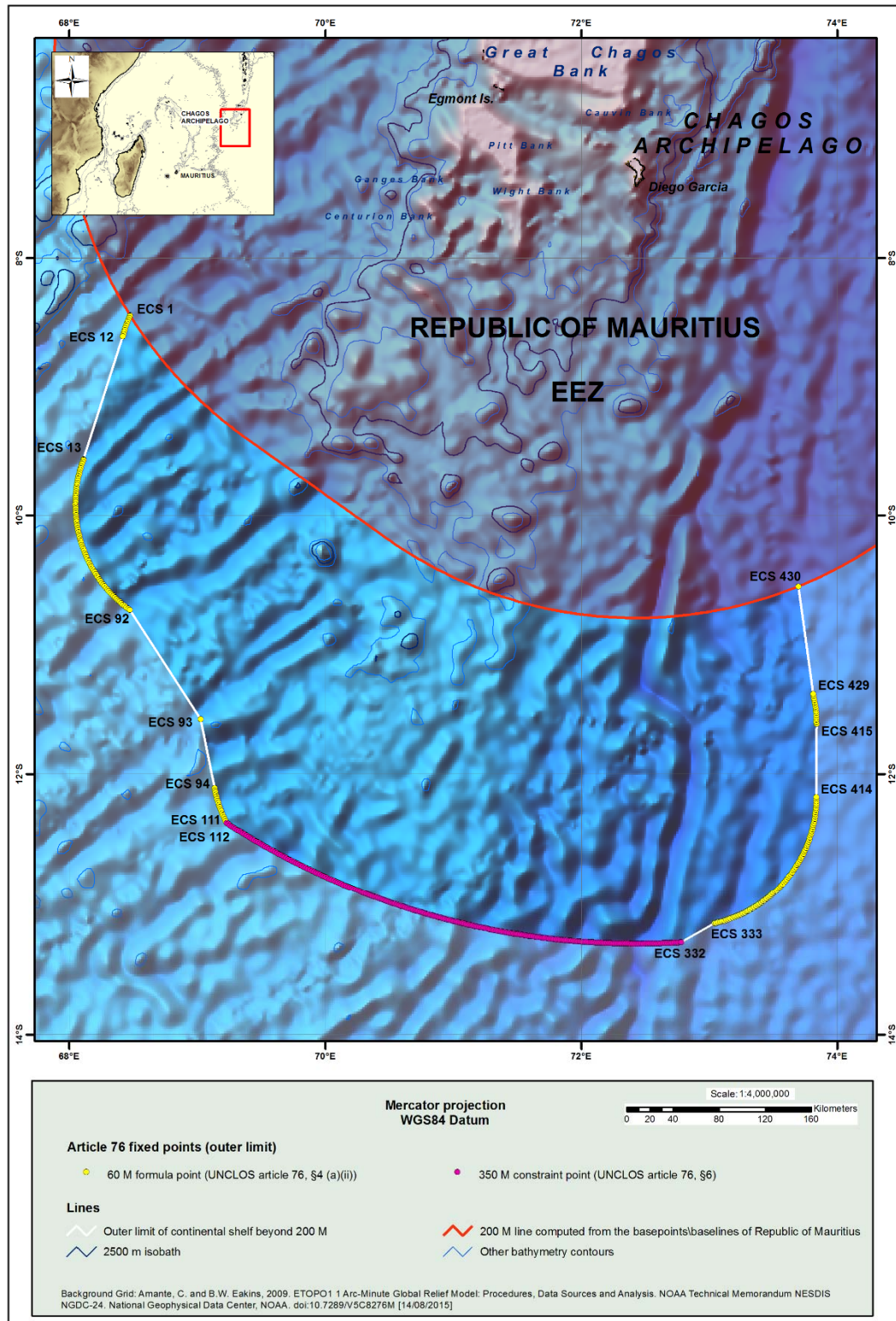
- **207** are defined by arcs 60M from the foot of the slope (Article 76, paragraph 4(a)(ii) of the Convention);
- **221** are defined by the 350M constraint line (Article 76, paragraph 6 of the Convention); and,
- **2** points (ECS 1 and ECS 430), where the outer limit of the extended continental shelf commences and terminates respectively at points located along the line 200M from the archipelagic baselines of the Republic of Mauritius in the Southern Chagos Archipelago Region.

7-5 Each successive pair of fixed points defining the outer limit of the extended continental shelf is connected by geodesics not exceeding 60M in length, drawn in accordance with paragraph 7 of Article 76 of the Convention.



8 NOTE OF AUTHENTICATION

All maps, figures, charts and databases forming part of this Submission were prepared by the Department for Continental Shelf and Maritime Zones Administration & Exploration, which is responsible for preparing such materials and for certifying their quality and reliability.



MCSS-ES-MAP-2 The Outer Limits of the Continental Shelf of the Southern Chagos Archipelago Region displaying the Provisions of Article 76 Invoked.

Submission of the Republic of Mauritius concerning the Southern Chagos Archipelago Region



MCSS-ES-ANNEX 1

Table Listing the Fixed Points Defining the Outer Limits of the Continental Shelf in the Southern Chagos Archipelago Region (Decimal Degrees)

Point ID	Longitude (decimal deg°)	Latitude (decimal deg°)	Distance (M)	Article 76 criterion
ECS 1	68.47399902	-8.44697666	0.00	60 M distance criterion / Baseline +200M
ECS 2	68.47209167	-8.45114326	0.27	60 M distance criterion
ECS 3	68.46539307	-8.46650696	1.00	60 M distance criterion
ECS 4	68.45896149	-8.48197937	1.00	60 M distance criterion
ECS 5	68.45278931	-8.49755573	1.00	60 M distance criterion
ECS 6	68.44687653	-8.51323223	1.00	60 M distance criterion
ECS 7	68.44122314	-8.52900410	1.00	60 M distance criterion
ECS 8	68.43584442	-8.54486847	1.00	60 M distance criterion
ECS 9	68.43071747	-8.56081963	1.00	60 M distance criterion
ECS 10	68.42586517	-8.57685280	1.00	60 M distance criterion
ECS 11	68.42128754	-8.59296513	1.00	60 M distance criterion
ECS 12	68.41696930	-8.60915089	1.00	60 M distance criterion
ECS 13	68.11011505	-9.56552792	59.95	60 M distance criterion
ECS 14	68.10819244	-9.57061768	0.32	60 M distance criterion
ECS 15	68.10254669	-9.58639526	1.00	60 M distance criterion
ECS 16	68.09715271	-9.60226345	1.00	60 M distance criterion
ECS 17	68.09203339	-9.61821651	1.00	60 M distance criterion
ECS 18	68.08718109	-9.63425350	1.00	60 M distance criterion
ECS 19	68.08259583	-9.65036774	1.00	60 M distance criterion
ECS 20	68.07828522	-9.66655636	1.00	60 M distance criterion
ECS 21	68.07424927	-9.68281460	1.00	60 M distance criterion
ECS 22	68.07048035	-9.69913578	1.00	60 M distance criterion
ECS 23	68.06698608	-9.71551704	1.00	60 M distance criterion
ECS 24	68.06376648	-9.73195362	1.00	60 M distance criterion
ECS 25	68.06082916	-9.74844170	1.00	60 M distance criterion
ECS 26	68.05815887	-9.76497459	1.00	60 M distance criterion
ECS 27	68.05577850	-9.78155136	1.00	60 M distance criterion
ECS 28	68.05367279	-9.79816341	1.00	60 M distance criterion
ECS 29	68.05184174	-9.81480885	1.00	60 M distance criterion
ECS 30	68.05029297	-9.83148289	1.00	60 M distance criterion
ECS 31	68.04901886	-9.84818077	1.00	60 M distance criterion
ECS 32	68.04803467	-9.86489582	1.00	60 M distance criterion
ECS 33	68.04732513	-9.88162518	1.00	60 M distance criterion



Point ID	Longitude (decimal deg°)	Latitude (decimal deg°)	Distance (M)	Article 76 criterion
ECS 34	68.04690552	-9.89836407	1.00	60 M distance criterion
ECS 35	68.04676056	-9.91510677	1.00	60 M distance criterion
ECS 36	68.04689789	-9.93185043	1.00	60 M distance criterion
ECS 37	68.04731750	-9.94858837	1.00	60 M distance criterion
ECS 38	68.04801941	-9.96531773	1.00	60 M distance criterion
ECS 39	68.04899597	-9.98203278	1.00	60 M distance criterion
ECS 40	68.05025482	-9.99873066	1.00	60 M distance criterion
ECS 41	68.05180359	-10.01540375	1.00	60 M distance criterion
ECS 42	68.05362701	-10.03205013	1.00	60 M distance criterion
ECS 43	68.05572510	-10.04866409	1.00	60 M distance criterion
ECS 44	68.05810547	-10.06524086	1.00	60 M distance criterion
ECS 45	68.06077576	-10.08177662	1.00	60 M distance criterion
ECS 46	68.06371307	-10.09826660	1.00	60 M distance criterion
ECS 47	68.06692505	-10.11470413	1.00	60 M distance criterion
ECS 48	68.07041931	-10.13108635	1.00	60 M distance criterion
ECS 49	68.07418060	-10.14740944	1.00	60 M distance criterion
ECS 50	68.07822418	-10.16366768	1.00	60 M distance criterion
ECS 51	68.08254242	-10.17985630	1.00	60 M distance criterion
ECS 52	68.08713531	-10.19597149	1.00	60 M distance criterion
ECS 53	68.09198761	-10.21200848	1.00	60 M distance criterion
ECS 54	68.09711456	-10.22796440	1.00	60 M distance criterion
ECS 55	68.10251617	-10.24383068	1.00	60 M distance criterion
ECS 56	68.10817719	-10.25960827	1.00	60 M distance criterion
ECS 57	68.11410522	-10.27528858	1.00	60 M distance criterion
ECS 58	68.12030029	-10.29086685	1.00	60 M distance criterion
ECS 59	68.12675476	-10.30634308	1.00	60 M distance criterion
ECS 60	68.13346863	-10.32171059	1.00	60 M distance criterion
ECS 61	68.14044189	-10.33696461	1.00	60 M distance criterion
ECS 62	68.14766693	-10.35210037	1.00	60 M distance criterion
ECS 63	68.15515137	-10.36711597	1.00	60 M distance criterion
ECS 64	68.16288757	-10.38200474	1.00	60 M distance criterion
ECS 65	68.17087555	-10.39676380	1.00	60 M distance criterion
ECS 66	68.17910767	-10.41139030	1.00	60 M distance criterion
ECS 67	68.18758392	-10.42587757	1.00	60 M distance criterion
ECS 68	68.19631195	-10.44022274	1.00	60 M distance criterion
ECS 69	68.20527649	-10.45442104	1.00	60 M distance criterion
ECS 70	68.21447754	-10.46846867	1.00	60 M distance criterion
ECS 71	68.22392273	-10.48236370	1.00	60 M distance criterion



Point ID	Longitude (decimal deg°)	Latitude (decimal deg°)	Distance (M)	Article 76 criterion
ECS 72	68.23358917	-10.49610043	1.00	60 M distance criterion
ECS 73	68.24349213	-10.50967598	1.00	60 M distance criterion
ECS 74	68.25362396	-10.52308750	1.00	60 M distance criterion
ECS 75	68.26398468	-10.53632832	1.00	60 M distance criterion
ECS 76	68.27456665	-10.54939461	1.00	60 M distance criterion
ECS 77	68.28536224	-10.56228638	1.00	60 M distance criterion
ECS 78	68.29637909	-10.57499695	1.00	60 M distance criterion
ECS 79	68.30760956	-10.58752346	1.00	60 M distance criterion
ECS 80	68.31905365	-10.59986401	1.00	60 M distance criterion
ECS 81	68.33069611	-10.61201096	1.00	60 M distance criterion
ECS 82	68.34254456	-10.62396526	1.00	60 M distance criterion
ECS 83	68.35459900	-10.63572216	1.00	60 M distance criterion
ECS 84	68.36684418	-10.64727688	1.00	60 M distance criterion
ECS 85	68.37928009	-10.65862942	1.00	60 M distance criterion
ECS 86	68.39191437	-10.66977310	1.00	60 M distance criterion
ECS 87	68.40473938	-10.68070889	1.00	60 M distance criterion
ECS 88	68.41774750	-10.69143105	1.00	60 M distance criterion
ECS 89	68.43093109	-10.70193577	1.00	60 M distance criterion
ECS 90	68.44428253	-10.71222115	1.00	60 M distance criterion
ECS 91	68.45781708	-10.72228336	1.00	60 M distance criterion
ECS 92	68.47151184	-10.73212147	1.00	60 M distance criterion
ECS 93	69.02443695	-11.57523632	59.99	60 M distance criterion
ECS 94	69.13383484	-12.10747337	32.44	60 M distance criterion
ECS 95	69.13723755	-12.12387753	1.00	60 M distance criterion
ECS 96	69.14090729	-12.14022446	1.00	60 M distance criterion
ECS 97	69.14486694	-12.15650749	1.00	60 M distance criterion
ECS 98	69.14909363	-12.17272377	1.00	60 M distance criterion
ECS 99	69.15358734	-12.18886948	1.00	60 M distance criterion
ECS 100	69.15836334	-12.20493889	1.00	60 M distance criterion
ECS 101	69.16341400	-12.22092628	1.00	60 M distance criterion
ECS 102	69.16873169	-12.23682976	1.00	60 M distance criterion
ECS 103	69.17431641	-12.25264359	1.00	60 M distance criterion
ECS 104	69.18017578	-12.26836300	1.00	60 M distance criterion
ECS 105	69.18629456	-12.28398514	1.00	60 M distance criterion
ECS 106	69.19268799	-12.29950523	1.00	60 M distance criterion
ECS 107	69.19933319	-12.31491661	1.00	60 M distance criterion
ECS 108	69.20623779	-12.33021641	1.00	60 M distance criterion
ECS 109	69.21341705	-12.34540176	1.00	60 M distance criterion



Point ID	Longitude (decimal deg°)	Latitude (decimal deg°)	Distance (M)	Article 76 criterion
ECS 110	69.22084045	-12.36046696	1.00	60 M distance criterion
ECS 111	69.22851562	-12.37540817	1.00	60 M distance criterion
ECS 112	69.22882080	-12.37602520	0.04	60 M distance criterion / 350M constraint point
ECS 113	69.23963928	-12.38294125	0.76	350M constraint point
ECS 114	69.25395203	-12.39200592	1.00	350M constraint point
ECS 115	69.26830292	-12.40103436	1.00	350M constraint point
ECS 116	69.28266907	-12.41001797	1.00	350M constraint point
ECS 117	69.29706573	-12.41896343	1.00	350M constraint point
ECS 118	69.31149292	-12.42786694	1.00	350M constraint point
ECS 119	69.32594299	-12.43672752	1.00	350M constraint point
ECS 120	69.34042358	-12.44554996	1.00	350M constraint point
ECS 121	69.35492706	-12.45432949	1.00	350M constraint point
ECS 122	69.36945343	-12.46306801	1.00	350M constraint point
ECS 123	69.38401031	-12.47176456	1.00	350M constraint point
ECS 124	69.39859772	-12.48042011	1.00	350M constraint point
ECS 125	69.41320038	-12.48903465	1.00	350M constraint point
ECS 126	69.42784119	-12.49760723	1.00	350M constraint point
ECS 127	69.44250488	-12.50613689	1.00	350M constraint point
ECS 128	69.45719147	-12.51462555	1.00	350M constraint point
ECS 129	69.47190094	-12.52307034	1.00	350M constraint point
ECS 130	69.48663330	-12.53147507	1.00	350M constraint point
ECS 131	69.50140381	-12.53983784	1.00	350M constraint point
ECS 132	69.51618958	-12.54815674	1.00	350M constraint point
ECS 133	69.53099823	-12.55643463	1.00	350M constraint point
ECS 134	69.54583740	-12.56467056	1.00	350M constraint point
ECS 135	69.56069946	-12.57286358	1.00	350M constraint point
ECS 136	69.57558441	-12.58101463	1.00	350M constraint point
ECS 137	69.59049988	-12.58912373	1.00	350M constraint point
ECS 138	69.60543060	-12.59718895	1.00	350M constraint point
ECS 139	69.62039948	-12.60521317	1.00	350M constraint point
ECS 140	69.63537598	-12.61319256	1.00	350M constraint point
ECS 141	69.65038300	-12.62113094	1.00	350M constraint point
ECS 142	69.66542053	-12.62902546	1.00	350M constraint point
ECS 143	69.68047333	-12.63687706	1.00	350M constraint point
ECS 144	69.69555664	-12.64468575	1.00	350M constraint point
ECS 145	69.71065521	-12.65245056	1.00	350M constraint point
ECS 146	69.72578430	-12.66017437	1.00	350M constraint point



Point ID	Longitude (decimal deg°)	Latitude (decimal deg°)	Distance (M)	Article 76 criterion
ECS 147	69.74092865	-12.66785336	1.00	350M constraint point
ECS 148	69.75610352	-12.67548943	1.00	350M constraint point
ECS 149	69.77129364	-12.68308067	1.00	350M constraint point
ECS 150	69.78651428	-12.69062901	1.00	350M constraint point
ECS 151	69.80175018	-12.69813538	1.00	350M constraint point
ECS 152	69.81701660	-12.70559788	1.00	350M constraint point
ECS 153	69.83230591	-12.71301746	1.00	350M constraint point
ECS 154	69.84761047	-12.72039223	1.00	350M constraint point
ECS 155	69.86293793	-12.72772408	1.00	350M constraint point
ECS 156	69.87829590	-12.73501205	1.00	350M constraint point
ECS 157	69.89366913	-12.74225616	1.00	350M constraint point
ECS 158	69.90906525	-12.74945545	1.00	350M constraint point
ECS 159	69.92448425	-12.75661278	1.00	350M constraint point
ECS 160	69.93991852	-12.76372433	1.00	350M constraint point
ECS 161	69.95538330	-12.77079296	1.00	350M constraint point
ECS 162	69.97087097	-12.77781773	1.00	350M constraint point
ECS 163	69.98637390	-12.78479767	1.00	350M constraint point
ECS 164	70.00189972	-12.79173279	1.00	350M constraint point
ECS 165	70.01744080	-12.79862309	1.00	350M constraint point
ECS 166	70.03301239	-12.80547047	1.00	350M constraint point
ECS 167	70.04859924	-12.81227112	1.00	350M constraint point
ECS 168	70.06420135	-12.81902981	1.00	350M constraint point
ECS 169	70.07982635	-12.82574272	1.00	350M constraint point
ECS 170	70.09548187	-12.83241081	1.00	350M constraint point
ECS 171	70.11114502	-12.83903408	1.00	350M constraint point
ECS 172	70.12683105	-12.84561348	1.00	350M constraint point
ECS 173	70.14253998	-12.85214806	1.00	350M constraint point
ECS 174	70.15827179	-12.85863781	1.00	350M constraint point
ECS 175	70.17401886	-12.86508274	1.00	350M constraint point
ECS 176	70.18978119	-12.87148190	1.00	350M constraint point
ECS 177	70.20557404	-12.87783718	1.00	350M constraint point
ECS 178	70.22137451	-12.88414574	1.00	350M constraint point
ECS 179	70.23719788	-12.89041042	1.00	350M constraint point
ECS 180	70.25304413	-12.89662933	1.00	350M constraint point
ECS 181	70.26890564	-12.90280247	1.00	350M constraint point
ECS 182	70.28478241	-12.90893078	1.00	350M constraint point
ECS 183	70.30068207	-12.91501427	1.00	350M constraint point
ECS 184	70.31659698	-12.92105103	1.00	350M constraint point



Point ID	Longitude (decimal deg°)	Latitude (decimal deg°)	Distance (M)	Article 76 criterion
ECS 185	70.33253479	-12.92704391	1.00	350M constraint point
ECS 186	70.34848785	-12.93299103	1.00	350M constraint point
ECS 187	70.36446381	-12.93889332	1.00	350M constraint point
ECS 188	70.38045502	-12.94474888	1.00	350M constraint point
ECS 189	70.39646149	-12.95055866	1.00	350M constraint point
ECS 190	70.41248322	-12.95632362	1.00	350M constraint point
ECS 191	70.42852783	-12.96204090	1.00	350M constraint point
ECS 192	70.44458008	-12.96771431	1.00	350M constraint point
ECS 193	70.46065521	-12.97334003	1.00	350M constraint point
ECS 194	70.47675323	-12.97892094	1.00	350M constraint point
ECS 195	70.49285889	-12.98445702	1.00	350M constraint point
ECS 196	70.50898743	-12.98994541	1.00	350M constraint point
ECS 197	70.52513123	-12.99538803	1.00	350M constraint point
ECS 198	70.54129028	-13.00078487	1.00	350M constraint point
ECS 199	70.55747223	-13.00613594	1.00	350M constraint point
ECS 200	70.57366180	-13.01144123	1.00	350M constraint point
ECS 201	70.58986664	-13.01669693	1.00	350M constraint point
ECS 202	70.60608673	-13.02190971	1.00	350M constraint point
ECS 203	70.62232971	-13.02707577	1.00	350M constraint point
ECS 204	70.63858795	-13.03219509	1.00	350M constraint point
ECS 205	70.65486145	-13.03726864	1.00	350M constraint point
ECS 206	70.67114258	-13.04229450	1.00	350M constraint point
ECS 207	70.68745422	-13.04727554	1.00	350M constraint point
ECS 208	70.70376587	-13.05220890	1.00	350M constraint point
ECS 209	70.72010040	-13.05709553	1.00	350M constraint point
ECS 210	70.73644257	-13.06193447	1.00	350M constraint point
ECS 211	70.75280762	-13.06672859	1.00	350M constraint point
ECS 212	70.76918030	-13.07147598	1.00	350M constraint point
ECS 213	70.78557587	-13.07617569	1.00	350M constraint point
ECS 214	70.80197906	-13.08082867	1.00	350M constraint point
ECS 215	70.81838989	-13.08543491	1.00	350M constraint point
ECS 216	70.83482361	-13.08999348	1.00	350M constraint point
ECS 217	70.85127258	-13.09450626	1.00	350M constraint point
ECS 218	70.86772919	-13.09897041	1.00	350M constraint point
ECS 219	70.88420105	-13.10338879	1.00	350M constraint point
ECS 220	70.90068054	-13.10776615	1.00	350M constraint point
ECS 221	70.91718292	-13.11209583	1.00	350M constraint point
ECS 222	70.93369293	-13.11637974	1.00	350M constraint point



Point ID	Longitude (decimal deg°)	Latitude (decimal deg°)	Distance (M)	Article 76 criterion
ECS 223	70.95021820	-13.12061596	1.00	350M constraint point
ECS 224	70.96675110	-13.12480450	1.00	350M constraint point
ECS 225	70.98329926	-13.12894535	1.00	350M constraint point
ECS 226	70.99986267	-13.13303947	1.00	350M constraint point
ECS 227	71.01643372	-13.13708591	1.00	350M constraint point
ECS 228	71.03302002	-13.14108658	1.00	350M constraint point
ECS 229	71.04962158	-13.14503956	1.00	350M constraint point
ECS 230	71.06623077	-13.14894390	1.00	350M constraint point
ECS 231	71.08285522	-13.15280151	1.00	350M constraint point
ECS 232	71.09948730	-13.15661144	1.00	350M constraint point
ECS 233	71.11613464	-13.16037369	1.00	350M constraint point
ECS 234	71.13279724	-13.16408825	1.00	350M constraint point
ECS 235	71.14945984	-13.16775608	1.00	350M constraint point
ECS 236	71.16613770	-13.17137623	1.00	350M constraint point
ECS 237	71.18283081	-13.17494774	1.00	350M constraint point
ECS 238	71.19953156	-13.17847252	1.00	350M constraint point
ECS 239	71.21624756	-13.18194962	1.00	350M constraint point
ECS 240	71.23296356	-13.18537903	1.00	350M constraint point
ECS 241	71.24969482	-13.18875885	1.00	350M constraint point
ECS 242	71.26643372	-13.19209290	1.00	350M constraint point
ECS 243	71.28318787	-13.19537830	1.00	350M constraint point
ECS 244	71.29994965	-13.19861603	1.00	350M constraint point
ECS 245	71.31672668	-13.20180511	1.00	350M constraint point
ECS 246	71.33350372	-13.20494747	1.00	350M constraint point
ECS 247	71.35029602	-13.20804119	1.00	350M constraint point
ECS 248	71.36709595	-13.21108723	1.00	350M constraint point
ECS 249	71.38390350	-13.21408558	1.00	350M constraint point
ECS 250	71.40072632	-13.21703625	1.00	350M constraint point
ECS 251	71.41754913	-13.21993732	1.00	350M constraint point
ECS 252	71.43438721	-13.22279167	1.00	350M constraint point
ECS 253	71.45123291	-13.22559738	1.00	350M constraint point
ECS 254	71.46808624	-13.22835541	1.00	350M constraint point
ECS 255	71.48494720	-13.23106480	1.00	350M constraint point
ECS 256	71.50181580	-13.23372650	1.00	350M constraint point
ECS 257	71.51869965	-13.23634052	1.00	350M constraint point
ECS 258	71.53558350	-13.23890495	1.00	350M constraint point
ECS 259	71.55247498	-13.24142170	1.00	350M constraint point
ECS 260	71.56937408	-13.24388981	1.00	350M constraint point



Point ID	Longitude (decimal deg°)	Latitude (decimal deg°)	Distance (M)	Article 76 criterion
ECS 261	71.58628845	-13.24631119	1.00	350M constraint point
ECS 262	71.60320282	-13.24868298	1.00	350M constraint point
ECS 263	71.62012482	-13.25100708	1.00	350M constraint point
ECS 264	71.63705444	-13.25328159	1.00	350M constraint point
ECS 265	71.65399170	-13.25551033	1.00	350M constraint point
ECS 266	71.67093658	-13.25768852	1.00	350M constraint point
ECS 267	71.68788910	-13.25981712	1.00	350M constraint point
ECS 268	71.69777679	-13.26103878	0.58	350M constraint point
ECS 269	71.71473694	-13.26309204	1.00	350M constraint point
ECS 270	71.73170471	-13.26509762	1.00	350M constraint point
ECS 271	71.74867249	-13.26705360	1.00	350M constraint point
ECS 272	71.76565552	-13.26896191	1.00	350M constraint point
ECS 273	71.78263855	-13.27082253	1.00	350M constraint point
ECS 274	71.79962921	-13.27263355	1.00	350M constraint point
ECS 275	71.81662750	-13.27439690	1.00	350M constraint point
ECS 276	71.83362579	-13.27611065	1.00	350M constraint point
ECS 277	71.85063171	-13.27777672	1.00	350M constraint point
ECS 278	71.86763763	-13.27939320	1.00	350M constraint point
ECS 279	71.88465118	-13.28096199	1.00	350M constraint point
ECS 280	71.90167236	-13.28248024	1.00	350M constraint point
ECS 281	71.91869354	-13.28395271	1.00	350M constraint point
ECS 282	71.93572235	-13.28537560	1.00	350M constraint point
ECS 283	71.95275116	-13.28674889	1.00	350M constraint point
ECS 284	71.96978760	-13.28807449	1.00	350M constraint point
ECS 285	71.98683167	-13.28935146	1.00	350M constraint point
ECS 286	72.00387573	-13.29057980	1.00	350M constraint point
ECS 287	72.02092743	-13.29175854	1.00	350M constraint point
ECS 288	72.03797913	-13.29289055	1.00	350M constraint point
ECS 289	72.05503845	-13.29397106	1.00	350M constraint point
ECS 290	72.07209778	-13.29500484	1.00	350M constraint point
ECS 291	72.08915710	-13.29598999	1.00	350M constraint point
ECS 292	72.10622406	-13.29692554	1.00	350M constraint point
ECS 293	72.12329102	-13.29781342	1.00	350M constraint point
ECS 294	72.14036560	-13.29865074	1.00	350M constraint point
ECS 295	72.15743256	-13.29944134	1.00	350M constraint point
ECS 296	72.17451477	-13.30018139	1.00	350M constraint point
ECS 297	72.19158936	-13.30089378	1.00	350M constraint point
ECS 298	72.20866394	-13.30155563	1.00	350M constraint point



Point ID	Longitude (decimal deg°)	Latitude (decimal deg°)	Distance (M)	Article 76 criterion
ECS 299	72.22574615	-13.30216789	1.00	350M constraint point
ECS 300	72.24282837	-13.30273247	1.00	350M constraint point
ECS 301	72.25991821	-13.30324745	1.00	350M constraint point
ECS 302	72.27700043	-13.30371571	1.00	350M constraint point
ECS 303	72.29409027	-13.30413342	1.00	350M constraint point
ECS 304	72.31118011	-13.30450249	1.00	350M constraint point
ECS 305	72.32826996	-13.30482292	1.00	350M constraint point
ECS 306	72.34535980	-13.30509567	1.00	350M constraint point
ECS 307	72.36244965	-13.30531788	1.00	350M constraint point
ECS 308	72.37953949	-13.30549145	1.00	350M constraint point
ECS 309	72.39662933	-13.30561638	1.00	350M constraint point
ECS 310	72.41371918	-13.30569267	1.00	350M constraint point
ECS 311	72.43080902	-13.30572128	1.00	350M constraint point
ECS 312	72.44789886	-13.30570030	1.00	350M constraint point
ECS 313	72.46498871	-13.30562973	1.00	350M constraint point
ECS 314	72.48207855	-13.30551147	1.00	350M constraint point
ECS 315	72.49917603	-13.30534363	1.00	350M constraint point
ECS 316	72.51626587	-13.30512714	1.00	350M constraint point
ECS 317	72.53335571	-13.30486107	1.00	350M constraint point
ECS 318	72.55044556	-13.30454826	1.00	350M constraint point
ECS 319	72.56753540	-13.30418491	1.00	350M constraint point
ECS 320	72.58461761	-13.30377388	1.00	350M constraint point
ECS 321	72.60170746	-13.30331326	1.00	350M constraint point
ECS 322	72.61878967	-13.30280399	1.00	350M constraint point
ECS 323	72.63587189	-13.30224609	1.00	350M constraint point
ECS 324	72.65295410	-13.30163860	1.00	350M constraint point
ECS 325	72.67003632	-13.30098343	1.00	350M constraint point
ECS 326	72.68711090	-13.30027962	1.00	350M constraint point
ECS 327	72.70419312	-13.29952621	1.00	350M constraint point
ECS 328	72.72126007	-13.29872513	1.00	350M constraint point
ECS 329	72.73833466	-13.29787350	1.00	350M constraint point
ECS 330	72.75540161	-13.29697418	1.00	350M constraint point
ECS 331	72.77246094	-13.29602718	1.00	350M constraint point
ECS 332	72.77899933	-13.29563618	0.38	60 M chord / 350M constraint point
ECS 333	73.04154968	-13.14929485	17.68	60 M distance criterion
ECS 334	73.04935455	-13.14755821	0.47	60 M distance criterion
ECS 335	73.06594849	-13.14358044	1.00	60 M distance criterion
ECS 336	73.08247375	-13.13933086	1.00	60 M distance criterion



Point ID	Longitude (decimal deg°)	Latitude (decimal deg°)	Distance (M)	Article 76 criterion
ECS 337	73.09892273	-13.13481236	1.00	60 M distance criterion
ECS 338	73.11528778	-13.13002300	1.00	60 M distance criterion
ECS 339	73.13156891	-13.12496853	1.00	60 M distance criterion
ECS 340	73.14776611	-13.11964607	1.00	60 M distance criterion
ECS 341	73.16386414	-13.11405849	1.00	60 M distance criterion
ECS 342	73.17987061	-13.10820866	1.00	60 M distance criterion
ECS 343	73.19577026	-13.10209656	1.00	60 M distance criterion
ECS 344	73.21156311	-13.09572506	1.00	60 M distance criterion
ECS 345	73.22724915	-13.08909512	1.00	60 M distance criterion
ECS 346	73.24281311	-13.08220959	1.00	60 M distance criterion
ECS 347	73.25825500	-13.07506943	1.00	60 M distance criterion
ECS 348	73.27358246	-13.06767654	1.00	60 M distance criterion
ECS 349	73.28877258	-13.06003380	1.00	60 M distance criterion
ECS 350	73.30383301	-13.05214405	1.00	60 M distance criterion
ECS 351	73.31875610	-13.04400826	1.00	60 M distance criterion
ECS 352	73.33353424	-13.03562832	1.00	60 M distance criterion
ECS 353	73.34817505	-13.02700615	1.00	60 M distance criterion
ECS 354	73.36266327	-13.01814651	1.00	60 M distance criterion
ECS 355	73.37699127	-13.00905037	1.00	60 M distance criterion
ECS 356	73.39116669	-12.99972248	1.00	60 M distance criterion
ECS 357	73.40518188	-12.99016094	1.00	60 M distance criterion
ECS 358	73.41902161	-12.98037243	1.00	60 M distance criterion
ECS 359	73.43270874	-12.97035694	1.00	60 M distance criterion
ECS 360	73.44621277	-12.96011829	1.00	60 M distance criterion
ECS 361	73.45954132	-12.94966125	1.00	60 M distance criterion
ECS 362	73.47268677	-12.93898678	1.00	60 M distance criterion
ECS 363	73.48564911	-12.92809677	1.00	60 M distance criterion
ECS 364	73.49842834	-12.91699696	1.00	60 M distance criterion
ECS 365	73.51100922	-12.90568829	1.00	60 M distance criterion
ECS 366	73.52339935	-12.89417648	1.00	60 M distance criterion
ECS 367	73.53559113	-12.88246250	1.00	60 M distance criterion
ECS 368	73.54757690	-12.87055016	1.00	60 M distance criterion
ECS 369	73.55935669	-12.85844421	1.00	60 M distance criterion
ECS 370	73.57093811	-12.84614468	1.00	60 M distance criterion
ECS 371	73.58230591	-12.83365726	1.00	60 M distance criterion
ECS 372	73.59345245	-12.82098579	1.00	60 M distance criterion
ECS 373	73.60438538	-12.80813217	1.00	60 M distance criterion
ECS 374	73.61508942	-12.79510117	1.00	60 M distance criterion



Point ID	Longitude (decimal deg°)	Latitude (decimal deg°)	Distance (M)	Article 76 criterion
ECS 375	73.62557983	-12.78189850	1.00	60 M distance criterion
ECS 376	73.63584137	-12.76852322	1.00	60 M distance criterion
ECS 377	73.64586639	-12.75498295	1.00	60 M distance criterion
ECS 378	73.65567017	-12.74128056	1.00	60 M distance criterion
ECS 379	73.66522980	-12.72741890	1.00	60 M distance criterion
ECS 380	73.67455292	-12.71340275	1.00	60 M distance criterion
ECS 381	73.68363953	-12.69923401	1.00	60 M distance criterion
ECS 382	73.69248199	-12.68491936	1.00	60 M distance criterion
ECS 383	73.70108032	-12.67046261	1.00	60 M distance criterion
ECS 384	73.70942688	-12.65586758	1.00	60 M distance criterion
ECS 385	73.71752930	-12.64113617	1.00	60 M distance criterion
ECS 386	73.72537231	-12.62627411	1.00	60 M distance criterion
ECS 387	73.73297119	-12.61128616	1.00	60 M distance criterion
ECS 388	73.74030304	-12.59617424	1.00	60 M distance criterion
ECS 389	73.74738312	-12.58094501	1.00	60 M distance criterion
ECS 390	73.75420380	-12.56560135	1.00	60 M distance criterion
ECS 391	73.76075745	-12.55014896	1.00	60 M distance criterion
ECS 392	73.76705170	-12.53459072	1.00	60 M distance criterion
ECS 393	73.77307892	-12.51893234	1.00	60 M distance criterion
ECS 394	73.77883911	-12.50317669	1.00	60 M distance criterion
ECS 395	73.78433228	-12.48732758	1.00	60 M distance criterion
ECS 396	73.78955078	-12.47139168	1.00	60 M distance criterion
ECS 397	73.79450226	-12.45537186	1.00	60 M distance criterion
ECS 398	73.79917908	-12.43927383	1.00	60 M distance criterion
ECS 399	73.80358124	-12.42310143	1.00	60 M distance criterion
ECS 400	73.80770874	-12.40685940	1.00	60 M distance criterion
ECS 401	73.81155396	-12.39055157	1.00	60 M distance criterion
ECS 402	73.81513214	-12.37418270	1.00	60 M distance criterion
ECS 403	73.81842804	-12.35775852	1.00	60 M distance criterion
ECS 404	73.82144165	-12.34128284	1.00	60 M distance criterion
ECS 405	73.82418060	-12.32475853	1.00	60 M distance criterion
ECS 406	73.82662964	-12.30819130	1.00	60 M distance criterion
ECS 407	73.82880402	-12.29158688	1.00	60 M distance criterion
ECS 408	73.83069611	-12.27494812	1.00	60 M distance criterion
ECS 409	73.83230591	-12.25828266	1.00	60 M distance criterion
ECS 410	73.83363342	-12.24159050	1.00	60 M distance criterion
ECS 411	73.83467865	-12.22488117	1.00	60 M distance criterion
ECS 412	73.83543396	-12.20815563	1.00	60 M distance criterion



Point ID	Longitude (decimal deg°)	Latitude (decimal deg°)	Distance (M)	Article 76 criterion
ECS 413	73.83591461	-12.19142056	1.00	60 M distance criterion
ECS 414	73.83610535	-12.17468071	1.00	60 M distance criterion
ECS 415	73.83628845	-11.61268330	33.57	60 M distance criterion
ECS 416	73.83627319	-11.59594154	1.00	60 M distance criterion
ECS 417	73.83597565	-11.57920170	1.00	60 M distance criterion
ECS 418	73.83539581	-11.56246853	1.00	60 M distance criterion
ECS 419	73.83453369	-11.54574776	1.00	60 M distance criterion
ECS 420	73.83338928	-11.52904415	1.00	60 M distance criterion
ECS 421	73.83196259	-11.51236057	1.00	60 M distance criterion
ECS 422	73.83025360	-11.49570274	1.00	60 M distance criterion
ECS 423	73.82826233	-11.47907543	1.00	60 M distance criterion
ECS 424	73.82599640	-11.46248436	1.00	60 M distance criterion
ECS 425	73.82344055	-11.44593239	1.00	60 M distance criterion
ECS 426	73.82061768	-11.42942429	1.00	60 M distance criterion
ECS 427	73.81751251	-11.41296482	1.00	60 M distance criterion
ECS 428	73.81412506	-11.39655876	1.00	60 M distance criterion
ECS 429	73.81046295	-11.38020992	1.00	60 M distance criterion
ECS 430	73.69592285	-10.55041122	50.02	60 M distance criterion chord / Baseline +200M



MCSS-ES-ANNEX 2

Table Listing the Fixed Points Defining the Outer Limits of the Continental Shelf in the Southern Chagos Archipelago Region (Degrees, Minutes, Seconds)

Point ID	Latitude (deg° min' sec")	Longitude (deg° min' sec")	Distance (M)	Article 76 criterion
ECS 1	8 ° 26 ' 49.12 " S	68 ° 28 ' 26.4 " E	0.00	60 M distance criterion / Baseline +200M
ECS 2	8 ° 27 ' 4.12 " S	68 ° 28 ' 19.53 " E	0.27	60 M distance criterion
ECS 3	8 ° 27 ' 59.43 " S	68 ° 27 ' 55.42 " E	1.00	60 M distance criterion
ECS 4	8 ° 28 ' 55.13 " S	68 ° 27 ' 32.26 " E	1.00	60 M distance criterion
ECS 5	8 ° 29 ' 51.2 " S	68 ° 27 ' 10.04 " E	1.00	60 M distance criterion
ECS 6	8 ° 30 ' 47.64 " S	68 ° 26 ' 48.76 " E	1.00	60 M distance criterion
ECS 7	8 ° 31 ' 44.41 " S	68 ° 26 ' 28.4 " E	1.00	60 M distance criterion
ECS 8	8 ° 32 ' 41.53 " S	68 ° 26 ' 9.04 " E	1.00	60 M distance criterion
ECS 9	8 ° 33 ' 38.95 " S	68 ° 25 ' 50.58 " E	1.00	60 M distance criterion
ECS 10	8 ° 34 ' 36.67 " S	68 ° 25 ' 33.11 " E	1.00	60 M distance criterion
ECS 11	8 ° 35 ' 34.67 " S	68 ° 25 ' 16.64 " E	1.00	60 M distance criterion
ECS 12	8 ° 36 ' 32.94 " S	68 ° 25 ' 1.09 " E	1.00	60 M distance criterion
ECS 13	9 ° 33 ' 55.9 " S	68 ° 6 ' 36.41 " E	59.95	60 M distance criterion
ECS 14	9 ° 34 ' 14.22 " S	68 ° 6 ' 29.49 " E	0.32	60 M distance criterion
ECS 15	9 ° 35 ' 11.02 " S	68 ° 6 ' 9.17 " E	1.00	60 M distance criterion
ECS 16	9 ° 36 ' 8.15 " S	68 ° 5 ' 49.75 " E	1.00	60 M distance criterion
ECS 17	9 ° 37 ' 5.58 " S	68 ° 5 ' 31.32 " E	1.00	60 M distance criterion
ECS 18	9 ° 38 ' 3.31 " S	68 ° 5 ' 13.85 " E	1.00	60 M distance criterion
ECS 19	9 ° 39 ' 1.32 " S	68 ° 4 ' 57.34 " E	1.00	60 M distance criterion
ECS 20	9 ° 39 ' 59.6 " S	68 ° 4 ' 41.83 " E	1.00	60 M distance criterion
ECS 21	9 ° 40 ' 58.13 " S	68 ° 4 ' 27.3 " E	1.00	60 M distance criterion
ECS 22	9 ° 41 ' 56.89 " S	68 ° 4 ' 13.73 " E	1.00	60 M distance criterion
ECS 23	9 ° 42 ' 55.86 " S	68 ° 4 ' 1.15 " E	1.00	60 M distance criterion
ECS 24	9 ° 43 ' 55.03 " S	68 ° 3 ' 49.56 " E	1.00	60 M distance criterion
ECS 25	9 ° 44 ' 54.39 " S	68 ° 3 ' 38.98 " E	1.00	60 M distance criterion
ECS 26	9 ° 45 ' 53.91 " S	68 ° 3 ' 29.37 " E	1.00	60 M distance criterion
ECS 27	9 ° 46 ' 53.58 " S	68 ° 3 ' 20.8 " E	1.00	60 M distance criterion
ECS 28	9 ° 47 ' 53.39 " S	68 ° 3 ' 13.22 " E	1.00	60 M distance criterion
ECS 29	9 ° 48 ' 53.31 " S	68 ° 3 ' 6.63 " E	1.00	60 M distance criterion
ECS 30	9 ° 49 ' 53.34 " S	68 ° 3 ' 1.05 " E	1.00	60 M distance criterion
ECS 31	9 ° 50 ' 53.45 " S	68 ° 2 ' 56.47 " E	1.00	60 M distance criterion
ECS 32	9 ° 51 ' 53.62 " S	68 ° 2 ' 52.92 " E	1.00	60 M distance criterion



Point ID	Latitude (deg° min' sec")	Longitude (deg° min' sec")	Distance (M)	Article 76 criterion
ECS 33	9 ° 52 ' 53.85 " S	68 ° 2 ' 50.37 " E	1.00	60 M distance criterion
ECS 34	9 ° 53 ' 54.11 " S	68 ° 2 ' 48.86 " E	1.00	60 M distance criterion
ECS 35	9 ° 54 ' 54.38 " S	68 ° 2 ' 48.34 " E	1.00	60 M distance criterion
ECS 36	9 ° 55 ' 54.66 " S	68 ° 2 ' 48.83 " E	1.00	60 M distance criterion
ECS 37	9 ° 56 ' 54.92 " S	68 ° 2 ' 50.34 " E	1.00	60 M distance criterion
ECS 38	9 ° 57 ' 55.14 " S	68 ° 2 ' 52.87 " E	1.00	60 M distance criterion
ECS 39	9 ° 58 ' 55.32 " S	68 ° 2 ' 56.39 " E	1.00	60 M distance criterion
ECS 40	9 ° 59 ' 55.43 " S	68 ° 3 ' 0.92 " E	1.00	60 M distance criterion
ECS 41	10 ° 0 ' 55.45 " S	68 ° 3 ' 6.49 " E	1.00	60 M distance criterion
ECS 42	10 ° 1 ' 55.38 " S	68 ° 3 ' 13.06 " E	1.00	60 M distance criterion
ECS 43	10 ° 2 ' 55.19 " S	68 ° 3 ' 20.61 " E	1.00	60 M distance criterion
ECS 44	10 ° 3 ' 54.87 " S	68 ° 3 ' 29.18 " E	1.00	60 M distance criterion
ECS 45	10 ° 4 ' 54.4 " S	68 ° 3 ' 38.79 " E	1.00	60 M distance criterion
ECS 46	10 ° 5 ' 53.76 " S	68 ° 3 ' 49.37 " E	1.00	60 M distance criterion
ECS 47	10 ° 6 ' 52.93 " S	68 ° 4 ' 0.93 " E	1.00	60 M distance criterion
ECS 48	10 ° 7 ' 51.91 " S	68 ° 4 ' 13.51 " E	1.00	60 M distance criterion
ECS 49	10 ° 8 ' 50.67 " S	68 ° 4 ' 27.05 " E	1.00	60 M distance criterion
ECS 50	10 ° 9 ' 49.2 " S	68 ° 4 ' 41.61 " E	1.00	60 M distance criterion
ECS 51	10 ° 10 ' 47.48 " S	68 ° 4 ' 57.15 " E	1.00	60 M distance criterion
ECS 52	10 ° 11 ' 45.5 " S	68 ° 5 ' 13.69 " E	1.00	60 M distance criterion
ECS 53	10 ° 12 ' 43.23 " S	68 ° 5 ' 31.16 " E	1.00	60 M distance criterion
ECS 54	10 ° 13 ' 40.67 " S	68 ° 5 ' 49.61 " E	1.00	60 M distance criterion
ECS 55	10 ° 14 ' 37.79 " S	68 ° 6 ' 9.06 " E	1.00	60 M distance criterion
ECS 56	10 ° 15 ' 34.59 " S	68 ° 6 ' 29.44 " E	1.00	60 M distance criterion
ECS 57	10 ° 16 ' 31.04 " S	68 ° 6 ' 50.78 " E	1.00	60 M distance criterion
ECS 58	10 ° 17 ' 27.12 " S	68 ° 7 ' 13.08 " E	1.00	60 M distance criterion
ECS 59	10 ° 18 ' 22.84 " S	68 ° 7 ' 36.32 " E	1.00	60 M distance criterion
ECS 60	10 ° 19 ' 18.16 " S	68 ° 8 ' 0.49 " E	1.00	60 M distance criterion
ECS 61	10 ° 20 ' 13.07 " S	68 ° 8 ' 25.59 " E	1.00	60 M distance criterion
ECS 62	10 ° 21 ' 7.56 " S	68 ° 8 ' 51.6 " E	1.00	60 M distance criterion
ECS 63	10 ° 22 ' 1.62 " S	68 ° 9 ' 18.54 " E	1.00	60 M distance criterion
ECS 64	10 ° 22 ' 55.22 " S	68 ° 9 ' 46.4 " E	1.00	60 M distance criterion
ECS 65	10 ° 23 ' 48.35 " S	68 ° 10 ' 15.15 " E	1.00	60 M distance criterion
ECS 66	10 ° 24 ' 41.01 " S	68 ° 10 ' 44.79 " E	1.00	60 M distance criterion
ECS 67	10 ° 25 ' 33.16 " S	68 ° 11 ' 15.3 " E	1.00	60 M distance criterion
ECS 68	10 ° 26 ' 24.8 " S	68 ° 11 ' 46.72 " E	1.00	60 M distance criterion
ECS 69	10 ° 27 ' 15.92 " S	68 ° 12 ' 19 " E	1.00	60 M distance criterion
ECS 70	10 ° 28 ' 6.49 " S	68 ° 12 ' 52.12 " E	1.00	60 M distance criterion



Point ID	Latitude (deg° min' sec")	Longitude (deg° min' sec")	Distance (M)	Article 76 criterion
ECS 71	10 ° 28 ' 56.51 " S	68 ° 13 ' 26.12 " E	1.00	60 M distance criterion
ECS 72	10 ° 29 ' 45.96 " S	68 ° 14 ' 0.92 " E	1.00	60 M distance criterion
ECS 73	10 ° 30 ' 34.83 " S	68 ° 14 ' 36.57 " E	1.00	60 M distance criterion
ECS 74	10 ° 31 ' 23.12 " S	68 ° 15 ' 13.05 " E	1.00	60 M distance criterion
ECS 75	10 ° 32 ' 10.78 " S	68 ° 15 ' 50.34 " E	1.00	60 M distance criterion
ECS 76	10 ° 32 ' 57.82 " S	68 ° 16 ' 28.44 " E	1.00	60 M distance criterion
ECS 77	10 ° 33 ' 44.23 " S	68 ° 17 ' 7.3 " E	1.00	60 M distance criterion
ECS 78	10 ° 34 ' 29.99 " S	68 ° 17 ' 46.96 " E	1.00	60 M distance criterion
ECS 79	10 ° 35 ' 15.08 " S	68 ° 18 ' 27.39 " E	1.00	60 M distance criterion
ECS 80	10 ° 35 ' 59.51 " S	68 ° 19 ' 8.59 " E	1.00	60 M distance criterion
ECS 81	10 ° 36 ' 43.24 " S	68 ° 19 ' 50.51 " E	1.00	60 M distance criterion
ECS 82	10 ° 37 ' 26.27 " S	68 ° 20 ' 33.16 " E	1.00	60 M distance criterion
ECS 83	10 ° 38 ' 8.6 " S	68 ° 21 ' 16.56 " E	1.00	60 M distance criterion
ECS 84	10 ° 38 ' 50.2 " S	68 ° 22 ' 0.64 " E	1.00	60 M distance criterion
ECS 85	10 ° 39 ' 31.07 " S	68 ° 22 ' 45.41 " E	1.00	60 M distance criterion
ECS 86	10 ° 40 ' 11.18 " S	68 ° 23 ' 30.89 " E	1.00	60 M distance criterion
ECS 87	10 ° 40 ' 50.55 " S	68 ° 24 ' 17.06 " E	1.00	60 M distance criterion
ECS 88	10 ° 41 ' 29.15 " S	68 ° 25 ' 3.89 " E	1.00	60 M distance criterion
ECS 89	10 ° 42 ' 6.97 " S	68 ° 25 ' 51.35 " E	1.00	60 M distance criterion
ECS 90	10 ° 42 ' 44 " S	68 ° 26 ' 39.42 " E	1.00	60 M distance criterion
ECS 91	10 ° 43 ' 20.22 " S	68 ° 27 ' 28.14 " E	1.00	60 M distance criterion
ECS 92	10 ° 43 ' 55.64 " S	68 ° 28 ' 17.44 " E	1.00	60 M distance criterion
ECS 93	11 ° 34 ' 30.85 " S	69 ° 1 ' 27.97 " E	59.99	60 M distance criterion
ECS 94	12 ° 6 ' 26.9 " S	69 ° 8 ' 1.81 " E	32.44	60 M distance criterion
ECS 95	12 ° 7 ' 25.96 " S	69 ° 8 ' 14.06 " E	1.00	60 M distance criterion
ECS 96	12 ° 8 ' 24.81 " S	69 ° 8 ' 27.27 " E	1.00	60 M distance criterion
ECS 97	12 ° 9 ' 23.43 " S	69 ° 8 ' 41.52 " E	1.00	60 M distance criterion
ECS 98	12 ° 10 ' 21.81 " S	69 ° 8 ' 56.74 " E	1.00	60 M distance criterion
ECS 99	12 ° 11 ' 19.93 " S	69 ° 9 ' 12.91 " E	1.00	60 M distance criterion
ECS 100	12 ° 12 ' 17.78 " S	69 ° 9 ' 30.11 " E	1.00	60 M distance criterion
ECS 101	12 ° 13 ' 15.33 " S	69 ° 9 ' 48.29 " E	1.00	60 M distance criterion
ECS 102	12 ° 14 ' 12.59 " S	69 ° 10 ' 7.43 " E	1.00	60 M distance criterion
ECS 103	12 ° 15 ' 9.52 " S	69 ° 10 ' 27.54 " E	1.00	60 M distance criterion
ECS 104	12 ° 16 ' 6.11 " S	69 ° 10 ' 48.63 " E	1.00	60 M distance criterion
ECS 105	12 ° 17 ' 2.35 " S	69 ° 11 ' 10.66 " E	1.00	60 M distance criterion
ECS 106	12 ° 17 ' 58.22 " S	69 ° 11 ' 33.68 " E	1.00	60 M distance criterion
ECS 107	12 ° 18 ' 53.7 " S	69 ° 11 ' 57.6 " E	1.00	60 M distance criterion
ECS 108	12 ° 19 ' 48.78 " S	69 ° 12 ' 22.46 " E	1.00	60 M distance criterion



Point ID	Latitude (deg° min' sec")	Longitude (deg° min' sec")	Distance (M)	Article 76 criterion
ECS 109	12 ° 20 ' 43.45 " S	69 ° 12 ' 48.3 " E	1.00	60 M distance criterion
ECS 110	12 ° 21 ' 37.68 " S	69 ° 13 ' 15.03 " E	1.00	60 M distance criterion
ECS 111	12 ° 22 ' 31.47 " S	69 ° 13 ' 42.66 " E	1.00	60 M distance criterion
ECS 112	12 ° 22 ' 33.69 " S	69 ° 13 ' 43.75 " E	0.04	60 M distance criterion / 350M constraint point
ECS 113	12 ° 22 ' 58.59 " S	69 ° 14 ' 22.7 " E	0.76	350M constraint point
ECS 114	12 ° 23 ' 31.22 " S	69 ° 15 ' 14.23 " E	1.00	350M constraint point
ECS 115	12 ° 24 ' 3.72 " S	69 ° 16 ' 5.89 " E	1.00	350M constraint point
ECS 116	12 ° 24 ' 36.06 " S	69 ° 16 ' 57.61 " E	1.00	350M constraint point
ECS 117	12 ° 25 ' 8.27 " S	69 ° 17 ' 49.44 " E	1.00	350M constraint point
ECS 118	12 ° 25 ' 40.32 " S	69 ° 18 ' 41.37 " E	1.00	350M constraint point
ECS 119	12 ° 26 ' 12.22 " S	69 ° 19 ' 33.39 " E	1.00	350M constraint point
ECS 120	12 ° 26 ' 43.98 " S	69 ° 20 ' 25.52 " E	1.00	350M constraint point
ECS 121	12 ° 27 ' 15.59 " S	69 ° 21 ' 17.74 " E	1.00	350M constraint point
ECS 122	12 ° 27 ' 47.04 " S	69 ° 22 ' 10.03 " E	1.00	350M constraint point
ECS 123	12 ° 28 ' 18.35 " S	69 ° 23 ' 2.44 " E	1.00	350M constraint point
ECS 124	12 ° 28 ' 49.51 " S	69 ° 23 ' 54.95 " E	1.00	350M constraint point
ECS 125	12 ° 29 ' 20.52 " S	69 ° 24 ' 47.52 " E	1.00	350M constraint point
ECS 126	12 ° 29 ' 51.39 " S	69 ° 25 ' 40.23 " E	1.00	350M constraint point
ECS 127	12 ° 30 ' 22.09 " S	69 ° 26 ' 33.02 " E	1.00	350M constraint point
ECS 128	12 ° 30 ' 52.65 " S	69 ° 27 ' 25.89 " E	1.00	350M constraint point
ECS 129	12 ° 31 ' 23.05 " S	69 ° 28 ' 18.84 " E	1.00	350M constraint point
ECS 130	12 ° 31 ' 53.31 " S	69 ° 29 ' 11.88 " E	1.00	350M constraint point
ECS 131	12 ° 32 ' 23.42 " S	69 ° 30 ' 5.05 " E	1.00	350M constraint point
ECS 132	12 ° 32 ' 53.36 " S	69 ° 30 ' 58.28 " E	1.00	350M constraint point
ECS 133	12 ° 33 ' 23.16 " S	69 ° 31 ' 51.59 " E	1.00	350M constraint point
ECS 134	12 ° 33 ' 52.81 " S	69 ° 32 ' 45.01 " E	1.00	350M constraint point
ECS 135	12 ° 34 ' 22.31 " S	69 ° 33 ' 38.52 " E	1.00	350M constraint point
ECS 136	12 ° 34 ' 51.65 " S	69 ° 34 ' 32.1 " E	1.00	350M constraint point
ECS 137	12 ° 35 ' 20.85 " S	69 ° 35 ' 25.8 " E	1.00	350M constraint point
ECS 138	12 ° 35 ' 49.88 " S	69 ° 36 ' 19.55 " E	1.00	350M constraint point
ECS 139	12 ° 36 ' 18.77 " S	69 ° 37 ' 13.44 " E	1.00	350M constraint point
ECS 140	12 ° 36 ' 47.49 " S	69 ° 38 ' 7.35 " E	1.00	350M constraint point
ECS 141	12 ° 37 ' 16.07 " S	69 ° 39 ' 1.38 " E	1.00	350M constraint point
ECS 142	12 ° 37 ' 44.49 " S	69 ° 39 ' 55.51 " E	1.00	350M constraint point
ECS 143	12 ° 38 ' 12.76 " S	69 ° 40 ' 49.7 " E	1.00	350M constraint point
ECS 144	12 ° 38 ' 40.87 " S	69 ° 41 ' 44 " E	1.00	350M constraint point
ECS 145	12 ° 39 ' 8.82 " S	69 ° 42 ' 38.36 " E	1.00	350M constraint point



Point ID	Latitude (deg° min' sec")	Longitude (deg° min' sec")	Distance (M)	Article 76 criterion
ECS 146	12 ° 39 ' 36.63 " S	69 ° 43 ' 32.82 " E	1.00	350M constraint point
ECS 147	12 ° 40 ' 4.27 " S	69 ° 44 ' 27.34 " E	1.00	350M constraint point
ECS 148	12 ° 40 ' 31.76 " S	69 ° 45 ' 21.97 " E	1.00	350M constraint point
ECS 149	12 ° 40 ' 59.09 " S	69 ° 46 ' 16.66 " E	1.00	350M constraint point
ECS 150	12 ° 41 ' 26.26 " S	69 ° 47 ' 11.45 " E	1.00	350M constraint point
ECS 151	12 ° 41 ' 53.29 " S	69 ° 48 ' 6.3 " E	1.00	350M constraint point
ECS 152	12 ° 42 ' 20.15 " S	69 ° 49 ' 1.26 " E	1.00	350M constraint point
ECS 153	12 ° 42 ' 46.86 " S	69 ° 49 ' 56.3 " E	1.00	350M constraint point
ECS 154	12 ° 43 ' 13.41 " S	69 ° 50 ' 51.4 " E	1.00	350M constraint point
ECS 155	12 ° 43 ' 39.81 " S	69 ° 51 ' 46.58 " E	1.00	350M constraint point
ECS 156	12 ° 44 ' 6.04 " S	69 ° 52 ' 41.87 " E	1.00	350M constraint point
ECS 157	12 ° 44 ' 32.12 " S	69 ° 53 ' 37.21 " E	1.00	350M constraint point
ECS 158	12 ° 44 ' 58.04 " S	69 ° 54 ' 32.63 " E	1.00	350M constraint point
ECS 159	12 ° 45 ' 23.81 " S	69 ° 55 ' 28.14 " E	1.00	350M constraint point
ECS 160	12 ° 45 ' 49.41 " S	69 ° 56 ' 23.71 " E	1.00	350M constraint point
ECS 161	12 ° 46 ' 14.85 " S	69 ° 57 ' 19.38 " E	1.00	350M constraint point
ECS 162	12 ° 46 ' 40.14 " S	69 ° 58 ' 15.14 " E	1.00	350M constraint point
ECS 163	12 ° 47 ' 5.27 " S	69 ° 59 ' 10.95 " E	1.00	350M constraint point
ECS 164	12 ° 47 ' 30.24 " S	70 ° 0 ' 6.84 " E	1.00	350M constraint point
ECS 165	12 ° 47 ' 55.04 " S	70 ° 1 ' 2.79 " E	1.00	350M constraint point
ECS 166	12 ° 48 ' 19.69 " S	70 ° 1 ' 58.84 " E	1.00	350M constraint point
ECS 167	12 ° 48 ' 44.18 " S	70 ° 2 ' 54.96 " E	1.00	350M constraint point
ECS 168	12 ° 49 ' 8.51 " S	70 ° 3 ' 51.12 " E	1.00	350M constraint point
ECS 169	12 ° 49 ' 32.67 " S	70 ° 4 ' 47.37 " E	1.00	350M constraint point
ECS 170	12 ° 49 ' 56.68 " S	70 ° 5 ' 43.73 " E	1.00	350M constraint point
ECS 171	12 ° 50 ' 20.52 " S	70 ° 6 ' 40.12 " E	1.00	350M constraint point
ECS 172	12 ° 50 ' 44.21 " S	70 ° 7 ' 36.59 " E	1.00	350M constraint point
ECS 173	12 ° 51 ' 7.73 " S	70 ° 8 ' 33.14 " E	1.00	350M constraint point
ECS 174	12 ° 51 ' 31.1 " S	70 ° 9 ' 29.78 " E	1.00	350M constraint point
ECS 175	12 ° 51 ' 54.3 " S	70 ° 10 ' 26.47 " E	1.00	350M constraint point
ECS 176	12 ° 52 ' 17.33 " S	70 ° 11 ' 23.21 " E	1.00	350M constraint point
ECS 177	12 ° 52 ' 40.21 " S	70 ° 12 ' 20.07 " E	1.00	350M constraint point
ECS 178	12 ° 53 ' 2.92 " S	70 ° 13 ' 16.95 " E	1.00	350M constraint point
ECS 179	12 ° 53 ' 25.48 " S	70 ° 14 ' 13.91 " E	1.00	350M constraint point
ECS 180	12 ° 53 ' 47.87 " S	70 ° 15 ' 10.96 " E	1.00	350M constraint point
ECS 181	12 ° 54 ' 10.09 " S	70 ° 16 ' 8.06 " E	1.00	350M constraint point
ECS 182	12 ° 54 ' 32.15 " S	70 ° 17 ' 5.22 " E	1.00	350M constraint point
ECS 183	12 ° 54 ' 54.05 " S	70 ° 18 ' 2.46 " E	1.00	350M constraint point



Point ID	Latitude (deg° min' sec")	Longitude (deg° min' sec")	Distance (M)	Article 76 criterion
ECS 184	12 ° 55 ' 15.78 " S	70 ° 18 ' 59.75 " E	1.00	350M constraint point
ECS 185	12 ° 55 ' 37.36 " S	70 ° 19 ' 57.13 " E	1.00	350M constraint point
ECS 186	12 ° 55 ' 58.77 " S	70 ° 20 ' 54.56 " E	1.00	350M constraint point
ECS 187	12 ° 56 ' 20.02 " S	70 ° 21 ' 52.07 " E	1.00	350M constraint point
ECS 188	12 ° 56 ' 41.1 " S	70 ° 22 ' 49.64 " E	1.00	350M constraint point
ECS 189	12 ° 57 ' 2.01 " S	70 ° 23 ' 47.26 " E	1.00	350M constraint point
ECS 190	12 ° 57 ' 22.77 " S	70 ° 24 ' 44.94 " E	1.00	350M constraint point
ECS 191	12 ° 57 ' 43.35 " S	70 ° 25 ' 42.7 " E	1.00	350M constraint point
ECS 192	12 ° 58 ' 3.77 " S	70 ° 26 ' 40.49 " E	1.00	350M constraint point
ECS 193	12 ° 58 ' 24.02 " S	70 ° 27 ' 38.36 " E	1.00	350M constraint point
ECS 194	12 ° 58 ' 44.12 " S	70 ° 28 ' 36.31 " E	1.00	350M constraint point
ECS 195	12 ° 59 ' 4.05 " S	70 ° 29 ' 34.29 " E	1.00	350M constraint point
ECS 196	12 ° 59 ' 23.8 " S	70 ° 30 ' 32.35 " E	1.00	350M constraint point
ECS 197	12 ° 59 ' 43.4 " S	70 ° 31 ' 30.47 " E	1.00	350M constraint point
ECS 198	13 ° 0 ' 2.83 " S	70 ° 32 ' 28.65 " E	1.00	350M constraint point
ECS 199	13 ° 0 ' 22.09 " S	70 ° 33 ' 26.9 " E	1.00	350M constraint point
ECS 200	13 ° 0 ' 41.19 " S	70 ° 34 ' 25.18 " E	1.00	350M constraint point
ECS 201	13 ° 1 ' 0.11 " S	70 ° 35 ' 23.52 " E	1.00	350M constraint point
ECS 202	13 ° 1 ' 18.87 " S	70 ° 36 ' 21.91 " E	1.00	350M constraint point
ECS 203	13 ° 1 ' 37.47 " S	70 ° 37 ' 20.39 " E	1.00	350M constraint point
ECS 204	13 ° 1 ' 55.9 " S	70 ° 38 ' 18.92 " E	1.00	350M constraint point
ECS 205	13 ° 2 ' 14.17 " S	70 ° 39 ' 17.5 " E	1.00	350M constraint point
ECS 206	13 ° 2 ' 32.26 " S	70 ° 40 ' 16.11 " E	1.00	350M constraint point
ECS 207	13 ° 2 ' 50.19 " S	70 ° 41 ' 14.84 " E	1.00	350M constraint point
ECS 208	13 ° 3 ' 7.95 " S	70 ° 42 ' 13.56 " E	1.00	350M constraint point
ECS 209	13 ° 3 ' 25.54 " S	70 ° 43 ' 12.36 " E	1.00	350M constraint point
ECS 210	13 ° 3 ' 42.96 " S	70 ° 44 ' 11.19 " E	1.00	350M constraint point
ECS 211	13 ° 4 ' 0.22 " S	70 ° 45 ' 10.11 " E	1.00	350M constraint point
ECS 212	13 ° 4 ' 17.31 " S	70 ° 46 ' 9.05 " E	1.00	350M constraint point
ECS 213	13 ° 4 ' 34.23 " S	70 ° 47 ' 8.07 " E	1.00	350M constraint point
ECS 214	13 ° 4 ' 50.98 " S	70 ° 48 ' 7.12 " E	1.00	350M constraint point
ECS 215	13 ° 5 ' 7.57 " S	70 ° 49 ' 6.2 " E	1.00	350M constraint point
ECS 216	13 ° 5 ' 23.98 " S	70 ° 50 ' 5.36 " E	1.00	350M constraint point
ECS 217	13 ° 5 ' 40.22 " S	70 ° 51 ' 4.58 " E	1.00	350M constraint point
ECS 218	13 ° 5 ' 56.29 " S	70 ° 52 ' 3.83 " E	1.00	350M constraint point
ECS 219	13 ° 6 ' 12.2 " S	70 ° 53 ' 3.12 " E	1.00	350M constraint point
ECS 220	13 ° 6 ' 27.96 " S	70 ° 54 ' 2.45 " E	1.00	350M constraint point
ECS 221	13 ° 6 ' 43.54 " S	70 ° 55 ' 1.86 " E	1.00	350M constraint point



Point ID	Latitude (deg° min' sec")	Longitude (deg° min' sec")	Distance (M)	Article 76 criterion
ECS 222	13 ° 6 ' 58.97 " S	70 ° 56 ' 1.29 " E	1.00	350M constraint point
ECS 223	13 ° 7 ' 14.22 " S	70 ° 57 ' 0.79 " E	1.00	350M constraint point
ECS 224	13 ° 7 ' 29.3 " S	70 ° 58 ' 0.3 " E	1.00	350M constraint point
ECS 225	13 ° 7 ' 44.2 " S	70 ° 58 ' 59.88 " E	1.00	350M constraint point
ECS 226	13 ° 7 ' 58.94 " S	70 ° 59 ' 59.51 " E	1.00	350M constraint point
ECS 227	13 ° 8 ' 13.51 " S	71 ° 0 ' 59.16 " E	1.00	350M constraint point
ECS 228	13 ° 8 ' 27.91 " S	71 ° 1 ' 58.87 " E	1.00	350M constraint point
ECS 229	13 ° 8 ' 42.14 " S	71 ° 2 ' 58.64 " E	1.00	350M constraint point
ECS 230	13 ° 8 ' 56.2 " S	71 ° 3 ' 58.43 " E	1.00	350M constraint point
ECS 231	13 ° 9 ' 10.09 " S	71 ° 4 ' 58.28 " E	1.00	350M constraint point
ECS 232	13 ° 9 ' 23.8 " S	71 ° 5 ' 58.15 " E	1.00	350M constraint point
ECS 233	13 ° 9 ' 37.35 " S	71 ° 6 ' 58.08 " E	1.00	350M constraint point
ECS 234	13 ° 9 ' 50.72 " S	71 ° 7 ' 58.07 " E	1.00	350M constraint point
ECS 235	13 ° 10 ' 3.92 " S	71 ° 8 ' 58.06 " E	1.00	350M constraint point
ECS 236	13 ° 10 ' 16.95 " S	71 ° 9 ' 58.1 " E	1.00	350M constraint point
ECS 237	13 ° 10 ' 29.81 " S	71 ° 10 ' 58.19 " E	1.00	350M constraint point
ECS 238	13 ° 10 ' 42.5 " S	71 ° 11 ' 58.31 " E	1.00	350M constraint point
ECS 239	13 ° 10 ' 55.02 " S	71 ° 12 ' 58.49 " E	1.00	350M constraint point
ECS 240	13 ° 11 ' 7.36 " S	71 ° 13 ' 58.67 " E	1.00	350M constraint point
ECS 241	13 ° 11 ' 19.53 " S	71 ° 14 ' 58.9 " E	1.00	350M constraint point
ECS 242	13 ° 11 ' 31.53 " S	71 ° 15 ' 59.16 " E	1.00	350M constraint point
ECS 243	13 ° 11 ' 43.36 " S	71 ° 16 ' 59.48 " E	1.00	350M constraint point
ECS 244	13 ° 11 ' 55.02 " S	71 ° 17 ' 59.82 " E	1.00	350M constraint point
ECS 245	13 ° 12 ' 6.5 " S	71 ° 19 ' 0.22 " E	1.00	350M constraint point
ECS 246	13 ° 12 ' 17.81 " S	71 ° 20 ' 0.61 " E	1.00	350M constraint point
ECS 247	13 ° 12 ' 28.95 " S	71 ° 21 ' 1.07 " E	1.00	350M constraint point
ECS 248	13 ° 12 ' 39.91 " S	71 ° 22 ' 1.55 " E	1.00	350M constraint point
ECS 249	13 ° 12 ' 50.71 " S	71 ° 23 ' 2.05 " E	1.00	350M constraint point
ECS 250	13 ° 13 ' 1.33 " S	71 ° 24 ' 2.61 " E	1.00	350M constraint point
ECS 251	13 ° 13 ' 11.77 " S	71 ° 25 ' 3.18 " E	1.00	350M constraint point
ECS 252	13 ° 13 ' 22.05 " S	71 ° 26 ' 3.79 " E	1.00	350M constraint point
ECS 253	13 ° 13 ' 32.15 " S	71 ° 27 ' 4.44 " E	1.00	350M constraint point
ECS 254	13 ° 13 ' 42.08 " S	71 ° 28 ' 5.11 " E	1.00	350M constraint point
ECS 255	13 ° 13 ' 51.83 " S	71 ° 29 ' 5.81 " E	1.00	350M constraint point
ECS 256	13 ° 14 ' 1.42 " S	71 ° 30 ' 6.54 " E	1.00	350M constraint point
ECS 257	13 ° 14 ' 10.83 " S	71 ° 31 ' 7.32 " E	1.00	350M constraint point
ECS 258	13 ° 14 ' 20.06 " S	71 ° 32 ' 8.1 " E	1.00	350M constraint point
ECS 259	13 ° 14 ' 29.12 " S	71 ° 33 ' 8.91 " E	1.00	350M constraint point



Point ID	Latitude (deg° min' sec")	Longitude (deg° min' sec")	Distance (M)	Article 76 criterion
ECS 260	13 ° 14 ' 38 " S	71 ° 34 ' 9.75 " E	1.00	350M constraint point
ECS 261	13 ° 14 ' 46.72 " S	71 ° 35 ' 10.64 " E	1.00	350M constraint point
ECS 262	13 ° 14 ' 55.26 " S	71 ° 36 ' 11.53 " E	1.00	350M constraint point
ECS 263	13 ° 15 ' 3.63 " S	71 ° 37 ' 12.45 " E	1.00	350M constraint point
ECS 264	13 ° 15 ' 11.81 " S	71 ° 38 ' 13.4 " E	1.00	350M constraint point
ECS 265	13 ° 15 ' 19.84 " S	71 ° 39 ' 14.37 " E	1.00	350M constraint point
ECS 266	13 ° 15 ' 27.68 " S	71 ° 40 ' 15.37 " E	1.00	350M constraint point
ECS 267	13 ° 15 ' 35.34 " S	71 ° 41 ' 16.4 " E	1.00	350M constraint point
ECS 268	13 ° 15 ' 39.74 " S	71 ° 41 ' 52 " E	0.58	350M constraint point
ECS 269	13 ° 15 ' 47.13 " S	71 ° 42 ' 53.05 " E	1.00	350M constraint point
ECS 270	13 ° 15 ' 54.35 " S	71 ° 43 ' 54.14 " E	1.00	350M constraint point
ECS 271	13 ° 16 ' 1.39 " S	71 ° 44 ' 55.22 " E	1.00	350M constraint point
ECS 272	13 ° 16 ' 8.26 " S	71 ° 45 ' 56.36 " E	1.00	350M constraint point
ECS 273	13 ° 16 ' 14.96 " S	71 ° 46 ' 57.5 " E	1.00	350M constraint point
ECS 274	13 ° 16 ' 21.48 " S	71 ° 47 ' 58.67 " E	1.00	350M constraint point
ECS 275	13 ° 16 ' 27.83 " S	71 ° 48 ' 59.86 " E	1.00	350M constraint point
ECS 276	13 ° 16 ' 34 " S	71 ° 50 ' 1.05 " E	1.00	350M constraint point
ECS 277	13 ° 16 ' 40 " S	71 ° 51 ' 2.27 " E	1.00	350M constraint point
ECS 278	13 ° 16 ' 45.82 " S	71 ° 52 ' 3.5 " E	1.00	350M constraint point
ECS 279	13 ° 16 ' 51.46 " S	71 ° 53 ' 4.74 " E	1.00	350M constraint point
ECS 280	13 ° 16 ' 56.93 " S	71 ° 54 ' 6.02 " E	1.00	350M constraint point
ECS 281	13 ° 17 ' 2.23 " S	71 ° 55 ' 7.3 " E	1.00	350M constraint point
ECS 282	13 ° 17 ' 7.35 " S	71 ° 56 ' 8.6 " E	1.00	350M constraint point
ECS 283	13 ° 17 ' 12.3 " S	71 ° 57 ' 9.9 " E	1.00	350M constraint point
ECS 284	13 ° 17 ' 17.07 " S	71 ° 58 ' 11.24 " E	1.00	350M constraint point
ECS 285	13 ° 17 ' 21.67 " S	71 ° 59 ' 12.59 " E	1.00	350M constraint point
ECS 286	13 ° 17 ' 26.09 " S	72 ° 0 ' 13.95 " E	1.00	350M constraint point
ECS 287	13 ° 17 ' 30.33 " S	72 ° 1 ' 15.34 " E	1.00	350M constraint point
ECS 288	13 ° 17 ' 34.41 " S	72 ° 2 ' 16.72 " E	1.00	350M constraint point
ECS 289	13 ° 17 ' 38.3 " S	72 ° 3 ' 18.14 " E	1.00	350M constraint point
ECS 290	13 ° 17 ' 42.02 " S	72 ° 4 ' 19.55 " E	1.00	350M constraint point
ECS 291	13 ° 17 ' 45.56 " S	72 ° 5 ' 20.97 " E	1.00	350M constraint point
ECS 292	13 ° 17 ' 48.93 " S	72 ° 6 ' 22.41 " E	1.00	350M constraint point
ECS 293	13 ° 17 ' 52.13 " S	72 ° 7 ' 23.85 " E	1.00	350M constraint point
ECS 294	13 ° 17 ' 55.14 " S	72 ° 8 ' 25.32 " E	1.00	350M constraint point
ECS 295	13 ° 17 ' 57.99 " S	72 ° 9 ' 26.76 " E	1.00	350M constraint point
ECS 296	13 ° 18 ' 0.65 " S	72 ° 10 ' 28.25 " E	1.00	350M constraint point
ECS 297	13 ° 18 ' 3.22 " S	72 ° 11 ' 29.72 " E	1.00	350M constraint point



Point ID	Latitude (deg° min' sec")	Longitude (deg° min' sec")	Distance (M)	Article 76 criterion
ECS 298	13 ° 18 ' 5.6 " S	72 ° 12 ' 31.19 " E	1.00	350M constraint point
ECS 299	13 ° 18 ' 7.8 " S	72 ° 13 ' 32.69 " E	1.00	350M constraint point
ECS 300	13 ° 18 ' 9.84 " S	72 ° 14 ' 34.18 " E	1.00	350M constraint point
ECS 301	13 ° 18 ' 11.69 " S	72 ° 15 ' 35.71 " E	1.00	350M constraint point
ECS 302	13 ° 18 ' 13.38 " S	72 ° 16 ' 37.2 " E	1.00	350M constraint point
ECS 303	13 ° 18 ' 14.88 " S	72 ° 17 ' 38.72 " E	1.00	350M constraint point
ECS 304	13 ° 18 ' 16.21 " S	72 ° 18 ' 40.25 " E	1.00	350M constraint point
ECS 305	13 ° 18 ' 17.36 " S	72 ° 19 ' 41.77 " E	1.00	350M constraint point
ECS 306	13 ° 18 ' 18.34 " S	72 ° 20 ' 43.3 " E	1.00	350M constraint point
ECS 307	13 ° 18 ' 19.14 " S	72 ° 21 ' 44.82 " E	1.00	350M constraint point
ECS 308	13 ° 18 ' 19.77 " S	72 ° 22 ' 46.34 " E	1.00	350M constraint point
ECS 309	13 ° 18 ' 20.22 " S	72 ° 23 ' 47.87 " E	1.00	350M constraint point
ECS 310	13 ° 18 ' 20.49 " S	72 ° 24 ' 49.39 " E	1.00	350M constraint point
ECS 311	13 ° 18 ' 20.6 " S	72 ° 25 ' 50.91 " E	1.00	350M constraint point
ECS 312	13 ° 18 ' 20.52 " S	72 ° 26 ' 52.44 " E	1.00	350M constraint point
ECS 313	13 ° 18 ' 20.27 " S	72 ° 27 ' 53.96 " E	1.00	350M constraint point
ECS 314	13 ° 18 ' 19.84 " S	72 ° 28 ' 55.48 " E	1.00	350M constraint point
ECS 315	13 ° 18 ' 19.24 " S	72 ° 29 ' 57.03 " E	1.00	350M constraint point
ECS 316	13 ° 18 ' 18.46 " S	72 ° 30 ' 58.56 " E	1.00	350M constraint point
ECS 317	13 ° 18 ' 17.5 " S	72 ° 32 ' 0.08 " E	1.00	350M constraint point
ECS 318	13 ° 18 ' 16.37 " S	72 ° 33 ' 1.6 " E	1.00	350M constraint point
ECS 319	13 ° 18 ' 15.07 " S	72 ° 34 ' 3.13 " E	1.00	350M constraint point
ECS 320	13 ° 18 ' 13.59 " S	72 ° 35 ' 4.62 " E	1.00	350M constraint point
ECS 321	13 ° 18 ' 11.93 " S	72 ° 36 ' 6.15 " E	1.00	350M constraint point
ECS 322	13 ° 18 ' 10.09 " S	72 ° 37 ' 7.64 " E	1.00	350M constraint point
ECS 323	13 ° 18 ' 8.09 " S	72 ° 38 ' 9.14 " E	1.00	350M constraint point
ECS 324	13 ° 18 ' 5.9 " S	72 ° 39 ' 10.63 " E	1.00	350M constraint point
ECS 325	13 ° 18 ' 3.54 " S	72 ° 40 ' 12.13 " E	1.00	350M constraint point
ECS 326	13 ° 18 ' 1.01 " S	72 ° 41 ' 13.6 " E	1.00	350M constraint point
ECS 327	13 ° 17 ' 58.29 " S	72 ° 42 ' 15.1 " E	1.00	350M constraint point
ECS 328	13 ° 17 ' 55.41 " S	72 ° 43 ' 16.54 " E	1.00	350M constraint point
ECS 329	13 ° 17 ' 52.34 " S	72 ° 44 ' 18 " E	1.00	350M constraint point
ECS 330	13 ° 17 ' 49.11 " S	72 ° 45 ' 19.45 " E	1.00	350M constraint point
ECS 331	13 ° 17 ' 45.7 " S	72 ° 46 ' 20.86 " E	1.00	350M constraint point
ECS 332	13 ° 17 ' 44.29 " S	72 ° 46 ' 44.4 " E	0.38	60 M chord / 350M constraint point
ECS 333	13 ° 8 ' 57.46 " S	73 ° 2 ' 29.58 " E	17.68	60 M distance criterion
ECS 334	13 ° 8 ' 51.21 " S	73 ° 2 ' 57.68 " E	0.47	60 M distance criterion



Point ID	Latitude (deg° min' sec")	Longitude (deg° min' sec")	Distance (M)	Article 76 criterion
ECS 335	13 ° 8 ' 36.89 " S	73 ° 3 ' 57.41 " E	1.00	60 M distance criterion
ECS 336	13 ° 8 ' 21.59 " S	73 ° 4 ' 56.91 " E	1.00	60 M distance criterion
ECS 337	13 ° 8 ' 5.32 " S	73 ° 5 ' 56.12 " E	1.00	60 M distance criterion
ECS 338	13 ° 7 ' 48.08 " S	73 ° 6 ' 55.04 " E	1.00	60 M distance criterion
ECS 339	13 ° 7 ' 29.89 " S	73 ° 7 ' 53.65 " E	1.00	60 M distance criterion
ECS 340	13 ° 7 ' 10.73 " S	73 ° 8 ' 51.96 " E	1.00	60 M distance criterion
ECS 341	13 ° 6 ' 50.61 " S	73 ° 9 ' 49.91 " E	1.00	60 M distance criterion
ECS 342	13 ° 6 ' 29.55 " S	73 ° 10 ' 47.53 " E	1.00	60 M distance criterion
ECS 343	13 ° 6 ' 7.55 " S	73 ° 11 ' 44.77 " E	1.00	60 M distance criterion
ECS 344	13 ° 5 ' 44.61 " S	73 ° 12 ' 41.63 " E	1.00	60 M distance criterion
ECS 345	13 ° 5 ' 20.74 " S	73 ° 13 ' 38.1 " E	1.00	60 M distance criterion
ECS 346	13 ° 4 ' 55.95 " S	73 ° 14 ' 34.13 " E	1.00	60 M distance criterion
ECS 347	13 ° 4 ' 30.25 " S	73 ° 15 ' 29.72 " E	1.00	60 M distance criterion
ECS 348	13 ° 4 ' 3.64 " S	73 ° 16 ' 24.9 " E	1.00	60 M distance criterion
ECS 349	13 ° 3 ' 36.12 " S	73 ° 17 ' 19.58 " E	1.00	60 M distance criterion
ECS 350	13 ° 3 ' 7.72 " S	73 ° 18 ' 13.8 " E	1.00	60 M distance criterion
ECS 351	13 ° 2 ' 38.43 " S	73 ° 19 ' 7.52 " E	1.00	60 M distance criterion
ECS 352	13 ° 2 ' 8.26 " S	73 ° 20 ' 0.72 " E	1.00	60 M distance criterion
ECS 353	13 ° 1 ' 37.22 " S	73 ° 20 ' 53.43 " E	1.00	60 M distance criterion
ECS 354	13 ° 1 ' 5.33 " S	73 ° 21 ' 45.59 " E	1.00	60 M distance criterion
ECS 355	13 ° 0 ' 32.58 " S	73 ° 22 ' 37.17 " E	1.00	60 M distance criterion
ECS 356	12 ° 59 ' 59 " S	73 ° 23 ' 28.2 " E	1.00	60 M distance criterion
ECS 357	12 ° 59 ' 24.58 " S	73 ° 24 ' 18.65 " E	1.00	60 M distance criterion
ECS 358	12 ° 58 ' 49.34 " S	73 ° 25 ' 8.48 " E	1.00	60 M distance criterion
ECS 359	12 ° 58 ' 13.28 " S	73 ° 25 ' 57.75 " E	1.00	60 M distance criterion
ECS 360	12 ° 57 ' 36.43 " S	73 ° 26 ' 46.37 " E	1.00	60 M distance criterion
ECS 361	12 ° 56 ' 58.78 " S	73 ° 27 ' 34.35 " E	1.00	60 M distance criterion
ECS 362	12 ° 56 ' 20.35 " S	73 ° 28 ' 21.67 " E	1.00	60 M distance criterion
ECS 363	12 ° 55 ' 41.15 " S	73 ° 29 ' 8.34 " E	1.00	60 M distance criterion
ECS 364	12 ° 55 ' 1.19 " S	73 ° 29 ' 54.34 " E	1.00	60 M distance criterion
ECS 365	12 ° 54 ' 20.48 " S	73 ° 30 ' 39.63 " E	1.00	60 M distance criterion
ECS 366	12 ° 53 ' 39.04 " S	73 ° 31 ' 24.24 " E	1.00	60 M distance criterion
ECS 367	12 ° 52 ' 56.87 " S	73 ° 32 ' 8.13 " E	1.00	60 M distance criterion
ECS 368	12 ° 52 ' 13.98 " S	73 ° 32 ' 51.28 " E	1.00	60 M distance criterion
ECS 369	12 ° 51 ' 30.4 " S	73 ° 33 ' 33.68 " E	1.00	60 M distance criterion
ECS 370	12 ° 50 ' 46.12 " S	73 ° 34 ' 15.38 " E	1.00	60 M distance criterion
ECS 371	12 ° 50 ' 1.17 " S	73 ° 34 ' 56.3 " E	1.00	60 M distance criterion
ECS 372	12 ° 49 ' 15.55 " S	73 ° 35 ' 36.43 " E	1.00	60 M distance criterion



Point ID	Latitude (deg° min' sec")	Longitude (deg° min' sec")	Distance (M)	Article 76 criterion
ECS 373	12 ° 48 ' 29.28 " S	73 ° 36 ' 15.79 " E	1.00	60 M distance criterion
ECS 374	12 ° 47 ' 42.36 " S	73 ° 36 ' 54.32 " E	1.00	60 M distance criterion
ECS 375	12 ° 46 ' 54.83 " S	73 ° 37 ' 32.09 " E	1.00	60 M distance criterion
ECS 376	12 ° 46 ' 6.68 " S	73 ° 38 ' 9.03 " E	1.00	60 M distance criterion
ECS 377	12 ° 45 ' 17.94 " S	73 ° 38 ' 45.12 " E	1.00	60 M distance criterion
ECS 378	12 ° 44 ' 28.61 " S	73 ° 39 ' 20.41 " E	1.00	60 M distance criterion
ECS 379	12 ° 43 ' 38.71 " S	73 ° 39 ' 54.83 " E	1.00	60 M distance criterion
ECS 380	12 ° 42 ' 48.25 " S	73 ° 40 ' 28.39 " E	1.00	60 M distance criterion
ECS 381	12 ° 41 ' 57.24 " S	73 ° 41 ' 1.1 " E	1.00	60 M distance criterion
ECS 382	12 ° 41 ' 5.71 " S	73 ° 41 ' 32.94 " E	1.00	60 M distance criterion
ECS 383	12 ° 40 ' 13.67 " S	73 ° 42 ' 3.89 " E	1.00	60 M distance criterion
ECS 384	12 ° 39 ' 21.12 " S	73 ° 42 ' 33.94 " E	1.00	60 M distance criterion
ECS 385	12 ° 38 ' 28.09 " S	73 ° 43 ' 3.11 " E	1.00	60 M distance criterion
ECS 386	12 ° 37 ' 34.59 " S	73 ° 43 ' 31.34 " E	1.00	60 M distance criterion
ECS 387	12 ° 36 ' 40.63 " S	73 ° 43 ' 58.7 " E	1.00	60 M distance criterion
ECS 388	12 ° 35 ' 46.23 " S	73 ° 44 ' 25.09 " E	1.00	60 M distance criterion
ECS 389	12 ° 34 ' 51.4 " S	73 ° 44 ' 50.58 " E	1.00	60 M distance criterion
ECS 390	12 ° 33 ' 56.16 " S	73 ° 45 ' 15.13 " E	1.00	60 M distance criterion
ECS 391	12 ° 33 ' 0.54 " S	73 ° 45 ' 38.73 " E	1.00	60 M distance criterion
ECS 392	12 ° 32 ' 4.53 " S	73 ° 46 ' 1.39 " E	1.00	60 M distance criterion
ECS 393	12 ° 31 ' 8.16 " S	73 ° 46 ' 23.08 " E	1.00	60 M distance criterion
ECS 394	12 ° 30 ' 11.44 " S	73 ° 46 ' 43.82 " E	1.00	60 M distance criterion
ECS 395	12 ° 29 ' 14.38 " S	73 ° 47 ' 3.6 " E	1.00	60 M distance criterion
ECS 396	12 ° 28 ' 17.01 " S	73 ° 47 ' 22.38 " E	1.00	60 M distance criterion
ECS 397	12 ° 27 ' 19.34 " S	73 ° 47 ' 40.21 " E	1.00	60 M distance criterion
ECS 398	12 ° 26 ' 21.39 " S	73 ° 47 ' 57.04 " E	1.00	60 M distance criterion
ECS 399	12 ° 25 ' 23.17 " S	73 ° 48 ' 12.89 " E	1.00	60 M distance criterion
ECS 400	12 ° 24 ' 24.69 " S	73 ° 48 ' 27.75 " E	1.00	60 M distance criterion
ECS 401	12 ° 23 ' 25.99 " S	73 ° 48 ' 41.59 " E	1.00	60 M distance criterion
ECS 402	12 ° 22 ' 27.06 " S	73 ° 48 ' 54.48 " E	1.00	60 M distance criterion
ECS 403	12 ° 21 ' 27.93 " S	73 ° 49 ' 6.34 " E	1.00	60 M distance criterion
ECS 404	12 ° 20 ' 28.62 " S	73 ° 49 ' 17.19 " E	1.00	60 M distance criterion
ECS 405	12 ° 19 ' 29.13 " S	73 ° 49 ' 27.05 " E	1.00	60 M distance criterion
ECS 406	12 ° 18 ' 29.49 " S	73 ° 49 ' 35.87 " E	1.00	60 M distance criterion
ECS 407	12 ° 17 ' 29.71 " S	73 ° 49 ' 43.69 " E	1.00	60 M distance criterion
ECS 408	12 ° 16 ' 29.81 " S	73 ° 49 ' 50.51 " E	1.00	60 M distance criterion
ECS 409	12 ° 15 ' 29.82 " S	73 ° 49 ' 56.3 " E	1.00	60 M distance criterion
ECS 410	12 ° 14 ' 29.73 " S	73 ° 50 ' 1.08 " E	1.00	60 M distance criterion



Point ID	Latitude (deg° min' sec")	Longitude (deg° min' sec")	Distance (M)	Article 76 criterion
ECS 411	12 ° 13 ' 29.57 " S	73 ° 50 ' 4.84 " E	1.00	60 M distance criterion
ECS 412	12 ° 12 ' 29.36 " S	73 ° 50 ' 7.56 " E	1.00	60 M distance criterion
ECS 413	12 ° 11 ' 29.11 " S	73 ° 50 ' 9.29 " E	1.00	60 M distance criterion
ECS 414	12 ° 10 ' 28.85 " S	73 ° 50 ' 9.98 " E	1.00	60 M distance criterion
ECS 415	11 ° 36 ' 45.66 " S	73 ° 50 ' 10.64 " E	33.57	60 M distance criterion
ECS 416	11 ° 35 ' 45.39 " S	73 ° 50 ' 10.58 " E	1.00	60 M distance criterion
ECS 417	11 ° 34 ' 45.13 " S	73 ° 50 ' 9.51 " E	1.00	60 M distance criterion
ECS 418	11 ° 33 ' 44.89 " S	73 ° 50 ' 7.42 " E	1.00	60 M distance criterion
ECS 419	11 ° 32 ' 44.69 " S	73 ° 50 ' 4.32 " E	1.00	60 M distance criterion
ECS 420	11 ° 31 ' 44.56 " S	73 ° 50 ' 0.2 " E	1.00	60 M distance criterion
ECS 421	11 ° 30 ' 44.5 " S	73 ° 49 ' 55.07 " E	1.00	60 M distance criterion
ECS 422	11 ° 29 ' 44.53 " S	73 ° 49 ' 48.91 " E	1.00	60 M distance criterion
ECS 423	11 ° 28 ' 44.67 " S	73 ° 49 ' 41.74 " E	1.00	60 M distance criterion
ECS 424	11 ° 27 ' 44.94 " S	73 ° 49 ' 33.59 " E	1.00	60 M distance criterion
ECS 425	11 ° 26 ' 45.36 " S	73 ° 49 ' 24.39 " E	1.00	60 M distance criterion
ECS 426	11 ° 25 ' 45.93 " S	73 ° 49 ' 14.22 " E	1.00	60 M distance criterion
ECS 427	11 ° 24 ' 46.67 " S	73 ° 49 ' 3.05 " E	1.00	60 M distance criterion
ECS 428	11 ° 23 ' 47.61 " S	73 ° 48 ' 50.85 " E	1.00	60 M distance criterion
ECS 429	11 ° 22 ' 48.76 " S	73 ° 48 ' 37.67 " E	1.00	60 M distance criterion
ECS 430	10 ° 33 ' 1.48 " S	73 ° 41 ' 45.32 " E	50.02	60 M distance criterion chord / Baseline +200M