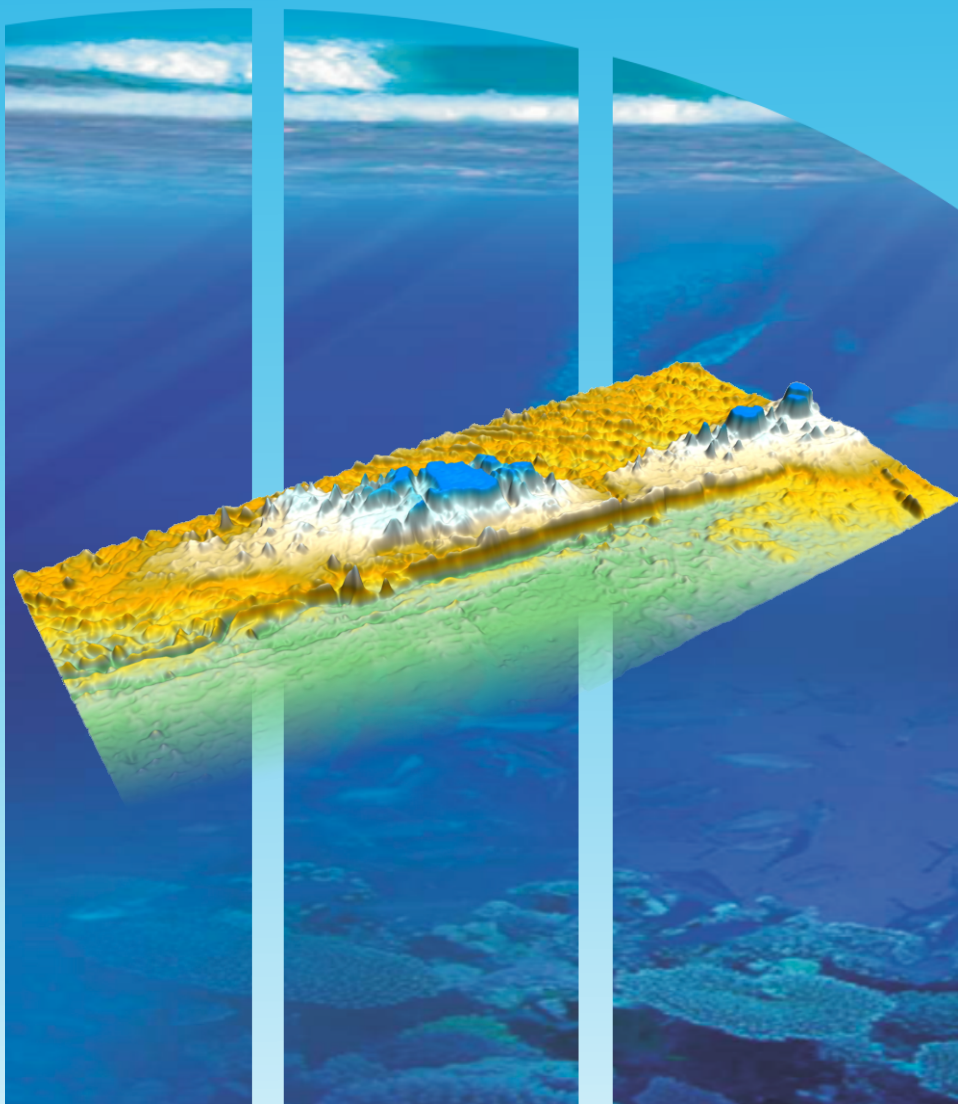


Republic of Mauritius

United Nations Convention on the Law of the Sea

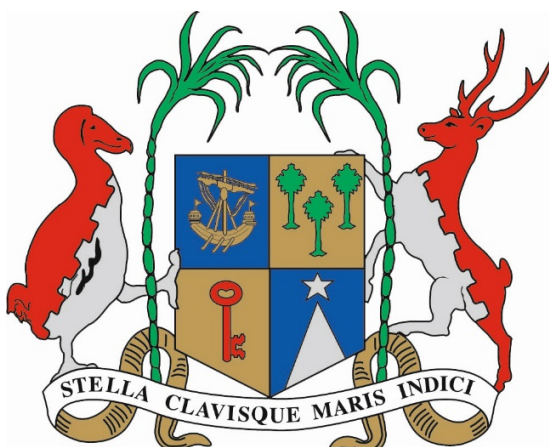
**Submission by the Republic of Mauritius to the
Commission on the Limits of the Continental Shelf concerning the
Northern Chagos Archipelago Region**



Executive Summary

**MCNS-ES-DOC
April 2022**

REPUBLIC OF MAURITIUS



Submission by the Republic of Mauritius to the Commission on the Limits of the Continental Shelf concerning the Northern Chagos Archipelago Region

EXECUTIVE SUMMARY

April 2022

MCNS-ES-DOC



PREFACE

This Submission was prepared by the following Ministries/Department of the Government of the Republic of Mauritius:

Prime Minister's Office, Department for Continental Shelf, Maritime Zones Administration & Exploration.
Ministry of Foreign Affairs, Regional Integration & International Trade, Permanent Representative to the United Nations
Attorney-General's Office

The following persons have acted and/or will act as advisers to the Government of the Republic of Mauritius in the preparation of the Submission by the Republic of Mauritius concerning the extended continental shelf in the Northern Chagos Archipelago Region:

Mr Paul S Reichler, Counsel
Professor Philippe Sands, QC, GCSK



TABLE OF CONTENTS

1.	Introduction	5
2.	Outer Limits of the Continental Shelf in the Northern Chagos Archipelago Region	7
3.	Maps and Coordinates	9
4.	Provisions of Article 76 Invoked	11
5.	Commission Members Who Provided Advice on the Submission	11
6.	Sovereignty - the Chagos Archipelago is an integral part of the Territory of Mauritius	11
7.	Existing and Outstanding Maritime Boundaries	14
8.	Overview of the Continental Shelf in the Northern Chagos Archipelago Region	14
9.	Note of Authentication	16
10.	Annexes	18



ANNEXES

Annex 1: Table Listing the Fixed Points Defining the Outer Limits of the Continental Shelf in the Northern Chagos Archipelago Region (Decimal Degrees)

MCNS-ES-ANNEX 1

Annex 2: Table Listing the Fixed Points Defining the Outer Limits of the Continental Shelf in the Northern Chagos Archipelago Region (Degrees, Minutes and Seconds)

MCNS-ES-ANNEX 2

MAPS

(A0 Executive Summary map supplied separately)

The Outer Limits of the Continental Shelf
in the Northern Chagos Archipelago Region

MCNS-ES-MAP-1

The Outer Limits of the Continental Shelf
in the Northern Chagos Archipelago Region
displaying the provisions of Article 76 invoked.

MCNS-ES-MAP-2



1. INTRODUCTION

- 1-1** This Executive Summary has been prepared as part of the Submission by the Republic of Mauritius to the Commission on the Limits of the Continental Shelf ('the Commission') pursuant to paragraph 8 of Article 76 of the 1982 United Nations Convention on the Law of the Sea ('the Convention') in support of the establishment by the Republic of Mauritius of the outer limits of the continental shelf that lie beyond 200 nautical miles (M) from the baselines from which the breadth of the territorial sea of the Republic of Mauritius is measured in the Northern Chagos Archipelago Region.
- 1-2** The Republic of Mauritius consists of a group of islands in the Indian Ocean. The main Island of Mauritius is located at longitude 57°30' east, and latitude 20°00' south, approximately 900km east of Madagascar and is part of the Mascarene Islands. The total land area of the Republic of Mauritius is approximately 2,000km². Under the Constitution of Mauritius, the territory of Mauritius includes, in addition to the main island, the islands of Cargados Carajos (the St Brandon Group of 16 Islands and Islets) located some 402km north of the main Island of Mauritius, Rodrigues Island located 560km north-east, the Agalega Islands located 933km north, Tromelin located 560km north-west and the Chagos Archipelago located at 06°26' south 72°00' east, approximately 2200km north-east of the main Island of Mauritius.
- 1-3** The Republic of Mauritius is a party to the Convention, which it signed on the day it was opened for signature on 10 December 1982, and subsequently ratified on 4 November 1994. The Maritime Zones Act 2005 provides that the provisions of the Convention have the force of law in the Republic of Mauritius, including the Chagos Archipelago, and establishes maritime zones in accordance with the requirements of the Convention, including provisions defining the outer limits of the continental shelf.



1-4 Under Article 4 of Annex II to the Convention, as supplemented by the decisions of the Eleventh (SPLOS/72) and Eighteenth (SPLOS/183) meetings of the State Parties to the Convention respectively regarding the ten-year period established by Article 4 of Annex II to the Convention, a coastal State for which the Convention entered into force before 13 May 1999 is required to submit particulars of the outer limits of the continental shelf to the Commission by 13 May 2009. In accordance with the decision of SPLOS/183, the Republic of Mauritius submitted Preliminary Information concerning the Extended Continental Shelf in the Chagos Archipelago Region on 6 May 2009 and indicated that it would make a submission in 2012. Subsequently, the Republic of Mauritius requested additional time to make its submission.

1-5 This Submission is a partial submission concerning only the continental shelf in the Northern Chagos Archipelago Region and is one of a number of partial submissions made by the Republic of Mauritius to date. In its partial submission concerning the Southern Chagos Archipelago of 26 March 2019 (MCSS-ES-DOC), Mauritius informed the CLCS that:

“The Republic of Mauritius also intends to make another partial submission concerning the continental shelf in the Northern Chagos Archipelago Region in due course. However, since there is a likely overlap with the claim for an extended continental shelf submitted by the Republic of Maldives (MAL-ES-DOC) and the representations made by the Republic of Mauritius (Note No: 10887/10 and Note No. 11031/11), the Republic of Mauritius is envisaging bilateral talks with the Republic of Maldives with a view to reaching an agreement both in respect of the maritime delimitation and the extended continental shelf.”

1-6 Unfortunately, the bilateral talks with Maldives favoured by Mauritius did not materialise, due to Maldives’ unwillingness to engage with Mauritius.



- 1-7** In its Amended Preliminary Information submission concerning the Northern Chagos Archipelago of 24 May 2021, Mauritius informed the CLCS that Mauritius was "... in the process of finalising its submission for the CLCS concerning the Northern Chagos Archipelago Region, which covers some of the area to be delimited by a Special Chamber of the International Tribunal for the Law of the Sea (ITLOS) and intends to make a full Submission in the Northern Chagos Archipelago in due course."
- 1-8** The Republic of Mauritius has for the purposes of preparing this Submission, applied the relevant provisions of Article 76 of the Convention, together with the Rules of Procedure of the Commission on the Limits of the Continental Shelf (CLCS/40/Rev.1) adopted by the Commission on 17 April 2008 ('Rules of Procedure') and, the recommendations contained in the Scientific and Technical Guidelines of the Commission on the Limits of the Continental Shelf (CLCS/11) adopted by the Commission on 13 May 1999 ('the Guidelines').
- 1-9** In accordance with the specifications of the Commission set out in Annex III to the Rules of Procedure and paragraphs 9.1.3 to 9.1.6 of the Guidelines, this Submission consists of three separate parts comprising an Executive Summary, a core analytical and descriptive part of the submission ('the Main Body'), and a part containing all required supporting scientific and technical data arranged in a series of annexes ('supporting scientific and technical data').

2. OUTER LIMITS OF THE CONTINENTAL SHELF IN THE NORTHERN CHAGOS ARCHIPELAGO REGION

- 2-1** As provided for under paragraph 1 of Article 76 of the Convention, the Republic of Mauritius has a continental shelf comprising the seabed and subsoil of the submarine areas that extends beyond its territorial sea throughout the natural

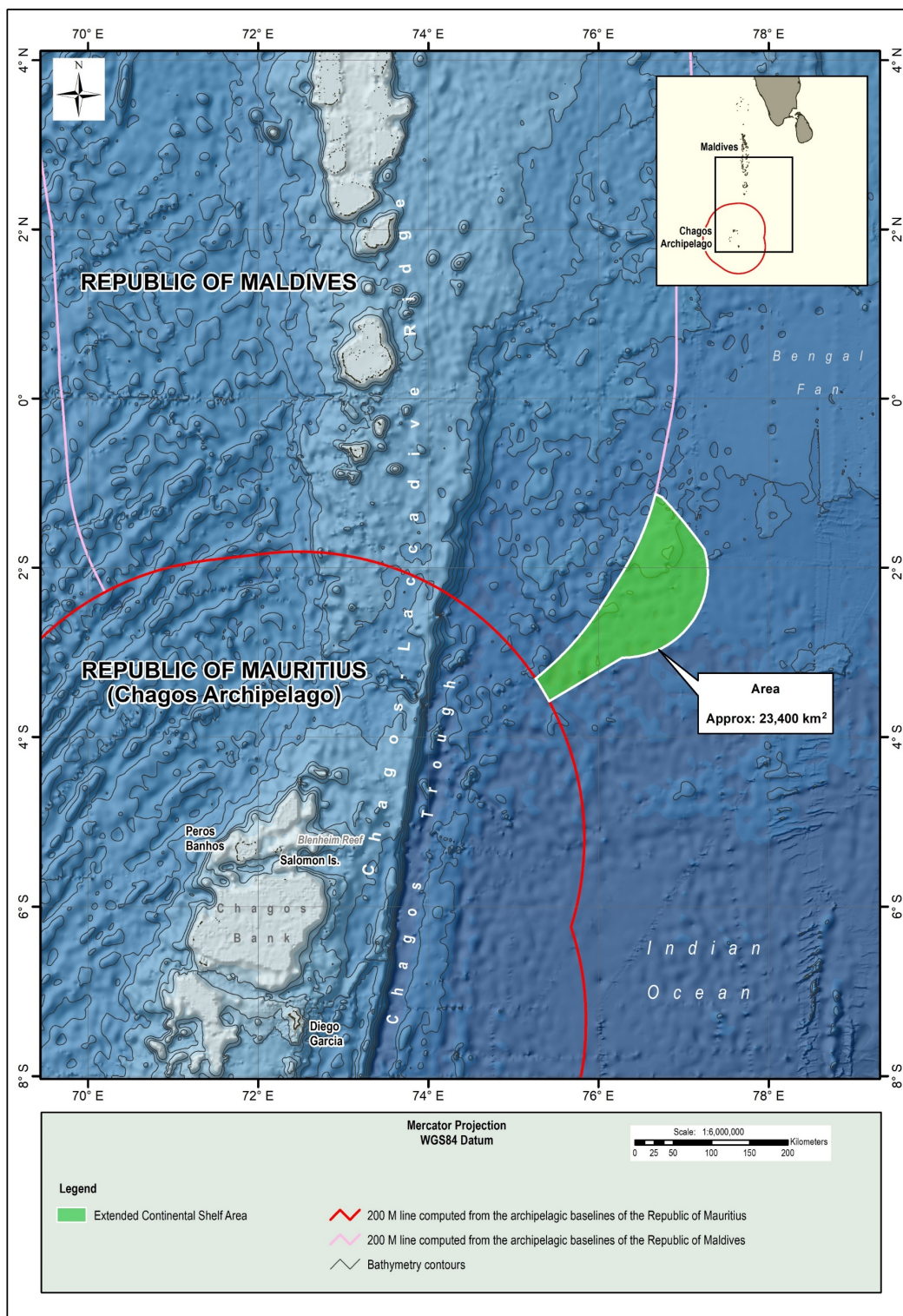


- prolongation of its land territory to the outer edge of the continental margin, up to the limits provided for in paragraphs 4 to 6 of Article 76 of the Convention or, to a distance of 200M from the territorial sea baselines where the outer edge of the continental margin does not extend up to that distance.
- 2-2** Paragraphs 4 to 6 of Article 76 of the Convention set out the manner in which a coastal State may establish the outer edge of its continental margin and its continental shelf, wherever that margin extends beyond 200M measured from the territorial sea baselines.
- 2-3** As set out in paragraph 7 of Article 76 of the Convention, a coastal State is to delineate the outer limits of the continental shelf by straight lines not exceeding 60M in length, connecting fixed points defined by coordinates of latitude and longitude.
- 2-4** The data submitted by the Republic of Mauritius in support of this Submission establish that the outer edge of the continental margin representing the natural prolongation of the relevant land territory (Peros Banhos, Salomon Islands and Blenheim Reef) in the Northern Chagos Archipelago Region. The outer edge of the continental margin extends beyond 200M measured from the archipelagic baselines joining the outermost points of the islands of Peros Banhos and Blenheim reef established by the Republic of Mauritius in accordance with Article 47 of the Convention.
- 2-5** Section 7 of this Executive Summary provides an overview of the extended continental shelf in the Northern Chagos Archipelago Region determined by the Republic of Mauritius, including an outline of the Article 76 fixed points used to construct the outer limit line in this region.



3. MAPS AND COORDINATES

- 3-1** Two maps are included in this Executive Summary as **MCNS-ES-MAP-1** and **MCNS-ES-MAP-2** respectively. The first map provides an overview of the area of extended continental shelf in the Northern Chagos Archipelago Region. The second map provides an overview of the area of extended continental shelf, together with the location of the Article 76 fixed points that define the outer limit of the continental shelf. These maps are also provided to scale in A0-size.
- 3-2** The lists of coordinates of the Article 76 fixed points that define the outer limit of the continental shelf submitted by the Republic of Mauritius are supplied in two annexes.
- 3-3** Annex 1 (**MCNS-ES-ANNEX 1**) lists the fixed points defining the outer limit of the extended continental shelf in decimal degrees. Annex 2 (**MCNS-ES-ANNEX 2**) lists the same points in degrees, minutes and seconds. The provisions of Article 76 invoked to define each fixed point, as well as the distance between adjacent points, are also specified in both annexes. Wherever there is discrepancy between the two formats of the coordinates for a particular Article 76 fixed point, the Republic of Mauritius relies upon the coordinates farthest seaward from its archipelagic baselines, subject to compliance with the requirements of the relevant provisions of Article 76 of the Convention.



MCNS-ES-MAP-1 The Outer Limits of the Continental Shelf in the Northern Chagos Archipelago Region.

Submission of the Republic of Mauritius concerning the Northern Chagos Archipelago Region



4. PROVISIONS OF ARTICLE 76 INVOKED

The Republic of Mauritius invokes paragraphs 4 (a)(ii), 4 (b), 6 and 7 of Article 76 of the Convention in support of this Submission concerning the continental shelf in the Northern Chagos Archipelago Region.

5. COMMISSION MEMBERS WHO PROVIDED ADVICE ON THE SUBMISSION

No current member of the Commission has assisted in the preparation of this submission.

6. SOVEREIGNTY - THE CHAGOS ARCHIPELAGO IS AN INTEGRAL PART OF THE TERRITORY OF MAURITIUS

6-1 In the Preliminary Information submitted by the Republic of Mauritius on 6 May 2009, it was stated that a dispute existed between the Republic of Mauritius and the United Kingdom of Great Britain and Northern Ireland with regard to the Chagos Archipelago. This arose following the detachment of the Chagos Archipelago by the United Kingdom from Mauritius prior to its accession to independence and the purported creation by the United Kingdom of the so-called “British Indian Ocean Territory”.

6-2 The Chagos Archipelago is, and has always formed, part of the territory of the Republic of Mauritius. Mauritian sovereignty over the Chagos Archipelago has been definitively determined as a matter of international law by the International Court of Justice (ICJ) and a Special Chamber of the ITLOS.



6-3 In its Advisory Opinion of 25 February 2019 on the *Legal Consequences of the Separation of the Chagos Archipelago from Mauritius in 1965*, the ICJ determined that:

- “at the time of its detachment from Mauritius” the “Chagos Archipelago was clearly an integral part of that non-self-governing territory”;
- the United Kingdom’s purported detachment of the Chagos Archipelago “was not based on the free and genuine expression of the will of the people concerned”;
- at the time of the purported detachment, “obligations arising under international law and reflected in the resolutions adopted by the General Assembly during the process of decolonization of Mauritius require[d] the United Kingdom, as the administering Power, to respect the territorial integrity of that country, including the Chagos Archipelago”;
- the “detachment” was therefore “unlawful” such that “the process of decolonization of Mauritius was not lawfully completed when Mauritius acceded to independence in 1968”;
- “the United Kingdom’s continued administration of the Chagos Archipelago constitutes a wrongful act entailing the international responsibility of that State”;
- this “unlawful act” is “of a continuing character” and “the United Kingdom is under an obligation to bring to an end its administration of the Chagos Archipelago as rapidly as possible, thereby enabling Mauritius to complete the decolonization of its territory in a manner consistent with the right of peoples to self-determination”; and



- “all Member States [of the United Nations] are under an obligation to cooperate with the United Nations in order to complete the decolonization of Mauritius.”

6-4 On 22 May 2019, the UN General Assembly adopted resolution 73/295 which fully endorsed the determinations of the ICJ. By an overwhelming majority, UN Member States confirmed that the Chagos Archipelago is an integral part of the Republic of Mauritius and demanded that the United Kingdom terminate its unlawful administration of the Chagos Archipelago within six months, that is, no later than 22 November 2019.

6-5 In its Judgment of 28 January 2021 in the *Dispute concerning delimitation of the maritime boundary between Mauritius and Maldives in the Indian Ocean (Mauritius/Maldives)*, a Special Chamber of ITLOS ruled that:

- “it is inconceivable that the United Kingdom, whose administration over the Chagos Archipelago constitutes a wrongful act of a continuing character and thus must be brought to an end as rapidly as possible, and yet who has failed to do so, can have any legal interests in permanently disposing of maritime zones around the Chagos Archipelago by delimitation”;
- “Mauritius can be regarded as the coastal State in respect of the Chagos Archipelago for the purpose of the delimitation of a maritime boundary even before the process of the decolonization of Mauritius is completed”; and
- “Mauritius can be regarded as the State with an opposite or adjacent coast to the Maldives within the meaning of article 74, paragraph 1, and article 83, paragraph 1, of the Convention and the concerned State within the meaning of paragraph 3 of the same articles.”



6-6 It follows that, despite the United Kingdom's ongoing and unlawful colonial administration of the Chagos Archipelago, there can be no doubt that the Chagos Archipelago forms an integral part of the territory of the Republic of Mauritius and that there is no dispute with the United Kingdom as regards sovereignty over the Chagos Archipelago. There is accordingly no impediment to the CLCS making a recommendation in relation to the Chagos Archipelago.

7. EXISTING AND OUTSTANDING MARITIME BOUNDARIES

7-1 Pursuant to paragraph 2(a) of Annex I to the Rules of Procedure, the Republic of Mauritius wishes to inform the Commission that there is a dispute concerning the delimitation of the EEZ and an area of continental shelf in this Submission between the Republic of Mauritius and the Republic of Maldives.

7-2 On 24 September 2019, following consultations with the President of ITLOS, the Republic of Mauritius and the Republic of Maldives concluded a Special Agreement to submit the above dispute to the Special Chamber concerning delimitation of their maritime boundary.

8. OVERVIEW OF THE CONTINENTAL SHELF IN THE NORTHERN CHAGOS ARCHIPELAGO REGION

8-1 The Chagos Archipelago Region (Chagos Bank) is the southern segment of the Chagos-Laccadives Ridge (CLR) and lies between 4°S and 9°S. The CLR is a slightly arcuate major elongated aseismic feature, which extends for about 2500km, approximately along the 73°E meridian, between 14°N and 9°S. A considerable length of the crest of this submarine ridge is composed of shoals, banks and coral reefs at depths less than 1500m. The CLR supports the landmasses of the Laccadive Islands in the north, Maldives in the central



section and the Chagos Archipelago to the south. Notably, all of the islands and features of the Chagos Archipelago and Maldives sit on the same submarine ridge, and share a common geological origin from the interaction of the Reunion Hotspot with the northward moving Indian plate (Duncan 1990). This long-term episodic event resulted in the formation of the various components of the CLR which are all connected by saddle-like features to form this topographic continuity.

- 8-2** The Chagos Ridge (the southern segment of the CLR) is bounded to the east by the Chagos Trough. The oceanic crust to the west and south of the ridge displays transform faults linked to the Central Indian Ridge spreading centre. The Chagos Archipelago, the submerged expression of the Chagos Ridge, is an archipelago of coral islands (Sheppard & Seaward, 1999).
- 8-3** The Chagos Ridge is associated with submarine volcanic accumulations that resulted from the northward passage of the Indian Plate over the Reunion Hotspot. The Republic of Mauritius is of the view that the Chagos Ridge represents the submerged prolongation of the relevant landmass of the Republic of Mauritius in this area.
- 8-4** The outer limits of the continental shelf in the Northern Chagos Archipelago Region encloses an area of approximately **23,400km²** extending beyond 200M from the archipelagic baselines from which the breadth of the territorial sea of the Republic of Mauritius is measured. The outer limit of the extended continental shelf is defined by fixed points, of which:
- The first (**ECS 1**) is located where the outer limit of Mauritius' extended continental shelf entitlement commences on the Mauritius 200M limit from the Chagos Archipelago;
 - 118 points (**ECS 2 to ECS 113** and **ECS 163 to ECS 168**) are located



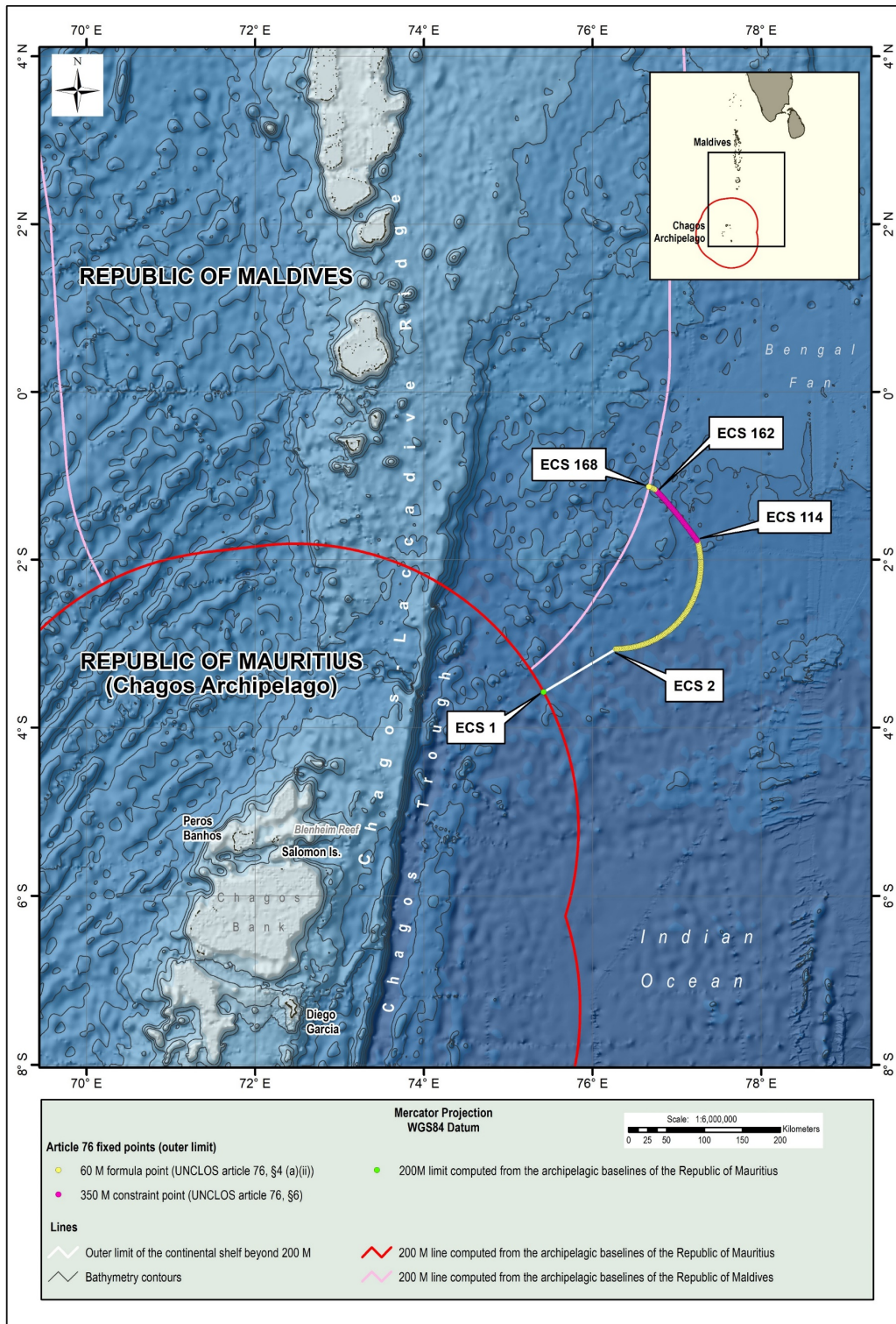
on the arc at 60M from the FOS (Article 76(4)(a)(ii)); and

- 49 points (**ECS 114 to ECS 162**) are defined by the 350M constraint line (Article 76(6)).

8-5 Each successive pair of fixed points defining the outer limit of the extended continental shelf is connected by geodesics not exceeding 60M in length, drawn in accordance with paragraph 7 of Article 76 of the Convention.

9. NOTE OF AUTHENTICATION

All maps, figures, charts and databases forming part of this Submission were prepared by the Department for Continental Shelf and Maritime Zones Administration & Exploration, which is responsible for preparing such materials and for certifying their quality and reliability.



MCNS-ES-MAP-2 The Outer Limits of the Continental Shelf of the Northern Chagos Archipelago Region displaying the Provisions of Article 76 Invoked.

Submission of the Republic of Mauritius concerning the Northern Chagos Archipelago Region



10 ANNEXES

MCNS-ES-ANNEX 1

Table Listing the Fixed Points Defining the Outer Limits of the Continental Shelf in the Northern Chagos Archipelago Region (Decimal Degrees). All coordinates refer to the WGS84 datum.

Point	Latitude (decimal deg°)	Longitude (decimal deg°)	Distance (M)	Provision
ECS 1	-3.57954711	75.42006257	-	Baseline +200M
ECS 2	-3.06385963	76.27814783	59.90	60 M distance criterion
ECS 3	-3.06390430	76.28938848	0.67	60 M distance criterion
ECS 4	-3.06369112	76.30604759	1.00	60 M distance criterion
ECS 5	-3.06319864	76.32270083	1.00	60 M distance criterion
ECS 6	-3.06242698	76.33934358	1.00	60 M distance criterion
ECS 7	-3.06137636	76.35597119	1.00	60 M distance criterion
ECS 8	-3.06004708	76.37257904	1.00	60 M distance criterion
ECS 9	-3.05843950	76.38916250	1.00	60 M distance criterion
ECS 10	-3.05655408	76.40571696	1.00	60 M distance criterion
ECS 11	-3.05439133	76.42223779	1.00	60 M distance criterion
ECS 12	-3.05195187	76.43872041	1.00	60 M distance criterion
ECS 13	-3.04923636	76.45516022	1.00	60 M distance criterion
ECS 14	-3.04624557	76.47155265	1.00	60 M distance criterion
ECS 15	-3.04298033	76.48789313	1.00	60 M distance criterion
ECS 16	-3.03944154	76.50417710	1.00	60 M distance criterion
ECS 17	-3.03563020	76.52040005	1.00	60 M distance criterion
ECS 18	-3.03154737	76.53655744	1.00	60 M distance criterion
ECS 19	-3.02719418	76.55264478	1.00	60 M distance criterion
ECS 20	-3.02257184	76.56865760	1.00	60 M distance criterion
ECS 21	-3.01768165	76.58459143	1.00	60 M distance criterion
ECS 22	-3.01252497	76.60044184	1.00	60 M distance criterion
ECS 23	-3.00710322	76.61620442	1.00	60 M distance criterion
ECS 24	-3.00141793	76.63187477	1.00	60 M distance criterion
ECS 25	-2.99547067	76.64744855	1.00	60 M distance criterion
ECS 26	-2.98926310	76.66292141	1.00	60 M distance criterion
ECS 27	-2.98279695	76.67828904	1.00	60 M distance criterion
ECS 28	-2.97607402	76.69354718	1.00	60 M distance criterion
ECS 29	-2.96909618	76.70869157	1.00	60 M distance criterion

Submission of the Republic of Mauritius concerning the Northern Chagos Archipelago Region



Point	Latitude (decimal deg°)	Longitude (decimal deg°)	Distance (M)	Provision
ECS 30	-2.96186538	76.72371801	1.00	60 M distance criterion
ECS 31	-2.95438363	76.73862231	1.00	60 M distance criterion
ECS 32	-2.94665301	76.75340032	1.00	60 M distance criterion
ECS 33	-2.93867568	76.76804794	1.00	60 M distance criterion
ECS 34	-2.93045385	76.78256109	1.00	60 M distance criterion
ECS 35	-2.92198981	76.79693573	1.00	60 M distance criterion
ECS 36	-2.91328593	76.81116787	1.00	60 M distance criterion
ECS 37	-2.90434462	76.82525355	1.00	60 M distance criterion
ECS 38	-2.89516838	76.83918885	1.00	60 M distance criterion
ECS 39	-2.88575975	76.85296990	1.00	60 M distance criterion
ECS 40	-2.87612136	76.86659287	1.00	60 M distance criterion
ECS 41	-2.86625589	76.88005397	1.00	60 M distance criterion
ECS 42	-2.85616609	76.89334945	1.00	60 M distance criterion
ECS 43	-2.84585477	76.90647563	1.00	60 M distance criterion
ECS 44	-2.83532478	76.91942886	1.00	60 M distance criterion
ECS 45	-2.82457908	76.93220553	1.00	60 M distance criterion
ECS 46	-2.81362064	76.94480211	1.00	60 M distance criterion
ECS 47	-2.80245252	76.95721508	1.00	60 M distance criterion
ECS 48	-2.79107782	76.96944100	1.00	60 M distance criterion
ECS 49	-2.77949971	76.98147648	1.00	60 M distance criterion
ECS 50	-2.76772141	76.99331817	1.00	60 M distance criterion
ECS 51	-2.75574620	77.00496279	1.00	60 M distance criterion
ECS 52	-2.74357741	77.01640710	1.00	60 M distance criterion
ECS 53	-2.73121843	77.02764793	1.00	60 M distance criterion
ECS 54	-2.71867269	77.03868215	1.00	60 M distance criterion
ECS 55	-2.70594368	77.04950671	1.00	60 M distance criterion
ECS 56	-2.69303496	77.06011860	1.00	60 M distance criterion
ECS 57	-2.67995010	77.07051488	1.00	60 M distance criterion
ECS 58	-2.66669275	77.08069266	1.00	60 M distance criterion
ECS 59	-2.65326659	77.09064913	1.00	60 M distance criterion
ECS 60	-2.63967536	77.10038151	1.00	60 M distance criterion
ECS 61	-2.62592284	77.10988712	1.00	60 M distance criterion
ECS 62	-2.61201286	77.11916331	1.00	60 M distance criterion
ECS 63	-2.59794928	77.12820752	1.00	60 M distance criterion
ECS 64	-2.58373601	77.13701724	1.00	60 M distance criterion
ECS 65	-2.56937701	77.14559003	1.00	60 M distance criterion



Point	Latitude (decimal deg°)	Longitude (decimal deg°)	Distance (M)	Provision
ECS 66	-2.55487627	77.15392352	1.00	60 M distance criterion
ECS 67	-2.54023782	77.16201539	1.00	60 M distance criterion
ECS 68	-2.52546573	77.16986340	1.00	60 M distance criterion
ECS 69	-2.51056411	77.17746540	1.00	60 M distance criterion
ECS 70	-2.49553710	77.18481926	1.00	60 M distance criterion
ECS 71	-2.48038889	77.19192295	1.00	60 M distance criterion
ECS 72	-2.46512367	77.19877452	1.00	60 M distance criterion
ECS 73	-2.44974570	77.20537206	1.00	60 M distance criterion
ECS 74	-2.43425925	77.21171375	1.00	60 M distance criterion
ECS 75	-2.41866862	77.21779784	1.00	60 M distance criterion
ECS 76	-2.40297815	77.22362264	1.00	60 M distance criterion
ECS 77	-2.38719219	77.22918656	1.00	60 M distance criterion
ECS 78	-2.37131515	77.23448804	1.00	60 M distance criterion
ECS 79	-2.35535142	77.23952563	1.00	60 M distance criterion
ECS 80	-2.33930544	77.24429793	1.00	60 M distance criterion
ECS 81	-2.32318168	77.24880364	1.00	60 M distance criterion
ECS 82	-2.30698462	77.25304151	1.00	60 M distance criterion
ECS 83	-2.29071875	77.25701036	1.00	60 M distance criterion
ECS 84	-2.27438859	77.26070912	1.00	60 M distance criterion
ECS 85	-2.25799869	77.26413675	1.00	60 M distance criterion
ECS 86	-2.24155360	77.26729232	1.00	60 M distance criterion
ECS 87	-2.22505787	77.27017496	1.00	60 M distance criterion
ECS 88	-2.20851611	77.27278388	1.00	60 M distance criterion
ECS 89	-2.19193290	77.27511837	1.00	60 M distance criterion
ECS 90	-2.17531285	77.27717777	1.00	60 M distance criterion
ECS 91	-2.15866058	77.27896154	1.00	60 M distance criterion
ECS 92	-2.14198071	77.28046919	1.00	60 M distance criterion
ECS 93	-2.12527788	77.28170030	1.00	60 M distance criterion
ECS 94	-2.10855672	77.28265455	1.00	60 M distance criterion
ECS 95	-2.09182188	77.28333167	1.00	60 M distance criterion
ECS 96	-2.07507801	77.28373149	1.00	60 M distance criterion
ECS 97	-2.05832976	77.28385391	1.00	60 M distance criterion
ECS 98	-2.04158178	77.28369889	1.00	60 M distance criterion
ECS 99	-2.02483872	77.28326651	1.00	60 M distance criterion
ECS 100	-2.00810523	77.28255687	1.00	60 M distance criterion
ECS 101	-1.99138596	77.28157019	1.00	60 M distance criterion



Point	Latitude (decimal deg°)	Longitude (decimal deg°)	Distance (M)	Provision
ECS 102	-1.97468555	77.28030674	1.00	60 M distance criterion
ECS 103	-1.95800863	77.27876690	1.00	60 M distance criterion
ECS 104	-1.94135985	77.27695109	1.00	60 M distance criterion
ECS 105	-1.92474381	77.27485982	1.00	60 M distance criterion
ECS 106	-1.90816515	77.27249369	1.00	60 M distance criterion
ECS 107	-1.89162845	77.26985335	1.00	60 M distance criterion
ECS 108	-1.87513831	77.26693956	1.00	60 M distance criterion
ECS 109	-1.85869930	77.26375312	1.00	60 M distance criterion
ECS 110	-1.84231601	77.26029492	1.00	60 M distance criterion
ECS 111	-1.82599296	77.25656594	1.00	60 M distance criterion
ECS 112	-1.80973469	77.25256722	1.00	60 M distance criterion
ECS 113	-1.79354572	77.24829986	1.00	60 M distance criterion
ECS 114	-1.78061724	77.24466180	0.8	60 M distance criterion / 350M Distance Constraint
ECS 115	-1.77268505	77.23906720	0.58	350M Distance Constraint
ECS 116	-1.75905414	77.22939530	1.00	350M Distance Constraint
ECS 117	-1.74545095	77.21968502	1.00	350M Distance Constraint
ECS 118	-1.73187558	77.20993642	1.00	350M Distance Constraint
ECS 119	-1.71832814	77.20014959	1.00	350M Distance Constraint
ECS 120	-1.70480875	77.19032461	1.00	350M Distance Constraint
ECS 121	-1.69131750	77.18046155	1.00	350M Distance Constraint
ECS 122	-1.67785452	77.17056049	1.00	350M Distance Constraint
ECS 123	-1.66441991	77.16062152	1.00	350M Distance Constraint
ECS 124	-1.65101378	77.15064471	1.00	350M Distance Constraint
ECS 125	-1.63763623	77.14063015	1.00	350M Distance Constraint
ECS 126	-1.62428739	77.13057791	1.00	350M Distance Constraint
ECS 127	-1.61096734	77.12048807	1.00	350M Distance Constraint
ECS 128	-1.59767621	77.11036072	1.00	350M Distance Constraint
ECS 129	-1.58441409	77.10019593	1.00	350M Distance Constraint
ECS 130	-1.57118111	77.08999380	1.00	350M Distance Constraint
ECS 131	-1.55797735	77.07975439	1.00	350M Distance Constraint
ECS 132	-1.54480294	77.06947780	1.00	350M Distance Constraint
ECS 133	-1.53165797	77.05916410	1.00	350M Distance Constraint
ECS 134	-1.51854256	77.04881338	1.00	350M Distance Constraint
ECS 135	-1.50545681	77.03842572	1.00	350M Distance Constraint
ECS 136	-1.49240083	77.02800121	1.00	350M Distance Constraint
ECS 137	-1.47937472	77.01753992	1.00	350M Distance Constraint



Point	Latitude (decimal deg°)	Longitude (decimal deg°)	Distance (M)	Provision
ECS 138	-1.46637858	77.00704195	1.00	350M Distance Constraint
ECS 139	-1.45341253	76.99650737	1.00	350M Distance Constraint
ECS 140	-1.44047667	76.98593627	1.00	350M Distance Constraint
ECS 141	-1.42757110	76.97532874	1.00	350M Distance Constraint
ECS 142	-1.41469592	76.96468486	1.00	350M Distance Constraint
ECS 143	-1.40185125	76.95400471	1.00	350M Distance Constraint
ECS 144	-1.38903718	76.94328839	1.00	350M Distance Constraint
ECS 145	-1.37625383	76.93253597	1.00	350M Distance Constraint
ECS 146	-1.36350128	76.92174755	1.00	350M Distance Constraint
ECS 147	-1.35077966	76.91092321	1.00	350M Distance Constraint
ECS 148	-1.33808905	76.90006303	1.00	350M Distance Constraint
ECS 149	-1.32542957	76.88916711	1.00	350M Distance Constraint
ECS 150	-1.31280131	76.87823553	1.00	350M Distance Constraint
ECS 151	-1.30020438	76.86726838	1.00	350M Distance Constraint
ECS 152	-1.28763888	76.85626575	1.00	350M Distance Constraint
ECS 153	-1.27510491	76.84522773	1.00	350M Distance Constraint
ECS 154	-1.26260257	76.83415440	1.00	350M Distance Constraint
ECS 155	-1.25013197	76.82304585	1.00	350M Distance Constraint
ECS 156	-1.23769320	76.81190218	1.00	350M Distance Constraint
ECS 157	-1.22528637	76.80072346	1.00	350M Distance Constraint
ECS 158	-1.21291158	76.78950980	1.00	350M Distance Constraint
ECS 159	-1.20056893	76.77826128	1.00	350M Distance Constraint
ECS 160	-1.18825851	76.76697799	1.00	350M Distance Constraint
ECS 161	-1.17598043	76.75566002	1.00	350M Distance Constraint
ECS 162	-1.16950698	76.74965867	0.53	350M Distance Constraint / 60 M distance criterion
ECS 163	-1.16315318	76.73748827	0.82	60 M distance criterion
ECS 164	-1.15569021	76.72259129	1.00	60 M distance criterion
ECS 165	-1.14847807	76.70757288	1.00	60 M distance criterion
ECS 166	-1.14151876	76.69243724	1.00	60 M distance criterion
ECS 167	-1.13481421	76.67718854	1.00	60 M distance criterion
ECS 168	-1.13133821	76.66890947	0.54	60 M distance criterion / Baseline +200M



MCNS-ES-ANNEX 2

Table Listing the Fixed Points Defining the Outer Limits of the Continental Shelf in the Northern Chagos Archipelago Region (Degrees, Minutes, Seconds). All coordinates refer to the WGS84 datum.

Point	Latitude (DMS)	Longitude (DMS)	Distance (M)	Provision
ECS 1	3° 34' 46.4" S	75° 25' 12.2" E	-	Baseline +200M
ECS 2	3° 3' 49.9" S	76° 16' 41.3" E	59.99	60 M distance criterion
ECS 3	3° 3' 50.1" S	76° 17' 21.8" E	0.67	60 M distance criterion
ECS 4	3° 3' 49.3" S	76° 18' 21.8" E	1.00	60 M distance criterion
ECS 5	3° 3' 47.5" S	76° 19' 21.7" E	1.00	60 M distance criterion
ECS 6	3° 3' 44.7" S	76° 20' 21.6" E	1.00	60 M distance criterion
ECS 7	3° 3' 41.0" S	76° 21' 21.5" E	1.00	60 M distance criterion
ECS 8	3° 3' 36.2" S	76° 22' 21.3" E	1.00	60 M distance criterion
ECS 9	3° 3' 30.4" S	76° 23' 21.0" E	1.00	60 M distance criterion
ECS 10	3° 3' 23.6" S	76° 24' 20.6" E	1.00	60 M distance criterion
ECS 11	3° 3' 15.8" S	76° 25' 20.1" E	1.00	60 M distance criterion
ECS 12	3° 3' 7.0" S	76° 26' 19.4" E	1.00	60 M distance criterion
ECS 13	3° 2' 57.3" S	76° 27' 18.6" E	1.00	60 M distance criterion
ECS 14	3° 2' 46.5" S	76° 28' 17.6" E	1.00	60 M distance criterion
ECS 15	3° 2' 34.7" S	76° 29' 16.4" E	1.00	60 M distance criterion
ECS 16	3° 2' 22.0" S	76° 30' 15.0" E	1.00	60 M distance criterion
ECS 17	3° 2' 8.3" S	76° 31' 13.4" E	1.00	60 M distance criterion
ECS 18	3° 1' 53.6" S	76° 32' 11.6" E	1.00	60 M distance criterion
ECS 19	3° 1' 37.9" S	76° 33' 9.5" E	1.00	60 M distance criterion
ECS 20	3° 1' 21.3" S	76° 34' 7.2" E	1.00	60 M distance criterion
ECS 21	3° 1' 3.7" S	76° 35' 4.5" E	1.00	60 M distance criterion
ECS 22	3° 0' 45.1" S	76° 36' 1.6" E	1.00	60 M distance criterion
ECS 23	3° 0' 25.6" S	76° 36' 58.3" E	1.00	60 M distance criterion
ECS 24	3° 0' 5.1" S	76° 37' 54.8" E	1.00	60 M distance criterion
ECS 25	2° 59' 43.7" S	76° 38' 50.8" E	1.00	60 M distance criterion
ECS 26	2° 59' 21.4" S	76° 39' 46.5" E	1.00	60 M distance criterion
ECS 27	2° 58' 58.1" S	76° 40' 41.8" E	1.00	60 M distance criterion
ECS 28	2° 58' 33.9" S	76° 41' 36.8" E	1.00	60 M distance criterion
ECS 29	2° 58' 8.8" S	76° 42' 31.3" E	1.00	60 M distance criterion
ECS 30	2° 57' 42.7" S	76° 43' 25.4" E	1.00	60 M distance criterion
ECS 31	2° 57' 15.8" S	76° 44' 19.0" E	1.00	60 M distance criterion
ECS 32	2° 56' 48.0" S	76° 45' 12.2" E	1.00	60 M distance criterion



Point	Latitude (DMS)	Longitude (DMS)	Distance (M)	Provision
ECS 33	2° 56' 19.2" S	76° 46' 5.0" E	1.00	60 M distance criterion
ECS 34	2° 55' 49.6" S	76° 46' 57.2" E	1.00	60 M distance criterion
ECS 35	2° 55' 19.2" S	76° 47' 49.0" E	1.00	60 M distance criterion
ECS 36	2° 54' 47.8" S	76° 48' 40.2" E	1.00	60 M distance criterion
ECS 37	2° 54' 15.6" S	76° 49' 30.9" E	1.00	60 M distance criterion
ECS 38	2° 53' 42.6" S	76° 50' 21.1" E	1.00	60 M distance criterion
ECS 39	2° 53' 8.7" S	76° 51' 10.7" E	1.00	60 M distance criterion
ECS 40	2° 52' 34.0" S	76° 51' 59.7" E	1.00	60 M distance criterion
ECS 41	2° 51' 58.5" S	76° 52' 48.2" E	1.00	60 M distance criterion
ECS 42	2° 51' 22.2" S	76° 53' 36.1" E	1.00	60 M distance criterion
ECS 43	2° 50' 45.1" S	76° 54' 23.3" E	1.00	60 M distance criterion
ECS 44	2° 50' 7.2" S	76° 55' 9.9" E	1.00	60 M distance criterion
ECS 45	2° 49' 28.5" S	76° 55' 55.9" E	1.00	60 M distance criterion
ECS 46	2° 48' 49.0" S	76° 56' 41.3" E	1.00	60 M distance criterion
ECS 47	2° 48' 8.8" S	76° 57' 26.0" E	1.00	60 M distance criterion
ECS 48	2° 47' 27.9" S	76° 58' 10.0" E	1.00	60 M distance criterion
ECS 49	2° 46' 46.2" S	76° 58' 53.3" E	1.00	60 M distance criterion
ECS 50	2° 46' 3.8" S	76° 59' 36.0" E	1.00	60 M distance criterion
ECS 51	2° 45' 20.7" S	77° 0' 17.9" E	1.00	60 M distance criterion
ECS 52	2° 44' 36.9" S	77° 0' 59.1" E	1.00	60 M distance criterion
ECS 53	2° 43' 52.4" S	77° 1' 39.5" E	1.00	60 M distance criterion
ECS 54	2° 43' 7.2" S	77° 2' 19.3" E	1.00	60 M distance criterion
ECS 55	2° 42' 21.4" S	77° 2' 58.2" E	1.00	60 M distance criterion
ECS 56	2° 41' 34.9" S	77° 3' 36.4" E	1.00	60 M distance criterion
ECS 57	2° 40' 47.8" S	77° 4' 13.9" E	1.00	60 M distance criterion
ECS 58	2° 40' 0.1" S	77° 4' 50.5" E	1.00	60 M distance criterion
ECS 59	2° 39' 11.8" S	77° 5' 26.3" E	1.00	60 M distance criterion
ECS 60	2° 38' 22.8" S	77° 6' 1.4" E	1.00	60 M distance criterion
ECS 61	2° 37' 33.3" S	77° 6' 35.6" E	1.00	60 M distance criterion
ECS 62	2° 36' 43.3" S	77° 7' 9.0" E	1.00	60 M distance criterion
ECS 63	2° 35' 52.6" S	77° 7' 41.6" E	1.00	60 M distance criterion
ECS 64	2° 35' 1.5" S	77° 8' 13.3" E	1.00	60 M distance criterion
ECS 65	2° 34' 9.8" S	77° 8' 44.1" E	1.00	60 M distance criterion
ECS 66	2° 33' 17.6" S	77° 9' 14.1" E	1.00	60 M distance criterion
ECS 67	2° 32' 24.9" S	77° 9' 43.3" E	1.00	60 M distance criterion
ECS 68	2° 31' 31.7" S	77° 10' 11.5" E	1.00	60 M distance criterion
ECS 69	2° 30' 38.0" S	77° 10' 38.9" E	1.00	60 M distance criterion



Point	Latitude (DMS)	Longitude (DMS)	Distance (M)	Provision
ECS 70	2° 29' 43.9" S	77° 11' 5.4" E	1.00	60 M distance criterion
ECS 71	2° 28' 49.4" S	77° 11' 30.9" E	1.00	60 M distance criterion
ECS 72	2° 27' 54.5" S	77° 11' 55.6" E	1.00	60 M distance criterion
ECS 73	2° 26' 59.1" S	77° 12' 19.3" E	1.00	60 M distance criterion
ECS 74	2° 26' 3.3" S	77° 12' 42.2" E	1.00	60 M distance criterion
ECS 75	2° 25' 7.2" S	77° 13' 4.1" E	1.00	60 M distance criterion
ECS 76	2° 24' 10.7" S	77° 13' 25.0" E	1.00	60 M distance criterion
ECS 77	2° 23' 13.9" S	77° 13' 45.1" E	1.00	60 M distance criterion
ECS 78	2° 22' 16.7" S	77° 14' 4.2" E	1.00	60 M distance criterion
ECS 79	2° 21' 19.3" S	77° 14' 22.3" E	1.00	60 M distance criterion
ECS 80	2° 20' 21.5" S	77° 14' 39.5" E	1.00	60 M distance criterion
ECS 81	2° 19' 23.5" S	77° 14' 55.7" E	1.00	60 M distance criterion
ECS 82	2° 18' 25.1" S	77° 15' 11.0" E	1.00	60 M distance criterion
ECS 83	2° 17' 26.6" S	77° 15' 25.2" E	1.00	60 M distance criterion
ECS 84	2° 16' 27.8" S	77° 15' 38.6" E	1.00	60 M distance criterion
ECS 85	2° 15' 28.8" S	77° 15' 50.9" E	1.00	60 M distance criterion
ECS 86	2° 14' 29.6" S	77° 16' 2.3" E	1.00	60 M distance criterion
ECS 87	2° 13' 30.2" S	77° 16' 12.6" E	1.00	60 M distance criterion
ECS 88	2° 12' 30.7" S	77° 16' 22.0" E	1.00	60 M distance criterion
ECS 89	2° 11' 31.0" S	77° 16' 30.4" E	1.00	60 M distance criterion
ECS 90	2° 10' 31.1" S	77° 16' 37.8" E	1.00	60 M distance criterion
ECS 91	2° 9' 31.2" S	77° 16' 44.3" E	1.00	60 M distance criterion
ECS 92	2° 8' 31.1" S	77° 16' 49.7" E	1.00	60 M distance criterion
ECS 93	2° 7' 31.0" S	77° 16' 54.1" E	1.00	60 M distance criterion
ECS 94	2° 6' 30.8" S	77° 16' 57.6" E	1.00	60 M distance criterion
ECS 95	2° 5' 30.6" S	77° 17' 0.0" E	1.00	60 M distance criterion
ECS 96	2° 4' 30.3" S	77° 17' 1.4" E	1.00	60 M distance criterion
ECS 97	2° 3' 30.0" S	77° 17' 1.9" E	1.00	60 M distance criterion
ECS 98	2° 2' 29.7" S	77° 17' 1.3" E	1.00	60 M distance criterion
ECS 99	2° 1' 29.4" S	77° 16' 59.8" E	1.00	60 M distance criterion
ECS 100	2° 0' 29.2" S	77° 16' 57.2" E	1.00	60 M distance criterion
ECS 101	1° 59' 29.0" S	77° 16' 53.7" E	1.00	60 M distance criterion
ECS 102	1° 58' 28.9" S	77° 16' 49.1" E	1.00	60 M distance criterion
ECS 103	1° 57' 28.8" S	77° 16' 43.6" E	1.00	60 M distance criterion
ECS 104	1° 56' 28.9" S	77° 16' 37.0" E	1.00	60 M distance criterion
ECS 105	1° 55' 29.1" S	77° 16' 29.5" E	1.00	60 M distance criterion
ECS 106	1° 54' 29.4" S	77° 16' 21.0" E	1.00	60 M distance criterion



Point	Latitude (DMS)	Longitude (DMS)	Distance (M)	Provision
ECS 107	1° 53' 29.9" S	77° 16' 11.5" E	1.00	60 M distance criterion
ECS 108	1° 52' 30.5" S	77° 16' 1.0" E	1.00	60 M distance criterion
ECS 109	1° 51' 31.3" S	77° 15' 49.5" E	1.00	60 M distance criterion
ECS 110	1° 50' 32.3" S	77° 15' 37.1" E	1.00	60 M distance criterion
ECS 111	1° 49' 33.6" S	77° 15' 23.6" E	1.00	60 M distance criterion
ECS 112	1° 48' 35.0" S	77° 15' 9.2" E	1.00	60 M distance criterion
ECS 113	1° 47' 36.8" S	77° 14' 53.9" E	1.00	60 M distance criterion
ECS 114	1° 46' 50.2" S	77° 14' 40.8" E	0.8	60 M distance criterion / 350M Distance Constraint
ECS 115	1° 46' 21.7" S	77° 14' 20.6" E	0.58	350M Distance Constraint
ECS 116	1° 45' 32.6" S	77° 13' 45.8" E	1.00	350M Distance Constraint
ECS 117	1° 44' 43.6" S	77° 13' 10.9" E	1.00	350M Distance Constraint
ECS 118	1° 43' 54.8" S	77° 12' 35.8" E	1.00	350M Distance Constraint
ECS 119	1° 43' 6.0" S	77° 12' 0.5" E	1.00	350M Distance Constraint
ECS 120	1° 42' 17.3" S	77° 11' 25.2" E	1.00	350M Distance Constraint
ECS 121	1° 41' 28.7" S	77° 10' 49.7" E	1.00	350M Distance Constraint
ECS 122	1° 40' 40.3" S	77° 10' 14.0" E	1.00	350M Distance Constraint
ECS 123	1° 39' 51.9" S	77° 9' 38.2" E	1.00	350M Distance Constraint
ECS 124	1° 39' 3.7" S	77° 9' 2.3" E	1.00	350M Distance Constraint
ECS 125	1° 38' 15.5" S	77° 8' 26.3" E	1.00	350M Distance Constraint
ECS 126	1° 37' 27.4" S	77° 7' 50.1" E	1.00	350M Distance Constraint
ECS 127	1° 36' 39.5" S	77° 7' 13.8" E	1.00	350M Distance Constraint
ECS 128	1° 35' 51.6" S	77° 6' 37.3" E	1.00	350M Distance Constraint
ECS 129	1° 35' 3.9" S	77° 6' 0.7" E	1.00	350M Distance Constraint
ECS 130	1° 34' 16.3" S	77° 5' 24.0" E	1.00	350M Distance Constraint
ECS 131	1° 33' 28.7" S	77° 4' 47.1" E	1.00	350M Distance Constraint
ECS 132	1° 32' 41.3" S	77° 4' 10.1" E	1.00	350M Distance Constraint
ECS 133	1° 31' 54.0" S	77° 3' 33.0" E	1.00	350M Distance Constraint
ECS 134	1° 31' 6.8" S	77° 2' 55.7" E	1.00	350M Distance Constraint
ECS 135	1° 30' 19.6" S	77° 2' 18.3" E	1.00	350M Distance Constraint
ECS 136	1° 29' 32.6" S	77° 1' 40.8" E	1.00	350M Distance Constraint
ECS 137	1° 28' 45.8" S	77° 1' 3.1" E	1.00	350M Distance Constraint
ECS 138	1° 27' 59.0" S	77° 0' 25.4" E	1.00	350M Distance Constraint
ECS 139	1° 27' 12.3" S	76° 59' 47.4" E	1.00	350M Distance Constraint
ECS 140	1° 26' 25.7" S	76° 59' 9.4" E	1.00	350M Distance Constraint
ECS 141	1° 25' 39.3" S	76° 58' 31.2" E	1.00	350M Distance Constraint
ECS 142	1° 24' 52.9" S	76° 57' 52.9" E	1.00	350M Distance Constraint



Point	Latitude (DMS)	Longitude (DMS)	Distance (M)	Provision
ECS 143	1° 24' 6.7" S	76° 57' 14.4" E	1.00	350M Distance Constraint
ECS 144	1° 23' 20.5" S	76° 56' 35.8" E	1.00	350M Distance Constraint
ECS 145	1° 22' 34.5" S	76° 55' 57.1" E	1.00	350M Distance Constraint
ECS 146	1° 21' 48.6" S	76° 55' 18.3" E	1.00	350M Distance Constraint
ECS 147	1° 21' 2.8" S	76° 54' 39.3" E	1.00	350M Distance Constraint
ECS 148	1° 20' 17.1" S	76° 54' 0.2" E	1.00	350M Distance Constraint
ECS 149	1° 19' 31.6" S	76° 53' 21.0" E	1.00	350M Distance Constraint
ECS 150	1° 18' 46.1" S	76° 52' 41.7" E	1.00	350M Distance Constraint
ECS 151	1° 18' 0.7" S	76° 52' 2.2" E	1.00	350M Distance Constraint
ECS 152	1° 17' 15.5" S	76° 51' 22.6" E	1.00	350M Distance Constraint
ECS 153	1° 16' 30.4" S	76° 50' 42.8" E	1.00	350M Distance Constraint
ECS 154	1° 15' 45.4" S	76° 50' 3.0" E	1.00	350M Distance Constraint
ECS 155	1° 15' 0.5" S	76° 49' 23.0" E	1.00	350M Distance Constraint
ECS 156	1° 14' 15.7" S	76° 48' 42.9" E	1.00	350M Distance Constraint
ECS 157	1° 13' 31.0" S	76° 48' 2.6" E	1.00	350M Distance Constraint
ECS 158	1° 12' 46.5" S	76° 47' 22.2" E	1.00	350M Distance Constraint
ECS 159	1° 12' 2.1" S	76° 46' 41.7" E	1.00	350M Distance Constraint
ECS 160	1° 11' 17.7" S	76° 46' 1.1" E	1.00	350M Distance Constraint
ECS 161	1° 10' 33.5" S	76° 45' 20.4" E	1.00	350M Distance Constraint
ECS 162	1° 10' 10.2" S	76° 44' 58.8" E	0.53	350M Distance Constraint / 60 M distance criterion
ECS 163	1° 9' 47.4" S	76° 44' 15.0" E	0.82	60 M distance criterion
ECS 164	1° 9' 20.5" S	76° 43' 21.3" E	1.00	60 M distance criterion
ECS 165	1° 8' 54.5" S	76° 42' 27.3" E	1.00	60 M distance criterion
ECS 166	1° 8' 29.5" S	76° 41' 32.8" E	1.00	60 M distance criterion
ECS 167	1° 8' 5.3" S	76° 40' 37.9" E	1.00	60 M distance criterion
ECS 168	1° 7' 52.8" S	76° 40' 8.1" E	0.54	60 M distance criterion / Baseline +200M