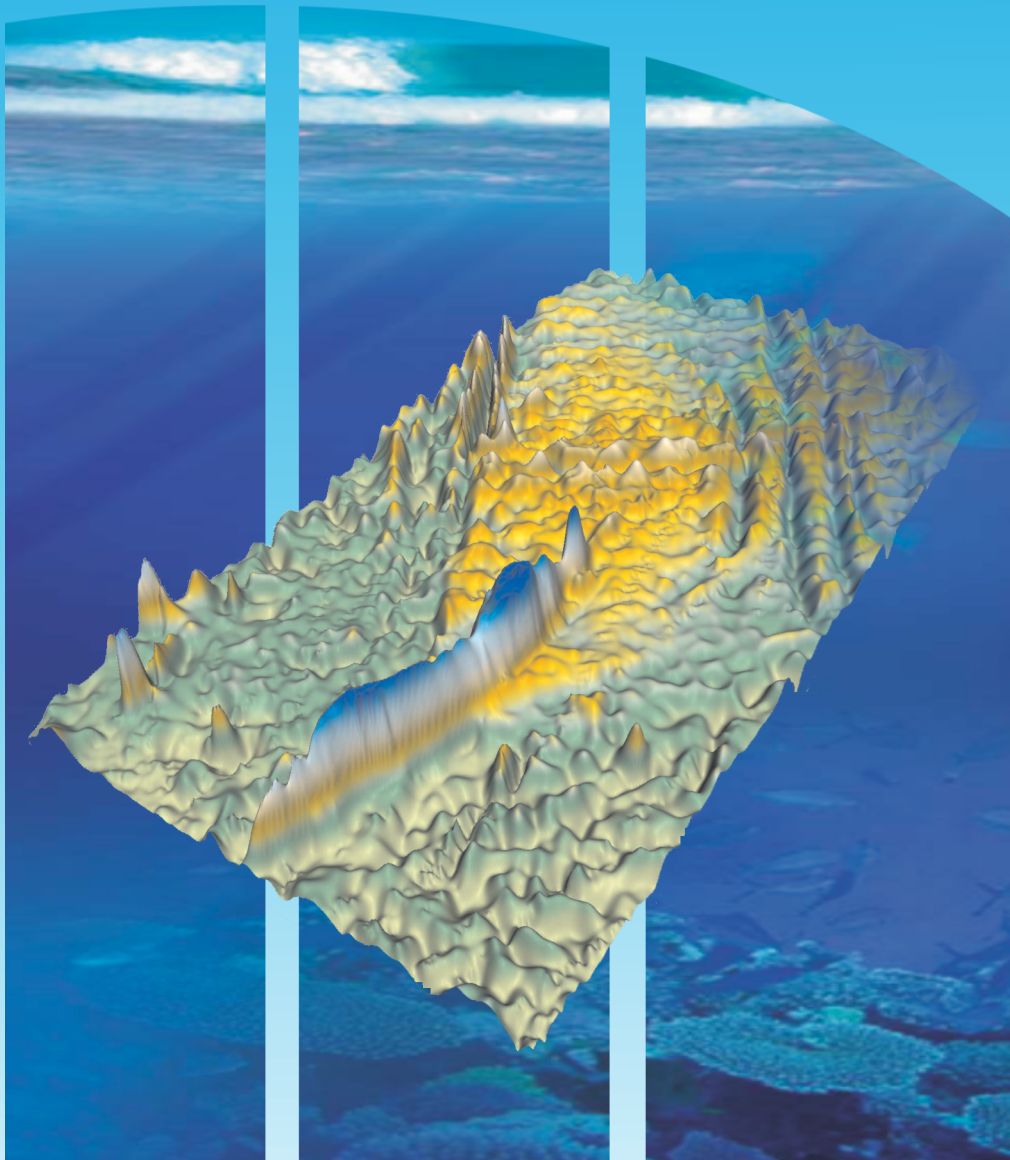




Republic of Mauritius

United Nations Convention on the Law of the Sea

Submission by the Republic of Mauritius to the Commission on the Limits of the Continental Shelf concerning the Extended Continental Shelf in the Region of Rodrigues Island



EXECUTIVE SUMMARY

REPUBLIC OF MAURITIUS



Submission by the Republic of Mauritius to the Commission on the Limits of the Continental Shelf concerning the Extended Continental Shelf in the Region of Rodrigues Island

EXECUTIVE SUMMARY (Revised)

FEBRUARY 2020

MRS-ES-DOC_R1



PREFACE

This Submission was prepared by the following Ministries and Statutory Corporations of the Government of the Republic of Mauritius:

Prime Minister's Office, Department for Continental Shelf and Maritime Zones
Administration & Exploration.
Ministry of Foreign Affairs, Regional Integration & International Trade.
Attorney-General's Office.

The following acted as advisors to the Government of the Republic of Mauritius in the preparation of this submission:

Mr. Harald Brekke, former Member of the Commission on the Limits of the Continental Shelf.

Dr. Jérôme Dymont, Director of Research, Centre National de la Recherche Scientifique (CNRS), Institut de Physique du Globe de Paris.

Professor Jan Faleide from the University of Norway.

Mr. Alexander Mikanov from the University of Norway.



TABLE OF CONTENTS

1. Introduction	5
2. Rodrigues Depth Anomaly - Submarine Elevation	8
3. Outer Limits of the Continental Shelf Concerning the Region of Rodrigues Island	10
4. Maps and Coordinates	11
5. Provisions of Article 76 Invoked	13
6. Outstanding Maritime Delimitations	13
7. Commission Members Who Provided Advice on the Submission	13
8. Overview of the Extended Continental Shelf in the Region of Rodrigues Island	14
9. Note of Authentication	16
10. Annexes	18



LIST OF ANNEXES

Annex 1: Table listing the fixed points defining the outer limits of the extended continental shelf in the region of Rodrigues Island (Decimal Degrees)

MRS-ES-ANNEX 1_R1

Annex 2: Table listing the fixed points defining the outer limits of the extended continental shelf in the region of Rodrigues Island (Degrees, Minutes and Seconds)

MRS-ES-ANNEX 2_R1

LIST OF MAPS

(A0 Executive Summary map supplied separately)

Figure 2: Map depicting the outer limits of the extended continental shelf of the Republic of Mauritius in the region of Rodrigues Island

MRS-ES-MAP-1_R1

Figure 4: Map depicting the outer limits of the extended continental shelf of the Republic of Mauritius in the region of Rodrigues Island displaying the provisions of Article 76 invoked.

MRS-ES-MAP-2_R1



1. INTRODUCTION

- 1.1 This revised Executive Summary replaces all the previous Executive Summaries submitted by the Republic of Mauritius in respect of its extended continental shelf in the Rodrigues region.
- 1.2 This document has been prepared as part of the Submission by the Republic of Mauritius to the Commission on the Limits of the Continental Shelf ('the Commission') pursuant to paragraph 8 of Article 76 of the 1982 United Nations Convention on the Law of the Sea ('the Convention') in support of the establishment by the Republic of Mauritius of the outer limits of the continental shelf that lie beyond 200 nautical miles (M) from the baselines from which the breadth of the territorial sea of the Republic of Mauritius is measured (hereinafter referred to as 'the territorial sea baselines') in the region of Rodrigues Island.
- 1.3 The Republic of Mauritius consists of a group of islands in the Indian Ocean. The main Island of Mauritius is located at longitude 57° 30' east, and latitude 20° 00' south, approximately 900 km east of Madagascar and is part of the Mascarene Islands. The total land area of the Republic of Mauritius is approximately 1,950 km². Under the *Constitution of Mauritius*, the territory of Mauritius includes:
- the main island of Mauritius;
 - the islands of *Cargados Carajos* (St Brandon Group) located some 402 km north of the main island;
 - the *Agalega* Islands located 933 km north of the main island;
 - *Tromelin* located 580 km north-west of the main island;



- the *Chagos Archipelago* that lies approximately 2200 km north-east of the main island; and,
- *Rodrigues Island* located approximately 560 km east of the main island of Mauritius.

1.4 The Republic of Mauritius is Party to the Convention, which it signed on the day it was opened for signature on 10 December 1982, and subsequently ratified on 4 November 1994. The *Maritime Zones Act 2005*, which repealed the *Maritime Zones Act 1977*, provides that the provisions of the Convention have the force of law in the Republic of Mauritius, and establishes maritime zones in accordance with the provisions of the Convention, including provisions defining the outer limits of the continental shelf.

1.5 Under Article 4 of Annex II to the Convention, as supplemented by the decisions of the Eleventh (SPLOS/72) and Eighteenth (SPLOS/183) meetings of the States Parties to the Convention respectively regarding the ten-year period established by Article 4 of Annex II to the Convention, a coastal State for which the Convention entered into force before 13 May 1999 is required to submit particulars of the outer limits of the continental shelf, along with supporting scientific and technical data, to the Commission by 13 May 2009. This Submission by the Republic of Mauritius satisfies that requirement.

1.6 The Republic of Mauritius has, for the purposes of preparing this Submission, applied the relevant provisions of Article 76 of the Convention, together with the relevant provisions of the *Rules of Procedure of the Commission on the Limits of the Continental Shelf* (CLCS/40/Rev.1) adopted by the Commission on 17 April 2008 (hereinafter referred to as the 'Rules of Procedure') and, the recommendations contained in the *Scientific and Technical Guidelines of the*



Commission on the Limits of the Continental Shelf (CLCS/11) adopted by the Commission on 13 May 1999 (hereinafter referred to as ‘the Guidelines’).

- 1.7** This Submission is a partial submission concerning only the extended continental shelf in the region of Rodrigues Island.
- 1.8** In this regard, the Republic of Mauritius has already made a Partial Submission jointly with the Republic of Seychelles on 1 December 2008 in respect of an area of extended continental shelf in the region of the Mascarene Plateau (**SMS-ES-DOC**). The Republic of Mauritius has also made a Partial Submission in respect of an area of its extended continental shelf in the southern Chagos Archipelago region on 26 March 2019. The Republic of Mauritius also intends to make another Partial Submission in respect of its extended continental shelf in the northern Chagos Archipelago region.
- 1.9** In accordance with Annex III to the Rules of Procedure and paragraphs 9.1.3 to 9.1.6 of the Guidelines, the original submission made by the Republic of Mauritius on 6 May 2009 consists of three separate parts comprising an Executive Summary; a core analytical and descriptive part (‘the Main Body’); and, a part containing all required supporting scientific and technical data arranged in a series of annexes (‘supporting scientific and technical data’).
- 1.10** The Commission established a Subcommission for the consideration of the partial submission made by the Republic of Mauritius in the region of Rodrigues Island in August 2012. In the course of the consideration of its Partial Submission, Mauritius provided additional data and information to the Subcommission in July 2015 defining a revised outer limit of the Extended Continental Shelf in the region of Rodrigues Island.



- 1.11** On 25th May 2016, the Republic of Mauritius informed the Commission that it was in the process of carrying out further marine scientific research in the region of Rodrigues Island and requested the Subcommission not to proceed with its examination of Partial Submission until such research had been concluded.
- 1.12** On 8th September 2017, the Commission informed the Republic of Mauritius that it had suspended consideration of this Partial Submission until further notice.
- 1.13** The Republic of Mauritius is presenting in this Revised Partial Submission evidence and supporting data that positively establish the natural prolongation of its territory in the Rodrigues region.

2. RODRIGUES DEPTH ANOMALY - SUBMARINE ELEVATION

- 2.1** The Republic of Mauritius submits that the submerged prolongation of the landmass of Rodrigues Island is constituted by a positive depth anomaly formed by the interaction of the Reunion hotspot and the Central Indian Ridge. This anomaly which is referred to as the Rodrigues Depth Anomaly in this submission has, in the view of the Republic of Mauritius, all the characteristics required to be classified as a submarine elevation within the meaning of Article 76.
- 2.2** The Republic of Mauritius has on the basis of evidence originally provided to the commission and newly acquired data positively identified the existence of a depth anomaly resulting from the hotspot-ridge interaction which it has referred to as Rodrigues Depth Anomaly (**Figure 1**). It has also demonstrated that the Rodrigues Depth Anomaly, in which the Rodrigues Ridge, the Three Magi Ridges and the Gasitao Ridge are embedded, is a submarine elevation



that is a natural component of the continental margin of the landmass of Mauritius in the region of Rodrigues within the meaning of Article 76.

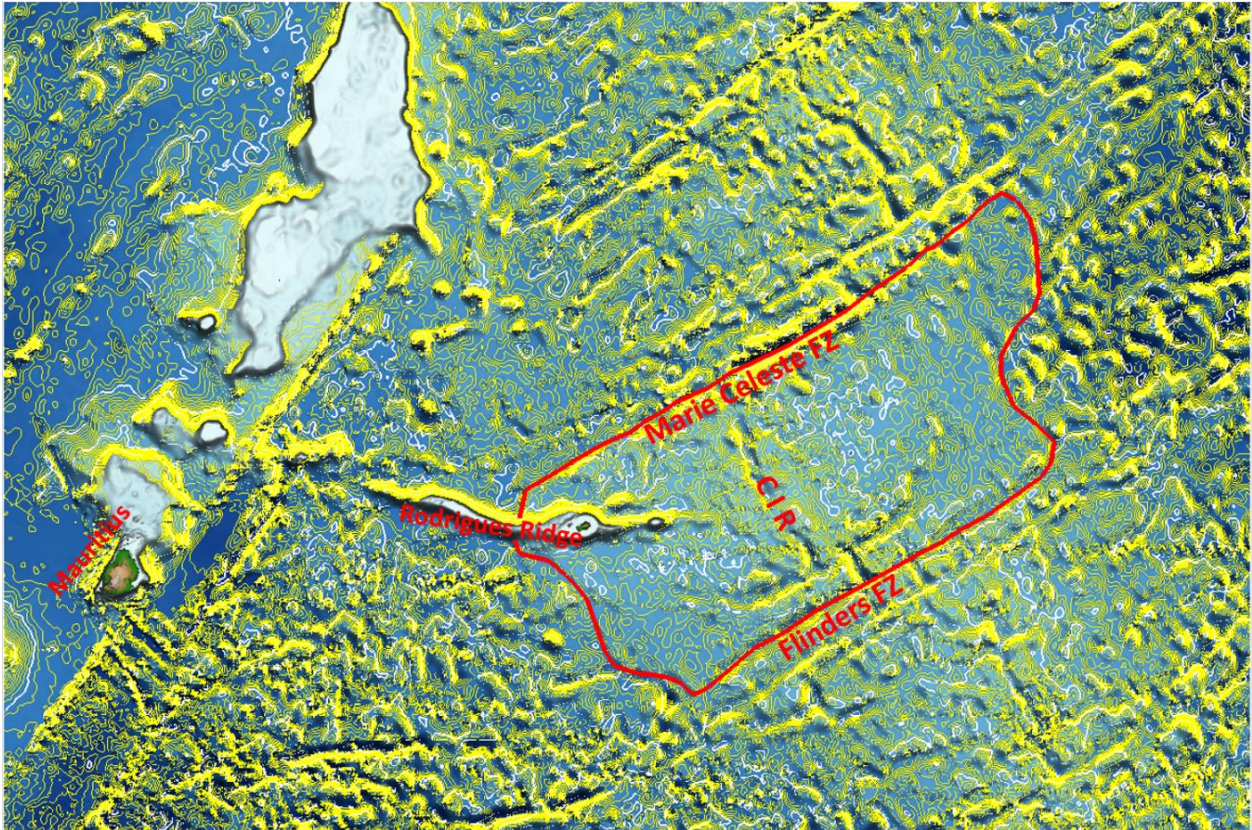


Figure 1 Bathymetric map (Becker *et al.*, 2009) with depth contour intervals of 100 m. It shows the smoothness of the elevated sea-floor of the Rodrigues Depth Anomaly compared to the irregular topography of the surrounding, deeper seafloor. The Rodrigues Depth Anomaly is delineated by the red line.



3. OUTER LIMITS OF THE CONTINENTAL SHELF CONCERNING THE REGION OF RODRIGUES ISLAND

- 3.1** As provided for under paragraph 1 of Article 76 of the Convention, the Republic of Mauritius has a continental shelf comprising the seabed and subsoil of the submarine areas that extend beyond its territorial sea throughout the natural prolongation of its land territory to the outer edge of the continental margin, up to the limits provided for in paragraphs 4 to 6 of Article 76 of the Convention or, to a distance of 200 M from the territorial sea baselines where the outer edge of the continental margin does not extend up to that distance.
- 3.2** Paragraphs 4 to 6 of Article 76 of the Convention set out the manner in which a coastal State may establish the outer edge of its continental margin and its extended continental shelf, wherever that margin extends beyond 200 M measured from the territorial sea baselines.
- 3.3** As set out in paragraph 7 of Article 76 of the Convention, a coastal State is to delineate the outer limits of the extended continental shelf by straight lines not exceeding 60 M in length, connecting fixed points defined by coordinates of latitude and longitude.
- 3.4** The information included by the Republic of Mauritius in support of this revised Partial Submission established that the outer edge of the continental margin in the relevant land territory of the Republic of Mauritius in the region of Rodrigues Island extends beyond 200 M measured from the territorial sea baselines thus satisfying the test of appurtenance.
- 3.5** Section 8 of this revised Executive Summary document provides an overview of the extended continental shelf in the region of Rodrigues Island



determined by the Republic of Mauritius, as well as an outline of the Article 76 fixed points used to construct the outer limit line in this region.

4. MAPS AND COORDINATES

4.1 Two maps at an appropriate scale are included in this revised Executive Summary as **Figure 2 (MRS-ES-MAP-1_R1)** and **Figure 4 (MRS-ES-MAP-2_R1)** respectively, and as separate A0-size maps. **Figure 2** provides an overview of the area of extended continental shelf in the region of Rodrigues Island. **Figure 4** provides an overview of the area of extended continental shelf, together with the location of the Article 76 fixed points that define the outer limits of the extended continental shelf.

4.2 Lists of coordinates of the Article 76 fixed points that define the outer limits of the extended continental shelf submitted by the Republic of Mauritius are supplied in two annexes. **Annex 1 (MRS-ES-ANNEX 1_R1)** lists the fixed points defining the outer limits of the extended continental shelf in decimal degrees. **Annex 2 (MRS-ES-ANNEX 2_R1)** lists the same points in degrees, minutes and seconds. The provisions of Article 76 invoked to define each fixed point, as well as the distance between adjacent points, are indicated in both annexes. Wherever there is discrepancy between the two formats of the coordinates for a particular Article 76 fixed point, the Republic of Mauritius will apply the coordinates farthest seaward from its territorial sea baselines, subject to compliance with the requirements of the relevant provisions of Article 76 of the Convention.

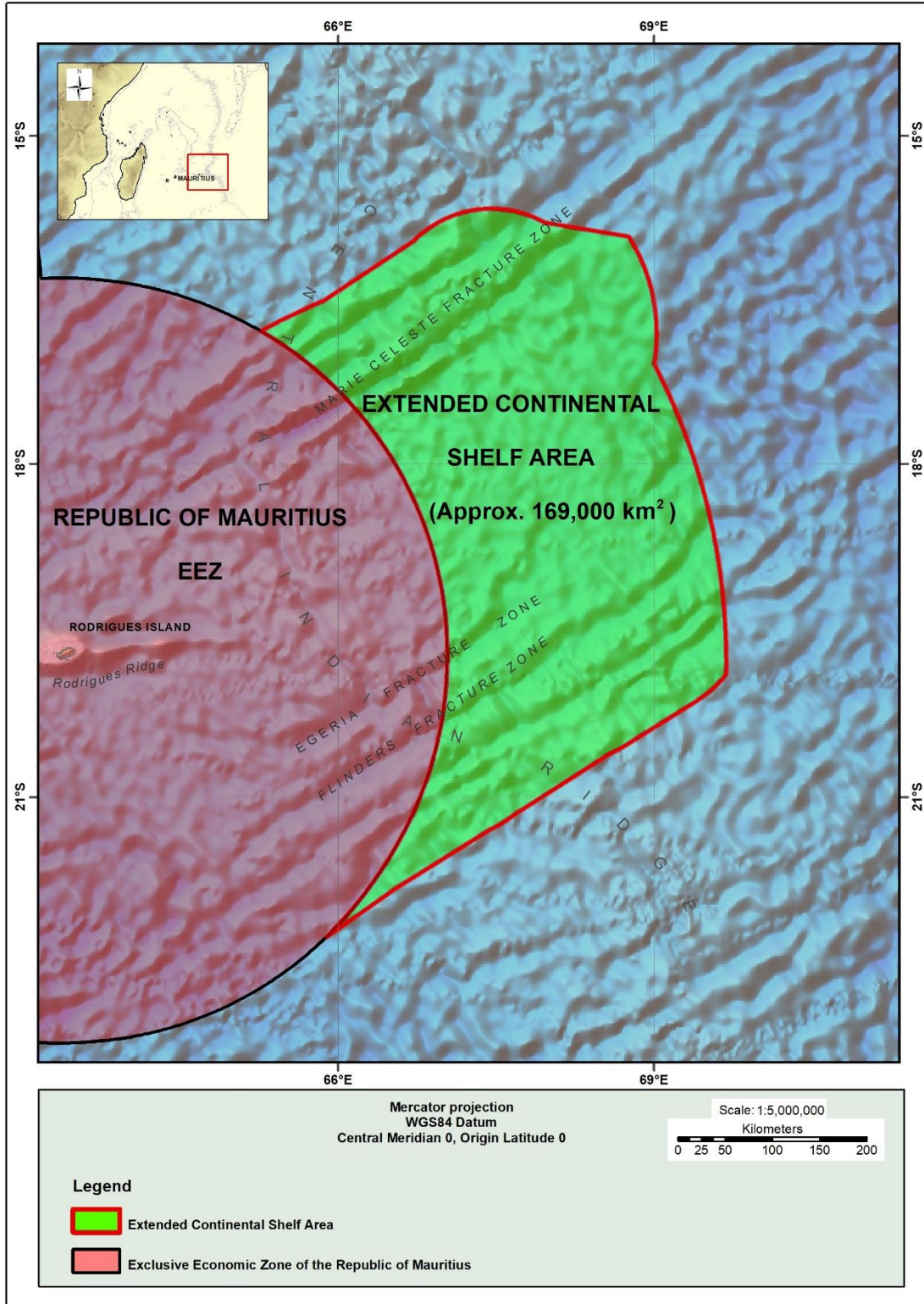


Figure 2 Map depicting the outer limits of the extended continental shelf of the Republic of Mauritius in the region of Rodrigues Island

MRS-ES-MAP-1_R1

Submission by the Republic of Mauritius to the Commission on the Limits of the Continental Shelf concerning the Extended Continental Shelf in the region of Rodrigues Island



5. PROVISIONS OF ARTICLE 76 INVOKED

The Republic of Mauritius invokes paragraphs 4 (a)(ii), 4 (b), 5 and 7 of Article 76 of the Convention in support of this Submission concerning the extended continental shelf in the region of Rodrigues Island.

6. OUTSTANDING MARITIME DELIMITATIONS

The Republic of Mauritius wishes to inform the Commission that the area of extended continental shelf in this Submission is not the subject of any dispute between it and any other State(s) pursuant to paragraph 2(a) of Annex I to the Rules of Procedure.

7. COMMISSION MEMBERS WHO PROVIDED ADVICE ON THE SUBMISSION

The Republic of Mauritius was assisted in the preparation of this revised submission by the former member of the Commission on the Limits of the Continental Shelf, Mr Harald Brekke (1997 – 2012).



8. OVERVIEW OF THE EXTENDED CONTINENTAL SHELF IN THE REGION OF RODRIGUES ISLAND

- 8.1** Rodrigues Island is a volcanic island located approximately 560 km east of the main island of Mauritius in the middle of the Indian Ocean. As at 2018, the human population of Rodrigues Island was estimated to be 43,155 with an average annual rate of population increase in order of 1.1%. It has a size of around 105 km² and is surrounded by a vast lagoon with fringing coral reefs. The island has an elongated shape and is approximately 18 km by 6.5 km, rising to a maximum elevation of approximately 400 m. The volcanic island was formed between 1.3 and 1.5 million years as a result of the interaction of the Reunion hotspot and the Central Indian Ridge.
- 8.2** The Rodrigues Ridge is a linear volcanic sea floor high, approximately 450 km long, which extends continuously in an east-west trend at 19°S from the region of the Mascarene Plateau to the Central Indian Ridge (CIR) in the east. Two smaller bathymetric features, the Three Magi Ridges and Gasitao Ridge, trend further east of the Rodrigues Ridge up to the CIR (**Figure 3**). The eastern part of the Ridge, including Rodrigues Island, is embedded in the Rodrigues Depth Anomaly, a relatively smooth elevation that rises 500 – 1000 m above the surrounding depths of 4000 m. The Rodrigues Depth Anomaly is delineated by the Marie Celeste Fracture Zone to the north, the Flinders Fracture Zone to the south-east and is marked by relatively steep slopes in the north-east and the south-west.

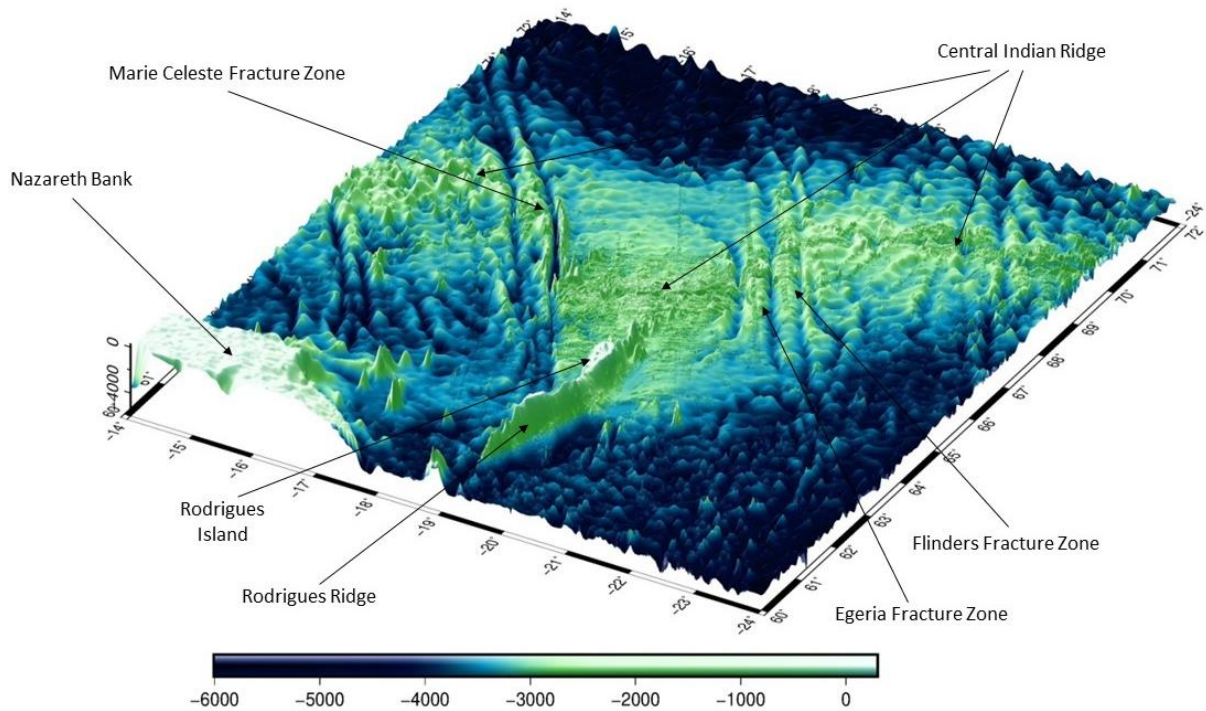


Figure 3 Perspective topographic and bathymetric map depicting the regional setting of the Rodrigues Island region.

8.3 The outer limits of the extended continental shelf in the region of Rodrigues Island enclose an area of approximately **169,000** square kilometres extending beyond 200 M from the territorial sea baselines of the Republic of Mauritius and are defined by an outer limit line composed of **396** fixed points, of which:

- **143** points are defined by arcs 60 M from the foot of the slope (Article 76, paragraph 4(a)(ii) of the Convention);
- **177** points are defined by the 350 M constraint line (Distance Constraint) from the territorial sea baseline of the Republic of Mauritius (Article 76, paragraph 5 of the Convention);
- **74** points are defined by the 2500 m plus 100 M depth constraint line (Depth Constraint) from the 2500 m depth point (Article 76, paragraph 5 of the Convention);



- **2 points (ECS 1 and ECS 396)**, where the outer limit line of the extended continental shelf commences and terminates respectively at points located along the 200 M from the territorial sea baselines of the Republic of Mauritius in the region of Rodrigues Island.

8.4 Each successive pair of fixed points defining the outer limits of the extended continental shelf is connected by geodesics not exceeding 60 M in length, drawn in accordance with paragraph 7 of Article 76 of the Convention.

8.5 The list of Article 76 fixed points delineating the outer limits of the extended continental shelf in the region of Rodrigues Island is supplied in annexes **MRS-ES-ANNEX 1_R1** and **MRS-ES-ANNEX 2_R1** to this revised Executive Summary.

9. NOTE OF AUTHENTICATION

All maps, figures, charts and databases forming part of this Submission have been prepared by the Department for Continental Shelf and Maritime Zones Administration & Exploration of the Prime Minister's Office which has also been entrusted by the Government of the Republic of Mauritius with the responsibility for certifying their quality and reliability.

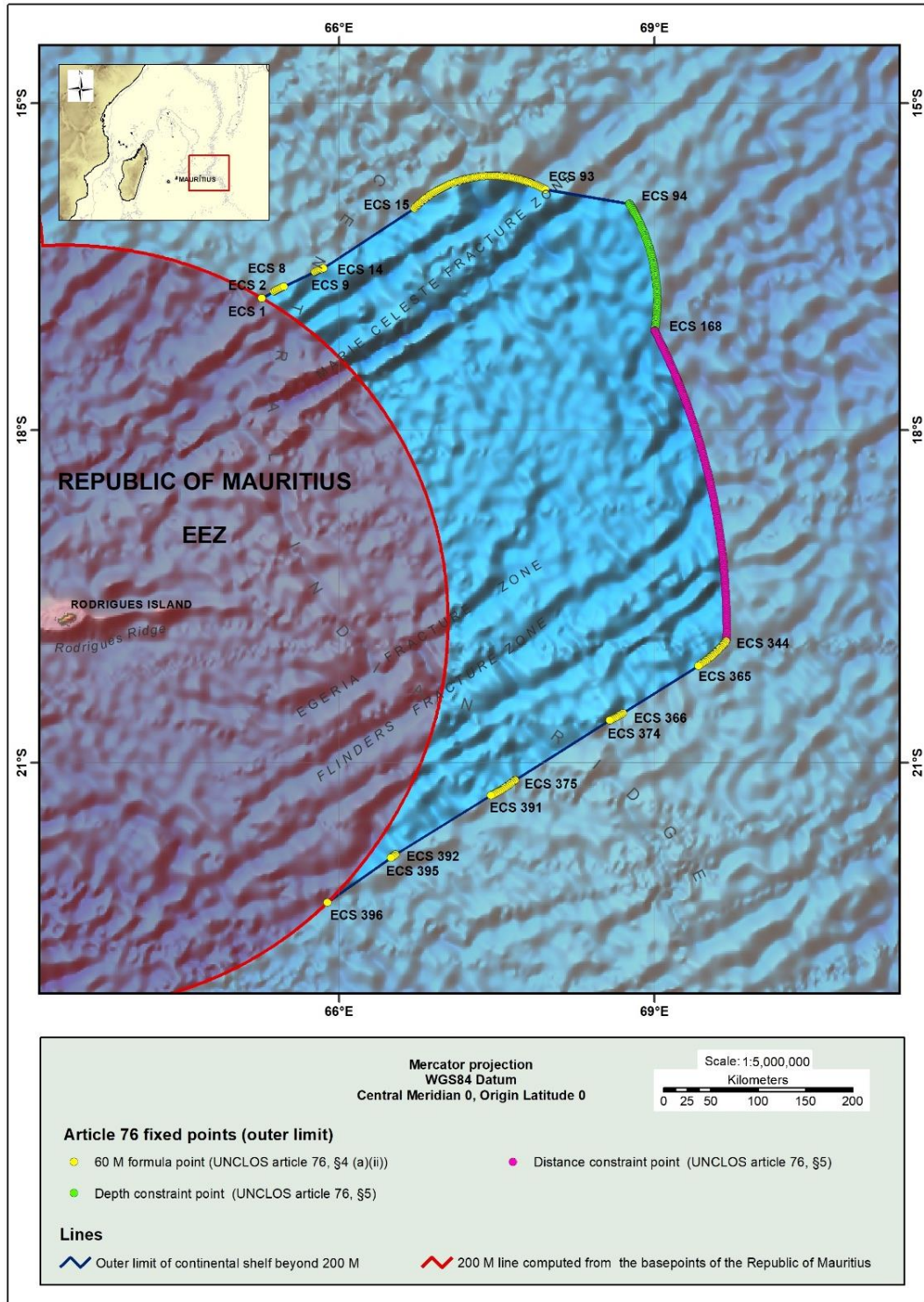


Figure 4 Map depicting the outer limits of the extended continental shelf of the Republic of Mauritius in the region of Rodrigues Island displaying the provisions of Article 76 invoked.

MRS-ES-MAP-2_R1



10. ANNEXES

ANNEX 1

Table listing the fixed points defining the outer limits of the extended continental shelf in the region of Rodrigues Island (Decimal Degrees)

Point ID	Longitude (decimal deg°)	Latitude (decimal deg°)	Distance (M)	Article 76 criterion
ECS 1	65.26680410	-16.79212186		60 M distance criterion chord / Baseline +200M
ECS 2	65.38541407	-16.73201234	7.72	60 M distance criterion
ECS 3	65.39655318	-16.72565549	0.75	60 M distance criterion
ECS 4	65.41164039	-16.71736799	1.00	60 M distance criterion
ECS 5	65.42686683	-16.70932253	1.00	60 M distance criterion
ECS 6	65.44223252	-16.70152021	1.00	60 M distance criterion
ECS 7	65.45772845	-16.69396432	1.00	60 M distance criterion
ECS 8	65.47335016	-16.68665813	1.00	60 M distance criterion
ECS 9	65.77062963	-16.55153092	18.94	60 M distance criterion
ECS 10	65.78636812	-16.54448243	1.00	60 M distance criterion
ECS 11	65.80222338	-16.53768820	1.00	60 M distance criterion
ECS 12	65.81819543	-16.53114718	1.00	60 M distance criterion
ECS 13	65.83427527	-16.52486266	1.00	60 M distance criterion
ECS 14	65.85046291	-16.51883682	1.00	60 M distance criterion
ECS 15	66.71764259	-15.96616611	59.97	60 M distance criterion
ECS 16	66.73135537	-15.95305291	1.11	60 M distance criterion
ECS 17	66.74387789	-15.94150658	1.00	60 M distance criterion
ECS 18	66.75659803	-15.93016384	1.00	60 M distance criterion
ECS 19	66.76951131	-15.91902798	1.00	60 M distance criterion
ECS 20	66.78260875	-15.90810013	1.00	60 M distance criterion
ECS 21	66.79589483	-15.89738467	1.00	60 M distance criterion
ECS 22	66.80936058	-15.88688272	1.00	60 M distance criterion
ECS 23	66.82300599	-15.87659866	1.00	60 M distance criterion
ECS 24	66.83682208	-15.86653578	1.00	60 M distance criterion
ECS 25	66.85080885	-15.85669739	1.00	60 M distance criterion
ECS 26	66.86496630	-15.84708351	1.00	60 M distance criterion
ECS 27	66.87928095	-15.83769743	1.00	60 M distance criterion
ECS 28	66.89375730	-15.82854464	1.00	60 M distance criterion
ECS 29	66.90838187	-15.81962623	1.00	60 M distance criterion
ECS 30	66.92316365	-15.81094226	1.00	60 M distance criterion

Submission by the Republic of Mauritius to the Commission on the Limits of the Continental Shelf concerning the Extended Continental Shelf in the region of Rodrigues Island



Point ID	Longitude (decimal deg°)	Latitude (decimal deg°)	Distance (M)	Article 76 criterion
ECS 31	66.93808467	-15.80249817	1.00	60 M distance criterion
ECS 32	66.95315391	-15.79429401	1.00	60 M distance criterion
ECS 33	66.96835789	-15.78633416	1.00	60 M distance criterion
ECS 34	66.98369663	-15.77861863	1.00	60 M distance criterion
ECS 35	66.99916562	-15.77115073	1.00	60 M distance criterion
ECS 36	67.01476037	-15.76393157	1.00	60 M distance criterion
ECS 37	67.03047640	-15.75696443	1.00	60 M distance criterion
ECS 38	67.04630471	-15.75025153	1.00	60 M distance criterion
ECS 39	67.06224981	-15.74379287	1.00	60 M distance criterion
ECS 40	67.07829821	-15.73759285	1.00	60 M distance criterion
ECS 41	67.09445441	-15.73165039	1.00	60 M distance criterion
ECS 42	67.11070493	-15.72596878	1.00	60 M distance criterion
ECS 43	67.12705427	-15.72054914	1.00	60 M distance criterion
ECS 44	67.14349344	-15.71539256	1.00	60 M distance criterion
ECS 45	67.16001795	-15.71050125	1.00	60 M distance criterion
ECS 46	67.17662331	-15.70587523	1.00	60 M distance criterion
ECS 47	67.19330502	-15.70151668	1.00	60 M distance criterion
ECS 48	67.21005860	-15.69742781	1.00	60 M distance criterion
ECS 49	67.22687956	-15.69360754	1.00	60 M distance criterion
ECS 50	67.24376339	-15.69005914	1.00	60 M distance criterion
ECS 51	67.26070562	-15.68678156	1.00	60 M distance criterion
ECS 52	67.27770624	-15.68377588	1.00	60 M distance criterion
ECS 53	67.29474728	-15.68104538	1.00	60 M distance criterion
ECS 54	67.31183773	-15.67858899	1.00	60 M distance criterion
ECS 55	67.32896860	-15.67640671	1.00	60 M distance criterion
ECS 56	67.34613091	-15.67449965	1.00	60 M distance criterion
ECS 57	67.36332467	-15.67286889	1.00	60 M distance criterion
ECS 58	67.38054537	-15.67151554	1.00	60 M distance criterion
ECS 59	67.39778404	-15.67043851	1.00	60 M distance criterion
ECS 60	67.41504068	-15.66963781	1.00	60 M distance criterion
ECS 61	67.43230630	-15.66911560	1.00	60 M distance criterion
ECS 62	67.44958090	-15.66886973	1.00	60 M distance criterion
ECS 63	67.46685550	-15.66890237	1.00	60 M distance criterion
ECS 64	67.48412561	-15.66921243	1.00	60 M distance criterion
ECS 65	67.50139123	-15.66979990	1.00	60 M distance criterion
ECS 66	67.51864338	-15.67066480	1.00	60 M distance criterion
ECS 67	67.53587756	-15.67180601	1.00	60 M distance criterion
ECS 68	67.55308928	-15.67322463	1.00	60 M distance criterion

Submission by the Republic of Mauritius to the Commission on the Limits of the Continental Shelf concerning the Extended Continental Shelf in the region of Rodrigues Island



Point ID	Longitude (decimal deg°)	Latitude (decimal deg°)	Distance (M)	Article 76 criterion
ECS 69	67.57027854	-15.67491957	1.00	60 M distance criterion
ECS 70	67.58743187	-15.67689082	1.00	60 M distance criterion
ECS 71	67.60455376	-15.67913618	1.00	60 M distance criterion
ECS 72	67.62163074	-15.68165784	1.00	60 M distance criterion
ECS 73	67.63866728	-15.68445251	1.00	60 M distance criterion
ECS 74	67.65564994	-15.68752019	1.00	60 M distance criterion
ECS 75	67.67257869	-15.69086086	1.00	60 M distance criterion
ECS 76	67.68944905	-15.69447341	1.00	60 M distance criterion
ECS 77	67.70625203	-15.69835676	1.00	60 M distance criterion
ECS 78	67.72299214	-15.70250870	1.00	60 M distance criterion
ECS 79	67.73965589	-15.70692923	1.00	60 M distance criterion
ECS 80	67.75624328	-15.71161723	1.00	60 M distance criterion
ECS 81	67.77274982	-15.71657159	1.00	60 M distance criterion
ECS 82	67.78916654	-15.72179013	1.00	60 M distance criterion
ECS 83	67.80549342	-15.72727065	1.00	60 M distance criterion
ECS 84	67.82172597	-15.73301313	1.00	60 M distance criterion
ECS 85	67.83785522	-15.73901536	1.00	60 M distance criterion
ECS 86	67.85388117	-15.74527624	1.00	60 M distance criterion
ECS 87	67.86979482	-15.75179357	1.00	60 M distance criterion
ECS 88	67.88560068	-15.75856623	1.00	60 M distance criterion
ECS 89	67.90128527	-15.76559095	1.00	60 M distance criterion
ECS 90	67.91685307	-15.77286768	1.00	60 M distance criterion
ECS 91	67.93229062	-15.78039423	1.00	60 M distance criterion
ECS 92	67.94759791	-15.78816623	1.00	60 M distance criterion
ECS 93	67.96277046	-15.79618363	1.00	60 M distance criterion
ECS 94	68.76221797	-15.92584748	46.88	60 M chord / Depth constraint point
ECS 95	68.76397005	-15.92854507	0.19	Depth constraint point
ECS 96	68.77302749	-15.94280342	1.00	Depth constraint point
ECS 97	68.78193843	-15.95714827	1.00	Depth constraint point
ECS 98	68.79070196	-15.97157822	1.00	Depth constraint point
ECS 99	68.79931718	-15.98609184	1.00	Depth constraint point
ECS 100	68.80778321	-16.00068769	1.00	Depth constraint point
ECS 101	68.81609918	-16.01536433	1.00	Depth constraint point
ECS 102	68.82426424	-16.03012031	1.00	Depth constraint point
ECS 103	68.83227755	-16.04495419	1.00	Depth constraint point
ECS 104	68.84013829	-16.05986447	1.00	Depth constraint point
ECS 105	68.84784564	-16.07484971	1.00	Depth constraint point
ECS 106	68.85539882	-16.08990841	1.00	Depth constraint point

Submission by the Republic of Mauritius to the Commission on the Limits of the Continental Shelf concerning the Extended Continental Shelf in the region of Rodrigues Island



Point ID	Longitude (decimal deg°)	Latitude (decimal deg°)	Distance (M)	Article 76 criterion
ECS 107	68.86279703	-16.10503908	1.00	Depth constraint point
ECS 108	68.87003952	-16.12024023	1.00	Depth constraint point
ECS 109	68.87712553	-16.13551035	1.00	Depth constraint point
ECS 110	68.88405433	-16.15084793	1.00	Depth constraint point
ECS 111	68.89082520	-16.16625146	1.00	Depth constraint point
ECS 112	68.89743743	-16.18171941	1.00	Depth constraint point
ECS 113	68.90389032	-16.19725025	1.00	Depth constraint point
ECS 114	68.91018322	-16.21284244	1.00	Depth constraint point
ECS 115	68.91631544	-16.22849443	1.00	Depth constraint point
ECS 116	68.92228636	-16.24420468	1.00	Depth constraint point
ECS 117	68.92809534	-16.25997162	1.00	Depth constraint point
ECS 118	68.93374177	-16.27579370	1.00	Depth constraint point
ECS 119	68.93922504	-16.29166935	1.00	Depth constraint point
ECS 120	68.94454459	-16.30759698	1.00	Depth constraint point
ECS 121	68.94969983	-16.32357503	1.00	Depth constraint point
ECS 122	68.95469023	-16.33960191	1.00	Depth constraint point
ECS 123	68.95951524	-16.35567602	1.00	Depth constraint point
ECS 124	68.96417434	-16.37179578	1.00	Depth constraint point
ECS 125	68.96866704	-16.38795957	1.00	Depth constraint point
ECS 126	68.97299285	-16.40416580	1.00	Depth constraint point
ECS 127	68.97715130	-16.42041285	1.00	Depth constraint point
ECS 128	68.98114193	-16.43669912	1.00	Depth constraint point
ECS 129	68.98496430	-16.45302298	1.00	Depth constraint point
ECS 130	68.98861800	-16.46938281	1.00	Depth constraint point
ECS 131	68.99210262	-16.48577698	1.00	Depth constraint point
ECS 132	68.99541777	-16.50220387	1.00	Depth constraint point
ECS 133	68.99856307	-16.51866183	1.00	Depth constraint point
ECS 134	69.00153818	-16.53514924	1.00	Depth constraint point
ECS 135	69.00434275	-16.55166445	1.00	Depth constraint point
ECS 136	69.00697647	-16.56820582	1.00	Depth constraint point
ECS 137	69.00943902	-16.58477170	1.00	Depth constraint point
ECS 138	69.01173011	-16.60136044	1.00	Depth constraint point
ECS 139	69.01384948	-16.61797039	1.00	Depth constraint point
ECS 140	69.01579688	-16.63459989	1.00	Depth constraint point
ECS 141	69.01757205	-16.65124729	1.00	Depth constraint point
ECS 142	69.01917478	-16.66791093	1.00	Depth constraint point
ECS 143	69.02060487	-16.68458914	1.00	Depth constraint point
ECS 144	69.02186213	-16.70128026	1.00	Depth constraint point

Submission by the Republic of Mauritius to the Commission on the Limits of the Continental Shelf concerning the Extended Continental Shelf in the region of Rodrigues Island



Point ID	Longitude (decimal deg°)	Latitude (decimal deg°)	Distance (M)	Article 76 criterion
ECS 145	69.02294639	-16.71798263	1.00	Depth constraint point
ECS 146	69.02385749	-16.73469458	1.00	Depth constraint point
ECS 147	69.02459531	-16.75141444	1.00	Depth constraint point
ECS 148	69.02515971	-16.76814054	1.00	Depth constraint point
ECS 149	69.02555060	-16.78487122	1.00	Depth constraint point
ECS 150	69.02576790	-16.80160479	1.00	Depth constraint point
ECS 151	69.02581153	-16.81833960	1.00	Depth constraint point
ECS 152	69.02568145	-16.83507396	1.00	Depth constraint point
ECS 153	69.02537763	-16.85180621	1.00	Depth constraint point
ECS 154	69.02490004	-16.86853466	1.00	Depth constraint point
ECS 155	69.02424870	-16.88525766	1.00	Depth constraint point
ECS 156	69.02342361	-16.90197352	1.00	Depth constraint point
ECS 157	69.02242482	-16.91868057	1.00	Depth constraint point
ECS 158	69.02125238	-16.93537714	1.00	Depth constraint point
ECS 159	69.01990636	-16.95206156	1.00	Depth constraint point
ECS 160	69.01838686	-16.96873215	1.00	Depth constraint point
ECS 161	69.01669397	-16.98538725	1.00	Depth constraint point
ECS 162	69.01482781	-17.00202519	1.00	Depth constraint point
ECS 163	69.01278854	-17.01864430	1.00	Depth constraint point
ECS 164	69.01057631	-17.03524292	1.00	Depth constraint point
ECS 165	69.00819129	-17.05181937	1.00	Depth constraint point
ECS 166	69.00563368	-17.06837200	1.00	Depth constraint point
ECS 167	69.00290369	-17.08489915	1.00	Depth constraint point
ECS 168	69.00211795	-17.08936675	0.27	Depth constraint point / 350M constraint point
ECS 169	69.00475330	-17.09430057	0.33	350M constraint point
ECS 170	69.01266297	-17.10920685	1.00	350M constraint point
ECS 171	69.02052772	-17.12413459	1.00	350M constraint point
ECS 172	69.02835205	-17.13908379	1.00	350M constraint point
ECS 173	69.03612696	-17.15405336	1.00	350M constraint point
ECS 174	69.04386595	-17.16904438	1.00	350M constraint point
ECS 175	69.05155553	-17.18405684	1.00	350M constraint point
ECS 176	69.05920468	-17.19908858	1.00	350M constraint point
ECS 177	69.06681341	-17.21414174	1.00	350M constraint point
ECS 178	69.07437274	-17.22921417	1.00	350M constraint point
ECS 179	69.08189164	-17.24430801	1.00	350M constraint point
ECS 180	69.08937011	-17.25942218	1.00	350M constraint point
ECS 181	69.09679918	-17.27455559	1.00	350M constraint point

Submission by the Republic of Mauritius to the Commission on the Limits of the Continental Shelf concerning the Extended Continental Shelf in the region of Rodrigues Island



Point ID	Longitude (decimal deg°)	Latitude (decimal deg°)	Distance (M)	Article 76 criterion
ECS 182	69.10418782	-17.28971040	1.00	350M constraint point
ECS 183	69.11153155	-17.30488444	1.00	350M constraint point
ECS 184	69.11883485	-17.32007771	1.00	350M constraint point
ECS 185	69.12608875	-17.33529020	1.00	350M constraint point
ECS 186	69.13330222	-17.35052297	1.00	350M constraint point
ECS 187	69.14047078	-17.36577388	1.00	350M constraint point
ECS 188	69.14759891	-17.38104507	1.00	350M constraint point
ECS 189	69.15467763	-17.39633652	1.00	350M constraint point
ECS 190	69.16171593	-17.41164717	1.00	350M constraint point
ECS 191	69.16870483	-17.42697484	1.00	350M constraint point
ECS 192	69.17565329	-17.44232277	1.00	350M constraint point
ECS 193	69.18255685	-17.45768771	1.00	350M constraint point
ECS 194	69.18941548	-17.47307181	1.00	350M constraint point
ECS 195	69.19623370	-17.48847615	1.00	350M constraint point
ECS 196	69.20300250	-17.50389749	1.00	350M constraint point
ECS 197	69.20972639	-17.51933689	1.00	350M constraint point
ECS 198	69.21640986	-17.53479328	1.00	350M constraint point
ECS 199	69.22304392	-17.55026880	1.00	350M constraint point
ECS 200	69.22963306	-17.56576237	1.00	350M constraint point
ECS 201	69.23618178	-17.58127399	1.00	350M constraint point
ECS 202	69.24268109	-17.59680256	1.00	350M constraint point
ECS 203	69.24913998	-17.61234809	1.00	350M constraint point
ECS 204	69.25554946	-17.62791165	1.00	350M constraint point
ECS 205	69.26191402	-17.64349215	1.00	350M constraint point
ECS 206	69.26823367	-17.65908851	1.00	350M constraint point
ECS 207	69.27451289	-17.67470395	1.00	350M constraint point
ECS 208	69.28074271	-17.69033524	1.00	350M constraint point
ECS 209	69.28692761	-17.70598345	1.00	350M constraint point
ECS 210	69.29306759	-17.72164750	1.00	350M constraint point
ECS 211	69.29915817	-17.73732846	1.00	350M constraint point
ECS 212	69.30520832	-17.75302525	1.00	350M constraint point
ECS 213	69.31120907	-17.76873893	1.00	350M constraint point
ECS 214	69.31716490	-17.78446950	1.00	350M constraint point
ECS 215	69.32308031	-17.80021480	1.00	350M constraint point
ECS 216	69.32894181	-17.81597591	1.00	350M constraint point
ECS 217	69.33476290	-17.83175389	1.00	350M constraint point
ECS 218	69.34053457	-17.84754551	1.00	350M constraint point
ECS 219	69.34626582	-17.86335399	1.00	350M constraint point

Submission by the Republic of Mauritius to the Commission on the Limits of the Continental Shelf concerning the Extended Continental Shelf in the region of Rodrigues Island



Point ID	Longitude (decimal deg°)	Latitude (decimal deg°)	Distance (M)	Article 76 criterion
ECS 220	69.35194767	-17.87917718	1.00	350M constraint point
ECS 221	69.35758011	-17.89501721	1.00	350M constraint point
ECS 222	69.36317212	-17.91087087	1.00	350M constraint point
ECS 223	69.36871472	-17.92674136	1.00	350M constraint point
ECS 224	69.37421241	-17.94262547	1.00	350M constraint point
ECS 225	69.37966070	-17.95852425	1.00	350M constraint point
ECS 226	69.38506855	-17.97443770	1.00	350M constraint point
ECS 227	69.39042251	-17.99036474	1.00	350M constraint point
ECS 228	69.39573605	-18.00630752	1.00	350M constraint point
ECS 229	69.40100017	-18.02226388	1.00	350M constraint point
ECS 230	69.40621939	-18.03823597	1.00	350M constraint point
ECS 231	69.41139368	-18.05421947	1.00	350M constraint point
ECS 232	69.41651857	-18.07021869	1.00	350M constraint point
ECS 233	69.42159405	-18.08623147	1.00	350M constraint point
ECS 234	69.42662911	-18.10225673	1.00	350M constraint point
ECS 235	69.43161027	-18.11829554	1.00	350M constraint point
ECS 236	69.43655100	-18.13434789	1.00	350M constraint point
ECS 237	69.44144233	-18.15041379	1.00	350M constraint point
ECS 238	69.44628425	-18.16649321	1.00	350M constraint point
ECS 239	69.45108125	-18.18258509	1.00	350M constraint point
ECS 240	69.45583334	-18.19868835	1.00	350M constraint point
ECS 241	69.46053602	-18.21480619	1.00	350M constraint point
ECS 242	69.46518929	-18.23093755	1.00	350M constraint point
ECS 243	69.46979765	-18.24708027	1.00	350M constraint point
ECS 244	69.47436109	-18.26323542	1.00	350M constraint point
ECS 245	69.47887513	-18.27940299	1.00	350M constraint point
ECS 246	69.48333975	-18.29558298	1.00	350M constraint point
ECS 247	69.48776396	-18.31177325	1.00	350M constraint point
ECS 248	69.49214774	-18.32797377	1.00	350M constraint point
ECS 249	69.49648211	-18.34418563	1.00	350M constraint point
ECS 250	69.50076707	-18.36040988	1.00	350M constraint point
ECS 251	69.50500712	-18.37664546	1.00	350M constraint point
ECS 252	69.50920225	-18.39289129	1.00	350M constraint point
ECS 253	69.51334348	-18.40914949	1.00	350M constraint point
ECS 254	69.51744429	-18.42541794	1.00	350M constraint point
ECS 255	69.52149120	-18.44169662	1.00	350M constraint point
ECS 256	69.52549320	-18.45798659	1.00	350M constraint point
ECS 257	69.52944579	-18.47428786	1.00	350M constraint point

Submission by the Republic of Mauritius to the Commission on the Limits of the Continental Shelf concerning the Extended Continental Shelf in the region of Rodrigues Island



Point ID	Longitude (decimal deg°)	Latitude (decimal deg°)	Distance (M)	Article 76 criterion
ECS 258	69.53334897	-18.49060041	1.00	350M constraint point
ECS 259	69.53720723	-18.50692318	1.00	350M constraint point
ECS 260	69.54101609	-18.52325509	1.00	350M constraint point
ECS 261	69.54478003	-18.53959719	1.00	350M constraint point
ECS 262	69.54849007	-18.55595057	1.00	350M constraint point
ECS 263	69.55215520	-18.57231200	1.00	350M constraint point
ECS 264	69.55577541	-18.58868362	1.00	350M constraint point
ECS 265	69.55934172	-18.60506650	1.00	350M constraint point
ECS 266	69.56286311	-18.62145848	1.00	350M constraint point
ECS 267	69.56633510	-18.63786065	1.00	350M constraint point
ECS 268	69.56975768	-18.65426977	1.00	350M constraint point
ECS 269	69.57313535	-18.67069013	1.00	350M constraint point
ECS 270	69.57646361	-18.68711744	1.00	350M constraint point
ECS 271	69.57974246	-18.70355598	1.00	350M constraint point
ECS 272	69.58297190	-18.72000146	1.00	350M constraint point
ECS 273	69.58615194	-18.73645602	1.00	350M constraint point
ECS 274	69.58928706	-18.75291966	1.00	350M constraint point
ECS 275	69.59236828	-18.76939023	1.00	350M constraint point
ECS 276	69.59540459	-18.78586986	1.00	350M constraint point
ECS 277	69.59839148	-18.80235856	1.00	350M constraint point
ECS 278	69.60132897	-18.81885418	1.00	350M constraint point
ECS 279	69.60422155	-18.83535671	1.00	350M constraint point
ECS 280	69.60706023	-18.85186830	1.00	350M constraint point
ECS 281	69.60985399	-18.86838679	1.00	350M constraint point
ECS 282	69.61259385	-18.88491218	1.00	350M constraint point
ECS 283	69.61528879	-18.90144662	1.00	350M constraint point
ECS 284	69.61793433	-18.91798581	1.00	350M constraint point
ECS 285	69.62053046	-18.93453403	1.00	350M constraint point
ECS 286	69.62307719	-18.95108914	1.00	350M constraint point
ECS 287	69.62557450	-18.96765113	1.00	350M constraint point
ECS 288	69.62802690	-18.98422001	1.00	350M constraint point
ECS 289	69.63042541	-19.00079362	1.00	350M constraint point
ECS 290	69.63277450	-19.01737411	1.00	350M constraint point
ECS 291	69.63507868	-19.03396147	1.00	350M constraint point
ECS 292	69.63732896	-19.05055569	1.00	350M constraint point
ECS 293	69.63953432	-19.06715465	1.00	350M constraint point
ECS 294	69.64168579	-19.08376046	1.00	350M constraint point
ECS 295	69.64379234	-19.10037099	1.00	350M constraint point

Submission by the Republic of Mauritius to the Commission on the Limits of the Continental Shelf concerning the Extended Continental Shelf in the region of Rodrigues Island



Point ID	Longitude (decimal deg°)	Latitude (decimal deg°)	Distance (M)	Article 76 criterion
ECS 296	69.64584499	-19.11698837	1.00	350M constraint point
ECS 297	69.64785272	-19.13361046	1.00	350M constraint point
ECS 298	69.64981105	-19.15023727	1.00	350M constraint point
ECS 299	69.65171548	-19.16686878	1.00	350M constraint point
ECS 300	69.65357499	-19.18350499	1.00	350M constraint point
ECS 301	69.65538061	-19.20014804	1.00	350M constraint point
ECS 302	69.65714130	-19.21679366	1.00	350M constraint point
ECS 303	69.65884810	-19.23344610	1.00	350M constraint point
ECS 304	69.66050999	-19.25010322	1.00	350M constraint point
ECS 305	69.66211797	-19.26676504	1.00	350M constraint point
ECS 306	69.66367655	-19.28342941	1.00	350M constraint point
ECS 307	69.66519021	-19.30009846	1.00	350M constraint point
ECS 308	69.66664997	-19.31677219	1.00	350M constraint point
ECS 309	69.66806033	-19.33344846	1.00	350M constraint point
ECS 310	69.66942127	-19.35012940	1.00	350M constraint point
ECS 311	69.67073281	-19.36681288	1.00	350M constraint point
ECS 312	69.67199495	-19.38350102	1.00	350M constraint point
ECS 313	69.67320767	-19.40019170	1.00	350M constraint point
ECS 314	69.67437099	-19.41688490	1.00	350M constraint point
ECS 315	69.67548041	-19.43358277	1.00	350M constraint point
ECS 316	69.67654491	-19.45028315	1.00	350M constraint point
ECS 317	69.67755552	-19.46698606	1.00	350M constraint point
ECS 318	69.67851672	-19.48369148	1.00	350M constraint point
ECS 319	69.67942851	-19.50039943	1.00	350M constraint point
ECS 320	69.68029089	-19.51710988	1.00	350M constraint point
ECS 321	69.68110836	-19.53382284	1.00	350M constraint point
ECS 322	69.68188540	-19.55053619	1.00	350M constraint point
ECS 323	69.68261752	-19.56725204	1.00	350M constraint point
ECS 324	69.68329575	-19.58397039	1.00	350M constraint point
ECS 325	69.68392457	-19.60068911	1.00	350M constraint point
ECS 326	69.68449950	-19.61741034	1.00	350M constraint point
ECS 327	69.68502950	-19.63413193	1.00	350M constraint point
ECS 328	69.68551010	-19.65085601	1.00	350M constraint point
ECS 329	69.68593680	-19.66758046	1.00	350M constraint point
ECS 330	69.68631409	-19.68430740	1.00	350M constraint point
ECS 331	69.68664198	-19.70103470	1.00	350M constraint point
ECS 332	69.68692045	-19.71776235	1.00	350M constraint point
ECS 333	69.68714503	-19.73449036	1.00	350M constraint point

Submission by the Republic of Mauritius to the Commission on the Limits of the Continental Shelf concerning the Extended Continental Shelf in the region of Rodrigues Island



Point ID	Longitude (decimal deg°)	Latitude (decimal deg°)	Distance (M)	Article 76 criterion
ECS 334	69.68732021	-19.75121873	1.00	350M constraint point
ECS 335	69.68745046	-19.76794744	1.00	350M constraint point
ECS 336	69.68752682	-19.78467651	1.00	350M constraint point
ECS 337	69.68754928	-19.80140592	1.00	350M constraint point
ECS 338	69.68752682	-19.81813568	1.00	350M constraint point
ECS 339	69.68745046	-19.83486578	1.00	350M constraint point
ECS 340	69.68732470	-19.85159410	1.00	350M constraint point
ECS 341	69.68714953	-19.86832276	1.00	350M constraint point
ECS 342	69.68692495	-19.88505176	1.00	350M constraint point
ECS 343	69.68665096	-19.90177898	1.00	350M constraint point
ECS 344	69.68662401	-19.90318097	0.08	60 M chord / 350M constraint point
ECS 345	69.67997648	-19.91092359	0.60	60 M distance criterion
ECS 346	69.66883288	-19.92391843	1.00	60 M distance criterion
ECS 347	69.65746470	-19.93673380	1.00	60 M distance criterion
ECS 348	69.64586745	-19.94936760	1.00	60 M distance criterion
ECS 349	69.63405011	-19.96181565	1.00	60 M distance criterion
ECS 350	69.62200819	-19.97407797	1.00	60 M distance criterion
ECS 351	69.60975517	-19.98614613	1.00	60 M distance criterion
ECS 352	69.59728656	-19.99801805	1.00	60 M distance criterion
ECS 353	69.58460684	-20.00969376	1.00	60 M distance criterion
ECS 354	69.57172499	-20.02116482	1.00	60 M distance criterion
ECS 355	69.55863654	-20.03243129	1.00	60 M distance criterion
ECS 356	69.54535495	-20.04348682	1.00	60 M distance criterion
ECS 357	69.53187573	-20.05433148	1.00	60 M distance criterion
ECS 358	69.51820786	-20.06496105	1.00	60 M distance criterion
ECS 359	69.50434686	-20.07537346	1.00	60 M distance criterion
ECS 360	69.49030619	-20.08556663	1.00	60 M distance criterion
ECS 361	69.47608586	-20.09553424	1.00	60 M distance criterion
ECS 362	69.46169036	-20.10527634	1.00	60 M distance criterion
ECS 363	69.44711968	-20.11478871	1.00	60 M distance criterion
ECS 364	69.43238731	-20.12406929	1.00	60 M distance criterion
ECS 365	69.41748875	-20.13311387	1.00	60 M distance criterion
ECS 366	68.69967645	-20.55660375	47.74	60 M distance criterion
ECS 367	68.68453984	-20.56535837	1.00	60 M distance criterion
ECS 368	68.66925051	-20.57387137	1.00	60 M distance criterion
ECS 369	68.65381296	-20.58214280	1.00	60 M distance criterion
ECS 370	68.63822719	-20.59016846	1.00	60 M distance criterion
ECS 371	68.62250218	-20.59794840	1.00	60 M distance criterion

Submission by the Republic of Mauritius to the Commission on the Limits of the Continental Shelf concerning the Extended Continental Shelf in the region of Rodrigues Island



Point ID	Longitude (decimal deg°)	Latitude (decimal deg°)	Distance (M)	Article 76 criterion
ECS 372	68.60663794	-20.60547842	1.00	60 M distance criterion
ECS 373	68.59063894	-20.61275645	1.00	60 M distance criterion
ECS 374	68.57451418	-20.61978253	1.00	60 M distance criterion
ECS 375	67.67292903	-21.15706399	59.98	60 M distance criterion
ECS 376	67.67236309	-21.15750850	0.04	60 M distance criterion
ECS 377	67.65848861	-21.16802256	1.00	60 M distance criterion
ECS 378	67.64443447	-21.17831680	1.00	60 M distance criterion
ECS 379	67.63019168	-21.18838706	1.00	60 M distance criterion
ECS 380	67.61577372	-21.19823337	1.00	60 M distance criterion
ECS 381	67.60117610	-21.20785158	1.00	60 M distance criterion
ECS 382	67.58641228	-21.21723963	1.00	60 M distance criterion
ECS 383	67.57147779	-21.22639333	1.00	60 M distance criterion
ECS 384	67.55638610	-21.23531064	1.00	60 M distance criterion
ECS 385	67.54113719	-21.24398950	1.00	60 M distance criterion
ECS 386	67.52572659	-21.25242782	1.00	60 M distance criterion
ECS 387	67.51017227	-21.26062357	1.00	60 M distance criterion
ECS 388	67.49447421	-21.26857256	1.00	60 M distance criterion
ECS 389	67.47862792	-21.27627483	1.00	60 M distance criterion
ECS 390	67.46265139	-21.28372622	1.00	60 M distance criterion
ECS 391	67.44654010	-21.29092676	1.00	60 M distance criterion
ECS 392	66.53522620	-21.81950948	59.97	60 M distance criterion
ECS 393	66.52413649	-21.82737514	0.78	60 M distance criterion
ECS 394	66.50968709	-21.83726583	1.00	60 M distance criterion
ECS 395	66.49506252	-21.84692730	1.00	60 M distance criterion
ECS 396	65.88819728	-22.24443041	41.34	60 M distance criterion chord / Baseline +200M



ANNEX 2

Table listing the fixed points defining the outer limits of the extended continental shelf in the region of Rodrigues Island (Degrees, Minutes, Seconds)

Point ID	Latitude (deg° min' sec")	Longitude (deg° min' sec")	Distance (M)	Article 76 criterion
ECS 1	16° 47' 31.6" S	65° 16' 0.5" E		60 M distance criterion chord / Baseline +200M
ECS 2	16° 43' 55.2" S	65° 23' 7.5" E	7.72	60 M distance criterion
ECS 3	16° 43' 32.4" S	65° 23' 47.6" E	0.75	60 M distance criterion
ECS 4	16° 43' 2.5" S	65° 24' 41.9" E	1.00	60 M distance criterion
ECS 5	16° 42' 33.6" S	65° 25' 36.7" E	1.00	60 M distance criterion
ECS 6	16° 42' 5.5" S	65° 26' 32.0" E	1.00	60 M distance criterion
ECS 7	16° 41' 38.3" S	65° 27' 27.8" E	1.00	60 M distance criterion
ECS 8	16° 41' 12.0" S	65° 28' 24.1" E	1.00	60 M distance criterion
ECS 9	16° 33' 5.5" S	65° 46' 14.3" E	18.94	60 M distance criterion
ECS 10	16° 32' 40.1" S	65° 47' 10.9" E	1.00	60 M distance criterion
ECS 11	16° 32' 15.7" S	65° 48' 8.0" E	1.00	60 M distance criterion
ECS 12	16° 31' 52.1" S	65° 49' 5.5" E	1.00	60 M distance criterion
ECS 13	16° 31' 29.5" S	65° 50' 3.4" E	1.00	60 M distance criterion
ECS 14	16° 31' 7.8" S	65° 51' 1.7" E	1.00	60 M distance criterion
ECS 15	15° 57' 58.2" S	66° 43' 3.5" E	59.97	60 M distance criterion
ECS 16	15° 57' 11.0" S	66° 43' 52.9" E	1.11	60 M distance criterion
ECS 17	15° 56' 29.4" S	66° 44' 38.0" E	1.00	60 M distance criterion
ECS 18	15° 55' 48.6" S	66° 45' 23.8" E	1.00	60 M distance criterion
ECS 19	15° 55' 8.5" S	66° 46' 10.2" E	1.00	60 M distance criterion
ECS 20	15° 54' 29.2" S	66° 46' 57.4" E	1.00	60 M distance criterion
ECS 21	15° 53' 50.6" S	66° 47' 45.2" E	1.00	60 M distance criterion
ECS 22	15° 53' 12.8" S	66° 48' 33.7" E	1.00	60 M distance criterion
ECS 23	15° 52' 35.8" S	66° 49' 22.8" E	1.00	60 M distance criterion
ECS 24	15° 51' 59.5" S	66° 50' 12.6" E	1.00	60 M distance criterion
ECS 25	15° 51' 24.1" S	66° 51' 2.9" E	1.00	60 M distance criterion
ECS 26	15° 50' 49.5" S	66° 51' 53.9" E	1.00	60 M distance criterion
ECS 27	15° 50' 15.7" S	66° 52' 45.4" E	1.00	60 M distance criterion
ECS 28	15° 49' 42.8" S	66° 53' 37.5" E	1.00	60 M distance criterion
ECS 29	15° 49' 10.7" S	66° 54' 30.2" E	1.00	60 M distance criterion
ECS 30	15° 48' 39.4" S	66° 55' 23.4" E	1.00	60 M distance criterion
ECS 31	15° 48' 9.0" S	66° 56' 17.1" E	1.00	60 M distance criterion
ECS 32	15° 47' 39.5" S	66° 57' 11.4" E	1.00	60 M distance criterion
ECS 33	15° 47' 10.8" S	66° 58' 6.1" E	1.00	60 M distance criterion

Submission by the Republic of Mauritius to the Commission on the Limits of the Continental Shelf concerning the Extended Continental Shelf in the region of Rodrigues Island



Point ID	Latitude (deg° min' sec")	Longitude (deg° min' sec")	Distance (M)	Article 76 criterion
ECS 34	15° 46' 43.0" S	66° 59' 1.3" E	1.00	60 M distance criterion
ECS 35	15° 46' 16.1" S	66° 59' 57.0" E	1.00	60 M distance criterion
ECS 36	15° 45' 50.2" S	67° 0' 53.1" E	1.00	60 M distance criterion
ECS 37	15° 45' 25.1" S	67° 1' 49.7" E	1.00	60 M distance criterion
ECS 38	15° 45' 0.9" S	67° 2' 46.7" E	1.00	60 M distance criterion
ECS 39	15° 44' 37.7" S	67° 3' 44.1" E	1.00	60 M distance criterion
ECS 40	15° 44' 15.3" S	67° 4' 41.9" E	1.00	60 M distance criterion
ECS 41	15° 43' 53.9" S	67° 5' 40.0" E	1.00	60 M distance criterion
ECS 42	15° 43' 33.5" S	67° 6' 38.5" E	1.00	60 M distance criterion
ECS 43	15° 43' 14.0" S	67° 7' 37.4" E	1.00	60 M distance criterion
ECS 44	15° 42' 55.4" S	67° 8' 36.6" E	1.00	60 M distance criterion
ECS 45	15° 42' 37.8" S	67° 9' 36.1" E	1.00	60 M distance criterion
ECS 46	15° 42' 21.2" S	67° 10' 35.8" E	1.00	60 M distance criterion
ECS 47	15° 42' 5.5" S	67° 11' 35.9" E	1.00	60 M distance criterion
ECS 48	15° 41' 50.7" S	67° 12' 36.2" E	1.00	60 M distance criterion
ECS 49	15° 41' 37.0" S	67° 13' 36.8" E	1.00	60 M distance criterion
ECS 50	15° 41' 24.2" S	67° 14' 37.6" E	1.00	60 M distance criterion
ECS 51	15° 41' 12.4" S	67° 15' 38.5" E	1.00	60 M distance criterion
ECS 52	15° 41' 1.6" S	67° 16' 39.7" E	1.00	60 M distance criterion
ECS 53	15° 40' 51.8" S	67° 17' 41.1" E	1.00	60 M distance criterion
ECS 54	15° 40' 42.9" S	67° 18' 42.6" E	1.00	60 M distance criterion
ECS 55	15° 40' 35.1" S	67° 19' 44.3" E	1.00	60 M distance criterion
ECS 56	15° 40' 28.2" S	67° 20' 46.1" E	1.00	60 M distance criterion
ECS 57	15° 40' 22.3" S	67° 21' 48.0" E	1.00	60 M distance criterion
ECS 58	15° 40' 17.5" S	67° 22' 50.0" E	1.00	60 M distance criterion
ECS 59	15° 40' 13.6" S	67° 23' 52.0" E	1.00	60 M distance criterion
ECS 60	15° 40' 10.7" S	67° 24' 54.2" E	1.00	60 M distance criterion
ECS 61	15° 40' 8.8" S	67° 25' 56.3" E	1.00	60 M distance criterion
ECS 62	15° 40' 7.9" S	67° 26' 58.5" E	1.00	60 M distance criterion
ECS 63	15° 40' 8.1" S	67° 28' 0.7" E	1.00	60 M distance criterion
ECS 64	15° 40' 9.2" S	67° 29' 2.9" E	1.00	60 M distance criterion
ECS 65	15° 40' 11.3" S	67° 30' 5.0" E	1.00	60 M distance criterion
ECS 66	15° 40' 14.4" S	67° 31' 7.1" E	1.00	60 M distance criterion
ECS 67	15° 40' 18.5" S	67° 32' 9.2" E	1.00	60 M distance criterion
ECS 68	15° 40' 23.6" S	67° 33' 11.1" E	1.00	60 M distance criterion
ECS 69	15° 40' 29.7" S	67° 34' 13.0" E	1.00	60 M distance criterion
ECS 70	15° 40' 36.8" S	67° 35' 14.8" E	1.00	60 M distance criterion
ECS 71	15° 40' 44.9" S	67° 36' 16.4" E	1.00	60 M distance criterion

Submission by the Republic of Mauritius to the Commission on the Limits of the Continental Shelf concerning the Extended Continental Shelf in the region of Rodrigues Island



Point ID	Latitude (deg° min' sec")	Longitude (deg° min' sec")	Distance (M)	Article 76 criterion
ECS 72	15° 40' 54.0" S	67° 37' 17.9" E	1.00	60 M distance criterion
ECS 73	15° 41' 4.0" S	67° 38' 19.2" E	1.00	60 M distance criterion
ECS 74	15° 41' 15.1" S	67° 39' 20.3" E	1.00	60 M distance criterion
ECS 75	15° 41' 27.1" S	67° 40' 21.3" E	1.00	60 M distance criterion
ECS 76	15° 41' 40.1" S	67° 41' 22.0" E	1.00	60 M distance criterion
ECS 77	15° 41' 54.1" S	67° 42' 22.5" E	1.00	60 M distance criterion
ECS 78	15° 42' 9.0" S	67° 43' 22.8" E	1.00	60 M distance criterion
ECS 79	15° 42' 25.0" S	67° 44' 22.8" E	1.00	60 M distance criterion
ECS 80	15° 42' 41.8" S	67° 45' 22.5" E	1.00	60 M distance criterion
ECS 81	15° 42' 59.7" S	67° 46' 21.9" E	1.00	60 M distance criterion
ECS 82	15° 43' 18.4" S	67° 47' 21.0" E	1.00	60 M distance criterion
ECS 83	15° 43' 38.2" S	67° 48' 19.8" E	1.00	60 M distance criterion
ECS 84	15° 43' 58.9" S	67° 49' 18.2" E	1.00	60 M distance criterion
ECS 85	15° 44' 20.5" S	67° 50' 16.3" E	1.00	60 M distance criterion
ECS 86	15° 44' 43.0" S	67° 51' 14.0" E	1.00	60 M distance criterion
ECS 87	15° 45' 6.5" S	67° 52' 11.3" E	1.00	60 M distance criterion
ECS 88	15° 45' 30.8" S	67° 53' 8.2" E	1.00	60 M distance criterion
ECS 89	15° 45' 56.1" S	67° 54' 4.6" E	1.00	60 M distance criterion
ECS 90	15° 46' 22.3" S	67° 55' 0.7" E	1.00	60 M distance criterion
ECS 91	15° 46' 49.4" S	67° 55' 56.3" E	1.00	60 M distance criterion
ECS 92	15° 47' 17.4" S	67° 56' 51.4" E	1.00	60 M distance criterion
ECS 93	15° 47' 46.3" S	67° 57' 46.0" E	1.00	60 M distance criterion
ECS 94	15° 55' 33.1" S	68° 45' 44.0" E	46.88	60 M chord / Depth constraint point
ECS 95	15° 55' 42.8" S	68° 45' 50.3" E	0.19	Depth constraint point
ECS 96	15° 56' 34.1" S	68° 46' 22.9" E	1.00	Depth constraint point
ECS 97	15° 57' 25.7" S	68° 46' 55.0" E	1.00	Depth constraint point
ECS 98	15° 58' 17.7" S	68° 47' 26.5" E	1.00	Depth constraint point
ECS 99	15° 59' 9.9" S	68° 47' 57.5" E	1.00	Depth constraint point
ECS 100	16° 0' 2.5" S	68° 48' 28.0" E	1.00	Depth constraint point
ECS 101	16° 0' 55.3" S	68° 48' 58.0" E	1.00	Depth constraint point
ECS 102	16° 1' 48.4" S	68° 49' 27.4" E	1.00	Depth constraint point
ECS 103	16° 2' 41.8" S	68° 49' 56.2" E	1.00	Depth constraint point
ECS 104	16° 3' 35.5" S	68° 50' 24.5" E	1.00	Depth constraint point
ECS 105	16° 4' 29.5" S	68° 50' 52.2" E	1.00	Depth constraint point
ECS 106	16° 5' 23.7" S	68° 51' 19.4" E	1.00	Depth constraint point
ECS 107	16° 6' 18.1" S	68° 51' 46.1" E	1.00	Depth constraint point
ECS 108	16° 7' 12.9" S	68° 52' 12.1" E	1.00	Depth constraint point



Point ID	Latitude (deg° min' sec")	Longitude (deg° min' sec")	Distance (M)	Article 76 criterion
ECS 109	16° 8' 7.8" S	68° 52' 37.7" E	1.00	Depth constraint point
ECS 110	16° 9' 3.1" S	68° 53' 2.6" E	1.00	Depth constraint point
ECS 111	16° 9' 58.5" S	68° 53' 27.0" E	1.00	Depth constraint point
ECS 112	16° 10' 54.2" S	68° 53' 50.8" E	1.00	Depth constraint point
ECS 113	16° 11' 50.1" S	68° 54' 14.0" E	1.00	Depth constraint point
ECS 114	16° 12' 46.2" S	68° 54' 36.7" E	1.00	Depth constraint point
ECS 115	16° 13' 42.6" S	68° 54' 58.7" E	1.00	Depth constraint point
ECS 116	16° 14' 39.1" S	68° 55' 20.2" E	1.00	Depth constraint point
ECS 117	16° 15' 35.9" S	68° 55' 41.1" E	1.00	Depth constraint point
ECS 118	16° 16' 32.9" S	68° 56' 1.5" E	1.00	Depth constraint point
ECS 119	16° 17' 30.0" S	68° 56' 21.2" E	1.00	Depth constraint point
ECS 120	16° 18' 27.4" S	68° 56' 40.4" E	1.00	Depth constraint point
ECS 121	16° 19' 24.9" S	68° 56' 58.9" E	1.00	Depth constraint point
ECS 122	16° 20' 22.6" S	68° 57' 16.9" E	1.00	Depth constraint point
ECS 123	16° 21' 20.4" S	68° 57' 34.3" E	1.00	Depth constraint point
ECS 124	16° 22' 18.5" S	68° 57' 51.0" E	1.00	Depth constraint point
ECS 125	16° 23' 16.7" S	68° 58' 7.2" E	1.00	Depth constraint point
ECS 126	16° 24' 15.0" S	68° 58' 22.8" E	1.00	Depth constraint point
ECS 127	16° 25' 13.5" S	68° 58' 37.7" E	1.00	Depth constraint point
ECS 128	16° 26' 12.1" S	68° 58' 52.1" E	1.00	Depth constraint point
ECS 129	16° 27' 10.9" S	68° 59' 5.9" E	1.00	Depth constraint point
ECS 130	16° 28' 9.8" S	68° 59' 19.0" E	1.00	Depth constraint point
ECS 131	16° 29' 8.8" S	68° 59' 31.6" E	1.00	Depth constraint point
ECS 132	16° 30' 7.9" S	68° 59' 43.5" E	1.00	Depth constraint point
ECS 133	16° 31' 7.2" S	68° 59' 54.8" E	1.00	Depth constraint point
ECS 134	16° 32' 6.5" S	69° 0' 5.5" E	1.00	Depth constraint point
ECS 135	16° 33' 6.0" S	69° 0' 15.6" E	1.00	Depth constraint point
ECS 136	16° 34' 5.5" S	69° 0' 25.1" E	1.00	Depth constraint point
ECS 137	16° 35' 5.2" S	69° 0' 34.0" E	1.00	Depth constraint point
ECS 138	16° 36' 4.9" S	69° 0' 42.2" E	1.00	Depth constraint point
ECS 139	16° 37' 4.7" S	69° 0' 49.9" E	1.00	Depth constraint point
ECS 140	16° 38' 4.6" S	69° 0' 56.9" E	1.00	Depth constraint point
ECS 141	16° 39' 4.5" S	69° 1' 3.3" E	1.00	Depth constraint point
ECS 142	16° 40' 4.5" S	69° 1' 9.0" E	1.00	Depth constraint point
ECS 143	16° 41' 4.5" S	69° 1' 14.2" E	1.00	Depth constraint point
ECS 144	16° 42' 4.6" S	69° 1' 18.7" E	1.00	Depth constraint point
ECS 145	16° 43' 4.7" S	69° 1' 22.6" E	1.00	Depth constraint point
ECS 146	16° 44' 4.9" S	69° 1' 25.9" E	1.00	Depth constraint point

Submission by the Republic of Mauritius to the Commission on the Limits of the Continental Shelf concerning the Extended Continental Shelf in the region of Rodrigues Island



Point ID	Latitude (deg° min' sec")	Longitude (deg° min' sec")	Distance (M)	Article 76 criterion
ECS 147	16° 45' 5.1" S	69° 1' 28.5" E	1.00	Depth constraint point
ECS 148	16° 46' 5.3" S	69° 1' 30.6" E	1.00	Depth constraint point
ECS 149	16° 47' 5.5" S	69° 1' 32.0" E	1.00	Depth constraint point
ECS 150	16° 48' 5.8" S	69° 1' 32.8" E	1.00	Depth constraint point
ECS 151	16° 49' 6.0" S	69° 1' 32.9" E	1.00	Depth constraint point
ECS 152	16° 50' 6.3" S	69° 1' 32.5" E	1.00	Depth constraint point
ECS 153	16° 51' 6.5" S	69° 1' 31.4" E	1.00	Depth constraint point
ECS 154	16° 52' 6.7" S	69° 1' 29.6" E	1.00	Depth constraint point
ECS 155	16° 53' 6.9" S	69° 1' 27.3" E	1.00	Depth constraint point
ECS 156	16° 54' 7.1" S	69° 1' 24.3" E	1.00	Depth constraint point
ECS 157	16° 55' 7.3" S	69° 1' 20.7" E	1.00	Depth constraint point
ECS 158	16° 56' 7.4" S	69° 1' 16.5" E	1.00	Depth constraint point
ECS 159	16° 57' 7.4" S	69° 1' 11.7" E	1.00	Depth constraint point
ECS 160	16° 58' 7.4" S	69° 1' 6.2" E	1.00	Depth constraint point
ECS 161	16° 59' 7.4" S	69° 1' 0.1" E	1.00	Depth constraint point
ECS 162	17° 0' 7.3" S	69° 0' 53.4" E	1.00	Depth constraint point
ECS 163	17° 1' 7.1" S	69° 0' 46.0" E	1.00	Depth constraint point
ECS 164	17° 2' 6.9" S	69° 0' 38.1" E	1.00	Depth constraint point
ECS 165	17° 3' 6.6" S	69° 0' 29.5" E	1.00	Depth constraint point
ECS 166	17° 4' 6.1" S	69° 0' 20.3" E	1.00	Depth constraint point
ECS 167	17° 5' 5.6" S	69° 0' 10.5" E	1.00	Depth constraint point
ECS 168	17° 5' 21.7" S	69° 0' 7.6" E	0.27	Depth constraint point / 350M constraint point
ECS 169	17° 5' 39.5" S	69° 0' 17.1" E	0.33	350M constraint point
ECS 170	17° 6' 33.1" S	69° 0' 45.6" E	1.00	350M constraint point
ECS 171	17° 7' 26.9" S	69° 1' 13.9" E	1.00	350M constraint point
ECS 172	17° 8' 20.7" S	69° 1' 42.1" E	1.00	350M constraint point
ECS 173	17° 9' 14.6" S	69° 2' 10.1" E	1.00	350M constraint point
ECS 174	17° 10' 8.6" S	69° 2' 37.9" E	1.00	350M constraint point
ECS 175	17° 11' 2.6" S	69° 3' 5.6" E	1.00	350M constraint point
ECS 176	17° 11' 56.7" S	69° 3' 33.1" E	1.00	350M constraint point
ECS 177	17° 12' 50.9" S	69° 4' 0.5" E	1.00	350M constraint point
ECS 178	17° 13' 45.2" S	69° 4' 27.7" E	1.00	350M constraint point
ECS 179	17° 14' 39.5" S	69° 4' 54.8" E	1.00	350M constraint point
ECS 180	17° 15' 33.9" S	69° 5' 21.7" E	1.00	350M constraint point
ECS 181	17° 16' 28.4" S	69° 5' 48.5" E	1.00	350M constraint point
ECS 182	17° 17' 23.0" S	69° 6' 15.1" E	1.00	350M constraint point
ECS 183	17° 18' 17.6" S	69° 6' 41.5" E	1.00	350M constraint point

Submission by the Republic of Mauritius to the Commission on the Limits of the Continental Shelf concerning the Extended Continental Shelf in the region of Rodrigues Island



Point ID	Latitude (deg° min' sec")	Longitude (deg° min' sec")	Distance (M)	Article 76 criterion
ECS 184	17° 19' 12.3" S	69° 7' 7.8" E	1.00	350M constraint point
ECS 185	17° 20' 7.0" S	69° 7' 33.9" E	1.00	350M constraint point
ECS 186	17° 21' 1.9" S	69° 7' 59.9" E	1.00	350M constraint point
ECS 187	17° 21' 56.8" S	69° 8' 25.7" E	1.00	350M constraint point
ECS 188	17° 22' 51.8" S	69° 8' 51.4" E	1.00	350M constraint point
ECS 189	17° 23' 46.8" S	69° 9' 16.8" E	1.00	350M constraint point
ECS 190	17° 24' 41.9" S	69° 9' 42.2" E	1.00	350M constraint point
ECS 191	17° 25' 37.1" S	69° 10' 7.3" E	1.00	350M constraint point
ECS 192	17° 26' 32.4" S	69° 10' 32.4" E	1.00	350M constraint point
ECS 193	17° 27' 27.7" S	69° 10' 57.2" E	1.00	350M constraint point
ECS 194	17° 28' 23.1" S	69° 11' 21.9" E	1.00	350M constraint point
ECS 195	17° 29' 18.5" S	69° 11' 46.4" E	1.00	350M constraint point
ECS 196	17° 30' 14.0" S	69° 12' 10.8" E	1.00	350M constraint point
ECS 197	17° 31' 9.6" S	69° 12' 35.0" E	1.00	350M constraint point
ECS 198	17° 32' 5.3" S	69° 12' 59.1" E	1.00	350M constraint point
ECS 199	17° 33' 1.0" S	69° 13' 23.0" E	1.00	350M constraint point
ECS 200	17° 33' 56.7" S	69° 13' 46.7" E	1.00	350M constraint point
ECS 201	17° 34' 52.6" S	69° 14' 10.3" E	1.00	350M constraint point
ECS 202	17° 35' 48.5" S	69° 14' 33.7" E	1.00	350M constraint point
ECS 203	17° 36' 44.5" S	69° 14' 56.9" E	1.00	350M constraint point
ECS 204	17° 37' 40.5" S	69° 15' 20.0" E	1.00	350M constraint point
ECS 205	17° 38' 36.6" S	69° 15' 42.9" E	1.00	350M constraint point
ECS 206	17° 39' 32.7" S	69° 16' 5.6" E	1.00	350M constraint point
ECS 207	17° 40' 28.9" S	69° 16' 28.3" E	1.00	350M constraint point
ECS 208	17° 41' 25.2" S	69° 16' 50.7" E	1.00	350M constraint point
ECS 209	17° 42' 21.5" S	69° 17' 12.9" E	1.00	350M constraint point
ECS 210	17° 43' 17.9" S	69° 17' 35.0" E	1.00	350M constraint point
ECS 211	17° 44' 14.4" S	69° 17' 57.0" E	1.00	350M constraint point
ECS 212	17° 45' 10.9" S	69° 18' 18.8" E	1.00	350M constraint point
ECS 213	17° 46' 7.5" S	69° 18' 40.4" E	1.00	350M constraint point
ECS 214	17° 47' 4.1" S	69° 19' 1.8" E	1.00	350M constraint point
ECS 215	17° 48' 0.8" S	69° 19' 23.1" E	1.00	350M constraint point
ECS 216	17° 48' 57.5" S	69° 19' 44.2" E	1.00	350M constraint point
ECS 217	17° 49' 54.3" S	69° 20' 5.2" E	1.00	350M constraint point
ECS 218	17° 50' 51.2" S	69° 20' 25.9" E	1.00	350M constraint point
ECS 219	17° 51' 48.1" S	69° 20' 46.6" E	1.00	350M constraint point
ECS 220	17° 52' 45.0" S	69° 21' 7.0" E	1.00	350M constraint point
ECS 221	17° 53' 42.1" S	69° 21' 27.3" E	1.00	350M constraint point

Submission by the Republic of Mauritius to the Commission on the Limits of the Continental Shelf concerning the Extended Continental Shelf in the region of Rodrigues Island



Point ID	Latitude (deg° min' sec")	Longitude (deg° min' sec")	Distance (M)	Article 76 criterion
ECS 222	17° 54' 39.1" S	69° 21' 47.4" E	1.00	350M constraint point
ECS 223	17° 55' 36.3" S	69° 22' 7.4" E	1.00	350M constraint point
ECS 224	17° 56' 33.5" S	69° 22' 27.2" E	1.00	350M constraint point
ECS 225	17° 57' 30.7" S	69° 22' 46.8" E	1.00	350M constraint point
ECS 226	17° 58' 28.0" S	69° 23' 6.3" E	1.00	350M constraint point
ECS 227	17° 59' 25.3" S	69° 23' 25.5" E	1.00	350M constraint point
ECS 228	18° 0' 22.7" S	69° 23' 44.7" E	1.00	350M constraint point
ECS 229	18° 1' 20.2" S	69° 24' 3.6" E	1.00	350M constraint point
ECS 230	18° 2' 17.7" S	69° 24' 22.4" E	1.00	350M constraint point
ECS 231	18° 3' 15.2" S	69° 24' 41.0" E	1.00	350M constraint point
ECS 232	18° 4' 12.8" S	69° 24' 59.5" E	1.00	350M constraint point
ECS 233	18° 5' 10.4" S	69° 25' 17.7" E	1.00	350M constraint point
ECS 234	18° 6' 8.1" S	69° 25' 35.9" E	1.00	350M constraint point
ECS 235	18° 7' 5.9" S	69° 25' 53.8" E	1.00	350M constraint point
ECS 236	18° 8' 3.7" S	69° 26' 11.6" E	1.00	350M constraint point
ECS 237	18° 9' 1.5" S	69° 26' 29.2" E	1.00	350M constraint point
ECS 238	18° 9' 59.4" S	69° 26' 46.6" E	1.00	350M constraint point
ECS 239	18° 10' 57.3" S	69° 27' 3.9" E	1.00	350M constraint point
ECS 240	18° 11' 55.3" S	69° 27' 21.0" E	1.00	350M constraint point
ECS 241	18° 12' 53.3" S	69° 27' 37.9" E	1.00	350M constraint point
ECS 242	18° 13' 51.4" S	69° 27' 54.7" E	1.00	350M constraint point
ECS 243	18° 14' 49.5" S	69° 28' 11.3" E	1.00	350M constraint point
ECS 244	18° 15' 47.7" S	69° 28' 27.7" E	1.00	350M constraint point
ECS 245	18° 16' 45.9" S	69° 28' 44.0" E	1.00	350M constraint point
ECS 246	18° 17' 44.1" S	69° 29' 0.0" E	1.00	350M constraint point
ECS 247	18° 18' 42.4" S	69° 29' 16.0" E	1.00	350M constraint point
ECS 248	18° 19' 40.7" S	69° 29' 31.7" E	1.00	350M constraint point
ECS 249	18° 20' 39.1" S	69° 29' 47.3" E	1.00	350M constraint point
ECS 250	18° 21' 37.5" S	69° 30' 2.8" E	1.00	350M constraint point
ECS 251	18° 22' 35.9" S	69° 30' 18.0" E	1.00	350M constraint point
ECS 252	18° 23' 34.4" S	69° 30' 33.1" E	1.00	350M constraint point
ECS 253	18° 24' 32.9" S	69° 30' 48.0" E	1.00	350M constraint point
ECS 254	18° 25' 31.5" S	69° 31' 2.8" E	1.00	350M constraint point
ECS 255	18° 26' 30.1" S	69° 31' 17.4" E	1.00	350M constraint point
ECS 256	18° 27' 28.8" S	69° 31' 31.8" E	1.00	350M constraint point
ECS 257	18° 28' 27.4" S	69° 31' 46.0" E	1.00	350M constraint point
ECS 258	18° 29' 26.2" S	69° 32' 0.1" E	1.00	350M constraint point
ECS 259	18° 30' 24.9" S	69° 32' 14.0" E	1.00	350M constraint point

Submission by the Republic of Mauritius to the Commission on the Limits of the Continental Shelf concerning the Extended Continental Shelf in the region of Rodrigues Island



Point ID	Latitude (deg° min' sec")	Longitude (deg° min' sec")	Distance (M)	Article 76 criterion
ECS 260	18° 31' 23.7" S	69° 32' 27.7" E	1.00	350M constraint point
ECS 261	18° 32' 22.6" S	69° 32' 41.2" E	1.00	350M constraint point
ECS 262	18° 33' 21.4" S	69° 32' 54.6" E	1.00	350M constraint point
ECS 263	18° 34' 20.3" S	69° 33' 7.8" E	1.00	350M constraint point
ECS 264	18° 35' 19.3" S	69° 33' 20.8" E	1.00	350M constraint point
ECS 265	18° 36' 18.2" S	69° 33' 33.6" E	1.00	350M constraint point
ECS 266	18° 37' 17.3" S	69° 33' 46.3" E	1.00	350M constraint point
ECS 267	18° 38' 16.3" S	69° 33' 58.8" E	1.00	350M constraint point
ECS 268	18° 39' 15.4" S	69° 34' 11.1" E	1.00	350M constraint point
ECS 269	18° 40' 14.5" S	69° 34' 23.3" E	1.00	350M constraint point
ECS 270	18° 41' 13.6" S	69° 34' 35.3" E	1.00	350M constraint point
ECS 271	18° 42' 12.8" S	69° 34' 47.1" E	1.00	350M constraint point
ECS 272	18° 43' 12.0" S	69° 34' 58.7" E	1.00	350M constraint point
ECS 273	18° 44' 11.2" S	69° 35' 10.2" E	1.00	350M constraint point
ECS 274	18° 45' 10.5" S	69° 35' 21.4" E	1.00	350M constraint point
ECS 275	18° 46' 9.8" S	69° 35' 32.5" E	1.00	350M constraint point
ECS 276	18° 47' 9.1" S	69° 35' 43.5" E	1.00	350M constraint point
ECS 277	18° 48' 8.5" S	69° 35' 54.2" E	1.00	350M constraint point
ECS 278	18° 49' 7.9" S	69° 36' 4.8" E	1.00	350M constraint point
ECS 279	18° 50' 7.3" S	69° 36' 15.2" E	1.00	350M constraint point
ECS 280	18° 51' 6.7" S	69° 36' 25.4" E	1.00	350M constraint point
ECS 281	18° 52' 6.2" S	69° 36' 35.5" E	1.00	350M constraint point
ECS 282	18° 53' 5.7" S	69° 36' 45.3" E	1.00	350M constraint point
ECS 283	18° 54' 5.2" S	69° 36' 55.0" E	1.00	350M constraint point
ECS 284	18° 55' 4.8" S	69° 37' 4.6" E	1.00	350M constraint point
ECS 285	18° 56' 4.3" S	69° 37' 13.9" E	1.00	350M constraint point
ECS 286	18° 57' 3.9" S	69° 37' 23.1" E	1.00	350M constraint point
ECS 287	18° 58' 3.5" S	69° 37' 32.1" E	1.00	350M constraint point
ECS 288	18° 59' 3.2" S	69° 37' 40.9" E	1.00	350M constraint point
ECS 289	19° 0' 2.9" S	69° 37' 49.5" E	1.00	350M constraint point
ECS 290	19° 1' 2.6" S	69° 37' 58.0" E	1.00	350M constraint point
ECS 291	19° 2' 2.3" S	69° 38' 6.3" E	1.00	350M constraint point
ECS 292	19° 3' 2.0" S	69° 38' 14.4" E	1.00	350M constraint point
ECS 293	19° 4' 1.8" S	69° 38' 22.3" E	1.00	350M constraint point
ECS 294	19° 5' 1.5" S	69° 38' 30.1" E	1.00	350M constraint point
ECS 295	19° 6' 1.3" S	69° 38' 37.7" E	1.00	350M constraint point
ECS 296	19° 7' 1.2" S	69° 38' 45.0" E	1.00	350M constraint point
ECS 297	19° 8' 1.0" S	69° 38' 52.3" E	1.00	350M constraint point

Submission by the Republic of Mauritius to the Commission on the Limits of the Continental Shelf concerning the Extended Continental Shelf in the region of Rodrigues Island



Point ID	Latitude (deg° min' sec")	Longitude (deg° min' sec")	Distance (M)	Article 76 criterion
ECS 298	19° 9' 0.9" S	69° 38' 59.3" E	1.00	350M constraint point
ECS 299	19° 10' 0.7" S	69° 39' 6.2" E	1.00	350M constraint point
ECS 300	19° 11' 0.6" S	69° 39' 12.9" E	1.00	350M constraint point
ECS 301	19° 12' 0.5" S	69° 39' 19.4" E	1.00	350M constraint point
ECS 302	19° 13' 0.5" S	69° 39' 25.7" E	1.00	350M constraint point
ECS 303	19° 14' 0.4" S	69° 39' 31.9" E	1.00	350M constraint point
ECS 304	19° 15' 0.4" S	69° 39' 37.8" E	1.00	350M constraint point
ECS 305	19° 16' 0.4" S	69° 39' 43.6" E	1.00	350M constraint point
ECS 306	19° 17' 0.4" S	69° 39' 49.2" E	1.00	350M constraint point
ECS 307	19° 18' 0.4" S	69° 39' 54.7" E	1.00	350M constraint point
ECS 308	19° 19' 0.4" S	69° 39' 59.9" E	1.00	350M constraint point
ECS 309	19° 20' 0.4" S	69° 40' 5.0" E	1.00	350M constraint point
ECS 310	19° 21' 0.5" S	69° 40' 9.9" E	1.00	350M constraint point
ECS 311	19° 22' 0.5" S	69° 40' 14.6" E	1.00	350M constraint point
ECS 312	19° 23' 0.6" S	69° 40' 19.2" E	1.00	350M constraint point
ECS 313	19° 24' 0.7" S	69° 40' 23.6" E	1.00	350M constraint point
ECS 314	19° 25' 0.8" S	69° 40' 27.7" E	1.00	350M constraint point
ECS 315	19° 26' 0.9" S	69° 40' 31.7" E	1.00	350M constraint point
ECS 316	19° 27' 1.0" S	69° 40' 35.6" E	1.00	350M constraint point
ECS 317	19° 28' 1.2" S	69° 40' 39.2" E	1.00	350M constraint point
ECS 318	19° 29' 1.3" S	69° 40' 42.7" E	1.00	350M constraint point
ECS 319	19° 30' 1.4" S	69° 40' 45.9" E	1.00	350M constraint point
ECS 320	19° 31' 1.6" S	69° 40' 49.1" E	1.00	350M constraint point
ECS 321	19° 32' 1.8" S	69° 40' 52.0" E	1.00	350M constraint point
ECS 322	19° 33' 1.9" S	69° 40' 54.8" E	1.00	350M constraint point
ECS 323	19° 34' 2.1" S	69° 40' 57.4" E	1.00	350M constraint point
ECS 324	19° 35' 2.3" S	69° 40' 59.9" E	1.00	350M constraint point
ECS 325	19° 36' 2.5" S	69° 41' 2.1" E	1.00	350M constraint point
ECS 326	19° 37' 2.7" S	69° 41' 4.2" E	1.00	350M constraint point
ECS 327	19° 38' 2.9" S	69° 41' 6.1" E	1.00	350M constraint point
ECS 328	19° 39' 3.1" S	69° 41' 7.8" E	1.00	350M constraint point
ECS 329	19° 40' 3.3" S	69° 41' 9.4" E	1.00	350M constraint point
ECS 330	19° 41' 3.5" S	69° 41' 10.7" E	1.00	350M constraint point
ECS 331	19° 42' 3.7" S	69° 41' 11.9" E	1.00	350M constraint point
ECS 332	19° 43' 3.9" S	69° 41' 12.9" E	1.00	350M constraint point
ECS 333	19° 44' 4.2" S	69° 41' 13.7" E	1.00	350M constraint point
ECS 334	19° 45' 4.4" S	69° 41' 14.4" E	1.00	350M constraint point
ECS 335	19° 46' 4.6" S	69° 41' 14.8" E	1.00	350M constraint point

Submission by the Republic of Mauritius to the Commission on the Limits of the Continental Shelf concerning the Extended Continental Shelf in the region of Rodrigues Island



Point ID	Latitude (deg° min' sec")	Longitude (deg° min' sec")	Distance (M)	Article 76 criterion
ECS 336	19° 47' 4.8" S	69° 41' 15.1" E	1.00	350M constraint point
ECS 337	19° 48' 5.1" S	69° 41' 15.2" E	1.00	350M constraint point
ECS 338	19° 49' 5.3" S	69° 41' 15.1" E	1.00	350M constraint point
ECS 339	19° 50' 5.5" S	69° 41' 14.8" E	1.00	350M constraint point
ECS 340	19° 51' 5.7" S	69° 41' 14.4" E	1.00	350M constraint point
ECS 341	19° 52' 6.0" S	69° 41' 13.7" E	1.00	350M constraint point
ECS 342	19° 53' 6.2" S	69° 41' 12.9" E	1.00	350M constraint point
ECS 343	19° 54' 6.4" S	69° 41' 11.9" E	1.00	350M constraint point
ECS 344	19° 54' 11.4" S	69° 41' 11.9" E	0.08	60 M chord / 350M constraint point
ECS 345	19° 54' 39.3" S	69° 40' 47.9" E	0.60	60 M distance criterion
ECS 346	19° 55' 26.1" S	69° 40' 7.8" E	1.00	60 M distance criterion
ECS 347	19° 56' 12.2" S	69° 39' 26.9" E	1.00	60 M distance criterion
ECS 348	19° 56' 57.7" S	69° 38' 45.1" E	1.00	60 M distance criterion
ECS 349	19° 57' 42.5" S	69° 38' 2.6" E	1.00	60 M distance criterion
ECS 350	19° 58' 26.7" S	69° 37' 19.2" E	1.00	60 M distance criterion
ECS 351	19° 59' 10.1" S	69° 36' 35.1" E	1.00	60 M distance criterion
ECS 352	19° 59' 52.9" S	69° 35' 50.2" E	1.00	60 M distance criterion
ECS 353	20° 0' 34.9" S	69° 35' 4.6" E	1.00	60 M distance criterion
ECS 354	20° 1' 16.2" S	69° 34' 18.2" E	1.00	60 M distance criterion
ECS 355	20° 1' 56.8" S	69° 33' 31.1" E	1.00	60 M distance criterion
ECS 356	20° 2' 36.6" S	69° 32' 43.3" E	1.00	60 M distance criterion
ECS 357	20° 3' 15.6" S	69° 31' 54.8" E	1.00	60 M distance criterion
ECS 358	20° 3' 53.9" S	69° 31' 5.6" E	1.00	60 M distance criterion
ECS 359	20° 4' 31.3" S	69° 30' 15.7" E	1.00	60 M distance criterion
ECS 360	20° 5' 8.0" S	69° 29' 25.1" E	1.00	60 M distance criterion
ECS 361	20° 5' 43.9" S	69° 28' 33.9" E	1.00	60 M distance criterion
ECS 362	20° 6' 19.0" S	69° 27' 42.1" E	1.00	60 M distance criterion
ECS 363	20° 6' 53.2" S	69° 26' 49.6" E	1.00	60 M distance criterion
ECS 364	20° 7' 26.7" S	69° 25' 56.6" E	1.00	60 M distance criterion
ECS 365	20° 7' 59.2" S	69° 25' 3.0" E	1.00	60 M distance criterion
ECS 366	20° 33' 23.8" S	68° 41' 58.8" E	47.74	60 M distance criterion
ECS 367	20° 33' 55.3" S	68° 41' 4.3" E	1.00	60 M distance criterion
ECS 368	20° 34' 25.9" S	68° 40' 9.3" E	1.00	60 M distance criterion
ECS 369	20° 34' 55.7" S	68° 39' 13.7" E	1.00	60 M distance criterion
ECS 370	20° 35' 24.6" S	68° 38' 17.6" E	1.00	60 M distance criterion
ECS 371	20° 35' 52.6" S	68° 37' 21.0" E	1.00	60 M distance criterion
ECS 372	20° 36' 19.7" S	68° 36' 23.9" E	1.00	60 M distance criterion

Submission by the Republic of Mauritius to the Commission on the Limits of the Continental Shelf concerning the Extended Continental Shelf in the region of Rodrigues Island



Point ID	Latitude (deg° min' sec")	Longitude (deg° min' sec")	Distance (M)	Article 76 criterion
ECS 373	20° 36' 45.9" S	68° 35' 26.3" E	1.00	60 M distance criterion
ECS 374	20° 37' 11.2" S	68° 34' 28.3" E	1.00	60 M distance criterion
ECS 375	21° 9' 25.4" S	67° 40' 22.5" E	59.98	60 M distance criterion
ECS 376	21° 9' 27.0" S	67° 40' 20.5" E	0.04	60 M distance criterion
ECS 377	21° 10' 4.9" S	67° 39' 30.6" E	1.00	60 M distance criterion
ECS 378	21° 10' 41.9" S	67° 38' 40.0" E	1.00	60 M distance criterion
ECS 379	21° 11' 18.2" S	67° 37' 48.7" E	1.00	60 M distance criterion
ECS 380	21° 11' 53.6" S	67° 36' 56.8" E	1.00	60 M distance criterion
ECS 381	21° 12' 28.3" S	67° 36' 4.2" E	1.00	60 M distance criterion
ECS 382	21° 13' 2.1" S	67° 35' 11.1" E	1.00	60 M distance criterion
ECS 383	21° 13' 35.0" S	67° 34' 17.3" E	1.00	60 M distance criterion
ECS 384	21° 14' 7.1" S	67° 33' 23.0" E	1.00	60 M distance criterion
ECS 385	21° 14' 38.4" S	67° 32' 28.1" E	1.00	60 M distance criterion
ECS 386	21° 15' 8.7" S	67° 31' 32.6" E	1.00	60 M distance criterion
ECS 387	21° 15' 38.2" S	67° 30' 36.6" E	1.00	60 M distance criterion
ECS 388	21° 16' 6.9" S	67° 29' 40.1" E	1.00	60 M distance criterion
ECS 389	21° 16' 34.6" S	67° 28' 43.1" E	1.00	60 M distance criterion
ECS 390	21° 17' 1.4" S	67° 27' 45.5" E	1.00	60 M distance criterion
ECS 391	21° 17' 27.3" S	67° 26' 47.5" E	1.00	60 M distance criterion
ECS 392	21° 49' 10.2" S	66° 32' 6.8" E	59.97	60 M distance criterion
ECS 393	21° 49' 38.6" S	66° 31' 26.9" E	0.78	60 M distance criterion
ECS 394	21° 50' 14.2" S	66° 30' 34.9" E	1.00	60 M distance criterion
ECS 395	21° 50' 48.9" S	66° 29' 42.2" E	1.00	60 M distance criterion
ECS 396	22° 14' 40.0" S	65° 53' 17.5" E	41.34	60 M distance criterion chord / Baseline +200M