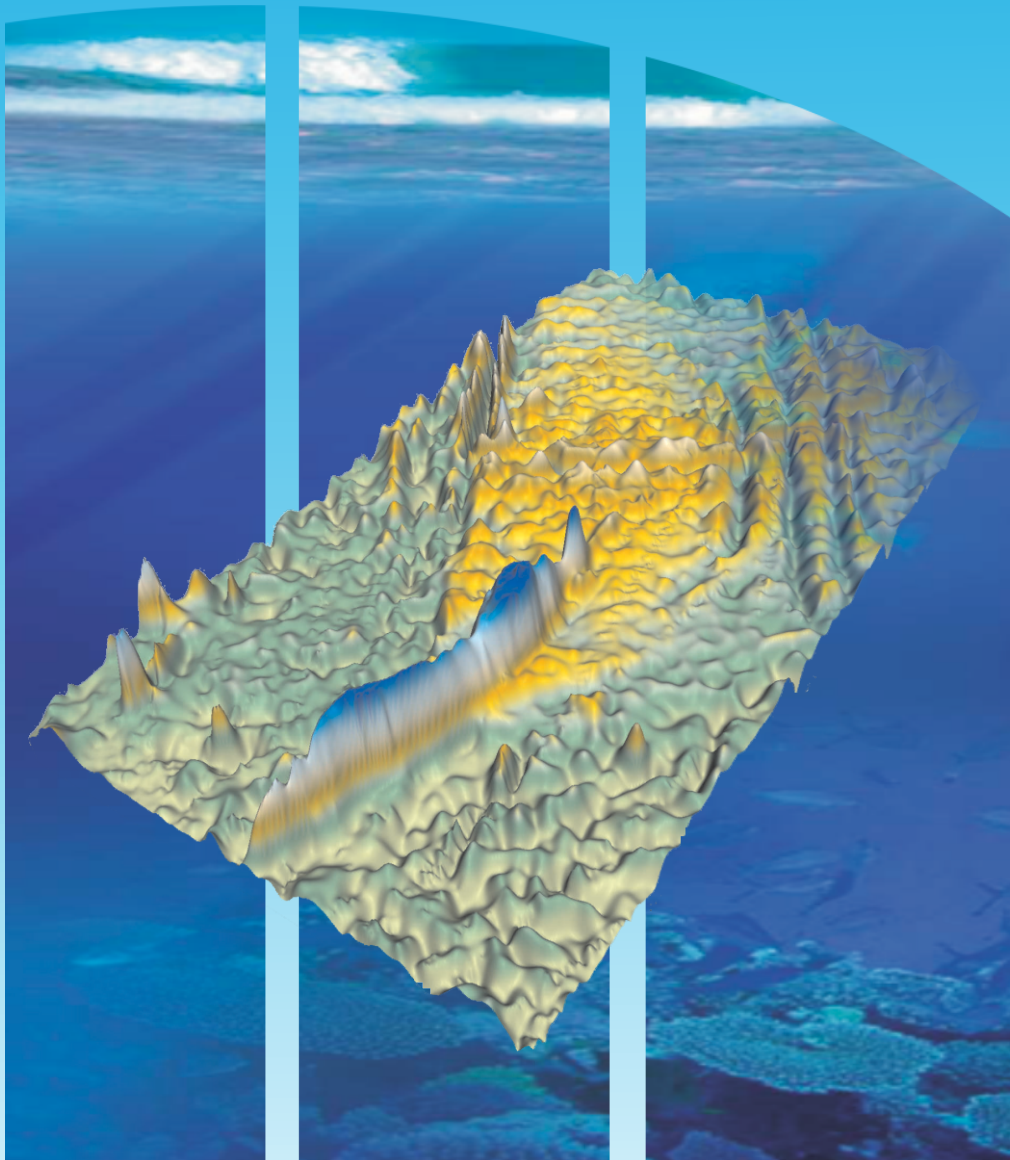




Republic of Mauritius

## **United Nations Convention on the Law of the Sea**

### **Submission by the Republic of Mauritius to the Commission on the Limits of the Continental Shelf concerning the Extended Continental Shelf in the Region of Rodrigues Island**



**EXECUTIVE SUMMARY (REVISED)**

# REPUBLIC OF MAURITIUS



## **Submission by the Republic of Mauritius to the Commission on the Limits of the Continental Shelf concerning the Extended Continental Shelf in the Region of Rodrigues Island**

### **EXECUTIVE SUMMARY (REVISED)**



## PREFACE

**This Submission was prepared by the following Ministries and Statutory Corporations of the Government of the Republic of Mauritius:**

Prime Minister's Office, Department for Continental Shelf and Maritime Zones  
Administration & Exploration.  
Ministry of Foreign Affairs, Regional Integration & International Trade.  
Attorney-General's Office.

**The following acted as advisors to the Government of the Republic of Mauritius in the preparation of this submission:**

Mr. Harald Brekke, former Member of the Commission on the Limits of the Continental Shelf.

Dr. Jérôme Dymont, Director of Research, Centre National de la Recherche Scientifique (CNRS), Institut de Physique du Globe de Paris.

Professor Jan Faleide from the University of Norway.

Mr. Alexander Mikanov from the University of Norway.



## TABLE OF CONTENTS

<b>1. Introduction</b>	<b>5</b>
<b>2. Overview of the Extended Continental Shelf in the Region of Rodrigues Island</b>	<b>9</b>
<b>3. Provisions of Article 76 Invoked</b>	<b>11</b>
<b>4. Outstanding Maritime Delimitations</b>	<b>11</b>
<b>5. Commission Members Who Provided Advice on the Submission</b>	<b>11</b>
<b>6. Outer Limits of the Continental Shelf Concerning the Region of Rodrigues Island</b>	<b>12</b>
<b>7. Maps and Coordinates</b>	<b>13</b>
<b>8. Note of Authentication</b>	<b>17</b>
<b>9. Annexes</b>	<b>18</b>



## LIST OF ANNEXES

**Annex 1:** Table listing the fixed points defining the outer limits of the extended continental shelf in the region of Rodrigues Island (Decimal Degrees)

**MRS-ES-ANNEX 1\_R2**

**Annex 2:** Table listing the fixed points defining the outer limits of the extended continental shelf in the region of Rodrigues Island (Degrees, Minutes and Seconds)

**MRS-ES-ANNEX 2\_R2**

## LIST OF MAPS

(A0 Executive Summary map supplied separately)

**Figure 2:** Map depicting the outer limits of the extended continental shelf of the Republic of Mauritius in the region of Rodrigues Island

**MRS-ES-MAP-1\_R2**

**Figure 3:** Map depicting the outer limits of the extended continental shelf of the Republic of Mauritius in the region of Rodrigues Island displaying the provisions of Article 76 invoked.

**MRS-ES-MAP-2\_R2**



## 1. INTRODUCTION

---

- 1.1 This revised Executive Summary replaces all the previous Executive Summaries submitted by the Republic of Mauritius in respect of its extended continental shelf in the region of Rodrigues Island.
- 1.2 This document has been prepared as part of the Submission by the Republic of Mauritius to the Commission on the Limits of the Continental Shelf ('the Commission') pursuant to paragraph 8 of Article 76 of the 1982 United Nations Convention on the Law of the Sea ('the Convention') in support of the establishment by the Republic of Mauritius of the outer limits of the continental shelf that lie beyond 200 nautical miles (M) from the baselines from which the breadth of the territorial sea of the Republic of Mauritius is measured (hereinafter referred to as 'the territorial sea baselines') in the region of Rodrigues Island.
- 1.3 The Republic of Mauritius consists of a group of islands in the Indian Ocean. The main Island of Mauritius is located at longitude 57° 30' east, and latitude 20° 00' south, approximately 900 km east of Madagascar and is part of the Mascarene Islands. The total land area of the Republic of Mauritius is approximately 1,950 km<sup>2</sup>. Under the *Constitution of Mauritius*, the territory of Mauritius includes:
- the main island of Mauritius;
  - the islands of *Cargados Carajos* (St Brandon Group) located some 402 km north of the main island;
  - the *Agalega* Islands located 933 km north of the main island;
  - *Tromelin* located 580 km north-west of the main island;



- the *Chagos Archipelago* that lies approximately 2200 km north-east of the main island; and,
- *Rodrigues Island* located approximately 560 km east of the main island of Mauritius.

**1.4** The Republic of Mauritius is Party to the Convention, which it signed on the day it was opened for signature on 10 December 1982, and subsequently ratified on 4 November 1994. The *Maritime Zones Act 2005*, which repealed the *Maritime Zones Act 1977*, provides that the provisions of the Convention have the force of law in the Republic of Mauritius, and establishes maritime zones in accordance with the provisions of the Convention, including provisions defining the outer limits of the continental shelf.

**1.5** Under Article 4 of Annex II to the Convention, as supplemented by the decisions of the Eleventh (SPLOS/72) and Eighteenth (SPLOS/183) meetings of the States Parties to the Convention respectively regarding the ten-year period established by Article 4 of Annex II to the Convention, a coastal State for which the Convention entered into force before 13 May 1999 is required to submit particulars of the outer limits of the continental shelf, along with supporting scientific and technical data, to the Commission by 13 May 2009. This Submission by the Republic of Mauritius satisfies that requirement.

**1.6** The Republic of Mauritius has, for the purposes of preparing this Submission, applied the relevant provisions of Article 76 of the Convention, together with the relevant provisions of the *Rules of Procedure of the Commission on the Limits of the Continental Shelf* (CLCS/40/Rev.1) adopted by the Commission on 17 April 2008 (hereinafter referred to as the 'Rules of Procedure') and, the recommendations contained in the *Scientific and Technical Guidelines of the*



*Commission on the Limits of the Continental Shelf (CLCS/11)* adopted by the Commission on 13 May 1999 (hereinafter referred to as ‘the Guidelines’).

- 1.7** This Submission is a partial submission concerning only the extended continental shelf in the region of Rodrigues Island.
- 1.8** In this regard, the Republic of Mauritius has already made a Partial Submission jointly with the Republic of Seychelles on 1 December 2008 in respect of an area of extended continental shelf in the region of the Mascarene Plateau (**SMS-ES-DOC**). The Republic of Mauritius has also made a partial submission in respect of an area of its extended continental shelf in the southern Chagos Archipelago region on 26 March 2019 and another Partial Submission in respect of its extended continental shelf in the northern Chagos Archipelago region on 12 April 2022.
- 1.9** In accordance with Annex III to the Rules of Procedure and paragraphs 9.1.3 to 9.1.6 of the Guidelines, the original submission made by the Republic of Mauritius on 6 May 2009 consisted of three separate parts comprising an Executive Summary; a core analytical and descriptive part (‘the Main Body’); and, a part containing all required supporting scientific and technical data arranged in a series of annexes (‘supporting scientific and technical data’).
- 1.10** The Commission established a Subcommission for the consideration of the partial submission made by the Republic of Mauritius in the region of Rodrigues Island in August 2012. In the course of the consideration of its Partial Submission, Mauritius provided additional data and information to the Subcommission in July 2015 defining a revised outer limit of the Extended Continental Shelf in the region of Rodrigues Island.
- 1.11** On 25<sup>th</sup> May 2016, the Republic of Mauritius informed the Commission that it was in the process of carrying out further marine scientific research in the





region of Rodrigues Island and requested the Subcommission not to proceed with its examination of Partial Submission until such research had been concluded.

- 1.12** On 8<sup>th</sup> September 2017, the Commission informed the Republic of Mauritius that it had suspended consideration of this Partial Submission until further notice.
- 1.13** On 3<sup>rd</sup> March 2020, Mauritius made a revised submission on the basis of additional evidence and supplementary data.
- 1.14** This revised Partial Submission of Mauritius is made following consideration of the Subcommission.

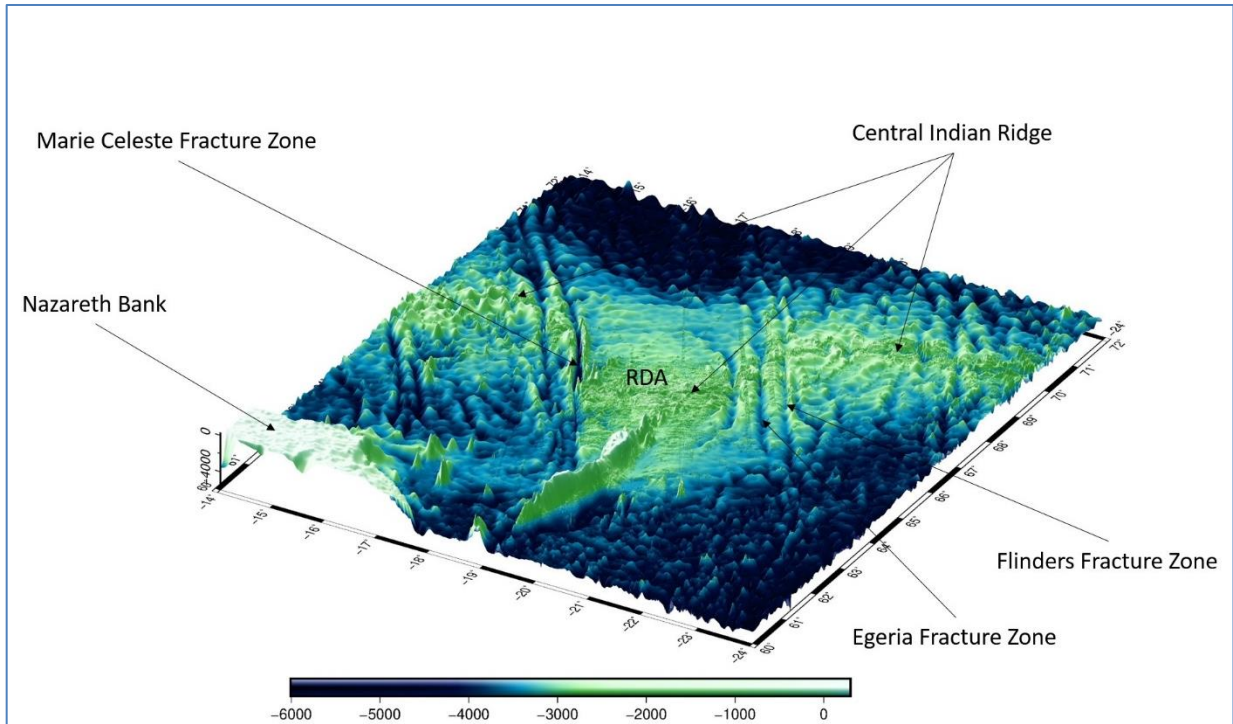


## 2. OVERVIEW OF THE EXTENDED CONTINENTAL SHELF IN THE REGION OF RODRIGUES ISLAND

---

**2.1** Rodrigues Island is a volcanic island located approximately 560 km east of the main island of Mauritius in the middle of the Indian Ocean. It has a size of around 105 km<sup>2</sup> and is surrounded by a vast lagoon with fringing coral reefs. The island has an elongated shape and is approximately 18 km by 6.5 km, rising to a maximum elevation of approximately 400 m. The volcanic island was formed between 1.3 and 1.5 million years as a result of the interaction of the Reunion hotspot and the Central Indian Ridge.

**2.2** The Rodrigues Ridge is a linear volcanic sea floor high, approximately 450 km long, which extends continuously in an east-west trend at 19°S from the region of the Mascarene Plateau to the Central Indian Ridge (CIR) in the east. Two smaller bathymetric features, the Three Magi Ridges and Gasitao Ridge, trend further east of the Rodrigues Ridge up to the CIR. The eastern part of the Ridge, including Rodrigues Island, is embedded in an elevated seafloor feature, referred to in this Submission as the Rodrigues Depth Anomaly. The Rodrigues Depth Anomaly, is a relatively smooth elevation that rises 500 – 1000 m above the surrounding depths of around 4000 m and is delineated by the Marie Celeste Fracture Zone to the north, the Flinders Fracture Zone to the south-east and is marked by relatively steep slopes in the north-east and the south-west (**Figure 1**).



**Figure 1** Perspective topographic and bathymetric map depicting the regional setting of the Rodrigues Island region.



### **3. PROVISIONS OF ARTICLE 76 INVOKED**

---

The Republic of Mauritius invokes paragraphs 4 (a)(ii), 4 (b), 5 and 7 of Article 76 of the Convention in support of this Submission concerning the extended continental shelf in the region of Rodrigues Island.

### **4. OUTSTANDING MARITIME DELIMITATIONS**

---

The Republic of Mauritius wishes to inform the Commission that the area of extended continental shelf in this Submission is not the subject of any dispute between it and any other State(s) pursuant to paragraph 2(a) of Annex I to the Rules of Procedure.

### **5. COMMISSION MEMBERS WHO PROVIDED ADVICE ON THE SUBMISSION**

---

The Republic of Mauritius was assisted in the preparation of this revised submission by the former member of the Commission on the Limits of the Continental Shelf, Mr Harald Brekke (1997 – 2012).



## **6. OUTER LIMITS OF THE CONTINENTAL SHELF CONCERNING THE REGION OF RODRIGUES ISLAND**

---

- 6.1** As provided for under paragraph 1 of Article 76 of the Convention, the Republic of Mauritius has a continental shelf comprising the seabed and subsoil of the submarine areas that extend beyond its territorial sea throughout the natural prolongation of its land territory to the outer edge of the continental margin, up to the limits provided for in paragraphs 4 to 6 of Article 76 of the Convention or, to a distance of 200 M from the territorial sea baselines where the outer edge of the continental margin does not extend up to that distance.
- 6.2** Paragraphs 4 to 6 of Article 76 of the Convention set out the manner in which a coastal State may establish the outer edge of its continental margin and its extended continental shelf, wherever that margin extends beyond 200 M measured from the territorial sea baselines.
- 6.3** As set out in paragraph 7 of Article 76 of the Convention, a coastal State is to delineate the outer limits of the extended continental shelf by straight lines not exceeding 60 M in length, connecting fixed points defined by coordinates of latitude and longitude.
- 6.4** The information included by the Republic of Mauritius in support of this revised Partial Submission established that the outer edge of the continental margin in the relevant land territory of the Republic of Mauritius in the region of Rodrigues Island extends beyond 200 M measured from the territorial sea baselines thus satisfying the test of appurtenance.
- 6.5** Section 7 of this revised Executive Summary document provides an outline of the Article 76 fixed points used to construct the outer limit line in this region.

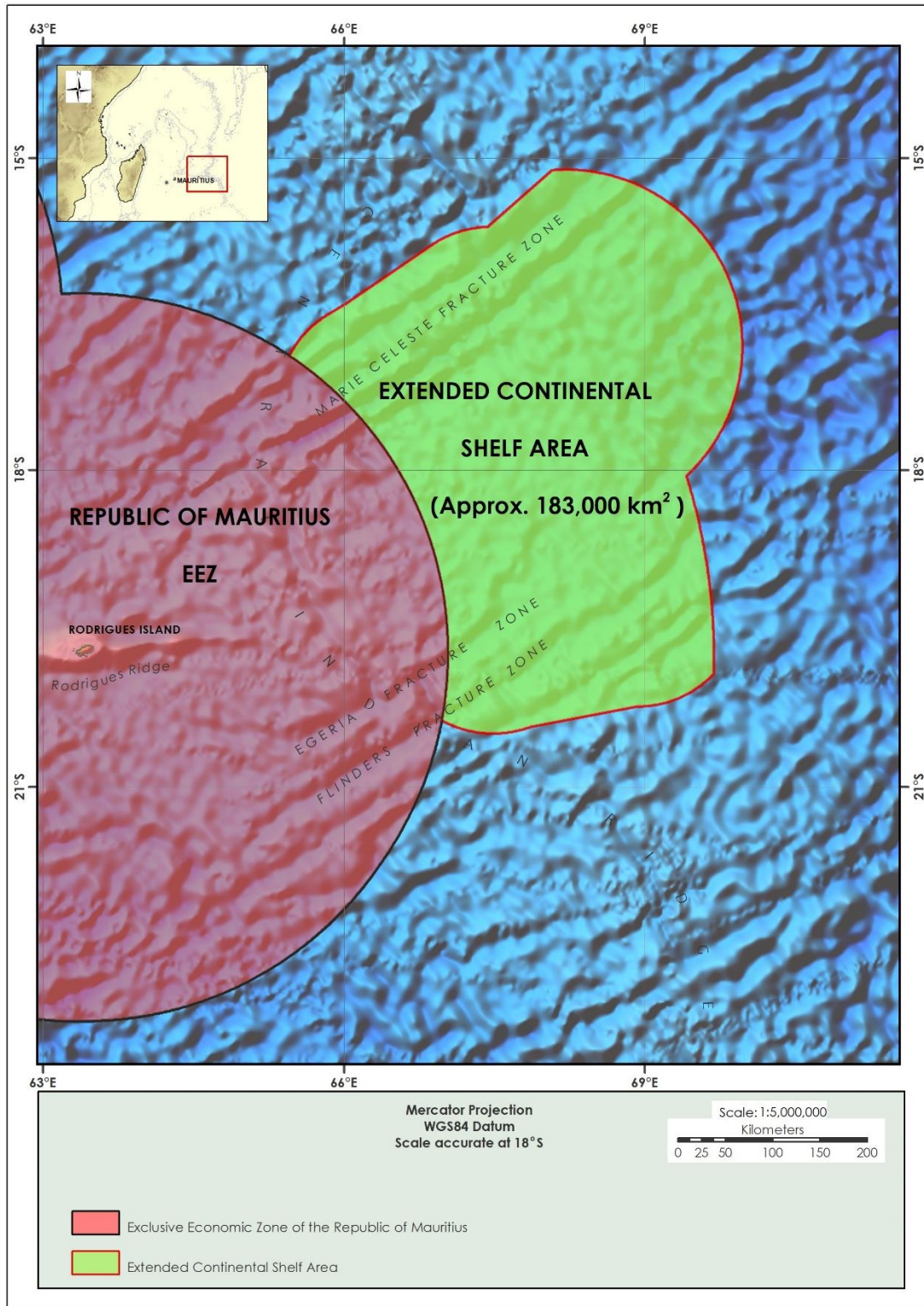


## 7. MAPS AND COORDINATES

---

- 7.1** Two maps at an appropriate scale are included in this revised Executive Summary as **Figure 2 (MRS-ES-MAP-1\_R2)** and **Figure 3 (MRS-ES-MAP-2\_R2)** respectively, and as separate A0-size maps. **Figure 2** depicts the outer limits of the extended continental shelf of the Republic of Mauritius in the region of Rodrigues Island. **Figure 3** depicts the outer limits of the extended continental shelf, together with the location of the Article 76 fixed points that define the outer limits.
- 7.2** Lists of coordinates of the Article 76 fixed points that define the outer limits of the extended continental shelf submitted by the Republic of Mauritius are supplied in two annexes. **MRS-ES-ANNEX 1\_R2** lists the fixed points defining the outer limits of the extended continental shelf in decimal degrees. **MRS-ES-ANNEX 2\_R2** lists the same points in degrees, minutes and seconds. The provisions of Article 76 invoked to define each fixed point, as well as the distance between adjacent points, are indicated in both annexes. Wherever there is discrepancy between the two formats of the coordinates for a particular Article 76 fixed point, the Republic of Mauritius will apply the coordinates farthest seaward from its territorial sea baselines, subject to compliance with the requirements of the relevant provisions of Article 76 of the Convention.





**Figure 2** Map depicting the outer limits of the extended continental shelf of the Republic of Mauritius in the region of Rodrigues Island

MRS-ES-MAP-1\_R2

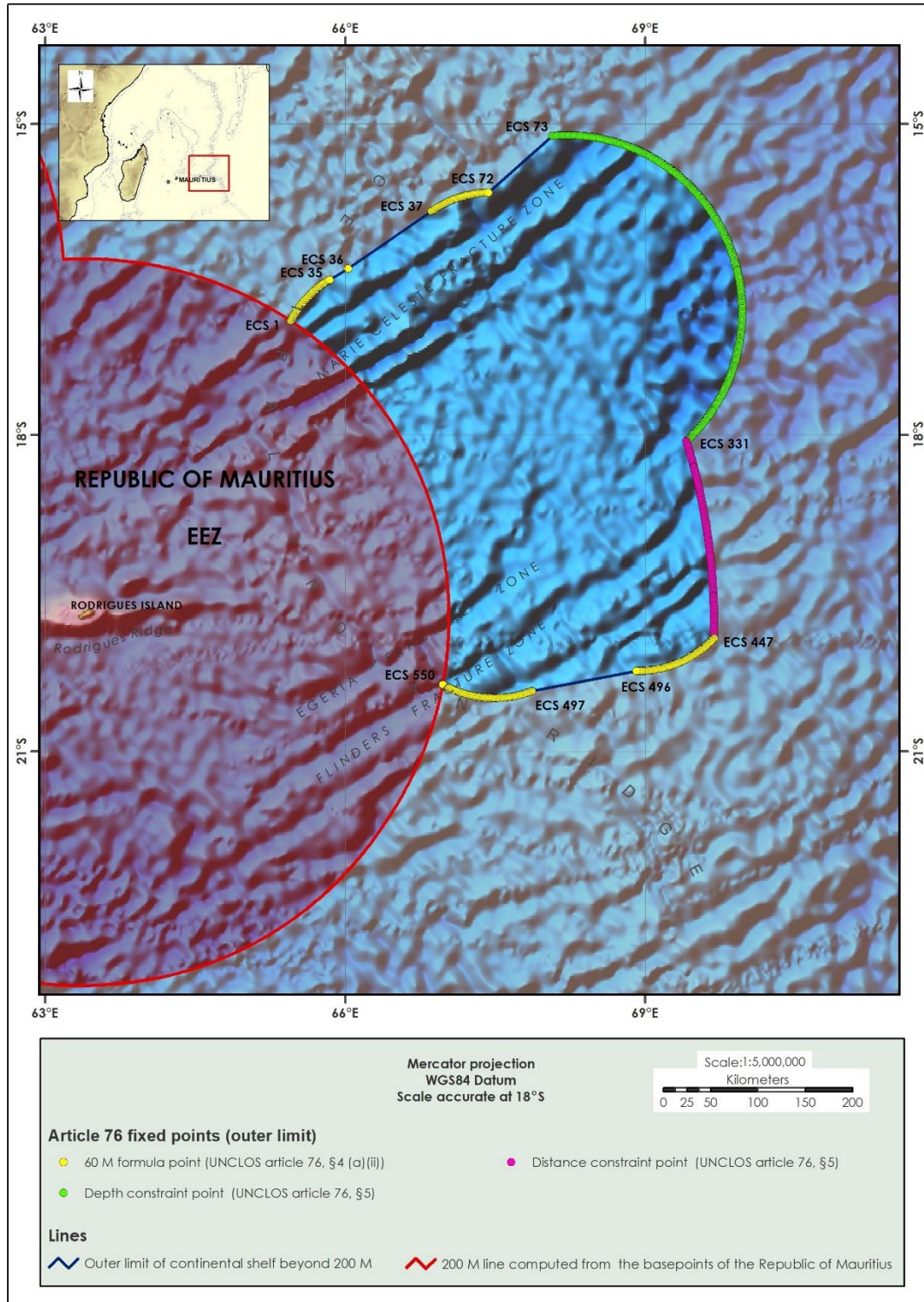
Submission by the Republic of Mauritius to the Commission on the Limits of the Continental Shelf concerning the Extended Continental Shelf in the region of Rodrigues Island



**7.3** The outer limits of the extended continental shelf in the region of Rodrigues Island enclose an area of approximately **183,000** square kilometres extending beyond 200 M from the territorial sea baselines of the Republic of Mauritius and are defined by an outer limit line composed of **550** fixed points, of which:

- **174** points are defined by arcs 60 M from the foot of the slope (Article 76, paragraph 4(a)(ii) of the Convention);
- **116** points are defined by the 350 M constraint line (Distance Constraint) from the territorial sea baseline of the Republic of Mauritius (Article 76, paragraph 5 of the Convention);
- **258** points are defined by the 2500 m plus 100 M depth constraint line (Depth Constraint) from the 2500 m depth point (Article 76, paragraph 5 of the Convention);
- **2** points (**ECS 1** and **ECS 550**), where the outer limit line of the extended continental shelf commences and terminates respectively at points located along the 200 M from the territorial sea baselines of the Republic of Mauritius in the region of Rodrigues Island.





**Figure 3** Map depicting the outer limits of the extended continental shelf of the Republic of Mauritius in the region of Rodrigues Island displaying the provisions of Article 76 invoked.

MRS-ES-MAP-2\_R2



- 7.4** Each successive pair of fixed points defining the outer limits of the extended continental shelf is connected by geodesics not exceeding 60 M in length, drawn in accordance with paragraph 7 of Article 76 of the Convention.
- 7.5** The list of Article 76 fixed points delineating the outer limits of the extended continental shelf in the region of Rodrigues Island is supplied in annexes **MRS-ES-ANNEX 1\_R2** and **MRS-ES-ANNEX 2\_R2** to this revised Executive Summary.

**8. NOTE OF AUTHENTICATION**

---

All maps, figures, charts and databases forming part of this Partial Submission have been prepared by the Department for Continental Shelf and Maritime Zones Administration & Exploration of the Prime Minister's Office which has also been entrusted by the Government of the Republic of Mauritius with the responsibility for certifying their quality and reliability.



## 9. ANNEXES

### MRS-ES-ANNEX 1\_R2

**Table listing the fixed points defining the outer limits of the extended continental shelf in the region of Rodrigues Island (Decimal Degrees)**

Point ID	Longitude (decimal deg°)	Latitude (decimal deg°)	Distance (M)	Article 76 criterion
ECS 1	65.45455577	-16.90447989	0.00	60 M distance criterion chord / Baseline +200M
ECS 2	65.45521460	-16.90324679	0.08	60 M distance criterion
ECS 3	65.46342136	-16.88849466	1.00	60 M distance criterion
ECS 4	65.47188104	-16.87387587	1.00	60 M distance criterion
ECS 5	65.48059125	-16.85939446	1.00	60 M distance criterion
ECS 6	65.48954953	-16.84505442	1.00	60 M distance criterion
ECS 7	65.49875335	-16.83085970	1.00	60 M distance criterion
ECS 8	65.50820014	-16.81681421	1.00	60 M distance criterion
ECS 9	65.51788723	-16.80292182	1.00	60 M distance criterion
ECS 10	65.52781191	-16.78918635	1.00	60 M distance criterion
ECS 11	65.53797140	-16.77561159	1.00	60 M distance criterion
ECS 12	65.54836286	-16.76220126	1.00	60 M distance criterion
ECS 13	65.55898337	-16.74895907	1.00	60 M distance criterion
ECS 14	65.56982997	-16.73588866	1.00	60 M distance criterion
ECS 15	65.58089963	-16.72299361	1.00	60 M distance criterion
ECS 16	65.59218927	-16.71027749	1.00	60 M distance criterion
ECS 17	65.60369574	-16.69774378	1.00	60 M distance criterion
ECS 18	65.61541583	-16.68539592	1.00	60 M distance criterion
ECS 19	65.62734629	-16.67323733	1.00	60 M distance criterion
ECS 20	65.63948380	-16.66127132	1.00	60 M distance criterion
ECS 21	65.65182498	-16.64950121	1.00	60 M distance criterion
ECS 22	65.66436642	-16.63793021	1.00	60 M distance criterion
ECS 23	65.67710464	-16.62656151	1.00	60 M distance criterion
ECS 24	65.69003610	-16.61539822	1.00	60 M distance criterion
ECS 25	65.70315721	-16.60444342	1.00	60 M distance criterion
ECS 26	65.71646436	-16.59370012	1.00	60 M distance criterion
ECS 27	65.72995386	-16.58317126	1.00	60 M distance criterion
ECS 28	65.74362197	-16.57285972	1.00	60 M distance criterion
ECS 29	65.75746493	-16.56276836	1.00	60 M distance criterion
ECS 30	65.77147890	-16.55289992	1.00	60 M distance criterion
ECS 31	65.78566003	-16.54325712	1.00	60 M distance criterion

Submission by the Republic of Mauritius to the Commission on the Limits of the Continental Shelf concerning the Extended Continental Shelf in the region of Rodrigues Island



Point ID	Longitude (decimal deg°)	Latitude (decimal deg°)	Distance (M)	Article 76 criterion
ECS 32	65.80000439	-16.53384260	1.00	60 M distance criterion
ECS 33	65.81450804	-16.52465896	1.00	60 M distance criterion
ECS 34	65.82916696	-16.51570869	1.00	60 M distance criterion
ECS 35	65.84397714	-16.50699427	1.00	60 M distance criterion
ECS 36	66.02947239	-16.39887609	12.50	60 M distance criterion
ECS 37	66.86400326	-15.84590924	58.44	60 M distance criterion
ECS 38	66.87828060	-15.83647035	1.00	60 M distance criterion
ECS 39	66.89271713	-15.82726211	1.00	60 M distance criterion
ECS 40	66.90730888	-15.81828707	1.00	60 M distance criterion
ECS 41	66.92205182	-15.80954767	1.00	60 M distance criterion
ECS 42	66.93694188	-15.80104633	1.00	60 M distance criterion
ECS 43	66.95197498	-15.79278536	1.00	60 M distance criterion
ECS 44	66.96714698	-15.78476705	1.00	60 M distance criterion
ECS 45	66.98245368	-15.77699358	1.00	60 M distance criterion
ECS 46	66.99789090	-15.76946709	1.00	60 M distance criterion
ECS 47	67.01345438	-15.76218964	1.00	60 M distance criterion
ECS 48	67.02913985	-15.75516323	1.00	60 M distance criterion
ECS 49	67.04494299	-15.74838978	1.00	60 M distance criterion
ECS 50	67.06085947	-15.74187116	1.00	60 M distance criterion
ECS 51	67.07688491	-15.73560914	1.00	60 M distance criterion
ECS 52	67.09301491	-15.72960544	1.00	60 M distance criterion
ECS 53	67.10924505	-15.72386172	1.00	60 M distance criterion
ECS 54	67.12557088	-15.71837954	1.00	60 M distance criterion
ECS 55	67.14198791	-15.71316040	1.00	60 M distance criterion
ECS 56	67.15849164	-15.70820574	1.00	60 M distance criterion
ECS 57	67.17507756	-15.70351692	1.00	60 M distance criterion
ECS 58	67.19174110	-15.69909521	1.00	60 M distance criterion
ECS 59	67.20847771	-15.69494183	1.00	60 M distance criterion
ECS 60	67.22528279	-15.69105792	1.00	60 M distance criterion
ECS 61	67.24215175	-15.68744454	1.00	60 M distance criterion
ECS 62	67.25907996	-15.68410268	1.00	60 M distance criterion
ECS 63	67.27606279	-15.68103326	1.00	60 M distance criterion
ECS 64	67.29309559	-15.67823711	1.00	60 M distance criterion
ECS 65	67.31017368	-15.67571501	1.00	60 M distance criterion
ECS 66	67.32729240	-15.67346764	1.00	60 M distance criterion
ECS 67	67.34444706	-15.67149562	1.00	60 M distance criterion
ECS 68	67.36163296	-15.66979949	1.00	60 M distance criterion
ECS 69	67.37884539	-15.66837971	1.00	60 M distance criterion

Submission by the Republic of Mauritius to the Commission on the Limits of the Continental Shelf concerning the Extended Continental Shelf in the region of Rodrigues Island





Point ID	Longitude (decimal deg°)	Latitude (decimal deg°)	Distance (M)	Article 76 criterion
ECS 70	67.39607966	-15.66723668	1.00	60 M distance criterion
ECS 71	67.41333103	-15.66637070	1.00	60 M distance criterion
ECS 72	67.43059480	-15.66578201	1.00	60 M distance criterion
ECS 73	68.07286025	-15.11683080	49.62	60 M chord / Depth constraint point
ECS 74	68.07628376	-15.11653643	0.20	Depth constraint point
ECS 75	68.09346006	-15.11522671	1.00	Depth constraint point
ECS 76	68.11064880	-15.11408256	1.00	Depth constraint point
ECS 77	68.12784828	-15.11310409	1.00	Depth constraint point
ECS 78	68.14505683	-15.11229140	1.00	Depth constraint point
ECS 79	68.16227278	-15.11164458	1.00	Depth constraint point
ECS 80	68.17949444	-15.11116367	1.00	Depth constraint point
ECS 81	68.19672013	-15.11084874	1.00	Depth constraint point
ECS 82	68.21394817	-15.11069980	1.00	Depth constraint point
ECS 83	68.23117688	-15.11071688	1.00	Depth constraint point
ECS 84	68.24840457	-15.11089997	1.00	Depth constraint point
ECS 85	68.26562957	-15.11124905	1.00	Depth constraint point
ECS 86	68.28285019	-15.11176410	1.00	Depth constraint point
ECS 87	68.30006475	-15.11244506	1.00	Depth constraint point
ECS 88	68.31727158	-15.11329186	1.00	Depth constraint point
ECS 89	68.33446899	-15.11430442	1.00	Depth constraint point
ECS 90	68.35165530	-15.11548264	1.00	Depth constraint point
ECS 91	68.36882884	-15.11682641	1.00	Depth constraint point
ECS 92	68.38598792	-15.11833560	1.00	Depth constraint point
ECS 93	68.40313089	-15.12001005	1.00	Depth constraint point
ECS 94	68.42025605	-15.12184961	1.00	Depth constraint point
ECS 95	68.43736174	-15.12385409	1.00	Depth constraint point
ECS 96	68.45444629	-15.12602330	1.00	Depth constraint point
ECS 97	68.47150803	-15.12835703	1.00	Depth constraint point
ECS 98	68.48854529	-15.13085505	1.00	Depth constraint point
ECS 99	68.50555641	-15.13351711	1.00	Depth constraint point
ECS 100	68.52253973	-15.13634295	1.00	Depth constraint point
ECS 101	68.53949359	-15.13933230	1.00	Depth constraint point
ECS 102	68.55641632	-15.14248487	1.00	Depth constraint point
ECS 103	68.57330629	-15.14580034	1.00	Depth constraint point
ECS 104	68.59016183	-15.14927840	1.00	Depth constraint point
ECS 105	68.60698131	-15.15291870	1.00	Depth constraint point
ECS 106	68.62376306	-15.15672089	1.00	Depth constraint point
ECS 107	68.64050547	-15.16068459	1.00	Depth constraint point

Submission by the Republic of Mauritius to the Commission on the Limits of the Continental Shelf concerning the Extended Continental Shelf in the region of Rodrigues Island



Point ID	Longitude (decimal deg°)	Latitude (decimal deg°)	Distance (M)	Article 76 criterion
ECS 108	68.65720688	-15.16480942	1.00	Depth constraint point
ECS 109	68.67386566	-15.16909498	1.00	Depth constraint point
ECS 110	68.69048019	-15.17354083	1.00	Depth constraint point
ECS 111	68.70704884	-15.17814656	1.00	Depth constraint point
ECS 112	68.72356998	-15.18291171	1.00	Depth constraint point
ECS 113	68.74004200	-15.18783582	1.00	Depth constraint point
ECS 114	68.75646330	-15.19291839	1.00	Depth constraint point
ECS 115	68.77283225	-15.19815894	1.00	Depth constraint point
ECS 116	68.78914726	-15.20355695	1.00	Depth constraint point
ECS 117	68.80540673	-15.20911189	1.00	Depth constraint point
ECS 118	68.82160907	-15.21482323	1.00	Depth constraint point
ECS 119	68.83775268	-15.22069040	1.00	Depth constraint point
ECS 120	68.85383599	-15.22671282	1.00	Depth constraint point
ECS 121	68.86985742	-15.23288991	1.00	Depth constraint point
ECS 122	68.88581539	-15.23922107	1.00	Depth constraint point
ECS 123	68.90170835	-15.24570566	1.00	Depth constraint point
ECS 124	68.91753473	-15.25234307	1.00	Depth constraint point
ECS 125	68.93329298	-15.25913264	1.00	Depth constraint point
ECS 126	68.94898155	-15.26607370	1.00	Depth constraint point
ECS 127	68.96459890	-15.27316557	1.00	Depth constraint point
ECS 128	68.98014351	-15.28040757	1.00	Depth constraint point
ECS 129	68.99561383	-15.28779898	1.00	Depth constraint point
ECS 130	69.01100835	-15.29533907	1.00	Depth constraint point
ECS 131	69.02632555	-15.30302712	1.00	Depth constraint point
ECS 132	69.04156394	-15.31086236	1.00	Depth constraint point
ECS 133	69.05672200	-15.31884403	1.00	Depth constraint point
ECS 134	69.07179826	-15.32697134	1.00	Depth constraint point
ECS 135	69.08679121	-15.33524351	1.00	Depth constraint point
ECS 136	69.10169939	-15.34365971	1.00	Depth constraint point
ECS 137	69.11652133	-15.35221913	1.00	Depth constraint point
ECS 138	69.13125557	-15.36092092	1.00	Depth constraint point
ECS 139	69.14590065	-15.36976424	1.00	Depth constraint point
ECS 140	69.16045512	-15.37874822	1.00	Depth constraint point
ECS 141	69.17491756	-15.38787197	1.00	Depth constraint point
ECS 142	69.18928654	-15.39713460	1.00	Depth constraint point
ECS 143	69.20356063	-15.40653520	1.00	Depth constraint point
ECS 144	69.21773842	-15.41607286	1.00	Depth constraint point
ECS 145	69.23181852	-15.42574662	1.00	Depth constraint point

Submission by the Republic of Mauritius to the Commission on the Limits of the Continental Shelf concerning the Extended Continental Shelf in the region of Rodrigues Island



Point ID	Longitude (decimal deg°)	Latitude (decimal deg°)	Distance (M)	Article 76 criterion
ECS 146	69.24579953	-15.43555556	1.00	Depth constraint point
ECS 147	69.25968006	-15.44549870	1.00	Depth constraint point
ECS 148	69.27345875	-15.45557507	1.00	Depth constraint point
ECS 149	69.28713423	-15.46578368	1.00	Depth constraint point
ECS 150	69.30070514	-15.47612352	1.00	Depth constraint point
ECS 151	69.31417013	-15.48659359	1.00	Depth constraint point
ECS 152	69.32752788	-15.49719286	1.00	Depth constraint point
ECS 153	69.34077705	-15.50792028	1.00	Depth constraint point
ECS 154	69.35391634	-15.51877480	1.00	Depth constraint point
ECS 155	69.36694443	-15.52975535	1.00	Depth constraint point
ECS 156	69.37986002	-15.54086087	1.00	Depth constraint point
ECS 157	69.39266185	-15.55209025	1.00	Depth constraint point
ECS 158	69.40534862	-15.56344239	1.00	Depth constraint point
ECS 159	69.41791908	-15.57491618	1.00	Depth constraint point
ECS 160	69.43037197	-15.58651049	1.00	Depth constraint point
ECS 161	69.44270606	-15.59822419	1.00	Depth constraint point
ECS 162	69.45299899	-15.60817950	0.84	Depth constraint point
ECS 163	69.46071032	-15.61573126	0.63	Depth constraint point
ECS 164	69.47275844	-15.62772285	1.00	Depth constraint point
ECS 165	69.48034284	-15.63539505	0.63	Depth constraint point
ECS 166	69.48987682	-15.64511532	0.80	Depth constraint point
ECS 167	69.50166393	-15.65734960	1.00	Depth constraint point
ECS 168	69.51332562	-15.66969681	1.00	Depth constraint point
ECS 169	69.52486072	-15.68215573	1.00	Depth constraint point
ECS 170	69.53626809	-15.69472514	1.00	Depth constraint point
ECS 171	69.54754657	-15.70740379	1.00	Depth constraint point
ECS 172	69.55869503	-15.72019045	1.00	Depth constraint point
ECS 173	69.56971236	-15.73308386	1.00	Depth constraint point
ECS 174	69.58059744	-15.74608273	1.00	Depth constraint point
ECS 175	69.59134919	-15.75918580	1.00	Depth constraint point
ECS 176	69.60196651	-15.77239178	1.00	Depth constraint point
ECS 177	69.61244834	-15.78569935	1.00	Depth constraint point
ECS 178	69.62279362	-15.79910722	1.00	Depth constraint point
ECS 179	69.63300130	-15.81261405	1.00	Depth constraint point
ECS 180	69.64307036	-15.82621853	1.00	Depth constraint point
ECS 181	69.65299977	-15.83991930	1.00	Depth constraint point
ECS 182	69.66278853	-15.85371503	1.00	Depth constraint point
ECS 183	69.67243565	-15.86760433	1.00	Depth constraint point

Submission by the Republic of Mauritius to the Commission on the Limits of the Continental Shelf concerning the Extended Continental Shelf in the region of Rodrigues Island



Point ID	Longitude (decimal deg°)	Latitude (decimal deg°)	Distance (M)	Article 76 criterion
ECS 184	69.68194015	-15.88158586	1.00	Depth constraint point
ECS 185	69.69130106	-15.89565822	1.00	Depth constraint point
ECS 186	69.70051743	-15.90982004	1.00	Depth constraint point
ECS 187	69.70958832	-15.92406990	1.00	Depth constraint point
ECS 188	69.71851281	-15.93840641	1.00	Depth constraint point
ECS 189	69.72728999	-15.95282816	1.00	Depth constraint point
ECS 190	69.73591896	-15.96733370	1.00	Depth constraint point
ECS 191	69.74439883	-15.98192163	1.00	Depth constraint point
ECS 192	69.75272875	-15.99659048	1.00	Depth constraint point
ECS 193	69.76090785	-16.01133883	1.00	Depth constraint point
ECS 194	69.76893529	-16.02616519	1.00	Depth constraint point
ECS 195	69.77681025	-16.04106812	1.00	Depth constraint point
ECS 196	69.78453192	-16.05604614	1.00	Depth constraint point
ECS 197	69.79209950	-16.07109777	1.00	Depth constraint point
ECS 198	69.79951222	-16.08622151	1.00	Depth constraint point
ECS 199	69.80676929	-16.10141588	1.00	Depth constraint point
ECS 200	69.81386997	-16.11667937	1.00	Depth constraint point
ECS 201	69.82081353	-16.13201047	1.00	Depth constraint point
ECS 202	69.82759924	-16.14740766	1.00	Depth constraint point
ECS 203	69.83422639	-16.16286942	1.00	Depth constraint point
ECS 204	69.84069429	-16.17839421	1.00	Depth constraint point
ECS 205	69.84576124	-16.19087772	0.80	Depth constraint point
ECS 206	69.85169945	-16.20542941	0.93	Depth constraint point
ECS 207	69.85789770	-16.22105704	1.00	Depth constraint point
ECS 208	69.86354529	-16.23571661	0.93	Depth constraint point
ECS 209	69.86756759	-16.24641766	0.68	Depth constraint point
ECS 210	69.87334426	-16.26219570	1.00	Depth constraint point
ECS 211	69.87895825	-16.27802856	1.00	Depth constraint point
ECS 212	69.88440899	-16.29391467	1.00	Depth constraint point
ECS 213	69.88969588	-16.30985246	1.00	Depth constraint point
ECS 214	69.89481836	-16.32584035	1.00	Depth constraint point
ECS 215	69.89977589	-16.34187674	1.00	Depth constraint point
ECS 216	69.90456793	-16.35796006	1.00	Depth constraint point
ECS 217	69.90919397	-16.37408870	1.00	Depth constraint point
ECS 218	69.91365351	-16.39026106	1.00	Depth constraint point
ECS 219	69.91794606	-16.40647553	1.00	Depth constraint point
ECS 220	69.92077044	-16.41752885	0.68	Depth constraint point
ECS 221	69.92375523	-16.42957474	0.74	Depth constraint point

Submission by the Republic of Mauritius to the Commission on the Limits of the Continental Shelf concerning the Extended Continental Shelf in the region of Rodrigues Island





Point ID	Longitude (decimal deg°)	Latitude (decimal deg°)	Distance (M)	Article 76 criterion
ECS 222	69.92764203	-16.44588440	1.00	Depth constraint point
ECS 223	69.93136032	-16.46223065	1.00	Depth constraint point
ECS 224	69.93490968	-16.47861188	1.00	Depth constraint point
ECS 225	69.93828973	-16.49502644	1.00	Depth constraint point
ECS 226	69.94150007	-16.51147270	1.00	Depth constraint point
ECS 227	69.94454035	-16.52794904	1.00	Depth constraint point
ECS 228	69.94741023	-16.54445380	1.00	Depth constraint point
ECS 229	69.95010937	-16.56098535	1.00	Depth constraint point
ECS 230	69.95263747	-16.57754204	1.00	Depth constraint point
ECS 231	69.95499422	-16.59412223	1.00	Depth constraint point
ECS 232	69.95717935	-16.61072425	1.00	Depth constraint point
ECS 233	69.95919261	-16.62734647	1.00	Depth constraint point
ECS 234	69.96103373	-16.64398721	1.00	Depth constraint point
ECS 235	69.96270250	-16.66064483	1.00	Depth constraint point
ECS 236	69.96419871	-16.67731766	1.00	Depth constraint point
ECS 237	69.96519479	-16.68966565	0.74	Depth constraint point
ECS 238	69.96625653	-16.70436032	0.88	Depth constraint point
ECS 239	69.96730011	-16.72106509	1.00	Depth constraint point
ECS 240	69.96817049	-16.73777905	1.00	Depth constraint point
ECS 241	69.96886756	-16.75450053	1.00	Depth constraint point
ECS 242	69.96939120	-16.77122786	1.00	Depth constraint point
ECS 243	69.96974131	-16.78795937	1.00	Depth constraint point
ECS 244	69.96991781	-16.80469339	1.00	Depth constraint point
ECS 245	69.96992063	-16.82142824	1.00	Depth constraint point
ECS 246	69.96974973	-16.83816226	1.00	Depth constraint point
ECS 247	69.96940509	-16.85489376	1.00	Depth constraint point
ECS 248	69.96888668	-16.87162109	1.00	Depth constraint point
ECS 249	69.96819452	-16.88834256	1.00	Depth constraint point
ECS 250	69.96732863	-16.90505650	1.00	Depth constraint point
ECS 251	69.96628906	-16.92176124	1.00	Depth constraint point
ECS 252	69.96523033	-16.93645587	0.88	Depth constraint point
ECS 253	69.96403079	-16.95126676	0.89	Depth constraint point
ECS 254	69.96251580	-16.96793773	1.00	Depth constraint point
ECS 255	69.96082742	-16.98459326	1.00	Depth constraint point
ECS 256	69.95896577	-17.00123167	1.00	Depth constraint point
ECS 257	69.95716808	-17.01598635	0.89	Depth constraint point
ECS 258	69.95557282	-17.02823572	0.74	Depth constraint point
ECS 259	69.95326018	-17.04482166	1.00	Depth constraint point

Submission by the Republic of Mauritius to the Commission on the Limits of the Continental Shelf concerning the Extended Continental Shelf in the region of Rodrigues Island



Point ID	Longitude (decimal deg°)	Latitude (decimal deg°)	Distance (M)	Article 76 criterion
ECS 260	69.95077487	-17.06138448	1.00	Depth constraint point
ECS 261	69.94811708	-17.07792251	1.00	Depth constraint point
ECS 262	69.94528705	-17.09443408	1.00	Depth constraint point
ECS 263	69.94308905	-17.10659683	0.74	Depth constraint point
ECS 264	69.94094542	-17.11841477	0.72	Depth constraint point
ECS 265	69.93780768	-17.13487489	1.00	Depth constraint point
ECS 266	69.93449838	-17.15130394	1.00	Depth constraint point
ECS 267	69.93101781	-17.16770028	1.00	Depth constraint point
ECS 268	69.92736629	-17.18406226	1.00	Depth constraint point
ECS 269	69.92354412	-17.20038823	1.00	Depth constraint point
ECS 270	69.91955166	-17.21667656	1.00	Depth constraint point
ECS 271	69.91538925	-17.23292560	1.00	Depth constraint point
ECS 272	69.91105726	-17.24913372	1.00	Depth constraint point
ECS 273	69.90655610	-17.26529929	1.00	Depth constraint point
ECS 274	69.90188617	-17.28142068	1.00	Depth constraint point
ECS 275	69.89704788	-17.29749627	1.00	Depth constraint point
ECS 276	69.89204170	-17.31352445	1.00	Depth constraint point
ECS 277	69.88686807	-17.32950359	1.00	Depth constraint point
ECS 278	69.88305647	-17.34092747	0.72	Depth constraint point
ECS 279	69.87992459	-17.35030066	0.59	Depth constraint point
ECS 280	69.87446835	-17.36619313	1.00	Depth constraint point
ECS 281	69.86884597	-17.38203224	1.00	Depth constraint point
ECS 282	69.86305799	-17.39781639	1.00	Depth constraint point
ECS 283	69.85710494	-17.41354400	1.00	Depth constraint point
ECS 284	69.85098738	-17.42921348	1.00	Depth constraint point
ECS 285	69.84470588	-17.44482324	1.00	Depth constraint point
ECS 286	69.83826105	-17.46037172	1.00	Depth constraint point
ECS 287	69.83165348	-17.47585734	1.00	Depth constraint point
ECS 288	69.82488379	-17.49127853	1.00	Depth constraint point
ECS 289	69.81795264	-17.50663375	1.00	Depth constraint point
ECS 290	69.81086068	-17.52192143	1.00	Depth constraint point
ECS 291	69.80360859	-17.53714004	1.00	Depth constraint point
ECS 292	69.79619705	-17.55228804	1.00	Depth constraint point
ECS 293	69.78862679	-17.56736389	1.00	Depth constraint point
ECS 294	69.78089851	-17.58236606	1.00	Depth constraint point
ECS 295	69.77301297	-17.59729305	1.00	Depth constraint point
ECS 296	69.76497092	-17.61214335	1.00	Depth constraint point
ECS 297	69.75677313	-17.62691543	1.00	Depth constraint point

Submission by the Republic of Mauritius to the Commission on the Limits of the Continental Shelf concerning the Extended Continental Shelf in the region of Rodrigues Island



Point ID	Longitude (decimal deg°)	Latitude (decimal deg°)	Distance (M)	Article 76 criterion
ECS 298	69.74842041	-17.64160783	1.00	Depth constraint point
ECS 299	69.73991355	-17.65621903	1.00	Depth constraint point
ECS 300	69.73125337	-17.67074757	1.00	Depth constraint point
ECS 301	69.72244073	-17.68519198	1.00	Depth constraint point
ECS 302	69.71347647	-17.69955078	1.00	Depth constraint point
ECS 303	69.70436147	-17.71382252	1.00	Depth constraint point
ECS 304	69.69509660	-17.72800576	1.00	Depth constraint point
ECS 305	69.68568279	-17.74209906	1.00	Depth constraint point
ECS 306	69.67612094	-17.75610099	1.00	Depth constraint point
ECS 307	69.67042730	-17.76429451	0.59	Depth constraint point
ECS 308	69.66280414	-17.77510374	0.78	Depth constraint point
ECS 309	69.65289636	-17.78888421	1.00	Depth constraint point
ECS 310	69.64284375	-17.80256857	1.00	Depth constraint point
ECS 311	69.63264730	-17.81615543	1.00	Depth constraint point
ECS 312	69.62230800	-17.82964341	1.00	Depth constraint point
ECS 313	69.61182688	-17.84303113	1.00	Depth constraint point
ECS 314	69.60120497	-17.85631723	1.00	Depth constraint point
ECS 315	69.59282698	-17.86660391	0.78	Depth constraint point
ECS 316	69.58311252	-17.87852943	0.90	Depth constraint point
ECS 317	69.57223263	-17.89162427	1.00	Depth constraint point
ECS 318	69.56121496	-17.90461368	1.00	Depth constraint point
ECS 319	69.55006060	-17.91749634	1.00	Depth constraint point
ECS 320	69.53877065	-17.93027093	1.00	Depth constraint point
ECS 321	69.52734623	-17.94293615	1.00	Depth constraint point
ECS 322	69.51578848	-17.95549072	1.00	Depth constraint point
ECS 323	69.50409855	-17.96793336	1.00	Depth constraint point
ECS 324	69.49227758	-17.98026280	1.00	Depth constraint point
ECS 325	69.48032677	-17.99247777	1.00	Depth constraint point
ECS 326	69.46824730	-18.00457705	1.00	Depth constraint point
ECS 327	69.45604038	-18.01655940	1.00	Depth constraint point
ECS 328	69.44370721	-18.02842358	1.00	Depth constraint point
ECS 329	69.43124904	-18.04016840	1.00	Depth constraint point
ECS 330	69.41866711	-18.05179266	1.00	Depth constraint point
ECS 331	69.41242628	-18.05744336	0.49	Depth constraint point / 350M constraint point
ECS 332	69.41651857	-18.07021869	0.80	350 M constraint point
ECS 333	69.42159405	-18.08623147	1.00	350 M constraint point
ECS 334	69.42662911	-18.10225673	1.00	350 M constraint point
ECS 335	69.43161027	-18.11829554	1.00	350 M constraint point

Submission by the Republic of Mauritius to the Commission on the Limits of the Continental Shelf concerning the Extended Continental Shelf in the region of Rodrigues Island



Point ID	Longitude (decimal deg°)	Latitude (decimal deg°)	Distance (M)	Article 76 criterion
ECS 336	69.43655100	-18.13434789	1.00	350 M constraint point
ECS 337	69.44144233	-18.15041379	1.00	350 M constraint point
ECS 338	69.44628425	-18.16649321	1.00	350 M constraint point
ECS 339	69.45108125	-18.18258509	1.00	350 M constraint point
ECS 340	69.45583334	-18.19868835	1.00	350 M constraint point
ECS 341	69.46053602	-18.21480619	1.00	350 M constraint point
ECS 342	69.46518929	-18.23093755	1.00	350 M constraint point
ECS 343	69.46979765	-18.24708027	1.00	350 M constraint point
ECS 344	69.47436109	-18.26323542	1.00	350 M constraint point
ECS 345	69.47887513	-18.27940299	1.00	350 M constraint point
ECS 346	69.48333975	-18.29558298	1.00	350 M constraint point
ECS 347	69.48618292	-18.30597732	0.64	350 M constraint point
ECS 348	69.48776396	-18.31177325	0.36	350 M constraint point
ECS 349	69.49214774	-18.32797377	1.00	350 M constraint point
ECS 350	69.49648211	-18.34418563	1.00	350 M constraint point
ECS 351	69.50076707	-18.36040988	1.00	350 M constraint point
ECS 352	69.50500712	-18.37664546	1.00	350 M constraint point
ECS 353	69.50920225	-18.39289129	1.00	350 M constraint point
ECS 354	69.51334348	-18.40914949	1.00	350 M constraint point
ECS 355	69.51744429	-18.42541794	1.00	350 M constraint point
ECS 356	69.52149120	-18.44169662	1.00	350 M constraint point
ECS 357	69.52549320	-18.45798659	1.00	350 M constraint point
ECS 358	69.52944579	-18.47428786	1.00	350 M constraint point
ECS 359	69.53334897	-18.49060041	1.00	350 M constraint point
ECS 360	69.53720723	-18.50692318	1.00	350 M constraint point
ECS 361	69.54101609	-18.52325509	1.00	350 M constraint point
ECS 362	69.54478003	-18.53959719	1.00	350 M constraint point
ECS 363	69.54849007	-18.55595057	1.00	350 M constraint point
ECS 364	69.55215520	-18.57231200	1.00	350 M constraint point
ECS 365	69.55577541	-18.58868362	1.00	350 M constraint point
ECS 366	69.55934172	-18.60506650	1.00	350 M constraint point
ECS 367	69.56286311	-18.62145848	1.00	350 M constraint point
ECS 368	69.56633510	-18.63786065	1.00	350 M constraint point
ECS 369	69.56975768	-18.65426977	1.00	350 M constraint point
ECS 370	69.57313535	-18.67069013	1.00	350 M constraint point
ECS 371	69.57646361	-18.68711744	1.00	350 M constraint point
ECS 372	69.57974246	-18.70355598	1.00	350 M constraint point
ECS 373	69.58297190	-18.72000146	1.00	350 M constraint point

Submission by the Republic of Mauritius to the Commission on the Limits of the Continental Shelf concerning the Extended Continental Shelf in the region of Rodrigues Island



Point ID	Longitude (decimal deg°)	Latitude (decimal deg°)	Distance (M)	Article 76 criterion
ECS 374	69.58615194	-18.73645602	1.00	350 M constraint point
ECS 375	69.58928706	-18.75291966	1.00	350 M constraint point
ECS 376	69.59236828	-18.76939023	1.00	350 M constraint point
ECS 377	69.59540459	-18.78586986	1.00	350 M constraint point
ECS 378	69.59839148	-18.80235856	1.00	350 M constraint point
ECS 379	69.60132897	-18.81885418	1.00	350 M constraint point
ECS 380	69.60422155	-18.83535671	1.00	350 M constraint point
ECS 381	69.60706023	-18.85186830	1.00	350 M constraint point
ECS 382	69.60985399	-18.86838679	1.00	350 M constraint point
ECS 383	69.61259385	-18.88491218	1.00	350 M constraint point
ECS 384	69.61528879	-18.90144662	1.00	350 M constraint point
ECS 385	69.61793433	-18.91798581	1.00	350 M constraint point
ECS 386	69.62053046	-18.93453403	1.00	350 M constraint point
ECS 387	69.62307719	-18.95108914	1.00	350 M constraint point
ECS 388	69.62557450	-18.96765113	1.00	350 M constraint point
ECS 389	69.62802690	-18.98422001	1.00	350 M constraint point
ECS 390	69.63042541	-19.00079362	1.00	350 M constraint point
ECS 391	69.63277450	-19.01737411	1.00	350 M constraint point
ECS 392	69.63507868	-19.03396147	1.00	350 M constraint point
ECS 393	69.63732896	-19.05055569	1.00	350 M constraint point
ECS 394	69.63953432	-19.06715465	1.00	350 M constraint point
ECS 395	69.64168579	-19.08376046	1.00	350 M constraint point
ECS 396	69.64379234	-19.10037099	1.00	350 M constraint point
ECS 397	69.64584499	-19.11698837	1.00	350 M constraint point
ECS 398	69.64785272	-19.13361046	1.00	350 M constraint point
ECS 399	69.64981105	-19.15023727	1.00	350 M constraint point
ECS 400	69.65171548	-19.16686878	1.00	350 M constraint point
ECS 401	69.65357499	-19.18350499	1.00	350 M constraint point
ECS 402	69.65538061	-19.20014804	1.00	350 M constraint point
ECS 403	69.65714130	-19.21679366	1.00	350 M constraint point
ECS 404	69.65884810	-19.23344610	1.00	350 M constraint point
ECS 405	69.66050999	-19.25010322	1.00	350 M constraint point
ECS 406	69.66211797	-19.26676504	1.00	350 M constraint point
ECS 407	69.66367655	-19.28342941	1.00	350 M constraint point
ECS 408	69.66519021	-19.30009846	1.00	350 M constraint point
ECS 409	69.66664997	-19.31677219	1.00	350 M constraint point
ECS 410	69.66806033	-19.33344846	1.00	350 M constraint point
ECS 411	69.66942127	-19.35012940	1.00	350 M constraint point

Submission by the Republic of Mauritius to the Commission on the Limits of the Continental Shelf concerning the Extended Continental Shelf in the region of Rodrigues Island





Point ID	Longitude (decimal deg°)	Latitude (decimal deg°)	Distance (M)	Article 76 criterion
ECS 412	69.67073281	-19.36681288	1.00	350 M constraint point
ECS 413	69.67199495	-19.38350102	1.00	350 M constraint point
ECS 414	69.67320767	-19.40019170	1.00	350 M constraint point
ECS 415	69.67437099	-19.41688490	1.00	350 M constraint point
ECS 416	69.67548041	-19.43358277	1.00	350 M constraint point
ECS 417	69.67654491	-19.45028315	1.00	350 M constraint point
ECS 418	69.67755552	-19.46698606	1.00	350 M constraint point
ECS 419	69.67851672	-19.48369148	1.00	350 M constraint point
ECS 420	69.67942851	-19.50039943	1.00	350 M constraint point
ECS 421	69.68029089	-19.51710988	1.00	350 M constraint point
ECS 422	69.68094217	-19.53037989	0.79	350 M constraint point
ECS 423	69.68110836	-19.53382284	0.21	350 M constraint point
ECS 424	69.68188540	-19.55053619	1.00	350 M constraint point
ECS 425	69.68261752	-19.56725204	1.00	350 M constraint point
ECS 426	69.68329575	-19.58397039	1.00	350 M constraint point
ECS 427	69.68392457	-19.60068911	1.00	350 M constraint point
ECS 428	69.68449950	-19.61741034	1.00	350 M constraint point
ECS 429	69.68502950	-19.63413193	1.00	350 M constraint point
ECS 430	69.68551010	-19.65085601	1.00	350 M constraint point
ECS 431	69.68593680	-19.66758046	1.00	350 M constraint point
ECS 432	69.68631409	-19.68430740	1.00	350 M constraint point
ECS 433	69.68664198	-19.70103470	1.00	350 M constraint point
ECS 434	69.68692045	-19.71776235	1.00	350 M constraint point
ECS 435	69.68714503	-19.73449036	1.00	350 M constraint point
ECS 436	69.68732021	-19.75121873	1.00	350 M constraint point
ECS 437	69.68745046	-19.76794744	1.00	350 M constraint point
ECS 438	69.68752682	-19.78467651	1.00	350 M constraint point
ECS 439	69.68754928	-19.80140592	1.00	350 M constraint point
ECS 440	69.68752682	-19.81813568	1.00	350 M constraint point
ECS 441	69.68745046	-19.83486578	1.00	350 M constraint point
ECS 442	69.68732470	-19.85159410	1.00	350 M constraint point
ECS 443	69.68714953	-19.86832276	1.00	350 M constraint point
ECS 444	69.68692495	-19.88505176	1.00	350 M constraint point
ECS 445	69.68665096	-19.90177898	1.00	350 M constraint point
ECS 446	69.68632308	-19.91850652	1.00	350 M constraint point
ECS 447	69.68601669	-19.93208901	0.81	350 M constraint point / 60 M distance criterion
ECS 448	69.67517168	-19.94272427	0.88	60 M distance criterion
ECS 449	69.66267956	-19.95457061	1.00	60 M distance criterion

Submission by the Republic of Mauritius to the Commission on the Limits of the Continental Shelf concerning the Extended Continental Shelf in the region of Rodrigues Island



Point ID	Longitude (decimal deg°)	Latitude (decimal deg°)	Distance (M)	Article 76 criterion
ECS 450	69.64997853	-19.96621753	1.00	60 M distance criterion
ECS 451	69.63707213	-19.97766177	1.00	60 M distance criterion
ECS 452	69.62396396	-19.98890010	1.00	60 M distance criterion
ECS 453	69.61065765	-19.99992935	1.00	60 M distance criterion
ECS 454	69.59715691	-20.01074642	1.00	60 M distance criterion
ECS 455	69.58346551	-20.02134827	1.00	60 M distance criterion
ECS 456	69.56958727	-20.03173189	1.00	60 M distance criterion
ECS 457	69.55552606	-20.04189437	1.00	60 M distance criterion
ECS 458	69.54128580	-20.05183284	1.00	60 M distance criterion
ECS 459	69.52687049	-20.06154449	1.00	60 M distance criterion
ECS 460	69.51228416	-20.07102660	1.00	60 M distance criterion
ECS 461	69.49753088	-20.08027648	1.00	60 M distance criterion
ECS 462	69.48261480	-20.08929152	1.00	60 M distance criterion
ECS 463	69.46754008	-20.09806919	1.00	60 M distance criterion
ECS 464	69.45231097	-20.10660699	1.00	60 M distance criterion
ECS 465	69.43693173	-20.11490253	1.00	60 M distance criterion
ECS 466	69.42140669	-20.12295346	1.00	60 M distance criterion
ECS 467	69.40574019	-20.13075751	1.00	60 M distance criterion
ECS 468	69.38993666	-20.13831247	1.00	60 M distance criterion
ECS 469	69.37400053	-20.14561621	1.00	60 M distance criterion
ECS 470	69.35793628	-20.15266666	1.00	60 M distance criterion
ECS 471	69.34174844	-20.15946184	1.00	60 M distance criterion
ECS 472	69.32544157	-20.16599982	1.00	60 M distance criterion
ECS 473	69.30902025	-20.17227876	1.00	60 M distance criterion
ECS 474	69.29248913	-20.17829687	1.00	60 M distance criterion
ECS 475	69.27585285	-20.18405247	1.00	60 M distance criterion
ECS 476	69.25911612	-20.18954391	1.00	60 M distance criterion
ECS 477	69.24228365	-20.19476966	1.00	60 M distance criterion
ECS 478	69.22536019	-20.19972822	1.00	60 M distance criterion
ECS 479	69.20835053	-20.20441821	1.00	60 M distance criterion
ECS 480	69.19125946	-20.20883828	1.00	60 M distance criterion
ECS 481	69.17409181	-20.21298720	1.00	60 M distance criterion
ECS 482	69.15685244	-20.21686378	1.00	60 M distance criterion
ECS 483	69.13954622	-20.22046693	1.00	60 M distance criterion
ECS 484	69.12217804	-20.22379564	1.00	60 M distance criterion
ECS 485	69.10475281	-20.22684895	1.00	60 M distance criterion
ECS 486	69.08727545	-20.22962601	1.00	60 M distance criterion
ECS 487	69.06975092	-20.23212603	1.00	60 M distance criterion

Submission by the Republic of Mauritius to the Commission on the Limits of the Continental Shelf concerning the Extended Continental Shelf in the region of Rodrigues Island



Point ID	Longitude (decimal deg°)	Latitude (decimal deg°)	Distance (M)	Article 76 criterion
ECS 488	69.05218417	-20.23434829	1.00	60 M distance criterion
ECS 489	69.03458017	-20.23629219	1.00	60 M distance criterion
ECS 490	69.01694391	-20.23795715	1.00	60 M distance criterion
ECS 491	68.99928036	-20.23934271	1.00	60 M distance criterion
ECS 492	68.98159454	-20.24044849	1.00	60 M distance criterion
ECS 493	68.96389145	-20.24127415	1.00	60 M distance criterion
ECS 494	68.94617610	-20.24181948	1.00	60 M distance criterion
ECS 495	68.92845350	-20.24208432	1.00	60 M distance criterion
ECS 496	68.91072868	-20.24206859	1.00	60 M distance criterion
ECS 497	67.86606707	-20.43032134	59.97	60 M distance criterion
ECS 498	67.86230672	-20.43169866	0.23	60 M distance criterion
ECS 499	67.84565936	-20.43749511	1.00	60 M distance criterion
ECS 500	67.82891063	-20.44302765	1.00	60 M distance criterion
ECS 501	67.81206525	-20.44829471	1.00	60 M distance criterion
ECS 502	67.79512798	-20.45329480	1.00	60 M distance criterion
ECS 503	67.77810360	-20.45802650	1.00	60 M distance criterion
ECS 504	67.76099692	-20.46248849	1.00	60 M distance criterion
ECS 505	67.74381278	-20.46667949	1.00	60 M distance criterion
ECS 506	67.72655602	-20.47059832	1.00	60 M distance criterion
ECS 507	67.70923153	-20.47424387	1.00	60 M distance criterion
ECS 508	67.69184420	-20.47761510	1.00	60 M distance criterion
ECS 509	67.67439896	-20.48071108	1.00	60 M distance criterion
ECS 510	67.65690074	-20.48353091	1.00	60 M distance criterion
ECS 511	67.63935448	-20.48607380	1.00	60 M distance criterion
ECS 512	67.62176516	-20.48833903	1.00	60 M distance criterion
ECS 513	67.60413776	-20.49032596	1.00	60 M distance criterion
ECS 514	67.58647725	-20.49203402	1.00	60 M distance criterion
ECS 515	67.56878864	-20.49346274	1.00	60 M distance criterion
ECS 516	67.55107695	-20.49461170	1.00	60 M distance criterion
ECS 517	67.53334717	-20.49548059	1.00	60 M distance criterion
ECS 518	67.51560434	-20.49606916	1.00	60 M distance criterion
ECS 519	67.49785348	-20.49637723	1.00	60 M distance criterion
ECS 520	67.48009961	-20.49640473	1.00	60 M distance criterion
ECS 521	67.46234776	-20.49615164	1.00	60 M distance criterion
ECS 522	67.44460296	-20.49561804	1.00	60 M distance criterion
ECS 523	67.42687023	-20.49480407	1.00	60 M distance criterion
ECS 524	67.40915459	-20.49370997	1.00	60 M distance criterion
ECS 525	67.39146107	-20.49233606	1.00	60 M distance criterion

Submission by the Republic of Mauritius to the Commission on the Limits of the Continental Shelf concerning the Extended Continental Shelf in the region of Rodrigues Island





Point ID	Longitude (decimal deg°)	Latitude (decimal deg°)	Distance (M)	Article 76 criterion
ECS 526	67.37379466	-20.49068270	1.00	60 M distance criterion
ECS 527	67.35616037	-20.48875039	1.00	60 M distance criterion
ECS 528	67.33856319	-20.48653965	1.00	60 M distance criterion
ECS 529	67.32100811	-20.48405113	1.00	60 M distance criterion
ECS 530	67.30350008	-20.48128551	1.00	60 M distance criterion
ECS 531	67.28604407	-20.47824359	1.00	60 M distance criterion
ECS 532	67.26864500	-20.47492623	1.00	60 M distance criterion
ECS 533	67.25130781	-20.47133436	1.00	60 M distance criterion
ECS 534	67.23403739	-20.46746901	1.00	60 M distance criterion
ECS 535	67.21683863	-20.46333126	1.00	60 M distance criterion
ECS 536	67.19971639	-20.45892229	1.00	60 M distance criterion
ECS 537	67.18267550	-20.45424334	1.00	60 M distance criterion
ECS 538	67.16572078	-20.44929574	1.00	60 M distance criterion
ECS 539	67.14885701	-20.44408089	1.00	60 M distance criterion
ECS 540	67.13208897	-20.43860026	1.00	60 M distance criterion
ECS 541	67.11542137	-20.43285541	1.00	60 M distance criterion
ECS 542	67.09885893	-20.42684795	1.00	60 M distance criterion
ECS 543	67.08240631	-20.42057959	1.00	60 M distance criterion
ECS 544	67.06606815	-20.41405210	1.00	60 M distance criterion
ECS 545	67.04984905	-20.40726733	1.00	60 M distance criterion
ECS 546	67.03375359	-20.40022718	1.00	60 M distance criterion
ECS 547	67.01778629	-20.39293366	1.00	60 M distance criterion
ECS 548	67.00195165	-20.38538882	1.00	60 M distance criterion
ECS 549	66.98625412	-20.37759480	1.00	60 M distance criterion
ECS 550	66.97382037	-20.37116789	0.80	60 M distance criterion chord / Baseline +200M



## MRS-ES-ANNEX 2\_R2

**Table listing the fixed points defining the outer limits of the extended continental shelf in the region of Rodrigues Island (Degrees, Minutes, Seconds)**

Point ID	Latitude (deg min sec S)	Longitude (deg min sec E)	Distance (M)	Article 76 criterion
ECS 1	16° 54' 16.1"	65° 27' 16.4"	0.00	60 M distance criterion chord / Baseline +200M
ECS 2	16° 54' 11.7"	65° 27' 18.8"	0.08	60 M distance criterion
ECS 3	16° 53' 18.6"	65° 27' 48.3"	1.00	60 M distance criterion
ECS 4	16° 52' 26.0"	65° 28' 18.8"	1.00	60 M distance criterion
ECS 5	16° 51' 33.8"	65° 28' 50.1"	1.00	60 M distance criterion
ECS 6	16° 50' 42.2"	65° 29' 22.4"	1.00	60 M distance criterion
ECS 7	16° 49' 51.1"	65° 29' 55.5"	1.00	60 M distance criterion
ECS 8	16° 49' 0.5"	65° 30' 29.5"	1.00	60 M distance criterion
ECS 9	16° 48' 10.5"	65° 31' 4.4"	1.00	60 M distance criterion
ECS 10	16° 47' 21.1"	65° 31' 40.1"	1.00	60 M distance criterion
ECS 11	16° 46' 32.2"	65° 32' 16.7"	1.00	60 M distance criterion
ECS 12	16° 45' 43.9"	65° 32' 54.1"	1.00	60 M distance criterion
ECS 13	16° 44' 56.3"	65° 33' 32.3"	1.00	60 M distance criterion
ECS 14	16° 44' 9.2"	65° 34' 11.4"	1.00	60 M distance criterion
ECS 15	16° 43' 22.8"	65° 34' 51.2"	1.00	60 M distance criterion
ECS 16	16° 42' 37.0"	65° 35' 31.9"	1.00	60 M distance criterion
ECS 17	16° 41' 51.9"	65° 36' 13.3"	1.00	60 M distance criterion
ECS 18	16° 41' 7.4"	65° 36' 55.5"	1.00	60 M distance criterion
ECS 19	16° 40' 23.7"	65° 37' 38.4"	1.00	60 M distance criterion
ECS 20	16° 39' 40.6"	65° 38' 22.1"	1.00	60 M distance criterion
ECS 21	16° 38' 58.2"	65° 39' 6.6"	1.00	60 M distance criterion
ECS 22	16° 38' 16.5"	65° 39' 51.7"	1.00	60 M distance criterion
ECS 23	16° 37' 35.6"	65° 40' 37.6"	1.00	60 M distance criterion
ECS 24	16° 36' 55.4"	65° 41' 24.1"	1.00	60 M distance criterion
ECS 25	16° 36' 16.0"	65° 42' 11.4"	1.00	60 M distance criterion
ECS 26	16° 35' 37.3"	65° 42' 59.3"	1.00	60 M distance criterion
ECS 27	16° 34' 59.4"	65° 43' 47.8"	1.00	60 M distance criterion
ECS 28	16° 34' 22.3"	65° 44' 37.0"	1.00	60 M distance criterion
ECS 29	16° 33' 46.0"	65° 45' 26.9"	1.00	60 M distance criterion
ECS 30	16° 33' 10.4"	65° 46' 17.3"	1.00	60 M distance criterion
ECS 31	16° 32' 35.7"	65° 47' 8.4"	1.00	60 M distance criterion
ECS 32	16° 32' 1.8"	65° 48' 0.0"	1.00	60 M distance criterion
ECS 33	16° 31' 28.8"	65° 48' 52.2"	1.00	60 M distance criterion

Submission by the Republic of Mauritius to the Commission on the Limits of the Continental Shelf concerning the Extended Continental Shelf in the region of Rodrigues Island



Point ID	Latitude (deg min sec S)	Longitude (deg min sec E)	Distance (M)	Article 76 criterion
ECS 34	16° 30' 56.6"	65° 49' 45.0"	1.00	60 M distance criterion
ECS 35	16° 30' 25.2"	65° 50' 38.3"	1.00	60 M distance criterion
ECS 36	16° 23' 56.0"	66° 1' 46.1"	12.50	60 M distance criterion
ECS 37	15° 50' 45.3"	66° 51' 50.4"	58.44	60 M distance criterion
ECS 38	15° 50' 11.3"	66° 52' 41.8"	1.00	60 M distance criterion
ECS 39	15° 49' 38.1"	66° 53' 33.8"	1.00	60 M distance criterion
ECS 40	15° 49' 5.8"	66° 54' 26.3"	1.00	60 M distance criterion
ECS 41	15° 48' 34.4"	66° 55' 19.4"	1.00	60 M distance criterion
ECS 42	15° 48' 3.8"	66° 56' 13.0"	1.00	60 M distance criterion
ECS 43	15° 47' 34.0"	66° 57' 7.1"	1.00	60 M distance criterion
ECS 44	15° 47' 5.2"	66° 58' 1.7"	1.00	60 M distance criterion
ECS 45	15° 46' 37.2"	66° 58' 56.8"	1.00	60 M distance criterion
ECS 46	15° 46' 10.1"	66° 59' 52.4"	1.00	60 M distance criterion
ECS 47	15° 45' 43.9"	67° 0' 48.4"	1.00	60 M distance criterion
ECS 48	15° 45' 18.6"	67° 1' 44.9"	1.00	60 M distance criterion
ECS 49	15° 44' 54.2"	67° 2' 41.8"	1.00	60 M distance criterion
ECS 50	15° 44' 30.7"	67° 3' 39.1"	1.00	60 M distance criterion
ECS 51	15° 44' 8.2"	67° 4' 36.8"	1.00	60 M distance criterion
ECS 52	15° 43' 46.6"	67° 5' 34.9"	1.00	60 M distance criterion
ECS 53	15° 43' 25.9"	67° 6' 33.3"	1.00	60 M distance criterion
ECS 54	15° 43' 6.2"	67° 7' 32.1"	1.00	60 M distance criterion
ECS 55	15° 42' 47.4"	67° 8' 31.2"	1.00	60 M distance criterion
ECS 56	15° 42' 29.5"	67° 9' 30.6"	1.00	60 M distance criterion
ECS 57	15° 42' 12.7"	67° 10' 30.3"	1.00	60 M distance criterion
ECS 58	15° 41' 56.7"	67° 11' 30.3"	1.00	60 M distance criterion
ECS 59	15° 41' 41.8"	67° 12' 30.5"	1.00	60 M distance criterion
ECS 60	15° 41' 27.8"	67° 13' 31.0"	1.00	60 M distance criterion
ECS 61	15° 41' 14.8"	67° 14' 31.7"	1.00	60 M distance criterion
ECS 62	15° 41' 2.8"	67° 15' 32.7"	1.00	60 M distance criterion
ECS 63	15° 40' 51.7"	67° 16' 33.8"	1.00	60 M distance criterion
ECS 64	15° 40' 41.7"	67° 17' 35.1"	1.00	60 M distance criterion
ECS 65	15° 40' 32.6"	67° 18' 36.6"	1.00	60 M distance criterion
ECS 66	15° 40' 24.5"	67° 19' 38.3"	1.00	60 M distance criterion
ECS 67	15° 40' 17.4"	67° 20' 40.0"	1.00	60 M distance criterion
ECS 68	15° 40' 11.3"	67° 21' 41.9"	1.00	60 M distance criterion
ECS 69	15° 40' 6.2"	67° 22' 43.8"	1.00	60 M distance criterion
ECS 70	15° 40' 2.1"	67° 23' 45.9"	1.00	60 M distance criterion
ECS 71	15° 39' 58.9"	67° 24' 48.0"	1.00	60 M distance criterion

Submission by the Republic of Mauritius to the Commission on the Limits of the Continental Shelf concerning the Extended Continental Shelf in the region of Rodrigues Island



Point ID	Latitude (deg min sec S)	Longitude (deg min sec E)	Distance (M)	Article 76 criterion
ECS 72	15° 39' 56.8"	67° 25' 50.1"	1.00	60 M distance criterion
ECS 73	15° 7' 0.6"	68° 4' 22.3"	49.62	60 M chord / Depth constraint point
ECS 74	15° 6' 59.5"	68° 4' 34.6"	0.20	Depth constraint point
ECS 75	15° 6' 54.8"	68° 5' 36.5"	1.00	Depth constraint point
ECS 76	15° 6' 50.7"	68° 6' 38.3"	1.00	Depth constraint point
ECS 77	15° 6' 47.2"	68° 7' 40.3"	1.00	Depth constraint point
ECS 78	15° 6' 44.2"	68° 8' 42.2"	1.00	Depth constraint point
ECS 79	15° 6' 41.9"	68° 9' 44.2"	1.00	Depth constraint point
ECS 80	15° 6' 40.2"	68° 10' 46.2"	1.00	Depth constraint point
ECS 81	15° 6' 39.1"	68° 11' 48.2"	1.00	Depth constraint point
ECS 82	15° 6' 38.5"	68° 12' 50.2"	1.00	Depth constraint point
ECS 83	15° 6' 38.6"	68° 13' 52.2"	1.00	Depth constraint point
ECS 84	15° 6' 39.2"	68° 14' 54.3"	1.00	Depth constraint point
ECS 85	15° 6' 40.5"	68° 15' 56.3"	1.00	Depth constraint point
ECS 86	15° 6' 42.4"	68° 16' 58.3"	1.00	Depth constraint point
ECS 87	15° 6' 44.8"	68° 18' 0.2"	1.00	Depth constraint point
ECS 88	15° 6' 47.9"	68° 19' 2.2"	1.00	Depth constraint point
ECS 89	15° 6' 51.5"	68° 20' 4.1"	1.00	Depth constraint point
ECS 90	15° 6' 55.7"	68° 21' 6.0"	1.00	Depth constraint point
ECS 91	15° 7' 0.6"	68° 22' 7.8"	1.00	Depth constraint point
ECS 92	15° 7' 6.0"	68° 23' 9.6"	1.00	Depth constraint point
ECS 93	15° 7' 12.0"	68° 24' 11.3"	1.00	Depth constraint point
ECS 94	15° 7' 18.7"	68° 25' 12.9"	1.00	Depth constraint point
ECS 95	15° 7' 25.9"	68° 26' 14.5"	1.00	Depth constraint point
ECS 96	15° 7' 33.7"	68° 27' 16.0"	1.00	Depth constraint point
ECS 97	15° 7' 42.1"	68° 28' 17.4"	1.00	Depth constraint point
ECS 98	15° 7' 51.1"	68° 29' 18.8"	1.00	Depth constraint point
ECS 99	15° 8' 0.7"	68° 30' 20.0"	1.00	Depth constraint point
ECS 100	15° 8' 10.8"	68° 31' 21.1"	1.00	Depth constraint point
ECS 101	15° 8' 21.6"	68° 32' 22.2"	1.00	Depth constraint point
ECS 102	15° 8' 32.9"	68° 33' 23.1"	1.00	Depth constraint point
ECS 103	15° 8' 44.9"	68° 34' 23.9"	1.00	Depth constraint point
ECS 104	15° 8' 57.4"	68° 35' 24.6"	1.00	Depth constraint point
ECS 105	15° 9' 10.5"	68° 36' 25.1"	1.00	Depth constraint point
ECS 106	15° 9' 24.2"	68° 37' 25.5"	1.00	Depth constraint point
ECS 107	15° 9' 38.5"	68° 38' 25.8"	1.00	Depth constraint point
ECS 108	15° 9' 53.3"	68° 39' 25.9"	1.00	Depth constraint point
ECS 109	15° 10' 8.7"	68° 40' 25.9"	1.00	Depth constraint point

Submission by the Republic of Mauritius to the Commission on the Limits of the Continental Shelf concerning the Extended Continental Shelf in the region of Rodrigues Island



Point ID	Latitude (deg min sec S)	Longitude (deg min sec E)	Distance (M)	Article 76 criterion
ECS 110	15° 10' 24.7"	68° 41' 25.7"	1.00	Depth constraint point
ECS 111	15° 10' 41.3"	68° 42' 25.4"	1.00	Depth constraint point
ECS 112	15° 10' 58.5"	68° 43' 24.9"	1.00	Depth constraint point
ECS 113	15° 11' 16.2"	68° 44' 24.2"	1.00	Depth constraint point
ECS 114	15° 11' 34.5"	68° 45' 23.3"	1.00	Depth constraint point
ECS 115	15° 11' 53.4"	68° 46' 22.2"	1.00	Depth constraint point
ECS 116	15° 12' 12.8"	68° 47' 20.9"	1.00	Depth constraint point
ECS 117	15° 12' 32.8"	68° 48' 19.5"	1.00	Depth constraint point
ECS 118	15° 12' 53.4"	68° 49' 17.8"	1.00	Depth constraint point
ECS 119	15° 13' 14.5"	68° 50' 15.9"	1.00	Depth constraint point
ECS 120	15° 13' 36.2"	68° 51' 13.8"	1.00	Depth constraint point
ECS 121	15° 13' 58.4"	68° 52' 11.5"	1.00	Depth constraint point
ECS 122	15° 14' 21.2"	68° 53' 8.9"	1.00	Depth constraint point
ECS 123	15° 14' 44.5"	68° 54' 6.2"	1.00	Depth constraint point
ECS 124	15° 15' 8.4"	68° 55' 3.1"	1.00	Depth constraint point
ECS 125	15° 15' 32.9"	68° 55' 59.9"	1.00	Depth constraint point
ECS 126	15° 15' 57.9"	68° 56' 56.3"	1.00	Depth constraint point
ECS 127	15° 16' 23.4"	68° 57' 52.6"	1.00	Depth constraint point
ECS 128	15° 16' 49.5"	68° 58' 48.5"	1.00	Depth constraint point
ECS 129	15° 17' 16.1"	68° 59' 44.2"	1.00	Depth constraint point
ECS 130	15° 17' 43.2"	69° 0' 39.6"	1.00	Depth constraint point
ECS 131	15° 18' 10.9"	69° 1' 34.8"	1.00	Depth constraint point
ECS 132	15° 18' 39.1"	69° 2' 29.6"	1.00	Depth constraint point
ECS 133	15° 19' 7.8"	69° 3' 24.2"	1.00	Depth constraint point
ECS 134	15° 19' 37.1"	69° 4' 18.5"	1.00	Depth constraint point
ECS 135	15° 20' 6.9"	69° 5' 12.4"	1.00	Depth constraint point
ECS 136	15° 20' 37.2"	69° 6' 6.1"	1.00	Depth constraint point
ECS 137	15° 21' 8.0"	69° 6' 59.5"	1.00	Depth constraint point
ECS 138	15° 21' 39.3"	69° 7' 52.5"	1.00	Depth constraint point
ECS 139	15° 22' 11.2"	69° 8' 45.2"	1.00	Depth constraint point
ECS 140	15° 22' 43.5"	69° 9' 37.6"	1.00	Depth constraint point
ECS 141	15° 23' 16.3"	69° 10' 29.7"	1.00	Depth constraint point
ECS 142	15° 23' 49.7"	69° 11' 21.4"	1.00	Depth constraint point
ECS 143	15° 24' 23.5"	69° 12' 12.8"	1.00	Depth constraint point
ECS 144	15° 24' 57.9"	69° 13' 3.9"	1.00	Depth constraint point
ECS 145	15° 25' 32.7"	69° 13' 54.5"	1.00	Depth constraint point
ECS 146	15° 26' 8.0"	69° 14' 44.9"	1.00	Depth constraint point
ECS 147	15° 26' 43.8"	69° 15' 34.8"	1.00	Depth constraint point

Submission by the Republic of Mauritius to the Commission on the Limits of the Continental Shelf concerning the Extended Continental Shelf in the region of Rodrigues Island



Point ID	Latitude (deg min sec S)	Longitude (deg min sec E)	Distance (M)	Article 76 criterion
ECS 148	15° 27' 20.1"	69° 16' 24.5"	1.00	Depth constraint point
ECS 149	15° 27' 56.8"	69° 17' 13.7"	1.00	Depth constraint point
ECS 150	15° 28' 34.0"	69° 18' 2.5"	1.00	Depth constraint point
ECS 151	15° 29' 11.7"	69° 18' 51.0"	1.00	Depth constraint point
ECS 152	15° 29' 49.9"	69° 19' 39.1"	1.00	Depth constraint point
ECS 153	15° 30' 28.5"	69° 20' 26.8"	1.00	Depth constraint point
ECS 154	15° 31' 7.6"	69° 21' 14.1"	1.00	Depth constraint point
ECS 155	15° 31' 47.1"	69° 22' 1.0"	1.00	Depth constraint point
ECS 156	15° 32' 27.1"	69° 22' 47.5"	1.00	Depth constraint point
ECS 157	15° 33' 7.5"	69° 23' 33.6"	1.00	Depth constraint point
ECS 158	15° 33' 48.4"	69° 24' 19.3"	1.00	Depth constraint point
ECS 159	15° 34' 29.7"	69° 25' 4.5"	1.00	Depth constraint point
ECS 160	15° 35' 11.4"	69° 25' 49.3"	1.00	Depth constraint point
ECS 161	15° 35' 53.6"	69° 26' 33.7"	1.00	Depth constraint point
ECS 162	15° 36' 29.4"	69° 27' 10.8"	0.84	Depth constraint point
ECS 163	15° 36' 56.6"	69° 27' 38.6"	0.63	Depth constraint point
ECS 164	15° 37' 39.8"	69° 28' 21.9"	1.00	Depth constraint point
ECS 165	15° 38' 7.4"	69° 28' 49.2"	0.63	Depth constraint point
ECS 166	15° 38' 42.4"	69° 29' 23.6"	0.80	Depth constraint point
ECS 167	15° 39' 26.5"	69° 30' 6.0"	1.00	Depth constraint point
ECS 168	15° 40' 10.9"	69° 30' 48.0"	1.00	Depth constraint point
ECS 169	15° 40' 55.8"	69° 31' 29.5"	1.00	Depth constraint point
ECS 170	15° 41' 41.0"	69° 32' 10.6"	1.00	Depth constraint point
ECS 171	15° 42' 26.7"	69° 32' 51.2"	1.00	Depth constraint point
ECS 172	15° 43' 12.7"	69° 33' 31.3"	1.00	Depth constraint point
ECS 173	15° 43' 59.1"	69° 34' 11.0"	1.00	Depth constraint point
ECS 174	15° 44' 45.9"	69° 34' 50.2"	1.00	Depth constraint point
ECS 175	15° 45' 33.1"	69° 35' 28.9"	1.00	Depth constraint point
ECS 176	15° 46' 20.6"	69° 36' 7.1"	1.00	Depth constraint point
ECS 177	15° 47' 8.5"	69° 36' 44.8"	1.00	Depth constraint point
ECS 178	15° 47' 56.8"	69° 37' 22.1"	1.00	Depth constraint point
ECS 179	15° 48' 45.4"	69° 37' 58.8"	1.00	Depth constraint point
ECS 180	15° 49' 34.4"	69° 38' 35.1"	1.00	Depth constraint point
ECS 181	15° 50' 23.7"	69° 39' 10.8"	1.00	Depth constraint point
ECS 182	15° 51' 13.4"	69° 39' 46.0"	1.00	Depth constraint point
ECS 183	15° 52' 3.4"	69° 40' 20.8"	1.00	Depth constraint point
ECS 184	15° 52' 53.7"	69° 40' 55.0"	1.00	Depth constraint point
ECS 185	15° 53' 44.4"	69° 41' 28.7"	1.00	Depth constraint point

Submission by the Republic of Mauritius to the Commission on the Limits of the Continental Shelf concerning the Extended Continental Shelf in the region of Rodrigues Island





Point ID	Latitude (deg min sec S)	Longitude (deg min sec E)	Distance (M)	Article 76 criterion
ECS 186	15° 54' 35.4"	69° 42' 1.9"	1.00	Depth constraint point
ECS 187	15° 55' 26.7"	69° 42' 34.5"	1.00	Depth constraint point
ECS 188	15° 56' 18.3"	69° 43' 6.6"	1.00	Depth constraint point
ECS 189	15° 57' 10.2"	69° 43' 38.2"	1.00	Depth constraint point
ECS 190	15° 58' 2.4"	69° 44' 9.3"	1.00	Depth constraint point
ECS 191	15° 58' 54.9"	69° 44' 39.8"	1.00	Depth constraint point
ECS 192	15° 59' 47.7"	69° 45' 9.8"	1.00	Depth constraint point
ECS 193	16° 0' 40.8"	69° 45' 39.3"	1.00	Depth constraint point
ECS 194	16° 1' 34.2"	69° 46' 8.2"	1.00	Depth constraint point
ECS 195	16° 2' 27.8"	69° 46' 36.5"	1.00	Depth constraint point
ECS 196	16° 3' 21.8"	69° 47' 4.3"	1.00	Depth constraint point
ECS 197	16° 4' 16.0"	69° 47' 31.6"	1.00	Depth constraint point
ECS 198	16° 5' 10.4"	69° 47' 58.2"	1.00	Depth constraint point
ECS 199	16° 6' 5.1"	69° 48' 24.4"	1.00	Depth constraint point
ECS 200	16° 7' 0.0"	69° 48' 49.9"	1.00	Depth constraint point
ECS 201	16° 7' 55.2"	69° 49' 14.9"	1.00	Depth constraint point
ECS 202	16° 8' 50.7"	69° 49' 39.4"	1.00	Depth constraint point
ECS 203	16° 9' 46.3"	69° 50' 3.2"	1.00	Depth constraint point
ECS 204	16° 10' 42.2"	69° 50' 26.5"	1.00	Depth constraint point
ECS 205	16° 11' 27.2"	69° 50' 44.7"	0.80	Depth constraint point
ECS 206	16° 12' 19.5"	69° 51' 6.1"	0.93	Depth constraint point
ECS 207	16° 13' 15.8"	69° 51' 28.4"	1.00	Depth constraint point
ECS 208	16° 14' 8.6"	69° 51' 48.8"	0.93	Depth constraint point
ECS 209	16° 14' 47.1"	69° 52' 3.2"	0.68	Depth constraint point
ECS 210	16° 15' 43.9"	69° 52' 24.0"	1.00	Depth constraint point
ECS 211	16° 16' 40.9"	69° 52' 44.2"	1.00	Depth constraint point
ECS 212	16° 17' 38.1"	69° 53' 3.9"	1.00	Depth constraint point
ECS 213	16° 18' 35.5"	69° 53' 22.9"	1.00	Depth constraint point
ECS 214	16° 19' 33.0"	69° 53' 41.3"	1.00	Depth constraint point
ECS 215	16° 20' 30.8"	69° 53' 59.2"	1.00	Depth constraint point
ECS 216	16° 21' 28.7"	69° 54' 16.4"	1.00	Depth constraint point
ECS 217	16° 22' 26.7"	69° 54' 33.1"	1.00	Depth constraint point
ECS 218	16° 23' 24.9"	69° 54' 49.2"	1.00	Depth constraint point
ECS 219	16° 24' 23.3"	69° 55' 4.6"	1.00	Depth constraint point
ECS 220	16° 25' 3.1"	69° 55' 14.8"	0.68	Depth constraint point
ECS 221	16° 25' 46.5"	69° 55' 25.5"	0.74	Depth constraint point
ECS 222	16° 26' 45.2"	69° 55' 39.5"	1.00	Depth constraint point
ECS 223	16° 27' 44.0"	69° 55' 52.9"	1.00	Depth constraint point

Submission by the Republic of Mauritius to the Commission on the Limits of the Continental Shelf concerning the Extended Continental Shelf in the region of Rodrigues Island





Point ID	Latitude (deg min sec S)	Longitude (deg min sec E)	Distance (M)	Article 76 criterion
ECS 224	16° 28' 43.0"	69° 56' 5.7"	1.00	Depth constraint point
ECS 225	16° 29' 42.1"	69° 56' 17.8"	1.00	Depth constraint point
ECS 226	16° 30' 41.3"	69° 56' 29.4"	1.00	Depth constraint point
ECS 227	16° 31' 40.6"	69° 56' 40.3"	1.00	Depth constraint point
ECS 228	16° 32' 40.0"	69° 56' 50.7"	1.00	Depth constraint point
ECS 229	16° 33' 39.5"	69° 57' 0.4"	1.00	Depth constraint point
ECS 230	16° 34' 39.2"	69° 57' 9.5"	1.00	Depth constraint point
ECS 231	16° 35' 38.8"	69° 57' 18.0"	1.00	Depth constraint point
ECS 232	16° 36' 38.6"	69° 57' 25.8"	1.00	Depth constraint point
ECS 233	16° 37' 38.4"	69° 57' 33.1"	1.00	Depth constraint point
ECS 234	16° 38' 38.4"	69° 57' 39.7"	1.00	Depth constraint point
ECS 235	16° 39' 38.3"	69° 57' 45.7"	1.00	Depth constraint point
ECS 236	16° 40' 38.3"	69° 57' 51.1"	1.00	Depth constraint point
ECS 237	16° 41' 22.8"	69° 57' 54.7"	0.74	Depth constraint point
ECS 238	16° 42' 15.7"	69° 57' 58.5"	0.88	Depth constraint point
ECS 239	16° 43' 15.8"	69° 58' 2.3"	1.00	Depth constraint point
ECS 240	16° 44' 16.0"	69° 58' 5.4"	1.00	Depth constraint point
ECS 241	16° 45' 16.2"	69° 58' 7.9"	1.00	Depth constraint point
ECS 242	16° 46' 16.4"	69° 58' 9.8"	1.00	Depth constraint point
ECS 243	16° 47' 16.7"	69° 58' 11.1"	1.00	Depth constraint point
ECS 244	16° 48' 16.9"	69° 58' 11.7"	1.00	Depth constraint point
ECS 245	16° 49' 17.1"	69° 58' 11.7"	1.00	Depth constraint point
ECS 246	16° 50' 17.4"	69° 58' 11.1"	1.00	Depth constraint point
ECS 247	16° 51' 17.6"	69° 58' 9.9"	1.00	Depth constraint point
ECS 248	16° 52' 17.8"	69° 58' 8.0"	1.00	Depth constraint point
ECS 249	16° 53' 18.0"	69° 58' 5.5"	1.00	Depth constraint point
ECS 250	16° 54' 18.2"	69° 58' 2.4"	1.00	Depth constraint point
ECS 251	16° 55' 18.3"	69° 57' 58.6"	1.00	Depth constraint point
ECS 252	16° 56' 11.2"	69° 57' 54.8"	0.88	Depth constraint point
ECS 253	16° 57' 4.6"	69° 57' 50.5"	0.89	Depth constraint point
ECS 254	16° 58' 4.6"	69° 57' 45.1"	1.00	Depth constraint point
ECS 255	16° 59' 4.5"	69° 57' 39.0"	1.00	Depth constraint point
ECS 256	17° 0' 4.4"	69° 57' 32.3"	1.00	Depth constraint point
ECS 257	17° 0' 57.6"	69° 57' 25.8"	0.89	Depth constraint point
ECS 258	17° 1' 41.6"	69° 57' 20.1"	0.74	Depth constraint point
ECS 259	17° 2' 41.4"	69° 57' 11.7"	1.00	Depth constraint point
ECS 260	17° 3' 41.0"	69° 57' 2.8"	1.00	Depth constraint point
ECS 261	17° 4' 40.5"	69° 56' 53.2"	1.00	Depth constraint point

Submission by the Republic of Mauritius to the Commission on the Limits of the Continental Shelf concerning the Extended Continental Shelf in the region of Rodrigues Island



Point ID	Latitude (deg min sec S)	Longitude (deg min sec E)	Distance (M)	Article 76 criterion
ECS 262	17° 5' 40.0"	69° 56' 43.0"	1.00	Depth constraint point
ECS 263	17° 6' 23.7"	69° 56' 35.1"	0.74	Depth constraint point
ECS 264	17° 7' 6.3"	69° 56' 27.4"	0.72	Depth constraint point
ECS 265	17° 8' 5.5"	69° 56' 16.1"	1.00	Depth constraint point
ECS 266	17° 9' 4.7"	69° 56' 4.2"	1.00	Depth constraint point
ECS 267	17° 10' 3.7"	69° 55' 51.7"	1.00	Depth constraint point
ECS 268	17° 11' 2.6"	69° 55' 38.5"	1.00	Depth constraint point
ECS 269	17° 12' 1.4"	69° 55' 24.8"	1.00	Depth constraint point
ECS 270	17° 13' 0.0"	69° 55' 10.4"	1.00	Depth constraint point
ECS 271	17° 13' 58.5"	69° 54' 55.4"	1.00	Depth constraint point
ECS 272	17° 14' 56.9"	69° 54' 39.8"	1.00	Depth constraint point
ECS 273	17° 15' 55.1"	69° 54' 23.6"	1.00	Depth constraint point
ECS 274	17° 16' 53.1"	69° 54' 6.8"	1.00	Depth constraint point
ECS 275	17° 17' 51.0"	69° 53' 49.4"	1.00	Depth constraint point
ECS 276	17° 18' 48.7"	69° 53' 31.4"	1.00	Depth constraint point
ECS 277	17° 19' 46.2"	69° 53' 12.7"	1.00	Depth constraint point
ECS 278	17° 20' 27.3"	69° 52' 59.0"	0.72	Depth constraint point
ECS 279	17° 21' 1.1"	69° 52' 47.7"	0.59	Depth constraint point
ECS 280	17° 21' 58.3"	69° 52' 28.1"	1.00	Depth constraint point
ECS 281	17° 22' 55.3"	69° 52' 7.8"	1.00	Depth constraint point
ECS 282	17° 23' 52.1"	69° 51' 47.0"	1.00	Depth constraint point
ECS 283	17° 24' 48.8"	69° 51' 25.6"	1.00	Depth constraint point
ECS 284	17° 25' 45.2"	69° 51' 3.6"	1.00	Depth constraint point
ECS 285	17° 26' 41.4"	69° 50' 40.9"	1.00	Depth constraint point
ECS 286	17° 27' 37.3"	69° 50' 17.7"	1.00	Depth constraint point
ECS 287	17° 28' 33.1"	69° 49' 54.0"	1.00	Depth constraint point
ECS 288	17° 29' 28.6"	69° 49' 29.6"	1.00	Depth constraint point
ECS 289	17° 30' 23.9"	69° 49' 4.6"	1.00	Depth constraint point
ECS 290	17° 31' 18.9"	69° 48' 39.1"	1.00	Depth constraint point
ECS 291	17° 32' 13.7"	69° 48' 13.0"	1.00	Depth constraint point
ECS 292	17° 33' 8.2"	69° 47' 46.3"	1.00	Depth constraint point
ECS 293	17° 34' 2.5"	69° 47' 19.1"	1.00	Depth constraint point
ECS 294	17° 34' 56.5"	69° 46' 51.2"	1.00	Depth constraint point
ECS 295	17° 35' 50.3"	69° 46' 22.8"	1.00	Depth constraint point
ECS 296	17° 36' 43.7"	69° 45' 53.9"	1.00	Depth constraint point
ECS 297	17° 37' 36.9"	69° 45' 24.4"	1.00	Depth constraint point
ECS 298	17° 38' 29.8"	69° 44' 54.3"	1.00	Depth constraint point
ECS 299	17° 39' 22.4"	69° 44' 23.7"	1.00	Depth constraint point

Submission by the Republic of Mauritius to the Commission on the Limits of the Continental Shelf concerning the Extended Continental Shelf in the region of Rodrigues Island



Point ID	Latitude (deg min sec S)	Longitude (deg min sec E)	Distance (M)	Article 76 criterion
ECS 300	17° 40' 14.7"	69° 43' 52.5"	1.00	Depth constraint point
ECS 301	17° 41' 6.7"	69° 43' 20.8"	1.00	Depth constraint point
ECS 302	17° 41' 58.4"	69° 42' 48.5"	1.00	Depth constraint point
ECS 303	17° 42' 49.8"	69° 42' 15.7"	1.00	Depth constraint point
ECS 304	17° 43' 40.8"	69° 41' 42.3"	1.00	Depth constraint point
ECS 305	17° 44' 31.6"	69° 41' 8.5"	1.00	Depth constraint point
ECS 306	17° 45' 22.0"	69° 40' 34.0"	1.00	Depth constraint point
ECS 307	17° 45' 51.5"	69° 40' 13.5"	0.59	Depth constraint point
ECS 308	17° 46' 30.4"	69° 39' 46.1"	0.78	Depth constraint point
ECS 309	17° 47' 20.0"	69° 39' 10.4"	1.00	Depth constraint point
ECS 310	17° 48' 9.2"	69° 38' 34.2"	1.00	Depth constraint point
ECS 311	17° 48' 58.2"	69° 37' 57.5"	1.00	Depth constraint point
ECS 312	17° 49' 46.7"	69° 37' 20.3"	1.00	Depth constraint point
ECS 313	17° 50' 34.9"	69° 36' 42.6"	1.00	Depth constraint point
ECS 314	17° 51' 22.7"	69° 36' 4.3"	1.00	Depth constraint point
ECS 315	17° 51' 59.8"	69° 35' 34.2"	0.78	Depth constraint point
ECS 316	17° 52' 42.7"	69° 34' 59.2"	0.90	Depth constraint point
ECS 317	17° 53' 29.8"	69° 34' 20.0"	1.00	Depth constraint point
ECS 318	17° 54' 16.6"	69° 33' 40.4"	1.00	Depth constraint point
ECS 319	17° 55' 3.0"	69° 33' 0.2"	1.00	Depth constraint point
ECS 320	17° 55' 49.0"	69° 32' 19.6"	1.00	Depth constraint point
ECS 321	17° 56' 34.6"	69° 31' 38.4"	1.00	Depth constraint point
ECS 322	17° 57' 19.8"	69° 30' 56.8"	1.00	Depth constraint point
ECS 323	17° 58' 4.6"	69° 30' 14.8"	1.00	Depth constraint point
ECS 324	17° 58' 48.9"	69° 29' 32.2"	1.00	Depth constraint point
ECS 325	17° 59' 32.9"	69° 28' 49.2"	1.00	Depth constraint point
ECS 326	18° 0' 16.5"	69° 28' 5.7"	1.00	Depth constraint point
ECS 327	18° 0' 59.6"	69° 27' 21.7"	1.00	Depth constraint point
ECS 328	18° 1' 42.3"	69° 26' 37.3"	1.00	Depth constraint point
ECS 329	18° 2' 24.6"	69° 25' 52.5"	1.00	Depth constraint point
ECS 330	18° 3' 6.5"	69° 25' 7.2"	1.00	Depth constraint point
ECS 331	18° 3' 26.8"	69° 24' 44.7"	0.49	Depth constraint point / 350M constraint point
ECS 332	18° 4' 12.8"	69° 24' 59.5"	0.80	350 M constraint point
ECS 333	18° 5' 10.4"	69° 25' 17.7"	1.00	350 M constraint point
ECS 334	18° 6' 8.1"	69° 25' 35.9"	1.00	350 M constraint point
ECS 335	18° 7' 5.9"	69° 25' 53.8"	1.00	350 M constraint point
ECS 336	18° 8' 3.7"	69° 26' 11.6"	1.00	350 M constraint point
ECS 337	18° 9' 1.5"	69° 26' 29.2"	1.00	350 M constraint point

Submission by the Republic of Mauritius to the Commission on the Limits of the Continental Shelf concerning the Extended Continental Shelf in the region of Rodrigues Island



Point ID	Latitude (deg min sec S)	Longitude (deg min sec E)	Distance (M)	Article 76 criterion
ECS 338	18° 9' 59.4"	69° 26' 46.6"	1.00	350 M constraint point
ECS 339	18° 10' 57.3"	69° 27' 3.9"	1.00	350 M constraint point
ECS 340	18° 11' 55.3"	69° 27' 21.0"	1.00	350 M constraint point
ECS 341	18° 12' 53.3"	69° 27' 37.9"	1.00	350 M constraint point
ECS 342	18° 13' 51.4"	69° 27' 54.7"	1.00	350 M constraint point
ECS 343	18° 14' 49.5"	69° 28' 11.3"	1.00	350 M constraint point
ECS 344	18° 15' 47.6"	69° 28' 27.7"	1.00	350 M constraint point
ECS 345	18° 16' 45.9"	69° 28' 44.0"	1.00	350 M constraint point
ECS 346	18° 17' 44.1"	69° 29' 0.0"	1.00	350 M constraint point
ECS 347	18° 18' 21.5"	69° 29' 10.3"	0.64	350 M constraint point
ECS 348	18° 18' 42.4"	69° 29' 16.0"	0.36	350 M constraint point
ECS 349	18° 19' 40.7"	69° 29' 31.7"	1.00	350 M constraint point
ECS 350	18° 20' 39.1"	69° 29' 47.3"	1.00	350 M constraint point
ECS 351	18° 21' 37.5"	69° 30' 2.8"	1.00	350 M constraint point
ECS 352	18° 22' 35.9"	69° 30' 18.0"	1.00	350 M constraint point
ECS 353	18° 23' 34.4"	69° 30' 33.1"	1.00	350 M constraint point
ECS 354	18° 24' 32.9"	69° 30' 48.0"	1.00	350 M constraint point
ECS 355	18° 25' 31.5"	69° 31' 2.8"	1.00	350 M constraint point
ECS 356	18° 26' 30.1"	69° 31' 17.4"	1.00	350 M constraint point
ECS 357	18° 27' 28.8"	69° 31' 31.8"	1.00	350 M constraint point
ECS 358	18° 28' 27.4"	69° 31' 46.0"	1.00	350 M constraint point
ECS 359	18° 29' 26.2"	69° 32' 0.1"	1.00	350 M constraint point
ECS 360	18° 30' 24.9"	69° 32' 13.9"	1.00	350 M constraint point
ECS 361	18° 31' 23.7"	69° 32' 27.7"	1.00	350 M constraint point
ECS 362	18° 32' 22.5"	69° 32' 41.2"	1.00	350 M constraint point
ECS 363	18° 33' 21.4"	69° 32' 54.6"	1.00	350 M constraint point
ECS 364	18° 34' 20.3"	69° 33' 7.8"	1.00	350 M constraint point
ECS 365	18° 35' 19.3"	69° 33' 20.8"	1.00	350 M constraint point
ECS 366	18° 36' 18.2"	69° 33' 33.6"	1.00	350 M constraint point
ECS 367	18° 37' 17.3"	69° 33' 46.3"	1.00	350 M constraint point
ECS 368	18° 38' 16.3"	69° 33' 58.8"	1.00	350 M constraint point
ECS 369	18° 39' 15.4"	69° 34' 11.1"	1.00	350 M constraint point
ECS 370	18° 40' 14.5"	69° 34' 23.3"	1.00	350 M constraint point
ECS 371	18° 41' 13.6"	69° 34' 35.3"	1.00	350 M constraint point
ECS 372	18° 42' 12.8"	69° 34' 47.1"	1.00	350 M constraint point
ECS 373	18° 43' 12.0"	69° 34' 58.7"	1.00	350 M constraint point
ECS 374	18° 44' 11.2"	69° 35' 10.1"	1.00	350 M constraint point
ECS 375	18° 45' 10.5"	69° 35' 21.4"	1.00	350 M constraint point

Submission by the Republic of Mauritius to the Commission on the Limits of the Continental Shelf concerning the Extended Continental Shelf in the region of Rodrigues Island



Point ID	Latitude (deg min sec S)	Longitude (deg min sec E)	Distance (M)	Article 76 criterion
ECS 376	18° 46' 9.8"	69° 35' 32.5"	1.00	350 M constraint point
ECS 377	18° 47' 9.1"	69° 35' 43.5"	1.00	350 M constraint point
ECS 378	18° 48' 8.5"	69° 35' 54.2"	1.00	350 M constraint point
ECS 379	18° 49' 7.9"	69° 36' 4.8"	1.00	350 M constraint point
ECS 380	18° 50' 7.3"	69° 36' 15.2"	1.00	350 M constraint point
ECS 381	18° 51' 6.7"	69° 36' 25.4"	1.00	350 M constraint point
ECS 382	18° 52' 6.2"	69° 36' 35.5"	1.00	350 M constraint point
ECS 383	18° 53' 5.7"	69° 36' 45.3"	1.00	350 M constraint point
ECS 384	18° 54' 5.2"	69° 36' 55.0"	1.00	350 M constraint point
ECS 385	18° 55' 4.7"	69° 37' 4.6"	1.00	350 M constraint point
ECS 386	18° 56' 4.3"	69° 37' 13.9"	1.00	350 M constraint point
ECS 387	18° 57' 3.9"	69° 37' 23.1"	1.00	350 M constraint point
ECS 388	18° 58' 3.5"	69° 37' 32.1"	1.00	350 M constraint point
ECS 389	18° 59' 3.2"	69° 37' 40.9"	1.00	350 M constraint point
ECS 390	19° 0' 2.9"	69° 37' 49.5"	1.00	350 M constraint point
ECS 391	19° 1' 2.5"	69° 37' 58.0"	1.00	350 M constraint point
ECS 392	19° 2' 2.3"	69° 38' 6.3"	1.00	350 M constraint point
ECS 393	19° 3' 2.0"	69° 38' 14.4"	1.00	350 M constraint point
ECS 394	19° 4' 1.8"	69° 38' 22.3"	1.00	350 M constraint point
ECS 395	19° 5' 1.5"	69° 38' 30.1"	1.00	350 M constraint point
ECS 396	19° 6' 1.3"	69° 38' 37.7"	1.00	350 M constraint point
ECS 397	19° 7' 1.2"	69° 38' 45.0"	1.00	350 M constraint point
ECS 398	19° 8' 1.0"	69° 38' 52.3"	1.00	350 M constraint point
ECS 399	19° 9' 0.9"	69° 38' 59.3"	1.00	350 M constraint point
ECS 400	19° 10' 0.7"	69° 39' 6.2"	1.00	350 M constraint point
ECS 401	19° 11' 0.6"	69° 39' 12.9"	1.00	350 M constraint point
ECS 402	19° 12' 0.5"	69° 39' 19.4"	1.00	350 M constraint point
ECS 403	19° 13' 0.5"	69° 39' 25.7"	1.00	350 M constraint point
ECS 404	19° 14' 0.4"	69° 39' 31.9"	1.00	350 M constraint point
ECS 405	19° 15' 0.4"	69° 39' 37.8"	1.00	350 M constraint point
ECS 406	19° 16' 0.4"	69° 39' 43.6"	1.00	350 M constraint point
ECS 407	19° 17' 0.3"	69° 39' 49.2"	1.00	350 M constraint point
ECS 408	19° 18' 0.4"	69° 39' 54.7"	1.00	350 M constraint point
ECS 409	19° 19' 0.4"	69° 39' 59.9"	1.00	350 M constraint point
ECS 410	19° 20' 0.4"	69° 40' 5.0"	1.00	350 M constraint point
ECS 411	19° 21' 0.5"	69° 40' 9.9"	1.00	350 M constraint point
ECS 412	19° 22' 0.5"	69° 40' 14.6"	1.00	350 M constraint point
ECS 413	19° 23' 0.6"	69° 40' 19.2"	1.00	350 M constraint point

Submission by the Republic of Mauritius to the Commission on the Limits of the Continental Shelf concerning the Extended Continental Shelf in the region of Rodrigues Island



Point ID	Latitude (deg min sec S)	Longitude (deg min sec E)	Distance (M)	Article 76 criterion
ECS 414	19° 24' 0.7"	69° 40' 23.5"	1.00	350 M constraint point
ECS 415	19° 25' 0.8"	69° 40' 27.7"	1.00	350 M constraint point
ECS 416	19° 26' 0.9"	69° 40' 31.7"	1.00	350 M constraint point
ECS 417	19° 27' 1.0"	69° 40' 35.6"	1.00	350 M constraint point
ECS 418	19° 28' 1.1"	69° 40' 39.2"	1.00	350 M constraint point
ECS 419	19° 29' 1.3"	69° 40' 42.7"	1.00	350 M constraint point
ECS 420	19° 30' 1.4"	69° 40' 45.9"	1.00	350 M constraint point
ECS 421	19° 31' 1.6"	69° 40' 49.0"	1.00	350 M constraint point
ECS 422	19° 31' 49.4"	69° 40' 51.4"	0.79	350 M constraint point
ECS 423	19° 32' 1.8"	69° 40' 52.0"	0.21	350 M constraint point
ECS 424	19° 33' 1.9"	69° 40' 54.8"	1.00	350 M constraint point
ECS 425	19° 34' 2.1"	69° 40' 57.4"	1.00	350 M constraint point
ECS 426	19° 35' 2.3"	69° 40' 59.9"	1.00	350 M constraint point
ECS 427	19° 36' 2.5"	69° 41' 2.1"	1.00	350 M constraint point
ECS 428	19° 37' 2.7"	69° 41' 4.2"	1.00	350 M constraint point
ECS 429	19° 38' 2.9"	69° 41' 6.1"	1.00	350 M constraint point
ECS 430	19° 39' 3.1"	69° 41' 7.8"	1.00	350 M constraint point
ECS 431	19° 40' 3.3"	69° 41' 9.4"	1.00	350 M constraint point
ECS 432	19° 41' 3.5"	69° 41' 10.7"	1.00	350 M constraint point
ECS 433	19° 42' 3.7"	69° 41' 11.9"	1.00	350 M constraint point
ECS 434	19° 43' 3.9"	69° 41' 12.9"	1.00	350 M constraint point
ECS 435	19° 44' 4.2"	69° 41' 13.7"	1.00	350 M constraint point
ECS 436	19° 45' 4.4"	69° 41' 14.4"	1.00	350 M constraint point
ECS 437	19° 46' 4.6"	69° 41' 14.8"	1.00	350 M constraint point
ECS 438	19° 47' 4.8"	69° 41' 15.1"	1.00	350 M constraint point
ECS 439	19° 48' 5.1"	69° 41' 15.2"	1.00	350 M constraint point
ECS 440	19° 49' 5.3"	69° 41' 15.1"	1.00	350 M constraint point
ECS 441	19° 50' 5.5"	69° 41' 14.8"	1.00	350 M constraint point
ECS 442	19° 51' 5.7"	69° 41' 14.4"	1.00	350 M constraint point
ECS 443	19° 52' 6.0"	69° 41' 13.7"	1.00	350 M constraint point
ECS 444	19° 53' 6.2"	69° 41' 12.9"	1.00	350 M constraint point
ECS 445	19° 54' 6.4"	69° 41' 11.9"	1.00	350 M constraint point
ECS 446	19° 55' 6.6"	69° 41' 10.8"	1.00	350 M constraint point
ECS 447	19° 55' 55.5"	69° 41' 9.7"	0.81	350 M constraint point / 60 M distance criterion
ECS 448	19° 56' 33.8"	69° 40' 30.6"	0.88	60 M distance criterion
ECS 449	19° 57' 16.5"	69° 39' 45.6"	1.00	60 M distance criterion
ECS 450	19° 57' 58.4"	69° 38' 59.9"	1.00	60 M distance criterion
ECS 451	19° 58' 39.6"	69° 38' 13.5"	1.00	60 M distance criterion

Submission by the Republic of Mauritius to the Commission on the Limits of the Continental Shelf concerning the Extended Continental Shelf in the region of Rodrigues Island





Point ID	Latitude (deg min sec S)	Longitude (deg min sec E)	Distance (M)	Article 76 criterion
ECS 452	19° 59' 20.0"	69° 37' 26.3"	1.00	60 M distance criterion
ECS 453	19° 59' 59.7"	69° 36' 38.4"	1.00	60 M distance criterion
ECS 454	20° 0' 38.7"	69° 35' 49.8"	1.00	60 M distance criterion
ECS 455	20° 1' 16.9"	69° 35' 0.5"	1.00	60 M distance criterion
ECS 456	20° 1' 54.2"	69° 34' 10.5"	1.00	60 M distance criterion
ECS 457	20° 2' 30.8"	69° 33' 19.9"	1.00	60 M distance criterion
ECS 458	20° 3' 6.6"	69° 32' 28.6"	1.00	60 M distance criterion
ECS 459	20° 3' 41.6"	69° 31' 36.7"	1.00	60 M distance criterion
ECS 460	20° 4' 15.7"	69° 30' 44.2"	1.00	60 M distance criterion
ECS 461	20° 4' 49.0"	69° 29' 51.1"	1.00	60 M distance criterion
ECS 462	20° 5' 21.4"	69° 28' 57.4"	1.00	60 M distance criterion
ECS 463	20° 5' 53.0"	69° 28' 3.1"	1.00	60 M distance criterion
ECS 464	20° 6' 23.8"	69° 27' 8.3"	1.00	60 M distance criterion
ECS 465	20° 6' 53.6"	69° 26' 13.0"	1.00	60 M distance criterion
ECS 466	20° 7' 22.6"	69° 25' 17.1"	1.00	60 M distance criterion
ECS 467	20° 7' 50.7"	69° 24' 20.7"	1.00	60 M distance criterion
ECS 468	20° 8' 17.9"	69° 23' 23.8"	1.00	60 M distance criterion
ECS 469	20° 8' 44.2"	69° 22' 26.4"	1.00	60 M distance criterion
ECS 470	20° 9' 9.6"	69° 21' 28.6"	1.00	60 M distance criterion
ECS 471	20° 9' 34.1"	69° 20' 30.3"	1.00	60 M distance criterion
ECS 472	20° 9' 57.6"	69° 19' 31.6"	1.00	60 M distance criterion
ECS 473	20° 10' 20.2"	69° 18' 32.5"	1.00	60 M distance criterion
ECS 474	20° 10' 41.9"	69° 17' 33.0"	1.00	60 M distance criterion
ECS 475	20° 11' 2.6"	69° 16' 33.1"	1.00	60 M distance criterion
ECS 476	20° 11' 22.4"	69° 15' 32.8"	1.00	60 M distance criterion
ECS 477	20° 11' 41.2"	69° 14' 32.2"	1.00	60 M distance criterion
ECS 478	20° 11' 59.0"	69° 13' 31.3"	1.00	60 M distance criterion
ECS 479	20° 12' 15.9"	69° 12' 30.1"	1.00	60 M distance criterion
ECS 480	20° 12' 31.8"	69° 11' 28.5"	1.00	60 M distance criterion
ECS 481	20° 12' 46.8"	69° 10' 26.7"	1.00	60 M distance criterion
ECS 482	20° 13' 0.7"	69° 9' 24.7"	1.00	60 M distance criterion
ECS 483	20° 13' 13.7"	69° 8' 22.4"	1.00	60 M distance criterion
ECS 484	20° 13' 25.7"	69° 7' 19.8"	1.00	60 M distance criterion
ECS 485	20° 13' 36.7"	69° 6' 17.1"	1.00	60 M distance criterion
ECS 486	20° 13' 46.7"	69° 5' 14.2"	1.00	60 M distance criterion
ECS 487	20° 13' 55.7"	69° 4' 11.1"	1.00	60 M distance criterion
ECS 488	20° 14' 3.7"	69° 3' 7.9"	1.00	60 M distance criterion
ECS 489	20° 14' 10.7"	69° 2' 4.5"	1.00	60 M distance criterion

Submission by the Republic of Mauritius to the Commission on the Limits of the Continental Shelf concerning the Extended Continental Shelf in the region of Rodrigues Island



Point ID	Latitude (deg min sec S)	Longitude (deg min sec E)	Distance (M)	Article 76 criterion
ECS 490	20° 14' 16.6"	69° 1' 1.0"	1.00	60 M distance criterion
ECS 491	20° 14' 21.6"	68° 59' 57.4"	1.00	60 M distance criterion
ECS 492	20° 14' 25.6"	68° 58' 53.7"	1.00	60 M distance criterion
ECS 493	20° 14' 28.6"	68° 57' 50.0"	1.00	60 M distance criterion
ECS 494	20° 14' 30.6"	68° 56' 46.2"	1.00	60 M distance criterion
ECS 495	20° 14' 31.5"	68° 55' 42.4"	1.00	60 M distance criterion
ECS 496	20° 14' 31.4"	68° 54' 38.6"	1.00	60 M distance criterion
ECS 497	20° 25' 49.2"	67° 51' 57.8"	59.97	60 M distance criterion
ECS 498	20° 25' 54.1"	67° 51' 44.3"	0.23	60 M distance criterion
ECS 499	20° 26' 15.0"	67° 50' 44.4"	1.00	60 M distance criterion
ECS 500	20° 26' 34.9"	67° 49' 44.1"	1.00	60 M distance criterion
ECS 501	20° 26' 53.9"	67° 48' 43.4"	1.00	60 M distance criterion
ECS 502	20° 27' 11.9"	67° 47' 42.5"	1.00	60 M distance criterion
ECS 503	20° 27' 28.9"	67° 46' 41.2"	1.00	60 M distance criterion
ECS 504	20° 27' 45.0"	67° 45' 39.6"	1.00	60 M distance criterion
ECS 505	20° 28' 0.0"	67° 44' 37.7"	1.00	60 M distance criterion
ECS 506	20° 28' 14.2"	67° 43' 35.6"	1.00	60 M distance criterion
ECS 507	20° 28' 27.3"	67° 42' 33.2"	1.00	60 M distance criterion
ECS 508	20° 28' 39.4"	67° 41' 30.6"	1.00	60 M distance criterion
ECS 509	20° 28' 50.6"	67° 40' 27.8"	1.00	60 M distance criterion
ECS 510	20° 29' 0.7"	67° 39' 24.8"	1.00	60 M distance criterion
ECS 511	20° 29' 9.9"	67° 38' 21.7"	1.00	60 M distance criterion
ECS 512	20° 29' 18.0"	67° 37' 18.4"	1.00	60 M distance criterion
ECS 513	20° 29' 25.2"	67° 36' 14.9"	1.00	60 M distance criterion
ECS 514	20° 29' 31.3"	67° 35' 11.3"	1.00	60 M distance criterion
ECS 515	20° 29' 36.5"	67° 34' 7.6"	1.00	60 M distance criterion
ECS 516	20° 29' 40.6"	67° 33' 3.9"	1.00	60 M distance criterion
ECS 517	20° 29' 43.7"	67° 32' 0.0"	1.00	60 M distance criterion
ECS 518	20° 29' 45.8"	67° 30' 56.2"	1.00	60 M distance criterion
ECS 519	20° 29' 47.0"	67° 29' 52.3"	1.00	60 M distance criterion
ECS 520	20° 29' 47.1"	67° 28' 48.4"	1.00	60 M distance criterion
ECS 521	20° 29' 46.1"	67° 27' 44.5"	1.00	60 M distance criterion
ECS 522	20° 29' 44.2"	67° 26' 40.6"	1.00	60 M distance criterion
ECS 523	20° 29' 41.3"	67° 25' 36.7"	1.00	60 M distance criterion
ECS 524	20° 29' 37.4"	67° 24' 33.0"	1.00	60 M distance criterion
ECS 525	20° 29' 32.4"	67° 23' 29.3"	1.00	60 M distance criterion
ECS 526	20° 29' 26.5"	67° 22' 25.7"	1.00	60 M distance criterion
ECS 527	20° 29' 19.5"	67° 21' 22.2"	1.00	60 M distance criterion

Submission by the Republic of Mauritius to the Commission on the Limits of the Continental Shelf concerning the Extended Continental Shelf in the region of Rodrigues Island



<b>Point ID</b>	<b>Latitude (deg min sec S)</b>	<b>Longitude (deg min sec E)</b>	<b>Distance (M)</b>	<b>Article 76 criterion</b>
ECS 528	20° 29' 11.5"	67° 20' 18.8"	1.00	60 M distance criterion
ECS 529	20° 29' 2.6"	67° 19' 15.6"	1.00	60 M distance criterion
ECS 530	20° 28' 52.6"	67° 18' 12.6"	1.00	60 M distance criterion
ECS 531	20° 28' 41.7"	67° 17' 9.8"	1.00	60 M distance criterion
ECS 532	20° 28' 29.7"	67° 16' 7.1"	1.00	60 M distance criterion
ECS 533	20° 28' 16.8"	67° 15' 4.7"	1.00	60 M distance criterion
ECS 534	20° 28' 2.9"	67° 14' 2.5"	1.00	60 M distance criterion
ECS 535	20° 27' 48.0"	67° 13' 0.6"	1.00	60 M distance criterion
ECS 536	20° 27' 32.1"	67° 11' 59.0"	1.00	60 M distance criterion
ECS 537	20° 27' 15.3"	67° 10' 57.6"	1.00	60 M distance criterion
ECS 538	20° 26' 57.5"	67° 9' 56.6"	1.00	60 M distance criterion
ECS 539	20° 26' 38.7"	67° 8' 55.9"	1.00	60 M distance criterion
ECS 540	20° 26' 19.0"	67° 7' 55.5"	1.00	60 M distance criterion
ECS 541	20° 25' 58.3"	67° 6' 55.5"	1.00	60 M distance criterion
ECS 542	20° 25' 36.7"	67° 5' 55.9"	1.00	60 M distance criterion
ECS 543	20° 25' 14.1"	67° 4' 56.7"	1.00	60 M distance criterion
ECS 544	20° 24' 50.6"	67° 3' 57.8"	1.00	60 M distance criterion
ECS 545	20° 24' 26.2"	67° 2' 59.5"	1.00	60 M distance criterion
ECS 546	20° 24' 0.8"	67° 2' 1.5"	1.00	60 M distance criterion
ECS 547	20° 23' 34.6"	67° 1' 4.0"	1.00	60 M distance criterion
ECS 548	20° 23' 7.4"	67° 0' 7.0"	1.00	60 M distance criterion
ECS 549	20° 22' 39.3"	66° 59' 10.5"	1.00	60 M distance criterion
ECS 550	20° 22' 16.2"	66° 58' 25.8"	0.80	60 M distance criterion chord / Baseline +200M