



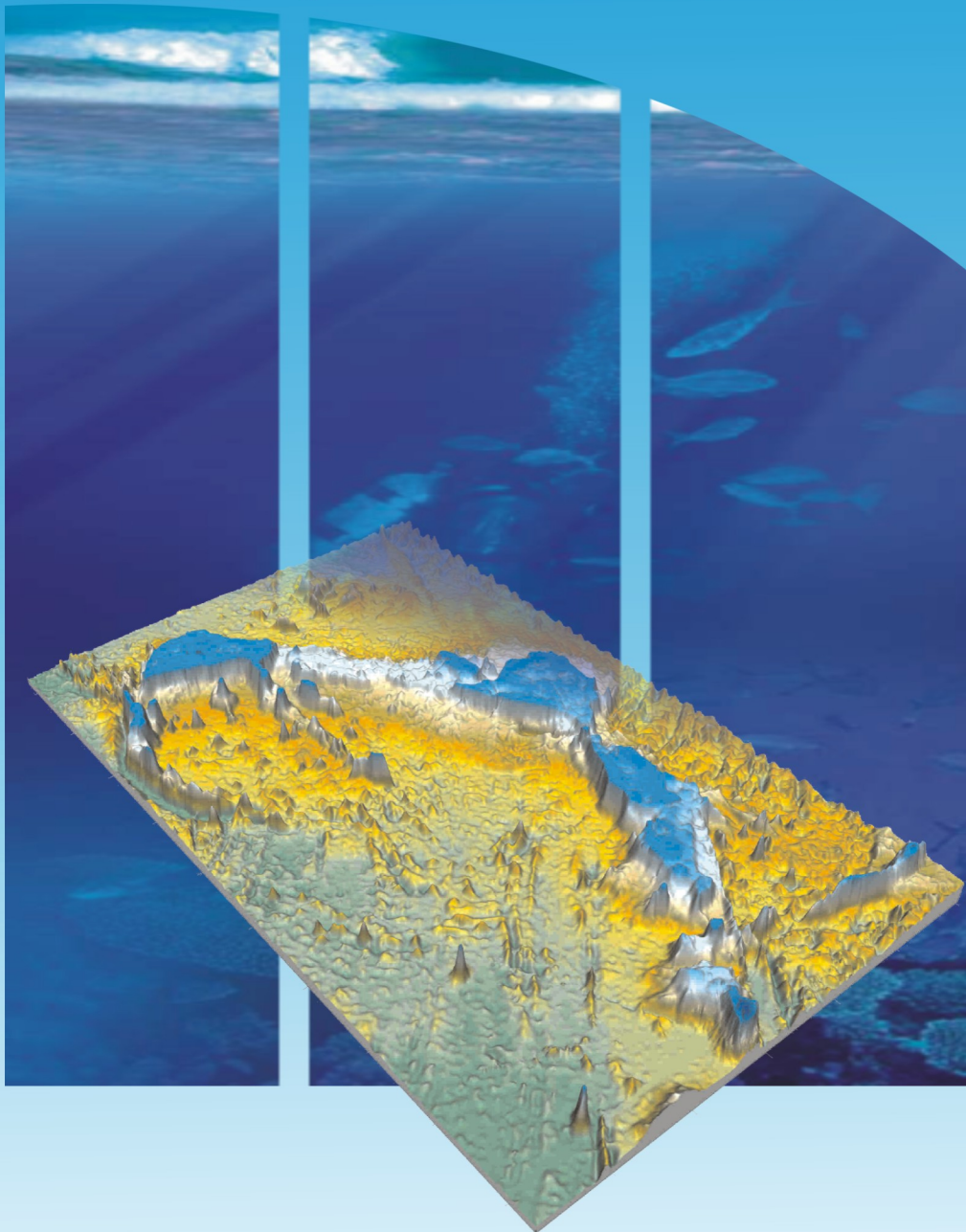
Republic of Mauritius



Republic of Seychelles

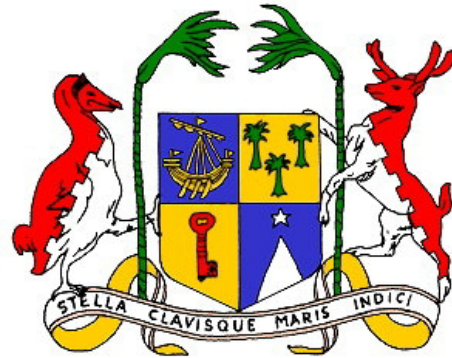
United Nations Convention on the Law of the Sea

Joint Submission to the Commission on the Limits of the Continental Shelf concerning the Mascarene Plateau region



Executive Summary (Revised)

United Nations Convention on the Law of the Sea



Joint Submission to the Commission on the Limits of the Continental Shelf concerning the Mascarene Plateau

Republic of Seychelles

Republic of Mauritius

EXECUTIVE SUMMARY (Revised)

[SMS-ES-DOC_Rev](#)

PREFACE

This Submission was prepared by the Government of the Republic of Seychelles and the Government of the Republic of Mauritius jointly.

The following Ministries, Departments, Statutory Corporations and Agencies of the Government of the Republic of Mauritius were responsible for the preparation of this Submission:

Prime Minister's Office
Ministry of Foreign Affairs, Regional Integration & International Trade
Attorney-General's Office
Ministry of Housing and Lands
Mauritius Oceanography Institute

The following Ministries, Departments, and Statutory Corporations of, and advisors to, the Government of the Republic of Seychelles were responsible for the preparation of this Submission:

Ministry of National Development
Ministry of Foreign Affairs
Ministry of Environment, Natural Resources and Transport
Department of Defence, Seychelles Coast Guard
Department of Legal Affairs
Seychelles Petroleum Company
Mr Joseph Athanasius, Legal Consultant

The following persons acted as legal and technical advisors during the preparation of this Submission¹:

Mr Joshua Brien, Legal Adviser, Commonwealth Secretariat, London
Mr Harald Brekke, Member of the Commission on the Limits of the Continental Shelf
Dr Karl Hinz, Emeritus Professor, University of Hannover, Germany;
former member of the Commission on the Limits of the Continental Shelf (1997-2002)

¹ The Republic of Mauritius and the Republic of Seychelles acknowledge the advice and/or assistance received from the following: The Government of India; UNEP Shelf Program (GRID-Arendal); Trust Fund established under Annex II to UNGA Res. 55/7; Dr James Howard Leven; Mr Christopher Scotese; Dr Indur Fagoonee; Cmdr. JC White; Lt. Cmdr. Ian Russell; Helicopter Seychelles Ltd; and, the Island Development Corporation of Seychelles.

TABLE OF CONTENTS

1.	Introduction	4
2.	Outer Limit of the Continental Shelf in the Mascarene Plateau	7
3.	Maps and Coordinates	8
4.	Provisions of Article 76 Invoked	10
5.	Outstanding Maritime Delimitations	10
6.	Detailed Description of the Outer Limit of the Extended Continental Shelf	11
7.	Commission Members Who Provided Advice on this Submission	13
8.	Note of Authentication	15
9.	Annexes	16

Annexes

Annex 1—Table listing the points defining
the outer limit of the extended continental shelf
in Decimal Degrees.....[SMS-ES-ANNEX 1_R](#)

Annex 2—Table listing the points defining
the outer limit of the extended continental shelf
in Degrees, Minutes and Seconds.....[SMS-ES-ANNEX 2_R](#)

Maps

(A0 Executive Summary map supplied separately)

The outer limit of the continental shelf in
the Mascarene Plateau region showing the outer limit line
and area of extended continental shelf.....[SMS-ES-MAP 1_R](#)

The outer limit of the continental shelf in
the Mascarene Plateau region and the Article 76
fixed points[SMS-ES-MAP 2_R](#)

1. INTRODUCTION

- 1.1** This Submission to the Commission on the Limits of the Continental Shelf ('the Commission') is made by the Republic of Mauritius and the Republic of Seychelles (hereinafter referred to collectively as 'the two coastal States') pursuant to paragraph 8 of Article 76 of the 1982 United Nations Convention on the Law of the Sea ('the Convention') in support of the establishment by the two coastal States of the outer limits of the continental shelf that lie beyond 200 nautical miles (M) from the baselines from which the breadth of the territorial sea of the two coastal States is measured (hereinafter referred to as 'the territorial sea baselines') in the region of the Mascarene Plateau.
- 1.2** The two coastal States are small island nations located in the southwest Indian Ocean and are both Contracting Parties to the Convention. In this regard, the two States each respectively signed the Convention on the day it was opened for signature on 10 December 1982. The Republic of Seychelles subsequently ratified the Convention on 16 September 1991. The Republic of Mauritius ratified the Convention on 4 November 1994.
- 1.3** Under Article 4 of Annex II to the Convention, as supplemented by the decisions of the Eleventh and Eighteenth Meetings of the States Parties to the Convention respectively (SPLOS/72) and (SPLOS/183) regarding the ten-year period established by Article 4 of Annex II to the Convention, a coastal State for which the Convention entered into force before 13 May 1999 is required to submit particulars of the outer limits of the continental shelf to the Commission, together with supporting scientific and technical data, by 13 May 2009. This Submission by the two coastal States satisfies that obligation.
- 1.4** Considering that the two coastal States are of the view that they are each entitled to an area of continental shelf that lies beyond 200 M measured from their territorial sea baselines in the region of the Mascarene Plateau, they have agreed to make a Joint Submission to the Commission for an extended

continental shelf in this region in accordance with paragraph 4 of Annex I to the Rules of Procedure of the Commission on the Limits of the Continental Shelf (CLCS/40/Rev.1), adopted by the Commission on 17 April 2008 (hereinafter referred to as the 'Rules of Procedure').

- 1.5** This Submission is therefore of a joint nature, and comprises a single document prepared jointly and collaboratively by the two coastal States.
- 1.6** In addition, in accordance with paragraph 3 of Annex I to the Rules of Procedure, this Submission represents a partial submission in respect of a portion only of the extended continental shelf claimed by each of the two coastal States. Submissions for such other portions of extended continental shelf shall be made by each of the two coastal States individually at an appropriate time.
- 1.7** The two coastal States have agreed further to make this Submission without prejudice to the delimitation of maritime boundaries between them, pursuant to paragraph 4(a) of Annex I to the Rules of Procedure, in the region covered by this Submission. Accordingly, the delimitation of the extended continental shelf in this area shall be agreed between them on the basis of international law after the Commission has concluded its examination of this Submission and made recommendations to the two coastal States concerning the establishment of the outer limits of the extended continental shelf.
- 1.8** The area of continental shelf lying beyond 200 M measured from the territorial sea baselines of the two coastal States is referred to in this Submission as the 'extended continental shelf'. The two coastal States have also, for the purposes of this Submission, interpreted all references in Article 76 of the Convention to 'a coastal State', 'the coastal State', 'its territorial sea', and 'its land territory', as applicable to 'the two coastal States', 'their territorial seas' and, 'their land territories' respectively.

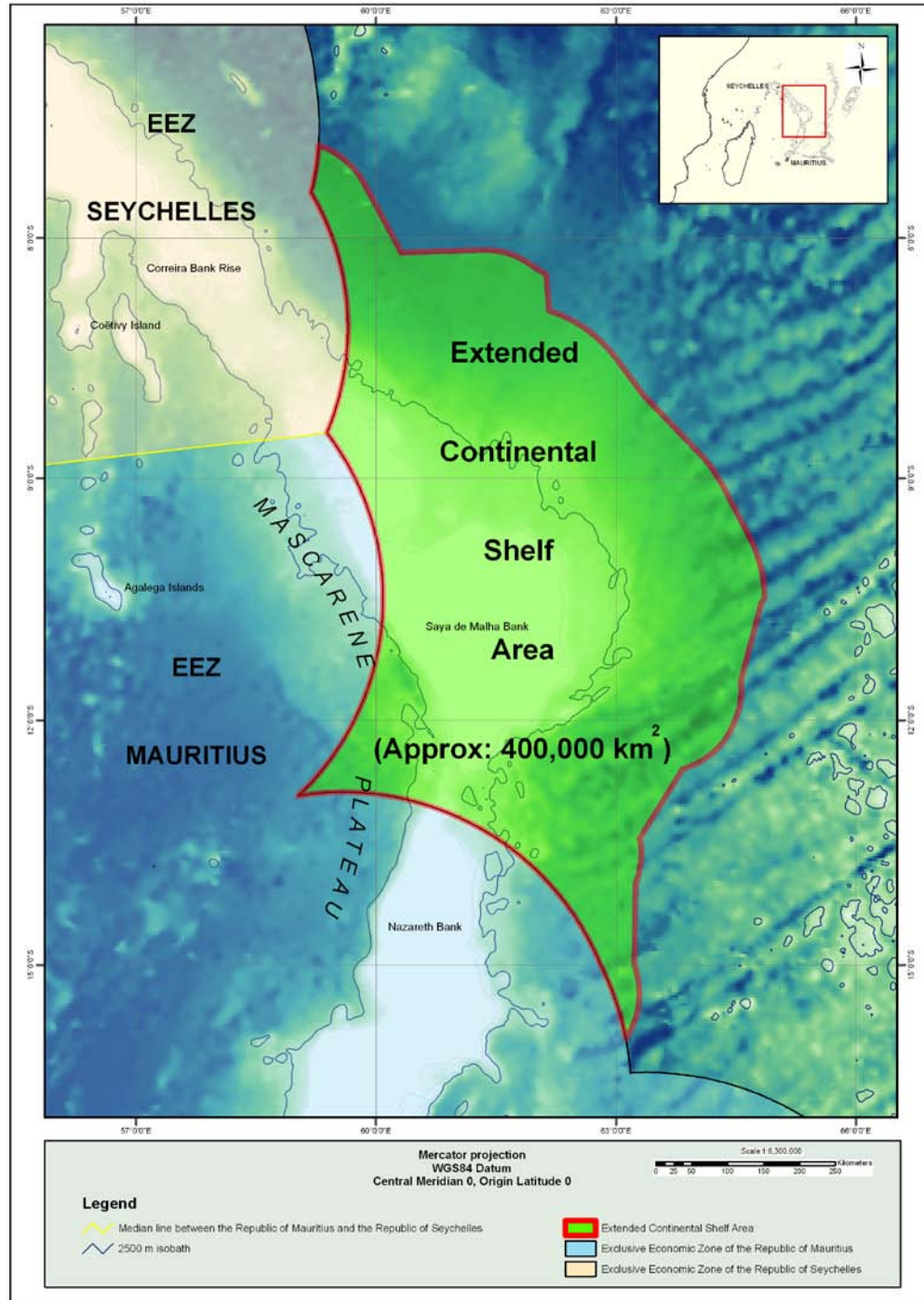
- 1.9** The two coastal States have, for the purposes of preparing this Submission, applied the relevant provisions of Article 76 of the Convention, the relevant provisions of the Rules of Procedure and the recommendations contained in the Scientific and Technical Guidelines of the Commission on the Limits of the Continental Shelf (CLCS/11) adopted by the Commission on 13 May 1999 (hereinafter referred to as ‘the Guidelines’).
- 1.10** In accordance with the specifications of the Commission set out in Annex III to the Rules of Procedure and paragraphs 9.1.3 to 9.1.6 of the Guidelines, the submission of the two coastal States consists of three separate parts comprising an Executive Summary; a core analytical and descriptive part of the submission (‘the Main Body’); and, a part containing all required supporting scientific and technical data arranged in a series of annexes (‘supporting scientific and technical data’).
- 1.11** The two coastal States wish to highlight that this Submission has been prepared notwithstanding significant challenges posed by geographical isolation, technical capacity and financial resources. In this regard, the two coastal States have received legal and technical assistance from the Commonwealth Secretariat during the preparation of this Submission.

2. OUTER LIMIT OF THE CONTINENTAL SHELF IN THE REGION OF THE MASCARENE PLATEAU

- 2.1** As provided for under paragraph 1 of Article 76 of the Convention, the two coastal States have a continental shelf comprising the seabed and subsoil of the submarine areas that extend beyond their territorial seas throughout the natural prolongation of their respective land territory to the outer edge of the continental margin, up to the limits provided for in paragraphs 4 to 6 of Article 76 or, to a distance of 200 M from the territorial sea baselines of the two coastal States where the outer edge of the continental margin does not extend up to that distance.
- 2.2** Paragraphs 4 to 6 of Article 76 of the Convention elaborate provisions setting out the manner in which a coastal State may establish the outer edge of its continental margin, and its extended continental shelf, wherever that margin extends beyond 200 M measured from the territorial sea baselines.
- 2.3** As set out in paragraph 7 of Article 76 of the Convention, a coastal State is to delineate the outer limits of the extended continental shelf by straight lines not exceeding 60 M in length, connecting fixed points ('fixed points') defined by coordinates of latitude and longitude.
- 2.4** The data submitted by the two coastal States in support of this Submission establish that the outer edge of the continental margin appurtenant to the relevant land territory of the two coastal States in the region of the Mascarene Plateau extends beyond 200 M measured from the territorial sea baselines of the two coastal States.
- 2.5** Section 6 of the Executive Summary provides an outline of the Mascarene Plateau, including a depiction of the outer limits of the extended continental shelf submitted by the two coastal States in this region. A map of the outer limit of the extended continental shelf is shown in [SMS-ES-MAP 1_R](#).

3. MAPS AND COORDINATES

- 3.1** Two (2) maps at an appropriate scale are included in this Executive Summary in two forms: as [SMS-ES-MAP 1_R](#) and [SMS-ES-MAP 2_R](#) within this document, and as separate A0-size maps. The first map provides an overview of the area of extended continental shelf submitted by the two coastal States to the Commission in this Submission. The second map depicts the location of the fixed points that define the outer limit of the relevant area and the provisions of Article 76 invoked.
- 3.2** Lists of coordinates of the fixed points that define the outer limit of the extended continental shelf in this Submission are supplied in [SMS-ES-ANNEX 1_R](#) and [SMS-ES-ANNEX 2_R](#), which set out the fixed points defining the outer limit of the extended continental shelf in the Mascarene Plateau in decimal degrees and in degrees, minutes and decimal seconds respectively. The provision of Article 76 invoked to define each fixed point, as well as the distance between adjacent points, is also indicated in [SMS-ES-ANNEX 1_R](#) and [SMS-ES-ANNEX 2_R](#).



SMS-ES-MAP 1_R

Map depicting the area of extended continental shelf of the two coastal States in the region of the Mascarene Plateau showing the outer limit line.

4. PROVISIONS OF ARTICLE 76 INVOKED

For the purposes of this Submission, the two coastal States invoke paragraphs 4(b) and 7 of Article 76 of the Convention to support the establishment of the outer limits of the extended continental shelf. Paragraphs 4 (a)(ii) and 5 of Article 76 are also invoked in respect of fixed points as outlined in Section 6 of this Executive Summary.

5. OUTSTANDING MARITIME DELIMITATIONS

5.1 The two coastal States wish to inform the Commission that the area of extended continental shelf in this Submission is not the subject of any dispute between them or any other State(s) pursuant to paragraph 2(a) of Annex I to the Rules of Procedure. Moreover, in the view of the two coastal States, the consideration of this Submission by the Commission will not prejudice matters relating to the delimitation of boundaries between them and any other State(s) pursuant to paragraph 2(b) of Annex I to the Rules of Procedure.

5.2 The two coastal States have agreed further to make this Submission without prejudice to the delimitation of maritime boundaries between them, pursuant to paragraph 4(a) of Annex I to the Rules of Procedure.

6. DETAILED DESCRIPTION OF THE OUTER LIMIT OF THE EXTENDED CONTINENTAL SHELF

Mascarene Plateau

6.1 The Mascarene Plateau is located in the southwest Indian Ocean to the east of Madagascar and is one of the few submerged marine features clearly visible from space. The Mascarene Plateau is dominated by a spectacular, geologically complex, composite seafloor high with an arcuate shape that extends on a south-south-easterly trend between latitude 4°S and 22° S. This remote and vast seafloor high is characterised by a series of plateaux, banks, shoals and islands, and is surmounted in the north by the granitic islands of the Republic of Seychelles and in the south by the Mascarene Islands, including the Island of Mauritius. The water depths in this region range on average from 8 m to 90 m, and drop to abyssal depths of 4000 m at its edges.

6.2 The Mascarene Plateau is a composite feature, composed of four major elevations and banks (Seychelles Bank, Correira Bank Rise, Saya de Malha Bank and Nazareth Bank), which evolved through a continuous process that began around 120 Ma with the onset of continental break-up of Gondwana followed by the separation of the African and Indian Plates, coupled with rifting of the western margin of India following the separation of Madagascar in the interval 83-75 Ma. The rapid northward movement of the Indian plate in the Palaeocene interval 61 Ma and the subsequent development of the Central Indian Ridge are believed to have resulted in the abandonment of these remnant micro-continental blocks that comprise the Mascarene Plateau. A later phase in the evolution of the Mascarene Plateau involved volcanic activity associated with the passage of the Réunion hotspot, a hotspot which lies under Réunion Island, which capped and had a significant bearing on the subsequent development of the Mascarene Plateau following the onset of the continental break-up and rifting process described above.

6.3 The two coastal States are of the view that the geological processes described above contributed to the formation of the Mascarene Plateau and the setting of the relevant landmasses of the two coastal States. Therefore the elevations and banks that make up the Mascarene Plateau are the submerged prolongation of the relevant landmasses of the two coastal States.

6.4 The outer limit of the extended continental shelf in the region of the Mascarene Plateau encloses an area of approximately 400,000 km² extending beyond 200 M from the territorial sea baselines of the two coastal States.

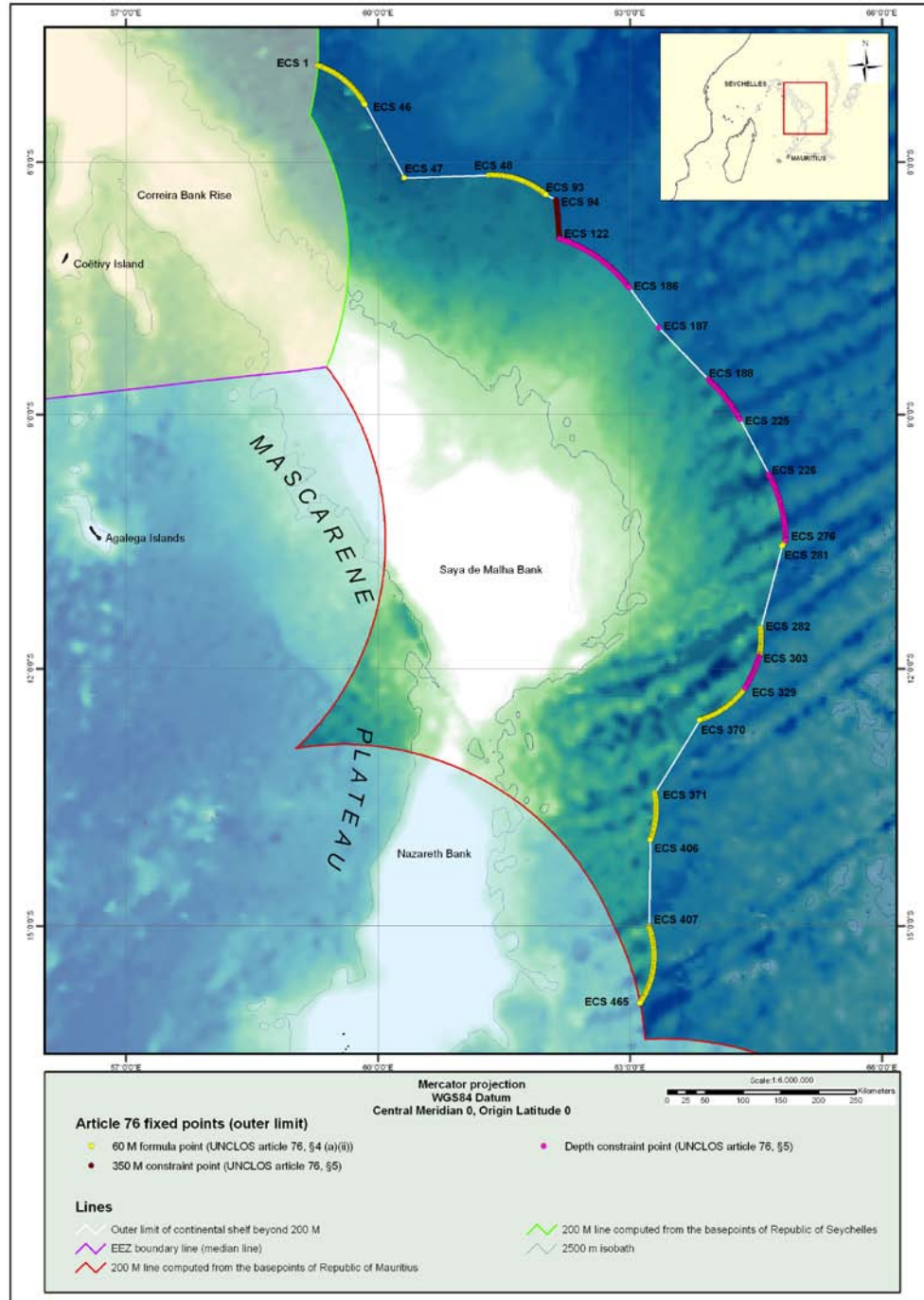
6.5 The final outer limit of the extended continental shelf in the region of the Mascarene Plateau determined by the two coastal States comprises 465 fixed points, of which:

- 257 are defined by arcs 60 M from the foot of the slope (Article 76, paragraph 4(a)(ii) of the Convention);
- 178 are defined by the constraint line 100 M from the 2500 metre isobath (Article 76, paragraph 5 of the Convention);
- 28 are defined by the constraint line 350 M from the Republic of Seychelles' territorial sea baseline forming the relevant part of the outer limit of the extended continental shelf;
- 1 point (ECS 1), where the outer limit of the extended continental shelf intersects the line 200 M from the Republic of Seychelles' territorial sea baseline forming the relevant part of the outer limit of extended continental shelf; and,
- 1 point (ECS 465), where the outer limit of the extended continental shelf intersects the line 200 M from the territorial sea baseline of the Republic of Mauritius, which forms the relevant part of the outer limit of the extended continental shelf.

- 6.6** Each successive pair of fixed points defining the outer limit of the extended continental shelf in the region of the Mascarene Plateau is connected by geodesics not exceeding 60 M in length in accordance with paragraph 5 of Article 76.
- 6.7** The list of Article 76 fixed points delineating the outer limit of the extended continental shelf in the region of the Mascarene Plateau is supplied by the two coastal States in two tables ([SMS-ES-ANNEX 1_R](#) and [SMS-ES-ANNEX 2_R](#)).
- 6.8** The two coastal States invoke Article 76 of the Convention, with particular reference to paragraphs 4(a)(ii), 4(b), 5 and 7, in support of this Submission.

7. COMMISSION MEMBERS WHO PROVIDED ADVICE ON THIS SUBMISSION

The two coastal States were assisted in the preparation of this Submission by Mr Michael Rosette, member of the Commission on the Limits of the Continental Shelf (2007-present), Mr Harald Brekke, member of the Commission on the Limits of the Continental Shelf (2002-present), Dr Galo Carrera, member of the Commission on the Limits of the Continental Shelf (2002-present) and by two former members of the Commission, Dr Andre Chan Chim Yuk (1998-2002) and, Dr Karl Hinz (1998-2002).



SMS-ES-MAP 2_R Map depicting the outer limit of the extended continental shelf in the region of the Mascarene Plateau and the Article 76 fixed points.

8. NOTE OF AUTHENTICATION

All maps, figures, charts and databases forming part of this Submission were prepared jointly by the two coastal States, by the Ministry of National Development of the Republic of Seychelles responsible for preparing such materials and for certifying their quality and reliability, and by the Mauritius Oceanography Institute, which has been entrusted by the Government of the Republic of Mauritius with responsibility for preparing such materials and certifying their quality and reliability.

SMS-ES-ANNEX 1_R

Table listing the fixed points defining the outer limit of the extended continental shelf (Decimal Degrees)

Point ID	Latitude (decimal deg°)	Longitude (decimal deg°)	Distance (M)	Article 76 criterion
ECS 1	-4.83840942	59.28253555	-	60 M distance criterion / Baseline +200M
ECS 2	-4.84380007	59.29825974	1.00	60 M distance criterion
ECS 3	-4.84935093	59.31394958	1.00	60 M distance criterion
ECS 4	-4.85533190	59.32947922	1.00	60 M distance criterion
ECS 5	-4.86139822	59.34497452	1.00	60 M distance criterion
ECS 6	-4.86781836	59.36033249	1.00	60 M distance criterion
ECS 7	-4.87443018	59.37561035	1.00	60 M distance criterion
ECS 8	-4.88125086	59.39078903	1.00	60 M distance criterion
ECS 9	-4.88844347	59.40579987	1.00	60 M distance criterion
ECS 10	-4.89581394	59.42072678	1.00	60 M distance criterion
ECS 11	-4.90351105	59.43548965	1.00	60 M distance criterion
ECS 12	-4.91124821	59.45022583	1.00	60 M distance criterion
ECS 13	-4.91947222	59.46470261	1.00	60 M distance criterion
ECS 14	-4.92774343	59.47915268	1.00	60 M distance criterion
ECS 15	-4.93642759	59.49335861	1.00	60 M distance criterion
ECS 16	-4.94515562	59.50753784	1.00	60 M distance criterion
ECS 17	-4.95434427	59.52142334	1.00	60 M distance criterion
ECS 18	-4.96365881	59.53522491	1.00	60 M distance criterion
ECS 19	-4.97306108	59.54896927	1.00	60 M distance criterion
ECS 20	-4.98286963	59.56242752	1.00	60 M distance criterion
ECS 21	-4.99280787	59.57579422	1.00	60 M distance criterion
ECS 22	-5.00303602	59.58893585	1.00	60 M distance criterion
ECS 23	-5.01340532	59.60196686	1.00	60 M distance criterion
ECS 24	-5.02407265	59.61475754	1.00	60 M distance criterion
ECS 25	-5.03495598	59.62736893	1.00	60 M distance criterion
ECS 26	-5.04590988	59.63991547	1.00	60 M distance criterion
ECS 27	-5.05727482	59.65209579	1.00	60 M distance criterion
ECS 28	-5.06871796	59.66419983	1.00	60 M distance criterion
ECS 29	-5.08027744	59.67619705	1.00	60 M distance criterion
ECS 30	-5.09225512	59.68777847	1.00	60 M distance criterion
ECS 31	-5.10423279	59.69935608	1.00	60 M distance criterion
ECS 32	-5.11643982	59.71069336	1.00	60 M distance criterion

Point ID	Latitude (decimal deg°)	Longitude (decimal deg°)	Distance (M)	Article 76 criterion
ECS 33	-5.12892818	59.72172546	1.00	60 M distance criterion
ECS 34	-5.14142561	59.73274231	1.00	60 M distance criterion
ECS 35	-5.15423536	59.74339676	1.00	60 M distance criterion
ECS 36	-5.16721344	59.75384903	1.00	60 M distance criterion
ECS 37	-5.18033123	59.76412201	1.00	60 M distance criterion
ECS 38	-5.19359636	59.77420807	1.00	60 M distance criterion
ECS 39	-5.20706606	59.78402328	1.00	60 M distance criterion
ECS 40	-5.22078753	59.79347610	1.00	60 M distance criterion
ECS 41	-5.23450851	59.80293655	1.00	60 M distance criterion
ECS 42	-5.24848032	59.81201935	1.00	60 M distance criterion
ECS 43	-5.26256227	59.82093048	1.00	60 M distance criterion
ECS 44	-5.27674294	59.82968521	1.00	60 M distance criterion
ECS 45	-5.29109049	59.83816528	1.00	60 M distance criterion
ECS 46	-5.30579758	59.84667206	1.02	60 M distance criterion
ECS 47	-6.18395185	60.31553650	59.46	60 M distance criterion
ECS 48	-6.15102148	61.31860733	59.98	60 M distance criterion
ECS 49	-6.15072489	61.32590103	0.44	60 M distance criterion
ECS 50	-6.15032244	61.34262848	1.00	60 M distance criterion
ECS 51	-6.15020084	61.35935974	1.00	60 M distance criterion
ECS 52	-6.15035629	61.37609100	1.00	60 M distance criterion
ECS 53	-6.15079212	61.39281464	1.00	60 M distance criterion
ECS 54	-6.15150452	61.40953445	1.00	60 M distance criterion
ECS 55	-6.15249586	61.42623901	1.00	60 M distance criterion
ECS 56	-6.15376806	61.44292450	1.00	60 M distance criterion
ECS 57	-6.15531445	61.45958328	1.00	60 M distance criterion
ECS 58	-6.15713739	61.47621536	1.00	60 M distance criterion
ECS 59	-6.15923929	61.49281693	1.00	60 M distance criterion
ECS 60	-6.16161489	61.50938034	1.00	60 M distance criterion
ECS 61	-6.16426945	61.52590179	1.00	60 M distance criterion
ECS 62	-6.16719580	61.54238129	1.00	60 M distance criterion
ECS 63	-6.17039633	61.55880737	1.00	60 M distance criterion
ECS 64	-6.17387152	61.57517242	1.00	60 M distance criterion
ECS 65	-6.17761612	61.59148407	1.00	60 M distance criterion
ECS 66	-6.18163252	61.60772324	1.00	60 M distance criterion
ECS 67	-6.18591881	61.62390137	1.00	60 M distance criterion
ECS 68	-6.19047451	61.64000702	1.00	60 M distance criterion
ECS 69	-6.19529772	61.65603256	1.00	60 M distance criterion
ECS 70	-6.20038605	61.67197037	1.00	60 M distance criterion
ECS 71	-6.20573950	61.68782806	1.00	60 M distance criterion
ECS 72	-6.21135855	61.70359421	1.00	60 M distance criterion

Point ID	Latitude (decimal deg°)	Longitude (decimal deg°)	Distance (M)	Article 76 criterion
ECS 73	-6.21723557	61.71926498	1.00	60 M distance criterion
ECS 74	-6.22337532	61.73483658	1.00	60 M distance criterion
ECS 75	-6.22977161	61.75030136	1.00	60 M distance criterion
ECS 76	-6.23642826	61.76566315	1.00	60 M distance criterion
ECS 77	-6.24333429	61.78090668	1.00	60 M distance criterion
ECS 78	-6.25049686	61.79603195	1.00	60 M distance criterion
ECS 79	-6.25790834	61.81103897	1.00	60 M distance criterion
ECS 80	-6.26556683	61.82592010	1.00	60 M distance criterion
ECS 81	-6.27347708	61.84067535	1.00	60 M distance criterion
ECS 82	-6.28162766	61.85529709	1.00	60 M distance criterion
ECS 83	-6.29002094	61.86977768	1.00	60 M distance criterion
ECS 84	-6.29865646	61.88411713	1.00	60 M distance criterion
ECS 85	-6.30752802	61.89831543	1.00	60 M distance criterion
ECS 86	-6.31663513	61.91236115	1.00	60 M distance criterion
ECS 87	-6.32597589	61.92625809	1.00	60 M distance criterion
ECS 88	-6.33554363	61.93999481	1.00	60 M distance criterion
ECS 89	-6.34533978	61.95356750	1.00	60 M distance criterion
ECS 90	-6.35536098	61.96697998	1.00	60 M distance criterion
ECS 91	-6.36560440	61.98022079	1.00	60 M distance criterion
ECS 92	-6.37606764	61.99328995	1.00	60 M distance criterion
ECS 93	-6.38674593	62.00619125	1.00	60 M distance criterion
ECS 94	-6.44804811	62.12438583	7.95	60 M chord/ 350M constraint point
ECS 95	-6.46021938	62.12580490	0.73	350M constraint point
ECS 96	-6.47685575	62.12772369	1.00	350M constraint point
ECS 97	-6.49349833	62.12959671	1.00	350M constraint point
ECS 98	-6.51014471	62.13142395	1.00	350M constraint point
ECS 99	-6.52679729	62.13319778	1.00	350M constraint point
ECS 100	-6.54345417	62.13493347	1.00	350M constraint point
ECS 101	-6.56011677	62.13661194	1.00	350M constraint point
ECS 102	-6.57678366	62.13824844	1.00	350M constraint point
ECS 103	-6.59345436	62.13983536	1.00	350M constraint point
ECS 104	-6.61013126	62.14137650	1.00	350M constraint point
ECS 105	-6.62680960	62.14287186	1.00	350M constraint point
ECS 106	-6.64349413	62.14431381	1.00	350M constraint point
ECS 107	-6.66018295	62.14571762	1.00	350M constraint point
ECS 108	-6.67687511	62.14706802	1.00	350M constraint point
ECS 109	-6.69356918	62.14837265	1.00	350M constraint point
ECS 110	-6.71026993	62.14962769	1.00	350M constraint point
ECS 111	-6.72697163	62.15083694	1.00	350M constraint point
ECS 112	-6.74367762	62.15199661	1.00	350M constraint point

Point ID	Latitude (decimal deg°)	Longitude (decimal deg°)	Distance (M)	Article 76 criterion
ECS 113	-6.76038742	62.15311050	1.00	350M constraint point
ECS 114	-6.77710104	62.15417862	1.00	350M constraint point
ECS 115	-6.79381657	62.15519714	1.00	350M constraint point
ECS 116	-6.81053352	62.15616989	1.00	350M constraint point
ECS 117	-6.82725430	62.15709305	1.00	350M constraint point
ECS 118	-6.84397697	62.15797043	1.00	350M constraint point
ECS 119	-6.86070347	62.15879440	1.00	350M constraint point
ECS 120	-6.87743378	62.15957642	1.00	350M constraint point
ECS 121	-6.89416361	62.16030884	1.00	350M constraint point
ECS 122	-6.90900517	62.16091919	0.89	350M constraint point/ Depth constraint point
ECS 123	-6.90996599	62.16395569	0.19	Depth constraint point
ECS 124	-6.91507578	62.17979050	0.99	Depth constraint point
ECS 125	-6.92036343	62.19556046	0.99	Depth constraint point
ECS 126	-6.92578983	62.21128845	0.99	Depth constraint point
ECS 127	-6.93133783	62.22697449	0.99	Depth constraint point
ECS 128	-6.93707371	62.24258804	0.99	Depth constraint point
ECS 129	-6.94300938	62.25812531	0.99	Depth constraint point
ECS 130	-6.94907522	62.27361298	0.99	Depth constraint point
ECS 131	-6.95524645	62.28906631	0.99	Depth constraint point
ECS 132	-6.96163750	62.30442047	0.99	Depth constraint point
ECS 133	-6.96808481	62.31975555	0.99	Depth constraint point
ECS 134	-6.97480106	62.33497620	0.99	Depth constraint point
ECS 135	-6.98154163	62.35018158	0.99	Depth constraint point
ECS 136	-6.98857641	62.36526108	0.99	Depth constraint point
ECS 137	-6.99560881	62.38033295	0.99	Depth constraint point
ECS 138	-7.00289011	62.39529037	0.99	Depth constraint point
ECS 139	-7.01027679	62.41019440	0.99	Depth constraint point
ECS 140	-7.01823092	62.42565536	1.04	Depth constraint point
ECS 141	-7.02588987	62.44042206	0.99	Depth constraint point
ECS 142	-7.03373337	62.45508575	0.99	Depth constraint point
ECS 143	-7.04173565	62.46967316	0.99	Depth constraint point
ECS 144	-7.04986811	62.48418045	0.99	Depth constraint point
ECS 145	-7.05815649	62.49859619	0.99	Depth constraint point
ECS 146	-7.06654263	62.51296234	0.99	Depth constraint point
ECS 147	-7.07516575	62.52718735	0.99	Depth constraint point
ECS 148	-7.08378887	62.54140472	0.99	Depth constraint point
ECS 149	-7.09263420	62.55549240	0.99	Depth constraint point
ECS 150	-7.10161018	62.56949234	0.99	Depth constraint point
ECS 151	-7.11077881	62.58336639	0.99	Depth constraint point
ECS 152	-7.12004757	62.59717941	0.99	Depth constraint point

Point ID	Latitude (decimal deg°)	Longitude (decimal deg°)	Distance (M)	Article 76 criterion
ECS 153	-7.12937164	62.61094666	0.99	Depth constraint point
ECS 154	-7.13896656	62.62453079	0.99	Depth constraint point
ECS 155	-7.14856005	62.63811493	0.99	Depth constraint point
ECS 156	-7.15833664	62.65156555	0.99	Depth constraint point
ECS 157	-7.16827631	62.66489792	0.99	Depth constraint point
ECS 158	-7.17833471	62.67813873	0.99	Depth constraint point
ECS 159	-7.18852806	62.69128036	0.99	Depth constraint point
ECS 160	-7.19880152	62.70435715	0.99	Depth constraint point
ECS 161	-7.20933008	62.71722412	0.99	Depth constraint point
ECS 162	-7.21988344	62.73007584	0.99	Depth constraint point
ECS 163	-7.23056412	62.74281693	0.99	Depth constraint point
ECS 164	-7.24143505	62.75539780	0.99	Depth constraint point
ECS 165	-7.25230551	62.76797867	0.99	Depth constraint point
ECS 166	-7.26338100	62.78037643	0.99	Depth constraint point
ECS 167	-7.27460098	62.79264832	0.99	Depth constraint point
ECS 168	-7.28583479	62.80490494	0.99	Depth constraint point
ECS 169	-7.29748058	62.81676102	0.99	Depth constraint point
ECS 170	-7.30936480	62.82838821	0.99	Depth constraint point
ECS 171	-7.32124853	62.84001160	0.99	Depth constraint point
ECS 172	-7.33313179	62.85163498	0.99	Depth constraint point
ECS 173	-7.34501457	62.86325836	0.99	Depth constraint point
ECS 174	-7.35689688	62.87488174	0.99	Depth constraint point
ECS 175	-7.36877918	62.88650894	0.99	Depth constraint point
ECS 176	-7.38066101	62.89813232	0.99	Depth constraint point
ECS 177	-7.39291382	62.90935898	0.99	Depth constraint point
ECS 178	-7.40541935	62.92030716	0.99	Depth constraint point
ECS 179	-7.41792488	62.93125153	0.99	Depth constraint point
ECS 180	-7.43062210	62.94197464	0.99	Depth constraint point
ECS 181	-7.44340038	62.95260239	0.99	Depth constraint point
ECS 182	-7.45620298	62.96319580	0.99	Depth constraint point
ECS 183	-7.46922255	62.97352219	0.99	Depth constraint point
ECS 184	-7.48228645	62.98379135	0.99	Depth constraint point
ECS 185	-7.49544525	62.99393845	0.99	Depth constraint point
ECS 186	-7.49586153	62.99425507	0.03	Depth constraint point
ECS 187	-7.96983242	63.34769058	35.27	Depth constraint point
ECS 188	-8.58755779	63.93876648	50.96	Depth constraint point
ECS 189	-8.59870625	63.95106888	0.99	Depth constraint point
ECS 190	-8.60985374	63.96336746	0.99	Depth constraint point
ECS 191	-8.62100220	63.97566986	0.99	Depth constraint point
ECS 192	-8.63238144	63.98775101	0.99	Depth constraint point

Point ID	Latitude (decimal deg°)	Longitude (decimal deg°)	Distance (M)	Article 76 criterion
ECS 193	-8.64388180	63.99972153	0.99	Depth constraint point
ECS 194	-8.65539169	64.01168060	0.99	Depth constraint point
ECS 195	-8.66719341	64.02334595	0.99	Depth constraint point
ECS 196	-8.67902279	64.03498840	0.99	Depth constraint point
ECS 197	-8.69090557	64.04656982	0.99	Depth constraint point
ECS 198	-8.70304775	64.05787659	0.99	Depth constraint point
ECS 199	-8.71518898	64.06918335	0.99	Depth constraint point
ECS 200	-8.72744274	64.08036804	0.99	Depth constraint point
ECS 201	-8.73987007	64.09136200	0.99	Depth constraint point
ECS 202	-8.75229645	64.10234833	0.99	Depth constraint point
ECS 203	-8.76490688	64.11312103	0.99	Depth constraint point
ECS 204	-8.77762890	64.12376404	0.99	Depth constraint point
ECS 205	-8.79039097	64.13435364	0.99	Depth constraint point
ECS 206	-8.80331135	64.14475250	0.99	Depth constraint point
ECS 207	-8.81631756	64.15503693	0.99	Depth constraint point
ECS 208	-8.82944393	64.16516876	0.99	Depth constraint point
ECS 209	-8.84262371	64.17522430	0.99	Depth constraint point
ECS 210	-8.85595703	64.18508148	0.99	Depth constraint point
ECS 211	-8.86939907	64.19478607	0.99	Depth constraint point
ECS 212	-8.88284016	64.20448303	0.99	Depth constraint point
ECS 213	-8.89646626	64.21392059	0.99	Depth constraint point
ECS 214	-8.91013527	64.22328949	0.99	Depth constraint point
ECS 215	-8.92396545	64.23241425	0.99	Depth constraint point
ECS 216	-8.93795586	64.24129486	0.99	Depth constraint point
ECS 217	-8.95194626	64.25017548	0.99	Depth constraint point
ECS 218	-8.96593571	64.25905609	0.99	Depth constraint point
ECS 219	-8.97992420	64.26792908	0.99	Depth constraint point
ECS 220	-8.99407101	64.27655029	0.99	Depth constraint point
ECS 221	-9.00835133	64.28494263	0.99	Depth constraint point
ECS 222	-9.02272511	64.29317474	0.99	Depth constraint point
ECS 223	-9.03716373	64.30128479	0.99	Depth constraint point
ECS 224	-9.05166817	64.30928040	0.99	Depth constraint point
ECS 225	-9.05780029	64.31259155	0.42	Depth constraint point
ECS 226	-9.70979118	64.65947723	44.04	Depth constraint point
ECS 227	-9.72439289	64.66723633	0.99	Depth constraint point
ECS 228	-9.73910809	64.67476654	0.99	Depth constraint point
ECS 229	-9.75384045	64.68226624	0.99	Depth constraint point
ECS 230	-9.76865673	64.68959808	0.99	Depth constraint point
ECS 231	-9.78352833	64.69680786	0.99	Depth constraint point
ECS 232	-9.79851151	64.70377350	0.99	Depth constraint point

Point ID	Latitude (decimal deg°)	Longitude (decimal deg°)	Distance (M)	Article 76 criterion
ECS 233	-9.81354713	64.71063232	0.99	Depth constraint point
ECS 234	-9.82862091	64.71739197	0.99	Depth constraint point
ECS 235	-9.84379196	64.72393799	0.99	Depth constraint point
ECS 236	-9.85899067	64.73040771	0.99	Depth constraint point
ECS 237	-9.87441635	64.73631287	0.99	Depth constraint point
ECS 238	-9.88984680	64.74219513	0.99	Depth constraint point
ECS 239	-9.90527725	64.74807739	0.99	Depth constraint point
ECS 240	-9.92070580	64.75395966	0.99	Depth constraint point
ECS 241	-9.93620110	64.75966644	0.99	Depth constraint point
ECS 242	-9.95171452	64.76531982	0.99	Depth constraint point
ECS 243	-9.96722507	64.77097321	0.98	Depth constraint point
ECS 244	-9.98284340	64.77631378	0.98	Depth constraint point
ECS 245	-9.99857426	64.78131104	0.98	Depth constraint point
ECS 246	-10.01432419	64.78623962	0.98	Depth constraint point
ECS 247	-10.03013229	64.79096985	0.98	Depth constraint point
ECS 248	-10.04597759	64.79557800	0.98	Depth constraint point
ECS 249	-10.06191826	64.79982758	0.98	Depth constraint point
ECS 250	-10.07788658	64.80397797	0.98	Depth constraint point
ECS 251	-10.09385204	64.80812073	0.98	Depth constraint point
ECS 252	-10.10981941	64.81226349	0.98	Depth constraint point
ECS 253	-10.12587929	64.81601715	0.98	Depth constraint point
ECS 254	-10.14196205	64.81966400	0.98	Depth constraint point
ECS 255	-10.15808487	64.82312012	0.98	Depth constraint point
ECS 256	-10.17422962	64.82647705	0.98	Depth constraint point
ECS 257	-10.19042587	64.82955170	0.98	Depth constraint point
ECS 258	-10.20663643	64.83255768	0.98	Depth constraint point
ECS 259	-10.22290897	64.83517456	0.98	Depth constraint point
ECS 260	-10.23921394	64.83758545	0.98	Depth constraint point
ECS 261	-10.25551796	64.84000397	0.98	Depth constraint point
ECS 262	-10.27182102	64.84241486	0.98	Depth constraint point
ECS 263	-10.28812313	64.84482574	0.98	Depth constraint point
ECS 264	-10.30444908	64.84706879	0.98	Depth constraint point
ECS 265	-10.32082558	64.84888458	0.98	Depth constraint point
ECS 266	-10.33721066	64.85060883	0.98	Depth constraint point
ECS 267	-10.35361671	64.85209656	0.98	Depth constraint point
ECS 268	-10.37002945	64.85350037	0.98	Depth constraint point
ECS 269	-10.38646126	64.85465240	0.98	Depth constraint point
ECS 270	-10.40289688	64.85572815	0.98	Depth constraint point
ECS 271	-10.41934681	64.85655975	0.98	Depth constraint point
ECS 272	-10.43579769	64.85731506	0.98	Depth constraint point

Point ID	Latitude (decimal deg°)	Longitude (decimal deg°)	Distance (M)	Article 76 criterion
ECS 273	-10.45225811	64.85781097	0.98	Depth constraint point
ECS 274	-10.46871948	64.85825348	0.98	Depth constraint point
ECS 275	-10.48518372	64.85841370	0.98	Depth constraint point
ECS 276	-10.49034309	64.85845184	0.31	Depth constraint point / 60 M distance criterion
ECS 277	-10.50459099	64.85011292	0.98	60 M distance criterion
ECS 278	-10.51866913	64.84148407	0.98	60 M distance criterion
ECS 279	-10.53257847	64.83258820	0.98	60 M distance criterion
ECS 280	-10.54637241	64.82350159	0.98	60 M distance criterion
ECS 281	-10.55698586	64.81651306	0.76	60 M distance criterion
ECS 282	-11.52409267	64.56047821	59.71	60 M distance criterion
ECS 283	-11.54041672	64.56215668	0.98	60 M distance criterion
ECS 284	-11.55674744	64.56372070	0.98	60 M distance criterion
ECS 285	-11.57311153	64.56489563	0.98	60 M distance criterion
ECS 286	-11.58948135	64.56593323	0.98	60 M distance criterion
ECS 287	-11.60587311	64.56656647	0.98	60 M distance criterion
ECS 288	-11.62226677	64.56704712	0.98	60 M distance criterion
ECS 289	-11.63866615	64.56697083	0.98	60 M distance criterion
ECS 290	-11.65506458	64.56675720	0.98	60 M distance criterion
ECS 291	-11.67146206	64.56653595	0.98	60 M distance criterion
ECS 292	-11.68785000	64.56603241	0.98	60 M distance criterion
ECS 293	-11.70421886	64.56507874	0.98	60 M distance criterion
ECS 294	-11.72057247	64.56390381	0.98	60 M distance criterion
ECS 295	-11.73690224	64.56241608	0.98	60 M distance criterion
ECS 296	-11.75320530	64.56068420	0.98	60 M distance criterion
ECS 297	-11.76947689	64.55867004	0.98	60 M distance criterion
ECS 298	-11.78572559	64.55648041	0.98	60 M distance criterion
ECS 299	-11.80191517	64.55387878	0.98	60 M distance criterion
ECS 300	-11.81805992	64.55101776	0.98	60 M distance criterion
ECS 301	-11.83416557	64.54793549	0.98	60 M distance criterion
ECS 302	-11.83733463	64.54726410	0.19	60 M distance criterion
ECS 303	-11.85261917	64.54416656	0.93	60 M distance criterion / Depth constraint point
ECS 304	-11.86069202	64.54158783	0.51	Depth constraint point
ECS 305	-11.87630749	64.53654480	0.98	Depth constraint point
ECS 306	-11.89189434	64.53141785	0.98	Depth constraint point
ECS 307	-11.90740204	64.52604675	0.98	Depth constraint point
ECS 308	-11.92288780	64.52062225	0.98	Depth constraint point
ECS 309	-11.93828201	64.51493073	0.98	Depth constraint point
ECS 310	-11.95366669	64.50920868	0.98	Depth constraint point
ECS 311	-11.96895790	64.50325012	0.98	Depth constraint point

Point ID	Latitude (decimal deg°)	Longitude (decimal deg°)	Distance (M)	Article 76 criterion
ECS 312	-11.98421669	64.49719238	0.98	Depth constraint point
ECS 313	-11.99936485	64.49087524	0.98	Depth constraint point
ECS 314	-12.01451111	64.48454285	0.98	Depth constraint point
ECS 315	-12.02954006	64.47793579	0.98	Depth constraint point
ECS 316	-12.04455280	64.47129059	0.98	Depth constraint point
ECS 317	-12.05947399	64.46443176	0.98	Depth constraint point
ECS 318	-12.07433414	64.45745087	0.98	Depth constraint point
ECS 319	-12.08911228	64.45028687	0.98	Depth constraint point
ECS 320	-12.10382843	64.44299316	0.98	Depth constraint point
ECS 321	-12.11851120	64.43563843	0.98	Depth constraint point
ECS 322	-12.13305855	64.42800903	0.98	Depth constraint point
ECS 323	-12.14757252	64.42031860	0.98	Depth constraint point
ECS 324	-12.16196156	64.41238403	0.98	Depth constraint point
ECS 325	-12.17634964	64.40445709	0.98	Depth constraint point
ECS 326	-12.19058418	64.39624023	0.98	Depth constraint point
ECS 327	-12.20479107	64.38798523	0.98	Depth constraint point
ECS 328	-12.21888733	64.37953186	0.98	Depth constraint point
ECS 329	-12.22777843	64.37413025	0.62	Depth constraint point / 60 M distance criterion
ECS 330	-12.24094582	64.36425781	0.98	60 M distance criterion
ECS 331	-12.25398064	64.35419464	0.98	60 M distance criterion
ECS 332	-12.26677513	64.34382629	0.98	60 M distance criterion
ECS 333	-12.27948284	64.33335114	0.98	60 M distance criterion
ECS 334	-12.29204082	64.32268524	0.98	60 M distance criterion
ECS 335	-12.30427361	64.31163788	0.98	60 M distance criterion
ECS 336	-12.31650639	64.30059814	0.98	60 M distance criterion
ECS 337	-12.32846546	64.28924561	0.98	60 M distance criterion
ECS 338	-12.34021187	64.27767181	0.98	60 M distance criterion
ECS 339	-12.35195637	64.26609039	0.98	60 M distance criterion
ECS 340	-12.36329174	64.25409698	0.98	60 M distance criterion
ECS 341	-12.37451077	64.24199677	0.98	60 M distance criterion
ECS 342	-12.38570881	64.22986603	0.98	60 M distance criterion
ECS 343	-12.39640236	64.21727753	0.98	60 M distance criterion
ECS 344	-12.40708447	64.20468140	0.98	60 M distance criterion
ECS 345	-12.41761875	64.19195557	0.98	60 M distance criterion
ECS 346	-12.42774677	64.17889404	0.98	60 M distance criterion
ECS 347	-12.43786144	64.16582489	0.98	60 M distance criterion
ECS 348	-12.44763660	64.15248871	0.98	60 M distance criterion
ECS 349	-12.45722103	64.13900757	0.98	60 M distance criterion
ECS 350	-12.46651936	64.12532806	0.98	60 M distance criterion
ECS 351	-12.47565269	64.11152649	0.98	60 M distance criterion

Point ID	Latitude (decimal deg°)	Longitude (decimal deg°)	Distance (M)	Article 76 criterion
ECS 352	-12.48465252	64.09764099	0.98	60 M distance criterion
ECS 353	-12.49325371	64.08349609	0.98	60 M distance criterion
ECS 354	-12.50185490	64.06934357	0.98	60 M distance criterion
ECS 355	-12.51006317	64.05496216	0.98	60 M distance criterion
ECS 356	-12.51811695	64.04048157	0.98	60 M distance criterion
ECS 357	-12.52579689	64.02579498	0.98	60 M distance criterion
ECS 358	-12.53335190	64.01103973	0.98	60 M distance criterion
ECS 359	-12.54072475	63.99619675	0.98	60 M distance criterion
ECS 360	-12.54777336	63.98118591	0.98	60 M distance criterion
ECS 361	-12.55458832	63.96606827	0.98	60 M distance criterion
ECS 362	-12.56110001	63.95080566	0.98	60 M distance criterion
ECS 363	-12.56753540	63.93551636	0.98	60 M distance criterion
ECS 364	-12.57355022	63.92004776	0.98	60 M distance criterion
ECS 365	-12.57945824	63.90453339	0.98	60 M distance criterion
ECS 366	-12.58494759	63.88886642	0.98	60 M distance criterion
ECS 367	-12.59038925	63.87317657	0.98	60 M distance criterion
ECS 368	-12.59536552	63.85733032	0.98	60 M distance criterion
ECS 369	-12.60031033	63.84147644	0.98	60 M distance criterion
ECS 370	-12.60260677	63.83364105	0.48	60 M distance criterion
ECS 371	-13.45272923	63.29983139	59.64	60 M distance criterion
ECS 372	-13.46877384	63.30266571	0.97	60 M distance criterion
ECS 373	-13.48485184	63.30528259	0.97	60 M distance criterion
ECS 374	-13.50096798	63.30764389	0.97	60 M distance criterion
ECS 375	-13.51712418	63.30968475	0.97	60 M distance criterion
ECS 376	-13.53329754	63.31155777	0.97	60 M distance criterion
ECS 377	-13.54950714	63.31306839	0.97	60 M distance criterion
ECS 378	-13.56573009	63.31440735	0.97	60 M distance criterion
ECS 379	-13.58197784	63.31537628	0.97	60 M distance criterion
ECS 380	-13.59823227	63.31617355	0.97	60 M distance criterion
ECS 381	-13.61449909	63.31661224	0.97	60 M distance criterion
ECS 382	-13.63076782	63.31686401	0.97	60 M distance criterion
ECS 383	-13.64703846	63.31676483	0.97	60 M distance criterion
ECS 384	-13.66330433	63.31647110	0.97	60 M distance criterion
ECS 385	-13.67956066	63.31584549	0.97	60 M distance criterion
ECS 386	-13.69580555	63.31501007	0.97	60 M distance criterion
ECS 387	-13.71203232	63.31383896	0.97	60 M distance criterion
ECS 388	-13.72824001	63.31246567	0.97	60 M distance criterion
ECS 389	-13.74441910	63.31076813	0.97	60 M distance criterion
ECS 390	-13.76057529	63.30887604	0.97	60 M distance criterion
ECS 391	-13.77669621	63.30670166	0.97	60 M distance criterion

Point ID	Latitude (decimal deg°)	Longitude (decimal deg°)	Distance (M)	Article 76 criterion
ECS 392	-13.79276752	63.30417633	0.97	60 M distance criterion
ECS 393	-13.80879974	63.30140686	0.97	60 M distance criterion
ECS 394	-13.82479477	63.29843140	0.97	60 M distance criterion
ECS 395	-13.84072685	63.29512405	0.97	60 M distance criterion
ECS 396	-13.85661793	63.29162598	0.97	60 M distance criterion
ECS 397	-13.87243462	63.28778839	0.97	60 M distance criterion
ECS 398	-13.88820744	63.28377914	0.97	60 M distance criterion
ECS 399	-13.90388966	63.27940750	0.97	60 M distance criterion
ECS 400	-13.91954517	63.27494431	0.97	60 M distance criterion
ECS 401	-13.93507481	63.27004623	0.97	60 M distance criterion
ECS 402	-13.95054817	63.26497269	0.97	60 M distance criterion
ECS 403	-13.96590328	63.25953293	0.97	60 M distance criterion
ECS 404	-13.98124027	63.25404358	0.97	60 M distance criterion
ECS 405	-13.99640083	63.24806595	0.97	60 M distance criterion
ECS 406	-14.00289249	63.24563217	0.41	60 M distance criterion
ECS 407	-15.00692177	63.23084259	59.99	60 M distance criterion
ECS 408	-15.01514149	63.23374176	0.52	60 M distance criterion
ECS 409	-15.03043652	63.23913193	0.97	60 M distance criterion
ECS 410	-15.04582310	63.24423981	0.97	60 M distance criterion
ECS 411	-15.06126881	63.24914932	0.97	60 M distance criterion
ECS 412	-15.07679749	63.25376892	0.97	60 M distance criterion
ECS 413	-15.09239864	63.25812149	0.97	60 M distance criterion
ECS 414	-15.10807133	63.26218796	0.97	60 M distance criterion
ECS 415	-15.12378788	63.26606750	0.97	60 M distance criterion
ECS 416	-15.13957787	63.26961136	0.97	60 M distance criterion
ECS 417	-15.15540314	63.27297211	0.97	60 M distance criterion
ECS 418	-15.17129326	63.27598953	0.97	60 M distance criterion
ECS 419	-15.18721390	63.27882004	0.97	60 M distance criterion
ECS 420	-15.20318699	63.28131104	0.97	60 M distance criterion
ECS 421	-15.21918583	63.28361130	0.97	60 M distance criterion
ECS 422	-15.23522568	63.28558350	0.97	60 M distance criterion
ECS 423	-15.25128078	63.28739929	0.97	60 M distance criterion
ECS 424	-15.26736832	63.28886795	0.96	60 M distance criterion
ECS 425	-15.28347969	63.29000854	0.96	60 M distance criterion
ECS 426	-15.29960346	63.29092789	0.96	60 M distance criterion
ECS 427	-15.31573677	63.29160690	0.96	60 M distance criterion
ECS 428	-15.33187771	63.29200363	0.96	60 M distance criterion
ECS 429	-15.34802055	63.29213333	0.96	60 M distance criterion
ECS 430	-15.36416340	63.29200745	0.96	60 M distance criterion
ECS 431	-15.38029957	63.29158783	0.96	60 M distance criterion

Point ID	Latitude (decimal deg°)	Longitude (decimal deg°)	Distance (M)	Article 76 criterion
ECS 432	-15.39642811	63.29093933	0.96	60 M distance criterion
ECS 433	-15.41253948	63.28997803	0.96	60 M distance criterion
ECS 434	-15.42863750	63.28879929	0.96	60 M distance criterion
ECS 435	-15.44470882	63.28731918	0.96	60 M distance criterion
ECS 436	-15.46075916	63.28560638	0.96	60 M distance criterion
ECS 437	-15.47676945	63.28355789	0.96	60 M distance criterion
ECS 438	-15.49275780	63.28133392	0.96	60 M distance criterion
ECS 439	-15.50869370	63.27875137	0.96	60 M distance criterion
ECS 440	-15.52460384	63.27600479	0.96	60 M distance criterion
ECS 441	-15.54044628	63.27289581	0.96	60 M distance criterion
ECS 442	-15.55626011	63.26962280	0.96	60 M distance criterion
ECS 443	-15.57199669	63.26598740	0.96	60 M distance criterion
ECS 444	-15.58769703	63.26219177	0.96	60 M distance criterion
ECS 445	-15.60332775	63.25811386	0.96	60 M distance criterion
ECS 446	-15.61889553	63.25378418	0.96	60 M distance criterion
ECS 447	-15.63435459	63.24906158	0.96	60 M distance criterion
ECS 448	-15.64977837	63.24422073	0.96	60 M distance criterion
ECS 449	-15.66510105	63.23905945	0.96	60 M distance criterion
ECS 450	-15.68035793	63.23369598	0.96	60 M distance criterion
ECS 451	-15.69553375	63.22809601	0.96	60 M distance criterion
ECS 452	-15.71062279	63.22225189	0.96	60 M distance criterion
ECS 453	-15.72556782	63.21602631	0.96	60 M distance criterion
ECS 454	-15.74043655	63.20961761	0.96	60 M distance criterion
ECS 455	-15.75523472	63.20303726	0.96	60 M distance criterion
ECS 456	-15.76987743	63.19609833	0.96	60 M distance criterion
ECS 457	-15.78447914	63.18907547	0.96	60 M distance criterion
ECS 458	-15.79887676	63.18161011	0.96	60 M distance criterion
ECS 459	-15.81327248	63.17414856	0.96	60 M distance criterion
ECS 460	-15.82742310	63.16619873	0.96	60 M distance criterion
ECS 461	-15.84156418	63.15823746	0.96	60 M distance criterion
ECS 462	-15.85544777	63.14980698	0.96	60 M distance criterion
ECS 463	-15.86928558	63.14130020	0.96	60 M distance criterion
ECS 464	-15.88301182	63.13260651	0.96	60 M distance criterion
ECS 465	-15.89663400	63.12362140	0.97	60 M distance criterion / Baseline + 200M

SMS-ES-ANNEX 2_R

Table listing the fixed points defining the outer limit of the extended continental shelf (Degrees, Minutes, Seconds)

Point ID	Latitude (deg°min'sec")	Longitude (deg°min'sec")	Distance (M)	Article 76 criterion
ECS 1	4° 50' 18.28" S	59° 16' 57.13" E	-	60 M distance criterion / Baseline +200M
ECS 2	4° 50' 37.68" S	59° 17' 53.74" E	1.00	60 M distance criterion
ECS 3	4° 50' 57.66" S	59° 18' 50.22" E	1.00	60 M distance criterion
ECS 4	4° 51' 19.2" S	59° 19' 46.13" E	1.00	60 M distance criterion
ECS 5	4° 51' 41.03" S	59° 20' 41.91" E	1.00	60 M distance criterion
ECS 6	4° 52' 4.14" S	59° 21' 37.2" E	1.00	60 M distance criterion
ECS 7	4° 52' 27.95" S	59° 22' 32.2" E	1.00	60 M distance criterion
ECS 8	4° 52' 52.51" S	59° 23' 26.84" E	1.00	60 M distance criterion
ECS 9	4° 53' 18.39" S	59° 24' 20.88" E	1.00	60 M distance criterion
ECS 10	4° 53' 44.93" S	59° 25' 14.62" E	1.00	60 M distance criterion
ECS 11	4° 54' 12.64" S	59° 26' 7.76" E	1.00	60 M distance criterion
ECS 12	4° 54' 40.49" S	59° 27' 0.81" E	1.00	60 M distance criterion
ECS 13	4° 55' 10.1" S	59° 27' 52.93" E	1.00	60 M distance criterion
ECS 14	4° 55' 39.88" S	59° 28' 44.95" E	1.00	60 M distance criterion
ECS 15	4° 56' 11.14" S	59° 29' 36.09" E	1.00	60 M distance criterion
ECS 16	4° 56' 42.56" S	59° 30' 27.14" E	1.00	60 M distance criterion
ECS 17	4° 57' 15.64" S	59° 31' 17.12" E	1.00	60 M distance criterion
ECS 18	4° 57' 49.17" S	59° 32' 6.81" E	1.00	60 M distance criterion
ECS 19	4° 58' 23.02" S	59° 32' 56.29" E	1.00	60 M distance criterion
ECS 20	4° 58' 58.33" S	59° 33' 44.74" E	1.00	60 M distance criterion
ECS 21	4° 59' 34.11" S	59° 34' 32.86" E	1.00	60 M distance criterion
ECS 22	5° 0' 10.93" S	59° 35' 20.17" E	1.00	60 M distance criterion
ECS 23	5° 0' 48.25" S	59° 36' 7.08" E	1.00	60 M distance criterion
ECS 24	5° 1' 26.66" S	59° 36' 53.13" E	1.00	60 M distance criterion
ECS 25	5° 2' 5.84" S	59° 37' 38.53" E	1.00	60 M distance criterion
ECS 26	5° 2' 45.28" S	59° 38' 23.7" E	1.00	60 M distance criterion
ECS 27	5° 3' 26.19" S	59° 39' 7.54" E	1.00	60 M distance criterion
ECS 28	5° 4' 7.39" S	59° 39' 51.12" E	1.00	60 M distance criterion
ECS 29	5° 4' 48.99" S	59° 40' 34.31" E	1.00	60 M distance criterion
ECS 30	5° 5' 32.12" S	59° 41' 16" E	1.00	60 M distance criterion
ECS 31	5° 6' 15.23" S	59° 41' 57.68" E	1.00	60 M distance criterion
ECS 32	5° 6' 59.19" S	59° 42' 38.5" E	1.00	60 M distance criterion
ECS 33	5° 7' 44.15" S	59° 43' 18.21" E	1.00	60 M distance criterion

Point ID	Latitude (deg°min'sec")	Longitude (deg°min'sec")	Distance (M)	Article 76 criterion
ECS 34	5° 8' 29.14" S	59° 43' 57.87" E	1.00	60 M distance criterion
ECS 35	5° 9' 15.24" S	59° 44' 36.23" E	1.00	60 M distance criterion
ECS 36	5° 10' 1.96" S	59° 45' 13.86" E	1.00	60 M distance criterion
ECS 37	5° 10' 49.19" S	59° 45' 50.84" E	1.00	60 M distance criterion
ECS 38	5° 11' 36.95" S	59° 46' 27.15" E	1.00	60 M distance criterion
ECS 39	5° 12' 25.43" S	59° 47' 2.48" E	1.00	60 M distance criterion
ECS 40	5° 13' 14.84" S	59° 47' 36.51" E	1.00	60 M distance criterion
ECS 41	5° 14' 4.23" S	59° 48' 10.57" E	1.00	60 M distance criterion
ECS 42	5° 14' 54.53" S	59° 48' 43.27" E	1.00	60 M distance criterion
ECS 43	5° 15' 45.22" S	59° 49' 15.35" E	1.00	60 M distance criterion
ECS 44	5° 16' 36.28" S	59° 49' 46.87" E	1.00	60 M distance criterion
ECS 45	5° 17' 27.93" S	59° 50' 17.4" E	1.00	60 M distance criterion
ECS 46	5° 18' 20.87" S	59° 50' 48.02" E	1.02	60 M distance criterion
ECS 47	6° 11' 2.23" S	60° 18' 55.93" E	59.46	60 M distance criterion
ECS 48	6° 9' 3.68" S	61° 19' 6.99" E	59.98	60 M distance criterion
ECS 49	6° 9' 2.61" S	61° 19' 33.24" E	0.44	60 M distance criterion
ECS 50	6° 9' 1.16" S	61° 20' 33.46" E	1.00	60 M distance criterion
ECS 51	6° 9' 0.72" S	61° 21' 33.7" E	1.00	60 M distance criterion
ECS 52	6° 9' 1.28" S	61° 22' 33.93" E	1.00	60 M distance criterion
ECS 53	6° 9' 2.85" S	61° 23' 34.13" E	1.00	60 M distance criterion
ECS 54	6° 9' 5.42" S	61° 24' 34.32" E	1.00	60 M distance criterion
ECS 55	6° 9' 8.99" S	61° 25' 34.46" E	1.00	60 M distance criterion
ECS 56	6° 9' 13.57" S	61° 26' 34.53" E	1.00	60 M distance criterion
ECS 57	6° 9' 19.13" S	61° 27' 34.5" E	1.00	60 M distance criterion
ECS 58	6° 9' 25.69" S	61° 28' 34.38" E	1.00	60 M distance criterion
ECS 59	6° 9' 33.26" S	61° 29' 34.14" E	1.00	60 M distance criterion
ECS 60	6° 9' 41.81" S	61° 30' 33.77" E	1.00	60 M distance criterion
ECS 61	6° 9' 51.37" S	61° 31' 33.25" E	1.00	60 M distance criterion
ECS 62	6° 10' 1.9" S	61° 32' 32.57" E	1.00	60 M distance criterion
ECS 63	6° 10' 13.43" S	61° 33' 31.71" E	1.00	60 M distance criterion
ECS 64	6° 10' 25.94" S	61° 34' 30.62" E	1.00	60 M distance criterion
ECS 65	6° 10' 39.42" S	61° 35' 29.34" E	1.00	60 M distance criterion
ECS 66	6° 10' 53.88" S	61° 36' 27.8" E	1.00	60 M distance criterion
ECS 67	6° 11' 9.31" S	61° 37' 26.04" E	1.00	60 M distance criterion
ECS 68	6° 11' 25.71" S	61° 38' 24.03" E	1.00	60 M distance criterion
ECS 69	6° 11' 43.07" S	61° 39' 21.72" E	1.00	60 M distance criterion
ECS 70	6° 12' 1.39" S	61° 40' 19.09" E	1.00	60 M distance criterion
ECS 71	6° 12' 20.66" S	61° 41' 16.18" E	1.00	60 M distance criterion
ECS 72	6° 12' 40.89" S	61° 42' 12.94" E	1.00	60 M distance criterion
ECS 73	6° 13' 2.05" S	61° 43' 9.35" E	1.00	60 M distance criterion

Point ID	Latitude (deg°min'sec")	Longitude (deg°min'sec")	Distance (M)	Article 76 criterion
ECS 74	6° 13' 24.15" S	61° 44' 5.41" E	1.00	60 M distance criterion
ECS 75	6° 13' 47.18" S	61° 45' 1.08" E	1.00	60 M distance criterion
ECS 76	6° 14' 11.14" S	61° 45' 56.39" E	1.00	60 M distance criterion
ECS 77	6° 14' 36" S	61° 46' 51.26" E	1.00	60 M distance criterion
ECS 78	6° 15' 1.79" S	61° 47' 45.72" E	1.00	60 M distance criterion
ECS 79	6° 15' 28.47" S	61° 48' 39.74" E	1.00	60 M distance criterion
ECS 80	6° 15' 56.04" S	61° 49' 33.31" E	1.00	60 M distance criterion
ECS 81	6° 16' 24.52" S	61° 50' 26.43" E	1.00	60 M distance criterion
ECS 82	6° 16' 53.86" S	61° 51' 19.07" E	1.00	60 M distance criterion
ECS 83	6° 17' 24.08" S	61° 52' 11.2" E	1.00	60 M distance criterion
ECS 84	6° 17' 55.16" S	61° 53' 2.82" E	1.00	60 M distance criterion
ECS 85	6° 18' 27.1" S	61° 53' 53.94" E	1.00	60 M distance criterion
ECS 86	6° 18' 59.89" S	61° 54' 44.5" E	1.00	60 M distance criterion
ECS 87	6° 19' 33.51" S	61° 55' 34.53" E	1.00	60 M distance criterion
ECS 88	6° 20' 7.96" S	61° 56' 23.98" E	1.00	60 M distance criterion
ECS 89	6° 20' 43.22" S	61° 57' 12.84" E	1.00	60 M distance criterion
ECS 90	6° 21' 19.3" S	61° 58' 1.13" E	1.00	60 M distance criterion
ECS 91	6° 21' 56.18" S	61° 58' 48.79" E	1.00	60 M distance criterion
ECS 92	6° 22' 33.84" S	61° 59' 35.84" E	1.00	60 M distance criterion
ECS 93	6° 23' 12.29" S	62° 0' 22.29" E	1.00	60 M distance criterion
ECS 94	6° 26' 52.97" S	62° 7' 27.79" E	7.95	60 M chord/ 350M constraint point
ECS 95	6° 27' 36.79" S	62° 7' 32.9" E	0.73	350M constraint point
ECS 96	6° 28' 36.68" S	62° 7' 39.81" E	1.00	350M constraint point
ECS 97	6° 29' 36.59" S	62° 7' 46.55" E	1.00	350M constraint point
ECS 98	6° 30' 36.52" S	62° 7' 53.13" E	1.00	350M constraint point
ECS 99	6° 31' 36.47" S	62° 7' 59.51" E	1.00	350M constraint point
ECS 100	6° 32' 36.44" S	62° 8' 5.76" E	1.00	350M constraint point
ECS 101	6° 33' 36.42" S	62° 8' 11.8" E	1.00	350M constraint point
ECS 102	6° 34' 36.42" S	62° 8' 17.69" E	1.00	350M constraint point
ECS 103	6° 35' 36.44" S	62° 8' 23.41" E	1.00	350M constraint point
ECS 104	6° 36' 36.47" S	62° 8' 28.96" E	1.00	350M constraint point
ECS 105	6° 37' 36.51" S	62° 8' 34.34" E	1.00	350M constraint point
ECS 106	6° 38' 36.58" S	62° 8' 39.53" E	1.00	350M constraint point
ECS 107	6° 39' 36.66" S	62° 8' 44.58" E	1.00	350M constraint point
ECS 108	6° 40' 36.75" S	62° 8' 49.44" E	1.00	350M constraint point
ECS 109	6° 41' 36.85" S	62° 8' 54.14" E	1.00	350M constraint point
ECS 110	6° 42' 36.97" S	62° 8' 58.66" E	1.00	350M constraint point
ECS 111	6° 43' 37.1" S	62° 9' 3.01" E	1.00	350M constraint point
ECS 112	6° 44' 37.24" S	62° 9' 7.19" E	1.00	350M constraint point
ECS 113	6° 45' 37.39" S	62° 9' 11.2" E	1.00	350M constraint point

Point ID	Latitude (deg°min'sec")	Longitude (deg°min'sec")	Distance (M)	Article 76 criterion
ECS 114	6° 46' 37.56" S	62° 9' 15.04" E	1.00	350M constraint point
ECS 115	6° 47' 37.74" S	62° 9' 18.71" E	1.00	350M constraint point
ECS 116	6° 48' 37.92" S	62° 9' 22.21" E	1.00	350M constraint point
ECS 117	6° 49' 38.12" S	62° 9' 25.53" E	1.00	350M constraint point
ECS 118	6° 50' 38.32" S	62° 9' 28.69" E	1.00	350M constraint point
ECS 119	6° 51' 38.53" S	62° 9' 31.66" E	1.00	350M constraint point
ECS 120	6° 52' 38.76" S	62° 9' 34.48" E	1.00	350M constraint point
ECS 121	6° 53' 38.99" S	62° 9' 37.11" E	1.00	350M constraint point
ECS 122	6° 54' 32.42" S	62° 9' 39.31" E	0.89	350M constraint point/ Depth constraint point
ECS 123	6° 54' 35.88" S	62° 9' 50.24" E	0.19	Depth constraint point
ECS 124	6° 54' 54.27" S	62° 10' 47.25" E	0.99	Depth constraint point
ECS 125	6° 55' 13.31" S	62° 11' 44.02" E	0.99	Depth constraint point
ECS 126	6° 55' 32.84" S	62° 12' 40.64" E	0.99	Depth constraint point
ECS 127	6° 55' 52.82" S	62° 13' 37.11" E	0.99	Depth constraint point
ECS 128	6° 56' 13.47" S	62° 14' 33.32" E	0.99	Depth constraint point
ECS 129	6° 56' 34.83" S	62° 15' 29.25" E	0.99	Depth constraint point
ECS 130	6° 56' 56.67" S	62° 16' 25.01" E	0.99	Depth constraint point
ECS 131	6° 57' 18.89" S	62° 17' 20.64" E	0.99	Depth constraint point
ECS 132	6° 57' 41.89" S	62° 18' 15.91" E	0.99	Depth constraint point
ECS 133	6° 58' 5.11" S	62° 19' 11.12" E	0.99	Depth constraint point
ECS 134	6° 58' 29.28" S	62° 20' 5.91" E	0.99	Depth constraint point
ECS 135	6° 58' 53.55" S	62° 21' 0.65" E	0.99	Depth constraint point
ECS 136	6° 59' 18.88" S	62° 21' 54.94" E	0.99	Depth constraint point
ECS 137	6° 59' 44.19" S	62° 22' 49.2" E	0.99	Depth constraint point
ECS 138	7° 0' 10.4" S	62° 23' 43.05" E	0.99	Depth constraint point
ECS 139	7° 0' 37" S	62° 24' 36.7" E	0.99	Depth constraint point
ECS 140	7° 1' 5.63" S	62° 25' 32.36" E	1.04	Depth constraint point
ECS 141	7° 1' 33.2" S	62° 26' 25.52" E	0.99	Depth constraint point
ECS 142	7° 2' 1.44" S	62° 27' 18.31" E	0.99	Depth constraint point
ECS 143	7° 2' 30.25" S	62° 28' 10.82" E	0.99	Depth constraint point
ECS 144	7° 2' 59.53" S	62° 29' 3.05" E	0.99	Depth constraint point
ECS 145	7° 3' 29.37" S	62° 29' 54.95" E	0.99	Depth constraint point
ECS 146	7° 3' 59.56" S	62° 30' 46.66" E	0.99	Depth constraint point
ECS 147	7° 4' 30.59" S	62° 31' 37.87" E	0.99	Depth constraint point
ECS 148	7° 5' 1.64" S	62° 32' 29.06" E	0.99	Depth constraint point
ECS 149	7° 5' 33.48" S	62° 33' 19.77" E	0.99	Depth constraint point
ECS 150	7° 6' 5.8" S	62° 34' 10.17" E	0.99	Depth constraint point
ECS 151	7° 6' 38.8" S	62° 35' 0.12" E	0.99	Depth constraint point
ECS 152	7° 7' 12.17" S	62° 35' 49.85" E	0.99	Depth constraint point
ECS 153	7° 7' 45.73" S	62° 36' 39.41" E	0.99	Depth constraint point

Point ID	Latitude (deg°min'sec")	Longitude (deg°min'sec")	Distance (M)	Article 76 criterion
ECS 154	7° 8' 20.28" S	62° 37' 28.31" E	0.99	Depth constraint point
ECS 155	7° 8' 54.81" S	62° 38' 17.21" E	0.99	Depth constraint point
ECS 156	7° 9' 30.01" S	62° 39' 5.64" E	0.99	Depth constraint point
ECS 157	7° 10' 5.79" S	62° 39' 53.63" E	0.99	Depth constraint point
ECS 158	7° 10' 42.01" S	62° 40' 41.3" E	0.99	Depth constraint point
ECS 159	7° 11' 18.7" S	62° 41' 28.61" E	0.99	Depth constraint point
ECS 160	7° 11' 55.69" S	62° 42' 15.69" E	0.99	Depth constraint point
ECS 161	7° 12' 33.59" S	62° 43' 2.01" E	0.99	Depth constraint point
ECS 162	7° 13' 11.58" S	62° 43' 48.27" E	0.99	Depth constraint point
ECS 163	7° 13' 50.03" S	62° 44' 34.14" E	0.99	Depth constraint point
ECS 164	7° 14' 29.16" S	62° 45' 19.43" E	0.99	Depth constraint point
ECS 165	7° 15' 8.3" S	62° 46' 4.72" E	0.99	Depth constraint point
ECS 166	7° 15' 48.17" S	62° 46' 49.36" E	0.99	Depth constraint point
ECS 167	7° 16' 28.56" S	62° 47' 33.53" E	0.99	Depth constraint point
ECS 168	7° 17' 9.01" S	62° 48' 17.66" E	0.99	Depth constraint point
ECS 169	7° 17' 50.93" S	62° 49' 0.34" E	0.99	Depth constraint point
ECS 170	7° 18' 33.72" S	62° 49' 42.2" E	0.99	Depth constraint point
ECS 171	7° 19' 16.49" S	62° 50' 24.04" E	0.99	Depth constraint point
ECS 172	7° 19' 59.27" S	62° 51' 5.89" E	0.99	Depth constraint point
ECS 173	7° 20' 42.05" S	62° 51' 47.73" E	0.99	Depth constraint point
ECS 174	7° 21' 24.83" S	62° 52' 29.57" E	0.99	Depth constraint point
ECS 175	7° 22' 7.6" S	62° 53' 11.43" E	0.99	Depth constraint point
ECS 176	7° 22' 50.38" S	62° 53' 53.28" E	0.99	Depth constraint point
ECS 177	7° 23' 34.49" S	62° 54' 33.69" E	0.99	Depth constraint point
ECS 178	7° 24' 19.51" S	62° 55' 13.11" E	0.99	Depth constraint point
ECS 179	7° 25' 4.53" S	62° 55' 52.51" E	0.99	Depth constraint point
ECS 180	7° 25' 50.24" S	62° 56' 31.11" E	0.99	Depth constraint point
ECS 181	7° 26' 36.24" S	62° 57' 9.37" E	0.99	Depth constraint point
ECS 182	7° 27' 22.33" S	62° 57' 47.5" E	0.99	Depth constraint point
ECS 183	7° 28' 9.2" S	62° 58' 24.68" E	0.99	Depth constraint point
ECS 184	7° 28' 56.23" S	62° 59' 1.65" E	0.99	Depth constraint point
ECS 185	7° 29' 43.6" S	62° 59' 38.18" E	0.99	Depth constraint point
ECS 186	7° 29' 45.1" S	62° 59' 39.32" E	0.03	Depth constraint point
ECS 187	7° 58' 11.4" S	63° 20' 51.69" E	35.27	Depth constraint point
ECS 188	8° 35' 15.21" S	63° 56' 19.56" E	50.96	Depth constraint point
ECS 189	8° 35' 55.35" S	63° 57' 3.85" E	0.99	Depth constraint point
ECS 190	8° 36' 35.47" S	63° 57' 48.12" E	0.99	Depth constraint point
ECS 191	8° 37' 15.61" S	63° 58' 32.41" E	0.99	Depth constraint point
ECS 192	8° 37' 56.57" S	63° 59' 15.9" E	0.99	Depth constraint point
ECS 193	8° 38' 37.97" S	63° 59' 59" E	0.99	Depth constraint point

Point ID	Latitude (deg°min'sec")	Longitude (deg°min'sec")	Distance (M)	Article 76 criterion
ECS 194	8° 39' 19.41" S	64° 0' 42.05" E	0.99	Depth constraint point
ECS 195	8° 40' 1.9" S	64° 1' 24.05" E	0.99	Depth constraint point
ECS 196	8° 40' 44.48" S	64° 2' 5.96" E	0.99	Depth constraint point
ECS 197	8° 41' 27.26" S	64° 2' 47.65" E	0.99	Depth constraint point
ECS 198	8° 42' 10.97" S	64° 3' 28.36" E	0.99	Depth constraint point
ECS 199	8° 42' 54.68" S	64° 4' 9.06" E	0.99	Depth constraint point
ECS 200	8° 43' 38.79" S	64° 4' 49.32" E	0.99	Depth constraint point
ECS 201	8° 44' 23.53" S	64° 5' 28.9" E	0.99	Depth constraint point
ECS 202	8° 45' 8.27" S	64° 6' 8.45" E	0.99	Depth constraint point
ECS 203	8° 45' 53.66" S	64° 6' 47.24" E	0.99	Depth constraint point
ECS 204	8° 46' 39.46" S	64° 7' 25.55" E	0.99	Depth constraint point
ECS 205	8° 47' 25.41" S	64° 8' 3.67" E	0.99	Depth constraint point
ECS 206	8° 48' 11.92" S	64° 8' 41.11" E	0.99	Depth constraint point
ECS 207	8° 48' 58.74" S	64° 9' 18.13" E	0.99	Depth constraint point
ECS 208	8° 49' 46" S	64° 9' 54.61" E	0.99	Depth constraint point
ECS 209	8° 50' 33.45" S	64° 10' 30.81" E	0.99	Depth constraint point
ECS 210	8° 51' 21.45" S	64° 11' 6.29" E	0.99	Depth constraint point
ECS 211	8° 52' 9.84" S	64° 11' 41.23" E	0.99	Depth constraint point
ECS 212	8° 52' 58.22" S	64° 12' 16.14" E	0.99	Depth constraint point
ECS 213	8° 53' 47.28" S	64° 12' 50.11" E	0.99	Depth constraint point
ECS 214	8° 54' 36.48" S	64° 13' 23.84" E	0.99	Depth constraint point
ECS 215	8° 55' 26.27" S	64° 13' 56.69" E	0.99	Depth constraint point
ECS 216	8° 56' 16.64" S	64° 14' 28.66" E	0.99	Depth constraint point
ECS 217	8° 57' 7.01" S	64° 15' 0.63" E	0.99	Depth constraint point
ECS 218	8° 57' 57.37" S	64° 15' 32.6" E	0.99	Depth constraint point
ECS 219	8° 58' 47.73" S	64° 16' 4.54" E	0.99	Depth constraint point
ECS 220	8° 59' 38.66" S	64° 16' 35.58" E	0.99	Depth constraint point
ECS 221	9° 0' 30.07" S	64° 17' 5.79" E	0.99	Depth constraint point
ECS 222	9° 1' 21.81" S	64° 17' 35.43" E	0.99	Depth constraint point
ECS 223	9° 2' 13.79" S	64° 18' 4.63" E	0.99	Depth constraint point
ECS 224	9° 3' 6" S	64° 18' 33.41" E	0.99	Depth constraint point
ECS 225	9° 3' 28.08" S	64° 18' 45.33" E	0.42	Depth constraint point
ECS 226	9° 42' 35.25" S	64° 39' 34.12" E	44.04	Depth constraint point
ECS 227	9° 43' 27.81" S	64° 40' 2.05" E	0.99	Depth constraint point
ECS 228	9° 44' 20.79" S	64° 40' 29.16" E	0.99	Depth constraint point
ECS 229	9° 45' 13.83" S	64° 40' 56.16" E	0.99	Depth constraint point
ECS 230	9° 46' 7.16" S	64° 41' 22.55" E	0.99	Depth constraint point
ECS 231	9° 47' 0.7" S	64° 41' 48.51" E	0.99	Depth constraint point
ECS 232	9° 47' 54.64" S	64° 42' 13.58" E	0.99	Depth constraint point
ECS 233	9° 48' 48.77" S	64° 42' 38.28" E	0.99	Depth constraint point

Point ID	Latitude (deg°min'sec")	Longitude (deg°min'sec")	Distance (M)	Article 76 criterion
ECS 234	9° 49' 43.04" S	64° 43' 2.61" E	0.99	Depth constraint point
ECS 235	9° 50' 37.65" S	64° 43' 26.18" E	0.99	Depth constraint point
ECS 236	9° 51' 32.37" S	64° 43' 49.47" E	0.99	Depth constraint point
ECS 237	9° 52' 27.9" S	64° 44' 10.73" E	0.99	Depth constraint point
ECS 238	9° 53' 23.45" S	64° 44' 31.9" E	0.99	Depth constraint point
ECS 239	9° 54' 19" S	64° 44' 53.08" E	0.99	Depth constraint point
ECS 240	9° 55' 14.54" S	64° 45' 14.25" E	0.99	Depth constraint point
ECS 241	9° 56' 10.32" S	64° 45' 34.8" E	0.99	Depth constraint point
ECS 242	9° 57' 6.17" S	64° 45' 55.15" E	0.99	Depth constraint point
ECS 243	9° 58' 2.01" S	64° 46' 15.5" E	0.98	Depth constraint point
ECS 244	9° 58' 58.24" S	64° 46' 34.73" E	0.98	Depth constraint point
ECS 245	9° 59' 54.87" S	64° 46' 52.72" E	0.98	Depth constraint point
ECS 246	10° 0' 51.57" S	64° 47' 10.46" E	0.98	Depth constraint point
ECS 247	10° 1' 48.48" S	64° 47' 27.49" E	0.98	Depth constraint point
ECS 248	10° 2' 45.52" S	64° 47' 44.08" E	0.98	Depth constraint point
ECS 249	10° 3' 42.91" S	64° 47' 59.38" E	0.98	Depth constraint point
ECS 250	10° 4' 40.39" S	64° 48' 14.32" E	0.98	Depth constraint point
ECS 251	10° 5' 37.87" S	64° 48' 29.23" E	0.98	Depth constraint point
ECS 252	10° 6' 35.35" S	64° 48' 44.15" E	0.98	Depth constraint point
ECS 253	10° 7' 33.17" S	64° 48' 57.66" E	0.98	Depth constraint point
ECS 254	10° 8' 31.06" S	64° 49' 10.79" E	0.98	Depth constraint point
ECS 255	10° 9' 29.11" S	64° 49' 23.23" E	0.98	Depth constraint point
ECS 256	10° 10' 27.23" S	64° 49' 35.32" E	0.98	Depth constraint point
ECS 257	10° 11' 25.53" S	64° 49' 46.39" E	0.98	Depth constraint point
ECS 258	10° 12' 23.89" S	64° 49' 57.21" E	0.98	Depth constraint point
ECS 259	10° 13' 22.47" S	64° 50' 6.63" E	0.98	Depth constraint point
ECS 260	10° 14' 21.17" S	64° 50' 15.31" E	0.98	Depth constraint point
ECS 261	10° 15' 19.86" S	64° 50' 24.01" E	0.98	Depth constraint point
ECS 262	10° 16' 18.56" S	64° 50' 32.69" E	0.98	Depth constraint point
ECS 263	10° 17' 17.24" S	64° 50' 41.37" E	0.98	Depth constraint point
ECS 264	10° 18' 16.02" S	64° 50' 49.45" E	0.98	Depth constraint point
ECS 265	10° 19' 14.97" S	64° 50' 55.98" E	0.98	Depth constraint point
ECS 266	10° 20' 13.96" S	64° 51' 2.19" E	0.98	Depth constraint point
ECS 267	10° 21' 13.02" S	64° 51' 7.55" E	0.98	Depth constraint point
ECS 268	10° 22' 12.11" S	64° 51' 12.6" E	0.98	Depth constraint point
ECS 269	10° 23' 11.26" S	64° 51' 16.75" E	0.98	Depth constraint point
ECS 270	10° 24' 10.43" S	64° 51' 20.62" E	0.98	Depth constraint point
ECS 271	10° 25' 9.65" S	64° 51' 23.62" E	0.98	Depth constraint point
ECS 272	10° 26' 8.87" S	64° 51' 26.33" E	0.98	Depth constraint point
ECS 273	10° 27' 8.13" S	64° 51' 28.12" E	0.98	Depth constraint point

Point ID	Latitude (deg°min'sec")	Longitude (deg°min'sec")	Distance (M)	Article 76 criterion
ECS 274	10° 28' 7.39" S	64° 51' 29.71" E	0.98	Depth constraint point
ECS 275	10° 29' 6.66" S	64° 51' 30.29" E	0.98	Depth constraint point
ECS 276	10° 29' 25.24" S	64° 51' 30.43" E	0.31	Depth constraint point / 60 M distance criterion
ECS 277	10° 30' 16.53" S	64° 51' 0.41" E	0.98	60 M distance criterion
ECS 278	10° 31' 7.21" S	64° 50' 29.34" E	0.98	60 M distance criterion
ECS 279	10° 31' 57.28" S	64° 49' 57.32" E	0.98	60 M distance criterion
ECS 280	10° 32' 46.94" S	64° 49' 24.61" E	0.98	60 M distance criterion
ECS 281	10° 33' 25.15" S	64° 48' 59.45" E	0.76	60 M distance criterion
ECS 282	11° 31' 26.73" S	64° 33' 37.72" E	59.71	60 M distance criterion
ECS 283	11° 32' 25.5" S	64° 33' 43.76" E	0.98	60 M distance criterion
ECS 284	11° 33' 24.29" S	64° 33' 49.39" E	0.98	60 M distance criterion
ECS 285	11° 34' 23.2" S	64° 33' 53.62" E	0.98	60 M distance criterion
ECS 286	11° 35' 22.13" S	64° 33' 57.36" E	0.98	60 M distance criterion
ECS 287	11° 36' 21.14" S	64° 33' 59.64" E	0.98	60 M distance criterion
ECS 288	11° 37' 20.16" S	64° 34' 1.37" E	0.98	60 M distance criterion
ECS 289	11° 38' 19.2" S	64° 34' 1.09" E	0.98	60 M distance criterion
ECS 290	11° 39' 18.23" S	64° 34' 0.33" E	0.98	60 M distance criterion
ECS 291	11° 40' 17.26" S	64° 33' 59.53" E	0.98	60 M distance criterion
ECS 292	11° 41' 16.26" S	64° 33' 57.72" E	0.98	60 M distance criterion
ECS 293	11° 42' 15.19" S	64° 33' 54.28" E	0.98	60 M distance criterion
ECS 294	11° 43' 14.06" S	64° 33' 50.05" E	0.98	60 M distance criterion
ECS 295	11° 44' 12.85" S	64° 33' 44.7" E	0.98	60 M distance criterion
ECS 296	11° 45' 11.54" S	64° 33' 38.46" E	0.98	60 M distance criterion
ECS 297	11° 46' 10.12" S	64° 33' 31.21" E	0.98	60 M distance criterion
ECS 298	11° 47' 8.61" S	64° 33' 23.33" E	0.98	60 M distance criterion
ECS 299	11° 48' 6.89" S	64° 33' 13.96" E	0.98	60 M distance criterion
ECS 300	11° 49' 5.02" S	64° 33' 3.66" E	0.98	60 M distance criterion
ECS 301	11° 50' 3" S	64° 32' 52.57" E	0.98	60 M distance criterion
ECS 302	11° 50' 14.4" S	64° 32' 50.15" E	0.19	60 M distance criterion
ECS 303	11° 51' 9.43" S	64° 32' 39" E	0.93	60 M distance criterion / Depth constraint point
ECS 304	11° 51' 38.49" S	64° 32' 29.72" E	0.51	Depth constraint point
ECS 305	11° 52' 34.71" S	64° 32' 11.56" E	0.98	Depth constraint point
ECS 306	11° 53' 30.82" S	64° 31' 53.1" E	0.98	Depth constraint point
ECS 307	11° 54' 26.65" S	64° 31' 33.77" E	0.98	Depth constraint point
ECS 308	11° 55' 22.4" S	64° 31' 14.24" E	0.98	Depth constraint point
ECS 309	11° 56' 17.82" S	64° 30' 53.75" E	0.98	Depth constraint point
ECS 310	11° 57' 13.2" S	64° 30' 33.15" E	0.98	Depth constraint point
ECS 311	11° 58' 8.25" S	64° 30' 11.7" E	0.98	Depth constraint point
ECS 312	11° 59' 3.18" S	64° 29' 49.89" E	0.98	Depth constraint point

Point ID	Latitude (deg°min'sec")	Longitude (deg°min'sec")	Distance (M)	Article 76 criterion
ECS 313	11° 59' 57.71" S	64° 29' 27.15" E	0.98	Depth constraint point
ECS 314	12° 0' 52.24" S	64° 29' 4.35" E	0.98	Depth constraint point
ECS 315	12° 1' 46.34" S	64° 28' 40.57" E	0.98	Depth constraint point
ECS 316	12° 2' 40.39" S	64° 28' 16.65" E	0.98	Depth constraint point
ECS 317	12° 3' 34.11" S	64° 27' 51.95" E	0.98	Depth constraint point
ECS 318	12° 4' 27.6" S	64° 27' 26.82" E	0.98	Depth constraint point
ECS 319	12° 5' 20.8" S	64° 27' 1.03" E	0.98	Depth constraint point
ECS 320	12° 6' 13.78" S	64° 26' 34.78" E	0.98	Depth constraint point
ECS 321	12° 7' 6.64" S	64° 26' 8.3" E	0.98	Depth constraint point
ECS 322	12° 7' 59.01" S	64° 25' 40.83" E	0.98	Depth constraint point
ECS 323	12° 8' 51.26" S	64° 25' 13.15" E	0.98	Depth constraint point
ECS 324	12° 9' 43.06" S	64° 24' 44.58" E	0.98	Depth constraint point
ECS 325	12° 10' 34.86" S	64° 24' 16.05" E	0.98	Depth constraint point
ECS 326	12° 11' 26.1" S	64° 23' 46.46" E	0.98	Depth constraint point
ECS 327	12° 12' 17.25" S	64° 23' 16.75" E	0.98	Depth constraint point
ECS 328	12° 13' 7.99" S	64° 22' 46.31" E	0.98	Depth constraint point
ECS 329	12° 13' 40" S	64° 22' 26.87" E	0.62	Depth constraint point / 60 M distance criterion
ECS 330	12° 14' 27.4" S	64° 21' 51.33" E	0.98	60 M distance criterion
ECS 331	12° 15' 14.33" S	64° 21' 15.1" E	0.98	60 M distance criterion
ECS 332	12° 16' 0.39" S	64° 20' 37.77" E	0.98	60 M distance criterion
ECS 333	12° 16' 46.14" S	64° 20' 0.06" E	0.98	60 M distance criterion
ECS 334	12° 17' 31.35" S	64° 19' 21.67" E	0.98	60 M distance criterion
ECS 335	12° 18' 15.38" S	64° 18' 41.9" E	0.98	60 M distance criterion
ECS 336	12° 18' 59.42" S	64° 18' 2.15" E	0.98	60 M distance criterion
ECS 337	12° 19' 42.48" S	64° 17' 21.28" E	0.98	60 M distance criterion
ECS 338	12° 20' 24.76" S	64° 16' 39.62" E	0.98	60 M distance criterion
ECS 339	12° 21' 7.04" S	64° 15' 57.93" E	0.98	60 M distance criterion
ECS 340	12° 21' 47.85" S	64° 15' 14.75" E	0.98	60 M distance criterion
ECS 341	12° 22' 28.24" S	64° 14' 31.19" E	0.98	60 M distance criterion
ECS 342	12° 23' 8.55" S	64° 13' 47.52" E	0.98	60 M distance criterion
ECS 343	12° 23' 47.05" S	64° 13' 2.2" E	0.98	60 M distance criterion
ECS 344	12° 24' 25.5" S	64° 12' 16.85" E	0.98	60 M distance criterion
ECS 345	12° 25' 3.43" S	64° 11' 31.04" E	0.98	60 M distance criterion
ECS 346	12° 25' 39.89" S	64° 10' 44.02" E	0.98	60 M distance criterion
ECS 347	12° 26' 16.3" S	64° 9' 56.97" E	0.98	60 M distance criterion
ECS 348	12° 26' 51.49" S	64° 9' 8.96" E	0.98	60 M distance criterion
ECS 349	12° 27' 26" S	64° 8' 20.43" E	0.98	60 M distance criterion
ECS 350	12° 27' 59.47" S	64° 7' 31.18" E	0.98	60 M distance criterion
ECS 351	12° 28' 32.35" S	64° 6' 41.5" E	0.98	60 M distance criterion
ECS 352	12° 29' 4.75" S	64° 5' 51.51" E	0.98	60 M distance criterion

Point ID	Latitude (deg°min'sec")	Longitude (deg°min'sec")	Distance (M)	Article 76 criterion
ECS 353	12° 29' 35.71" S	64° 5' 0.59" E	0.98	60 M distance criterion
ECS 354	12° 30' 6.68" S	64° 4' 9.64" E	0.98	60 M distance criterion
ECS 355	12° 30' 36.23" S	64° 3' 17.86" E	0.98	60 M distance criterion
ECS 356	12° 31' 5.22" S	64° 2' 25.73" E	0.98	60 M distance criterion
ECS 357	12° 31' 32.87" S	64° 1' 32.86" E	0.98	60 M distance criterion
ECS 358	12° 32' 0.07" S	64° 0' 39.74" E	0.98	60 M distance criterion
ECS 359	12° 32' 26.61" S	63° 59' 46.31" E	0.98	60 M distance criterion
ECS 360	12° 32' 51.98" S	63° 58' 52.27" E	0.98	60 M distance criterion
ECS 361	12° 33' 16.52" S	63° 57' 57.85" E	0.98	60 M distance criterion
ECS 362	12° 33' 39.96" S	63° 57' 2.9" E	0.98	60 M distance criterion
ECS 363	12° 34' 3.13" S	63° 56' 7.86" E	0.98	60 M distance criterion
ECS 364	12° 34' 24.78" S	63° 55' 12.17" E	0.98	60 M distance criterion
ECS 365	12° 34' 46.05" S	63° 54' 16.32" E	0.98	60 M distance criterion
ECS 366	12° 35' 5.81" S	63° 53' 19.92" E	0.98	60 M distance criterion
ECS 367	12° 35' 25.4" S	63° 52' 23.44" E	0.98	60 M distance criterion
ECS 368	12° 35' 43.32" S	63° 51' 26.39" E	0.98	60 M distance criterion
ECS 369	12° 36' 1.12" S	63° 50' 29.32" E	0.98	60 M distance criterion
ECS 370	12° 36' 9.38" S	63° 50' 1.11" E	0.48	60 M distance criterion
ECS 371	13° 27' 9.83" S	63° 17' 59.39" E	59.64	60 M distance criterion
ECS 372	13° 28' 7.59" S	63° 18' 9.6" E	0.97	60 M distance criterion
ECS 373	13° 29' 5.47" S	63° 18' 19.02" E	0.97	60 M distance criterion
ECS 374	13° 30' 3.48" S	63° 18' 27.52" E	0.97	60 M distance criterion
ECS 375	13° 31' 1.65" S	63° 18' 34.87" E	0.97	60 M distance criterion
ECS 376	13° 31' 59.87" S	63° 18' 41.61" E	0.97	60 M distance criterion
ECS 377	13° 32' 58.23" S	63° 18' 47.05" E	0.97	60 M distance criterion
ECS 378	13° 33' 56.63" S	63° 18' 51.87" E	0.97	60 M distance criterion
ECS 379	13° 34' 55.12" S	63° 18' 55.35" E	0.97	60 M distance criterion
ECS 380	13° 35' 53.64" S	63° 18' 58.22" E	0.97	60 M distance criterion
ECS 381	13° 36' 52.2" S	63° 18' 59.8" E	0.97	60 M distance criterion
ECS 382	13° 37' 50.76" S	63° 19' 0.71" E	0.97	60 M distance criterion
ECS 383	13° 38' 49.34" S	63° 19' 0.35" E	0.97	60 M distance criterion
ECS 384	13° 39' 47.9" S	63° 18' 59.3" E	0.97	60 M distance criterion
ECS 385	13° 40' 46.42" S	63° 18' 57.04" E	0.97	60 M distance criterion
ECS 386	13° 41' 44.9" S	63° 18' 54.04" E	0.97	60 M distance criterion
ECS 387	13° 42' 43.32" S	63° 18' 49.82" E	0.97	60 M distance criterion
ECS 388	13° 43' 41.66" S	63° 18' 44.88" E	0.97	60 M distance criterion
ECS 389	13° 44' 39.91" S	63° 18' 38.77" E	0.97	60 M distance criterion
ECS 390	13° 45' 38.07" S	63° 18' 31.95" E	0.97	60 M distance criterion
ECS 391	13° 46' 36.11" S	63° 18' 24.13" E	0.97	60 M distance criterion
ECS 392	13° 47' 33.96" S	63° 18' 15.03" E	0.97	60 M distance criterion

Point ID	Latitude (deg°min'sec")	Longitude (deg°min'sec")	Distance (M)	Article 76 criterion
ECS 393	13° 48' 31.68" S	63° 18' 5.06" E	0.97	60 M distance criterion
ECS 394	13° 49' 29.26" S	63° 17' 54.35" E	0.97	60 M distance criterion
ECS 395	13° 50' 26.62" S	63° 17' 42.45" E	0.97	60 M distance criterion
ECS 396	13° 51' 23.82" S	63° 17' 29.85" E	0.97	60 M distance criterion
ECS 397	13° 52' 20.76" S	63° 17' 16.04" E	0.97	60 M distance criterion
ECS 398	13° 53' 17.55" S	63° 17' 1.6" E	0.97	60 M distance criterion
ECS 399	13° 54' 14" S	63° 16' 45.87" E	0.97	60 M distance criterion
ECS 400	13° 55' 10.36" S	63° 16' 29.8" E	0.97	60 M distance criterion
ECS 401	13° 56' 6.27" S	63° 16' 12.17" E	0.97	60 M distance criterion
ECS 402	13° 57' 1.97" S	63° 15' 53.9" E	0.97	60 M distance criterion
ECS 403	13° 57' 57.25" S	63° 15' 34.32" E	0.97	60 M distance criterion
ECS 404	13° 58' 52.46" S	63° 15' 14.56" E	0.97	60 M distance criterion
ECS 405	13° 59' 47.04" S	63° 14' 53.04" E	0.97	60 M distance criterion
ECS 406	14° 0' 10.41" S	63° 14' 44.28" E	0.41	60 M distance criterion
ECS 407	15° 0' 24.92" S	63° 13' 51.03" E	59.99	60 M distance criterion
ECS 408	15° 0' 54.51" S	63° 14' 1.47" E	0.52	60 M distance criterion
ECS 409	15° 1' 49.57" S	63° 14' 20.87" E	0.97	60 M distance criterion
ECS 410	15° 2' 44.96" S	63° 14' 39.26" E	0.97	60 M distance criterion
ECS 411	15° 3' 40.57" S	63° 14' 56.94" E	0.97	60 M distance criterion
ECS 412	15° 4' 36.47" S	63° 15' 13.57" E	0.97	60 M distance criterion
ECS 413	15° 5' 32.64" S	63° 15' 29.24" E	0.97	60 M distance criterion
ECS 414	15° 6' 29.06" S	63° 15' 43.88" E	0.97	60 M distance criterion
ECS 415	15° 7' 25.64" S	63° 15' 57.84" E	0.97	60 M distance criterion
ECS 416	15° 8' 22.48" S	63° 16' 10.6" E	0.97	60 M distance criterion
ECS 417	15° 9' 19.45" S	63° 16' 22.7" E	0.97	60 M distance criterion
ECS 418	15° 10' 16.66" S	63° 16' 33.56" E	0.97	60 M distance criterion
ECS 419	15° 11' 13.97" S	63° 16' 43.75" E	0.97	60 M distance criterion
ECS 420	15° 12' 11.47" S	63° 16' 52.72" E	0.97	60 M distance criterion
ECS 421	15° 13' 9.07" S	63° 17' 1" E	0.97	60 M distance criterion
ECS 422	15° 14' 6.81" S	63° 17' 8.1" E	0.97	60 M distance criterion
ECS 423	15° 15' 4.61" S	63° 17' 14.64" E	0.97	60 M distance criterion
ECS 424	15° 16' 2.53" S	63° 17' 19.92" E	0.96	60 M distance criterion
ECS 425	15° 17' 0.53" S	63° 17' 24.03" E	0.96	60 M distance criterion
ECS 426	15° 17' 58.57" S	63° 17' 27.34" E	0.96	60 M distance criterion
ECS 427	15° 18' 56.65" S	63° 17' 29.78" E	0.96	60 M distance criterion
ECS 428	15° 19' 54.76" S	63° 17' 31.21" E	0.96	60 M distance criterion
ECS 429	15° 20' 52.87" S	63° 17' 31.68" E	0.96	60 M distance criterion
ECS 430	15° 21' 50.99" S	63° 17' 31.23" E	0.96	60 M distance criterion
ECS 431	15° 22' 49.08" S	63° 17' 29.72" E	0.96	60 M distance criterion
ECS 432	15° 23' 47.14" S	63° 17' 27.38" E	0.96	60 M distance criterion

Point ID	Latitude (deg°min'sec")	Longitude (deg°min'sec")	Distance (M)	Article 76 criterion
ECS 433	15° 24' 45.14" S	63° 17' 23.92" E	0.96	60 M distance criterion
ECS 434	15° 25' 43.1" S	63° 17' 19.68" E	0.96	60 M distance criterion
ECS 435	15° 26' 40.95" S	63° 17' 14.35" E	0.96	60 M distance criterion
ECS 436	15° 27' 38.73" S	63° 17' 8.18" E	0.96	60 M distance criterion
ECS 437	15° 28' 36.37" S	63° 17' 0.81" E	0.96	60 M distance criterion
ECS 438	15° 29' 33.93" S	63° 16' 52.8" E	0.96	60 M distance criterion
ECS 439	15° 30' 31.3" S	63° 16' 43.5" E	0.96	60 M distance criterion
ECS 440	15° 31' 28.57" S	63° 16' 33.62" E	0.96	60 M distance criterion
ECS 441	15° 32' 25.61" S	63° 16' 22.42" E	0.96	60 M distance criterion
ECS 442	15° 33' 22.54" S	63° 16' 10.64" E	0.96	60 M distance criterion
ECS 443	15° 34' 19.19" S	63° 15' 57.55" E	0.96	60 M distance criterion
ECS 444	15° 35' 15.71" S	63° 15' 43.89" E	0.96	60 M distance criterion
ECS 445	15° 36' 11.98" S	63° 15' 29.21" E	0.96	60 M distance criterion
ECS 446	15° 37' 8.02" S	63° 15' 13.62" E	0.96	60 M distance criterion
ECS 447	15° 38' 3.68" S	63° 14' 56.62" E	0.96	60 M distance criterion
ECS 448	15° 38' 59.2" S	63° 14' 39.19" E	0.96	60 M distance criterion
ECS 449	15° 39' 54.36" S	63° 14' 20.61" E	0.96	60 M distance criterion
ECS 450	15° 40' 49.29" S	63° 14' 1.31" E	0.96	60 M distance criterion
ECS 451	15° 41' 43.92" S	63° 13' 41.15" E	0.96	60 M distance criterion
ECS 452	15° 42' 38.24" S	63° 13' 20.11" E	0.96	60 M distance criterion
ECS 453	15° 43' 32.04" S	63° 12' 57.69" E	0.96	60 M distance criterion
ECS 454	15° 44' 25.57" S	63° 12' 34.62" E	0.96	60 M distance criterion
ECS 455	15° 45' 18.84" S	63° 12' 10.93" E	0.96	60 M distance criterion
ECS 456	15° 46' 11.56" S	63° 11' 45.95" E	0.96	60 M distance criterion
ECS 457	15° 47' 4.12" S	63° 11' 20.67" E	0.96	60 M distance criterion
ECS 458	15° 47' 55.96" S	63° 10' 53.8" E	0.96	60 M distance criterion
ECS 459	15° 48' 47.78" S	63° 10' 26.93" E	0.96	60 M distance criterion
ECS 460	15° 49' 38.72" S	63° 9' 58.32" E	0.96	60 M distance criterion
ECS 461	15° 50' 29.63" S	63° 9' 29.65" E	0.96	60 M distance criterion
ECS 462	15° 51' 19.61" S	63° 8' 59.31" E	0.96	60 M distance criterion
ECS 463	15° 52' 9.43" S	63° 8' 28.68" E	0.96	60 M distance criterion
ECS 464	15° 52' 58.84" S	63° 7' 57.38" E	0.96	60 M distance criterion
ECS 465	15° 53' 47.88" S	63° 7' 25.04" E	0.97	60 M distance criterion / Baseline + 200M