

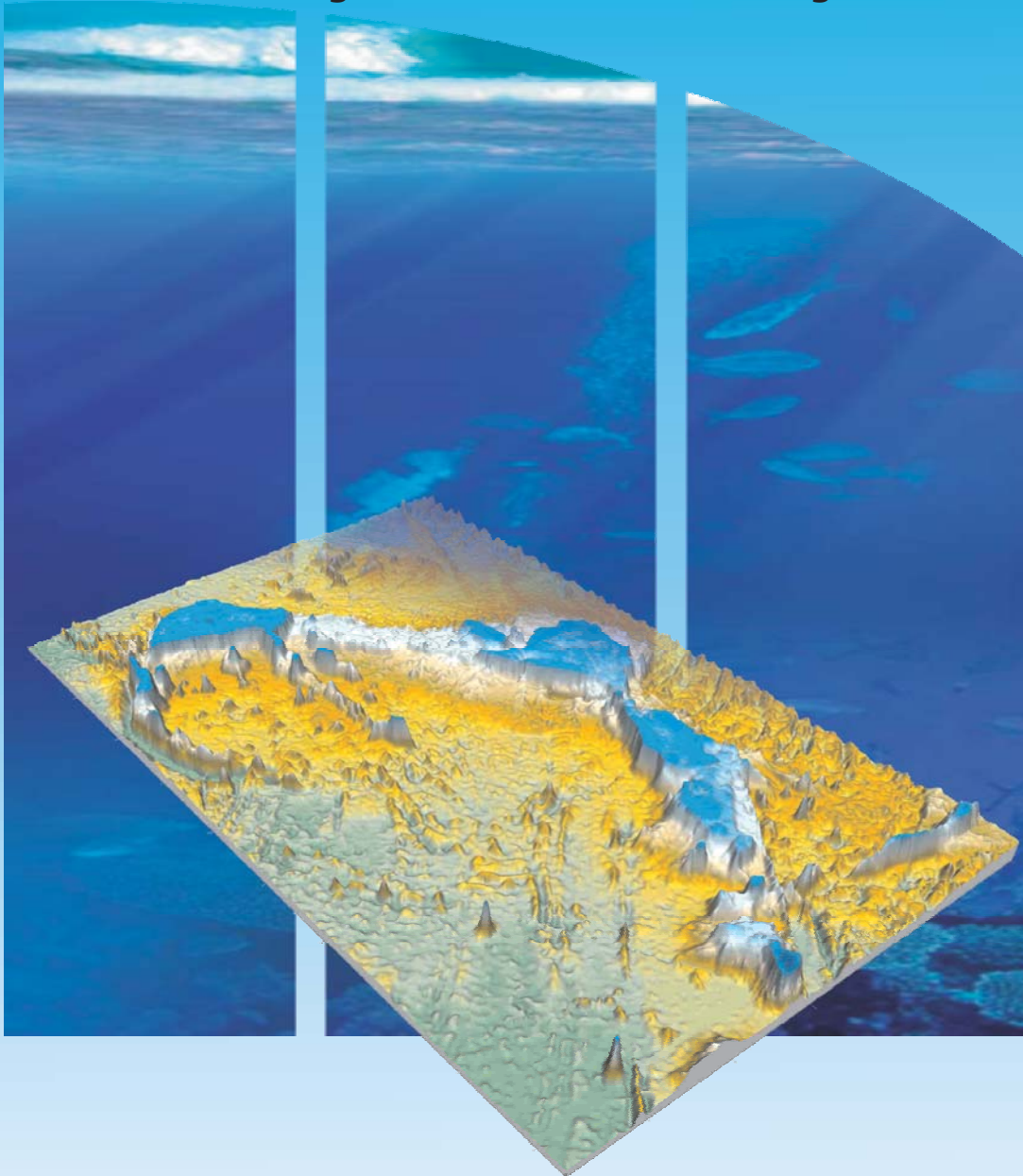
Republic of Mauritius



Republic of Seychelles

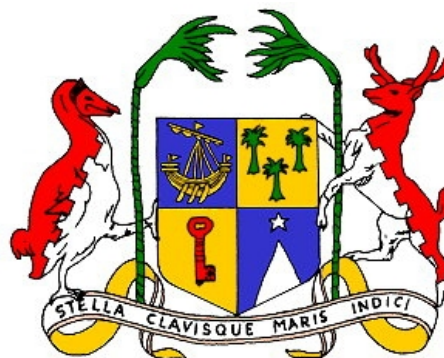
United Nations Convention on the Law of the Sea

Joint Submission to the Commission on the Limits of the Continental Shelf concerning the Mascarene Plateau region



Executive Summary

United Nations Convention on the Law of the Sea



Joint Submission to the Commission on the Limits of the Continental Shelf concerning the Mascarene Plateau

Republic of Seychelles

Republic of Mauritius

EXECUTIVE SUMMARY

SMS-ES-DOC

PREFACE

This Submission was prepared by the Government of the Republic of Seychelles and the Government of the Republic of Mauritius jointly.

The following Ministries, Departments, Statutory Corporations and Agencies of the Government of the Republic of Mauritius were responsible for the preparation of this Submission:

Prime Minister's Office
Ministry of Foreign Affairs, Regional Integration & International Trade
Attorney-General's Office
Ministry of Housing and Lands
Mauritius Oceanography Institute

The following Ministries, Departments, and Statutory Corporations of, and advisors to, the Government of the Republic of Seychelles were responsible for the preparation of this Submission:

Ministry of National Development
Ministry of Foreign Affairs
Ministry of Environment, Natural Resources and Transport
Department of Defence, Seychelles Coast Guard
Department of Legal Affairs
Seychelles Petroleum Company
Mr Joseph Athanasius, Legal Consultant

The following persons acted as legal and technical advisors during the preparation of this Submission¹:

Mr Joshua Brien, Legal Adviser, Commonwealth Secretariat, London
Mr Harald Brekke, Member of the Commission on the Limits of the Continental Shelf
Dr Karl Hinz, Emeritus Professor, University of Hannover, Germany;
former member of the Commission on the Limits of the Continental Shelf (1997-2002)

¹ The Republic of Mauritius and the Republic of Seychelles acknowledge the advice and/or assistance received from the following: The Government of India; UNEP Shelf Program (GRID-Arendal); Trust Fund established under Annex II to UNGA Res. 55/7; Dr James Howard Leven; Mr Christopher Scotese; Dr Indur Fagoonee; Cmdr. JC White; Lt. Cmdr. Ian Russell; Helicopter Seychelles Ltd; and, the Island Development Corporation of Seychelles.

TABLE OF CONTENTS

1. Introduction	4
2. Outer Limit of the Continental Shelf in the Mascarene Plateau	7
3. Maps and Coordinates	8
4. Provisions of Article 76 Invoked	10
5. Outstanding Maritime Delimitations	10
6. Detailed Description of the Outer Limit of the Extended Continental Shelf	11
7. Commission Members Who Provided Advice on this Submission	13
8. Note of Authentication	15
9. Annexes	16

Annexes

Annex 1—Table listing the points defining
the outer limit of the extended continental shelf
in Decimal Degrees.....[SMS-ES-ANNEX 1](#)

Annex 2—Table listing the points defining
the outer limit of the extended continental shelf
in Degrees, Minutes and Seconds.....[SMS-ES-ANNEX 2](#)

Maps

(A0 Executive Summary map supplied separately)

The outer limit of the continental shelf in
the Mascarene Plateau region showing the outer limit line
and area of extended continental shelf.....[SMS-ES-MAP 1](#)

The outer limit of the continental shelf in
the Mascarene Plateau region and the Article 76
fixed points[SMS-ES-MAP 2](#)

1. INTRODUCTION

- 1.1** This Submission to the Commission on the Limits of the Continental Shelf ('the Commission') is made by the Republic of Mauritius and the Republic of Seychelles (hereinafter referred to collectively as 'the two coastal States') pursuant to paragraph 8 of Article 76 of the 1982 United Nations Convention on the Law of the Sea ('the Convention') in support of the establishment by the two coastal States of the outer limits of the continental shelf that lie beyond 200 nautical miles (M) from the baselines from which the breadth of the territorial sea of the two coastal States is measured (hereinafter referred to as 'the territorial sea baselines') in the region of the Mascarene Plateau.
- 1.2** The two coastal States are small island nations located in the southwest Indian Ocean and are both Contracting Parties to the Convention. In this regard, the two States each respectively signed the Convention on the day it was opened for signature on 10 December 1982. The Republic of Seychelles subsequently ratified the Convention on 16 September 1991. The Republic of Mauritius ratified the Convention on 4 November 1994.
- 1.3** Under Article 4 of Annex II to the Convention, as supplemented by the decisions of the Eleventh and Eighteenth Meetings of the States Parties to the Convention respectively (SPLOS/72) and (SPLOS/183) regarding the ten-year period established by Article 4 of Annex II to the Convention, a coastal State for which the Convention entered into force before 13 May 1999 is required to submit particulars of the outer limits of the continental shelf to the Commission, together with supporting scientific and technical data, by 13 May 2009. This Submission by the two coastal States satisfies that obligation.
- 1.4** Considering that the two coastal States are of the view that they are each entitled to an area of continental shelf that lies beyond 200 M measured

from their territorial sea baselines in the region of the Mascarene Plateau, they have agreed to make a Joint Submission to the Commission for an extended continental shelf in this region in accordance with paragraph 4 of Annex I to the Rules of Procedure of the Commission on the Limits of the Continental Shelf (CLCS/40/Rev.1), adopted by the Commission on 17 April 2008 (hereinafter referred to as the 'Rules of Procedure').

- 1.5** This Submission is therefore of a joint nature, and comprises a single document prepared jointly and collaboratively by the two coastal States.
- 1.6** In addition, in accordance with paragraph 3 of Annex I to the Rules of Procedure, this Submission represents a partial submission in respect of a portion only of the extended continental shelf claimed by each of the two coastal States. Submissions for such other portions of extended continental shelf shall be made by each of the two coastal States individually at an appropriate time.
- 1.7** The two coastal States have agreed further to make this Submission without prejudice to the delimitation of maritime boundaries between them, pursuant to paragraph 4(a) of Annex I to the Rules of Procedure, in the region covered by this Submission. Accordingly, the delimitation of the extended continental shelf in this area shall be agreed between them on the basis of international law after the Commission has concluded its examination of this Submission and made recommendations to the two coastal States concerning the establishment of the outer limits of the extended continental shelf.
- 1.8** The area of continental shelf lying beyond 200 M measured from the territorial sea baselines of the two coastal States is referred to in this Submission as the 'extended continental shelf'. The two coastal States have also, for the purposes of this Submission, interpreted all references in Article 76 of the Convention to 'a coastal State', 'the coastal State', 'its

territorial sea', and 'its land territory', as applicable to 'the two coastal States', 'their territorial seas' and, 'their land territories' respectively.

1.9 The two coastal States have, for the purposes of preparing this Submission, applied the relevant provisions of Article 76 of the Convention, the relevant provisions of the Rules of Procedure and the recommendations contained in the Scientific and Technical Guidelines of the Commission on the Limits of the Continental Shelf (CLCS/11) adopted by the Commission on 13 May 1999 (hereinafter referred to as 'the Guidelines').

1.10 In accordance with the specifications of the Commission set out in Annex III to the Rules of Procedure and paragraphs 9.1.3 to 9.1.6 of the Guidelines, the submission of the two coastal States consists of three separate parts comprising an Executive Summary; a core analytical and descriptive part of the submission ('the Main Body'); and, a part containing all required supporting scientific and technical data arranged in a series of annexes ('supporting scientific and technical data').

1.11 The two coastal States wish to highlight that this Submission has been prepared notwithstanding significant challenges posed by geographical isolation, technical capacity and financial resources. In this regard, the two coastal States have received legal and technical assistance from the Commonwealth Secretariat during the preparation of this Submission.

2. OUTER LIMIT OF THE CONTINENTAL SHELF IN THE REGION OF THE MASCARENE PLATEAU

2.1 As provided for under paragraph 1 of Article 76 of the Convention, the two coastal States have a continental shelf comprising the seabed and subsoil of the submarine areas that extend beyond their territorial seas throughout the natural prolongation of their respective land territory to the outer edge of the continental margin, up to the limits provided for in paragraphs 4 to 6 of Article 76 or, to a distance of 200 M from the territorial sea baselines of the two coastal States where the outer edge of the continental margin does not extend up to that distance.

2.2 Paragraphs 4 to 6 of Article 76 of the Convention elaborate provisions setting out the manner in which a coastal State may establish the outer edge of its continental margin, and its extended continental shelf, wherever that margin extends beyond 200 M measured from the territorial sea baselines.

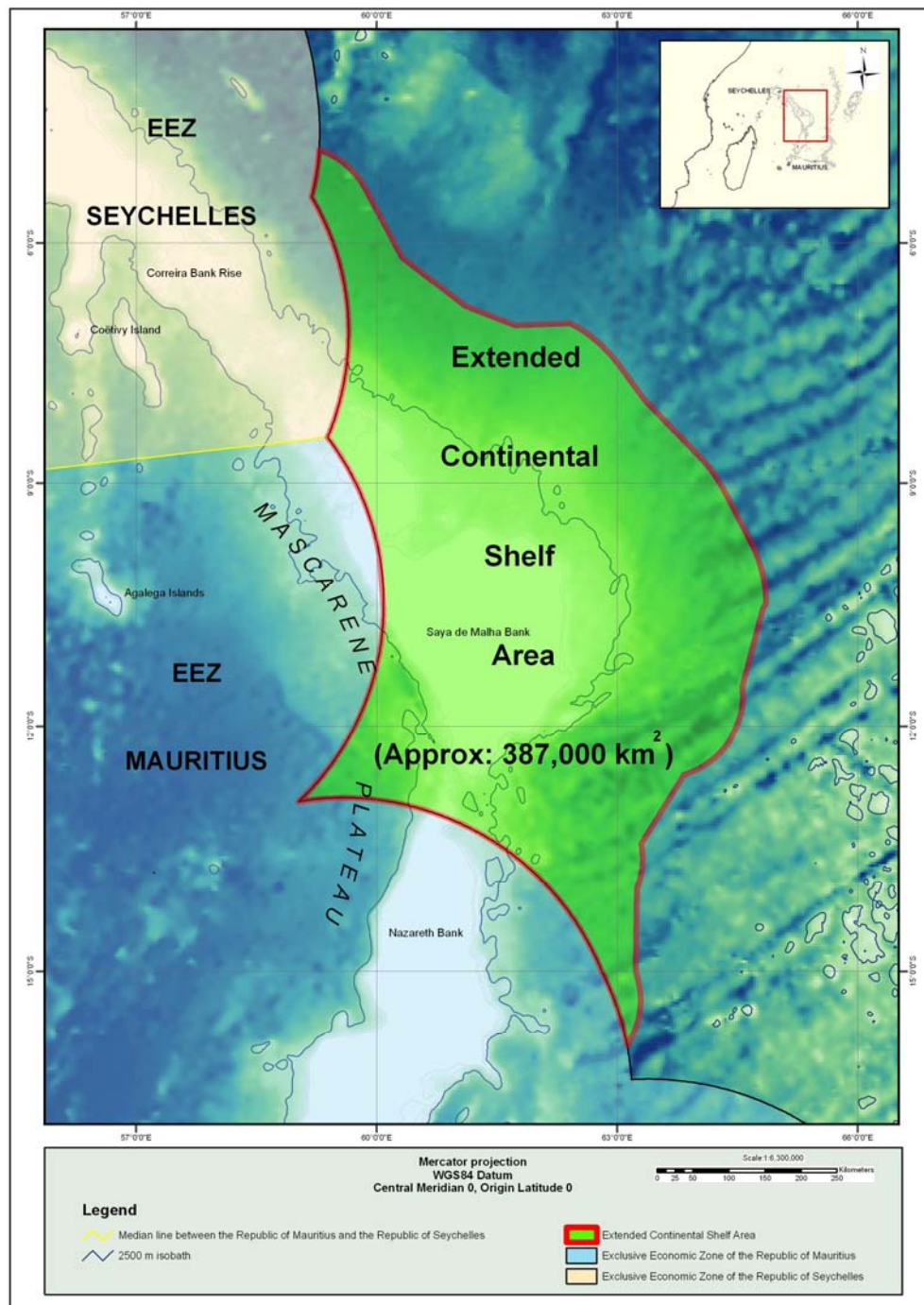
2.3 As set out in paragraph 7 of Article 76 of the Convention, a coastal State is to delineate the outer limits of the extended continental shelf by straight lines not exceeding 60 M in length, connecting fixed points ('fixed points') defined by coordinates of latitude and longitude.

2.4 The data submitted by the two coastal States in support of this Submission establish that the outer edge of the continental margin appurtenant to the relevant land territory of the two coastal States in the region of the Mascarene Plateau extends beyond 200 M measured from the territorial sea baselines of the two coastal States.

2.5 Section 6 of the Executive Summary provides an outline of the Mascarene Plateau, including a depiction of the outer limits of the extended continental shelf submitted by the two coastal States in this region. A map of the outer limit of the extended continental shelf is shown in [SMS-ES-MAP1](#).

3. MAPS AND COORDINATES

- 3.1** Two (2) maps at an appropriate scale are included in this Executive Summary in two forms: as [SMS-ES-MAP 1](#) and [SMS-ES-MAP 2](#) within this document, and as separate A0-size maps. The first map provides an overview of the area of extended continental shelf submitted by the two coastal States to the Commission in this Submission. The second map depicts the location of the fixed points that define the outer limit of the relevant area and the provisions of Article 76 invoked.
- 3.2** Lists of coordinates of the fixed points that define the outer limit of the extended continental shelf in this Submission are supplied in [SMS-ES-ANNEX 1](#) and [SMS-ES-ANNEX 2](#), which set out the fixed points defining the outer limit of the extended continental shelf in the Mascarene Plateau in decimal degrees and in degrees, minutes and decimal seconds respectively. The provision of Article 76 invoked to define each fixed point, as well as the distance between adjacent points, is also indicated in [SMS-ES-ANNEX 1](#) and [SMS-ES-ANNEX 2](#).



SMS-ES-MAP 1.

Map depicting the area of extended continental shelf of the two coastal States in the region of the Mascarene Plateau showing the outer limit line.

4. PROVISIONS OF ARTICLE 76 INVOKED

For the purposes of this Submission, the two coastal States invoke paragraphs 4(b) and 7 of Article 76 of the Convention to support the establishment of the outer limits of the extended continental shelf. Paragraphs 4 (a)(ii) and 5 of Article 76 are also invoked in respect of fixed points as outlined in Section 6 of this Executive Summary.

5. OUTSTANDING MARITIME DELIMITATIONS

5.1 The two coastal States wish to inform the Commission that the area of extended continental shelf in this Submission is not the subject of any dispute between them or any other State(s) pursuant to paragraph 2(a) of Annex I to the Rules of Procedure. Moreover, in the view of the two coastal States, the consideration of this Submission by the Commission will not prejudice matters relating to the delimitation of boundaries between them and any other State(s) pursuant to paragraph 2(b) of Annex I to the Rules of Procedure.

5.2 The two coastal States have agreed further to make this Submission without prejudice to the delimitation of maritime boundaries between them, pursuant to paragraph 4(a) of Annex I to the Rules of Procedure.

6. DETAILED DESCRIPTION OF THE OUTER LIMIT OF THE EXTENDED CONTINENTAL SHELF

Mascarene Plateau

- 6.1** The Mascarene Plateau is located in the southwest Indian Ocean to the east of Madagascar and is one of the few submerged marine features clearly visible from space. The Mascarene Plateau is dominated by a spectacular, geologically complex, composite seafloor high with an arcuate shape that extends on a south-south-easterly trend between latitude 4°S and 22° S. This remote and vast seafloor high is characterised by a series of plateaux, banks, shoals and islands, and is surmounted in the north by the granitic islands of the Republic of Seychelles and in the south by the Mascarene Islands, including the Island of Mauritius. The water depths in this region range on average from 8 m to 90 m, and drop to abyssal depths of 4000 m at its edges.
- 6.2** The Mascarene Plateau is a composite feature, composed of four major elevations and banks (Seychelles Bank, Correira Bank Rise, Saya de Malha Bank and Nazareth Bank), which evolved through a continuous process that began around 120 Ma with the onset of continental break-up of Gondwana followed by the separation of the African and Indian Plates, coupled with rifting of the western margin of India following the separation of Madagascar in the interval 83-75 Ma. The rapid northward movement of the Indian plate in the Palaeocene interval 61 Ma and the subsequent development of the Central Indian Ridge are believed to have resulted in the abandonment of these remnant micro-continental blocks that comprise the Mascarene Plateau. A later phase in the evolution of the Mascarene Plateau involved volcanic activity associated with the passage of the Réunion hotspot, a hotspot which lies under Réunion Island, which capped and had a significant bearing on the subsequent development of the Mascarene Plateau following the onset of the continental break-up and rifting process described above.

6.3 The two coastal States are of the view that the geological processes described above contributed to the formation of the Mascarene Plateau and the setting of the relevant landmasses of the two coastal States. Therefore the elevations and banks that make up the Mascarene Plateau are the submerged prolongation of the relevant landmasses of the two coastal States.

6.4 The outer limit of the extended continental shelf in the region of the Mascarene Plateau encloses an area of approximately 387,000 km² extending beyond 200 M from the territorial sea baselines of the two coastal States.

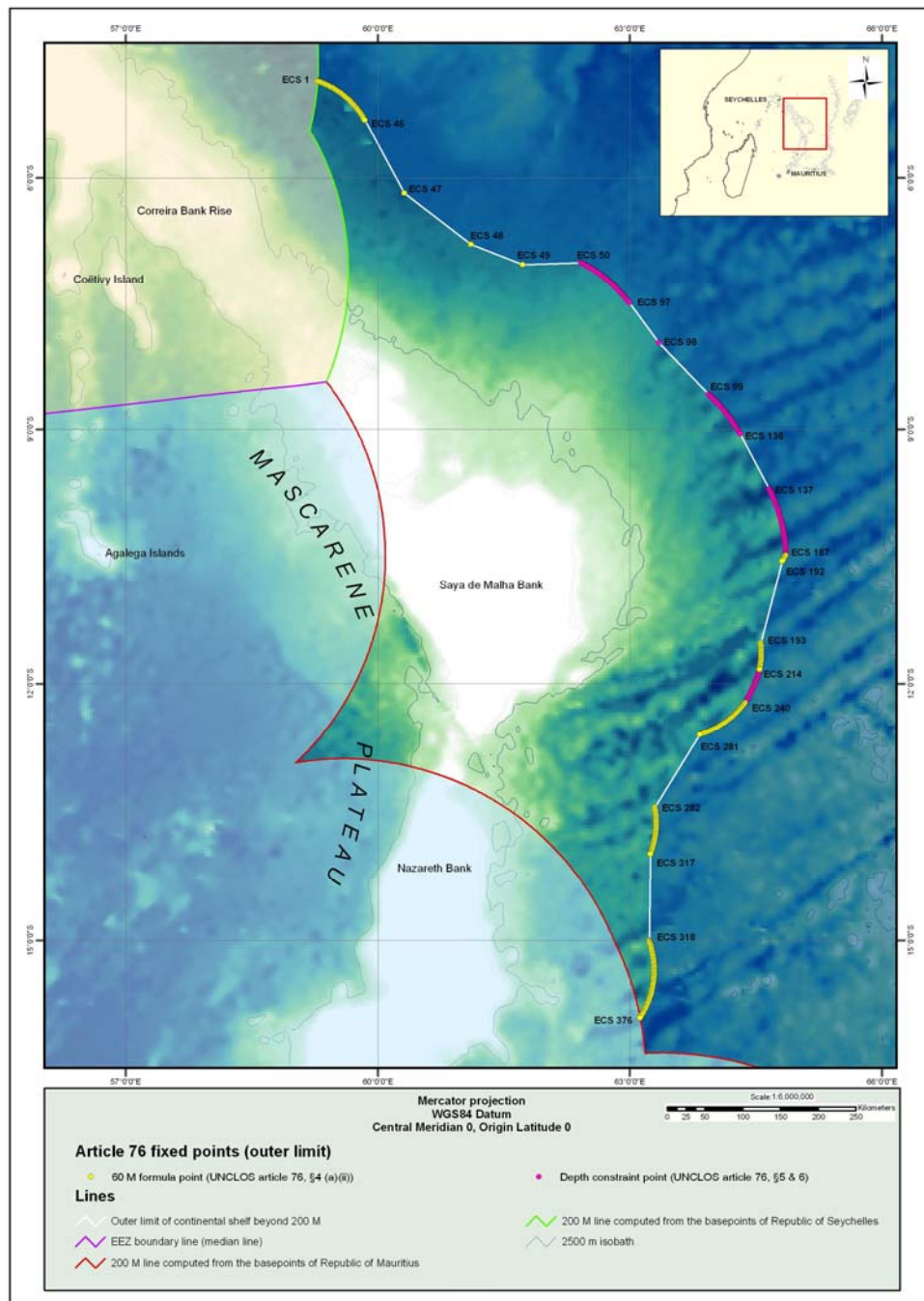
6.5 The final outer limit of the extended continental shelf in the region of the Mascarene Plateau determined by the two coastal States comprises 376 fixed points, of which:

- 208 are defined by arcs 60 M from the foot of the slope (Article 76, paragraph 4(a)(ii) of the Convention);
- 166 are defined by the constraint line 100 M from the 2500 metre isobath (Article 76, paragraph 5 of the Convention);
- 1 point (ECS 1), where the outer limit of the extended continental shelf intersects the line 200 M from the territorial sea baseline of the Republic of Seychelles, which forms the relevant part of the outer limit of extended continental shelf; and,
- 1 point (ECS 376), where the outer limit of the extended continental shelf intersects the line 200 M from the territorial sea baseline of the Republic of Mauritius, which forms the relevant part of the outer limit of the extended continental shelf.

- 6.6** Each successive pair of fixed points defining the outer limit of the extended continental shelf in the region of the Mascarene Plateau is connected by geodesics not exceeding 60 M in length in accordance with paragraph 5 of Article 76.
- 6.7** The list of Article 76 fixed points delineating the outer limit of the extended continental shelf in the region of the Mascarene Plateau is supplied by the two coastal States in two tables ([SMS-ES-ANNEX 1](#) and [SMS-ES-ANNEX 2](#)).
- 6.8** The two coastal States invoke Article 76 of the Convention, with particular reference to paragraphs 4(a)(ii), 4(b), 5 and 7, in support of this Submission.

7. COMMISSION MEMBERS WHO PROVIDED ADVICE ON THIS SUBMISSION

The two coastal States were assisted in the preparation of this Submission by Mr Michael Rosette, member of the Commission on the Limits of the Continental Shelf (2007-present), Mr Harald Brekke, member of the Commission on the Limits of the Continental Shelf (2002-present), Dr Galo Carrera, member of the Commission on the Limits of the Continental Shelf (2002-present) and by two former members of the Commission, Dr Andre Chan Chim Yuk (1998-2002) and, Dr Karl Hinz (1998-2002).



SMS-ES-MAP2 Map depicting the outer limit of the extended continental shelf in the region of the Mascarene Plateau and the Article 76 fixed points.

8. NOTE OF AUTHENTICATION

All maps, figures, charts and databases forming part of this Submission were prepared jointly by the two coastal States, by the Ministry of National Development of the Republic of Seychelles responsible for preparing such materials and for certifying their quality and reliability, and by the Mauritius Oceanography Institute, which has been entrusted by the Government of the Republic of Mauritius with responsibility for preparing such materials and certifying their quality and reliability.

SMS-ES-ANNEX 1

Table listing the fixed points defining the outer limit of the extended continental shelf (Decimal Degrees)

Point ID	Latitude (decimal deg°)	Longitude (decimal deg°)	Distance (M)	Article 76 criterion
ECS 1	-4.83840942	59.28253555	-	60 M distance criterion / Baseline +200M
ECS 2	-4.84380007	59.29825974	1.00	60 M distance criterion
ECS 3	-4.84935093	59.31394958	1.00	60 M distance criterion
ECS 4	-4.85533190	59.32947922	1.00	60 M distance criterion
ECS 5	-4.86139822	59.34497452	1.00	60 M distance criterion
ECS 6	-4.86781836	59.36033249	1.00	60 M distance criterion
ECS 7	-4.87443018	59.37561035	1.00	60 M distance criterion
ECS 8	-4.88125086	59.39078903	1.00	60 M distance criterion
ECS 9	-4.88844347	59.40579987	1.00	60 M distance criterion
ECS 10	-4.89581394	59.42072678	1.00	60 M distance criterion
ECS 11	-4.90351105	59.43548965	1.00	60 M distance criterion
ECS 12	-4.91124821	59.45022583	1.00	60 M distance criterion
ECS 13	-4.91947222	59.46470261	1.00	60 M distance criterion
ECS 14	-4.92774343	59.47915268	1.00	60 M distance criterion
ECS 15	-4.93642759	59.49335861	1.00	60 M distance criterion
ECS 16	-4.94515562	59.50753784	1.00	60 M distance criterion
ECS 17	-4.95434427	59.52142334	1.00	60 M distance criterion
ECS 18	-4.96365881	59.53522491	1.00	60 M distance criterion
ECS 19	-4.97306108	59.54896927	1.00	60 M distance criterion
ECS 20	-4.98286963	59.56242752	1.00	60 M distance criterion
ECS 21	-4.99280787	59.57579422	1.00	60 M distance criterion
ECS 22	-5.00303602	59.58893585	1.00	60 M distance criterion
ECS 23	-5.01340532	59.60196686	1.00	60 M distance criterion
ECS 24	-5.02407265	59.61475754	1.00	60 M distance criterion
ECS 25	-5.03495598	59.62736893	1.00	60 M distance criterion
ECS 26	-5.04590988	59.63991547	1.00	60 M distance criterion
ECS 27	-5.05727482	59.65209579	1.00	60 M distance criterion
ECS 28	-5.06871796	59.66419983	1.00	60 M distance criterion
ECS 29	-5.08027744	59.67619705	1.00	60 M distance criterion
ECS 30	-5.09225512	59.68777847	1.00	60 M distance criterion
ECS 31	-5.10423279	59.69935608	1.00	60 M distance criterion
ECS 32	-5.11643982	59.71069336	1.00	60 M distance criterion
ECS 33	-5.12892818	59.72172546	1.00	60 M distance criterion
ECS 34	-5.14142561	59.73274231	1.00	60 M distance criterion
ECS 35	-5.15423536	59.74339676	1.00	60 M distance criterion

Point ID	Latitude (decimal deg°)	Longitude (decimal deg°)	Distance (M)	Article 76 criterion
ECS 36	-5.16721344	59.75384903	1.00	60 M distance criterion
ECS 37	-5.18033123	59.76412201	1.00	60 M distance criterion
ECS 38	-5.19359636	59.77420807	1.00	60 M distance criterion
ECS 39	-5.20706606	59.78402328	1.00	60 M distance criterion
ECS 40	-5.22078753	59.79347610	1.00	60 M distance criterion
ECS 41	-5.23450851	59.80293655	1.00	60 M distance criterion
ECS 42	-5.24848032	59.81201935	1.00	60 M distance criterion
ECS 43	-5.26256227	59.82093048	1.00	60 M distance criterion
ECS 44	-5.27674294	59.82968521	1.00	60 M distance criterion
ECS 45	-5.29109049	59.83816528	1.00	60 M distance criterion
ECS 46	-5.30579758	59.84667206	1.02	60 M distance criterion
ECS 47	-6.18395185	60.31553650	59.46	60 M distance criterion
ECS 48	-6.79705572	61.10817719	59.84	60 M distance criterion
ECS 49	-7.03660917	61.72554016	39.52	60 M distance criterion
ECS 50	-7.01501700	62.41952600	41.42	Depth constraint point
ECS 51	-7.01823044	62.42565536	0.41	Depth constraint point
ECS 52	-7.02588987	62.44042206	0.99	Depth constraint point
ECS 53	-7.03373337	62.45508575	0.99	Depth constraint point
ECS 54	-7.04173565	62.46967316	0.99	Depth constraint point
ECS 55	-7.04986811	62.48418045	0.99	Depth constraint point
ECS 56	-7.05815649	62.49859619	0.99	Depth constraint point
ECS 57	-7.06654263	62.51296234	0.99	Depth constraint point
ECS 58	-7.07516575	62.52718735	0.99	Depth constraint point
ECS 59	-7.08378887	62.54140472	0.99	Depth constraint point
ECS 60	-7.09263420	62.55549240	0.99	Depth constraint point
ECS 61	-7.10161018	62.56949234	0.99	Depth constraint point
ECS 62	-7.11077881	62.58336639	0.99	Depth constraint point
ECS 63	-7.12004757	62.59717941	0.99	Depth constraint point
ECS 64	-7.12937164	62.61094666	0.99	Depth constraint point
ECS 65	-7.13896656	62.62453079	0.99	Depth constraint point
ECS 66	-7.14856005	62.63811493	0.99	Depth constraint point
ECS 67	-7.15833664	62.65156555	0.99	Depth constraint point
ECS 68	-7.16827631	62.66489792	0.99	Depth constraint point
ECS 69	-7.17833471	62.67813873	0.99	Depth constraint point
ECS 70	-7.18852806	62.69128036	0.99	Depth constraint point
ECS 71	-7.19880152	62.70435715	0.99	Depth constraint point
ECS 72	-7.20933008	62.71722412	0.99	Depth constraint point
ECS 73	-7.21988344	62.73007584	0.99	Depth constraint point
ECS 74	-7.23056412	62.74281693	0.99	Depth constraint point
ECS 75	-7.24143505	62.75539780	0.99	Depth constraint point
ECS 76	-7.25230551	62.76797867	0.99	Depth constraint point
ECS 77	-7.26338100	62.78037643	0.99	Depth constraint point
ECS 78	-7.27460098	62.79264832	0.99	Depth constraint point
ECS 79	-7.28583479	62.80490494	0.99	Depth constraint point

Point ID	Latitude (decimal deg°)	Longitude (decimal deg°)	Distance (M)	Article 76 criterion
ECS 80	-7.29748058	62.81676102	0.99	Depth constraint point
ECS 81	-7.30936480	62.82838821	0.99	Depth constraint point
ECS 82	-7.32124853	62.84001160	0.99	Depth constraint point
ECS 83	-7.33313179	62.85163498	0.99	Depth constraint point
ECS 84	-7.34501457	62.86325836	0.99	Depth constraint point
ECS 85	-7.35689688	62.87488174	0.99	Depth constraint point
ECS 86	-7.36877918	62.88650894	0.99	Depth constraint point
ECS 87	-7.38066101	62.89813232	0.99	Depth constraint point
ECS 88	-7.39291382	62.90935898	0.99	Depth constraint point
ECS 89	-7.40541935	62.92030716	0.99	Depth constraint point
ECS 90	-7.41792488	62.93125153	0.99	Depth constraint point
ECS 91	-7.43062210	62.94197464	0.99	Depth constraint point
ECS 92	-7.44340038	62.95260239	0.99	Depth constraint point
ECS 93	-7.45620298	62.96319580	0.99	Depth constraint point
ECS 94	-7.46922255	62.97352219	0.99	Depth constraint point
ECS 95	-7.48228645	62.98379135	0.99	Depth constraint point
ECS 96	-7.49544525	62.99393845	0.99	Depth constraint point
ECS 97	-7.49586153	62.99425507	0.03	Depth constraint point
ECS 98	-7.96983242	63.34769058	35.27	Depth constraint point
ECS 99	-8.58755779	63.93876648	50.96	Depth constraint point
ECS 100	-8.59870625	63.95106888	0.99	Depth constraint point
ECS 101	-8.60985374	63.96336746	0.99	Depth constraint point
ECS 102	-8.62100220	63.97566986	0.99	Depth constraint point
ECS 103	-8.63238144	63.98775101	0.99	Depth constraint point
ECS 104	-8.64388180	63.99972153	0.99	Depth constraint point
ECS 105	-8.65539169	64.01168060	0.99	Depth constraint point
ECS 106	-8.66719341	64.02334595	0.99	Depth constraint point
ECS 107	-8.67902279	64.03498840	0.99	Depth constraint point
ECS 108	-8.69090557	64.04656982	0.99	Depth constraint point
ECS 109	-8.70304775	64.05787659	0.99	Depth constraint point
ECS 110	-8.71518898	64.06918335	0.99	Depth constraint point
ECS 111	-8.72744274	64.08036804	0.99	Depth constraint point
ECS 112	-8.73987007	64.09136200	0.99	Depth constraint point
ECS 113	-8.75229645	64.10234833	0.99	Depth constraint point
ECS 114	-8.76490688	64.11312103	0.99	Depth constraint point
ECS 115	-8.77762890	64.12376404	0.99	Depth constraint point
ECS 116	-8.79039097	64.13435364	0.99	Depth constraint point
ECS 117	-8.80331135	64.14475250	0.99	Depth constraint point
ECS 118	-8.81631756	64.15503693	0.99	Depth constraint point
ECS 119	-8.82944393	64.16516876	0.99	Depth constraint point
ECS 120	-8.84262371	64.17522430	0.99	Depth constraint point
ECS 121	-8.85595703	64.18508148	0.99	Depth constraint point
ECS 122	-8.86939907	64.19478607	0.99	Depth constraint point
ECS 123	-8.88284016	64.20448303	0.99	Depth constraint point

Point ID	Latitude (decimal deg°)	Longitude (decimal deg°)	Distance (M)	Article 76 criterion
ECS 124	-8.89646626	64.21392059	0.99	Depth constraint point
ECS 125	-8.91013527	64.22328949	0.99	Depth constraint point
ECS 126	-8.92396545	64.23241425	0.99	Depth constraint point
ECS 127	-8.93795586	64.24129486	0.99	Depth constraint point
ECS 128	-8.95194626	64.25017548	0.99	Depth constraint point
ECS 129	-8.96593571	64.25905609	0.99	Depth constraint point
ECS 130	-8.97992420	64.26792908	0.99	Depth constraint point
ECS 131	-8.99407101	64.27655029	0.99	Depth constraint point
ECS 132	-9.00835133	64.28494263	0.99	Depth constraint point
ECS 133	-9.02272511	64.29317474	0.99	Depth constraint point
ECS 134	-9.03716373	64.30128479	0.99	Depth constraint point
ECS 135	-9.05166817	64.30928040	0.99	Depth constraint point
ECS 136	-9.05780029	64.31259155	0.42	Depth constraint point
ECS 137	-9.70979118	64.65947723	44.04	Depth constraint point
ECS 138	-9.72439289	64.66723633	0.99	Depth constraint point
ECS 139	-9.73910809	64.67476654	0.99	Depth constraint point
ECS 140	-9.75384045	64.68226624	0.99	Depth constraint point
ECS 141	-9.76865673	64.68959808	0.99	Depth constraint point
ECS 142	-9.78352833	64.69680786	0.99	Depth constraint point
ECS 143	-9.79851151	64.70377350	0.99	Depth constraint point
ECS 144	-9.81354713	64.71063232	0.99	Depth constraint point
ECS 145	-9.82862091	64.71739197	0.99	Depth constraint point
ECS 146	-9.84379196	64.72393799	0.99	Depth constraint point
ECS 147	-9.85899067	64.73040771	0.99	Depth constraint point
ECS 148	-9.87441635	64.73631287	0.99	Depth constraint point
ECS 149	-9.88984680	64.74219513	0.99	Depth constraint point
ECS 150	-9.90527725	64.74807739	0.99	Depth constraint point
ECS 151	-9.92070580	64.75395966	0.99	Depth constraint point
ECS 152	-9.93620110	64.75966644	0.99	Depth constraint point
ECS 153	-9.95171452	64.76531982	0.99	Depth constraint point
ECS 154	-9.96722507	64.77097321	0.98	Depth constraint point
ECS 155	-9.98284340	64.77631378	0.98	Depth constraint point
ECS 156	-9.99857426	64.78131104	0.98	Depth constraint point
ECS 157	-10.01432419	64.78623962	0.98	Depth constraint point
ECS 158	-10.03013229	64.79096985	0.98	Depth constraint point
ECS 159	-10.04597759	64.79557800	0.98	Depth constraint point
ECS 160	-10.06191826	64.79982758	0.98	Depth constraint point
ECS 161	-10.07788658	64.80397797	0.98	Depth constraint point
ECS 162	-10.09385204	64.80812073	0.98	Depth constraint point
ECS 163	-10.10981941	64.81226349	0.98	Depth constraint point
ECS 164	-10.12587929	64.81601715	0.98	Depth constraint point
ECS 165	-10.14196205	64.81966400	0.98	Depth constraint point
ECS 166	-10.15808487	64.82312012	0.98	Depth constraint point

Point ID	Latitude (decimal deg°)	Longitude (decimal deg°)	Distance (M)	Article 76 criterion
ECS 167	-10.17422962	64.82647705	0.98	Depth constraint point
ECS 168	-10.19042587	64.82955170	0.98	Depth constraint point
ECS 169	-10.20663643	64.83255768	0.98	Depth constraint point
ECS 170	-10.22290897	64.83517456	0.98	Depth constraint point
ECS 171	-10.23921394	64.83758545	0.98	Depth constraint point
ECS 172	-10.25551796	64.84000397	0.98	Depth constraint point
ECS 173	-10.27182102	64.84241486	0.98	Depth constraint point
ECS 174	-10.28812313	64.84482574	0.98	Depth constraint point
ECS 175	-10.30444908	64.84706879	0.98	Depth constraint point
ECS 176	-10.32082558	64.84888458	0.98	Depth constraint point
ECS 177	-10.33721066	64.85060883	0.98	Depth constraint point
ECS 178	-10.35361671	64.85209656	0.98	Depth constraint point
ECS 179	-10.37002945	64.85350037	0.98	Depth constraint point
ECS 180	-10.38646126	64.85465240	0.98	Depth constraint point
ECS 181	-10.40289688	64.85572815	0.98	Depth constraint point
ECS 182	-10.41934681	64.85655975	0.98	Depth constraint point
ECS 183	-10.43579769	64.85731506	0.98	Depth constraint point
ECS 184	-10.45225811	64.85781097	0.98	Depth constraint point
ECS 185	-10.46871948	64.85825348	0.98	Depth constraint point
ECS 186	-10.48518372	64.85841370	0.98	Depth constraint point
ECS 187	-10.49034309	64.85845184	0.31	Depth constraint point / 60 M distance criterion
ECS 188	-10.50459099	64.85011292	0.98	60 M distance criterion
ECS 189	-10.51866913	64.84148407	0.98	60 M distance criterion
ECS 190	-10.53257847	64.83258820	0.98	60 M distance criterion
ECS 191	-10.54637241	64.82350159	0.98	60 M distance criterion
ECS 192	-10.55698586	64.81651306	0.76	60 M distance criterion
ECS 193	-11.52409267	64.56047821	59.71	60 M distance criterion
ECS 194	-11.54041672	64.56215668	0.98	60 M distance criterion
ECS 195	-11.55674744	64.56372070	0.98	60 M distance criterion
ECS 196	-11.57311153	64.56489563	0.98	60 M distance criterion
ECS 197	-11.58948135	64.56593323	0.98	60 M distance criterion
ECS 198	-11.60587311	64.56656647	0.98	60 M distance criterion
ECS 199	-11.62226677	64.56704712	0.98	60 M distance criterion
ECS 200	-11.63866615	64.56697083	0.98	60 M distance criterion
ECS 201	-11.65506458	64.56675720	0.98	60 M distance criterion
ECS 202	-11.67146206	64.56653595	0.98	60 M distance criterion
ECS 203	-11.68785000	64.56603241	0.98	60 M distance criterion
ECS 204	-11.70421886	64.56507874	0.98	60 M distance criterion
ECS 205	-11.72057247	64.56390381	0.98	60 M distance criterion
ECS 206	-11.73690224	64.56241608	0.98	60 M distance criterion
ECS 207	-11.75320530	64.56068420	0.98	60 M distance criterion
ECS 208	-11.76947689	64.55867004	0.98	60 M distance criterion
ECS 209	-11.78572559	64.55648041	0.98	60 M distance criterion

Point ID	Latitude (decimal deg°)	Longitude (decimal deg°)	Distance (M)	Article 76 criterion
ECS 210	-11.80191517	64.55387878	0.98	60 M distance criterion
ECS 211	-11.81805992	64.55101776	0.98	60 M distance criterion
ECS 212	-11.83416557	64.54793549	0.98	60 M distance criterion
ECS 213	-11.83733463	64.54726410	0.19	60 M distance criterion
ECS 214	-11.85261917	64.54416656	0.93	60 M distance criterion / Depth constraint point
ECS 215	-11.86069202	64.54158783	0.51	Depth constraint point
ECS 216	-11.87630749	64.53654480	0.98	Depth constraint point
ECS 217	-11.89189434	64.53141785	0.98	Depth constraint point
ECS 218	-11.90740204	64.52604675	0.98	Depth constraint point
ECS 219	-11.92288780	64.52062225	0.98	Depth constraint point
ECS 220	-11.93828201	64.51493073	0.98	Depth constraint point
ECS 221	-11.95366669	64.50920868	0.98	Depth constraint point
ECS 222	-11.96895790	64.50325012	0.98	Depth constraint point
ECS 223	-11.98421669	64.49719238	0.98	Depth constraint point
ECS 224	-11.99936485	64.49087524	0.98	Depth constraint point
ECS 225	-12.01451111	64.48454285	0.98	Depth constraint point
ECS 226	-12.02954006	64.47793579	0.98	Depth constraint point
ECS 227	-12.04455280	64.47129059	0.98	Depth constraint point
ECS 228	-12.05947399	64.46443176	0.98	Depth constraint point
ECS 229	-12.07433414	64.45745087	0.98	Depth constraint point
ECS 230	-12.08911228	64.45028687	0.98	Depth constraint point
ECS 231	-12.10382843	64.44299316	0.98	Depth constraint point
ECS 232	-12.11851120	64.43563843	0.98	Depth constraint point
ECS 233	-12.13305855	64.42800903	0.98	Depth constraint point
ECS 234	-12.14757252	64.42031860	0.98	Depth constraint point
ECS 235	-12.16196156	64.41238403	0.98	Depth constraint point
ECS 236	-12.17634964	64.40445709	0.98	Depth constraint point
ECS 237	-12.19058418	64.39624023	0.98	Depth constraint point
ECS 238	-12.20479107	64.38798523	0.98	Depth constraint point
ECS 239	-12.21888733	64.37953186	0.98	Depth constraint point
ECS 240	-12.22777843	64.37413025	0.62	Depth constraint point / 60 M distance criterion
ECS 241	-12.24094582	64.36425781	0.98	60 M distance criterion
ECS 242	-12.25398064	64.35419464	0.98	60 M distance criterion
ECS 243	-12.26677513	64.34382629	0.98	60 M distance criterion
ECS 244	-12.27948284	64.33335114	0.98	60 M distance criterion
ECS 245	-12.29204082	64.32268524	0.98	60 M distance criterion
ECS 246	-12.30427361	64.31163788	0.98	60 M distance criterion
ECS 247	-12.31650639	64.30059814	0.98	60 M distance criterion
ECS 248	-12.32846546	64.28924561	0.98	60 M distance criterion
ECS 249	-12.34021187	64.27767181	0.98	60 M distance criterion
ECS 250	-12.35195637	64.26609039	0.98	60 M distance criterion
ECS 251	-12.36329174	64.25409698	0.98	60 M distance criterion

Point ID	Latitude (decimal deg°)	Longitude (decimal deg°)	Distance (M)	Article 76 criterion
ECS 252	-12.37451077	64.24199677	0.98	60 M distance criterion
ECS 253	-12.38570881	64.22986603	0.98	60 M distance criterion
ECS 254	-12.39640236	64.21727753	0.98	60 M distance criterion
ECS 255	-12.40708447	64.20468140	0.98	60 M distance criterion
ECS 256	-12.41761875	64.19195557	0.98	60 M distance criterion
ECS 257	-12.42774677	64.17889404	0.98	60 M distance criterion
ECS 258	-12.43786144	64.16582489	0.98	60 M distance criterion
ECS 259	-12.44763660	64.15248871	0.98	60 M distance criterion
ECS 260	-12.45722103	64.13900757	0.98	60 M distance criterion
ECS 261	-12.46651936	64.12532806	0.98	60 M distance criterion
ECS 262	-12.47565269	64.11152649	0.98	60 M distance criterion
ECS 263	-12.48465252	64.09764099	0.98	60 M distance criterion
ECS 264	-12.49325371	64.08349609	0.98	60 M distance criterion
ECS 265	-12.50185490	64.06934357	0.98	60 M distance criterion
ECS 266	-12.51006317	64.05496216	0.98	60 M distance criterion
ECS 267	-12.51811695	64.04048157	0.98	60 M distance criterion
ECS 268	-12.52579689	64.02579498	0.98	60 M distance criterion
ECS 269	-12.53335190	64.01103973	0.98	60 M distance criterion
ECS 270	-12.54072475	63.99619675	0.98	60 M distance criterion
ECS 271	-12.54777336	63.98118591	0.98	60 M distance criterion
ECS 272	-12.55458832	63.96606827	0.98	60 M distance criterion
ECS 273	-12.56110001	63.95080566	0.98	60 M distance criterion
ECS 274	-12.56753540	63.93551636	0.98	60 M distance criterion
ECS 275	-12.57355022	63.92004776	0.98	60 M distance criterion
ECS 276	-12.57945824	63.90453339	0.98	60 M distance criterion
ECS 277	-12.58494759	63.88886642	0.98	60 M distance criterion
ECS 278	-12.59038925	63.87317657	0.98	60 M distance criterion
ECS 279	-12.59536552	63.85733032	0.98	60 M distance criterion
ECS 280	-12.60031033	63.84147644	0.98	60 M distance criterion
ECS 281	-12.60260677	63.83364105	0.48	60 M distance criterion
ECS 282	-13.45272923	63.29983139	59.64	60 M distance criterion
ECS 283	-13.46877384	63.30266571	0.97	60 M distance criterion
ECS 284	-13.48485184	63.30528259	0.97	60 M distance criterion
ECS 285	-13.50096798	63.30764389	0.97	60 M distance criterion
ECS 286	-13.51712418	63.30968475	0.97	60 M distance criterion
ECS 287	-13.53329754	63.31155777	0.97	60 M distance criterion
ECS 288	-13.54950714	63.31306839	0.97	60 M distance criterion
ECS 289	-13.56573009	63.31440735	0.97	60 M distance criterion
ECS 290	-13.58197784	63.31537628	0.97	60 M distance criterion
ECS 291	-13.59823227	63.31617355	0.97	60 M distance criterion
ECS 292	-13.61449909	63.31661224	0.97	60 M distance criterion
ECS 293	-13.63076782	63.31686401	0.97	60 M distance criterion
ECS 294	-13.64703846	63.31676483	0.97	60 M distance criterion

Point ID	Latitude (decimal deg°)	Longitude (decimal deg°)	Distance (M)	Article 76 criterion
ECS 295	-13.66330433	63.31647110	0.97	60 M distance criterion
ECS 296	-13.67956066	63.31584549	0.97	60 M distance criterion
ECS 297	-13.69580555	63.31501007	0.97	60 M distance criterion
ECS 298	-13.71203232	63.31383896	0.97	60 M distance criterion
ECS 299	-13.72824001	63.31246567	0.97	60 M distance criterion
ECS 300	-13.74441910	63.31076813	0.97	60 M distance criterion
ECS 301	-13.76057529	63.30887604	0.97	60 M distance criterion
ECS 302	-13.77669621	63.30670166	0.97	60 M distance criterion
ECS 303	-13.79276752	63.30417633	0.97	60 M distance criterion
ECS 304	-13.80879974	63.30140686	0.97	60 M distance criterion
ECS 305	-13.82479477	63.29843140	0.97	60 M distance criterion
ECS 306	-13.84072685	63.29512405	0.97	60 M distance criterion
ECS 307	-13.85661793	63.29162598	0.97	60 M distance criterion
ECS 308	-13.87243462	63.28778839	0.97	60 M distance criterion
ECS 309	-13.88820744	63.28377914	0.97	60 M distance criterion
ECS 310	-13.90388966	63.27940750	0.97	60 M distance criterion
ECS 311	-13.91954517	63.27494431	0.97	60 M distance criterion
ECS 312	-13.93507481	63.27004623	0.97	60 M distance criterion
ECS 313	-13.95054817	63.26497269	0.97	60 M distance criterion
ECS 314	-13.96590328	63.25953293	0.97	60 M distance criterion
ECS 315	-13.98124027	63.25404358	0.97	60 M distance criterion
ECS 316	-13.99640083	63.24806595	0.97	60 M distance criterion
ECS 317	-14.00289249	63.24563217	0.41	60 M distance criterion
ECS 318	-15.00692177	63.23084259	59.99	60 M distance criterion
ECS 319	-15.01514149	63.23374176	0.52	60 M distance criterion
ECS 320	-15.03043652	63.23913193	0.97	60 M distance criterion
ECS 321	-15.04582310	63.24423981	0.97	60 M distance criterion
ECS 322	-15.06126881	63.24914932	0.97	60 M distance criterion
ECS 323	-15.07679749	63.25376892	0.97	60 M distance criterion
ECS 324	-15.09239864	63.25812149	0.97	60 M distance criterion
ECS 325	-15.10807133	63.26218796	0.97	60 M distance criterion
ECS 326	-15.12378788	63.26606750	0.97	60 M distance criterion
ECS 327	-15.13957787	63.26961136	0.97	60 M distance criterion
ECS 328	-15.15540314	63.27297211	0.97	60 M distance criterion
ECS 329	-15.17129326	63.27598953	0.97	60 M distance criterion
ECS 330	-15.18721390	63.27882004	0.97	60 M distance criterion
ECS 331	-15.20318699	63.28131104	0.97	60 M distance criterion
ECS 332	-15.21918583	63.28361130	0.97	60 M distance criterion
ECS 333	-15.23522568	63.28558350	0.97	60 M distance criterion
ECS 334	-15.25128078	63.28739929	0.97	60 M distance criterion
ECS 335	-15.26736832	63.28886795	0.96	60 M distance criterion
ECS 336	-15.28347969	63.29000854	0.96	60 M distance criterion
ECS 337	-15.29960346	63.29092789	0.96	60 M distance criterion

Point ID	Latitude (decimal deg°)	Longitude (decimal deg°)	Distance (M)	Article 76 criterion
ECS 338	-15.31573677	63.29160690	0.96	60 M distance criterion
ECS 339	-15.33187771	63.29200363	0.96	60 M distance criterion
ECS 340	-15.34802055	63.29213333	0.96	60 M distance criterion
ECS 341	-15.36416340	63.29200745	0.96	60 M distance criterion
ECS 342	-15.38029957	63.29158783	0.96	60 M distance criterion
ECS 343	-15.39642811	63.29093933	0.96	60 M distance criterion
ECS 344	-15.41253948	63.28997803	0.96	60 M distance criterion
ECS 345	-15.42863750	63.28879929	0.96	60 M distance criterion
ECS 346	-15.44470882	63.28731918	0.96	60 M distance criterion
ECS 347	-15.46075916	63.28560638	0.96	60 M distance criterion
ECS 348	-15.47676945	63.28355789	0.96	60 M distance criterion
ECS 349	-15.49275780	63.28133392	0.96	60 M distance criterion
ECS 350	-15.50869370	63.27875137	0.96	60 M distance criterion
ECS 351	-15.52460384	63.27600479	0.96	60 M distance criterion
ECS 352	-15.54044628	63.27289581	0.96	60 M distance criterion
ECS 353	-15.55626011	63.26962280	0.96	60 M distance criterion
ECS 354	-15.57199669	63.26598740	0.96	60 M distance criterion
ECS 355	-15.58769703	63.26219177	0.96	60 M distance criterion
ECS 356	-15.60332775	63.25811386	0.96	60 M distance criterion
ECS 357	-15.61889553	63.25378418	0.96	60 M distance criterion
ECS 358	-15.63435459	63.24906158	0.96	60 M distance criterion
ECS 359	-15.64977837	63.24422073	0.96	60 M distance criterion
ECS 360	-15.66510105	63.23905945	0.96	60 M distance criterion
ECS 361	-15.68035793	63.23369598	0.96	60 M distance criterion
ECS 362	-15.69553375	63.22809601	0.96	60 M distance criterion
ECS 363	-15.71062279	63.22225189	0.96	60 M distance criterion
ECS 364	-15.72556782	63.21602631	0.96	60 M distance criterion
ECS 365	-15.74043655	63.20961761	0.96	60 M distance criterion
ECS 366	-15.75523472	63.20303726	0.96	60 M distance criterion
ECS 367	-15.76987743	63.19609833	0.96	60 M distance criterion
ECS 368	-15.78447914	63.18907547	0.96	60 M distance criterion
ECS 369	-15.79887676	63.18161011	0.96	60 M distance criterion
ECS 370	-15.81327248	63.17414856	0.96	60 M distance criterion
ECS 371	-15.82742310	63.16619873	0.96	60 M distance criterion
ECS 372	-15.84156418	63.15823746	0.96	60 M distance criterion
ECS 373	-15.85544777	63.14980698	0.96	60 M distance criterion
ECS 374	-15.86928558	63.14130020	0.96	60 M distance criterion
ECS 375	-15.88301182	63.13260651	0.96	60 M distance criterion
ECS 376	-15.89663400	63.12362140	0.97	60 M distance criterion / Baseline + 200M

SMS-ES-ANNEX 2

Table listing the fixed points defining the outer limit of the extended continental shelf (Degrees, Minutes, Seconds)

Point	Latitude (deg°min´sec")	Longitude (deg°min´sec")	Distance (M)	Article 76 criterion
ECS 1	4° 50' 18.27" S	59° 16' 57.13" E	-	60 M distance criterion / Baseline +200M
ECS 2	4° 50' 37.68" S	59° 17' 53.74" E	1.00	60 M distance criterion
ECS 3	4° 50' 57.66" S	59° 18' 50.22" E	1.00	60 M distance criterion
ECS 4	4° 51' 19.19" S	59° 19' 46.13" E	1.00	60 M distance criterion
ECS 5	4° 51' 41.03" S	59° 20' 41.91" E	1.00	60 M distance criterion
ECS 6	4° 52' 4.15" S	59° 21' 37.20" E	1.00	60 M distance criterion
ECS 7	4° 52' 27.95" S	59° 22' 32.20" E	1.00	60 M distance criterion
ECS 8	4° 52' 52.50" S	59° 23' 26.84" E	1.00	60 M distance criterion
ECS 9	4° 53' 18.40" S	59° 24' 20.88" E	1.00	60 M distance criterion
ECS 10	4° 53' 44.93" S	59° 25' 14.62" E	1.00	60 M distance criterion
ECS 11	4° 54' 12.64" S	59° 26' 7.76" E	1.00	60 M distance criterion
ECS 12	4° 54' 40.49" S	59° 27' 0.81" E	1.00	60 M distance criterion
ECS 13	4° 55' 10.10" S	59° 27' 52.93" E	1.00	60 M distance criterion
ECS 14	4° 55' 39.88" S	59° 28' 44.95" E	1.00	60 M distance criterion
ECS 15	4° 56' 11.14" S	59° 29' 36.09" E	1.00	60 M distance criterion
ECS 16	4° 56' 42.56" S	59° 30' 27.14" E	1.00	60 M distance criterion
ECS 17	4° 57' 15.64" S	59° 31' 17.12" E	1.00	60 M distance criterion
ECS 18	4° 57' 49.17" S	59° 32' 6.81" E	1.00	60 M distance criterion
ECS 19	4° 58' 23.02" S	59° 32' 56.29" E	1.00	60 M distance criterion
ECS 20	4° 58' 58.33" S	59° 33' 44.74" E	1.00	60 M distance criterion
ECS 21	4° 59' 34.11" S	59° 34' 32.86" E	1.00	60 M distance criterion
ECS 22	5° 0' 10.93" S	59° 35' 20.17" E	1.00	60 M distance criterion
ECS 23	5° 0' 48.26" S	59° 36' 7.08" E	1.00	60 M distance criterion
ECS 24	5° 1' 26.66" S	59° 36' 53.13" E	1.00	60 M distance criterion
ECS 25	5° 2' 5.84" S	59° 37' 38.53" E	1.00	60 M distance criterion
ECS 26	5° 2' 45.28" S	59° 38' 23.70" E	1.00	60 M distance criterion
ECS 27	5° 3' 26.19" S	59° 39' 7.54" E	1.00	60 M distance criterion
ECS 28	5° 4' 7.38" S	59° 39' 51.12" E	1.00	60 M distance criterion
ECS 29	5° 4' 49.00" S	59° 40' 34.31" E	1.00	60 M distance criterion
ECS 30	5° 5' 32.12" S	59° 41' 16.00" E	1.00	60 M distance criterion
ECS 31	5° 6' 15.24" S	59° 41' 57.68" E	1.00	60 M distance criterion
ECS 32	5° 6' 59.18" S	59° 42' 38.50" E	1.00	60 M distance criterion
ECS 33	5° 7' 44.14" S	59° 43' 18.21" E	1.00	60 M distance criterion
ECS 34	5° 8' 29.13" S	59° 43' 57.87" E	1.00	60 M distance criterion
ECS 35	5° 9' 15.25" S	59° 44' 36.23" E	1.00	60 M distance criterion
ECS 36	5° 10' 1.97" S	59° 45' 13.86" E	1.00	60 M distance criterion
ECS 37	5° 10' 49.19" S	59° 45' 50.84" E	1.00	60 M distance criterion

Point	Latitude (deg°min´sec")	Longitude (deg°min´sec")	Distance (M)	Article 76 criterion
ECS 38	5° 11' 36.95" S	59° 46' 27.15" E	1.00	60 M distance criterion
ECS 39	5° 12' 25.44" S	59° 47' 2.48" E	1.00	60 M distance criterion
ECS 40	5° 13' 14.84" S	59° 47' 36.51" E	1.00	60 M distance criterion
ECS 41	5° 14' 4.23" S	59° 48' 10.57" E	1.00	60 M distance criterion
ECS 42	5° 14' 54.53" S	59° 48' 43.27" E	1.00	60 M distance criterion
ECS 43	5° 15' 45.22" S	59° 49' 15.35" E	1.00	60 M distance criterion
ECS 44	5° 16' 36.27" S	59° 49' 46.87" E	1.00	60 M distance criterion
ECS 45	5° 17' 27.93" S	59° 50' 17.40" E	1.00	60 M distance criterion
ECS 46	5° 18' 20.87" S	59° 50' 48.02" E	1.02	60 M distance criterion
ECS 47	6° 11' 2.23" S	60° 18' 55.93" E	59.46	60 M distance criterion
ECS 48	6° 47' 49.40" S	61° 6' 29.44" E	59.84	60 M distance criterion
ECS 49	7° 2' 11.79" S	61° 43' 31.94" E	39.52	60 M distance criterion
ECS 50	7° 0' 54.06" S	62° 25' 10.29" E	41.42	Depth constraint point
ECS 51	7° 1' 5.63" S	62° 25' 32.36" E	0.41	Depth constraint point
ECS 52	7° 1' 33.20" S	62° 26' 25.52" E	0.99	Depth constraint point
ECS 53	7° 2' 1.44" S	62° 27' 18.31" E	0.99	Depth constraint point
ECS 54	7° 2' 30.25" S	62° 28' 10.82" E	0.99	Depth constraint point
ECS 55	7° 2' 59.53" S	62° 29' 3.05" E	0.99	Depth constraint point
ECS 56	7° 3' 29.36" S	62° 29' 54.95" E	0.99	Depth constraint point
ECS 57	7° 3' 59.55" S	62° 30' 46.66" E	0.99	Depth constraint point
ECS 58	7° 4' 30.60" S	62° 31' 37.87" E	0.99	Depth constraint point
ECS 59	7° 5' 1.64" S	62° 32' 29.06" E	0.99	Depth constraint point
ECS 60	7° 5' 33.48" S	62° 33' 19.77" E	0.99	Depth constraint point
ECS 61	7° 6' 5.80" S	62° 34' 10.17" E	0.99	Depth constraint point
ECS 62	7° 6' 38.80" S	62° 35' 0.12" E	0.99	Depth constraint point
ECS 63	7° 7' 12.17" S	62° 35' 49.85" E	0.99	Depth constraint point
ECS 64	7° 7' 45.74" S	62° 36' 39.41" E	0.99	Depth constraint point
ECS 65	7° 8' 20.28" S	62° 37' 28.31" E	0.99	Depth constraint point
ECS 66	7° 8' 54.82" S	62° 38' 17.21" E	0.99	Depth constraint point
ECS 67	7° 9' 30.01" S	62° 39' 5.64" E	0.99	Depth constraint point
ECS 68	7° 10' 5.79" S	62° 39' 53.63" E	0.99	Depth constraint point
ECS 69	7° 10' 42.00" S	62° 40' 41.30" E	0.99	Depth constraint point
ECS 70	7° 11' 18.70" S	62° 41' 28.61" E	0.99	Depth constraint point
ECS 71	7° 11' 55.69" S	62° 42' 15.69" E	0.99	Depth constraint point
ECS 72	7° 12' 33.59" S	62° 43' 2.01" E	0.99	Depth constraint point
ECS 73	7° 13' 11.58" S	62° 43' 48.27" E	0.99	Depth constraint point
ECS 74	7° 13' 50.03" S	62° 44' 34.14" E	0.99	Depth constraint point
ECS 75	7° 14' 29.17" S	62° 45' 19.43" E	0.99	Depth constraint point
ECS 76	7° 15' 8.30" S	62° 46' 4.72" E	0.99	Depth constraint point
ECS 77	7° 15' 48.17" S	62° 46' 49.36" E	0.99	Depth constraint point
ECS 78	7° 16' 28.56" S	62° 47' 33.53" E	0.99	Depth constraint point
ECS 79	7° 17' 9.01" S	62° 48' 17.66" E	0.99	Depth constraint point
ECS 80	7° 17' 50.93" S	62° 49' 0.34" E	0.99	Depth constraint point
ECS 81	7° 18' 33.71" S	62° 49' 42.20" E	0.99	Depth constraint point

Point	Latitude (deg°min´sec")	Longitude (deg°min´sec")	Distance (M)	Article 76 criterion
ECS 82	7° 19' 16.49" S	62° 50' 24.04" E	0.99	Depth constraint point
ECS 83	7° 19' 59.27" S	62° 51' 5.89" E	0.99	Depth constraint point
ECS 84	7° 20' 42.05" S	62° 51' 47.73" E	0.99	Depth constraint point
ECS 85	7° 21' 24.83" S	62° 52' 29.57" E	0.99	Depth constraint point
ECS 86	7° 22' 7.61" S	62° 53' 11.43" E	0.99	Depth constraint point
ECS 87	7° 22' 50.38" S	62° 53' 53.28" E	0.99	Depth constraint point
ECS 88	7° 23' 34.49" S	62° 54' 33.69" E	0.99	Depth constraint point
ECS 89	7° 24' 19.51" S	62° 55' 13.11" E	0.99	Depth constraint point
ECS 90	7° 25' 4.53" S	62° 55' 52.51" E	0.99	Depth constraint point
ECS 91	7° 25' 50.24" S	62° 56' 31.11" E	0.99	Depth constraint point
ECS 92	7° 26' 36.24" S	62° 57' 9.37" E	0.99	Depth constraint point
ECS 93	7° 27' 22.33" S	62° 57' 47.50" E	0.99	Depth constraint point
ECS 94	7° 28' 9.20" S	62° 58' 24.68" E	0.99	Depth constraint point
ECS 95	7° 28' 56.23" S	62° 59' 1.65" E	0.99	Depth constraint point
ECS 96	7° 29' 43.60" S	62° 59' 38.18" E	0.99	Depth constraint point
ECS 97	7° 29' 45.10" S	62° 59' 39.32" E	0.03	Depth constraint point
ECS 98	7° 58' 11.40" S	63° 20' 51.69" E	35.27	Depth constraint point
ECS 99	8° 35' 15.21" S	63° 56' 19.56" E	50.96	Depth constraint point
ECS 100	8° 35' 55.34" S	63° 57' 3.85" E	0.99	Depth constraint point
ECS 101	8° 36' 35.47" S	63° 57' 48.12" E	0.99	Depth constraint point
ECS 102	8° 37' 15.61" S	63° 58' 32.41" E	0.99	Depth constraint point
ECS 103	8° 37' 56.57" S	63° 59' 15.90" E	0.99	Depth constraint point
ECS 104	8° 38' 37.97" S	63° 59' 59.00" E	0.99	Depth constraint point
ECS 105	8° 39' 19.41" S	64° 0' 42.05" E	0.99	Depth constraint point
ECS 106	8° 40' 1.90" S	64° 1' 24.05" E	0.99	Depth constraint point
ECS 107	8° 40' 44.48" S	64° 2' 5.96" E	0.99	Depth constraint point
ECS 108	8° 41' 27.26" S	64° 2' 47.65" E	0.99	Depth constraint point
ECS 109	8° 42' 10.97" S	64° 3' 28.36" E	0.99	Depth constraint point
ECS 110	8° 42' 54.68" S	64° 4' 9.06" E	0.99	Depth constraint point
ECS 111	8° 43' 38.79" S	64° 4' 49.32" E	0.99	Depth constraint point
ECS 112	8° 44' 23.53" S	64° 5' 28.90" E	0.99	Depth constraint point
ECS 113	8° 45' 8.27" S	64° 6' 8.45" E	0.99	Depth constraint point
ECS 114	8° 45' 53.66" S	64° 6' 47.24" E	0.99	Depth constraint point
ECS 115	8° 46' 39.46" S	64° 7' 25.55" E	0.99	Depth constraint point
ECS 116	8° 47' 25.41" S	64° 8' 3.67" E	0.99	Depth constraint point
ECS 117	8° 48' 11.92" S	64° 8' 41.11" E	0.99	Depth constraint point
ECS 118	8° 48' 58.74" S	64° 9' 18.13" E	0.99	Depth constraint point
ECS 119	8° 49' 46.00" S	64° 9' 54.61" E	0.99	Depth constraint point
ECS 120	8° 50' 33.45" S	64° 10' 30.81" E	0.99	Depth constraint point
ECS 121	8° 51' 21.45" S	64° 11' 6.29" E	0.99	Depth constraint point
ECS 122	8° 52' 9.84" S	64° 11' 41.23" E	0.99	Depth constraint point
ECS 123	8° 52' 58.22" S	64° 12' 16.14" E	0.99	Depth constraint point
ECS 124	8° 53' 47.28" S	64° 12' 50.11" E	0.99	Depth constraint point
ECS 125	8° 54' 36.49" S	64° 13' 23.84" E	0.99	Depth constraint point

Point	Latitude (deg°min´sec")	Longitude (deg°min´sec")	Distance (M)	Article 76 criterion
ECS 126	8° 55' 26.28" S	64° 13' 56.69" E	0.99	Depth constraint point
ECS 127	8° 56' 16.64" S	64° 14' 28.66" E	0.99	Depth constraint point
ECS 128	8° 57' 7.01" S	64° 15' 0.63" E	0.99	Depth constraint point
ECS 129	8° 57' 57.37" S	64° 15' 32.60" E	0.99	Depth constraint point
ECS 130	8° 58' 47.73" S	64° 16' 4.54" E	0.99	Depth constraint point
ECS 131	8° 59' 38.66" S	64° 16' 35.58" E	0.99	Depth constraint point
ECS 132	9° 0' 30.06" S	64° 17' 5.79" E	0.99	Depth constraint point
ECS 133	9° 1' 21.81" S	64° 17' 35.43" E	0.99	Depth constraint point
ECS 134	9° 2' 13.79" S	64° 18' 4.63" E	0.99	Depth constraint point
ECS 135	9° 3' 6.01" S	64° 18' 33.41" E	0.99	Depth constraint point
ECS 136	9° 3' 28.08" S	64° 18' 45.33" E	0.42	Depth constraint point
ECS 137	9° 42' 35.25" S	64° 39' 34.12" E	44.04	Depth constraint point
ECS 138	9° 43' 27.81" S	64° 40' 2.05" E	0.99	Depth constraint point
ECS 139	9° 44' 20.79" S	64° 40' 29.16" E	0.99	Depth constraint point
ECS 140	9° 45' 13.83" S	64° 40' 56.16" E	0.99	Depth constraint point
ECS 141	9° 46' 7.16" S	64° 41' 22.55" E	0.99	Depth constraint point
ECS 142	9° 47' 0.70" S	64° 41' 48.51" E	0.99	Depth constraint point
ECS 143	9° 47' 54.64" S	64° 42' 13.58" E	0.99	Depth constraint point
ECS 144	9° 48' 48.77" S	64° 42' 38.28" E	0.99	Depth constraint point
ECS 145	9° 49' 43.04" S	64° 43' 2.61" E	0.99	Depth constraint point
ECS 146	9° 50' 37.65" S	64° 43' 26.18" E	0.99	Depth constraint point
ECS 147	9° 51' 32.37" S	64° 43' 49.47" E	0.99	Depth constraint point
ECS 148	9° 52' 27.90" S	64° 44' 10.73" E	0.99	Depth constraint point
ECS 149	9° 53' 23.45" S	64° 44' 31.90" E	0.99	Depth constraint point
ECS 150	9° 54' 19.00" S	64° 44' 53.08" E	0.99	Depth constraint point
ECS 151	9° 55' 14.54" S	64° 45' 14.25" E	0.99	Depth constraint point
ECS 152	9° 56' 10.32" S	64° 45' 34.80" E	0.99	Depth constraint point
ECS 153	9° 57' 6.17" S	64° 45' 55.15" E	0.99	Depth constraint point
ECS 154	9° 58' 2.01" S	64° 46' 15.50" E	0.98	Depth constraint point
ECS 155	9° 58' 58.24" S	64° 46' 34.73" E	0.98	Depth constraint point
ECS 156	9° 59' 54.87" S	64° 46' 52.72" E	0.98	Depth constraint point
ECS 157	10° 0' 51.57" S	64° 47' 10.46" E	0.98	Depth constraint point
ECS 158	10° 1' 48.48" S	64° 47' 27.49" E	0.98	Depth constraint point
ECS 159	10° 2' 45.52" S	64° 47' 44.08" E	0.98	Depth constraint point
ECS 160	10° 3' 42.91" S	64° 47' 59.38" E	0.98	Depth constraint point
ECS 161	10° 4' 40.39" S	64° 48' 14.32" E	0.98	Depth constraint point
ECS 162	10° 5' 37.87" S	64° 48' 29.23" E	0.98	Depth constraint point
ECS 163	10° 6' 35.35" S	64° 48' 44.15" E	0.98	Depth constraint point
ECS 164	10° 7' 33.17" S	64° 48' 57.66" E	0.98	Depth constraint point
ECS 165	10° 8' 31.06" S	64° 49' 10.79" E	0.98	Depth constraint point
ECS 166	10° 9' 29.11" S	64° 49' 23.23" E	0.98	Depth constraint point
ECS 167	10° 10' 27.23" S	64° 49' 35.32" E	0.98	Depth constraint point
ECS 168	10° 11' 25.53" S	64° 49' 46.39" E	0.98	Depth constraint point
ECS 169	10° 12' 23.89" S	64° 49' 57.21" E	0.98	Depth constraint point

Point	Latitude (deg°min´sec")	Longitude (deg°min´sec")	Distance (M)	Article 76 criterion
ECS 170	10° 13' 22.47" S	64° 50' 6.63" E	0.98	Depth constraint point
ECS 171	10° 14' 21.17" S	64° 50' 15.31" E	0.98	Depth constraint point
ECS 172	10° 15' 19.86" S	64° 50' 24.01" E	0.98	Depth constraint point
ECS 173	10° 16' 18.56" S	64° 50' 32.69" E	0.98	Depth constraint point
ECS 174	10° 17' 17.24" S	64° 50' 41.37" E	0.98	Depth constraint point
ECS 175	10° 18' 16.02" S	64° 50' 49.45" E	0.98	Depth constraint point
ECS 176	10° 19' 14.97" S	64° 50' 55.98" E	0.98	Depth constraint point
ECS 177	10° 20' 13.96" S	64° 51' 2.19" E	0.98	Depth constraint point
ECS 178	10° 21' 13.02" S	64° 51' 7.55" E	0.98	Depth constraint point
ECS 179	10° 22' 12.11" S	64° 51' 12.60" E	0.98	Depth constraint point
ECS 180	10° 23' 11.26" S	64° 51' 16.75" E	0.98	Depth constraint point
ECS 181	10° 24' 10.43" S	64° 51' 20.62" E	0.98	Depth constraint point
ECS 182	10° 25' 9.65" S	64° 51' 23.62" E	0.98	Depth constraint point
ECS 183	10° 26' 8.87" S	64° 51' 26.33" E	0.98	Depth constraint point
ECS 184	10° 27' 8.13" S	64° 51' 28.12" E	0.98	Depth constraint point
ECS 185	10° 28' 7.39" S	64° 51' 29.71" E	0.98	Depth constraint point
ECS 186	10° 29' 6.66" S	64° 51' 30.29" E	0.98	Depth constraint point
ECS 187	10° 29' 25.24" S	64° 51' 30.43" E	0.31	Depth constraint point / 60 M distance criterion
ECS 188	10° 30' 16.53" S	64° 51' 0.41" E	0.98	60 M distance criterion
ECS 189	10° 31' 7.21" S	64° 50' 29.34" E	0.98	60 M distance criterion
ECS 190	10° 31' 57.28" S	64° 49' 57.32" E	0.98	60 M distance criterion
ECS 191	10° 32' 46.94" S	64° 49' 24.61" E	0.98	60 M distance criterion
ECS 192	10° 33' 25.15" S	64° 48' 59.45" E	0.76	60 M distance criterion
ECS 193	11° 31' 26.73" S	64° 33' 37.72" E	59.71	60 M distance criterion
ECS 194	11° 32' 25.50" S	64° 33' 43.76" E	0.98	60 M distance criterion
ECS 195	11° 33' 24.29" S	64° 33' 49.39" E	0.98	60 M distance criterion
ECS 196	11° 34' 23.20" S	64° 33' 53.62" E	0.98	60 M distance criterion
ECS 197	11° 35' 22.13" S	64° 33' 57.36" E	0.98	60 M distance criterion
ECS 198	11° 36' 21.14" S	64° 33' 59.64" E	0.98	60 M distance criterion
ECS 199	11° 37' 20.16" S	64° 34' 1.37" E	0.98	60 M distance criterion
ECS 200	11° 38' 19.20" S	64° 34' 1.09" E	0.98	60 M distance criterion
ECS 201	11° 39' 18.23" S	64° 34' 0.33" E	0.98	60 M distance criterion
ECS 202	11° 40' 17.26" S	64° 33' 59.53" E	0.98	60 M distance criterion
ECS 203	11° 41' 16.26" S	64° 33' 57.72" E	0.98	60 M distance criterion
ECS 204	11° 42' 15.19" S	64° 33' 54.28" E	0.98	60 M distance criterion
ECS 205	11° 43' 14.06" S	64° 33' 50.05" E	0.98	60 M distance criterion
ECS 206	11° 44' 12.85" S	64° 33' 44.70" E	0.98	60 M distance criterion
ECS 207	11° 45' 11.54" S	64° 33' 38.46" E	0.98	60 M distance criterion
ECS 208	11° 46' 10.12" S	64° 33' 31.21" E	0.98	60 M distance criterion
ECS 209	11° 47' 8.61" S	64° 33' 23.33" E	0.98	60 M distance criterion
ECS 210	11° 48' 6.89" S	64° 33' 13.96" E	0.98	60 M distance criterion
ECS 211	11° 49' 5.02" S	64° 33' 3.66" E	0.98	60 M distance criterion
ECS 212	11° 50' 3.00" S	64° 32' 52.57" E	0.98	60 M distance criterion
ECS 213	11° 50' 14.40" S	64° 32' 50.15" E	0.19	60 M distance criterion

Point	Latitude (deg°min´sec")	Longitude (deg°min´sec")	Distance (M)	Article 76 criterion
ECS 214	11° 51' 9.43" S	64° 32' 39.00" E	0.93	60 M distance criterion / Depth constraint point
ECS 215	11° 51' 38.49" S	64° 32' 29.72" E	0.51	Depth constraint point
ECS 216	11° 52' 34.71" S	64° 32' 11.56" E	0.98	Depth constraint point
ECS 217	11° 53' 30.82" S	64° 31' 53.10" E	0.98	Depth constraint point
ECS 218	11° 54' 26.65" S	64° 31' 33.77" E	0.98	Depth constraint point
ECS 219	11° 55' 22.40" S	64° 31' 14.24" E	0.98	Depth constraint point
ECS 220	11° 56' 17.82" S	64° 30' 53.75" E	0.98	Depth constraint point
ECS 221	11° 57' 13.20" S	64° 30' 33.15" E	0.98	Depth constraint point
ECS 222	11° 58' 8.25" S	64° 30' 11.70" E	0.98	Depth constraint point
ECS 223	11° 59' 3.18" S	64° 29' 49.89" E	0.98	Depth constraint point
ECS 224	11° 59' 57.71" S	64° 29' 27.15" E	0.98	Depth constraint point
ECS 225	12° 0' 52.24" S	64° 29' 4.35" E	0.98	Depth constraint point
ECS 226	12° 1' 46.34" S	64° 28' 40.57" E	0.98	Depth constraint point
ECS 227	12° 2' 40.39" S	64° 28' 16.65" E	0.98	Depth constraint point
ECS 228	12° 3' 34.11" S	64° 27' 51.95" E	0.98	Depth constraint point
ECS 229	12° 4' 27.60" S	64° 27' 26.82" E	0.98	Depth constraint point
ECS 230	12° 5' 20.80" S	64° 27' 1.03" E	0.98	Depth constraint point
ECS 231	12° 6' 13.78" S	64° 26' 34.78" E	0.98	Depth constraint point
ECS 232	12° 7' 6.64" S	64° 26' 8.30" E	0.98	Depth constraint point
ECS 233	12° 7' 59.01" S	64° 25' 40.83" E	0.98	Depth constraint point
ECS 234	12° 8' 51.26" S	64° 25' 13.15" E	0.98	Depth constraint point
ECS 235	12° 9' 43.06" S	64° 24' 44.58" E	0.98	Depth constraint point
ECS 236	12° 10' 34.86" S	64° 24' 16.05" E	0.98	Depth constraint point
ECS 237	12° 11' 26.10" S	64° 23' 46.46" E	0.98	Depth constraint point
ECS 238	12° 12' 17.25" S	64° 23' 16.75" E	0.98	Depth constraint point
ECS 239	12° 13' 7.99" S	64° 22' 46.31" E	0.98	Depth constraint point
ECS 240	12° 13' 40.00" S	64° 22' 26.87" E	0.62	Depth constraint point / 60 M distance criterion
ECS 241	12° 14' 27.40" S	64° 21' 51.33" E	0.98	60 M distance criterion
ECS 242	12° 15' 14.33" S	64° 21' 15.10" E	0.98	60 M distance criterion
ECS 243	12° 16' 0.39" S	64° 20' 37.77" E	0.98	60 M distance criterion
ECS 244	12° 16' 46.14" S	64° 20' 0.06" E	0.98	60 M distance criterion
ECS 245	12° 17' 31.35" S	64° 19' 21.67" E	0.98	60 M distance criterion
ECS 246	12° 18' 15.38" S	64° 18' 41.90" E	0.98	60 M distance criterion
ECS 247	12° 18' 59.42" S	64° 18' 2.15" E	0.98	60 M distance criterion
ECS 248	12° 19' 42.48" S	64° 17' 21.28" E	0.98	60 M distance criterion
ECS 249	12° 20' 24.76" S	64° 16' 39.62" E	0.98	60 M distance criterion
ECS 250	12° 21' 7.04" S	64° 15' 57.93" E	0.98	60 M distance criterion
ECS 251	12° 21' 47.85" S	64° 15' 14.75" E	0.98	60 M distance criterion
ECS 252	12° 22' 28.24" S	64° 14' 31.19" E	0.98	60 M distance criterion
ECS 253	12° 23' 8.55" S	64° 13' 47.52" E	0.98	60 M distance criterion
ECS 254	12° 23' 47.05" S	64° 13' 2.20" E	0.98	60 M distance criterion
ECS 255	12° 24' 25.50" S	64° 12' 16.85" E	0.98	60 M distance criterion
ECS 256	12° 25' 3.43" S	64° 11' 31.04" E	0.98	60 M distance criterion

Point	Latitude (deg°min´sec")	Longitude (deg°min´sec")	Distance (M)	Article 76 criterion
ECS 257	12° 25' 39.89" S	64° 10' 44.02" E	0.98	60 M distance criterion
ECS 258	12° 26' 16.30" S	64° 9' 56.97" E	0.98	60 M distance criterion
ECS 259	12° 26' 51.49" S	64° 9' 8.96" E	0.98	60 M distance criterion
ECS 260	12° 27' 26.00" S	64° 8' 20.43" E	0.98	60 M distance criterion
ECS 261	12° 27' 59.47" S	64° 7' 31.18" E	0.98	60 M distance criterion
ECS 262	12° 28' 32.35" S	64° 6' 41.50" E	0.98	60 M distance criterion
ECS 263	12° 29' 4.75" S	64° 5' 51.51" E	0.98	60 M distance criterion
ECS 264	12° 29' 35.71" S	64° 5' 0.59" E	0.98	60 M distance criterion
ECS 265	12° 30' 6.68" S	64° 4' 9.64" E	0.98	60 M distance criterion
ECS 266	12° 30' 36.23" S	64° 3' 17.86" E	0.98	60 M distance criterion
ECS 267	12° 31' 5.22" S	64° 2' 25.73" E	0.98	60 M distance criterion
ECS 268	12° 31' 32.87" S	64° 1' 32.86" E	0.98	60 M distance criterion
ECS 269	12° 32' 0.07" S	64° 0' 39.74" E	0.98	60 M distance criterion
ECS 270	12° 32' 26.61" S	63° 59' 46.31" E	0.98	60 M distance criterion
ECS 271	12° 32' 51.98" S	63° 58' 52.27" E	0.98	60 M distance criterion
ECS 272	12° 33' 16.52" S	63° 57' 57.85" E	0.98	60 M distance criterion
ECS 273	12° 33' 39.96" S	63° 57' 2.90" E	0.98	60 M distance criterion
ECS 274	12° 34' 3.13" S	63° 56' 7.86" E	0.98	60 M distance criterion
ECS 275	12° 34' 24.78" S	63° 55' 12.17" E	0.98	60 M distance criterion
ECS 276	12° 34' 46.05" S	63° 54' 16.32" E	0.98	60 M distance criterion
ECS 277	12° 35' 5.81" S	63° 53' 19.92" E	0.98	60 M distance criterion
ECS 278	12° 35' 25.40" S	63° 52' 23.44" E	0.98	60 M distance criterion
ECS 279	12° 35' 43.32" S	63° 51' 26.39" E	0.98	60 M distance criterion
ECS 280	12° 36' 1.12" S	63° 50' 29.32" E	0.98	60 M distance criterion
ECS 281	12° 36' 9.38" S	63° 50' 1.11" E	0.48	60 M distance criterion
ECS 282	13° 27' 9.83" S	63° 17' 59.39" E	59.64	60 M distance criterion
ECS 283	13° 28' 7.59" S	63° 18' 9.60" E	0.97	60 M distance criterion
ECS 284	13° 29' 5.47" S	63° 18' 19.02" E	0.97	60 M distance criterion
ECS 285	13° 30' 3.48" S	63° 18' 27.52" E	0.97	60 M distance criterion
ECS 286	13° 31' 1.65" S	63° 18' 34.87" E	0.97	60 M distance criterion
ECS 287	13° 31' 59.87" S	63° 18' 41.61" E	0.97	60 M distance criterion
ECS 288	13° 32' 58.23" S	63° 18' 47.05" E	0.97	60 M distance criterion
ECS 289	13° 33' 56.63" S	63° 18' 51.87" E	0.97	60 M distance criterion
ECS 290	13° 34' 55.12" S	63° 18' 55.35" E	0.97	60 M distance criterion
ECS 291	13° 35' 53.64" S	63° 18' 58.22" E	0.97	60 M distance criterion
ECS 292	13° 36' 52.20" S	63° 18' 59.80" E	0.97	60 M distance criterion
ECS 293	13° 37' 50.76" S	63° 19' 0.71" E	0.97	60 M distance criterion
ECS 294	13° 38' 49.34" S	63° 19' 0.35" E	0.97	60 M distance criterion
ECS 295	13° 39' 47.90" S	63° 18' 59.30" E	0.97	60 M distance criterion
ECS 296	13° 40' 46.42" S	63° 18' 57.04" E	0.97	60 M distance criterion
ECS 297	13° 41' 44.90" S	63° 18' 54.04" E	0.97	60 M distance criterion
ECS 298	13° 42' 43.32" S	63° 18' 49.82" E	0.97	60 M distance criterion
ECS 299	13° 43' 41.66" S	63° 18' 44.88" E	0.97	60 M distance criterion
ECS 300	13° 44' 39.91" S	63° 18' 38.77" E	0.97	60 M distance criterion
ECS 301	13° 45' 38.07" S	63° 18' 31.95" E	0.97	60 M distance criterion

Point	Latitude (deg°min´sec")	Longitude (deg°min´sec")	Distance (M)	Article 76 criterion
ECS 302	13° 46' 36.11" S	63° 18' 24.13" E	0.97	60 M distance criterion
ECS 303	13° 47' 33.96" S	63° 18' 15.03" E	0.97	60 M distance criterion
ECS 304	13° 48' 31.68" S	63° 18' 5.06" E	0.97	60 M distance criterion
ECS 305	13° 49' 29.26" S	63° 17' 54.35" E	0.97	60 M distance criterion
ECS 306	13° 50' 26.62" S	63° 17' 42.45" E	0.97	60 M distance criterion
ECS 307	13° 51' 23.82" S	63° 17' 29.85" E	0.97	60 M distance criterion
ECS 308	13° 52' 20.76" S	63° 17' 16.04" E	0.97	60 M distance criterion
ECS 309	13° 53' 17.55" S	63° 17' 1.60" E	0.97	60 M distance criterion
ECS 310	13° 54' 14.00" S	63° 16' 45.87" E	0.97	60 M distance criterion
ECS 311	13° 55' 10.36" S	63° 16' 29.80" E	0.97	60 M distance criterion
ECS 312	13° 56' 6.27" S	63° 16' 12.17" E	0.97	60 M distance criterion
ECS 313	13° 57' 1.97" S	63° 15' 53.90" E	0.97	60 M distance criterion
ECS 314	13° 57' 57.25" S	63° 15' 34.32" E	0.97	60 M distance criterion
ECS 315	13° 58' 52.46" S	63° 15' 14.56" E	0.97	60 M distance criterion
ECS 316	13° 59' 47.04" S	63° 14' 53.04" E	0.97	60 M distance criterion
ECS 317	14° 0' 10.41" S	63° 14' 44.28" E	0.41	60 M distance criterion
ECS 318	15° 0' 24.92" S	63° 13' 51.03" E	59.99	60 M distance criterion
ECS 319	15° 0' 54.51" S	63° 14' 1.47" E	0.52	60 M distance criterion
ECS 320	15° 1' 49.57" S	63° 14' 20.87" E	0.97	60 M distance criterion
ECS 321	15° 2' 44.96" S	63° 14' 39.26" E	0.97	60 M distance criterion
ECS 322	15° 3' 40.57" S	63° 14' 56.94" E	0.97	60 M distance criterion
ECS 323	15° 4' 36.47" S	63° 15' 13.57" E	0.97	60 M distance criterion
ECS 324	15° 5' 32.64" S	63° 15' 29.24" E	0.97	60 M distance criterion
ECS 325	15° 6' 29.06" S	63° 15' 43.88" E	0.97	60 M distance criterion
ECS 326	15° 7' 25.64" S	63° 15' 57.84" E	0.97	60 M distance criterion
ECS 327	15° 8' 22.48" S	63° 16' 10.60" E	0.97	60 M distance criterion
ECS 328	15° 9' 19.45" S	63° 16' 22.70" E	0.97	60 M distance criterion
ECS 329	15° 10' 16.66" S	63° 16' 33.56" E	0.97	60 M distance criterion
ECS 330	15° 11' 13.97" S	63° 16' 43.75" E	0.97	60 M distance criterion
ECS 331	15° 12' 11.47" S	63° 16' 52.72" E	0.97	60 M distance criterion
ECS 332	15° 13' 9.07" S	63° 17' 1.00" E	0.97	60 M distance criterion
ECS 333	15° 14' 6.81" S	63° 17' 8.10" E	0.97	60 M distance criterion
ECS 334	15° 15' 4.61" S	63° 17' 14.64" E	0.97	60 M distance criterion
ECS 335	15° 16' 2.53" S	63° 17' 19.92" E	0.96	60 M distance criterion
ECS 336	15° 17' 0.53" S	63° 17' 24.03" E	0.96	60 M distance criterion
ECS 337	15° 17' 58.57" S	63° 17' 27.34" E	0.96	60 M distance criterion
ECS 338	15° 18' 56.65" S	63° 17' 29.78" E	0.96	60 M distance criterion
ECS 339	15° 19' 54.76" S	63° 17' 31.21" E	0.96	60 M distance criterion
ECS 340	15° 20' 52.87" S	63° 17' 31.68" E	0.96	60 M distance criterion
ECS 341	15° 21' 50.99" S	63° 17' 31.23" E	0.96	60 M distance criterion
ECS 342	15° 22' 49.08" S	63° 17' 29.72" E	0.96	60 M distance criterion
ECS 343	15° 23' 47.14" S	63° 17' 27.38" E	0.96	60 M distance criterion
ECS 344	15° 24' 45.14" S	63° 17' 23.92" E	0.96	60 M distance criterion
ECS 345	15° 25' 43.10" S	63° 17' 19.68" E	0.96	60 M distance criterion
ECS 346	15° 26' 40.95" S	63° 17' 14.35" E	0.96	60 M distance criterion

Point	Latitude (deg°min´sec")	Longitude (deg°min´sec")	Distance (M)	Article 76 criterion
ECS 347	15° 27' 38.73" S	63° 17' 8.18" E	0.96	60 M distance criterion
ECS 348	15° 28' 36.37" S	63° 17' 0.81" E	0.96	60 M distance criterion
ECS 349	15° 29' 33.93" S	63° 16' 52.80" E	0.96	60 M distance criterion
ECS 350	15° 30' 31.30" S	63° 16' 43.50" E	0.96	60 M distance criterion
ECS 351	15° 31' 28.57" S	63° 16' 33.62" E	0.96	60 M distance criterion
ECS 352	15° 32' 25.61" S	63° 16' 22.42" E	0.96	60 M distance criterion
ECS 353	15° 33' 22.54" S	63° 16' 10.64" E	0.96	60 M distance criterion
ECS 354	15° 34' 19.19" S	63° 15' 57.55" E	0.96	60 M distance criterion
ECS 355	15° 35' 15.71" S	63° 15' 43.89" E	0.96	60 M distance criterion
ECS 356	15° 36' 11.98" S	63° 15' 29.21" E	0.96	60 M distance criterion
ECS 357	15° 37' 8.02" S	63° 15' 13.62" E	0.96	60 M distance criterion
ECS 358	15° 38' 3.68" S	63° 14' 56.62" E	0.96	60 M distance criterion
ECS 359	15° 38' 59.20" S	63° 14' 39.19" E	0.96	60 M distance criterion
ECS 360	15° 39' 54.36" S	63° 14' 20.61" E	0.96	60 M distance criterion
ECS 361	15° 40' 49.29" S	63° 14' 1.31" E	0.96	60 M distance criterion
ECS 362	15° 41' 43.92" S	63° 13' 41.15" E	0.96	60 M distance criterion
ECS 363	15° 42' 38.24" S	63° 13' 20.11" E	0.96	60 M distance criterion
ECS 364	15° 43' 32.04" S	63° 12' 57.69" E	0.96	60 M distance criterion
ECS 365	15° 44' 25.57" S	63° 12' 34.62" E	0.96	60 M distance criterion
ECS 366	15° 45' 18.84" S	63° 12' 10.93" E	0.96	60 M distance criterion
ECS 367	15° 46' 11.56" S	63° 11' 45.95" E	0.96	60 M distance criterion
ECS 368	15° 47' 4.12" S	63° 11' 20.67" E	0.96	60 M distance criterion
ECS 369	15° 47' 55.96" S	63° 10' 53.80" E	0.96	60 M distance criterion
ECS 370	15° 48' 47.78" S	63° 10' 26.93" E	0.96	60 M distance criterion
ECS 371	15° 49' 38.72" S	63° 9' 58.32" E	0.96	60 M distance criterion
ECS 372	15° 50' 29.63" S	63° 9' 29.65" E	0.96	60 M distance criterion
ECS 373	15° 51' 19.61" S	63° 8' 59.31" E	0.96	60 M distance criterion
ECS 374	15° 52' 9.43" S	63° 8' 28.68" E	0.96	60 M distance criterion
ECS 375	15° 52' 58.84" S	63° 7' 57.38" E	0.96	60 M distance criterion
ECS 376	15° 53' 47.88" S	63° 7' 25.04" E	0.97	60 M distance criterion / Baseline + 200M