

The Republic of PALAU

EXECUTIVE SUMMARY

**Submission to the
Commission on the Limits of the Continental Shelf**

**Pursuant to Article 76 of the
United Nations Convention on the Law of the Sea**

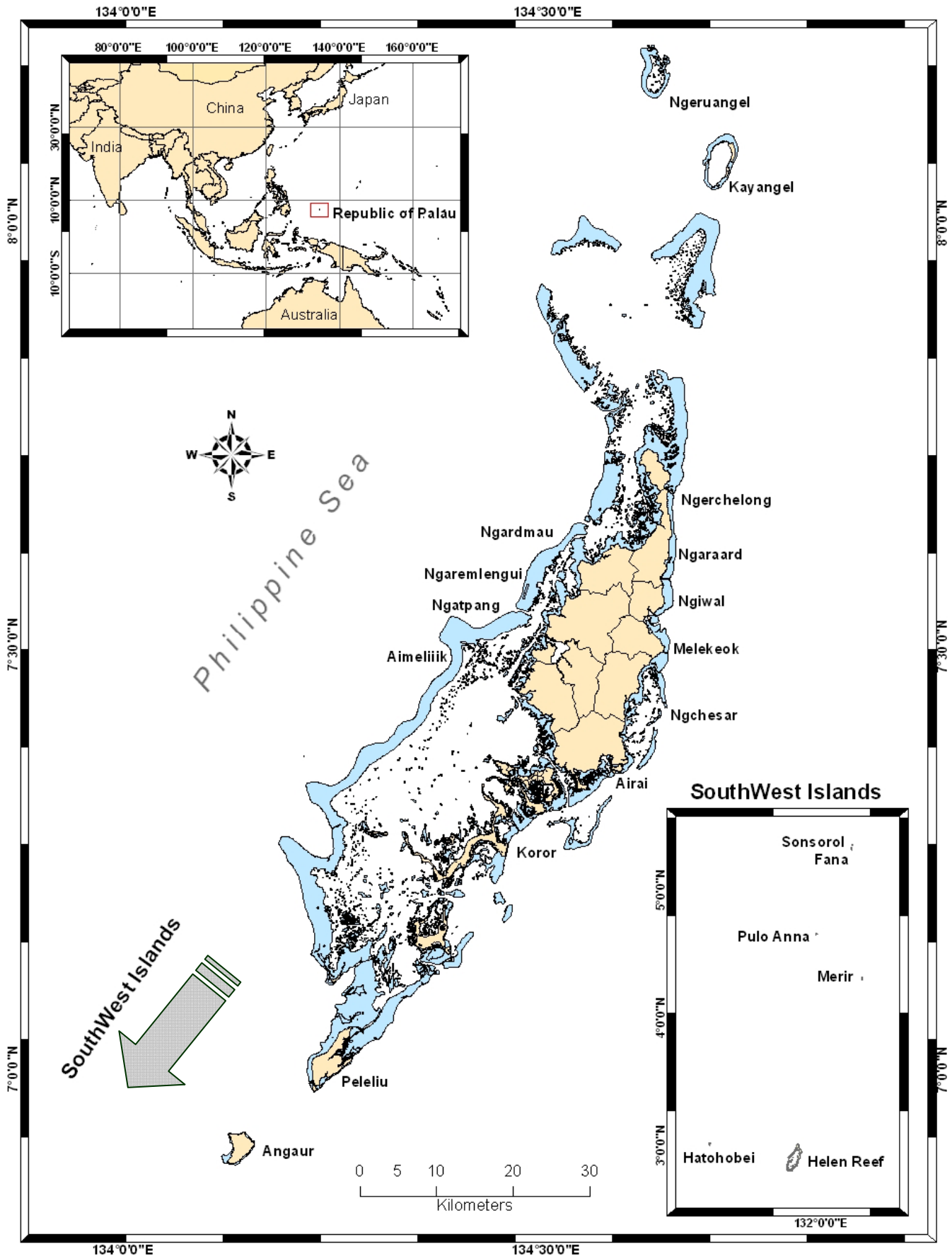


TABLE OF CONTENTS

1. Introduction	Page 3
2. Outer Limit of the Continental Shelf	Page 4
3. Maps and Coordinates	Page 7
4. Provisions of Article 76 Invoked	Page 7
5. Outstanding Maritime Delimitations	Page 8
6. Commission Members Who Assisted on the Submission	Page 9
7. Region by Region Descriptions of the Outer Limits of the Extended Continental Shelf	Page 9
7.1 The Southeast Area	Page 9
7.2 The West Area	Page 12
7.3 The North Area	Page 14
8. Note of Authentication	Page 16
9. Annex 1 -- Table of Coordinates	Page 17
10. Annex 2-- List of Figures and Maps	Page 34



1. INTRODUCTION

1.1 This submission to the Commission on the Limits of the Continental Shelf ('the Commission') is made by the Republic of Palau pursuant to paragraph 8 of Article 76 of the 1982 United Nations Convention on the Law of the Sea ('the Convention') in support of the establishment by Palau of the outer limits of the continental shelf that lie beyond 200 nautical miles (M) from the baselines from which the breadth of the territorial sea of Palau is measured (hereinafter referred to as 'the territorial sea baseline') in three regions:

- 1) The Southeast Area
- 2) The West Area
- 3) The North Area

1.2 The Republic of Palau is made up of a group of islands located in the Western Central Pacific, to the south of Japan, to the east of the Philippines, to the west of the Federated States of Micronesia and to the north of Indonesia. The Republic of Palau became an independent nation on 1 October 1994. Palau became a member of the United Nations on 15 December 1994, and ratified the Convention on 30 September 1996. Article 1, Section 1 of the Constitution of The Republic of Palau as amended states that the Republic of Palau "shall have jurisdiction and sovereignty over its territory which consists of all the islands... and the water areas extending to a two hundred (200) nautical miles exclusive economic zone..." Section 2 as amended extends this jurisdiction to the continental shelf in accordance with international law. Palau National Code, Title 27, Fishing, Section 141 defines the baselines and Section 144 establishes a 200 nautical mile exclusive fishing zone.

1.3 The area of continental shelf lying beyond 200M measured from the territorial sea baselines of Palau is referred to in this submission as the 'extended continental shelf'. Part of the submission by Palau concerns the area of extended continental shelf in respect of the bathymetric feature commonly known as the Palau-Kyushu Ridge which extends from south of Palau to many hundreds of kilometers to the north. The land mass of Palau sits atop the Palau-Kyushu Ridge. Palau's submission also includes claims to west, towards the Philippines, and to the southeast, towards Indonesia.

1.4 Under Article 4 of Annex II to the Convention, as supplemented by the decisions of the Eleventh and Eighteen Meetings of the States Parties to the Convention respectively regarding the ten-year period established by Article 4 of Annex II to the Convention (SPLOS/72) and (SPLOS/183), a coastal State for which the Convention entered into force before 13 May 1999 is required to submit particulars of the



outer limits of the continental shelf to the Commission, together with supporting scientific and technical data by 13 May 2009. This submission by Palau satisfies that requirement.

- 1.5** Palau has, for the purposes of preparing this submission, applied the relevant provisions of Article 76 of the Convention, the relevant provisions of the Rules of Procedure and the recommendations contained in the Scientific and Technical Guidelines of the Commission on the Limits of the Continental Shelf (CLCS/11) adopted by the Commission on 13 May 1999 (hereinafter referred to as ‘the Guidelines’).
- 1.6** In accordance with the specifications of the Commission set out in Annex III to the Rules of Procedure and paragraphs 9.1.3 to 9.1.6 of the Guidelines, the submission consists of three separate parts comprising an Executive Summary; a core analytical and descriptive part of the submission (‘the Main Body’); and, a part containing all required supporting scientific and technical data arranged in a series of annexes (‘supporting scientific and technical data’).

2. OUTER LIMIT OF THE CONTINENTAL SHELF OF PALAU

- 2.1** As provided for under paragraph 1 of Article 76 of the Convention, Palau has a continental shelf comprising the seabed and subsoil of the submarine areas that extend beyond its territorial sea throughout the natural prolongation of its land territory to the outer edge of the continental margin, up to the limits provided for in paragraphs 4 to 6 of Article 76, or to a distance of 200 M from the territorial sea baseline of Palau where the outer edge of the continental margin does not extend beyond that distance.
- 2.2** Paragraphs 4 to 6 of Article 76 of the Convention elaborate provisions by which a coastal State may establish the outer edge of its continental margin, and its extended continental shelf, wherever that margin extends beyond 200 M measured from the territorial sea baselines.
- 2.3** As set out in paragraph 7 of Article 76 of the Convention, a coastal State is to delineate the outer limits of the extended continental shelf by straight lines not exceeding 60 M in length, connecting fixed points (‘fixed points’) defined by coordinates of latitude and longitude.
- 2.4** The data submitted by Palau in support of this submission establishes that the outer edge of the continental margin appurtenant to the relevant land territory of Palau extends beyond 200 M

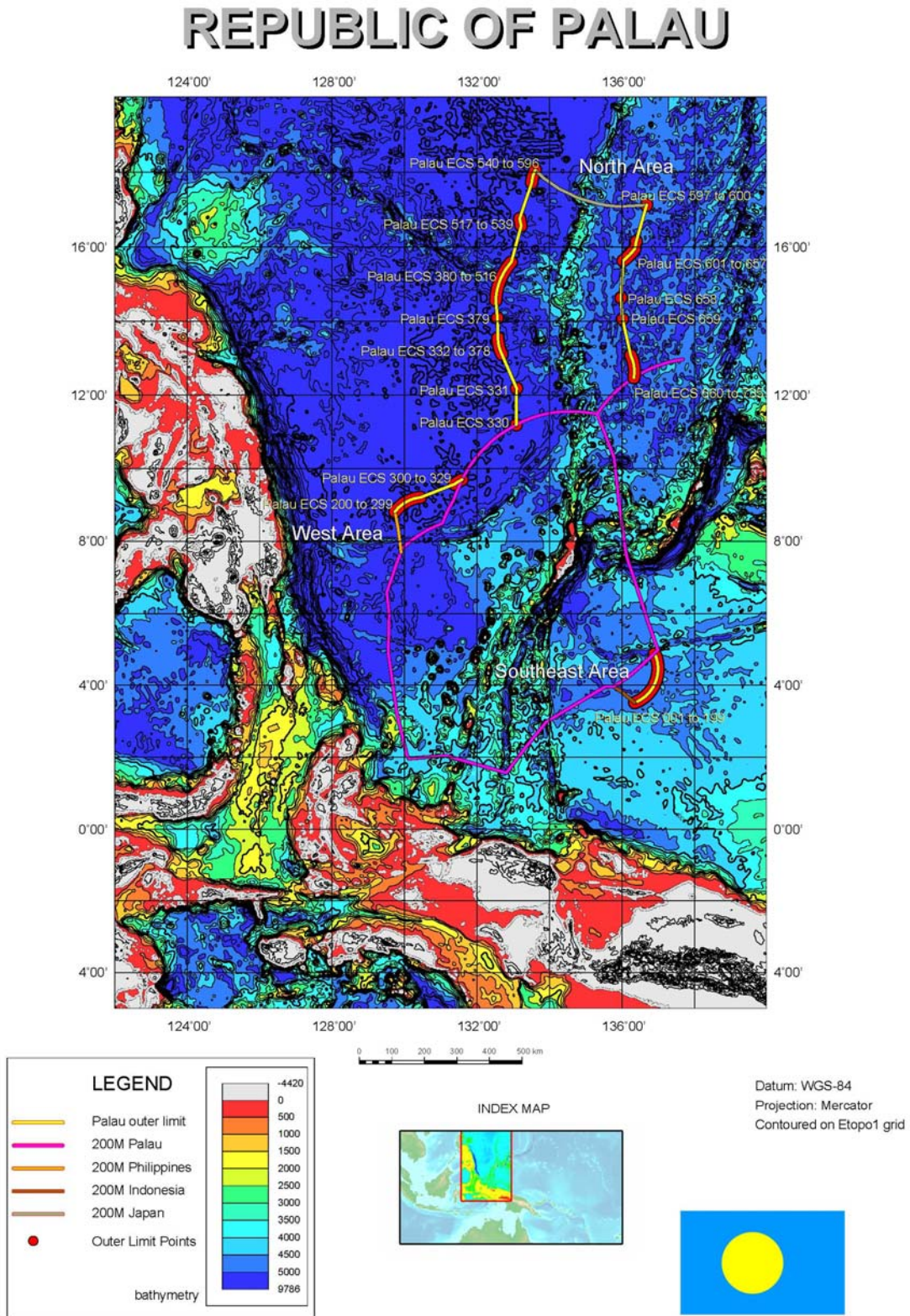


measured from the territorial sea baselines in the three regions as detailed in Section 6 of this Executive Summary which provides an outline of the three areas of extended continental shelf, including a depiction of their outer limits

- 2.5** Figure 1 (EX-FIG-01) provides an overview of the three areas of extended continental shelf with the location of the fixed points that define the outer limits of the relevant areas and the provisions of Article 76 invoked, which Palau is submitting to the Commission in this submission. The total area of these three areas is approximately 280 000 km².



Figure 1 (EX-FIG-01): Map depicting the outer limits of the Extended Continental Shelf of Palau. Also shown in **PALAU-MAP-01**.



3. MAPS AND COORDINATES

3.1 Four (4) maps at an appropriate scale are included in this Executive Summary in two forms, as Figures 1 to 4 within this document, and as separate larger maps (See: list of Maps and Figures).

- **Figure 1 (EX-FIG-01)** provides an overview of the three areas of extended continental shelf with the location of the fixed points that define the outer limits of the relevant area and the provisions of Article 76 invoked, which Palau is submitting to the Commission in this submission.;
- **Figure 2 (EX-FIG-02)** is an expanded view of Palau's Southeast Area claim;
- **Figure 3 (EX-FIG-03)** is an expanded view of Palau's West Area claim; and,
- **Figure 4 (EX-FIG-04)** is an expanded view of Palau's North Area claim.

3.2 A list of coordinates of the fixed points that define the outer limit of the extended continental shelf in this submission are supplied in Annex 1 (**EX-ANNEX 1**) of the Executive Summary, which lists the coordinates of the fixed points in decimal degrees. These fixed points define the outer limit of the three areas of extended continental shelf claimed by Palau;

- The Southeast Area
- The West Area
- The North Area.

The provision of Article 76 invoked to define each fixed point, as well as the distance between adjacent points, is also indicated in Annex 1.

4. PROVISIONS OF ARTICLE 76 INVOKED

For the purposes of this submission, Palau invokes paragraphs 4(b) and 7 of Article 76 of the Convention to support the submission delineating the outer limits of the continental shelf beyond 200 M from the territorial sea baselines. Paragraphs 4 (a) (ii) and 5 of Article 76 are also invoked in respect of fixed points as outlined in Section 6 of this Executive Summary.



5. OUTSTANDING MARITIME DELIMITATIONS

- 5.1 In accordance with Paragraph 2 of Annex 1 to the Rules of Procedure, Palau wishes to inform the Commission that the areas of extended continental shelf in this submission are affected by outstanding delimitations with opposite or adjacent coastal States as detailed in this section.
- 5.2 The extension of Palau's continental shelf in the Southeast Area is limited to the south by the 200 M area under the jurisdiction of Indonesia. In the area beyond 200 M a potential overlap exists between the continental shelf of Palau and the continental shelf of Indonesia. Accordingly, this submission is submitted without prejudice to the question of the delimitation of this area pursuant to paragraph 10, Article 76 and paragraph 4(a) of Annex I to the Rules of Procedure.
- 5.3 The extension of Palau's continental shelf in the West Area is limited to the east by the 200 M area under the jurisdiction of the Philippines. In the area beyond 200 M a potential overlap exists between the continental shelf of Palau and the continental shelf of the Philippines. Accordingly, this submission is submitted without prejudice to the question of the delimitation of this area pursuant to paragraph 10, Article 76 and paragraph 4(a) of Annex I to the Rules of Procedure.
- 5.4 The extension of Palau's continental shelf in the North Area is limited to the south by the 200 M area under the jurisdiction of the Federated States of Micronesia. The Treaty of delimitation between the Republic of Palau and the Federated States of Micronesia, promulgated in 2006, defines the equidistance line between the two countries out to 200 M. In the area beyond 200 M, a potential overlap exists between the continental shelf of Palau and the continental shelf of the Federated States of Micronesia (FSM). Accordingly, this submission is submitted without prejudice to the question of the delimitation of the area beyond 200 M in this area pursuant to paragraph 10, Article 76 and paragraph 4(a) of Annex I to the Rules of Procedure.
- 5.5 The extension of Palau's continental shelf in the North Area along the Palau-Kyushu Ridge, where potential overlap exists, is the subject of consultations between Palau and Japan. Palau's submission of, and the Commission's consideration of and recommendation on, this area is without prejudice to the question of the delimitation of the continental shelf beyond 200 M between Palau and Japan. The Government of Japan has indicated to the Government of the Republic of Palau that it has no objection to the Commission considering and making recommendations on this part of the submission, without prejudice to such delimitation.



6. COMMISSION MEMBERS WHO PROVIDED ADVICE DURING THE PREPARATION OF THIS SUBMISSION

The Republic of Palau was assisted in the preparation of its submission by Mr Philip Alexander Symonds, member of the Commission on the Limits of the Continental Shelf (2002-present).¹

7. REGION BY REGION DESCRIPTION OF THE OUTER LIMITS OF THE EXTENDED CONTINENTAL SHELF

7.1 The Southeast Area (EX-FIG-02)

7.1.1 This section describes the outer limits of the extended continental shelf in the Southeast Area.

7.1.2 The continental margin in this area is located in the North Pacific Ocean, southeast of the main islands of Palau and east of the Southwest Islands of Palau. It extends along a continuous submerged elevation extending from the land mass of Palau and abuts the 200 M jurisdictional zones of FSM and Indonesia.

7.1.3 The outer limits of the extended continental shelf in this area are defined by straight baselines not exceeding 60 M in length that connect 199 fixed points. This area is defined by Palau ECS Points 001 to 199. These points can be grouped into the following types:

- 197 are defined by arcs 60 M from the foot of the slope (Article 76, paragraph 4(a)(ii) of the Convention);
- 1 point (ECS 001) is on the 200 M EEZ of Palau

¹ Palau would like to recognize the training and support received from Geoscience Australia, University of Sydney, UNEP Shelf Programme, and SOPAC, together with the following individuals: Dr. Elaine Baker, UNEP Shelf Programme/University of Sydney; Mr. Yannick Beaudoin, UNEP Shelf Programme/GRID-Arendal; Dr Rosemay Rayfuse. University of New South Wales; Mr. Joshua Brien, Legal Adviser, Commonwealth Secretariat; Mr. Peter M. Hunter, UNCLOS Group; Mr. Scott Sweet and Mr. Harald Sund, Geocap; Mr. Mark Alcock and Mr. Phil Symonds, Geoscience Australia; Mr. Andrick Lal and Ms. Emily Artack from SOPAC. Palau would like to also acknowledge financial support for this project by the Government of Turkey and the United Nations Trust Fund.



- 1 point (ECS 199), where the outer limit of the extended continental shelf intersects the 200 M from the territorial sea baseline of Indonesia, which forms the relevant part of the outer limit of the extended continental shelf.

7.1.4 The list of coordinates of these fixed points in this area is provided in Annex 1 of the Executive Summary.

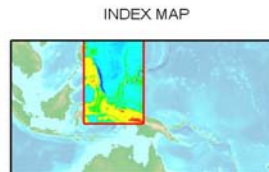
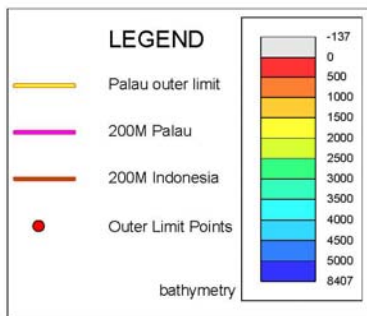
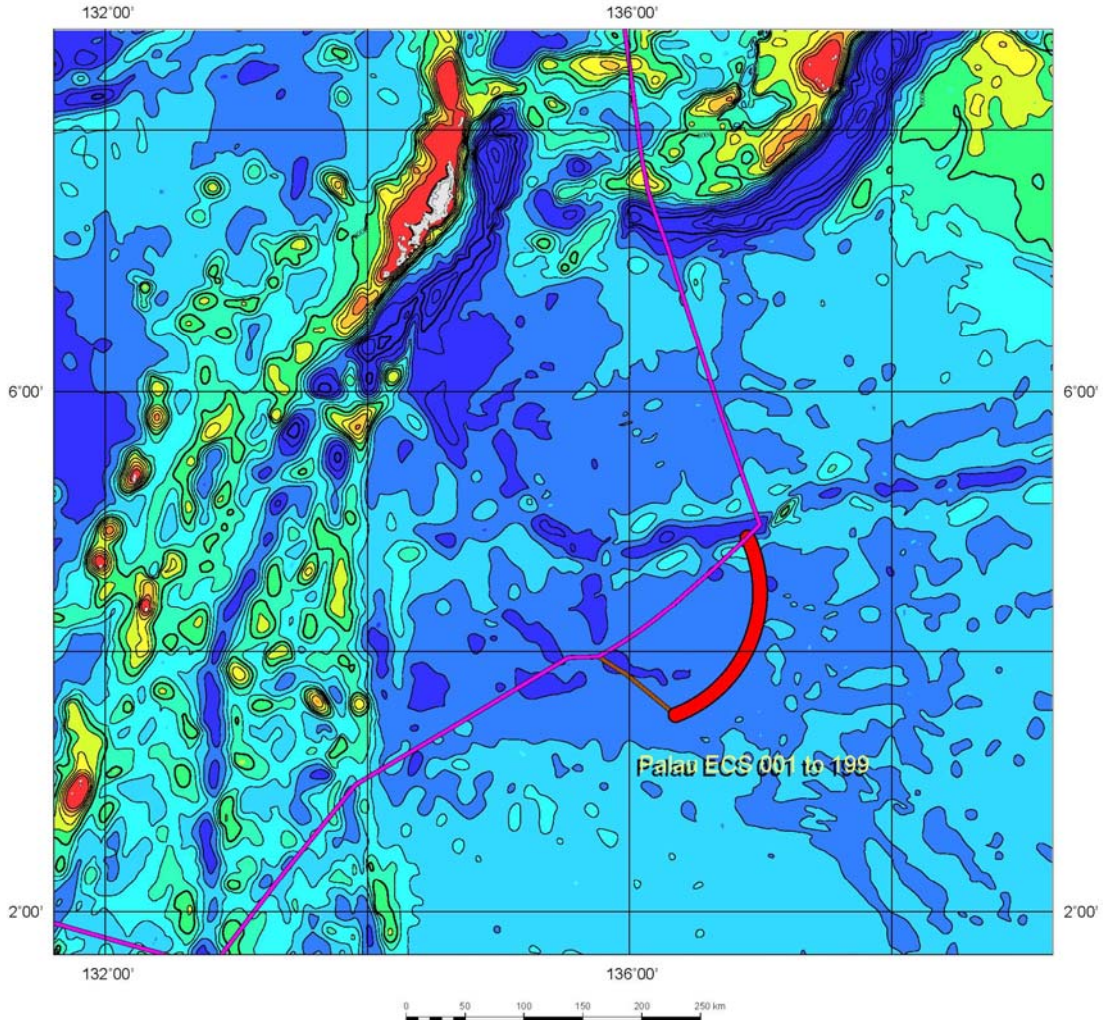
7.1.5 EX-FIG-2 shows the outer limits of the extended continental shelf and relevant information for this area.



Figure 2 (EX-FIG-02): Map depicting the outer limits of the Extended Continental Shelf of Palau in the Southeast Area. Also shown in **PALAU-MAP-02**.

REPUBLIC OF PALAU

Southeast Area of Interest



Datum: WGS-84
Projection: Mercator
Contoured on Etopo1 grid



7.2 The West Area (EX-FIG-03)

7.2.1 This section describes the outer limits of the extended continental shelf in the West Area.

7.2.2 The continental margin in this area is located in the Philippine Basin, west of the main islands of Palau. It extends along a continuous submerged elevation in a westerly direction from the land mass of Palau and abuts the 200 M jurisdictional zone of the Philippines.

7.2.3 The outer limits of the extended continental shelf in this area are defined by straight baselines not exceeding 60 M in length that connect 130 fixed points. This area is defined by Palau ECS Points 200 to 329. These points can be grouped into the following types:

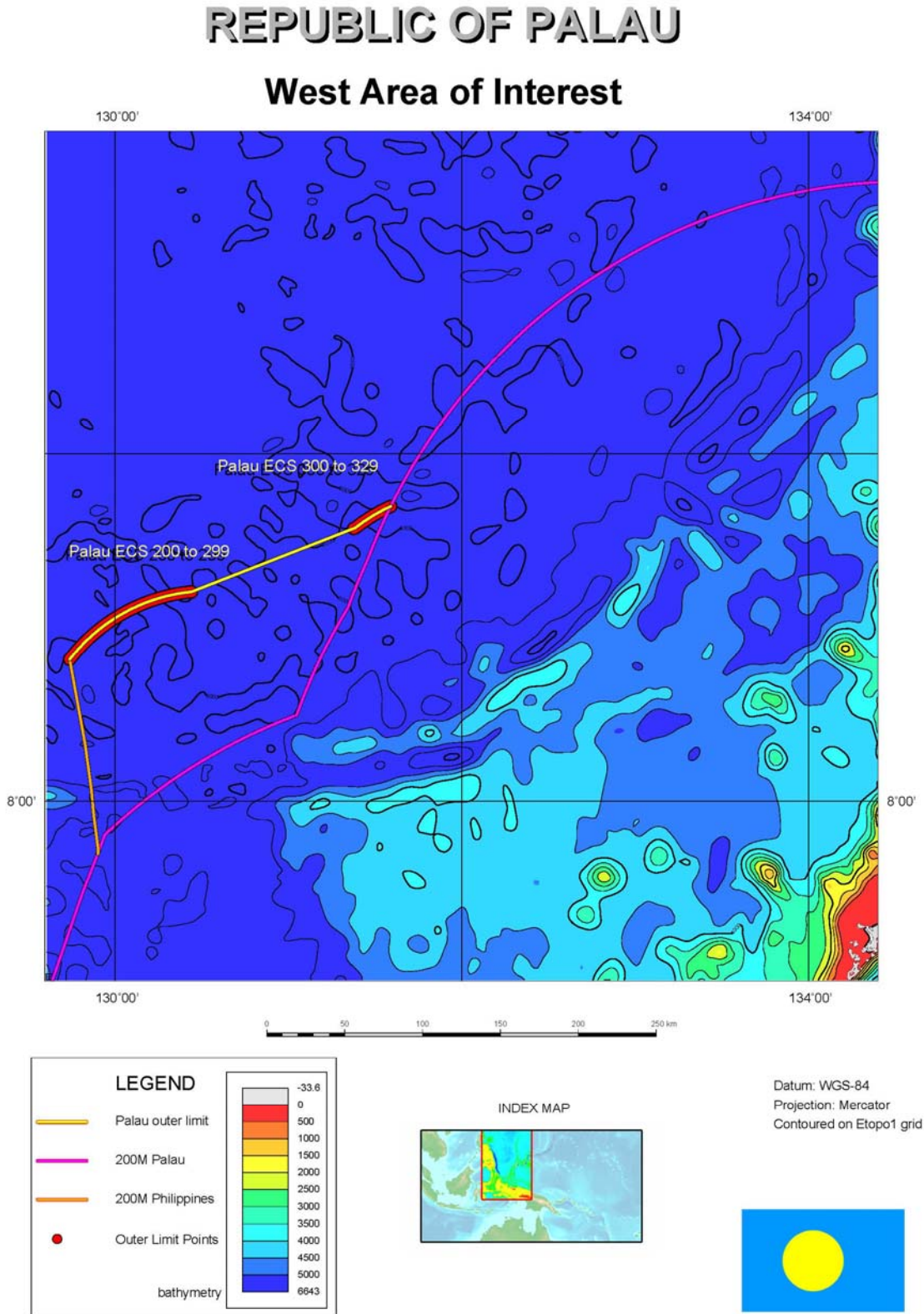
- 128 are defined by arcs 60 M from the foot of the slope (Article 76, paragraph 4(a)(ii) of the Convention);
- 1 point (ECS 200) is on the 200 M EEZ of Palau;
- 1 point (ECS 329), where the outer limit of the extended continental shelf intersects the line 200 M from the territorial sea baseline of the Philippines.

7.2.4 The list of coordinates of these fixed points in this area is provided in Annex 1 of the Executive Summary.

7.2.5 EX-FIG-03 shows the outer limits of the extended continental shelf and relevant information for this area.



Figure 3 (EX-FIG-03): Map depicting the outer limit of the Extended Continental Shelf of Palau in the West Area. Also shown in **PALAU-MAP-03**.



7.3 The North Area (EX-FIG-04)

7.3.1 This section describes the outer limits of the extended continental shelf in the North Area.

7.3.2 The continental margin in this area is located to the north of Palau's main islands, along the Palau-Kyushu Ridge which is a remnant island arc. This area is a natural prolongation of the land mass of Palau.

7.3.3 Palau is of the view that the natural geologic processes that contributed to the formation of the Palau-Kyushu Ridge, which includes all three areas claimed as extended continental shelf, comprise the submerged prolongation of the relevant land mass of Palau in this area.

7.3.3 The outer limits of the extended continental shelf in this area are defined by the 200 M jurisdictional zones of FSM and Japan and by straight baselines not exceeding 60 M in length that connect 406 fixed points. This area is defined by Palau ECS Points 330 to 735. These points can be grouped into the following types:

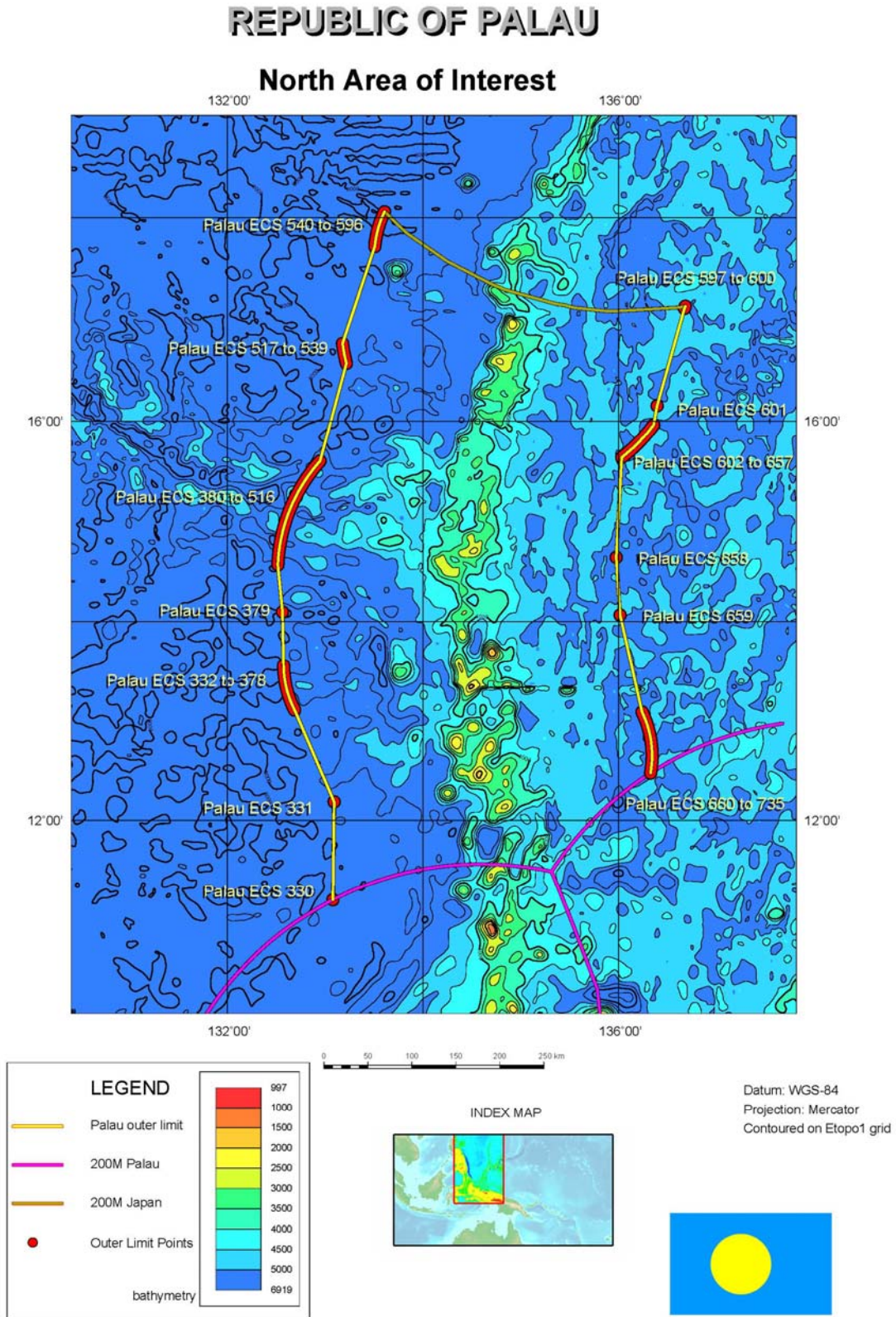
- 179 are defined by arcs 60 M from the foot of the slope (Article 76, paragraph 4(a)(ii) of the Convention);
- 222 are defined by the constraint line 100 M from the 2500 metre isobath (Article 76, paragraph 5 of the Convention);
- 1 point is defined by the constraint line 350 M from the baseline from which the territorial sea of Palau was determined;
- 1 point (330) is on the 200 M EEZ of Palau;
- 1 point (ECS 735), where the outer limit of the extended continental shelf intersects the line 200 M from the territorial sea baseline of The Federated States of Micronesia;
- 2 points (ECS 596 and 597), where the outer limit of the extended continental shelf intersects the line 200 M from the territorial sea baseline of Japan.

7.3.4 The list of coordinates of these fixed points in this area is provided in Annex 1 of the Executive Summary.

7.3.5 EX-FIG-04 shows the outer limits of the extended continental shelf and relevant information for this area.



Figure 4 (EX-FIG-04): Map depicting the outer limit of the Extended Continental Shelf of Palau in the North Area. Also shown in **PALAU-MAP-04**.



8. NOTE OF AUTHENTICATION

All maps, figures, charts and databases forming parts of this submission were prepared by the Palau Automated Land and Resource Information System (PALARIS) Office, Ministry of Resources and Development of the Republic of Palau. All coordinates used in this submission and on the charts are expressed in north latitude and east longitude units of the World Geodetic System 84 (WGS84). The Ministry of State and Ministry of Justice participated in the preparation of the document.



ANNEX 1

Table listing the fixed points defining the outer limit of the Extended Continental Shelf (Decimal Degrees)

ECS	E Longitude	N Latitude	Distance to next point	Article 76 Provision
Number	Decimal Degrees	Decimal Degrees	Nautical Miles	Invoked
The Southeast Area				
001	136.900925	4.881970	0.000	200 EEZ
002	136.903793	4.875812	0.406	60 M
003	136.907272	4.868196	0.500	60 M
004	136.910675	4.860551	0.500	60 M
005	136.914017	4.852876	0.500	60 M
006	136.917297	4.845177	0.500	60 M
007	136.920517	4.837447	0.500	60 M
008	136.923660	4.829692	0.500	60 M
009	136.926743	4.821912	0.500	60 M
010	136.929764	4.814104	0.500	60 M
011	136.932724	4.806273	0.500	60 M
012	136.935608	4.798417	0.500	60 M
013	136.938446	4.790536	0.500	60 M
014	136.941193	4.782634	0.500	60 M
015	136.943893	4.774707	0.500	60 M
016	136.946518	4.766757	0.500	60 M
017	136.949081	4.758788	0.500	60 M
018	136.951584	4.750796	0.500	60 M
019	136.954010	4.742784	0.500	60 M
020	136.956360	4.734753	0.500	60 M
021	136.958664	4.726701	0.500	60 M
022	136.960892	4.718632	0.500	60 M
023	136.963043	4.710543	0.500	60 M
024	136.965149	4.702437	0.500	60 M
025	136.967163	4.694312	0.500	60 M
026	136.969131	4.686172	0.500	60 M
027	136.971024	4.678016	0.500	60 M
028	136.972839	4.669845	0.500	60 M
029	136.974594	4.661657	0.500	60 M
030	136.976288	4.653456	0.500	60 M
031	136.977905	4.645241	0.500	60 M
032	136.979446	4.637013	0.500	60 M
033	136.980942	4.628772	0.500	60 M
034	136.982346	4.620519	0.500	60 M
035	136.983688	4.612254	0.500	60 M
036	136.984970	4.603979	0.500	60 M
037	136.986176	4.595693	0.500	60 M
038	136.987305	4.587398	0.500	60 M
039	136.988388	4.579092	0.500	60 M
040	136.989380	4.570778	0.500	60 M



ECS	E Longitude	N Latitude	Distance to next point	Article 76 Provision
Number	Decimal Degrees	Decimal Degrees	Nautical Miles	Invoked
041	136.990311	4.562457	0.500	60 M
042	136.991180	4.554127	0.500	60 M
043	136.991974	4.545791	0.500	60 M
044	136.992691	4.537448	0.500	60 M
045	136.993347	4.529100	0.500	60 M
046	136.993927	4.520747	0.500	60 M
047	136.994446	4.512389	0.500	60 M
048	136.994888	4.504027	0.500	60 M
049	136.995270	4.495662	0.500	60 M
050	136.995575	4.487293	0.500	60 M
051	136.995819	4.478923	0.500	60 M
052	136.995987	4.470550	0.500	60 M
053	136.996078	4.462176	0.500	60 M
054	136.996109	4.453803	0.500	60 M
055	136.996078	4.445429	0.500	60 M
056	136.995956	4.437055	0.500	60 M
057	136.995789	4.428683	0.500	60 M
058	136.995529	4.420313	0.500	60 M
059	136.995224	4.411944	0.500	60 M
060	136.994827	4.403580	0.500	60 M
061	136.994370	4.395218	0.500	60 M
062	136.993851	4.386861	0.500	60 M
063	136.993256	4.378508	0.500	60 M
064	136.992584	4.370161	0.500	60 M
065	136.991852	4.361819	0.500	60 M
066	136.991043	4.353483	0.500	60 M
067	136.990173	4.345156	0.500	60 M
068	136.989227	4.336835	0.500	60 M
069	136.988220	4.328523	0.500	60 M
070	136.987152	4.320219	0.500	60 M
071	136.985992	4.311925	0.500	60 M
072	136.984772	4.303640	0.500	60 M
073	136.983490	4.295366	0.500	60 M
074	136.982132	4.287103	0.500	60 M
075	136.980713	4.278852	0.500	60 M
076	136.979218	4.270614	0.500	60 M
077	136.977661	4.262386	0.500	60 M
078	136.976028	4.254174	0.500	60 M
079	136.974335	4.245974	0.500	60 M
080	136.972580	4.237790	0.500	60 M
081	136.970749	4.229620	0.500	60 M
082	136.968842	4.221466	0.500	60 M
083	136.966873	4.213327	0.500	60 M
084	136.964844	4.205206	0.500	60 M
085	136.962738	4.197102	0.500	60 M
086	136.960571	4.189015	0.500	60 M
087	136.958344	4.180948	0.500	60 M



ECS	E Longitude	N Latitude	Distance to next point	Article 76 Provision
Number	Decimal Degrees	Decimal Degrees	Nautical Miles	Invoked
088	136.956039	4.172899	0.500	60 M
089	136.953659	4.164870	0.500	60 M
090	136.951233	4.156861	0.500	60 M
091	136.948730	4.148873	0.500	60 M
092	136.946152	4.140905	0.500	60 M
093	136.943527	4.132960	0.500	60 M
094	136.940826	4.125037	0.500	60 M
095	136.938065	4.117136	0.500	60 M
096	136.935226	4.109261	0.500	60 M
097	136.932327	4.101407	0.500	60 M
098	136.929367	4.093578	0.500	60 M
099	136.926346	4.085775	0.500	60 M
100	136.923248	4.077997	0.500	60 M
101	136.920090	4.070246	0.500	60 M
102	136.916870	4.062521	0.500	60 M
103	136.913589	4.054823	0.500	60 M
104	136.910248	4.047153	0.500	60 M
105	136.906830	4.039511	0.500	60 M
106	136.903366	4.031898	0.500	60 M
107	136.899826	4.024313	0.500	60 M
108	136.896225	4.016759	0.500	60 M
109	136.892563	4.009236	0.500	60 M
110	136.888840	4.001743	0.500	60 M
111	136.885056	3.994283	0.500	60 M
112	136.881210	3.986854	0.500	60 M
113	136.877304	3.979458	0.500	60 M
114	136.873337	3.972094	0.500	60 M
115	136.869293	3.964764	0.500	60 M
116	136.865204	3.957467	0.500	60 M
117	136.861053	3.950204	0.500	60 M
118	136.856842	3.942977	0.500	60 M
119	136.852570	3.935785	0.500	60 M
120	136.848236	3.928630	0.500	60 M
121	136.843842	3.921509	0.500	60 M
122	136.839401	3.914428	0.500	60 M
123	136.834885	3.907383	0.500	60 M
124	136.830322	3.900376	0.500	60 M
125	136.825699	3.893408	0.500	60 M
126	136.821014	3.886478	0.500	60 M
127	136.816284	3.879588	0.500	60 M
128	136.811478	3.872738	0.500	60 M
129	136.806625	3.865928	0.500	60 M
130	136.801727	3.859158	0.500	60 M
131	136.796753	3.852431	0.500	60 M
132	136.791733	3.845744	0.500	60 M
133	136.786667	3.839099	0.500	60 M
134	136.781525	3.832498	0.500	60 M



ECS	E Longitude	N Latitude	Distance to next point	Article 76 Provision
Number	Decimal Degrees	Decimal Degrees	Nautical Miles	Invoked
135	136.776352	3.825940	0.500	60 M
136	136.771103	3.819425	0.500	60 M
137	136.765808	3.812954	0.500	60 M
138	136.760468	3.806527	0.500	60 M
139	136.755066	3.800146	0.500	60 M
140	136.749619	3.793812	0.500	60 M
141	136.744110	3.787524	0.500	60 M
142	136.738556	3.781281	0.500	60 M
143	136.732956	3.775085	0.500	60 M
144	136.727295	3.768934	0.500	60 M
145	136.721588	3.762833	0.500	60 M
146	136.715820	3.756780	0.500	60 M
147	136.710022	3.750774	0.500	60 M
148	136.704147	3.744817	0.500	60 M
149	136.698242	3.738909	0.500	60 M
150	136.692291	3.733050	0.500	60 M
151	136.686279	3.727243	0.500	60 M
152	136.680237	3.721486	0.500	60 M
153	136.674133	3.715778	0.500	60 M
154	136.667984	3.710123	0.500	60 M
155	136.661789	3.704519	0.500	60 M
156	136.655548	3.698966	0.500	60 M
157	136.649261	3.693467	0.500	60 M
158	136.642929	3.688019	0.500	60 M
159	136.636551	3.682625	0.500	60 M
160	136.630127	3.677286	0.500	60 M
161	136.623672	3.672000	0.500	60 M
162	136.617157	3.666767	0.500	60 M
163	136.610611	3.661590	0.500	60 M
164	136.604019	3.656467	0.500	60 M
165	136.597382	3.651400	0.500	60 M
166	136.590698	3.646388	0.500	60 M
167	136.583984	3.641433	0.500	60 M
168	136.577225	3.636533	0.500	60 M
169	136.570419	3.631692	0.500	60 M
170	136.563583	3.626906	0.500	60 M
171	136.556702	3.622178	0.500	60 M
172	136.549789	3.617508	0.500	60 M
173	136.542831	3.612895	0.500	60 M
174	136.535828	3.608342	0.500	60 M
175	136.528793	3.603847	0.500	60 M
176	136.521729	3.599410	0.500	60 M
177	136.514618	3.595034	0.500	60 M
178	136.507477	3.590716	0.500	60 M
179	136.500305	3.586459	0.500	60 M
180	136.493088	3.582262	0.500	60 M
181	136.485840	3.578126	0.500	60 M



ECS	E Longitude	N Latitude	Distance to next point	Article 76 Provision
Number	Decimal Degrees	Decimal Degrees	Nautical Miles	Invoked
224	129.871353	8.958818	0.500	60 M
225	129.877670	8.964351	0.500	60 M
226	129.884033	8.969833	0.500	60 M
227	129.890457	8.975261	0.500	60 M
228	129.896912	8.980636	0.500	60 M
229	129.903412	8.985955	0.500	60 M
230	129.909958	8.991222	0.500	60 M
231	129.916550	8.996434	0.500	60 M
232	129.923187	9.001592	0.500	60 M
233	129.929855	9.006693	0.500	60 M
234	129.936584	9.011739	0.500	60 M
235	129.943344	9.016728	0.500	60 M
236	129.950150	9.021661	0.500	60 M
237	129.956985	9.026539	0.500	60 M
238	129.963867	9.031359	0.500	60 M
239	129.970795	9.036122	0.500	60 M
240	129.977768	9.040827	0.500	60 M
241	129.984772	9.045473	0.500	60 M
242	129.991821	9.050062	0.500	60 M
243	129.998901	9.054591	0.500	60 M
244	130.006012	9.059062	0.500	60 M
245	130.013184	9.063474	0.500	60 M
246	130.020370	9.067827	0.500	60 M
247	130.027603	9.072120	0.500	60 M
248	130.034866	9.076351	0.500	60 M
249	130.042175	9.080523	0.500	60 M
250	130.049515	9.084634	0.500	60 M
251	130.056885	9.088685	0.500	60 M
252	130.064301	9.092673	0.500	60 M
253	130.071732	9.096600	0.500	60 M
254	130.079208	9.100466	0.500	60 M
255	130.086716	9.104269	0.500	60 M
256	130.094254	9.108009	0.500	60 M
257	130.101822	9.111688	0.500	60 M
258	130.109421	9.115303	0.500	60 M
259	130.117050	9.118855	0.500	60 M
260	130.124710	9.122343	0.500	60 M
261	130.132401	9.125767	0.500	60 M
262	130.140106	9.129128	0.500	60 M
263	130.147858	9.132424	0.500	60 M
264	130.155324	9.135656	0.500	60 M
265	130.163422	9.138824	0.500	60 M
266	130.171249	9.141927	0.500	60 M
267	130.179108	9.144964	0.500	60 M
268	130.186981	9.147937	0.500	60 M
269	130.194885	9.150843	0.500	60 M
270	130.202805	9.153683	0.500	60 M



ECS	E Longitude	N Latitude	Distance to next point	Article 76 Provision
Number	Decimal Degrees	Decimal Degrees	Nautical Miles	Invoked
271	130.210754	9.156458	0.500	60 M
272	130.218735	9.159167	0.500	60 M
273	130.226730	9.161810	0.500	60 M
274	130.234741	9.164386	0.500	60 M
275	130.242783	9.166896	0.500	60 M
276	130.250839	9.169338	0.500	60 M
277	130.258926	9.171714	0.500	60 M
278	130.267014	9.174022	0.500	60 M
279	130.275131	9.176263	0.500	60 M
280	130.283279	9.178436	0.500	60 M
281	130.291428	9.180542	0.500	60 M
282	130.299606	9.182580	0.500	60 M
283	130.307785	9.184550	0.500	60 M
284	130.315994	9.186453	0.500	60 M
285	130.324219	9.188286	0.500	60 M
286	130.332458	9.190051	0.500	60 M
287	130.340698	9.191749	0.500	60 M
288	130.348969	9.193377	0.500	60 M
289	130.357254	9.194938	0.500	60 M
290	130.365540	9.196429	0.500	60 M
291	130.373840	9.197851	0.500	60 M
292	130.382156	9.199204	0.500	60 M
293	130.390488	9.200489	0.500	60 M
294	130.398819	9.201704	0.500	60 M
295	130.407166	9.202849	0.500	60 M
296	130.415527	9.203926	0.500	60 M
297	130.423889	9.204932	0.500	60 M
298	130.432251	9.205870	0.500	60 M
299	130.440643	9.206738	0.500	60 M
300	131.378983	9.569281	59.620	60 M
301	131.385590	9.574481	0.572	60 M
302	131.392242	9.579625	0.500	60 M
303	131.398941	9.584715	0.500	60 M
304	131.405685	9.589750	0.500	60 M
305	131.412460	9.594728	0.500	60 M
306	131.419296	9.599648	0.500	60 M
307	131.426147	9.604511	0.500	60 M
308	131.433060	9.609319	0.500	60 M
309	131.440002	9.614069	0.500	60 M
310	131.446991	9.618762	0.500	60 M
311	131.454025	9.623397	0.500	60 M
312	131.461090	9.627972	0.500	60 M
313	131.468185	9.632489	0.500	60 M
314	131.475327	9.636947	0.500	60 M
315	131.482513	9.641345	0.500	60 M
316	131.489716	9.645685	0.500	60 M
317	131.496979	9.649963	0.500	60 M



ECS	E Longitude	N Latitude	Distance to next point	Article 76 Provision
Number	Decimal Degrees	Decimal Degrees	Nautical Miles	Invoked
318	131.504257	9.654183	0.500	60 M
319	131.511581	9.658340	0.500	60 M
320	131.518936	9.662437	0.500	60 M
321	131.526337	9.666474	0.500	60 M
322	131.533768	9.670448	0.500	60 M
323	131.541229	9.674363	0.500	60 M
324	131.548706	9.678213	0.500	60 M
325	131.556229	9.682001	0.500	60 M
326	131.563797	9.685728	0.500	60 M
327	131.571381	9.689390	0.500	60 M
328	131.578995	9.692991	0.500	60 M
329	131.590088	9.698086	0.724	200 M line of another country
The west side of the North Area				
330	133.081268	11.198124	0.000	200 EEZ
331	133.093307	12.188276	59.146	60 M
332	132.689575	13.109025	59.881	60 M
333	132.68573	13.116493	0.500	60 M
334	132.681931	13.123993	0.500	60 M
335	132.678207	13.131523	0.500	60 M
336	132.674530	13.139085	0.500	60 M
337	132.670944	13.146675	0.500	60 M
338	132.667404	13.154294	0.500	60 M
339	132.663925	13.161942	0.500	60 M
340	132.660522	13.169620	0.500	60 M
341	132.657181	13.177322	0.500	60 M
342	132.653900	13.185053	0.500	60 M
343	132.650696	13.192810	0.500	60 M
344	132.647552	13.200592	0.500	60 M
345	132.644470	13.208400	0.500	60 M
346	132.641464	13.216230	0.500	60 M
347	132.638519	13.224088	0.500	60 M
348	132.635635	13.231969	0.500	60 M
349	132.632828	13.239874	0.500	60 M
350	132.630081	13.247801	0.500	60 M
351	132.627411	13.255749	0.500	60 M
352	132.624802	13.263719	0.500	60 M
353	132.622253	13.271709	0.500	60 M
354	132.619781	13.279721	0.500	60 M
355	132.617371	13.287752	0.500	60 M
356	132.615036	13.295804	0.500	60 M
357	132.612762	13.303874	0.500	60 M
358	132.610565	13.311962	0.500	60 M
359	132.608429	13.320066	0.500	60 M
360	132.606369	13.328190	0.500	60 M



ECS	E Longitude	N Latitude	Distance to next point	Article 76 Provision
Number	Decimal Degrees	Decimal Degrees	Nautical Miles	Invoked
361	132.604385	13.336329	0.500	60 M
362	132.602448	13.344484	0.500	60 M
363	132.600601	13.352655	0.500	60 M
364	132.598816	13.360841	0.500	60 M
365	132.597092	13.369040	0.500	60 M
366	132.595444	13.377254	0.500	60 M
367	132.593872	13.385480	0.500	60 M
368	132.592361	13.393720	0.500	60 M
369	132.590927	13.401971	0.500	60 M
370	132.589554	13.410233	0.500	60 M
371	132.588272	13.418506	0.500	60 M
372	132.587036	13.426789	0.500	60 M
373	132.585876	13.435082	0.500	60 M
374	132.584793	13.443385	0.500	60 M
375	132.583786	13.451695	0.500	60 M
376	132.582840	13.460014	0.500	60 M
377	132.581970	13.468342	0.500	60 M
378	132.581161	13.476675	0.500	60 M
379	132.580429	13.485015	0.500	60 M
380	132.579773	13.493360	0.500	60 M
381	132.579178	13.501710	0.500	60 M
382	132.578674	13.510065	0.500	60 M
383	132.578217	13.518423	0.500	60 M
384	132.577850	13.526785	0.500	60 M
385	132.577545	13.535150	0.500	60 M
386	132.577301	13.543516	0.500	60 M
387	132.577148	13.551884	0.500	60 M
388	132.577103	13.555326	0.206	350 Line
389	132.565384	14.096314	32.325	2,500 + 100 M
390	132.518051	14.567441	28.281	2,500 + 100 M
391	132.518448	14.575801	0.500	2,500 + 100 M
392	132.518890	14.584160	0.500	2,500 + 100 M
393	132.519379	14.592515	0.500	2,500 + 100 M
394	132.519897	14.600868	0.500	2,500 + 100 M
395	132.520477	14.60922	0.500	2,500 + 100 M
396	132.521088	14.617568	0.500	2,500 + 100 M
397	132.521744	14.625912	0.500	2,500 + 100 M
398	132.522446	14.634254	0.500	2,500 + 100 M
399	132.523193	14.642591	0.500	2,500 + 100 M
400	132.523972	14.650925	0.500	2,500 + 100 M
401	132.524811	14.659255	0.500	2,500 + 100 M
402	132.525681	14.667581	0.500	2,500 + 100 M
403	132.526596	14.675902	0.500	2,500 + 100 M
404	132.527557	14.684220	0.500	2,500 + 100 M
405	132.528549	14.692532	0.500	2,500 + 100 M
406	132.529602	14.700840	0.500	2,500 + 100 M
407	132.530685	14.709142	0.500	2,500 + 100 M



ECS	E Longitude	N Latitude	Distance to next point	Article 76 Provision
Number	Decimal Degrees	Decimal Degrees	Nautical Miles	Invoked
408	132.531815	14.717439	0.500	2,500 + 100 M
409	132.532974	14.725730	0.500	2,500 + 100 M
410	132.534195	14.734015	0.500	2,500 + 100 M
411	132.535446	14.742294	0.500	2,500 + 100 M
412	132.536743	14.750567	0.500	2,500 + 100 M
413	132.538086	14.758833	0.500	2,500 + 100 M
414	132.539474	14.767094	0.500	2,500 + 100 M
415	132.540909	14.775348	0.500	2,500 + 100 M
416	132.542374	14.783593	0.500	2,500 + 100 M
417	132.543884	14.791832	0.500	2,500 + 100 M
418	132.545441	14.800063	0.500	2,500 + 100 M
419	132.547028	14.808286	0.500	2,500 + 100 M
420	132.548676	14.816502	0.500	2,500 + 100 M
421	132.550354	14.824710	0.500	2,500 + 100 M
422	132.552078	14.832909	0.500	2,500 + 100 M
423	132.553833	14.841102	0.500	2,500 + 100 M
424	132.555649	14.849283	0.500	2,500 + 100 M
425	132.557495	14.857456	0.500	2,500 + 100 M
426	132.559387	14.865621	0.500	2,500 + 100 M
427	132.561325	14.873775	0.500	2,500 + 100 M
428	132.563309	14.881921	0.500	2,500 + 100 M
429	132.565323	14.890058	0.500	2,500 + 100 M
430	132.567383	14.898183	0.500	2,500 + 100 M
431	132.569473	14.906299	0.500	2,500 + 100 M
432	132.571625	14.914403	0.500	2,500 + 100 M
433	132.573807	14.922498	0.500	2,500 + 100 M
434	132.576035	14.930582	0.500	2,500 + 100 M
435	132.578308	14.938655	0.500	2,500 + 100 M
436	132.580612	14.946716	0.500	2,500 + 100 M
437	132.582962	14.954766	0.500	2,500 + 100 M
438	132.585358	14.962806	0.500	2,500 + 100 M
439	132.587799	14.970832	0.500	2,500 + 100 M
440	132.590271	14.978848	0.500	2,500 + 100 M
441	132.592789	14.986851	0.500	2,500 + 100 M
442	132.595352	14.994841	0.500	2,500 + 100 M
443	132.597961	15.002819	0.500	2,500 + 100 M
444	132.600601	15.010784	0.500	2,500 + 100 M
445	132.603271	15.018737	0.500	2,500 + 100 M
446	132.606003	15.026675	0.500	2,500 + 100 M
447	132.608765	15.034601	0.500	2,500 + 100 M
448	132.611572	15.042512	0.500	2,500 + 100 M
449	132.614410	15.050410	0.500	2,500 + 100 M
450	132.617310	15.058295	0.500	2,500 + 100 M
451	132.620239	15.066165	0.500	2,500 + 100 M
452	132.623199	15.074021	0.500	2,500 + 100 M
453	132.626205	15.081863	0.500	2,500 + 100 M
454	132.629272	15.089690	0.500	2,500 + 100 M



ECS	E Longitude	N Latitude	Distance to next point	Article 76 Provision
Number	Decimal Degrees	Decimal Degrees	Nautical Miles	Invoked
455	132.632355	15.097502	0.500	2,500 + 100 M
456	132.635483	15.105298	0.500	2,500 + 100 M
457	132.638657	15.116079	0.500	2,500 + 100 M
458	132.641876	15.120845	0.500	2,500 + 100 M
459	132.645126	15.128593	0.500	2,500 + 100 M
460	132.648407	15.136329	0.500	2,500 + 100 M
461	132.651749	15.144045	0.500	2,500 + 100 M
462	132.655121	15.151748	0.500	2,500 + 100 M
463	132.658524	15.159432	0.500	2,500 + 100 M
464	132.661972	15.167100	0.500	2,500 + 100 M
465	132.665466	15.174752	0.500	2,500 + 100 M
466	132.668991	15.182286	0.500	2,500 + 100 M
467	132.672562	15.190003	0.500	2,500 + 100 M
468	132.676178	15.197604	0.500	2,500 + 100 M
469	132.679825	15.205184	0.500	2,500 + 100 M
470	132.683517	15.212749	0.500	2,500 + 100 M
471	132.687241	15.220296	0.500	2,500 + 100 M
472	132.691010	15.227824	0.500	2,500 + 100 M
473	132.694809	15.235332	0.500	2,500 + 100 M
474	132.698654	15.242825	0.500	2,500 + 100 M
475	132.702545	15.250296	0.500	2,500 + 100 M
476	132.706467	15.257749	0.500	2,500 + 100 M
477	132.710419	15.265181	0.500	2,500 + 100 M
478	132.714417	15.272595	0.500	2,500 + 100 M
479	132.718460	15.279990	0.500	2,500 + 100 M
480	132.722534	15.287366	0.500	2,500 + 100 M
481	132.726654	15.29472	0.500	2,500 + 100 M
482	132.730804	15.302054	0.500	2,500 + 100 M
483	132.735001	15.309370	0.500	2,500 + 100 M
484	132.739227	15.316665	0.500	2,500 + 100 M
485	132.743484	15.323937	0.500	2,500 + 100 M
486	132.747787	15.331189	0.500	2,500 + 100 M
487	132.752121	15.338422	0.500	2,500 + 100 M
488	132.756500	15.345631	0.500	2,500 + 100 M
489	132.760925	15.352820	0.500	2,500 + 100 M
490	132.765381	15.359988	0.500	2,500 + 100 M
491	132.769867	15.367134	0.500	2,500 + 100 M
492	132.774399	15.374258	0.500	2,500 + 100 M
493	132.778961	15.381359	0.500	2,500 + 100 M
494	132.783554	15.388438	0.500	2,500 + 100 M
495	132.788193	15.395495	0.500	2,500 + 100 M
496	132.792877	15.402529	0.500	2,500 + 100 M
497	132.797577	15.409538	0.500	2,500 + 100 M
498	132.802338	15.416526	0.500	2,500 + 100 M
499	132.807114	15.423490	0.500	2,500 + 100 M
500	132.811935	15.43043	0.500	2,500 + 100 M
501	132.816788	15.437346	0.500	2,500 + 100 M



ECS	E Longitude	N Latitude	Distance to next point	Article 76 Provision
Number	Decimal Degrees	Decimal Degrees	Nautical Miles	Invoked
502	132.821686	15.444241	0.500	2,500 + 100 M
503	132.826614	15.451111	0.500	2,500 + 100 M
504	132.831573	15.457957	0.500	2,500 + 100 M
505	132.836563	15.464779	0.500	2,500 + 100 M
506	132.841599	15.471576	0.500	2,500 + 100 M
507	132.846664	15.478349	0.500	2,500 + 100 M
508	132.851776	15.485095	0.500	2,500 + 100 M
509	132.856918	15.491818	0.500	2,500 + 100 M
510	132.862091	15.498516	0.500	2,500 + 100 M
511	132.867294	15.505187	0.500	2,500 + 100 M
512	132.872543	15.511834	0.500	2,500 + 100 M
513	132.877823	15.518456	0.500	2,500 + 100 M
514	132.883133	15.525051	0.500	2,500 + 100 M
515	132.888474	15.531620	0.500	2,500 + 100 M
516	132.893860	15.538163	0.500	2,500 + 100 M
517	132.899277	15.544681	0.500	2,500 + 100 M
518	132.904724	15.551170	0.500	2,500 + 100 M
519	132.910202	15.557635	0.500	2,500 + 100 M
520	132.915726	15.564072	0.500	2,500 + 100 M
521	132.921280	15.570482	0.500	2,500 + 100 M
522	132.926865	15.576866	0.500	2,500 + 100 M
523	132.932480	15.583221	0.500	2,500 + 100 M
524	132.938126	15.589549	0.500	2,500 + 100 M
525	132.943802	15.595849	0.500	2,500 + 100 M
526	132.949524	15.602121	0.500	2,500 + 100 M
527	133.218735	16.570702	59.927	2,500 + 100 M
528	133.216614	16.578814	0.500	2,500 + 100 M
529	133.214523	16.586933	0.500	2,500 + 100 M
530	133.212463	16.595064	0.500	2,500 + 100 M
531	133.210464	16.603207	0.500	2,500 + 100 M
532	133.208496	16.611355	0.500	2,500 + 100 M
533	133.206573	16.619516	0.500	2,500 + 100 M
534	133.204697	16.627686	0.500	2,500 + 100 M
535	133.202866	16.635862	0.500	2,500 + 100 M
536	133.201065	16.644049	0.500	2,500 + 100 M
537	133.199310	16.652245	0.500	2,500 + 100 M
538	133.197601	16.660448	0.500	2,500 + 100 M
539	133.195938	16.668659	0.500	2,500 + 100 M
540	133.194305	16.676878	0.500	2,500 + 100 M
541	133.192719	16.685106	0.500	2,500 + 100 M
542	133.191177	16.693340	0.500	2,500 + 100 M
543	133.189682	16.701582	0.500	2,500 + 100 M
544	133.188232	16.709831	0.500	2,500 + 100 M
545	133.186813	16.718088	0.500	2,500 + 100 M
546	133.185455	16.726351	0.500	2,500 + 100 M
547	133.184113	16.734619	0.500	2,500 + 100 M
548	133.182831	16.742895	0.500	2,500 + 100 M



ECS	E Longitude	N Latitude	Distance to next point	Article 76 Provision
Number	Decimal Degrees	Decimal Degrees	Nautical Miles	Invoked
549	133.181595	16.751175	0.500	2,500 + 100 M
550	133.180389	16.759462	0.500	2,500 + 100 M
551	133.179245	16.767756	0.500	2,500 + 100 M
552	133.508911	17.719463	59.940	2,500 + 100 M
553	133.509155	17.722725	0.195	60 M
554	133.510040	17.731049	0.500	60 M
555	133.511002	17.739363	0.500	60 M
556	133.512024	17.747671	0.500	60 M
557	133.513138	17.755970	0.500	60 M
558	133.514313	17.764259	0.500	60 M
559	133.515564	17.772541	0.500	60 M
560	133.516891	17.780811	0.500	60 M
561	133.518280	17.789070	0.500	60 M
562	133.519745	17.797318	0.500	60 M
563	133.521286	17.805553	0.500	60 M
564	133.522888	17.813778	0.500	60 M
565	133.524567	17.821989	0.500	60 M
566	133.526321	17.830185	0.500	60 M
567	133.528152	17.838367	0.500	60 M
568	133.530045	17.846533	0.500	60 M
569	133.532013	17.854685	0.500	60 M
570	133.534042	17.862822	0.500	60 M
571	133.536148	17.870941	0.500	60 M
572	133.538330	17.879044	0.500	60 M
573	133.540573	17.887129	0.500	60 M
574	133.542908	17.895195	0.500	60 M
575	133.545288	17.903242	0.500	60 M
576	133.547760	17.911270	0.500	60 M
577	133.550278	17.919279	0.500	60 M
578	133.552887	17.927265	0.500	60 M
579	133.555557	17.935232	0.500	60 M
580	133.558289	17.943176	0.500	60 M
581	133.561096	17.951099	0.500	60 M
582	133.563980	17.959000	0.500	60 M
583	133.566925	17.966877	0.500	60 M
584	133.569946	17.974730	0.500	60 M
585	133.573029	17.982559	0.500	60 M
586	133.576187	17.990362	0.500	60 M
587	133.579407	17.998140	0.500	60 M
588	133.582687	18.005894	0.500	60 M
589	133.586044	18.013618	0.500	60 M
590	133.589462	18.021317	0.500	60 M
591	133.592957	18.028986	0.500	60 M
592	133.596512	18.036629	0.500	60 M
593	133.600143	18.044241	0.500	60 M
594	133.603836	18.051826	0.500	60 M
595	133.607590	18.059380	0.500	60 M



ECS	E Longitude	N Latitude	Distance to next point	Article 76 Provision
Number	Decimal Degrees	Decimal Degrees	Nautical Miles	Invoked
596	133.608948	18.062077	0.179	200 M line of another country
The west side of the North Area				
The east side of the North Area				
597	136.683609	17.134340	0.000	200 M line of another country
598	136.681152	17.127947	0.407	60 M
599	136.678070	17.120125	0.500	60 M
600	136.674835	17.112108	0.514	60 M
601	136.395401	16.153177	59.518	60 M
602	136.360291	15.963664	11.504	2,500 + 100 M
603	136.357925	15.960555	0.231	2,500 + 100 M
604	136.352768	15.953835	0.500	2,500 + 100 M
605	136.347580	15.947142	0.500	2,500 + 100 M
606	136.342346	15.940473	0.500	2,500 + 100 M
607	136.337097	15.933829	0.500	2,500 + 100 M
608	136.331802	15.927211	0.500	2,500 + 100 M
609	136.326477	15.920618	0.500	2,500 + 100 M
610	136.321121	15.914051	0.500	2,500 + 100 M
611	136.315720	15.907510	0.500	2,500 + 100 M
612	136.310303	15.900997	0.500	2,500 + 100 M
613	136.304840	15.894507	0.500	2,500 + 100 M
614	136.299347	15.888044	0.500	2,500 + 100 M
615	136.293823	15.881608	0.500	2,500 + 100 M
616	136.288254	15.875197	0.500	2,500 + 100 M
617	136.282669	15.868814	0.500	2,500 + 100 M
618	136.277039	15.862459	0.500	2,500 + 100 M
619	136.271393	15.856130	0.500	2,500 + 100 M
620	136.265701	15.849828	0.500	2,500 + 100 M
621	136.259979	15.843555	0.500	2,500 + 100 M
622	136.254227	15.837308	0.500	2,500 + 100 M
623	136.248428	15.831089	0.500	2,500 + 100 M
624	136.242615	15.824898	0.500	2,500 + 100 M
625	136.236771	15.818736	0.500	2,500 + 100 M
626	136.230896	15.812600	0.500	2,500 + 100 M
627	136.224976	15.806496	0.500	2,500 + 100 M
628	136.219040	15.800420	0.500	2,500 + 100 M
629	136.213074	15.794372	0.500	2,500 + 100 M
630	136.207062	15.788351	0.500	2,500 + 100 M
631	136.201035	15.782360	0.500	2,500 + 100 M
632	136.194962	15.776400	0.500	2,500 + 100 M
633	136.188873	15.770467	0.500	2,500 + 100 M
634	136.182739	15.764563	0.500	2,500 + 100 M
635	136.176590	15.758690	0.500	2,500 + 100 M
636	136.170395	15.752845	0.500	2,500 + 100 M
637	136.164185	15.747030	0.500	2,500 + 100 M



ECS	E Longitude	N Latitude	Distance to next point	Article 76 Provision
Number	Decimal Degrees	Decimal Degrees	Nautical Miles	Invoked
638	136.157944	15.741246	0.500	2,500 + 100 M
639	136.151672	15.735493	0.500	2,500 + 100 M
640	136.145370	15.729770	0.500	2,500 + 100 M
641	136.139038	15.724076	0.500	2,500 + 100 M
642	136.132675	15.718415	0.500	2,500 + 100 M
643	136.126282	15.712783	0.500	2,500 + 100 M
644	136.119858	15.707182	0.500	2,500 + 100 M
645	136.113419	15.701611	0.500	2,500 + 100 M
646	136.106934	15.696073	0.500	2,500 + 100 M
647	136.100433	15.690564	0.500	2,500 + 100 M
648	136.093903	15.685088	0.500	2,500 + 100 M
649	136.087341	15.679642	0.500	2,500 + 100 M
650	136.080765	15.674228	0.500	2,500 + 100 M
651	136.074142	15.668847	0.500	2,500 + 100 M
652	136.067505	15.663498	0.500	2,500 + 100 M
653	136.060837	15.658179	0.500	2,500 + 100 M
654	136.054138	15.652894	0.500	2,500 + 100 M
655	136.047409	15.647642	0.500	2,500 + 100 M
656	136.040665	15.642420	0.500	2,500 + 100 M
657	136.033890	15.637232	0.500	2,500 + 100 M
658	135.977539	14.641692	59.569	2,500 + 100 M
659	136.017014	14.065040	34.527	2,500 + 100 M
660	136.241013	13.089912	59.705	60 M
661	136.244705	13.082369	0.500	60 M
662	136.248352	13.074796	0.500	60 M
663	136.251923	13.067194	0.500	60 M
664	136.255417	13.059562	0.500	60 M
665	136.258865	13.051901	0.500	60 M
666	136.262238	13.044213	0.500	60 M
667	136.265549	13.036498	0.500	60 M
668	136.268784	13.028756	0.500	60 M
669	136.271957	13.020986	0.500	60 M
670	136.275070	13.013191	0.500	60 M
671	136.278122	13.005373	0.500	60 M
672	136.281097	12.997529	0.500	60 M
673	136.284012	12.989661	0.500	60 M
674	136.286850	12.981769	0.500	60 M
675	136.289627	12.973854	0.500	60 M
676	136.292328	12.965918	0.500	60 M
677	136.294983	12.957958	0.500	60 M
678	136.297546	12.949978	0.500	60 M
679	136.300049	12.941975	0.500	60 M
680	136.302490	12.933953	0.500	60 M
681	136.304855	12.925912	0.500	60 M
682	136.307159	12.917850	0.500	60 M
683	136.309387	12.909772	0.500	60 M
684	136.311554	12.901674	0.500	60 M



ECS	E Longitude	N Latitude	Distance to next point	Article 76 Provision
Number	Decimal Degrees	Decimal Degrees	Nautical Miles	Invoked
685	136.313644	12.893560	0.500	60 M
686	136.315674	12.885428	0.500	60 M
687	136.317627	12.877281	0.500	60 M
688	136.319504	12.869118	0.500	60 M
689	136.321335	12.860940	0.500	60 M
690	136.323074	12.852746	0.500	60 M
691	136.324753	12.844539	0.500	60 M
692	136.326355	12.836318	0.500	60 M
693	136.327896	12.828086	0.500	60 M
694	136.329361	12.819840	0.500	60 M
695	136.330750	12.811584	0.500	60 M
696	136.332092	12.803315	0.500	60 M
697	136.333344	12.795035	0.500	60 M
698	136.334518	12.786746	0.500	60 M
699	136.335648	12.778447	0.500	60 M
700	136.336685	12.770141	0.500	60 M
701	136.337662	12.761824	0.500	60 M
702	136.338562	12.753501	0.500	60 M
703	136.339401	12.745172	0.500	60 M
704	136.340164	12.736834	0.500	60 M
705	136.340851	12.728491	0.500	60 M
706	136.341461	12.720142	0.500	60 M
707	136.342010	12.711790	0.500	60 M
708	136.342499	12.703432	0.500	60 M
709	136.342896	12.695071	0.500	60 M
710	136.343231	12.686707	0.500	60 M
711	136.343506	12.678341	0.500	60 M
712	136.343704	12.669972	0.500	60 M
713	136.343826	12.661602	0.500	60 M
714	136.343872	12.653233	0.500	60 M
715	136.343857	12.644862	0.500	60 M
716	136.343765	12.636493	0.500	60 M
717	136.343613	12.628123	0.500	60 M
718	136.343369	12.619756	0.500	60 M
719	136.343079	12.611391	0.500	60 M
720	136.342697	12.603028	0.500	60 M
721	136.342255	12.594669	0.500	60 M
722	136.341736	12.586314	0.500	60 M
723	136.341156	12.577963	0.500	60 M
724	136.340500	12.569617	0.500	60 M
725	136.339767	12.561276	0.500	60 M
726	136.338974	12.552942	0.500	60 M
727	136.338104	12.544616	0.500	60 M
728	136.337158	12.536297	0.500	60 M
729	136.336151	12.527986	0.500	60 M
730	136.335068	12.519681	0.500	60 M
731	136.333923	12.511388	0.500	60M



ECS	E Longitude	N Latitude	Distance to next point	Article 76 Provision
Number	Decimal Degrees	Decimal Degrees	Nautical Miles	Invoked
732	136.332703	12.503103	0.500	60 M
733	136.331406	12.494828	0.500	60 M
734	136.330048	12.486566	0.500	60 M
735	136.328384	12.477388	0.557	200 M line of another country



ANNEX 2

Listing of Figures and Maps

- EX-Fig-01 A map of the outer limit of Palau's extended continental shelf claim. Page 6.
- EX-Fig-02 A map of the outer limit of the Southeast Area of Palau's extended continental shelf claim. Page 11.
- EX-Fig-03 A map of the outer limit of the West Area of Palau's extended continental shelf claim. Page 13.
- EX-Fig-04 A map of the outer limit of the North Area of Palau's extended continental shelf claim. Page 15.
- PALAU-MAP-01 A map of the outer limit of Palau's extended continental shelf claim.
- PALAU-MAP-02 A map of the outer limit of the Southeast Area of Palau's extended continental shelf claim.
- PALAU-MAP-03 A map of the outer limit of the West Area of Palau's extended continental shelf claim.
- PALAU-MAP-04 A map of the outer limit of the North Area of Palau's extended continental shelf claim.

