



**Preliminary Information Indicative of
the Outer Limits of the Continental Shelf
Beyond 200 Nautical Miles
for the Eauripik Rise and Mussau Ridge Areas
submitted by**

THE FEDERATED STATES OF MICRONESIA

**Preliminary Information Indicative of the Outer Limits of the
Continental Shelf Beyond 200 Nautical Miles
for the Eauripik Rise and Mussau Ridge Areas
Submitted by the Federated States of Micronesia**

1. The Federated States of Micronesia is a Party to the 1982 United Nations Convention on the Law of the Sea ('the Convention'), having acceded to the Convention on 29 April 1991.
2. The Federated States of Micronesia is mindful of its obligations under the Convention and of the importance of the work of the Commission on the Limits of the Continental Shelf ('the Commission') for coastal States and the international community as a whole.
3. The Federated States of Micronesia notes that it made a joint submission with Papua New Guinea and the Solomon Islands to the Commission prior to the 13th day of May, 2009 concerning the Ontong Java Plateau Region. In the joint submission the three coastal States noted that this was a partial submission in respect of one portion of the continental shelf beyond 200 nautical miles (M) from the territorial sea baselines of each of the three States.
4. Pursuant to the "*Decision regarding the workload of the Commission on the Limits of the Continental Shelf and the ability of States, particularly developing States, to fulfil the requirements of article 4 of annex II to the United Nations Convention on the Law of the Sea, as well as the decision contained in SPLOS/72, paragraph (a)*" adopted by the Eighteenth Meeting of the States Parties to the Convention (SPLOS/183), the Federated States of Micronesia submits the following preliminary information indicative of the outer limits of its continental shelf beyond 200 M in respect of two separate areas:
 - a) The Eauripik Rise
 - b) The Mussau Ridge
5. The Federated States of Micronesia recognises that, in each of these areas, there are overlapping claims to continental shelf beyond 200 M by opposite or adjacent coastal States. The Federated States of Micronesia submits this preliminary information on the understanding that it is without prejudice to the delimitation of the continental shelf in this area.
6. The Federated States of Micronesia also notes that several maritime delimitations remain outstanding between it and opposite and adjacent coastal States. Pursuant to Article 76, paragraph 10 and Article 9 of Annex II to the Convention, this preliminary information is submitted without prejudice to these delimitations and to any other maritime delimitation between the Federated States of Micronesia and any other coastal State.
7. In accordance with operative paragraph 1(a) of SPLOS/183, preliminary information indicative of the outer limits of the continental shelf beyond 200 M

in the Eauripik Rise and the Mussau Ridge areas is depicted in Figures 1 and 2, respectively, relating to each area and also submitted as A0 maps (EAU-MAP-SPLOS183, and MUS-MAP-SPLOS183).

8. The Federated States of Micronesia also notes that, for the purpose of operative paragraph 1(a) of SPLOS/183, work to prepare partial submissions in respect of the Eauripik Rise and Mussau Ridge areas has commenced. The necessary legal, policy and technical expertise has been assembled and trained for this purpose; the compilation of available public domain data has been completed; the analysis of existing data and other materials in accordance with article 76 of the Convention is nearing completion; and preparation of the submission has commenced. The Federated States of Micronesia is also examining avenues for acquiring further and better data relating to the Eauripik Rise and Mussau Ridge areas for the purposes of completing its submissions. In addition, the Federated States of Micronesia has prepared a separate partial submission jointly with other States relating to a substantial and complex area of continental shelf beyond 200 M associated with the Ontong Java Plateau, as referred to in paragraph 3 above.
9. The Federated States of Micronesia is engaged in ongoing discussions with the relevant opposite and adjacent coastal States in the Eauripik Rise and Mussau Ridge areas.
10. In addition to the resources that the Federated States of Micronesia has committed to this work, it has sought and obtained funding from the *“Trust fund for the purpose of facilitating the preparation of submissions to the Commission on the Limits of the Continental Shelf for developing States, in particular the least developed countries and small island developing States, and compliance with article 76 of the United Nations Convention on the Law of the Sea”* which has enabled them to purchase specialised software and to undertake requisite training.
11. The Federated States of Micronesia notes that it intends to lodge submissions in respect of both the Eauripik Rise and Mussau Ridge areas by the end of 2017, mindful of the need to support the Commission in the performance of its function under the Convention in an efficient and timely manner. In this regard, the Federated States of Micronesia will continue to take advantage of available data and opportunities for scientific and technical capacity building, advice and assistance in order to prepare these submissions.
12. The Federated States of Micronesia notes that in accordance with operative paragraph 1(b) of SPLOS/183, pending the receipt of the submissions concerning the Eauripik Rise and Mussau Ridge areas, the preliminary information submitted by the Federated States of Micronesia in accordance with paragraph 1(a) of SPLOS/183, shall not be considered by the Commission.
13. The Federated States of Micronesia also notes that in accordance with operative paragraph 1(c) of SPLOS/183, the preliminary information submitted

is without prejudice to the future submissions concerning the Eauripik Rise and Mussau Ridge areas and their consideration by the Commission.

14. The Federated States of Micronesia requests that the Secretary-General inform the Commission and notify member States of the receipt of this preliminary information in accordance with operative paragraph 1(d) of SPLOS/183.

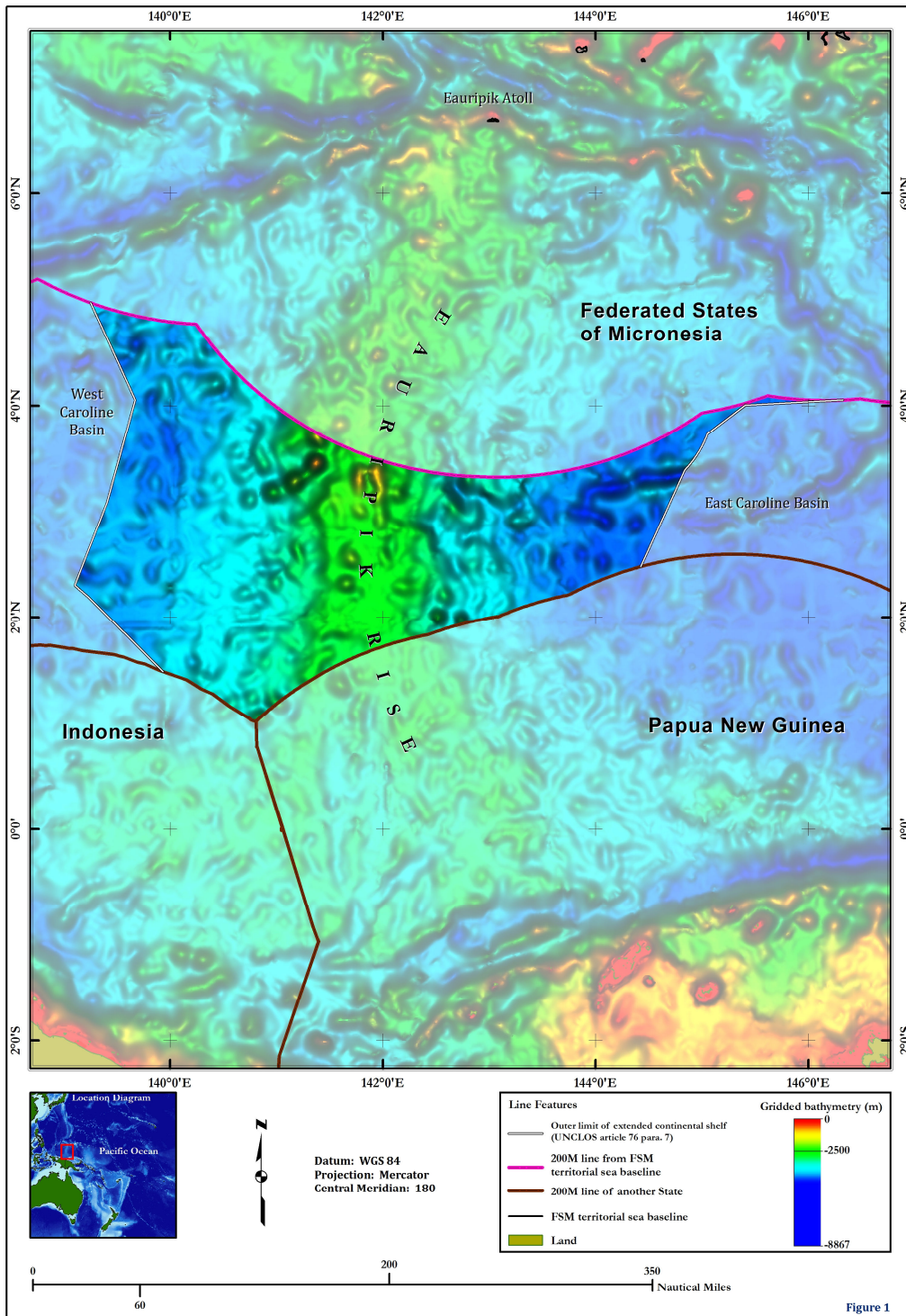


Figure 1. Map for the Eauripik Rise region depicting the outer limit of the continental shelf and the area of the continental shelf of the Federated States of Micronesia that extends beyond 200 nautical miles from its territorial sea baselines.

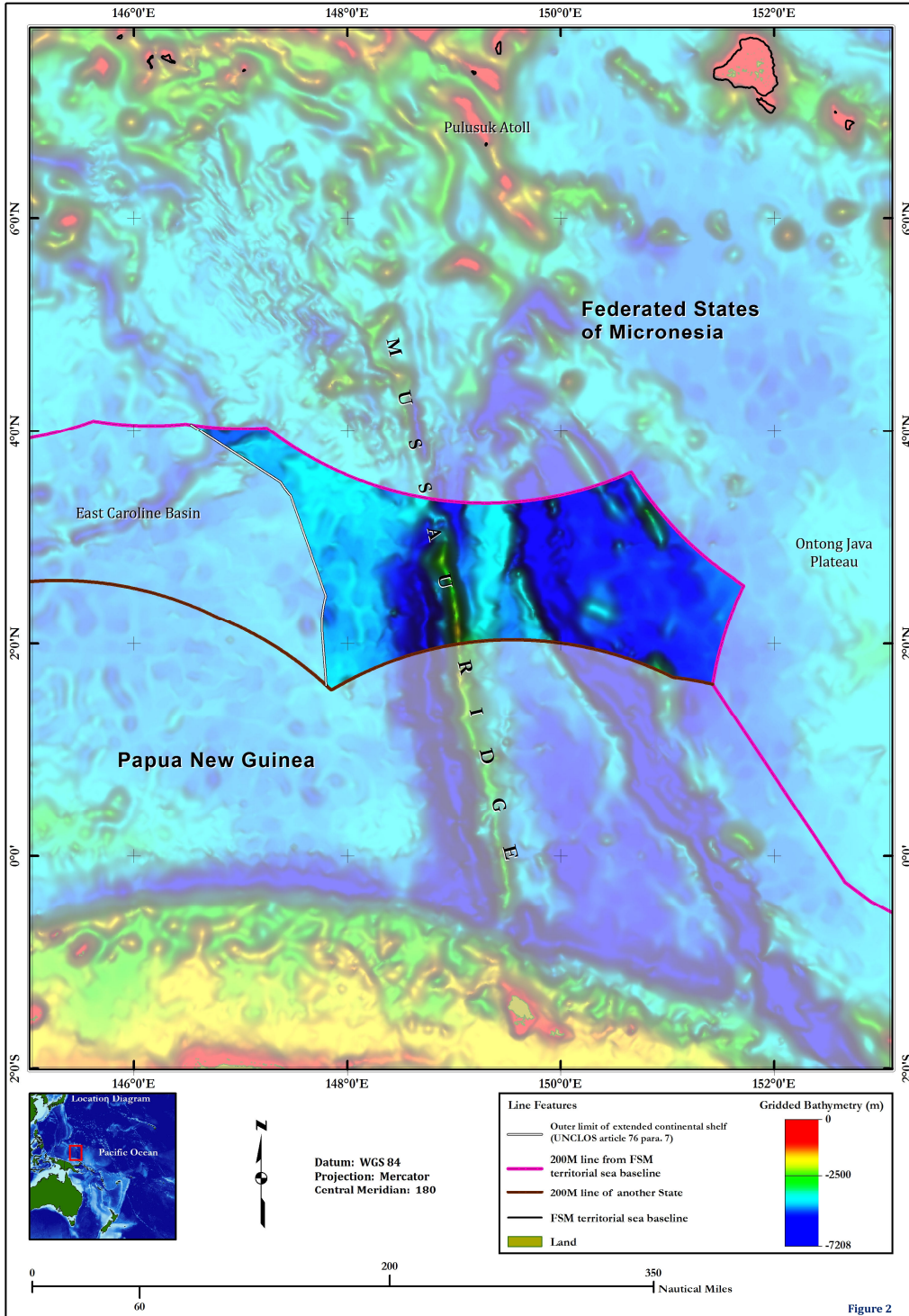


Figure 2. Map for the Mussau Ridge region depicting the outer limit of the continental shelf and the area of the continental shelf of the Federated States of Micronesia that extends beyond 200 nautical miles from its territorial sea baselines.