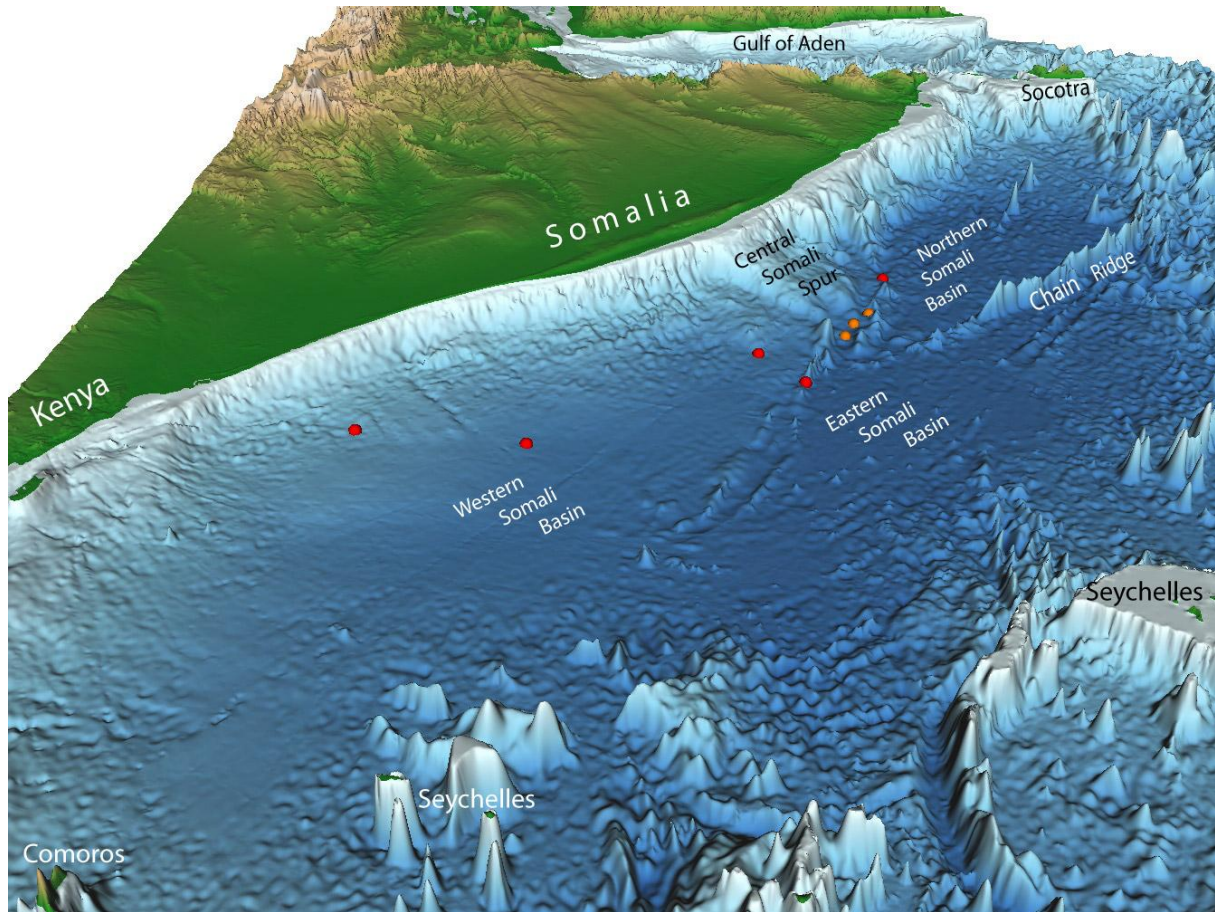


APPENDIX 1  
FIGURES



*Figure 1: Three dimensional view of the continental margin of Somalia and the north western Indian Ocean with names on key submarine features. Coloured spheres represent FOS points.*

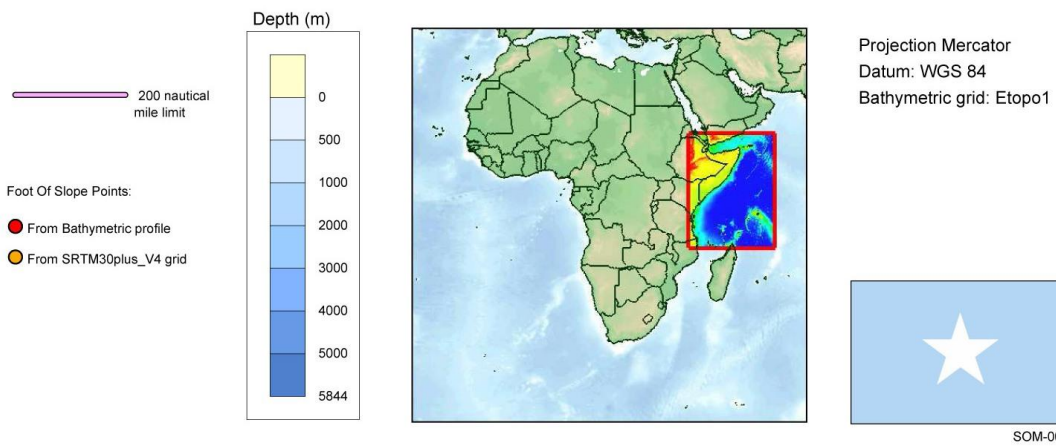
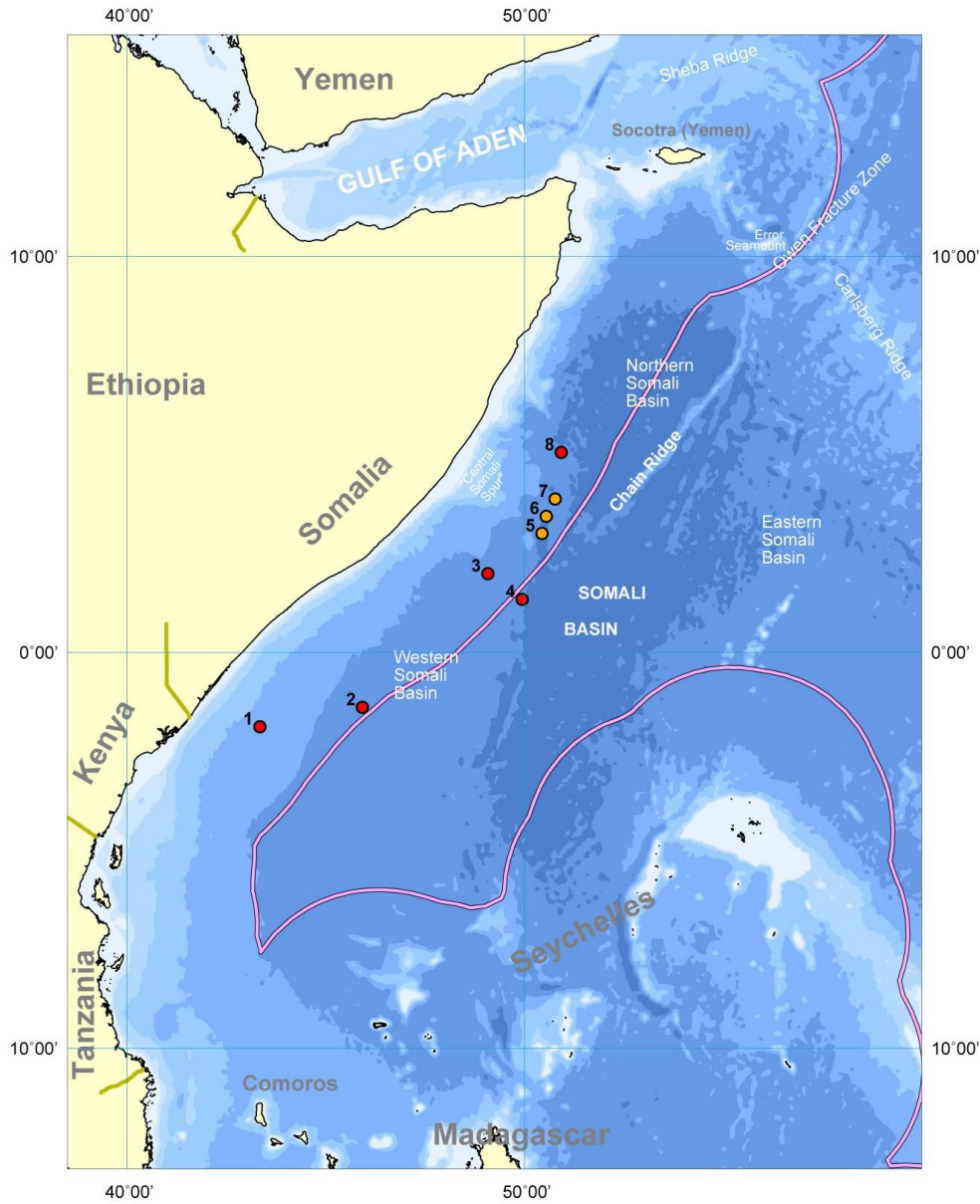


Figure 2: Map of north western Indian Ocean and adjacent coasts with names of key submarine features.

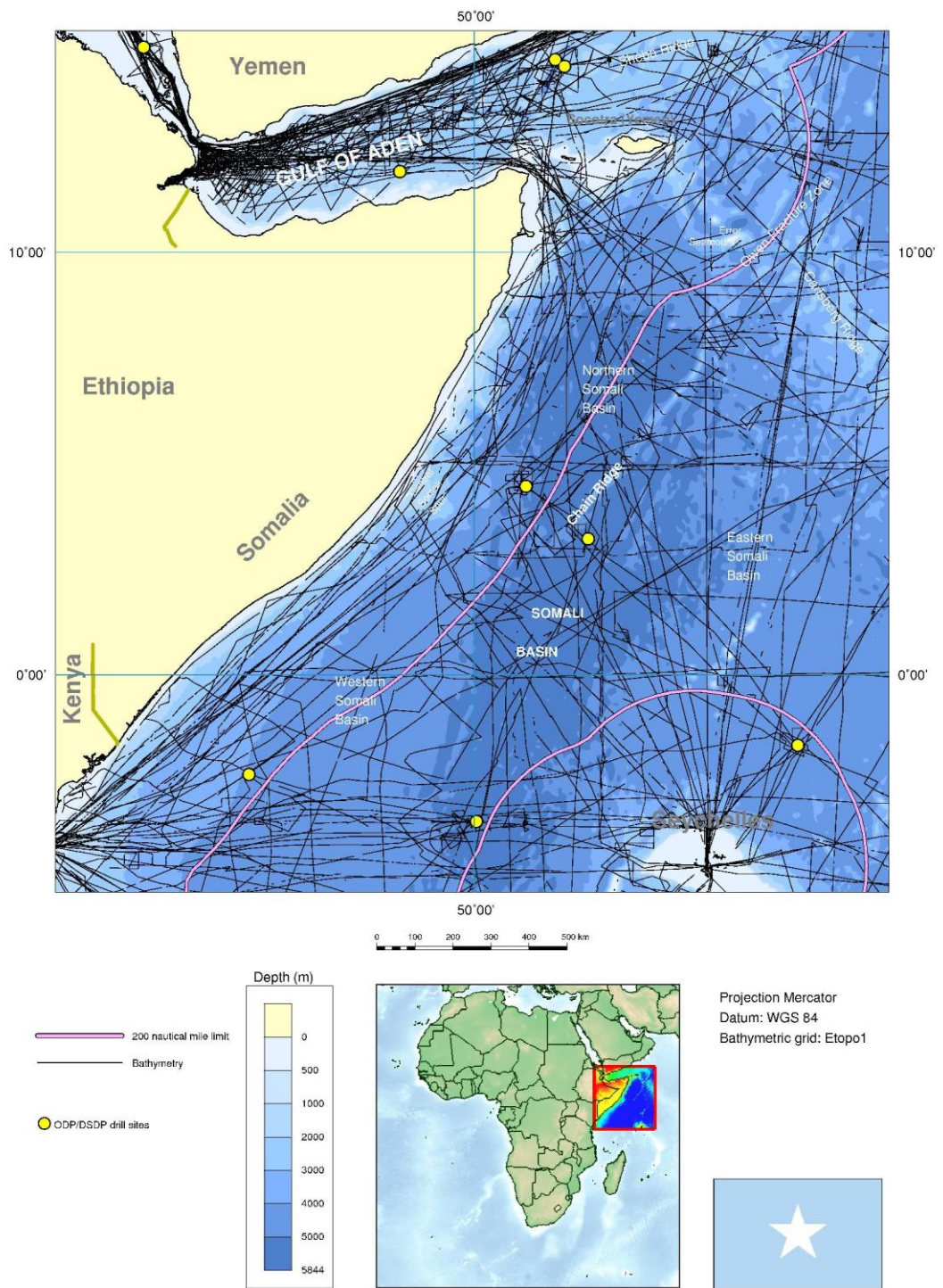


Figure 3: Map showing echo sounder single beam corrected depth measurements and the position of DSDP/ODP drill sites.

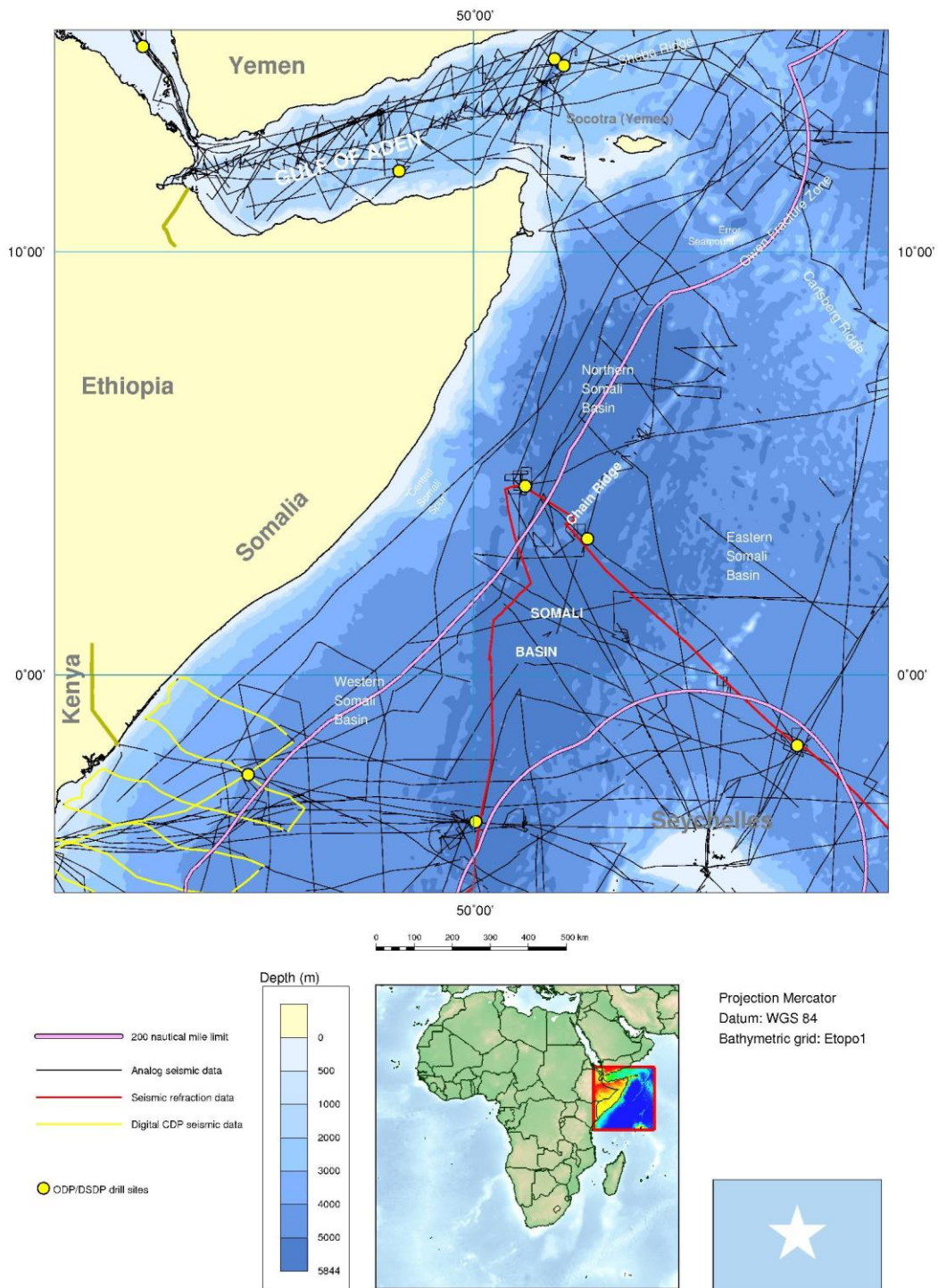
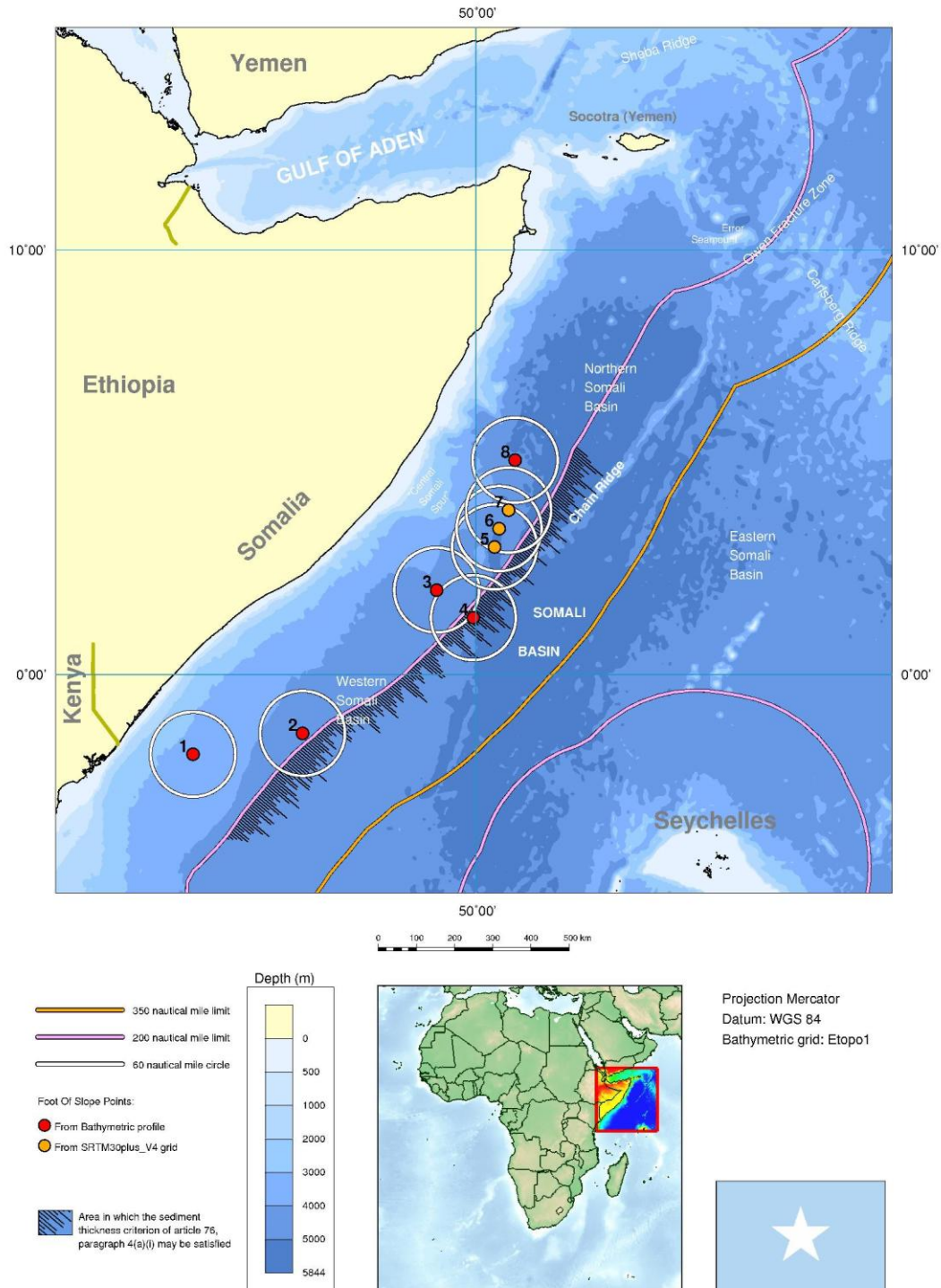


Figure 4: Map showing analog, CDP and refraction seismic data and the position of DSDP/ODP drill sites.



*Figure 5: Map showing the location of eight FOS points. These FOS points generate continental shelf area beyond 200 M based on the sediment thickness criterion and/or the 60 M distance criterion of article 76 paragraphs 4(a)(i) and 4(a)(ii), respectively. Five of these FOS points are described in more detail in Section 7.2.1 to 7.2.5 and Figures 6 to 10.*

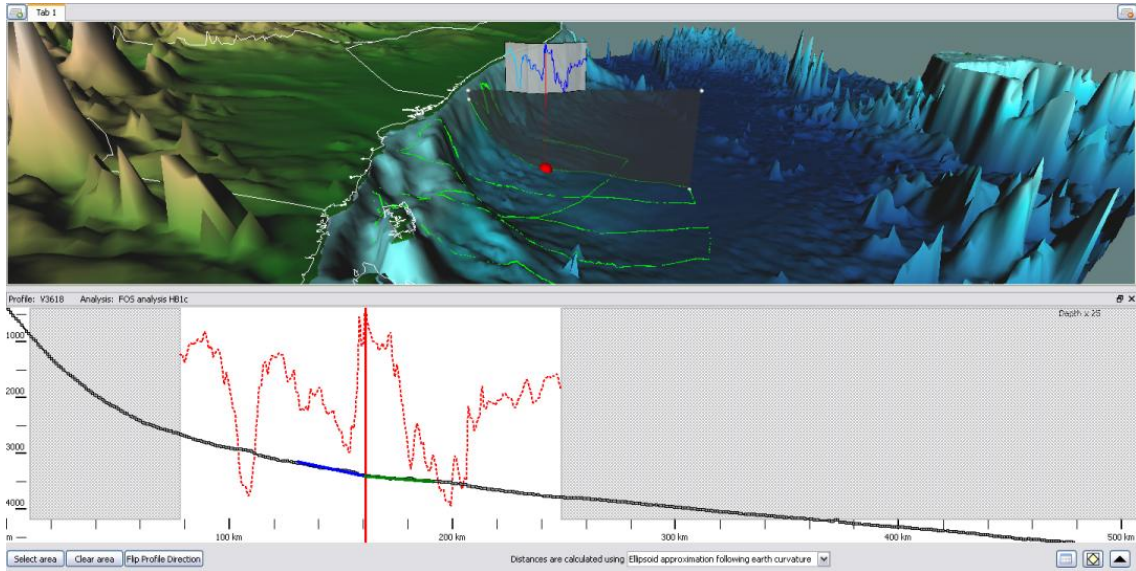


Figure 6: Analysis of point FOS-1 at the base of the continental slope, based on bathymetric profile V3618 (lower panel). The upper panel shows a 3D view of the continental margin of Somalia viewed from south towards north, including the location of FOS-1 (red circle) and the bathymetric profile V3618 (grey shaded panel). Point FOS-1 has been calculated to be the point of maximum change in average gradient across the area of the base of the slope based on the 2<sup>nd</sup> derivative of the slope (red dotted graph in lower panel).

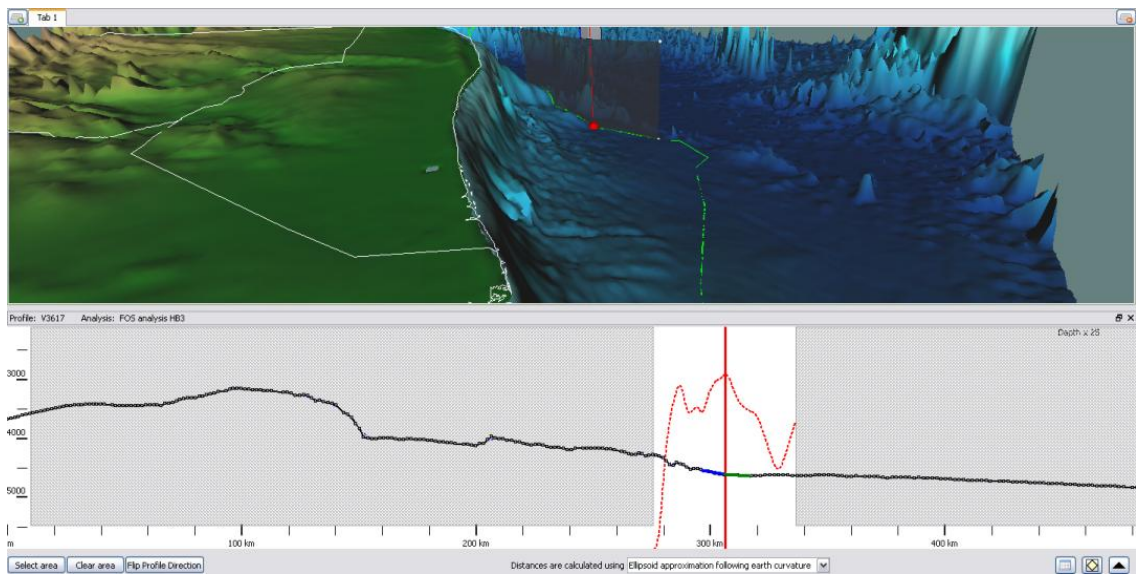


Figure 7: Analysis of point FOS-3 at the base of the continental slope, based on bathymetric profile V3617 (lower panel). The upper panel shows a 3D view of the continental margin of Somalia viewed from south towards north, including the location of point FOS-3 (red sphere) and the bathymetric profile V3617 (grey shaded panel). Point FOS-3 has been calculated to be the point of maximum change in average gradient across the area of the base of the slope based on the 2<sup>nd</sup> derivative of the slope (red dotted graph in lower panel).

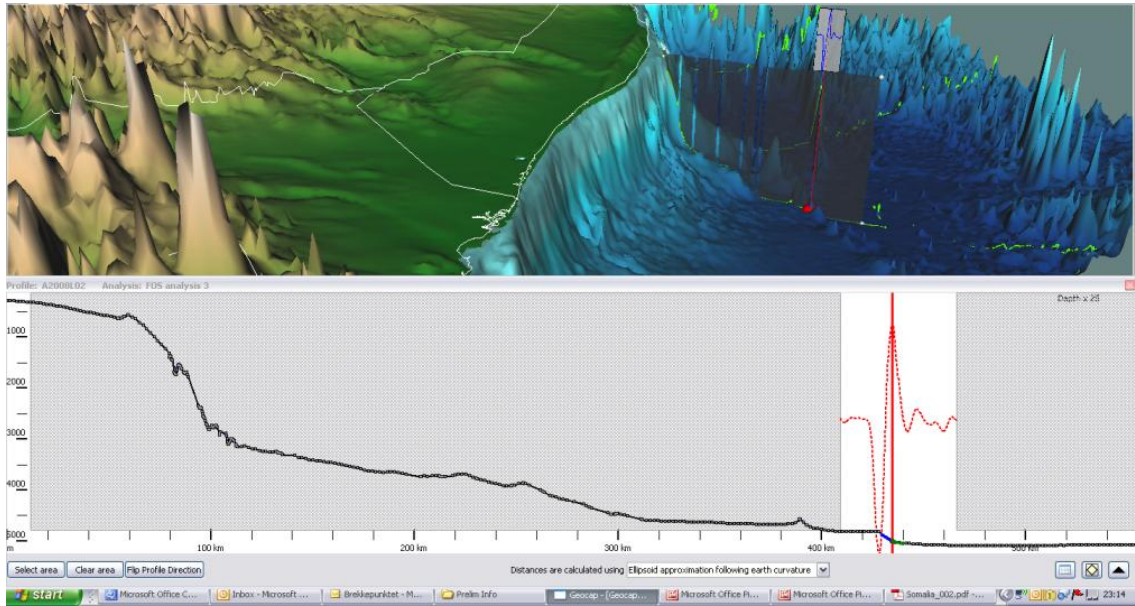


Figure 8: Analysis of point FOS-4 at the base of the continental slope, based on bathymetric profile A8008L02 (lower panel). The upper panel shows a 3D view of the continental margin of Somalia viewed from south towards north, including the location of point FOS-4 (red sphere) and the bathymetric profile A8008L02 (grey shaded panel). Point FOS-4 has been calculated to be the point of maximum change in average gradient across the area of the base of the slope based on the 2<sup>nd</sup> derivative of the slope (red dotted graph in lower panel).

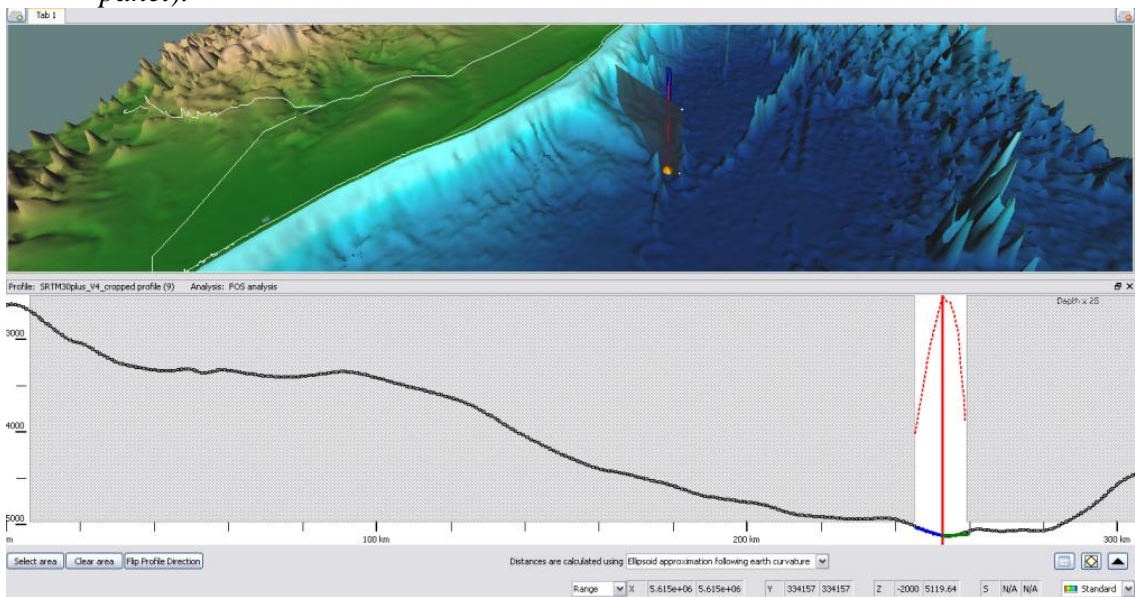


Figure 9: Analysis of point FOS-5 at the base of the continental slope, based on a synthetic bathymetric profile extracted from the satellite derived bathymetric grid SRTM30plus\_V4 (lower panel). The upper panel shows a 3D view of the continental margin of Somalia viewed from south towards north, including the location of point FOS-5 (orange sphere) and the bathymetric profile (grey shaded panel). The point FOS-5 has been calculated to be the point of maximum change in average gradient across the area of the base of the slope based on the 2<sup>nd</sup> derivative of the slope (red dotted graph in lower panel).

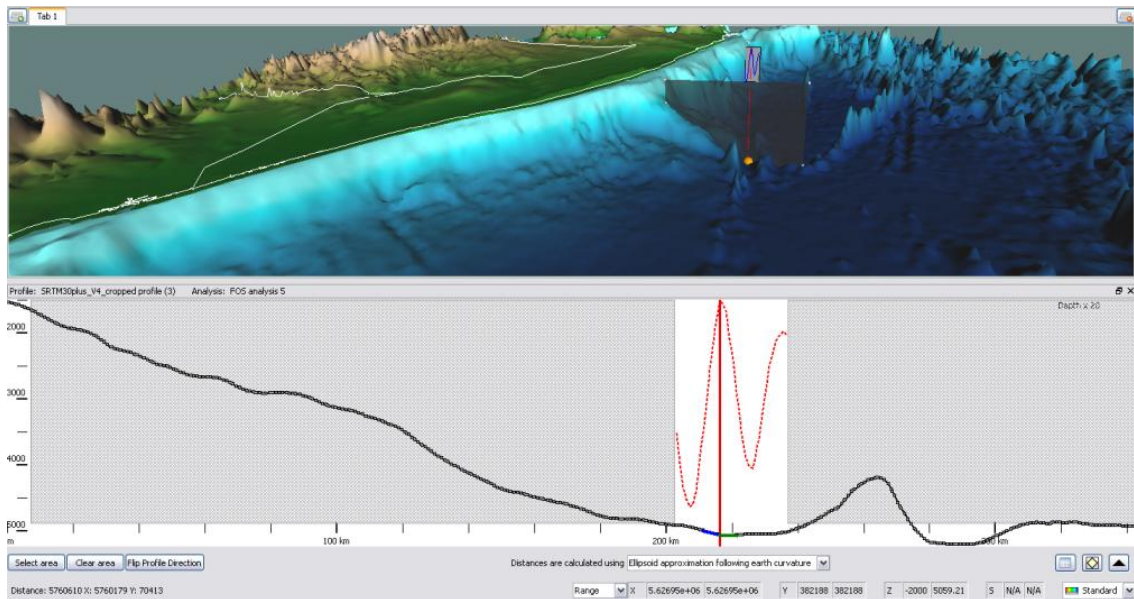


Figure 10: Analysis of point FOS-6 at the base of the continental slope, based on a synthetic bathymetric profile extracted from the satellite derived bathymetric grid SRTM30plus\_V4 (lower panel). The upper panel shows a 3D view of the continental margin of Somalia viewed from south towards north, including the location of the point FOS-6 (orange sphere) and the bathymetric profile (grey shaded panel). The point FOS-6 has been calculated to be the point of maximum change in average gradient across the area of the base of the slope based on the 2<sup>nd</sup> derivative of the slope (red dotted graph in lower panel).

Regarding the use of the SRTM30plus\_V4 in the above figures, the following is observed:

David T. Sandwell, Walter H. F. Smith, and Joseph J. Becker Copyright 2008  
 The Regents of the University of California  
 All Rights Reserved

Permission to copy, modify and distribute any part of this gridded bathymetry at 30 second resolution for educational, research and non-profit purposes, without fee, and without a written agreement is hereby granted, provided that the above copyright notice, this paragraph and the following three paragraphs appear in all copies.

Those desiring to incorporate this global bathymetry into commercial products or use for commercial purposes should contact the Technology Transfer & Intellectual Property Services, University of California, San Diego, 9500 Gilman Drive, Mail Code 0910, La Jolla, CA 92093-0910, Ph: (858) 534-5815, FAX: (858) 534-7345, E-MAIL: invent@ucsd.edu.

IN NO EVENT SHALL THE UNIVERSITY OF CALIFORNIA BE LIABLE TO ANY PARTY FOR DIRECT, INDIRECT, SPECIAL, INCIDENTAL, OR CONSEQUENTIAL DAMAGES, INCLUDING LOST PROFITS, ARISING OUT OF THE USE OF THIS global bathymetry, EVEN IF THE UNIVERSITY OF CALIFORNIA HAS BEEN ADVISED OF THE POSSIBILITY OF SUCH DAMAGE.

THE global bathymetry PROVIDED HEREIN IS ON AN "AS IS" BASIS, AND THE UNIVERSITY OF CALIFORNIA HAS NO OBLIGATION TO PROVIDE MAINTENANCE, SUPPORT, UPDATES, ENHANCEMENTS, OR MODIFICATIONS. THE UNIVERSITY OF CALIFORNIA MAKES NO REPRESENTATIONS AND EXTENDS NO WARRANTIES OF ANY KIND, EITHER IMPLIED OR EXPRESS, INCLUDING, BUT NOT LIMITED TO, THE IMPLIED WARRANTIES OF MERCHANTABILITY OR FITNESS FOR A PARTICULAR PURPOSE, OR THAT THE USE OF THE global bathymetry WILL NOT INFRINGE ANY PATENT, TRADEMARK OR OTHER RIGHTS.