

Continental Shelf Submission of the Federal Republic of Somalia



Executive Summary Amended

TABLE OF CONTENTS

1.	Introduction.....	1
2.	Maritime Areas, Maps and Coordinates	2
3.	Assistance and Advice Received During the Preparation of thE Amendment.....	2
4.	The Outer Limits of the Continental Shelf of Somalia - Baselines	2
5.	Provisions of Article 76 Invoked in Support of the Submission	3
6.	General Description of the Continental Margin of Somalia	3
7.	Maritime Delimitations and Other Issues	5
	A. Maritime Areas Between Somalia and Kenya	5
	B. Maritime Areas Between Somalia and Yemen	7
	C. Maritime Delimitation Between Somalia and Tanzania.....	7
8.	The Outer Limits of the Somali Continental Shelf	7
	Appendix 1. List of coordinates defining the outer limit of the continental shelf of the Republic of Somalia.....	10

LIST OF FIGURES

Figure 1. Geomorphological structural setting of the East African Continental Margin.....	4
Figure 2. The outer limits of the continental shelf of Somalia showing the provisions of Article 76 invoked	9

1. INTRODUCTION

Somalia ratified the United Nations Convention on the Law of the Sea (hereinafter referred to as “the Convention”) on 24 July 1989. The Convention entered into force for Somalia on 16 November 1994.

Article 4 of Annex II to the Convention stipulates that where a coastal State intends to establish, in accordance with Article 76, the outer limits of its continental shelf beyond 200 nautical miles from the baselines from which the breadth of the territorial sea is measured, it should submit particulars of such limits to the Commission on the Limits of the Continental Shelf (hereinafter referred to as “the Commission”), along with supporting scientific and technical data as soon as possible, but in any case within ten years from the entry into force of the Convention for that State.

In 2001, the Eleventh Meeting of States Parties to the Convention decided that in the case of a State Party for which the Convention entered into force before 13 May 1999, it is understood that the ten-year time period referred to in Article 4 of Annex II to the Convention shall be taken to have commenced on 13 May 1999 (document SPLOS/72, paragraph (a)). This decision applied to Somalia. Consequently, in the case of Somalia the ten-year time period referred to in Article 4 of Annex II of the Convention expired on 13 May 2009.

The Eleventh Meeting of States Parties to the Convention also decided that the general issue of the ability of States, particularly developing States, to fulfil the requirements of Article 4 of Annex II to the Convention be kept under review (document SPLOS/72, paragraph (b)). Due to lack of financial and technical resources, relevant capacity and expertise, or other similar constraints, many developing countries were facing particular challenges in meeting these requirements.

In June 2008, the Eighteenth Meeting of States Parties to the Convention therefore decided that it is understood that the ten-year period referred to in Article 4 of Annex II to the Convention could be satisfied by submitting preliminary information indicative of the outer limits of the continental shelf beyond 200 nautical miles from the baselines from which the breadth of the territorial sea is measured, together with a descriptive report on the status of preparation and intended date of the final submission (document SPLOS/183, paragraph 1 (a)).

Due to a lack of financial and technical resources and relevant capacity and expertise, Somalia was among the developing States that faced particular challenges in fulfilling the requirements of Article 4 of Annex II to the Convention.

On this basis, in October 2008, the Special Representative of the Secretary-General of the United Nations for Somalia (hereinafter referred to as “the SRSG”), Mr. Ahmedou Ould Abdallah, initiated the preparation of preliminary information, as defined above, regarding the outer limits of the continental shelf of Somalia beyond 200 nautical miles from the baselines from which the breadth of the territorial sea is measured, with the aim of submitting this to the Secretary-General in accordance with the decision set out in SPLOS/183. In order to prepare this material, the SRSG accepted an offer of assistance from the Government of Norway. On 14 April 2009 the Transitional Federal Government (hereinafter referred to as “the TFG”) of the Republic of Somalia submitted such preliminary information to the Secretary-General of the United Nations.

In August 2009, at the request of the TFG, the Norwegian Government agreed to proceed with providing assistance towards the preparation of a full submission. The initial submission was made on 21 July 2014 (hereinafter referred to as “the 2014 Submission”). It was carried out jointly by the Royal Norwegian Ministry of Foreign Affairs, the Norwegian Mapping Authority, the Norwegian Petroleum Directorate and GRID-Arendal.

This Amended Executive Summary forms part of an Amendment (hereinafter, “Amendment”) to the 2014 Submission to the Commission pursuant to Article 76, paragraph 8 of the Convention.

This Amended Executive Summary is intended to replace the Executive Summary submitted to the United Nations Division for Ocean Affairs and the Law of the Sea (hereinafter referred to as “DOALOS”) on 21 July 2014, as well as to serve and safeguard the present and future interests of the Somalia and its people. The main body of the Amendment will be submitted in due course.

2. MARITIME AREAS, MAPS AND COORDINATES

The data and information contained in this Amended Executive Summary are intended to enable the establishment of the outer limits of the continental shelf of Somalia where those limits extend beyond 200 nautical miles from the baselines from which the breadth of the territorial sea is measured in the high seas in the north-western Indian Ocean.

In accordance with the Scientific and Technical Guidelines of the Commission, this Amended Executive Summary includes a map showing the outer limits of the continental shelf (Figure 2) and a list of the coordinates of the fixed points used to define the outer limits of the continental shelf beyond 200 nautical miles, the distance in nautical miles between adjacent points, and the provision of article 76 on which each point is based (Appendix 1).

3. ASSISTANCE AND ADVICE RECEIVED DURING THE PREPARATION OF THE AMENDMENT

The Amendment is being prepared by the Ministry of Foreign Affairs with no assistance or advice from any member of the CLCS.

4. THE OUTER LIMITS OF THE CONTINENTAL SHELF OF SOMALIA - BASELINES

The present Amendment deals with the establishment of the outer limits of the continental shelf of Somalia, without prejudice to any issues of bilateral maritime delimitation with neighbouring States. Such issues will be referred to under item 7 below.

Two areas of Somalia’s coastline satisfy the provisions for establishing straight baselines. The first is an Article 10 straight bay closure located near Raas Xaafuun. The mouth of this bay is partially closed off by a sand spit that spans nearly half of its relatively small opening to the Indian Ocean. The surface area of the waters enclosed by this juridical bay covers approximately 202 sq. km.

The second coastal area that warrants straight baselines is a short segment of Somalia’s coastline located near the town of Kismaayo. Starting at a point just south of the town and

proceeding south for nearly one full degree of latitude (approximately 60 nautical miles), the coast is fringed by a series of near shore islands, known collectively as the Baajuun Islands. As prescribed in Article 7, paragraph 1, of the Convention, a series of eleven separate straight base lines have been used to interconnect these coastal features.

In summary, Somalia's baselines are comprised primarily of "normal base lines" defined by a series of 495 base points, which indicate the most seaward positions on the Somali low-tide coast. The points are then supplemented by a single bay closure in the north and a series of straight baselines further south near the town of Kismaayo and also a series of straight baselines further north near Zeila. These points and lines represent the basis for establishing Somalia's zones of maritime jurisdiction in accordance with the provisions of the Convention.

5. PROVISIONS OF ARTICLE 76 INVOKED IN SUPPORT OF THE SUBMISSION

Somalia invokes the provisions of paragraphs 1, 3, 4 and 5 of Article 76 in support of the establishment of the outer limits of the continental shelf beyond 200 nautical miles, based on the considerations outlined in Section 6. Both the "Hedberg" and "Gardiner" formulae lines have been used in this submission. The outer limits of the continental shelf have been delineated by fixed points connected by straight lines not exceeding 60 nautical miles in length, as set out in the provisions of Article 76, paragraph 7 (see Figure 2).

6. GENERAL DESCRIPTION OF THE CONTINENTAL MARGIN OF SOMALIA

The Somali continental margin in the south is characterised by a narrow continental shelf which broadens slightly to the north. A pronounced submarine spur (the Central Somali Spur) is observed extending to the east midway between the Somali-Kenya border in the south and the tip of the Horn of Africa in the north. South of the Central Somali Spur, the continental slope exhibits a smooth gradient, in contrast to the more complex morphology to the north. The slope extends to the deep abyssal plain of the Somali Basin at a depth of about 5000 m.

The Somali Basin is subdivided into three sub-basins. The Central Somali Spur separates the Northern Somali Basin in the north from the Western Somali Basin in the south. The Eastern Somali Basin is located to the east, separated from the two aforementioned sub-basins by south-west and south-trending seafloor ridges, including the Chain Ridge (*see* Figure 1).

The Chain Ridge extends northwards until it links with the southern flank of the Carlsberg Ridge, whence it merges with the southern termination of the Owen Fracture Zone, which in turn connects the Carlsberg Ridge to the Sheba Ridge to the north.

The Carlsberg Ridge constitutes the northern extension of the Central Indian Ridge, which is the active spreading ridge of the Indian Ocean. The Sheba Ridge continues westwards from the Owen Fracture Zone, extending north of Socotra and into the Gulf of Aden and the Red Sea.

The northern continental margin in this area between Somalia and Yemen/Oman is characterized by steep gradients on a 25 to 60 km wide shelf between Berbera and just west of Cape Guardafui where the margin widens to approximately 90 km. The margin continues

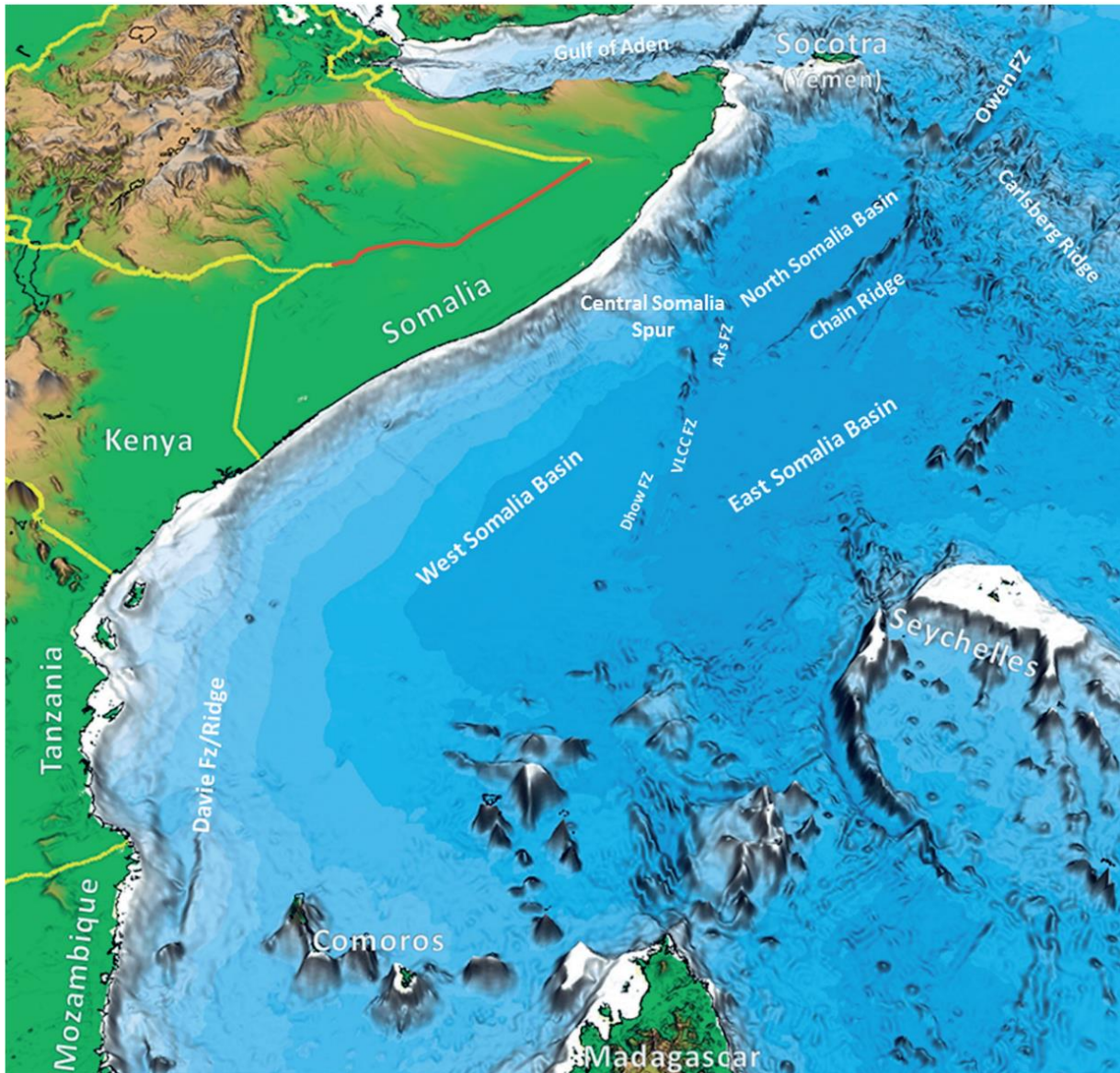


Figure 1. Geomorphological structural setting of the East African Continental Margin

east of Cape Guardafui and around the Socotra Platform to the south, where it merges with the northern extension of the Chain Ridge.

The details of the opening of the Indian Ocean are still subject to ongoing research but it is clear that the margin of Somalia is part of a passive continental margin. The margin was formed in Jurassic times as a result of continental break-up between the African continent and the continental block containing Madagascar and India.

In the Jurassic, as part of the Gondwana supercontinent, Somalia was juxtaposed with Madagascar in the south (south of the Central Somali Spur), and with northern India in the north.

The initial rifting of this region of Gondwana began in the Middle Jurassic, prior to the opening of the Somali Basin. Magnetic anomalies from both the Western and Eastern Somali Basins indicate the presence of old oceanic crust. The magnetic anomalies in the Western Somali Basin are interpreted to represent both limbs of an extinct spreading segment. The crust beneath the small Northern Somali Basin also exhibits relatively low amplitude magnetic anomalies indicative of oceanic crust.

The magnetic anomalies suggest that seafloor spreading commenced in the Late Jurassic (the age of the oldest M22 anomaly), and ceased at anomaly M0 in the Early Cretaceous. A phase of renewed spreading started in the Late Cretaceous causing India to migrate northwards along with the eastern parts of the then single Somali Basin, which was subsequently split by the formation of the Chain Ridge which developed a result of this transcurrent plate movement process.

Remarks on the names of fracture zones SW of the Central Somali Spur: These zones are named after the three principle types of vessels encountered sailing in these waters; the Dhow is an Arab merchant ship, VLCC stands for Very Large Crude Carrier, and ARS for Auxiliary Rescue and Salvage.

7. MARITIME DELIMITATIONS AND OTHER ISSUES

All information and maps contained in this submission are without prejudice to issues of maritime delimitation.

There remain unresolved issues in relation to the bilateral delimitation of the continental shelf with the Federal Republic of Somalia's neighbouring states Kenya and Yemen. These issues will have to be considered by reference to Rule 46 and Annex I of the Rules of Procedure of the Commission.

A. Maritime Areas Between Somalia and Kenya

The dispute on delimitation of the continental shelf between the Federal Republic of Somalia and the Republic of Kenya has not yet been resolved. On the basis of the jurisprudence of the International Court of Justice (hereinafter referred to as "the ICJ") on maritime delimitation and of other international tribunals, Somalia's continental shelf claim extends south to a line of equidistance drawn from the land boundary terminus. The coordinates of this point are given in Table 1 below.

The equidistance line and its points of intersection with the 12 M, 200 M and 350 M limits are described by the following coordinates (Table 1):

PT ID	Latitude (DD)	Lat Deg	Lat Min	Lat Sec	Lat Dir	Longitude (DD)	Lon Deg	Lon Min	Lon Sec	Lon Dir
LBT	-1.6622	1	39	44.07	S	41.5596	41	33	34.57	E
T1	-1.6683	1	40	5.92	S	41.5681	41	34	5.26	E
T2	-1.6865	1	41	11.45	S	41.5684	41	34	6.12	E
T3	-1.7193	1	43	9.34	S	41.6093	41	36	33.52	E
T4	-1.7316	1	43	53.72	S	41.6301	41	37	48.21	E
T5	-1.7359	1	44	9.28	S	41.6370	41	38	13.26	E
T6	-2.3170	2	19	1.09	S	42.4695	42	28	10.27	E
T7	-2.5157	2	30	56.65	S	42.7719	42	46	18.90	E
12M	1.7985	1	47	54.60	S	41.7267	41	43	36.04	E
200M	-3.5825	3	34	57.05	S	44.3138	44	18	49.83	E
350M	-5.0071	5	00	25.69	S	46.3759	46	22	33.34	E

The unresolved issue of delimitation of the continental shelf between the Federal Republic of Somalia and the Republic of Kenya is to be regarded as a “maritime dispute” for the purposes of Article 46 and of Annex I of the Rules of Procedure of the Commission.

The present Amendment by the Federal Republic of Somalia includes the areas under dispute between the two coastal States. However, on 28 August 2014, Somalia seized the ICJ, requesting it to resolve the dispute on maritime delimitation with Kenya, including for the areas beyond 200 nautical miles. The case is ongoing and the Court is expected, within a few years, to determine with binding force the maritime boundary between Somalia and Kenya. Somalia’s maritime rights are therefore protected in those proceedings. Moreover, since “the recommendations approved by the Commission (...) shall not prejudice the position of States which are parties to a (...) maritime dispute” (Rule 5b of Annex I of the Rules of the Commission), and since the coastal States “are to cooperate with [the Commission] in order not to prejudice matters relating to the delimitation of boundaries” (Rule 6 of Annex I), Somalia decided that there is no longer any impediment for the Commission to examine and make recommendations on Kenya’s and its own submissions.

B. Maritime Areas Between Somalia and Yemen

The delimitation of the continental shelf between the Federal Republic of Somalia and the Republic of Yemen has not yet been resolved. Based on the current Amendment and the information published on the Commission’s website regarding the Executive Summary of the submission made by the Republic of Yemen, it is evident that there is an overlap between Somali and Yemeni claims as regards the areas of the continental shelf beyond 200 nautical miles.

Unresolved delimitation issues between two coastal States, as well as any overlap between the areas of the continental shelf beyond 200 nautical miles claimed by them, should be considered by reference to Rule 46 and Annex I of the Rules of Procedure of the Commission. For the purpose of Article 5 (a) of Annex I of these Rules of Procedure, such unresolved delimitation issues should be regarded as a “maritime dispute”. Areas covered by overlapping claims made by the two coastal States constitute for the same purposes “the areas under dispute”.

Somalia is ready to enter into consultations with the Republic of Yemen with a view to reaching an agreement which would allow the Commission to consider and make recommendations on the submissions by each of the two States in the areas under dispute without prejudice to the final delimitation of the continental shelf in the areas under dispute by the two coastal States. Pending such an agreement, Somalia requests the Commission not to take any steps that would prejudice any future bilateral delimitation in the maritime area concerned.

C. Maritime Delimitation Between Somalia and Tanzania

Based on the current Amendment and the information published on the Commission’s website regarding the Executive Summary of the submission made by the United Republic of Tanzania, there is no potential overlap between the Somali and the Tanzanian claims as regards the areas of the continental shelf beyond 200 nautical miles.

8. THE OUTER LIMITS OF THE SOMALI CONTINENTAL SHELF

The outer limits of Somalia’s continental shelf beyond 200 nautical miles is defined by 510 fixed points established in accordance with Article 76 of the Convention. These are as follows:

- 8 points defined by the sediment thickness formula set out in Article 76, paragraph 4(a)(i);
- 346 points defined by arcs constructed 60 nautical miles from the foot of the continental slope in accordance with Article 76, paragraph 4(a)(ii);
- 62 points defined in accordance with the constraint criterion of 350 nautical miles distance from the baseline, provided for in Article 76, paragraph 5; and
- 94 points defined in accordance with the constraint criterion of 100 nautical miles from the 2,500 meter isobaths, provided for in Article 76, paragraph 5.

The 510 fixed points are connected by straight lines not exceeding 60 nautical miles in length, as provided for in Article 76, paragraph 7. The fixed points and connecting lines are shown in Figure 2. A colour code has been used to indicate under which Article 76 criterion each point has been established. (Further details can be found in Appendix 1.)

For the purpose of this Amendment, the northernmost fixed point of the outer limit of the Somali continental shelf is established on the intersection of the Omani 200 nautical mile line and a distance of 60 nautical miles from the northernmost foot of the continental slope point submitted by Somalia (Figure 2).

The southernmost fixed point of the outer limits of the Somali continental shelf is established at the intersection of the 350 nautical mile constraint line and the calculated equidistance line between Somalia and Kenya.

For both the northern- and southern-most fixed points described above, reference is made to the list of coordinates of fixed points contained in Appendix 1. The final outer limit fixed points in the north would have to be determined through bilateral agreements (reference is made to Section 7 above), in accordance with international law; the final outer limit fixed points in the south will be determined by the ICJ in accordance with international law.

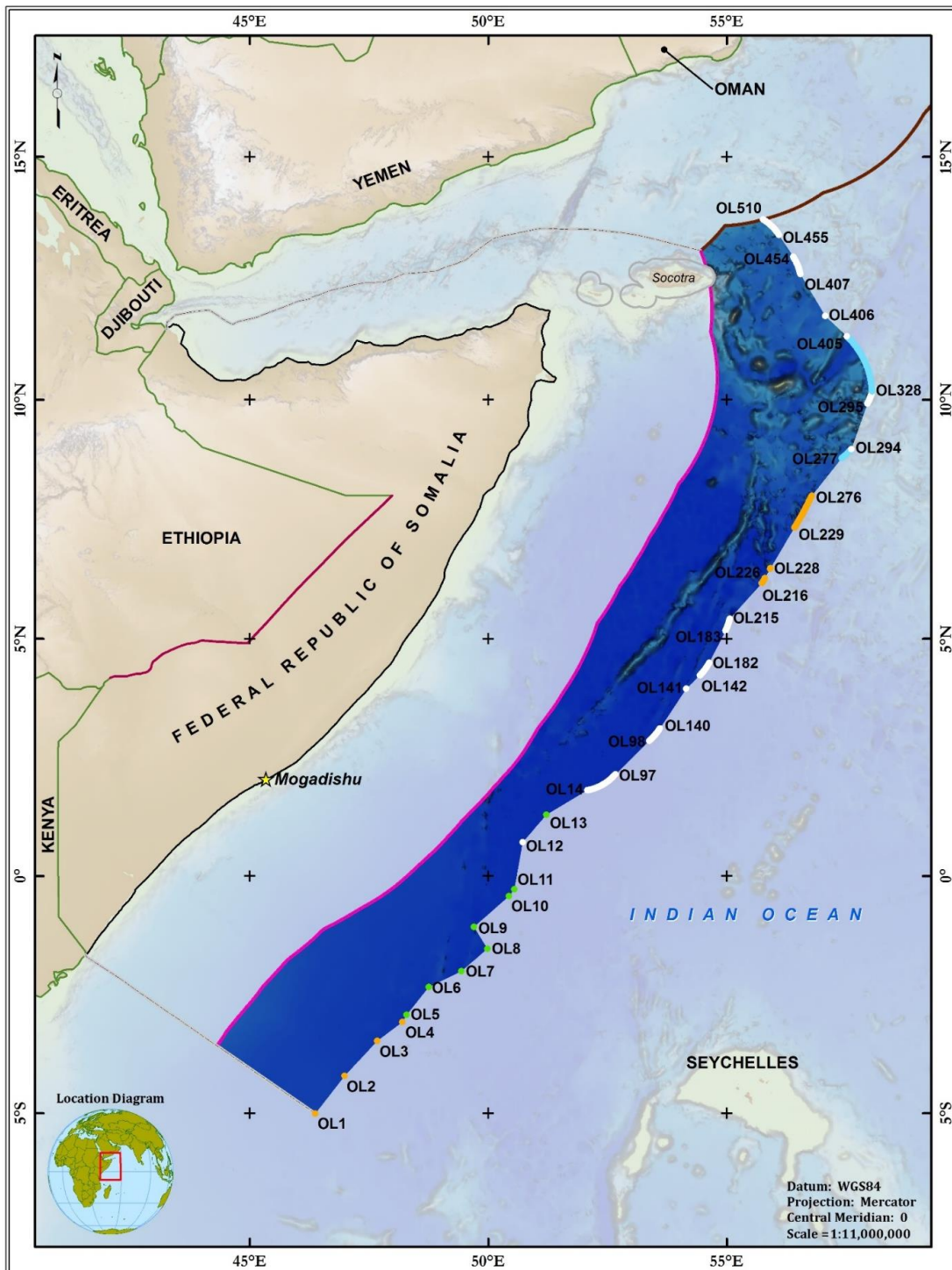


Figure 2. The outer limits of the continental shelf of Somalia showing the provisions of Article 76 invoked
 (Outer limit (OL) fixed points are coloured accordingly: Paragraph 4(a)(i) constructions in green, paragraph 4(a)(ii) in white, 350 M constraint points in orange, and 2500 m isobath plus 100 M constraint points in pale blue)

Appendix 1. List of coordinates defining the outer limit of the continental shelf of the Republic of Somalia

ECS Point	Latitude	Longitude East	Lat, DMS	Long, DMS	Dist from previous (M)	Article 76 provision invoked
OL1	-5.007134	46.375927	5° 00' 25.69" S	46° 22' 33.34" E	0.000	Art. 76(5): 350 M line
OL2	-4.214506	46.991312	4° 12' 52.22" S	46° 59' 28.73" E	59.994	Art. 76(5): 350 M line
OL3	-3.479182	47.673167	3° 28' 45.06" S	47° 40' 23.40" E	59.999	Art. 76(5): 350 M line
OL4	-3.081993	48.202466	3° 04' 55.18" S	48° 12' 08.88" E	39.640	Art. 76(5): 350 M line
OL5	-2.930817	48.289050	2° 55' 50.94" S	48° 17' 20.58" E	10.416	Art. 76(4)(a)(i): 1% Sediment Thickness
OL6	-2.347257	48.750568	2° 20' 50.13" S	48° 45' 02.05" E	44.519	Art. 76(4)(a)(i): 1% Sediment Thickness
OL7	-2.013247	49.434748	2° 00' 47.69" S	49° 26' 05.09" E	45.678	Art. 76(4)(a)(i): 1% Sediment Thickness
OL8	-1.539174	49.982424	1° 32' 21.03" S	49° 58' 56.73" E	43.403	Art. 76(4)(a)(i): 1% Sediment Thickness
OL9	-1.073034	49.700267	1° 04' 22.92" S	49° 42' 00.96" E	32.589	Art. 76(4)(a)(i): 1% Sediment Thickness
OL10	-0.426508	50.430957	0° 25' 35.43" S	50° 25' 51.45" E	58.469	Art. 76(4)(a)(i): 1% Sediment Thickness
OL11	-0.278753	50.543965	0° 16' 43.51" S	50° 32' 38.28" E	11.134	Art. 76(4)(a)(i): 1% Sediment Thickness
OL12	0.710327	50.720397	0° 42' 37.18" N	50° 43' 13.43" E	59.998	Art. 76(4)(a)(ii): FOS + 60M
OL13	1.293256	51.219422	1° 17' 35.72" N	51° 13' 09.92" E	45.943	Art. 76(4)(a)(i): 1% Sediment Thickness
OL14	1.807502	52.077299	1° 48' 27.01" N	52° 04' 38.28" E	59.998	Art. 76(4)(a)(ii): FOS + 60M
OL15	1.808415	52.082388	1° 48' 30.30" N	52° 04' 56.60" E	0.311	Art. 76(4)(a)(ii): FOS + 60M
OL16	1.809952	52.090567	1° 48' 35.83" N	52° 05' 26.04" E	0.500	Art. 76(4)(a)(ii): FOS + 60M
OL17	1.811558	52.098738	1° 48' 41.61" N	52° 05' 55.46" E	0.500	Art. 76(4)(a)(ii): FOS + 60M
OL18	1.813233	52.106894	1° 48' 47.64" N	52° 06' 24.82" E	0.500	Art. 76(4)(a)(ii): FOS + 60M
OL19	1.814975	52.115033	1° 48' 53.91" N	52° 06' 54.12" E	0.500	Art. 76(4)(a)(ii): FOS + 60M
OL20	1.816787	52.123158	1° 49' 00.43" N	52° 07' 23.37" E	0.500	Art. 76(4)(a)(ii): FOS + 60M
OL21	1.818666	52.131270	1° 49' 07.20" N	52° 07' 52.57" E	0.500	Art. 76(4)(a)(ii): FOS + 60M
OL22	1.820612	52.139364	1° 49' 14.21" N	52° 08' 21.71" E	0.500	Art. 76(4)(a)(ii): FOS + 60M
OL23	1.822627	52.147444	1° 49' 21.46" N	52° 08' 50.80" E	0.500	Art. 76(4)(a)(ii): FOS + 60M
OL24	1.824710	52.155507	1° 49' 28.96" N	52° 09' 19.83" E	0.500	Art. 76(4)(a)(ii): FOS + 60M
OL25	1.826860	52.163551	1° 49' 36.70" N	52° 09' 48.79" E	0.500	Art. 76(4)(a)(ii): FOS + 60M
OL26	1.829077	52.171578	1° 49' 44.68" N	52° 10' 17.68" E	0.500	Art. 76(4)(a)(ii): FOS + 60M
OL27	1.831362	52.179586	1° 49' 52.90" N	52° 10' 46.51" E	0.500	Art. 76(4)(a)(ii): FOS + 60M
OL28	1.833714	52.187577	1° 50' 01.37" N	52° 11' 15.28" E	0.500	Art. 76(4)(a)(ii): FOS + 60M
OL29	1.836132	52.195545	1° 50' 10.08" N	52° 11' 43.96" E	0.500	Art. 76(4)(a)(ii): FOS + 60M
OL30	1.838616	52.203490	1° 50' 19.02" N	52° 12' 12.57" E	0.500	Art. 76(4)(a)(ii): FOS + 60M
OL31	1.841167	52.211418	1° 50' 28.20" N	52° 12' 41.11" E	0.500	Art. 76(4)(a)(ii): FOS + 60M
OL32	1.843785	52.219323	1° 50' 37.63" N	52° 13' 09.56" E	0.500	Art. 76(4)(a)(ii): FOS + 60M
OL33	1.846468	52.227206	1° 50' 47.29" N	52° 13' 37.94" E	0.500	Art. 76(4)(a)(ii): FOS + 60M
OL34	1.849218	52.235066	1° 50' 57.19" N	52° 14' 06.24" E	0.500	Art. 76(4)(a)(ii): FOS + 60M
OL35	1.852034	52.242904	1° 51' 07.32" N	52° 14' 34.46" E	0.500	Art. 76(4)(a)(ii): FOS + 60M
OL36	1.854914	52.250719	1° 51' 17.69" N	52° 15' 02.59" E	0.500	Art. 76(4)(a)(ii): FOS + 60M

ECS Point	Latitude	Longitude East	Lat, DMS	Long, DMS	Dist from previous (M)	Article 76 provision invoked
OL37	1.857860	52.258507	1° 51' 28.30" N	52° 15' 30.63" E	0.500	Art. 76(4)(a)(ii): FOS + 60M
OL38	1.860872	52.266273	1° 51' 39.14" N	52° 15' 58.59" E	0.500	Art. 76(4)(a)(ii): FOS + 60M
OL39	1.863949	52.274017	1° 51' 50.22" N	52° 16' 26.46" E	0.500	Art. 76(4)(a)(ii): FOS + 60M
OL40	1.867090	52.281729	1° 52' 01.53" N	52° 16' 54.23" E	0.500	Art. 76(4)(a)(ii): FOS + 60M
OL41	1.870297	52.289419	1° 52' 13.07" N	52° 17' 21.91" E	0.500	Art. 76(4)(a)(ii): FOS + 60M
OL42	1.873567	52.297081	1° 52' 24.84" N	52° 17' 49.49" E	0.500	Art. 76(4)(a)(ii): FOS + 60M
OL43	1.876901	52.304717	1° 52' 36.85" N	52° 18' 16.98" E	0.500	Art. 76(4)(a)(ii): FOS + 60M
OL44	1.880299	52.312326	1° 52' 49.08" N	52° 18' 44.37" E	0.500	Art. 76(4)(a)(ii): FOS + 60M
OL45	1.883762	52.319903	1° 53' 01.54" N	52° 19' 11.65" E	0.500	Art. 76(4)(a)(ii): FOS + 60M
OL46	1.887287	52.327453	1° 53' 14.24" N	52° 19' 38.83" E	0.500	Art. 76(4)(a)(ii): FOS + 60M
OL47	1.890876	52.334972	1° 53' 27.16" N	52° 20' 05.90" E	0.500	Art. 76(4)(a)(ii): FOS + 60M
OL48	1.894528	52.342464	1° 53' 40.30" N	52° 20' 32.87" E	0.500	Art. 76(4)(a)(ii): FOS + 60M
OL49	1.898242	52.349925	1° 53' 53.67" N	52° 20' 59.73" E	0.500	Art. 76(4)(a)(ii): FOS + 60M
OL50	1.902019	52.357354	1° 54' 07.27" N	52° 21' 26.47" E	0.500	Art. 76(4)(a)(ii): FOS + 60M
OL51	1.905858	52.364751	1° 54' 21.09" N	52° 21' 53.11" E	0.500	Art. 76(4)(a)(ii): FOS + 60M
OL52	1.909759	52.372117	1° 54' 35.13" N	52° 22' 19.62" E	0.500	Art. 76(4)(a)(ii): FOS + 60M
OL53	1.913721	52.379452	1° 54' 49.40" N	52° 22' 46.03" E	0.500	Art. 76(4)(a)(ii): FOS + 60M
OL54	1.917744	52.386751	1° 55' 03.88" N	52° 23' 12.31" E	0.500	Art. 76(4)(a)(ii): FOS + 60M
OL55	1.921828	52.394018	1° 55' 18.58" N	52° 23' 38.47" E	0.500	Art. 76(4)(a)(ii): FOS + 60M
OL56	1.925972	52.401250	1° 55' 33.50" N	52° 24' 04.50" E	0.500	Art. 76(4)(a)(ii): FOS + 60M
OL57	1.930177	52.408445	1° 55' 48.64" N	52° 24' 30.40" E	0.500	Art. 76(4)(a)(ii): FOS + 60M
OL58	1.934442	52.415605	1° 56' 03.99" N	52° 24' 56.18" E	0.500	Art. 76(4)(a)(ii): FOS + 60M
OL59	1.938767	52.422733	1° 56' 19.56" N	52° 25' 21.84" E	0.500	Art. 76(4)(a)(ii): FOS + 60M
OL60	1.943151	52.429821	1° 56' 35.35" N	52° 25' 47.36" E	0.500	Art. 76(4)(a)(ii): FOS + 60M
OL61	1.947596	52.436877	1° 56' 51.35" N	52° 26' 12.76" E	0.500	Art. 76(4)(a)(ii): FOS + 60M
OL62	1.952099	52.443893	1° 57' 07.56" N	52° 26' 38.02" E	0.500	Art. 76(4)(a)(ii): FOS + 60M
OL63	1.956661	52.450877	1° 57' 23.98" N	52° 27' 03.16" E	0.500	Art. 76(4)(a)(ii): FOS + 60M
OL64	1.961281	52.457817	1° 57' 40.61" N	52° 27' 28.14" E	0.500	Art. 76(4)(a)(ii): FOS + 60M
OL65	1.965958	52.464720	1° 57' 57.45" N	52° 27' 52.99" E	0.500	Art. 76(4)(a)(ii): FOS + 60M
OL66	1.970695	52.471583	1° 58' 14.50" N	52° 28' 17.70" E	0.500	Art. 76(4)(a)(ii): FOS + 60M
OL67	1.975487	52.478406	1° 58' 31.76" N	52° 28' 42.26" E	0.500	Art. 76(4)(a)(ii): FOS + 60M
OL68	1.980339	52.485193	1° 58' 49.22" N	52° 29' 06.70" E	0.500	Art. 76(4)(a)(ii): FOS + 60M
OL69	1.985245	52.491939	1° 59' 06.88" N	52° 29' 30.98" E	0.500	Art. 76(4)(a)(ii): FOS + 60M
OL70	1.990209	52.498645	1° 59' 24.75" N	52° 29' 55.12" E	0.500	Art. 76(4)(a)(ii): FOS + 60M
OL71	1.995228	52.505306	1° 59' 42.82" N	52° 30' 19.10" E	0.500	Art. 76(4)(a)(ii): FOS + 60M
OL72	2.000303	52.511927	2° 00' 01.09" N	52° 30' 42.94" E	0.500	Art. 76(4)(a)(ii): FOS + 60M
OL73	2.005433	52.518507	2° 00' 19.56" N	52° 31' 06.63" E	0.500	Art. 76(4)(a)(ii): FOS + 60M
OL74	2.010620	52.525042	2° 00' 38.23" N	52° 31' 30.15" E	0.500	Art. 76(4)(a)(ii): FOS + 60M
OL75	2.015858	52.531532	2° 00' 57.09" N	52° 31' 53.52" E	0.500	Art. 76(4)(a)(ii): FOS + 60M
OL76	2.021153	52.537982	2° 01' 16.15" N	52° 32' 16.74" E	0.500	Art. 76(4)(a)(ii): FOS + 60M
OL77	2.026502	52.544392	2° 01' 35.41" N	52° 32' 39.81" E	0.500	Art. 76(4)(a)(ii): FOS + 60M

ECS Point	Latitude	Longitude East	Lat, DMS	Long, DMS	Dist from previous (M)	Article 76 provision invoked
OL78	2.031903	52.550752	2° 01' 54.85" N	52° 33' 02.71" E	0.500	Art. 76(4)(a)(ii): FOS + 60M
OL79	2.037357	52.557067	2° 02' 14.49" N	52° 33' 25.44" E	0.500	Art. 76(4)(a)(ii): FOS + 60M
OL80	2.042864	52.563337	2° 02' 34.31" N	52° 33' 48.02" E	0.500	Art. 76(4)(a)(ii): FOS + 60M
OL81	2.048423	52.569563	2° 02' 54.32" N	52° 34' 10.43" E	0.500	Art. 76(4)(a)(ii): FOS + 60M
OL82	2.054035	52.575739	2° 03' 14.53" N	52° 34' 32.66" E	0.500	Art. 76(4)(a)(ii): FOS + 60M
OL83	2.059697	52.581870	2° 03' 34.91" N	52° 34' 54.73" E	0.500	Art. 76(4)(a)(ii): FOS + 60M
OL84	2.065412	52.587956	2° 03' 55.48" N	52° 35' 16.64" E	0.500	Art. 76(4)(a)(ii): FOS + 60M
OL85	2.071176	52.593992	2° 04' 16.24" N	52° 35' 38.37" E	0.500	Art. 76(4)(a)(ii): FOS + 60M
OL86	2.076993	52.599984	2° 04' 37.18" N	52° 35' 59.94" E	0.500	Art. 76(4)(a)(ii): FOS + 60M
OL87	2.082857	52.605922	2° 04' 58.29" N	52° 36' 21.32" E	0.500	Art. 76(4)(a)(ii): FOS + 60M
OL88	2.088772	52.611815	2° 05' 19.58" N	52° 36' 42.54" E	0.500	Art. 76(4)(a)(ii): FOS + 60M
OL89	2.094736	52.617658	2° 05' 41.05" N	52° 37' 03.57" E	0.500	Art. 76(4)(a)(ii): FOS + 60M
OL90	2.100750	52.623453	2° 06' 02.70" N	52° 37' 24.43" E	0.500	Art. 76(4)(a)(ii): FOS + 60M
OL91	2.106812	52.629197	2° 06' 24.53" N	52° 37' 45.11" E	0.500	Art. 76(4)(a)(ii): FOS + 60M
OL92	2.112920	52.634893	2° 06' 46.51" N	52° 38' 05.62" E	0.500	Art. 76(4)(a)(ii): FOS + 60M
OL93	2.119076	52.640534	2° 07' 08.68" N	52° 38' 25.92" E	0.500	Art. 76(4)(a)(ii): FOS + 60M
OL94	2.125280	52.646126	2° 07' 31.01" N	52° 38' 46.06" E	0.500	Art. 76(4)(a)(ii): FOS + 60M
OL95	2.131531	52.651664	2° 07' 53.51" N	52° 39' 05.99" E	0.500	Art. 76(4)(a)(ii): FOS + 60M
OL96	2.137828	52.657153	2° 08' 16.18" N	52° 39' 25.75" E	0.500	Art. 76(4)(a)(ii): FOS + 60M
OL97	2.144171	52.662588	2° 08' 39.02" N	52° 39' 45.32" E	0.500	Art. 76(4)(a)(ii): FOS + 60M
OL98	2.850090	53.373592	2° 51' 00.33" N	53° 22' 24.93" E	59.995	Art. 76(4)(a)(ii): FOS + 60M
OL99	2.850482	53.374062	2° 51' 01.74" N	53° 22' 26.63" E	0.037	Art. 76(4)(a)(ii): FOS + 60M
OL100	2.855872	53.380436	2° 51' 21.14" N	53° 22' 49.57" E	0.500	Art. 76(4)(a)(ii): FOS + 60M
OL101	2.861316	53.386760	2° 51' 40.74" N	53° 23' 12.34" E	0.500	Art. 76(4)(a)(ii): FOS + 60M
OL102	2.866813	53.393044	2° 52' 00.53" N	53° 23' 34.96" E	0.500	Art. 76(4)(a)(ii): FOS + 60M
OL103	2.872363	53.399283	2° 52' 20.51" N	53° 23' 57.42" E	0.500	Art. 76(4)(a)(ii): FOS + 60M
OL104	2.877964	53.405476	2° 52' 40.67" N	53° 24' 19.72" E	0.500	Art. 76(4)(a)(ii): FOS + 60M
OL105	2.883616	53.411621	2° 53' 01.02" N	53° 24' 41.84" E	0.500	Art. 76(4)(a)(ii): FOS + 60M
OL106	2.889322	53.417716	2° 53' 21.56" N	53° 25' 03.78" E	0.500	Art. 76(4)(a)(ii): FOS + 60M
OL107	2.895077	53.423771	2° 53' 42.28" N	53° 25' 25.58" E	0.500	Art. 76(4)(a)(ii): FOS + 60M
OL108	2.900882	53.429771	2° 54' 03.18" N	53° 25' 47.18" E	0.500	Art. 76(4)(a)(ii): FOS + 60M
OL109	2.906739	53.435727	2° 54' 24.26" N	53° 26' 08.62" E	0.500	Art. 76(4)(a)(ii): FOS + 60M
OL110	2.912645	53.441634	2° 54' 45.52" N	53° 26' 29.88" E	0.500	Art. 76(4)(a)(ii): FOS + 60M
OL111	2.918599	53.447491	2° 55' 06.96" N	53° 26' 50.97" E	0.500	Art. 76(4)(a)(ii): FOS + 60M
OL112	2.924604	53.453298	2° 55' 28.57" N	53° 27' 11.88" E	0.500	Art. 76(4)(a)(ii): FOS + 60M
OL113	2.930655	53.459052	2° 55' 50.36" N	53° 27' 32.59" E	0.500	Art. 76(4)(a)(ii): FOS + 60M
OL114	2.936754	53.464761	2° 56' 12.32" N	53° 27' 53.14" E	0.500	Art. 76(4)(a)(ii): FOS + 60M
OL115	2.942902	53.470416	2° 56' 34.45" N	53° 28' 13.50" E	0.500	Art. 76(4)(a)(ii): FOS + 60M
OL116	2.949097	53.476021	2° 56' 56.75" N	53° 28' 33.68" E	0.500	Art. 76(4)(a)(ii): FOS + 60M
OL117	2.955337	53.481577	2° 57' 19.22" N	53° 28' 53.68" E	0.500	Art. 76(4)(a)(ii): FOS + 60M
OL118	2.961625	53.487075	2° 57' 41.85" N	53° 29' 13.47" E	0.500	Art. 76(4)(a)(ii): FOS + 60M

ECS Point	Latitude	Longitude East	Lat, DMS	Long, DMS	Dist from previous (M)	Article 76 provision invoked
OL119	2.967958	53.492528	2° 58' 04.65" N	53° 29' 33.10" E	0.500	Art. 76(4)(a)(ii): FOS + 60M
OL120	2.974336	53.497922	2° 58' 27.61" N	53° 29' 52.52" E	0.500	Art. 76(4)(a)(ii): FOS + 60M
OL121	2.980760	53.503267	2° 58' 50.74" N	53° 30' 11.76" E	0.500	Art. 76(4)(a)(ii): FOS + 60M
OL122	2.987228	53.508558	2° 59' 14.02" N	53° 30' 30.81" E	0.500	Art. 76(4)(a)(ii): FOS + 60M
OL123	2.993739	53.513795	2° 59' 37.46" N	53° 30' 49.66" E	0.500	Art. 76(4)(a)(ii): FOS + 60M
OL124	3.000295	53.518974	3° 00' 01.06" N	53° 31' 08.31" E	0.500	Art. 76(4)(a)(ii): FOS + 60M
OL125	3.006895	53.524103	3° 00' 24.82" N	53° 31' 26.77" E	0.500	Art. 76(4)(a)(ii): FOS + 60M
OL126	3.013537	53.529179	3° 00' 48.74" N	53° 31' 45.05" E	0.500	Art. 76(4)(a)(ii): FOS + 60M
OL127	3.020221	53.534196	3° 01' 12.80" N	53° 32' 03.11" E	0.500	Art. 76(4)(a)(ii): FOS + 60M
OL128	3.026947	53.539159	3° 01' 37.01" N	53° 32' 20.98" E	0.500	Art. 76(4)(a)(ii): FOS + 60M
OL129	3.033713	53.544064	3° 02' 01.37" N	53° 32' 38.63" E	0.500	Art. 76(4)(a)(ii): FOS + 60M
OL130	3.040521	53.548919	3° 02' 25.88" N	53° 32' 56.11" E	0.500	Art. 76(4)(a)(ii): FOS + 60M
OL131	3.047368	53.553712	3° 02' 50.53" N	53° 33' 13.36" E	0.500	Art. 76(4)(a)(ii): FOS + 60M
OL132	3.054257	53.558446	3° 03' 15.33" N	53° 33' 30.41" E	0.500	Art. 76(4)(a)(ii): FOS + 60M
OL133	3.061185	53.563131	3° 03' 40.27" N	53° 33' 47.27" E	0.500	Art. 76(4)(a)(ii): FOS + 60M
OL134	3.068153	53.567753	3° 04' 05.35" N	53° 34' 03.91" E	0.500	Art. 76(4)(a)(ii): FOS + 60M
OL135	3.075159	53.572316	3° 04' 30.57" N	53° 34' 20.34" E	0.500	Art. 76(4)(a)(ii): FOS + 60M
OL136	3.082202	53.576826	3° 04' 55.93" N	53° 34' 36.57" E	0.500	Art. 76(4)(a)(ii): FOS + 60M
OL137	3.089282	53.581272	3° 05' 21.42" N	53° 34' 52.58" E	0.500	Art. 76(4)(a)(ii): FOS + 60M
OL138	3.096400	53.585661	3° 05' 47.04" N	53° 35' 08.38" E	0.500	Art. 76(4)(a)(ii): FOS + 60M
OL139	3.103553	53.589990	3° 06' 12.79" N	53° 35' 23.97" E	0.500	Art. 76(4)(a)(ii): FOS + 60M
OL140	3.110743	53.594262	3° 06' 38.67" N	53° 35' 39.34" E	0.500	Art. 76(4)(a)(ii): FOS + 60M
OL141	3.949130	54.144958	3° 56' 56.87" N	54° 08' 41.85" E	59.978	Art. 76(4)(a)(ii): FOS + 60M
OL142	4.227286	54.433037	4° 13' 38.23" N	54° 25' 58.93" E	23.962	Art. 76(4)(a)(ii): FOS + 60M
OL143	4.233126	54.439011	4° 13' 59.26" N	54° 26' 20.44" E	0.500	Art. 76(4)(a)(ii): FOS + 60M
OL144	4.239015	54.444940	4° 14' 20.46" N	54° 26' 41.78" E	0.500	Art. 76(4)(a)(ii): FOS + 60M
OL145	4.244954	54.450819	4° 14' 41.84" N	54° 27' 02.95" E	0.500	Art. 76(4)(a)(ii): FOS + 60M
OL146	4.250941	54.456649	4° 15' 03.39" N	54° 27' 23.94" E	0.500	Art. 76(4)(a)(ii): FOS + 60M
OL147	4.256977	54.462430	4° 15' 25.12" N	54° 27' 44.75" E	0.500	Art. 76(4)(a)(ii): FOS + 60M
OL148	4.263061	54.468161	4° 15' 47.02" N	54° 28' 05.38" E	0.500	Art. 76(4)(a)(ii): FOS + 60M
OL149	4.269194	54.473843	4° 16' 09.10" N	54° 28' 25.84" E	0.500	Art. 76(4)(a)(ii): FOS + 60M
OL150	4.275373	54.479471	4° 16' 31.34" N	54° 28' 46.10" E	0.500	Art. 76(4)(a)(ii): FOS + 60M
OL151	4.281598	54.485049	4° 16' 53.76" N	54° 29' 06.18" E	0.500	Art. 76(4)(a)(ii): FOS + 60M
OL152	4.287872	54.490574	4° 17' 16.34" N	54° 29' 26.07" E	0.500	Art. 76(4)(a)(ii): FOS + 60M
OL153	4.294192	54.496049	4° 17' 39.09" N	54° 29' 45.78" E	0.500	Art. 76(4)(a)(ii): FOS + 60M
OL154	4.300556	54.501471	4° 18' 02.00" N	54° 30' 05.30" E	0.500	Art. 76(4)(a)(ii): FOS + 60M
OL155	4.306964	54.506838	4° 18' 25.07" N	54° 30' 24.62" E	0.500	Art. 76(4)(a)(ii): FOS + 60M
OL156	4.313419	54.512156	4° 18' 48.31" N	54° 30' 43.76" E	0.500	Art. 76(4)(a)(ii): FOS + 60M
OL157	4.319918	54.517416	4° 19' 11.71" N	54° 31' 02.70" E	0.500	Art. 76(4)(a)(ii): FOS + 60M
OL158	4.326461	54.522626	4° 19' 35.26" N	54° 31' 21.45" E	0.500	Art. 76(4)(a)(ii): FOS + 60M
OL159	4.333046	54.527778	4° 19' 58.97" N	54° 31' 40.00" E	0.500	Art. 76(4)(a)(ii): FOS + 60M

ECS Point	Latitude	Longitude East	Lat, DMS	Long, DMS	Dist from previous (M)	Article 76 provision invoked
OL160	4.339674	54.532876	4° 20' 22.83" N	54° 31' 58.35" E	0.500	Art. 76(4)(a)(ii): FOS + 60M
OL161	4.346344	54.537920	4° 20' 46.84" N	54° 32' 16.51" E	0.500	Art. 76(4)(a)(ii): FOS + 60M
OL162	4.353057	54.542910	4° 21' 11.01" N	54° 32' 34.48" E	0.500	Art. 76(4)(a)(ii): FOS + 60M
OL163	4.359812	54.547842	4° 21' 35.32" N	54° 32' 52.23" E	0.500	Art. 76(4)(a)(ii): FOS + 60M
OL164	4.366607	54.552715	4° 21' 59.79" N	54° 33' 09.78" E	0.500	Art. 76(4)(a)(ii): FOS + 60M
OL165	4.373442	54.557534	4° 22' 24.39" N	54° 33' 27.13" E	0.500	Art. 76(4)(a)(ii): FOS + 60M
OL166	4.380319	54.562300	4° 22' 49.15" N	54° 33' 44.28" E	0.500	Art. 76(4)(a)(ii): FOS + 60M
OL167	4.387235	54.567003	4° 23' 14.05" N	54° 34' 01.21" E	0.500	Art. 76(4)(a)(ii): FOS + 60M
OL168	4.394189	54.571651	4° 23' 39.08" N	54° 34' 17.95" E	0.500	Art. 76(4)(a)(ii): FOS + 60M
OL169	4.401181	54.576242	4° 24' 04.25" N	54° 34' 34.47" E	0.500	Art. 76(4)(a)(ii): FOS + 60M
OL170	4.408210	54.580774	4° 24' 29.56" N	54° 34' 50.79" E	0.500	Art. 76(4)(a)(ii): FOS + 60M
OL171	4.415279	54.585247	4° 24' 55.00" N	54° 35' 06.89" E	0.500	Art. 76(4)(a)(ii): FOS + 60M
OL172	4.422384	54.589663	4° 25' 20.58" N	54° 35' 22.79" E	0.500	Art. 76(4)(a)(ii): FOS + 60M
OL173	4.429526	54.594015	4° 25' 46.29" N	54° 35' 38.46" E	0.500	Art. 76(4)(a)(ii): FOS + 60M
OL174	4.436705	54.598313	4° 26' 12.14" N	54° 35' 53.93" E	0.500	Art. 76(4)(a)(ii): FOS + 60M
OL175	4.443919	54.602549	4° 26' 38.11" N	54° 36' 09.18" E	0.500	Art. 76(4)(a)(ii): FOS + 60M
OL176	4.451167	54.606726	4° 27' 04.20" N	54° 36' 24.22" E	0.500	Art. 76(4)(a)(ii): FOS + 60M
OL177	4.458451	54.610845	4° 27' 30.43" N	54° 36' 39.04" E	0.500	Art. 76(4)(a)(ii): FOS + 60M
OL178	4.465769	54.614901	4° 27' 56.77" N	54° 36' 53.64" E	0.500	Art. 76(4)(a)(ii): FOS + 60M
OL179	4.473120	54.618894	4° 28' 23.23" N	54° 37' 08.02" E	0.500	Art. 76(4)(a)(ii): FOS + 60M
OL180	4.480505	54.622828	4° 28' 49.82" N	54° 37' 22.18" E	0.500	Art. 76(4)(a)(ii): FOS + 60M
OL181	4.487923	54.626700	4° 29' 16.52" N	54° 37' 36.12" E	0.500	Art. 76(4)(a)(ii): FOS + 60M
OL182	4.495372	54.630513	4° 29' 43.34" N	54° 37' 49.85" E	0.500	Art. 76(4)(a)(ii): FOS + 60M
OL183	5.165201	54.970539	5° 09' 54.72" N	54° 58' 13.94" E	44.882	Art. 76(4)(a)(ii): FOS + 60M
OL184	5.172677	54.974303	5° 10' 21.64" N	54° 58' 27.49" E	0.500	Art. 76(4)(a)(ii): FOS + 60M
OL185	5.180183	54.978000	5° 10' 48.66" N	54° 58' 40.80" E	0.500	Art. 76(4)(a)(ii): FOS + 60M
OL186	5.187722	54.981642	5° 11' 15.80" N	54° 58' 53.91" E	0.500	Art. 76(4)(a)(ii): FOS + 60M
OL187	5.195289	54.985218	5° 11' 43.04" N	54° 59' 06.79" E	0.500	Art. 76(4)(a)(ii): FOS + 60M
OL188	5.202887	54.988730	5° 12' 10.39" N	54° 59' 19.43" E	0.500	Art. 76(4)(a)(ii): FOS + 60M
OL189	5.210514	54.992180	5° 12' 37.85" N	54° 59' 31.85" E	0.500	Art. 76(4)(a)(ii): FOS + 60M
OL190	5.218168	54.995566	5° 13' 05.41" N	54° 59' 44.04" E	0.500	Art. 76(4)(a)(ii): FOS + 60M
OL191	5.225851	54.998886	5° 13' 33.06" N	54° 59' 55.99" E	0.500	Art. 76(4)(a)(ii): FOS + 60M
OL192	5.233561	55.002147	5° 14' 00.82" N	55° 00' 07.73" E	0.500	Art. 76(4)(a)(ii): FOS + 60M
OL193	5.241299	55.005340	5° 14' 28.68" N	55° 00' 19.23" E	0.500	Art. 76(4)(a)(ii): FOS + 60M
OL194	5.249063	55.008471	5° 14' 56.63" N	55° 00' 30.50" E	0.500	Art. 76(4)(a)(ii): FOS + 60M
OL195	5.256852	55.011534	5° 15' 24.67" N	55° 00' 41.52" E	0.500	Art. 76(4)(a)(ii): FOS + 60M
OL196	5.264667	55.014534	5° 15' 52.80" N	55° 00' 52.33" E	0.500	Art. 76(4)(a)(ii): FOS + 60M
OL197	5.272507	55.017472	5° 16' 21.03" N	55° 01' 02.90" E	0.500	Art. 76(4)(a)(ii): FOS + 60M
OL198	5.280371	55.020342	5° 16' 49.34" N	55° 01' 13.23" E	0.500	Art. 76(4)(a)(ii): FOS + 60M
OL199	5.288258	55.023149	5° 17' 17.73" N	55° 01' 23.34" E	0.500	Art. 76(4)(a)(ii): FOS + 60M
OL200	5.296169	55.025889	5° 17' 46.21" N	55° 01' 33.20" E	0.500	Art. 76(4)(a)(ii): FOS + 60M

ECS Point	Latitude	Longitude East	Lat, DMS	Long, DMS	Dist from previous (M)	Article 76 provision invoked
OL201	5.304102	55.028561	5° 18' 14.77" N	55° 01' 42.82" E	0.500	Art. 76(4)(a)(ii): FOS + 60M
OL202	5.312057	55.031167	5° 18' 43.41" N	55° 01' 52.20" E	0.500	Art. 76(4)(a)(ii): FOS + 60M
OL203	5.320033	55.033709	5° 19' 12.12" N	55° 02' 01.35" E	0.500	Art. 76(4)(a)(ii): FOS + 60M
OL204	5.328031	55.036184	5° 19' 40.91" N	55° 02' 10.26" E	0.500	Art. 76(4)(a)(ii): FOS + 60M
OL205	5.336049	55.038596	5° 20' 09.78" N	55° 02' 18.95" E	0.500	Art. 76(4)(a)(ii): FOS + 60M
OL206	5.344087	55.040936	5° 20' 38.71" N	55° 02' 27.37" E	0.500	Art. 76(4)(a)(ii): FOS + 60M
OL207	5.352145	55.043213	5° 21' 07.72" N	55° 02' 35.57" E	0.500	Art. 76(4)(a)(ii): FOS + 60M
OL208	5.360220	55.045418	5° 21' 36.79" N	55° 02' 43.51" E	0.500	Art. 76(4)(a)(ii): FOS + 60M
OL209	5.368314	55.047561	5° 22' 05.93" N	55° 02' 51.22" E	0.500	Art. 76(4)(a)(ii): FOS + 60M
OL210	5.376426	55.049636	5° 22' 35.13" N	55° 02' 58.69" E	0.500	Art. 76(4)(a)(ii): FOS + 60M
OL211	5.384555	55.051639	5° 23' 04.40" N	55° 03' 05.90" E	0.500	Art. 76(4)(a)(ii): FOS + 60M
OL212	5.392700	55.053580	5° 23' 33.72" N	55° 03' 12.89" E	0.500	Art. 76(4)(a)(ii): FOS + 60M
OL213	5.400861	55.055453	5° 24' 03.10" N	55° 03' 19.63" E	0.500	Art. 76(4)(a)(ii): FOS + 60M
OL214	5.409037	55.057254	5° 24' 32.53" N	55° 03' 26.12" E	0.500	Art. 76(4)(a)(ii): FOS + 60M
OL215	5.417228	55.058987	5° 25' 02.02" N	55° 03' 32.36" E	0.500	Art. 76(4)(a)(ii): FOS + 60M
OL216	6.164314	55.729914	6° 09' 51.53" N	55° 43' 47.69" E	59.999	Art. 76(4)(a)(ii): FOS + 60M
OL217	6.166506	55.736955	6° 09' 59.42" N	55° 44' 13.04" E	0.441	Art. 76(4)(a)(ii): FOS + 60M
OL218	6.166933	55.738288	6° 10' 00.96" N	55° 44' 17.84" E	0.084	Art. 76(4)(a)(ii): FOS + 60M
OL219	6.168420	55.739157	6° 10' 06.31" N	55° 44' 20.97" E	0.103	Art. 76(5): 350 M line
OL220	6.182899	55.747565	6° 10' 58.44" N	55° 44' 51.24" E	1.000	Art. 76(5): 350 M line
OL221	6.197402	55.755933	6° 11' 50.65" N	55° 45' 21.36" E	1.000	Art. 76(5): 350 M line
OL222	6.211928	55.764259	6° 12' 42.94" N	55° 45' 51.33" E	1.000	Art. 76(5): 350 M line
OL223	6.226479	55.772545	6° 13' 35.32" N	55° 46' 21.16" E	1.000	Art. 76(5): 350 M line
OL224	6.241052	55.780790	6° 14' 27.79" N	55° 46' 50.85" E	1.000	Art. 76(5): 350 M line
OL225	6.255649	55.788994	6° 15' 20.34" N	55° 47' 20.38" E	1.000	Art. 76(5): 350 M line
OL226	6.270269	55.797156	6° 16' 12.97" N	55° 47' 49.76" E	1.000	Art. 76(5): 350 M line
OL227	6.465000	55.907199	6° 27' 54.00" N	55° 54' 25.92" E	13.358	Art. 76(5): 350 M line
OL228	6.479460	55.915645	6° 28' 46.06" N	55° 54' 56.32" E	1.000	Art. 76(5): 350 M line
OL229	7.330867	56.418517	7° 19' 51.12" N	56° 25' 06.66" E	59.036	Art. 76(5): 350 M line
OL230	7.332618	56.419595	7° 19' 57.42" N	56° 25' 10.54" E	0.123	Art. 76(5): 350 M line
OL231	7.346906	56.428342	7° 20' 48.86" N	56° 25' 42.03" E	1.000	Art. 76(5): 350 M line
OL232	7.361220	56.437049	7° 21' 40.39" N	56° 26' 13.38" E	1.000	Art. 76(5): 350 M line
OL233	7.375557	56.445716	7° 22' 32.01" N	56° 26' 44.58" E	1.000	Art. 76(5): 350 M line
OL234	7.389920	56.454342	7° 23' 23.71" N	56° 27' 15.63" E	1.000	Art. 76(5): 350 M line
OL235	7.404306	56.462928	7° 24' 15.50" N	56° 27' 46.54" E	1.000	Art. 76(5): 350 M line
OL236	7.418717	56.471473	7° 25' 07.38" N	56° 28' 17.31" E	1.000	Art. 76(5): 350 M line
OL237	7.433152	56.479978	7° 25' 59.35" N	56° 28' 47.92" E	1.000	Art. 76(5): 350 M line
OL238	7.447611	56.488442	7° 26' 51.40" N	56° 29' 18.39" E	1.000	Art. 76(5): 350 M line
OL239	7.462093	56.496866	7° 27' 43.54" N	56° 29' 48.72" E	1.000	Art. 76(5): 350 M line
OL240	7.476599	56.505248	7° 28' 35.76" N	56° 30' 18.90" E	1.000	Art. 76(5): 350 M line
OL241	7.491129	56.513590	7° 29' 28.07" N	56° 30' 48.93" E	1.000	Art. 76(5): 350 M line

ECS Point	Latitude	Longitude East	Lat, DMS	Long, DMS	Dist from previous (M)	Article 76 provision invoked
OL242	7.505683	56.521891	7° 30' 20.46" N	56° 31' 18.81" E	1.000	Art. 76(5): 350 M line
OL243	7.520259	56.530151	7° 31' 12.94" N	56° 31' 48.54" E	1.000	Art. 76(5): 350 M line
OL244	7.527774	56.534388	7° 31' 39.99" N	56° 32' 03.80" E	0.515	Art. 76(5): 350 M line
OL245	7.536305	56.539296	7° 32' 10.70" N	56° 32' 21.47" E	0.587	Art. 76(5): 350 M line
OL246	7.550846	56.547618	7° 33' 03.05" N	56° 32' 51.43" E	1.000	Art. 76(5): 350 M line
OL247	7.565411	56.555900	7° 33' 55.48" N	56° 33' 21.24" E	1.000	Art. 76(5): 350 M line
OL248	7.579999	56.564140	7° 34' 48.00" N	56° 33' 50.91" E	1.000	Art. 76(5): 350 M line
OL249	7.594611	56.572340	7° 35' 40.60" N	56° 34' 20.43" E	1.000	Art. 76(5): 350 M line
OL250	7.609245	56.580498	7° 36' 33.28" N	56° 34' 49.80" E	1.000	Art. 76(5): 350 M line
OL251	7.623903	56.588615	7° 37' 26.05" N	56° 35' 19.02" E	1.000	Art. 76(5): 350 M line
OL252	7.638583	56.596691	7° 38' 18.90" N	56° 35' 48.09" E	1.000	Art. 76(5): 350 M line
OL253	7.653286	56.604725	7° 39' 11.83" N	56° 36' 17.01" E	1.000	Art. 76(5): 350 M line
OL254	7.668011	56.612718	7° 40' 04.84" N	56° 36' 45.79" E	1.000	Art. 76(5): 350 M line
OL255	7.682759	56.620669	7° 40' 57.94" N	56° 37' 14.41" E	1.000	Art. 76(5): 350 M line
OL256	7.697530	56.628579	7° 41' 51.11" N	56° 37' 42.89" E	1.000	Art. 76(5): 350 M line
OL257	7.712322	56.636447	7° 42' 44.36" N	56° 38' 11.21" E	1.000	Art. 76(5): 350 M line
OL258	7.727137	56.644274	7° 43' 37.70" N	56° 38' 39.39" E	1.000	Art. 76(5): 350 M line
OL259	7.741974	56.652059	7° 44' 31.11" N	56° 39' 07.41" E	1.000	Art. 76(5): 350 M line
OL260	7.756833	56.659801	7° 45' 24.60" N	56° 39' 35.29" E	1.000	Art. 76(5): 350 M line
OL261	7.771713	56.667502	7° 46' 18.17" N	56° 40' 03.01" E	1.000	Art. 76(5): 350 M line
OL262	7.786615	56.675161	7° 47' 11.82" N	56° 40' 30.58" E	1.000	Art. 76(5): 350 M line
OL263	7.801539	56.682778	7° 48' 05.54" N	56° 40' 58.00" E	1.000	Art. 76(5): 350 M line
OL264	7.816484	56.690353	7° 48' 59.34" N	56° 41' 25.27" E	1.000	Art. 76(5): 350 M line
OL265	7.831451	56.697886	7° 49' 53.22" N	56° 41' 52.39" E	1.000	Art. 76(5): 350 M line
OL266	7.846438	56.705376	7° 50' 47.18" N	56° 42' 19.36" E	1.000	Art. 76(5): 350 M line
OL267	7.861447	56.712824	7° 51' 41.21" N	56° 42' 46.17" E	1.000	Art. 76(5): 350 M line
OL268	7.876476	56.720230	7° 52' 35.32" N	56° 43' 12.83" E	1.000	Art. 76(5): 350 M line
OL269	7.891527	56.727593	7° 53' 29.50" N	56° 43' 39.34" E	1.000	Art. 76(5): 350 M line
OL270	7.906598	56.734914	7° 54' 23.75" N	56° 44' 05.69" E	1.000	Art. 76(5): 350 M line
OL271	7.921690	56.742193	7° 55' 18.08" N	56° 44' 31.90" E	1.000	Art. 76(5): 350 M line
OL272	7.936802	56.749428	7° 56' 12.49" N	56° 44' 57.94" E	1.000	Art. 76(5): 350 M line
OL273	7.951934	56.756622	7° 57' 06.97" N	56° 45' 23.84" E	1.000	Art. 76(5): 350 M line
OL274	7.967087	56.763772	7° 58' 01.52" N	56° 45' 49.58" E	1.000	Art. 76(5): 350 M line
OL275	7.982260	56.770880	7° 58' 56.14" N	56° 46' 15.17" E	1.000	Art. 76(5): 350 M line
OL276	7.997453	56.777944	7° 59' 50.83" N	56° 46' 40.60" E	1.000	Art. 76(5): 350 M line
OL277	8.782287	57.407624	8° 46' 56.23" N	57° 24' 27.45" E	59.991	Art. 76(5): 100 M line
OL278	8.788124	57.414993	8° 47' 17.25" N	57° 24' 53.98" E	0.560	Art. 76(5): 100 M line
OL279	8.798686	57.428056	8° 47' 55.27" N	57° 25' 41.00" E	1.000	Art. 76(5): 100 M line
OL280	8.809376	57.441012	8° 48' 33.76" N	57° 26' 27.65" E	1.000	Art. 76(5): 100 M line
OL281	8.820195	57.453862	8° 49' 12.70" N	57° 27' 13.90" E	1.000	Art. 76(5): 100 M line
OL282	8.831140	57.466602	8° 49' 52.10" N	57° 27' 59.77" E	1.000	Art. 76(5): 100 M line

ECS Point	Latitude	Longitude East	Lat, DMS	Long, DMS	Dist from previous (M)	Article 76 provision invoked
OL283	8.842211	57.479233	8° 50' 31.96" N	57° 28' 45.24" E	1.000	Art. 76(5): 100 M line
OL284	8.853406	57.491753	8° 51' 12.26" N	57° 29' 30.31" E	1.000	Art. 76(5): 100 M line
OL285	8.864725	57.504160	8° 51' 53.01" N	57° 30' 14.98" E	1.000	Art. 76(5): 100 M line
OL286	8.876166	57.516454	8° 52' 34.20" N	57° 30' 59.24" E	1.000	Art. 76(5): 100 M line
OL287	8.887729	57.528633	8° 53' 15.83" N	57° 31' 43.08" E	1.000	Art. 76(5): 100 M line
OL288	8.899411	57.540696	8° 53' 57.88" N	57° 32' 26.51" E	1.000	Art. 76(5): 100 M line
OL289	8.911213	57.552641	8° 54' 40.37" N	57° 33' 09.51" E	1.000	Art. 76(5): 100 M line
OL290	8.923132	57.564468	8° 55' 23.28" N	57° 33' 52.09" E	1.000	Art. 76(5): 100 M line
OL291	8.935168	57.576175	8° 56' 06.61" N	57° 34' 34.23" E	1.000	Art. 76(5): 100 M line
OL292	8.947320	57.587762	8° 56' 50.35" N	57° 35' 15.94" E	1.000	Art. 76(5): 100 M line
OL293	8.959585	57.599226	8° 57' 34.51" N	57° 35' 57.22" E	1.000	Art. 76(5): 100 M line
OL294	8.968770	57.607641	8° 58' 07.57" N	57° 36' 27.51" E	0.742	Art. 76(4)(a)(ii): FOS + 60M
OL295	9.916397	57.943567	9° 54' 59.03" N	57° 56' 36.84" E	59.997	Art. 76(4)(a)(ii): FOS + 60M
OL296	9.922985	57.947323	9° 55' 22.75" N	57° 56' 50.36" E	0.452	Art. 76(4)(a)(ii): FOS + 60M
OL297	9.930309	57.951414	9° 55' 49.11" N	57° 57' 05.09" E	0.500	Art. 76(4)(a)(ii): FOS + 60M
OL298	9.937665	57.955443	9° 56' 15.60" N	57° 57' 19.60" E	0.500	Art. 76(4)(a)(ii): FOS + 60M
OL299	9.945055	57.959414	9° 56' 42.20" N	57° 57' 33.89" E	0.500	Art. 76(4)(a)(ii): FOS + 60M
OL300	9.952477	57.963322	9° 57' 08.92" N	57° 57' 47.96" E	0.500	Art. 76(4)(a)(ii): FOS + 60M
OL301	9.959931	57.967166	9° 57' 35.75" N	57° 58' 01.80" E	0.500	Art. 76(4)(a)(ii): FOS + 60M
OL302	9.967416	57.970948	9° 58' 02.70" N	57° 58' 15.42" E	0.500	Art. 76(4)(a)(ii): FOS + 60M
OL303	9.974931	57.974663	9° 58' 29.75" N	57° 58' 28.79" E	0.500	Art. 76(4)(a)(ii): FOS + 60M
OL304	9.982478	57.978319	9° 58' 56.92" N	57° 58' 41.95" E	0.500	Art. 76(4)(a)(ii): FOS + 60M
OL305	9.990055	57.981912	9° 59' 24.20" N	57° 58' 54.89" E	0.500	Art. 76(4)(a)(ii): FOS + 60M
OL306	9.997662	57.985443	9° 59' 51.59" N	57° 59' 07.60" E	0.500	Art. 76(4)(a)(ii): FOS + 60M
OL307	10.005297	57.988906	10° 00' 19.07" N	57° 59' 20.06" E	0.500	Art. 76(4)(a)(ii): FOS + 60M
OL308	10.012961	57.992306	10° 00' 46.66" N	57° 59' 32.30" E	0.500	Art. 76(4)(a)(ii): FOS + 60M
OL309	10.020653	57.995643	10° 01' 14.35" N	57° 59' 44.32" E	0.500	Art. 76(4)(a)(ii): FOS + 60M
OL310	10.028370	57.998913	10° 01' 42.14" N	57° 59' 56.09" E	0.500	Art. 76(4)(a)(ii): FOS + 60M
OL311	10.036117	58.002120	10° 02' 10.02" N	58° 00' 07.63" E	0.500	Art. 76(4)(a)(ii): FOS + 60M
OL312	10.043888	58.005264	10° 02' 38.00" N	58° 00' 18.95" E	0.500	Art. 76(4)(a)(ii): FOS + 60M
OL313	10.051685	58.008341	10° 03' 06.07" N	58° 00' 30.03" E	0.500	Art. 76(4)(a)(ii): FOS + 60M
OL314	10.059506	58.011350	10° 03' 34.22" N	58° 00' 40.86" E	0.500	Art. 76(4)(a)(ii): FOS + 60M
OL315	10.067353	58.014296	10° 04' 02.47" N	58° 00' 51.47" E	0.500	Art. 76(4)(a)(ii): FOS + 60M
OL316	10.075223	58.017176	10° 04' 30.80" N	58° 01' 01.83" E	0.500	Art. 76(4)(a)(ii): FOS + 60M
OL317	10.083117	58.019987	10° 04' 59.22" N	58° 01' 11.96" E	0.500	Art. 76(4)(a)(ii): FOS + 60M
OL318	10.091033	58.022736	10° 05' 27.72" N	58° 01' 21.85" E	0.500	Art. 76(4)(a)(ii): FOS + 60M
OL319	10.098972	58.025413	10° 05' 56.30" N	58° 01' 31.49" E	0.500	Art. 76(4)(a)(ii): FOS + 60M
OL320	10.106935	58.028027	10° 06' 24.97" N	58° 01' 40.90" E	0.500	Art. 76(4)(a)(ii): FOS + 60M
OL321	10.114917	58.030574	10° 06' 53.70" N	58° 01' 50.07" E	0.500	Art. 76(4)(a)(ii): FOS + 60M
OL322	10.122921	58.033053	10° 07' 22.52" N	58° 01' 58.99" E	0.500	Art. 76(4)(a)(ii): FOS + 60M
OL323	10.130945	58.035465	10° 07' 51.40" N	58° 02' 07.68" E	0.500	Art. 76(4)(a)(ii): FOS + 60M

ECS Point	Latitude	Longitude East	Lat, DMS	Long, DMS	Dist from previous (M)	Article 76 provision invoked
OL324	10.138987	58.037810	10° 08' 20.35" N	58° 02' 16.12" E	0.500	Art. 76(4)(a)(ii): FOS + 60M
OL325	10.147050	58.040092	10° 08' 49.38" N	58° 02' 24.33" E	0.500	Art. 76(4)(a)(ii): FOS + 60M
OL326	10.155131	58.042297	10° 09' 18.47" N	58° 02' 32.27" E	0.500	Art. 76(4)(a)(ii): FOS + 60M
OL327	10.162351	58.044207	10° 09' 44.46" N	58° 02' 39.15" E	0.446	Art. 76(4)(a)(ii): FOS + 60M
OL328	10.170344	58.043886	10° 10' 13.24" N	58° 02' 37.99" E	0.478	Art. 76(5): 100 M line
OL329	10.187067	58.043047	10° 11' 13.44" N	58° 02' 34.97" E	1.000	Art. 76(5): 100 M line
OL330	10.203781	58.042038	10° 12' 13.61" N	58° 02' 31.34" E	1.000	Art. 76(5): 100 M line
OL331	10.220484	58.040861	10° 13' 13.74" N	58° 02' 27.10" E	1.000	Art. 76(5): 100 M line
OL332	10.237174	58.039515	10° 14' 13.83" N	58° 02' 22.26" E	1.000	Art. 76(5): 100 M line
OL333	10.253851	58.038001	10° 15' 13.86" N	58° 02' 16.81" E	1.000	Art. 76(5): 100 M line
OL334	10.270511	58.036318	10° 16' 13.84" N	58° 02' 10.75" E	1.000	Art. 76(5): 100 M line
OL335	10.287154	58.034467	10° 17' 13.76" N	58° 02' 04.08" E	1.000	Art. 76(5): 100 M line
OL336	10.303778	58.032448	10° 18' 13.60" N	58° 01' 56.81" E	1.000	Art. 76(5): 100 M line
OL337	10.320381	58.030261	10° 19' 13.37" N	58° 01' 48.94" E	1.000	Art. 76(5): 100 M line
OL338	10.336961	58.027906	10° 20' 13.06" N	58° 01' 40.46" E	1.000	Art. 76(5): 100 M line
OL339	10.353517	58.025384	10° 21' 12.66" N	58° 01' 31.38" E	1.000	Art. 76(5): 100 M line
OL340	10.370047	58.022694	10° 22' 12.17" N	58° 01' 21.70" E	1.000	Art. 76(5): 100 M line
OL341	10.386550	58.019837	10° 23' 11.58" N	58° 01' 11.42" E	1.000	Art. 76(5): 100 M line
OL342	10.403024	58.016814	10° 24' 10.89" N	58° 01' 00.53" E	1.000	Art. 76(5): 100 M line
OL343	10.419467	58.013624	10° 25' 10.08" N	58° 00' 49.05" E	1.000	Art. 76(5): 100 M line
OL344	10.435877	58.010268	10° 26' 09.16" N	58° 00' 36.96" E	1.000	Art. 76(5): 100 M line
OL345	10.452254	58.006745	10° 27' 08.12" N	58° 00' 24.28" E	1.000	Art. 76(5): 100 M line
OL346	10.468594	58.003057	10° 28' 06.94" N	58° 00' 11.01" E	1.000	Art. 76(5): 100 M line
OL347	10.484898	57.999204	10° 29' 05.63" N	57° 59' 57.14" E	1.000	Art. 76(5): 100 M line
OL348	10.501162	57.995186	10° 30' 04.19" N	57° 59' 42.67" E	1.000	Art. 76(5): 100 M line
OL349	10.517386	57.991004	10° 31' 02.59" N	57° 59' 27.62" E	1.000	Art. 76(5): 100 M line
OL350	10.533567	57.986657	10° 32' 00.84" N	57° 59' 11.97" E	1.000	Art. 76(5): 100 M line
OL351	10.549705	57.982147	10° 32' 58.94" N	57° 58' 55.73" E	1.000	Art. 76(5): 100 M line
OL352	10.565796	57.977473	10° 33' 56.87" N	57° 58' 38.91" E	1.000	Art. 76(5): 100 M line
OL353	10.581841	57.972637	10° 34' 54.63" N	57° 58' 21.49" E	1.000	Art. 76(5): 100 M line
OL354	10.597837	57.967638	10° 35' 52.22" N	57° 58' 03.50" E	1.000	Art. 76(5): 100 M line
OL355	10.613783	57.962477	10° 36' 49.62" N	57° 57' 44.92" E	1.000	Art. 76(5): 100 M line
OL356	10.629677	57.957155	10° 37' 46.84" N	57° 57' 25.76" E	1.000	Art. 76(5): 100 M line
OL357	10.645517	57.951672	10° 38' 43.86" N	57° 57' 06.02" E	1.000	Art. 76(5): 100 M line
OL358	10.661303	57.946028	10° 39' 40.69" N	57° 56' 45.70" E	1.000	Art. 76(5): 100 M line
OL359	10.677031	57.940225	10° 40' 37.31" N	57° 56' 24.81" E	1.000	Art. 76(5): 100 M line
OL360	10.692701	57.934262	10° 41' 33.73" N	57° 56' 03.35" E	1.000	Art. 76(5): 100 M line
OL361	10.708311	57.928141	10° 42' 29.92" N	57° 55' 41.31" E	1.000	Art. 76(5): 100 M line
OL362	10.723860	57.921861	10° 43' 25.90" N	57° 55' 18.70" E	1.000	Art. 76(5): 100 M line
OL363	10.739346	57.915424	10° 44' 21.65" N	57° 54' 55.53" E	1.000	Art. 76(5): 100 M line
OL364	10.754767	57.908830	10° 45' 17.16" N	57° 54' 31.79" E	1.000	Art. 76(5): 100 M line

ECS Point	Latitude	Longitude East	Lat, DMS	Long, DMS	Dist from previous (M)	Article 76 provision invoked
OL365	10.770122	57.902080	10° 46' 12.44" N	57° 54' 07.49" E	1.000	Art. 76(5): 100 M line
OL366	10.785410	57.895174	10° 47' 07.48" N	57° 53' 42.63" E	1.000	Art. 76(5): 100 M line
OL367	10.800628	57.888114	10° 48' 02.26" N	57° 53' 17.21" E	1.000	Art. 76(5): 100 M line
OL368	10.815776	57.880899	10° 48' 56.79" N	57° 52' 51.24" E	1.000	Art. 76(5): 100 M line
OL369	10.830851	57.873530	10° 49' 51.07" N	57° 52' 24.71" E	1.000	Art. 76(5): 100 M line
OL370	10.845853	57.866009	10° 50' 45.07" N	57° 51' 57.63" E	1.000	Art. 76(5): 100 M line
OL371	10.860779	57.858336	10° 51' 38.81" N	57° 51' 30.01" E	1.000	Art. 76(5): 100 M line
OL372	10.875628	57.850511	10° 52' 32.26" N	57° 51' 01.84" E	1.000	Art. 76(5): 100 M line
OL373	10.890399	57.842536	10° 53' 25.44" N	57° 50' 33.13" E	1.000	Art. 76(5): 100 M line
OL374	10.905091	57.834411	10° 54' 18.33" N	57° 50' 03.88" E	1.000	Art. 76(5): 100 M line
OL375	10.919701	57.826137	10° 55' 10.93" N	57° 49' 34.09" E	1.000	Art. 76(5): 100 M line
OL376	10.934228	57.817714	10° 56' 03.22" N	57° 49' 03.77" E	1.000	Art. 76(5): 100 M line
OL377	10.948672	57.809145	10° 56' 55.22" N	57° 48' 32.92" E	1.000	Art. 76(5): 100 M line
OL378	10.963029	57.800428	10° 57' 46.91" N	57° 48' 01.54" E	1.000	Art. 76(5): 100 M line
OL379	10.977300	57.791567	10° 58' 38.28" N	57° 47' 29.64" E	1.000	Art. 76(5): 100 M line
OL380	10.991482	57.782560	10° 59' 29.34" N	57° 46' 57.22" E	1.000	Art. 76(5): 100 M line
OL381	11.005574	57.773409	11° 00' 20.07" N	57° 46' 24.28" E	1.000	Art. 76(5): 100 M line
OL382	11.019575	57.764116	11° 01' 10.47" N	57° 45' 50.82" E	1.000	Art. 76(5): 100 M line
OL383	11.033482	57.754680	11° 02' 00.54" N	57° 45' 16.85" E	1.000	Art. 76(5): 100 M line
OL384	11.047296	57.745103	11° 02' 50.27" N	57° 44' 42.37" E	1.000	Art. 76(5): 100 M line
OL385	11.061014	57.735386	11° 03' 39.65" N	57° 44' 07.39" E	1.000	Art. 76(5): 100 M line
OL386	11.074635	57.725530	11° 04' 28.69" N	57° 43' 31.91" E	1.000	Art. 76(5): 100 M line
OL387	11.088158	57.715536	11° 05' 17.37" N	57° 42' 55.93" E	1.000	Art. 76(5): 100 M line
OL388	11.101581	57.705404	11° 06' 05.69" N	57° 42' 19.45" E	1.000	Art. 76(5): 100 M line
OL389	11.114903	57.695136	11° 06' 53.65" N	57° 41' 42.49" E	1.000	Art. 76(5): 100 M line
OL390	11.128122	57.684732	11° 07' 41.24" N	57° 41' 05.04" E	1.000	Art. 76(5): 100 M line
OL391	11.141238	57.674194	11° 08' 28.46" N	57° 40' 27.10" E	1.000	Art. 76(5): 100 M line
OL392	11.154249	57.663524	11° 09' 15.30" N	57° 39' 48.69" E	1.000	Art. 76(5): 100 M line
OL393	11.167153	57.652721	11° 10' 01.75" N	57° 39' 09.80" E	1.000	Art. 76(5): 100 M line
OL394	11.179950	57.641787	11° 10' 47.82" N	57° 38' 30.43" E	1.000	Art. 76(5): 100 M line
OL395	11.192638	57.630723	11° 11' 33.50" N	57° 37' 50.60" E	1.000	Art. 76(5): 100 M line
OL396	11.205215	57.619530	11° 12' 18.78" N	57° 37' 10.31" E	1.000	Art. 76(5): 100 M line
OL397	11.217681	57.608209	11° 13' 03.65" N	57° 36' 29.55" E	1.000	Art. 76(5): 100 M line
OL398	11.230034	57.596762	11° 13' 48.12" N	57° 35' 48.34" E	1.000	Art. 76(5): 100 M line
OL399	11.242273	57.585189	11° 14' 32.18" N	57° 35' 06.68" E	1.000	Art. 76(5): 100 M line
OL400	11.254396	57.573492	11° 15' 15.83" N	57° 34' 24.57" E	1.000	Art. 76(5): 100 M line
OL401	11.266404	57.561672	11° 15' 59.05" N	57° 33' 42.02" E	1.000	Art. 76(5): 100 M line
OL402	11.278293	57.549729	11° 16' 41.86" N	57° 32' 59.03" E	1.000	Art. 76(5): 100 M line
OL403	11.290063	57.537666	11° 17' 24.23" N	57° 32' 15.60" E	1.000	Art. 76(5): 100 M line
OL404	11.301714	57.525484	11° 18' 06.17" N	57° 31' 31.74" E	1.000	Art. 76(5): 100 M line
OL405	11.311274	57.515283	11° 18' 40.59" N	57° 30' 55.02" E	0.829	Art. 76(4)(a)(ii): FOS + 60M

ECS Point	Latitude	Longitude East	Lat, DMS	Long, DMS	Dist from previous (M)	Article 76 provision invoked
OL406	11.731976	57.062221	11° 43' 55.12" N	57° 03' 44.00" E	36.656	Art. 76(4)(a)(ii): FOS + 60M
OL407	12.594771	56.539550	12° 35' 41.18" N	56° 32' 22.38" E	59.995	Art. 76(4)(a)(ii): FOS + 60M
OL408	12.598585	56.538792	12° 35' 54.91" N	56° 32' 19.65" E	0.232	Art. 76(4)(a)(ii): FOS + 60M
OL409	12.606786	56.537088	12° 36' 24.43" N	56° 32' 13.52" E	0.500	Art. 76(4)(a)(ii): FOS + 60M
OL410	12.614973	56.535314	12° 36' 53.91" N	56° 32' 07.13" E	0.500	Art. 76(4)(a)(ii): FOS + 60M
OL411	12.623146	56.533471	12° 37' 23.33" N	56° 32' 00.50" E	0.500	Art. 76(4)(a)(ii): FOS + 60M
OL412	12.631303	56.531558	12° 37' 52.69" N	56° 31' 53.61" E	0.500	Art. 76(4)(a)(ii): FOS + 60M
OL413	12.639444	56.529577	12° 38' 22.00" N	56° 31' 46.48" E	0.500	Art. 76(4)(a)(ii): FOS + 60M
OL414	12.647568	56.527526	12° 38' 51.25" N	56° 31' 39.09" E	0.500	Art. 76(4)(a)(ii): FOS + 60M
OL415	12.655676	56.525406	12° 39' 20.44" N	56° 31' 31.46" E	0.500	Art. 76(4)(a)(ii): FOS + 60M
OL416	12.663766	56.523217	12° 39' 49.56" N	56° 31' 23.58" E	0.500	Art. 76(4)(a)(ii): FOS + 60M
OL417	12.671837	56.520960	12° 40' 18.62" N	56° 31' 15.46" E	0.500	Art. 76(4)(a)(ii): FOS + 60M
OL418	12.679890	56.518634	12° 40' 47.61" N	56° 31' 07.08" E	0.500	Art. 76(4)(a)(ii): FOS + 60M
OL419	12.687924	56.516239	12° 41' 16.53" N	56° 30' 58.46" E	0.500	Art. 76(4)(a)(ii): FOS + 60M
OL420	12.695937	56.513776	12° 41' 45.38" N	56° 30' 49.60" E	0.500	Art. 76(4)(a)(ii): FOS + 60M
OL421	12.703930	56.511246	12° 42' 14.15" N	56° 30' 40.49" E	0.500	Art. 76(4)(a)(ii): FOS + 60M
OL422	12.711902	56.508647	12° 42' 42.85" N	56° 30' 31.13" E	0.500	Art. 76(4)(a)(ii): FOS + 60M
OL423	12.719853	56.505981	12° 43' 11.47" N	56° 30' 21.53" E	0.500	Art. 76(4)(a)(ii): FOS + 60M
OL424	12.727781	56.503247	12° 43' 40.01" N	56° 30' 11.69" E	0.500	Art. 76(4)(a)(ii): FOS + 60M
OL425	12.735687	56.500445	12° 44' 08.48" N	56° 30' 01.61" E	0.500	Art. 76(4)(a)(ii): FOS + 60M
OL426	12.743570	56.497577	12° 44' 36.85" N	56° 29' 51.28" E	0.500	Art. 76(4)(a)(ii): FOS + 60M
OL427	12.751428	56.494641	12° 45' 05.14" N	56° 29' 40.71" E	0.500	Art. 76(4)(a)(ii): FOS + 60M
OL428	12.759263	56.491639	12° 45' 33.35" N	56° 29' 29.90" E	0.500	Art. 76(4)(a)(ii): FOS + 60M
OL429	12.767072	56.488570	12° 46' 01.46" N	56° 29' 18.85" E	0.500	Art. 76(4)(a)(ii): FOS + 60M
OL430	12.774857	56.485435	12° 46' 29.49" N	56° 29' 07.57" E	0.500	Art. 76(4)(a)(ii): FOS + 60M
OL431	12.782615	56.482233	12° 46' 57.41" N	56° 28' 56.04" E	0.500	Art. 76(4)(a)(ii): FOS + 60M
OL432	12.790346	56.478966	12° 47' 25.25" N	56° 28' 44.28" E	0.500	Art. 76(4)(a)(ii): FOS + 60M
OL433	12.798051	56.475633	12° 47' 52.99" N	56° 28' 32.28" E	0.500	Art. 76(4)(a)(ii): FOS + 60M
OL434	12.805728	56.472234	12° 48' 20.62" N	56° 28' 20.05" E	0.500	Art. 76(4)(a)(ii): FOS + 60M
OL435	12.813377	56.468770	12° 48' 48.16" N	56° 28' 07.58" E	0.500	Art. 76(4)(a)(ii): FOS + 60M
OL436	12.820997	56.465241	12° 49' 15.59" N	56° 27' 54.87" E	0.500	Art. 76(4)(a)(ii): FOS + 60M
OL437	12.828589	56.461648	12° 49' 42.92" N	56° 27' 41.93" E	0.500	Art. 76(4)(a)(ii): FOS + 60M
OL438	12.836150	56.457989	12° 50' 10.14" N	56° 27' 28.76" E	0.500	Art. 76(4)(a)(ii): FOS + 60M
OL439	12.843681	56.454267	12° 50' 37.25" N	56° 27' 15.36" E	0.500	Art. 76(4)(a)(ii): FOS + 60M
OL440	12.851182	56.450480	12° 51' 04.26" N	56° 27' 01.73" E	0.500	Art. 76(4)(a)(ii): FOS + 60M
OL441	12.858651	56.446630	12° 51' 31.15" N	56° 26' 47.87" E	0.500	Art. 76(4)(a)(ii): FOS + 60M
OL442	12.866088	56.442716	12° 51' 57.92" N	56° 26' 33.78" E	0.500	Art. 76(4)(a)(ii): FOS + 60M
OL443	12.873494	56.438739	12° 52' 24.58" N	56° 26' 19.46" E	0.500	Art. 76(4)(a)(ii): FOS + 60M
OL444	12.880866	56.434699	12° 52' 51.12" N	56° 26' 04.92" E	0.500	Art. 76(4)(a)(ii): FOS + 60M
OL445	12.888205	56.430596	12° 53' 17.54" N	56° 25' 50.15" E	0.500	Art. 76(4)(a)(ii): FOS + 60M
OL446	12.895510	56.426430	12° 53' 43.84" N	56° 25' 35.15" E	0.500	Art. 76(4)(a)(ii): FOS + 60M

ECS Point	Latitude	Longitude East	Lat, DMS	Long, DMS	Dist from previous (M)	Article 76 provision invoked
OL447	12.902780	56.422203	12° 54' 10.01" N	56° 25' 19.93" E	0.500	Art. 76(4)(a)(ii): FOS + 60M
OL448	12.910016	56.417914	12° 54' 36.06" N	56° 25' 04.49" E	0.500	Art. 76(4)(a)(ii): FOS + 60M
OL449	12.917217	56.413563	12° 55' 01.98" N	56° 24' 48.83" E	0.500	Art. 76(4)(a)(ii): FOS + 60M
OL450	12.924381	56.409150	12° 55' 27.77" N	56° 24' 32.94" E	0.500	Art. 76(4)(a)(ii): FOS + 60M
OL451	12.931509	56.404677	12° 55' 53.43" N	56° 24' 16.84" E	0.500	Art. 76(4)(a)(ii): FOS + 60M
OL452	12.938600	56.400144	12° 56' 18.96" N	56° 24' 00.52" E	0.500	Art. 76(4)(a)(ii): FOS + 60M
OL453	12.945654	56.395550	12° 56' 44.36" N	56° 23' 43.98" E	0.500	Art. 76(4)(a)(ii): FOS + 60M
OL454	12.952670	56.390895	12° 57' 09.61" N	56° 23' 27.23" E	0.500	Art. 76(4)(a)(ii): FOS + 60M
OL455	13.403808	56.092049	13° 24' 13.71" N	56° 05' 31.38" E	32.129	Art. 76(4)(a)(ii): FOS + 60M
OL456	13.410824	56.087387	13° 24' 38.97" N	56° 05' 14.59" E	0.500	Art. 76(4)(a)(ii): FOS + 60M
OL457	13.417802	56.082665	13° 25' 04.09" N	56° 04' 57.60" E	0.500	Art. 76(4)(a)(ii): FOS + 60M
OL458	13.424741	56.077883	13° 25' 29.07" N	56° 04' 40.38" E	0.500	Art. 76(4)(a)(ii): FOS + 60M
OL459	13.431641	56.073043	13° 25' 53.91" N	56° 04' 22.96" E	0.500	Art. 76(4)(a)(ii): FOS + 60M
OL460	13.438501	56.068143	13° 26' 18.60" N	56° 04' 05.32" E	0.500	Art. 76(4)(a)(ii): FOS + 60M
OL461	13.445320	56.063186	13° 26' 43.15" N	56° 03' 47.47" E	0.500	Art. 76(4)(a)(ii): FOS + 60M
OL462	13.452099	56.058170	13° 27' 07.56" N	56° 03' 29.41" E	0.500	Art. 76(4)(a)(ii): FOS + 60M
OL463	13.458836	56.053096	13° 27' 31.81" N	56° 03' 11.15" E	0.500	Art. 76(4)(a)(ii): FOS + 60M
OL464	13.465532	56.047964	13° 27' 55.92" N	56° 02' 52.67" E	0.500	Art. 76(4)(a)(ii): FOS + 60M
OL465	13.472186	56.042776	13° 28' 19.87" N	56° 02' 34.00" E	0.500	Art. 76(4)(a)(ii): FOS + 60M
OL466	13.478797	56.037531	13° 28' 43.67" N	56° 02' 15.11" E	0.500	Art. 76(4)(a)(ii): FOS + 60M
OL467	13.485364	56.032229	13° 29' 07.31" N	56° 01' 56.03" E	0.500	Art. 76(4)(a)(ii): FOS + 60M
OL468	13.491889	56.026871	13° 29' 30.80" N	56° 01' 36.74" E	0.500	Art. 76(4)(a)(ii): FOS + 60M
OL469	13.498369	56.021458	13° 29' 54.13" N	56° 01' 17.25" E	0.500	Art. 76(4)(a)(ii): FOS + 60M
OL470	13.504804	56.015990	13° 30' 17.30" N	56° 00' 57.56" E	0.500	Art. 76(4)(a)(ii): FOS + 60M
OL471	13.511195	56.010466	13° 30' 40.30" N	56° 00' 37.68" E	0.500	Art. 76(4)(a)(ii): FOS + 60M
OL472	13.517541	56.004888	13° 31' 03.15" N	56° 00' 17.60" E	0.500	Art. 76(4)(a)(ii): FOS + 60M
OL473	13.523840	55.999256	13° 31' 25.83" N	55° 59' 57.32" E	0.500	Art. 76(4)(a)(ii): FOS + 60M
OL474	13.530093	55.993570	13° 31' 48.34" N	55° 59' 36.85" E	0.500	Art. 76(4)(a)(ii): FOS + 60M
OL475	13.536300	55.987831	13° 32' 10.68" N	55° 59' 16.19" E	0.500	Art. 76(4)(a)(ii): FOS + 60M
OL476	13.542459	55.982039	13° 32' 32.86" N	55° 58' 55.34" E	0.500	Art. 76(4)(a)(ii): FOS + 60M
OL477	13.548571	55.976194	13° 32' 54.86" N	55° 58' 34.30" E	0.500	Art. 76(4)(a)(ii): FOS + 60M
OL478	13.554635	55.970297	13° 33' 16.69" N	55° 58' 13.07" E	0.500	Art. 76(4)(a)(ii): FOS + 60M
OL479	13.560651	55.964349	13° 33' 38.34" N	55° 57' 51.66" E	0.500	Art. 76(4)(a)(ii): FOS + 60M
OL480	13.566617	55.958349	13° 33' 59.82" N	55° 57' 30.06" E	0.500	Art. 76(4)(a)(ii): FOS + 60M
OL481	13.572535	55.952298	13° 34' 21.13" N	55° 57' 08.27" E	0.500	Art. 76(4)(a)(ii): FOS + 60M
OL482	13.578402	55.946196	13° 34' 42.25" N	55° 56' 46.31" E	0.500	Art. 76(4)(a)(ii): FOS + 60M
OL483	13.584220	55.940045	13° 35' 03.19" N	55° 56' 24.16" E	0.500	Art. 76(4)(a)(ii): FOS + 60M
OL484	13.589987	55.933844	13° 35' 23.95" N	55° 56' 01.84" E	0.500	Art. 76(4)(a)(ii): FOS + 60M
OL485	13.595703	55.927594	13° 35' 44.53" N	55° 55' 39.34" E	0.500	Art. 76(4)(a)(ii): FOS + 60M
OL486	13.601368	55.921295	13° 36' 04.93" N	55° 55' 16.66" E	0.500	Art. 76(4)(a)(ii): FOS + 60M
OL487	13.606981	55.914947	13° 36' 25.13" N	55° 54' 53.81" E	0.500	Art. 76(4)(a)(ii): FOS + 60M

ECS Point	Latitude	Longitude East	Lat, DMS	Long, DMS	Dist from previous (M)	Article 76 provision invoked
OL488	13.612542	55.908552	13° 36' 45.15" N	55° 54' 30.79" E	0.500	Art. 76(4)(a)(ii): FOS + 60M
OL489	13.618051	55.902109	13° 37' 04.98" N	55° 54' 07.60" E	0.500	Art. 76(4)(a)(ii): FOS + 60M
OL490	13.623506	55.895620	13° 37' 24.62" N	55° 53' 44.23" E	0.500	Art. 76(4)(a)(ii): FOS + 60M
OL491	13.628909	55.889083	13° 37' 44.07" N	55° 53' 20.70" E	0.500	Art. 76(4)(a)(ii): FOS + 60M
OL492	13.634258	55.882501	13° 38' 03.33" N	55° 52' 57.01" E	0.500	Art. 76(4)(a)(ii): FOS + 60M
OL493	13.639552	55.875873	13° 38' 22.39" N	55° 52' 33.14" E	0.500	Art. 76(4)(a)(ii): FOS + 60M
OL494	13.644793	55.869200	13° 38' 41.26" N	55° 52' 09.12" E	0.500	Art. 76(4)(a)(ii): FOS + 60M
OL495	13.649979	55.862482	13° 38' 59.92" N	55° 51' 44.94" E	0.500	Art. 76(4)(a)(ii): FOS + 60M
OL496	13.655109	55.855720	13° 39' 18.39" N	55° 51' 20.59" E	0.500	Art. 76(4)(a)(ii): FOS + 60M
OL497	13.660184	55.848914	13° 39' 36.67" N	55° 50' 56.09" E	0.500	Art. 76(4)(a)(ii): FOS + 60M
OL498	13.665204	55.842065	13° 39' 54.73" N	55° 50' 31.43" E	0.500	Art. 76(4)(a)(ii): FOS + 60M
OL499	13.670167	55.835173	13° 40' 12.60" N	55° 50' 06.62" E	0.500	Art. 76(4)(a)(ii): FOS + 60M
OL500	13.675073	55.828238	13° 40' 30.27" N	55° 49' 41.66" E	0.500	Art. 76(4)(a)(ii): FOS + 60M
OL501	13.679923	55.821262	13° 40' 47.72" N	55° 49' 16.55" E	0.500	Art. 76(4)(a)(ii): FOS + 60M
OL502	13.684716	55.814245	13° 41' 04.98" N	55° 48' 51.28" E	0.500	Art. 76(4)(a)(ii): FOS + 60M
OL503	13.689451	55.807186	13° 41' 22.02" N	55° 48' 25.87" E	0.500	Art. 76(4)(a)(ii): FOS + 60M
OL504	13.694128	55.800087	13° 41' 38.86" N	55° 48' 00.32" E	0.500	Art. 76(4)(a)(ii): FOS + 60M
OL505	13.698747	55.792948	13° 41' 55.49" N	55° 47' 34.62" E	0.500	Art. 76(4)(a)(ii): FOS + 60M
OL506	13.703307	55.785770	13° 42' 11.91" N	55° 47' 08.78" E	0.500	Art. 76(4)(a)(ii): FOS + 60M
OL507	13.707809	55.778553	13° 42' 28.11" N	55° 46' 42.79" E	0.500	Art. 76(4)(a)(ii): FOS + 60M
OL508	13.712251	55.771298	13° 42' 44.10" N	55° 46' 16.67" E	0.500	Art. 76(4)(a)(ii): FOS + 60M
OL509	13.716634	55.764005	13° 42' 59.88" N	55° 45' 50.42" E	0.500	Art. 76(4)(a)(ii): FOS + 60M
OL510	13.720494	55.757458	13° 43' 13.78" N	55° 45' 26.85" E	0.447	Art. 76(4)(a)(ii): FOS + 60M