



CONTINENTAL SHELF SUBMISSION OF THE FEDERAL REPUBLIC OF SOMALIA

EXECUTIVE SUMMARY

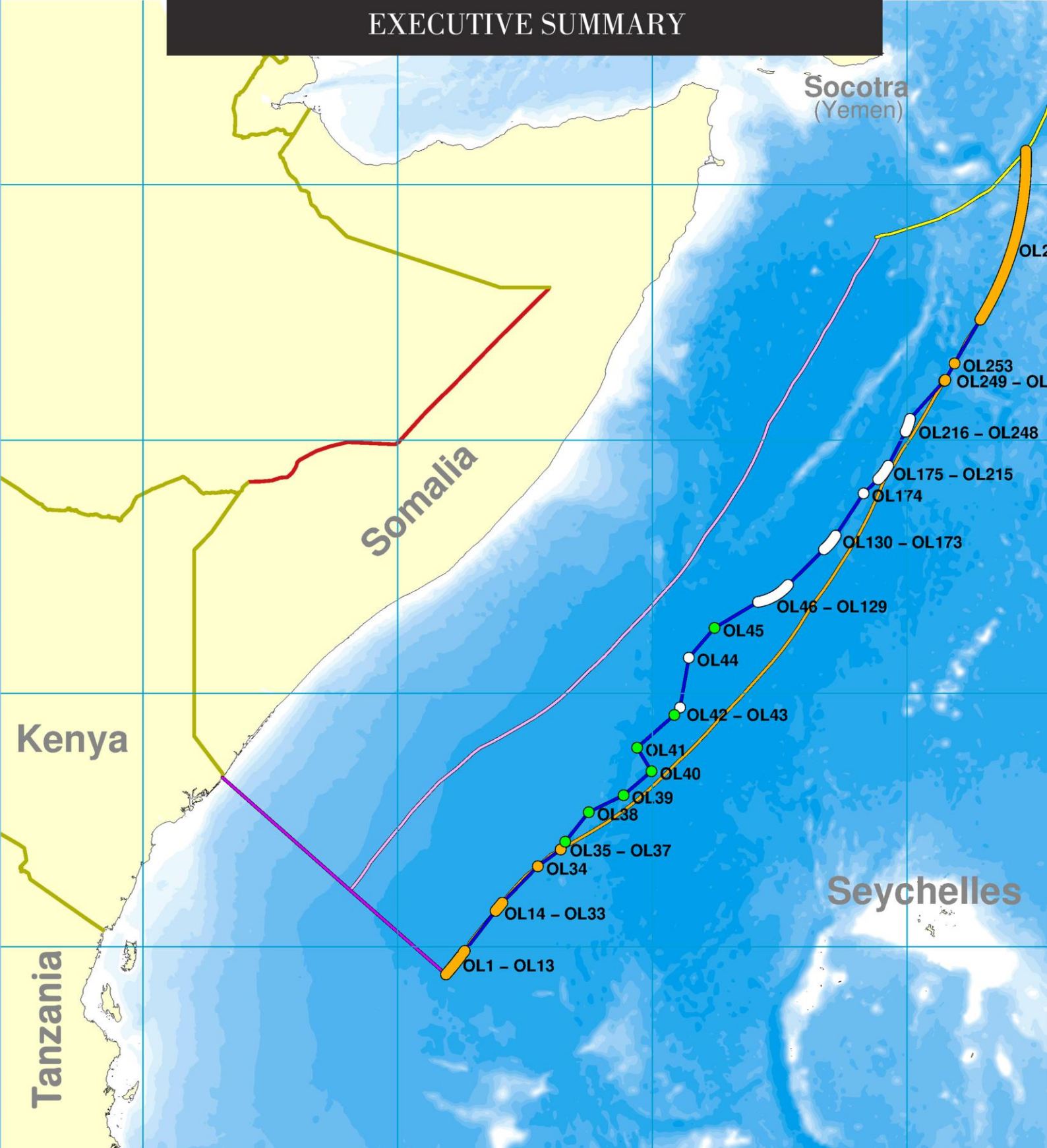


Table of contents

1. INTRODUCTION	2
2. MARITIME AREAS, MAPS AND COORDINATES	3
3. ASSISTANCE AND ADVICE RECEIVED DURING THE PREPARATION OF THIS SUBMISSION	4
4. THE OUTER LIMITS OF THE CONTINENTAL SHELF OF SOMALIA – BASELINES	4
5. PROVISIONS OF ARTICLE 76 INVOKED IN SUPPORT OF THIS SUBMISSION	5
6. GENERAL DESCRIPTION OF THE CONTINENTAL MARGIN OF SOMALIA	5
7. MARITIME DELIMITATIONS AND OTHER ISSUES.....	5
7.1. Maritime areas between Somalia and Kenya.....	6
7.2. Maritime areas between Somalia and Yemen	9
7.3. Maritime delimitation between Somalia and Tanzania	9
8. THE OUTER LIMITS OF THE SOMALI CONTINENTAL SHELF	10
APPENDIX 1	12

1. INTRODUCTION

Somalia ratified the United Nations Convention on the Law of the Sea, hereinafter referred to as “the Convention”, on 24 July 1989. The Convention entered into force for Somalia on 16 November 1994.

Article 4 of Annex II to the Convention stipulates that where a coastal State intends to establish, in accordance with article 76, the outer limits of its continental shelf beyond 200 nautical miles from the baselines from which the breadth of the territorial sea is measured, it should submit particulars of such limits to the Commission on the Limits of the Continental Shelf, hereinafter referred to as “the Commission”, along with supporting scientific and technical data as soon as possible, but in any case within ten years from the entry into force of the Convention for that State.

In 2001 the Eleventh Meeting of States Parties to the Convention decided that in the case of a State Party for which the Convention entered into force before 13 May 1999, it is understood that the ten-year time period referred to in article 4 of Annex II to the Convention shall be taken to have commenced on 13 May 1999 (document SPLOS/72, paragraph (a)). This decision applied to Somalia. Consequently, in the case of Somalia the ten-year time period referred to in article 4 of Annex II of the Convention expired on 13 May 2009.

The Eleventh Meeting of States Parties to the Convention also decided that the general issue of the ability of States, particularly developing States, to fulfil the requirements of article 4 of Annex II to the Convention be kept under review (document SPLOS/72, paragraph (b)). Due to lack of financial and technical resources, relevant capacity and expertise, or other similar constraints, many developing countries were facing particular challenges in meeting these requirements.

In June 2008 the Eighteenth Meeting of States Parties to the Convention therefore decided that it is understood that the ten-year period condition referred to in article 4 of Annex II to

the Convention may be satisfied by submitting preliminary information indicative of the outer limits of the continental shelf beyond 200 nautical miles from the baselines from which the breadth of the territorial sea is measured, together with a descriptive report on the status of preparation and intended date of the final submission (document SPLOS/183, paragraph 1 (a)).

Due to a lack of financial and technical resources and relevant capacity and expertise, Somalia was among the developing States that faced particular challenges in fulfilling the requirements of article 4 of Annex II to the Convention. Moreover, Somalia continues to experience a number of other constraints relating to the political and security situation in the country, substantially hindering the fulfilment of these requirements.

On this basis, in October 2008, the Special Representative of the Secretary-General of the United Nations for Somalia (SRSG), Mr. Ahmedou Ould Abdallah, initiated the preparation of preliminary information, as defined above, regarding the outer limits of the continental shelf of Somalia beyond 200 nautical miles from the baselines from which the breadth of the territorial sea is measured, with the aim of submitting this to the Secretary-General in accordance with the decision set out in SPLOS/183. In order to prepare this material, the SRSG accepted an offer of assistance from the Government of Norway. On 14 April 2009 the Transitional Federal Government (TFG) of the Republic of Somalia submitted such preliminary information to the Secretary-General of the United Nations.

In August 2009, at the request of the TFG, the Norwegian Government agreed to proceed with providing assistance towards the preparation of a full submission. The work has been carried out jointly by the Royal Norwegian Ministry of Foreign Affairs, the Norwegian Mapping Authority, the Norwegian Petroleum Directorate and GRID-Arendal.

This submission fulfils the obligations Somalia has under article 76 and article 4 of Annex II of

the Convention and supplements the preliminary information submitted by Somalia on 14 April 2009 in accordance with the decisions contained in documents SPLOS/72 and SPLOS/183, requiring the submission of information on the outer limits of its continental shelf beyond 200 nautical miles from the baselines from which the breadth of the territorial sea is measured, in respect of areas offshore Somalia. The Main Body of this submission contains a detailed description of the scientific and technical data, maps, technical procedures and scientific methodologies that were applied in the establishment of the outer limits of the continental shelf of Somalia where those limits extend beyond 200 nautical miles.

The submission is intended to serve and safeguard the present and future interests of the Somali state and its people.

2. MARITIME AREAS, MAPS AND COORDINATES

The data and information contained in this submission are intended to enable the establishment of the outer limits of the continental shelf of Somalia where those limits extend beyond 200 nautical miles from the baselines in the high seas in the north-western Indian Ocean.

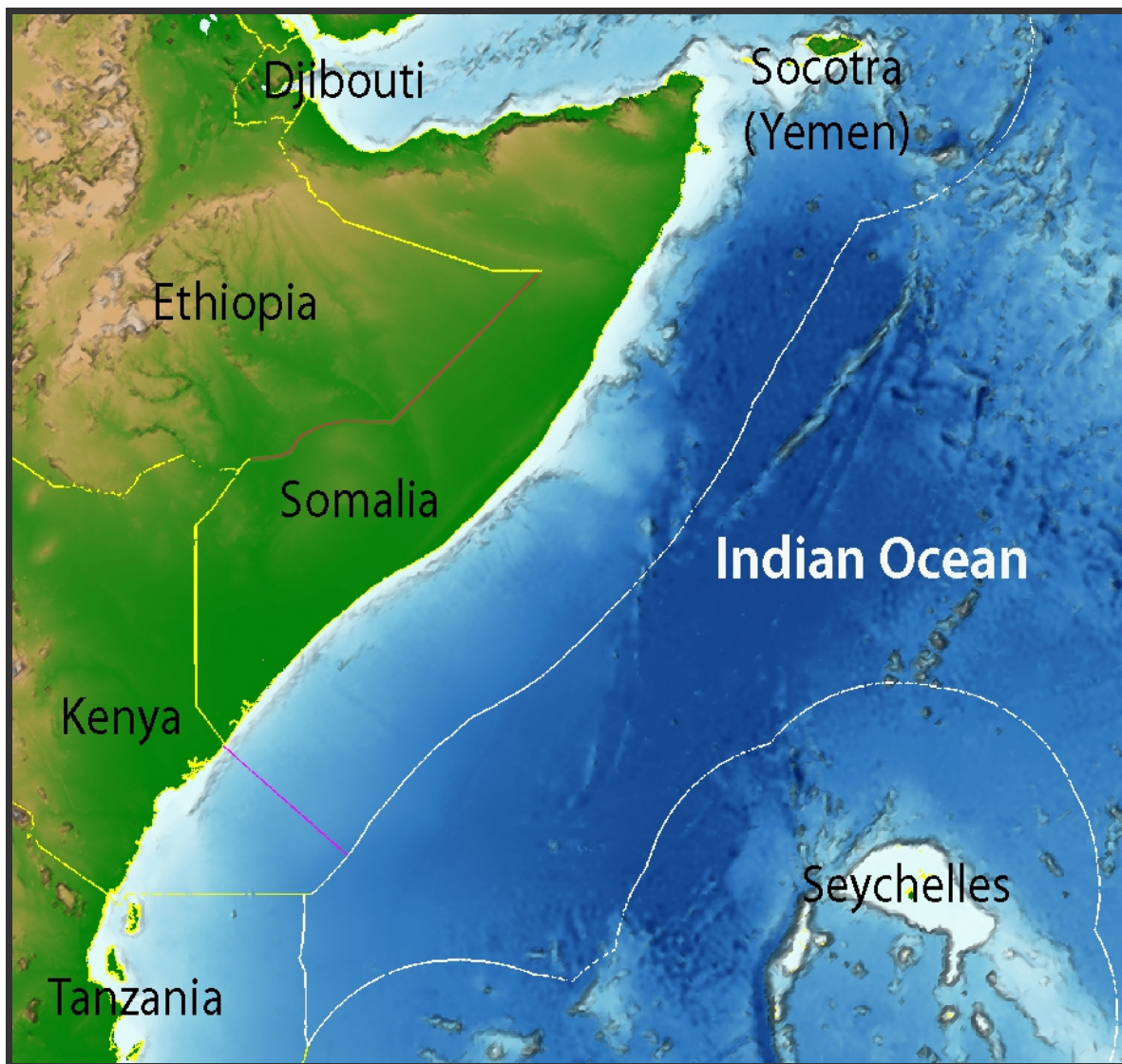


Figure 1. Overview of the African landmass and maritime areas of the north-western Indian Ocean. White lines – 200 nautical mile limits, yellow/red lines – land and maritime bilateral boundaries, pink line – computed equidistance line. The map figure is made for illustrative purposes only.

In accordance with the Scientific and Technical Guidelines of the Commission this executive summary includes a map showing the outer limits of the continental shelf (Figure 6) and a list of the coordinates of the fixed points used to define the outer limits of the continental shelf beyond 200 nautical miles, the distance in nautical miles between adjacent points, and the provision of article 76 on which each point is based (Appendix 1).

3. ASSISTANCE AND ADVICE RECEIVED DURING THE PREPARATION OF THIS SUBMISSION

The Government of Norway has provided assistance and advice to the Federal Government of Somalia (FGS) in the preparation of the present submission, and the Royal Norwegian Ministry of Foreign Affairs, the Norwegian Petroleum Directorate and the Norwegian Mapping Authority have been involved in this work.

Based on open and accessible sources and modern Geographical Information System (GIS) technology, the UNEP Shelf Programme, represented by GRID-Arendal, has carried out the technical analyses and prepared the material contained in the Main Body document and the annexes to this submission.

The FGS were also assisted in the preparation of the present submission by Mr. Harald Brekke, a former member of the Commission (1997-2012). No advice was provided by any other member of the Commission.

All expenses related to the preparation of the present submission have been covered by the Government of Norway.

The Norwegian assistance was based on the following premises:

- Assistance should include the preparation of a submission to the Commission in accordance with article 76 of the Convention and article 4 of Annex II to the Convention, as well as the decisions contained in SPLOS/72, paragraph (a), and SPLOS/183,

paragraph 1 (a), and the Somali preliminary information submitted on 14 April 2009.

- Norway takes no position on, nor does it accept any responsibility for, any legal or other issues pertaining to the preparation of the submission, including issues pertaining to baselines or maritime delimitation. The same applies as regards the assistance provided by the UNEP Shelf Programme/GRID-Arendal.
- Assistance and advice provided by Norway should be based on open and accessible sources, and in particular should include technical analyses and preparation of a draft Main Body document based on modern Geographical Information System (GIS) technology provided by the UNEP Shelf Programme/GRID-Arendal.
- A major aim of the Norwegian assistance has been to ensure that Somalia meets the time period condition referred to in article 4 of Annex II to the Convention, the decisions contained in SPLOS/72 and SPLOS/183, and provides supplements the Somali preliminary information submitted on 14 April 2009.

4. THE OUTER LIMITS OF THE CONTINENTAL SHELF OF SOMALIA – BASELINES

The present submission deals with the establishment of the outer limits of the continental shelf of Somalia, without prejudice to any issues of bilateral maritime delimitation with neighbouring States. Such issues will be referred to under item 7 below.

Somalia is of the view that the normal baseline from which the breadth of the territorial sea is measured is defined at the low-water line along the coast, unless specifically stipulated otherwise. In accordance with the pertinent provisions of the Convention, and with the assistance of satellite imagery, the Norwegian Mapping Authority has identified a total of 608 baseline points along the coast of Somalia from the border with Djibouti in the north to the starting point of Kenya-Somalia maritime boundary, hereinafter “S608/K1” as depicted in Figure 4.

With a few exceptions, these points constitute a normal baseline in accordance with the provisions set out in the Convention. The length of the Somali coastline, as computed from the sum of the distances between these 608 baseline points from the Djibouti to the S608/K1, is 3050 km. The baselines points are established with an accuracy of one second of arc (30 m).

5. PROVISIONS OF ARTICLE 76 INVOKED IN SUPPORT OF THIS SUBMISSION

Somalia invokes the provisions of paragraphs 1, 3 and 4 of article 76 in support of the establishment of the outer limits of the continental shelf beyond 200 nautical miles, based on the considerations outlined in Section 6. Both the “Hedberg” and “Gardiner” formulae lines have been used in this submission. The outer limits of the continental shelf have been delineated by fixed points connected by straight lines not exceeding 60 nautical miles in length, as set out in the provisions of article 76, paragraph 7 (see Figure 6).

6. GENERAL DESCRIPTION OF THE CONTINENTAL MARGIN OF SOMALIA

The Somali continental margin is characterised by a narrow continental shelf which broadens slightly to the north. A pronounced submarine spur (the Central Somali Spur) is observed extending to the east midway between S608/K1 in the south and the tip of the Horn of Africa in the north. South of the Central Somali Spur, the continental slope exhibits a smooth gradient, in contrast to the more complex morphology to the north. The slope extends to the deep abyssal plain of the Somali Basin at a depth of about 5000 m.

The Somali Basin is subdivided into three sub-basins. The Central Somali Spur separates the Northern Somali Basin in the north from the Western Somali Basin in the south. The Eastern Somali Basin is located to the east, separated from the two aforementioned sub-basins by

south-west and south-trending seafloor ridges, including the Chain Ridge (Figure 2).

The Chain Ridge extends northwards until it links with the southern flank of the Carlsberg Ridge whence it merges with the southern termination of the Owen Fracture Zone, which in turn connects the Carlsberg Ridge to the Sheba Ridge to the north.

The Carlsberg Ridge constitutes the northern extension of the Central Indian Ridge, which is the active spreading ridge of the Indian Ocean. The Sheba Ridge continues westwards from the Owen Fracture Zone, extending north of Socotra and into the Gulf of Aden and the Red Sea.

The details of the opening of the Indian Ocean are still subject to ongoing research, but it is clear that the margin of Somalia is part of a passive continental margin. The margin was formed in Jurassic times as a result of continental break-up between the African continent and the continental block containing Madagascar and India.

In the Jurassic, as part of the Gondwana supercontinent, Somalia was juxtaposed with Madagascar in the south (south of the Central Somali Spur), and with northern India in the north.

The initial rifting of this region of Gondwana began in the Middle Jurassic, prior to the opening of the Somali Basin. Magnetic anomalies from both the Western and Eastern Somali Basins indicate the presence of old oceanic crust. The magnetic anomalies in the Western Somali Basin are interpreted to represent both limbs of an extinct spreading segment. The crust beneath the small Northern Somali Basin also exhibits relatively low amplitude magnetic anomalies indicative of oceanic crust.

The magnetic anomalies suggest that seafloor spreading commenced in the Late Jurassic (the age of the oldest M22 anomaly), and ceased at anomaly M0 time in the Early Cretaceous. A phase of renewed spreading started in the Late Cretaceous causing India to migrate northwards along with the eastern parts of the then single Somali Basin, which was subsequently split by the formation of the Chain Ridge which developed a result of this transcurrent plate movement process.

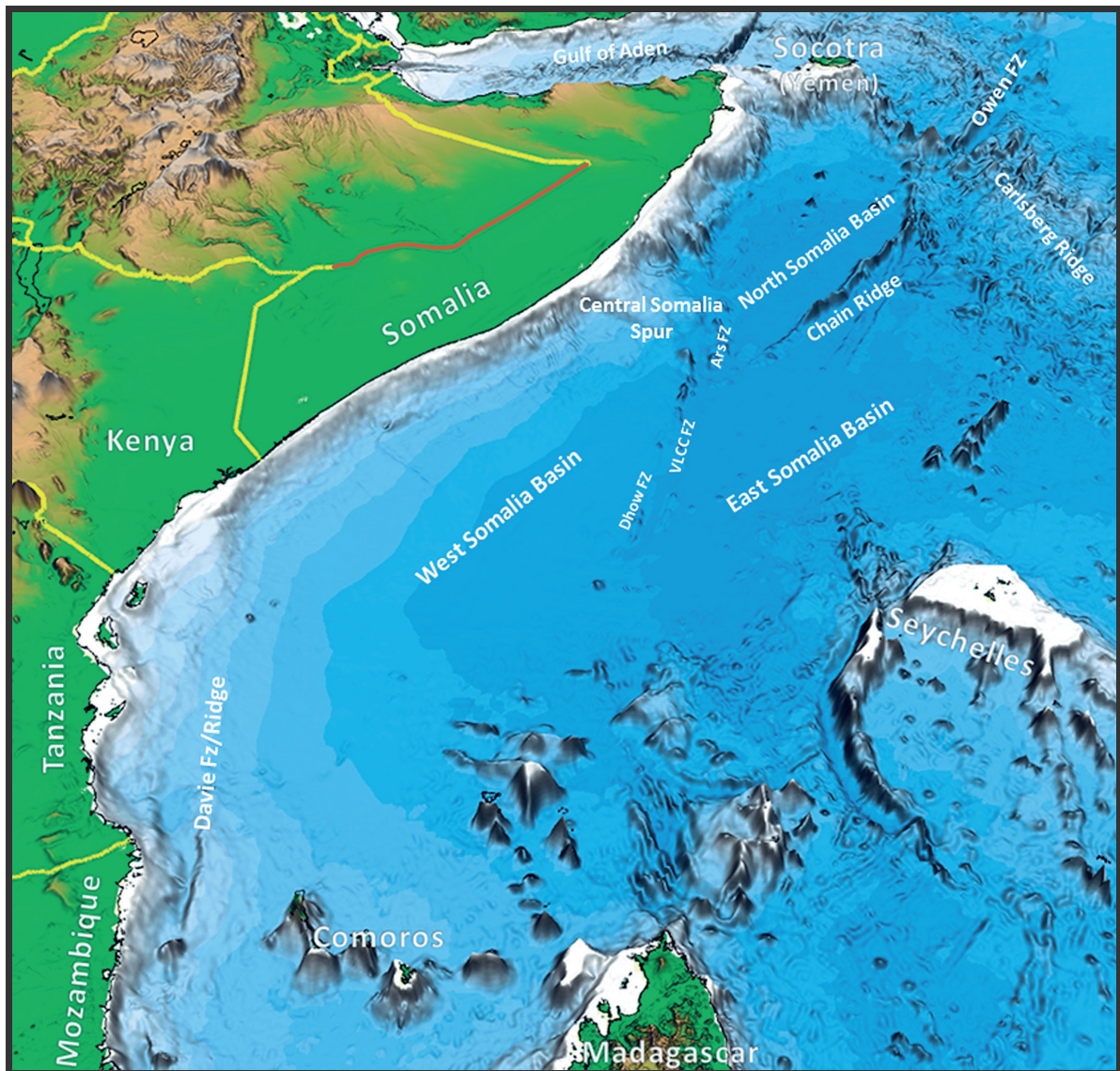


Figure 2. Geomorphological structural setting of the East African Continental Margin. Remarks on the names of fracture zones SW of the Central Somali Spur: These zones are named after the three principal types of vessels encountered sailing in these waters; the Dhow is an Arab merchant ships, VLCC stands for Very Large Crude Carrier, and ARS for Auxiliary Rescue and Salvage.

7. MARITIME DELIMITATIONS AND OTHER ISSUES

All information and maps contained in this submission are without prejudice to issues of maritime delimitation.

There remain unresolved issues in relation to the bilateral delimitation of the continental shelf with the Federal Republic of Somalia's neighbouring states Kenya and Yemen and potentially Tanzania. These issues will have to be considered

by reference to Rule 46 and Annex I of the Rules of Procedure of the Commission.

Somalia's approach regarding maritime delimitation with neighbouring States is based on the international law of the sea and are in keeping with the settled jurisprudence of the International Court of Justice on maritime delimitation, the first stage in the process leading to the delimitation of the continental shelf may be to establish a provisional equidistance line.

7.1 Maritime areas between Somalia and Kenya

The delimitation of the continental shelf between the Federal Republic of Somalia and the Republic of Kenya has not yet been

resolved. On the basis of the jurisprudence of the International Court of Justice on maritime delimitation, Somalia's continental shelf claim may extend south at least up to a line of equidistance drawn from S608/K1 (Figure 3).

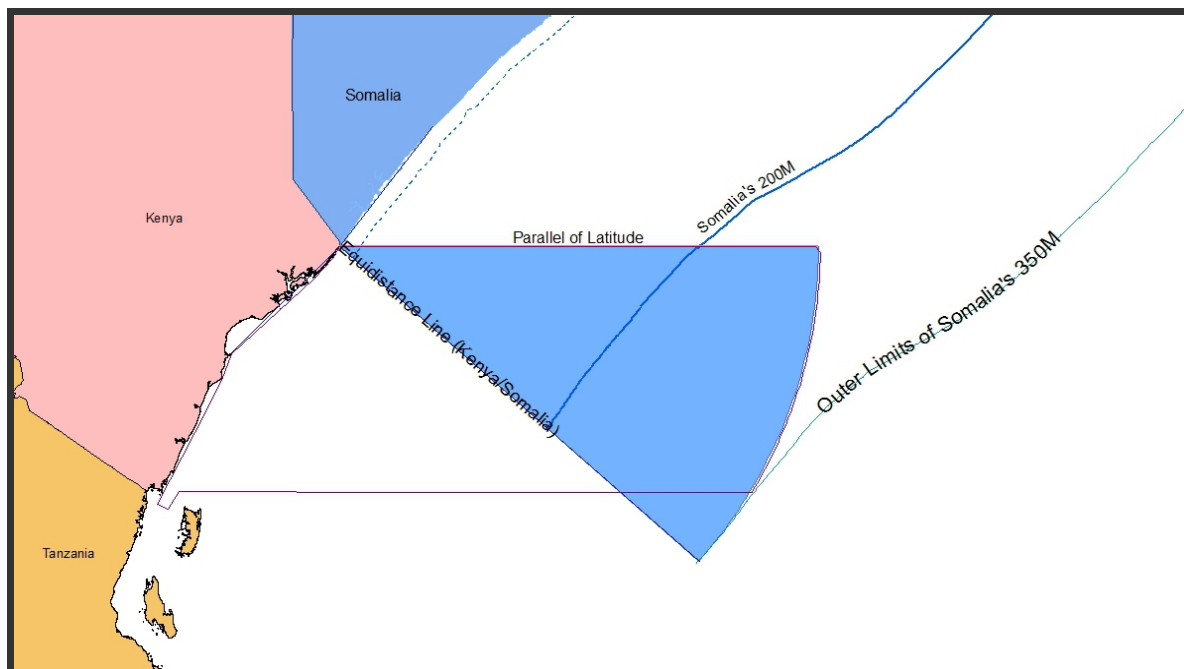


Figure 3. Map figure showing the equidistance line of Somalia, representing the Somali claim (see text below for details), and the 200 M limit line and 350 M maximum constraint line as measured from the baseline of Somalia. The blue maritime areas indicate possible overlap with Kenyan claims. The map figure is made for illustrative purposes only.

The coastlines of both Somalia and Kenya are generally rather straight and featureless, with the exception of a protuberance at S608/K1. Over a distance of about 200 km in a northerly direction from the point S608/K1, the Somali coast exhibits a general azimuth of 38 degrees off north. For a distance of about 200 km south of the point S608/K1, the general azimuth of the Kenyan coast is 225 degrees off north.

On the basis of these data, Somalia claims a continental shelf area, based on a line of equidistance **extending from point S608/K1 (see Figure 4) with an azimuth $(225 + 38)/2 = 131.5$ degrees off north.**

The equidistance line is described by the following coordinates:

Latitude South			Longitude East			Point Number
Deg.	Min.	Sec.	Deg.	Min.	Sec.	
-1	39	43.1	41	33	33.2	1 (base point S608)
-2	13	02.8	42	11	00.4	2
-2	46	21.6	42	48	29.4	3
-3	19	39.1	43	26	00.4	4
-3	52	55.2	44	03	33.9	5
-4	26	09.5	44	41	10.4	6
-4	59	22.0	45	18	50.3	7
-5	32	32.2	45	56	33.9	8
-5	33	15.1	45	57	22.7	9
-5	32	47.4	45	56	51.1	10

(Geodetic datum: WGS84)

The equidistance line intersects	Latitude South			Longitude East		
	Deg.	Min.	Sec.	Deg.	Min.	Sec.
the 12 nautical mile territorial sea limit at	-1	48	13.9	41	43	07.0
the 24 nautical mile contiguous zone at	-1	56	13.7	41	52	06.1
the 200 nautical mile EEZ at	-3	53	18.3	44	04	00.0
the 350 nautical mile limit at	-5	32	47.4	45	56	51.1

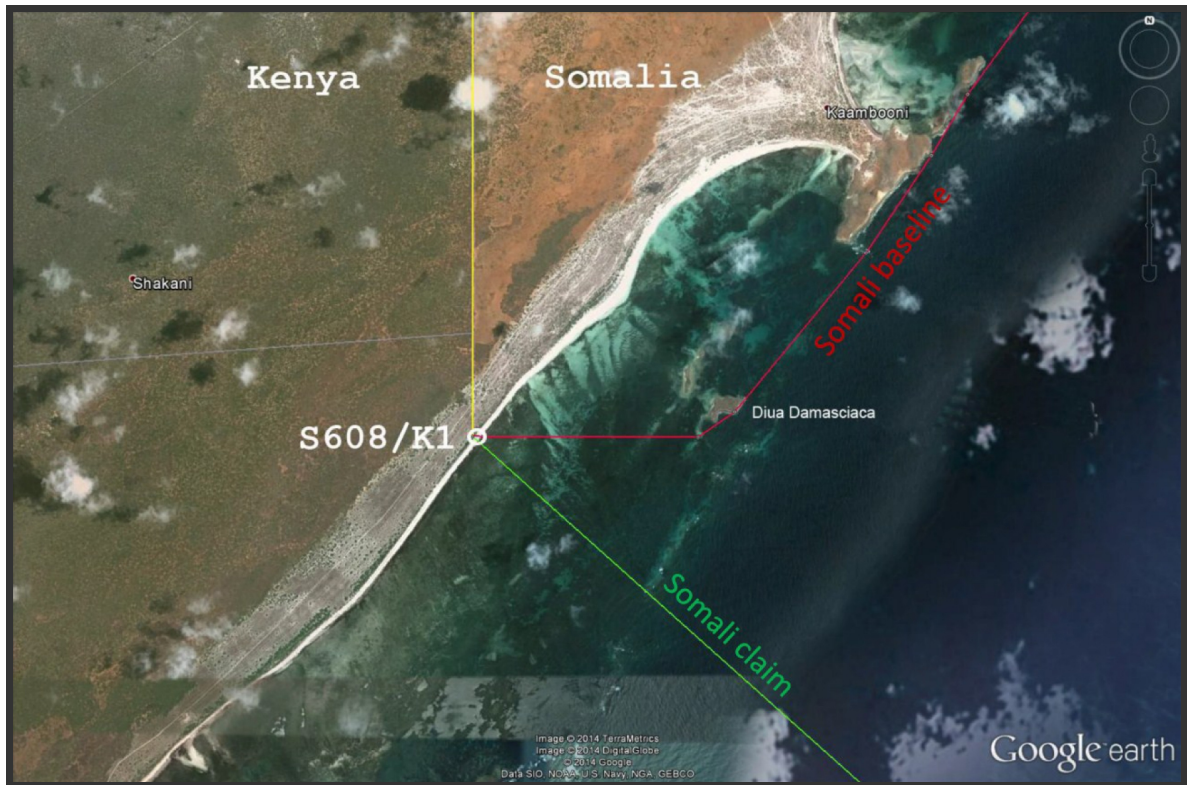


Figure 4. The starting point for the Somali claim is point S608/K1. The full extent of the claim is shown Figure 5. The map figure is made for illustrative purposes only.

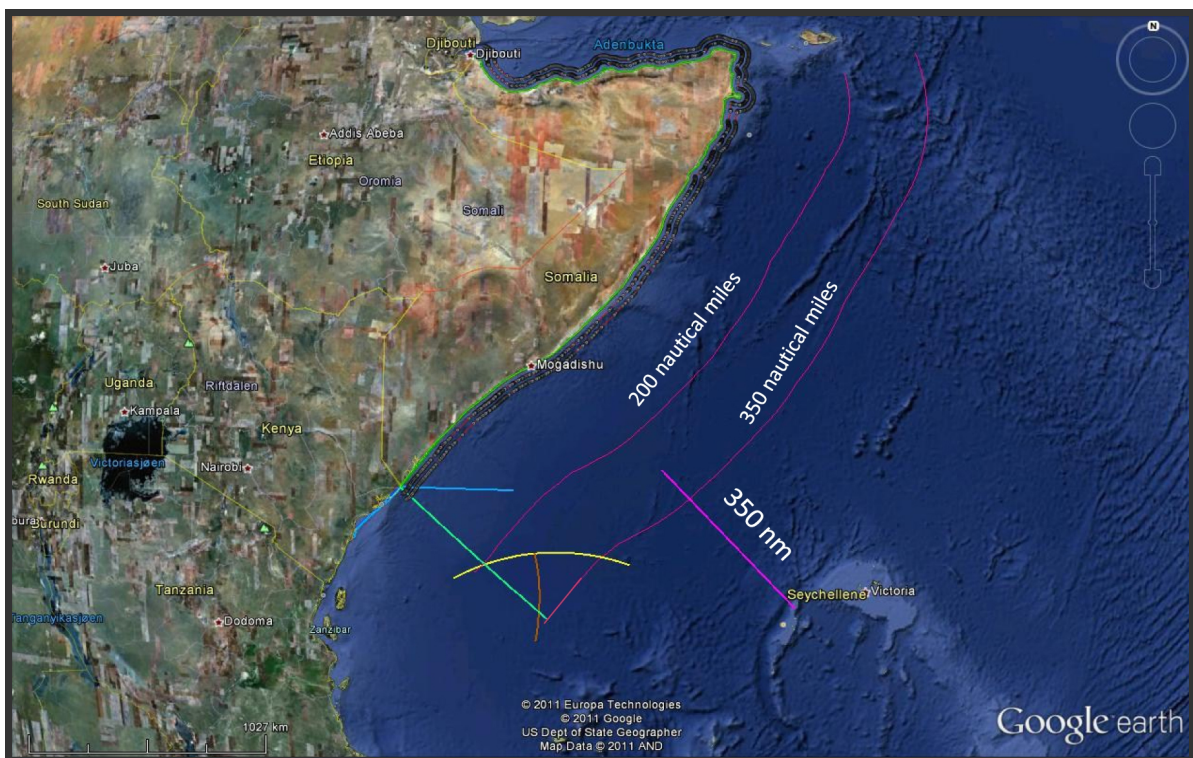


Figure 5. Limit lines and geodetic constructions illustrating the relationships between the maritime spaces of Somalia and its neighbouring countries. Blue lines: Kenya's claim. Yellow line: 350 nautical miles from Aldabra (Seychelles). Brown line: 350 nautical miles from Pemba (Tanzania). Pink line: Illustrating 350 nautical miles possible overlap between Somalia and main plateau of Seychelles. The map figure is made for illustrative purposes only.

The unresolved issue of delimitation of the continental shelf between the Federal Republic of Somalia and the Republic of Kenya is to be regarded as a “maritime dispute” for the purposes of rule 5 (a) of Annex I of the Rules of Procedure of the Commission. The purported claim by the Republic of Kenya includes maritime areas claimed by the Federal Republic of Somalia, thereby resulting in an overlapping area which, for the same purposes, constitutes “the area under dispute”.

The present submission by the Federal Republic of Somalia includes the areas under dispute between the two coastal States. Somalia is ready to enter into consultations with the Republic of Kenya with a view to reaching an agreement or understanding which will allow the Commission to consider and make recommendations on submissions by each of the two coastal States in the areas under dispute without prejudice to the final delimitation of the continental shelf to be concluded subsequently in the areas under dispute by the two coastal States. Pending such an agreement or understanding, Somalia requests the Commission not to take any steps that would prejudice any future bilateral delimitation in the maritime area concerned.

7.2 Maritime areas between Somalia and Yemen

The delimitation of the continental shelf between the Federal Republic of Somalia and the Republic of Yemen has not yet been resolved. Based on the current submission and the information published on the Commission’s website regarding the Executive Summary of the submission made by the Republic of Yemen, it is evident that there is an overlap between Somali and Yemeni claims as regards the areas of the continental shelf beyond 200 nautical miles.

Unresolved delimitation issues between two coastal States, as well as any overlap between the areas of the continental shelf beyond 200 nautical miles claimed by them, should be considered by reference to rule 46 and Annex I of the Rules of Procedure of the Commission. For the purpose of article 5 (a) of Annex I of these Rules of Procedure, such unresolved delimitation issues should be regarded as a “maritime dispute”. Areas covered by overlapping claims made by the two

coastal States constitute for the same purposes “the areas under dispute”.

Somalia is ready to enter into consultations with the Republic of Yemen with a view to reaching an agreement or understanding which would allow the Commission to consider and make recommendations on submissions by each of the two coastal States in the areas under dispute without prejudice to the final delimitation of the continental shelf to be concluded subsequently in the areas under dispute by the two coastal States. Pending such an agreement or understanding, Somalia requests the Commission not to take any steps that would prejudice any future bilateral delimitation in the maritime area concerned.

7.3 Maritime delimitation between Somalia and Tanzania

Based on the current submission and the information published on the Commission’s website regarding the Executive Summary of the submission made by the Federal Republic of Somalia, there is a potential overlap between the Somali and the Tanzanian claims as regards the areas of the continental shelf beyond 200 nautical miles (Figure 3).

Unresolved delimitation issues between two coastal States, as well as any overlap between the areas of the continental shelf beyond 200 nautical miles claimed by them, should be considered by reference to rule 46 of Annex I of the Rules of Procedure of the Commission. For the purpose of article 5 (a) of Annex I of these Rules of Procedure, such unresolved delimitation issues should be regarded as a “maritime dispute”. Areas covered by overlapping claims made by the two coastal States constitute for the same purposes “the areas under dispute”.

Somalia is ready to enter into consultations with the United Republic of Tanzania with a view to reaching an agreement or understanding which will allow the Commission to consider and make recommendations on submissions by each of the two coastal States in the areas under dispute without prejudice to the final delimitation of the continental shelf to be concluded subsequently in the areas under dispute by the two coastal States. Pending such an agreement or understanding, Somalia requests the Commission not to take any steps that would prejudice any future bilateral delimitation in the maritime area concerned.

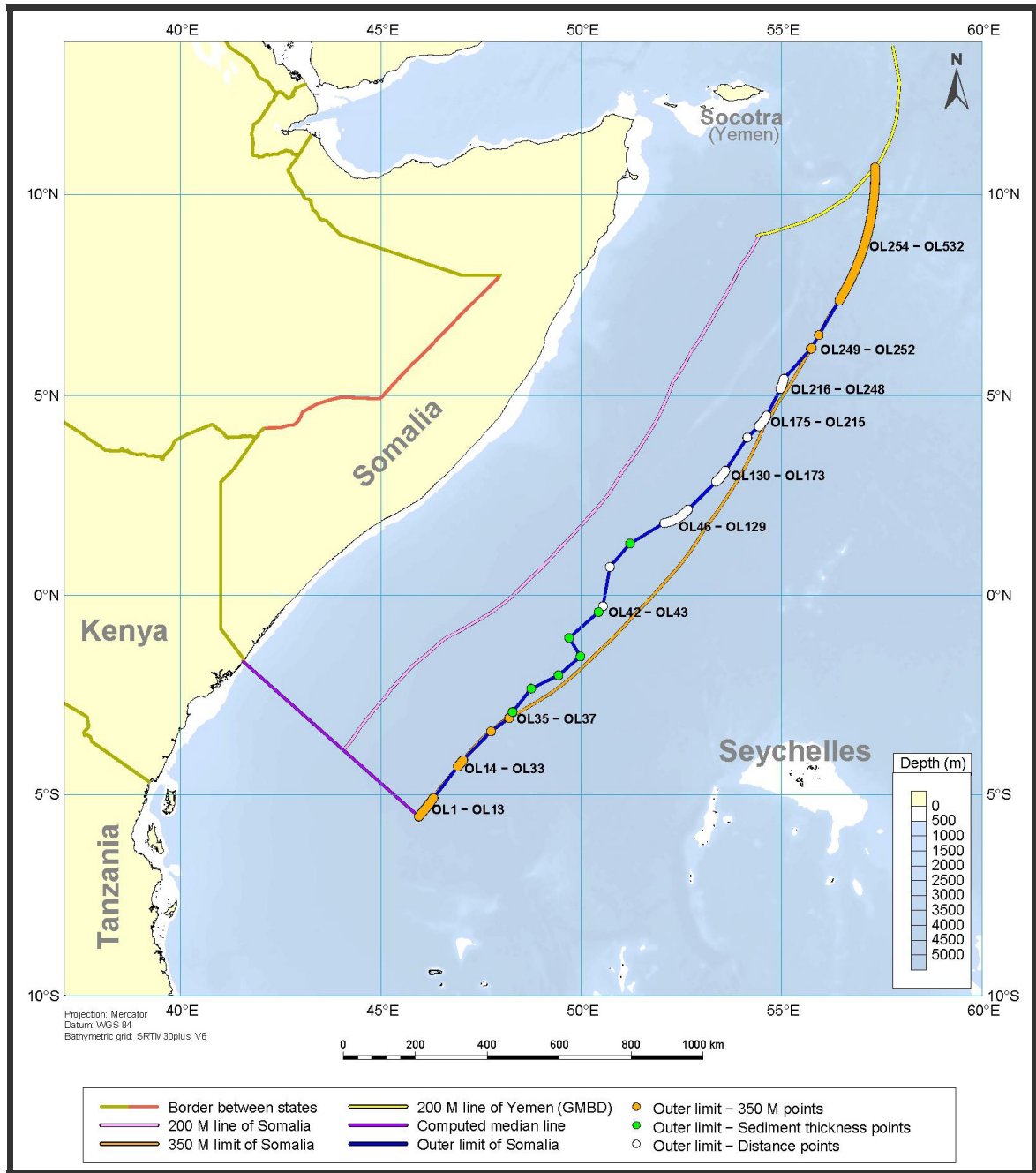


Figure 6. The outer limits of the continental shelf of Somalia.

8. THE OUTER LIMITS OF THE SOMALI CONTINENTAL SHELF

The outer limits of the Somali continental shelf beyond 200 nautical miles is defined by 532 fixed points established in accordance with article 76 of the Convention. These are as follows:

- 8 points defined by the sediment thickness formula set out in article 76, paragraph 4(a)(i);
- 206 points defined by arcs constructed 60 nautical miles from the foot of the continental slope in accordance with article 76, paragraph 4(a)(ii); and

- 318 points defined in accordance with the constraint criterion of 350 nautical miles distance from the baseline, provided for in article 76, paragraph 5.

The 532 fixed points are connected by straight lines not exceeding 60 nautical miles in length, as provided for in article 76, paragraph 7. The fixed points and connecting lines are shown in Figure 6. A colour code has been used to indicate under which article 76 criterion each point has been established. (Further details can be found in Appendix 1).

For the purpose of this submission, the northernmost fixed point of the outer limit of the Somali continental shelf is established on the Yemeni 200 nautical miles line at a distance of 60 nautical miles from the northernmost foot of the

continental slope point submitted by Somalia (Figure 6).

The southernmost fixed point of the outer limits of the Somali continental shelf is established at the intersection of the 350 nautical miles constraint line and the calculated equidistance line between Somalia and Kenya.

For both the northern- and southernmost fixed points described above, reference is made to the list of coordinates of fixed points contained in Appendix 1. The final delimitation between Somalia and Yemen in the north and Kenya and Tanzania in the south would have to be determined through bilateral agreements (reference is made to Section 7 above), in accordance with international law.

APPENDIX 1

List of coordinates

ECS Point	Longitude East	Latitude	Long E Deg.	Long E Min.	Long E Sec.	Lat Deg.	Lat Min.	Lat Sec.	Article 76 provision invoked
OL1	45,947529	-5,546500	45	56	51,10	-5	32	47,40	Art. 76(5): 350 M line
OL2	45,974721	-5,515278	45	58	28,99	-5	30	55,00	Art. 76(5): 350 M line
OL3	46,004168	-5,481111	46	0	15,00	-5	28	52,00	Art. 76(5): 350 M line
OL4	46,033336	-5,446667	46	2	0,01	-5	26	48,00	Art. 76(5): 350 M line
OL5	46,062500	-5,411943	46	3	45,00	-5	24	42,99	Art. 76(5): 350 M line
OL6	46,091111	-5,376943	46	5	28,00	-5	22	37,00	Art. 76(5): 350 M line
OL7	46,124165	-5,336111	46	7	26,99	-5	20	10,00	Art. 76(5): 350 M line
OL8	46,152223	-5,300833	46	9	8,00	-5	18	3,00	Art. 76(5): 350 M line
OL9	46,179999	-5,265278	46	10	48,00	-5	15	55,00	Art. 76(5): 350 M line
OL10	46,207780	-5,229445	46	12	28,01	-5	13	46,00	Art. 76(5): 350 M line
OL11	46,234999	-5,193612	46	14	5,99	-5	11	37,00	Art. 76(5): 350 M line
OL12	46,288889	-5,120833	46	17	20,00	-5	7	15,00	Art. 76(5): 350 M line
OL13	46,315277	-5,084444	46	18	55,00	-5	5	4,00	Art. 76(5): 350 M line
OL14	46,921891	-4,294806	46	55	18,81	-4	17	41,30	Art. 76(5): 350 M line
OL15	46,927779	-4,287945	46	55	40,01	-4	17	16,60	Art. 76(5): 350 M line
OL16	46,939471	-4,274195	46	56	22,10	-4	16	27,10	Art. 76(5): 350 M line
OL17	46,945305	-4,267306	46	56	43,10	-4	16	2,30	Art. 76(5): 350 M line
OL18	46,951140	-4,260389	46	57	4,10	-4	15	37,40	Art. 76(5): 350 M line
OL19	46,956943	-4,253500	46	57	25,00	-4	15	12,60	Art. 76(5): 350 M line
OL20	46,962751	-4,246584	46	57	45,90	-4	14	47,70	Art. 76(5): 350 M line
OL21	46,968554	-4,239666	46	58	6,79	-4	14	22,80	Art. 76(5): 350 M line
OL22	46,974335	-4,232721	46	58	27,60	-4	13	57,80	Art. 76(5): 350 M line
OL23	46,980111	-4,225777	46	58	48,40	-4	13	32,80	Art. 76(5): 350 M line
OL24	46,991641	-4,211889	46	59	29,91	-4	12	42,80	Art. 76(5): 350 M line
OL25	47,003112	-4,197945	47	0	11,20	-4	11	52,60	Art. 76(5): 350 M line
OL26	47,014530	-4,183944	47	0	52,31	-4	11	2,20	Art. 76(5): 350 M line
OL27	47,020225	-4,176945	47	1	12,81	-4	10	37,00	Art. 76(5): 350 M line
OL28	47,025916	-4,169945	47	1	33,30	-4	10	11,80	Art. 76(5): 350 M line
OL29	47,031584	-4,162917	47	1	53,70	-4	9	46,50	Art. 76(5): 350 M line
OL30	47,037248	-4,155889	47	2	14,09	-4	9	21,20	Art. 76(5): 350 M line
OL31	47,042917	-4,148833	47	2	34,50	-4	8	55,80	Art. 76(5): 350 M line
OL32	47,048553	-4,141806	47	2	54,79	-4	8	30,50	Art. 76(5): 350 M line
OL33	47,054195	-4,134751	47	3	15,10	-4	8	5,10	Art. 76(5): 350 M line
OL34	47,751252	-3,415723	47	45	4,51	-3	24	56,60	Art. 76(5): 350 M line
OL35	48,199138	-3,084250	48	11	56,90	-3	5	3,30	Art. 76(5): 350 M line
OL36	48,202161	-3,082570	48	12	7,78	-3	4	57,25	Art. 76(5): 350 M line
OL37	48,289051	-2,930817	48	17	20,58	-2	55	50,94	Art. 76(4)(a)(i): 1% Sediment Thickness
OL38	48,750568	-2,347258	48	45	2,05	-2	20	50,13	Art. 76(4)(a)(i): 1% Sediment Thickness
OL39	49,434750	-2,013248	49	26	5,10	-2	0	47,69	Art. 76(4)(a)(i): 1% Sediment Thickness
OL40	49,982426	-1,539175	49	58	56,73	-1	32	21,03	Art. 76(4)(a)(i): 1% Sediment Thickness
OL41	49,700268	-1,073034	49	42	0,96	-1	4	22,92	Art. 76(4)(a)(i): 1% Sediment Thickness
OL42	50,430958	-0,426509	50	25	51,45	0	-25	35,43	Art. 76(4)(a)(i): 1% Sediment Thickness
OL43	50,543964	-0,278753	50	32	38,27	0	-16	43,51	Art. 76(4)(a)(i): 1% Sediment Thickness

ECS Point	Longitude East	Latitude	Long E Deg.	Long E Min.	Long E Sec.	Lat Deg.	Lat Min.	Lat Sec.	Article 76 provision invoked
OL44	50,716095	0,705004	50	42	57,94	0	42	18,01	Art. 76(4)(a)(ii): FOS + 60M
OL45	51,219421	1,293256	51	13	9,92	1	17	35,72	Art. 76(4)(a)(i): 1% Sediment Thickness
OL46	52,074196	1,806946	52	4	27,11	1	48	25,01	Art. 76(4)(a)(ii): FOS + 60M
OL47	52,082390	1,808415	52	4	56,60	1	48	30,30	Art. 76(4)(a)(ii): FOS + 60M
OL48	52,090569	1,809952	52	5	26,05	1	48	35,83	Art. 76(4)(a)(ii): FOS + 60M
OL49	52,098740	1,811559	52	5	55,46	1	48	41,61	Art. 76(4)(a)(ii): FOS + 60M
OL98	52,471584	1,970696	52	28	17,70	1	58	14,50	Art. 76(4)(a)(ii): FOS + 60M
OL99	52,478405	1,975488	52	28	42,26	1	58	31,76	Art. 76(4)(a)(ii): FOS + 60M
OL100	52,485195	1,980339	52	29	6,70	1	58	49,22	Art. 76(4)(a)(ii): FOS + 60M
OL101	52,491940	1,985245	52	29	30,98	1	59	6,88	Art. 76(4)(a)(ii): FOS + 60M
OL102	52,498646	1,990210	52	29	55,12	1	59	24,75	Art. 76(4)(a)(ii): FOS + 60M
OL103	52,505306	1,995228	52	30	19,10	1	59	42,82	Art. 76(4)(a)(ii): FOS + 60M
OL104	52,511929	2,000304	52	30	42,94	2	0	1,09	Art. 76(4)(a)(ii): FOS + 60M
OL105	52,518509	2,005434	52	31	6,63	2	0	19,56	Art. 76(4)(a)(ii): FOS + 60M
OL106	52,525044	2,010620	52	31	30,16	2	0	38,23	Art. 76(4)(a)(ii): FOS + 60M
OL107	52,531532	2,015859	52	31	53,52	2	0	57,09	Art. 76(4)(a)(ii): FOS + 60M
OL108	52,537983	2,021154	52	32	16,74	2	1	16,15	Art. 76(4)(a)(ii): FOS + 60M
OL109	52,544392	2,026502	52	32	39,81	2	1	35,41	Art. 76(4)(a)(ii): FOS + 60M
OL110	52,550751	2,031904	52	33	2,70	2	1	54,85	Art. 76(4)(a)(ii): FOS + 60M
OL111	52,557068	2,037358	52	33	25,44	2	2	14,49	Art. 76(4)(a)(ii): FOS + 60M
OL112	52,563339	2,042864	52	33	48,02	2	2	34,31	Art. 76(4)(a)(ii): FOS + 60M
OL113	52,569565	2,048423	52	34	10,43	2	2	54,32	Art. 76(4)(a)(ii): FOS + 60M
OL114	52,575741	2,054035	52	34	32,67	2	3	14,53	Art. 76(4)(a)(ii): FOS + 60M
OL115	52,581871	2,059698	52	34	54,74	2	3	34,91	Art. 76(4)(a)(ii): FOS + 60M
OL116	52,587956	2,065413	52	35	16,64	2	3	55,49	Art. 76(4)(a)(ii): FOS + 60M
OL117	52,593994	2,071177	52	35	38,38	2	4	16,24	Art. 76(4)(a)(ii): FOS + 60M
OL118	52,599983	2,076993	52	35	59,94	2	4	37,18	Art. 76(4)(a)(ii): FOS + 60M
OL119	52,605923	2,082858	52	36	21,32	2	4	58,29	Art. 76(4)(a)(ii): FOS + 60M
OL120	52,611816	2,088773	52	36	42,54	2	5	19,58	Art. 76(4)(a)(ii): FOS + 60M
OL121	52,617661	2,094737	52	37	3,58	2	5	41,05	Art. 76(4)(a)(ii): FOS + 60M
OL122	52,623451	2,100750	52	37	24,42	2	6	2,70	Art. 76(4)(a)(ii): FOS + 60M
OL123	52,629196	2,106813	52	37	45,11	2	6	24,53	Art. 76(4)(a)(ii): FOS + 60M
OL124	52,634892	2,112921	52	38	5,61	2	6	46,51	Art. 76(4)(a)(ii): FOS + 60M
OL125	52,640533	2,119077	52	38	25,92	2	7	8,68	Art. 76(4)(a)(ii): FOS + 60M
OL126	52,646126	2,125281	52	38	46,05	2	7	31,01	Art. 76(4)(a)(ii): FOS + 60M
OL127	52,651665	2,131531	52	39	5,99	2	7	53,51	Art. 76(4)(a)(ii): FOS + 60M
OL128	52,657154	2,137828	52	39	25,75	2	8	16,18	Art. 76(4)(a)(ii): FOS + 60M
OL129	52,662590	2,144171	52	39	45,32	2	8	39,02	Art. 76(4)(a)(ii): FOS + 60M
OL130	53,367645	2,845146	53	22	3,52	2	50	42,52	Art. 76(4)(a)(ii): FOS + 60M
OL131	53,374062	2,850482	53	22	26,62	2	51	1,74	Art. 76(4)(a)(ii): FOS + 60M
OL132	53,380436	2,855873	53	22	49,57	2	51	21,14	Art. 76(4)(a)(ii): FOS + 60M
OL133	53,386761	2,861316	53	23	12,34	2	51	40,74	Art. 76(4)(a)(ii): FOS + 60M
OL134	53,393044	2,866813	53	23	34,96	2	52	0,53	Art. 76(4)(a)(ii): FOS + 60M
OL135	53,399284	2,872363	53	23	57,42	2	52	20,51	Art. 76(4)(a)(ii): FOS + 60M
OL136	53,405476	2,877964	53	24	19,71	2	52	40,67	Art. 76(4)(a)(ii): FOS + 60M
OL137	53,411621	2,883617	53	24	41,84	2	53	1,02	Art. 76(4)(a)(ii): FOS + 60M
OL138	53,417717	2,889322	53	25	3,78	2	53	21,56	Art. 76(4)(a)(ii): FOS + 60M
OL139	53,423771	2,895078	53	25	25,58	2	53	42,28	Art. 76(4)(a)(ii): FOS + 60M
OL140	53,429771	2,900883	53	25	47,18	2	54	3,18	Art. 76(4)(a)(ii): FOS + 60M

ECS Point	Longitude East	Latitude	Long E Deg.	Long E Min.	Long E Sec.	Lat Deg.	Lat Min.	Lat Sec.	Article 76 provision invoked
OL141	53,435726	2,906739	53	26	8,61	2	54	24,26	Art. 76(4)(a)(ii): FOS + 60M
OL142	53,441635	2,912645	53	26	29,89	2	54	45,52	Art. 76(4)(a)(ii): FOS + 60M
OL143	53,447491	2,918600	53	26	50,97	2	55	6,96	Art. 76(4)(a)(ii): FOS + 60M
OL144	53,453301	2,924604	53	27	11,88	2	55	28,57	Art. 76(4)(a)(ii): FOS + 60M
OL145	53,459053	2,930656	53	27	32,59	2	55	50,36	Art. 76(4)(a)(ii): FOS + 60M
OL146	53,464760	2,936754	53	27	53,14	2	56	12,32	Art. 76(4)(a)(ii): FOS + 60M
OL147	53,470417	2,942903	53	28	13,50	2	56	34,45	Art. 76(4)(a)(ii): FOS + 60M
OL148	53,476021	2,949097	53	28	33,67	2	56	56,75	Art. 76(4)(a)(ii): FOS + 60M
OL149	53,481579	2,955338	53	28	53,68	2	57	19,22	Art. 76(4)(a)(ii): FOS + 60M
OL150	53,487076	2,961625	53	29	13,47	2	57	41,85	Art. 76(4)(a)(ii): FOS + 60M
OL151	53,492527	2,967959	53	29	33,10	2	58	4,65	Art. 76(4)(a)(ii): FOS + 60M
OL152	53,497921	2,974337	53	29	52,52	2	58	27,61	Art. 76(4)(a)(ii): FOS + 60M
OL153	53,503269	2,980761	53	30	11,77	2	58	50,74	Art. 76(4)(a)(ii): FOS + 60M
OL154	53,508560	2,987228	53	30	30,82	2	59	14,02	Art. 76(4)(a)(ii): FOS + 60M
OL155	53,513794	2,993739	53	30	49,66	2	59	37,46	Art. 76(4)(a)(ii): FOS + 60M
OL156	53,518974	3,000296	53	31	8,31	3	0	1,06	Art. 76(4)(a)(ii): FOS + 60M
OL157	53,524105	3,006896	53	31	26,78	3	0	24,82	Art. 76(4)(a)(ii): FOS + 60M
OL158	53,529179	3,013538	53	31	45,04	3	0	48,74	Art. 76(4)(a)(ii): FOS + 60M
OL159	53,534195	3,020222	53	32	3,10	3	1	12,80	Art. 76(4)(a)(ii): FOS + 60M
OL160	53,539158	3,026947	53	32	20,97	3	1	37,01	Art. 76(4)(a)(ii): FOS + 60M
OL161	53,544064	3,033713	53	32	38,63	3	2	1,37	Art. 76(4)(a)(ii): FOS + 60M
OL162	53,548920	3,040522	53	32	56,11	3	2	25,88	Art. 76(4)(a)(ii): FOS + 60M
OL163	53,553711	3,047369	53	33	13,36	3	2	50,53	Art. 76(4)(a)(ii): FOS + 60M
OL164	53,558445	3,054257	53	33	30,40	3	3	15,33	Art. 76(4)(a)(ii): FOS + 60M
OL165	53,563129	3,061186	53	33	47,27	3	3	40,27	Art. 76(4)(a)(ii): FOS + 60M
OL166	53,567753	3,068153	53	34	3,91	3	4	5,35	Art. 76(4)(a)(ii): FOS + 60M
OL167	53,572315	3,075159	53	34	20,33	3	4	30,57	Art. 76(4)(a)(ii): FOS + 60M
OL168	53,576828	3,082202	53	34	36,58	3	4	55,93	Art. 76(4)(a)(ii): FOS + 60M
OL169	53,581272	3,089283	53	34	52,58	3	5	21,42	Art. 76(4)(a)(ii): FOS + 60M
OL170	53,585663	3,096400	53	35	8,39	3	5	47,04	Art. 76(4)(a)(ii): FOS + 60M
OL171	53,589993	3,103554	53	35	23,97	3	6	12,79	Art. 76(4)(a)(ii): FOS + 60M
OL172	53,594261	3,110743	53	35	39,34	3	6	38,67	Art. 76(4)(a)(ii): FOS + 60M
OL173	53,598476	3,117969	53	35	54,52	3	7	4,69	Art. 76(4)(a)(ii): FOS + 60M
OL174	54,145798	3,950133	54	8	44,87	3	57	0,48	Art. 76(4)(a)(ii): FOS + 60M
OL175	54,433037	4,227287	54	25	58,93	4	13	38,23	Art. 76(4)(a)(ii): FOS + 60M
OL176	54,439011	4,233127	54	26	20,44	4	13	59,26	Art. 76(4)(a)(ii): FOS + 60M
OL177	54,444939	4,239016	54	26	41,78	4	14	20,46	Art. 76(4)(a)(ii): FOS + 60M
OL178	54,450821	4,244955	54	27	2,96	4	14	41,84	Art. 76(4)(a)(ii): FOS + 60M
OL179	54,456650	4,250942	54	27	23,94	4	15	3,39	Art. 76(4)(a)(ii): FOS + 60M
OL180	54,462429	4,256978	54	27	44,74	4	15	25,12	Art. 76(4)(a)(ii): FOS + 60M
OL181	54,468163	4,263062	54	28	5,39	4	15	47,02	Art. 76(4)(a)(ii): FOS + 60M
OL182	54,473843	4,269195	54	28	25,83	4	16	9,10	Art. 76(4)(a)(ii): FOS + 60M
OL183	54,479473	4,275374	54	28	46,10	4	16	31,34	Art. 76(4)(a)(ii): FOS + 60M
OL184	54,485050	4,281599	54	29	6,18	4	16	53,76	Art. 76(4)(a)(ii): FOS + 60M
OL185	54,490574	4,287873	54	29	26,07	4	17	16,34	Art. 76(4)(a)(ii): FOS + 60M
OL186	54,496048	4,294192	54	29	45,77	4	17	39,09	Art. 76(4)(a)(ii): FOS + 60M
OL187	54,501473	4,300556	54	30	5,30	4	18	2,00	Art. 76(4)(a)(ii): FOS + 60M
OL188	54,506840	4,306965	54	30	24,62	4	18	25,07	Art. 76(4)(a)(ii): FOS + 60M
OL189	54,512157	4,313419	54	30	43,77	4	18	48,31	Art. 76(4)(a)(ii): FOS + 60M

ECS Point	Longitude East	Latitude	Long E Deg.	Long E Min.	Long E Sec.	Lat Deg.	Lat Min.	Lat Sec.	Article 76 provision invoked
OL190	54,517418	4,319919	54	31	2,70	4	19	11,71	Art. 76(4)(a)(ii): FOS + 60M
OL191	54,522625	4,326461	54	31	21,45	4	19	35,26	Art. 76(4)(a)(ii): FOS + 60M
OL192	54,527779	4,333046	54	31	40,00	4	19	58,97	Art. 76(4)(a)(ii): FOS + 60M
OL193	54,532875	4,339675	54	31	58,35	4	20	22,83	Art. 76(4)(a)(ii): FOS + 60M
OL194	54,537922	4,346345	54	32	16,52	4	20	46,84	Art. 76(4)(a)(ii): FOS + 60M
OL195	54,542912	4,353057	54	32	34,48	4	21	11,01	Art. 76(4)(a)(ii): FOS + 60M
OL196	54,547844	4,359812	54	32	52,24	4	21	35,32	Art. 76(4)(a)(ii): FOS + 60M
OL197	54,552715	4,366608	54	33	9,78	4	21	59,79	Art. 76(4)(a)(ii): FOS + 60M
OL198	54,557533	4,373443	54	33	27,12	4	22	24,39	Art. 76(4)(a)(ii): FOS + 60M
OL199	54,562302	4,380319	54	33	44,29	4	22	49,15	Art. 76(4)(a)(ii): FOS + 60M
OL200	54,567001	4,387235	54	34	1,20	4	23	14,05	Art. 76(4)(a)(ii): FOS + 60M
OL201	54,571652	4,394189	54	34	17,95	4	23	39,08	Art. 76(4)(a)(ii): FOS + 60M
OL202	54,576241	4,401182	54	34	34,47	4	24	4,25	Art. 76(4)(a)(ii): FOS + 60M
OL203	54,580772	4,408211	54	34	50,78	4	24	29,56	Art. 76(4)(a)(ii): FOS + 60M
OL204	54,585247	4,415279	54	35	6,89	4	24	55,00	Art. 76(4)(a)(ii): FOS + 60M
OL205	54,589665	4,422385	54	35	22,79	4	25	20,59	Art. 76(4)(a)(ii): FOS + 60M
OL206	54,594017	4,429526	54	35	38,46	4	25	46,29	Art. 76(4)(a)(ii): FOS + 60M
OL207	54,598312	4,436705	54	35	53,92	4	26	12,14	Art. 76(4)(a)(ii): FOS + 60M
OL208	54,602551	4,443920	54	36	9,18	4	26	38,11	Art. 76(4)(a)(ii): FOS + 60M
OL209	54,606728	4,451168	54	36	24,22	4	27	4,21	Art. 76(4)(a)(ii): FOS + 60M
OL210	54,610844	4,458452	54	36	39,04	4	27	30,43	Art. 76(4)(a)(ii): FOS + 60M
OL211	54,614903	4,465769	54	36	53,65	4	27	56,77	Art. 76(4)(a)(ii): FOS + 60M
OL212	54,618893	4,473121	54	37	8,01	4	28	23,23	Art. 76(4)(a)(ii): FOS + 60M
OL213	54,622829	4,480506	54	37	22,19	4	28	49,82	Art. 76(4)(a)(ii): FOS + 60M
OL214	54,626701	4,487923	54	37	36,12	4	29	16,52	Art. 76(4)(a)(ii): FOS + 60M
OL215	54,630512	4,495372	54	37	49,84	4	29	43,34	Art. 76(4)(a)(ii): FOS + 60M
OL216	54,970539	5,165201	54	58	13,94	5	9	54,72	Art. 76(4)(a)(ii): FOS + 60M
OL217	54,974304	5,172677	54	58	27,50	5	10	21,64	Art. 76(4)(a)(ii): FOS + 60M
OL218	54,978001	5,180183	54	58	40,80	5	10	48,66	Art. 76(4)(a)(ii): FOS + 60M
OL219	54,981644	5,187722	54	58	53,92	5	11	15,80	Art. 76(4)(a)(ii): FOS + 60M
OL220	54,985218	5,195290	54	59	6,78	5	11	43,04	Art. 76(4)(a)(ii): FOS + 60M
OL221	54,988731	5,202887	54	59	19,43	5	12	10,39	Art. 76(4)(a)(ii): FOS + 60M
OL222	54,992180	5,210515	54	59	31,85	5	12	37,85	Art. 76(4)(a)(ii): FOS + 60M
OL223	54,995567	5,218169	54	59	44,04	5	13	5,41	Art. 76(4)(a)(ii): FOS + 60M
OL224	54,998886	5,225852	54	59	55,99	5	13	33,07	Art. 76(4)(a)(ii): FOS + 60M
OL225	55,002148	5,233562	55	0	7,73	5	14	0,82	Art. 76(4)(a)(ii): FOS + 60M
OL226	55,005341	5,241300	55	0	19,23	5	14	28,68	Art. 76(4)(a)(ii): FOS + 60M
OL227	55,008472	5,249064	55	0	30,50	5	14	56,63	Art. 76(4)(a)(ii): FOS + 60M
OL228	55,011536	5,256852	55	0	41,53	5	15	24,67	Art. 76(4)(a)(ii): FOS + 60M
OL229	55,014534	5,264668	55	0	52,32	5	15	52,80	Art. 76(4)(a)(ii): FOS + 60M
OL230	55,017471	5,272508	55	1	2,90	5	16	21,03	Art. 76(4)(a)(ii): FOS + 60M
OL231	55,020344	5,280371	55	1	13,24	5	16	49,34	Art. 76(4)(a)(ii): FOS + 60M
OL232	55,023151	5,288258	55	1	23,35	5	17	17,73	Art. 76(4)(a)(ii): FOS + 60M
OL233	55,025890	5,296169	55	1	33,21	5	17	46,21	Art. 76(4)(a)(ii): FOS + 60M
OL234	55,028561	5,304102	55	1	42,82	5	18	14,77	Art. 76(4)(a)(ii): FOS + 60M
OL235	55,031166	5,312057	55	1	52,20	5	18	43,41	Art. 76(4)(a)(ii): FOS + 60M
OL236	55,033711	5,320034	55	2	1,36	5	19	12,12	Art. 76(4)(a)(ii): FOS + 60M
OL237	55,036182	5,328031	55	2	10,26	5	19	40,91	Art. 76(4)(a)(ii): FOS + 60M
OL238	55,038597	5,336049	55	2	18,95	5	20	9,78	Art. 76(4)(a)(ii): FOS + 60M

ECS Point	Longitude East	Latitude	Long E Deg.	Long E Min.	Long E Sec.	Lat Deg.	Lat Min.	Lat Sec.	Article 76 provision invoked
OL239	55,040936	5,344088	55	2	27,37	5	20	38,72	Art. 76(4)(a)(ii): FOS + 60M
OL240	55,043213	5,352145	55	2	35,57	5	21	7,72	Art. 76(4)(a)(ii): FOS + 60M
OL241	55,045418	5,360220	55	2	43,50	5	21	36,79	Art. 76(4)(a)(ii): FOS + 60M
OL242	55,047562	5,368315	55	2	51,22	5	22	5,93	Art. 76(4)(a)(ii): FOS + 60M
OL243	55,049637	5,376426	55	2	58,69	5	22	35,13	Art. 76(4)(a)(ii): FOS + 60M
OL244	55,051640	5,384555	55	3	5,90	5	23	4,40	Art. 76(4)(a)(ii): FOS + 60M
OL245	55,053581	5,392700	55	3	12,89	5	23	33,72	Art. 76(4)(a)(ii): FOS + 60M
OL246	55,055454	5,400861	55	3	19,64	5	24	3,10	Art. 76(4)(a)(ii): FOS + 60M
OL247	55,057255	5,409037	55	3	26,12	5	24	32,53	Art. 76(4)(a)(ii): FOS + 60M
OL248	55,058987	5,417228	55	3	32,35	5	25	2,02	Art. 76(4)(a)(ii): FOS + 60M
OL249	55,728966	6,164019	55	43	44,28	6	9	50,47	Art. 76(4)(a)(ii): FOS + 60M
OL250	55,736954	6,166506	55	44	13,03	6	9	59,42	Art. 76(4)(a)(ii): FOS + 60M
OL251	55,740046	6,167493	55	44	24,16	6	10	2,97	Art. 76(5): 350 M line
OL252	55,750556	6,185557	55	45	2,00	6	11	8,00	Art. 76(5): 350 M line
OL253	55,932501	6,507778	55	55	57,00	6	30	28,00	Art. 76(5): 350 M line
OL254	56,439806	7,365749	56	26	23,30	7	21	56,70	Art. 76(5): 350 M line
OL255	56,444473	7,373472	56	26	40,10	7	22	24,50	Art. 76(5): 350 M line
OL256	56,449140	7,381222	56	26	56,90	7	22	52,40	Art. 76(5): 350 M line
OL257	56,453807	7,389001	56	27	13,71	7	23	20,40	Art. 76(5): 350 M line
OL258	56,458447	7,396751	56	27	30,41	7	23	48,30	Art. 76(5): 350 M line
OL259	56,467694	7,412306	56	28	3,70	7	24	44,30	Art. 76(5): 350 M line
OL260	56,472307	7,420084	56	28	20,31	7	25	12,30	Art. 76(5): 350 M line
OL261	56,481470	7,435667	56	28	53,29	7	26	8,40	Art. 76(5): 350 M line
OL262	56,486057	7,443473	56	29	9,80	7	26	36,50	Art. 76(5): 350 M line
OL263	56,490610	7,451306	56	29	26,20	7	27	4,70	Art. 76(5): 350 M line
OL264	56,499692	7,466945	56	29	58,89	7	28	1,00	Art. 76(5): 350 M line
OL265	56,504220	7,474779	56	30	15,19	7	28	29,21	Art. 76(5): 350 M line
OL266	56,508721	7,482611	56	30	31,39	7	28	57,40	Art. 76(5): 350 M line
OL267	56,517721	7,498305	56	31	3,80	7	29	53,90	Art. 76(5): 350 M line
OL268	56,538999	7,535472	56	32	20,40	7	32	7,70	Art. 76(5): 350 M line
OL269	56,543499	7,543333	56	32	36,60	7	32	36,00	Art. 76(5): 350 M line
OL270	56,547973	7,551194	56	32	52,70	7	33	4,30	Art. 76(5): 350 M line
OL271	56,552447	7,559056	56	33	8,81	7	33	32,60	Art. 76(5): 350 M line
OL272	56,561389	7,574778	56	33	41,00	7	34	29,20	Art. 76(5): 350 M line
OL273	56,570251	7,590556	56	34	12,90	7	35	26,00	Art. 76(5): 350 M line
OL274	56,574666	7,598445	56	34	28,80	7	35	54,40	Art. 76(5): 350 M line
OL275	56,583474	7,614278	56	35	0,51	7	36	51,40	Art. 76(5): 350 M line
OL276	56,592197	7,630111	56	35	31,91	7	37	48,40	Art. 76(5): 350 M line
OL277	56,596553	7,638028	56	35	47,59	7	38	16,90	Art. 76(5): 350 M line
OL278	56,600915	7,645971	56	36	3,29	7	38	45,50	Art. 76(5): 350 M line
OL279	56,605249	7,653916	56	36	18,89	7	39	14,10	Art. 76(5): 350 M line
OL280	56,609556	7,661862	56	36	34,40	7	39	42,70	Art. 76(5): 350 M line
OL281	56,613859	7,669807	56	36	49,89	7	40	11,30	Art. 76(5): 350 M line
OL282	56,618167	7,677777	56	37	5,40	7	40	40,00	Art. 76(5): 350 M line
OL283	56,626723	7,693722	56	37	36,20	7	41	37,40	Art. 76(5): 350 M line
OL284	56,630972	7,701695	56	37	51,50	7	42	6,10	Art. 76(5): 350 M line
OL285	56,635222	7,709695	56	38	6,80	7	42	34,90	Art. 76(5): 350 M line
OL286	56,639470	7,717695	56	38	22,09	7	43	3,70	Art. 76(5): 350 M line
OL287	56,643692	7,725695	56	38	37,29	7	43	32,50	Art. 76(5): 350 M line

ECS Point	Longitude East	Latitude	Long E Deg.	Long E Min.	Long E Sec.	Lat Deg.	Lat Min.	Lat Sec.	Article 76 provision invoked
OL288	56,652109	7,741695	56	39	7,59	7	44	30,10	Art. 76(5): 350 M line
OL289	56,660473	7,757750	56	39	37,70	7	45	27,90	Art. 76(5): 350 M line
OL290	56,668778	7,773834	56	40	7,60	7	46	25,80	Art. 76(5): 350 M line
OL291	56,672915	7,781862	56	40	22,49	7	46	54,70	Art. 76(5): 350 M line
OL292	56,677029	7,789916	56	40	37,30	7	47	23,70	Art. 76(5): 350 M line
OL293	56,681139	7,797973	56	40	52,10	7	47	52,70	Art. 76(5): 350 M line
OL294	56,685249	7,806028	56	41	6,89	7	48	21,70	Art. 76(5): 350 M line
OL295	56,693419	7,822195	56	41	36,31	7	49	19,90	Art. 76(5): 350 M line
OL296	56,705582	7,846444	56	42	20,09	7	50	47,20	Art. 76(5): 350 M line
OL297	56,709611	7,854556	56	42	34,60	7	51	16,40	Art. 76(5): 350 M line
OL298	56,713613	7,862667	56	42	49,01	7	51	45,60	Art. 76(5): 350 M line
OL299	56,721612	7,878889	56	43	17,80	7	52	44,00	Art. 76(5): 350 M line
OL300	56,729553	7,895139	56	43	46,39	7	53	42,50	Art. 76(5): 350 M line
OL301	56,733502	7,903278	56	44	0,61	7	54	11,80	Art. 76(5): 350 M line
OL302	56,737445	7,911445	56	44	14,80	7	54	41,20	Art. 76(5): 350 M line
OL303	56,741362	7,919583	56	44	28,90	7	55	10,50	Art. 76(5): 350 M line
OL304	56,749195	7,935888	56	44	57,10	7	56	9,20	Art. 76(5): 350 M line
OL305	56,753084	7,944056	56	45	11,10	7	56	38,60	Art. 76(5): 350 M line
OL306	56,756970	7,952251	56	45	25,09	7	57	8,10	Art. 76(5): 350 M line
OL307	56,760833	7,960417	56	45	39,00	7	57	37,50	Art. 76(5): 350 M line
OL308	56,764695	7,968611	56	45	52,90	7	58	7,00	Art. 76(5): 350 M line
OL309	56,772363	7,985000	56	46	20,51	7	59	6,00	Art. 76(5): 350 M line
OL310	56,776167	7,993195	56	46	34,20	7	59	35,50	Art. 76(5): 350 M line
OL311	56,779971	8,001416	56	46	47,90	8	0	5,10	Art. 76(5): 350 M line
OL312	56,783749	8,009611	56	47	1,50	8	0	34,60	Art. 76(5): 350 M line
OL313	56,791304	8,026055	56	47	28,69	8	1	33,80	Art. 76(5): 350 M line
OL314	56,798804	8,042528	56	47	55,70	8	2	33,10	Art. 76(5): 350 M line
OL315	56,802529	8,050778	56	48	9,10	8	3	2,80	Art. 76(5): 350 M line
OL316	56,806252	8,059027	56	48	22,51	8	3	32,50	Art. 76(5): 350 M line
OL317	56,813640	8,075527	56	48	49,10	8	4	31,90	Art. 76(5): 350 M line
OL318	56,824640	8,100362	56	49	28,71	8	6	1,30	Art. 76(5): 350 M line
OL319	56,828279	8,108638	56	49	41,80	8	6	31,10	Art. 76(5): 350 M line
OL320	56,831916	8,116917	56	49	54,90	8	7	0,90	Art. 76(5): 350 M line
OL321	56,835528	8,125221	56	50	7,90	8	7	30,80	Art. 76(5): 350 M line
OL322	56,842723	8,141806	56	50	33,80	8	8	30,50	Art. 76(5): 350 M line
OL323	56,849860	8,158445	56	50	59,50	8	9	30,40	Art. 76(5): 350 M line
OL324	56,853418	8,166751	56	51	12,30	8	10	0,30	Art. 76(5): 350 M line
OL325	56,860474	8,183417	56	51	37,71	8	11	0,30	Art. 76(5): 350 M line
OL326	56,863973	8,191750	56	51	50,30	8	11	30,30	Art. 76(5): 350 M line
OL327	56,867472	8,200084	56	52	2,90	8	12	0,30	Art. 76(5): 350 M line
OL328	56,870971	8,208444	56	52	15,50	8	12	30,40	Art. 76(5): 350 M line
OL329	56,874442	8,216805	56	52	27,99	8	13	0,50	Art. 76(5): 350 M line
OL330	56,877915	8,225166	56	52	40,49	8	13	30,60	Art. 76(5): 350 M line
OL331	56,881359	8,233527	56	52	52,89	8	14	0,70	Art. 76(5): 350 M line
OL332	56,884805	8,241889	56	53	5,30	8	14	30,80	Art. 76(5): 350 M line
OL333	56,888223	8,250251	56	53	17,60	8	15	0,90	Art. 76(5): 350 M line
OL334	56,891641	8,258638	56	53	29,91	8	15	31,10	Art. 76(5): 350 M line
OL335	56,902390	8,285222	56	54	8,60	8	17	6,80	Art. 76(5): 350 M line
OL336	56,909113	8,302001	56	54	32,81	8	18	7,20	Art. 76(5): 350 M line

ECS Point	Longitude East	Latitude	Long E Deg.	Long E Min.	Long E Sec.	Lat Deg.	Lat Min.	Lat Sec.	Article 76 provision invoked
OL337	56,912473	8,310417	56	54	44,90	8	18	37,50	Art. 76(5): 350 M line
OL338	56,915806	8,318807	56	54	56,90	8	19	7,70	Art. 76(5): 350 M line
OL339	56,922445	8,335639	56	55	20,80	8	20	8,30	Art. 76(5): 350 M line
OL340	56,929002	8,352500	56	55	44,41	8	21	9,00	Art. 76(5): 350 M line
OL341	56,932276	8,360945	56	55	56,19	8	21	39,40	Art. 76(5): 350 M line
OL342	56,935528	8,369389	56	56	7,90	8	22	9,80	Art. 76(5): 350 M line
OL343	56,942027	8,386278	56	56	31,30	8	23	10,60	Art. 76(5): 350 M line
OL344	56,945248	8,394722	56	56	42,89	8	23	41,00	Art. 76(5): 350 M line
OL345	56,951639	8,411639	56	57	5,90	8	24	41,90	Art. 76(5): 350 M line
OL346	56,957973	8,428583	56	57	28,70	8	25	42,90	Art. 76(5): 350 M line
OL347	56,961139	8,437056	56	57	40,10	8	26	13,40	Art. 76(5): 350 M line
OL348	56,967418	8,454027	56	58	2,70	8	27	14,50	Art. 76(5): 350 M line
OL349	56,981221	8,491750	56	58	52,40	8	29	30,30	Art. 76(5): 350 M line
OL350	56,984307	8,500279	56	59	3,50	8	30	1,00	Art. 76(5): 350 M line
OL351	56,987361	8,508778	56	59	14,50	8	30	31,60	Art. 76(5): 350 M line
OL352	56,990415	8,517277	56	59	25,49	8	31	2,20	Art. 76(5): 350 M line
OL353	56,993474	8,525807	56	59	36,51	8	31	32,90	Art. 76(5): 350 M line
OL354	56,996501	8,534332	56	59	47,40	8	32	3,60	Art. 76(5): 350 M line
OL355	56,999529	8,542861	56	59	58,30	8	32	34,30	Art. 76(5): 350 M line
OL356	57,002529	8,551390	57	0	9,11	8	33	5,00	Art. 76(5): 350 M line
OL357	57,005530	8,559917	57	0	19,91	8	33	35,70	Art. 76(5): 350 M line
OL358	57,011472	8,577027	57	0	41,30	8	34	37,30	Art. 76(5): 350 M line
OL359	57,014418	8,585555	57	0	51,90	8	35	8,00	Art. 76(5): 350 M line
OL360	57,017360	8,594112	57	1	2,50	8	35	38,80	Art. 76(5): 350 M line
OL361	57,026110	8,619806	57	1	34,00	8	37	11,30	Art. 76(5): 350 M line
OL362	57,031859	8,636973	57	1	54,69	8	38	13,10	Art. 76(5): 350 M line
OL363	57,034721	8,645556	57	2	4,99	8	38	44,00	Art. 76(5): 350 M line
OL364	57,037582	8,654140	57	2	15,29	8	39	14,90	Art. 76(5): 350 M line
OL365	57,040415	8,662723	57	2	25,49	8	39	45,80	Art. 76(5): 350 M line
OL366	57,043223	8,671305	57	2	35,60	8	40	16,70	Art. 76(5): 350 M line
OL367	57,046030	8,679916	57	2	45,71	8	40	47,70	Art. 76(5): 350 M line
OL368	57,048833	8,688528	57	2	55,80	8	41	18,70	Art. 76(5): 350 M line
OL369	57,051613	8,697111	57	3	5,81	8	41	49,60	Art. 76(5): 350 M line
OL370	57,054389	8,705723	57	3	15,80	8	42	20,60	Art. 76(5): 350 M line
OL371	57,059891	8,722973	57	3	35,61	8	43	22,70	Art. 76(5): 350 M line
OL372	57,062613	8,731584	57	3	45,41	8	43	53,70	Art. 76(5): 350 M line
OL373	57,065335	8,740222	57	3	55,20	8	44	24,80	Art. 76(5): 350 M line
OL374	57,068030	8,748861	57	4	4,91	8	44	55,90	Art. 76(5): 350 M line
OL375	57,073415	8,766140	57	4	24,29	8	45	58,10	Art. 76(5): 350 M line
OL376	57,078724	8,783416	57	4	43,41	8	47	0,30	Art. 76(5): 350 M line
OL377	57,081361	8,792084	57	4	52,90	8	47	31,50	Art. 76(5): 350 M line
OL378	57,083970	8,800723	57	5	2,29	8	48	2,60	Art. 76(5): 350 M line
OL379	57,086584	8,809388	57	5	11,70	8	48	33,80	Art. 76(5): 350 M line
OL380	57,089194	8,818056	57	5	21,10	8	49	5,00	Art. 76(5): 350 M line
OL381	57,091777	8,826723	57	5	30,40	8	49	36,20	Art. 76(5): 350 M line
OL382	57,094332	8,835389	57	5	39,59	8	50	7,40	Art. 76(5): 350 M line
OL383	57,099444	8,852750	57	5	58,00	8	51	9,90	Art. 76(5): 350 M line
OL384	57,104501	8,870112	57	6	16,20	8	52	12,40	Art. 76(5): 350 M line
OL385	57,109500	8,887500	57	6	34,20	8	53	15,00	Art. 76(5): 350 M line

ECS Point	Longitude East	Latitude	Long E Deg.	Long E Min.	Long E Sec.	Lat Deg.	Lat Min.	Lat Sec.	Article 76 provision invoked
OL386	57,114446	8,904917	57	6	52,01	8	54	17,70	Art. 76(5): 350 M line
OL387	57,116889	8,913612	57	7	0,80	8	54	49,00	Art. 76(5): 350 M line
OL388	57,119333	8,922334	57	7	9,60	8	55	20,40	Art. 76(5): 350 M line
OL389	57,124166	8,939750	57	7	27,00	8	56	23,10	Art. 76(5): 350 M line
OL390	57,126555	8,948472	57	7	35,60	8	56	54,50	Art. 76(5): 350 M line
OL391	57,128945	8,957194	57	7	44,20	8	57	25,90	Art. 76(5): 350 M line
OL392	57,133665	8,974666	57	8	1,19	8	58	28,80	Art. 76(5): 350 M line
OL393	57,136028	8,983417	57	8	9,70	8	59	0,30	Art. 76(5): 350 M line
OL394	57,140667	9,000889	57	8	26,40	9	0	3,20	Art. 76(5): 350 M line
OL395	57,142971	9,009639	57	8	34,70	9	0	34,70	Art. 76(5): 350 M line
OL396	57,149808	9,035889	57	8	59,31	9	2	9,20	Art. 76(5): 350 M line
OL397	57,152054	9,044666	57	9	7,39	9	2	40,80	Art. 76(5): 350 M line
OL398	57,154277	9,053416	57	9	15,40	9	3	12,30	Art. 76(5): 350 M line
OL399	57,158724	9,070944	57	9	31,41	9	4	15,40	Art. 76(5): 350 M line
OL400	57,163112	9,088500	57	9	47,20	9	5	18,60	Art. 76(5): 350 M line
OL401	57,165277	9,097277	57	9	55,00	9	5	50,20	Art. 76(5): 350 M line
OL402	57,169584	9,114862	57	10	10,50	9	6	53,50	Art. 76(5): 350 M line
OL403	57,171695	9,123639	57	10	18,10	9	7	25,10	Art. 76(5): 350 M line
OL404	57,173806	9,132444	57	10	25,70	9	7	56,80	Art. 76(5): 350 M line
OL405	57,175918	9,141251	57	10	33,30	9	8	28,50	Art. 76(5): 350 M line
OL406	57,178002	9,150028	57	10	40,81	9	9	0,10	Art. 76(5): 350 M line
OL407	57,180085	9,158834	57	10	48,31	9	9	31,80	Art. 76(5): 350 M line
OL408	57,184196	9,176444	57	11	3,10	9	10	35,20	Art. 76(5): 350 M line
OL409	57,188252	9,194083	57	11	17,71	9	11	38,70	Art. 76(5): 350 M line
OL410	57,190250	9,202890	57	11	24,90	9	12	10,40	Art. 76(5): 350 M line
OL411	57,192249	9,211722	57	11	32,09	9	12	42,20	Art. 76(5): 350 M line
OL412	57,196192	9,229362	57	11	46,29	9	13	45,70	Art. 76(5): 350 M line
OL413	57,200082	9,247028	57	12	0,30	9	14	49,30	Art. 76(5): 350 M line
OL414	57,202027	9,255861	57	12	7,30	9	15	21,10	Art. 76(5): 350 M line
OL415	57,205831	9,273556	57	12	20,99	9	16	24,80	Art. 76(5): 350 M line
OL416	57,207722	9,282389	57	12	27,80	9	16	56,60	Art. 76(5): 350 M line
OL417	57,211446	9,300111	57	12	41,21	9	18	0,40	Art. 76(5): 350 M line
OL418	57,213278	9,308945	57	12	47,80	9	18	32,20	Art. 76(5): 350 M line
OL419	57,215111	9,317804	57	12	54,40	9	19	4,10	Art. 76(5): 350 M line
OL420	57,216943	9,326667	57	13	0,99	9	19	36,00	Art. 76(5): 350 M line
OL421	57,218749	9,335528	57	13	7,50	9	20	7,90	Art. 76(5): 350 M line
OL422	57,222306	9,353250	57	13	20,30	9	21	11,70	Art. 76(5): 350 M line
OL423	57,224085	9,362140	57	13	26,71	9	21	43,70	Art. 76(5): 350 M line
OL424	57,227557	9,379889	57	13	39,21	9	22	47,60	Art. 76(5): 350 M line
OL425	57,229277	9,388749	57	13	45,40	9	23	19,50	Art. 76(5): 350 M line
OL426	57,232668	9,406529	57	13	57,61	9	24	23,50	Art. 76(5): 350 M line
OL427	57,234362	9,415418	57	14	3,70	9	24	55,50	Art. 76(5): 350 M line
OL428	57,236028	9,424305	57	14	9,70	9	25	27,50	Art. 76(5): 350 M line
OL429	57,237695	9,433195	57	14	15,70	9	25	59,50	Art. 76(5): 350 M line
OL430	57,239334	9,442083	57	14	21,60	9	26	31,50	Art. 76(5): 350 M line
OL431	57,240946	9,450972	57	14	27,41	9	27	3,50	Art. 76(5): 350 M line
OL432	57,244167	9,468778	57	14	39,00	9	28	7,60	Art. 76(5): 350 M line
OL433	57,245748	9,477666	57	14	44,69	9	28	39,60	Art. 76(5): 350 M line
OL434	57,247306	9,486584	57	14	50,30	9	29	11,70	Art. 76(5): 350 M line

ECS Point	Longitude East	Latitude	Long E Deg.	Long E Min.	Long E Sec.	Lat Deg.	Lat Min.	Lat Sec.	Article 76 provision invoked
OL435	57,248861	9,495500	57	14	55,90	9	29	43,80	Art. 76(5): 350 M line
OL436	57,250415	9,504417	57	15	1,49	9	30	15,90	Art. 76(5): 350 M line
OL437	57,251947	9,513306	57	15	7,01	9	30	47,90	Art. 76(5): 350 M line
OL438	57,253473	9,522222	57	15	12,50	9	31	20,00	Art. 76(5): 350 M line
OL439	57,254974	9,531139	57	15	17,90	9	31	52,10	Art. 76(5): 350 M line
OL440	57,257942	9,549000	57	15	28,59	9	32	56,40	Art. 76(5): 350 M line
OL441	57,259389	9,557917	57	15	33,80	9	33	28,50	Art. 76(5): 350 M line
OL442	57,260835	9,566834	57	15	39,01	9	34	0,60	Art. 76(5): 350 M line
OL443	57,262277	9,575778	57	15	44,20	9	34	32,80	Art. 76(5): 350 M line
OL444	57,263696	9,584694	57	15	49,31	9	35	4,90	Art. 76(5): 350 M line
OL445	57,265111	9,593639	57	15	54,40	9	35	37,10	Art. 76(5): 350 M line
OL446	57,266499	9,602555	57	15	59,40	9	36	9,20	Art. 76(5): 350 M line
OL447	57,269248	9,620444	57	16	9,29	9	37	13,60	Art. 76(5): 350 M line
OL448	57,270581	9,629390	57	16	14,09	9	37	45,80	Art. 76(5): 350 M line
OL449	57,271916	9,638334	57	16	18,90	9	38	18,00	Art. 76(5): 350 M line
OL450	57,273250	9,647278	57	16	23,70	9	38	50,20	Art. 76(5): 350 M line
OL451	57,274557	9,656222	57	16	28,41	9	39	22,40	Art. 76(5): 350 M line
OL452	57,275859	9,665166	57	16	33,09	9	39	54,60	Art. 76(5): 350 M line
OL453	57,277140	9,674111	57	16	37,70	9	40	26,80	Art. 76(5): 350 M line
OL454	57,278415	9,683084	57	16	42,29	9	40	59,10	Art. 76(5): 350 M line
OL455	57,279668	9,692027	57	16	46,80	9	41	31,30	Art. 76(5): 350 M line
OL456	57,280917	9,700973	57	16	51,30	9	42	3,50	Art. 76(5): 350 M line
OL457	57,282139	9,709944	57	16	55,70	9	42	35,80	Art. 76(5): 350 M line
OL458	57,284555	9,727862	57	17	4,40	9	43	40,30	Art. 76(5): 350 M line
OL459	57,286918	9,745806	57	17	12,90	9	44	44,90	Art. 76(5): 350 M line
OL460	57,289195	9,763722	57	17	21,10	9	45	49,40	Art. 76(5): 350 M line
OL461	57,290331	9,772694	57	17	25,19	9	46	21,70	Art. 76(5): 350 M line
OL462	57,291445	9,781667	57	17	29,20	9	46	54,00	Art. 76(5): 350 M line
OL463	57,292555	9,790639	57	17	33,20	9	47	26,30	Art. 76(5): 350 M line
OL464	57,294724	9,808611	57	17	41,01	9	48	31,00	Art. 76(5): 350 M line
OL465	57,295779	9,817583	57	17	44,81	9	49	3,30	Art. 76(5): 350 M line
OL466	57,296835	9,826555	57	17	48,61	9	49	35,60	Art. 76(5): 350 M line
OL467	57,298887	9,844528	57	17	55,99	9	50	40,30	Art. 76(5): 350 M line
OL468	57,300891	9,862500	57	18	3,21	9	51	45,00	Art. 76(5): 350 M line
OL469	57,302831	9,880472	57	18	10,19	9	52	49,70	Art. 76(5): 350 M line
OL470	57,303779	9,889472	57	18	13,60	9	53	22,10	Art. 76(5): 350 M line
OL471	57,304722	9,898472	57	18	17,00	9	53	54,50	Art. 76(5): 350 M line
OL472	57,305639	9,907473	57	18	20,30	9	54	26,90	Art. 76(5): 350 M line
OL473	57,307444	9,925444	57	18	26,80	9	55	31,60	Art. 76(5): 350 M line
OL474	57,309196	9,943445	57	18	33,10	9	56	36,40	Art. 76(5): 350 M line
OL475	57,310889	9,961445	57	18	39,20	9	57	41,20	Art. 76(5): 350 M line
OL476	57,312502	9,979472	57	18	45,01	9	58	46,10	Art. 76(5): 350 M line
OL477	57,313306	9,988472	57	18	47,90	9	59	18,50	Art. 76(5): 350 M line
OL478	57,314082	9,997473	57	18	50,70	9	59	50,90	Art. 76(5): 350 M line
OL479	57,314860	10,006500	57	18	53,49	10	0	23,40	Art. 76(5): 350 M line
OL480	57,315610	10,015500	57	18	56,20	10	0	55,80	Art. 76(5): 350 M line
OL481	57,316360	10,024500	57	18	58,89	10	1	28,20	Art. 76(5): 350 M line
OL482	57,317806	10,042527	57	19	4,10	10	2	33,10	Art. 76(5): 350 M line
OL483	57,319194	10,060556	57	19	9,10	10	3	38,00	Art. 76(5): 350 M line

ECS Point	Longitude East	Latitude	Long E Deg.	Long E Min.	Long E Sec.	Lat Deg.	Lat Min.	Lat Sec.	Article 76 provision invoked
OL484	57,319864	10,069584	57	19	11,51	10	4	10,50	Art. 76(5): 350 M line
OL485	57,320528	10,078611	57	19	13,90	10	4	43,00	Art. 76(5): 350 M line
OL486	57,321166	10,087610	57	19	16,20	10	5	15,40	Art. 76(5): 350 M line
OL487	57,322415	10,105667	57	19	20,69	10	6	20,40	Art. 76(5): 350 M line
OL488	57,322998	10,114666	57	19	22,79	10	6	52,80	Art. 76(5): 350 M line
OL489	57,323583	10,123695	57	19	24,90	10	7	25,30	Art. 76(5): 350 M line
OL490	57,324167	10,132722	57	19	27,00	10	7	57,80	Art. 76(5): 350 M line
OL491	57,324723	10,141749	57	19	29,00	10	8	30,30	Art. 76(5): 350 M line
OL492	57,325276	10,150778	57	19	30,99	10	9	2,80	Art. 76(5): 350 M line
OL493	57,325806	10,159806	57	19	32,90	10	9	35,30	Art. 76(5): 350 M line
OL494	57,326331	10,168834	57	19	34,79	10	10	7,80	Art. 76(5): 350 M line
OL495	57,326834	10,177861	57	19	36,60	10	10	40,30	Art. 76(5): 350 M line
OL496	57,327333	10,186889	57	19	38,40	10	11	12,80	Art. 76(5): 350 M line
OL497	57,327805	10,195917	57	19	40,10	10	11	45,30	Art. 76(5): 350 M line
OL498	57,328249	10,204945	57	19	41,70	10	12	17,80	Art. 76(5): 350 M line
OL499	57,328694	10,213972	57	19	43,30	10	12	50,30	Art. 76(5): 350 M line
OL500	57,329139	10,223000	57	19	44,90	10	13	22,80	Art. 76(5): 350 M line
OL501	57,329974	10,241055	57	19	47,91	10	14	27,80	Art. 76(5): 350 M line
OL502	57,330751	10,259112	57	19	50,70	10	15	32,80	Art. 76(5): 350 M line
OL503	57,331110	10,268167	57	19	52,00	10	16	5,40	Art. 76(5): 350 M line
OL504	57,331780	10,286223	57	19	54,41	10	17	10,40	Art. 76(5): 350 M line
OL505	57,332112	10,295250	57	19	55,60	10	17	42,90	Art. 76(5): 350 M line
OL506	57,332723	10,313333	57	19	57,80	10	18	48,00	Art. 76(5): 350 M line
OL507	57,333001	10,322361	57	19	58,80	10	19	20,50	Art. 76(5): 350 M line
OL508	57,333527	10,340445	57	20	0,70	10	20	25,60	Art. 76(5): 350 M line
OL509	57,333751	10,349472	57	20	1,50	10	20	58,10	Art. 76(5): 350 M line
OL510	57,334196	10,367555	57	20	3,11	10	22	3,20	Art. 76(5): 350 M line
OL511	57,334389	10,376583	57	20	3,80	10	22	35,70	Art. 76(5): 350 M line
OL512	57,334722	10,394667	57	20	5,00	10	23	40,80	Art. 76(5): 350 M line
OL513	57,334888	10,403722	57	20	5,60	10	24	13,40	Art. 76(5): 350 M line
OL514	57,335166	10,421778	57	20	6,60	10	25	18,40	Art. 76(5): 350 M line
OL515	57,335279	10,430834	57	20	7,00	10	25	51,00	Art. 76(5): 350 M line
OL516	57,335530	10,457946	57	20	7,91	10	27	28,61	Art. 76(5): 350 M line
OL517	57,335584	10,467000	57	20	8,10	10	28	1,20	Art. 76(5): 350 M line
OL518	57,335611	10,476028	57	20	8,20	10	28	33,70	Art. 76(5): 350 M line
OL519	57,335665	10,494111	57	20	8,39	10	29	38,80	Art. 76(5): 350 M line
OL520	57,335665	10,503167	57	20	8,39	10	30	11,40	Art. 76(5): 350 M line
OL521	57,335584	10,530278	57	20	8,10	10	31	49,00	Art. 76(5): 350 M line
OL522	57,335530	10,539306	57	20	7,91	10	32	21,50	Art. 76(5): 350 M line
OL523	57,335445	10,548362	57	20	7,60	10	32	54,10	Art. 76(5): 350 M line
OL524	57,335360	10,557389	57	20	7,30	10	33	26,60	Art. 76(5): 350 M line
OL525	57,335252	10,566444	57	20	6,91	10	33	59,20	Art. 76(5): 350 M line
OL526	57,335027	10,584529	57	20	6,10	10	35	4,30	Art. 76(5): 350 M line
OL527	57,334888	10,593557	57	20	5,60	10	35	36,80	Art. 76(5): 350 M line
OL528	57,334555	10,611640	57	20	4,40	10	36	41,90	Art. 76(5): 350 M line
OL529	57,334362	10,620668	57	20	3,70	10	37	14,40	Art. 76(5): 350 M line
OL530	57,333971	10,638749	57	20	2,30	10	38	19,50	Art. 76(5): 350 M line
OL531	57,333751	10,647779	57	20	1,50	10	38	52,00	Art. 76(5): 350 M line
OL532	57,333270	10,665681	57	19	59,77	10	39	56,45	Art. 76(5): 350 M line

