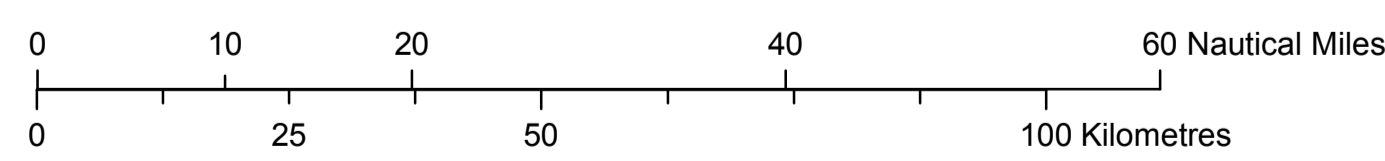
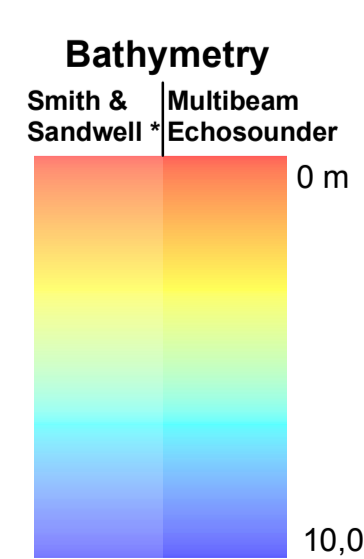


## Tuvalu - France - New Zealand (Tokelau) Continental Shelf beyond 200 Nautical Miles

SCALE 1:750,000  
World Mercator Projection  
WGS84  
Central Meridian: 180°



- Continental Shelf beyond 200M
- Light Shading
- Outer Limit of the Continental Shelf
- Kiribati EEZ
- 200M
- Median Line
- Agreed Lines



Joint submission of the French Republic (in respect of the Territory of the Wallis and Futuna Islands), New Zealand (in respect of the non-self-governing Territory of Tokelau) and Tuvalu pursuant to Article 76, paragraph 8 of the United Nations Convention on the Law of the Sea

### NOTES

1. This map was created using ESRI ArcGIS 9.3 and GeocapAS (v. 6.x) GIS software with spatially corrected data referenced to the World Geodetic System 1984 Spheroid, Semimajor Axis: 6378137.000000, Semiminor Axis: 6356752.3142452, Inverse Flattening: 298.257224
  2. The background gridded bathymetry is derived from Smith and Sandwell<sup>\*</sup> (v.13.1), a public domain data set obtained from Scripps Institute of Oceanography (<http://topex.ucsd.edu/paparc/arcshp00/>)
- <sup>\*</sup>Smith, W. H. F., and D. T. Sandwell, Global seafloor topography from satellite altimetry and ship depth soundings, Science, v. 277, p. 1957-1962, 26 Sept., 1997

