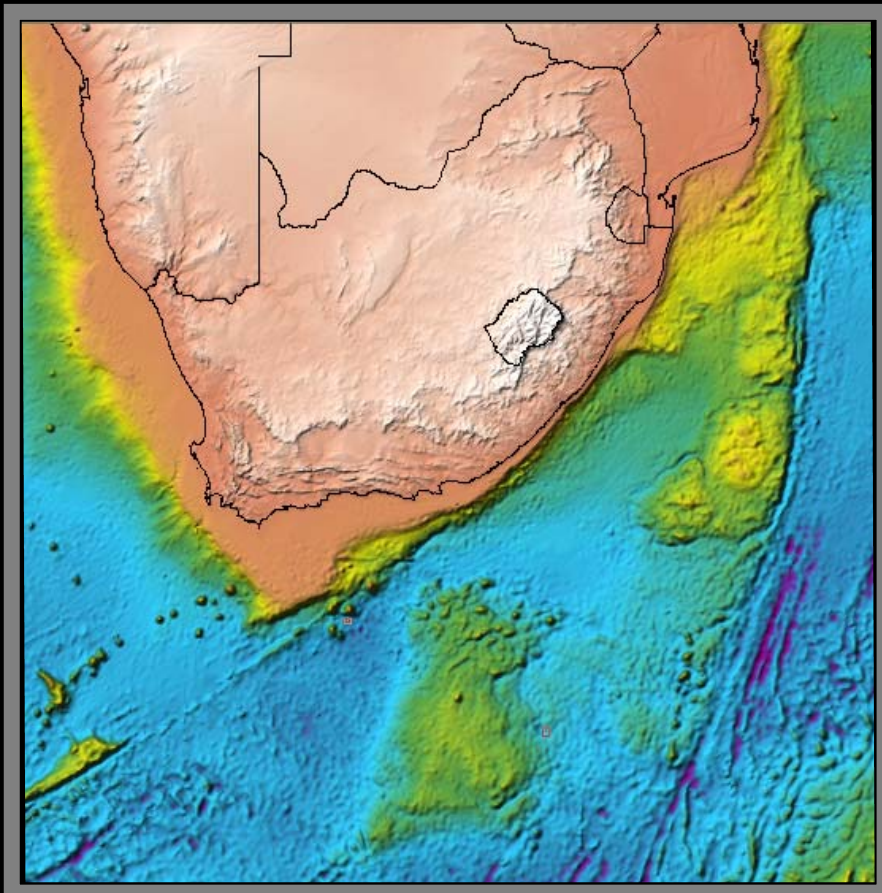




Republic of South Africa

Partial Submission to the Commission on the Limits of the Continental Shelf pursuant to Article 76, paragraph 8 of the United Nations Convention on the Law of the Sea 1982 in respect of the area of the South African Mainland



Part I

Executive Summary

Table of Contents

1. Introduction.....	1
2. Outer limit of the continental shelf in respect of the South African mainland	2
3. Specific provisions of Article 76 invoked to support the submission.....	2
4. Names of Commission Members who provided advice during the preparation of the submission.....	2
5. Absence of disputes	2
6. Natural prolongation of the South African landmass.....	3
7. Detailed description of the outer limit of the continental shelf of the South African mainland.....	3
8. State bodies responsible for the preparation of the continental shelf submission	4

Figure 1: Outer limits of the continental shelf of the Republic of South Africa beyond 200M.	4
---	---

Table 1: List of coordinates defining the outer limits of the continental shelf for the South African mainland. All coordinates relate to the WGS84 geodetic reference system.....	5
--	---

Appendix 1: Chart illustrating the outer limit of the continental Shelf for the South African mainland	
--	--

1. Introduction

The Republic of South Africa first formally proclaimed a continental shelf, as defined under the 1958 Geneva Convention on the Continental Shelf, under the Territorial Waters Act No. 87 of 1963, as amended by the Territorial Waters Amendment Act, No. 98 of 1977. This was subsequently modified, as defined by Article 76 of the 1982 United Nations Convention on the Law of the Sea (hereinafter 'UNCLOS' or the 'Convention') by the Maritime Zones Act, No. 15 of 1994.

The Republic of South Africa ratified UNCLOS on 23 December 1997 and is accordingly a party to the Convention. Pursuant to Article 76 and Article 4 of Annex II of the Convention, the Republic of South Africa hereby lodges with the Commission on the Limits of the Continental Shelf (hereinafter the 'Commission') its submission in support of the establishment of the continental shelf in the area of the South African Mainland that lies beyond 200 nautical miles from the baselines from which the breadth of the territorial sea is measured.

In 2002, the South African government directed the Minister of Minerals and Energy to take responsibility for the extension of the continental shelf. In terms of a ministerial directive issued in October 2002, the South African Agency for the Promotion of Petroleum Exploration and Exploitation (Petroleum Agency SA) was instructed to manage the project in collaboration and consultation with appropriate government departments and institutions. An advisory steering committee was accordingly established which included representatives of the following entities:

Department of Minerals and Energy

Department of Foreign Affairs

Department of Environmental Affairs

Department of Science and Technology

Department of Defence (represented by the SA Hydrographic Office)

Council for Geoscience

Department of Transport (represented by the SA Maritime Safety Authority)

Institute of Maritime Technology

2. Outer limit of the continental shelf in respect of the South African mainland

This partial submission covers the continental shelf off the west, east and southern coasts of the mainland of the territory of the Republic of South Africa. This submission does not preclude the Republic of South Africa from making any other submission(s), either concurrently with the current submission, or at a later date.

3. Specific provisions of Article 76 invoked to support the submission

The outer limits contained in this submission are based on the provisions of Articles 76.4 (a)(i) and 76.4 (a)(ii) and 76.4 (b) and 76.5 of UNCLOS.

4. Names of Commission Members who provided advice during the preparation of the submission

The Republic of South Africa was assisted in the preparation of this submission by Dr. Harald Brekke, member of the Commission on the Limits of the Continental Shelf (1997-present). No advice was provided by any other member of the Commission.

5. Absence of disputes

In accordance with paragraph 2(a) of Annex I to the Commission's Rules of Procedures, the Republic of South Africa wishes to inform the Commission that there are unresolved areas of continental shelf between it and other coastal States.

Portions of the current submission concern areas under dispute or, at least, areas under which there remain unresolved matters. In the east, South Africa has an unresolved maritime boundary with Mozambique and in the west, South Africa has an unresolved boundary with Namibia.

In the spirit of Article 76(10) of the Convention and applying Rule 46(2) of the Rules of Procedure of the Commission and Annex I of the Rules of Procedure, South Africa has agreed with Mozambique, by means of an Exchange of Letters, that their

respective submissions may be considered by the Commission on the understanding that this shall not prejudice future delimitation. At the same time, South Africa has transmitted a note verbale to Namibia informing the latter that it intends to make a submission for an extended continental shelf and that such submission will be without prejudice to the rights of the two countries regarding any future finalisation or delimitation of the boundary between the two countries.

On account of these communications the Government of the Republic of South Africa is satisfied and hereby assures the Commission, that the submission shall not prejudice the delimitation of the continental shelf between South Africa and its neighbours.

6. Natural prolongation of the South African landmass

The continental shelf of South Africa surrounds the southern end of the African continent on its west, south and east sides and extends significantly beyond 200M. It has a complex bathymetric morphology and is characterised by the presence of a number of large submarine depressions and elevations.

It is the view of South Africa that in geomorphological and geological terms the continental margin appurtenant to the continental landmass forms part of the same single continuous continental margin. This is evidenced by the morphological and geological continuity of the component highs and elevations of the South African continental margin which have been derived from a progressive series of related geological events.

7. Detailed description of the outer limit of the continental shelf of the South African mainland

The outer limits of the continental shelf of the South African Mainland consist of a series of straight lines, as provided for in the Convention being not more than 60M long, which join fixed points, defined by coordinates of latitude and longitude, generated from the combination of Hedberg Line and Gardiner Line beyond 200M

and the two sets of constraints. A summary of these fixed points is provided in Figure 1 and the coordinates of latitude and longitude of the fixed points comprising the outer limit of the continental shelf are given in Table 1. A large scale map is included with this executive summary (Appendix 1).

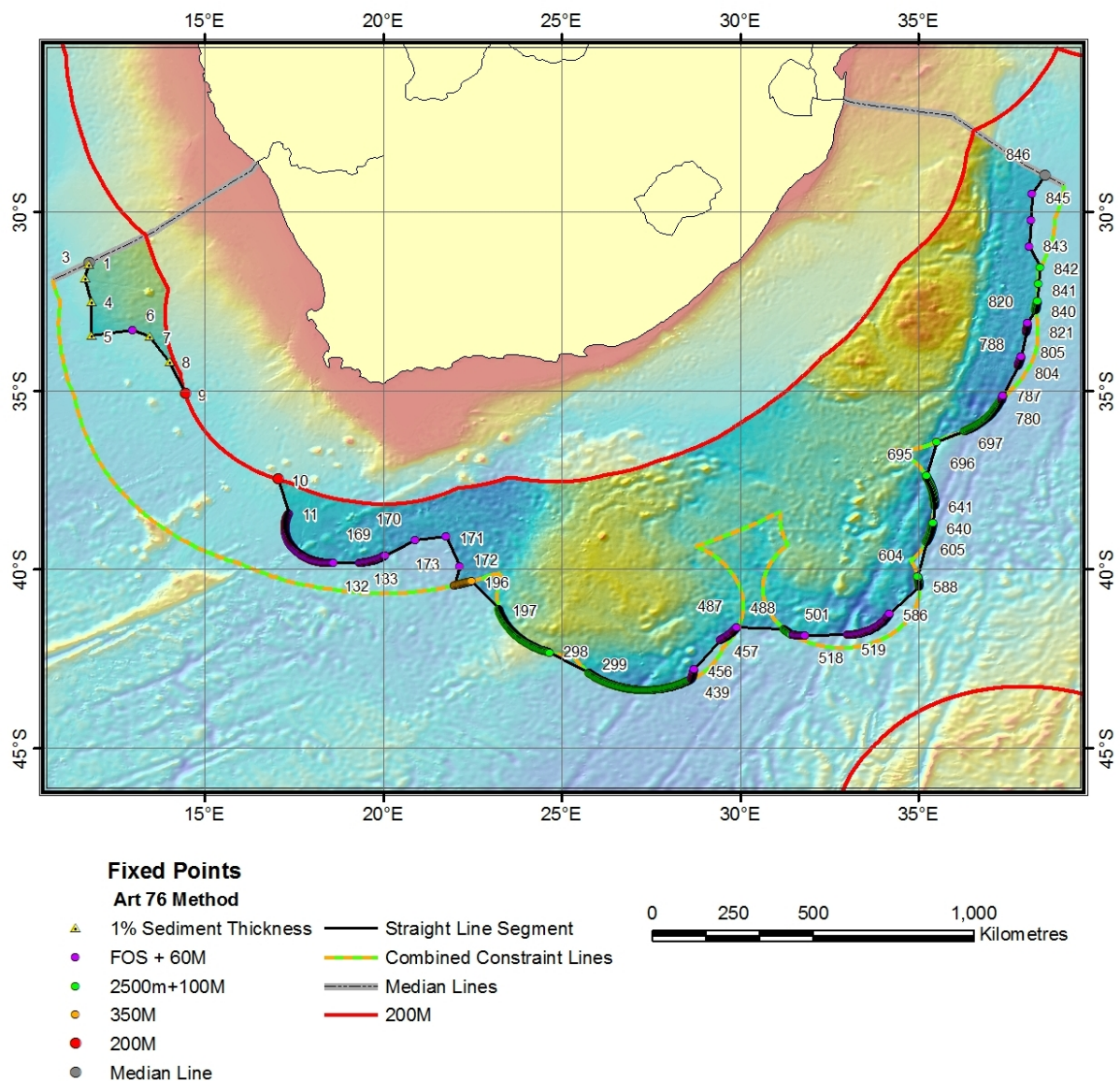


Figure 1: Outer limits of the continental shelf of the Republic of South Africa beyond 200M.

8. State bodies responsible for the preparation of the continental shelf submission

This submission, together with all maps, figures, enclosures, appendices and databases, was prepared by the Petroleum Agency SA.

Table 1: List of coordinates defining the outer limits of the continental shelf for the South African mainland. All coordinates relate to the WGS84 geodetic reference system.

FP	Longitude	Latitude	Distance to Last FP	Art 76 Method
1	11.7599373	-31.4209824	0.0	Median Line
2	11.7241640	-31.4726677	3.6	1% Sediment Thickness
3	11.6309481	-31.8631134	23.9	1% Sediment Thickness
4	11.8119659	-32.5076294	39.7	1% Sediment Thickness
5	11.8026276	-33.4722404	57.8	1% Sediment Thickness
6	12.9800425	-33.3211517	59.8	FOS+60M
7	13.4368181	-33.4946556	25.2	1% Sediment Thickness
8	13.9932508	-34.1887817	49.9	1% Sediment Thickness
9	14.4446001	-35.0933266	58.6	200M
10	17.0411129	-37.4865761	0.0	200M
11	17.3541012	-38.4445534	59.3	FOS+60M
12	17.3459702	-38.4599648	1.0	FOS+60M
13	17.3381615	-38.4754791	1.0	FOS+60M
14	17.3306808	-38.4910927	1.0	FOS+60M
15	17.3235302	-38.5068016	1.0	FOS+60M
16	17.3167095	-38.5226021	1.0	FOS+60M
17	17.3102245	-38.5384865	1.0	FOS+60M
18	17.3040714	-38.5544548	1.0	FOS+60M
19	17.2982559	-38.5705032	1.0	FOS+60M
20	17.2927799	-38.5866241	1.0	FOS+60M
21	17.2876453	-38.6028137	1.0	FOS+60M
22	17.2828522	-38.6190681	1.0	FOS+60M
23	17.2784023	-38.6353798	1.0	FOS+60M
24	17.2742996	-38.6517525	1.0	FOS+60M
25	17.2705421	-38.6681709	1.0	FOS+60M
26	17.2671337	-38.6846390	1.0	FOS+60M
27	17.2640724	-38.7011490	1.0	FOS+60M
28	17.2613640	-38.7176933	1.0	FOS+60M
29	17.2590046	-38.7342758	1.0	FOS+60M
30	17.2569981	-38.7508888	1.0	FOS+60M
31	17.2553444	-38.7675209	1.0	FOS+60M
32	17.2540436	-38.7841721	1.0	FOS+60M
33	17.2530975	-38.8008385	1.0	FOS+60M
34	17.2525063	-38.8175163	1.0	FOS+60M
35	17.2522697	-38.8341980	1.0	FOS+60M
36	17.2523899	-38.8508797	1.0	FOS+60M
37	17.2528648	-38.8675575	1.0	FOS+60M
38	17.2536945	-38.8842278	1.0	FOS+60M
39	17.2548809	-38.9008827	1.0	FOS+60M
40	17.2564240	-38.9175224	1.0	FOS+60M
41	17.2583218	-38.9341393	1.0	FOS+60M
42	17.2605743	-38.9507332	1.0	FOS+60M
43	17.2631817	-38.9672928	1.0	FOS+60M
44	17.2661438	-38.9838104	1.0	FOS+60M
45	17.2694607	-39.0002937	1.0	FOS+60M
46	17.2731285	-39.0167274	1.0	FOS+60M
47	17.2771511	-39.0331116	1.0	FOS+60M
48	17.2815228	-39.0494423	1.0	FOS+60M
49	17.2862473	-39.0657120	1.0	FOS+60M
50	17.2913208	-39.0819206	1.0	FOS+60M
51	17.2967415	-39.0980606	1.0	FOS+60M

52	17.3025093	-39.1141243	1.0	FOS+60M
53	17.3086224	-39.1301155	1.0	FOS+60M
54	17.3150806	-39.1460228	1.0	FOS+60M
55	17.3218803	-39.1618385	1.0	FOS+60M
56	17.3290215	-39.1775665	1.0	FOS+60M
57	17.3365021	-39.1932030	1.0	FOS+60M
58	17.3443203	-39.2087364	1.0	FOS+60M
59	17.3524723	-39.2241669	1.0	FOS+60M
60	17.3609581	-39.2394867	1.0	FOS+60M
61	17.3697739	-39.2546959	1.0	FOS+60M
62	17.3789177	-39.2697868	1.0	FOS+60M
63	17.3883896	-39.2847595	1.0	FOS+60M
64	17.3981838	-39.2996025	1.0	FOS+60M
65	17.4083004	-39.3143158	1.0	FOS+60M
66	17.4187336	-39.3288956	1.0	FOS+60M
67	17.4294834	-39.3433342	1.0	FOS+60M
68	17.4405460	-39.3576355	1.0	FOS+60M
69	17.4519196	-39.3717880	1.0	FOS+60M
70	17.4635983	-39.3857918	1.0	FOS+60M
71	17.4755802	-39.3996391	1.0	FOS+60M
72	17.4878654	-39.4133301	1.0	FOS+60M
73	17.5004463	-39.4268608	1.0	FOS+60M
74	17.5133228	-39.4402237	1.0	FOS+60M
75	17.5264874	-39.4534149	1.0	FOS+60M
76	17.5399418	-39.4664345	1.0	FOS+60M
77	17.5536766	-39.4792786	1.0	FOS+60M
78	17.5676937	-39.4919434	1.0	FOS+60M
79	17.5819836	-39.5044174	1.0	FOS+60M
80	17.5965462	-39.5167084	1.0	FOS+60M
81	17.6113758	-39.5288048	1.0	FOS+60M
82	17.6264706	-39.5407104	1.0	FOS+60M
83	17.6418228	-39.5524139	1.0	FOS+60M
84	17.6574306	-39.5639153	1.0	FOS+60M
85	17.6732864	-39.5752144	1.0	FOS+60M
86	17.6893902	-39.5862999	1.0	FOS+60M
87	17.7057381	-39.5971794	1.0	FOS+60M
88	17.7223206	-39.6078415	1.0	FOS+60M
89	17.7391338	-39.6182861	1.0	FOS+60M
90	17.7561760	-39.6285095	1.0	FOS+60M
91	17.7734432	-39.6385117	1.0	FOS+60M
92	17.7909279	-39.6482849	1.0	FOS+60M
93	17.8086243	-39.6578293	1.0	FOS+60M
94	17.8265305	-39.6671448	1.0	FOS+60M
95	17.8446388	-39.6762238	1.0	FOS+60M
96	17.8629456	-39.6850624	1.0	FOS+60M
97	17.8814449	-39.6936646	1.0	FOS+60M
98	17.9001312	-39.7020226	1.0	FOS+60M
99	17.9190006	-39.7101364	1.0	FOS+60M
100	17.9380455	-39.7180023	1.0	FOS+60M
101	17.9572620	-39.7256203	1.0	FOS+60M
102	17.9766464	-39.7329865	1.0	FOS+60M
103	17.9961872	-39.7400970	1.0	FOS+60M
104	18.0158863	-39.7469521	1.0	FOS+60M
105	18.0357342	-39.7535515	1.0	FOS+60M
106	18.0557232	-39.7598915	1.0	FOS+60M
107	18.0758495	-39.7659683	1.0	FOS+60M
108	18.0961094	-39.7717819	1.0	FOS+60M

109	18.1164951	-39.7773323	1.0	FOS+60M
110	18.1370010	-39.7826118	1.0	FOS+60M
111	18.1576233	-39.7876282	1.0	FOS+60M
112	18.1783504	-39.7923737	1.0	FOS+60M
113	18.1991806	-39.7968483	1.0	FOS+60M
114	18.2201099	-39.8010483	1.0	FOS+60M
115	18.2411270	-39.8049774	1.0	FOS+60M
116	18.2622280	-39.8086319	1.0	FOS+60M
117	18.2834091	-39.8120117	1.0	FOS+60M
118	18.3046608	-39.8151131	1.0	FOS+60M
119	18.3259792	-39.8179359	1.0	FOS+60M
120	18.3473549	-39.8204842	1.0	FOS+60M
121	18.3687859	-39.8227501	1.0	FOS+60M
122	18.3902645	-39.8247375	1.0	FOS+60M
123	18.4117851	-39.8264465	1.0	FOS+60M
124	18.4333401	-39.8278732	1.0	FOS+60M
125	18.4549236	-39.8290176	1.0	FOS+60M
126	18.4765282	-39.8298798	1.0	FOS+60M
127	18.4981499	-39.8304634	1.0	FOS+60M
128	18.5197811	-39.8307648	1.0	FOS+60M
129	18.5414162	-39.8307800	1.0	FOS+60M
130	18.5630474	-39.8305168	1.0	FOS+60M
131	18.5846691	-39.8299713	1.0	FOS+60M
132	18.6062775	-39.8291435	1.0	FOS+60M
133	19.3311329	-39.8161812	33.5	FOS+60M
134	19.3527393	-39.8154144	1.0	FOS+60M
135	19.3743286	-39.8143654	1.0	FOS+60M
136	19.3958874	-39.8130341	1.0	FOS+60M
137	19.4174156	-39.8114243	1.0	FOS+60M
138	19.4389038	-39.8095322	1.0	FOS+60M
139	19.4603462	-39.8073616	1.0	FOS+60M
140	19.4817390	-39.8049088	1.0	FOS+60M
141	19.5030727	-39.8021812	1.0	FOS+60M
142	19.5243454	-39.7991714	1.0	FOS+60M
143	19.5455456	-39.7958908	1.0	FOS+60M
144	19.5666714	-39.7923279	1.0	FOS+60M
145	19.5877151	-39.7884941	1.0	FOS+60M
146	19.6086693	-39.7843857	1.0	FOS+60M
147	19.6295280	-39.7800026	1.0	FOS+60M
148	19.6502876	-39.7753525	1.0	FOS+60M
149	19.6709442	-39.7704277	1.0	FOS+60M
150	19.6914845	-39.7652359	1.0	FOS+60M
151	19.7119064	-39.7597809	1.0	FOS+60M
152	19.7322063	-39.7540550	1.0	FOS+60M
153	19.7523766	-39.7480698	1.0	FOS+60M
154	19.7724113	-39.7418175	1.0	FOS+60M
155	19.7923031	-39.7353096	1.0	FOS+60M
156	19.8120480	-39.7285423	1.0	FOS+60M
157	19.8316402	-39.7215157	1.0	FOS+60M
158	19.8510761	-39.7142372	1.0	FOS+60M
159	19.8703461	-39.7067070	1.0	FOS+60M
160	19.8894482	-39.6989250	1.0	FOS+60M
161	19.9083710	-39.6908951	1.0	FOS+60M
162	19.9271183	-39.6826210	1.0	FOS+60M
163	19.9456787	-39.6741028	1.0	FOS+60M
164	19.9640465	-39.6653442	1.0	FOS+60M
165	19.9822197	-39.6563454	1.0	FOS+60M

166	20.0001907	-39.6471138	1.0	FOS+60M
167	20.0179558	-39.6376457	1.0	FOS+60M
168	20.0355091	-39.6279526	1.0	FOS+60M
169	20.0528469	-39.6180267	1.0	FOS+60M
170	20.8997402	-39.1764145	47.5	FOS+60M
171	21.7706337	-39.0911217	41.0	FOS+60M
172	22.1512108	-39.9232712	52.9	FOS+60M
173	21.9857979	-40.4578209	32.9	FOS+60M
174	22.0031166	-40.4539680	0.8	350M
175	22.0240593	-40.4492531	1.0	350M
176	22.0449791	-40.4444885	1.0	350M
177	22.0658798	-40.4396782	1.0	350M
178	22.0867577	-40.4348145	1.0	350M
179	22.1076164	-40.4299049	1.0	350M
180	22.1284542	-40.4249458	1.0	350M
181	22.1492691	-40.4199371	1.0	350M
182	22.1700630	-40.4148788	1.0	350M
183	22.1908340	-40.4097710	1.0	350M
184	22.2115822	-40.4046135	1.0	350M
185	22.2323093	-40.3994102	1.0	350M
186	22.2530117	-40.3941574	1.0	350M
187	22.2736950	-40.3888550	1.0	350M
188	22.2943535	-40.3835030	1.0	350M
189	22.3149872	-40.3781013	1.0	350M
190	22.3355980	-40.3726540	1.0	350M
191	22.3561859	-40.3671570	1.0	350M
192	22.3767490	-40.3616104	1.0	350M
193	22.3972893	-40.3560181	1.0	350M
194	22.4178047	-40.3503761	1.0	350M
195	22.4382954	-40.3446846	1.0	350M
196	22.4587612	-40.3389473	1.0	350M
197	23.2424030	-41.1306648	59.4	2500m+100M
198	23.2475224	-41.1468849	1.0	2500m+100M
199	23.2528591	-41.1630669	1.0	2500m+100M
200	23.2584114	-41.1792068	1.0	2500m+100M
201	23.2641811	-41.1953049	1.0	2500m+100M
202	23.2701664	-41.2113571	1.0	2500m+100M
203	23.2763672	-41.2273598	1.0	2500m+100M
204	23.2827797	-41.2433167	1.0	2500m+100M
205	23.2894096	-41.2592239	1.0	2500m+100M
206	23.2962513	-41.2750816	1.0	2500m+100M
207	23.3033085	-41.2908859	1.0	2500m+100M
208	23.3105755	-41.3066368	1.0	2500m+100M
209	23.3180580	-41.3223305	1.0	2500m+100M
210	23.3257484	-41.3379669	1.0	2500m+100M
211	23.3336525	-41.3535423	1.0	2500m+100M
212	23.3417645	-41.3690605	1.0	2500m+100M
213	23.3500862	-41.3845100	1.0	2500m+100M
214	23.3586178	-41.3998985	1.0	2500m+100M
215	23.3673553	-41.4152222	1.0	2500m+100M
216	23.3763027	-41.4304810	1.0	2500m+100M
217	23.3854542	-41.4456673	1.0	2500m+100M
218	23.3948135	-41.4607849	1.0	2500m+100M
219	23.4043751	-41.4758263	1.0	2500m+100M
220	23.4141426	-41.4907990	1.0	2500m+100M
221	23.4241123	-41.5056953	1.0	2500m+100M
222	23.4342861	-41.5205154	1.0	2500m+100M

223	23.4446602	-41.5352592	1.0	2500m+100M
224	23.4552326	-41.5499191	1.0	2500m+100M
225	23.4660053	-41.5644989	1.0	2500m+100M
226	23.4734306	-41.5743484	0.7	2500m+100M
227	23.4768639	-41.5790443	0.3	2500m+100M
228	23.4876842	-41.5936089	1.0	2500m+100M
229	23.4987011	-41.6080894	1.0	2500m+100M
230	23.5099144	-41.6224823	1.0	2500m+100M
231	23.5213261	-41.6367950	1.0	2500m+100M
232	23.5329342	-41.6510162	1.0	2500m+100M
233	23.5447350	-41.6651535	1.0	2500m+100M
234	23.5567265	-41.6791916	1.0	2500m+100M
235	23.5689106	-41.6931419	1.0	2500m+100M
236	23.5812855	-41.7070007	1.0	2500m+100M
237	23.5938511	-41.7207603	1.0	2500m+100M
238	23.6066055	-41.7344284	1.0	2500m+100M
239	23.6195469	-41.7479973	1.0	2500m+100M
240	23.6326733	-41.7614670	1.0	2500m+100M
241	23.6459827	-41.7748337	1.0	2500m+100M
242	23.6594791	-41.7881012	1.0	2500m+100M
243	23.6731567	-41.8012657	1.0	2500m+100M
244	23.6870136	-41.8143234	1.0	2500m+100M
245	23.7010517	-41.8272781	1.0	2500m+100M
246	23.7152653	-41.8401222	1.0	2500m+100M
247	23.7296562	-41.8528595	1.0	2500m+100M
248	23.7442245	-41.8654861	1.0	2500m+100M
249	23.7589645	-41.8779984	1.0	2500m+100M
250	23.7738800	-41.8904037	1.0	2500m+100M
251	23.7889633	-41.9026909	1.0	2500m+100M
252	23.8042164	-41.9148636	1.0	2500m+100M
253	23.8196392	-41.9269218	1.0	2500m+100M
254	23.8352261	-41.9388580	1.0	2500m+100M
255	23.8509789	-41.9506760	1.0	2500m+100M
256	23.8668957	-41.9623756	1.0	2500m+100M
257	23.8829708	-41.9739532	1.0	2500m+100M
258	23.8992100	-41.9854088	1.0	2500m+100M
259	23.9156094	-41.9967384	1.0	2500m+100M
260	23.9321613	-42.0079422	1.0	2500m+100M
261	23.9488697	-42.0190239	1.0	2500m+100M
262	23.9657326	-42.0299721	1.0	2500m+100M
263	23.9827480	-42.0407982	1.0	2500m+100M
264	23.9999104	-42.0514870	1.0	2500m+100M
265	24.0172234	-42.0620499	1.0	2500m+100M
266	24.0346832	-42.0724792	1.0	2500m+100M
267	24.0522881	-42.0827789	1.0	2500m+100M
268	24.0700340	-42.0929375	1.0	2500m+100M
269	24.0879211	-42.1029663	1.0	2500m+100M
270	24.1059475	-42.1128540	1.0	2500m+100M
271	24.1241131	-42.1226082	1.0	2500m+100M
272	24.1424141	-42.1322212	1.0	2500m+100M
273	24.1608486	-42.1416969	1.0	2500m+100M
274	24.1794147	-42.1510277	1.0	2500m+100M
275	24.1981106	-42.1602211	1.0	2500m+100M
276	24.2169323	-42.1692696	1.0	2500m+100M
277	24.2358818	-42.1781731	1.0	2500m+100M
278	24.2549553	-42.1869354	1.0	2500m+100M
279	24.2741489	-42.1955490	1.0	2500m+100M

280	24.2934666	-42.2040215	1.0	2500m+100M
281	24.3129005	-42.2123413	1.0	2500m+100M
282	24.3324509	-42.2205162	1.0	2500m+100M
283	24.3521156	-42.2285385	1.0	2500m+100M
284	24.3718910	-42.2364159	1.0	2500m+100M
285	24.3917770	-42.2441406	1.0	2500m+100M
286	24.4117699	-42.2517128	1.0	2500m+100M
287	24.4318695	-42.2591324	1.0	2500m+100M
288	24.4520702	-42.2663994	1.0	2500m+100M
289	24.4723740	-42.2735100	1.0	2500m+100M
290	24.4927750	-42.2804680	1.0	2500m+100M
291	24.5132771	-42.2872696	1.0	2500m+100M
292	24.5338707	-42.2939186	1.0	2500m+100M
293	24.5545578	-42.3004074	1.0	2500m+100M
294	24.5753345	-42.3067398	1.0	2500m+100M
295	24.5962029	-42.3129120	1.0	2500m+100M
296	24.6171551	-42.3189278	1.0	2500m+100M
297	24.6381931	-42.3247795	1.0	2500m+100M
298	24.6593113	-42.3304749	1.0	2500m+100M
299	25.7534752	-42.8922005	59.0	2500m+100M
300	25.7694130	-42.9040604	1.0	2500m+100M
301	25.7855186	-42.9157982	1.0	2500m+100M
302	25.8017864	-42.9274139	1.0	2500m+100M
303	25.8182201	-42.9389114	1.0	2500m+100M
304	25.8348160	-42.9502831	1.0	2500m+100M
305	25.8515682	-42.9615288	1.0	2500m+100M
306	25.8684807	-42.9726486	1.0	2500m+100M
307	25.8855495	-42.9836388	1.0	2500m+100M
308	25.9027748	-42.9945030	1.0	2500m+100M
309	25.9201508	-43.0052376	1.0	2500m+100M
310	25.9376812	-43.0158424	1.0	2500m+100M
311	25.9553604	-43.0263176	1.0	2500m+100M
312	25.9731865	-43.0366554	1.0	2500m+100M
313	25.9911575	-43.0468597	1.0	2500m+100M
314	26.0092735	-43.0569305	1.0	2500m+100M
315	26.0275307	-43.0668640	1.0	2500m+100M
316	26.0459309	-43.0766602	1.0	2500m+100M
317	26.0644684	-43.0863190	1.0	2500m+100M
318	26.0831413	-43.0958366	1.0	2500m+100M
319	26.1019497	-43.1052170	1.0	2500m+100M
320	26.1208916	-43.1144524	1.0	2500m+100M
321	26.1399632	-43.1235466	1.0	2500m+100M
322	26.1591644	-43.1324959	1.0	2500m+100M
323	26.1784916	-43.1413040	1.0	2500m+100M
324	26.1979427	-43.1499672	1.0	2500m+100M
325	26.2175198	-43.1584816	1.0	2500m+100M
326	26.2372150	-43.1668510	1.0	2500m+100M
327	26.2570286	-43.1750717	1.0	2500m+100M
328	26.2769585	-43.1831398	1.0	2500m+100M
329	26.2970047	-43.1910629	1.0	2500m+100M
330	26.3171616	-43.1988335	1.0	2500m+100M
331	26.3374310	-43.2064552	1.0	2500m+100M
332	26.3578072	-43.2139206	1.0	2500m+100M
333	26.3782883	-43.2212372	1.0	2500m+100M
334	26.3988762	-43.2283974	1.0	2500m+100M
335	26.4195633	-43.2354012	1.0	2500m+100M
336	26.4403496	-43.2422523	1.0	2500m+100M

337	26.4612350	-43.2489471	1.0	2500m+100M
338	26.4822121	-43.2554855	1.0	2500m+100M
339	26.5032845	-43.2618637	1.0	2500m+100M
340	26.5244465	-43.2680855	1.0	2500m+100M
341	26.5456982	-43.2741508	1.0	2500m+100M
342	26.5670357	-43.2800560	1.0	2500m+100M
343	26.5884552	-43.2857971	1.0	2500m+100M
344	26.5993443	-43.2886467	0.5	2500m+100M
345	26.5993443	-43.2886467	0.0	2500m+100M
346	26.6208858	-43.2941475	1.0	2500m+100M
347	26.6425056	-43.2994881	1.0	2500m+100M
348	26.6642017	-43.3046646	1.0	2500m+100M
349	26.6859722	-43.3096771	1.0	2500m+100M
350	26.7078133	-43.3145294	1.0	2500m+100M
351	26.7297230	-43.3192177	1.0	2500m+100M
352	26.7516975	-43.3237381	1.0	2500m+100M
353	26.7737370	-43.3280983	1.0	2500m+100M
354	26.7958393	-43.3322906	1.0	2500m+100M
355	26.8179989	-43.3363152	1.0	2500m+100M
356	26.8402157	-43.3401756	1.0	2500m+100M
357	26.8624897	-43.3438721	1.0	2500m+100M
358	26.8848133	-43.3473969	1.0	2500m+100M
359	26.9071865	-43.3507576	1.0	2500m+100M
360	26.9296074	-43.3539467	1.0	2500m+100M
361	26.9520721	-43.3569717	1.0	2500m+100M
362	26.9745808	-43.3598251	1.0	2500m+100M
363	26.9971313	-43.3625145	1.0	2500m+100M
364	27.0197163	-43.3650284	1.0	2500m+100M
365	27.0423374	-43.3673782	1.0	2500m+100M
366	27.0649929	-43.3695564	1.0	2500m+100M
367	27.0876770	-43.3715630	1.0	2500m+100M
368	27.1103897	-43.3734016	1.0	2500m+100M
369	27.1331272	-43.3750725	1.0	2500m+100M
370	27.1558876	-43.3765678	1.0	2500m+100M
371	27.1786671	-43.3778954	1.0	2500m+100M
372	27.2014656	-43.3790512	1.0	2500m+100M
373	27.2242794	-43.3800392	1.0	2500m+100M
374	27.2471066	-43.3808517	1.0	2500m+100M
375	27.2699432	-43.3814964	1.0	2500m+100M
376	27.2927895	-43.3819695	1.0	2500m+100M
377	27.3156395	-43.3822708	1.0	2500m+100M
378	27.3384933	-43.3824005	1.0	2500m+100M
379	27.3613472	-43.3823586	1.0	2500m+100M
380	27.3841991	-43.3821449	1.0	2500m+100M
381	27.4070473	-43.3817635	1.0	2500m+100M
382	27.4298897	-43.3812065	1.0	2500m+100M
383	27.4527225	-43.3804817	1.0	2500m+100M
384	27.4755440	-43.3795853	1.0	2500m+100M
385	27.4983501	-43.3785172	1.0	2500m+100M
386	27.5211411	-43.3772774	1.0	2500m+100M
387	27.5439110	-43.3758698	1.0	2500m+100M
388	27.5666599	-43.3742905	1.0	2500m+100M
389	27.5893860	-43.3725395	1.0	2500m+100M
390	27.6120853	-43.3706207	1.0	2500m+100M
391	27.6347561	-43.3685303	1.0	2500m+100M
392	27.6573944	-43.3662682	1.0	2500m+100M
393	27.6799984	-43.3638382	1.0	2500m+100M

394	27.7025681	-43.3612404	1.0	2500m+100M
395	27.7250957	-43.3584747	1.0	2500m+100M
396	27.7475834	-43.3555374	1.0	2500m+100M
397	27.7700272	-43.3524323	1.0	2500m+100M
398	27.7924252	-43.3491631	1.0	2500m+100M
399	27.8147755	-43.3457222	1.0	2500m+100M
400	27.8370743	-43.3421135	1.0	2500m+100M
401	27.8593197	-43.3383408	1.0	2500m+100M
402	27.8815098	-43.3344002	1.0	2500m+100M
403	27.9036427	-43.3302956	1.0	2500m+100M
404	27.9257145	-43.3260231	1.0	2500m+100M
405	27.9477234	-43.3215866	1.0	2500m+100M
406	27.9696674	-43.3169823	1.0	2500m+100M
407	27.9915447	-43.3122177	1.0	2500m+100M
408	28.0133514	-43.3072891	1.0	2500m+100M
409	28.0350857	-43.3021927	1.0	2500m+100M
410	28.0567474	-43.2969398	1.0	2500m+100M
411	28.0783291	-43.2915230	1.0	2500m+100M
412	28.0998325	-43.2859421	1.0	2500m+100M
413	28.1212559	-43.2802048	1.0	2500m+100M
414	28.1425934	-43.2743034	1.0	2500m+100M
415	28.1638470	-43.2682457	1.0	2500m+100M
416	28.1850128	-43.2620277	1.0	2500m+100M
417	28.2060871	-43.2556534	1.0	2500m+100M
418	28.2270699	-43.2491188	1.0	2500m+100M
419	28.2479553	-43.2424278	1.0	2500m+100M
420	28.2687454	-43.2355804	1.0	2500m+100M
421	28.2894363	-43.2285767	1.0	2500m+100M
422	28.3100243	-43.2214241	1.0	2500m+100M
423	28.3305073	-43.2141113	1.0	2500m+100M
424	28.3508854	-43.2066498	1.0	2500m+100M
425	28.3711548	-43.1990318	1.0	2500m+100M
426	28.3913155	-43.1912651	1.0	2500m+100M
427	28.4113636	-43.1833496	1.0	2500m+100M
428	28.4312973	-43.1752815	1.0	2500m+100M
429	28.4511147	-43.1670647	1.0	2500m+100M
430	28.4708138	-43.1586990	1.0	2500m+100M
431	28.4903908	-43.1501884	1.0	2500m+100M
432	28.5098476	-43.1415329	1.0	2500m+100M
433	28.5291786	-43.1327286	1.0	2500m+100M
434	28.5483837	-43.1237793	1.0	2500m+100M
435	28.5674572	-43.1146889	1.0	2500m+100M
436	28.5864029	-43.1054573	1.0	2500m+100M
437	28.6052132	-43.0960808	1.0	2500m+100M
438	28.6238899	-43.0865669	1.0	2500m+100M
439	28.6285267	-43.0841522	0.3	2500m+100M
440	28.6372356	-43.0641975	1.3	FOS+60M
441	28.6437244	-43.0482216	1.0	FOS+60M
442	28.6498451	-43.0321655	1.0	FOS+60M
443	28.6555977	-43.0160370	1.0	FOS+60M
444	28.6609802	-42.9998436	1.0	FOS+60M
445	28.6659927	-42.9835815	1.0	FOS+60M
446	28.6706314	-42.9672623	1.0	FOS+60M
447	28.6748981	-42.9508858	1.0	FOS+60M
448	28.6787910	-42.9344635	1.0	FOS+60M
449	28.6823082	-42.9179955	1.0	FOS+60M
450	28.6854477	-42.9014816	1.0	FOS+60M

451	28.6882133	-42.8849335	1.0	FOS+60M
452	28.6906013	-42.8683586	1.0	FOS+60M
453	28.6926117	-42.8517494	1.0	FOS+60M
454	28.6942482	-42.8351212	1.0	FOS+60M
455	28.6955032	-42.8184738	1.0	FOS+60M
456	28.6963806	-42.8018150	1.0	FOS+60M
457	29.4339447	-41.9815140	59.1	FOS+60M
458	29.4531364	-41.9729767	1.0	FOS+60M
459	29.4721336	-41.9641953	1.0	FOS+60M
460	29.4909248	-41.9551773	1.0	FOS+60M
461	29.5095062	-41.9459229	1.0	FOS+60M
462	29.5278702	-41.9364357	1.0	FOS+60M
463	29.5460205	-41.9267197	1.0	FOS+60M
464	29.5639381	-41.9167786	1.0	FOS+60M
465	29.5816307	-41.9066086	1.0	FOS+60M
466	29.5990868	-41.8962212	1.0	FOS+60M
467	29.6163025	-41.8856125	1.0	FOS+60M
468	29.6332779	-41.8747864	1.0	FOS+60M
469	29.6500015	-41.8637505	1.0	FOS+60M
470	29.6664696	-41.8525047	1.0	FOS+60M
471	29.6826782	-41.8410530	1.0	FOS+60M
472	29.6986275	-41.8294029	1.0	FOS+60M
473	29.7143059	-41.8175468	1.0	FOS+60M
474	29.7297134	-41.8055000	1.0	FOS+60M
475	29.7448425	-41.7932587	1.0	FOS+60M
476	29.7596931	-41.7808304	1.0	FOS+60M
477	29.7742577	-41.7682152	1.0	FOS+60M
478	29.7885323	-41.7554169	1.0	FOS+60M
479	29.8025169	-41.7424393	1.0	FOS+60M
480	29.8162079	-41.7292900	1.0	FOS+60M
481	29.8295937	-41.7159691	1.0	FOS+60M
482	29.8426781	-41.7024841	1.0	FOS+60M
483	29.8554573	-41.6888313	1.0	FOS+60M
484	29.8679237	-41.6750221	1.0	FOS+60M
485	29.8800774	-41.6610565	1.0	FOS+60M
486	29.8919106	-41.6469421	1.0	FOS+60M
487	29.9034271	-41.6326790	1.0	FOS+60M
488	31.2253952	-41.6771927	59.5	2500m+100M
489	31.2330360	-41.6832695	0.5	2500m+100M
490	31.2484207	-41.6953087	1.0	2500m+100M
491	31.2639732	-41.7072372	1.0	2500m+100M
492	31.2796860	-41.7190399	1.0	2500m+100M
493	31.2955666	-41.7307281	1.0	2500m+100M
494	31.3116035	-41.7422905	1.0	2500m+100M
495	31.3278008	-41.7537308	1.0	2500m+100M
496	31.3441544	-41.7650490	1.0	2500m+100M
497	31.3606682	-41.7762375	1.0	2500m+100M
498	31.3773346	-41.7873039	1.0	2500m+100M
499	31.3941536	-41.7982407	1.0	2500m+100M
500	31.4111214	-41.8090515	1.0	2500m+100M
501	31.4374809	-41.8253746	1.5	2500m+100M
502	31.4673271	-41.8317642	1.4	FOS+60M
503	31.4888916	-41.8360062	1.0	FOS+60M
504	31.5105476	-41.8399734	1.0	FOS+60M
505	31.5322952	-41.8436661	1.0	FOS+60M
506	31.5541191	-41.8470802	1.0	FOS+60M
507	31.5760231	-41.8502235	1.0	FOS+60M

508	31.5979919	-41.8530846	1.0	FOS+60M
509	31.6200256	-41.8556709	1.0	FOS+60M
510	31.6421165	-41.8579750	1.0	FOS+60M
511	31.6642532	-41.8600006	1.0	FOS+60M
512	31.6864395	-41.8617477	1.0	FOS+60M
513	31.7086563	-41.8632088	1.0	FOS+60M
514	31.7309074	-41.8643951	1.0	FOS+60M
515	31.7531815	-41.8652954	1.0	FOS+60M
516	31.7754745	-41.8659134	1.0	FOS+60M
517	31.7977753	-41.8662529	1.0	FOS+60M
518	31.8200836	-41.8663063	1.0	FOS+60M
519	33.0054741	-41.8362999	53.2	FOS+60M
520	33.0277596	-41.8358040	1.0	FOS+60M
521	33.0500298	-41.8350258	1.0	FOS+60M
522	33.0722809	-41.8339653	1.0	FOS+60M
523	33.0945053	-41.8326225	1.0	FOS+60M
524	33.1166954	-41.8309975	1.0	FOS+60M
525	33.1388474	-41.8290939	1.0	FOS+60M
526	33.1609459	-41.8269119	1.0	FOS+60M
527	33.1829948	-41.8244476	1.0	FOS+60M
528	33.2049828	-41.8217049	1.0	FOS+60M
529	33.2269058	-41.8186836	1.0	FOS+60M
530	33.2487564	-41.8153877	1.0	FOS+60M
531	33.2705231	-41.8118172	1.0	FOS+60M
532	33.2922096	-41.8079681	1.0	FOS+60M
533	33.3138046	-41.8038445	1.0	FOS+60M
534	33.3353004	-41.7994499	1.0	FOS+60M
535	33.3566933	-41.7947845	1.0	FOS+60M
536	33.3779755	-41.7898483	1.0	FOS+60M
537	33.3991432	-41.7846451	1.0	FOS+60M
538	33.4201889	-41.7791710	1.0	FOS+60M
539	33.4411049	-41.7734337	1.0	FOS+60M
540	33.4618874	-41.7674332	1.0	FOS+60M
541	33.4825287	-41.7611694	1.0	FOS+60M
542	33.5030212	-41.7546463	1.0	FOS+60M
543	33.5233612	-41.7478638	1.0	FOS+60M
544	33.5435448	-41.7408257	1.0	FOS+60M
545	33.5635643	-41.7335320	1.0	FOS+60M
546	33.5834122	-41.7259865	1.0	FOS+60M
547	33.6030884	-41.7181931	1.0	FOS+60M
548	33.6225815	-41.7101479	1.0	FOS+60M
549	33.6418877	-41.7018623	1.0	FOS+60M
550	33.6609993	-41.6933289	1.0	FOS+60M
551	33.6799164	-41.6845589	1.0	FOS+60M
552	33.6986313	-41.6755447	1.0	FOS+60M
553	33.7171364	-41.6663017	1.0	FOS+60M
554	33.7354317	-41.6568184	1.0	FOS+60M
555	33.7535095	-41.6471100	1.0	FOS+60M
556	33.7713623	-41.6371727	1.0	FOS+60M
557	33.7889824	-41.6270103	1.0	FOS+60M
558	33.8063698	-41.6166267	1.0	FOS+60M
559	33.8235207	-41.6060257	1.0	FOS+60M
560	33.8404274	-41.5952110	1.0	FOS+60M
561	33.8570862	-41.5841789	1.0	FOS+60M
562	33.8734894	-41.5729408	1.0	FOS+60M
563	33.8896408	-41.5614967	1.0	FOS+60M
564	33.9055252	-41.5498466	1.0	FOS+60M

565	33.9211464	-41.5379982	1.0	FOS+60M
566	33.9364967	-41.5259590	1.0	FOS+60M
567	33.9515686	-41.5137215	1.0	FOS+60M
568	33.9663620	-41.5012970	1.0	FOS+60M
569	33.9808769	-41.4886856	1.0	FOS+60M
570	33.9951019	-41.4758949	1.0	FOS+60M
571	34.0090370	-41.4629250	1.0	FOS+60M
572	34.0226746	-41.4497795	1.0	FOS+60M
573	34.0360184	-41.4364624	1.0	FOS+60M
574	34.0490570	-41.4229813	1.0	FOS+60M
575	34.0617905	-41.4093323	1.0	FOS+60M
576	34.0742111	-41.3955269	1.0	FOS+60M
577	34.0863228	-41.3815689	1.0	FOS+60M
578	34.0981178	-41.3674583	1.0	FOS+60M
579	34.1095924	-41.3531990	1.0	FOS+60M
580	34.1207504	-41.3387947	1.0	FOS+60M
581	34.1315804	-41.3242569	1.0	FOS+60M
582	34.1420784	-41.3095818	1.0	FOS+60M
583	34.1522522	-41.2947731	1.0	FOS+60M
584	34.1620903	-41.2798386	1.0	FOS+60M
585	34.1715927	-41.2647820	1.0	FOS+60M
586	34.1807594	-41.2496071	1.0	FOS+60M
587	35.0044632	-40.4924393	58.9	FOS+60M
588	35.0161972	-40.4678154	1.6	2500m+100M
589	35.0152016	-40.4511566	1.0	2500m+100M
590	35.0139885	-40.4345055	1.0	2500m+100M
591	35.0125542	-40.4178619	1.0	2500m+100M
592	35.0109062	-40.4012337	1.0	2500m+100M
593	35.0090446	-40.3846169	1.0	2500m+100M
594	35.0069618	-40.3680153	1.0	2500m+100M
595	35.0046654	-40.3514290	1.0	2500m+100M
596	35.0021553	-40.3348618	1.0	2500m+100M
597	34.9994278	-40.3183136	1.0	2500m+100M
598	34.9964867	-40.3017883	1.0	2500m+100M
599	34.9933319	-40.2852859	1.0	2500m+100M
600	34.9899597	-40.2688103	1.0	2500m+100M
601	34.9863777	-40.2523575	1.0	2500m+100M
602	34.9825821	-40.2359352	1.0	2500m+100M
603	34.9785767	-40.2195396	1.0	2500m+100M
604	34.9743576	-40.2031784	1.0	2500m+100M
605	35.2213440	-39.2405472	58.8	2500m+100M
606	35.2299156	-39.2252541	1.0	2500m+100M
607	35.2382851	-39.2098961	1.0	2500m+100M
608	35.2464523	-39.1944695	1.0	2500m+100M
609	35.2544212	-39.1789818	1.0	2500m+100M
610	35.2621841	-39.1634331	1.0	2500m+100M
611	35.2697411	-39.1478271	1.0	2500m+100M
612	35.2770996	-39.1321602	1.0	2500m+100M
613	35.2842484	-39.1164322	1.0	2500m+100M
614	35.2911949	-39.1006546	1.0	2500m+100M
615	35.2979355	-39.0848198	1.0	2500m+100M
616	35.3044662	-39.0689354	1.0	2500m+100M
617	35.3107948	-39.0529976	1.0	2500m+100M
618	35.3169136	-39.0370140	1.0	2500m+100M
619	35.3228264	-39.0209808	1.0	2500m+100M
620	35.3285255	-39.0049019	1.0	2500m+100M
621	35.3340225	-38.9887810	1.0	2500m+100M

622	35.3393059	-38.9726143	1.0	2500m+100M
623	35.3443794	-38.9564133	1.0	2500m+100M
624	35.3492432	-38.9401703	1.0	2500m+100M
625	35.3539009	-38.9238853	1.0	2500m+100M
626	35.3583450	-38.9075699	1.0	2500m+100M
627	35.3625755	-38.8912201	1.0	2500m+100M
628	35.3666000	-38.8748360	1.0	2500m+100M
629	35.3704071	-38.8584175	1.0	2500m+100M
630	35.3740082	-38.8419762	1.0	2500m+100M
631	35.3773918	-38.8255081	1.0	2500m+100M
632	35.3805656	-38.8090096	1.0	2500m+100M
633	35.3823128	-38.7994232	0.6	2500m+100M
634	35.3835487	-38.7924881	0.4	2500m+100M
635	35.3863487	-38.7759476	1.0	2500m+100M
636	35.3889313	-38.7593880	1.0	2500m+100M
637	35.3913040	-38.7428093	1.0	2500m+100M
638	35.3934631	-38.7262154	1.0	2500m+100M
639	35.3954086	-38.7096024	1.0	2500m+100M
640	35.3971443	-38.6929741	1.0	2500m+100M
641	35.4363785	-38.2277908	27.9	2500m+100M
642	35.4372711	-38.2111206	1.0	2500m+100M
643	35.4379539	-38.1944466	1.0	2500m+100M
644	35.4384232	-38.1777649	1.0	2500m+100M
645	35.4386826	-38.1610832	1.0	2500m+100M
646	35.4387283	-38.1443977	1.0	2500m+100M
647	35.4385643	-38.1277122	1.0	2500m+100M
648	35.4381905	-38.1110306	1.0	2500m+100M
649	35.4376030	-38.0943527	1.0	2500m+100M
650	35.4368095	-38.0776787	1.0	2500m+100M
651	35.4358025	-38.0610123	1.0	2500m+100M
652	35.4345856	-38.0443573	1.0	2500m+100M
653	35.4331589	-38.0277100	1.0	2500m+100M
654	35.4315224	-38.0110741	1.0	2500m+100M
655	35.4296761	-37.9944534	1.0	2500m+100M
656	35.4276199	-37.9778481	1.0	2500m+100M
657	35.4253578	-37.9612579	1.0	2500m+100M
658	35.4228859	-37.9446869	1.0	2500m+100M
659	35.4202042	-37.9281387	1.0	2500m+100M
660	35.4173164	-37.9116096	1.0	2500m+100M
661	35.4142227	-37.8951035	1.0	2500m+100M
662	35.4109230	-37.8786240	1.0	2500m+100M
663	35.4074173	-37.8621750	1.0	2500m+100M
664	35.4037056	-37.8457489	1.0	2500m+100M
665	35.3997841	-37.8293571	1.0	2500m+100M
666	35.3956642	-37.8129959	1.0	2500m+100M
667	35.3913383	-37.7966652	1.0	2500m+100M
668	35.3868065	-37.7803726	1.0	2500m+100M
669	35.3820724	-37.7641182	1.0	2500m+100M
670	35.3771400	-37.7478981	1.0	2500m+100M
671	35.3720016	-37.7317162	1.0	2500m+100M
672	35.3666649	-37.7155800	1.0	2500m+100M
673	35.3611221	-37.6994820	1.0	2500m+100M
674	35.3553085	-37.6832237	1.0	2500m+100M
675	35.3553848	-37.6834335	0.0	2500m+100M
676	35.3494949	-37.6674156	1.0	2500m+100M
677	35.3434067	-37.6514473	1.0	2500m+100M
678	35.3371201	-37.6355286	1.0	2500m+100M

679	35.3306351	-37.6196594	1.0	2500m+100M
680	35.3239517	-37.6038437	1.0	2500m+100M
681	35.3170776	-37.5880775	1.0	2500m+100M
682	35.3100052	-37.5723686	1.0	2500m+100M
683	35.3027420	-37.5567169	1.0	2500m+100M
684	35.3004341	-37.5518417	0.3	2500m+100M
685	35.2952957	-37.5411224	0.7	2500m+100M
686	35.2876587	-37.5255814	1.0	2500m+100M
687	35.2798347	-37.5101051	1.0	2500m+100M
688	35.2718163	-37.4946899	1.0	2500m+100M
689	35.2636108	-37.4793396	1.0	2500m+100M
690	35.2552147	-37.4640503	1.0	2500m+100M
691	35.2466316	-37.4488335	1.0	2500m+100M
692	35.2378616	-37.4336815	1.0	2500m+100M
693	35.2289047	-37.4185982	1.0	2500m+100M
694	35.2197647	-37.4035912	1.0	2500m+100M
695	35.2104416	-37.3886528	1.0	2500m+100M
696	35.4979172	-36.4293861	59.1	2500m+100M
697	36.2798424	-36.1367111	41.8	2500m+100M
698	36.2984161	-36.1295280	1.0	2500m+100M
699	36.3168945	-36.1221924	1.0	2500m+100M
700	36.3352814	-36.1147003	1.0	2500m+100M
701	36.3535690	-36.1070633	1.0	2500m+100M
702	36.3621368	-36.1034164	0.5	2500m+100M
703	36.3717575	-36.0992737	0.5	2500m+100M
704	36.3898506	-36.0913391	1.0	2500m+100M
705	36.4078407	-36.0832520	1.0	2500m+100M
706	36.4257240	-36.0750198	1.0	2500m+100M
707	36.4435043	-36.0666351	1.0	2500m+100M
708	36.4611740	-36.0581093	1.0	2500m+100M
709	36.4787331	-36.0494347	1.0	2500m+100M
710	36.4961853	-36.0406189	1.0	2500m+100M
711	36.5135193	-36.0316544	1.0	2500m+100M
712	36.5307426	-36.0225525	1.0	2500m+100M
713	36.5478477	-36.0133057	1.0	2500m+100M
714	36.5648308	-36.0039177	1.0	2500m+100M
715	36.5816956	-35.9943924	1.0	2500m+100M
716	36.5984383	-35.9847260	1.0	2500m+100M
717	36.6150589	-35.9749184	1.0	2500m+100M
718	36.6315536	-35.9649811	1.0	2500m+100M
719	36.6337280	-35.9636536	0.1	2500m+100M
720	36.6479721	-35.9549637	0.9	2500m+100M
721	36.6642761	-35.9448204	1.0	2500m+100M
722	36.6804504	-35.9345436	1.0	2500m+100M
723	36.6964912	-35.9241333	1.0	2500m+100M
724	36.7123985	-35.9135895	1.0	2500m+100M
725	36.7281723	-35.9029160	1.0	2500m+100M
726	36.7438087	-35.8921127	1.0	2500m+100M
727	36.7593079	-35.8811798	1.0	2500m+100M
728	36.7744102	-35.8703117	1.0	2500m+100M
729	36.7746696	-35.8701210	0.0	2500m+100M
730	36.7757530	-35.8693352	0.1	2500m+100M
731	36.7899361	-35.8589783	0.9	2500m+100M
732	36.8050613	-35.8477097	1.0	2500m+100M
733	36.8200455	-35.8363190	1.0	2500m+100M
734	36.8348808	-35.8248062	1.0	2500m+100M
735	36.8495750	-35.8131676	1.0	2500m+100M

736	36.8641167	-35.8014107	1.0	2500m+100M
737	36.8785095	-35.7895355	1.0	2500m+100M
738	36.8927536	-35.7775421	1.0	2500m+100M
739	36.9068489	-35.7654266	1.0	2500m+100M
740	36.9207840	-35.7532005	1.0	2500m+100M
741	36.9345703	-35.7408562	1.0	2500m+100M
742	36.9481964	-35.7284012	1.0	2500m+100M
743	36.9616623	-35.7158318	1.0	2500m+100M
744	36.9749718	-35.7031555	1.0	2500m+100M
745	36.9881248	-35.6903648	1.0	2500m+100M
746	37.0011101	-35.6774712	1.0	2500m+100M
747	37.0139389	-35.6644669	1.0	2500m+100M
748	37.0265999	-35.6513557	1.0	2500m+100M
749	37.0390968	-35.6381454	1.0	2500m+100M
750	37.0514259	-35.6248283	1.0	2500m+100M
751	37.0635910	-35.6114120	1.0	2500m+100M
752	37.0755806	-35.5978966	1.0	2500m+100M
753	37.0874062	-35.5842819	1.0	2500m+100M
754	37.0990562	-35.5705719	1.0	2500m+100M
755	37.1105347	-35.5567627	1.0	2500m+100M
756	37.1218414	-35.5428658	1.0	2500m+100M
757	37.1329727	-35.5288696	1.0	2500m+100M
758	37.1329727	-35.5288696	0.0	2500m+100M
759	37.1439362	-35.5147896	1.0	2500m+100M
760	37.1547241	-35.5006180	1.0	2500m+100M
761	37.1653366	-35.4863548	1.0	2500m+100M
762	37.1757660	-35.4720078	1.0	2500m+100M
763	37.1860199	-35.4575768	1.0	2500m+100M
764	37.1960907	-35.4430618	1.0	2500m+100M
765	37.2059784	-35.4284630	1.0	2500m+100M
766	37.2105293	-35.4216270	0.5	2500m+100M
767	37.2157745	-35.4138184	0.5	2500m+100M
768	37.2254601	-35.3991318	1.0	2500m+100M
769	37.2349625	-35.3843613	1.0	2500m+100M
770	37.2442818	-35.3695145	1.0	2500m+100M
771	37.2534142	-35.3545914	1.0	2500m+100M
772	37.2544556	-35.3528671	0.1	2500m+100M
773	37.2625275	-35.3396645	0.9	2500m+100M
774	37.2714806	-35.3246689	1.0	2500m+100M
775	37.2729797	-35.3221169	0.2	2500m+100M
776	37.2802849	-35.3096161	0.8	2500m+100M
777	37.2889099	-35.2944946	1.0	2500m+100M
778	37.2973518	-35.2793045	1.0	2500m+100M
779	37.3001404	-35.2741890	0.3	2500m+100M
780	37.3228188	-35.2553711	1.6	FOS+60M
781	37.3276024	-35.2391434	1.0	FOS+60M
782	37.3320541	-35.2228546	1.0	FOS+60M
783	37.3361702	-35.2065086	1.0	FOS+60M
784	37.3399544	-35.1901093	1.0	FOS+60M
785	37.3434029	-35.1736565	1.0	FOS+60M
786	37.3465157	-35.1571579	1.0	FOS+60M
787	37.3492928	-35.1406212	1.0	FOS+60M
788	37.7781525	-34.2905731	55.2	FOS+60M
789	37.7860184	-34.2752075	1.0	FOS+60M
790	37.7935715	-34.2597313	1.0	FOS+60M
791	37.8008118	-34.2441559	1.0	FOS+60M
792	37.8077316	-34.2284851	1.0	FOS+60M

793	37.8143387	-34.2127151	1.0	FOS+60M
794	37.8206253	-34.1968575	1.0	FOS+60M
795	37.8265877	-34.1809158	1.0	FOS+60M
796	37.8322296	-34.1648903	1.0	FOS+60M
797	37.8375473	-34.1487923	1.0	FOS+60M
798	37.8425407	-34.1326218	1.0	FOS+60M
799	37.8472061	-34.1163826	1.0	FOS+60M
800	37.8515434	-34.1000786	1.0	FOS+60M
801	37.8555527	-34.0837212	1.0	FOS+60M
802	37.8592300	-34.0673065	1.0	FOS+60M
803	37.8625793	-34.0508461	1.0	FOS+60M
804	37.8655968	-34.0343399	1.0	FOS+60M
805	38.0153580	-33.3515778	41.6	FOS+60M
806	38.0186882	-33.3351173	1.0	FOS+60M
807	38.0216866	-33.3186111	1.0	FOS+60M
808	38.0243607	-33.3020630	1.0	FOS+60M
809	38.0267029	-33.2854767	1.0	FOS+60M
810	38.0287132	-33.2688637	1.0	FOS+60M
811	38.0303917	-33.2522240	1.0	FOS+60M
812	38.0317421	-33.2355652	1.0	FOS+60M
813	38.0327606	-33.2188873	1.0	FOS+60M
814	38.0334473	-33.2021980	1.0	FOS+60M
815	38.0338058	-33.1855011	1.0	FOS+60M
816	38.0338326	-33.1688042	1.0	FOS+60M
817	38.0335274	-33.1521072	1.0	FOS+60M
818	38.0328903	-33.1354179	1.0	FOS+60M
819	38.0319252	-33.1187401	1.0	FOS+60M
820	38.0306282	-33.1020775	1.0	FOS+60M
821	38.2743568	-32.7598915	23.9	2500m+100M
822	38.2768402	-32.7491302	0.7	2500m+100M
823	38.2804222	-32.7327118	1.0	2500m+100M
824	38.2838135	-32.7162552	1.0	2500m+100M
825	38.2870064	-32.6997757	1.0	2500m+100M
826	38.2900009	-32.6832695	1.0	2500m+100M
827	38.2921486	-32.6707115	0.8	2500m+100M
828	38.2929382	-32.6667595	0.2	2500m+100M
829	38.2961121	-32.6502762	1.0	2500m+100M
830	38.2990913	-32.6337662	1.0	2500m+100M
831	38.2992859	-32.6326370	0.1	2500m+100M
832	38.3018875	-32.6172333	0.9	2500m+100M
833	38.3044891	-32.6006813	1.0	2500m+100M
834	38.3068924	-32.5841064	1.0	2500m+100M
835	38.3090973	-32.5675125	1.0	2500m+100M
836	38.3111115	-32.5508995	1.0	2500m+100M
837	38.3122635	-32.5405350	0.6	2500m+100M
838	38.3129272	-32.5342712	0.4	2500m+100M
839	38.3145523	-32.5176277	1.0	2500m+100M
840	38.3159790	-32.5009727	1.0	2500m+100M
841	38.3521118	-32.0014687	30.0	2500m+100M
842	38.4040565	-31.5585251	26.7	2500m+100M
843	38.1030426	-30.9589596	39.1	FOS+60M
844	38.1540642	-30.2329845	43.5	FOS+60M
845	38.1620903	-29.4855709	44.7	FOS+60M
846	38.5180969	-28.9733219	35.9	Median Line