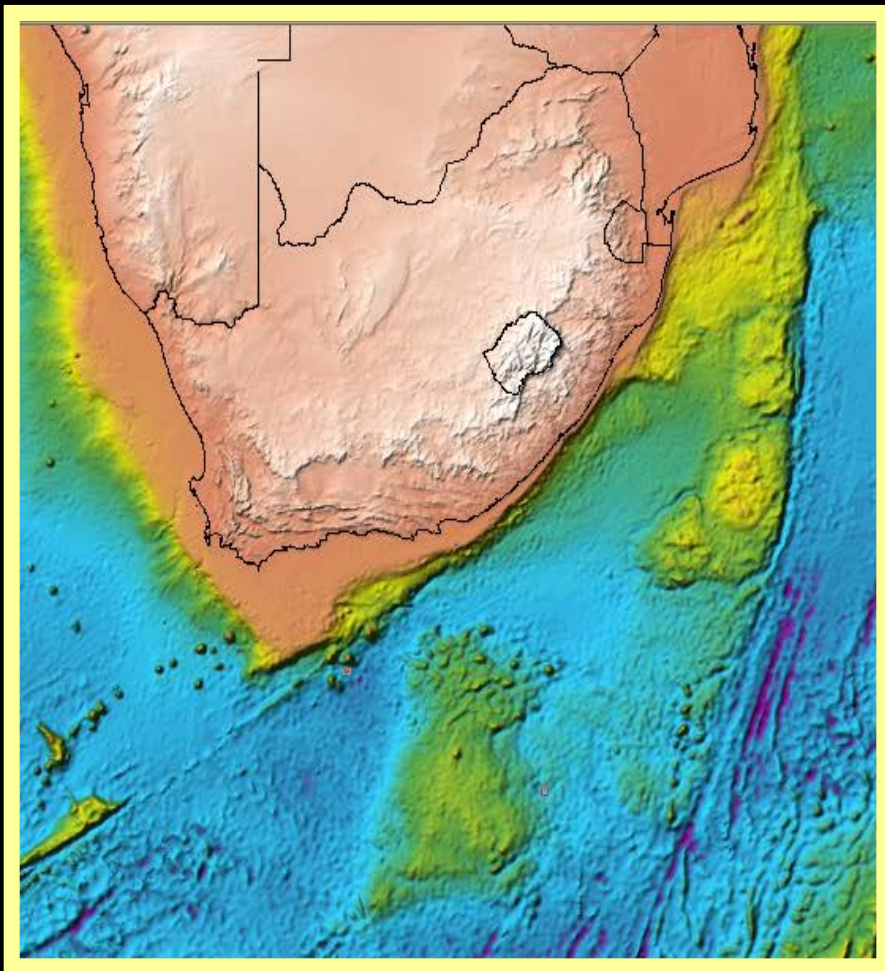




# Republic of South Africa

## AMENDMENT TO the Partial Submission to the Commission on the Limits of the Continental Shelf pursuant to Article 76, paragraph 8 of the United Nations Convention on the Law of the Sea 1982 in respect of the area of the South African Mainland



Part I

Executive Summary

## Table of Contents

1. Introduction.....	1
2. Outer limit of the extended continental shelf in respect of the South African Mainland.....	1
3. Specific provisions of Article 76 invoked to support the submission.....	2
4. Names of Commission Members who Provided Advice During the Preparation of the Submission.....	2
5. Absence of Disputes.....	2
6. Natural Prolongation of the South African Landmass.....	3
7. Detailed Description of the Outer Limit of the Continental Shelf of the South African Mainland.....	3
8. State Bodies Responsible for the Preparation of the Continental Shelf Submission.....	5
Figure 1: Amended Outer Limits of the Continental Shelf of the Republic of South Africa beyond 200M. ....	5
Table 1: List of Coordinates Defining the Amended Outer Limits of the Continental Shelf for the South African Mainland. All coordinates relate to the WGS84 geodetic reference system.....	6
Appendix A1: Chart illustrating the amended outer limit of the continental shelf for the South African Mainland	

## **1. Introduction**

This Executive Summary forms part of an Amendment (hereafter “Amendment”) to the 2009 Partial Submission to the Commission on the Limits of the Continental Shelf (hereafter “the Commission”) pursuant to Article 76, paragraph 8 of the United Nations Convention on the Law of the Sea 1982 (hereafter “the Convention”) in respect of the area of the South African Mainland (hereafter referred to as “the 2009 Submission”).

The Republic of South Africa first formally proclaimed a continental shelf, as defined under the 1958 Geneva Convention on the Continental Shelf, under the Territorial Waters Act No. 87 of 1963, as amended by the Territorial Waters Amendment Act, No. 98 of 1977. This was subsequently modified, as defined by Article 76 of the Convention by the Maritime Zones Act, No. 15 of 1994.

The Republic of South Africa ratified UNCLOS on 23 December 1997 and is accordingly a party to the Convention. Pursuant to Article 76 and Article 4 of Annex II of the Convention, the Republic of South Africa hereby lodges with the Commission its submission in support of the establishment of the continental shelf in the area of the South African Mainland that lies beyond 200 nautical miles from the baselines from which the breadth of the territorial sea is measured.

## **2. Outer limit of the extended continental shelf in respect of the South African Mainland**

This partial submission (including its amendment) covers the continental shelf off the west, east and southern coasts of the mainland of the territory of the Republic of South Africa. This submission does not preclude the Republic of South Africa from making any other submission(s), either concurrently with the current submission, or at a later date.

### **3. Specific provisions of Article 76 invoked to support the submission**

The outer limits contained in this submission are based on the provisions of Articles 76.4 (a)(i) and 76.4 (a)(ii) and 76.4 (b) and 76.5 of UNCLOS.

### **4. Names of Commission Members who Provided Advice during the Preparation of the Submission**

The Republic of South Africa was assisted in the preparation of this submission by Dr. Harald Brekke, member of the Commission on the Limits of the Continental Shelf (1997-present). No advice was provided by any other member of the Commission.

### **5. Absence of Disputes**

In accordance with paragraph 2(a) of Annex I to the Commission's Rules of Procedures, the Republic of South Africa wishes to inform the Commission that there are unresolved areas of continental shelf between it and other coastal States.

Portions of the current submission concern areas under dispute or, at least, areas under which there remain unresolved matters. In the east, South Africa has an unresolved maritime boundary with Mozambique and, in the west, South Africa has an unresolved boundary with Namibia.

In the spirit of Article 76(10) of the Convention and applying Rule 46(2) of the Rules of Procedure of the Commission and Annex I of the Rules of Procedure, South Africa has agreed with Mozambique, by means of an Exchange of Letters, that their respective submissions may be considered by the Commission on the understanding that this shall not prejudice future delimitation. At the same time, South Africa has transmitted a note verbale to Namibia informing the latter that it intends to make a submission for an extended continental shelf and that such submission will be without prejudice to the rights of the two countries regarding any future finalisation or delimitation of the boundary between the two countries.

On account of this communication the Government of the Republic of South Africa is satisfied and hereby assures the Commission, that the submission shall not prejudice the delimitation of the continental shelf between South Africa and its neighbours.

## **6. Natural Prolongation of the South African Landmass**

The continental shelf of South Africa surrounds the southern end of the African continent on its west, south and east sides and extends significantly beyond 200M. It has a complex bathymetric morphology and is characterised by the presence of a number of large submarine depressions and elevations.

It is the view of South Africa that in geomorphological and geological terms the continental margin appurtenant to the continental landmass forms part of the same single continuous continental margin. This is evidenced by the morphological and geological continuity of the component highs and elevations of the South African continental margin which have been derived from a progressive series of related geological events.

## **7. Detailed Description of the Outer Limit of the Continental Shelf of the South African Mainland**

The outer limits of the continental shelf of the South African Mainland consist of a series of straight lines, as provided for in the Convention being not more than 60M long, which join fixed points, defined by coordinates of latitude and longitude, generated from the combination of Hedberg Line and Gardiner Line beyond 200M and the two sets of constraints.

The outer limit of the continental shelf derived from the combination of the 2009 Submission with this Amendment is composed of 945 Fixed Points connecting lines not exceeding 60M in accordance with Article 76, paragraph 7 of the Convention. Of these 945 Fixed Points:

- 321 Fixed Points are located on the outer edge of the continental margin defined by the Hedberg Formula (paragraph 4(a)(ii) of Article 76).
- 526 Fixed Points are located on the Depth Constraint, 100M from the 2500m isobath (paragraph 5 of Article 76).
- 95 Fixed Points are located on the Distance Constraint 350M from the Territorial Sea Baselines (paragraph 5 of Article 76)
- 2 Fixed Points are located on the line 200M from the Territorial Sea Baselines (paragraph 1 of Article 76).
- 1 Fixed Point is located on the median line between the Republic of South Africa and Mozambique.

A summary of these fixed points is provided in Figure 1 and the coordinates of latitude and longitude of the fixed points comprising the outer limit of the continental shelf are given in Table 1. A large scale map is included with this executive summary (Appendix 1).

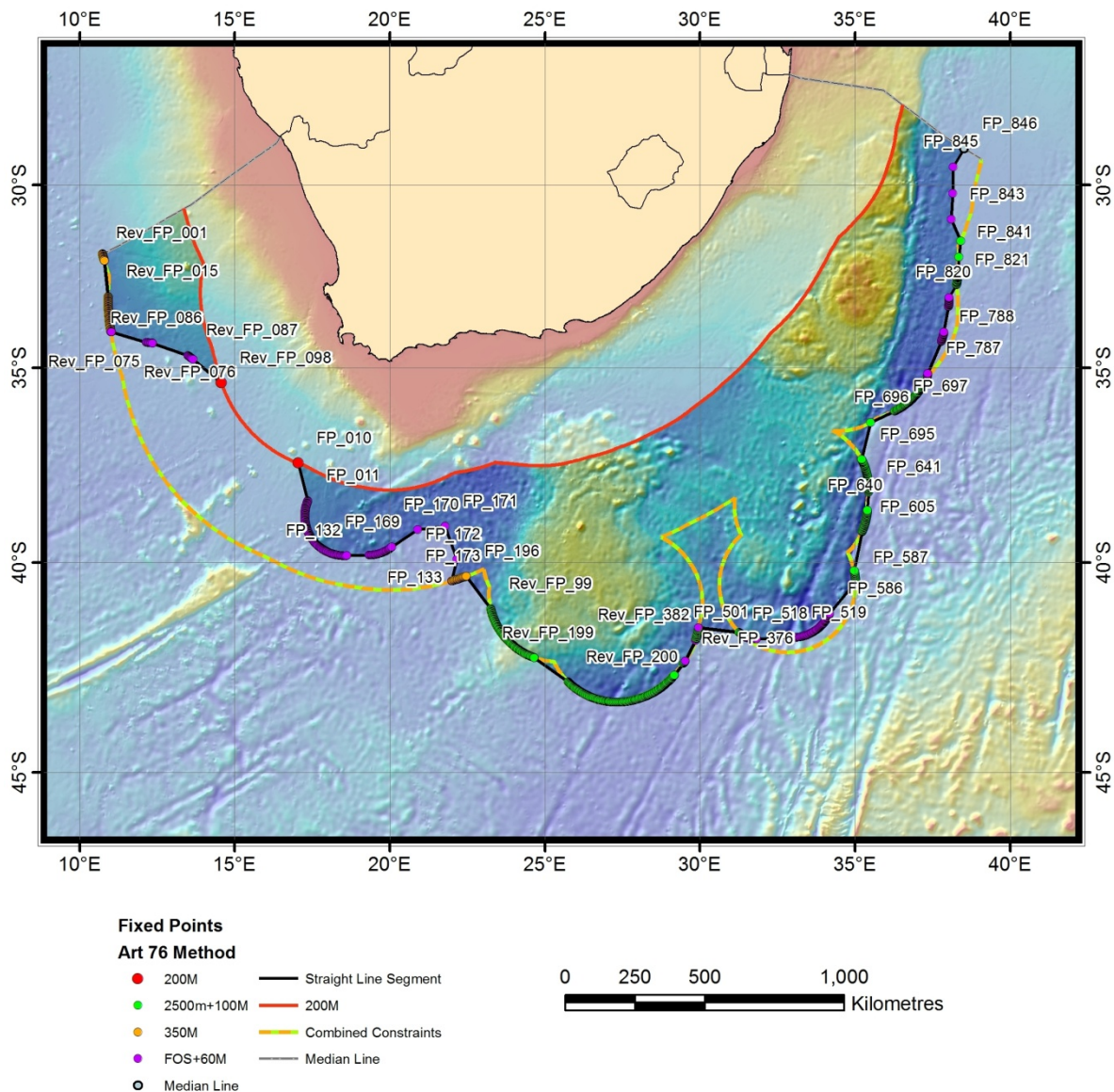


Figure 1: Amended Outer Limits of the Continental Shelf of the Republic of South Africa beyond 200M.

## 8. State Bodies Responsible for the Preparation of the Continental Shelf Submission

This submission, together with all maps, figures, enclosures, appendices and databases, was prepared by the South African Agency for the Promotion of Petroleum Exploration and Exploitation (Petroleum Agency SA).

Table 1: List of Coordinates Defining the Amended Outer Limits of the Continental Shelf for the South African Mainland. All coordinates relate to the WGS84 geodetic reference system.

Fixed Point	Longitude	Latitude	Distance to Last FP (M)	Art 76 Method
Rev_FP_001	10.7224388	-31.9059220	0.00	350M
Rev_FP_002	10.7278412	-31.9219757	1.00	350M
Rev_FP_003	10.7332990	-31.9380159	1.00	350M
Rev_FP_004	10.7388122	-31.9540425	1.00	350M
Rev_FP_005	10.7435513	-31.9676812	0.85	350M
Rev_FP_006	10.7442808	-31.9700814	0.15	350M
Rev_FP_007	10.7492272	-31.9862422	1.00	350M
Rev_FP_008	10.7542293	-32.0023907	1.00	350M
Rev_FP_009	10.7592869	-32.0185269	1.00	350M
Rev_FP_010	10.7644006	-32.0346504	1.00	350M
Rev_FP_011	10.7695697	-32.0507612	1.00	350M
Rev_FP_012	10.7747952	-32.0668590	1.00	350M
Rev_FP_013	10.7800750	-32.0829441	1.00	350M
Rev_FP_014	10.7854111	-32.0990159	1.00	350M
Rev_FP_015	10.9069905	-33.0791857	59.01	350M
Rev_FP_016	10.9069205	-33.0958844	1.00	350M
Rev_FP_017	10.9069070	-33.1125832	1.00	350M
Rev_FP_018	10.9069499	-33.1292819	1.00	350M
Rev_FP_019	10.9070494	-33.1459804	1.00	350M
Rev_FP_020	10.9072055	-33.1626785	1.00	350M
Rev_FP_021	10.9074186	-33.1793762	1.00	350M
Rev_FP_022	10.9076875	-33.1960732	1.00	350M
Rev_FP_023	10.9080134	-33.2127694	1.00	350M
Rev_FP_024	10.9083961	-33.2294648	1.00	350M
Rev_FP_025	10.9088354	-33.2461592	1.00	350M
Rev_FP_026	10.9093315	-33.2628523	1.00	350M
Rev_FP_027	10.9098844	-33.2795442	1.00	350M
Rev_FP_028	10.9104947	-33.2962346	1.00	350M
Rev_FP_029	10.9111606	-33.3129235	1.00	350M
Rev_FP_030	10.9118839	-33.3296107	1.00	350M
Rev_FP_031	10.9126642	-33.3462960	1.00	350M
Rev_FP_032	10.9135013	-33.3629793	1.00	350M
Rev_FP_033	10.9143964	-33.3796604	1.00	350M
Rev_FP_034	10.9153465	-33.3963394	1.00	350M
Rev_FP_035	10.9163552	-33.4130160	1.00	350M
Rev_FP_036	10.9174196	-33.4296900	1.00	350M
Rev_FP_037	10.9185416	-33.4463614	1.00	350M
Rev_FP_038	10.9197208	-33.4630299	1.00	350M
Rev_FP_039	10.9209570	-33.4796956	1.00	350M
Rev_FP_040	10.9222503	-33.4963581	1.00	350M
Rev_FP_041	10.9236008	-33.5130174	1.00	350M
Rev_FP_042	10.9250084	-33.5296734	1.00	350M
Rev_FP_043	10.9264732	-33.5463259	1.00	350M
Rev_FP_044	10.9279951	-33.5629748	1.00	350M
Rev_FP_045	10.9295743	-33.5796199	1.00	350M
Rev_FP_046	10.9312107	-33.5962611	1.00	350M
Rev_FP_047	10.9329046	-33.6128983	1.00	350M



Fixed Point	Longitude	Latitude	Distance to Last FP (M)	Art 76 Method
Rev_FP_048	10.9346553	-33.6295313	1.00	350M
Rev_FP_049	10.9364635	-33.6461600	1.00	350M
Rev_FP_050	10.9383291	-33.6627843	1.00	350M
Rev_FP_051	10.9402519	-33.6794040	1.00	350M
Rev_FP_052	10.9422321	-33.6960189	1.00	350M
Rev_FP_053	10.9442697	-33.7126290	1.00	350M
Rev_FP_054	10.9463646	-33.7292341	1.00	350M
Rev_FP_055	10.9485170	-33.7458341	1.00	350M
Rev_FP_056	10.9507267	-33.7624287	1.00	350M
Rev_FP_057	10.9529939	-33.7790180	1.00	350M
Rev_FP_058	10.9553185	-33.7956018	1.00	350M
Rev_FP_059	10.9577004	-33.8121798	1.00	350M
Rev_FP_060	10.9601401	-33.8287520	1.00	350M
Rev_FP_061	10.9626371	-33.8453183	1.00	350M
Rev_FP_062	10.9651916	-33.8618785	1.00	350M
Rev_FP_063	10.9678036	-33.8784324	1.00	350M
Rev_FP_064	10.9704731	-33.8949800	1.00	350M
Rev_FP_065	10.9732002	-33.9115211	1.00	350M
Rev_FP_066	10.9759848	-33.9280555	1.00	350M
Rev_FP_067	10.9788270	-33.9445831	1.00	350M
Rev_FP_068	10.9817267	-33.9611038	1.00	350M
Rev_FP_069	10.9846840	-33.9776174	1.00	350M
Rev_FP_070	10.9876988	-33.9941239	1.00	350M
Rev_FP_071	10.9907713	-34.0106230	1.00	350M
Rev_FP_072	10.9939014	-34.0271146	1.00	350M
Rev_FP_073	10.9958543	-34.0372138	0.61	FOS+60M
Rev_FP_074	10.9984291	-34.0380204	0.14	FOS+60M
Rev_FP_075	11.0173211	-34.0436267	1.00	FOS+60M
Rev_FP_076	12.1422928	-34.3160316	58.33	FOS+60M
Rev_FP_077	12.1620246	-34.3193035	1.00	FOS+60M
Rev_FP_078	12.1818209	-34.3222988	1.00	FOS+60M
Rev_FP_079	12.2016757	-34.3250170	1.00	FOS+60M
Rev_FP_080	12.2215836	-34.3274568	1.00	FOS+60M
Rev_FP_081	12.2415389	-34.3296178	1.00	FOS+60M
Rev_FP_082	12.2615357	-34.3314995	1.00	FOS+60M
Rev_FP_083	12.2815683	-34.3331011	1.00	FOS+60M
Rev_FP_084	12.3016310	-34.3344223	1.00	FOS+60M
Rev_FP_085	12.3217180	-34.3354627	1.00	FOS+60M
Rev_FP_086	12.3418234	-34.3362223	1.00	FOS+60M
Rev_FP_087	13.4792487	-34.6649166	59.74	FOS+60M
Rev_FP_088	13.4945653	-34.6758061	1.00	FOS+60M
Rev_FP_089	13.5101035	-34.6864813	1.00	FOS+60M
Rev_FP_090	13.5258589	-34.6969390	1.00	FOS+60M
Rev_FP_091	13.5418269	-34.7071763	1.00	FOS+60M
Rev_FP_092	13.5580031	-34.7171902	1.00	FOS+60M
Rev_FP_093	13.5743831	-34.7269779	1.00	FOS+60M
Rev_FP_094	13.5909621	-34.7365366	1.00	FOS+60M
Rev_FP_095	13.6077356	-34.7458636	1.00	FOS+60M
Rev_FP_096	13.6246989	-34.7549562	1.00	FOS+60M
Rev_FP_097	13.6418470	-34.7638118	1.00	FOS+60M

Fixed Point	Longitude	Latitude	Distance to Last FP (M)	Art 76 Method
Rev_FP_098	14.5671713	-35.4006012	59.42	200M
FP_010	17.0411129	-37.4865761	0.00	200M
FP_011	17.3541012	-38.4445534	59.30	FOS+60M
FP_012	17.3459702	-38.4599648	1.00	FOS+60M
FP_013	17.3381615	-38.4754791	1.00	FOS+60M
FP_014	17.3306808	-38.4910927	1.00	FOS+60M
FP_015	17.3235302	-38.5068016	1.00	FOS+60M
FP_016	17.3167095	-38.5226021	1.00	FOS+60M
FP_017	17.3102245	-38.5384865	1.00	FOS+60M
FP_018	17.3040714	-38.5544548	1.00	FOS+60M
FP_019	17.2982559	-38.5705032	1.00	FOS+60M
FP_020	17.2927799	-38.5866241	1.00	FOS+60M
FP_021	17.2876453	-38.6028137	1.00	FOS+60M
FP_022	17.2828522	-38.6190681	1.00	FOS+60M
FP_023	17.2784023	-38.6353798	1.00	FOS+60M
FP_024	17.2742996	-38.6517525	1.00	FOS+60M
FP_025	17.2705421	-38.6681709	1.00	FOS+60M
FP_026	17.2671337	-38.6846390	1.00	FOS+60M
FP_027	17.2640724	-38.7011490	1.00	FOS+60M
FP_028	17.2613640	-38.7176933	1.00	FOS+60M
FP_029	17.2590046	-38.7342758	1.00	FOS+60M
FP_030	17.2569981	-38.7508888	1.00	FOS+60M
FP_031	17.2553444	-38.7675209	1.00	FOS+60M
FP_032	17.2540436	-38.7841721	1.00	FOS+60M
FP_033	17.2530975	-38.8008385	1.00	FOS+60M
FP_034	17.2525063	-38.8175163	1.00	FOS+60M
FP_035	17.2522697	-38.8341980	1.00	FOS+60M
FP_036	17.2523899	-38.8508797	1.00	FOS+60M
FP_037	17.2528648	-38.8675575	1.00	FOS+60M
FP_038	17.2536945	-38.8842278	1.00	FOS+60M
FP_039	17.2548809	-38.9008827	1.00	FOS+60M
FP_040	17.2564240	-38.9175224	1.00	FOS+60M
FP_041	17.2583218	-38.9341393	1.00	FOS+60M
FP_042	17.2605743	-38.9507332	1.00	FOS+60M
FP_043	17.2631817	-38.9672928	1.00	FOS+60M
FP_044	17.2661438	-38.9838104	1.00	FOS+60M
FP_045	17.2694607	-39.0002937	1.00	FOS+60M
FP_046	17.2731285	-39.0167274	1.00	FOS+60M
FP_047	17.2771511	-39.0331116	1.00	FOS+60M
FP_048	17.2815228	-39.0494423	1.00	FOS+60M
FP_049	17.2862473	-39.0657120	1.00	FOS+60M
FP_050	17.2913208	-39.0819206	1.00	FOS+60M
FP_051	17.2967415	-39.0980606	1.00	FOS+60M
FP_052	17.3025093	-39.1141243	1.00	FOS+60M
FP_053	17.3086224	-39.1301155	1.00	FOS+60M
FP_054	17.3150806	-39.1460228	1.00	FOS+60M
FP_055	17.3218803	-39.1618385	1.00	FOS+60M
FP_056	17.3290215	-39.1775665	1.00	FOS+60M
FP_057	17.3365021	-39.1932030	1.00	FOS+60M
FP_058	17.3443203	-39.2087364	1.00	FOS+60M

Fixed Point	Longitude	Latitude	Distance to Last FP (M)	Art 76 Method
FP_059	17.3524723	-39.2241669	1.00	FOS+60M
FP_060	17.3609581	-39.2394867	1.00	FOS+60M
FP_061	17.3697739	-39.2546959	1.00	FOS+60M
FP_062	17.3789177	-39.2697868	1.00	FOS+60M
FP_063	17.3883896	-39.2847595	1.00	FOS+60M
FP_064	17.3981838	-39.2996025	1.00	FOS+60M
FP_065	17.4083004	-39.3143158	1.00	FOS+60M
FP_066	17.4187336	-39.3288956	1.00	FOS+60M
FP_067	17.4294834	-39.3433342	1.00	FOS+60M
FP_068	17.4405460	-39.3576355	1.00	FOS+60M
FP_069	17.4519196	-39.3717880	1.00	FOS+60M
FP_070	17.4635983	-39.3857918	1.00	FOS+60M
FP_071	17.4755802	-39.3996391	1.00	FOS+60M
FP_072	17.4878654	-39.4133301	1.00	FOS+60M
FP_073	17.5004463	-39.4268608	1.00	FOS+60M
FP_074	17.5133228	-39.4402237	1.00	FOS+60M
FP_075	17.5264874	-39.4534149	1.00	FOS+60M
FP_076	17.5399418	-39.4664345	1.00	FOS+60M
FP_077	17.5536766	-39.4792786	1.00	FOS+60M
FP_078	17.5676937	-39.4919434	1.00	FOS+60M
FP_079	17.5819836	-39.5044174	1.00	FOS+60M
FP_080	17.5965462	-39.5167084	1.00	FOS+60M
FP_081	17.6113758	-39.5288048	1.00	FOS+60M
FP_082	17.6264706	-39.5407104	1.00	FOS+60M
FP_083	17.6418228	-39.5524139	1.00	FOS+60M
FP_084	17.6574306	-39.5639153	1.00	FOS+60M
FP_085	17.6732864	-39.5752144	1.00	FOS+60M
FP_086	17.6893902	-39.5862999	1.00	FOS+60M
FP_087	17.7057381	-39.5971794	1.00	FOS+60M
FP_088	17.7223206	-39.6078415	1.00	FOS+60M
FP_089	17.7391338	-39.6182861	1.00	FOS+60M
FP_090	17.7561760	-39.6285095	1.00	FOS+60M
FP_091	17.7734432	-39.6385117	1.00	FOS+60M
FP_092	17.7909279	-39.6482849	1.00	FOS+60M
FP_093	17.8086243	-39.6578293	1.00	FOS+60M
FP_094	17.8265305	-39.6671448	1.00	FOS+60M
FP_095	17.8446388	-39.6762238	1.00	FOS+60M
FP_096	17.8629456	-39.6850624	1.00	FOS+60M
FP_097	17.8814449	-39.6936646	1.00	FOS+60M
FP_098	17.9001312	-39.7020226	1.00	FOS+60M
FP_099	17.9190006	-39.7101364	1.00	FOS+60M
FP_100	17.9380455	-39.7180023	1.00	FOS+60M
FP_101	17.9572620	-39.7256203	1.00	FOS+60M
FP_102	17.9766464	-39.7329865	1.00	FOS+60M
FP_103	17.9961872	-39.7400970	1.00	FOS+60M
FP_104	18.0158863	-39.7469521	1.00	FOS+60M
FP_105	18.0357342	-39.7535515	1.00	FOS+60M
FP_106	18.0557232	-39.7598915	1.00	FOS+60M
FP_107	18.0758495	-39.7659683	1.00	FOS+60M
FP_108	18.0961094	-39.7717819	1.00	FOS+60M

Fixed Point	Longitude	Latitude	Distance to Last FP (M)	Art 76 Method
FP_109	18.1164951	-39.7773323	1.00	FOS+60M
FP_110	18.1370010	-39.7826118	1.00	FOS+60M
FP_111	18.1576233	-39.7876282	1.00	FOS+60M
FP_112	18.1783504	-39.7923737	1.00	FOS+60M
FP_113	18.1991806	-39.7968483	1.00	FOS+60M
FP_114	18.2201099	-39.8010483	1.00	FOS+60M
FP_115	18.2411270	-39.8049774	1.00	FOS+60M
FP_116	18.2622280	-39.8086319	1.00	FOS+60M
FP_117	18.2834091	-39.8120117	1.00	FOS+60M
FP_118	18.3046608	-39.8151131	1.00	FOS+60M
FP_119	18.3259792	-39.8179359	1.00	FOS+60M
FP_120	18.3473549	-39.8204842	1.00	FOS+60M
FP_121	18.3687859	-39.8227501	1.00	FOS+60M
FP_122	18.3902645	-39.8247375	1.00	FOS+60M
FP_123	18.4117851	-39.8264465	1.00	FOS+60M
FP_124	18.4333401	-39.8278732	1.00	FOS+60M
FP_125	18.4549236	-39.8290176	1.00	FOS+60M
FP_126	18.4765282	-39.8298798	1.00	FOS+60M
FP_127	18.4981499	-39.8304634	1.00	FOS+60M
FP_128	18.5197811	-39.8307648	1.00	FOS+60M
FP_129	18.5414162	-39.8307800	1.00	FOS+60M
FP_130	18.5630474	-39.8305168	1.00	FOS+60M
FP_131	18.5846691	-39.8299713	1.00	FOS+60M
FP_132	18.6062775	-39.8291435	1.00	FOS+60M
FP_133	19.3311329	-39.8161812	33.52	FOS+60M
FP_134	19.3527393	-39.8154144	1.00	FOS+60M
FP_135	19.3743286	-39.8143654	1.00	FOS+60M
FP_136	19.3958874	-39.8130341	1.00	FOS+60M
FP_137	19.4174156	-39.8114243	1.00	FOS+60M
FP_138	19.4389038	-39.8095322	1.00	FOS+60M
FP_139	19.4603462	-39.8073616	1.00	FOS+60M
FP_140	19.4817390	-39.8049088	1.00	FOS+60M
FP_141	19.5030727	-39.8021812	1.00	FOS+60M
FP_142	19.5243454	-39.7991714	1.00	FOS+60M
FP_143	19.5455456	-39.7958908	1.00	FOS+60M
FP_144	19.5666714	-39.7923279	1.00	FOS+60M
FP_145	19.5877151	-39.7884941	1.00	FOS+60M
FP_146	19.6086693	-39.7843857	1.00	FOS+60M
FP_147	19.6295280	-39.7800026	1.00	FOS+60M
FP_148	19.6502876	-39.7753525	1.00	FOS+60M
FP_149	19.6709442	-39.7704277	1.00	FOS+60M
FP_150	19.6914845	-39.7652359	1.00	FOS+60M
FP_151	19.7119064	-39.7597809	1.00	FOS+60M
FP_152	19.7322063	-39.7540550	1.00	FOS+60M
FP_153	19.7523766	-39.7480698	1.00	FOS+60M
FP_154	19.7724113	-39.7418175	1.00	FOS+60M
FP_155	19.7923031	-39.7353096	1.00	FOS+60M
FP_156	19.8120480	-39.7285423	1.00	FOS+60M
FP_157	19.8316402	-39.7215157	1.00	FOS+60M
FP_158	19.8510761	-39.7142372	1.00	FOS+60M

Fixed Point	Longitude	Latitude	Distance to Last FP (M)	Art 76 Method
FP_159	19.8703461	-39.7067070	1.00	FOS+60M
FP_160	19.8894482	-39.6989250	1.00	FOS+60M
FP_161	19.9083710	-39.6908951	1.00	FOS+60M
FP_162	19.9271183	-39.6826210	1.00	FOS+60M
FP_163	19.9456787	-39.6741028	1.00	FOS+60M
FP_164	19.9640465	-39.6653442	1.00	FOS+60M
FP_165	19.9822197	-39.6563454	1.00	FOS+60M
FP_166	20.0001907	-39.6471138	1.00	FOS+60M
FP_167	20.0179558	-39.6376457	1.00	FOS+60M
FP_168	20.0355091	-39.6279526	1.00	FOS+60M
FP_169	20.0528469	-39.6180267	1.00	FOS+60M
FP_170	20.8997402	-39.1764145	47.46	FOS+60M
FP_171	21.7706337	-39.0911217	40.98	FOS+60M
FP_172	22.1512108	-39.9232712	52.92	FOS+60M
FP_173	21.9857979	-40.4578209	32.94	FOS+60M
FP_174	22.0031166	-40.4539680	0.83	350M
FP_175	22.0240593	-40.4492531	1.00	350M
FP_176	22.0449791	-40.4444885	1.00	350M
FP_177	22.0658798	-40.4396782	1.00	350M
FP_178	22.0867577	-40.4348145	1.00	350M
FP_179	22.1076164	-40.4299049	1.00	350M
FP_180	22.1284542	-40.4249458	1.00	350M
FP_181	22.1492691	-40.4199371	1.00	350M
FP_182	22.1700630	-40.4148788	1.00	350M
FP_183	22.1908340	-40.4097710	1.00	350M
FP_184	22.2115822	-40.4046135	1.00	350M
FP_185	22.2323093	-40.3994102	1.00	350M
FP_186	22.2530117	-40.3941574	1.00	350M
FP_187	22.2736950	-40.3888550	1.00	350M
FP_188	22.2943535	-40.3835030	1.00	350M
FP_189	22.3149872	-40.3781013	1.00	350M
FP_190	22.3355980	-40.3726540	1.00	350M
FP_191	22.3561859	-40.3671570	1.00	350M
FP_192	22.3767490	-40.3616104	1.00	350M
FP_193	22.3972893	-40.3560181	1.00	350M
FP_194	22.4178047	-40.3503761	1.00	350M
FP_195	22.4382954	-40.3446846	1.00	350M
FP_196	22.4587612	-40.3389473	1.00	350M
Rev_FP_99	23.2511498	-41.1365165	59.94	2500m+100M
Rev_FP_100	23.2561624	-41.1527565	1.00	2500m+100M
Rev_FP_101	23.2613920	-41.1689576	1.00	2500m+100M
Rev_FP_102	23.2668384	-41.1851180	1.00	2500m+100M
Rev_FP_103	23.2725010	-41.2012362	1.00	2500m+100M
Rev_FP_104	23.2783795	-41.2173105	1.00	2500m+100M
Rev_FP_105	23.2844735	-41.2333392	1.00	2500m+100M
Rev_FP_106	23.2907825	-41.2493208	1.00	2500m+100M
Rev_FP_107	23.2973060	-41.2652535	1.00	2500m+100M
Rev_FP_108	23.3040435	-41.2811358	1.00	2500m+100M
Rev_FP_109	23.3109944	-41.2969660	1.00	2500m+100M
Rev_FP_110	23.3181582	-41.3127426	1.00	2500m+100M

Fixed Point	Longitude	Latitude	Distance to Last FP (M)	Art 76 Method
Rev_FP_111	23.3255344	-41.3284639	1.00	2500m+100M
Rev_FP_112	23.3331222	-41.3441282	1.00	2500m+100M
Rev_FP_113	23.3409212	-41.3597340	1.00	2500m+100M
Rev_FP_114	23.3489306	-41.3752797	1.00	2500m+100M
Rev_FP_115	23.3571498	-41.3907637	1.00	2500m+100M
Rev_FP_116	23.3655781	-41.4061844	1.00	2500m+100M
Rev_FP_117	23.3742147	-41.4215401	1.00	2500m+100M
Rev_FP_118	23.3830589	-41.4368295	1.00	2500m+100M
Rev_FP_119	23.3921101	-41.4520507	1.00	2500m+100M
Rev_FP_120	23.4013672	-41.4672023	1.00	2500m+100M
Rev_FP_121	23.4108297	-41.4822828	1.00	2500m+100M
Rev_FP_122	23.4204966	-41.4972905	1.00	2500m+100M
Rev_FP_123	23.4303670	-41.5122239	1.00	2500m+100M
Rev_FP_124	23.4404402	-41.5270815	1.00	2500m+100M
Rev_FP_125	23.4507151	-41.5418617	1.00	2500m+100M
Rev_FP_126	23.4611909	-41.5565630	1.00	2500m+100M
Rev_FP_127	23.4718666	-41.5711839	1.00	2500m+100M
Rev_FP_128	23.4827412	-41.5857228	1.00	2500m+100M
Rev_FP_129	23.4938138	-41.6001783	1.00	2500m+100M
Rev_FP_130	23.5050834	-41.6145488	1.00	2500m+100M
Rev_FP_131	23.5165488	-41.6288329	1.00	2500m+100M
Rev_FP_132	23.5282091	-41.6430290	1.00	2500m+100M
Rev_FP_133	23.5400631	-41.6571358	1.00	2500m+100M
Rev_FP_134	23.5521098	-41.6711517	1.00	2500m+100M
Rev_FP_135	23.5643480	-41.6850752	1.00	2500m+100M
Rev_FP_136	23.5767766	-41.6989050	1.00	2500m+100M
Rev_FP_137	23.5893943	-41.7126395	1.00	2500m+100M
Rev_FP_138	23.6022001	-41.7262774	1.00	2500m+100M
Rev_FP_139	23.6151926	-41.7398172	1.00	2500m+100M
Rev_FP_140	23.6283707	-41.7532574	1.00	2500m+100M
Rev_FP_141	23.6417331	-41.7665968	1.00	2500m+100M
Rev_FP_142	23.6552784	-41.7798339	1.00	2500m+100M
Rev_FP_143	23.6690055	-41.7929673	1.00	2500m+100M
Rev_FP_144	23.6829130	-41.8059957	1.00	2500m+100M
Rev_FP_145	23.6969994	-41.8189175	1.00	2500m+100M
Rev_FP_146	23.7112635	-41.8317316	1.00	2500m+100M
Rev_FP_147	23.7257039	-41.8444366	1.00	2500m+100M
Rev_FP_148	23.7403191	-41.8570311	1.00	2500m+100M
Rev_FP_149	23.7551078	-41.8695138	1.00	2500m+100M
Rev_FP_150	23.7700684	-41.8818834	1.00	2500m+100M
Rev_FP_151	23.7851994	-41.8941386	1.00	2500m+100M
Rev_FP_152	23.8004995	-41.9062781	1.00	2500m+100M
Rev_FP_153	23.8159670	-41.9183006	1.00	2500m+100M
Rev_FP_154	23.8316006	-41.9302049	1.00	2500m+100M
Rev_FP_155	23.8473985	-41.9419897	1.00	2500m+100M
Rev_FP_156	23.8633593	-41.9536538	1.00	2500m+100M
Rev_FP_157	23.8794813	-41.9651959	1.00	2500m+100M
Rev_FP_158	23.8957628	-41.9766147	1.00	2500m+100M
Rev_FP_159	23.9122023	-41.9879092	1.00	2500m+100M
Rev_FP_160	23.9287981	-41.9990780	1.00	2500m+100M

Fixed Point	Longitude	Latitude	Distance to Last FP (M)	Art 76 Method
Rev_FP_161	23.9455485	-42.0101201	1.00	2500m+100M
Rev_FP_162	23.9624519	-42.0210342	1.00	2500m+100M
Rev_FP_163	23.9795065	-42.0318192	1.00	2500m+100M
Rev_FP_164	23.9967106	-42.0424740	1.00	2500m+100M
Rev_FP_165	24.0140625	-42.0529974	1.00	2500m+100M
Rev_FP_166	24.0315604	-42.0633883	1.00	2500m+100M
Rev_FP_167	24.0492025	-42.0736456	1.00	2500m+100M
Rev_FP_168	24.0669869	-42.0837682	1.00	2500m+100M
Rev_FP_169	24.0849119	-42.0937550	1.00	2500m+100M
Rev_FP_170	24.1029757	-42.1036050	1.00	2500m+100M
Rev_FP_171	24.1211764	-42.1133172	1.00	2500m+100M
Rev_FP_172	24.1395121	-42.1228904	1.00	2500m+100M
Rev_FP_173	24.1579810	-42.1323238	1.00	2500m+100M
Rev_FP_174	24.1765811	-42.1416162	1.00	2500m+100M
Rev_FP_175	24.1953106	-42.1507667	1.00	2500m+100M
Rev_FP_176	24.2141674	-42.1597743	1.00	2500m+100M
Rev_FP_177	24.2331495	-42.1686381	1.00	2500m+100M
Rev_FP_178	24.2522550	-42.1773569	1.00	2500m+100M
Rev_FP_179	24.2714820	-42.1859300	1.00	2500m+100M
Rev_FP_180	24.2908282	-42.1943565	1.00	2500m+100M
Rev_FP_181	24.3102920	-42.2026355	1.00	2500m+100M
Rev_FP_182	24.3298712	-42.2107660	1.00	2500m+100M
Rev_FP_183	24.3495637	-42.2187473	1.00	2500m+100M
Rev_FP_184	24.3525347	-42.2199345	0.15	2500m+100M
Rev_FP_185	24.3693531	-42.2265983	0.85	2500m+100M
Rev_FP_186	24.3892494	-42.2343020	1.00	2500m+100M
Rev_FP_187	24.4092532	-42.2418539	1.00	2500m+100M
Rev_FP_188	24.4293623	-42.2492534	1.00	2500m+100M
Rev_FP_189	24.4495746	-42.2564996	1.00	2500m+100M
Rev_FP_190	24.4698880	-42.2635918	1.00	2500m+100M
Rev_FP_191	24.4903003	-42.2705290	1.00	2500m+100M
Rev_FP_192	24.5108094	-42.2773107	1.00	2500m+100M
Rev_FP_193	24.5314131	-42.2839361	1.00	2500m+100M
Rev_FP_194	24.5521092	-42.2904045	1.00	2500m+100M
Rev_FP_195	24.5728956	-42.2967151	1.00	2500m+100M
Rev_FP_196	24.5937699	-42.3028674	1.00	2500m+100M
Rev_FP_197	24.6147301	-42.3088606	1.00	2500m+100M
Rev_FP_198	24.6357739	-42.3146941	1.00	2500m+100M
Rev_FP_199	24.6568989	-42.3203673	1.00	2500m+100M
Rev_FP_200	25.7441339	-42.8937954	59.19	2500m+100M
Rev_FP_201	25.7601714	-42.9055812	1.00	2500m+100M
Rev_FP_202	25.7763745	-42.9172462	1.00	2500m+100M
Rev_FP_203	25.7927416	-42.9287892	1.00	2500m+100M
Rev_FP_204	25.8092711	-42.9402091	1.00	2500m+100M
Rev_FP_205	25.8259612	-42.9515045	1.00	2500m+100M
Rev_FP_206	25.8428103	-42.9626743	1.00	2500m+100M
Rev_FP_207	25.8598167	-42.9737172	1.00	2500m+100M
Rev_FP_208	25.8769786	-42.9846322	1.00	2500m+100M
Rev_FP_209	25.8942943	-42.9954180	1.00	2500m+100M
Rev_FP_210	25.9117620	-43.0060734	1.00	2500m+100M

Fixed Point	Longitude	Latitude	Distance to Last FP (M)	Art 76 Method
Rev_FP_211	25.9293800	-43.0165975	1.00	2500m+100M
Rev_FP_212	25.9471464	-43.0269890	1.00	2500m+100M
Rev_FP_213	25.9650596	-43.0372469	1.00	2500m+100M
Rev_FP_214	25.9831175	-43.0473700	1.00	2500m+100M
Rev_FP_215	26.0013185	-43.0573573	1.00	2500m+100M
Rev_FP_216	26.0196606	-43.0672077	1.00	2500m+100M
Rev_FP_217	26.0381419	-43.0769202	1.00	2500m+100M
Rev_FP_218	26.0567605	-43.0864937	1.00	2500m+100M
Rev_FP_219	26.0755145	-43.0959272	1.00	2500m+100M
Rev_FP_220	26.0944020	-43.1052197	1.00	2500m+100M
Rev_FP_221	26.1134211	-43.1143703	1.00	2500m+100M
Rev_FP_222	26.1325697	-43.1233779	1.00	2500m+100M
Rev_FP_223	26.1518458	-43.1322415	1.00	2500m+100M
Rev_FP_224	26.1712475	-43.1409602	1.00	2500m+100M
Rev_FP_225	26.1907726	-43.1495331	1.00	2500m+100M
Rev_FP_226	26.2104193	-43.1579594	1.00	2500m+100M
Rev_FP_227	26.2301855	-43.1662380	1.00	2500m+100M
Rev_FP_228	26.2500690	-43.1743680	1.00	2500m+100M
Rev_FP_229	26.2700677	-43.1823487	1.00	2500m+100M
Rev_FP_230	26.2901796	-43.1901791	1.00	2500m+100M
Rev_FP_231	26.3104025	-43.1978583	1.00	2500m+100M
Rev_FP_232	26.3307344	-43.2053857	1.00	2500m+100M
Rev_FP_233	26.3511732	-43.2127604	1.00	2500m+100M
Rev_FP_234	26.3717165	-43.2199816	1.00	2500m+100M
Rev_FP_235	26.3923624	-43.2270484	1.00	2500m+100M
Rev_FP_236	26.4131084	-43.2339602	1.00	2500m+100M
Rev_FP_237	26.4339526	-43.2407162	1.00	2500m+100M
Rev_FP_238	26.4548926	-43.2473157	1.00	2500m+100M
Rev_FP_239	26.4759264	-43.2537580	1.00	2500m+100M
Rev_FP_240	26.4970516	-43.2600423	1.00	2500m+100M
Rev_FP_241	26.5182658	-43.2661680	1.00	2500m+100M
Rev_FP_242	26.5395671	-43.2721345	1.00	2500m+100M
Rev_FP_243	26.5609531	-43.2779410	1.00	2500m+100M
Rev_FP_244	26.5824213	-43.2835870	1.00	2500m+100M
Rev_FP_245	26.6039696	-43.2890719	1.00	2500m+100M
Rev_FP_246	26.6255958	-43.2943951	1.00	2500m+100M
Rev_FP_247	26.6472974	-43.2995559	1.00	2500m+100M
Rev_FP_248	26.6690721	-43.3045539	1.00	2500m+100M
Rev_FP_249	26.6909176	-43.3093884	1.00	2500m+100M
Rev_FP_250	26.7128317	-43.3140591	1.00	2500m+100M
Rev_FP_251	26.7348118	-43.3185653	1.00	2500m+100M
Rev_FP_252	26.7568556	-43.3229066	1.00	2500m+100M
Rev_FP_253	26.7789610	-43.3270825	1.00	2500m+100M
Rev_FP_254	26.8011253	-43.3310925	1.00	2500m+100M
Rev_FP_255	26.8233463	-43.3349363	1.00	2500m+100M
Rev_FP_256	26.8456215	-43.3386135	1.00	2500m+100M
Rev_FP_257	26.8679486	-43.3421235	1.00	2500m+100M
Rev_FP_258	26.8903251	-43.3454660	1.00	2500m+100M
Rev_FP_259	26.9127487	-43.3486408	1.00	2500m+100M
Rev_FP_260	26.9352168	-43.3516473	1.00	2500m+100M



Fixed Point	Longitude	Latitude	Distance to Last FP (M)	Art 76 Method
Rev_FP_261	26.9577271	-43.3544854	1.00	2500m+100M
Rev_FP_262	26.9802773	-43.3571547	1.00	2500m+100M
Rev_FP_263	27.0028646	-43.3596548	1.00	2500m+100M
Rev_FP_264	27.0254870	-43.3619857	1.00	2500m+100M
Rev_FP_265	27.0481418	-43.3641469	1.00	2500m+100M
Rev_FP_266	27.0521605	-43.3645122	0.18	2500m+100M
Rev_FP_267	27.0708247	-43.3661495	0.82	2500m+100M
Rev_FP_268	27.0935350	-43.3679845	1.00	2500m+100M
Rev_FP_269	27.1162705	-43.3696493	1.00	2500m+100M
Rev_FP_270	27.1390288	-43.3711436	1.00	2500m+100M
Rev_FP_271	27.1618076	-43.3724674	1.00	2500m+100M
Rev_FP_272	27.1846042	-43.3736204	1.00	2500m+100M
Rev_FP_273	27.2074163	-43.3746026	1.00	2500m+100M
Rev_FP_274	27.2302413	-43.3754138	1.00	2500m+100M
Rev_FP_275	27.2530768	-43.3760540	1.00	2500m+100M
Rev_FP_276	27.2759203	-43.3765230	1.00	2500m+100M
Rev_FP_277	27.2987694	-43.3768209	1.00	2500m+100M
Rev_FP_278	27.3216216	-43.3769475	1.00	2500m+100M
Rev_FP_279	27.3444742	-43.3769032	1.00	2500m+100M
Rev_FP_280	27.3673251	-43.3766872	1.00	2500m+100M
Rev_FP_281	27.3901716	-43.3763003	1.00	2500m+100M
Rev_FP_282	27.4130113	-43.3757422	1.00	2500m+100M
Rev_FP_283	27.4358416	-43.3750130	1.00	2500m+100M
Rev_FP_284	27.4586601	-43.3741128	1.00	2500m+100M
Rev_FP_285	27.4814645	-43.3730417	1.00	2500m+100M
Rev_FP_286	27.4937516	-43.3723934	0.54	2500m+100M
Rev_FP_287	27.5165293	-43.3710595	1.00	2500m+100M
Rev_FP_288	27.5392863	-43.3695550	1.00	2500m+100M
Rev_FP_289	27.5620204	-43.3678800	1.00	2500m+100M
Rev_FP_290	27.5847291	-43.3660356	1.00	2500m+100M
Rev_FP_291	27.6074098	-43.3640197	1.00	2500m+100M
Rev_FP_292	27.6300602	-43.3618347	1.00	2500m+100M
Rev_FP_293	27.6526779	-43.3594801	1.00	2500m+100M
Rev_FP_294	27.6752604	-43.3569562	1.00	2500m+100M
Rev_FP_295	27.6978051	-43.3542633	1.00	2500m+100M
Rev_FP_296	27.7203098	-43.3514015	1.00	2500m+100M
Rev_FP_297	27.7427719	-43.3483718	1.00	2500m+100M
Rev_FP_298	27.7651889	-43.3451731	1.00	2500m+100M
Rev_FP_299	27.7875587	-43.3418070	1.00	2500m+100M
Rev_FP_300	27.8098787	-43.3382736	1.00	2500m+100M
Rev_FP_301	27.8321466	-43.3345730	1.00	2500m+100M
Rev_FP_302	27.8543597	-43.3307059	1.00	2500m+100M
Rev_FP_303	27.8765160	-43.3266726	1.00	2500m+100M
Rev_FP_304	27.8986128	-43.3224733	1.00	2500m+100M
Rev_FP_305	27.9114321	-43.3199559	0.58	2500m+100M
Rev_FP_306	27.9206620	-43.3181469	0.42	2500m+100M
Rev_FP_307	27.9426677	-43.3137081	1.00	2500m+100M
Rev_FP_308	27.9646082	-43.3091046	1.00	2500m+100M
Rev_FP_309	27.9864813	-43.3043370	1.00	2500m+100M
Rev_FP_310	28.0082844	-43.2994058	1.00	2500m+100M

Fixed Point	Longitude	Latitude	Distance to Last FP (M)	Art 76 Method
Rev_FP_311	28.0300154	-43.2943115	1.00	2500m+100M
Rev_FP_312	28.0516718	-43.2890547	1.00	2500m+100M
Rev_FP_313	28.0732514	-43.2836359	1.00	2500m+100M
Rev_FP_314	28.0947517	-43.2780557	1.00	2500m+100M
Rev_FP_315	28.0971866	-43.2774123	0.11	2500m+100M
Rev_FP_316	28.1163784	-43.2727453	0.89	2500m+100M
Rev_FP_317	28.1379533	-43.2673284	1.00	2500m+100M
Rev_FP_318	28.1594487	-43.2617497	1.00	2500m+100M
Rev_FP_319	28.1808632	-43.2560110	1.00	2500m+100M
Rev_FP_320	28.2021938	-43.2501118	1.00	2500m+100M
Rev_FP_321	28.2031833	-43.2498337	0.05	2500m+100M
Rev_FP_322	28.2234438	-43.2440629	0.95	2500m+100M
Rev_FP_323	28.2446060	-43.2378555	1.00	2500m+100M
Rev_FP_324	28.2656777	-43.2314898	1.00	2500m+100M
Rev_FP_325	28.2866571	-43.2249667	1.00	2500m+100M
Rev_FP_326	28.3075417	-43.2182867	1.00	2500m+100M
Rev_FP_327	28.3145217	-43.2160121	0.34	2500m+100M
Rev_FP_328	28.3283913	-43.2115526	0.66	2500m+100M
Rev_FP_329	28.3491752	-43.2047139	1.00	2500m+100M
Rev_FP_330	28.3698597	-43.1977199	1.00	2500m+100M
Rev_FP_331	28.3904429	-43.1905712	1.00	2500m+100M
Rev_FP_332	28.4109225	-43.1832686	1.00	2500m+100M
Rev_FP_333	28.4312963	-43.1758129	1.00	2500m+100M
Rev_FP_334	28.4515623	-43.1682050	1.00	2500m+100M
Rev_FP_335	28.4717183	-43.1604455	1.00	2500m+100M
Rev_FP_336	28.4917621	-43.1525354	1.00	2500m+100M
Rev_FP_337	28.5116918	-43.1444755	1.00	2500m+100M
Rev_FP_338	28.5315051	-43.1362667	1.00	2500m+100M
Rev_FP_339	28.5512000	-43.1279098	1.00	2500m+100M
Rev_FP_340	28.5707745	-43.1194057	1.00	2500m+100M
Rev_FP_341	28.5902264	-43.1107554	1.00	2500m+100M
Rev_FP_342	28.6095538	-43.1019598	1.00	2500m+100M
Rev_FP_343	28.6287546	-43.0930198	1.00	2500m+100M
Rev_FP_344	28.6478269	-43.0839364	1.00	2500m+100M
Rev_FP_345	28.6667687	-43.0747106	1.00	2500m+100M
Rev_FP_346	28.6855780	-43.0653432	1.00	2500m+100M
Rev_FP_347	28.7042529	-43.0558354	1.00	2500m+100M
Rev_FP_348	28.7227914	-43.0461882	1.00	2500m+100M
Rev_FP_349	28.7411916	-43.0364025	1.00	2500m+100M
Rev_FP_350	28.7594517	-43.0264794	1.00	2500m+100M
Rev_FP_351	28.7775698	-43.0164200	1.00	2500m+100M
Rev_FP_352	28.7955438	-43.0062254	1.00	2500m+100M
Rev_FP_353	28.8133722	-42.9958966	1.00	2500m+100M
Rev_FP_354	28.8310531	-42.9854347	1.00	2500m+100M
Rev_FP_355	28.8485845	-42.9748409	1.00	2500m+100M
Rev_FP_356	28.8659647	-42.9641163	1.00	2500m+100M
Rev_FP_357	28.8831921	-42.9532619	1.00	2500m+100M
Rev_FP_358	28.9002648	-42.9422790	1.00	2500m+100M
Rev_FP_359	28.9171812	-42.9311688	1.00	2500m+100M
Rev_FP_360	28.9339393	-42.9199324	1.00	2500m+100M

Fixed Point	Longitude	Latitude	Distance to Last FP (M)	Art 76 Method
Rev_FP_361	28.9505376	-42.9085711	1.00	2500m+100M
Rev_FP_362	28.9669746	-42.8970858	1.00	2500m+100M
Rev_FP_363	28.9832485	-42.8854780	1.00	2500m+100M
Rev_FP_364	28.9993577	-42.8737488	1.00	2500m+100M
Rev_FP_365	29.0153004	-42.8618996	1.00	2500m+100M
Rev_FP_366	29.0310752	-42.8499316	1.00	2500m+100M
Rev_FP_367	29.0466804	-42.8378459	1.00	2500m+100M
Rev_FP_368	29.0621147	-42.8256439	1.00	2500m+100M
Rev_FP_369	29.0773765	-42.8133268	1.00	2500m+100M
Rev_FP_370	29.0924642	-42.8008960	1.00	2500m+100M
Rev_FP_371	29.1073763	-42.7883528	1.00	2500m+100M
Rev_FP_372	29.1221114	-42.7756985	1.00	2500m+100M
Rev_FP_373	29.1366679	-42.7629345	1.00	2500m+100M
Rev_FP_374	29.1510446	-42.7500620	1.00	2500m+100M
Rev_FP_375	29.1652399	-42.7370826	1.00	2500m+100M
Rev_FP_376	29.4585690	-42.4626541	20.97	2500m+100M
Rev_FP_377	29.4721443	-42.4493531	1.00	2500m+100M
Rev_FP_378	29.4855337	-42.4359506	1.00	2500m+100M
Rev_FP_379	29.4987358	-42.4224481	1.00	2500m+100M
Rev_FP_380	29.5117494	-42.4088470	1.00	2500m+100M
Rev_FP_381	29.5216351	-42.3982899	0.77	FOS+60M
Rev_FP_382	29.8626565	-41.8984634	33.62	FOS+60M
Rev_FP_383	29.8725404	-41.8747844	1.49	2500m+100M
Rev_FP_384	29.8788976	-41.8588017	1.00	2500m+100M
Rev_FP_385	29.8850376	-41.8427720	1.00	2500m+100M
Rev_FP_386	29.8909600	-41.8266967	1.00	2500m+100M
Rev_FP_387	29.8966643	-41.8105776	1.00	2500m+100M
Rev_FP_388	29.9021507	-41.7944166	1.00	2500m+100M
Rev_FP_389	29.9037947	-41.7894345	0.31	2500m+100M
Rev_FP_390	29.9075828	-41.7782455	0.69	2500m+100M
Rev_FP_391	29.9128700	-41.7620476	1.00	2500m+100M
Rev_FP_392	29.9179380	-41.7458107	1.00	2500m+100M
Rev_FP_393	29.9227865	-41.7295365	1.00	2500m+100M
Rev_FP_394	29.9274152	-41.7132265	1.00	2500m+100M
Rev_FP_395	29.9318238	-41.6968824	1.00	2500m+100M
Rev_FP_396	29.9360119	-41.6805060	1.00	2500m+100M
Rev_FP_397	29.9399794	-41.6640987	1.00	2500m+100M
Rev_FP_398	29.9437260	-41.6476624	1.00	2500m+100M
Rev_FP_399	29.9472514	-41.6311987	1.00	2500m+100M
Rev_FP_400	29.9505556	-41.6147092	1.00	2500m+100M
Rev_FP_401	29.9536383	-41.5981956	1.00	2500m+100M
Rev_FP_402	29.9549187	-41.5908006	0.45	FOS+60M
FP_491	31.2639732	-41.7072372	1.00	2500m+100M
FP_492	31.2796860	-41.7190399	1.00	2500m+100M
FP_493	31.2955666	-41.7307281	1.00	2500m+100M
FP_494	31.3116035	-41.7422905	1.00	2500m+100M
FP_495	31.3278008	-41.7537308	1.00	2500m+100M
FP_496	31.3441544	-41.7650490	1.00	2500m+100M
FP_497	31.3606682	-41.7762375	1.00	2500m+100M
FP_498	31.3773346	-41.7873039	1.00	2500m+100M

Fixed Point	Longitude	Latitude	Distance to Last FP (M)	Art 76 Method
FP_499	31.3941536	-41.7982407	1.00	2500m+100M
FP_500	31.4111214	-41.8090515	1.00	2500m+100M
FP_501	31.4374809	-41.8253746	1.54	2500m+100M
FP_502	31.4673271	-41.8317642	1.39	FOS+60M
FP_503	31.4888916	-41.8360062	1.00	FOS+60M
FP_504	31.5105476	-41.8399734	1.00	FOS+60M
FP_505	31.5322952	-41.8436661	1.00	FOS+60M
FP_506	31.5541191	-41.8470802	1.00	FOS+60M
FP_507	31.5760231	-41.8502235	1.00	FOS+60M
FP_508	31.5979919	-41.8530846	1.00	FOS+60M
FP_509	31.6200256	-41.8556709	1.00	FOS+60M
FP_510	31.6421165	-41.8579750	1.00	FOS+60M
FP_511	31.6642532	-41.8600006	1.00	FOS+60M
FP_512	31.6864395	-41.8617477	1.00	FOS+60M
FP_513	31.7086563	-41.8632088	1.00	FOS+60M
FP_514	31.7309074	-41.8643951	1.00	FOS+60M
FP_515	31.7531815	-41.8652954	1.00	FOS+60M
FP_516	31.7754745	-41.8659134	1.00	FOS+60M
FP_517	31.7977753	-41.8662529	1.00	FOS+60M
FP_518	31.8200836	-41.8663063	1.00	FOS+60M
FP_519	33.0054741	-41.8362999	53.18	FOS+60M
FP_520	33.0277596	-41.8358040	1.00	FOS+60M
FP_521	33.0500298	-41.8350258	1.00	FOS+60M
FP_522	33.0722809	-41.8339653	1.00	FOS+60M
FP_523	33.0945053	-41.8326225	1.00	FOS+60M
FP_524	33.1166954	-41.8309975	1.00	FOS+60M
FP_525	33.1388474	-41.8290939	1.00	FOS+60M
FP_526	33.1609459	-41.8269119	1.00	FOS+60M
FP_527	33.1829948	-41.8244476	1.00	FOS+60M
FP_528	33.2049828	-41.8217049	1.00	FOS+60M
FP_529	33.2269058	-41.8186836	1.00	FOS+60M
FP_530	33.2487564	-41.8153877	1.00	FOS+60M
FP_531	33.2705231	-41.8118172	1.00	FOS+60M
FP_532	33.2922096	-41.8079681	1.00	FOS+60M
FP_533	33.3138046	-41.8038445	1.00	FOS+60M
FP_534	33.3353004	-41.7994499	1.00	FOS+60M
FP_535	33.3566933	-41.7947845	1.00	FOS+60M
FP_536	33.3779755	-41.7898483	1.00	FOS+60M
FP_537	33.3991432	-41.7846451	1.00	FOS+60M
FP_538	33.4201889	-41.7791710	1.00	FOS+60M
FP_539	33.4411049	-41.7734337	1.00	FOS+60M
FP_540	33.4618874	-41.7674332	1.00	FOS+60M
FP_541	33.4825287	-41.7611694	1.00	FOS+60M
FP_542	33.5030212	-41.7546463	1.00	FOS+60M
FP_543	33.5233612	-41.7478638	1.00	FOS+60M
FP_544	33.5435448	-41.7408257	1.00	FOS+60M
FP_545	33.5635643	-41.7335320	1.00	FOS+60M
FP_546	33.5834122	-41.7259865	1.00	FOS+60M
FP_547	33.6030884	-41.7181931	1.00	FOS+60M
FP_548	33.6225815	-41.7101479	1.00	FOS+60M

Fixed Point	Longitude	Latitude	Distance to Last FP (M)	Art 76 Method
FP_549	33.6418877	-41.7018623	1.00	FOS+60M
FP_550	33.6609993	-41.6933289	1.00	FOS+60M
FP_551	33.6799164	-41.6845589	1.00	FOS+60M
FP_552	33.6986313	-41.6755447	1.00	FOS+60M
FP_553	33.7171364	-41.6663017	1.00	FOS+60M
FP_554	33.7354317	-41.6568184	1.00	FOS+60M
FP_555	33.7535095	-41.6471100	1.00	FOS+60M
FP_556	33.7713623	-41.6371727	1.00	FOS+60M
FP_557	33.7889824	-41.6270103	1.00	FOS+60M
FP_558	33.8063698	-41.6166267	1.00	FOS+60M
FP_559	33.8235207	-41.6060257	1.00	FOS+60M
FP_560	33.8404274	-41.5952110	1.00	FOS+60M
FP_561	33.8570862	-41.5841789	1.00	FOS+60M
FP_562	33.8734894	-41.5729408	1.00	FOS+60M
FP_563	33.8896408	-41.5614967	1.00	FOS+60M
FP_564	33.9055252	-41.5498466	1.00	FOS+60M
FP_565	33.9211464	-41.5379982	1.00	FOS+60M
FP_566	33.9364967	-41.5259590	1.00	FOS+60M
FP_567	33.9515686	-41.5137215	1.00	FOS+60M
FP_568	33.9663620	-41.5012970	1.00	FOS+60M
FP_569	33.9808769	-41.4886856	1.00	FOS+60M
FP_570	33.9951019	-41.4758949	1.00	FOS+60M
FP_571	34.0090370	-41.4629250	1.00	FOS+60M
FP_572	34.0226746	-41.4497795	1.00	FOS+60M
FP_573	34.0360184	-41.4364624	1.00	FOS+60M
FP_574	34.0490570	-41.4229813	1.00	FOS+60M
FP_575	34.0617905	-41.4093323	1.00	FOS+60M
FP_576	34.0742111	-41.3955269	1.00	FOS+60M
FP_577	34.0863228	-41.3815689	1.00	FOS+60M
FP_578	34.0981178	-41.3674583	1.00	FOS+60M
FP_579	34.1095924	-41.3531990	1.00	FOS+60M
FP_580	34.1207504	-41.3387947	1.00	FOS+60M
FP_581	34.1315804	-41.3242569	1.00	FOS+60M
FP_582	34.1420784	-41.3095818	1.00	FOS+60M
FP_583	34.1522522	-41.2947731	1.00	FOS+60M
FP_584	34.1620903	-41.2798386	1.00	FOS+60M
FP_585	34.1715927	-41.2647820	1.00	FOS+60M
FP_586	34.1807594	-41.2496071	1.00	FOS+60M
FP_587	35.0044632	-40.4924393	58.88	FOS+60M
FP_588	35.0161972	-40.4678154	1.57	2500m+100M
FP_589	35.0152016	-40.4511566	1.00	2500m+100M
FP_590	35.0139885	-40.4345055	1.00	2500m+100M
FP_591	35.0125542	-40.4178619	1.00	2500m+100M
FP_592	35.0109062	-40.4012337	1.00	2500m+100M
FP_593	35.0090446	-40.3846169	1.00	2500m+100M
FP_594	35.0069618	-40.3680153	1.00	2500m+100M
FP_595	35.0046654	-40.3514290	1.00	2500m+100M
FP_596	35.0021553	-40.3348618	1.00	2500m+100M
FP_597	34.9994278	-40.3183136	1.00	2500m+100M
FP_598	34.9964867	-40.3017883	1.00	2500m+100M

Fixed Point	Longitude	Latitude	Distance to Last FP (M)	Art 76 Method
FP_599	34.9933319	-40.2852859	1.00	2500m+100M
FP_600	34.9899597	-40.2688103	1.00	2500m+100M
FP_601	34.9863777	-40.2523575	1.00	2500m+100M
FP_602	34.9825821	-40.2359352	1.00	2500m+100M
FP_603	34.9785767	-40.2195396	1.00	2500m+100M
FP_604	34.9743576	-40.2031784	1.00	2500m+100M
FP_605	35.2213440	-39.2405472	58.83	2500m+100M
FP_606	35.2299156	-39.2252541	1.00	2500m+100M
FP_607	35.2382851	-39.2098961	1.00	2500m+100M
FP_608	35.2464523	-39.1944695	1.00	2500m+100M
FP_609	35.2544212	-39.1789818	1.00	2500m+100M
FP_610	35.2621841	-39.1634331	1.00	2500m+100M
FP_611	35.2697411	-39.1478271	1.00	2500m+100M
FP_612	35.2770996	-39.1321602	1.00	2500m+100M
FP_613	35.2842484	-39.1164322	1.00	2500m+100M
FP_614	35.2911949	-39.1006546	1.00	2500m+100M
FP_615	35.2979355	-39.0848198	1.00	2500m+100M
FP_616	35.3044662	-39.0689354	1.00	2500m+100M
FP_617	35.3107948	-39.0529976	1.00	2500m+100M
FP_618	35.3169136	-39.0370140	1.00	2500m+100M
FP_619	35.3228264	-39.0209808	1.00	2500m+100M
FP_620	35.3285255	-39.0049019	1.00	2500m+100M
FP_621	35.3340225	-38.9887810	1.00	2500m+100M
FP_622	35.3393059	-38.9726143	1.00	2500m+100M
FP_623	35.3443794	-38.9564133	1.00	2500m+100M
FP_624	35.3492432	-38.9401703	1.00	2500m+100M
FP_625	35.3539009	-38.9238853	1.00	2500m+100M
FP_626	35.3583450	-38.9075699	1.00	2500m+100M
FP_627	35.3625755	-38.8912201	1.00	2500m+100M
FP_628	35.3666000	-38.8748360	1.00	2500m+100M
FP_629	35.3704071	-38.8584175	1.00	2500m+100M
FP_630	35.3740082	-38.8419762	1.00	2500m+100M
FP_631	35.3773918	-38.8255081	1.00	2500m+100M
FP_632	35.3805656	-38.8090096	1.00	2500m+100M
FP_633	35.3823128	-38.7994232	0.58	2500m+100M
FP_634	35.3835487	-38.7924881	0.42	2500m+100M
FP_635	35.3863487	-38.7759476	1.00	2500m+100M
FP_636	35.3889313	-38.7593880	1.00	2500m+100M
FP_637	35.3913040	-38.7428093	1.00	2500m+100M
FP_638	35.3934631	-38.7262154	1.00	2500m+100M
FP_639	35.3954086	-38.7096024	1.00	2500m+100M
FP_640	35.3971443	-38.6929741	1.00	2500m+100M
FP_641	35.4363785	-38.2277908	27.94	2500m+100M
FP_642	35.4372711	-38.2111206	1.00	2500m+100M
FP_643	35.4379539	-38.1944466	1.00	2500m+100M
FP_644	35.4384232	-38.1777649	1.00	2500m+100M
FP_645	35.4386826	-38.1610832	1.00	2500m+100M
FP_646	35.4387283	-38.1443977	1.00	2500m+100M
FP_647	35.4385643	-38.1277122	1.00	2500m+100M
FP_648	35.4381905	-38.1110306	1.00	2500m+100M

Fixed Point	Longitude	Latitude	Distance to Last FP (M)	Art 76 Method
FP_649	35.4376030	-38.0943527	1.00	2500m+100M
FP_650	35.4368095	-38.0776787	1.00	2500m+100M
FP_651	35.4358025	-38.0610123	1.00	2500m+100M
FP_652	35.4345856	-38.0443573	1.00	2500m+100M
FP_653	35.4331589	-38.0277100	1.00	2500m+100M
FP_654	35.4315224	-38.0110741	1.00	2500m+100M
FP_655	35.4296761	-37.9944534	1.00	2500m+100M
FP_656	35.4276199	-37.9778481	1.00	2500m+100M
FP_657	35.4253578	-37.9612579	1.00	2500m+100M
FP_658	35.4228859	-37.9446869	1.00	2500m+100M
FP_659	35.4202042	-37.9281387	1.00	2500m+100M
FP_660	35.4173164	-37.9116096	1.00	2500m+100M
FP_661	35.4142227	-37.8951035	1.00	2500m+100M
FP_662	35.4109230	-37.8786240	1.00	2500m+100M
FP_663	35.4074173	-37.8621750	1.00	2500m+100M
FP_664	35.4037056	-37.8457489	1.00	2500m+100M
FP_665	35.3997841	-37.8293571	1.00	2500m+100M
FP_666	35.3956642	-37.8129959	1.00	2500m+100M
FP_667	35.3913383	-37.7966652	1.00	2500m+100M
FP_668	35.3868065	-37.7803726	1.00	2500m+100M
FP_669	35.3820724	-37.7641182	1.00	2500m+100M
FP_670	35.3771400	-37.7478981	1.00	2500m+100M
FP_671	35.3720016	-37.7317162	1.00	2500m+100M
FP_672	35.3666649	-37.7155800	1.00	2500m+100M
FP_673	35.3611221	-37.6994820	1.00	2500m+100M
FP_674	35.3553085	-37.6832237	1.01	2500m+100M
FP_675	35.3553848	-37.6834335	0.01	2500m+100M
FP_676	35.3494949	-37.6674156	1.00	2500m+100M
FP_677	35.3434067	-37.6514473	1.00	2500m+100M
FP_678	35.3371201	-37.6355286	1.00	2500m+100M
FP_679	35.3306351	-37.6196594	1.00	2500m+100M
FP_680	35.3239517	-37.6038437	1.00	2500m+100M
FP_681	35.3170776	-37.5880775	1.00	2500m+100M
FP_682	35.3100052	-37.5723686	1.00	2500m+100M
FP_683	35.3027420	-37.5567169	1.00	2500m+100M
FP_684	35.3004341	-37.5518417	0.31	2500m+100M
FP_685	35.2952957	-37.5411224	0.69	2500m+100M
FP_686	35.2876587	-37.5255814	1.00	2500m+100M
FP_687	35.2798347	-37.5101051	1.00	2500m+100M
FP_688	35.2718163	-37.4946899	1.00	2500m+100M
FP_689	35.2636108	-37.4793396	1.00	2500m+100M
FP_690	35.2552147	-37.4640503	1.00	2500m+100M
FP_691	35.2466316	-37.4488335	1.00	2500m+100M
FP_692	35.2378616	-37.4336815	1.00	2500m+100M
FP_693	35.2289047	-37.4185982	1.00	2500m+100M
FP_694	35.2197647	-37.4035912	1.00	2500m+100M
FP_695	35.2104416	-37.3886528	1.00	2500m+100M
FP_696	35.4979172	-36.4293861	59.12	2500m+100M
FP_697	36.2798424	-36.1367111	41.79	2500m+100M
FP_698	36.2984161	-36.1295280	1.00	2500m+100M

Fixed Point	Longitude	Latitude	Distance to Last FP (M)	Art 76 Method
FP_699	36.3168945	-36.1221924	1.00	2500m+100M
FP_700	36.3352814	-36.1147003	1.00	2500m+100M
FP_701	36.3535690	-36.1070633	1.00	2500m+100M
FP_702	36.3621368	-36.1034164	0.47	2500m+100M
FP_703	36.3717575	-36.0992737	0.53	2500m+100M
FP_704	36.3898506	-36.0913391	1.00	2500m+100M
FP_705	36.4078407	-36.0832520	1.00	2500m+100M
FP_706	36.4257240	-36.0750198	1.00	2500m+100M
FP_707	36.4435043	-36.0666351	1.00	2500m+100M
FP_708	36.4611740	-36.0581093	1.00	2500m+100M
FP_709	36.4787331	-36.0494347	1.00	2500m+100M
FP_710	36.4961853	-36.0406189	1.00	2500m+100M
FP_711	36.5135193	-36.0316544	1.00	2500m+100M
FP_712	36.5307426	-36.0225525	1.00	2500m+100M
FP_713	36.5478477	-36.0133057	1.00	2500m+100M
FP_714	36.5648308	-36.0039177	1.00	2500m+100M
FP_715	36.5816956	-35.9943924	1.00	2500m+100M
FP_716	36.5984383	-35.9847260	1.00	2500m+100M
FP_717	36.6150589	-35.9749184	1.00	2500m+100M
FP_718	36.6315536	-35.9649811	1.00	2500m+100M
FP_719	36.6337280	-35.9636536	0.13	2500m+100M
FP_720	36.6479721	-35.9549637	0.87	2500m+100M
FP_721	36.6642761	-35.9448204	1.00	2500m+100M
FP_722	36.6804504	-35.9345436	1.00	2500m+100M
FP_723	36.6964912	-35.9241333	1.00	2500m+100M
FP_724	36.7123985	-35.9135895	1.00	2500m+100M
FP_725	36.7281723	-35.9029160	1.00	2500m+100M
FP_726	36.7438087	-35.8921127	1.00	2500m+100M
FP_727	36.7593079	-35.8811798	1.00	2500m+100M
FP_728	36.7744102	-35.8703117	0.98	2500m+100M
FP_729	36.7746696	-35.8701210	0.02	2500m+100M
FP_730	36.7757530	-35.8693352	0.07	2500m+100M
FP_731	36.7899361	-35.8589783	0.93	2500m+100M
FP_732	36.8050613	-35.8477097	1.00	2500m+100M
FP_733	36.8200455	-35.8363190	1.00	2500m+100M
FP_734	36.8348808	-35.8248062	1.00	2500m+100M
FP_735	36.8495750	-35.8131676	1.00	2500m+100M
FP_736	36.8641167	-35.8014107	1.00	2500m+100M
FP_737	36.8785095	-35.7895355	1.00	2500m+100M
FP_738	36.8927536	-35.7775421	1.00	2500m+100M
FP_739	36.9068489	-35.7654266	1.00	2500m+100M
FP_740	36.9207840	-35.7532005	1.00	2500m+100M
FP_741	36.9345703	-35.7408562	1.00	2500m+100M
FP_742	36.9481964	-35.7284012	1.00	2500m+100M
FP_743	36.9616623	-35.7158318	1.00	2500m+100M
FP_744	36.9749718	-35.7031555	1.00	2500m+100M
FP_745	36.9881248	-35.6903648	1.00	2500m+100M
FP_746	37.0011101	-35.6774712	1.00	2500m+100M
FP_747	37.0139389	-35.6644669	1.00	2500m+100M
FP_748	37.0265999	-35.6513557	1.00	2500m+100M



Fixed Point	Longitude	Latitude	Distance to Last FP (M)	Art 76 Method
FP_749	37.0390968	-35.6381454	1.00	2500m+100M
FP_750	37.0514259	-35.6248283	1.00	2500m+100M
FP_751	37.0635910	-35.6114120	1.00	2500m+100M
FP_752	37.0755806	-35.5978966	1.00	2500m+100M
FP_753	37.0874062	-35.5842819	1.00	2500m+100M
FP_754	37.0990562	-35.5705719	1.00	2500m+100M
FP_755	37.1105347	-35.5567627	1.00	2500m+100M
FP_756	37.1218414	-35.5428658	1.00	2500m+100M
FP_757	37.1329727	-35.5288696	1.00	2500m+100M
FP_758	37.1329727	-35.5288696	0.00	2500m+100M
FP_759	37.1439362	-35.5147896	1.00	2500m+100M
FP_760	37.1547241	-35.5006180	1.00	2500m+100M
FP_761	37.1653366	-35.4863548	1.00	2500m+100M
FP_762	37.1757660	-35.4720078	1.00	2500m+100M
FP_763	37.1860199	-35.4575768	1.00	2500m+100M
FP_764	37.1960907	-35.4430618	1.00	2500m+100M
FP_765	37.2059784	-35.4284630	1.00	2500m+100M
FP_766	37.2105293	-35.4216270	0.47	2500m+100M
FP_767	37.2157745	-35.4138184	0.53	2500m+100M
FP_768	37.2254601	-35.3991318	1.00	2500m+100M
FP_769	37.2349625	-35.3843613	1.00	2500m+100M
FP_770	37.2442818	-35.3695145	1.00	2500m+100M
FP_771	37.2534142	-35.3545914	1.00	2500m+100M
FP_772	37.2544556	-35.3528671	0.12	2500m+100M
FP_773	37.2625275	-35.3396645	0.88	2500m+100M
FP_774	37.2714806	-35.3246689	1.00	2500m+100M
FP_775	37.2729797	-35.3221169	0.17	2500m+100M
FP_776	37.2802849	-35.3096161	0.83	2500m+100M
FP_777	37.2889099	-35.2944946	1.00	2500m+100M
FP_778	37.2973518	-35.2793045	1.00	2500m+100M
FP_779	37.3001404	-35.2741890	0.34	2500m+100M
FP_780	37.3228188	-35.2553711	1.59	FOS+60M
FP_781	37.3276024	-35.2391434	1.00	FOS+60M
FP_782	37.3320541	-35.2228546	1.00	FOS+60M
FP_783	37.3361702	-35.2065086	1.00	FOS+60M
FP_784	37.3399544	-35.1901093	1.00	FOS+60M
FP_785	37.3434029	-35.1736565	1.00	FOS+60M
FP_786	37.3465157	-35.1571579	1.00	FOS+60M
FP_787	37.3492928	-35.1406212	1.00	FOS+60M
FP_788	37.7781525	-34.2905731	55.16	FOS+60M
FP_789	37.7860184	-34.2752075	1.00	FOS+60M
FP_790	37.7935715	-34.2597313	1.00	FOS+60M
FP_791	37.8008118	-34.2441559	1.00	FOS+60M
FP_792	37.8077316	-34.2284851	1.00	FOS+60M
FP_793	37.8143387	-34.2127151	1.00	FOS+60M
FP_794	37.8206253	-34.1968575	1.00	FOS+60M
FP_795	37.8265877	-34.1809158	1.00	FOS+60M
FP_796	37.8322296	-34.1648903	1.00	FOS+60M
FP_797	37.8375473	-34.1487923	1.00	FOS+60M
FP_798	37.8425407	-34.1326218	1.00	FOS+60M

Fixed Point	Longitude	Latitude	Distance to Last FP (M)	Art 76 Method
FP_799	37.8472061	-34.1163826	1.00	FOS+60M
FP_800	37.8515434	-34.1000786	1.00	FOS+60M
FP_801	37.8555527	-34.0837212	1.00	FOS+60M
FP_802	37.8592300	-34.0673065	1.00	FOS+60M
FP_803	37.8625793	-34.0508461	1.00	FOS+60M
FP_804	37.8655968	-34.0343399	1.00	FOS+60M
FP_805	38.0153580	-33.3515778	41.57	FOS+60M
FP_806	38.0186882	-33.3351173	1.00	FOS+60M
FP_807	38.0216866	-33.3186111	1.00	FOS+60M
FP_808	38.0243607	-33.3020630	1.00	FOS+60M
FP_809	38.0267029	-33.2854767	1.00	FOS+60M
FP_810	38.0287132	-33.2688637	1.00	FOS+60M
FP_811	38.0303917	-33.2522240	1.00	FOS+60M
FP_812	38.0317421	-33.2355652	1.00	FOS+60M
FP_813	38.0327606	-33.2188873	1.00	FOS+60M
FP_814	38.0334473	-33.2021980	1.00	FOS+60M
FP_815	38.0338058	-33.1855011	1.00	FOS+60M
FP_816	38.0338326	-33.1688042	1.00	FOS+60M
FP_817	38.0335274	-33.1521072	1.00	FOS+60M
FP_818	38.0328903	-33.1354179	1.00	FOS+60M
FP_819	38.0319252	-33.1187401	1.00	FOS+60M
FP_820	38.0306282	-33.1020775	1.00	FOS+60M
FP_821	38.2743568	-32.7598915	23.90	2500m+100M
FP_822	38.2768402	-32.7491302	0.66	2500m+100M
FP_823	38.2804222	-32.7327118	1.00	2500m+100M
FP_824	38.2838135	-32.7162552	1.00	2500m+100M
FP_825	38.2870064	-32.6997757	1.00	2500m+100M
FP_826	38.2900009	-32.6832695	1.00	2500m+100M
FP_827	38.2921486	-32.6707115	0.76	2500m+100M
FP_828	38.2929382	-32.6667595	0.24	2500m+100M
FP_829	38.2961121	-32.6502762	1.00	2500m+100M
FP_830	38.2990913	-32.6337662	1.00	2500m+100M
FP_831	38.2992859	-32.6326370	0.07	2500m+100M
FP_832	38.3018875	-32.6172333	0.93	2500m+100M
FP_833	38.3044891	-32.6006813	1.00	2500m+100M
FP_834	38.3068924	-32.5841064	1.00	2500m+100M
FP_835	38.3090973	-32.5675125	1.00	2500m+100M
FP_836	38.3111115	-32.5508995	1.00	2500m+100M
FP_837	38.3122635	-32.5405350	0.62	2500m+100M
FP_838	38.3129272	-32.5342712	0.38	2500m+100M
FP_839	38.3145523	-32.5176277	1.00	2500m+100M
FP_840	38.3159790	-32.5009727	1.00	2500m+100M
FP_841	38.3521118	-32.0014687	29.97	2500m+100M
FP_842	38.4040565	-31.5585251	26.65	2500m+100M
FP_843	38.1030426	-30.9589596	39.09	FOS+60M
FP_844	38.1540642	-30.2329845	43.54	FOS+60M
FP_845	38.1620903	-29.4855709	44.74	FOS+60M
FP_846	38.5180969	-28.9733219	35.90	Median Line