



Continental Shelf of Spain

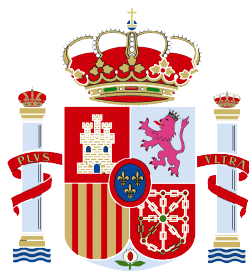
**Partial Submission on the limits of the
Spanish Continental Shelf pursuant to
Article 76 and Annex II of the United Nations
Convention on the Law of the Sea
in respect of the area of Galicia**



**Submission to the Commission on the Limits
of the Continental Shelf**

Amended Executive Summary
English

November 2024



Continental Shelf of Spain

Partial Submission on the limits of the Spanish Continental Shelf pursuant to Article 76 and Annex II of the United Nations Convention on the Law of the Sea in respect of the area of Galicia

Bathymetric map of the Galicia Bank			3D view on Fledermaus of the Galicia Bank
Spanish Oceanographic vessel "Hespérides"			
	" <i>Lophelia pertusa</i> " coral living in the Galicia Bank		Multichannel seismic reflection works during the Breogham cruise in the 2005

Submission to the Commision on the Limits of the Continental Shelf

Amended Executive Summary

November 2024



The Continental Shelf of Spain

**Partial Submission on the limits of the Spanish
Continental Shelf pursuant to Article 76 and Annex II of
the United Nations Convention on the Law of the Sea in
respect of the area of Galicia**

Part 1 Amended Executive Summary

**Submission to the Commission on the Limits
of the Continental Shelf**

November 2024



[UNESCO GeoPark of Cape Ortegal](#) (image above) and Cape Finisterre (image below), Galicia, the northernmost and the westernmost capes of Spain

TABLE OF CONTENTS

1. Introduction

2. Outer limits of the continental shelf in the West Galicia Margin beyond 200 nautical miles according to Article 76.

3. Application of the Statement of Understanding (SoU) to the Bay of Biscay

4. Absence of disputes

5. State bodies responsible for the preparation of the Amended Executive Summary

ANNEX

Table 1. West Galicia Margin: List of coordinates, latitude and longitude, of fixed points that define the outer limits of the continental shelf beyond 200 M (Datum WGS84)

Table 2. Bay of Biscay: List of coordinates of outer fixed points defining the limits of the continental shelf beyond 200 M according to the SoU (Datum: WGS84)

1. Introduction

1. This Submission by the Kingdom of Spain (hereinafter “Spain”) to the Commission on the Limits of the Continental Shelf (hereinafter “the Commission”) was lodged on 11 May 2009. It was made pursuant to Article 76 and Annex II of the 1982 United Nations Convention on the Law of the Sea (hereinafter “the Convention” or “UNCLOS”), with a view to defining the outer limits of the continental shelf beyond 200 nautical miles in the Galicia area.
2. In accordance with paragraph 3 of Annex I to the Rules of Procedure (CLCS/40/Rev.1), this Submission represents a partial submission in respect of a portion only of the extended continental shelf claimed by Spain
3. For the purpose of this Submission, the area is bounded to the west by the constraint lines according to Article 76, paragraph 5, to the north by the 200M of Ireland, United Kingdom of Great Britain and Northern Ireland and France and to the south, by the southern limit of the Area of Common Interest for Spain and Portugal, defined by common agreement between both coastal States (hereinafter “ACI”) (**Figure 1**).

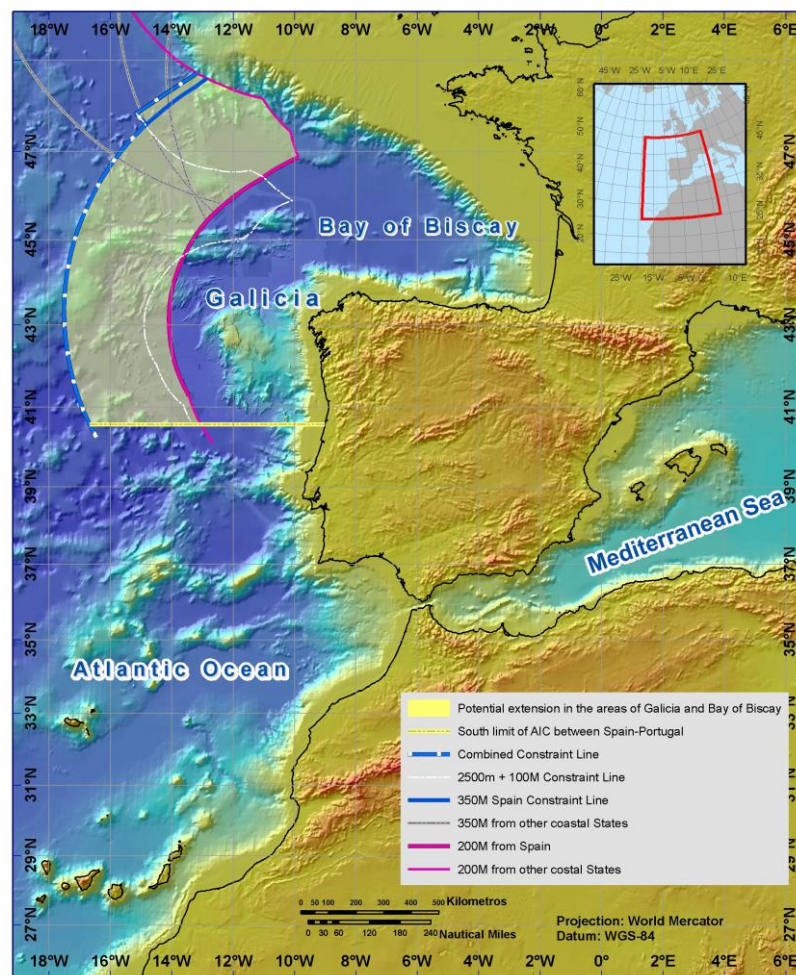


Figure 1: Map of the potential extension of the continental shelf beyond 200M of Spain west off Galicia area including the West Galicia Margin and Bay of Biscay Margin showing the west constraint lines according Article 76 paragraph 5 (blue dotted line), the south limit of the AIC

(yellow line) and the 200M of the coastal States (magenta lines).

4. Additionally, Spain made a partial joint Submission together with France, Ireland, the United Kingdom of Great Britain and Northern Ireland (FISU) regarding the area of the Bay of Biscay and the Celtic Sea, submitted to the Commission on 19 May 2006, and formally presented to the Plenary at the eighteenth session of the Commission (CLCS/52). The final Recommendations of this partial Submission by Spain were approved by the Commission on 24 March 2009 (CLCS/62).
5. On 17 December 2014, Spain made another partial submission in respect of the area west of the Canary Islands. It has not been considered yet by the Commission.
6. Ten years after this partial Submission in respect of the area of Galicia, the Commission established a Subcommission for its consideration during the fiftieth session. The Subcommission has carried out the examination of the Submission from the fifty-first to the sixty-second sessions.
7. In the course of the examination of the Submission by the Subcommission, the Delegation of Spain submitted additional information and clarifications in response to written preliminary considerations and questions of the Subcommission. In this regard, following discussions with the Subcommission, the approach was changed resulting in the split into two margins, namely, (i) the Bay of Biscay Margin and (ii) the West Galicia Margin (**Figure 2**).
8. During the sixty-second session, Spain submitted substantial additional information and clarifications following the application of different methodologies for the establishment of the outer edge of the continental margin, i.e., Article 76 4(a)(i) & (ii) for the West Galicia Margin, and the Statement of Understanding concerning a specific method to be used in establishing the outer edge of the continental margin (hereinafter “Statement of Understanding” or “SoU”) for the Bay of Biscay Margin.
9. In view of the significant departure from the original limits and formulae lines of the Submission and in line with the legal opinion of the Legal Counsel of 25 August 2005 (CLCS/46), the Subcommission requested an Amended Executive Summary.
10. Following the request expressed by the Subcommission in its letters 20241024ScLetEsp027 dated 24 October 2024 and 20241107ScLetEsp028 dated 7 November 2024, Spain submits to the Commission an Amended Executive Summary. This document reflects the significant and continuous efforts made by Spain in data acquisition and data assembly with the purpose of providing the Commission with adequate material for its consideration. This executive summary supersedes the one made on 11 May 2009.

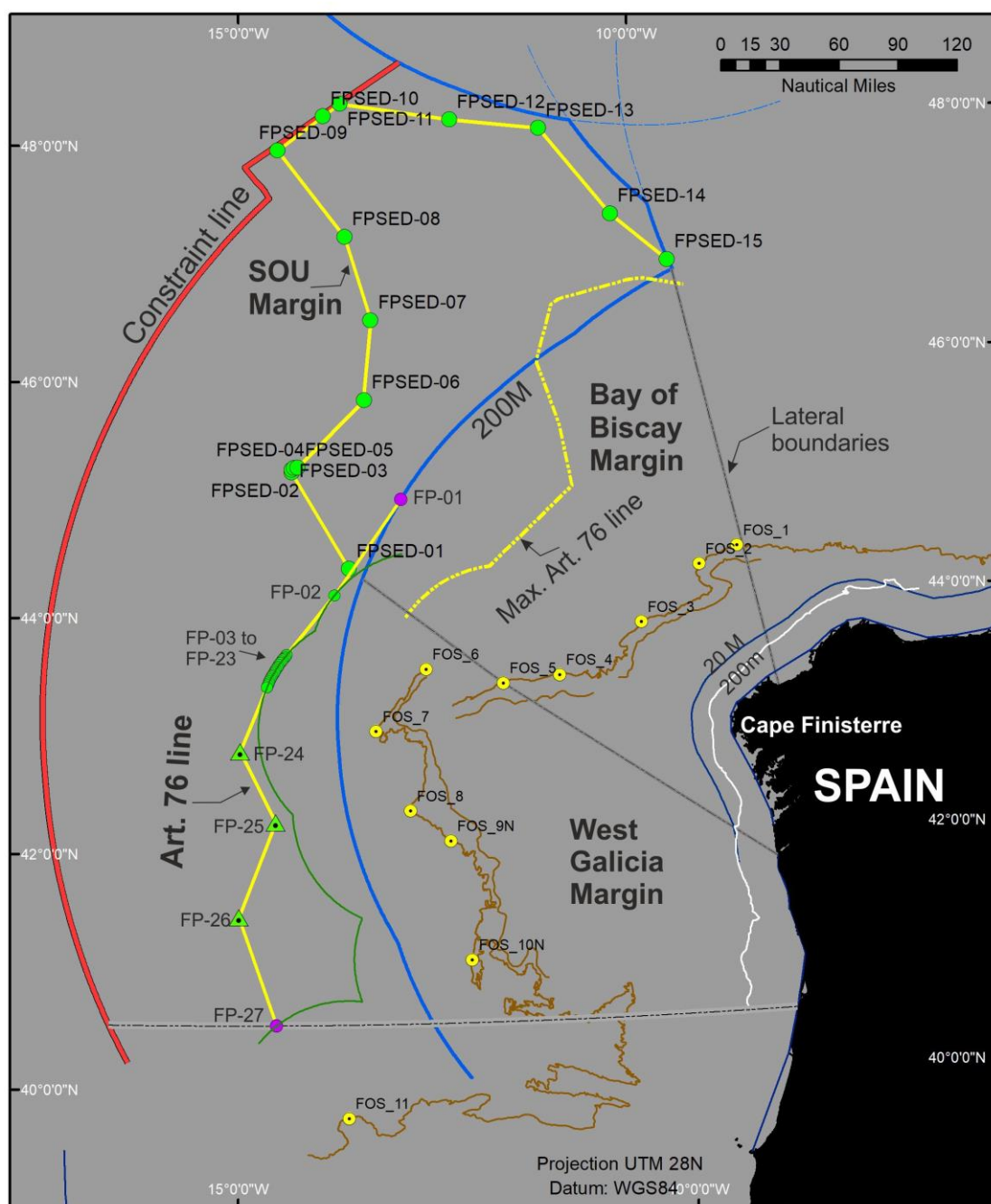


Figure 2: Delineation of the outer limits of the continental shelf beyond 200M in (i) the West Galicia Margin according to UNCLOS Article 76 and (ii) the Bay of Biscay by applying the SoU. Green circle and triangles are the outer fixed points. Magenta circles are fixed points. Yellow lines are the outer limits straight lines not exceeding 60M. Dotted yellow line are the permissible line applying Article 76 in the Bay of Biscay Margin. Coordinates, latitude and longitude, are listed below in ANNEX Tables.

2. Outer limits of the continental shelf in the West Galicia Margin beyond 200 nautical miles according Article 76

11. The amended outer limits of the Spanish extended continental shelf are defined by the fixed points indicated in the list of coordiantes contained in Annex 1 of this document.
12. The scientific and technical information presented in support of this amended Submission establishes that the outer edge of the continental margin of Spain in the Galicia area extends beyond 200 M measured from the territorial sea baselines.
13. The outer limits of the West Galicia Margin are based on the provisions of Article 76, paragraphs 4, 5 and 7, of the United Nations Convention on the Law of the Sea.

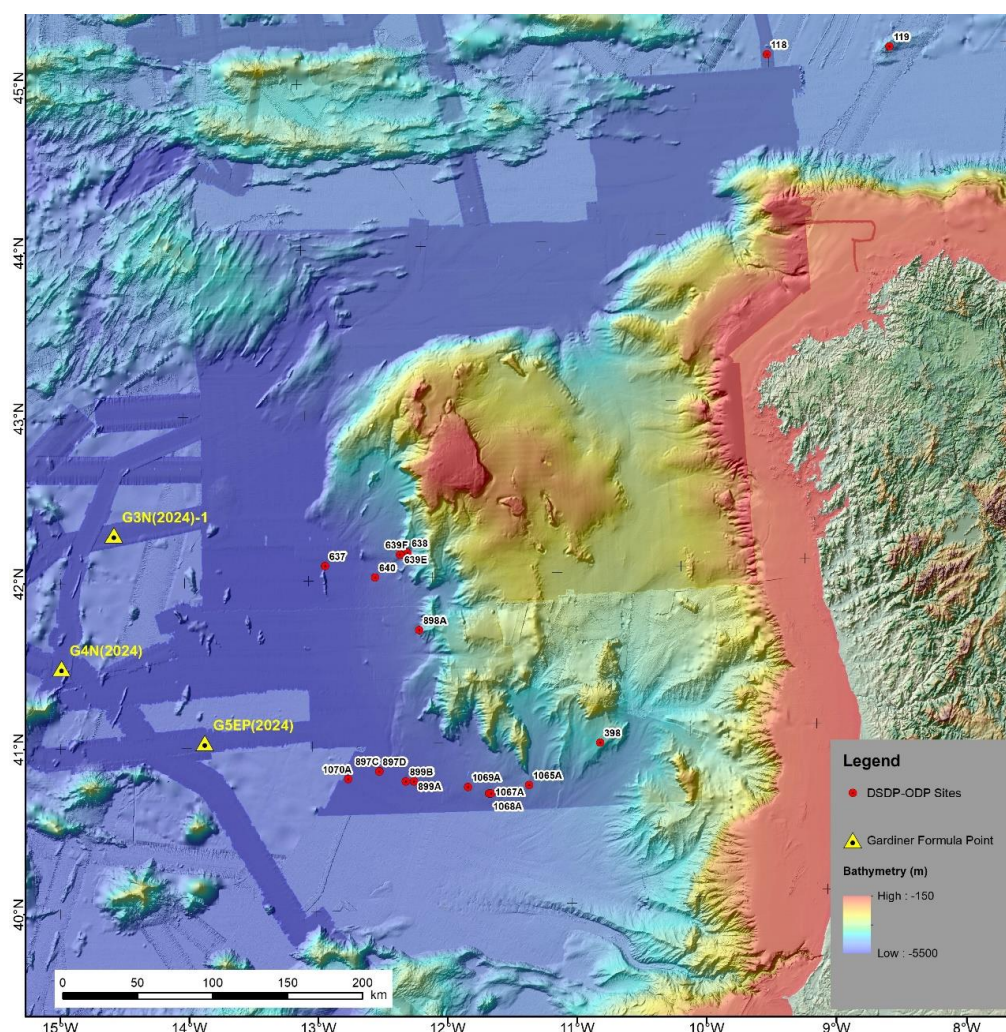


Figure 3. Location of the 1% sedimentary thickness points along the West Galicia Margin

14. Spain has delineated the outer limits of its continental shelf beyond the 200M in the West Galicia Margin by straight lines not exceeding 60 M that connect fixed points defined by coordinates of latitude and longitude according Article 76, paragraph 7. Spain presents in this Amended Executive Summary the coordinates using WGS84 datum of 32 fixed points along the

West Galicia Margin and the provisions of Article 76 used to calculate the fixed points (**ANNEX Table 1**).

15. The outer limit defined by the combination of fixed points along the West Galicia margin calculated from the application of Article 76, paragraph 4, does not extend beyond 350 nautical miles measured from the baselines from which the breadth of the territorial sea is measured, or 100 nautical miles from the 2,500 metre isobath, in accordance with Article 76, paragraph 5 of the Convention (**Figure 4**).

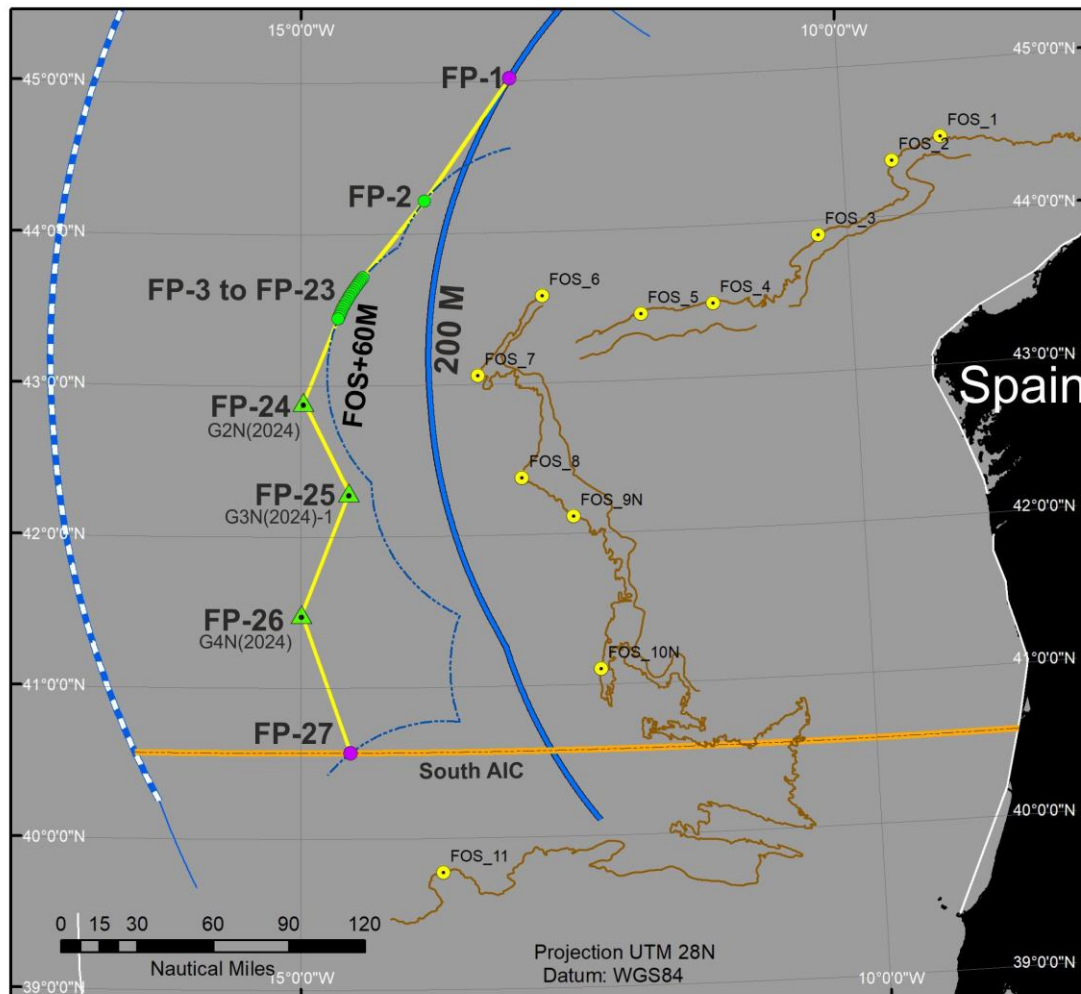


Figure 4: Delineation of the outer limits of the continental shelf in the West Galicia Margin beyond 200 M (yellow line) which is composed of 27 fixed points connected by straight lines not exceeding 60M according to Article 76, paragraph 7. Formulae fixed points according to paragraph 4(b) of Article 76 are marked as green circles and those fixed points (Gardiner points) according paragraph 4(a) of Article 76 as green triangles. Fixed points FP-1 at the 200 M of Spain and FP27 at the southern limit of the ACI (orange line) are marked as magenta circles. The constraint lines according to Article 76, paragraph 5 are marked as a blue-white line.

3. Application of the Statement of Understanding (SoU) to the Bay of Biscay

16. In establishing the outer edge of the continental shelf of the Bay of Biscay, Spain has applied the method specified in the SoU as provided in the Annex II of the Final Act of the Third United Nations Conference on the Law of the Sea.
17. The application of the SoU is that of a general nature provided that the submitting State's continental margin exhibits special characteristics and that the application of Article 76 occasions an inequity (**Figure 2**).
18. In this regard, Spain is firmly of the view that the application of this specific method is consistent with the terms of the SoU, considering the particular and special characteristics of the continental margin of the Bay of Biscay (**Figure 5**) and recognizing the inequity that would arise in the event that Spain were required to apply the provisions of paragraph 4 of Article 76 under these circumstances.

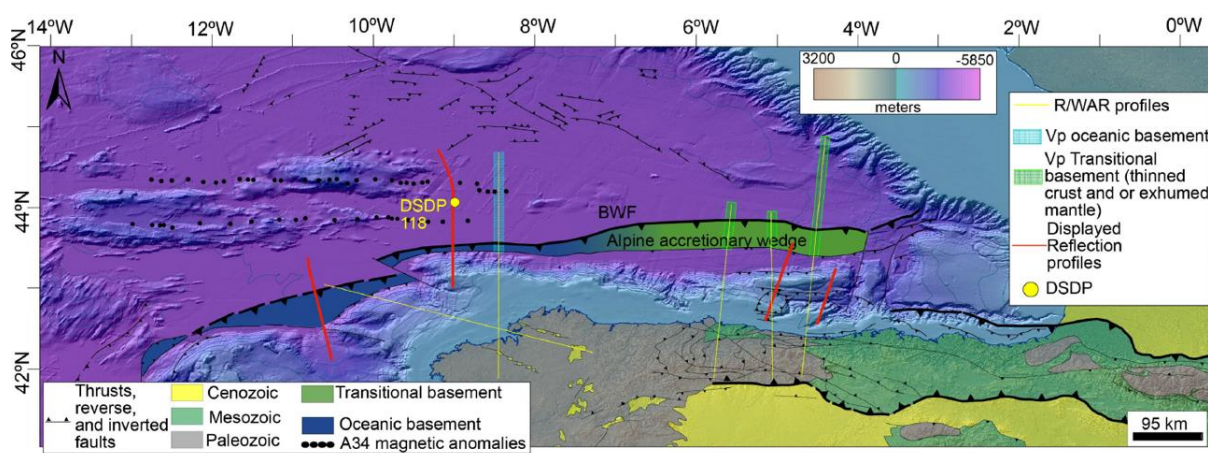


Figure 5: Margin of the Bay of Biscay-North Iberian Margin characterized by a unique subduction initiation site in the Atlantic margin (map from Somoza et al. 2019; Cádiz et al., 2024).

19. According to the SoU, notwithstanding the provisions of Article 76, the outer edge of the continental margin may be established by straight lines not exceeding 60 M connecting fixed points, at each of which the thickness of sedimentary rock is not less than 1 km.
20. The application of the SoU is that of a general nature provided that the submitting State's continental margin exhibits special characteristics and that the application of Article 76 occasions an inequity (Figure 2).
21. In order to demonstrate that the requirements for the application of the Statement of Understanding are met, Spain has furnished scientific and technical material to the Subcommission in the doc 20241001EspLetSc014annex submitted prior to the sixty-second session.
22. A list of coordinates of the outer fixed points (FPSED) with sedimentary rock thickness greater than 1 km that generates the SoU Margin in the Bay of Biscay is shown in **ANNEX Table 2**.

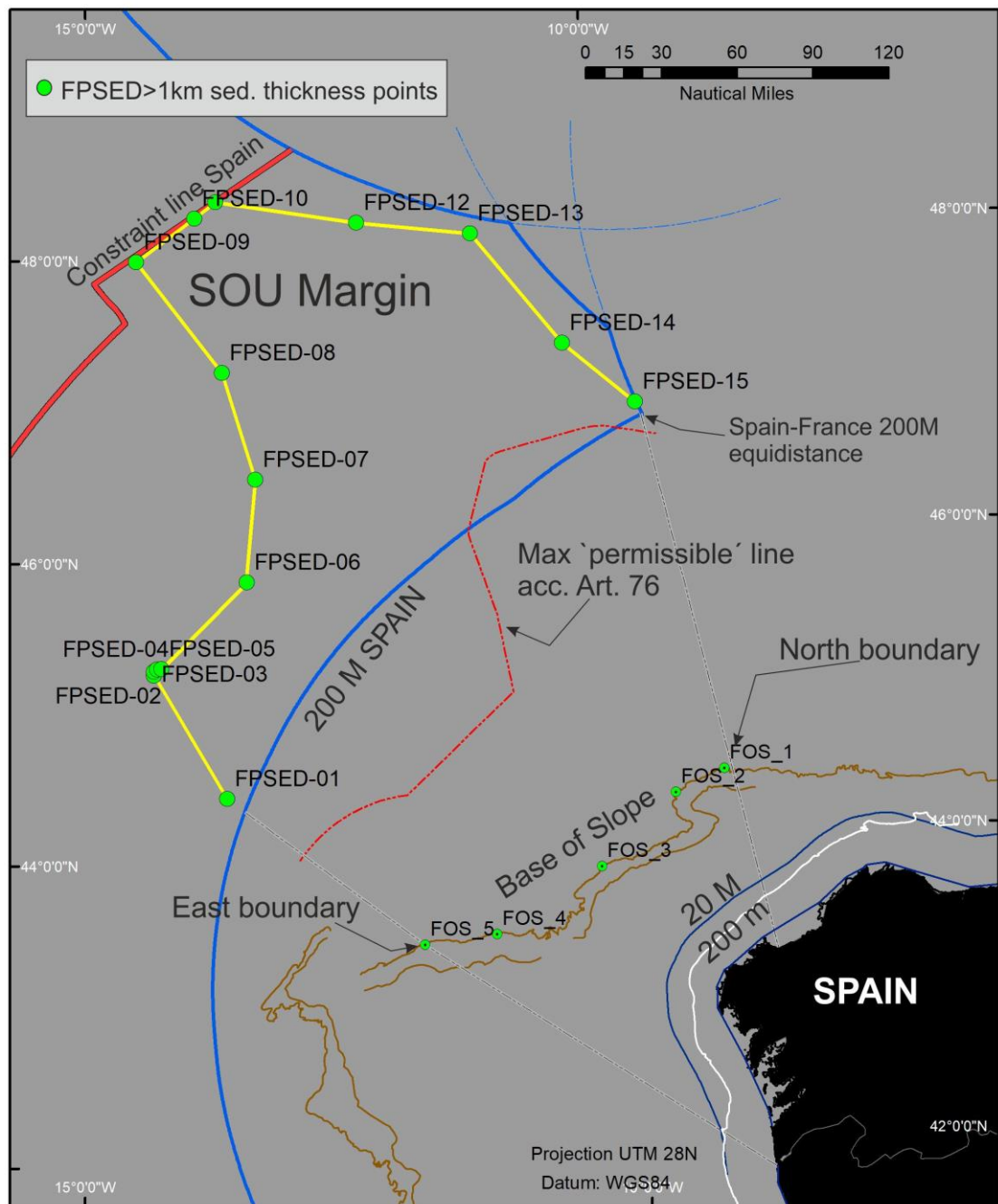


Figure 6: Sedimentary fixed points (FPSSED-01 to FPSSED-15) at each of which the thickness of sedimentary rock is not less than 1km (green dots) connected by straight lines not exceeding 60 M in length (yellow line), generating the SoU margin in the Bay of Biscay. List of coordinates in ANNEX Table 1. FOS 1 and FOS 5 conform the northern and western lateral boundaries of the SoU area along the Bay of Biscay Margin. Constraint lines for Spain are also shown (red line). Baselines (thin blue line), 200m isobath (white line), 20 M line (blue), base of slope (brown line) and maximum permissible line according to Article 76 are also shown.

4. Absence of disputes

23. Pursuant to Annex I, paragraph 2(a), of the Commission's Rules of Procedure, Spain wishes to inform the Commission that the area of the continental shelf to which this partial Submission refers to is not the subject of any dispute with any other coastal State or States, nor does it prejudice matters relating to the delimitation of boundaries between States.
24. Firstly, Spain wishes to inform the Commission that this partial Submission neither prejudices nor prejudices the delimitation of the outer limits of the continental shelf resulting from the joint partial Submission by Spain, France, Ireland and the United Kingdom of Great Britain and Northern Ireland in the area of the Celtic Sea and the Bay of Biscay (FISU) (**Figure 6**)
25. Secondly, Spain wishes to inform the Commission that, for the exclusive purpose of defining the outer limits of the continental shelf beyond 200 nautical miles in the area of the Galicia Bank, Spain and Portugal agreed to identify an Area of Common Interest (ACI) for both coastal States, defined to the north by parallel 41° 52' N, to the south by parallel 40° 34' 13'' N, to the east by the baseline from which the breadth of the territorial sea of Spain and Portugal is measured, and to the west by a line 350 nautical miles from the aforesaid baseline (**Figure 4**)
26. Within this ACI, the outer limits of the extended continental shelf have been established by the two coastal States in a spirit of common understanding. Although each of the two States made a separate Submission to the Commission, Spain and Portugal acted in coordination sharing information, scientific and technical data, and using common criteria.
27. Spain has authorized Portugal to make use of the information and scientific and technical data corresponding to the ACI that are included in this partial Submission and which are also relevant to the Portuguese Submission. Accordingly, and always in relation to the ACI, Spain authorizes the Commission to make use of any information and scientific and technical data contained in the Spanish Submission that may also be relevant to the Portuguese Submission. Both States maintain a regular and continuous dialogue and exchange of information with regard to the ACI.
28. In relation to the delimitation of the extended continental shelf in the ACI, Spain wishes to inform the Commission that Spain and Portugal have agreed that the aforesaid delineation does not prejudice the lateral delimitation of the continental shelf between both coastal States, which shall be resolved in the future and by common agreement between both Parties, in accordance with the applicable rules and principles of international law

5. State bodies responsible for the preparation of the Amended Executive Summary

29. This amended partial Submission was prepared by the following State bodies:

Ministry of Foreign Affairs, European Union and Cooperation of Spain

- Commission on Limits with France and Portugal
- International Legal Office

Ministry of Science and Innovation

- Instituto Geológico y Minero de España, IGME-CSIC (Geological Survey of Spain)
- Instituto Español de Oceanografía, IEO-CSIC (Spanish Oceanographic Institute)
- Committee for the Coordination and Monitoring of Activities of Oceanographic Vessels (COCSABO)

Ministry of Defence

- Hydrographic Institute of the Navy

30. The general coordination of activities was carried out by the Ministry of Foreign Affairs, European Union and Cooperation of Spain. The scientific and technical work (maps, figures, documents attached, annexes and digital data) was carried out by the Scientific and Technical Group for the Extension of the Spanish Continental Shelf, constituted by scientists from the aforesaid Institutes.

Authors

Ambassador Juan Francisco Montalbán Carrasco (Head of the Delegation); Prof. Luis Somoza Losada (Head of Technical-Scientific Delegation); Dra. Teresa Medialdea Cela (seismic); C/C Luis Rioja Gallo (statistical models and hydrography); Dra. Desireé Palomino Cantero (GIS maps), Dr. Juan Tomás Vázquez Garrido (geology); T/N Carlos Figuerido Figueirido (hydrography); Dra. Ángeles Jiménez García-Carriazo (legal aspects); Mr. José Manuel Pascual García (legal aspects).

References

Cadenas P., Welford, J.K., Fernández-Viejo, G., Duarte J.C & Somoza, L. (2024). A unique fossilized onset of convergent tectonics along the Iberian magma-poor Atlantic margins. *8th Conjugated Margins Conference*. Lisbon. 27-29 May, 2024. Abstract Book, p. 14.
<https://www.marginsconference2024.com/>

Somoza, L., Medialdea, T., González, F. J., León, R., Palomino, D., Rengel, J., ... & Vázquez, J. T. (2019). Morphostructure of the Galicia continental margin and adjacent deep ocean floor: from hyperextended rifted to convergent margin styles. *Marine Geology*, 407, 299-315.
<https://www.sciencedirect.com/science/article/abs/pii/S0025322718303025>

ANNEX

Table 1. West Galicia Margin- List of coordinates, latitude and longitude, of fixed points that define the outer limits of the continental shelf beyond 200 M (Datum WGS84

Point ID	Latitude (DD.DDDDDD)	Longitude (DD.DDDDDD)	Method, Provision Article 76	Distance (M)
FP-1	45.020476	-13.055538	Fixed point at 200M Spain	59.46
FP-2	44.217048	-13.867694	Fixed Point at 60 nautical miles from the foot of slope FOS 6, 76 (4) (a) (ii)	38.83
FP-3	43.715507	-14.434099	Fixed Point at 60 nautical miles from the foot of slope FOS 7, 76 (4) (a) (ii)	1.32
FP-4	43.698442	-14.45308	Fixed Point at 60 nautical miles from the foot of slope FOS 7, 76 (4) (a) (ii)	1
FP-5	43.685452	-14.467475	Fixed Point at 60 nautical miles from the foot of slope FOS 7, 76 (4) (a) (ii)	1
FP-6	43.67246	-14.481864	Fixed Point at 60 nautical miles from the foot of slope FOS 7, 76 (4) (a) (ii)	1.1
FP-7	43.660538	-14.495044	Fixed Point at 60 nautical miles from the foot of slope FOS 7, 76 (4) (a) (ii)	1
FP-8	43.647094	-14.508617	Fixed Point at 60 nautical miles from the foot of slope FOS 7, 76 (4) (a) (ii)	1
FP-9	43.633486	-14.521873	Fixed Point at 60 nautical miles from the foot of slope FOS 7, 76 (4) (a) (ii)	1
FP-10	43.619718	-14.534809	Fixed Point at 60 nautical miles from the foot of slope FOS 7, 76 (4) (a) (ii)	1
FP-11	43.605795	-14.547422	Fixed Point at 60 nautical miles from the foot of slope FOS 7, 76 (4) (a) (ii)	1
FP-12	43.591719	-14.559708	Fixed Point at 60 nautical miles from the foot of slope FOS 7, 76 (4) (a) (ii)	1

FP-13	43.577494	-14.571664	Fixed Point at 60 nautical miles from the foot of slope FOS 7, 76 (4) (a) (ii)	1
FP-14	43.563126	-14.583286	Fixed Point at 60 nautical miles from the foot of slope FOS 7, 76 (4) (a) (ii)	1
FP-15	43.548618	-14.594572	Fixed Point at 60 nautical miles from the foot of slope FOS 7, 76 (4) (a) (ii)	1
FP-16	43.533974	-14.605519	Fixed Point at 60 nautical miles from the foot of slope FOS 7, 76 (4) (a) (ii)	1
FP-17	43.519198	-14.616123	Fixed Point at 60 nautical miles from the foot of slope FOS 7, 76 (4) (a) (ii)	1
FP-18	43.504295	-14.626383	Fixed Point at 60 nautical miles from the foot of slope FOS 7, 76 (4) (a) (ii)	1
FP-19	43.489268	-14.636295	Fixed Point at 60 nautical miles from the foot of slope FOS 7, 76 (4) (a) (ii)	1
FP-20	43.474123	-14.645857	Fixed Point at 60 nautical miles from the foot of slope FOS 7, 76 (4) (a) (ii)	1
FP-21	43.458862	-14.655066	Fixed Point at 60 nautical miles from the foot of slope FOS 7, 76 (4) (a) (ii)	1
FP-22	43.443492	-14.66392	Fixed Point at 60 nautical miles from the foot of slope FOS 7, 76 (4) (a) (ii)	1
FP-23	43.442741	-14.664332	Fixed Point at 60 nautical miles from the foot of slope FOS 7, 76 (4) (a) (ii)	35.61
FP-24	42.89506	-14.97695	Fixed Point where the thickness of sedimentary rocks is at least 1 per cent of the distance to the foot of slope FOS 7, 76 (4) (a) (i) 1% sed. thick point G2(2024)	40.34
FP-25	42.293485	-14.56791	4(a) (i): Fixed Point where the thickness of sedimentary rocks is at least 1 per cent of the distance to the foot of slope FOS 8, 76 (4)(a) (i) 1% sed. thick point G3N(2024)-1	51.86
FP-26	41.488913	-14.99196	4(a) (i): Fixed Point where the thickness of sedimentary rocks is at least 1 per cent of the distance to the foot of slope FOS 08, 76 (4)(a) (i) 1% sed. thick point G4N(2024)	58.33
FP-27	40.570278	-14.569287	Fixed Point at the intersection between the FOS 11+60M (76 (4) (a) (ii)) and southern limit of the ACI	

Table 2. Bay of Biscay: List of coordinates of outer fixed points defining the limits of the continental shelf beyond 200 M according to the SoU (Datum: WGS84)

Point ID	Latitude (DD.DDDDDD)	Longitude (DD.DDDDDD)	Distance to next point (M)	Sediment thickness (m)
FPSED-01	44.439018	-13.688922	56.95	1099
FPSED-02	45.260242	-14.358228	1.52	1015
FPSED-03	45.285616	-14.356397	1.44	1120
FPSED-04	45.300910	-14.329899	1.73	1214
FPSED-05	45.301716	-14.288833	48.35	1301
FPSED-06	45.868470	-13.472999	40.78	1218
FPSED-07	46.544400	-13.373400	44.44	1006
FPSED-08	47.255250	-13.675390	55.55	1031
FPSED-09	47.993510	-14.500880	28.85	1039
FPSED-10	48.278174	-13.922457	10.62	1047
FPSED-11	48.383440	-13.708980	56.38	1043
FPSED-12	48.225010	-12.321250	45.40	1033
FPSED-13	48.122330	-11.201620	56.68	1045
FPSED-14	47.367700	-10.360400	37.06	1817
FPSED-15	46.951600	-09.691600		1006