

The Solution Economy: A Vision for Sustainable Development

ECOSOC and Second Committee Joint Meeting

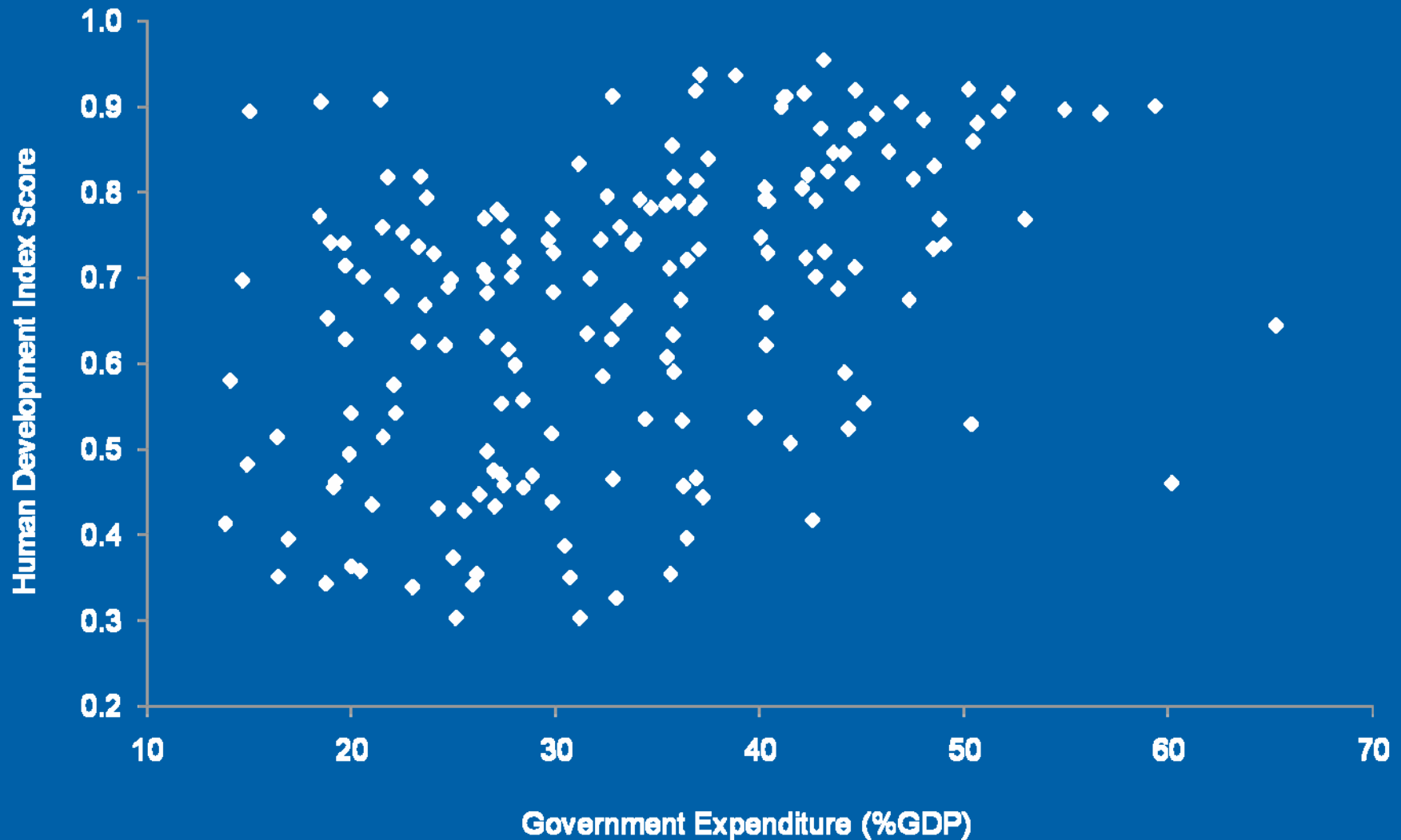
Paul Macmillan, Global Public Sector Leader
pmacmillan@deloitte.ca

November 6, 2013

Global Public Sector



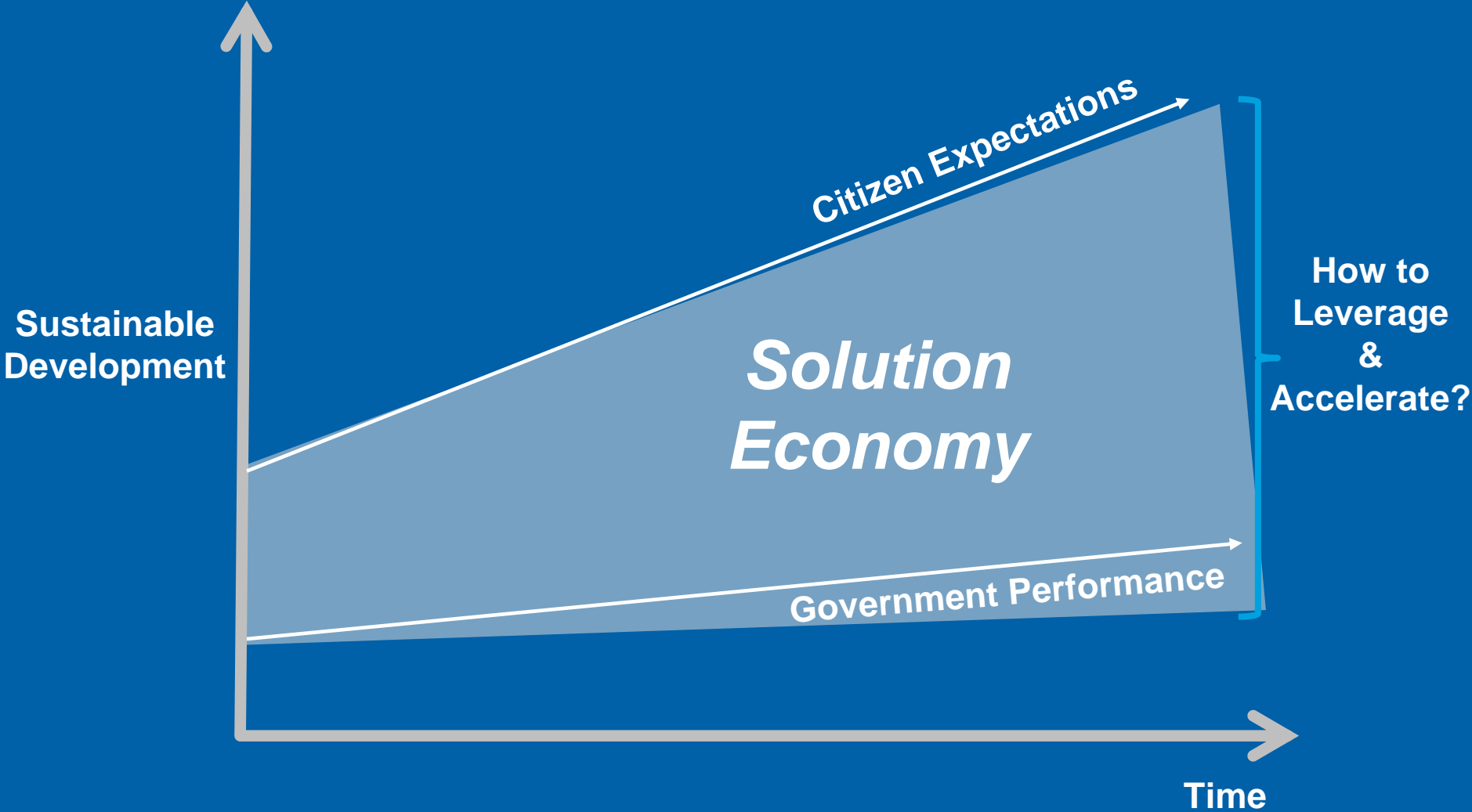
HDI and Government Spending



HDI source: United Nations; UNDP Statistics

Government expenditure source: 2013 IMF World Economic Outlook, October 2013

Serving unmet needs

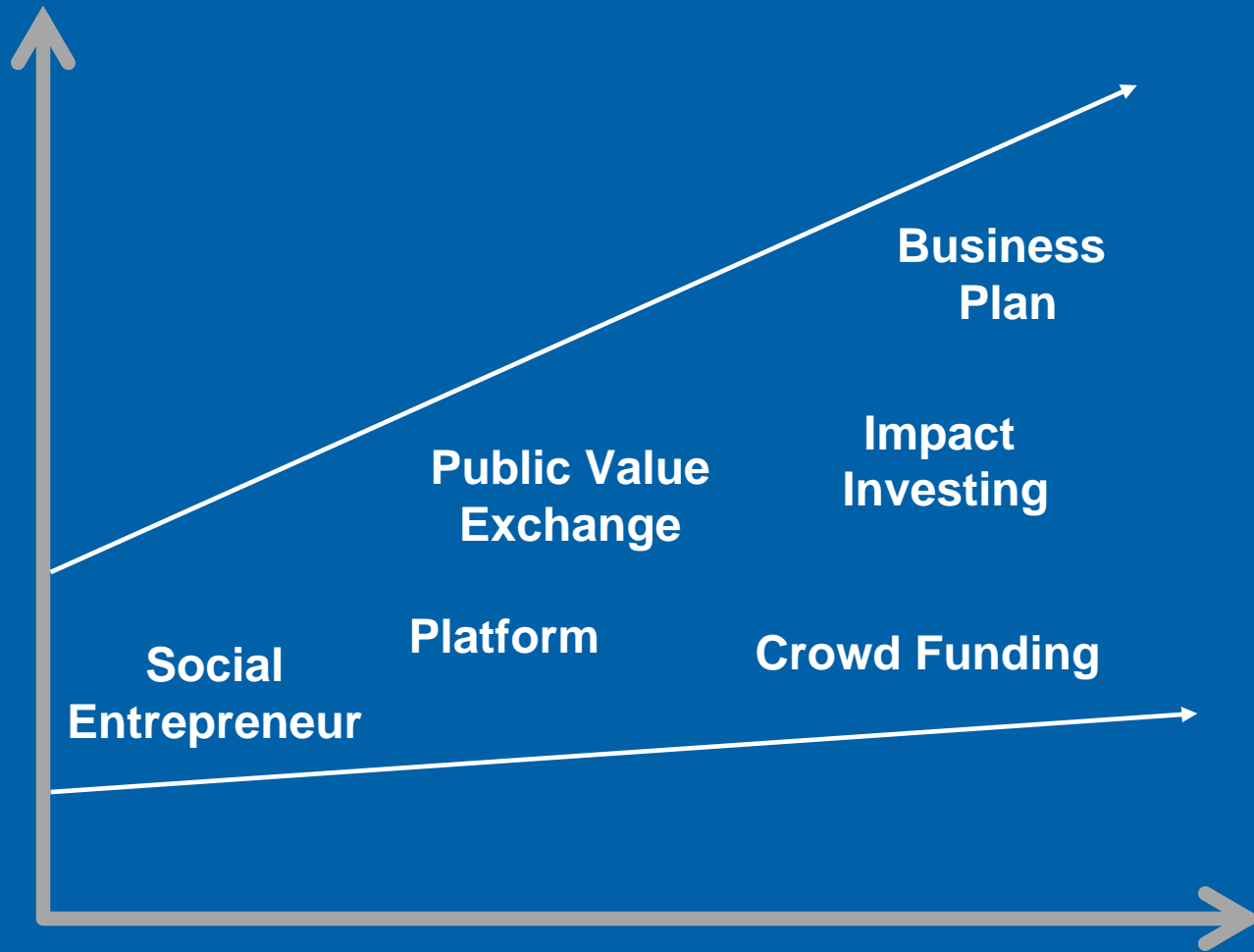


A woman with dark hair tied back is smiling as she works on a traditional wooden loom. She is wearing a dark-colored shirt. The background is slightly blurred, showing greenery and other people in the distance. A large, semi-transparent pink circle is overlaid on the right side of the image, containing the text.

Kiva
citizens
investing in
citizens

Image courtesy of Kiva

Kiva



Impact

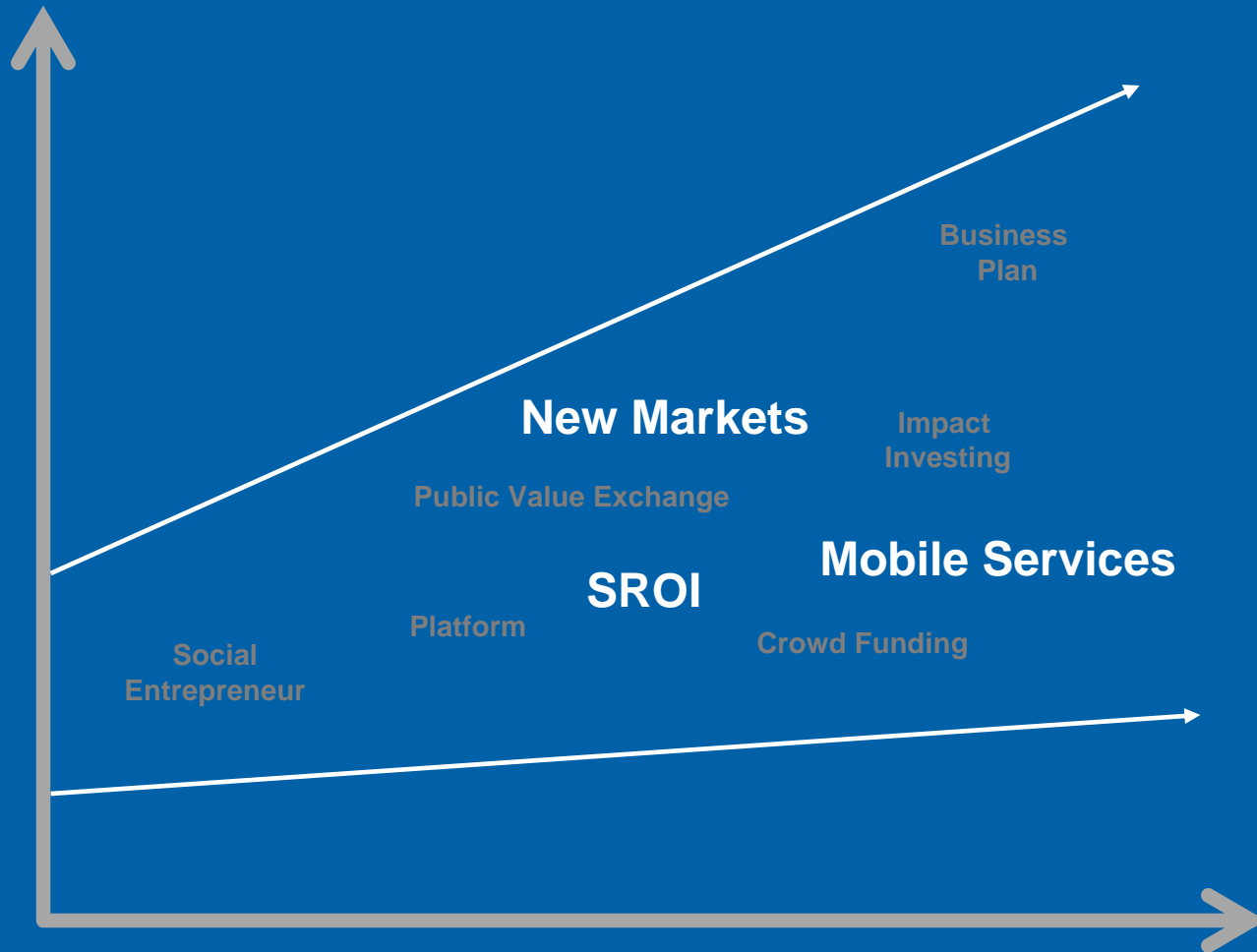
- ✓ **\$490M** of loans raised and distributed
- ✓ **1M+ lenders**
- ✓ **635 entrepreneurs** assisted in 72 countries
- ✓ **99%** loan repayment record

A woman wearing a blue baseball cap and a white t-shirt is looking down at her smartphone. She is standing in what appears to be a cafe or food service area, with a counter and various items visible in the background. A large yellow circle is overlaid on the right side of the image, containing the text.

Safaricom
technology
enables market
access

Image courtesy of Financial Deepening Challenge Fund

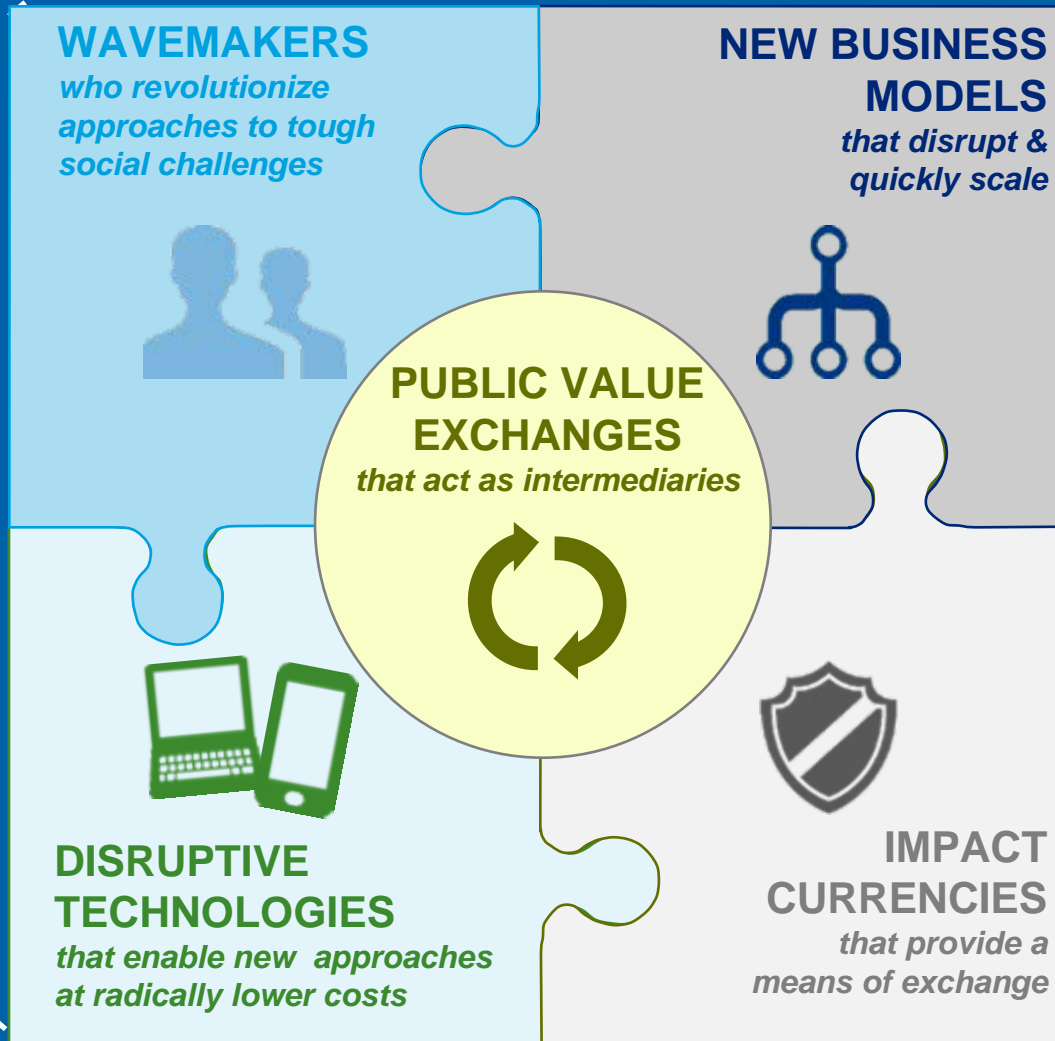
Safaricom's M-PESA



Impact

- ✓ **15M+** have gained access to financial services
- ✓ **20%** of Kenyan GDP transacted using M-PESA
- ✓ **70 percent** of adults in Kenya are M-PESA users
- ✓ **Public health** notifications

The Solution Economy



THE SOLUTION ECOSYSTEM
that offer fertile ground for impact markets and innovation



Deloitte refers to one or more of Deloitte Touche Tohmatsu Limited, a UK private company limited by guarantee, and its network of member firms, each of which is a legally separate and independent entity. Please see www.deloitte.com/about for a detailed description of the legal structure of Deloitte Touche Tohmatsu Limited and its member firms.

Deloitte provides audit, tax, consulting, and financial advisory services to public and private clients spanning multiple industries. With a globally connected network of member firms in more than 150 countries, Deloitte brings world-class capabilities and high-quality service to clients, delivering the insights they need to address their most complex business challenges. Deloitte has in the region of 200,000 professionals, all committed to becoming the standard of excellence.

© 2013. For information, contact Deloitte Touche Tohmatsu Limited.