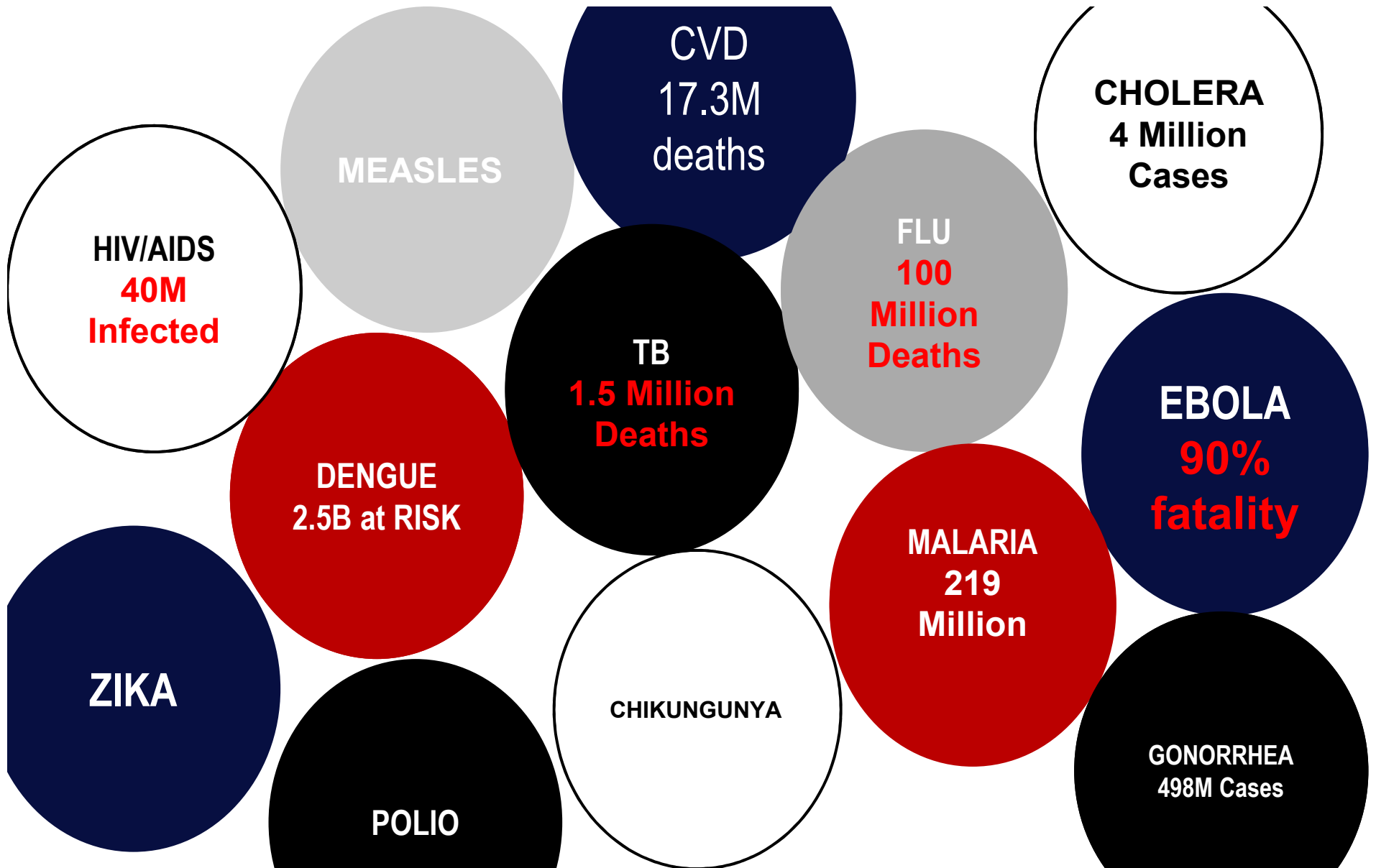
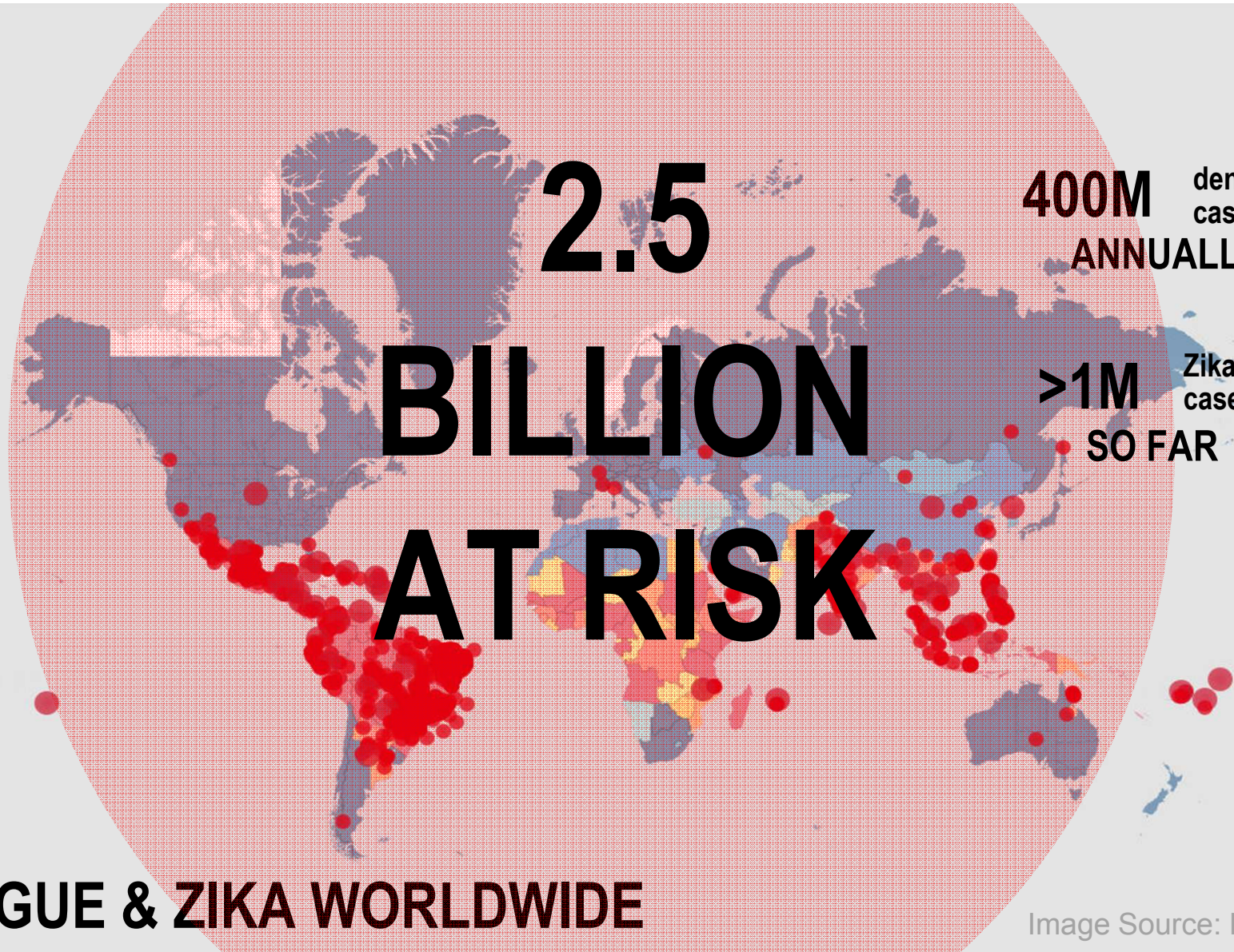


**PREDICTING DISEASES.**  
**SAVING LIVES.**



ARTIFICIAL INTELLIGENCE IN MEDICAL EPIDEMIOLOGY





**2.5**

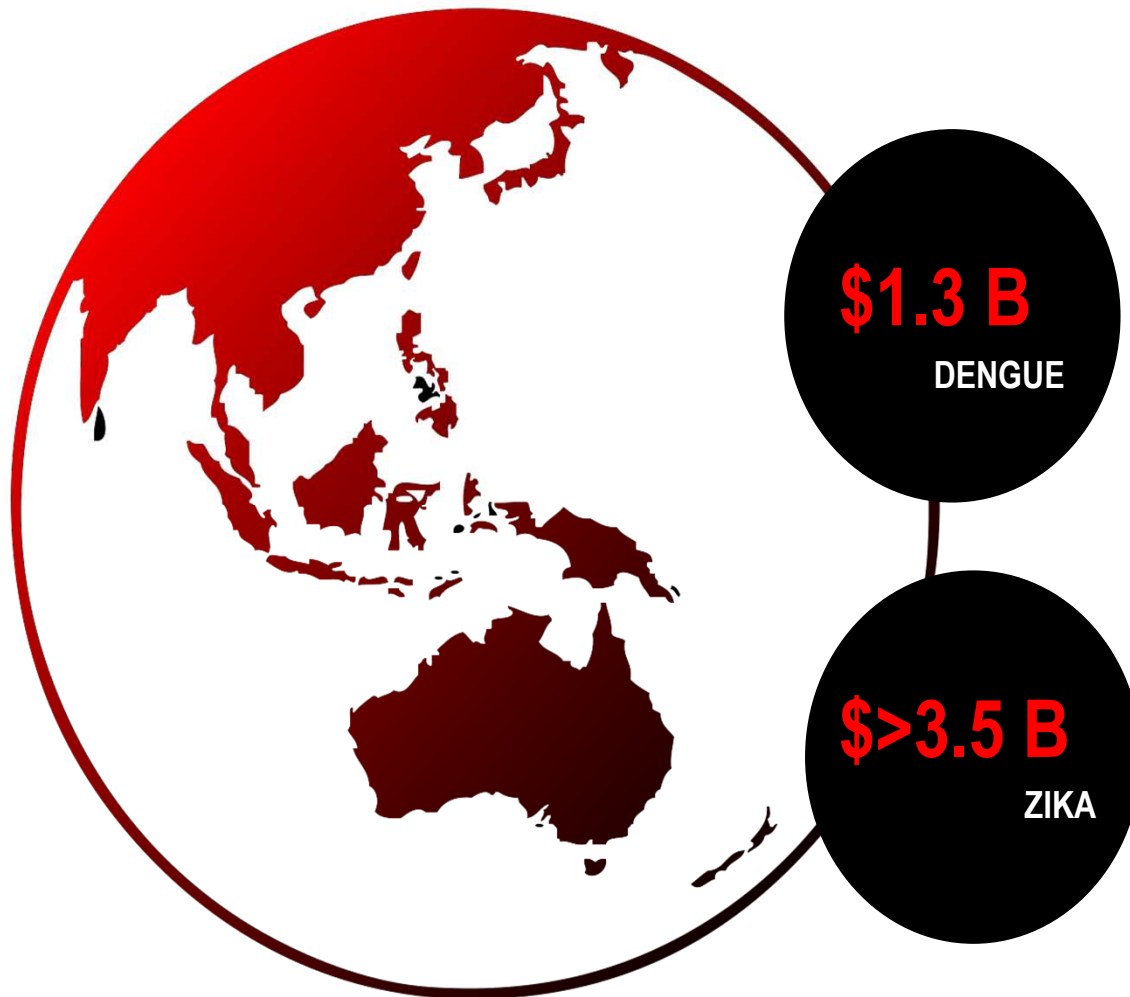
**BILLION  
AT RISK**

**400M** dengue cases  
**ANNUALLY**

**>1M** Zika cases  
**SO FAR**

**DENGUE & ZIKA WORLDWIDE**

Image Source: HealthMap



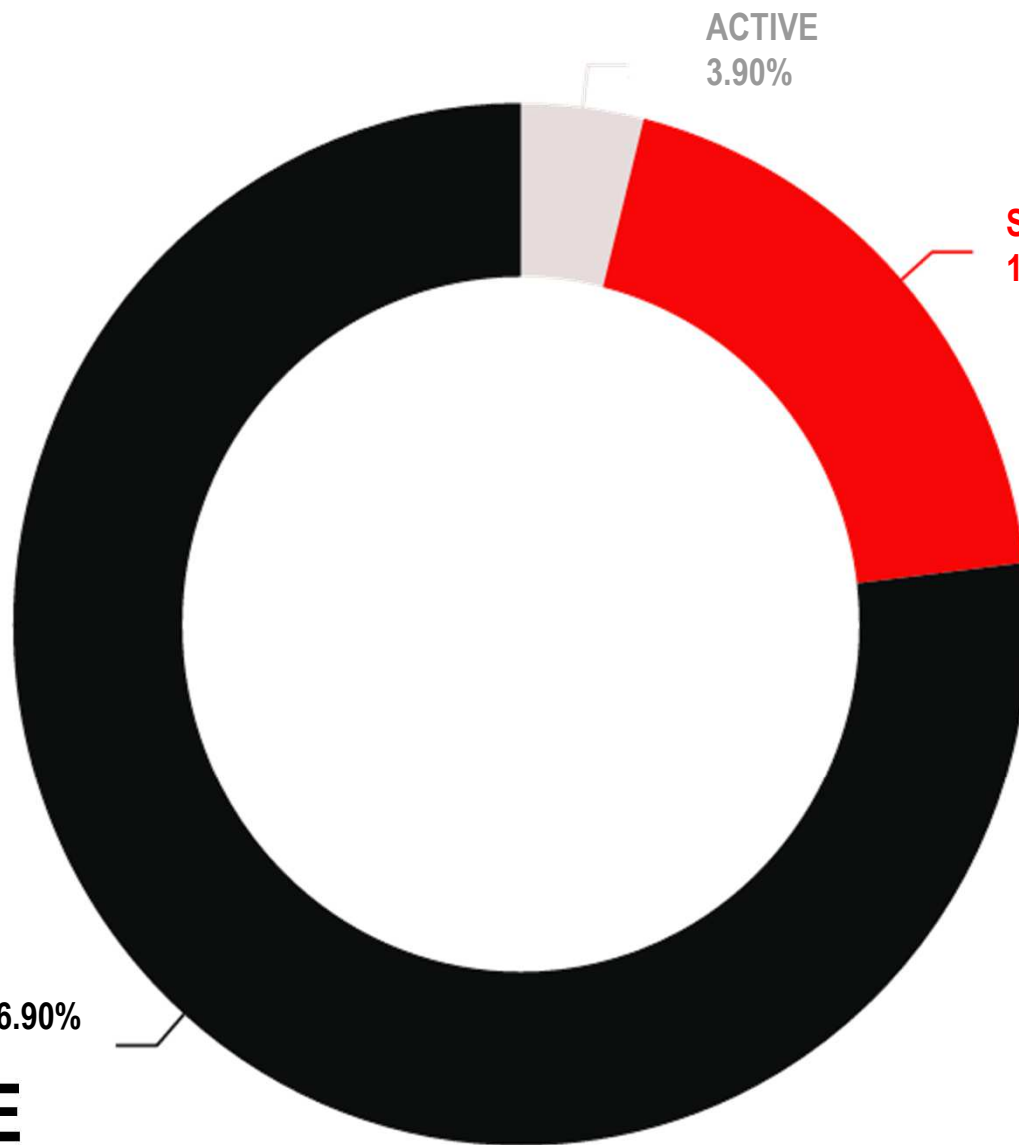
## DENGUE & ZIKA ECONOMIC IMPACT

# CURRENT RESPONSE

PASSIVE 76.90%

ACTIVE  
3.90%

SENTINEL  
19.20%







**UNKNOWN  
OUTBREAK  
AREAS**

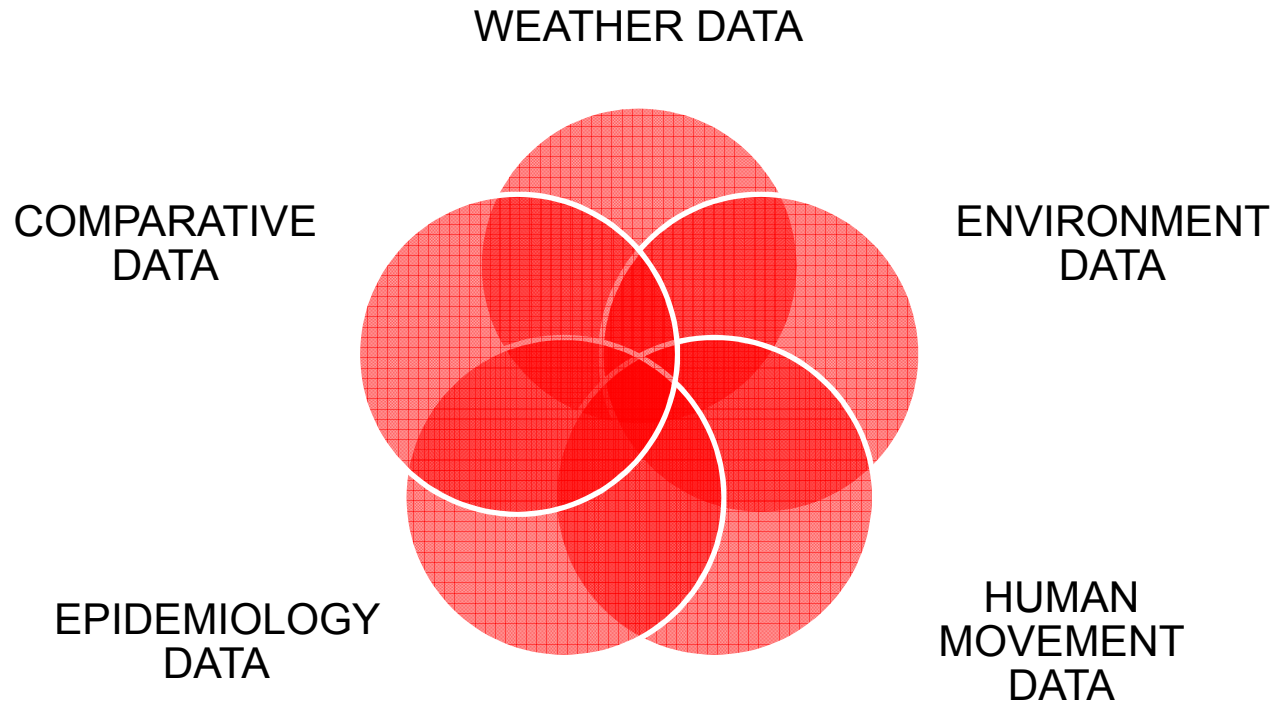
**UNPLANNED  
MANAGEMENT**

**GENETICALLY  
MODIFIED  
MOSQUITOES**

**FOGGING &  
LARVICIDING**

**HEALTH  
CAMPAIGNS**

**OUTBREAK MANAGEMENT**



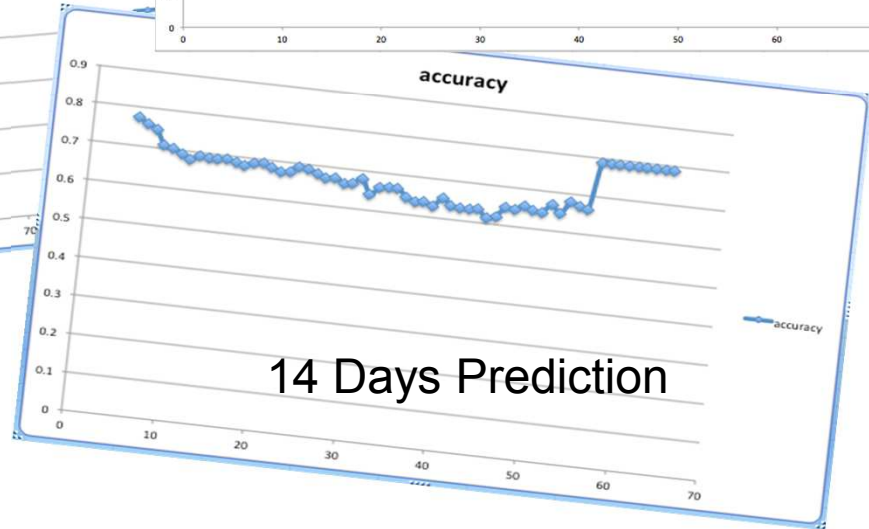
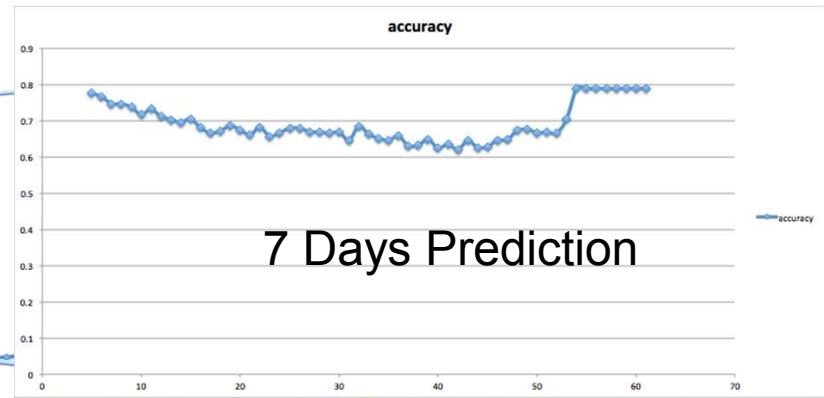
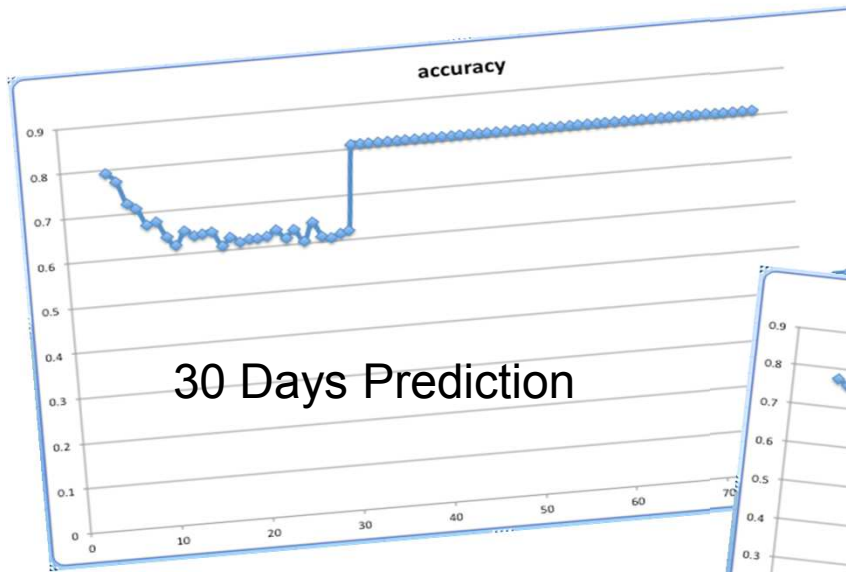
**Tech Approach: Dengue-ZIKA EPIDEMIOLOGY + AI**

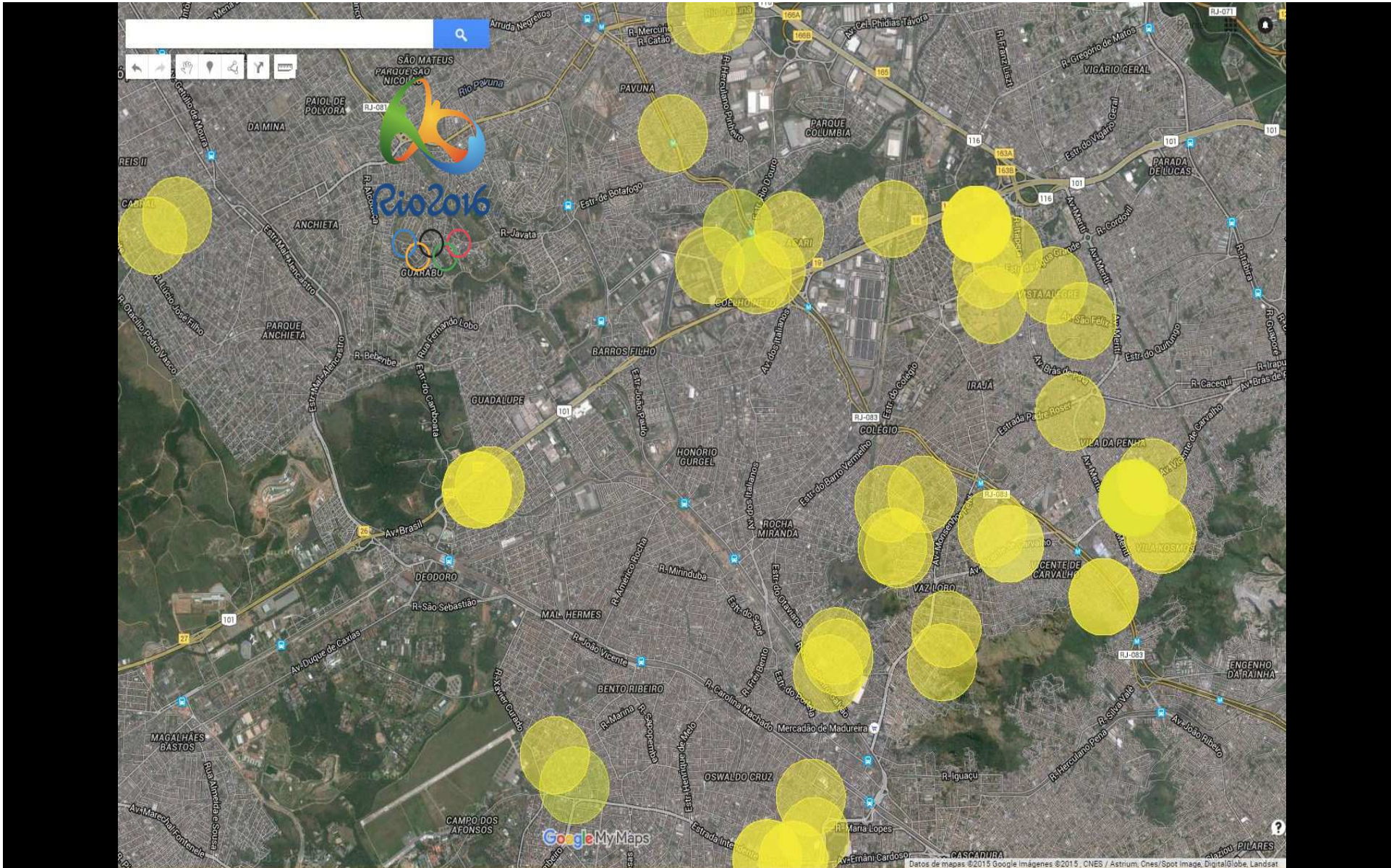
L  
E  
C  
T  
U  
R  
E  
S  
L  
E  
C  
T  
I  
O  
N  
S



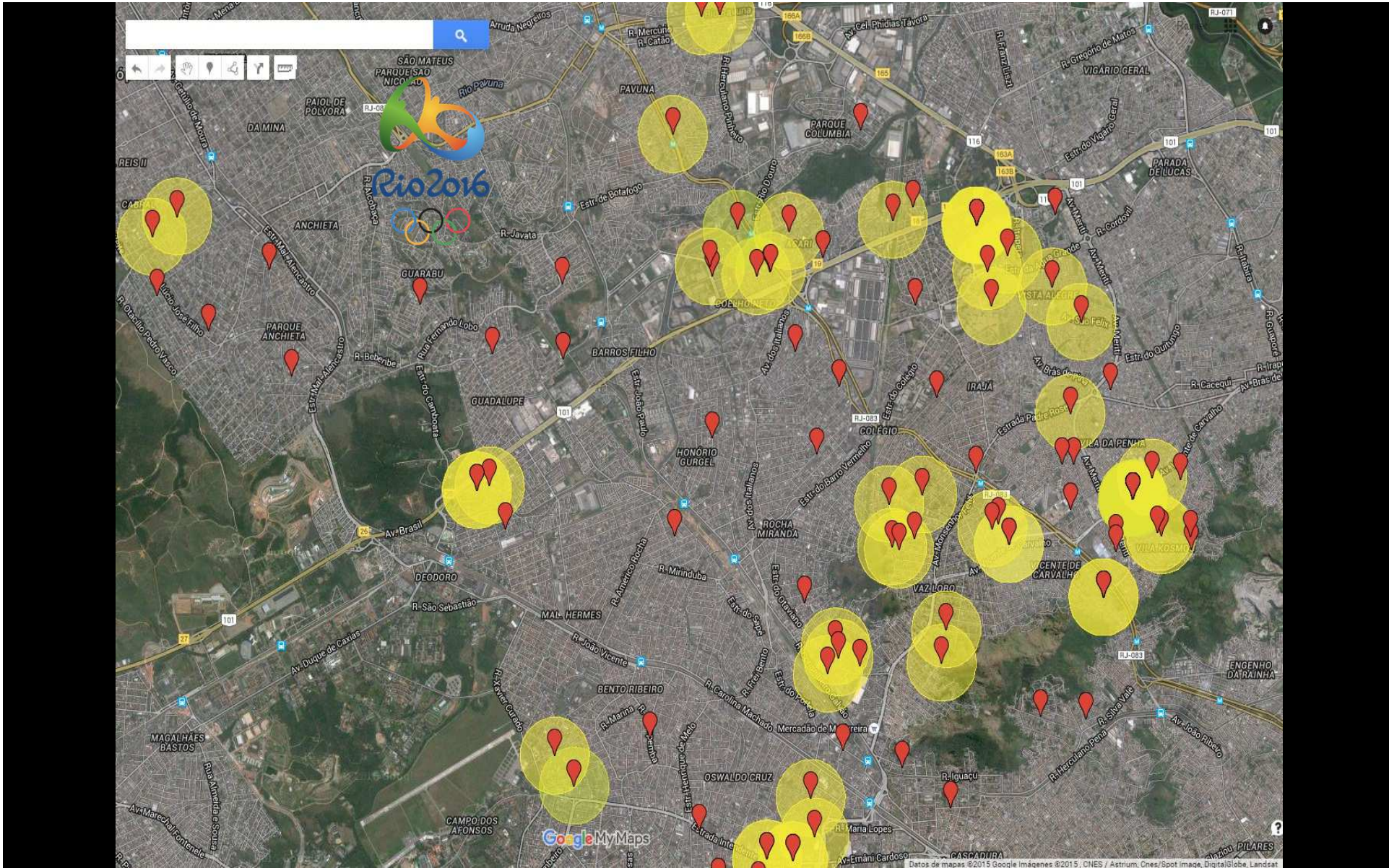


# Feature Selection



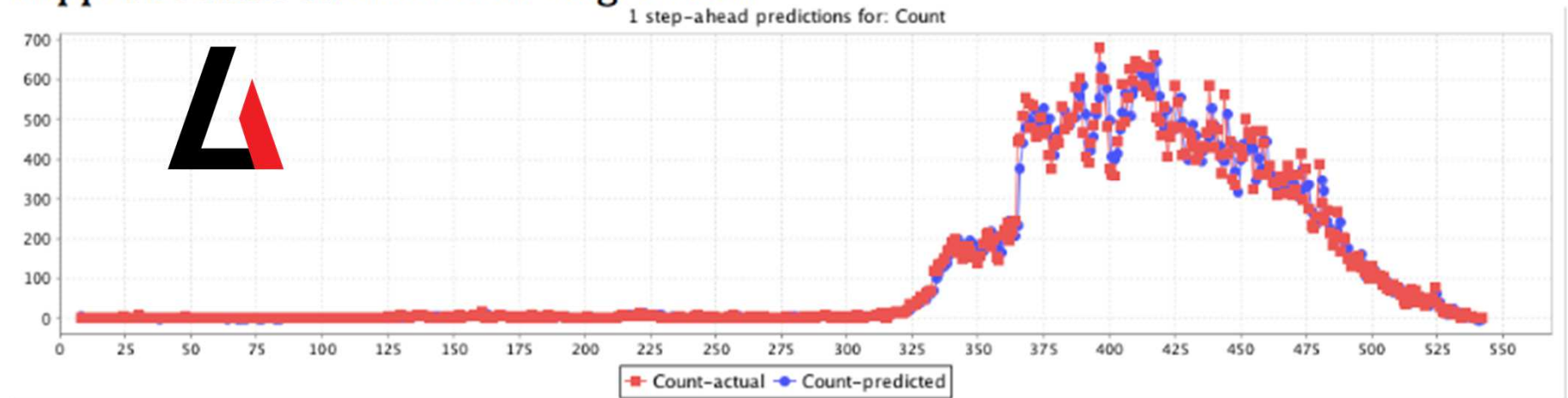






**LIVE, Dynamic & 100 Days Ahead (Ranges from hours to days)  
ACCURACY: 81.55%**

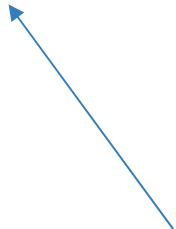
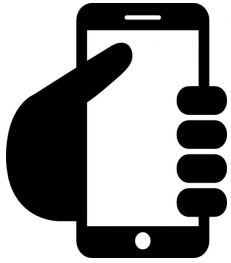
## Support Vector Machines for Regression



**Magnitude Dynamic Prediction up to 100 Days in Advance**



USERS OF THE COMMUNITY (VIA APP)



USED BY



BACKED BY

PUBLIC HEALTH OFFICERS (VIA ANALYTICS INTERFACE)



GOVERNMENTS & MULTILATERAL ORGANIZATIONS



WORLD BANK GROUP





# **AIME PREDICTION AND ANALYTICS FEATURES**



Email

admin@aime.life

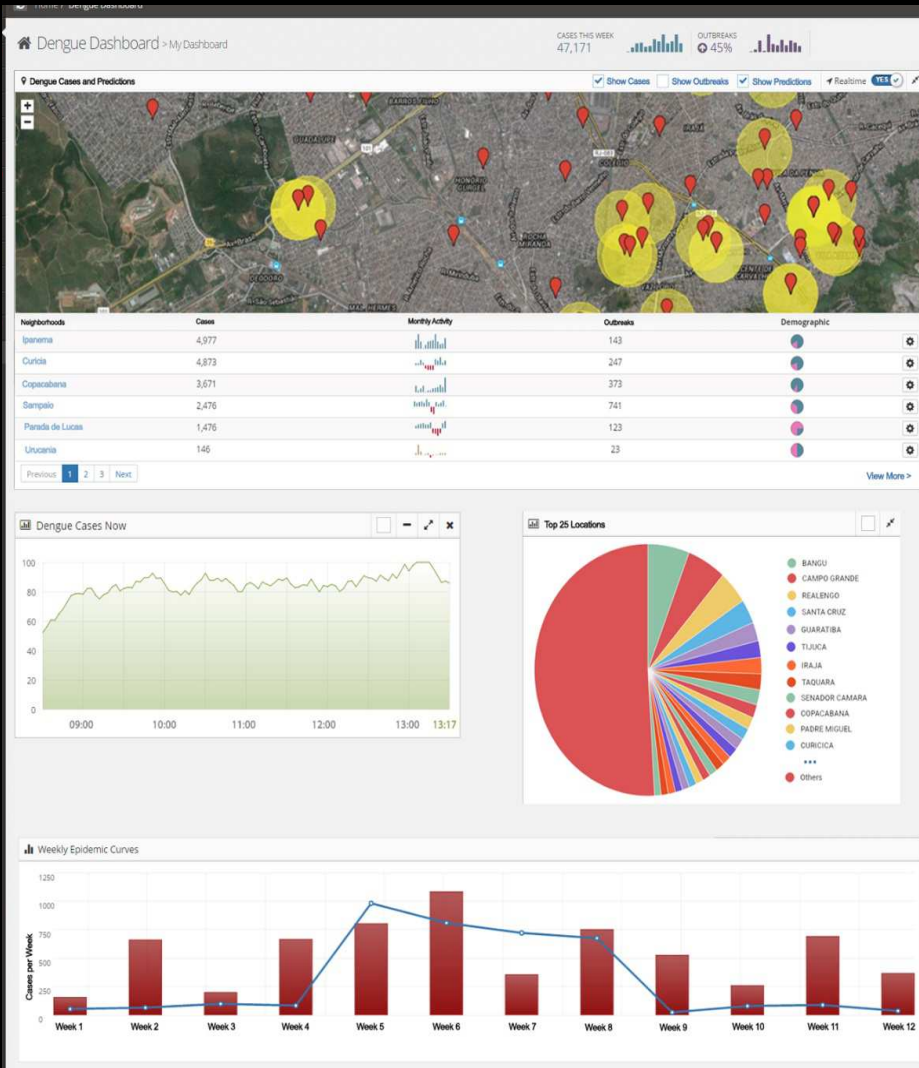
Password

\*\*\*\*\*

Remember me

Log In

[Forgot Password?](#)



**PREDICTION REAL TIME**



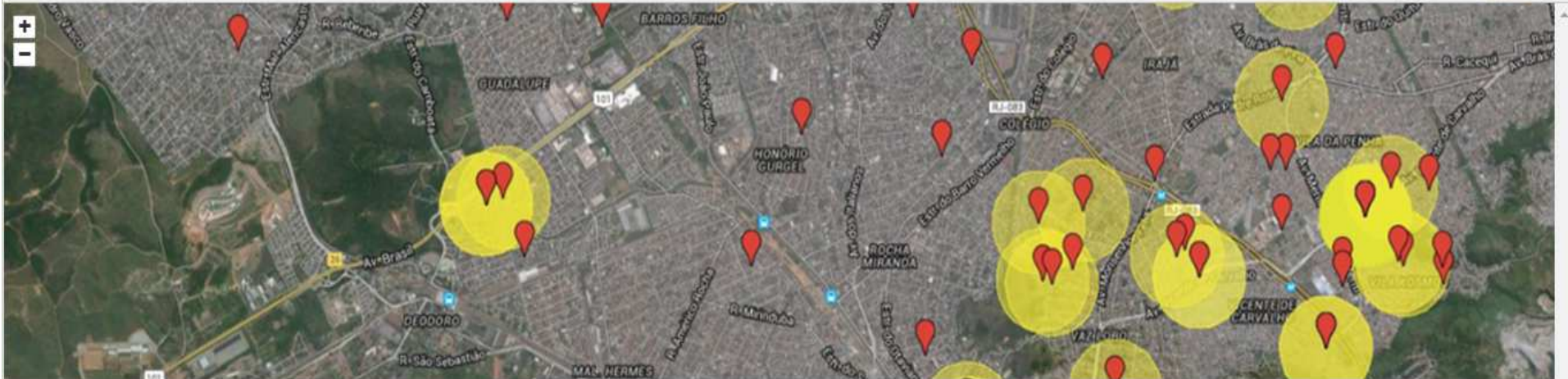
**LOCATION & MAGNITUDE ANALYTICS**



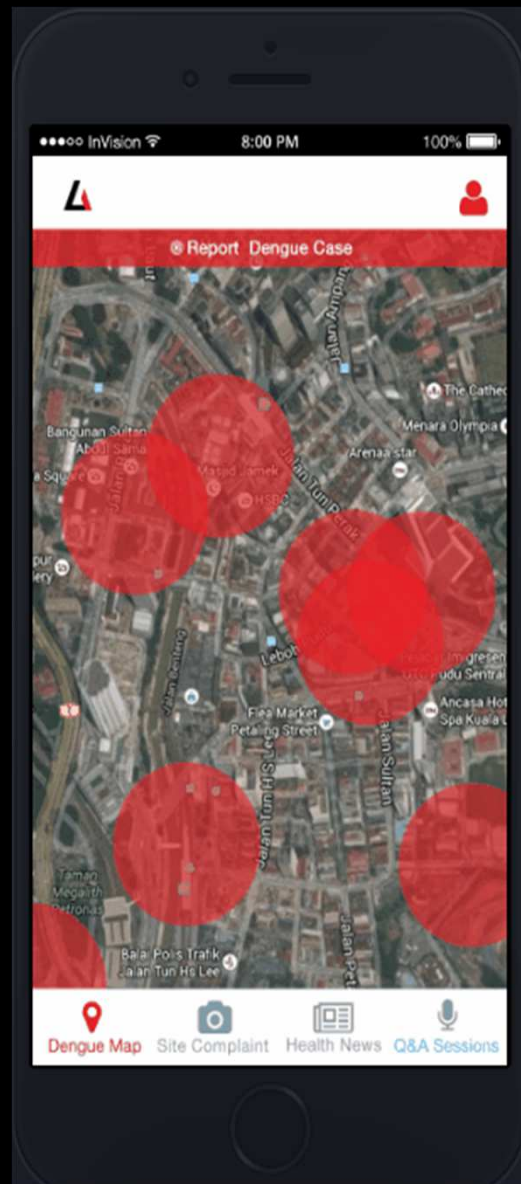
**EPID CURVE & REPORT**

📍 Dengue Cases and Predictions

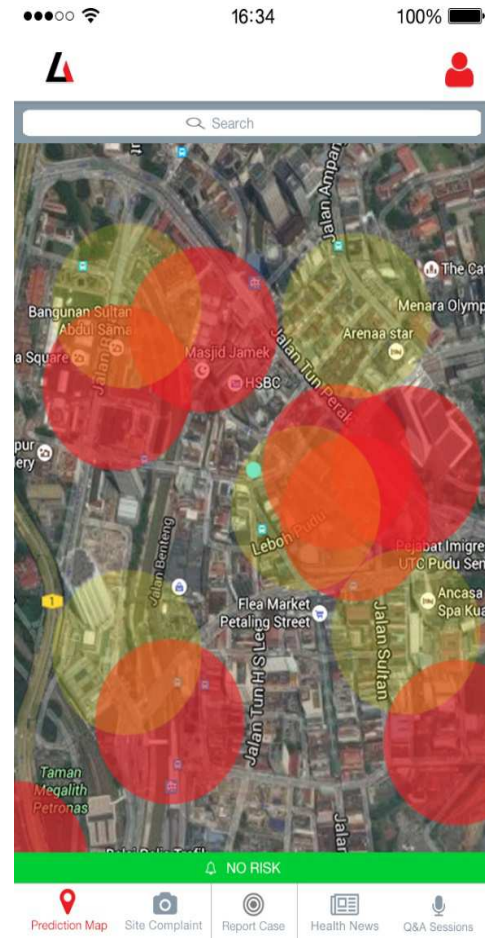
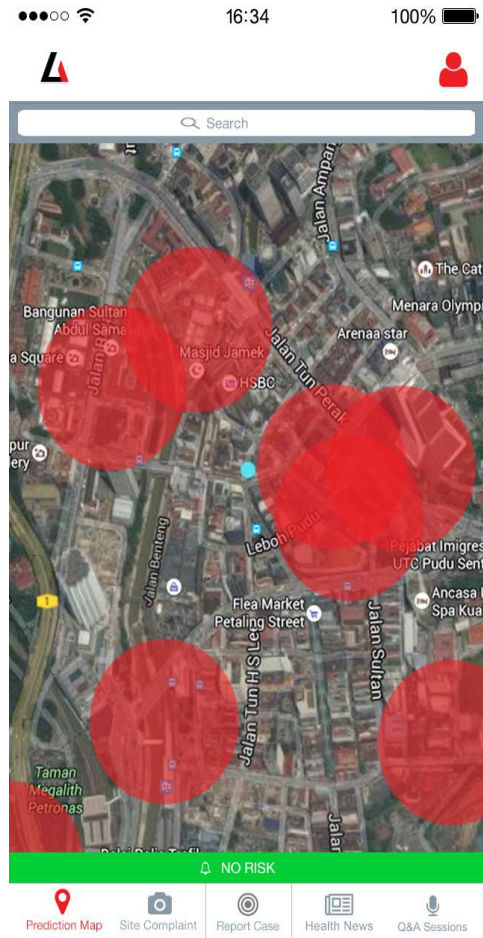
🔄 Realtime YES

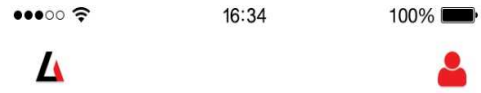


| Neighborhoods   | Cases | Monthly Activity | Outbreaks | Demographic |
|-----------------|-------|------------------|-----------|-------------|
| Ipanema         | 4,977 |                  | 143       |             |
| Curcica         | 4,873 |                  | 247       |             |
| Copacabana      | 3,671 |                  | 373       |             |
| Sampaio         | 2,476 |                  | 741       |             |
| Parada de Lucas | 1,476 |                  | 123       |             |
| Urucania        | 146   |                  | 23        |             |

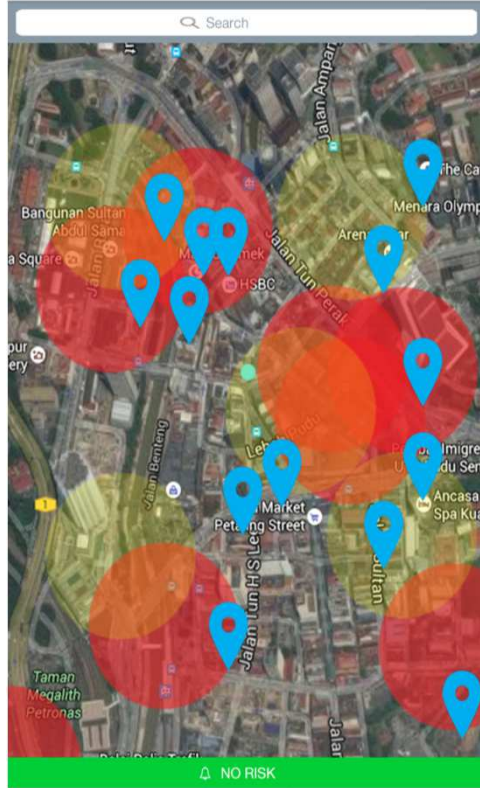








Say something about this picture....

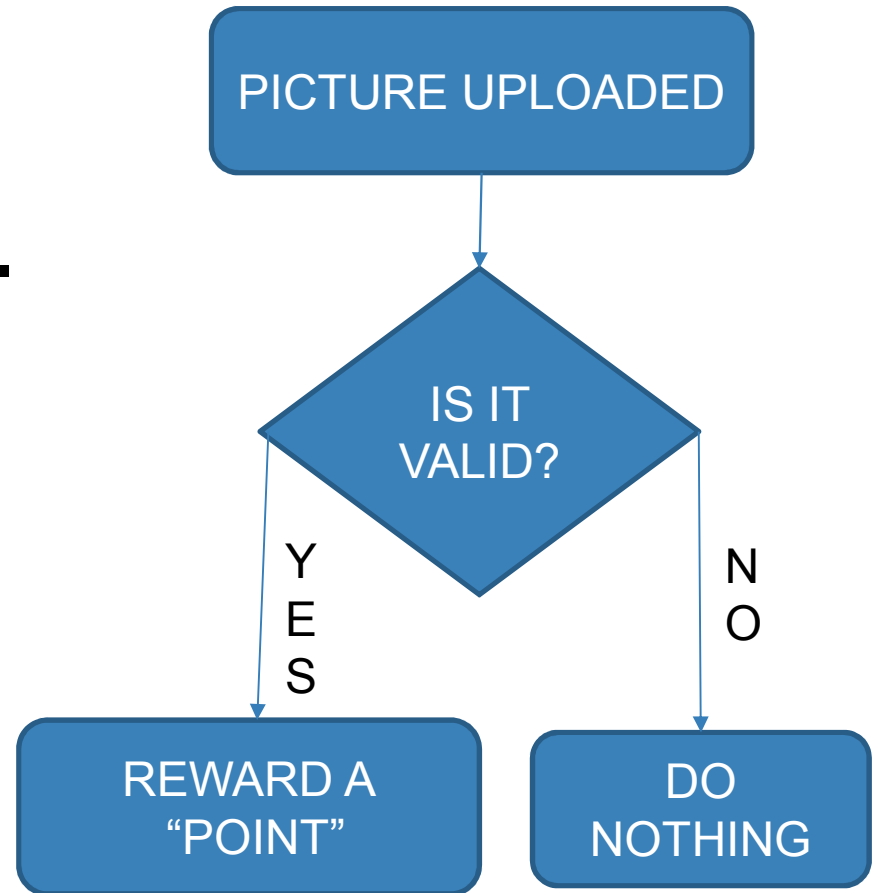




### 3. Addition of a Reward System.

For each validated and confirmed breeding site uploaded, users would be able to obtain “Webe Points”.

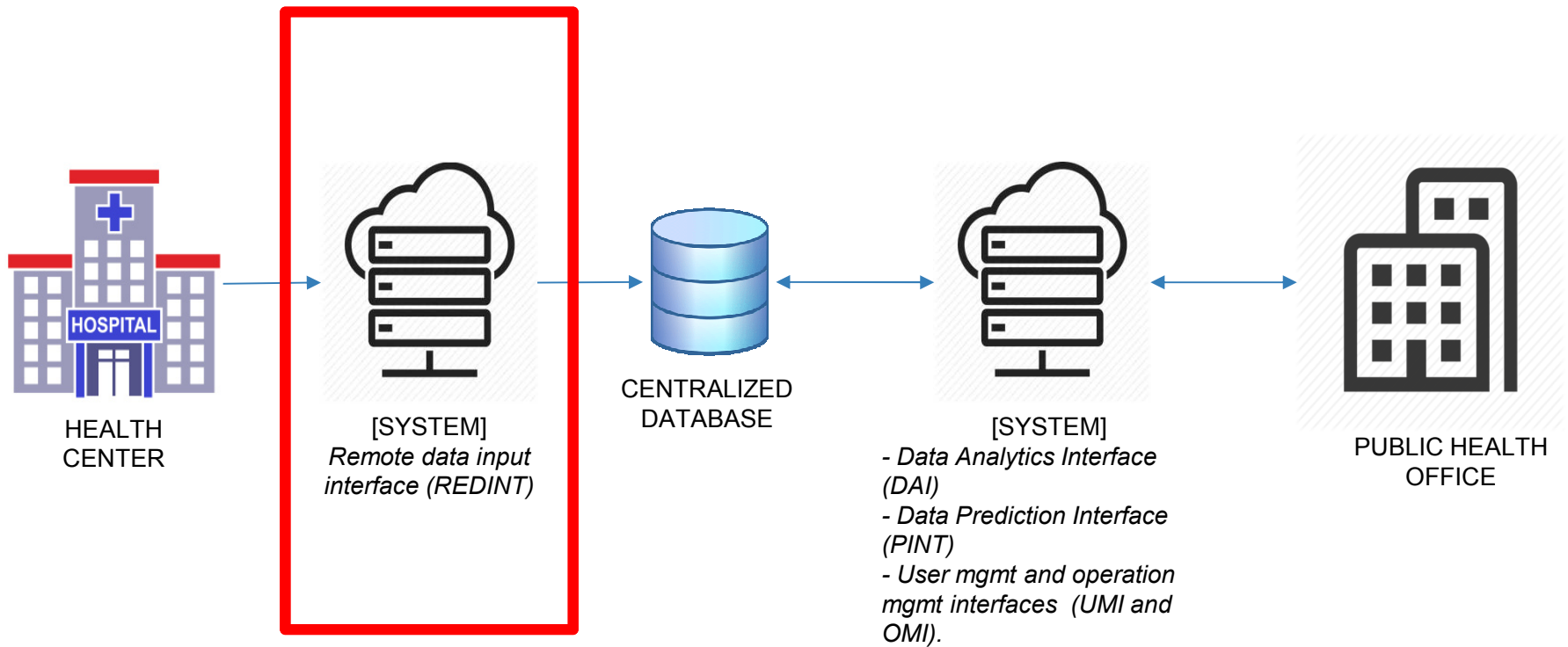
These points could then later be exchanged by rewards set by telco / local / state government to the Community.



#### ⚡ 4. Ability for Administrators to open “Health Campaigns”

With this, administrators of the app would **be able to mark an area in the map, and send notifications to the users** of the app (both once a user enters the marked area, and once the campaign starts).

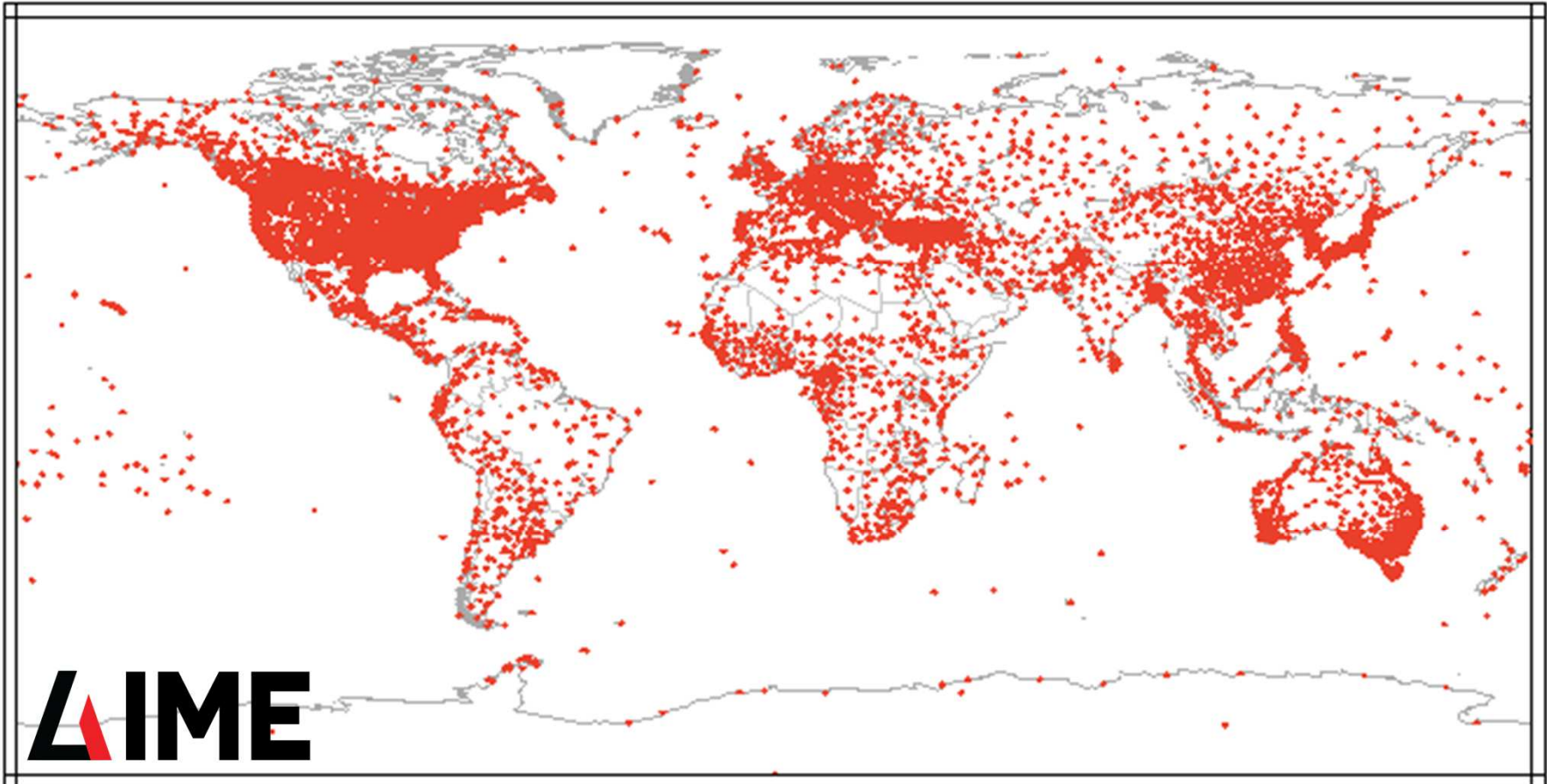
The **idea of the campaign is to clean and remove areas that show breeding sites that have been reported in the app**. Administrators will be able to give “Points/Credits/Movie Pass”



---

## AIME MAIN SYSTEM





**Within 23 Seconds We Tap 272 Variables For Prediction**



CENTRALIZED  
DATABASE



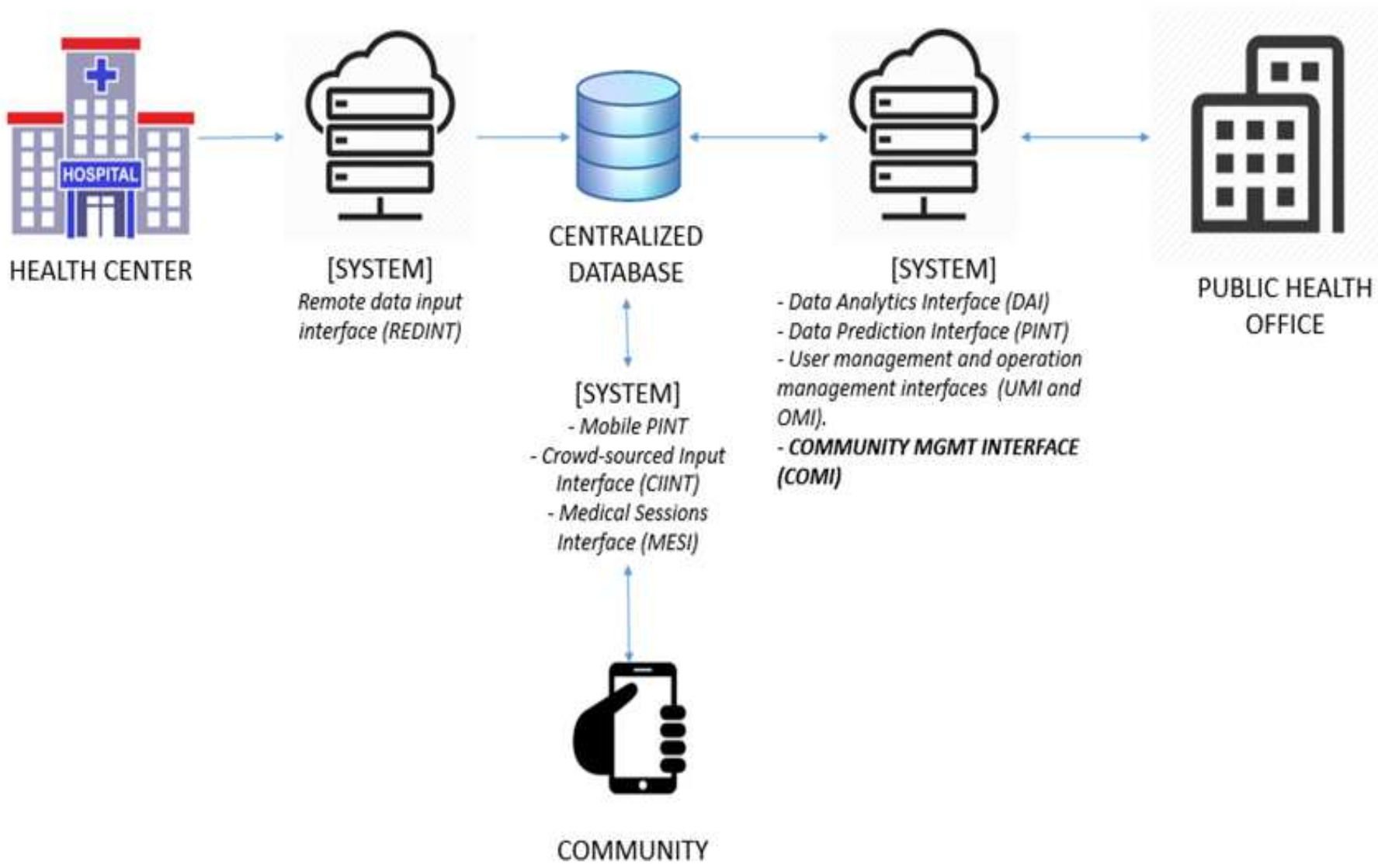
[SYSTEM]

- *Mobile PINT*
- *Crowd-sourced Input Interface (CIINT)*
- *Medical Sessions Interface (MESI)*

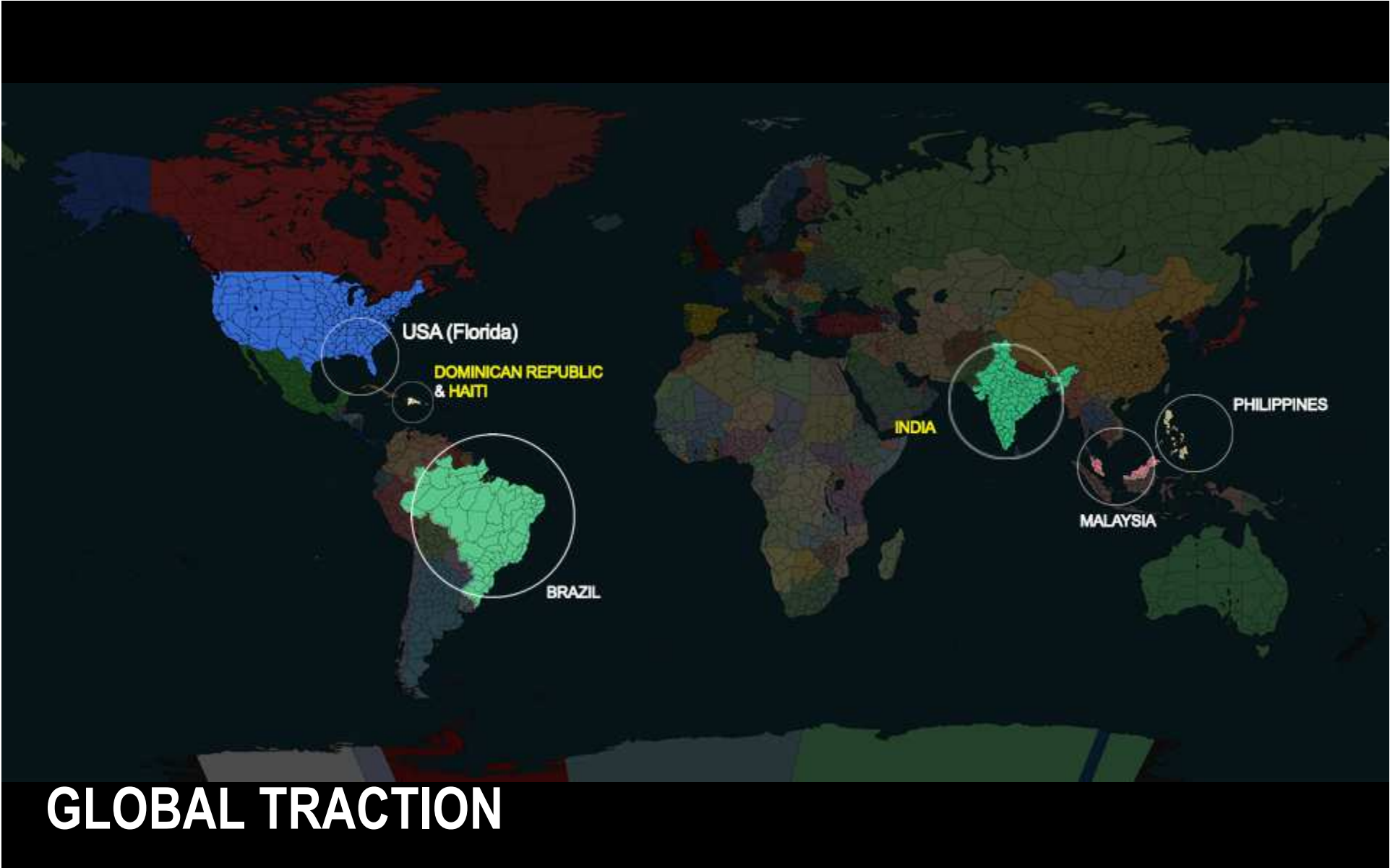


COMMUNITY

# AIME MOBILE SYSTEM

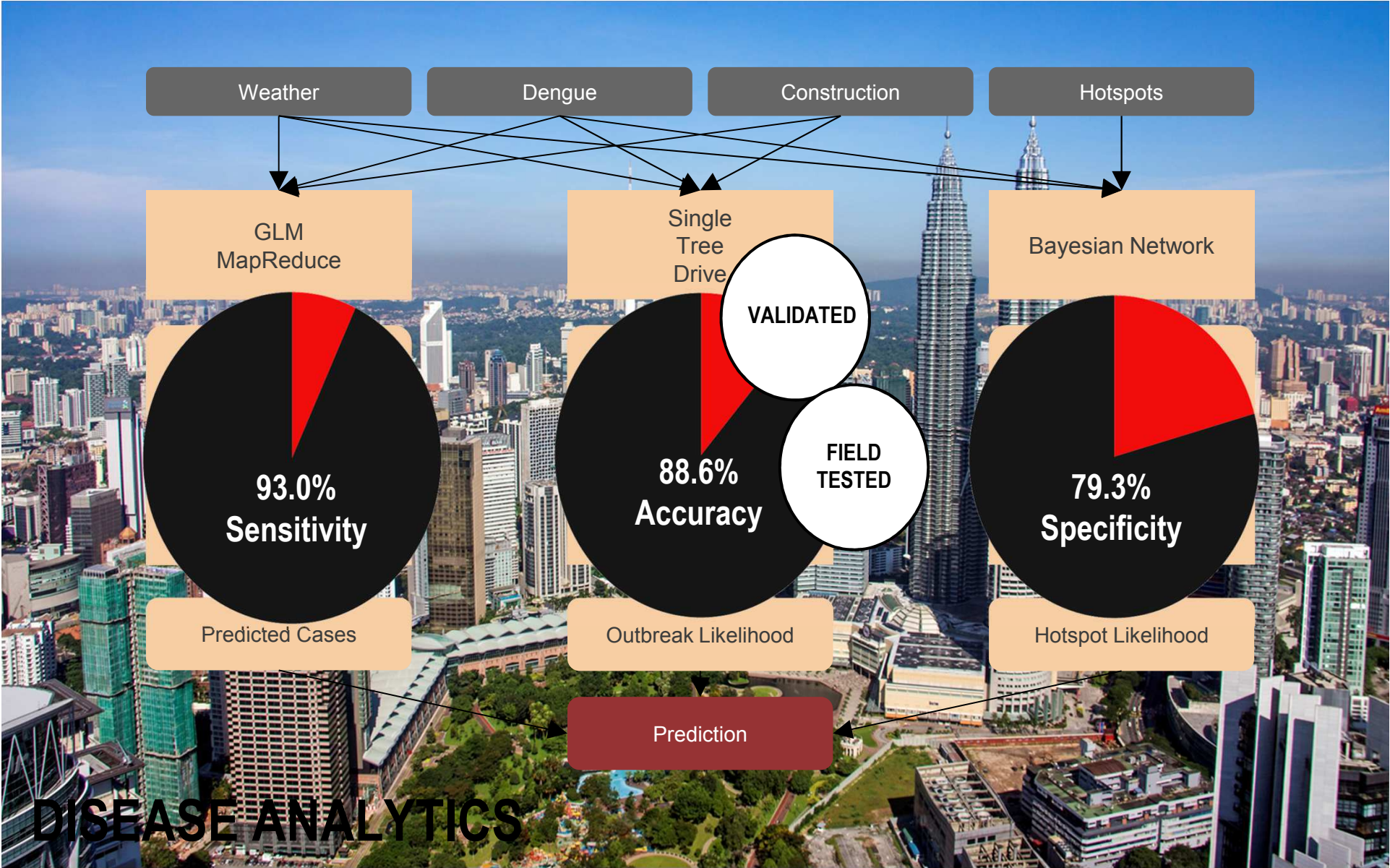


# **AIME'S ACHIEVEMENTS GLOBALLY**



# GLOBAL TRACTION







Accuracy of

# 84.11%

5 days of Data Analysis  
With Limited Resources



## DISEASE ANALYTICS





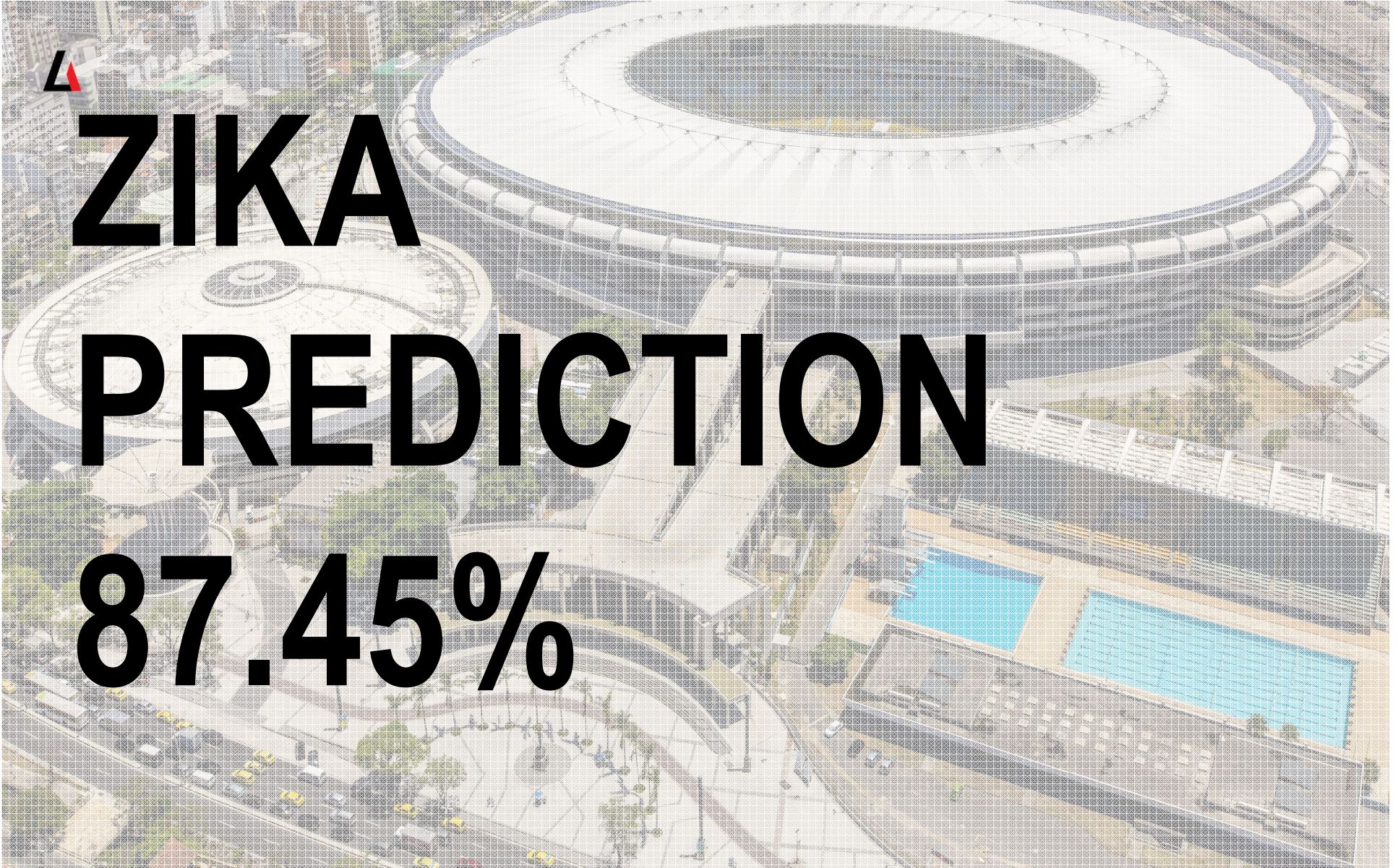
# MANILA, Philippines



**30 Days Prediction**  
**84.87%**







# ZIKA PREDICTION

87.45%





**AIME PILOT WITH RIO CITY HEALTH DEPARTMENT**



# AIME Inc WITH THE GOVERNMENT OF PHILIPPINES



MANILA, PHILIPPINES  
JULY, 2016



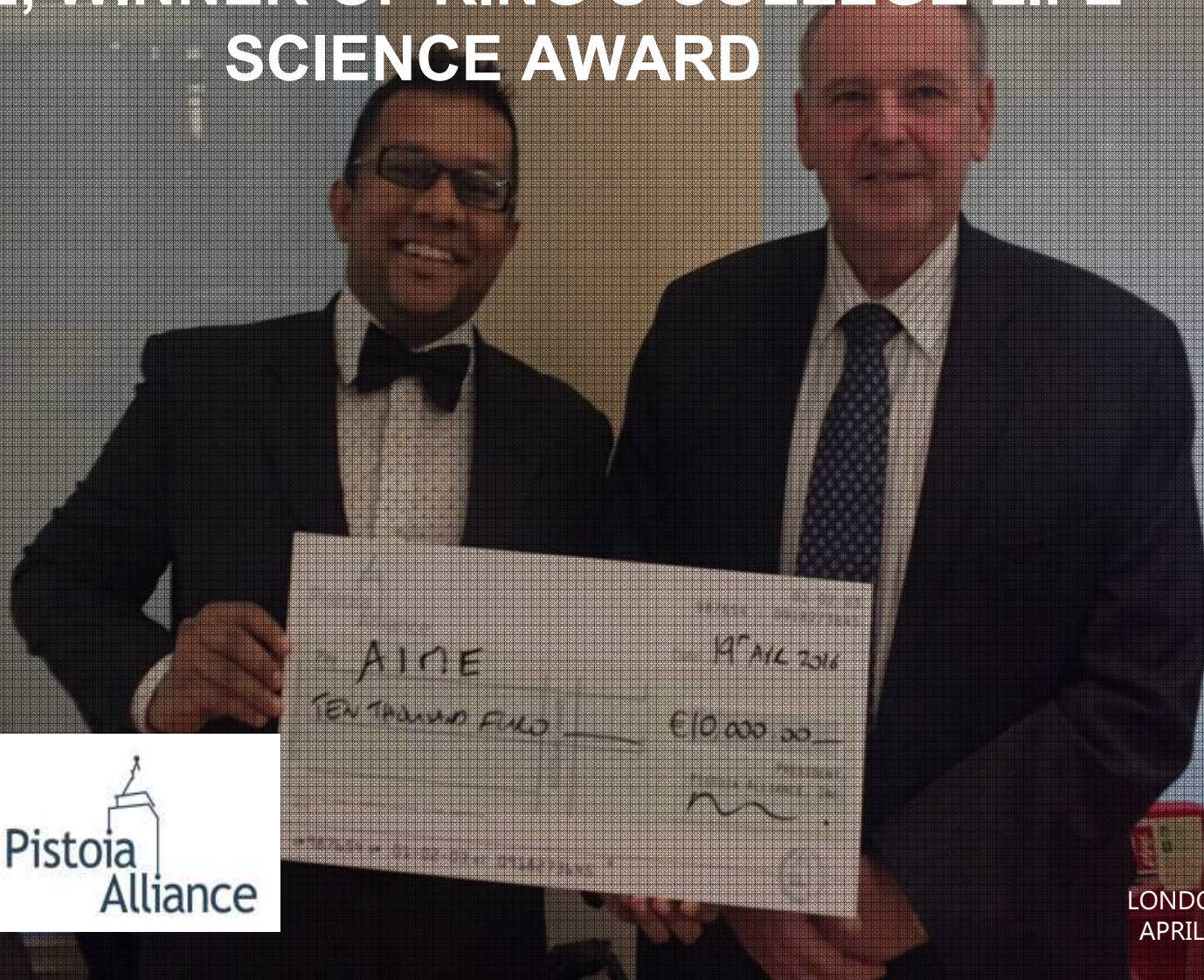
# AIME AWARDED FOR ITS EFFORT FROM THE CLINTON FOUNDATION



CALIFORNIA, USA  
MARCH 2016



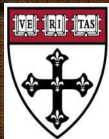
# AIME, WINNER OF KING'S COLLEGE LIFE SCIENCE AWARD



LONDON, UK  
APRIL 2016



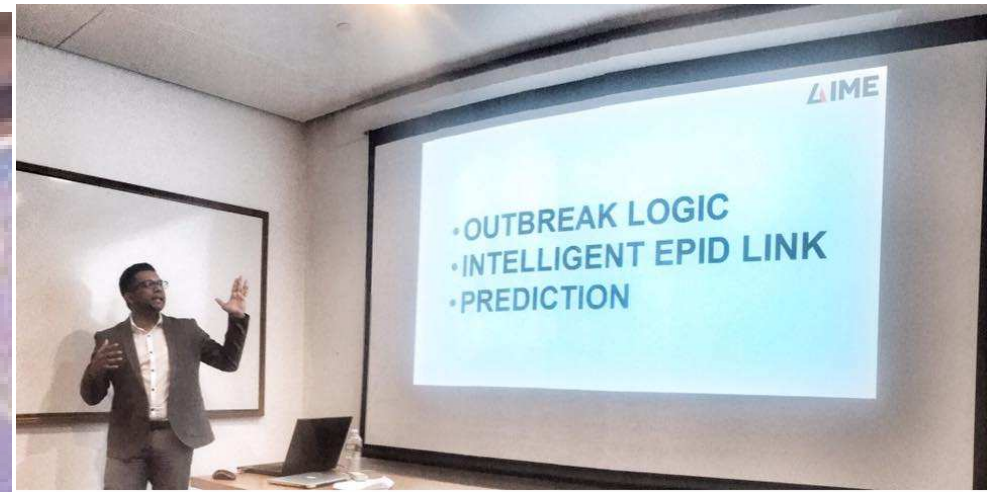
# AIME AS THE GLOBAL TOP 8 HEALTH INNOVATOR AWARD




**HARVARD**  
SCHOOL OF PUBLIC HEALTH

MASSACHUSETTS, USA  
JULY, 2016






**MASSACHUSETTS INSTITUTE OF TECHNOLOGY**  
 Building 32-D542  
 32 VASSAR STREET  
 CAMBRIDGE, MASSACHUSETTS 02139



August 19<sup>th</sup>, 2016

Co-Founder & Scientist  
 Artificial Intelligence in Medical Epidemiology (AIME) Inc  
 8339 NW 66th Street  
 Wicaga Miami, Florida 33166-2626, United States

Dear Dr. Dhesi Baha Raja,

On behalf of the MIT Universal Village Program, I am delighted to invite you to visit Massachusetts Institute of Technology and give keynote talk at MIT Universal Village Forum on September 20th.

Newly proposed by MIT, Universal Village exemplifies a desired future society that pursues human-nature harmony through the wise use of technologies. The concept calls for innovative new lifestyles which promise sustainable happiness for humanity's future. MIT Universal Village program expects to develop cutting-edge intelligent and automatic technologies that are making relevant components of future community more efficient and perfection. Those will include but not limit to intelligent healthcare, intelligent community, etc., and call for collective effort across multi-disciplinary fields beyond the traditional boundaries of research fields.

We believe that your innovative visions and great leadership in the areas of intelligent healthcare would bring in very interesting perspective on future UV development. We are looking forward to your involvement and support. Please feel free to contact me at [yifang@mit.edu](mailto:yifang@mit.edu) or 1-617-528-9868 for any further questions.



**Massachusetts  
 Institute of  
 Technology**

**Top 10 Exceptional Scientist & Innovations of the United Nations Solution Summit during the United Nations General Assembly 2016, New York**



**AIME Inc invited as EXPERTS  
to lead Vaccine Deployment site in United States of America & Latin America**





Forbes / Leadership The Little Black Book of Billionaire Secrets

OCT 12, 2015 @ 05:05 AM 8,887 VIEWS

## Infectious Disease: The Beginning Of The End

 You vomit. You sweat. You get a rash. Your body hurts all over. You may even die. Not fun.

Every year, 2.5 billion people are at risk of catching Dengue fever. And there is almost nothing you can do about it. I was told that there is no current vaccine for Dengue fever. I was surprised this was true, but according to a bunch of sites on the internet, it is true. Also not good. So if there is no current vaccine, what is the solution?

**Brian Rashid**  
CONTRIBUTOR

Prevention. But how?

AIME (Artificial Intelligence in Medical Epidemiology) is a company out of Singularity University that developed an algorithm capable of predicting outbreaks of Dengue. I have written about Singularity University before, but basically it assembles the best and brightest minds from around the world to solve problems that affect one billion people. In fact, Singularity only works with people that focus on solutions that will help at least a billion people. I love Singularity University. I go any chance I get. AIME is a perfect example of the genius that comes from the program.

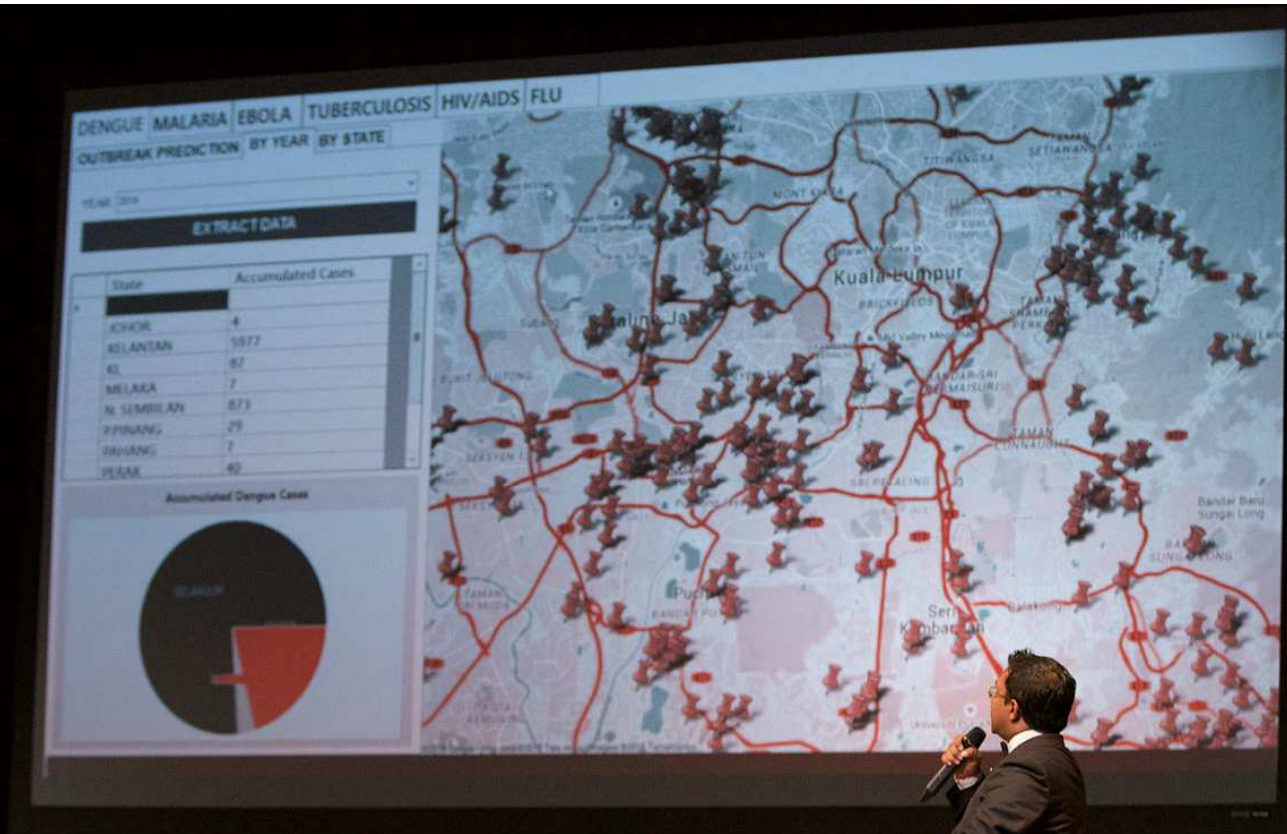
[FULL BIO >](#)

Opinions expressed by Forbes Contributors are their own.



# Forbes

**FORBES TOP 40 WORLD CHANGERS**



**TOP 5 PROJECT IN NASA AMES RESEARCH PARK,  
SILICON VALLEY, CALIFORNIA**

**@AIMEforLIFE**



**FOLLOW US**