

## UNECE Committee on Forests and Forest Industry    FAO European Forestry Commission

### UNECE Committee on Forests and the Forest Industry and FAO European Forestry Commission contribution to the UNFF Strategic Plan for the period 2017-2030 and the quadrennial programme of work for the period 2017-2020

18 January 2016

In reference to your request on submission of inputs related to the ECOSOC Resolution 2015/33, we would like to express support for this important initiative and thank you for the opportunity given to the UNECE Committee on Forests and Forest Industry (COFFI) and FAO European Forestry Commission (EFC) to contribute to this process.

We understand that the goals of the UNFF Strategic Plan and the quadrennial programmes of work that are designed to operationalise it will be aligned with the objectives of the International Arrangement on Forests (*art.1 of the International Arrangement on Forests beyond 2015*). We also understand that the latest forest-related policy developments (*art. 39 of the Arrangement*) will be taken into account in the Strategic Plan.

The UNECE Committee on Forests and the Forest Industry and FAO European Forestry Commission have already been implementing the relevant objectives of the International Arrangement on Forests (IAF) through the Integrated Programme of Work (IPoW). Should member States decide to do so, particular IPoW provisions could be included/referred to in the UNFF Strategic Plan and the quadrennial programmes of work, in particular as it pertains to the expected components of the Plan listed in the *art 39*:

- Roles of different actors;
- Framework for reviewing implementation; and
- Communication on the work of the IAF.

The Committee on Forests and the Forest Industry and the European Forestry Commission, have regularly discussed global forest related policy matters, including the UNFF process, in their joint sessions (the most recent was “Silva 2015”, which took place in Engelberg, Switzerland in November 2015)<sup>1</sup>. During Silva2015, the Committee and the Commission recognised the importance of the regional contribution by COFFI and EFC, including through the joint ECE/FAO Forestry and Timber Section, to the on-going UNFF work, as well as to the development of the UNFF Strategic Plan and its next programme of work. In line with this statement, we would like to hereby provide information about the Integrated Programme of Work.

The Integrated Programme of Work for the Committee on Forests and Forest Industry and the European Forestry Commission provides a substantial framework for UNECE and FAO joint activities related to sustainable forest management and the forest sector in the region. The current programme covers the period 2014-2017. The main components and governance of the program are explained in the Annex I. The overall goal of the Integrated Programme of Work 2014-17<sup>2</sup>, is to “Support member countries and relevant stakeholders in their efforts to sustainably manage and use

---

<sup>1</sup> <http://www.unece.org/forests/silva2015-engelberg.html>

<sup>2</sup> [http://www.unece.org/fileadmin/DAM/timber/Content/website/Integrated PoW 2014-2017 En.pdf](http://www.unece.org/fileadmin/DAM/timber/Content/website/Integrated_PoW_2014-2017_En.pdf)

ECE-region forests so that they provide products and ecosystem services to benefit society”. The Integrated Programme of Work aims to assist member countries to achieve this overall goal by: providing the best available information; facilitating policy dialogues and communication; and building capacity.

The current UNECE/FAO IPoW 2014-2017 and its activities are structured around four work areas (WA):

- WA1: Data, monitoring and assessment;
- WA2: Policy dialogue and advice;
- WA3: Communication and outreach;
- WA4: Capacity-building.

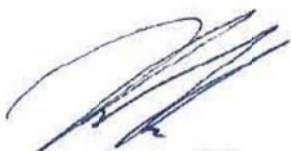
The implementation of IPoW is done through specific activities that are planned and carried out on yearly basis and includes activities that are relevant to the implementation of the IAF objectives, as well as direct contribution to UNFF. A recent example of this contribution is the regional study on trends and challenges in achieving the Global Objectives on Forests, which was prepared for the 11<sup>th</sup> session of the Forum<sup>3</sup>. The joint UNECE/FAO Forestry and Timber Section also actively contributed to the Country-Led Initiatives in support of UNFF, organised in Lviv, Ukraine (September 2012) and Interlaken, Switzerland (February 2015).

The Committee and the Commission supported the Sustainable Development Goals process. As a follow up to the Metsä2013 decisions, a workshop on “Forests and Sustainable Development Goals: a regional view”, organised in Geneva on 22-23 January 2014<sup>4</sup> and on 16 June 2014<sup>5</sup>, delivered concrete proposals to the SDGs process<sup>5</sup>.

We plan to prepare the next IPoW for the period 2018-2021. This will facilitate efforts of the member States in planning their future work related to IAF, UNECE and FAO in a coordinated manner.

We are ready to provide more information and share experiences from the region, and we are looking forward to collaboration on this important matter.

Best regards,



Kenan Kilic  
Chair  
FAO European Forestry Commission



Christoph Dürr  
Chair  
UNECE Committee on Forests and Forest Industry

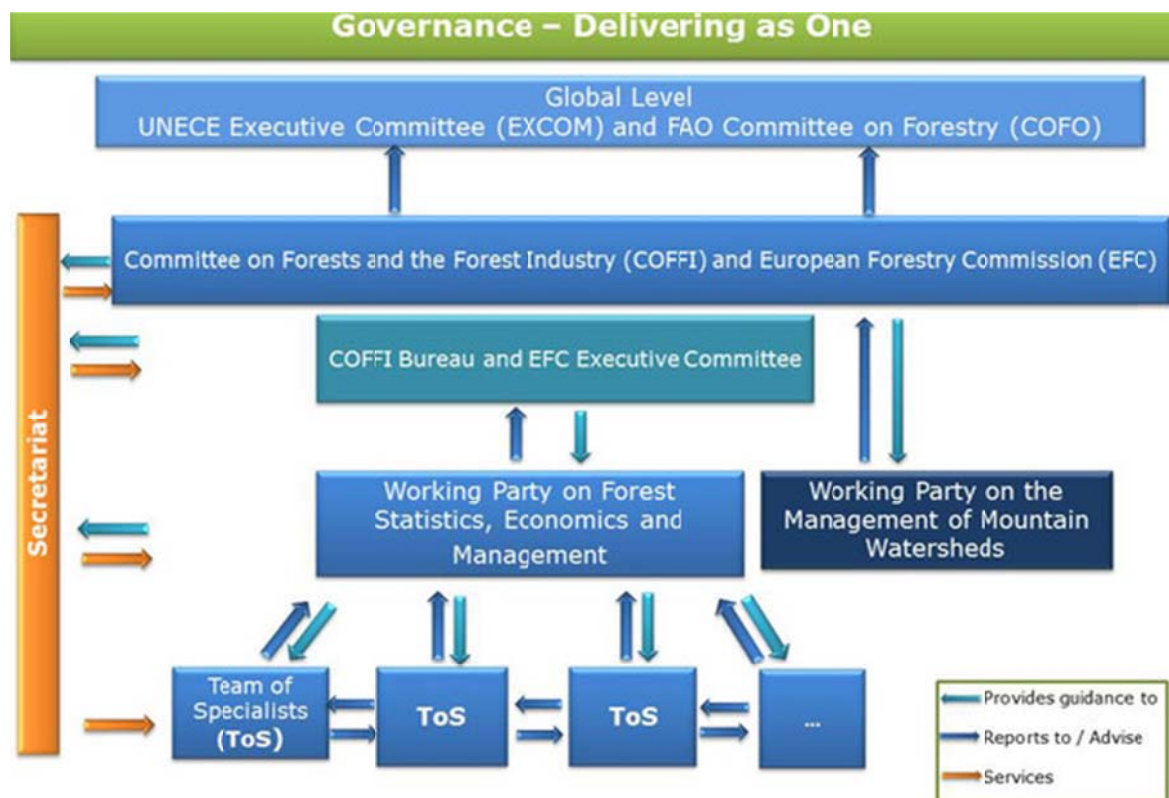
---

<sup>3</sup> <http://www.unece.org/forests/forests-in-the-ece-region-2015.html>

<sup>4</sup> <http://www.unece.org/index.php?id=34501#/>

<sup>5</sup> <http://www.unece.org/index.php?id=35313#/>

## Annex 1: Governance of the joint UNECE and FAO work on forests and forest sector



The UNECE **Committee on Forests and the Forest Industry (COFFI)** and the FAO **European Forestry Commission (EFC)** work together to strengthen the forest sector and its contribution to sustainable development in Europe, Central Asia and the Caucasus and North America through their integrated programme of work. UNECE and FAO jointly provide the **secretariat** team to support the implementation of the programme, through the UNECE/FAO Forestry and Timber Section, located in Geneva.

The **Joint UNECE/FAO Working Party on Forest Statistics, Economics and Management (JWPFSEM)** is a subsidiary body of COFFI and EFC and contributes to the implementation of the integrated programme of work of those two bodies. The JWPFSEM meets annually and provides guidance on the implementation of the Integrated Programme of Work and identifies priorities for action, It also supervises the work of the **Teams of Specialists**. To see the mandate of the WPFSEM, please click on the relevant language ([English/French/Russian](#)). To know more about the Teams of Specialists, please click [here](#).

The **joint bureaux** (Joint meeting of the bureau of COFFI and the Executive Committee of EFC) are supporting the implementation of the UNECE/FAO programme of work. They meet jointly once or twice annually to give strategic consideration and guidance to the Secretariat on particular issues of the work programme, often in conjunction with the sessions of COFFI and EFC. For a list of members and reports of the meetings, please click [here](#).