



**Enhanced cooperation,
coordination and engagement
on forest-related issues**

**Report of the Secretary-General
E/CN.18/2017/5**

 #UNForests | www.un.org/esa/forests | unff@un.org 

Collaborative Partnership on Forests (CPF)

- Strengthening CPF (per E/2015/33)
 - 2016 CPF Retreat: Future CPF priorities, focus and direction
 - New CPF Policy Document
 - Annex: CPF Work Plan (aligned with UNSPF & 4POW)
- Organization-Led Initiative on Global Forest Indicators
- Science-Policy Interface: Global Forest Expert Panel (IUFRO lead)

Expert Meeting on Enhancing Regional and Sub-Regional Involvement in the IAF

- Organized by UNFFS and ECO (September 2016, Tehran)
- 10 regional and sub-regional entities participated;
- Outcome: Set of proposals to enhance regional and sub-regional involvement in IAF (summary available on UNFF website)
- Proposals served as input to UNSPF discussions (AHEG2, UNFF Working Group)

Engagement of Major Groups and other relevant stakeholders in the IAF

- MGs contributed to the work of AHEG1 and AHEG2 and developed proposals on the UNSPF and 4POW.
- UNFFS and Canadian Forest Service organized an expert meeting on strengthening role of MGs and other stakeholders in IAF (October 2016, Ottawa)
 - Outcome: Strategies and options to strengthen engagement, including in Forum sessions (summary on UNFF website)
 - Input to AHEG2 and Forum Working Group
- UNFFS work with MGs in run up to UNFF12 to enhance technical inputs and exchanges

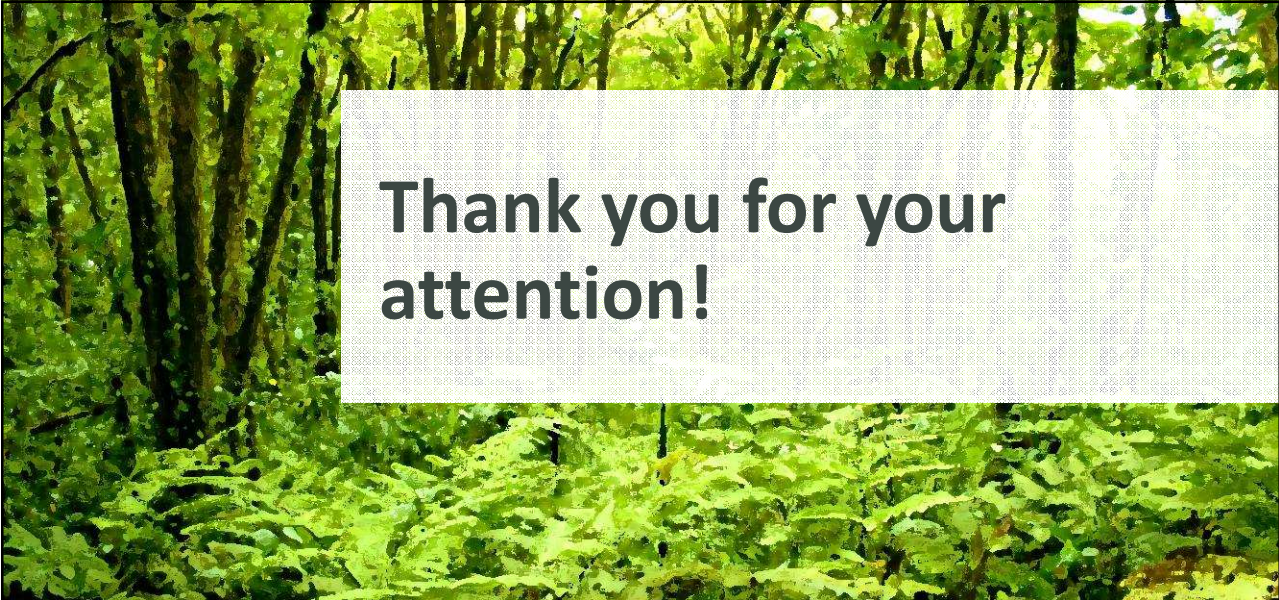
Communication and outreach activities



- Communication and outreach is essential part of UNSPF
- Plan calls for development of a communication & outreach strategy to raise awareness
- IDF is main platform for UNFFS outreach/communication
 - 2016 – “Forests & water.” 2017- “Forests & energy”
 - UNFFS organized special events at UNHQ
 - Social media campaigns with CPF members, UN DESA and UN Department of Public Information

Guidelines for country-led initiatives (CLIs) and similar initiatives

- ECOSOC Res. 2015/33, requests the Forum to update the guidelines for CLIs and similar initiatives (2009)
- The revised guidelines as contained in the SG report:
 - Includes reference to the UNSPF in the background section
 - Indicates that initiatives should directly relate to Forum priorities defined in 4POWs
 - Organizers should present outcome report to next UNFF session
 - Forum should consider outcome



**Thank you for your
attention!**



#UNForests | www.un.org/esa/forests | unff@un.org

