

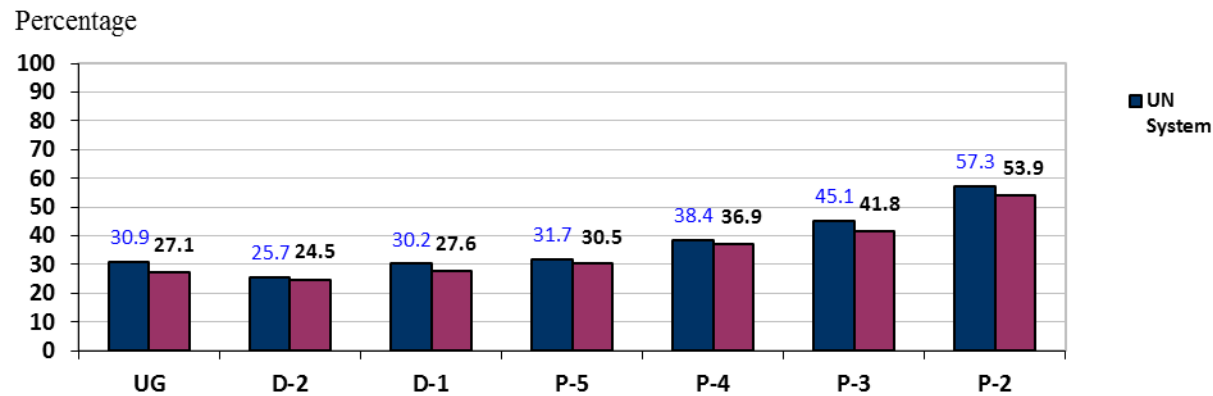
The Status of Women in the United Nations System and UN Secretariat  
(from 1 January 2001 to 31 December 2010)

THE UNITED NATIONS SYSTEM

UN SECRETARIAT

*Gender distribution of staff in the Professional and higher categories*

Percentage comparison of women in the professional and higher categories with appointments of one year or more in the United Nations system and UN Secretariat  
December 2010



\* Source: CEB Table 11 –31 December 2010

\*30 of 31 entities submitted data

\*\*UG stands for “Ungraded” and combines the ranks of Secretary-General, Under-Secretary-General, Assistant Secretary-General, Director-General, Deputy Director-General and Assistant Director-General

As of 31 December 2010, women **in the UN system** constituted:

- **40.3%** (12,005 out of 29,763) of all staff in the professional and higher categories with appointments of one year or more (UG-P2)
- **29.3%** (784 out of 2,674) of all staff at the **D-1 level and above**(UG-D1)
- **41.4%** (11,221 out of 27,089) of all staff at the **P level**(P5-P2)

**Gender balance** has only been achieved at the **P-2 level(57.3%)**.

\* Source: CEB Table 11 –31 December 2010

As of 31 December 2010, women **in UN Secretariat** constituted:

- **39.1%** (3918 out of 10,011) of all staff in the professional and higher categories with appointments of one year or more(UG-P2)
- **26.9%** (207 out of 769) of all staff at the **D-1 level and above**(UG-D1)
- **40.2%** (3711 out of 9242) of all staff at the **P level** (P5-P2)

**Gender balance** has only been achieved or exceeded at the **P-2 level(53.9%)**.

\* Source: CEB Table 11 –31 December 2010

**Trends in the representation of women in the Professional and higher categories – 2001 to 2010**

**Largest increase: UG (15.2 percentage points from 15.6% in Dec 2001 to 30.9% in Dec 2010)**  
**Smallest increase: P-2 (4.0 percentage points from 53.3% in Dec 2001 to 57.3% in Dec 2010)**

**Largest increase: UG (17.1 percentage points from 10.0% in Dec. 2001 to 27.1% in Dec. 2010)**  
**Smallest increase: D-1 (1.7 percentage points from 25.9% in Dec 2001 to 27.6% in Dec 2010)**

Level	% of women as of 31 Dec 2001	% of women as of 31 Dec 2010	Total change 2001-2010 (percentage points)	Average annual change 2001-2010 (percentage points)
UG	15.6	30.9	15.2	1.5
D-2	20.8	25.7	4.8	0.5
D-1	21.3	30.2	8.9	0.9
P-5	24.1	31.7	7.6	0.8
P-4	31.3	38.4	7.1	0.7
P-3	40.3	45.1	4.8	0.5
P-2	53.3	57.3	4.0	0.0
P-1	-	-	-	-

Level	% of women as of 31 Dec 2001	% of women as of 31 Dec 2010	Total change 2001-2010 (percentage points)	Average annual change 2001-2010 (percentage points)
UG	10.0	27.1	17.1	1.7
D-2	21.2	24.5	3.3	0.3
D-1	25.9	27.6	1.7	0.2
P-5	26.4	30.5	4.2	0.4
P-4	30.6	36.9	6.3	0.6
P-3	37.6	41.8	4.2	0.4
P-2	48.0	53.9	5.9	0.6
P-1	-	-	-	-

\* Source: CEB Table 11 – 31 December 2001 and 31 December 2010