

UN Women

The Status of Women in the United Nations System and UNAIDS

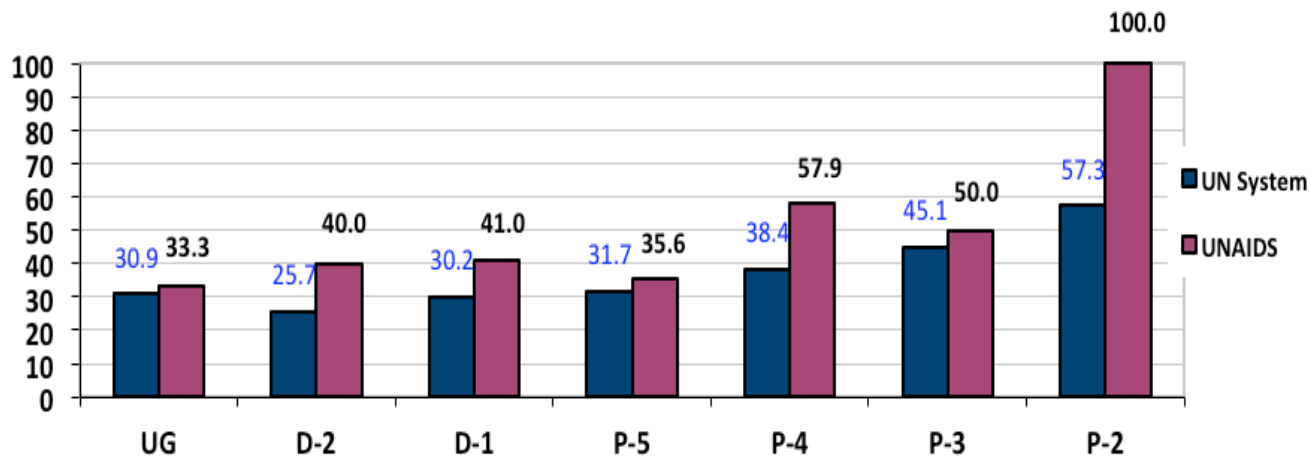
(from 1 January 2001 to 31 December 2010)

THE UNITED NATIONS SYSTEM

UNAIDS

Gender distribution of staff in the Professional and higher categories

Percentage comparison of women in the professional and higher categories with appointments of one year or more in the United Nations system and UNAIDS (Dec 2010)



*30 of 31 entities submitted data

**UG stands for "Ungraded" and combines the ranks of Secretary-General, Under-Secretary-General, Assistant Secretary-General, Director-General, Deputy Director-General and Assistant Director-General

As of 31 December 2010, women **in the UN system** constituted:

- **40.3%** (12,005 out of 29,763) of all staff in the professional and higher categories with appointments of one year or more.
- **22.7%** (784 out of 2,674) of all staff at the **D-1 level and above**.
- **29.3%** (11,221 out of 27,089) of all staff at the **P level**;

Gender balance has only been achieved at the **P-2 (57.3%) level**.

Largest increase: **UG (15.2%** from 15.6% in Dec 2001 to 30.9% in Dec 2010)

Smallest increase: **P-2 (4.0%** from 53.3% in Dec 2001 to 57.3% in Dec 2010)

As of 31 December 2010, women **in UNAIDS** constituted:

- **46.2%** (163 out of 353) of all staff in the professional and higher categories with appointments of one year or more.
- **40.4%** (21 out of 52) of all staff at the **D-1 level and above**.
- **47.2%** (142 out of 301) of all staff at the **P level**.

Gender balance has only been achieved or exceeded at **P4(57.9%)level,P3(50.0%)level, P2(100.0%)level**.

Largest increase: **UG(33.3%** from **0.0%** in Dec. 2001 to **33.3%** in Dec. 2010)

Largest decrease: **P3(-10.0%** from 60.0% in Dec 2001 to **50.0%** in Dec 2010)

Trends in the representation of women in the Professional and higher categories – 2001 to 2010

During the period **2001-2010 in the UN system**, the proportion of women appointed increased by **6.8 percentage points**, from **33.5%**(6,407 out of 19,098) in 2001 to **40.3%** (12,005 out of 29,763) in 2010.

During the period **2001- 2010 in UNAIDS** the proportion of women increased by **5.3 percentage points**, from **40.8%** (58 out of 142) in 2001 to **46.2%** (163 out of 353) in 2010.

Level	% of women as of 31 Dec 2001	% of women as of 31 Dec 2010	Total change 2001-2010 (percentage points)	Average annual change 2001-2010 (percentage points)
UG	15.6	30.9	15.2	1.5
D-2	20.8	25.7	4.8	0.5
D-1	21.3	30.2	8.9	0.9
P-5	24.1	31.7	7.6	0.8
P-4	31.3	38.4	7.1	0.7
P-3	40.3	45.1	4.8	0.5
P-2	53.3	57.3	4.0	0.0
P-1	-	-	-	-

Level	% of women as of 31 Dec 2001	% of women as of 31 Dec 2010	Total change 2001-2010 (percentage points)	Average annual change 2001-2010 (percentage points)
UG	0.0	33.3	33.3	3.3
D-2	33.3	40.0	6.7	0.7
D-1	33.3	41.0	7.7	0.8
P-5	31.2	35.6	4.4	0.4
P-4	34.6	57.9	23.2	2.3
P-3	60.0	50.0	-10.0	-0.1
P-2	84.2	100.0	15.8	1.6
P-1	-	-	-	-